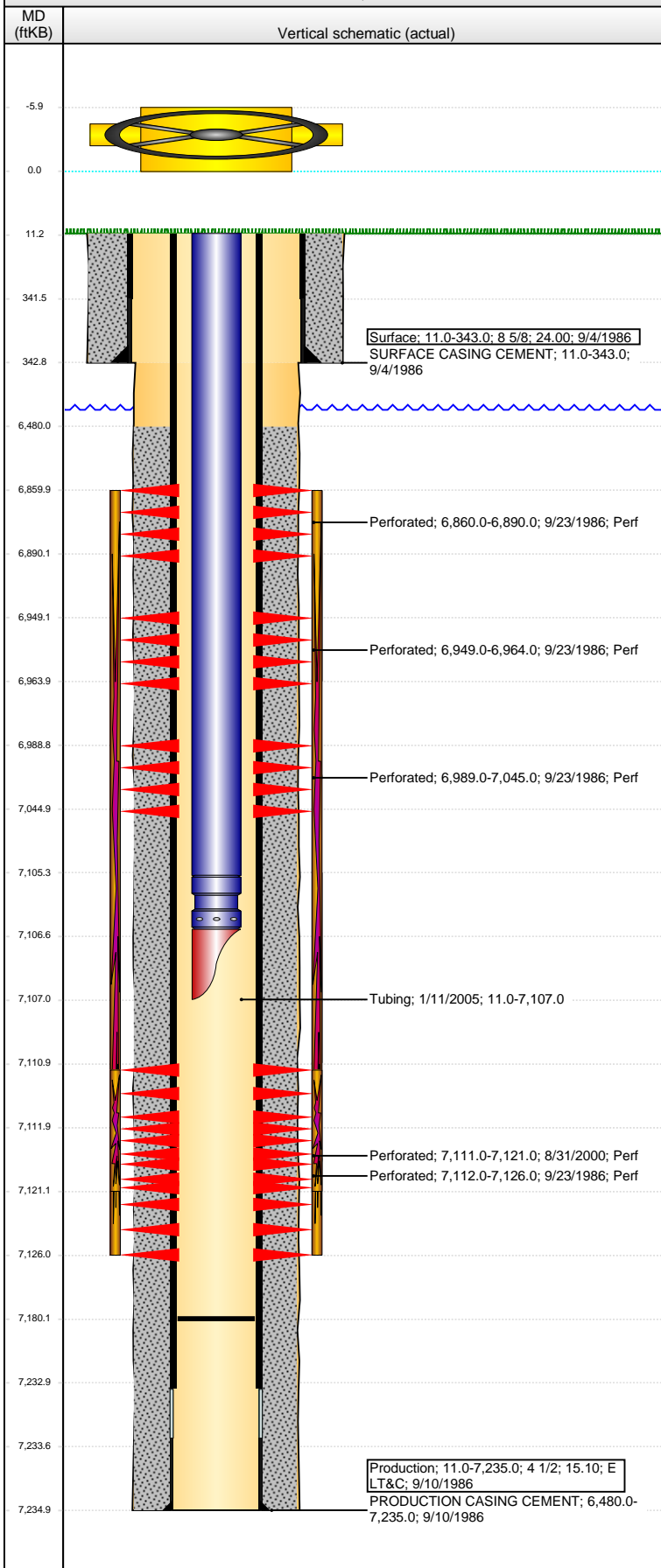


Well Name: DINNER 06-03

VERTICAL - ORIGINAL HOLE, 7/17/2014 4:07:42 PM



Well Header

API	05-123-13154	Business Unit	WATTENBERG	District	15	Well Config	VERTICAL
Original KB Elevation (ft)	4,867.00	KB - GL / MSL (ftKB)	11.00	Spud Date	9/4/1986	P & A Date	
Comment							
Directions To Well							

Congressional Location

Quarter 1	Quarter 2	Quarter 3	Quarter 4	Section	Township	Twnshp N...	Range	Rng E/W Dir
	SW	NW	SW	6	4	N	64	W

Bottom Hole Location

North-South Distance (ft)	From N or S Line	East-West Distance (ft)	From E or W Line

Plug Back Total Depths

Date	Depth (ftKB)	Method	Com
9/16/1986	7,130.0	CASED HOLE LOG	DEPTH LOGGER ON CBL
8/30/2000	7,205.0	TAG	CLEAN OUT TO LAND TUBING
1/11/2005	7,180.0	TAG	TAG TO LAND TUBING

Wellbore Sections

Section Des	Size (in)	Act Top, MD (ftKB)	Act Btm, MD (ftKB)
SURFACE	12 1/4	11.0	343.0
PRODUCTION	7 7/8	343.0	7,235.0

Zone Statuses

Zone Name	Status Date	Status	Job
CODELL	10/15/1986	PR	DRILLING/COMPLETION - ORIGINAL, 9/4/1986 00:00
CODELL	9/6/2000	PR	RE-FRAC, 8/29/2000 00:00
NIOBRARA	10/15/1986	PR	DRILLING/COMPLETION - ORIGINAL, 9/4/1986 00:00

Casing Strings

Surface, 343.0ftKB

Casing Description	Run Date	OD (in)	Wt/Len (l...)	Grade	Top, MD (ft...)	MD (ftKB)
Surface	9/4/1986	8 5/8	24.00		11.0	343.0

Production, 7,235.0ftKB

Casing Description	Run Date	OD (in)	Wt/Len (l...)	Grade	Top, MD (ft...)	MD (ftKB)
Production	9/10/1986	4 1/2	15.10	E LT&C	11.0	7,235.0

Cement

Description	Top Depth (ftKB)	Bottom Depth (ftKB)
SURFACE CASING CEMENT	11.0	343.0
Description	Top Depth (ftKB)	Bottom Depth (ftKB)
PRODUCTION CASING CEMENT	6,480.0	7,235.0

Tubing Components

Item Des	OD (in)	Wt (lb/ft)	Grade	Jts	Len (ft)	Btm (ftKB)	Btm (TVD) (ftKB)
EUE 8rd Tubing	2 3/8			227	7,094.40	7,105.4	
Seal Nipple	2 3/8			1	1.10	7,106.5	
Mule Shoe	2 3/8			1	0.50	7,107.0	

Perforation Data

Zone	Bnch/St g	Entered Shot Total	Top (ftKB)	Btm (ftKB)	Date
NIOBRARA, ORIGINAL HOLE		4	6,860.00	6,890.00	9/23/1986
NIOBRARA, ORIGINAL HOLE		4	6,949.00	6,964.00	9/23/1986
NIOBRARA, ORIGINAL HOLE		4	6,989.00	7,045.00	9/23/1986
CODELL, ORIGINAL HOLE			7,111.00	7,121.00	8/31/2000
CODELL, ORIGINAL HOLE		7	7,112.00	7,126.00	9/23/1986

Stimulations & Treatments

Date	Zone	Primary Job Type
9/23/1986	NIOBRARA-CODELL, ORIGINAL HOLE	DRILLING/COMPLETION - ORIGINAL
Technical Result		Tech Result Details
		Tech Result Note

Comment

Date	Zone	Primary Job Type
9/24/1986	NIOBRARA-CODELL, ORIGINAL HOLE	DRILLING/COMPLETION - ORIGINAL
Technical Result		Tech Result Details
		Tech Result Note

Comment

LIMITED ENTRY FRAC

Well Name: DINNER 06-03

VERTICAL - ORIGINAL HOLE, 7/17/2014 4:07:43 PM

Stimulations & Treatments

Date 9/1/2000	Zone CODELL, ORIGINAL HOLE	Primary Job Type RE-FRAC
Technical Result Failure	Tech Result Details Screen-Out	Tech Result Note
Comment PSI SPIKED TWICE AND BROKE BACK, THEN SCREENED OUT TO 8600 PSI		

Other In Hole

Run Date	Des	OD (in)	Top (ftKB)	Btm (ftKB)

Logs

Date	Type	Top, MD (ftKB)	Btm, MD (ftKB)
9/10/1986	COMPENSATED DENSITY	4,384.0	7,231.0
9/10/1986	INDUCTION	340.0	7,234.0
9/16/1986	CEMENT BOND	6,276.0	7,123.0
8/24/2011	GYRO	11.0	7,000.0

