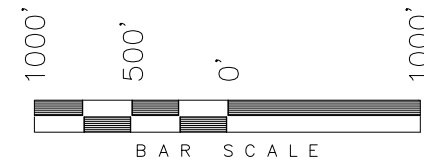


**T1S, R100W, 6th P.M.**

**ENCANA OIL & GAS (USA) INC**

WELL LOCATION, CBU DV16C-15 015 1100, LOCATED AS SHOWN IN THE SE 1/4 SE 1/4 OF SECTION 15, T1S, R100W, 6th P.M. RIO BLANCO COUNTY, COLORADO.

TARGET BOTTOM HOLE, CBU DV16C-15 015 1100, LOCATED AS SHOWN IN THE SE 1/4 SE 1/4 OF SECTION 15, T1S, R100W, 6th P.M. RIO BLANCO COUNTY, COLORADO.



**IMPROVEMENT NOTE:**

See addendum to legal plat (sheet 2) for visible improvements within 500' of the proposed well head.

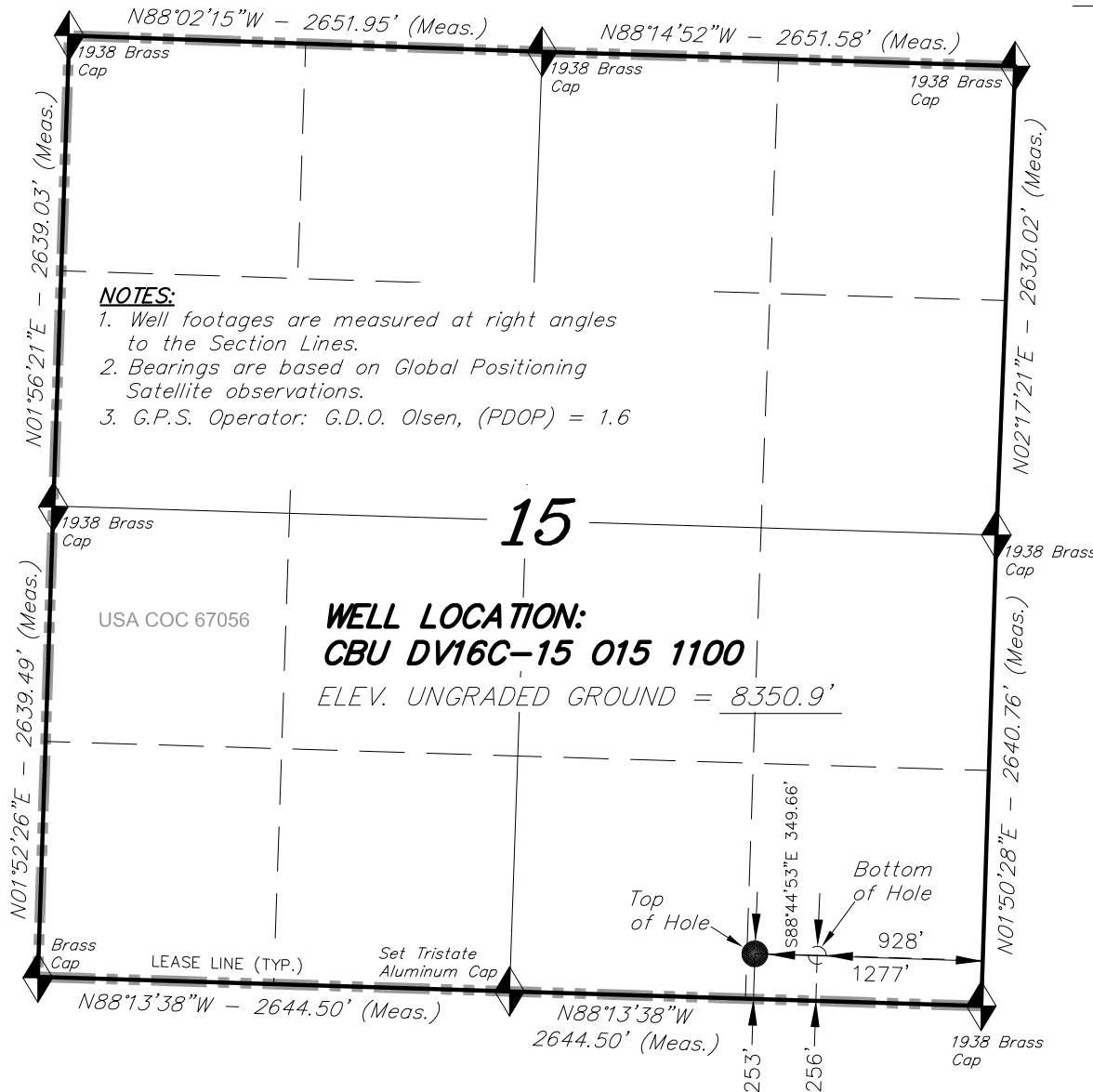
THIS IS TO CERTIFY THAT THE ABOVE PLAT WAS PREPARED FROM FIELD NOTES OF REAL SURVEYS MADE BY ME OR UNDER MY SUPERVISION. THE LOCATION HAS BEEN STAKED ON THE GROUND AS SHOWN ON THE PLAT, AND THAT THE SAME ARE TRUE AND CORRECT TO THE BEST OF MY KNOWLEDGE AND BELIEF.

*[Signature]*  
# 30125  
REGISTERED LAND SURVEYOR  
REGISTRATION # 30125  
STATE OF COLORADO

**TRI STATE LAND SURVEYING & CONSULTING**

180 NORTH VERNAL AVE. - VERNAL, UTAH 84078  
(435) 781-2501

DATE SURVEYED: 04-18-14	SURVEYED BY: G.D.O.	SHEET  1a
DATE DRAWN: 06-27-14	DRAWN BY: L.C.S.	
REVISED:	SCALE: 1" = 1000'	



= SECTION CORNERS LOCATED

Elevations are based on an N.G.S. OPUS Correction.  
LOCATION: LAT. 39°47'48.18" LONG. 108°28'45.07"  
(Tristate Aluminum Cap) NAVD88  
Elev. 7583.56'

NAD 83 (SURFACE LOCATION)			
LATITUDE	=	39°57'25.72"	(39.957144°)
LONGITUDE	=	108°35'54.64"	(108.598512°)
NAD 83 (BOTTOM HOLE LOCATION)			
LATITUDE	=	39°57'25.76"	(39.957156°)
LONGITUDE	=	108°35'50.15"	(108.597265°)