

# ENCANA OIL & GAS (USA) INC

## LOCATION DRAWING

### ADDENDUM TO LEGAL PLAT

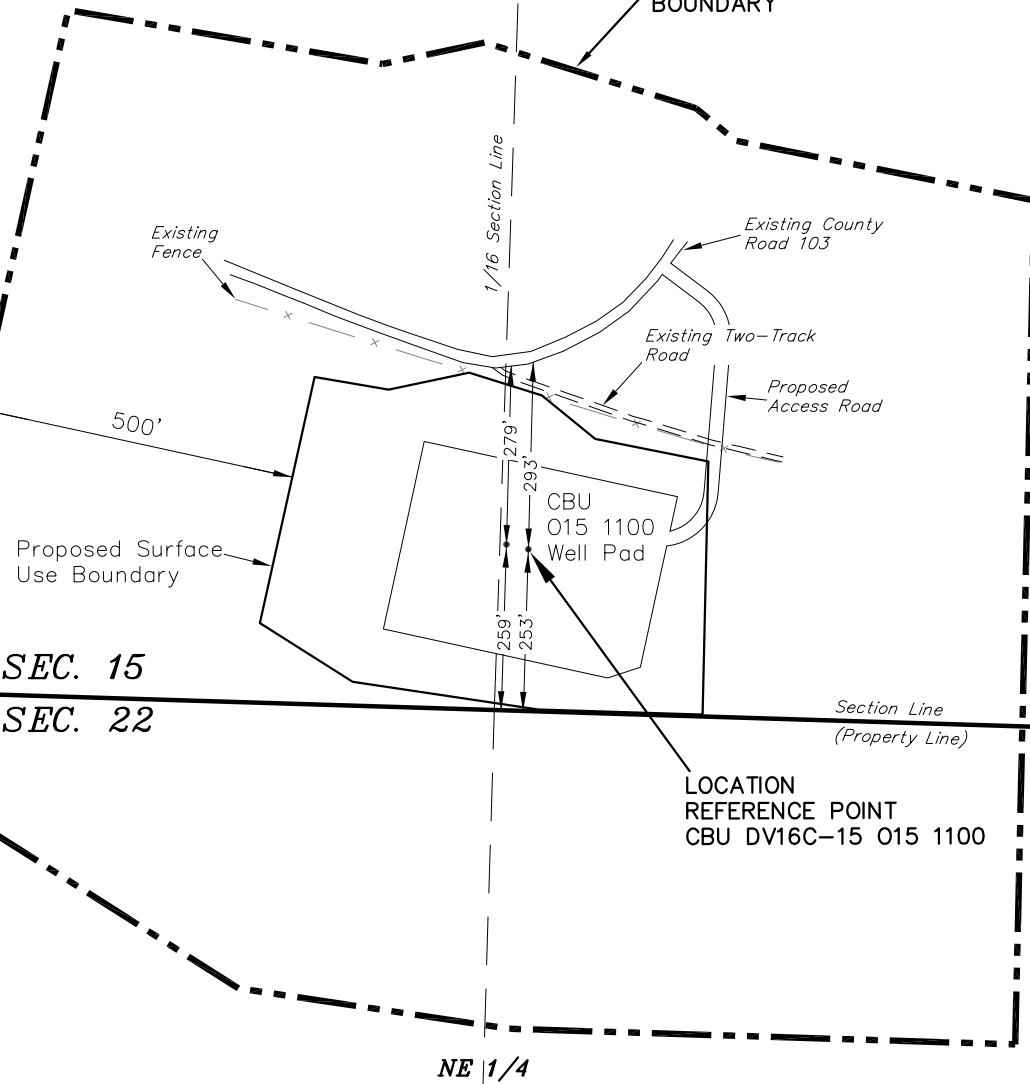
#### WELL PAD CBU 015 1100 (PHASE I)

Section 15, T1S, R100W, 6th P.M.

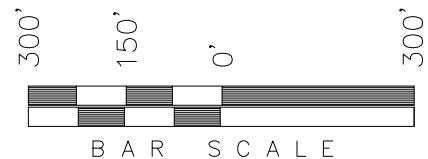
SE 1/4



500' OFFSET  
FROM SURFACE USE  
BOUNDARY



Feature	Reference point: Distance from Location Reference Point
Building (Meter Shed)	>5,280'
Building Unit (House)	>5,280'
High Occupancy Building Unit	>5,280'
Designated Outside Activity Area	>5,280'
Public Road	±293'
Above Ground Utility	>5,280'
Railroad	>5,280'
Property Line	±253'



SURVEYED BY: G.D.O. DATE SURVEYED: 04-18-14  
 DRAWN BY: L.C.S. DATE DRAWN: 06-27-14  
 SCALE: 1" = 300' REVISED:

**Tri State**  
 Land Surveying, Inc.  
 180 NORTH VERNAL AVE. VERNAL, UTAH 84078  
 (435) 781-2501

SHEET  
 2