

# **BILL BARRETT CORP**

**WELD COUNTY, COLORADO**

**Will 6-62-15\_22 NENW Pad**

**Will 6-62-15-0362CH2**

**Wellbore #1**

**Plan: Design #1**

## **Standard Planning Report**

**15 July, 2014**



Bill Barrett Corporation

## COMPANY DETAILS: BILL BARRETT CORP

Calculation Method: Minimum Curvature  
Error System: ISCWSA  
Scan Method: Closest Approach 3D  
Error Surface: Elliptical Conic  
Warning Method: Error Ratio

## REFERENCE INFORMATION

Co-ordinate (N/E) Reference: Well Will 6-62-15-0362CH2, True North  
Vertical (TVD) Reference: kb @ 4772.0ft (Original Well Elev)  
Section (VS) Reference: Slot - (0.0N, 0.0E)  
Measured Depth Reference: kb @ 4772.0ft (Original Well Elev)  
Calculation Method: Minimum Curvature

## WELL DETAILS: Will 6-62-15-0362CH2

+N/-S	+E/-W	Northing	Easting	Latitude	Longitude
0.0	0.0	1424895.52	3330999.60	40° 29' 37.111 N	104° 18' 35.482 W

## SECTION DETAILS

Sec	MD	Inc	Azi	TVD	+N/-S	+E/-W	DLeg	TFace	VSec	Target
1	0.0	0.00	0.00	0.0	0.0	0.0	0.00	0.00	0.0	
2	201.4	4.03	314.67	201.2	5.0	-5.0	2.00	314.67	-4.8	
3	5642.9	4.03	314.67	5629.3	273.7	-276.8	0.00	0.00	-264.6	
4	5844.3	0.00	180.18	5830.5	278.7	-281.9	2.00	180.00	-269.4	
5	6094.3	0.00	180.18	6080.5	278.7	-281.9	0.00	180.18	-269.4	
6	6847.0	90.32	180.18	6558.0	-201.5	-283.4	12.00	180.18	210.5	W 15-0362CH2 LP
7	16367.5	90.32	180.18	6505.0	-9721.8	-313.5	0.00	0.00	9726.9	W 15-0362CH2 PBHL

## PROJECT DETAILS: WELD COUNTY, COLORADO

Geodetic System: US State Plane 1983  
Datum: North American Datum 1983  
Ellipsoid: GRS 1980  
Zone: Colorado Northern Zone

## FORMATION TOP DETAILS

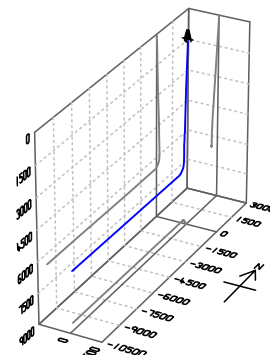
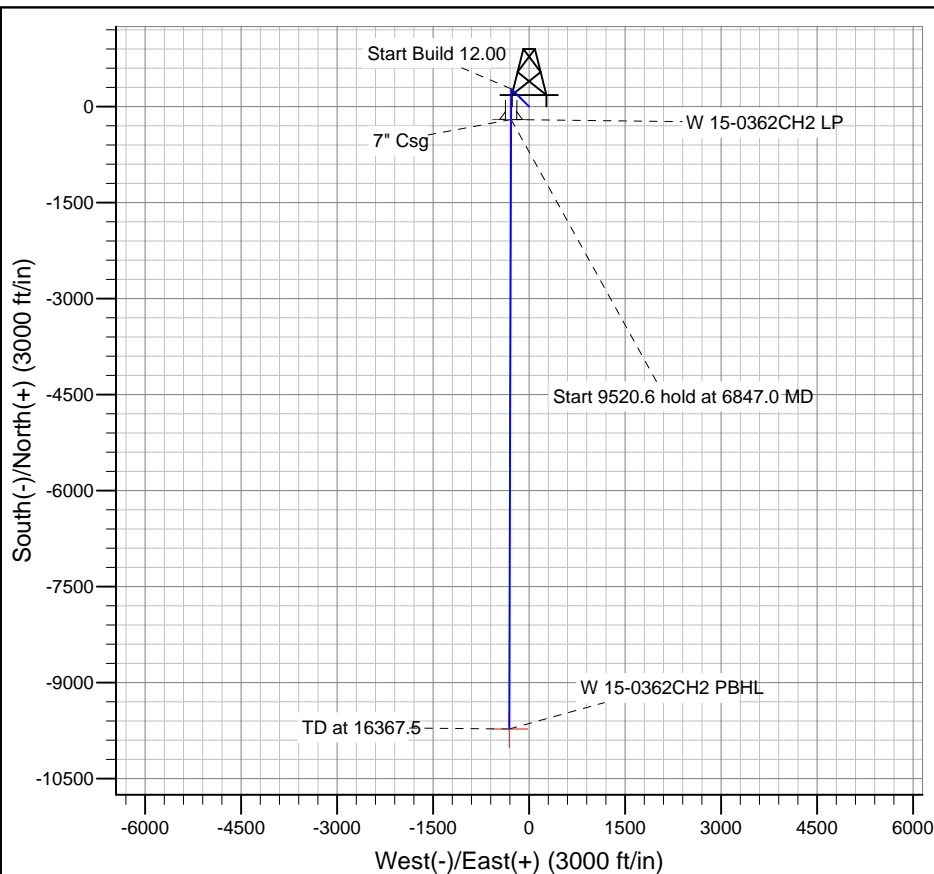
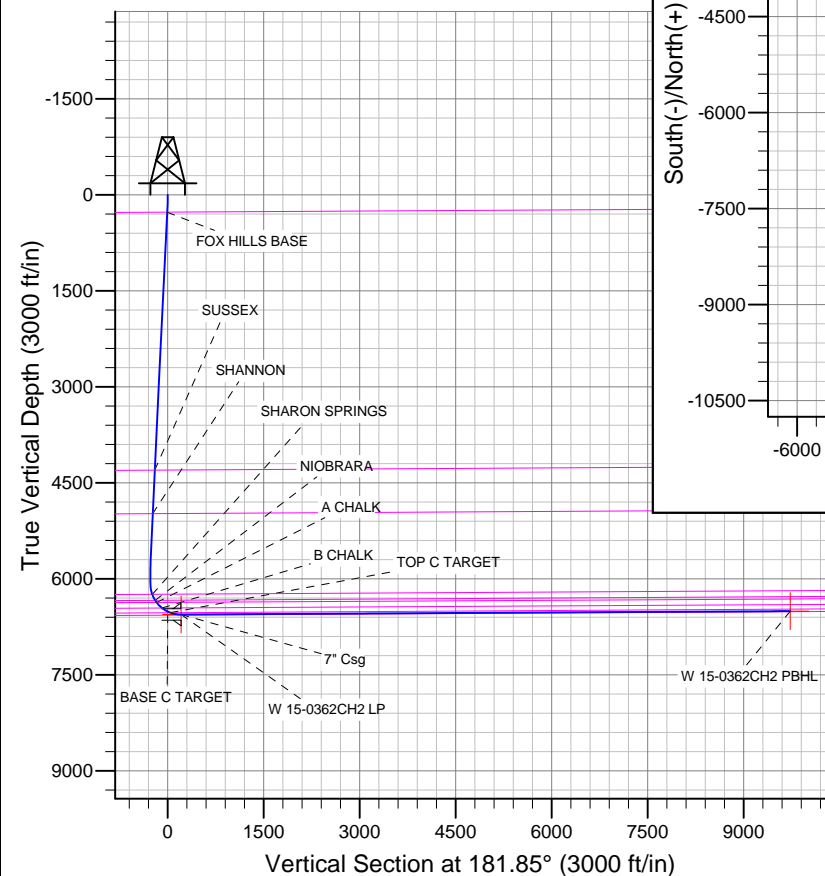
TVDPath	MDPath	Formation
272.0	272.4	BASE C TARGET
4302.2	4312.5	FOX HILLS BASE
4982.3	4994.3	SUSSEX
6242.4	6259.4	SHANNON
6335.1	6362.8	SHARON SPRINGS
6370.0	6405.3	NIOBRARA
6456.5	6527.2	A CHALK
6528.8	6676.5	B CHALK
		TOP C TARGET

## CASING DETAILS

TVD	MD	Name	Size
6558.0	6847.0	7" Csg	7

## WELLBORE TARGET DETAILS

Name	TVD	+N/-S	+E/-W	Shape
W 15-0362CH2 PBHL	6505.0	-9721.8	-313.5	Point
W 15-0362CH2 LP	6558.0	-201.5	-283.4	Point



Azimuths to True North  
Magnetic North: 8.21°

Magnetic Field  
Strength: 52902.8snT  
Dip Angle: 67.09°  
Date: 7/15/2014  
Model: IGRF2010

# Bill Barrett Corp

## Planning Report

<b>Database:</b>	Compass	<b>Local Co-ordinate Reference:</b>	Well Will 6-62-15-0362CH2
<b>Company:</b>	BILL BARRETT CORP	<b>TVD Reference:</b>	kb @ 4772.0ft (Original Well Elev)
<b>Project:</b>	WELD COUNTY, COLORADO	<b>MD Reference:</b>	kb @ 4772.0ft (Original Well Elev)
<b>Site:</b>	Will 6-62-15_22 NENW Pad	<b>North Reference:</b>	True
<b>Well:</b>	Will 6-62-15-0362CH2	<b>Survey Calculation Method:</b>	Minimum Curvature
<b>Wellbore:</b>	Wellbore #1		
<b>Design:</b>	Design #1		

<b>Project</b>	WELD COUNTY, COLORADO		
<b>Map System:</b>	US State Plane 1983	<b>System Datum:</b>	Mean Sea Level
<b>Geo Datum:</b>	North American Datum 1983		
<b>Map Zone:</b>	Colorado Northern Zone		

Site		Will 6-62-15_22 NENW Pad			
Site Position:		Northing:	1,424,895.52 ft	Latitude:	40° 29' 37.111 N
From:	Lat/Long	Easting:	3,330,999.60 ft	Longitude:	104° 18' 35.482 W
Position Uncertainty:	0.0 ft	Slot Radius:	"	Grid Convergence:	0.77 °

Well	Will 6-62-15-0362CH2					
Well Position	+N-S	0.0 ft	Northing:	1,424,895.52 ft	Latitude:	40° 29' 37.111 N
	+E-W	0.0 ft	Easting:	3,330,999.60 ft	Longitude:	104° 18' 35.482 W
Position Uncertainty		0.0 ft	Wellhead Elevation:	ft	Ground Level:	4,750.0 ft

<b>Wellbore</b>	Wellbore #1				
<b>Magnetics</b>	<b>Model Name</b>	<b>Sample Date</b>	<b>Declination (°)</b>	<b>Dip Angle (°)</b>	<b>Field Strength (nT)</b>
	IGRF2010	7/15/2014	8.21	67.09	52,903

<b>Design</b>	Design #1			
<b>Audit Notes:</b>				
<b>Version:</b>	<b>Phase:</b>	PLAN	<b>Tie On Depth:</b>	0.0
<b>Vertical Section:</b>	<b>Depth From (TVD) (ft)</b>	<b>+N/-S (ft)</b>	<b>+E/-W (ft)</b>	<b>Direction (°)</b>
	0.0	0.0	0.0	181.85

<b>Plan Sections</b>										
Measured Depth (ft)	Inclination (°)	Azimuth (°)	Vertical Depth (ft)	+N/-S (ft)	+E/-W (ft)	Dogleg Rate (°/100ft)	Build Rate (°/100ft)	Turn Rate (°/100ft)	TFO (°)	Target
0.0	0.00	0.00	0.0	0.0	0.0	0.00	0.00	0.00	0.00	
201.4	4.03	314.67	201.2	5.0	-5.0	2.00	2.00	0.00	314.67	
5,642.9	4.03	314.67	5,629.3	273.7	-276.8	0.00	0.00	0.00	0.00	
5,844.3	0.00	180.18	5,830.5	278.7	-281.9	2.00	-2.00	0.00	180.00	
6,094.3	0.00	180.18	6,080.5	278.7	-281.9	0.00	0.00	0.00	180.18	
6,847.0	90.32	180.18	6,558.0	-201.5	-283.4	12.00	12.00	0.00	180.18	W 15-0362CH2 LP
16,367.5	90.32	180.18	6,505.0	-9,721.8	-313.5	0.00	0.00	0.00	0.00	W 15-0362CH2 PBI

# Bill Barrett Corp

## Planning Report

<b>Database:</b>	Compass	<b>Local Co-ordinate Reference:</b>	Well Will 6-62-15-0362CH2
<b>Company:</b>	BILL BARRETT CORP	<b>TVD Reference:</b>	kb @ 4772.0ft (Original Well Elev)
<b>Project:</b>	WELD COUNTY, COLORADO	<b>MD Reference:</b>	kb @ 4772.0ft (Original Well Elev)
<b>Site:</b>	Will 6-62-15_22 NENW Pad	<b>North Reference:</b>	True
<b>Well:</b>	Will 6-62-15-0362CH2	<b>Survey Calculation Method:</b>	Minimum Curvature
<b>Wellbore:</b>	Wellbore #1		
<b>Design:</b>	Design #1		

Planned Survey									
Measured Depth (ft)	Inclination (°)	Azimuth (°)	Vertical Depth (ft)	+N/-S (ft)	+E/-W (ft)	Vertical Section (ft)	Dogleg Rate (°/100ft)	Build Rate (°/100ft)	Turn Rate (°/100ft)
0.0	0.00	0.00	0.0	0.0	0.0	0.0	0.00	0.00	0.00
100.0	2.00	314.67	100.0	1.2	-1.2	-1.2	2.00	2.00	0.00
200.0	4.00	314.67	199.8	4.9	-5.0	-4.7	2.00	2.00	0.00
201.4	4.03	314.67	201.2	5.0	-5.0	-4.8	2.00	2.00	0.00
272.4	4.03	314.67	272.0	8.5	-8.6	-8.2	0.00	0.00	0.00
FOX HILLS BASE									
300.0	4.03	314.67	299.6	9.8	-10.0	-9.5	0.00	0.00	0.00
400.0	4.03	314.67	399.3	14.8	-15.0	-14.3	0.00	0.00	0.00
500.0	4.03	314.67	499.1	19.7	-19.9	-19.1	0.00	0.00	0.00
600.0	4.03	314.67	598.8	24.7	-24.9	-23.8	0.00	0.00	0.00
700.0	4.03	314.67	698.6	29.6	-29.9	-28.6	0.00	0.00	0.00
800.0	4.03	314.67	798.4	34.5	-34.9	-33.4	0.00	0.00	0.00
900.0	4.03	314.67	898.1	39.5	-39.9	-38.2	0.00	0.00	0.00
1,000.0	4.03	314.67	997.9	44.4	-44.9	-42.9	0.00	0.00	0.00
1,100.0	4.03	314.67	1,097.6	49.4	-49.9	-47.7	0.00	0.00	0.00
1,200.0	4.03	314.67	1,197.4	54.3	-54.9	-52.5	0.00	0.00	0.00
1,300.0	4.03	314.67	1,297.1	59.2	-59.9	-57.3	0.00	0.00	0.00
1,400.0	4.03	314.67	1,396.9	64.2	-64.9	-62.0	0.00	0.00	0.00
1,500.0	4.03	314.67	1,496.6	69.1	-69.9	-66.8	0.00	0.00	0.00
1,600.0	4.03	314.67	1,596.4	74.0	-74.9	-71.6	0.00	0.00	0.00
1,700.0	4.03	314.67	1,696.1	79.0	-79.9	-76.4	0.00	0.00	0.00
1,800.0	4.03	314.67	1,795.9	83.9	-84.9	-81.1	0.00	0.00	0.00
1,900.0	4.03	314.67	1,895.6	88.9	-89.9	-85.9	0.00	0.00	0.00
2,000.0	4.03	314.67	1,995.4	93.8	-94.9	-90.7	0.00	0.00	0.00
2,100.0	4.03	314.67	2,095.1	98.7	-99.9	-95.5	0.00	0.00	0.00
2,200.0	4.03	314.67	2,194.9	103.7	-104.9	-100.2	0.00	0.00	0.00
2,300.0	4.03	314.67	2,294.7	108.6	-109.9	-105.0	0.00	0.00	0.00
2,400.0	4.03	314.67	2,394.4	113.5	-114.8	-109.8	0.00	0.00	0.00
2,500.0	4.03	314.67	2,494.2	118.5	-119.8	-114.6	0.00	0.00	0.00
2,600.0	4.03	314.67	2,593.9	123.4	-124.8	-119.3	0.00	0.00	0.00
2,700.0	4.03	314.67	2,693.7	128.4	-129.8	-124.1	0.00	0.00	0.00
2,800.0	4.03	314.67	2,793.4	133.3	-134.8	-128.9	0.00	0.00	0.00
2,900.0	4.03	314.67	2,893.2	138.2	-139.8	-133.7	0.00	0.00	0.00
3,000.0	4.03	314.67	2,992.9	143.2	-144.8	-138.4	0.00	0.00	0.00
3,100.0	4.03	314.67	3,092.7	148.1	-149.8	-143.2	0.00	0.00	0.00
3,200.0	4.03	314.67	3,192.4	153.1	-154.8	-148.0	0.00	0.00	0.00
3,300.0	4.03	314.67	3,292.2	158.0	-159.8	-152.8	0.00	0.00	0.00
3,400.0	4.03	314.67	3,391.9	162.9	-164.8	-157.5	0.00	0.00	0.00
3,500.0	4.03	314.67	3,491.7	167.9	-169.8	-162.3	0.00	0.00	0.00
3,600.0	4.03	314.67	3,591.4	172.8	-174.8	-167.1	0.00	0.00	0.00
3,700.0	4.03	314.67	3,691.2	177.7	-179.8	-171.9	0.00	0.00	0.00
3,800.0	4.03	314.67	3,790.9	182.7	-184.8	-176.6	0.00	0.00	0.00
3,900.0	4.03	314.67	3,890.7	187.6	-189.8	-181.4	0.00	0.00	0.00
4,000.0	4.03	314.67	3,990.5	192.6	-194.8	-186.2	0.00	0.00	0.00
4,100.0	4.03	314.67	4,090.2	197.5	-199.8	-191.0	0.00	0.00	0.00
4,200.0	4.03	314.67	4,190.0	202.4	-204.8	-195.7	0.00	0.00	0.00
4,300.0	4.03	314.67	4,289.7	207.4	-209.8	-200.5	0.00	0.00	0.00
4,312.5	4.03	314.67	4,302.2	208.0	-210.4	-201.1	0.00	0.00	0.00
SUSSEX									
4,400.0	4.03	314.67	4,389.5	212.3	-214.7	-205.3	0.00	0.00	0.00
4,500.0	4.03	314.67	4,489.2	217.3	-219.7	-210.1	0.00	0.00	0.00
4,600.0	4.03	314.67	4,589.0	222.2	-224.7	-214.8	0.00	0.00	0.00
4,700.0	4.03	314.67	4,688.7	227.1	-229.7	-219.6	0.00	0.00	0.00
4,800.0	4.03	314.67	4,788.5	232.1	-234.7	-224.4	0.00	0.00	0.00

# Bill Barrett Corp

## Planning Report

<b>Database:</b>	Compass	<b>Local Co-ordinate Reference:</b>	Well Will 6-62-15-0362CH2
<b>Company:</b>	BILL BARRETT CORP	<b>TVD Reference:</b>	kb @ 4772.0ft (Original Well Elev)
<b>Project:</b>	WELD COUNTY, COLORADO	<b>MD Reference:</b>	kb @ 4772.0ft (Original Well Elev)
<b>Site:</b>	Will 6-62-15_22 NENW Pad	<b>North Reference:</b>	True
<b>Well:</b>	Will 6-62-15-0362CH2	<b>Survey Calculation Method:</b>	Minimum Curvature
<b>Wellbore:</b>	Wellbore #1		
<b>Design:</b>	Design #1		

Planned Survey									
Measured Depth (ft)	Inclination (°)	Azimuth (°)	Vertical Depth (ft)	+N/-S (ft)	+E/-W (ft)	Vertical Section (ft)	Dogleg Rate (°/100ft)	Build Rate (°/100ft)	Turn Rate (°/100ft)
4,900.0	4.03	314.67	4,888.2	237.0	-239.7	-229.2	0.00	0.00	0.00
4,994.3	4.03	314.67	4,982.3	241.7	-244.4	-233.7	0.00	0.00	0.00
<b>SHANNON</b>									
5,000.0	4.03	314.67	4,988.0	241.9	-244.7	-233.9	0.00	0.00	0.00
5,100.0	4.03	314.67	5,087.7	246.9	-249.7	-238.7	0.00	0.00	0.00
5,200.0	4.03	314.67	5,187.5	251.8	-254.7	-243.5	0.00	0.00	0.00
5,300.0	4.03	314.67	5,287.2	256.8	-259.7	-248.3	0.00	0.00	0.00
5,400.0	4.03	314.67	5,387.0	261.7	-264.7	-253.0	0.00	0.00	0.00
5,500.0	4.03	314.67	5,486.7	266.6	-269.7	-257.8	0.00	0.00	0.00
5,600.0	4.03	314.67	5,586.5	271.6	-274.7	-262.6	0.00	0.00	0.00
5,642.9	4.03	314.67	5,629.3	273.7	-276.8	-264.6	0.00	0.00	0.00
5,700.0	2.89	314.67	5,686.3	276.1	-279.3	-267.0	2.00	-2.00	0.00
5,800.0	0.89	314.67	5,786.2	278.4	-281.6	-269.2	2.00	-2.00	0.00
5,844.3	0.00	180.18	5,830.5	278.7	-281.9	-269.4	2.00	-2.00	0.00
5,900.0	0.00	180.18	5,886.2	278.7	-281.9	-269.4	0.00	0.00	0.00
6,000.0	0.00	180.18	5,986.2	278.7	-281.9	-269.4	0.00	0.00	0.00
6,094.3	0.00	180.18	6,080.5	278.7	-281.9	-269.4	0.00	0.00	0.00
6,100.0	0.68	180.18	6,086.2	278.6	-281.9	-269.4	12.00	12.00	0.00
6,200.0	12.68	180.18	6,185.4	267.0	-281.9	-257.8	12.00	12.00	0.00
6,259.4	19.81	180.18	6,242.4	250.4	-282.0	-241.2	12.00	12.00	0.00
<b>SHARON SPRINGS</b>									
6,300.0	24.68	180.18	6,279.9	235.0	-282.0	-225.8	12.00	12.00	0.00
6,362.8	32.22	180.18	6,335.1	205.1	-282.1	-195.9	12.00	12.00	0.00
<b>NIOBRARA</b>									
6,400.0	36.68	180.18	6,365.8	184.1	-282.2	-174.9	12.00	12.00	0.00
6,405.3	37.32	180.18	6,370.0	180.9	-282.2	-171.7	12.00	12.00	0.00
<b>A CHALK</b>									
6,500.0	48.68	180.18	6,439.1	116.4	-282.4	-107.3	12.00	12.00	0.00
6,527.2	51.95	180.18	6,456.5	95.5	-282.4	-86.3	12.00	12.00	0.00
<b>B CHALK</b>									
6,600.0	60.68	180.18	6,496.9	35.0	-282.6	-25.9	12.00	12.00	0.00
6,676.5	69.86	180.18	6,528.8	-34.4	-282.9	43.5	12.00	12.00	0.00
<b>TOP C TARGET</b>									
6,700.0	72.68	180.18	6,536.4	-56.7	-282.9	65.8	12.00	12.00	0.00
6,800.0	84.68	180.18	6,556.0	-154.5	-283.2	163.6	12.00	12.00	0.00
6,847.0	90.32	180.18	6,558.0	-201.5	-283.4	210.5	11.99	11.99	0.00
<b>7" Csg - W 15-0362CH2 LP</b>									
6,900.0	90.32	180.18	6,557.7	-254.5	-283.5	263.5	0.01	0.01	0.00
7,000.0	90.32	180.18	6,557.1	-354.5	-283.9	363.4	0.00	0.00	0.00
7,100.0	90.32	180.18	6,556.6	-454.5	-284.2	463.4	0.00	0.00	0.00
7,200.0	90.32	180.18	6,556.0	-554.5	-284.5	563.4	0.00	0.00	0.00
7,300.0	90.32	180.18	6,555.5	-654.5	-284.8	663.3	0.00	0.00	0.00
7,400.0	90.32	180.18	6,554.9	-754.5	-285.1	763.3	0.00	0.00	0.00
7,500.0	90.32	180.18	6,554.4	-854.5	-285.5	863.2	0.00	0.00	0.00
7,600.0	90.32	180.18	6,553.8	-954.5	-285.8	963.2	0.00	0.00	0.00
7,700.0	90.32	180.18	6,553.3	-1,054.5	-286.1	1,063.1	0.00	0.00	0.00
7,800.0	90.32	180.18	6,552.7	-1,154.5	-286.4	1,163.1	0.00	0.00	0.00
7,900.0	90.32	180.18	6,552.1	-1,254.5	-286.7	1,263.1	0.00	0.00	0.00
8,000.0	90.32	180.18	6,551.6	-1,354.5	-287.0	1,363.0	0.00	0.00	0.00
8,100.0	90.32	180.18	6,551.0	-1,454.5	-287.4	1,463.0	0.00	0.00	0.00
8,200.0	90.32	180.18	6,550.5	-1,554.5	-287.7	1,562.9	0.00	0.00	0.00
8,300.0	90.32	180.18	6,549.9	-1,654.5	-288.0	1,662.9	0.00	0.00	0.00
8,400.0	90.32	180.18	6,549.4	-1,754.5	-288.3	1,762.8	0.00	0.00	0.00

# Bill Barrett Corp

## Planning Report

<b>Database:</b>	Compass	<b>Local Co-ordinate Reference:</b>	Well Will 6-62-15-0362CH2
<b>Company:</b>	BILL BARRETT CORP	<b>TVD Reference:</b>	kb @ 4772.0ft (Original Well Elev)
<b>Project:</b>	WELD COUNTY, COLORADO	<b>MD Reference:</b>	kb @ 4772.0ft (Original Well Elev)
<b>Site:</b>	Will 6-62-15_22 NENW Pad	<b>North Reference:</b>	True
<b>Well:</b>	Will 6-62-15-0362CH2	<b>Survey Calculation Method:</b>	Minimum Curvature
<b>Wellbore:</b>	Wellbore #1		
<b>Design:</b>	Design #1		

Planned Survey									
Measured Depth (ft)	Inclination (°)	Azimuth (°)	Vertical Depth (ft)	+N/-S (ft)	+E/-W (ft)	Vertical Section (ft)	Dogleg Rate (°/100ft)	Build Rate (°/100ft)	Turn Rate (°/100ft)
8,500.0	90.32	180.18	6,548.8	-1,854.4	-288.6	1,862.8	0.00	0.00	0.00
8,600.0	90.32	180.18	6,548.2	-1,954.4	-288.9	1,962.7	0.00	0.00	0.00
8,700.0	90.32	180.18	6,547.7	-2,054.4	-289.3	2,062.7	0.00	0.00	0.00
8,800.0	90.32	180.18	6,547.1	-2,154.4	-289.6	2,162.7	0.00	0.00	0.00
8,900.0	90.32	180.18	6,546.6	-2,254.4	-289.9	2,262.6	0.00	0.00	0.00
9,000.0	90.32	180.18	6,546.0	-2,354.4	-290.2	2,362.6	0.00	0.00	0.00
9,100.0	90.32	180.18	6,545.5	-2,454.4	-290.5	2,462.5	0.00	0.00	0.00
9,200.0	90.32	180.18	6,544.9	-2,554.4	-290.8	2,562.5	0.00	0.00	0.00
9,300.0	90.32	180.18	6,544.3	-2,654.4	-291.2	2,662.4	0.00	0.00	0.00
9,400.0	90.32	180.18	6,543.8	-2,754.4	-291.5	2,762.4	0.00	0.00	0.00
9,500.0	90.32	180.18	6,543.2	-2,854.4	-291.8	2,862.4	0.00	0.00	0.00
9,600.0	90.32	180.18	6,542.7	-2,954.4	-292.1	2,962.3	0.00	0.00	0.00
9,700.0	90.32	180.18	6,542.1	-3,054.4	-292.4	3,062.3	0.00	0.00	0.00
9,800.0	90.32	180.18	6,541.6	-3,154.4	-292.7	3,162.2	0.00	0.00	0.00
9,900.0	90.32	180.18	6,541.0	-3,254.4	-293.1	3,262.2	0.00	0.00	0.00
10,000.0	90.32	180.18	6,540.4	-3,354.4	-293.4	3,362.1	0.00	0.00	0.00
10,100.0	90.32	180.18	6,539.9	-3,454.4	-293.7	3,462.1	0.00	0.00	0.00
10,200.0	90.32	180.18	6,539.3	-3,554.4	-294.0	3,562.0	0.00	0.00	0.00
10,300.0	90.32	180.18	6,538.8	-3,654.4	-294.3	3,662.0	0.00	0.00	0.00
10,400.0	90.32	180.18	6,538.2	-3,754.4	-294.6	3,762.0	0.00	0.00	0.00
10,500.0	90.32	180.18	6,537.7	-3,854.4	-295.0	3,861.9	0.00	0.00	0.00
10,600.0	90.32	180.18	6,537.1	-3,954.4	-295.3	3,961.9	0.00	0.00	0.00
10,700.0	90.32	180.18	6,536.6	-4,054.4	-295.6	4,061.8	0.00	0.00	0.00
10,800.0	90.32	180.18	6,536.0	-4,154.4	-295.9	4,161.8	0.00	0.00	0.00
10,900.0	90.32	180.18	6,535.4	-4,254.4	-296.2	4,261.7	0.00	0.00	0.00
11,000.0	90.32	180.18	6,534.9	-4,354.4	-296.5	4,361.7	0.00	0.00	0.00
11,100.0	90.32	180.18	6,534.3	-4,454.4	-296.9	4,461.6	0.00	0.00	0.00
11,200.0	90.32	180.18	6,533.8	-4,554.4	-297.2	4,561.6	0.00	0.00	0.00
11,300.0	90.32	180.18	6,533.2	-4,654.4	-297.5	4,661.6	0.00	0.00	0.00
11,400.0	90.32	180.18	6,532.7	-4,754.4	-297.8	4,761.5	0.00	0.00	0.00
11,500.0	90.32	180.18	6,532.1	-4,854.4	-298.1	4,861.5	0.00	0.00	0.00
11,600.0	90.32	180.18	6,531.5	-4,954.4	-298.4	4,961.4	0.00	0.00	0.00
11,700.0	90.32	180.18	6,531.0	-5,054.4	-298.8	5,061.4	0.00	0.00	0.00
11,800.0	90.32	180.18	6,530.4	-5,154.4	-299.1	5,161.3	0.00	0.00	0.00
11,900.0	90.32	180.18	6,529.9	-5,254.4	-299.4	5,261.3	0.00	0.00	0.00
12,000.0	90.32	180.18	6,529.3	-5,354.4	-299.7	5,361.3	0.00	0.00	0.00
12,100.0	90.32	180.18	6,528.8	-5,454.4	-300.0	5,461.2	0.00	0.00	0.00
12,200.0	90.32	180.18	6,528.2	-5,554.4	-300.3	5,561.2	0.00	0.00	0.00
12,300.0	90.32	180.18	6,527.6	-5,654.4	-300.7	5,661.1	0.00	0.00	0.00
12,400.0	90.32	180.18	6,527.1	-5,754.4	-301.0	5,761.1	0.00	0.00	0.00
12,500.0	90.32	180.18	6,526.5	-5,854.4	-301.3	5,861.0	0.00	0.00	0.00
12,600.0	90.32	180.18	6,526.0	-5,954.4	-301.6	5,961.0	0.00	0.00	0.00
12,700.0	90.32	180.18	6,525.4	-6,054.4	-301.9	6,060.9	0.00	0.00	0.00
12,800.0	90.32	180.18	6,524.9	-6,154.4	-302.2	6,160.9	0.00	0.00	0.00
12,900.0	90.32	180.18	6,524.3	-6,254.4	-302.6	6,260.9	0.00	0.00	0.00
13,000.0	90.32	180.18	6,523.7	-6,354.4	-302.9	6,360.8	0.00	0.00	0.00
13,100.0	90.32	180.18	6,523.2	-6,454.4	-303.2	6,460.8	0.00	0.00	0.00
13,200.0	90.32	180.18	6,522.6	-6,554.4	-303.5	6,560.7	0.00	0.00	0.00
13,300.0	90.32	180.18	6,522.1	-6,654.4	-303.8	6,660.7	0.00	0.00	0.00
13,400.0	90.32	180.18	6,521.5	-6,754.3	-304.1	6,760.6	0.00	0.00	0.00
13,500.0	90.32	180.18	6,521.0	-6,854.3	-304.5	6,860.6	0.00	0.00	0.00
13,600.0	90.32	180.18	6,520.4	-6,954.3	-304.8	6,960.6	0.00	0.00	0.00
13,700.0	90.32	180.18	6,519.8	-7,054.3	-305.1	7,060.5	0.00	0.00	0.00
13,800.0	90.32	180.18	6,519.3	-7,154.3	-305.4	7,160.5	0.00	0.00	0.00

# Bill Barrett Corp

## Planning Report

<b>Database:</b>	Compass	<b>Local Co-ordinate Reference:</b>	Well Will 6-62-15-0362CH2
<b>Company:</b>	BILL BARRETT CORP	<b>TVD Reference:</b>	kb @ 4772.0ft (Original Well Elev)
<b>Project:</b>	WELD COUNTY, COLORADO	<b>MD Reference:</b>	kb @ 4772.0ft (Original Well Elev)
<b>Site:</b>	Will 6-62-15_22 NENW Pad	<b>North Reference:</b>	True
<b>Well:</b>	Will 6-62-15-0362CH2	<b>Survey Calculation Method:</b>	Minimum Curvature
<b>Wellbore:</b>	Wellbore #1		
<b>Design:</b>	Design #1		

### Planned Survey

Measured Depth (ft)	Inclination (°)	Azimuth (°)	Vertical Depth (ft)	+N/-S (ft)	+E/-W (ft)	Vertical Section (ft)	Dogleg Rate (°/100ft)	Build Rate (°/100ft)	Turn Rate (°/100ft)
13,900.0	90.32	180.18	6,518.7	-7,254.3	-305.7	7,260.4	0.00	0.00	0.00
14,000.0	90.32	180.18	6,518.2	-7,354.3	-306.0	7,360.4	0.00	0.00	0.00
14,100.0	90.32	180.18	6,517.6	-7,454.3	-306.4	7,460.3	0.00	0.00	0.00
14,200.0	90.32	180.18	6,517.1	-7,554.3	-306.7	7,560.3	0.00	0.00	0.00
14,300.0	90.32	180.18	6,516.5	-7,654.3	-307.0	7,660.2	0.00	0.00	0.00
14,400.0	90.32	180.18	6,516.0	-7,754.3	-307.3	7,760.2	0.00	0.00	0.00
14,500.0	90.32	180.18	6,515.4	-7,854.3	-307.6	7,860.2	0.00	0.00	0.00
14,600.0	90.32	180.18	6,514.8	-7,954.3	-307.9	7,960.1	0.00	0.00	0.00
14,700.0	90.32	180.18	6,514.3	-8,054.3	-308.3	8,060.1	0.00	0.00	0.00
14,800.0	90.32	180.18	6,513.7	-8,154.3	-308.6	8,160.0	0.00	0.00	0.00
14,900.0	90.32	180.18	6,513.2	-8,254.3	-308.9	8,260.0	0.00	0.00	0.00
15,000.0	90.32	180.18	6,512.6	-8,354.3	-309.2	8,359.9	0.00	0.00	0.00
15,100.0	90.32	180.18	6,512.1	-8,454.3	-309.5	8,459.9	0.00	0.00	0.00
15,200.0	90.32	180.18	6,511.5	-8,554.3	-309.8	8,559.9	0.00	0.00	0.00
15,300.0	90.32	180.18	6,510.9	-8,654.3	-310.2	8,659.8	0.00	0.00	0.00
15,400.0	90.32	180.18	6,510.4	-8,754.3	-310.5	8,759.8	0.00	0.00	0.00
15,500.0	90.32	180.18	6,509.8	-8,854.3	-310.8	8,859.7	0.00	0.00	0.00
15,600.0	90.32	180.18	6,509.3	-8,954.3	-311.1	8,959.7	0.00	0.00	0.00
15,700.0	90.32	180.18	6,508.7	-9,054.3	-311.4	9,059.6	0.00	0.00	0.00
15,800.0	90.32	180.18	6,508.2	-9,154.3	-311.7	9,159.6	0.00	0.00	0.00
15,900.0	90.32	180.18	6,507.6	-9,254.3	-312.1	9,259.5	0.00	0.00	0.00
16,000.0	90.32	180.18	6,507.0	-9,354.3	-312.4	9,359.5	0.00	0.00	0.00
16,100.0	90.32	180.18	6,506.5	-9,454.3	-312.7	9,459.5	0.00	0.00	0.00
16,200.0	90.32	180.18	6,505.9	-9,554.3	-313.0	9,559.4	0.00	0.00	0.00
16,300.0	90.32	180.18	6,505.4	-9,654.3	-313.3	9,659.4	0.00	0.00	0.00
16,367.5	90.32	180.18	6,505.0	-9,721.8	-313.5	9,726.9	0.00	0.00	0.00
W 15-0362CH2 PBHL									

### Casing Points

Measured Depth (ft)	Vertical Depth (ft)	Name	Casing Diameter (")	Hole Diameter (")
6,847.0	6,558.0	7" Csg	7	8-3/4

### Formations

Measured Depth (ft)	Vertical Depth (ft)	Name	Lithology	Dip (°)	Dip Direction (°)
272.4	272.0	FOX HILLS BASE		-0.32	180.18
4,312.5	4,301.0	SUSSEX		-0.32	180.18
4,994.3	4,981.0	SHANNON		-0.32	180.18
6,259.4	6,241.0	SHARON SPRINGS		-0.32	180.18
6,362.8	6,334.0	NIOBRARA		-0.32	180.18
6,405.3	6,369.0	A CHALK		-0.32	180.18
6,527.2	6,456.0	B CHALK		-0.32	180.18
6,676.5	6,529.0	TOP C TARGET		-0.32	180.18
	6,568.0	BASE C TARGET		-0.32	180.18

**Bill Barrett Corp**  
Planning Report

<b>Database:</b>	Compass	<b>Local Co-ordinate Reference:</b>	Well Will 6-62-15-0362CH2
<b>Company:</b>	BILL BARRETT CORP	<b>TVD Reference:</b>	kb @ 4772.0ft (Original Well Elev)
<b>Project:</b>	WELD COUNTY, COLORADO	<b>MD Reference:</b>	kb @ 4772.0ft (Original Well Elev)
<b>Site:</b>	Will 6-62-15_22 NENW Pad	<b>North Reference:</b>	True
<b>Well:</b>	Will 6-62-15-0362CH2	<b>Survey Calculation Method:</b>	Minimum Curvature
<b>Wellbore:</b>	Wellbore #1		
<b>Design:</b>	Design #1		