

The Road to Excellence Starts with Safety

Sold To #: 352431	Ship To #: 3207601	Quote #: 0021861976	Sales Order #: 0901380538
Customer: CONOCO/PHILLIPS COMPANY EBUSINESS		Customer Rep: MIKE JOHNSON	
Well Name: RESERVE 3-65 26	Well #: 1 H	API/UWI #: 05-005-09779-00	
Field: WILDCAT	City (SAP): AUR	County/Parish: ARAPAHOE	State: COLORADO
Legal Description: NW NW-26-3S-65W-660FNL-400FWL			
Contractor:		Rig/Platform Name/Num: H&P 276	
Job BOM: 7521			
Well Type: DIRECTIONAL OIL			
Sales Person: HALAMERICA\HX38199		Srv Supervisor: Joseph Barras	
Job			

Formation Name			
Formation Depth (MD)	Top		Bottom
Form Type			BHST
Job depth MD	2038ft		Job Depth TVD
Water Depth			Wk Ht Above Floor
Perforation Depth (MD)	From		To

Well Data										
Description	New / Used	Size in	ID in	Weight lbm/ft	Thread	Grade	Top MD ft	Bottom MD ft	Top TVD ft	Bottom TVD ft
Casing		16	15.5				0	100		
Casing		9.625	8.921	36	STC	J-55	0	2028		0
Open Hole Section			13.5				100	2038		

Tools and Accessories									
Type	Size in	Qty	Make	Depth ft		Type	Size in	Qty	Make
Guide Shoe	9.625	1		2028		Top Plug	9.625	1	HES
Float Shoe	9.625	1				Bottom Plug	9.625	1	HES
Float Collar	9.625	1				SSR plug set	9.625	1	HES
Insert Float	9.625	1				Plug Container	9.625	1	HES
Stage Tool	9.625	1				Centralizers	9.625	1	HES

Miscellaneous Materials									
Gelling Agt		Conc		Surfactant		Conc		Acid Type	
Treatment Fld		Conc		Inhibitor		Conc		Sand Type	
								Qty	Conc
								Size	Qty

Fluid Data										
Stage/Plug #: 1										
Fluid #	Stage Type	Fluid Name	Qty	Qty UoM	Mixing Density lbm/gal	Yield ft3/sack	Mix Fluid Gal	Rate bbl/min	Total Mix Fluid Gal	
1	Clean Spacer III	CLEANSPECER III	0	bbl	10.5	3.86	35.1	5		
35.10 gal/bbl		FRESH WATER								
Fluid #	Stage Type	Fluid Name	Qty	Qty UoM	Mixing Density lbm/gal	Yield ft3/sack	Mix Fluid Gal	Rate bbl/min	Total Mix Fluid Gal	

2	SwiftCem B2	SWIFTCEM (TM) SYSTEM		sack	12	2.56		6	15.09
15.09 Gal		FRESH WATER							
Fluid #	Stage Type	Fluid Name	Qty	Qty UoM	Mixing Density lbm/gal	Yield ft3/sack	Mix Fluid Gal	Rate bbl/mi n	Total Mix Fluid Gal
3	SwiftCem B2	SWIFTCEM (TM) SYSTEM		sack	13	2.01		6	10.99
10.99 Gal		FRESH WATER							
Fluid #	Stage Type	Fluid Name	Qty	Qty UoM	Mixing Density lbm/gal	Yield ft3/sack	Mix Fluid Gal	Rate bbl/mi n	Total Mix Fluid Gal
4	Displacement		0	bbl	8.5				
Cement Left In Pipe		Amount	45 ft		Reason		Shoe Joint		
Comment									

Summary Report



Crew: _____

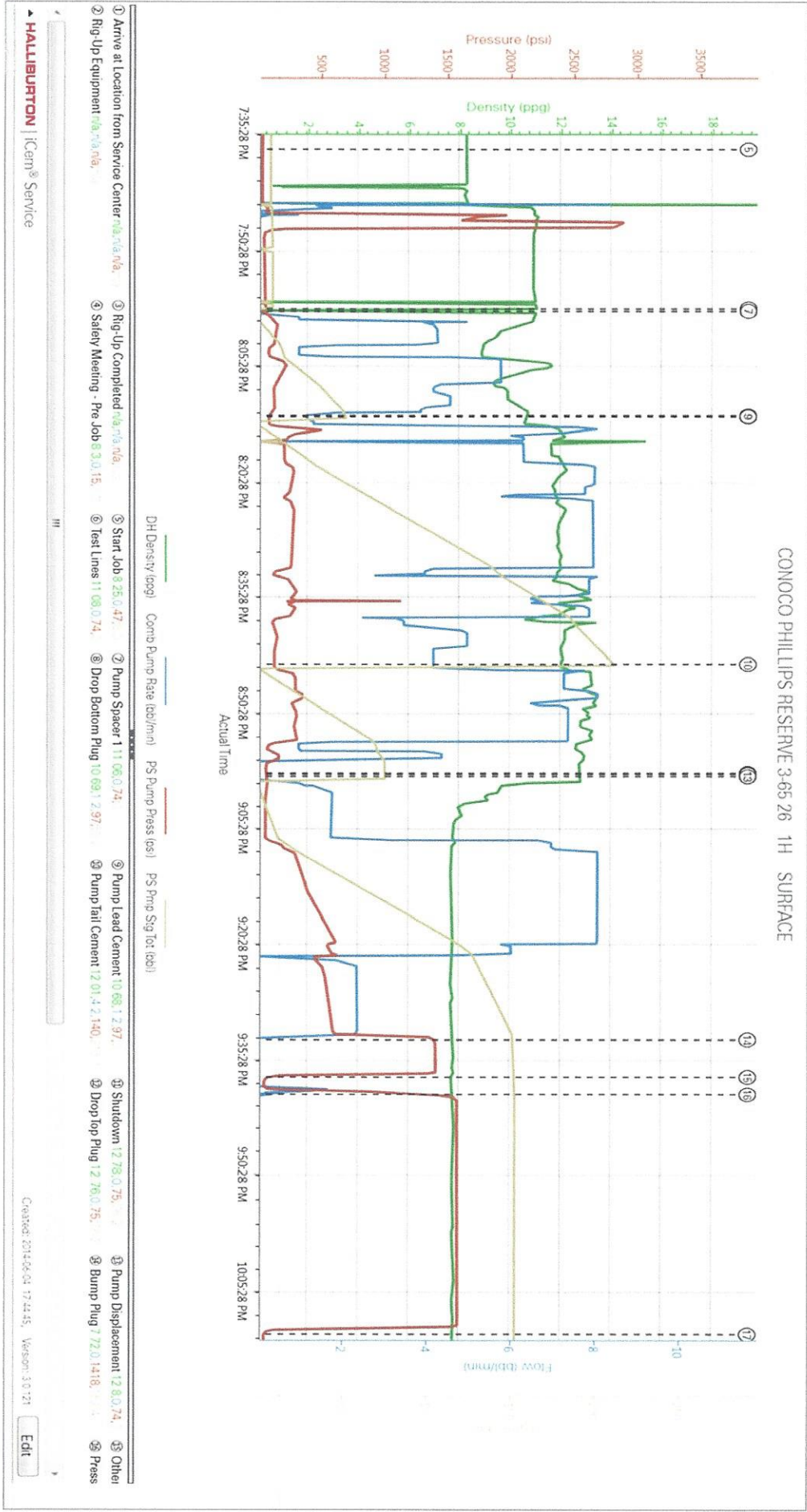
Job Start Date: 6/4/2014

Sales Order #: 0901380538
WO #: 0901380538
PO/AFE #: NACustomer: CONOCO/PHILLIPS COMPANY
EBUSINESS
UWI / API Number: 05-005-09779-00
Well Name: RESERVE 3-65 26
Well No: 1 HField: WILDCAT
County/Parish: ARAPAHOE
State: COLORADO
Latitude: 39.767172
Longitude: -104.639147
Sect / Twn / Rng: 26/3/65Job Type: CMT SURFACE
CASING BOM
Service Supervisor: Joseph Barras
Cust Rep Name: MIKE JOHNSON
Cust Rep Phone #:

Remarks:		
The Information Stated Herein Is Correct	Customer Representative Signature	Date
	Customer Representative Printed Name	

2.0 Attachments

2.1 CONOCO PHILLIPS RESERVE 3-65 26 1 H SURFACE-Custom Results.png



1.6 Job Event Log

Type	Seq. No.	Activity	Graph Label	Date	Time	Source	DH Density (ppg)	Comb Pump Rate (bbl/min)	PS Pump Press (psi)	PS Pmp Sig Tot (bbl)	Comment
Event	1	Arrive at Location from Service Center	Arrive at Location from Service Center	6/4/2014	16:45:00	USER					
Event	2	Rig-Up Equipment	Rig-Up Equipment	6/4/2014	17:00:00	USER					
Event	3	Rig-Up Completed	Rig-Up Completed	6/4/2014	17:55:00	USER					
Event	4	Safety Meeting - Pre Job	Safety Meeting - Pre Job	6/4/2014	18:00:33	USER	8.30	0.00	15.00	8.3	WITH RIG CREW AND HES
Event	5	Start Job	Start Job	6/4/2014	19:37:45	COM4	8.25	0.00	47.00	8.3	
Event	6	Test Lines	Test Lines	6/4/2014	19:58:17	COM4	11.08	0.00	74.00	0.0	TEST TO 2500 PSI NO VISIBLE LEAKS
Event	7	Pump Spacer 1	Pump Spacer 1	6/4/2014	19:58:36	COM4	11.06	0.00	74.00	0.0	50 BBL CLEAN SPACER III @ 10.5 PPG /3.86 YIELD /35.1 GAL/SK
Event	8	Drop Bottom Plug	Drop Bottom Plug	6/4/2014	20:12:11	COM4	10.69	1.20	97.00	53.2	PRELOADED
Event	9	Pump Lead Cement	Pump Lead Cement	6/4/2014	20:12:19	COM4	10.68	1.20	97.00	0.0	202. BBL OF SW/ITCEM @ 12.0 PPG /2.56 YIELD /15.09 GAL/SK
Event	10	Pump Tail Cement	Pump Tail Cement	6/4/2014	20:44:27	COM4	12.01	4.20	140.00	213.7	71 BBL OF SW/ITCEM @ 13.0 PPG /2.01 YIELD /10.99 GAL/SK
Event	11	Shutdown	Shutdown	6/4/2014	20:58:32	COM4	12.78	0.00	75.00	76.2	
Event	12	Drop Top Plug	Drop Top Plug	6/4/2014	20:58:39	COM4	12.76	0.00	75.00	76.2	PRELOADED
Event	13	Pump Displacement	Pump Displacement	6/4/2014	20:58:57	COM4	12.80	0.00	74.00	0.0	RIG WATER WITH CEMENT TO SURFACE @ 65 BBL INTO DIPLACING /LANDED @ 418 PSI
Event	14	Bump Plug	Bump Plug	6/4/2014	21:33:04	COM4	7.72	0.00	1418.00	152.4	1352 PSI
Event	15	Other	Other	6/4/2014	21:37:59	COM4	7.69	0.00	65.00	152.4	
Event	16	Pressure Up Well	Pressure Up Well	6/4/2014	21:40:17	COM4	7.77	0.00	1546.00	153.4	CASING TEST @ 1500 PSI FOR 15 MIN
Event	17	End Job	End Job	6/4/2014	22:11:18	COM4	7.73	0.00	60.00	153.4	

HALLIBURTON

CONOCO PHILLIPS NORTH SLOPE EBUS
901380538
CONOCO PHILLIPS RESERVE 3-65 26 1 H SURFACE

Event	18	Rig-Down Equipment	Rig-Down Equipment	6/4/2014	22:15:00	USER	7.74	0.00	59.00	153.4
Event	19	Return to Service Center from Job	Return to Service Center from Job	6/4/2014	23:30:00	USER				

HALLIBURTON ENERGY SERVICES

M. S. D. S. RECEIPT DOCUMENT

This receipt page is intended for use with Material Safety Data Sheets supplied by Halliburton Energy Services. The recipients of these data sheets should consult the OSHA Safety and Health Standards (29 CFR 1910), particularly subpart G - Occupational Health and Environmental Control, and subpart I - Personal Protective Equipment, for general guidance on control of potential Occupational Health and Safety Hazards.

This document provides the customer the instructions necessary to utilize the M. S. D. S. Safety Sheets and confirms that Halliburton Energy Services offers the Customer the communication for discussion on Chemical Safety of the provided materials.

Customer Signature

Company : CONOCO PHILIPS

Lease, Well Name, Nbr : RESERVE 3-65 26

Ticket # : 901380538

Location : AURORA ,CO

(To be completed by Service Supervisor)