



Weatherford®

Tooke Rockies, Inc.
(A Weatherford Company)

884 Implement Dr.
Dickinson, ND 58601
701-227-4408

717 West Platte
PO BOX 435
Casper, WY 82601
307-265-2124

Surface Logging Systems

Scale 1:240 (5"=100') Imperial
Measured Depth Log

Well Name: Reserve 3-65 26 1 H

API: 05-001-09779-00

Location: NW/NW, Sec 26, T3S-R65W. Arapahoe County, CO

License Number: API- 05-001-09779-00

Region: DJ Basin

Spud Date: 5//14 /

Drilling Completed: 6//2014

Surface Coordinates: 660' FNL & 400' FWL of NW/NW 26 T3S-R65W

Bottom Hole 660' FNL & 460' FEL of NE/NE 26 T3S-R65W

Coordinates:

Ground Elevation (ft): 5586

K.B. Elevation (ft): 5510

Logged Interval (ft): 7000 To:

Total Depth (ft):

Formation: Niobrara

Type of Drilling Fluid: INVERT/OBM

Printed by MUD.LOG from WellSight Systems 1-800-447-1534 www.WellSight.com

OPERATOR

Company: Conoco/Phillips

Address: Attn: Abby Thornton

Three Westlake Park, Rm 14013

550 Westlake Park Blvd, Houston, TX 77079, Office: 832-486-2543.

GEOLOGIST

Name: Gabriel Genitempo, Richard Wagner

Company: Tooke Rockies/ Weatherford SLS

Address: PO Box 435

Casper, WY. 82602

307.265.2124

Supervision

Project Geologist: Barbara Tillotson

Drilling Engineer: Gary Hamilton, Ben Tolman, John Bengé- Conoco/Phillips

Drilling Sup: Bob Strickler- Conoco/Phillips

Company Rep: Wayne Morgan, Mike Johnson, (Day Leads)

Company Rep: Clint Valentine, Clint Goins (Night Leads)

Well Site Safety: Rainey Schexnider, Jeff Frantz

Contact Geologist: Abby Thornton - Conoco/Phillips

Drilling & Comp. Mgr: Derly Gonzalez-Conoco/Phillips

Comments

Drilling Co.--H & P, Rig #276

Toolpusher- Duane Cyr, Ted Howell

Dir. Co.- Sperry

Mud Co.- Baroid/Haliburton, Dave Howell, Alex Blau

ROCK TYPES

Anhy
Bent
Brec
Cht

Clyst
Coal
Congl
Dol

Gyp
Igne
Lmst
Meta

Mrlst
Salt
Shale
Shcol

Shgy
Sltst
Ss
Till

ACCESSORIES

MINERAL

Anhy
Arggrn
Arg
Bent
Bit
Brecfrag
Calc
Carb
Chtdk
Chtlt
Dol
Feldspar
Ferrpel
Ferr
Glau

Gyp
Hvymin
Kaol
Marl
Minxl
Nodule
Phos
Pyr
Salt
Sandy
Silt
Sil
Sulphur
Tuff

FOSSIL

Algae
Amph
Belm
Bioclst
Brach
Bryozoa
Cephal
Coral
Crin
Echin
Fish
Foram
Fossil
Gastro
Oolite

Ostra
Pelec
Pellet
Pisolite
Plant
Strom

STRINGER

Anhy
Arg
Bent
Coal
Dol
Gyp
Ls
Mrst

Sltstrg
Ssstrg

TEXTURE

Boundst
Chalky
Cryxln
Earthy
Finexln
Grainst
Lithogr
Microxln
Mudst
Packst
Wackest

OTHER SYMBOLS

INTERVALS

Core
Dst

EVENTS

Rft
Sidewall

POROSITY TYPE

Earthy
Fenest
Fracture
Inter
Moldic
Organic

Pinpoint
Vuggy

SORTING

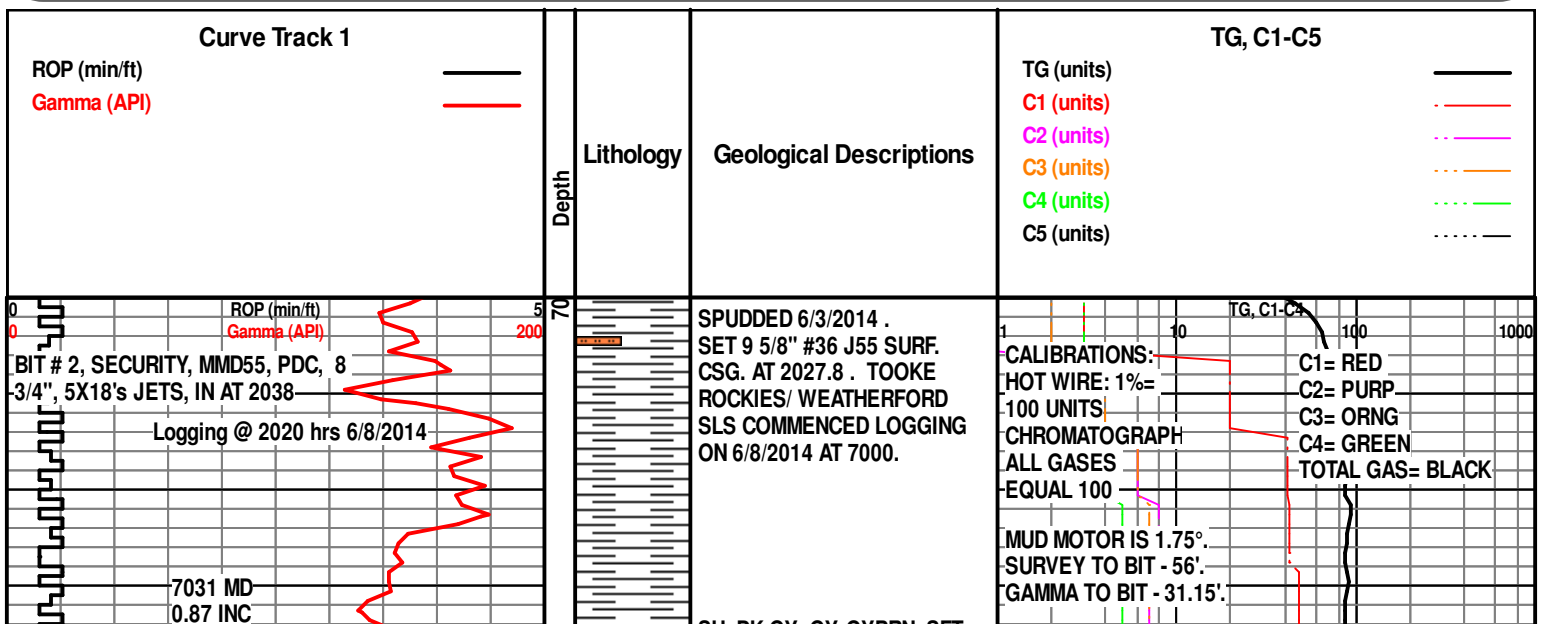
Well
Moderate
Poor

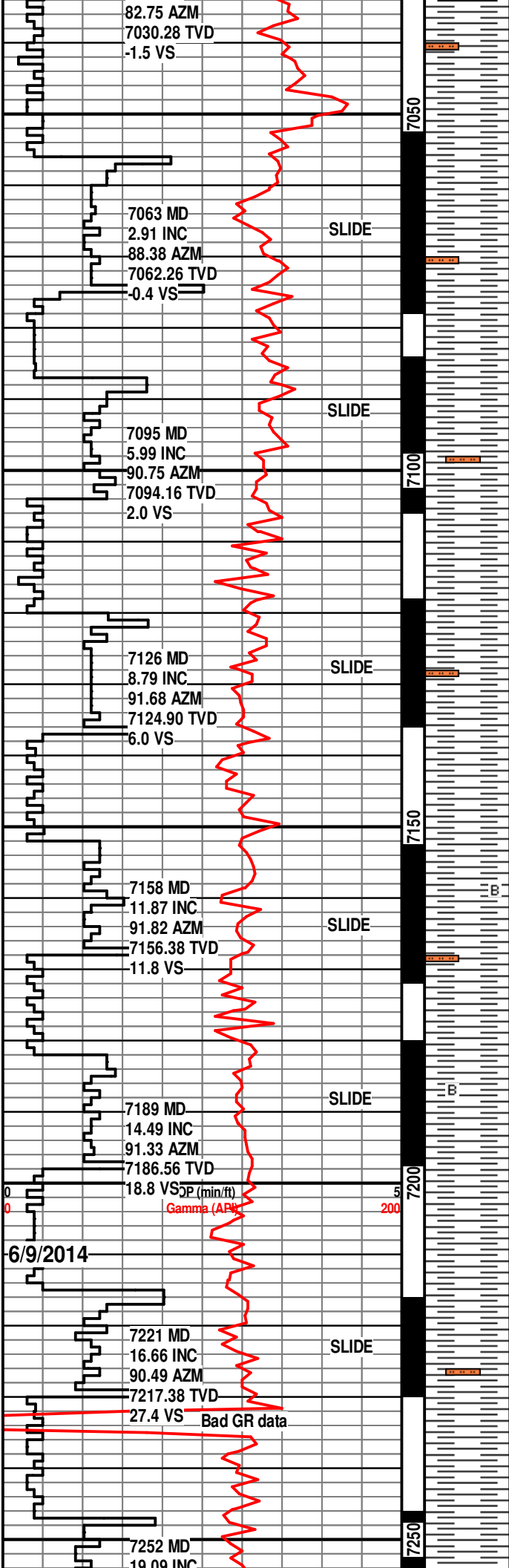
ROUNDING

Rounded
Subrnd
Subang
Angular

OIL SHOWS

Even
Spotted
Ques
Dead





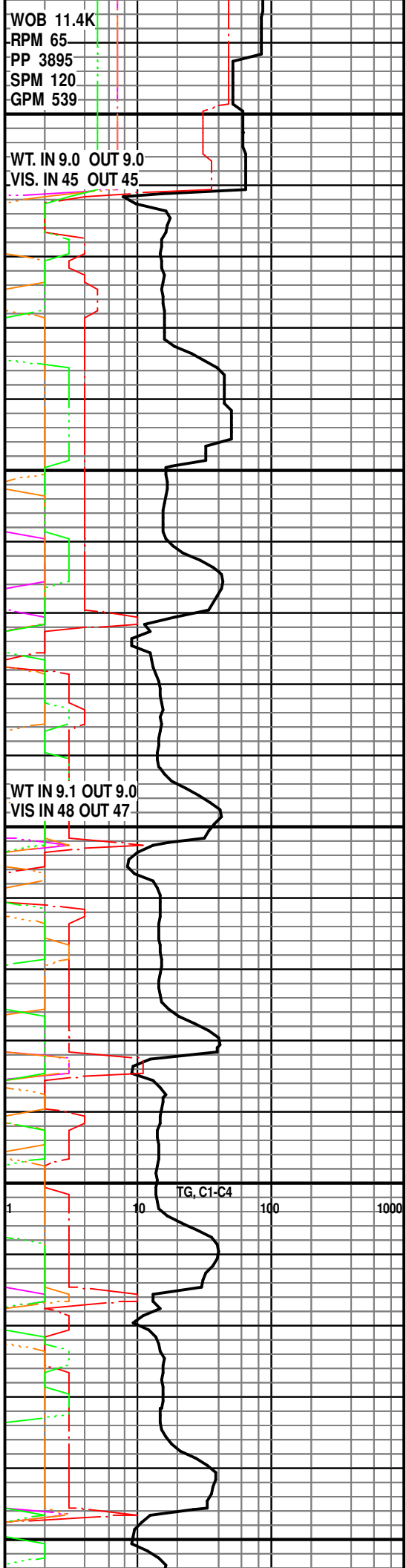
SH- DK GY- GY, GYBRN, SFT -
FRM, BLKY, SBWXY, NON TO
VERY SL CALC, RTHY, SM
SLTY. TR SLTST, GRY, MOD FM,
S&P, TITE

SH- DK GY- GY, GYBRN, SFT -
FRM, BLKY, SBWXY, NON TO
VERY SL CALC, RTHY, SM
SLTY. TR SLTST, GRY, MOD FM,
S&P, TITE

SH- DK GY- GY, GYBRN, SFT -
FRM, BLKY, SBWXY, NON TO
VERY SL CALC, RTHY, SM
SLTY. TR SLTST, GRY, MOD FM,
S&P, TITE

SH- DK GY- GY, GYBRN, SFT -
FRM, BLKY, SBWXY, NON TO
VERY SL CALC, RTHY, SM
SLTY. TR SLTST, GRY, MOD FM,
S&P, TITE SL TR WH BENT &
TAN CALCITE

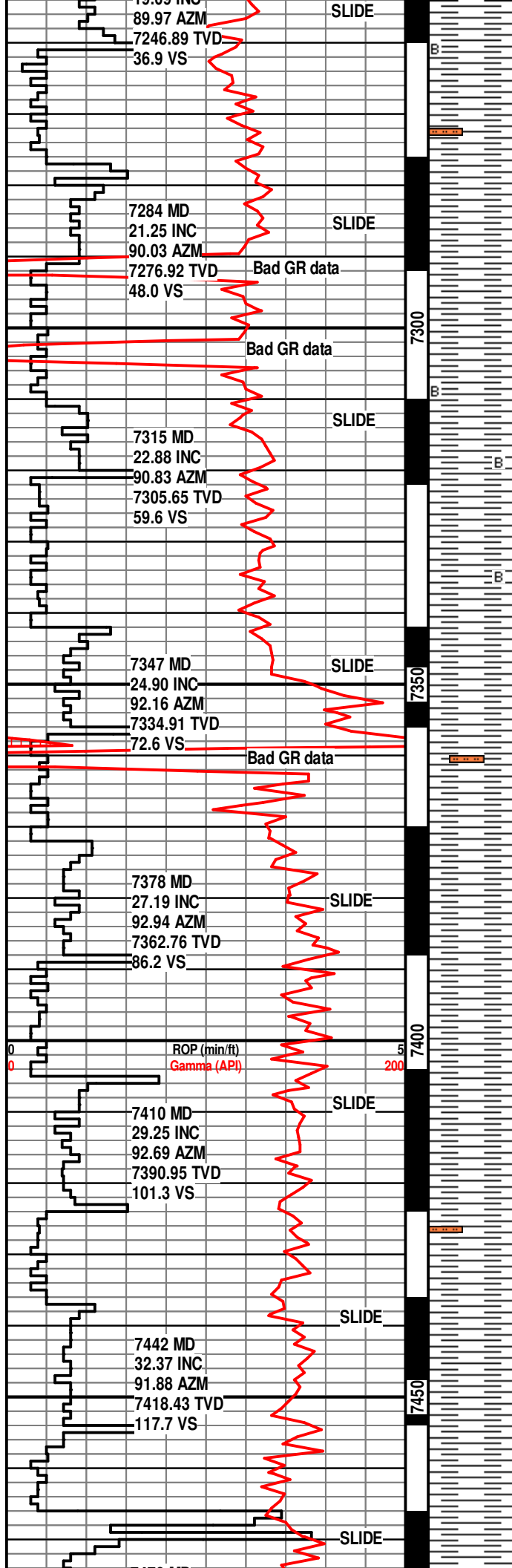
SH- DK GY- GY, GYBRN, SFT -
FRM, BLKY, SBWXY, NON TO
VERY SL CALC, RTHY, SM
SLTY. TR SLTST, GRY, MOD FM,
S&P, TITE SL TR WH BENT &
TAN CALCITE



WT. IN 9.0 OUT 9.0
VIS. IN 45 OUT 45

WT IN 9.1 OUT 9.0
VIS IN 48 OUT 47

TG, C1-C4



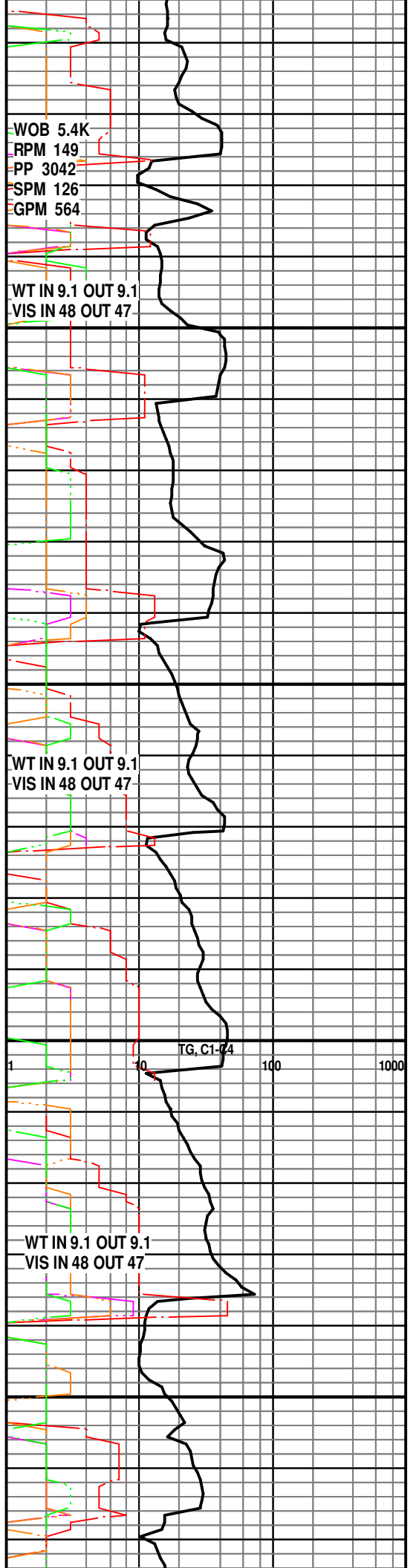
SH- DK GY- GY, GYBRN, SFT -
FRM, BLKY, SBWXY, NON TO
VERY SL CALC, RTHY, SM
SLTY. TR SLTST, GRY, MOD FM,
S&P, TITE

SH- DK GY- GY, GYBRN, SFT -
FRM, BLKY, SBWXY, NON TO
VERY SL CALC, RTHY, SM
SLTY. TR SLTST, GRY, MOD FM,
S&P, TITE INFLUX
WH-GRY-TAN BENT

SH- DK GY- GY, GYBRN, SFT -
FRM, BLKY, SBWXY, NON TO
VERY SL CALC, RTHY, SM
SLTY. TR SLTST, GRY, MOD FM,
S&P, TITE INFLUX
WH-GRY-TAN BENT

SH- DK GY- GY, GYBRN, SFT -
FRM, BLKY, SBWXY, NON TO
VERY SL CALC, RTHY, SM
SLTY. TR SLTST, GRY, MOD FM,
S&P, TITE

SH- DK GY- GY, GYBRN, SFT -
FRM, BLKY, SBWXY, NON TO



7473 MD
34.87 INC
91.11 AZM
7444.24 TVD
134.9 VS

7505 MD
37.60 INC
91.85 AZM
7470.05 TVD
153.8 VS

7537 MD
40.46 INC
92.79 AZM
7494.91 TVD
173.9 VS

7568 MD
43.51 INC
92.40 AZM
7517.95 TVD
194.6 VS

7600 MD ROP (min/ft)
46.41 INC Gamma (API)
91.50 AZM
7540.59 TVD
217.2 VS

7631 MD
49.32 INC
90.49 AZM
7561.39 TVD
240.2 VS

7663 MD
52.26 INC
90.66 AZM
7581.61 TVD
265.0 VS

SLIDE

SLIDE

SLIDE

SLIDE

SLIDE

SLIDE

SLIDE

7500

7550

7600

7650

FRM, BLKY, SBWXY, NON TO
VERY SL CALC, RTHY, SM
SLTY, TR SLTST

SH- DK GY- GY, GYBRN, SFT -
FRM, BLKY, SBWXY, NON TO
VERY SL CALC, RTHY, SM
SLTY, TR BENT

SH- DK GY- GY, GYBRN, SFT -
FRM, BLKY, SBWXY, NON TO
VERY SL CALC, RTHY, SM
SLTY, TR BENT

SH- DK GY- GY, GYBRN, SFT -
FRM, BLKY, SBWXY, SL CALC,
RTHY, SM SLTY, TR BENT

SH- DK GY- GY, GYBRN, SFT -
FRM, BLKY, SBWXY, SL CALC,
RTHY, SM SLTY, TR BENT

SH- DK GY- GY, BLKY- PLTY,
SBWXY, SFT - FRM, V CALC, V
CARB, TR BENT

SH- DK GY- GY, BLKY- PLTY,
SBWXY, SFT - FRM, V CALC, V
CARB, TR BENT

SH- DK GY- GY, BLKY- PLTY,
SBWXY, SFT - FRM, V CALC, V
CARB

SH- DK GY- GY, BLKY- PLTY,

SAMPLE TOP OF SHARON
SPGS. AT 7487 MD, 7455 TVD.

WT IN 9.1 OUT 9.1
VIS IN 48 OUT 47

SHARON SPRINGS HOT
GR, 7558 MD, 7510 TVD

WT IN 9.1 OUT 9.05
VIS IN 48 OUT 48

ISOTUBE 121 U

TG, C1-C4

ISOTUBE 243 U

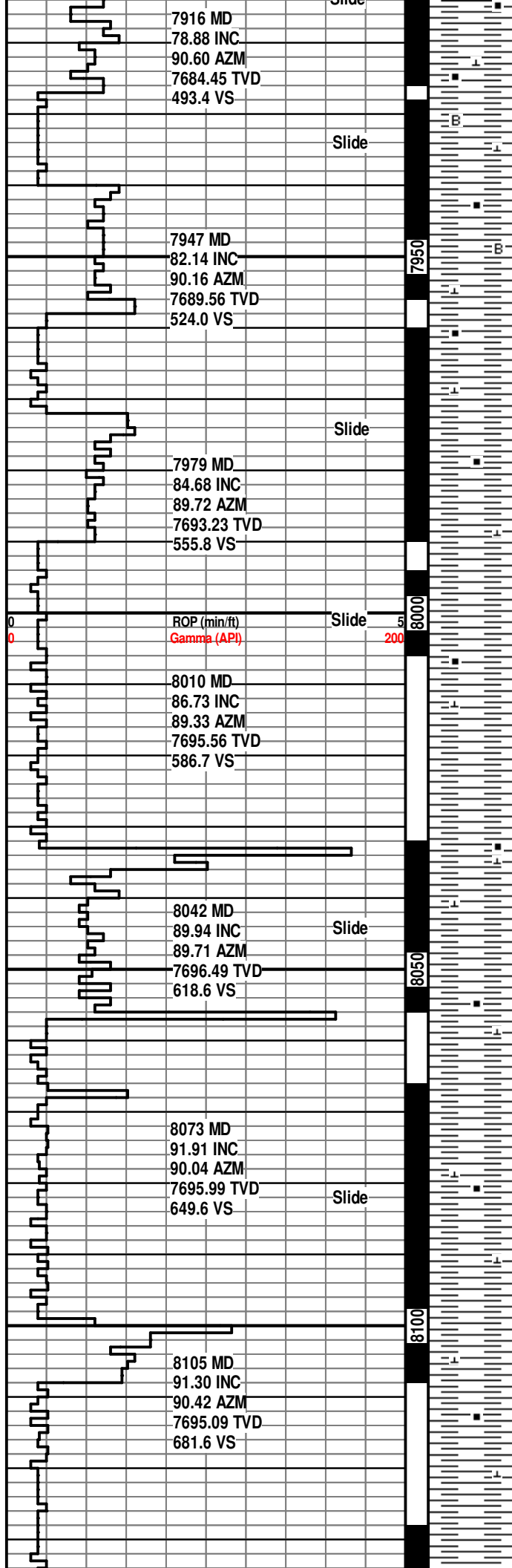
SAMPLE TOP OF NIOBRARA
AT 7620 MD, 7554 TVD.

ISOTUBE 445 U

WT IN 9.05 OUT 9.05
VIS IN 48 OUT 46

ISOTUBE 301 U

ISOTUBE 1049 U



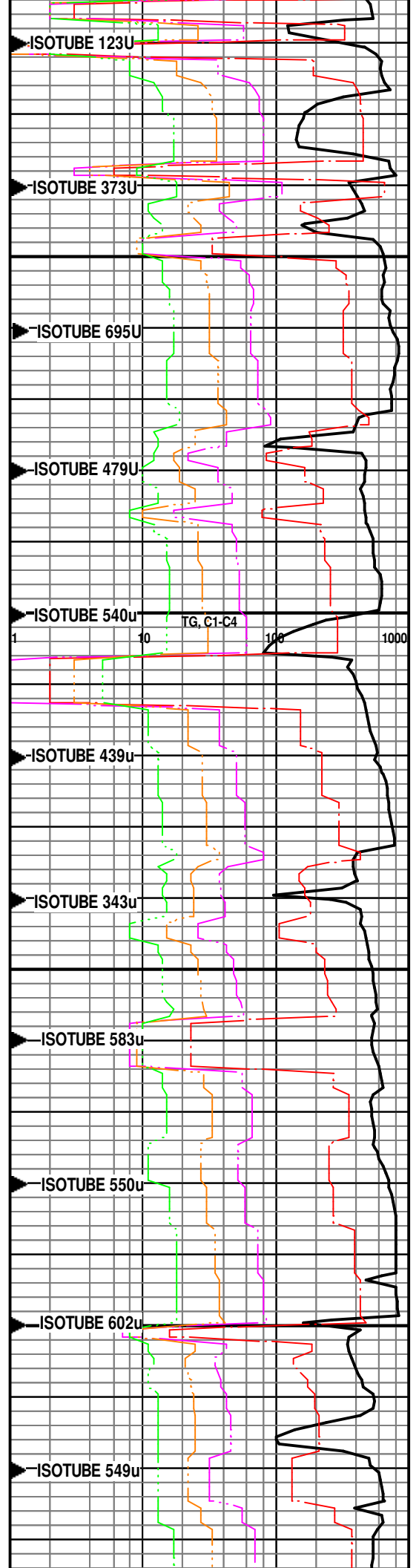
SH- DK GY- GY, BLKY- PLTY,
SBWXY, SFT - FRM, V CALC, V
CARB, MOD % GRY BENT

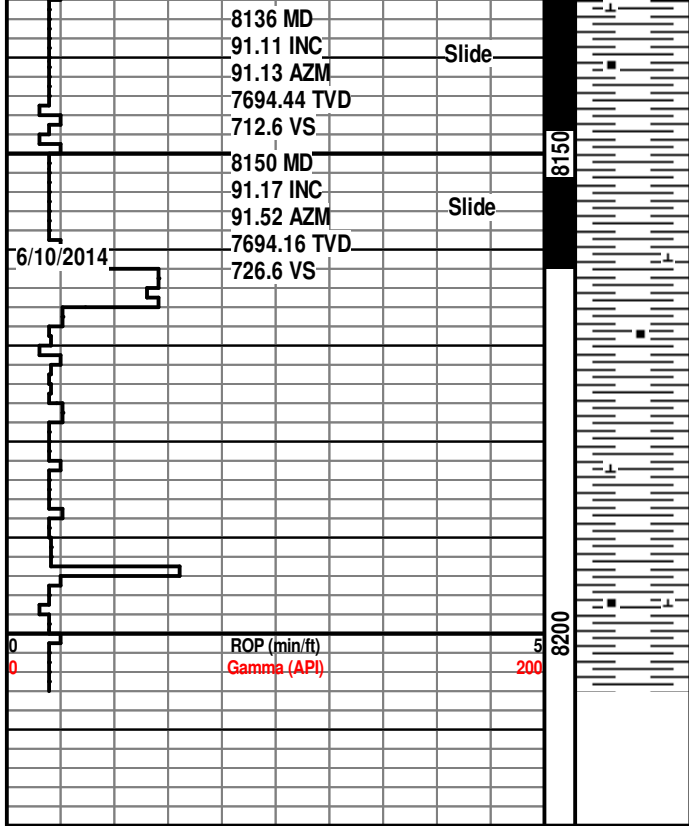
SH- DK GY- GY, BLKY- PLTY,
SBWXY, SFT - FRM, V CALC, V
CARB, MOD % GRY BENT

SH- DK GY- GY, BLKY- PLTY,
SBWXY, SFT - FRM, V CALC, V
CARB

SH- DK GY- GY, BLKY- PLTY,
SBWXY, SFT - FRM, V CALC, V
CARB

SH- DK GY- GY, BLKY- PLTY,
SBWXY, SFT - FRM, V CALC, V
CARB





SH- DK GY- GY, BLKY- PLTY,
SBWXY, SFT - FRM, V CALC, V
CARB

