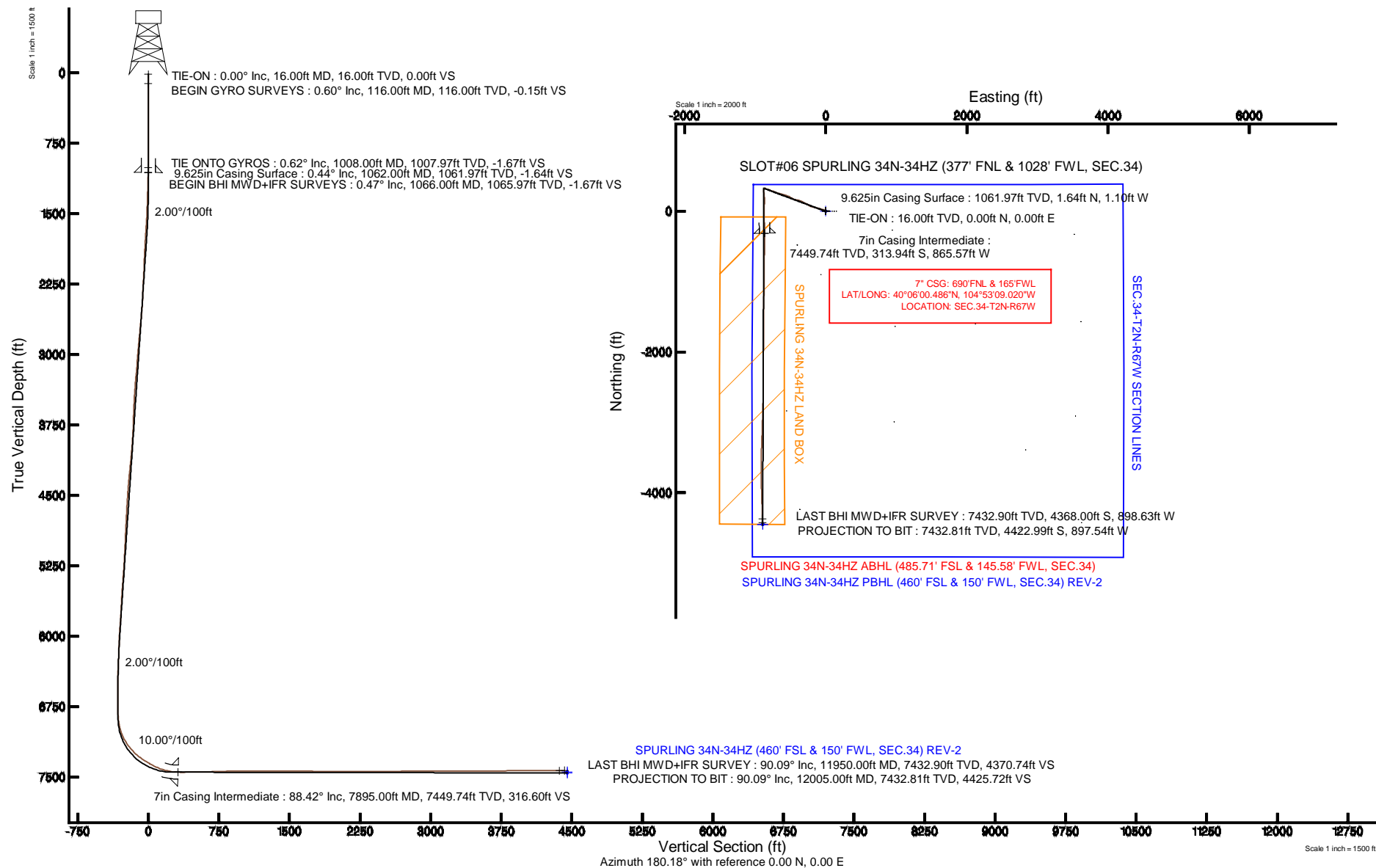


KERR-MCGEE OIL & GAS ONSHORE LP

Location:	COLORADO	Slot:	SLOT#06 SPURLING 34N-34HZ (377' FNL & 1028' FWL, SEC.34)
Field:	WELD COUNTY (KERR MCGEE)	Well:	SPURLING 34N-34HZ
Facility:	SEC.34-T2N-R67W	Wellbore:	SPURLING 34N-34HZ PWB

Plot reference wellpath is SPURLING 34N-34HZ (REV-B.0) PWP	
True vertical depths are referenced to XTREME 6 (16'RKB) (RKB)	Grid System: NAD83 / Lambert Colorado SP, Northern Zone (501), US feet
Measured depths are referenced to XTREME 6 (16'RKB) (RKB)	North Reference: True north
XTREME 6 (16'RKB) (RKB) to Mean Sea Level: 5029 feet	Scale: True distance
Mean Sea Level to Mud line (At Slot: SLOTH06 SPURLING 34N-34HZ (377' FNL & 1028' FWL, SEC. 34)): 0 feet	Depths are in feet
Coordinates are in feet referenced to Slot	Created by: robiale01 on 25/Jun/2014



Actual Wellpath Report

SPURLING 34N-34HZ AWP

Page 1 of 6

REFERENCE WELLPATH IDENTIFICATION

Operator	KERR-MCGEE OIL & GAS ONSHORE LP	Slot	SLOT#06 SPURLING 34N-34HZ (377' FNL & 1028' FWL, SEC.34)
Area	COLORADO	Well	SPURLING 34N-34HZ
Field	WELD COUNTY (KERR MCGEE)	Wellbore	SPURLING 34N-34HZ AWP
Facility	SEC.34-T2N-R67W		

REPORT SETUP INFORMATION

Projection System	NAD83 / Lambert Colorado SP, Northern Zone (501), US feet	Software System	WellArchitect® 4.0.0
North Reference	True	User	Robiale01
Scale	0.99996	Report Generated	25/Jun/2014 at 15:03
Convergence at slot	n/a	Database/Source file	WellArchitectDB/SPURLING_34N-34HZ_AWP.xml

WELLPATH LOCATION

	Local coordinates		Grid coordinates		Geographic coordinates	
	North[ft]	East[ft]	Easting[US ft]	Northing[US ft]	Latitude	Longitude
Slot Location	-0.40	-150.05	3172668.71	1280238.54	40°06'03.589"N	104°52'57.882"W
Facility Reference Pt			3172818.76	1280239.99	40°06'03.593"N	104°52'55.951"W
Field Reference Pt			3197771.84	1268891.29	40°04'09.600"N	104°47'36.000"W

WELLPATH DATUM

Calculation method	Minimum curvature	XTREME 6 (16'RKB) (RKB) to Facility Vertical Datum	5029.00ft
Horizontal Reference Pt	Slot	XTREME 6 (16'RKB) (RKB) to Mean Sea Level	5029.00ft
Vertical Reference Pt	XTREME 6 (16'RKB) (RKB)	XTREME 6 (16'RKB) (RKB) to Mud Line at Slot (SLOT#06 SPURLING 34N-34HZ (377' FNL & 1028' FWL, SEC.34))	5029.00ft
MD Reference Pt	XTREME 6 (16'RKB) (RKB)	Section Origin	N 0.00, E 0.00 ft
Field Vertical Reference	Mean Sea Level	Section Azimuth	191.47°

REFERENCE WELLPATH IDENTIFICATION

Operator	KERR-MCGEE OIL & GAS ONSHORE LP	Slot	SLOT#06 SPURLING 34N-34HZ (377' FNL & 1028' FWL, SEC.34)
Area	COLORADO	Well	SPURLING 34N-34HZ
Field	WELD COUNTY (KERR MCGEE)	Wellbore	SPURLING 34N-34HZ AWP
Facility	SEC.34-T2N-R67W		

WELLPATH DATA (111 stations) † = interpolated/extrapolated station

MD [ft]	Inclination [°]	Azimuth [°]	TVD [ft]	Vert Sect [ft]	North [ft]	East [ft]	Latitude	Longitude	DLS [°/100ft]	Comments
0.00†	0.000	286.410	0.00	0.00	0.00	0.00	40°06'03.589"N	104°52'57.882"W	0.00	
16.00	0.000	286.410	16.00	0.00	0.00	0.00	40°06'03.589"N	104°52'57.882"W	0.00	TIE-ON
116.00	0.600	286.410	116.00	-0.05	0.15	-0.50	40°06'03.590"N	104°52'57.888"W	0.60	BEGIN GYRO SURVEYS
216.00	0.460	246.560	215.99	0.14	0.14	-1.37	40°06'03.590"N	104°52'57.900"W	0.38	
316.00	0.490	153.280	315.99	0.71	-0.41	-1.55	40°06'03.585"N	104°52'57.902"W	0.69	
416.00	0.560	76.600	415.99	0.84	-0.67	-0.88	40°06'03.582"N	104°52'57.893"W	0.65	
516.00	0.700	22.950	515.98	0.03	0.00	-0.17	40°06'03.589"N	104°52'57.884"W	0.58	
616.00	0.470	277.780	615.98	-0.54	0.62	-0.34	40°06'03.595"N	104°52'57.886"W	0.94	
716.00	0.380	123.820	715.98	-0.39	0.49	-0.47	40°06'03.594"N	104°52'57.888"W	0.83	
816.00	0.470	30.360	815.98	-0.65	0.66	0.02	40°06'03.596"N	104°52'57.882"W	0.62	
916.00	0.680	329.230	915.97	-1.48	1.52	-0.08	40°06'03.604"N	104°52'57.883"W	0.61	
1008.00	0.620	230.100	1007.97	-1.49	1.67	-0.74	40°06'03.606"N	104°52'57.892"W	1.08	TIE-ON TO GYROS
1066.00	0.470	325.820	1065.97	-1.41	1.67	-1.12	40°06'03.605"N	104°52'57.896"W	1.40	BEGIN BHI MWD+IFR SURVEYS
1157.00	2.470	308.770	1156.93	-2.57	3.21	-2.85	40°06'03.621"N	104°52'57.919"W	2.23	
1246.00	4.010	306.340	1245.79	-4.76	6.25	-6.86	40°06'03.651"N	104°52'57.970"W	1.74	
1342.00	4.840	288.560	1341.51	-6.67	9.53	-13.40	40°06'03.683"N	104°52'58.054"W	1.66	
1433.00	6.150	289.330	1432.09	-7.81	12.36	-21.64	40°06'03.711"N	104°52'58.160"W	1.44	
1523.00	8.040	290.470	1521.39	-9.46	16.16	-32.09	40°06'03.749"N	104°52'58.295"W	2.11	
1613.00	9.510	290.360	1610.34	-11.59	20.95	-44.95	40°06'03.796"N	104°52'58.460"W	1.63	
1704.00	10.800	289.510	1699.91	-13.95	26.41	-60.04	40°06'03.850"N	104°52'58.655"W	1.43	
1795.00	12.240	288.650	1789.07	-16.34	32.35	-77.22	40°06'03.909"N	104°52'58.876"W	1.59	
1886.00	11.460	284.040	1878.14	-17.95	37.62	-95.13	40°06'03.961"N	104°52'59.106"W	1.35	
1977.00	11.130	282.750	1967.37	-18.56	41.76	-112.46	40°06'04.002"N	104°52'59.329"W	0.46	
2067.00	10.860	281.950	2055.72	-18.82	45.43	-129.23	40°06'04.038"N	104°52'59.545"W	0.34	
2158.00	10.430	282.040	2145.16	-18.97	48.92	-145.67	40°06'04.072"N	104°52'59.757"W	0.47	
2249.00	11.250	286.710	2234.53	-19.87	53.19	-162.23	40°06'04.115"N	104°52'59.970"W	1.32	
2431.00	9.860	284.530	2413.45	-22.32	62.21	-194.32	40°06'04.204"N	104°53'00.383"W	0.79	
2522.00	10.040	297.370	2503.09	-24.91	67.81	-208.91	40°06'04.259"N	104°53'00.570"W	2.44	
2613.00	10.180	298.190	2592.68	-29.39	75.25	-223.04	40°06'04.333"N	104°53'00.752"W	0.22	
2704.00	11.750	298.090	2682.01	-34.36	83.42	-238.30	40°06'04.413"N	104°53'00.949"W	1.73	
2885.00	11.690	296.650	2859.24	-44.43	100.32	-270.95	40°06'04.580"N	104°53'01.369"W	0.16	
3067.00	10.590	294.790	3037.81	-53.11	115.60	-302.62	40°06'04.731"N	104°53'01.776"W	0.64	
3238.00	11.310	296.480	3205.70	-61.07	129.67	-331.89	40°06'04.870"N	104°53'02.153"W	0.46	
3408.00	11.630	292.470	3372.30	-68.66	143.65	-362.65	40°06'05.009"N	104°53'02.549"W	0.51	
3579.00	9.120	285.760	3540.50	-72.96	153.92	-391.62	40°06'05.110"N	104°53'02.922"W	1.63	
3749.00	11.280	277.770	3707.81	-72.90	159.83	-421.07	40°06'05.168"N	104°53'03.301"W	1.52	
3920.00	9.700	292.270	3875.98	-74.52	167.55	-450.98	40°06'05.245"N	104°53'03.685"W	1.79	
4090.00	10.920	297.050	4043.23	-81.53	180.30	-478.57	40°06'05.371"N	104°53'04.041"W	0.88	
4259.00	11.180	301.400	4209.10	-91.41	196.12	-506.81	40°06'05.527"N	104°53'04.404"W	0.52	
4512.00	11.920	291.110	4457.00	-104.15	218.31	-552.13	40°06'05.746"N	104°53'04.987"W	0.86	
4682.00	11.330	285.710	4623.52	-108.32	229.15	-584.58	40°06'05.853"N	104°53'05.405"W	0.73	
4853.00	10.760	286.230	4791.35	-110.89	238.16	-616.08	40°06'05.942"N	104°53'05.810"W	0.34	
5021.00	9.520	284.660	4956.73	-112.96	246.06	-644.58	40°06'06.021"N	104°53'06.177"W	0.76	
5277.00	11.070	287.080	5208.60	-116.54	258.64	-688.56	40°06'06.145"N	104°53'06.743"W	0.63	
5447.00	11.420	293.110	5375.34	-121.53	270.04	-719.64	40°06'06.257"N	104°53'07.143"W	0.72	

REFERENCE WELLPATH IDENTIFICATION

Operator	KERR-MCGEE OIL & GAS ONSHORE LP	Slot	SLOT#06 SPURLING 34N-34HZ (377' FNL & 1028' FWL, SEC.34)
Area	COLORADO	Well	SPURLING 34N-34HZ
Field	WELD COUNTY (KERR MCGEE)	Wellbore	SPURLING 34N-34HZ AWB
Facility	SEC.34-T2N-R67W		

WELLPATH DATA (111 stations) † = interpolated/extrapolated station

MD [ft]	Inclination [°]	Azimuth [°]	TVD [ft]	Vert Sect [ft]	North [ft]	East [ft]	Latitude	Longitude	DLS [°/100ft]	Comments
5618.00	10.610	288.850	5543.19	-126.97	281.77	-750.11	40°06'06.373"N	104°53'07.535"W	0.67	
5789.00	10.610	286.100	5711.27	-130.26	291.22	-780.13	40°06'06.467"N	104°53'07.921"W	0.30	
5960.00	10.540	293.520	5879.37	-134.80	301.83	-809.60	40°06'06.572"N	104°53'08.301"W	0.80	
6045.00	9.280	290.920	5963.10	-137.54	307.38	-823.13	40°06'06.626"N	104°53'08.475"W	1.57	
6130.00	8.360	287.050	6047.10	-139.27	311.64	-835.44	40°06'06.669"N	104°53'08.633"W	1.29	
6216.00	7.660	288.780	6132.26	-140.61	315.32	-846.84	40°06'06.705"N	104°53'08.780"W	0.86	
6301.00	6.340	286.020	6216.62	-141.70	318.44	-856.72	40°06'06.736"N	104°53'08.907"W	1.60	
6386.00	5.010	299.170	6301.21	-143.20	321.54	-864.47	40°06'06.766"N	104°53'09.007"W	2.18	
6471.00	2.820	309.800	6386.01	-145.32	324.69	-869.32	40°06'06.797"N	104°53'09.069"W	2.70	
6556.00	1.460	335.100	6470.95	-147.19	327.01	-871.38	40°06'06.820"N	104°53'09.096"W	1.91	
6642.00	1.260	256.020	6556.93	-147.66	327.78	-872.76	40°06'06.828"N	104°53'09.113"W	2.02	
6727.00	0.760	222.430	6641.92	-146.78	327.13	-874.04	40°06'06.822"N	104°53'09.130"W	0.89	
6812.00	1.150	248.090	6726.90	-145.82	326.40	-875.22	40°06'06.814"N	104°53'09.145"W	0.67	
6897.00	0.890	233.730	6811.89	-144.87	325.69	-876.54	40°06'06.807"N	104°53'09.162"W	0.43	
6940.00	4.760	174.750	6854.84	-142.91	323.72	-876.65	40°06'06.788"N	104°53'09.163"W	10.16	
6983.00	5.870	184.850	6897.65	-139.02	319.75	-876.67	40°06'06.749"N	104°53'09.164"W	3.37	
7025.00	9.840	184.430	6939.25	-133.32	314.03	-877.13	40°06'06.692"N	104°53'09.170"W	9.45	
7068.00	14.720	184.200	6981.25	-124.25	304.91	-877.81	40°06'06.602"N	104°53'09.178"W	11.35	
7110.00	18.560	180.820	7021.49	-112.38	292.90	-878.30	40°06'06.483"N	104°53'09.185"W	9.43	
7153.00	23.100	176.230	7061.67	-97.51	277.63	-877.84	40°06'06.332"N	104°53'09.179"W	11.21	
7195.00	28.620	173.420	7099.45	-79.98	259.40	-876.15	40°06'06.152"N	104°53'09.157"W	13.46	
7238.00	34.010	174.470	7136.17	-58.67	237.19	-873.81	40°06'05.933"N	104°53'09.127"W	12.60	
7280.00	37.730	175.330	7170.20	-35.09	212.68	-871.63	40°06'05.691"N	104°53'09.099"W	8.94	
7323.00	40.080	177.500	7203.66	-9.01	185.73	-869.95	40°06'05.424"N	104°53'09.077"W	6.32	
7366.00	43.940	179.990	7235.61	19.06	156.97	-869.34	40°06'05.140"N	104°53'09.069"W	9.78	
7408.00	48.780	181.400	7264.59	48.91	126.59	-869.73	40°06'04.840"N	104°53'09.074"W	11.78	
7451.00	52.930	180.970	7291.72	81.71	93.25	-870.41	40°06'04.510"N	104°53'09.083"W	9.68	
7493.00	55.860	180.570	7316.17	115.26	59.11	-870.87	40°06'04.173"N	104°53'09.089"W	7.02	
7536.00	58.440	181.010	7339.50	150.76	22.99	-871.37	40°06'03.816"N	104°53'09.095"W	6.06	
7579.00	61.020	180.560	7361.17	187.25	-14.14	-871.88	40°06'03.449"N	104°53'09.102"W	6.07	
7621.00	63.610	180.500	7380.68	223.76	-51.32	-872.22	40°06'03.082"N	104°53'09.106"W	6.17	
7664.00	66.440	179.270	7398.84	261.94	-90.30	-872.14	40°06'02.697"N	104°53'09.105"W	7.07	
7707.00	69.190	178.770	7415.07	300.82	-130.11	-871.46	40°06'02.303"N	104°53'09.096"W	6.49	
7749.00	74.380	177.660	7428.20	339.63	-169.97	-870.21	40°06'01.909"N	104°53'09.080"W	12.61	
7792.00	78.930	177.990	7438.12	380.28	-211.76	-868.62	40°06'01.496"N	104°53'09.060"W	10.61	
7835.00	82.640	178.030	7445.00	421.55	-254.18	-867.15	40°06'01.077"N	104°53'09.041"W	8.63	
7856.00	84.540	177.890	7447.35	441.84	-275.03	-866.40	40°06'00.871"N	104°53'09.031"W	9.07	
7895.00†	88.424	179.635	7449.74	479.81	-313.94	-865.57	40°06'00.486"N	104°53'09.020"W	10.92	7" CASING POINT
7907.00	89.620	180.170	7449.95	491.56	-325.94	-865.54	40°06'00.368"N	104°53'09.020"W	10.92	
7929.00	89.960	180.580	7450.03	513.15	-347.94	-865.69	40°06'00.150"N	104°53'09.022"W	2.42	
8014.00	90.460	180.800	7449.72	596.65	-432.93	-866.71	40°05'59.311"N	104°53'09.035"W	0.64	
8185.00	91.600	181.300	7446.64	764.80	-603.87	-869.85	40°05'57.621"N	104°53'09.075"W	0.73	
8356.00	91.810	179.620	7441.55	932.57	-774.78	-871.22	40°05'55.932"N	104°53'09.093"W	0.99	
8526.00	90.330	181.180	7438.38	1099.37	-944.74	-872.40	40°05'54.253"N	104°53'09.108"W	1.26	
8696.00	90.180	180.850	7437.62	1266.54	-1114.71	-875.42	40°05'52.573"N	104°53'09.147"W	0.21	

REFERENCE WELLPATH IDENTIFICATION

Operator	KERR-MCGEE OIL & GAS ONSHORE LP	Slot	SLOT#06 SPURLING 34N-34HZ (377' FNL & 1028' FWL, SEC.34)
Area	COLORADO	Well	SPURLING 34N-34HZ
Field	WELD COUNTY (KERR MCGEE)	Wellbore	SPURLING 34N-34HZ AWP
Facility	SEC.34-T2N-R67W		

WELLPATH DATA (111 stations)

MD [ft]	Inclination [°]	Azimuth [°]	TVD [ft]	Vert Sect [ft]	North [ft]	East [ft]	Latitude	Longitude	DLS [°/100ft]	Comments
8867.00	89.750	181.340	7437.73	1434.74	-1285.68	-878.68	40°05'50.884"N	104°53'09.189"W	0.38	
9036.00	89.810	180.000	7438.38	1600.74	-1454.66	-880.66	40°05'49.214"N	104°53'09.214"W	0.79	
9207.00	89.780	180.550	7438.99	1768.49	-1625.66	-881.48	40°05'47.524"N	104°53'09.225"W	0.32	
9377.00	89.070	179.990	7440.69	1935.24	-1795.65	-882.28	40°05'45.844"N	104°53'09.235"W	0.53	
9547.00	90.800	180.800	7440.89	2102.07	-1965.63	-883.45	40°05'44.164"N	104°53'09.250"W	1.12	
9718.00	89.290	179.750	7440.75	2269.80	-2136.62	-884.27	40°05'42.474"N	104°53'09.260"W	1.08	
9888.00	90.180	180.210	7441.54	2436.39	-2306.62	-884.22	40°05'40.794"N	104°53'09.260"W	0.59	
10057.00	90.060	180.670	7441.18	2602.27	-2475.61	-885.51	40°05'39.124"N	104°53'09.276"W	0.28	
10226.00	90.580	181.250	7440.24	2768.43	-2644.59	-888.34	40°05'37.455"N	104°53'09.313"W	0.46	
10395.00	89.810	181.560	7439.66	2934.83	-2813.53	-892.49	40°05'35.785"N	104°53'09.366"W	0.49	
10565.00	90.120	181.880	7439.77	3102.37	-2983.46	-897.59	40°05'34.106"N	104°53'09.431"W	0.26	
10735.00	90.030	181.760	7439.55	3269.96	-3153.37	-902.99	40°05'32.427"N	104°53'09.501"W	0.09	
10905.00	90.270	182.140	7439.10	3437.62	-3323.27	-908.77	40°05'30.748"N	104°53'09.575"W	0.26	
11076.00	90.090	180.490	7438.56	3605.93	-3494.22	-912.70	40°05'29.058"N	104°53'09.626"W	0.97	
11246.00	90.730	179.410	7437.35	3772.50	-3664.21	-912.55	40°05'27.379"N	104°53'09.624"W	0.74	
11416.00	91.260	179.890	7434.40	3938.87	-3834.18	-911.51	40°05'25.699"N	104°53'09.610"W	0.42	
11587.00	89.900	178.020	7432.66	4105.79	-4005.13	-908.39	40°05'24.009"N	104°53'09.570"W	1.35	
11757.00	89.930	178.510	7432.92	4271.29	-4175.05	-903.25	40°05'22.330"N	104°53'09.504"W	0.29	
11927.00	90.060	178.710	7432.93	4437.02	-4345.00	-899.12	40°05'20.651"N	104°53'09.450"W	0.14	
11950.00	90.090	178.860	7432.90	4459.46	-4368.00	-898.63	40°05'20.424"N	104°53'09.444"W	0.67	LAST BHI MWD+IFR SURVEY
12005.00	90.090	178.860	7432.81	4513.14	-4422.99	-897.54	40°05'19.880"N	104°53'09.430"W	0.00	PROJECTION TO BIT

HOLE & CASING SECTIONS - Ref Wellbore: SPURLING 34N-34HZ AWP Ref Wellpath: SPURLING 34N-34HZ AWP

String/Diameter	Start MD [ft]	End MD [ft]	Interval [ft]	Start TVD [ft]	End TVD [ft]	Start N/S [ft]	Start E/W [ft]	End N/S [ft]	End E/W [ft]
13.5in Open Hole	16.00	1062.00	1046.00	16.00	1061.97	0.00	0.00	1.64	-1.10
9.625in Casing Surface	16.00	1062.00	1046.00	16.00	1061.97	0.00	0.00	1.64	-1.10
8.75in Open Hole	1062.00	7905.00	6843.00	1061.97	7449.93	1.64	-1.10	-323.94	-865.54
7in Casing Intermediate	16.00	7895.00	7879.00	16.00	7449.74	0.00	0.00	-313.94	-865.57
6.125in Open Hole	7905.00	12005.00	4100.00	7449.93	7432.81	-323.94	-865.54	-4422.99	-897.54

Actual Wellpath Report

SPURLING 34N-34HZ AWP

Page 5 of 6

REFERENCE WELLPATH IDENTIFICATION

Operator	KERR-MCGEE OIL & GAS ONSHORE LP	Slot	SLOT#06 SPURLING 34N-34HZ (377' FNL & 1028' FWL, SEC.34)
Area	COLORADO	Well	SPURLING 34N-34HZ
Field	WELD COUNTY (KERR MCGEE)	Wellbore	SPURLING 34N-34HZ AWB
Facility	SEC.34-T2N-R67W		

TARGETS

Name	MD [ft]	TVD [ft]	North [ft]	East [ft]	Grid East [US ft]	Grid North [US ft]	Latitude	Longitude	Shape
SEC.34-T2N-R67W SECTION LINES		5029.00	0.41	149.98	3172818.68	1280239.99	40°06'03.593"N	104°52'55.952"W	polygon
SPURLING 34N-34HZ (460' FSL & 150' FWL, SEC.34) REV-1		7448.00	-4448.71	-893.12	3171806.62	1275783.91	40°05'19.626"N	104°53'09.373"W	point
SPURLING 34N-34HZ (460' FSL & 150' FWL, SEC.34) REV-2		7458.00	-4448.71	-893.12	3171806.62	1275783.91	40°05'19.626"N	104°53'09.373"W	point
SPURLING 34N-34HZ LAND BOX		7500.00	0.00	0.00	3172668.71	1280238.54	40°06'03.589"N	104°52'57.882"W	polygon

WELLPATH COMPOSITION - Ref Wellbore: SPURLING 34N-34HZ AWB Ref Wellpath: SPURLING 34N-34HZ AWP

Start MD [ft]	End MD [ft]	Positional Uncertainty Model	Log Name/Comment	Wellbore
16.00	1008.00	Generic gyro - continuous (Standard)	MS GYRODATA SURVEYS <116-1008>	SPURLING 34N-34HZ AWB
1008.00	7907.00	NaviTrak (MAGCORR,IFR)	BHI NAVITRAK MWD+IFR 8 3/4" <1066-7907>	SPURLING 34N-34HZ AWB
7907.00	11950.00	NaviTrak (MAGCORR,IFR)	BHI NAVITRAK MWD+IFR 6 1/8" <7929-11950>	SPURLING 34N-34HZ AWB
11950.00	12005.00	Blind Drilling (std)	Projection to bit	SPURLING 34N-34HZ AWB

Actual Wellpath Report

SPURLING 34N-34HZ AWP

Page 6 of 6

REFERENCE WELLPATH IDENTIFICATION			
Operator	KERR-MCGEE OIL & GAS ONSHORE LP	Slot	SLOT#06 SPURLING 34N-34HZ (377' FNL & 1028' FWL, SEC.34)
Area	COLORADO	Well	SPURLING 34N-34HZ
Field	WELD COUNTY (KERR MCGEE)	Wellbore	SPURLING 34N-34HZ AWB
Facility	SEC.34-T2N-R67W		

WELLPATH COMMENTS				
MD [ft]	Inclination [°]	Azimuth [°]	TVD [ft]	Comment
16.00	0.000	286.410	16.00	TIE-ON
116.00	0.600	286.410	116.00	BEGIN GYRO SURVEYS
1008.00	0.620	230.100	1007.97	TIE ONTO GYROS
1066.00	0.470	325.820	1065.97	BEGIN BHI MWD+IFR SURVEYS
7895.00	88.424	179.635	7449.74	7" CASING POINT
11950.00	90.090	178.860	7432.90	LAST BHI MWD+IFR SURVEY
12005.00	90.090	178.860	7432.81	PROJECTION TO BIT