

BILL BARRETT CORP

WELD COUNTY, COLORADO

Will 6-62-15_22 NENW Pad

WILL 6-62-15-0362CDH

Wellbore #1

Plan: Design #1

Standard Planning Report

15 July, 2014



Bill Barrett Corporation

COMPANY DETAILS: BILL BARRETT CORP

Calculation Method: Minimum Curvature
Error System: ISCWSA
Scan Method: Closest Approach 3D
Error Surface: Elliptical Conic
Warning Method: Error Ratio

REFERENCE INFORMATION

Co-ordinate (N/E) Reference: Well WILL 6-62-15-0362CDH, True North
Vertical (TVD) Reference: KB @ 4772.0ft (Original Well Elev)
Section (VS) Reference: Slot - (0.0N, 0.0E)
Measured Depth Reference: KB @ 4772.0ft (Original Well Elev)
Calculation Method: Minimum Curvature

WELL DETAILS: WILL 6-62-15-0362CDH

+N/-S +E/-W Northing Easting Latitude Longitude
0.0 0.0 1424895.73 3331015.2 40° 29' 37.111 N 104° 18' 35.280 W

SECTION DETAILS

Sec	MD	Inc	Azi	TVD	+N/-S	+E/-W	DLeg	TFace	VSec	Target
1	0.0	0.00	0.00	0.0	0.0	0.0	0.00	0.00	0.0	
2	1000.0	0.00	0.00	1000.0	0.0	0.0	0.00	0.00	0.0	
3	1171.5	3.43	349.38	1171.4	5.0	-0.9	2.00	349.38	-5.0	
4	5754.4	3.43	349.38	5746.1	274.6	-51.5	0.00	0.00	-274.1	
5	5926.0	0.00	180.18	5917.5	279.6	-52.4	2.00	180.00	-279.1	
6	6176.0	0.00	180.18	6167.5	279.6	-52.4	0.00	180.18	-279.1	
7	6928.5	90.30	180.18	6645.0	-200.4	-54.0	12.00	180.18	200.8	W 15-0362CDH2 LP
8	16446.1	90.30	180.18	6595.0	-9717.8	-84.3	0.00	0.00	9718.2	W 15-0362CDH2 PBHL

PROJECT DETAILS: WELD COUNTY, COLORADO

Geodetic System: US State Plane 1983
Datum: North American Datum 1983
Ellipsoid: GRS 1980
Zone: Colorado Northern Zone

FORMATION TOP DETAILS

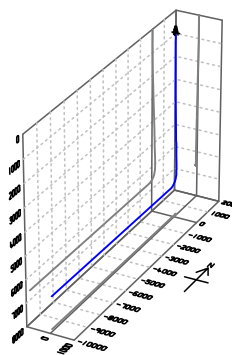
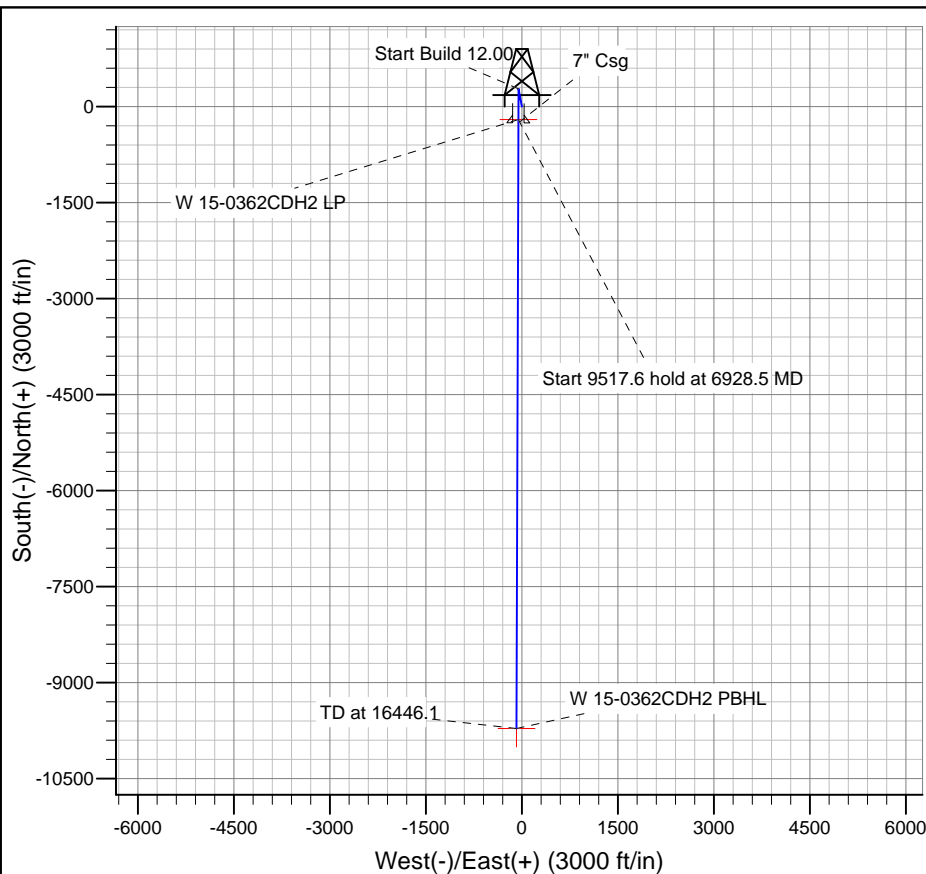
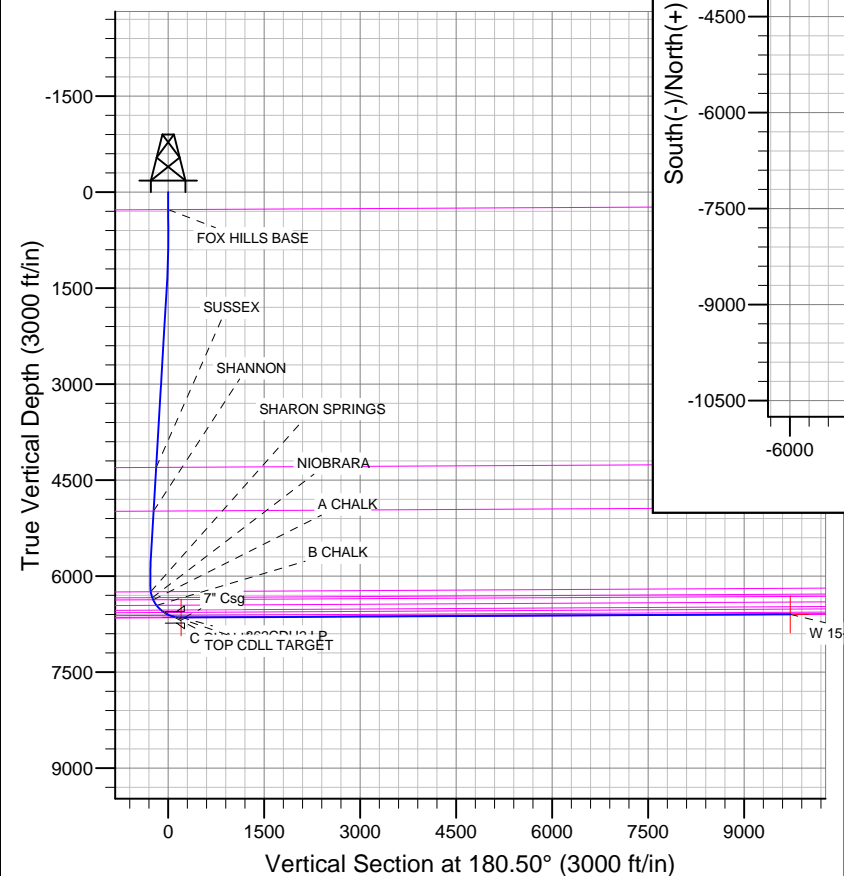
TVDPath	MDPath	Formation
272.0	272.0	BASE CDLL TARGET
4301.0	4306.7	FOX HILLS BASE
4981.2	4988.1	SUSSEX
6241.4	6250.1	SHARON SPRINGS
6334.3	6346.3	NIOBRARA
6369.2	6384.2	A CHALK
6456.0	6485.6	B CHALK
6528.6	6585.4	C CHALK
6567.3	6649.8	C MARL
6613.9	6752.5	FT HAYS
6638.4	6846.3	TOP CDLL TARGET

CASING DETAILS

TVD	MD	Name	Size
6644.7	6982.5	7" Csg	7

WELLBORE TARGET DETAILS

Name	TVD	+N/-S	+E/-W	Shape
W 15-0362CDH2 PBHL	6595.0	-9717.8	-84.3	Point
W 15-0362CDH2 LP	6645.0	-200.4	-54.0	Point



Azimuths to True North
Magnetic North: 8.21°

Magnetic Field
Strength: 52902.8snT
Dip Angle: 67.09°
Date: 7/15/2014
Model: IGRF2010

Bill Barrett Corp

Planning Report

Database:	Compass	Local Co-ordinate Reference:	Well WILL 6-62-15-0362CDH
Company:	BILL BARRETT CORP	TVD Reference:	KB @ 4772.0ft (Original Well Elev)
Project:	WELD COUNTY, COLORADO	MD Reference:	KB @ 4772.0ft (Original Well Elev)
Site:	Will 6-62-15_22 NENW Pad	North Reference:	True
Well:	WILL 6-62-15-0362CDH	Survey Calculation Method:	Minimum Curvature
Wellbore:	Wellbore #1		
Design:	Design #1		

Project	WELD COUNTY, COLORADO		
Map System:	US State Plane 1983	System Datum:	Mean Sea Level
Geo Datum:	North American Datum 1983		
Map Zone:	Colorado Northern Zone		

Site		Will 6-62-15_22 NENW Pad			
Site Position:		Northing:	1,424,895.52 ft	Latitude:	40° 29' 37.111 N
From:	Lat/Long	Easting:	3,330,999.60 ft	Longitude:	104° 18' 35.482 W
Position Uncertainty:	0.0 ft	Slot Radius:	"	Grid Convergence:	0.77 °

Well	WILL 6-62-15-0362CDH					
Well Position	+N-S	0.0 ft	Northing:	1,424,895.73 ft	Latitude:	40° 29' 37.111 N
	+E-W	15.6 ft	Easting:	3,331,015.21 ft	Longitude:	104° 18' 35.280 W
Position Uncertainty		0.0 ft	Wellhead Elevation:	ft	Ground Level:	4,750.0ft

Wellbore	Wellbore #1				
Magnetics	Model Name	Sample Date	Declination (°)	Dip Angle (°)	Field Strength (nT)
	IGRF2010	7/15/2014	8.21	67.09	52,903

Design	Design #1				
Audit Notes:					
Version:	Phase:	PLAN		Tie On Depth:	0.0
Vertical Section:	Depth From (TVD) (ft)	+N/-S (ft)	+E/-W (ft)	Direction (°)	
	0.0	0.0	0.0	180.50	

Plan Sections										
Measured Depth (ft)	Inclination (°)	Azimuth (°)	Vertical Depth (ft)	+N/-S (ft)	+E/-W (ft)	Dogleg Rate (°/100ft)	Build Rate (°/100ft)	Turn Rate (°/100ft)	TFO (°)	Target
0.0	0.00	0.00	0.0	0.0	0.0	0.00	0.00	0.00	0.00	
1,000.0	0.00	0.00	1,000.0	0.0	0.0	0.00	0.00	0.00	0.00	
1,171.5	3.43	349.38	1,171.4	5.0	-0.9	2.00	2.00	0.00	349.38	
5,754.4	3.43	349.38	5,746.1	274.6	-51.5	0.00	0.00	0.00	0.00	
5,926.0	0.00	180.18	5,917.5	279.6	-52.4	2.00	-2.00	0.00	180.00	
6,176.0	0.00	180.18	6,167.5	279.6	-52.4	0.00	0.00	0.00	180.18	
6,928.5	90.30	180.18	6,645.0	-200.4	-54.0	12.00	12.00	0.00	180.18	W 15-0362CDH2 LI
16,446.1	90.30	180.18	6,595.0	-9,717.8	-84.3	0.00	0.00	0.00	0.00	W 15-0362CDH2 P

Bill Barrett Corp

Planning Report

Database:	Compass	Local Co-ordinate Reference:	Well WILL 6-62-15-0362CDH
Company:	BILL BARRETT CORP	TVD Reference:	KB @ 4772.0ft (Original Well Elev)
Project:	WELD COUNTY, COLORADO	MD Reference:	KB @ 4772.0ft (Original Well Elev)
Site:	Will 6-62-15_22 NENW Pad	North Reference:	True
Well:	WILL 6-62-15-0362CDH	Survey Calculation Method:	Minimum Curvature
Wellbore:	Wellbore #1		
Design:	Design #1		

Planned Survey									
Measured Depth (ft)	Inclination (°)	Azimuth (°)	Vertical Depth (ft)	+N/-S (ft)	+E/-W (ft)	Vertical Section (ft)	Dogleg Rate (°/100ft)	Build Rate (°/100ft)	Turn Rate (°/100ft)
0.0	0.00	0.00	0.0	0.0	0.0	0.0	0.00	0.00	0.00
100.0	0.00	0.00	100.0	0.0	0.0	0.0	0.00	0.00	0.00
200.0	0.00	0.00	200.0	0.0	0.0	0.0	0.00	0.00	0.00
272.0	0.00	0.00	272.0	0.0	0.0	0.0	0.00	0.00	0.00
FOX HILLS BASE									
300.0	0.00	0.00	300.0	0.0	0.0	0.0	0.00	0.00	0.00
400.0	0.00	0.00	400.0	0.0	0.0	0.0	0.00	0.00	0.00
500.0	0.00	0.00	500.0	0.0	0.0	0.0	0.00	0.00	0.00
600.0	0.00	0.00	600.0	0.0	0.0	0.0	0.00	0.00	0.00
700.0	0.00	0.00	700.0	0.0	0.0	0.0	0.00	0.00	0.00
800.0	0.00	0.00	800.0	0.0	0.0	0.0	0.00	0.00	0.00
900.0	0.00	0.00	900.0	0.0	0.0	0.0	0.00	0.00	0.00
1,000.0	0.00	0.00	1,000.0	0.0	0.0	0.0	0.00	0.00	0.00
1,100.0	2.00	349.38	1,100.0	1.7	-0.3	-1.7	2.00	2.00	0.00
1,171.5	3.43	349.38	1,171.4	5.0	-0.9	-5.0	2.00	2.00	0.00
1,200.0	3.43	349.38	1,199.8	6.7	-1.3	-6.7	0.00	0.00	0.00
1,300.0	3.43	349.38	1,299.7	12.6	-2.4	-12.6	0.00	0.00	0.00
1,400.0	3.43	349.38	1,399.5	18.5	-3.5	-18.5	0.00	0.00	0.00
1,500.0	3.43	349.38	1,499.3	24.4	-4.6	-24.3	0.00	0.00	0.00
1,600.0	3.43	349.38	1,599.1	30.2	-5.7	-30.2	0.00	0.00	0.00
1,700.0	3.43	349.38	1,699.0	36.1	-6.8	-36.1	0.00	0.00	0.00
1,800.0	3.43	349.38	1,798.8	42.0	-7.9	-41.9	0.00	0.00	0.00
1,900.0	3.43	349.38	1,898.6	47.9	-9.0	-47.8	0.00	0.00	0.00
2,000.0	3.43	349.38	1,998.4	53.8	-10.1	-53.7	0.00	0.00	0.00
2,100.0	3.43	349.38	2,098.2	59.6	-11.2	-59.5	0.00	0.00	0.00
2,200.0	3.43	349.38	2,198.1	65.5	-12.3	-65.4	0.00	0.00	0.00
2,300.0	3.43	349.38	2,297.9	71.4	-13.4	-71.3	0.00	0.00	0.00
2,400.0	3.43	349.38	2,397.7	77.3	-14.5	-77.2	0.00	0.00	0.00
2,500.0	3.43	349.38	2,497.5	83.2	-15.6	-83.0	0.00	0.00	0.00
2,600.0	3.43	349.38	2,597.3	89.1	-16.7	-88.9	0.00	0.00	0.00
2,700.0	3.43	349.38	2,697.2	94.9	-17.8	-94.8	0.00	0.00	0.00
2,800.0	3.43	349.38	2,797.0	100.8	-18.9	-100.6	0.00	0.00	0.00
2,900.0	3.43	349.38	2,896.8	106.7	-20.0	-106.5	0.00	0.00	0.00
3,000.0	3.43	349.38	2,996.6	112.6	-21.1	-112.4	0.00	0.00	0.00
3,100.0	3.43	349.38	3,096.4	118.5	-22.2	-118.3	0.00	0.00	0.00
3,200.0	3.43	349.38	3,196.3	124.3	-23.3	-124.1	0.00	0.00	0.00
3,300.0	3.43	349.38	3,296.1	130.2	-24.4	-130.0	0.00	0.00	0.00
3,400.0	3.43	349.38	3,395.9	136.1	-25.5	-135.9	0.00	0.00	0.00
3,500.0	3.43	349.38	3,495.7	142.0	-26.6	-141.7	0.00	0.00	0.00
3,600.0	3.43	349.38	3,595.5	147.9	-27.7	-147.6	0.00	0.00	0.00
3,700.0	3.43	349.38	3,695.4	153.7	-28.8	-153.5	0.00	0.00	0.00
3,800.0	3.43	349.38	3,795.2	159.6	-29.9	-159.4	0.00	0.00	0.00
3,900.0	3.43	349.38	3,895.0	165.5	-31.0	-165.2	0.00	0.00	0.00
4,000.0	3.43	349.38	3,994.8	171.4	-32.1	-171.1	0.00	0.00	0.00
4,100.0	3.43	349.38	4,094.7	177.3	-33.2	-177.0	0.00	0.00	0.00
4,200.0	3.43	349.38	4,194.5	183.2	-34.3	-182.8	0.00	0.00	0.00
4,300.0	3.43	349.38	4,294.3	189.0	-35.4	-188.7	0.00	0.00	0.00
4,306.7	3.43	349.38	4,301.0	189.4	-35.5	-189.1	0.00	0.00	0.00
SUSSEX									
4,400.0	3.43	349.38	4,394.1	194.9	-36.5	-194.6	0.00	0.00	0.00
4,500.0	3.43	349.38	4,493.9	200.8	-37.6	-200.5	0.00	0.00	0.00
4,600.0	3.43	349.38	4,593.8	206.7	-38.8	-206.3	0.00	0.00	0.00
4,700.0	3.43	349.38	4,693.6	212.6	-39.9	-212.2	0.00	0.00	0.00
4,800.0	3.43	349.38	4,793.4	218.4	-41.0	-218.1	0.00	0.00	0.00

Bill Barrett Corp

Planning Report

Database:	Compass	Local Co-ordinate Reference:	Well WILL 6-62-15-0362CDH
Company:	BILL BARRETT CORP	TVD Reference:	KB @ 4772.0ft (Original Well Elev)
Project:	WELD COUNTY, COLORADO	MD Reference:	KB @ 4772.0ft (Original Well Elev)
Site:	Will 6-62-15_22 NENW Pad	North Reference:	True
Well:	WILL 6-62-15-0362CDH	Survey Calculation Method:	Minimum Curvature
Wellbore:	Wellbore #1		
Design:	Design #1		

Planned Survey									
Measured Depth (ft)	Inclination (°)	Azimuth (°)	Vertical Depth (ft)	+N/-S (ft)	+E/-W (ft)	Vertical Section (ft)	Dogleg Rate (°/100ft)	Build Rate (°/100ft)	Turn Rate (°/100ft)
4,900.0	3.43	349.38	4,893.2	224.3	-42.1	-223.9	0.00	0.00	0.00
4,988.1	3.43	349.38	4,981.2	229.5	-43.0	-229.1	0.00	0.00	0.00
SHANNON									
5,000.0	3.43	349.38	4,993.0	230.2	-43.2	-229.8	0.00	0.00	0.00
5,100.0	3.43	349.38	5,092.9	236.1	-44.3	-235.7	0.00	0.00	0.00
5,200.0	3.43	349.38	5,192.7	242.0	-45.4	-241.6	0.00	0.00	0.00
5,300.0	3.43	349.38	5,292.5	247.8	-46.5	-247.4	0.00	0.00	0.00
5,400.0	3.43	349.38	5,392.3	253.7	-47.6	-253.3	0.00	0.00	0.00
5,500.0	3.43	349.38	5,492.1	259.6	-48.7	-259.2	0.00	0.00	0.00
5,600.0	3.43	349.38	5,592.0	265.5	-49.8	-265.0	0.00	0.00	0.00
5,700.0	3.43	349.38	5,691.8	271.4	-50.9	-270.9	0.00	0.00	0.00
5,754.4	3.43	349.38	5,746.1	274.6	-51.5	-274.1	0.00	0.00	0.00
5,800.0	2.52	349.38	5,791.6	276.9	-51.9	-276.4	2.00	-2.00	0.00
5,900.0	0.52	349.38	5,891.6	279.5	-52.4	-279.0	2.00	-2.00	0.00
5,926.0	0.00	180.18	5,917.5	279.6	-52.4	-279.1	2.00	-2.00	0.00
6,000.0	0.00	180.18	5,991.6	279.6	-52.4	-279.1	0.00	0.00	0.00
6,100.0	0.00	180.18	6,091.6	279.6	-52.4	-279.1	0.00	0.00	0.00
6,176.0	0.00	180.18	6,167.5	279.6	-52.4	-279.1	0.00	0.00	0.00
6,200.0	2.89	180.18	6,191.6	279.0	-52.4	-278.5	12.00	12.00	0.00
6,250.1	8.89	180.18	6,241.4	273.9	-52.4	-273.4	11.96	11.96	0.00
SHARON SPRINGS									
6,300.0	14.89	180.18	6,290.2	263.6	-52.5	-263.1	12.04	12.04	0.00
6,346.3	20.44	180.18	6,334.3	249.5	-52.5	-249.1	12.00	12.00	0.00
NIOBRARA									
6,384.2	24.99	180.18	6,369.2	234.9	-52.6	-234.5	12.00	12.00	0.00
A CHALK									
6,400.0	26.89	180.18	6,383.5	228.0	-52.6	-227.5	12.00	12.00	0.00
6,485.6	37.16	180.18	6,456.0	182.7	-52.7	-182.2	12.00	12.00	0.00
B CHALK									
6,500.0	38.89	180.18	6,467.3	173.8	-52.8	-173.3	12.00	12.00	0.00
6,585.4	49.13	180.18	6,528.6	114.6	-53.0	-114.1	12.00	12.00	0.00
C CHALK									
6,600.0	50.89	180.18	6,538.0	103.4	-53.0	-102.9	12.00	12.00	0.00
6,649.8	56.86	180.18	6,567.3	63.2	-53.1	-62.7	12.00	12.00	0.00
C MARL									
6,700.0	62.89	180.18	6,592.5	19.8	-53.3	-19.3	12.00	12.00	0.00
6,752.5	69.19	180.18	6,613.9	-28.2	-53.4	28.7	12.00	12.00	0.00
FT HAYS									
6,800.0	74.89	180.18	6,628.5	-73.3	-53.6	73.8	12.00	12.00	0.00
6,846.3	80.44	180.18	6,638.4	-118.6	-53.7	119.0	12.00	12.00	0.00
TOP CDLL TARGET									
6,900.0	86.88	180.18	6,644.3	-171.9	-53.9	172.4	12.00	12.00	0.00
6,928.5	90.30	180.18	6,645.0	-200.4	-54.0	200.8	12.00	12.00	0.00
W 15-0362CDH2 LP									
6,982.5	90.30	180.18	6,644.7	-254.4	-54.1	254.9	0.00	0.00	0.00
7" Csg									
7,000.0	90.30	180.18	6,644.6	-271.9	-54.2	272.4	0.00	0.00	0.00
7,100.0	90.30	180.18	6,644.1	-371.9	-54.5	372.3	0.00	0.00	0.00
7,200.0	90.30	180.18	6,643.6	-471.9	-54.8	472.3	0.00	0.00	0.00
7,300.0	90.30	180.18	6,643.0	-571.9	-55.1	572.3	0.00	0.00	0.00
7,400.0	90.30	180.18	6,642.5	-671.9	-55.5	672.3	0.00	0.00	0.00
7,500.0	90.30	180.18	6,642.0	-771.9	-55.8	772.3	0.00	0.00	0.00
7,600.0	90.30	180.18	6,641.5	-871.9	-56.1	872.3	0.00	0.00	0.00

Bill Barrett Corp

Planning Report

Database:	Compass	Local Co-ordinate Reference:	Well WILL 6-62-15-0362CDH
Company:	BILL BARRETT CORP	TVD Reference:	KB @ 4772.0ft (Original Well Elev)
Project:	WELD COUNTY, COLORADO	MD Reference:	KB @ 4772.0ft (Original Well Elev)
Site:	Will 6-62-15_22 NENW Pad	North Reference:	True
Well:	WILL 6-62-15-0362CDH	Survey Calculation Method:	Minimum Curvature
Wellbore:	Wellbore #1		
Design:	Design #1		

Planned Survey									
Measured Depth (ft)	Inclination (°)	Azimuth (°)	Vertical Depth (ft)	+N/-S (ft)	+E/-W (ft)	Vertical Section (ft)	Dogleg Rate (°/100ft)	Build Rate (°/100ft)	Turn Rate (°/100ft)
7,700.0	90.30	180.18	6,640.9	-971.9	-56.4	972.3	0.00	0.00	0.00
7,800.0	90.30	180.18	6,640.4	-1,071.9	-56.7	1,072.3	0.00	0.00	0.00
7,900.0	90.30	180.18	6,639.9	-1,171.9	-57.1	1,172.3	0.00	0.00	0.00
8,000.0	90.30	180.18	6,639.4	-1,271.9	-57.4	1,272.3	0.00	0.00	0.00
8,100.0	90.30	180.18	6,638.8	-1,371.9	-57.7	1,372.3	0.00	0.00	0.00
8,200.0	90.30	180.18	6,638.3	-1,471.9	-58.0	1,472.3	0.00	0.00	0.00
8,300.0	90.30	180.18	6,637.8	-1,571.9	-58.3	1,572.3	0.00	0.00	0.00
8,400.0	90.30	180.18	6,637.3	-1,671.9	-58.6	1,672.3	0.00	0.00	0.00
8,500.0	90.30	180.18	6,636.7	-1,771.9	-59.0	1,772.3	0.00	0.00	0.00
8,600.0	90.30	180.18	6,636.2	-1,871.9	-59.3	1,872.3	0.00	0.00	0.00
8,700.0	90.30	180.18	6,635.7	-1,971.9	-59.6	1,972.3	0.00	0.00	0.00
8,800.0	90.30	180.18	6,635.2	-2,071.9	-59.9	2,072.3	0.00	0.00	0.00
8,900.0	90.30	180.18	6,634.6	-2,171.9	-60.2	2,172.3	0.00	0.00	0.00
9,000.0	90.30	180.18	6,634.1	-2,271.9	-60.6	2,272.3	0.00	0.00	0.00
9,100.0	90.30	180.18	6,633.6	-2,371.9	-60.9	2,372.3	0.00	0.00	0.00
9,200.0	90.30	180.18	6,633.1	-2,471.9	-61.2	2,472.3	0.00	0.00	0.00
9,300.0	90.30	180.18	6,632.5	-2,571.8	-61.5	2,572.3	0.00	0.00	0.00
9,400.0	90.30	180.18	6,632.0	-2,671.8	-61.8	2,672.3	0.00	0.00	0.00
9,500.0	90.30	180.18	6,631.5	-2,771.8	-62.2	2,772.3	0.00	0.00	0.00
9,600.0	90.30	180.18	6,631.0	-2,871.8	-62.5	2,872.3	0.00	0.00	0.00
9,700.0	90.30	180.18	6,630.4	-2,971.8	-62.8	2,972.3	0.00	0.00	0.00
9,800.0	90.30	180.18	6,629.9	-3,071.8	-63.1	3,072.3	0.00	0.00	0.00
9,900.0	90.30	180.18	6,629.4	-3,171.8	-63.4	3,172.3	0.00	0.00	0.00
10,000.0	90.30	180.18	6,628.9	-3,271.8	-63.8	3,272.3	0.00	0.00	0.00
10,100.0	90.30	180.18	6,628.3	-3,371.8	-64.1	3,372.3	0.00	0.00	0.00
10,200.0	90.30	180.18	6,627.8	-3,471.8	-64.4	3,472.3	0.00	0.00	0.00
10,300.0	90.30	180.18	6,627.3	-3,571.8	-64.7	3,572.3	0.00	0.00	0.00
10,400.0	90.30	180.18	6,626.8	-3,671.8	-65.0	3,672.3	0.00	0.00	0.00
10,500.0	90.30	180.18	6,626.2	-3,771.8	-65.3	3,772.3	0.00	0.00	0.00
10,600.0	90.30	180.18	6,625.7	-3,871.8	-65.7	3,872.2	0.00	0.00	0.00
10,700.0	90.30	180.18	6,625.2	-3,971.8	-66.0	3,972.2	0.00	0.00	0.00
10,800.0	90.30	180.18	6,624.7	-4,071.8	-66.3	4,072.2	0.00	0.00	0.00
10,900.0	90.30	180.18	6,624.1	-4,171.8	-66.6	4,172.2	0.00	0.00	0.00
11,000.0	90.30	180.18	6,623.6	-4,271.8	-66.9	4,272.2	0.00	0.00	0.00
11,100.0	90.30	180.18	6,623.1	-4,371.8	-67.3	4,372.2	0.00	0.00	0.00
11,200.0	90.30	180.18	6,622.6	-4,471.8	-67.6	4,472.2	0.00	0.00	0.00
11,300.0	90.30	180.18	6,622.0	-4,571.8	-67.9	4,572.2	0.00	0.00	0.00
11,400.0	90.30	180.18	6,621.5	-4,671.8	-68.2	4,672.2	0.00	0.00	0.00
11,500.0	90.30	180.18	6,621.0	-4,771.8	-68.5	4,772.2	0.00	0.00	0.00
11,600.0	90.30	180.18	6,620.5	-4,871.8	-68.9	4,872.2	0.00	0.00	0.00
11,700.0	90.30	180.18	6,619.9	-4,971.8	-69.2	4,972.2	0.00	0.00	0.00
11,800.0	90.30	180.18	6,619.4	-5,071.8	-69.5	5,072.2	0.00	0.00	0.00
11,900.0	90.30	180.18	6,618.9	-5,171.8	-69.8	5,172.2	0.00	0.00	0.00
12,000.0	90.30	180.18	6,618.4	-5,271.8	-70.1	5,272.2	0.00	0.00	0.00
12,100.0	90.30	180.18	6,617.8	-5,371.8	-70.4	5,372.2	0.00	0.00	0.00
12,200.0	90.30	180.18	6,617.3	-5,471.8	-70.8	5,472.2	0.00	0.00	0.00
12,300.0	90.30	180.18	6,616.8	-5,571.8	-71.1	5,572.2	0.00	0.00	0.00
12,400.0	90.30	180.18	6,616.3	-5,671.8	-71.4	5,672.2	0.00	0.00	0.00
12,500.0	90.30	180.18	6,615.7	-5,771.8	-71.7	5,772.2	0.00	0.00	0.00
12,600.0	90.30	180.18	6,615.2	-5,871.8	-72.0	5,872.2	0.00	0.00	0.00
12,700.0	90.30	180.18	6,614.7	-5,971.8	-72.4	5,972.2	0.00	0.00	0.00
12,800.0	90.30	180.18	6,614.2	-6,071.8	-72.7	6,072.2	0.00	0.00	0.00
12,900.0	90.30	180.18	6,613.6	-6,171.8	-73.0	6,172.2	0.00	0.00	0.00
13,000.0	90.30	180.18	6,613.1	-6,271.8	-73.3	6,272.2	0.00	0.00	0.00

Bill Barrett Corp

Planning Report

Database:	Compass	Local Co-ordinate Reference:	Well WILL 6-62-15-0362CDH
Company:	BILL BARRETT CORP	TVD Reference:	KB @ 4772.0ft (Original Well Elev)
Project:	WELD COUNTY, COLORADO	MD Reference:	KB @ 4772.0ft (Original Well Elev)
Site:	Will 6-62-15_22 NENW Pad	North Reference:	True
Well:	WILL 6-62-15-0362CDH	Survey Calculation Method:	Minimum Curvature
Wellbore:	Wellbore #1		
Design:	Design #1		

Planned Survey									
Measured Depth (ft)	Inclination (°)	Azimuth (°)	Vertical Depth (ft)	+N/-S (ft)	+E/-W (ft)	Vertical Section (ft)	Dogleg Rate (°/100ft)	Build Rate (°/100ft)	Turn Rate (°/100ft)
13,100.0	90.30	180.18	6,612.6	-6,371.8	-73.6	6,372.2	0.00	0.00	0.00
13,200.0	90.30	180.18	6,612.1	-6,471.8	-74.0	6,472.2	0.00	0.00	0.00
13,300.0	90.30	180.18	6,611.5	-6,571.8	-74.3	6,572.2	0.00	0.00	0.00
13,400.0	90.30	180.18	6,611.0	-6,671.8	-74.6	6,672.2	0.00	0.00	0.00
13,500.0	90.30	180.18	6,610.5	-6,771.8	-74.9	6,772.2	0.00	0.00	0.00
13,600.0	90.30	180.18	6,610.0	-6,871.8	-75.2	6,872.2	0.00	0.00	0.00
13,700.0	90.30	180.18	6,609.4	-6,971.8	-75.5	6,972.2	0.00	0.00	0.00
13,800.0	90.30	180.18	6,608.9	-7,071.8	-75.9	7,072.2	0.00	0.00	0.00
13,900.0	90.30	180.18	6,608.4	-7,171.8	-76.2	7,172.2	0.00	0.00	0.00
14,000.0	90.30	180.18	6,607.9	-7,271.8	-76.5	7,272.1	0.00	0.00	0.00
14,100.0	90.30	180.18	6,607.3	-7,371.8	-76.8	7,372.1	0.00	0.00	0.00
14,200.0	90.30	180.18	6,606.8	-7,471.8	-77.1	7,472.1	0.00	0.00	0.00
14,300.0	90.30	180.18	6,606.3	-7,571.8	-77.5	7,572.1	0.00	0.00	0.00
14,400.0	90.30	180.18	6,605.7	-7,671.8	-77.8	7,672.1	0.00	0.00	0.00
14,500.0	90.30	180.18	6,605.2	-7,771.8	-78.1	7,772.1	0.00	0.00	0.00
14,600.0	90.30	180.18	6,604.7	-7,871.7	-78.4	7,872.1	0.00	0.00	0.00
14,700.0	90.30	180.18	6,604.2	-7,971.7	-78.7	7,972.1	0.00	0.00	0.00
14,800.0	90.30	180.18	6,603.6	-8,071.7	-79.1	8,072.1	0.00	0.00	0.00
14,900.0	90.30	180.18	6,603.1	-8,171.7	-79.4	8,172.1	0.00	0.00	0.00
15,000.0	90.30	180.18	6,602.6	-8,271.7	-79.7	8,272.1	0.00	0.00	0.00
15,100.0	90.30	180.18	6,602.1	-8,371.7	-80.0	8,372.1	0.00	0.00	0.00
15,200.0	90.30	180.18	6,601.5	-8,471.7	-80.3	8,472.1	0.00	0.00	0.00
15,300.0	90.30	180.18	6,601.0	-8,571.7	-80.7	8,572.1	0.00	0.00	0.00
15,400.0	90.30	180.18	6,600.5	-8,671.7	-81.0	8,672.1	0.00	0.00	0.00
15,500.0	90.30	180.18	6,600.0	-8,771.7	-81.3	8,772.1	0.00	0.00	0.00
15,600.0	90.30	180.18	6,599.4	-8,871.7	-81.6	8,872.1	0.00	0.00	0.00
15,700.0	90.30	180.18	6,598.9	-8,971.7	-81.9	8,972.1	0.00	0.00	0.00
15,800.0	90.30	180.18	6,598.4	-9,071.7	-82.2	9,072.1	0.00	0.00	0.00
15,900.0	90.30	180.18	6,597.9	-9,171.7	-82.6	9,172.1	0.00	0.00	0.00
16,000.0	90.30	180.18	6,597.3	-9,271.7	-82.9	9,272.1	0.00	0.00	0.00
16,100.0	90.30	180.18	6,596.8	-9,371.7	-83.2	9,372.1	0.00	0.00	0.00
16,200.0	90.30	180.18	6,596.3	-9,471.7	-83.5	9,472.1	0.00	0.00	0.00
16,300.0	90.30	180.18	6,595.8	-9,571.7	-83.8	9,572.1	0.00	0.00	0.00
16,400.0	90.30	180.18	6,595.2	-9,671.7	-84.2	9,672.1	0.00	0.00	0.00
16,446.1	90.30	180.18	6,595.0	-9,717.8	-84.3	9,718.2	0.00	0.00	0.00
W 15-0362CDH2 PBHL									

Casing Points					
Measured Depth (ft)	Vertical Depth (ft)	Name	Casing Diameter (")	Hole Diameter (")	
6,982.5	6,644.7	7" Csg	7	8-3/4	

Bill Barrett Corp

Planning Report

Database:	Compass	Local Co-ordinate Reference:	Well WILL 6-62-15-0362CDH
Company:	BILL BARRETT CORP	TVD Reference:	KB @ 4772.0ft (Original Well Elev)
Project:	WELD COUNTY, COLORADO	MD Reference:	KB @ 4772.0ft (Original Well Elev)
Site:	Will 6-62-15_22 NENW Pad	North Reference:	True
Well:	WILL 6-62-15-0362CDH	Survey Calculation Method:	Minimum Curvature
Wellbore:	Wellbore #1		
Design:	Design #1		

Formations						
Measured Depth (ft)	Vertical Depth (ft)	Name	Lithology	Dip (°)	Dip Direction (°)	
272.0	272.0	FOX HILLS BASE		-0.30	180.18	
4,306.7	4,300.0	SUSSEX		-0.30	180.18	
4,988.1	4,980.0	SHANNON		-0.30	180.18	
6,250.1	6,240.0	SHARON SPRINGS		-0.30	180.18	
6,346.3	6,333.0	NIOBRARA		-0.30	180.18	
6,384.2	6,368.0	A CHALK		-0.30	180.18	
6,485.6	6,455.0	B CHALK		-0.30	180.18	
6,585.4	6,528.0	C CHALK		-0.30	180.18	
6,649.8	6,567.0	C MARL		-0.30	180.18	
6,752.5	6,614.0	FT HAYS		-0.30	180.18	
6,846.3	6,639.0	TOP CDLL TARGET		-0.30	180.18	
	6,649.0	BASE CDLL TARGET		-0.30	180.18	