

State	CO
-------	----

State CO

AP# : 05061068760000000

Other Services

SEC 33 TWP 20S RGE 50W

Permanent Datum	Ground Level	Elevation	4268'
Log Measured From	K.B 12' AGL		

Elevation  
K.B. 4280'  
D.F. 4279'  
G.L. 4268'

Date	10-30-13
------	----------

Run Number	ONE
Depth Driller	5605'

Depth Logger	4812'
Bottom / Seafloor Material	4814'

Bottom Log Interval	4011
Top Log Interval	Surface

Open Hole Size	7 7/8"
Type Fluid	Water

Density / Viscosity	////
---------------------	------

Max. Recorded Temp.	////
Estimated Cement Top	////

Time Well Ready	12:45 P.M.
-----------------	------------

Time Logger on Bottom	1:00 P.M.
Equipment Number	T-440

Location	Hays, KS
Recorded By	Conroy Patterson

Recorded by	Casey Faller
Witnessed By	Mr. Dave Mar

Borehole Record		
Run Number	Bit	From To

2	3	4	5	6	7	8	9	10	11	12	13	14	15	16	17	18	19	20	21	22	23	24	25	26	27	28	29	30	31	32	33	34	35	36	37	38	39	40	41	42	43	44	45	46	47	48	49	50	51	52	53	54	55	56	57	58	59	60	61	62	63	64	65	66	67	68	69	70	71	72	73	74	75	76	77	78	79	80	81	82	83	84	85	86	87	88	89	90	91	92	93	94	95	96	97	98	99	100	101	102	103	104	105	106	107	108	109	110	111	112	113	114	115	116	117	118	119	120	121	122	123	124	125	126	127	128	129	130	131	132	133	134	135	136	137	138	139	140	141	142	143	144	145	146	147	148	149	150	151	152	153	154	155	156	157	158	159	160	161	162	163	164	165	166	167	168	169	170	171	172	173	174	175	176	177	178	179	180	181	182	183	184	185	186	187	188	189	190	191	192	193	194	195	196	197	198	199	200	201	202	203	204	205	206	207	208	209	210	211	212	213	214	215	216	217	218	219	220	221	222	223	224	225	226	227	228	229	230	231	232	233	234	235	236	237	238	239	240	241	242	243	244	245	246	247	248	249	250	251	252	253	254	255	256	257	258	259	260	261	262	263	264	265	266	267	268	269	270	271	272	273	274	275	276	277	278	279	280	281	282	283	284	285	286	287	288	289	290	291	292	293	294	295	296	297	298	299	300	301	302	303	304	305	306	307	308	309	310	311	312	313	314	315	316	317	318	319	320	321	322	323	324	325	326	327	328	329	330	331	332	333	334	335	336	337	338	339	340	341	342	343	344	345	346	347	348	349	350	351	352	353	354	355	356	357	358	359	360	361	362	363	364	365	366	367	368	369	370	371	372	373	374	375	376	377	378	379	380	381	382	383	384	385	386	387	388	389	390	391	392	393	394	395	396	397	398	399	400	401	402	403	404	405	406	407	408	409	410	411	412	413	414	415	416	417	418	419	420	421	422	423	424	425	426	427	428	429	430	431	432	433	434	435	436	437	438	439	440	441	442	443	444	445	446	447	448	449	450	451	452	453	454	455	456	457	458	459	460	461	462	463	464	465	466	467
---	---	---	---	---	---	---	---	----	----	----	----	----	----	----	----	----	----	----	----	----	----	----	----	----	----	----	----	----	----	----	----	----	----	----	----	----	----	----	----	----	----	----	----	----	----	----	----	----	----	----	----	----	----	----	----	----	----	----	----	----	----	----	----	----	----	----	----	----	----	----	----	----	----	----	----	----	----	----	----	----	----	----	----	----	----	----	----	----	----	----	----	----	----	----	----	----	----	-----	-----	-----	-----	-----	-----	-----	-----	-----	-----	-----	-----	-----	-----	-----	-----	-----	-----	-----	-----	-----	-----	-----	-----	-----	-----	-----	-----	-----	-----	-----	-----	-----	-----	-----	-----	-----	-----	-----	-----	-----	-----	-----	-----	-----	-----	-----	-----	-----	-----	-----	-----	-----	-----	-----	-----	-----	-----	-----	-----	-----	-----	-----	-----	-----	-----	-----	-----	-----	-----	-----	-----	-----	-----	-----	-----	-----	-----	-----	-----	-----	-----	-----	-----	-----	-----	-----	-----	-----	-----	-----	-----	-----	-----	-----	-----	-----	-----	-----	-----	-----	-----	-----	-----	-----	-----	-----	-----	-----	-----	-----	-----	-----	-----	-----	-----	-----	-----	-----	-----	-----	-----	-----	-----	-----	-----	-----	-----	-----	-----	-----	-----	-----	-----	-----	-----	-----	-----	-----	-----	-----	-----	-----	-----	-----	-----	-----	-----	-----	-----	-----	-----	-----	-----	-----	-----	-----	-----	-----	-----	-----	-----	-----	-----	-----	-----	-----	-----	-----	-----	-----	-----	-----	-----	-----	-----	-----	-----	-----	-----	-----	-----	-----	-----	-----	-----	-----	-----	-----	-----	-----	-----	-----	-----	-----	-----	-----	-----	-----	-----	-----	-----	-----	-----	-----	-----	-----	-----	-----	-----	-----	-----	-----	-----	-----	-----	-----	-----	-----	-----	-----	-----	-----	-----	-----	-----	-----	-----	-----	-----	-----	-----	-----	-----	-----	-----	-----	-----	-----	-----	-----	-----	-----	-----	-----	-----	-----	-----	-----	-----	-----	-----	-----	-----	-----	-----	-----	-----	-----	-----	-----	-----	-----	-----	-----	-----	-----	-----	-----	-----	-----	-----	-----	-----	-----	-----	-----	-----	-----	-----	-----	-----	-----	-----	-----	-----	-----	-----	-----	-----	-----	-----	-----	-----	-----	-----	-----	-----	-----	-----	-----	-----	-----	-----	-----	-----	-----	-----	-----	-----	-----	-----	-----	-----	-----	-----	-----	-----	-----	-----	-----	-----	-----	-----	-----	-----	-----	-----	-----	-----	-----	-----	-----	-----	-----	-----	-----	-----	-----	-----	-----	-----	-----	-----	-----	-----	-----	-----	-----	-----	-----	-----	-----	-----	-----	-----	-----	-----	-----	-----	-----	-----	-----	-----	-----	-----	-----	-----


Casino Record	Size	W

Surface String		
Street Outlines		

Prod. string		
Production String		

liner		
-------	--	--

<<< Fold Here >>>

All interpretations are opinions based on inferences from electrical or other measurements and we cannot and do not guarantee the accuracy or correctness of any interpretation, and we shall not, except in the case of gross or willful negligence on our part, be liable or responsible for any loss, costs, damages, or expenses incurred or sustained by anyone resulting from any interpretation made by any of our officers, agents or employees. These interpretations are also subject to our general terms and conditions set out in our current Price Schedule.

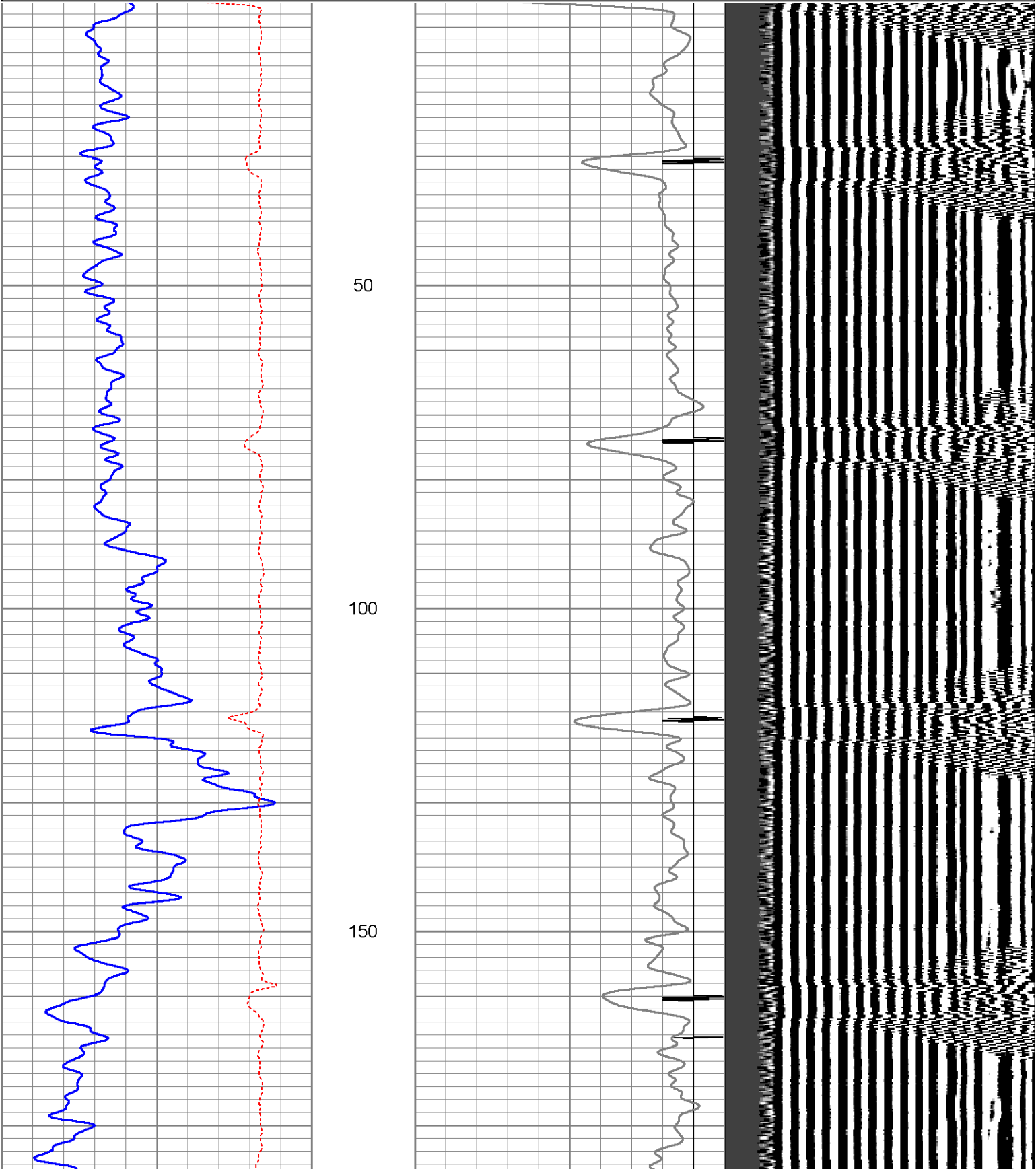
Comments

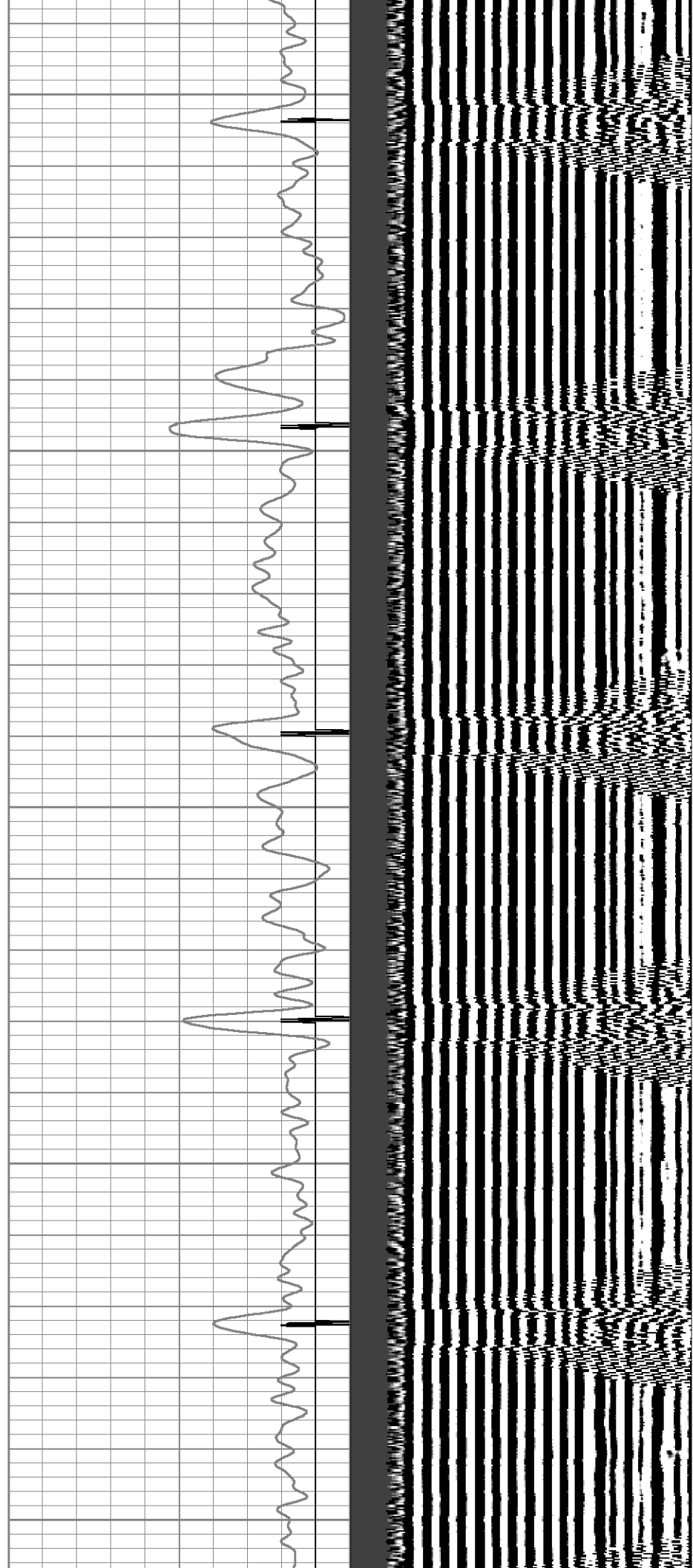
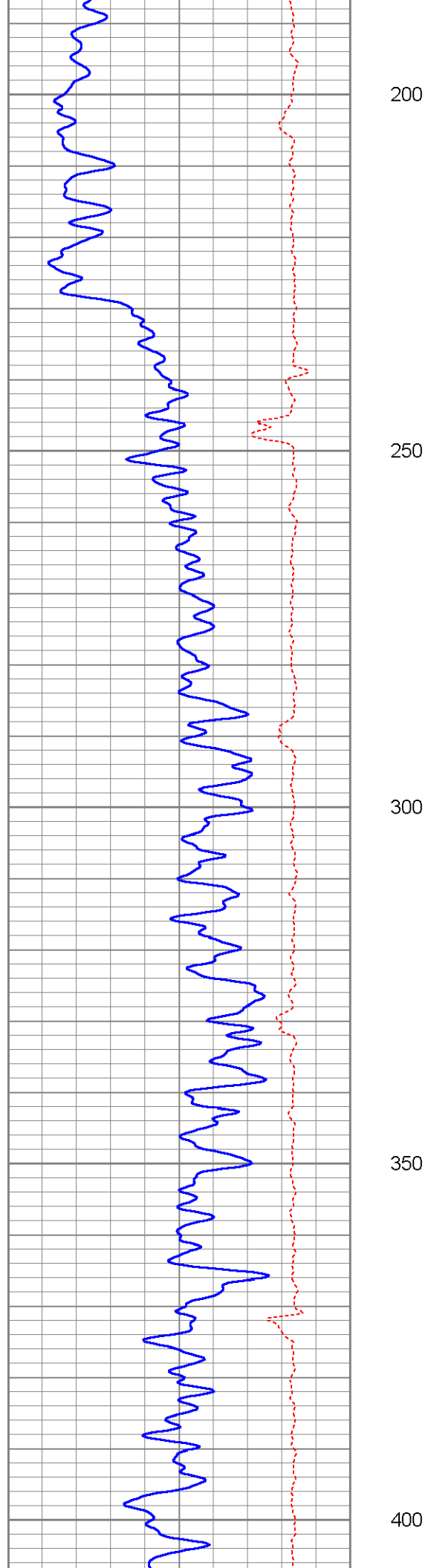
Ran Under 500 Psi.

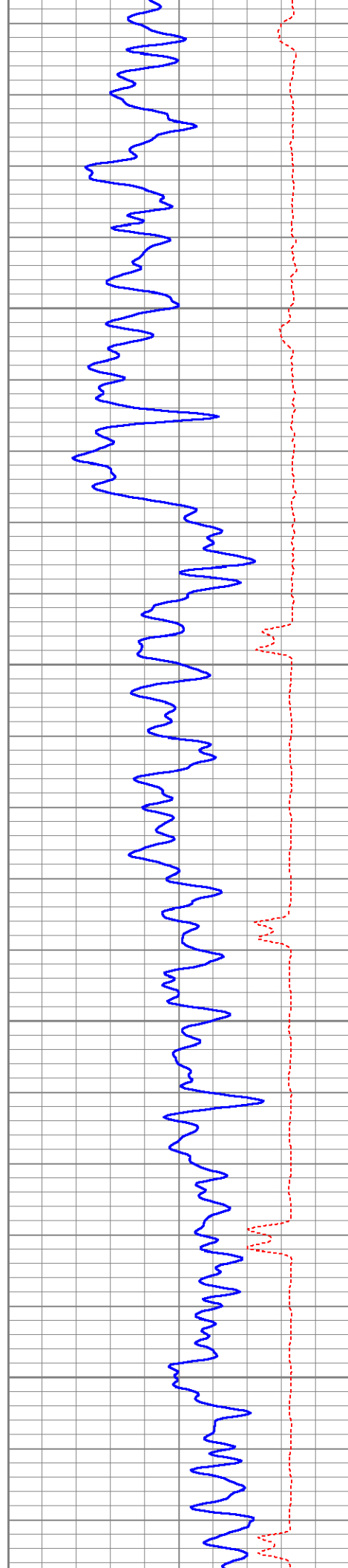


Database File: weirich32-33psicbl.db  
Dataset Pathname: pass2  
Presentation Format: cbl  
Dataset Creation: Wed Oct 30 13:46:48 2013 by Log Open-Cased 071220  
Charted by: Depth in Feet scaled 1:240

0	GR (GAPI)	150	18	CCL	-2	200	VDL	1200
150	GR (GAPI)	300	0	AMP3 (mV)	100			
420	TT3FT (usec)	220						





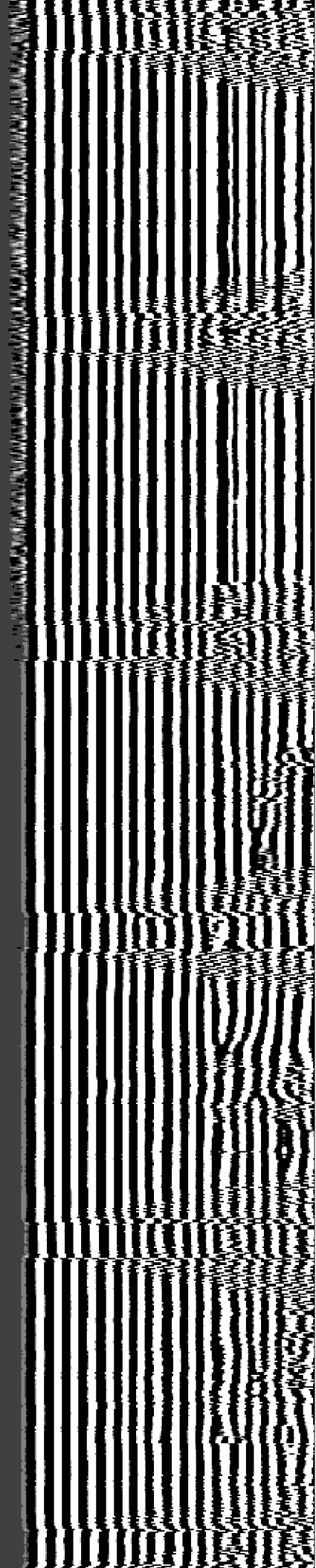
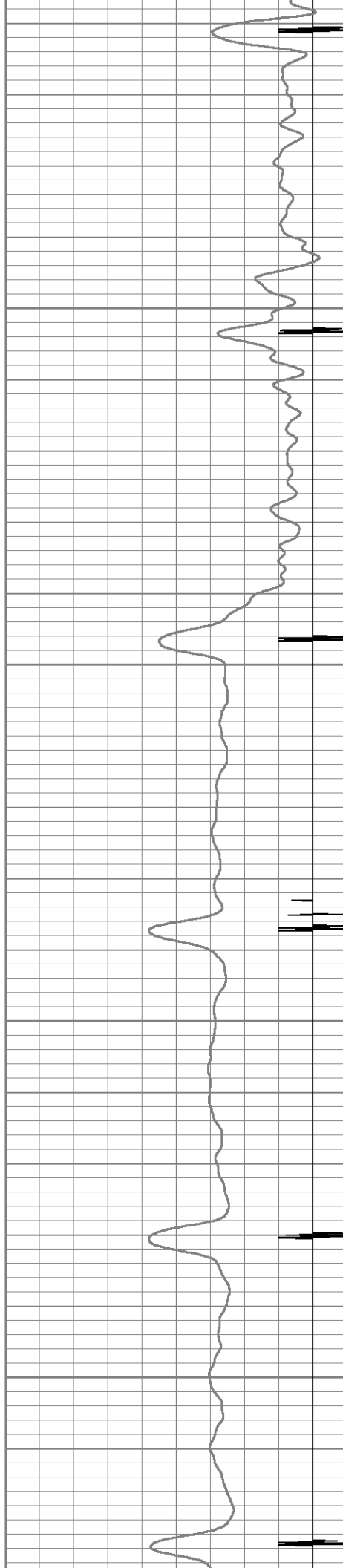


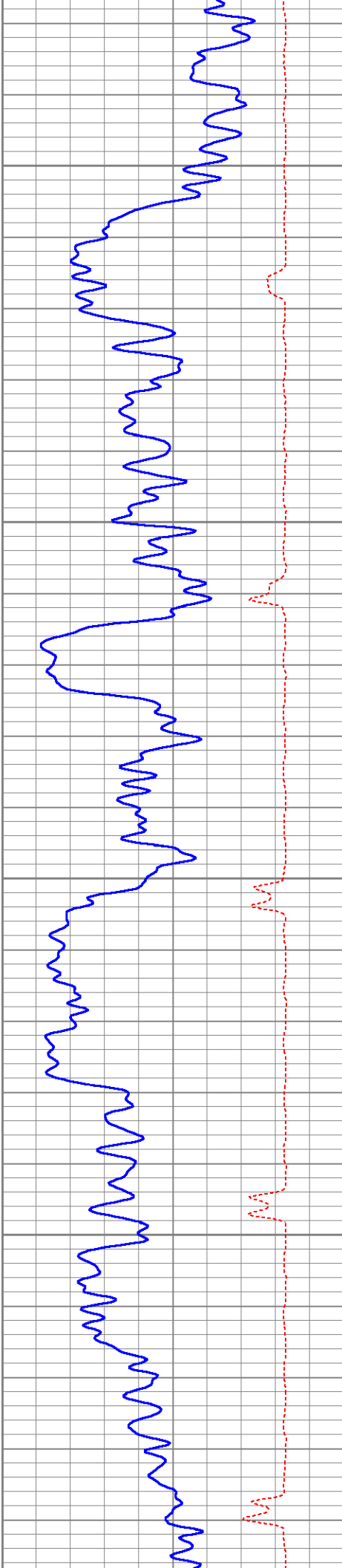
450

500

550

600



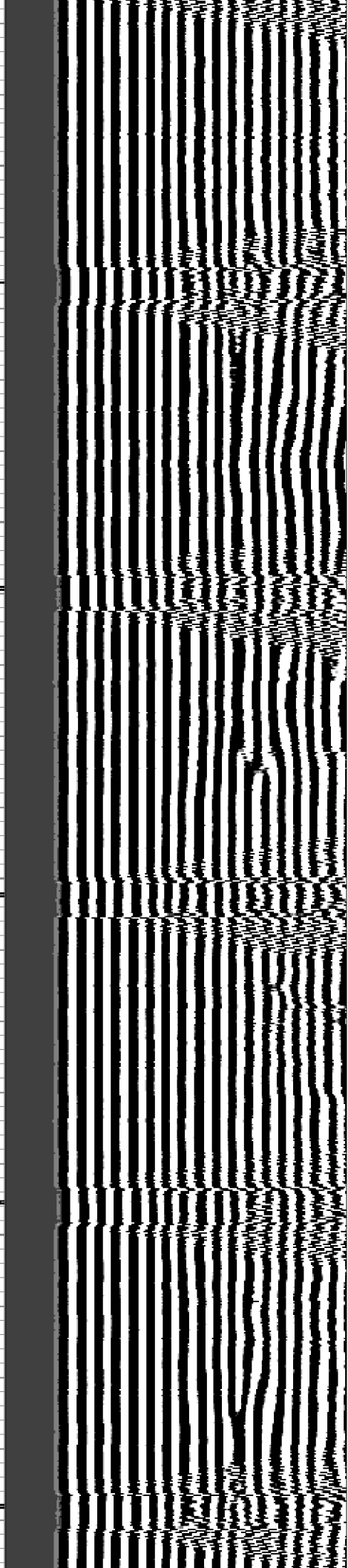
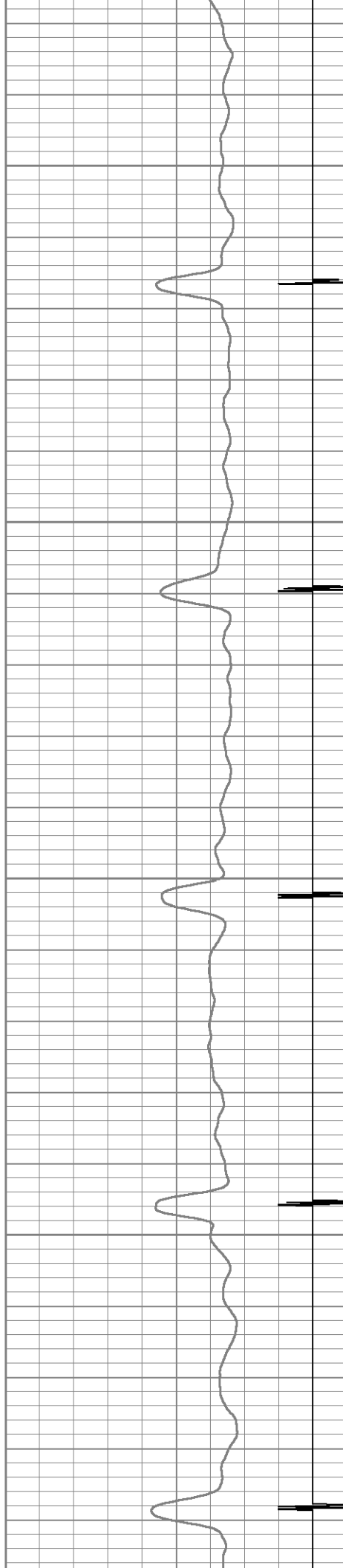


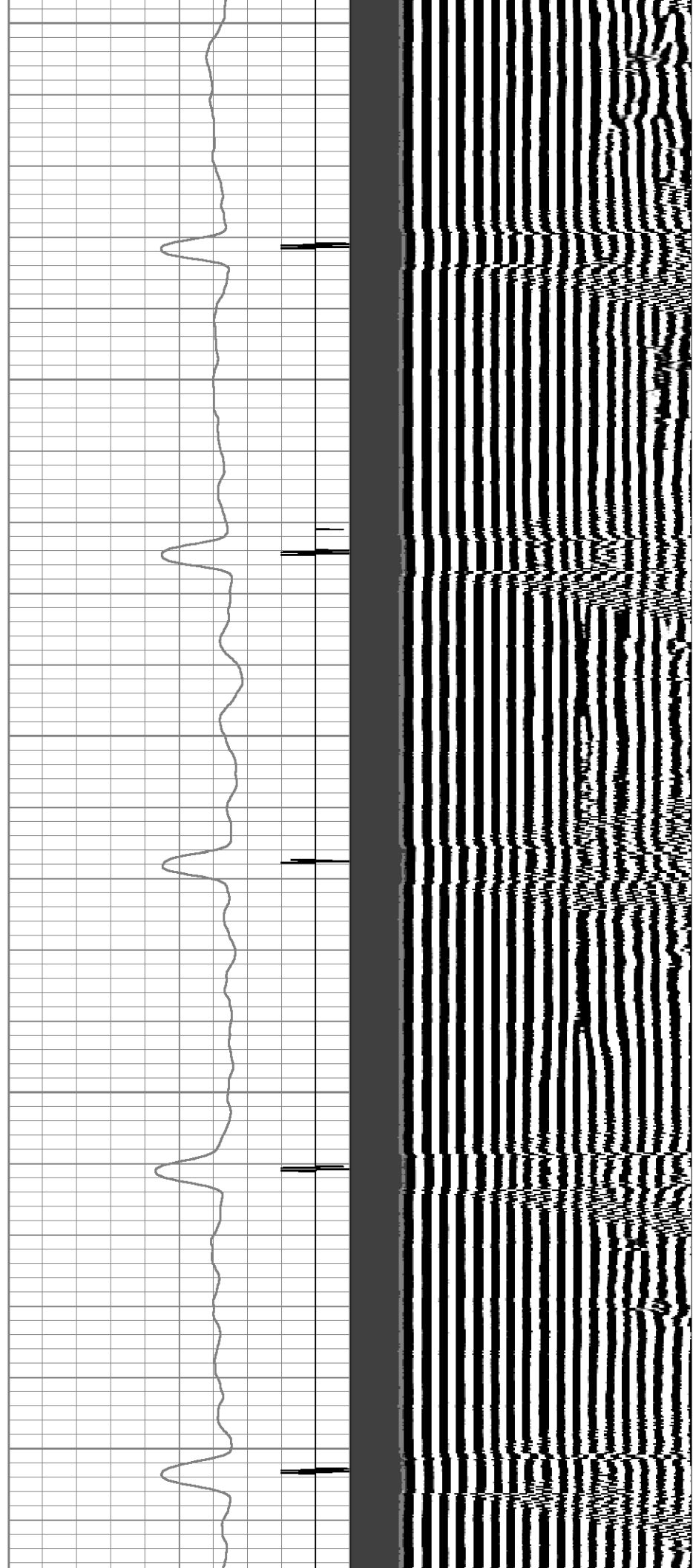
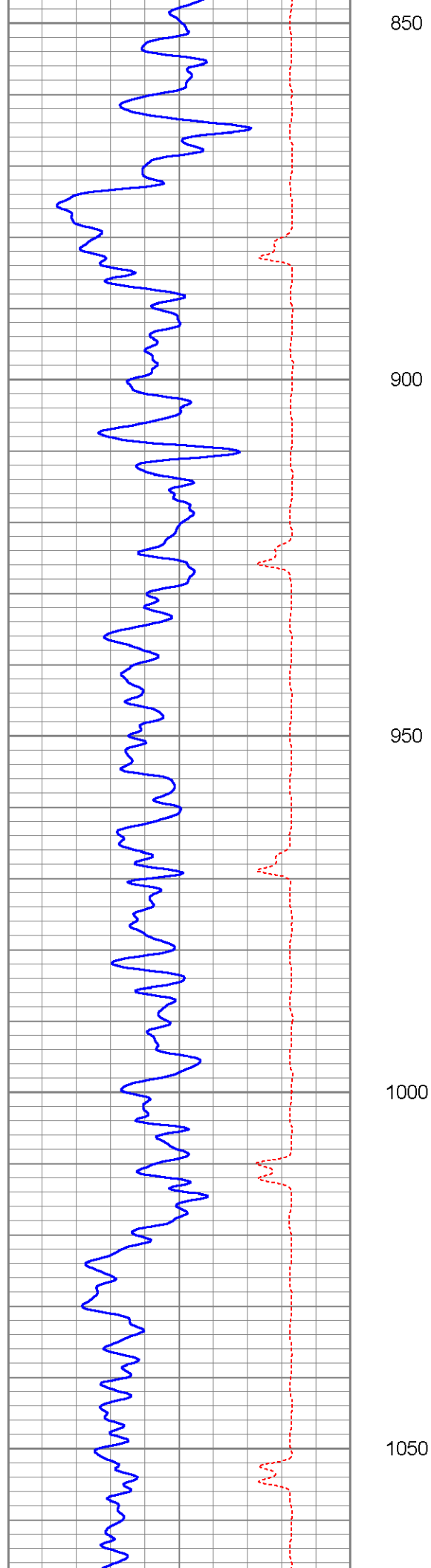
650

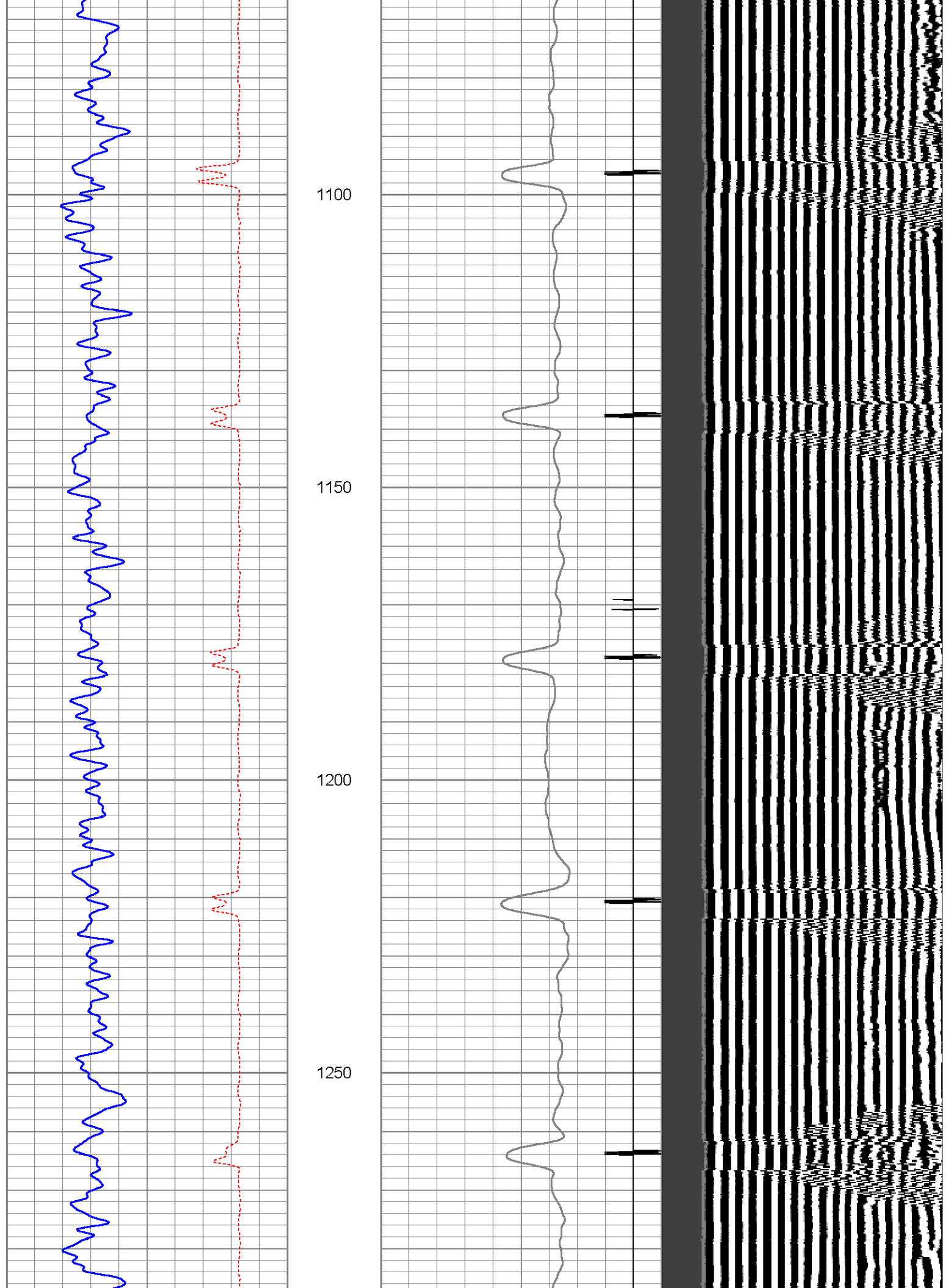
700

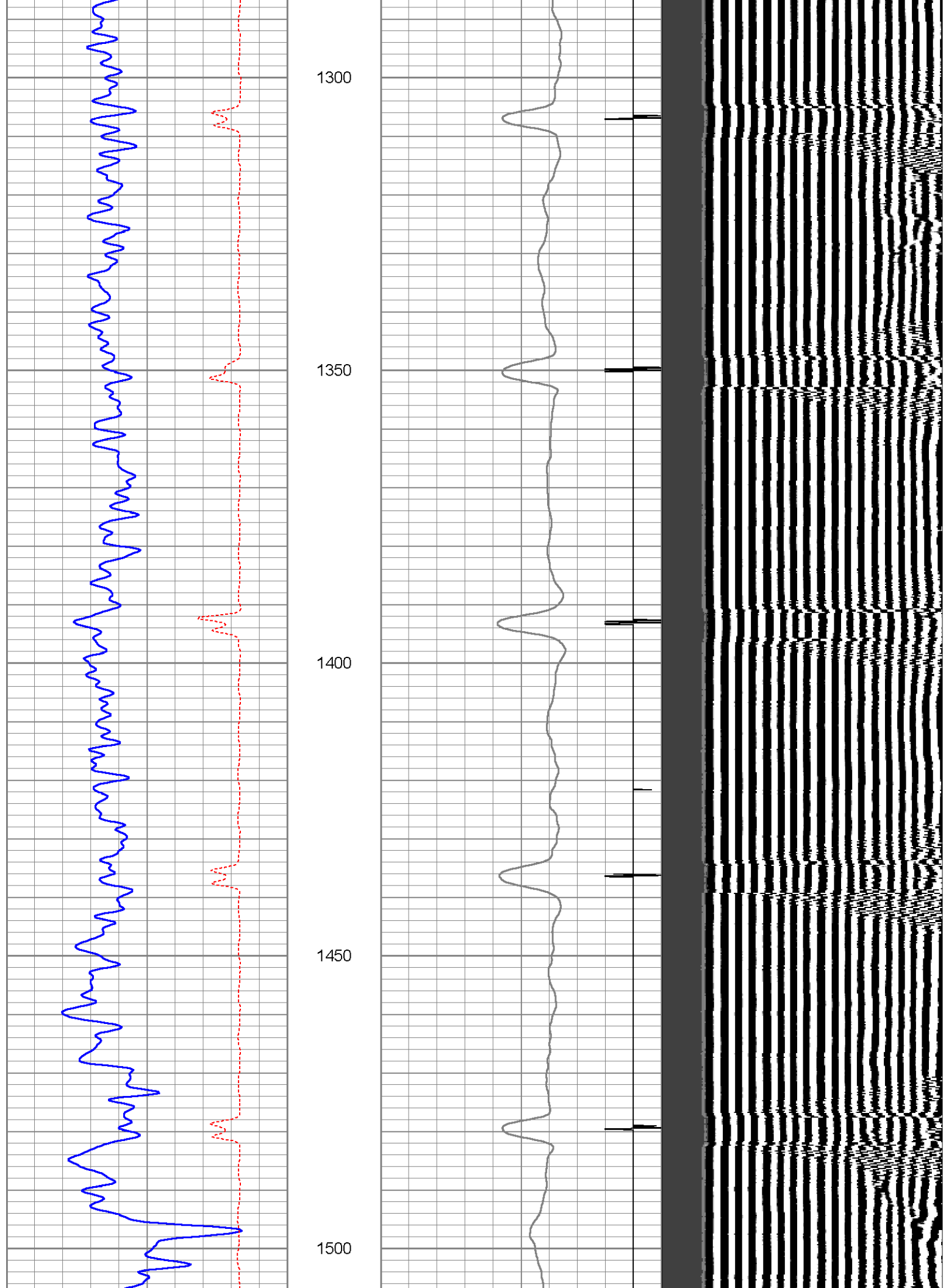
750

800

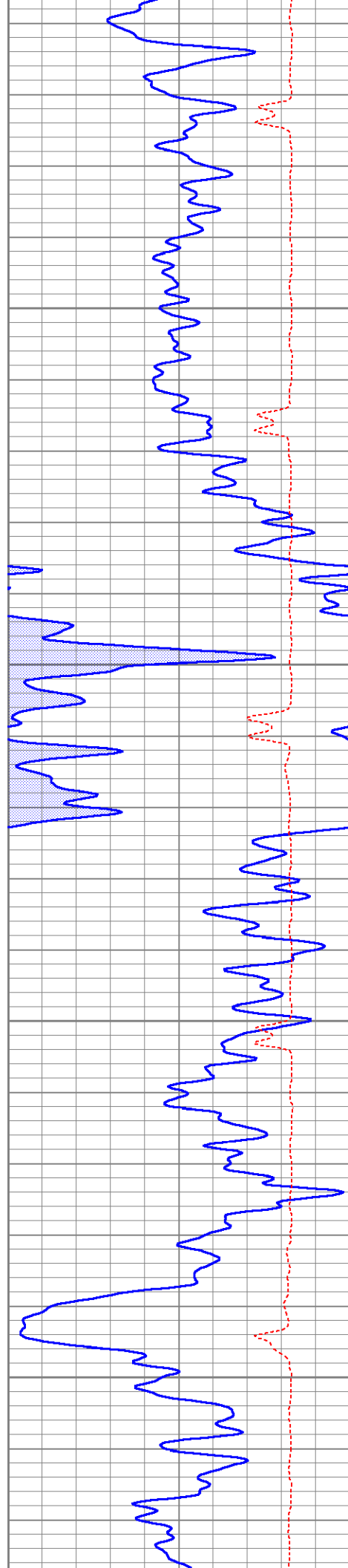










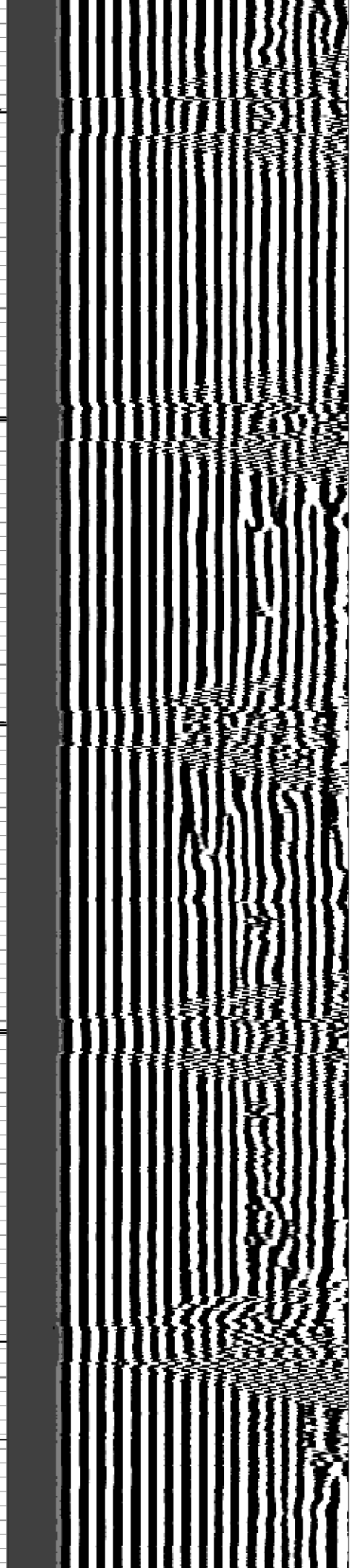
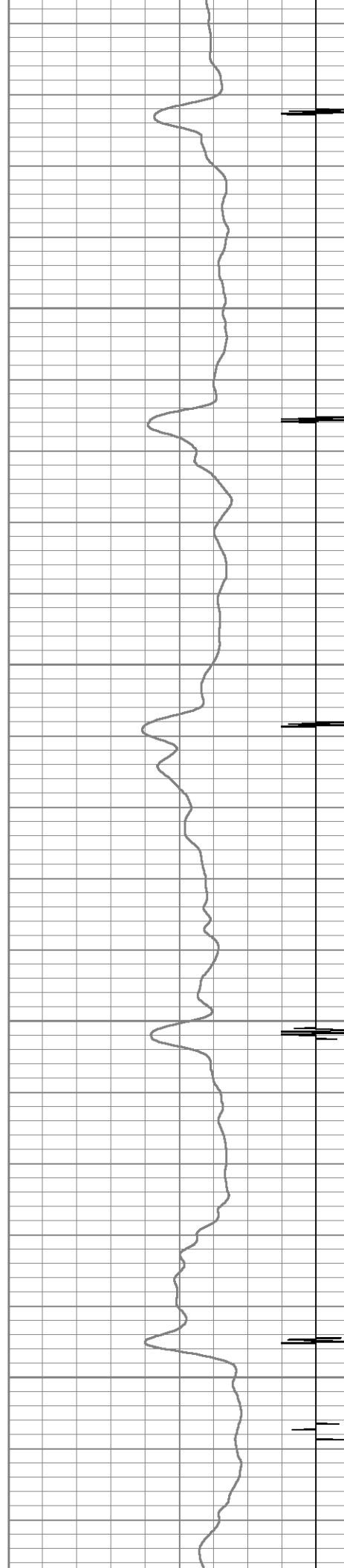


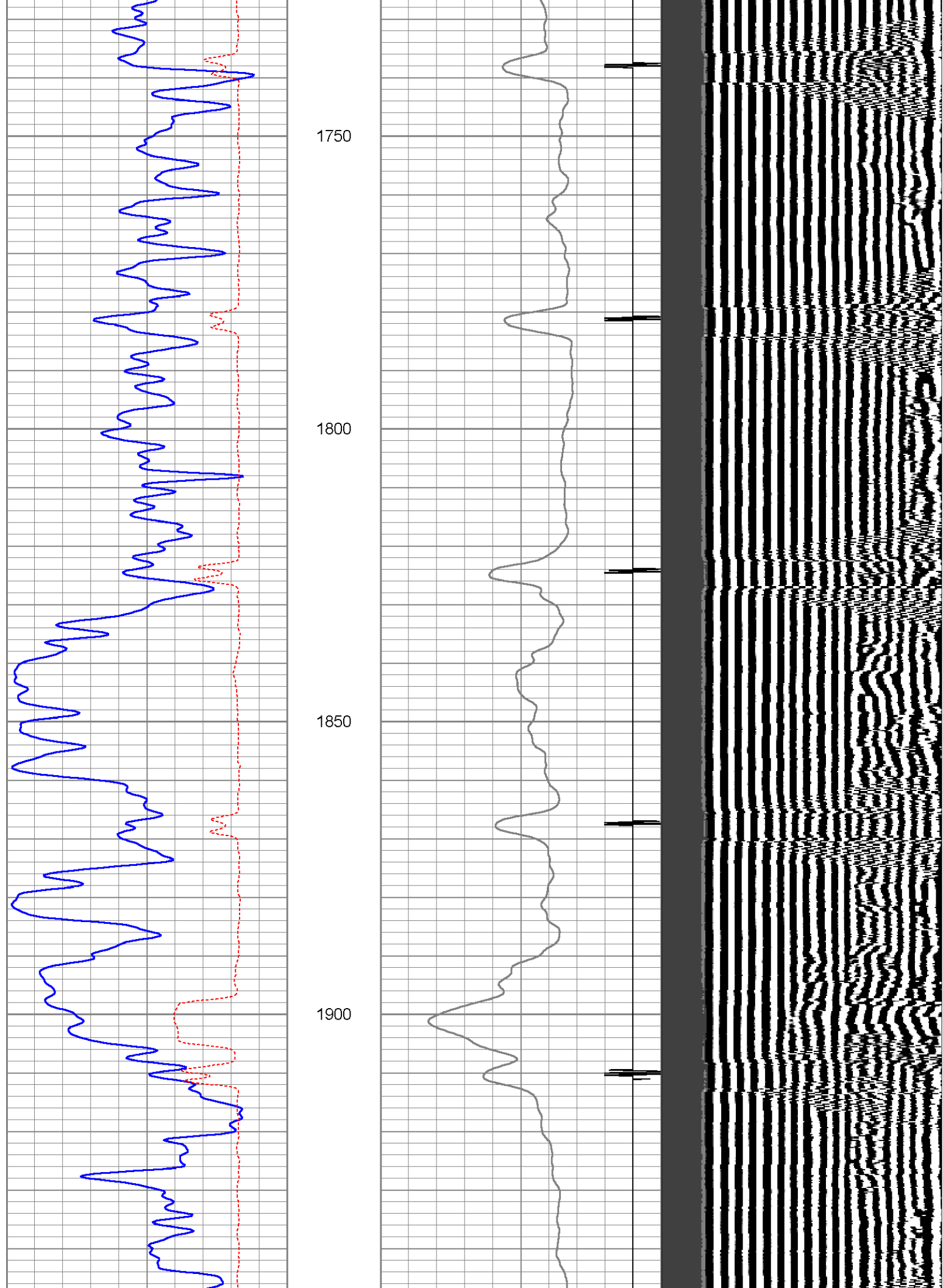
1550

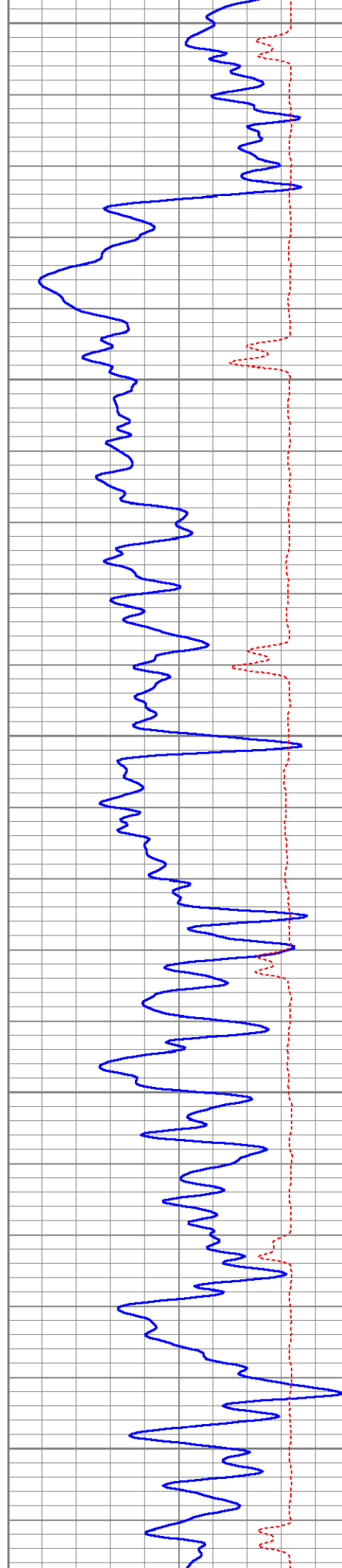
1600

1650

1700







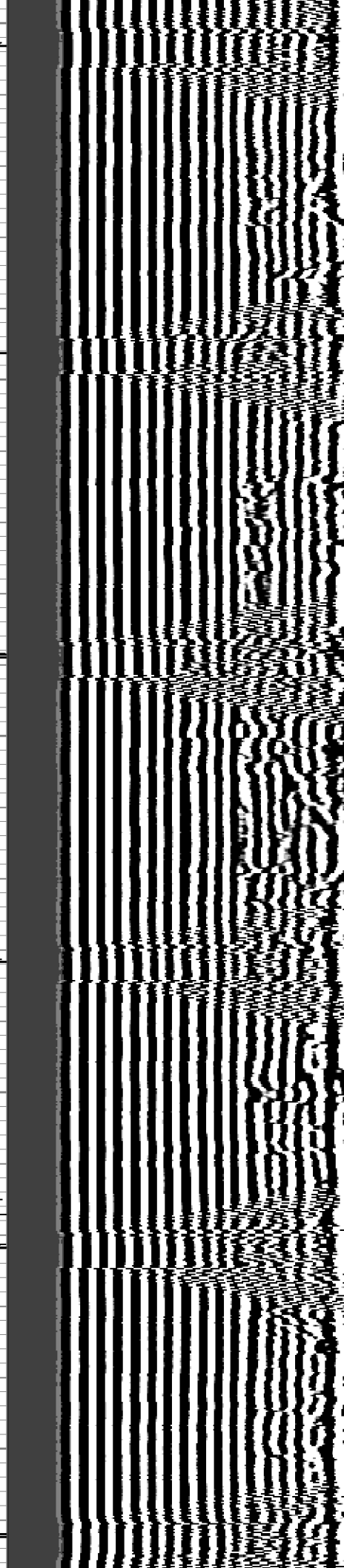
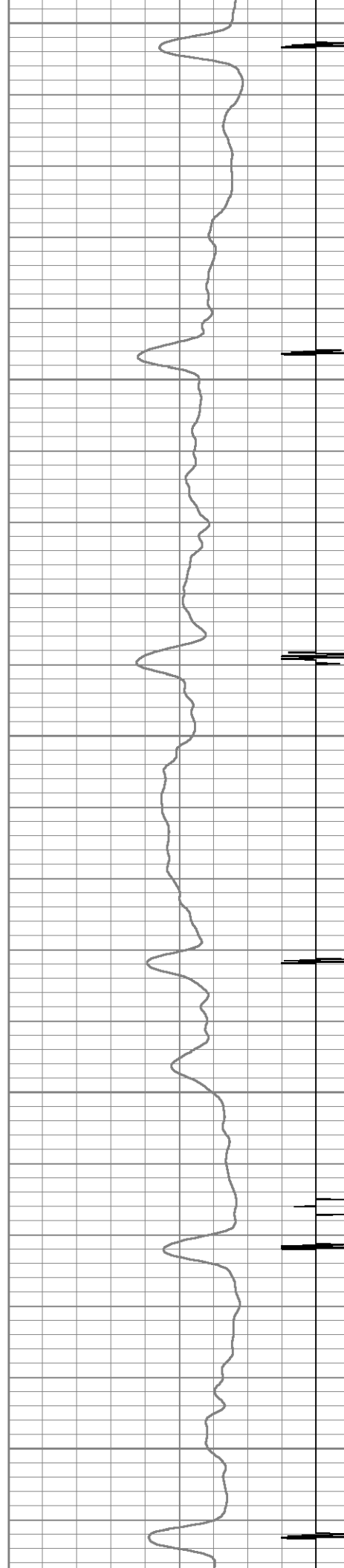
1950

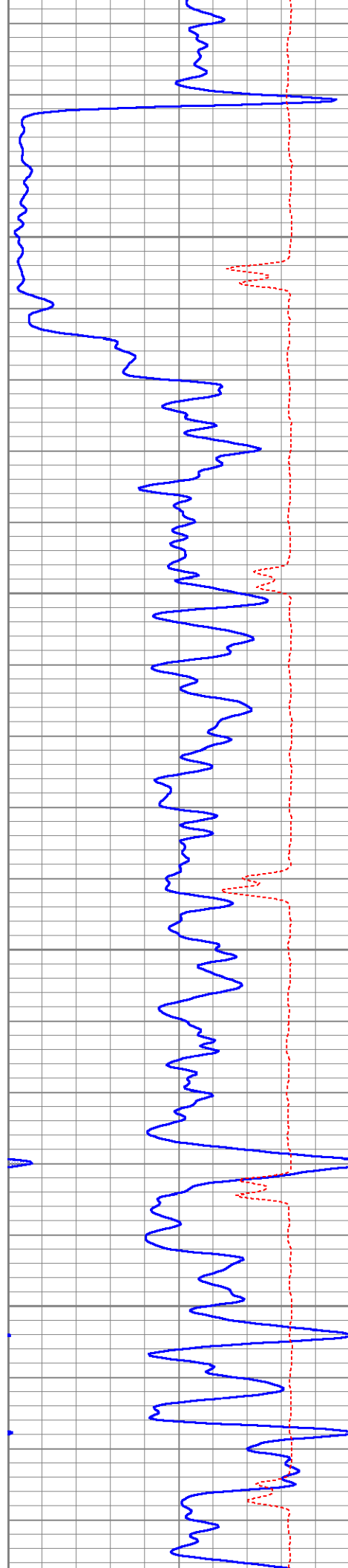
2000

2050

2100

2150



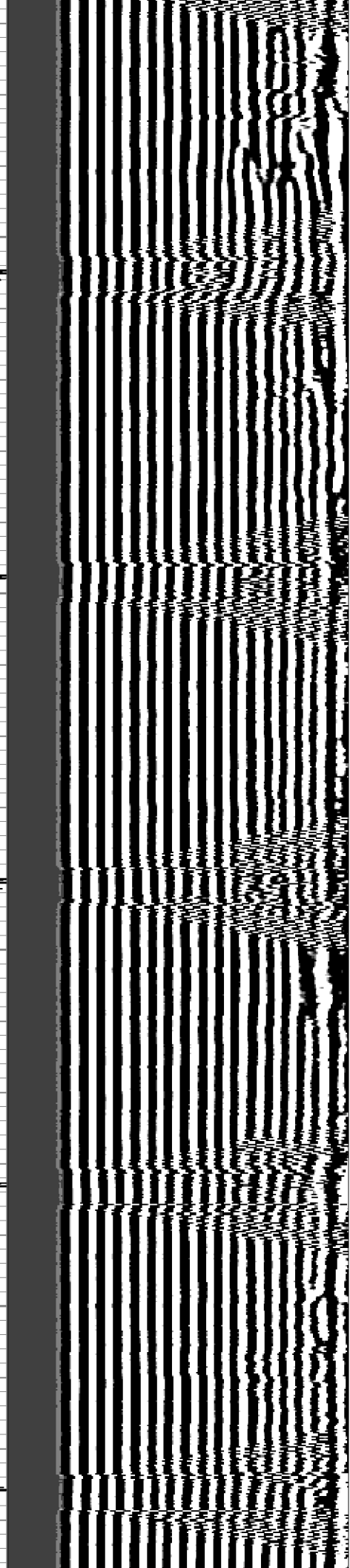
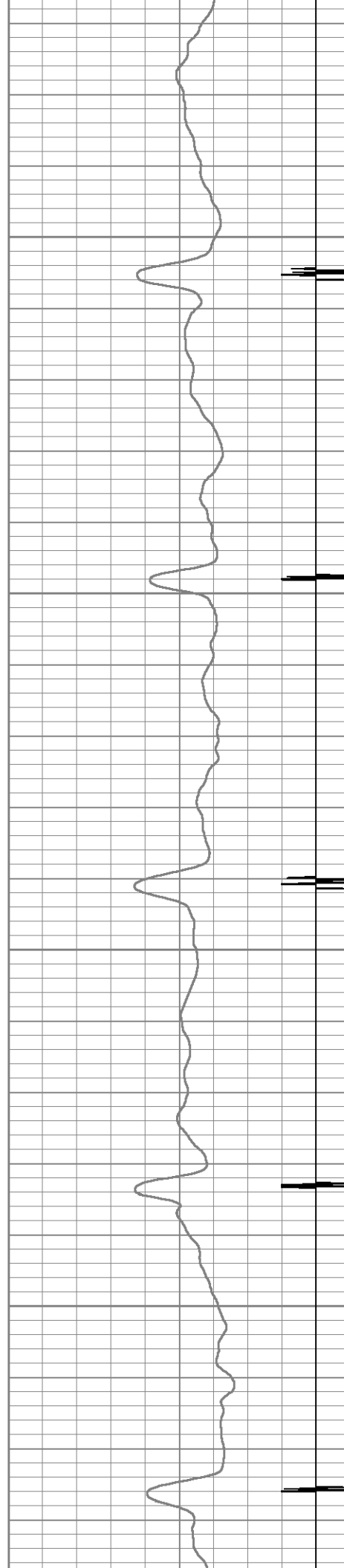


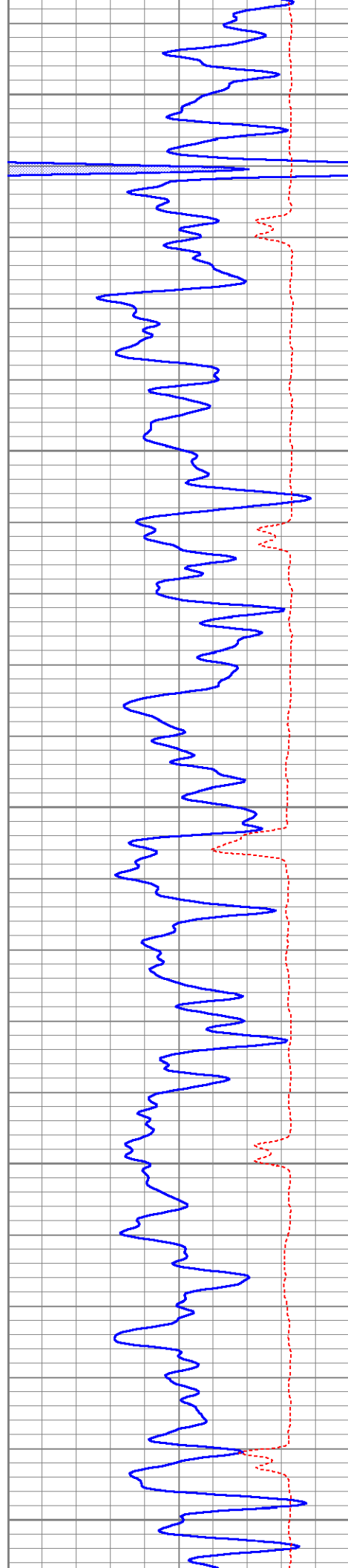
2200

2250

2300

2350





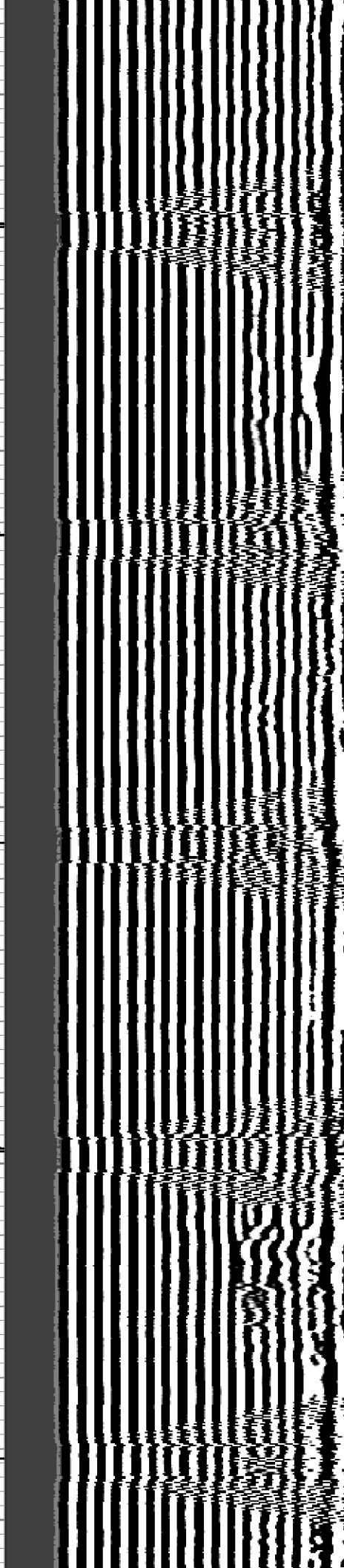
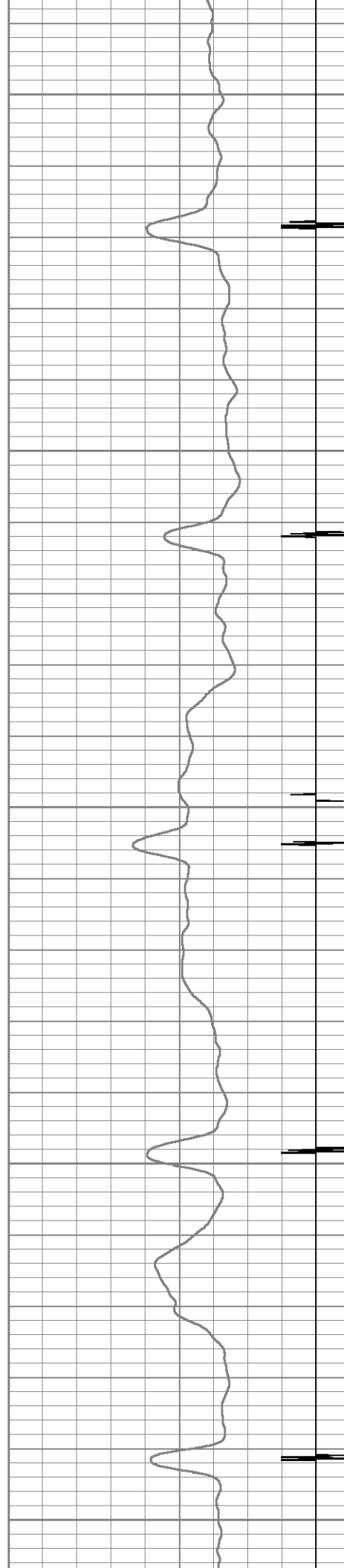
2400

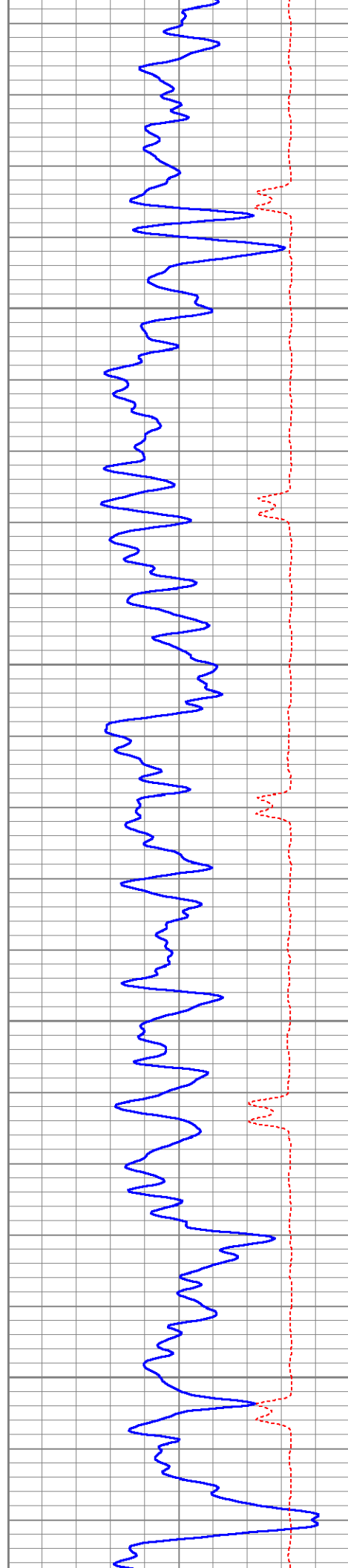
2450

2500

2550

2600



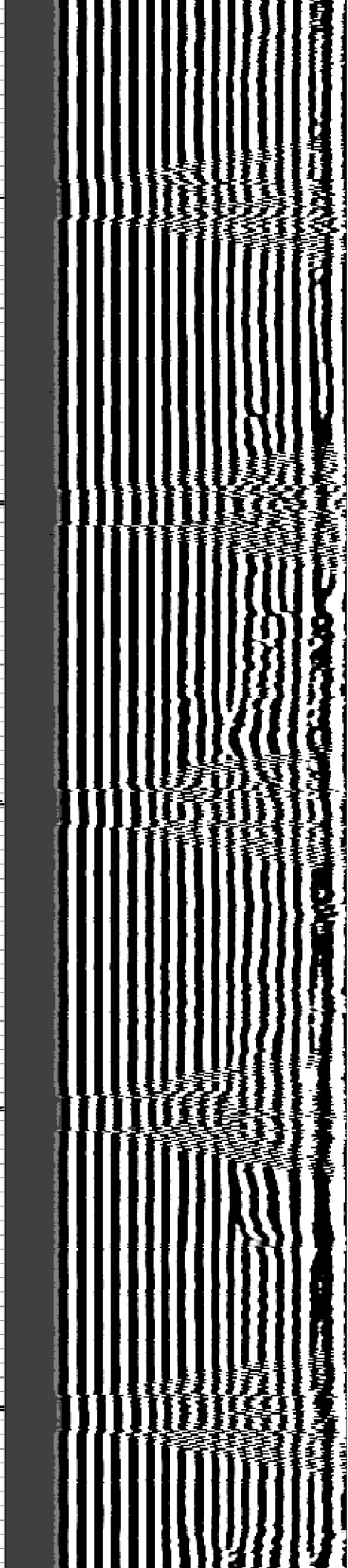
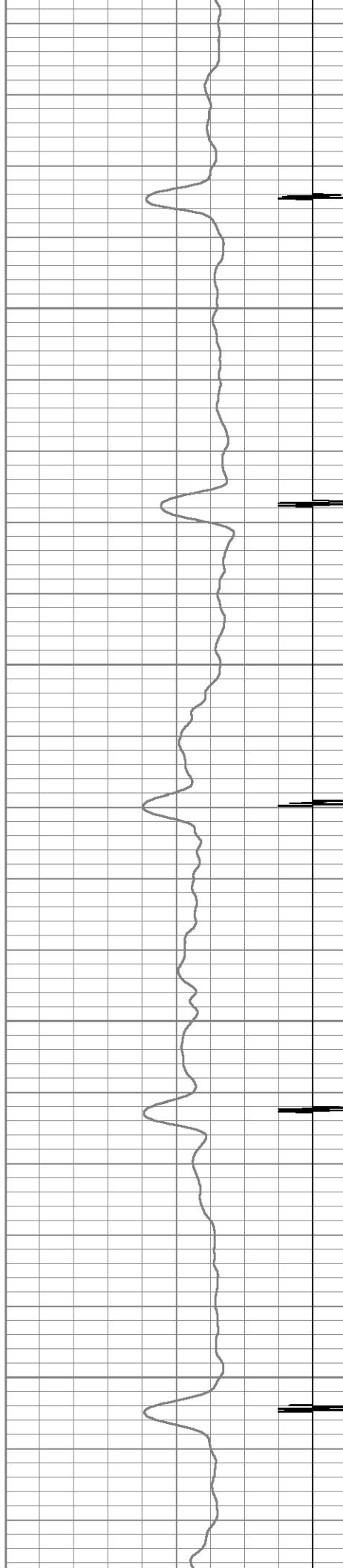


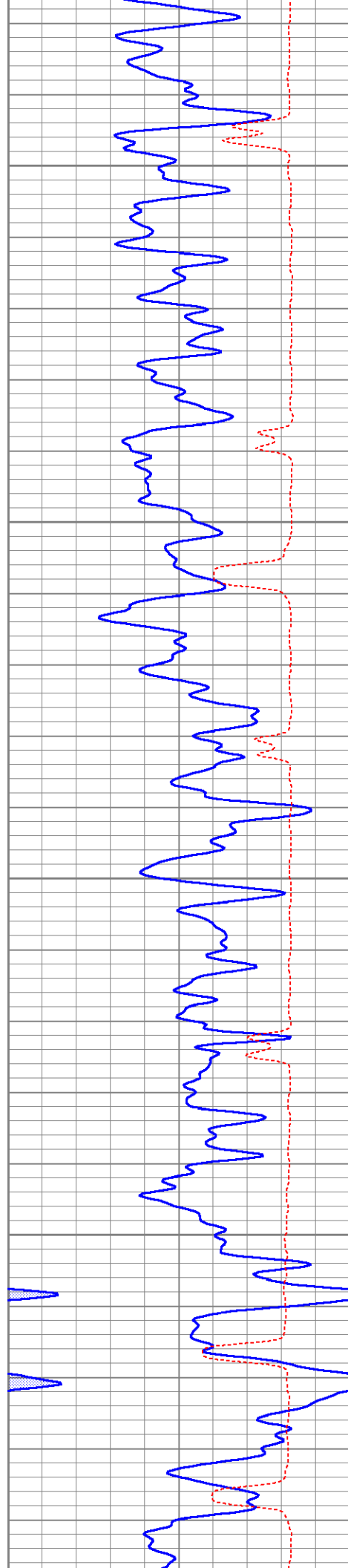
2650

2700

2750

2800



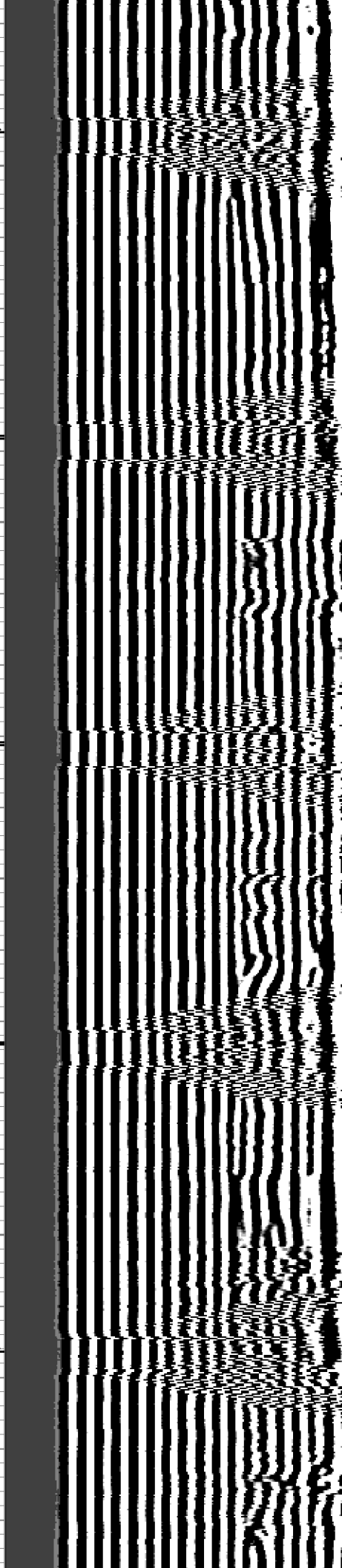
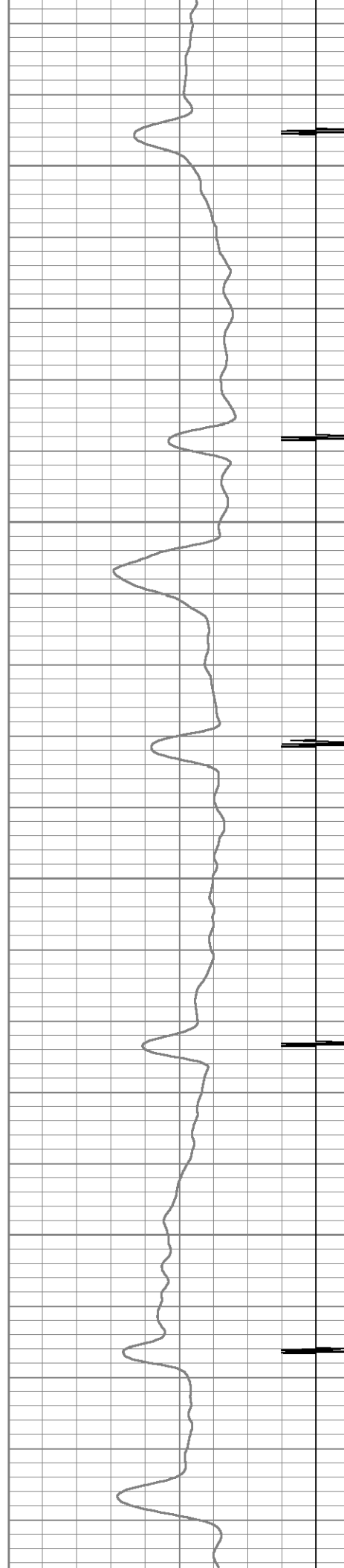


2850

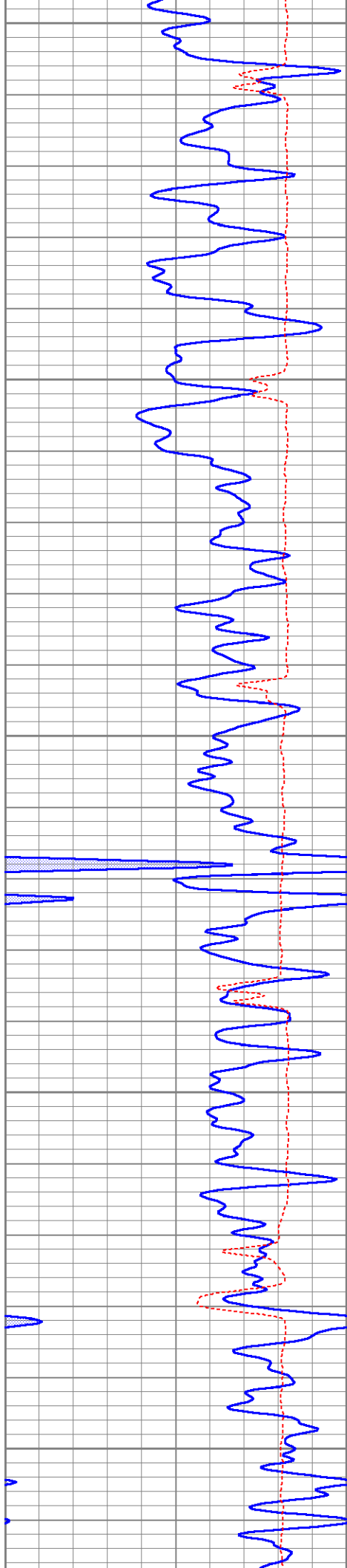
2900

2950

3000







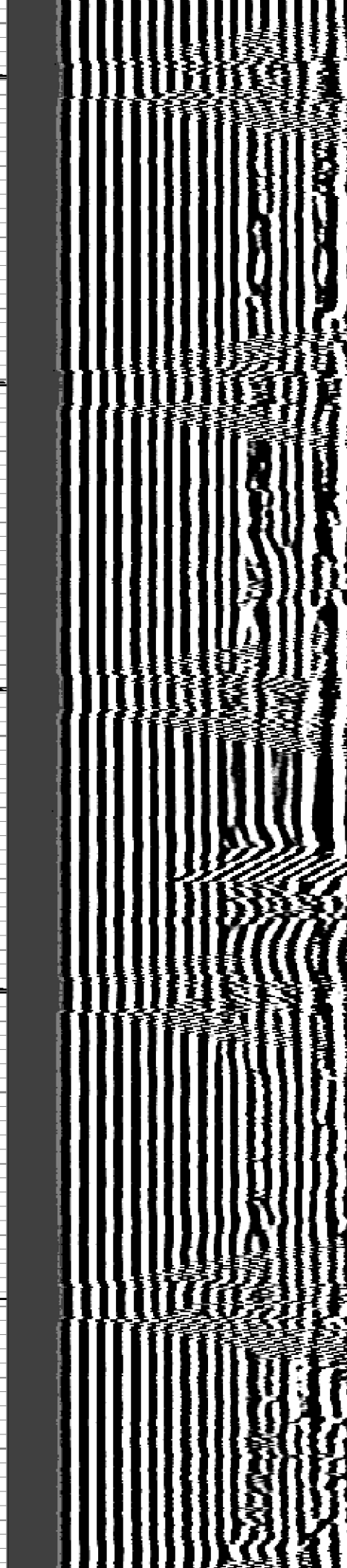
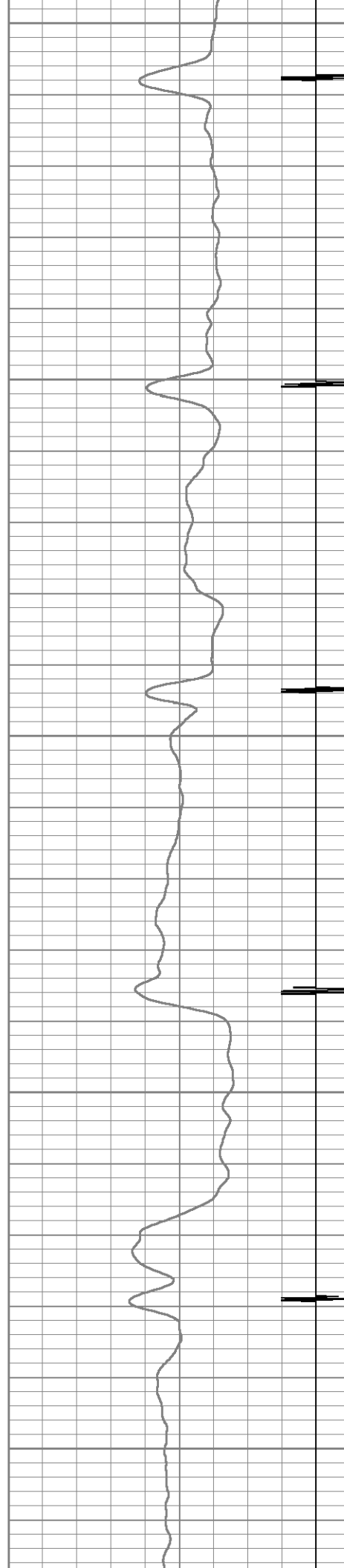
3050

3100

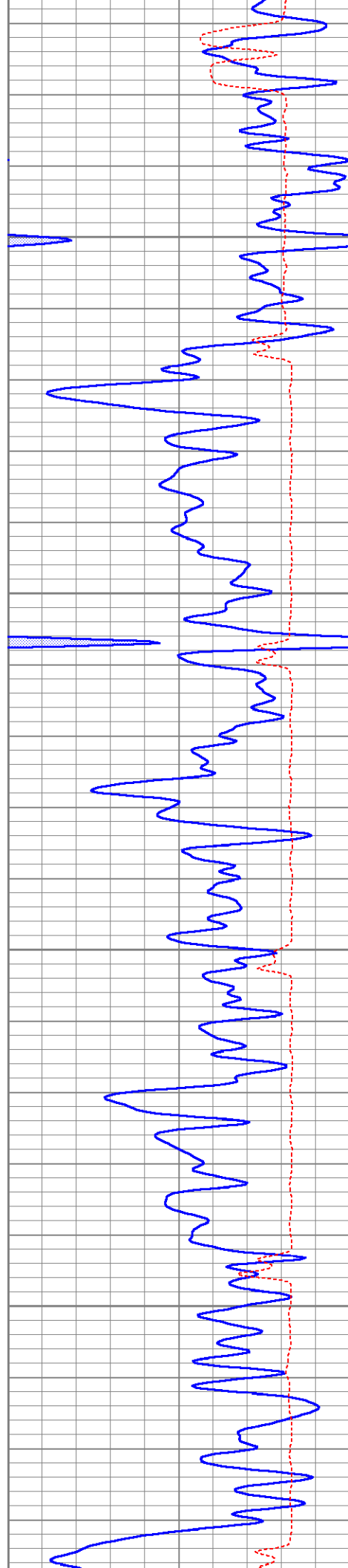
3150

3200

3250





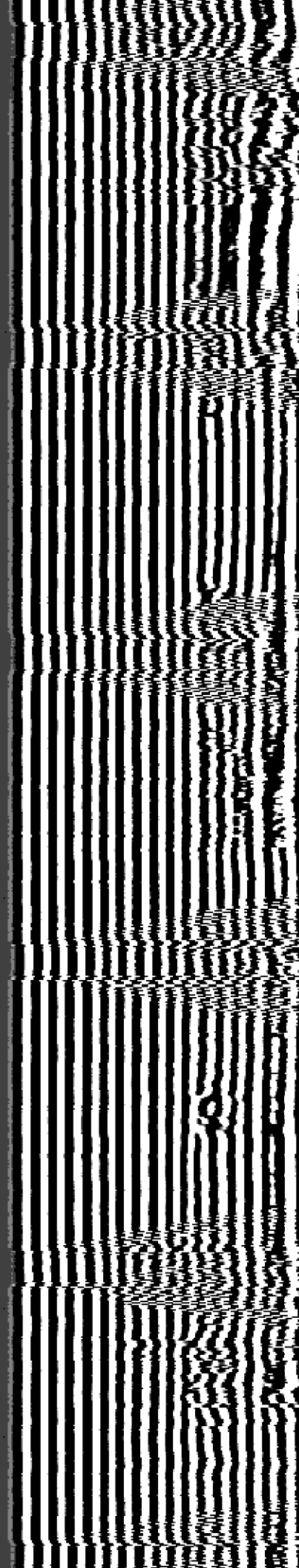
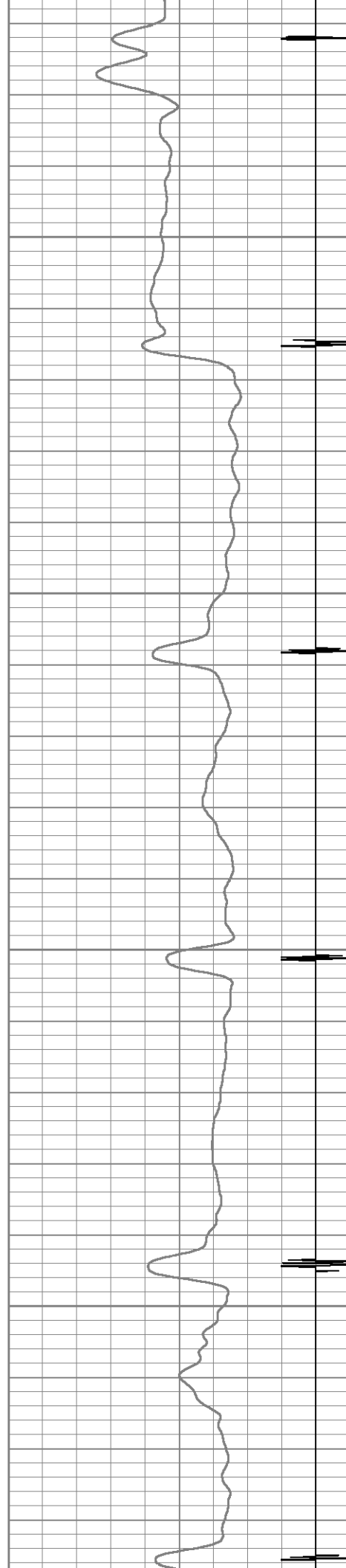


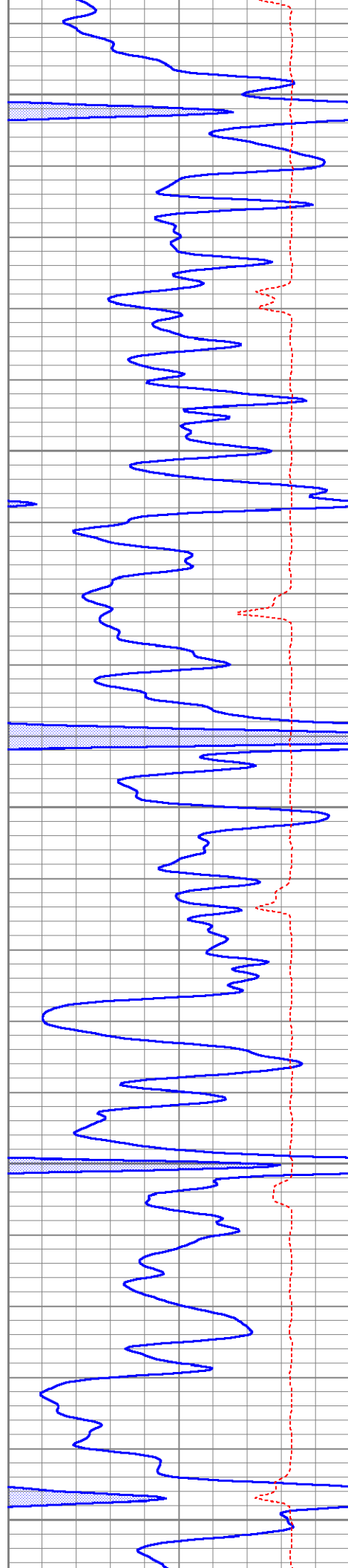
3300

3350

3400

3450





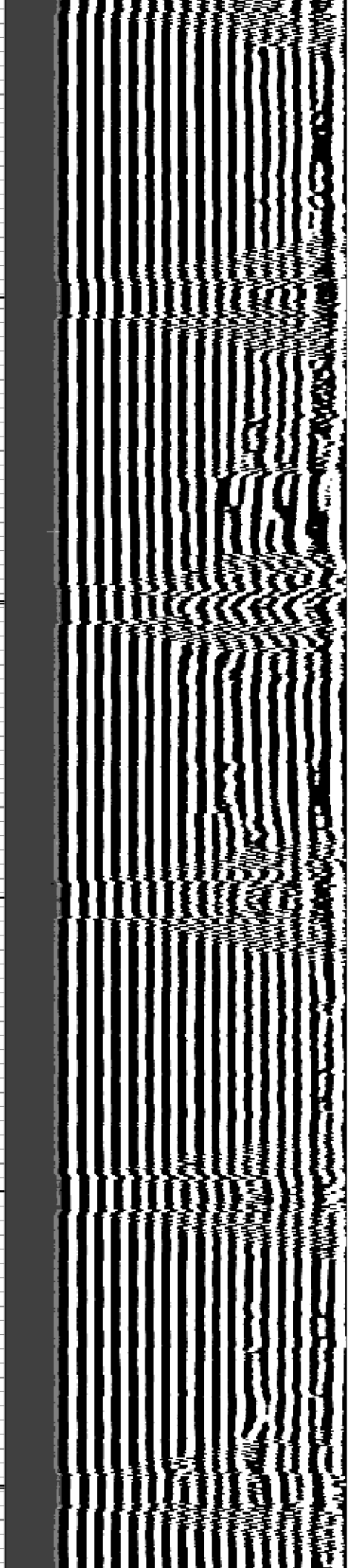
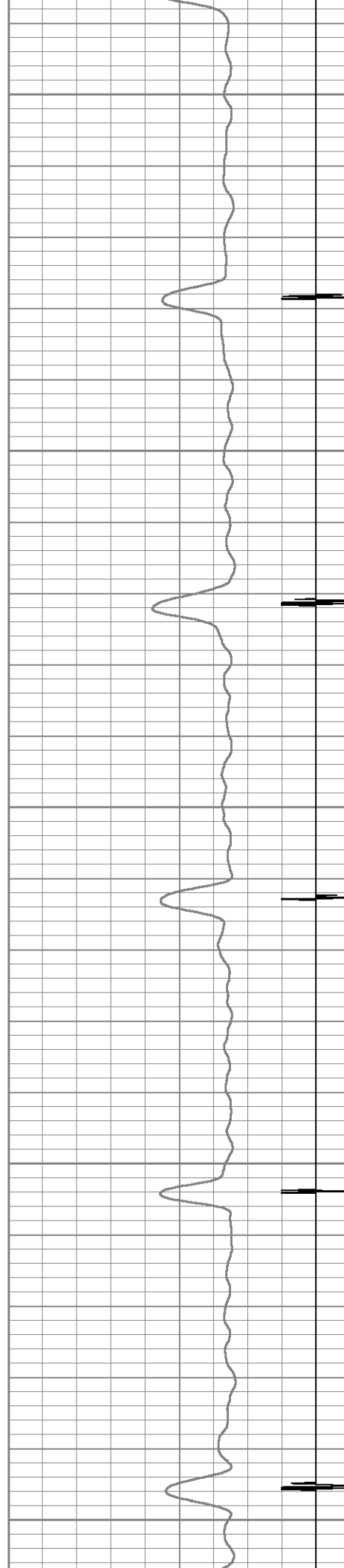
3500

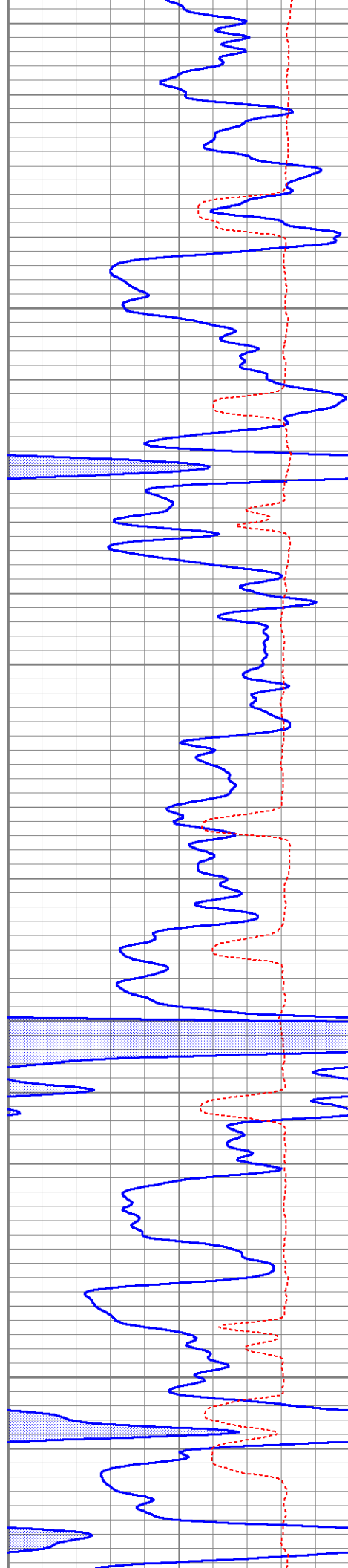
3550

3600

3650

3700



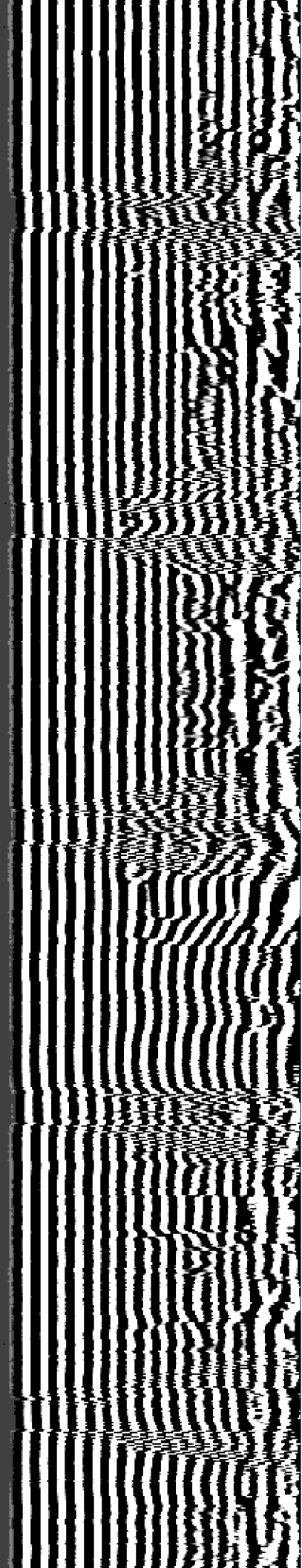
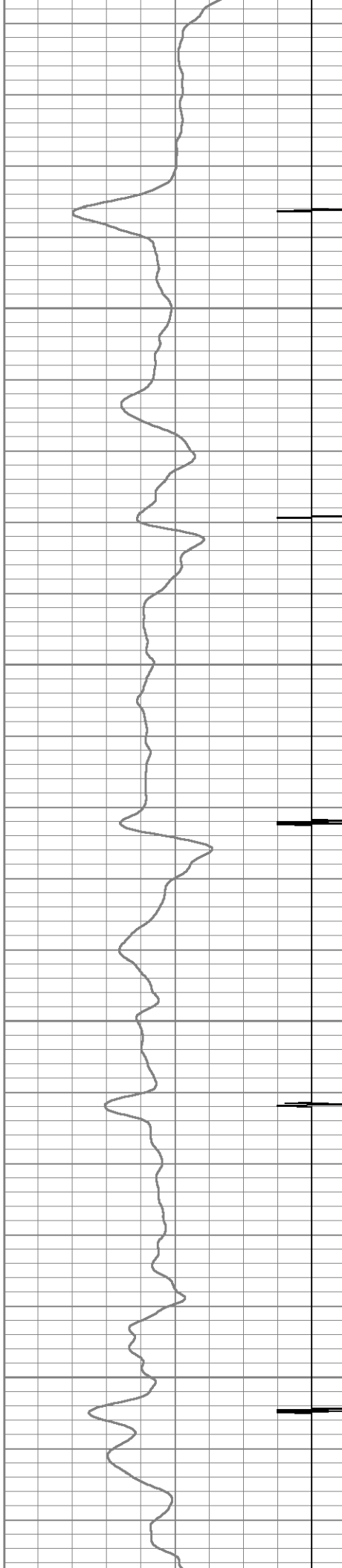


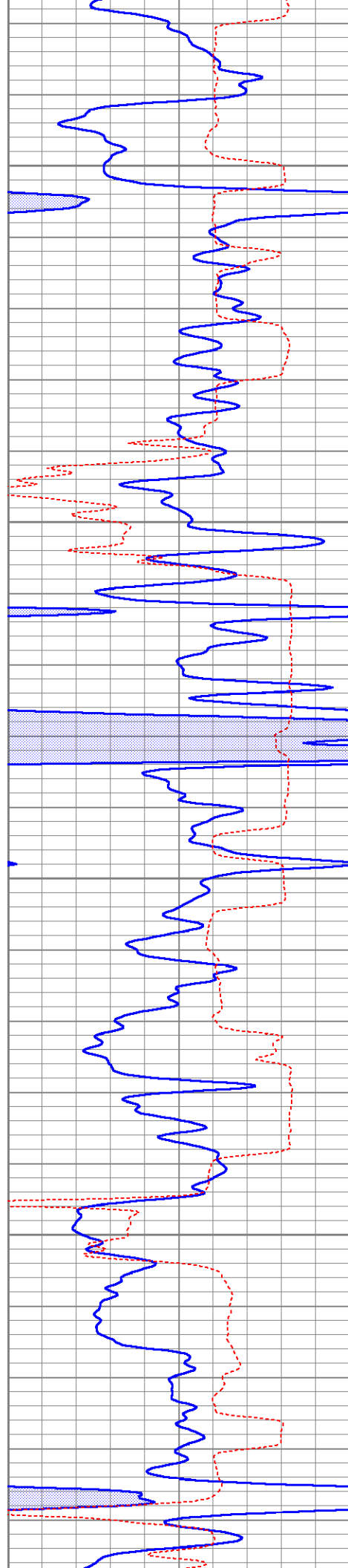
3750

3800

3850

3900



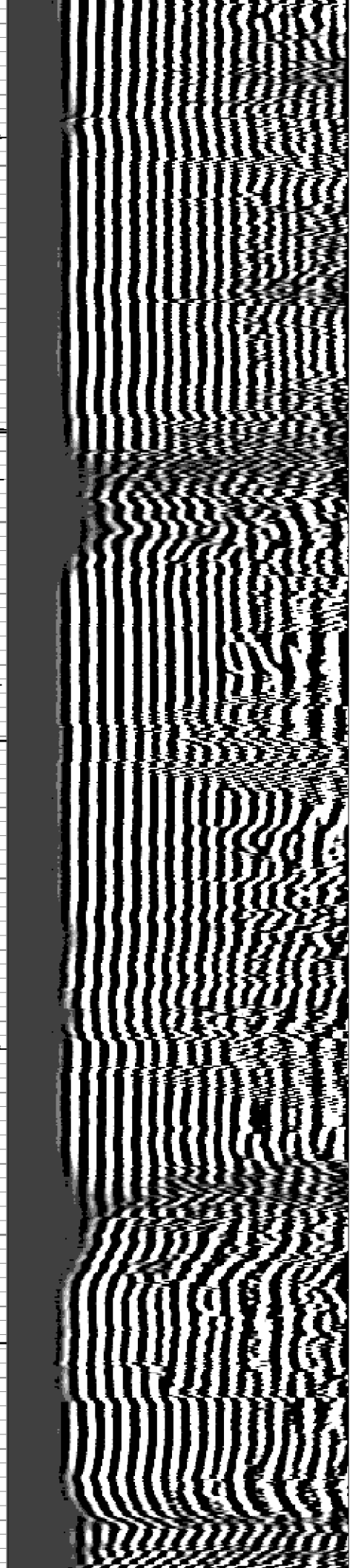


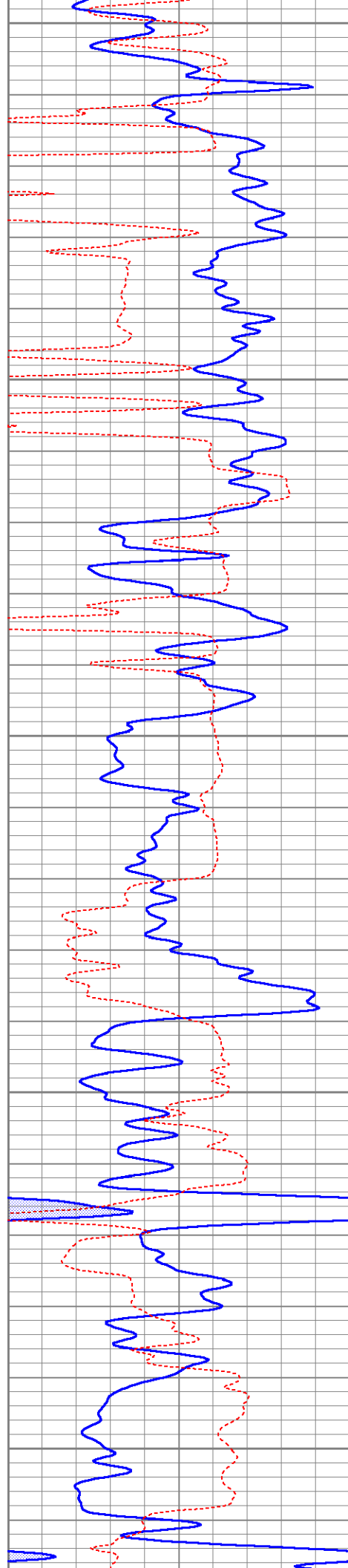
3950

4000

4050

4100





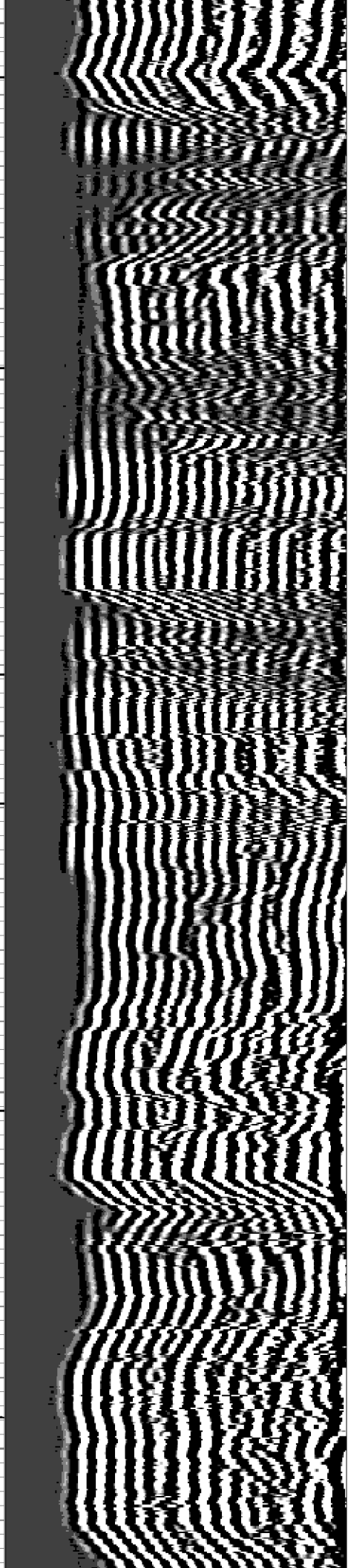
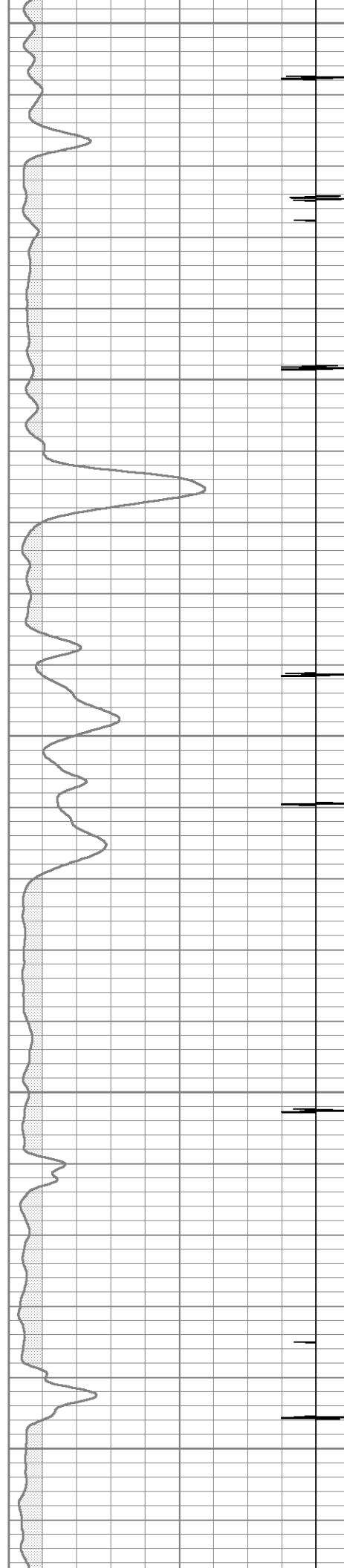
4150

4200

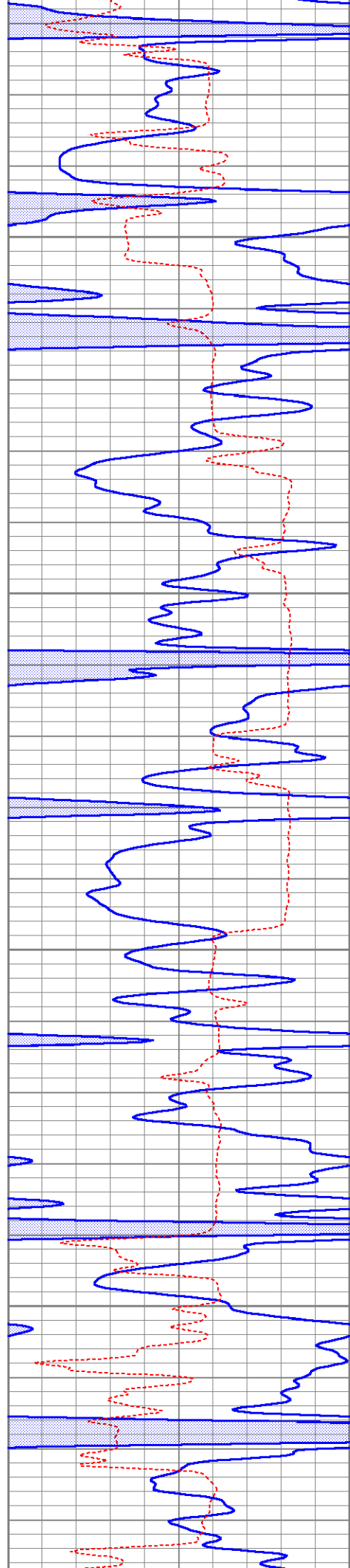
4250

4300

4350





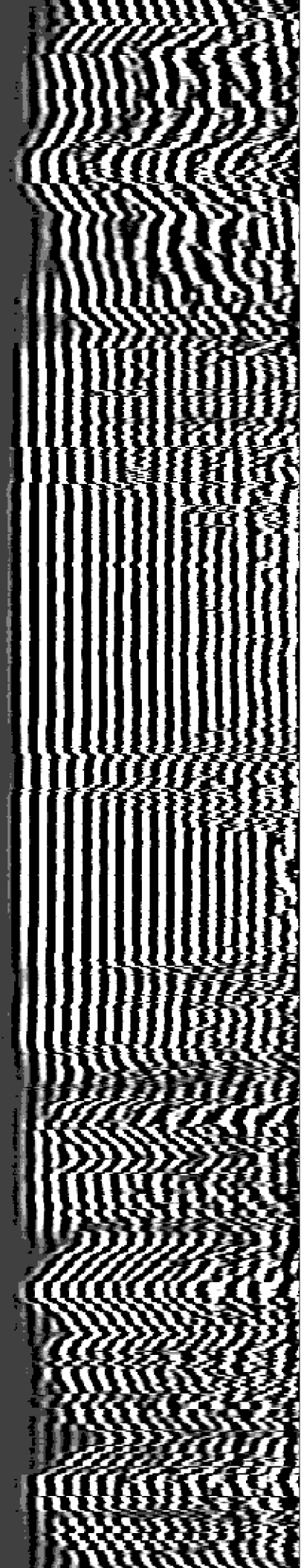
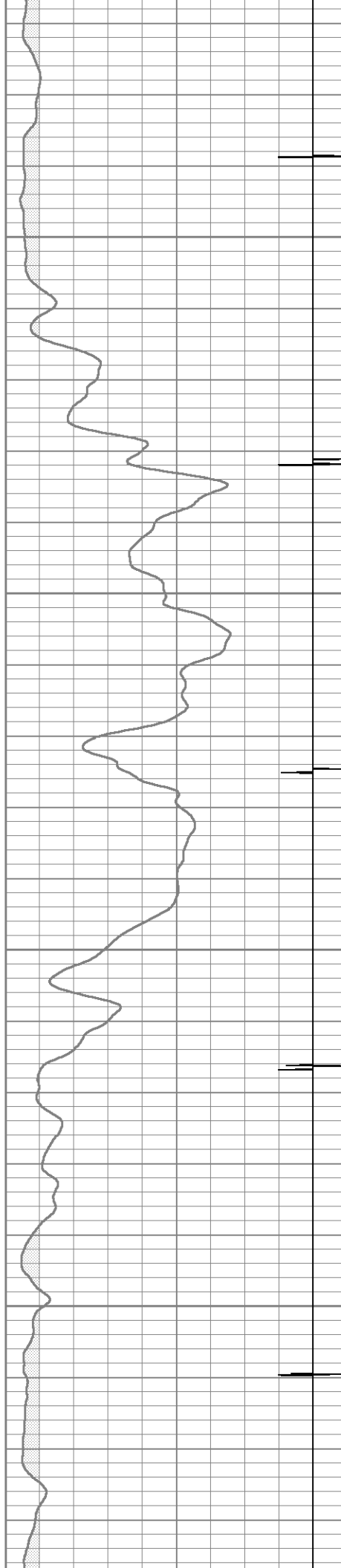


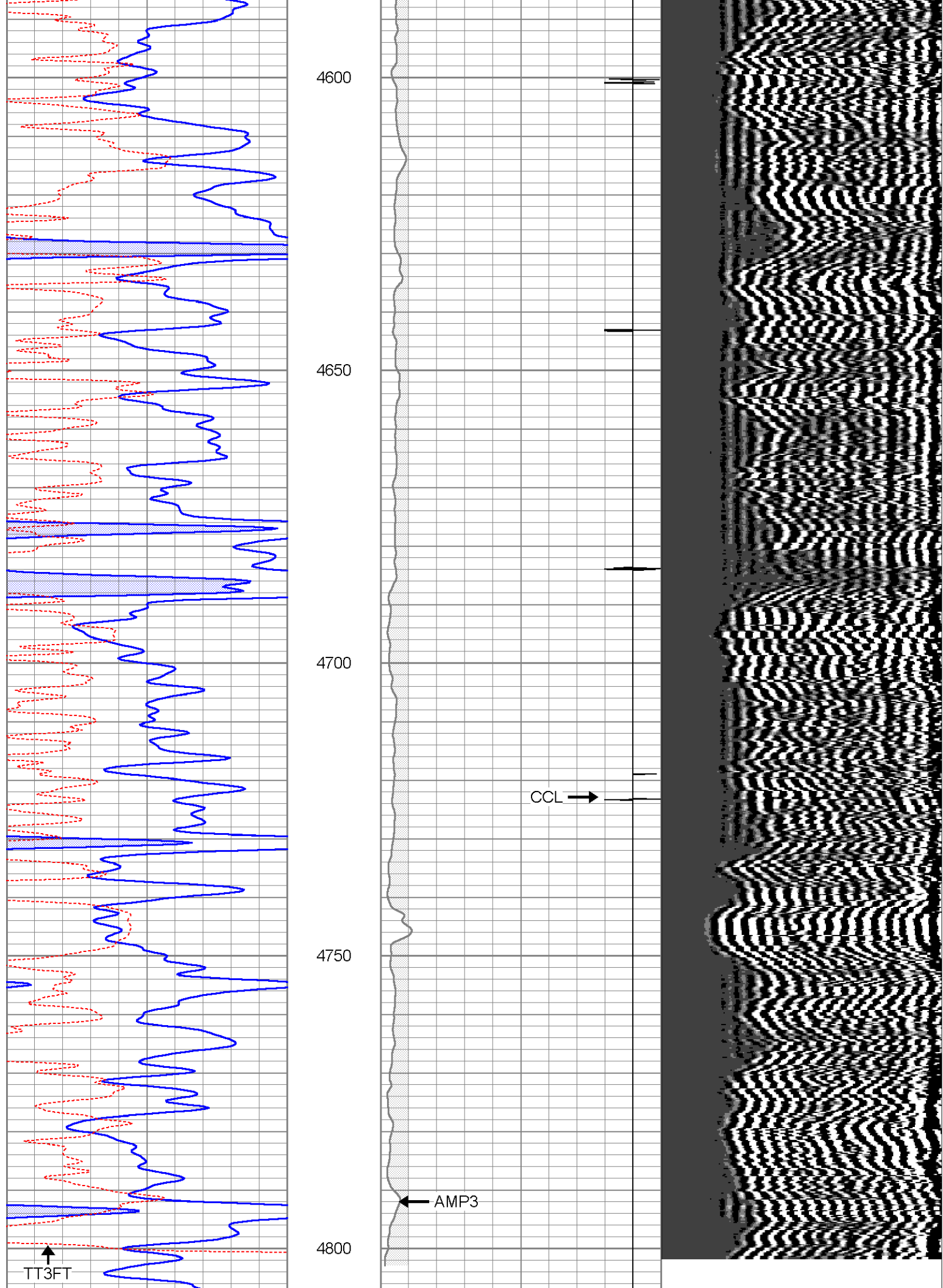
4400

4450

4500

4550





0	GR (GAPI)	150	18	CCL	-2	200	VDL	1200
150	GR (GAPI)	300	0	AMP3 (mV)	100			
420	TT3FT (usec)	220						

### Calibration Report

Database File: weirich32-33psicbl.db  
Dataset Pathname: pass2  
Dataset Creation: Wed Oct 30 13:46:48 2013 by Log Open-Cased 071220

### Gamma Ray Calibration Report

Serial Number: 080224  
Tool Model: Probe1  
Performed: Thu Sep 27 07:34:48 2012

Calibrator Value: 200.0 GAPI

Background Reading: 15.0 cps  
Calibrator Reading: 222.7 cps

Sensitivity: 0.9629 GAPI/cps

### Cement Bond Log Calibration Report

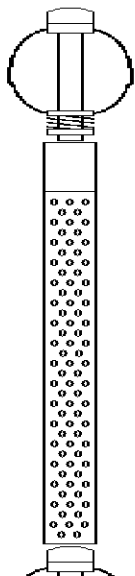
Serial Number: 061007  
Tool Model: DigitalCBL  
Performed: Wed Oct 30 13:12:30 2013

Depth: 1860.17 ft  
Casing Diameter: 5.5 in

3' Spacing 5' Spacing

Signal Zero: 2 0 mV  
Calibrated Amplitude: 71.921 71.921 mV  
Reading at Signal Zero: 0.00632324 0.00632324 V  
Reading in Free Pipe: 0.86 0.736694 V

Gain: 81.9057 98.4719  
Offset: 1.48209 -0.622661

Sensor	Offset (ft)	Schematic	Description	Len (ft)	OD (in)	Wt (lb)
			275 2 3/4" Centralizer	2.94	2.75	10.00
WVF3	11.69		Probedig-DigitalCBL (061007)	8.77	2.75	92.00
WVF5	10.69		2 3/4 Bond Tool			



