



DEPTH SCALE: 5":100'

PROCESSED VERSION: 2012.07.18.162"

## MAIN PASS

91510673 PNDMF

FINISH DEPTH: 2901.7 Feet DIRECTION: UP DATE: 07/02/2014 TIME: 16:22 MODE: ORIGINAL  
RECOMPUTED DATE: 07/02/2014 TIME: 16:22

### Collar Locator

-9000 Millivolts 1000

### Gamma Ray

0 API 200

### OUTPUT QUALITY

0.0 200000.0

### BGD FAR

0.0 3000.0

### BGD NEAR

0.0 30000.0

### Tension

0 2000

### Ratio Inel N to F

-1.0 14.0

### Formation Ratio

6.0 1.0

### FAR 1

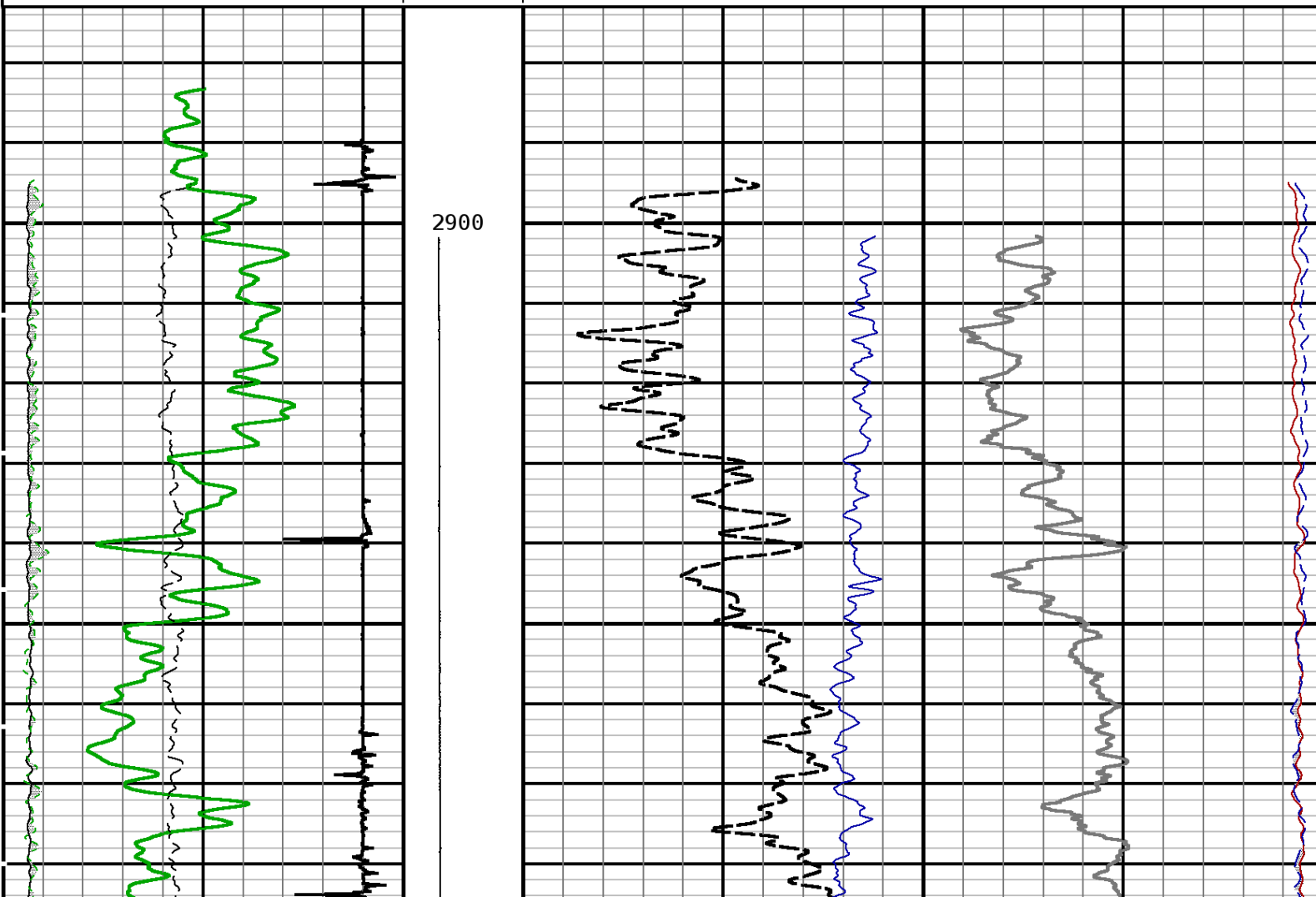
40.0 Counts/Second 0.0

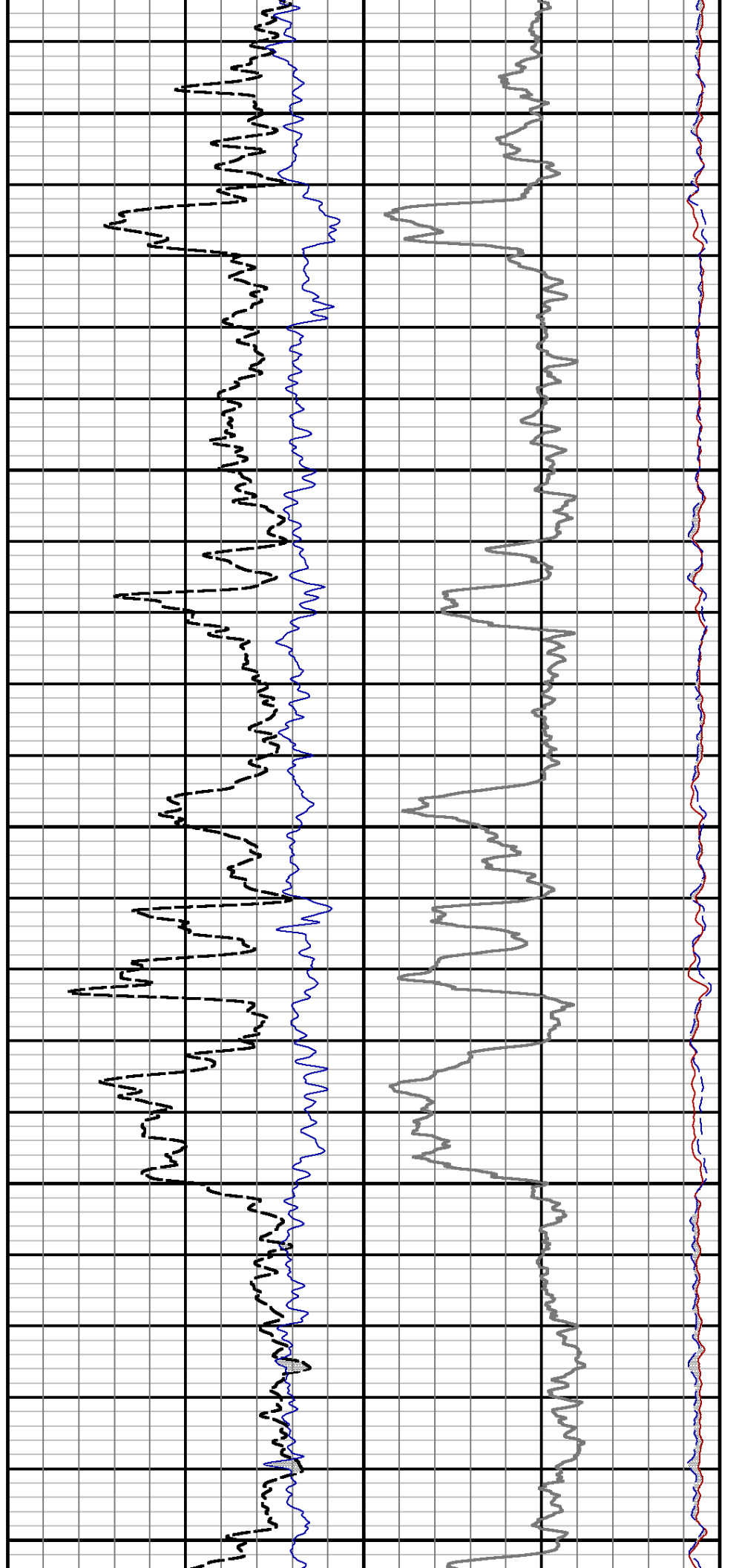
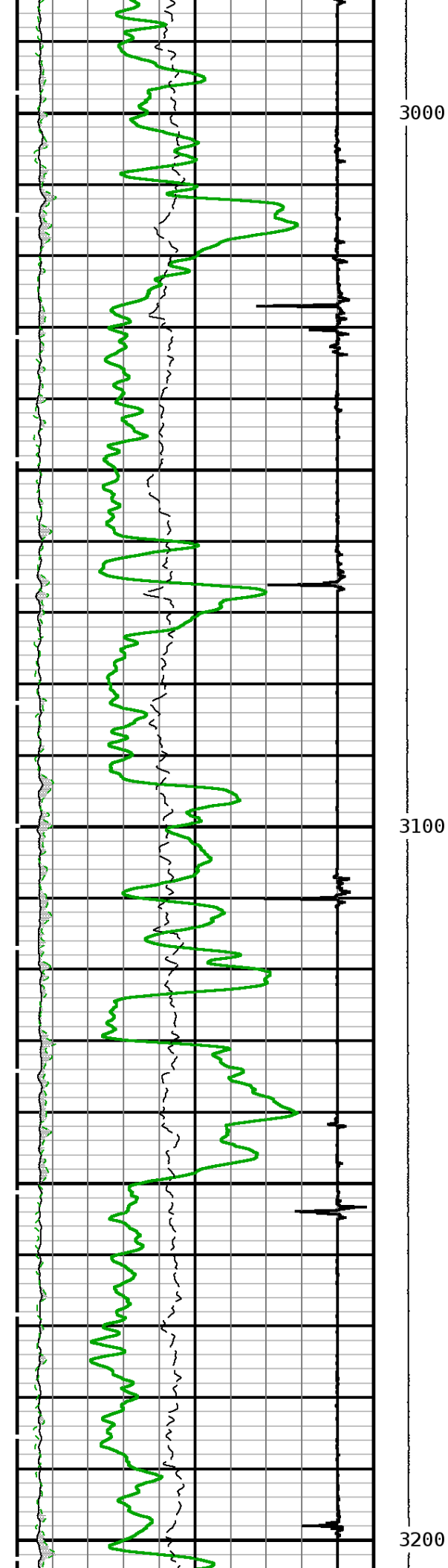
### NEAR 1

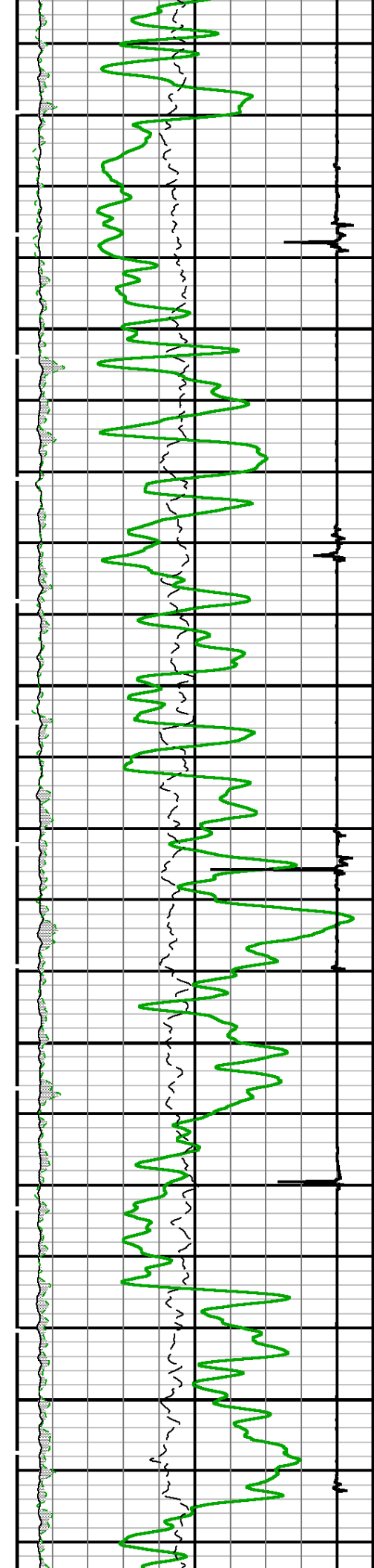
240.0 Counts/Second 0.0

### Formation Sigma

60.0 0.0

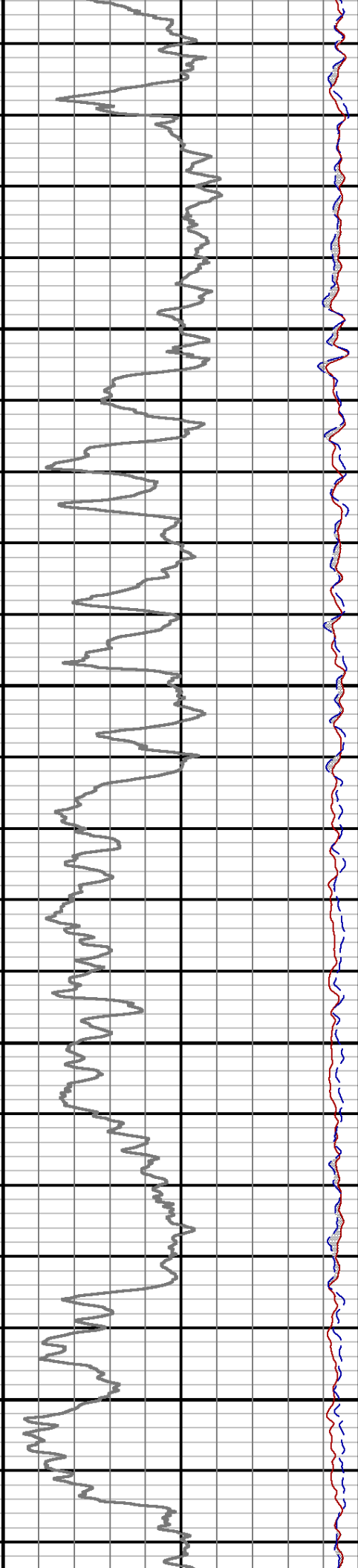
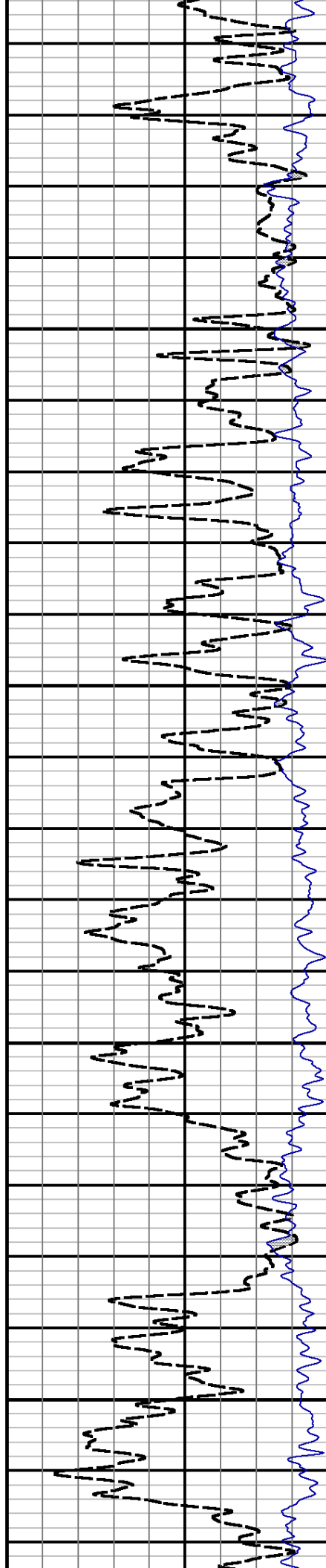


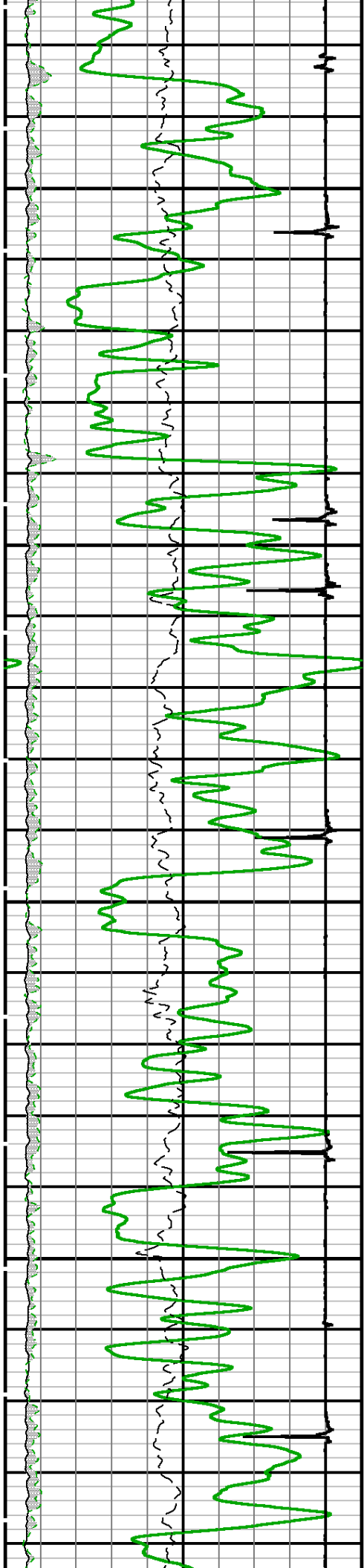




3300

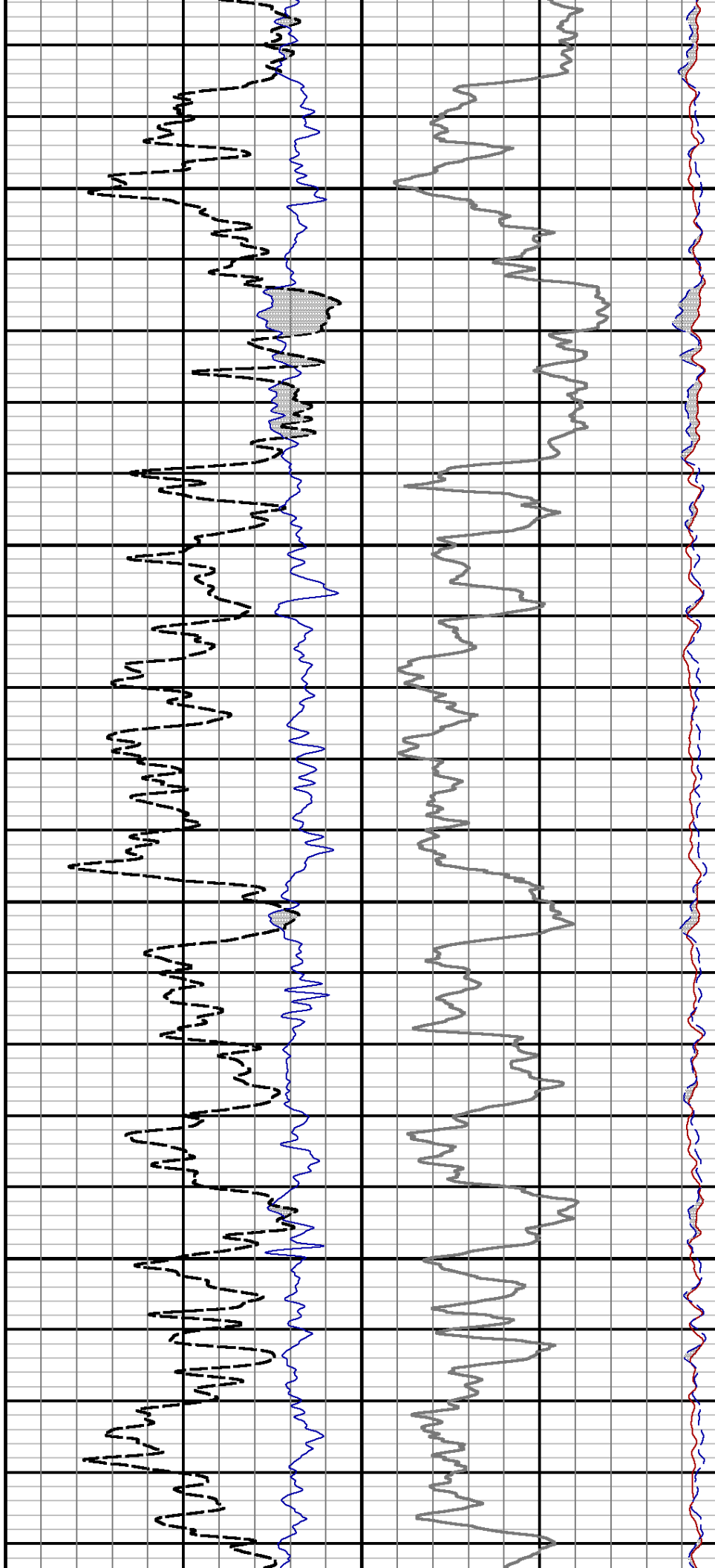
3400

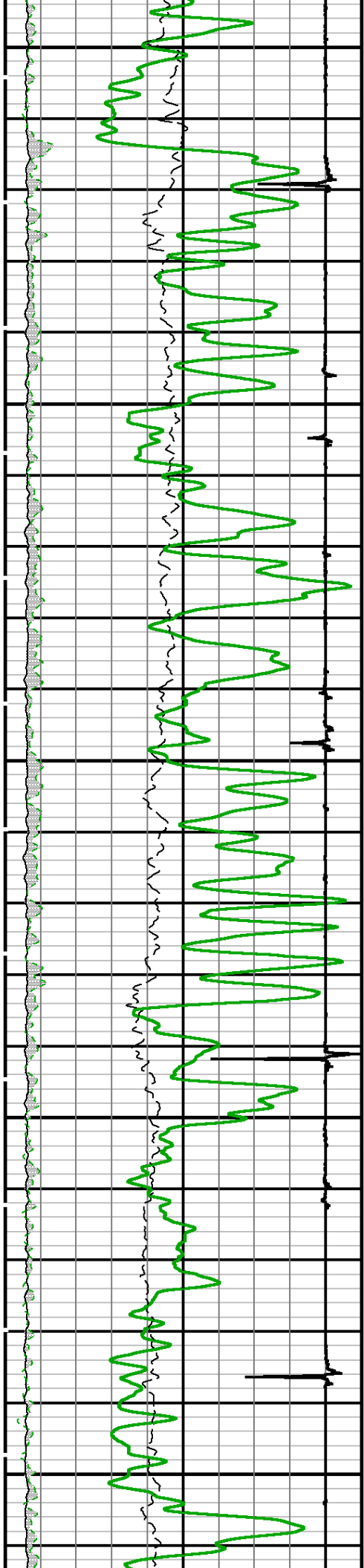




3500

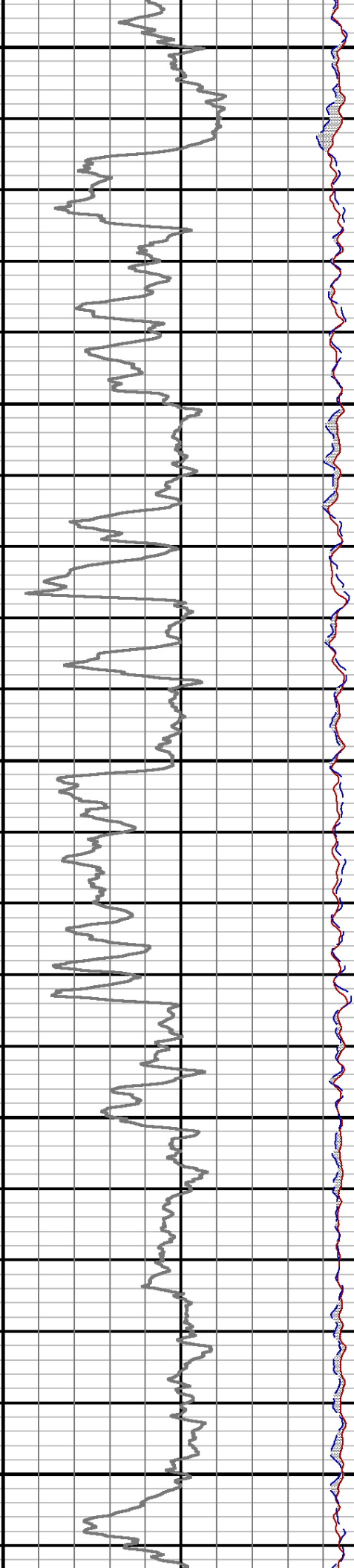
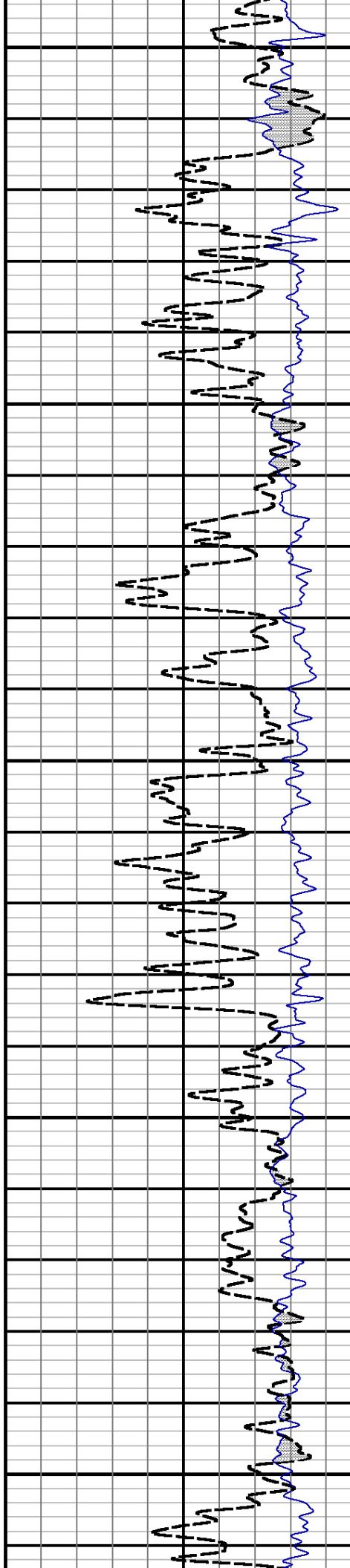
3600

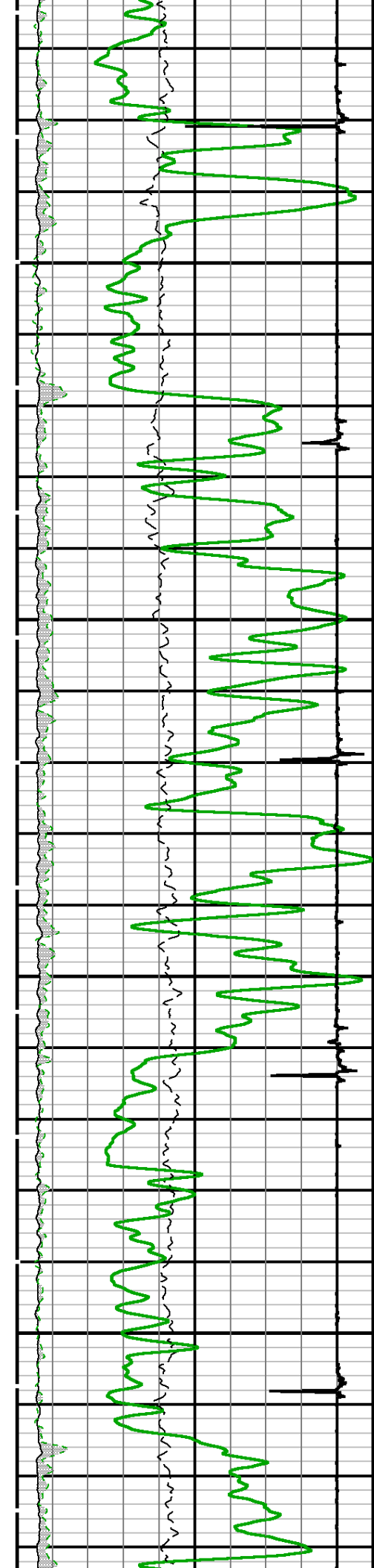




3700

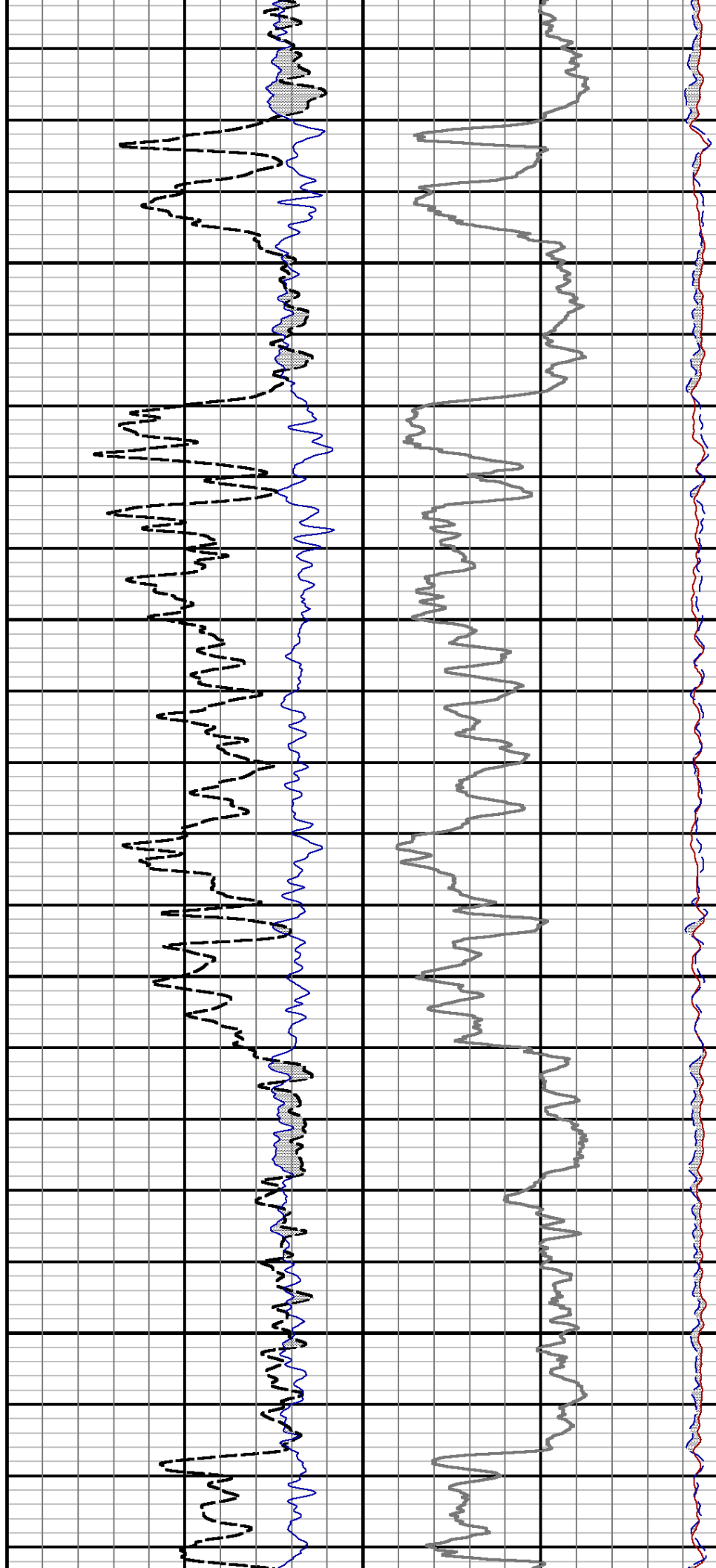
3800

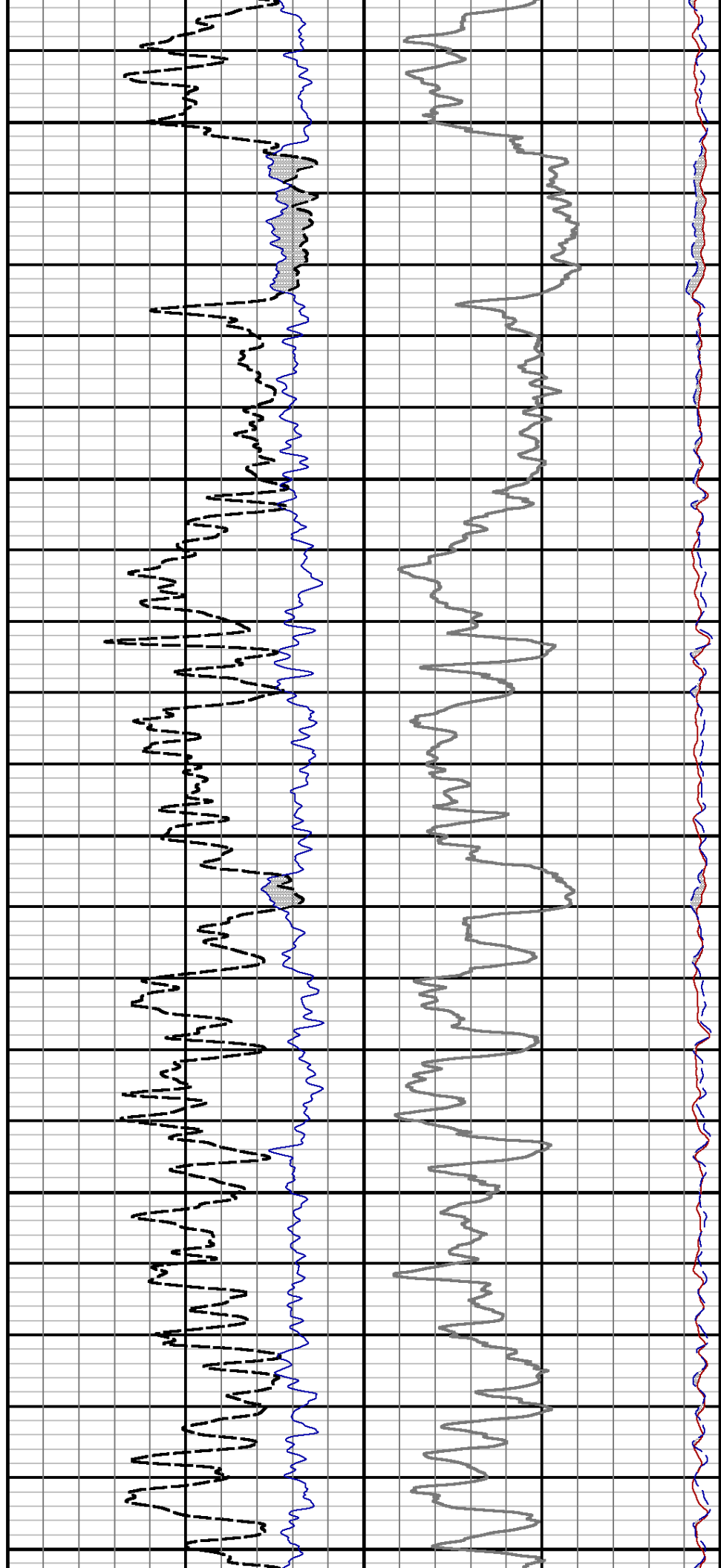
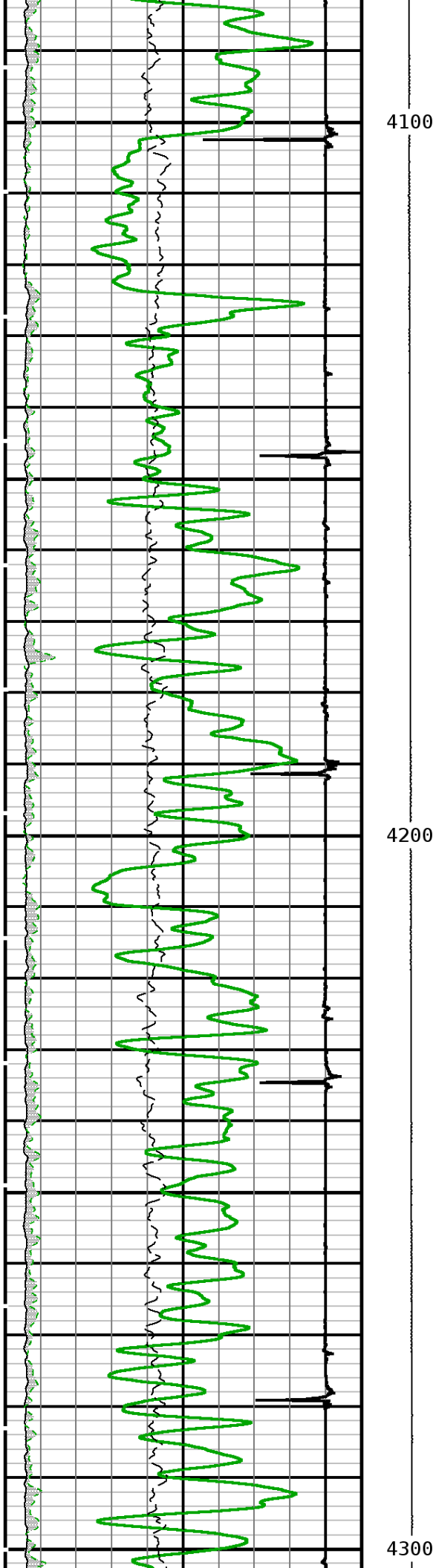




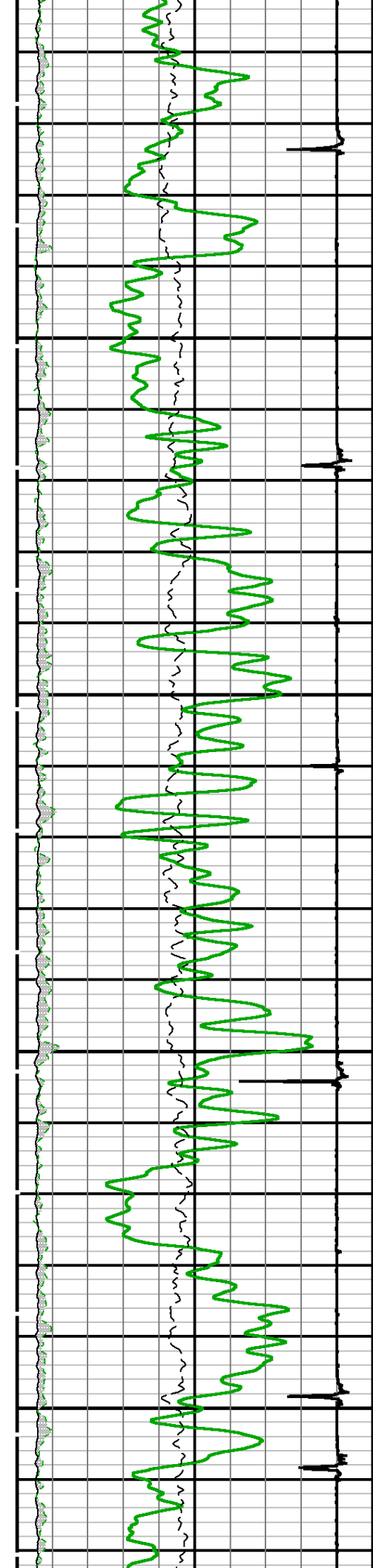
3900

4000



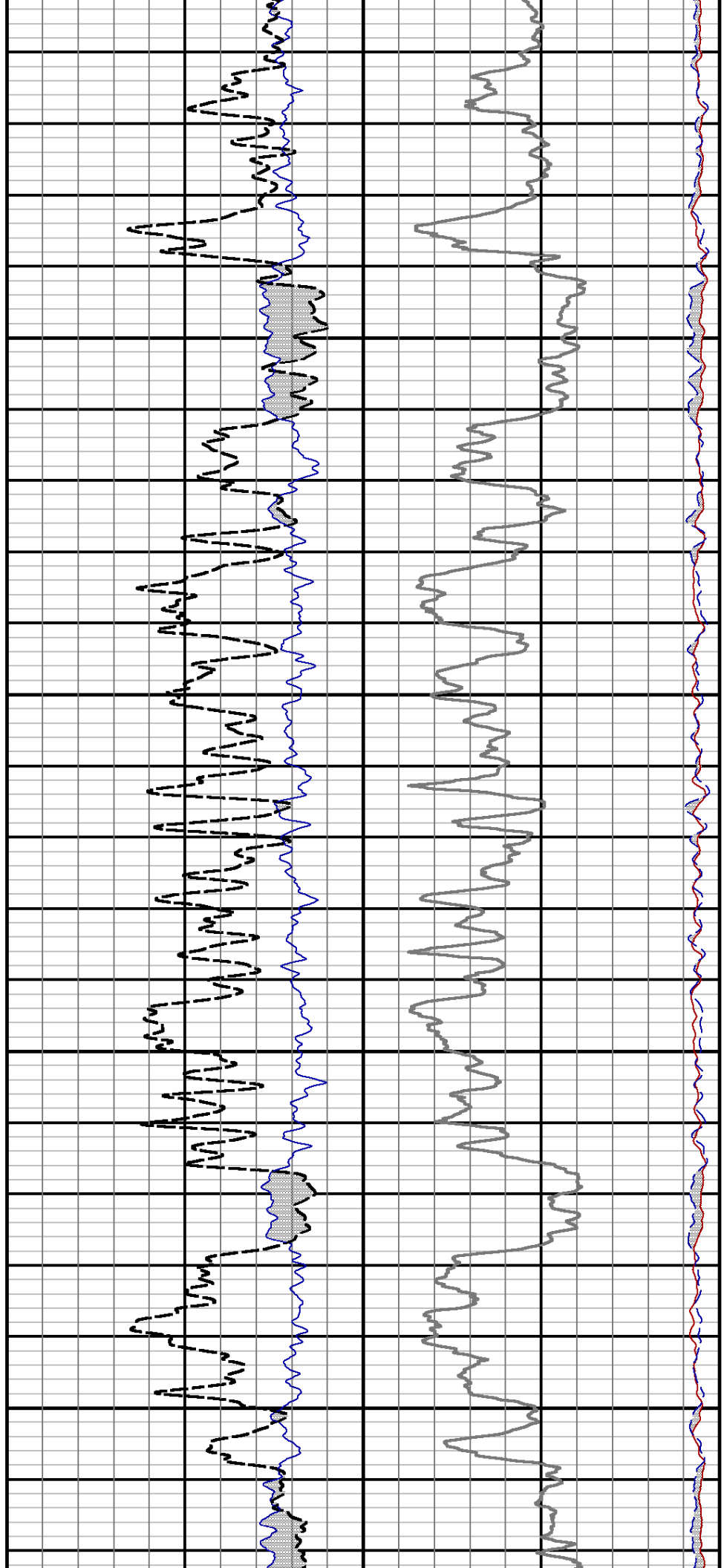


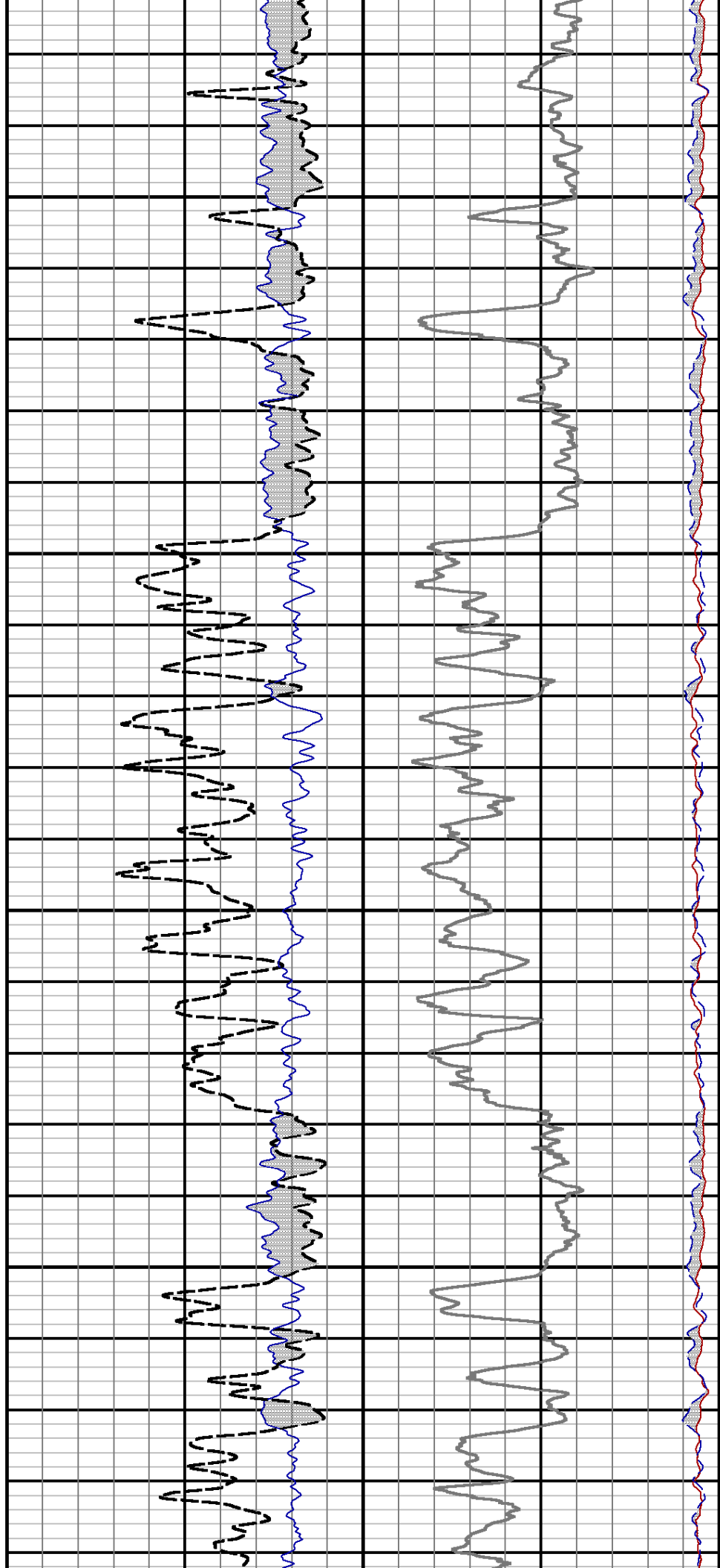
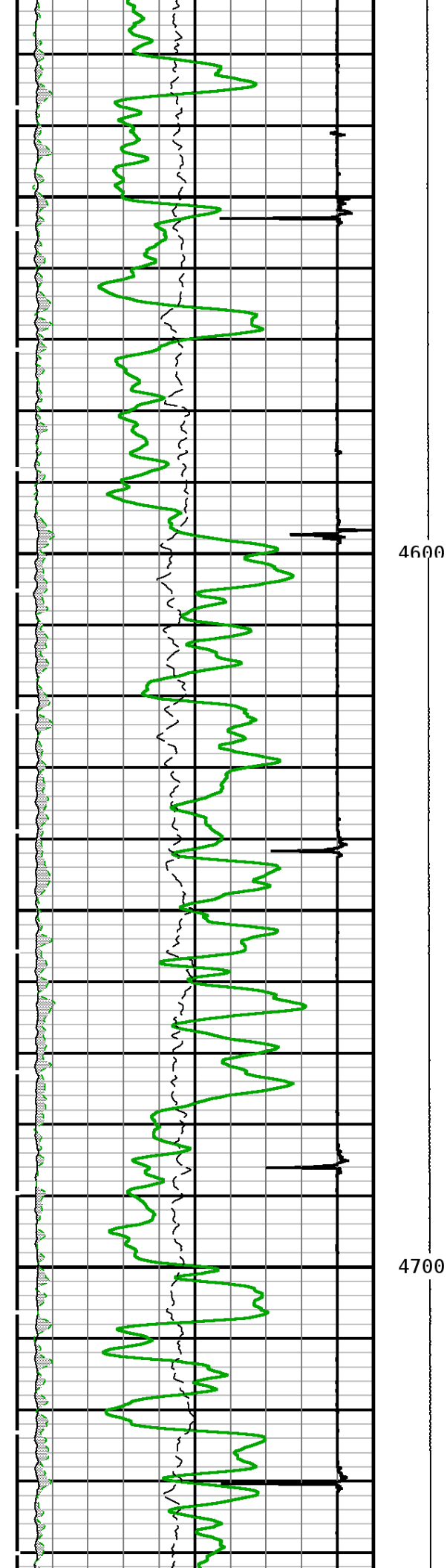


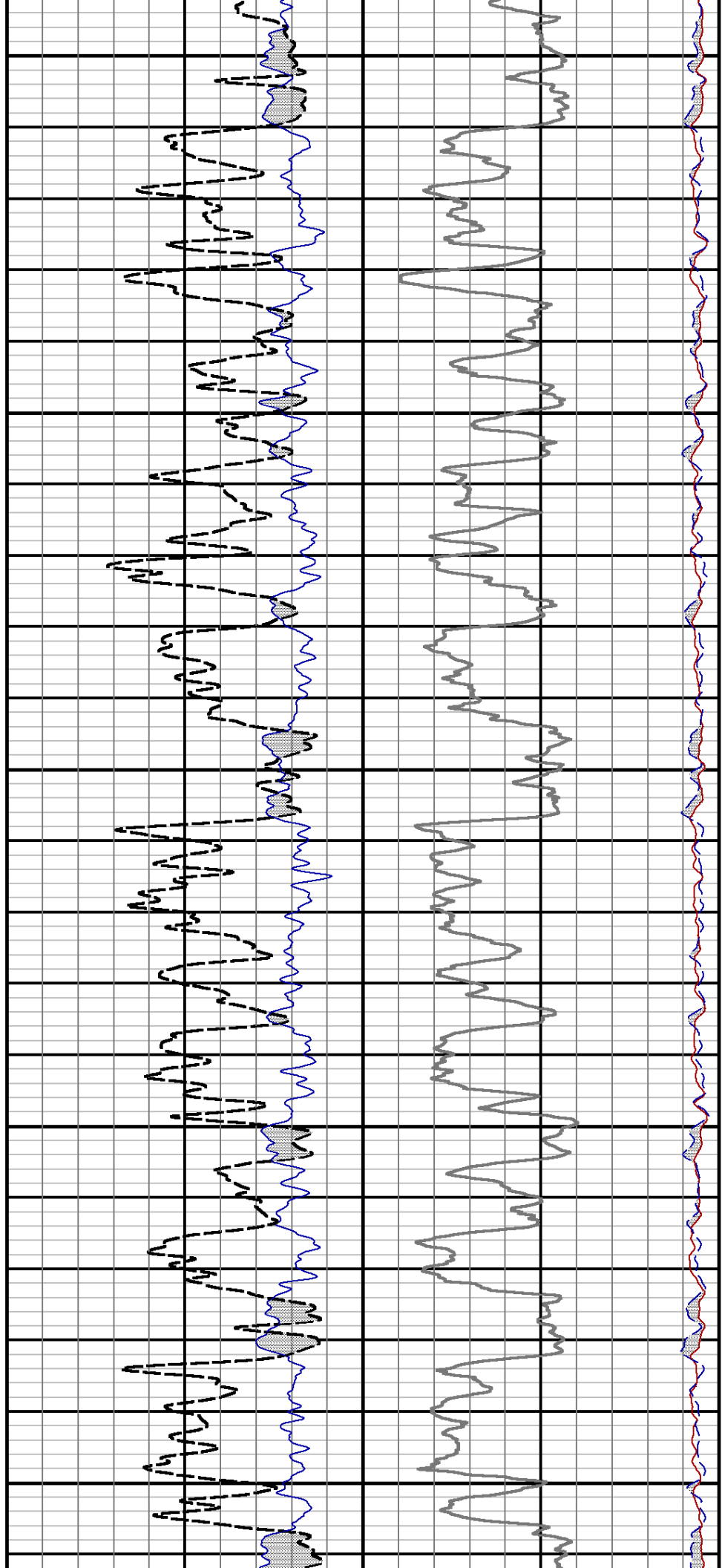
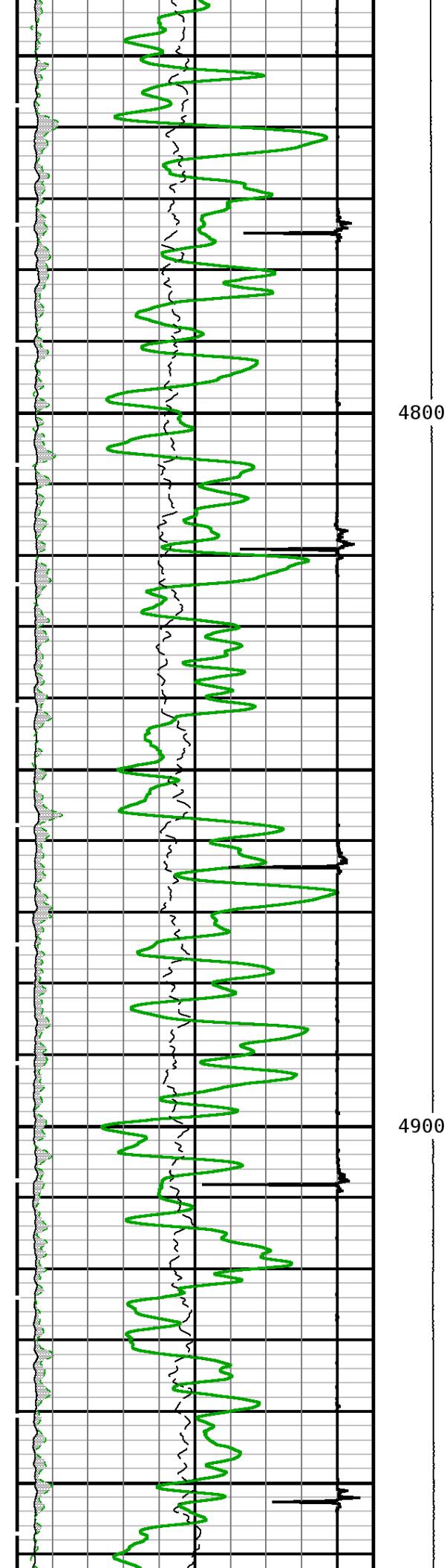


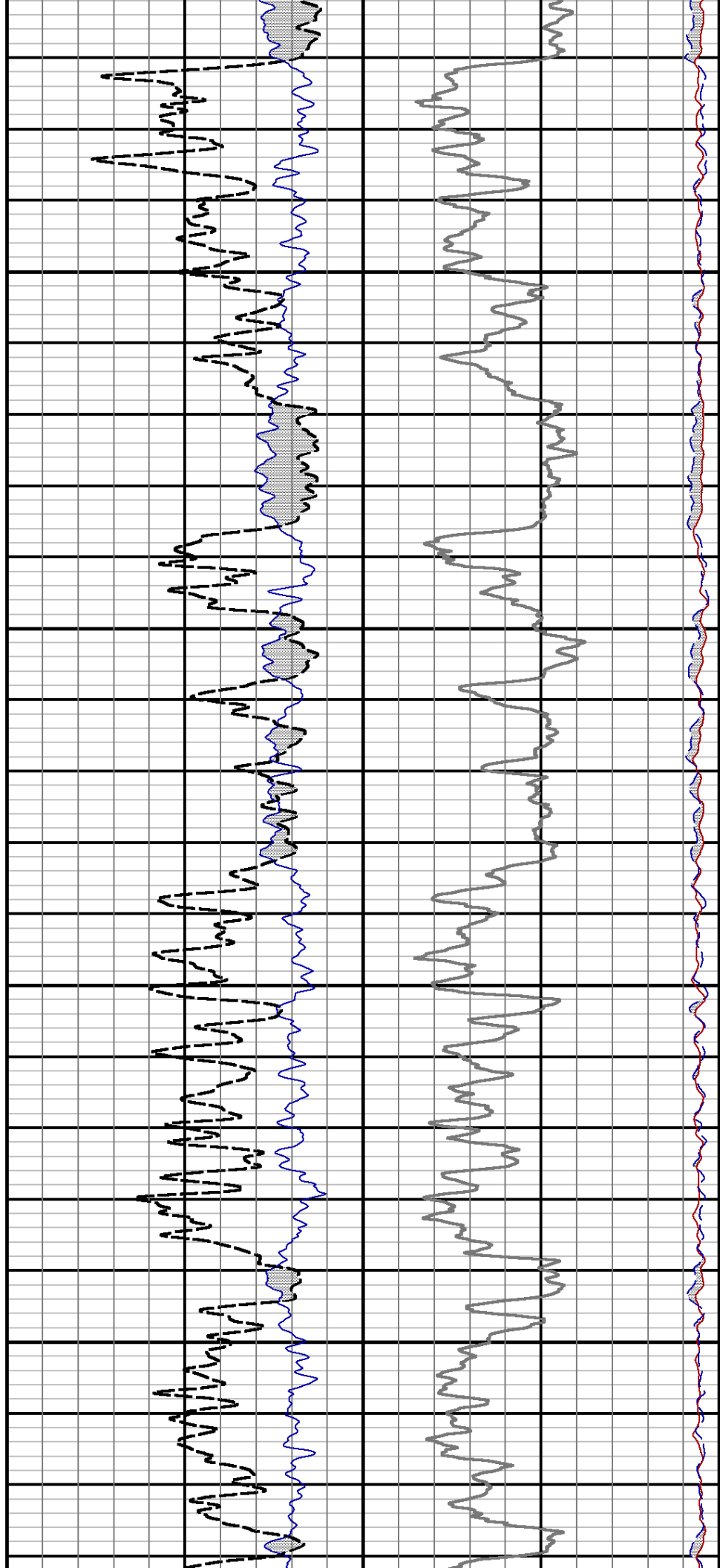
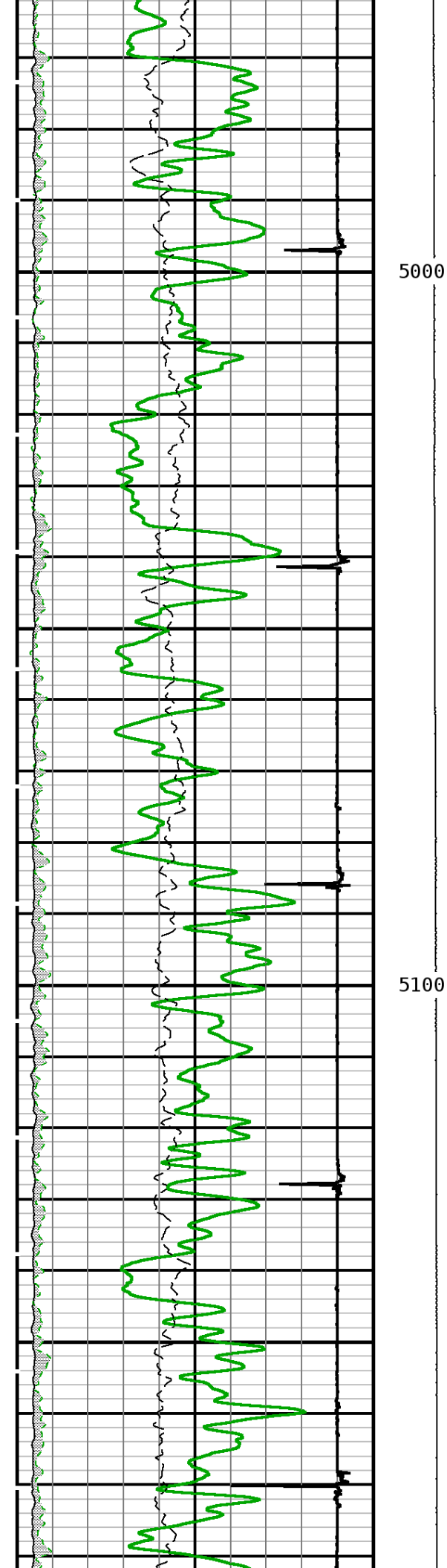
4400

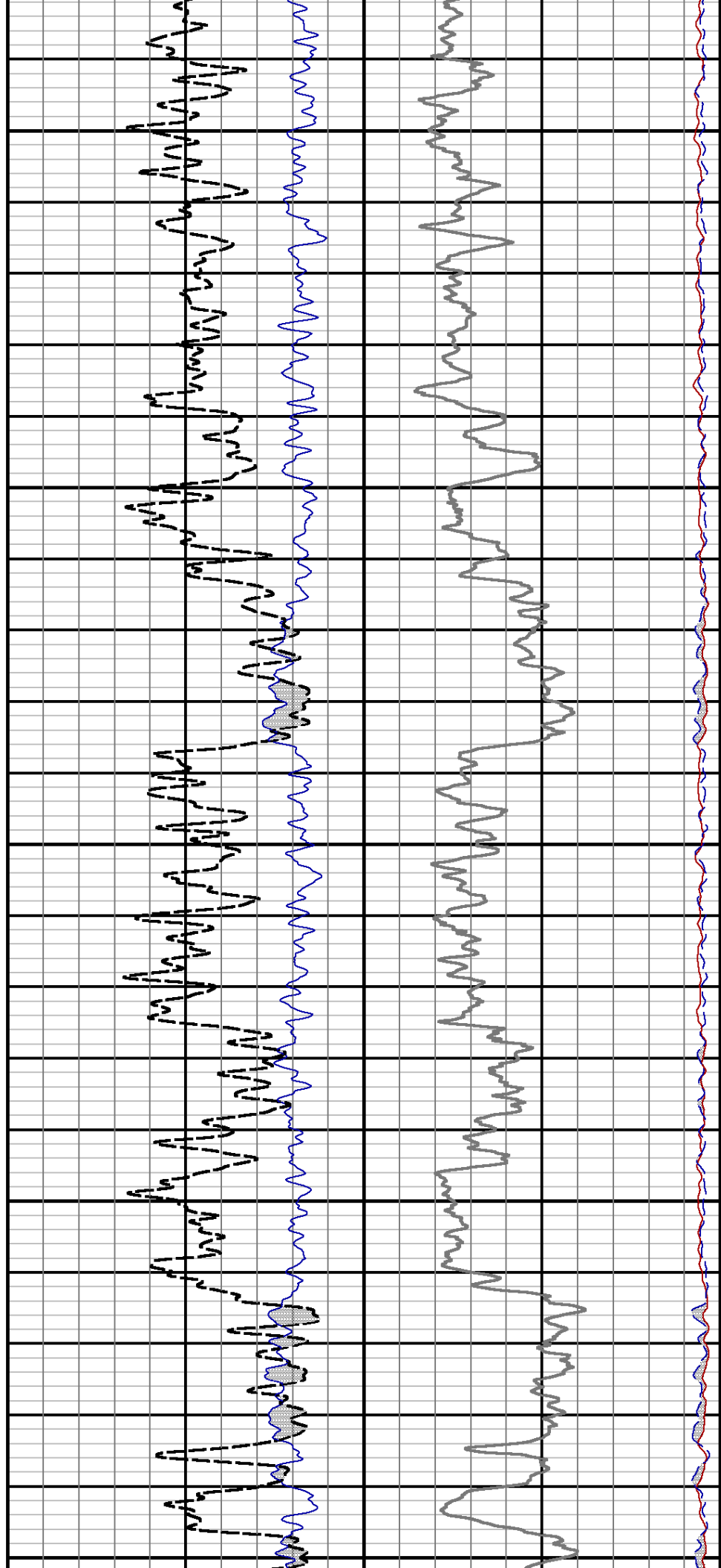
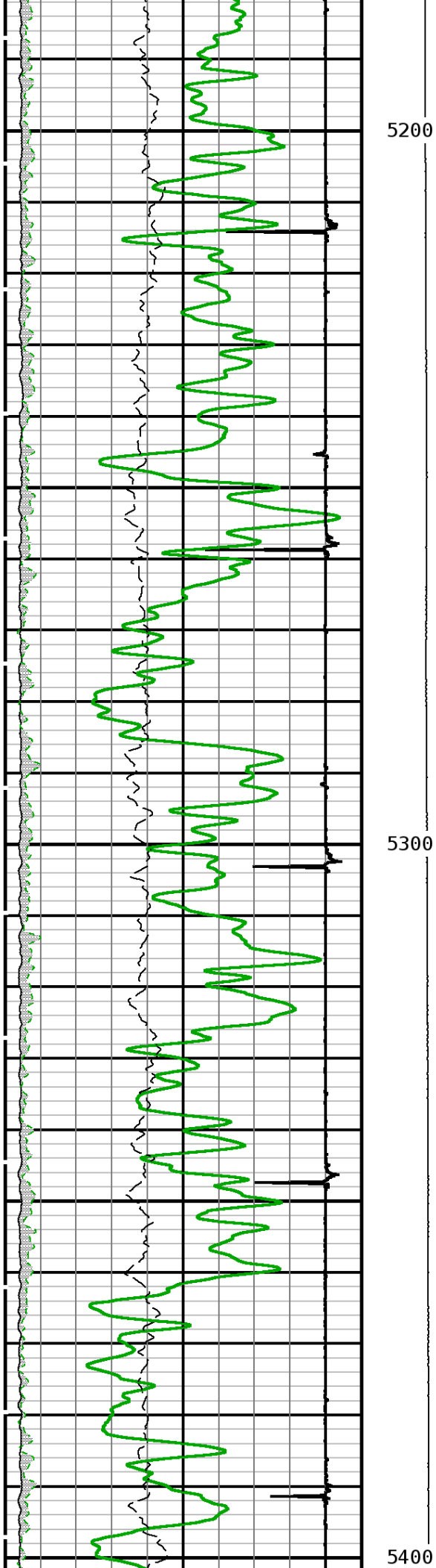
4500

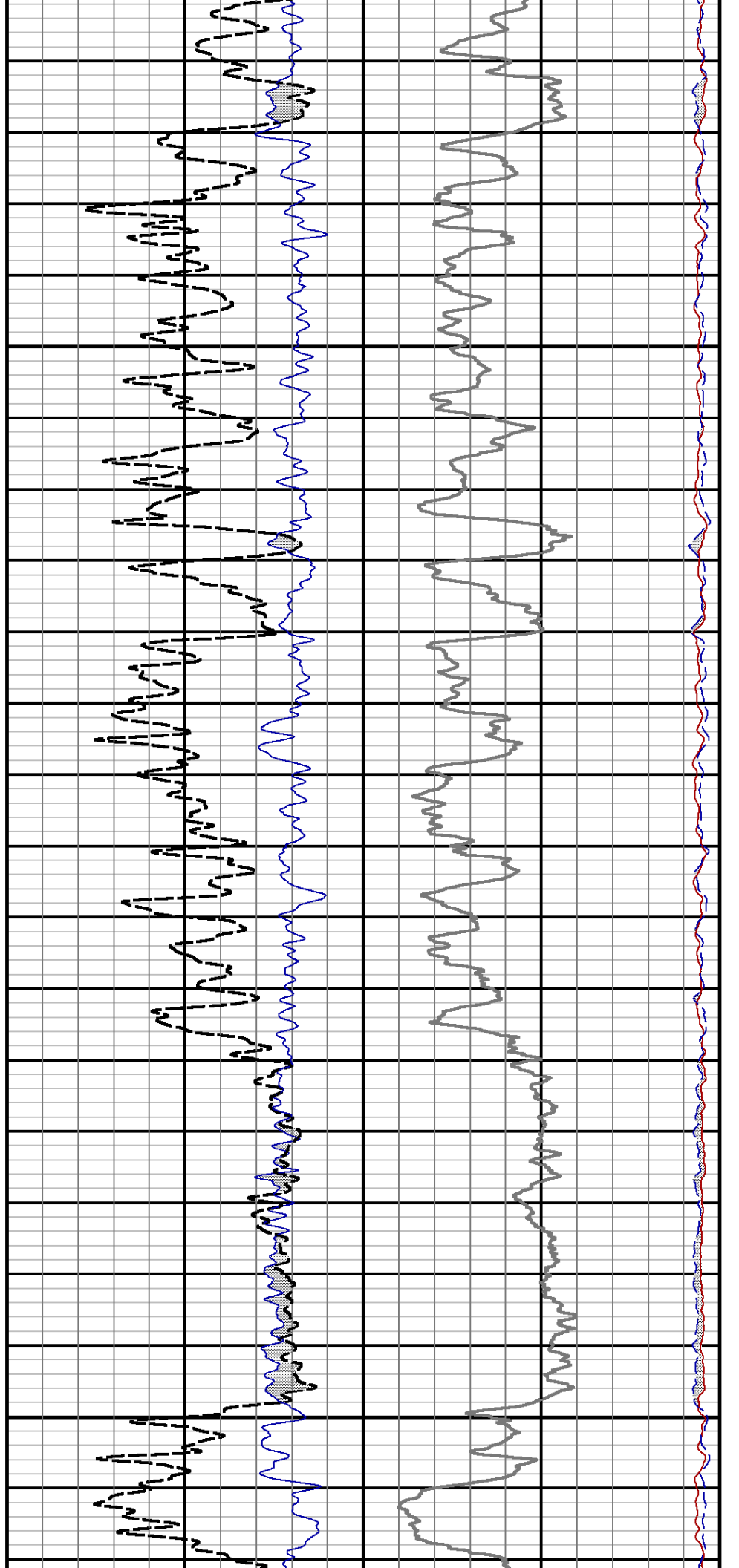
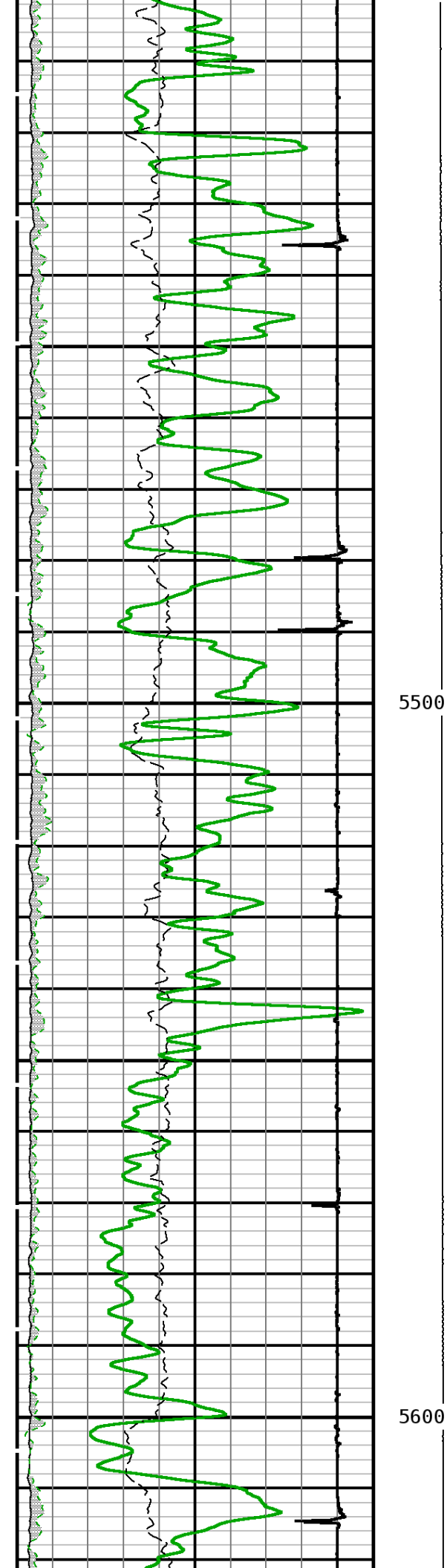


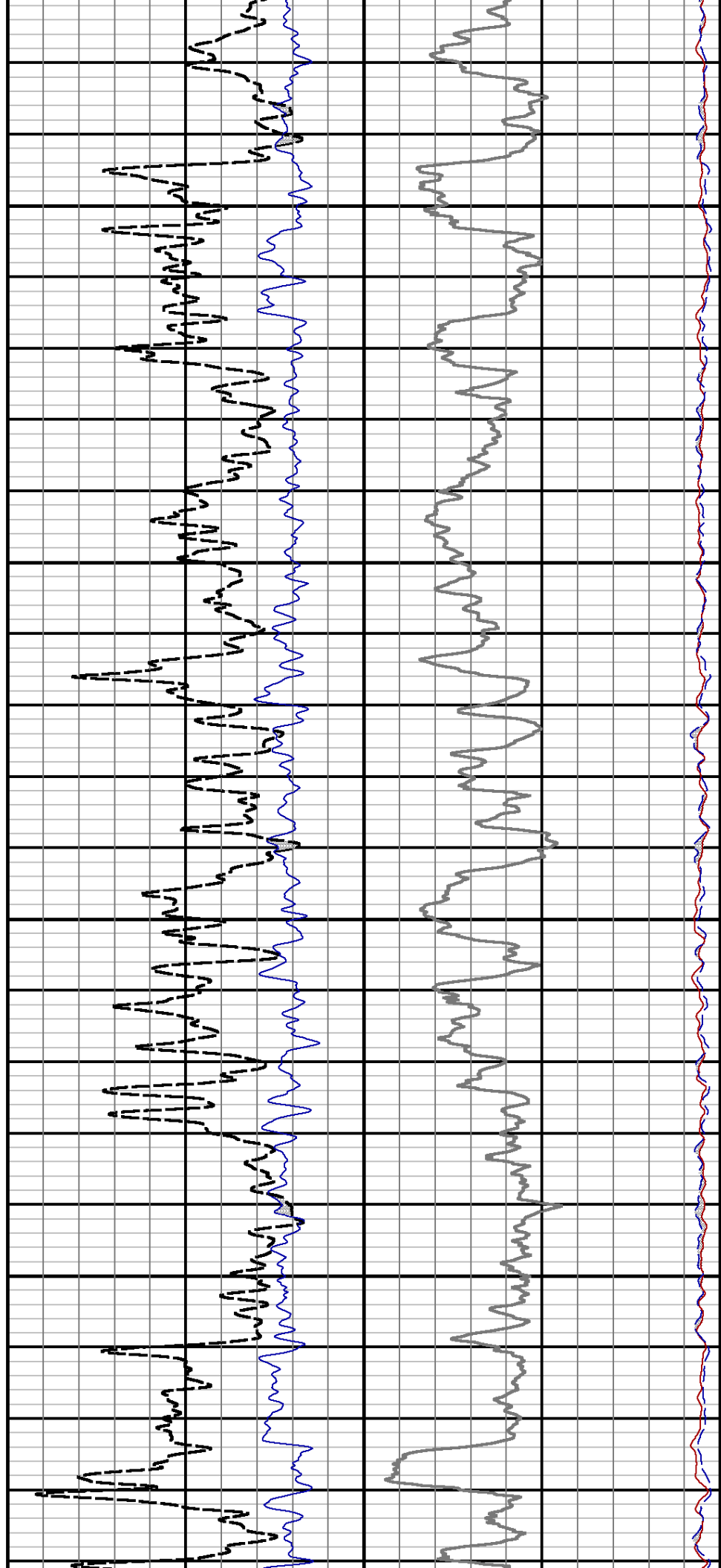
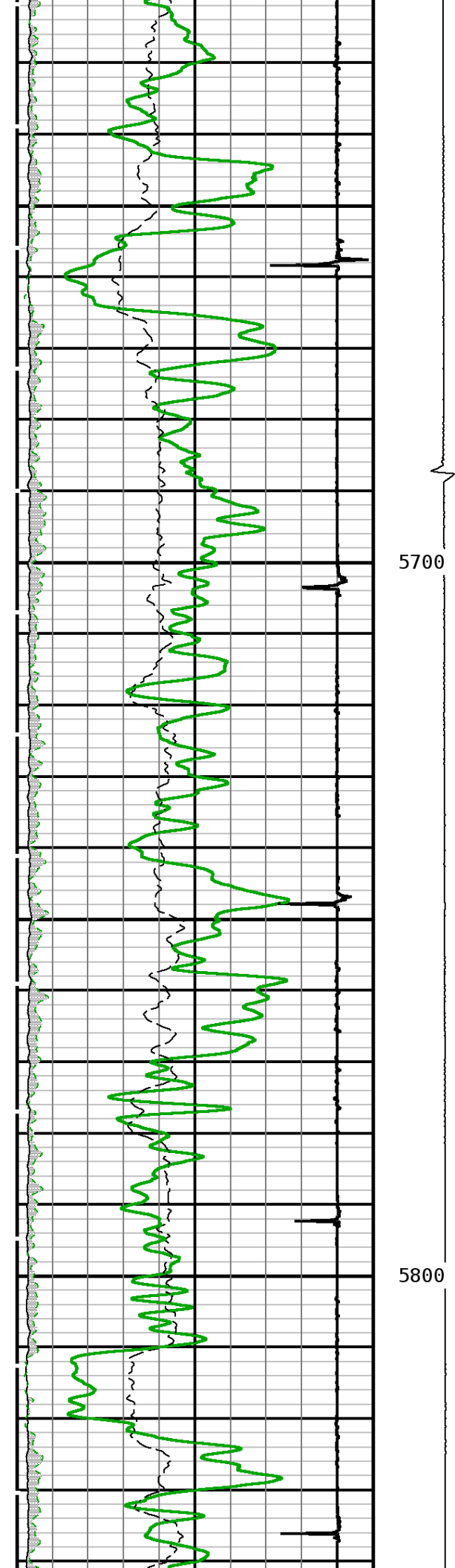




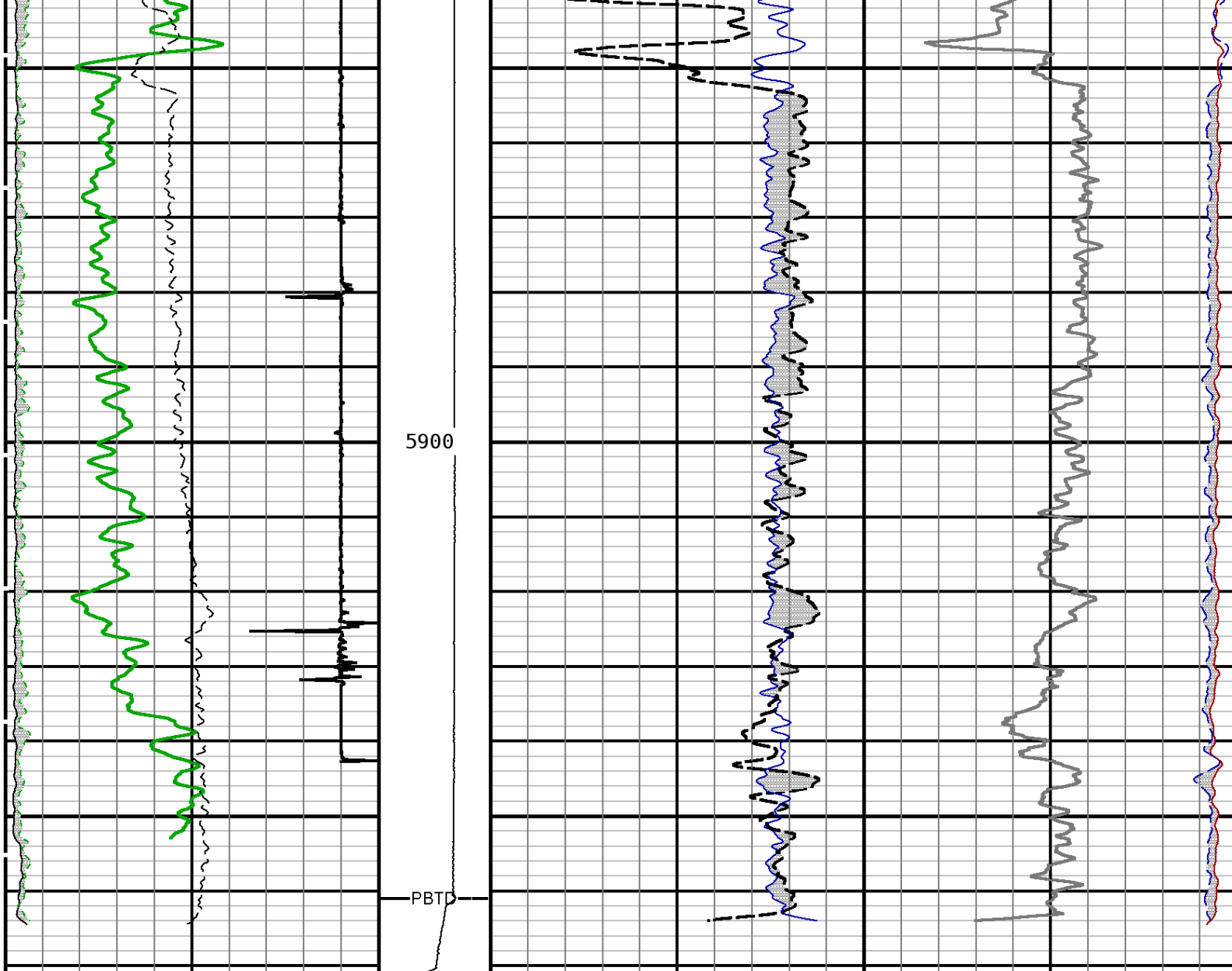












BGD NEAR	Tension	Formation Sigma			
0.0 30000.0	0 2000	60.0			0.0
BGD FAR		Formation Ratio		NEAR 1	
0.0 3000.0		6.0 1.0	240.0	Counts/Second	0.0
OUTPUT QUALITY		Ratio Inel N to F		FAR 1	
0.0 200000.0		-1.0 14.0	40.0	Counts/Second	0.0
Gamma Ray					
0 API 200					
Collar Locator					
-9000 Millivolts 1000					

START DEPTH: 5971.4 DIRECTION: UP DATE: 07/02/2014 TIME: 16:20 MODE: ORIGINAL  
 RECOMPUTED DATE: 07/02/2014 TIME: 16:20

91510673 PNDMF



MAIN PASS

DEPTH SCALE: 5":100'

LOGGED VERSION: 2012.07.18.162"

DEPTH SCALE: 5":100'

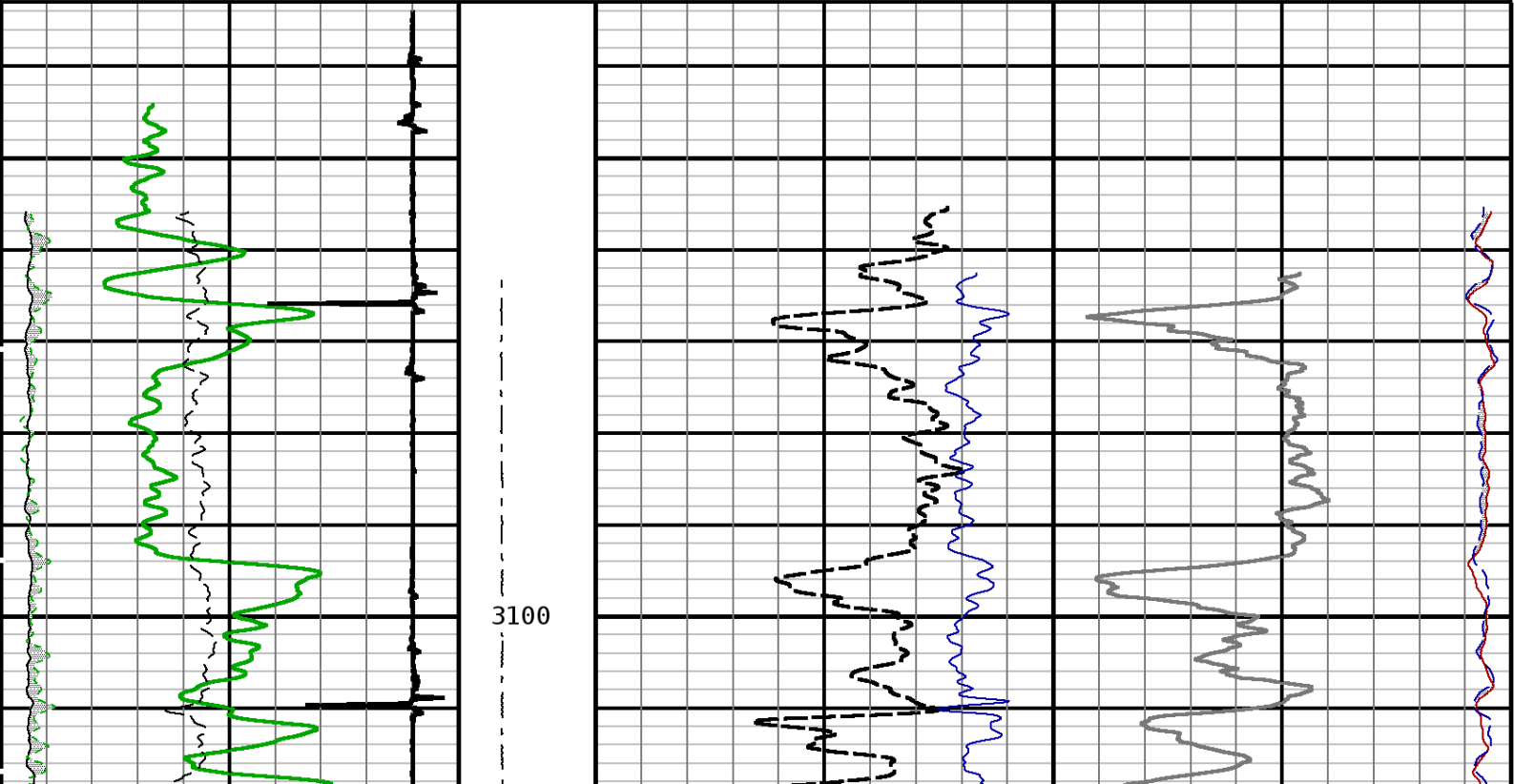
PROCESSED VERSION: 2012.07.18.162"

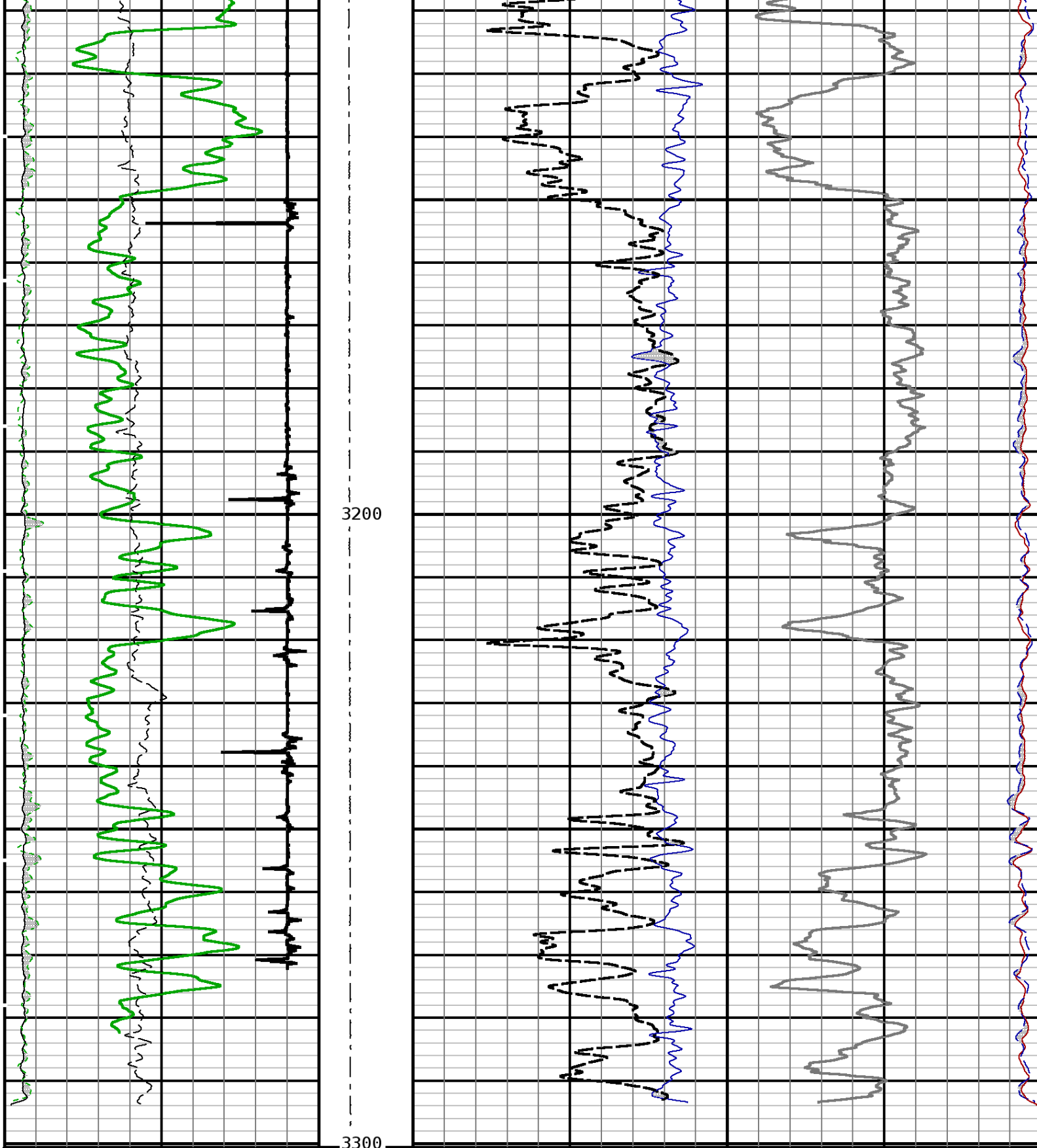
REPEAT PASS

91510673 PNDRF

FINISH DEPTH: 3033.1 Feet DIRECTION: UP DATE: 07/02/2014 TIME: 16:33 MODE: ORIGINAL

Collar Locator					
-9000	Millivolts	1000			
Gamma Ray					
0	API	200			
OUTPUT QUALITY					
0.0		200000.0			
BGD FAR					
0.0		3000.0			
BGD NEAR					
0.0		30000.0			
			Tension		
			0	2000	
			Ratio Inel N to F		
			-1.0	14.0	
			FAR 1		
			40.0	Counts/Second	0.0
			Formation Ratio		
			6.0	1.0	
			NEAR 1		
			240.0	Counts/Second	0.0
			Formation Sigma		
			60.0		0.0





BGD NEAR		Tension	Formation Sigma			
0.0	30000.0	0 2000	60.0	0.0		
BGD FAR			Formation Ratio		NEAR 1	
0.0	3000.0		6.0	1.0	240.0	0.0
OUTPUT QUALITY			Ratio Inel N to F		FAR 1	
0.0	200000.0		-1.0	14.0	40.0	0.0
					Counts/Second	
					Counts/Second	

**Gamma Ray**

0 API 200

**Collar Locator**

-9000 Millivolts 1000

START DEPTH: **3300.6** DIRECTION: **UP** DATE: **07/02/2014** TIME: **16:33** MODE: **ORIGINAL**

91510673 PNDRF

**REPEAT PASS**DEPTH SCALE: **5":100'**LOGGED VERSION: **2012.07.18.162"****1 7/16 Adapter Head**

Weight 2.2 LBS.  
Length 12 IN.  
Max. Diameter

Total Stack Weight in air  
Total Stack Length 32.0 FT.

**Pulsed Neutron Processor**

Weight 49 LBS.  
Length 12.9 FT.  
Max. Diameter 1.69 IN.

**Pulsed Neutron Detectors**

Weight 29.9 LBS  
Length 19.0 FT.  
Max. Diameter 1.69 IN.

**Pulsed Neutron Generator**

Weight 26 LBS.  
Length 8.7 FT.  
Max. Diameter 1.69 IN.

CCL 28.51 FT.

GR 19.15 FT.

FAR DETECTOR 7.66 FT

From Target ( )

NEAR DETECTOR 7.02 FT

From Target ( )

TARGET 7.10 FT.

1.00 in. dia.

( cm)

1.44 in. dia.

( cm)

1.69 in. dia.

1.69 in. dia.

1.69 in. dia.

**COMPANY**    **URSA OPERATING COMPANY**

**WELL**        **BAT 34A-24-07-96**

**FIELD**      **BATTLEMENT MESA**

**COUNTY**    **GARFIELD**                      **STATE**    **COLORADO**



**Weatherford®**