

DEPTH SCALE: 5":100'

PROCESSED VERSION: 2012.07.18.162"

MAIN PASS

91408227 PNDMF

FINISH DEPTH: 2664.9 Feet DIRECTION: UP DATE: 07/01/2014 TIME: 12:23 MODE: ORIGINAL

Collar Locator

-9000 Millivolts 1000

Gamma Ray

0 API 200

OUTPUT QUALITY

0.0 200000.0

BGD FAR

0.0 3000.0

BGD NEAR

0.0 30000.0

Tension

0 2000

Ratio Inel N to F

-1.0 14.0

Formation Ratio

6.0 1.0

FAR 1

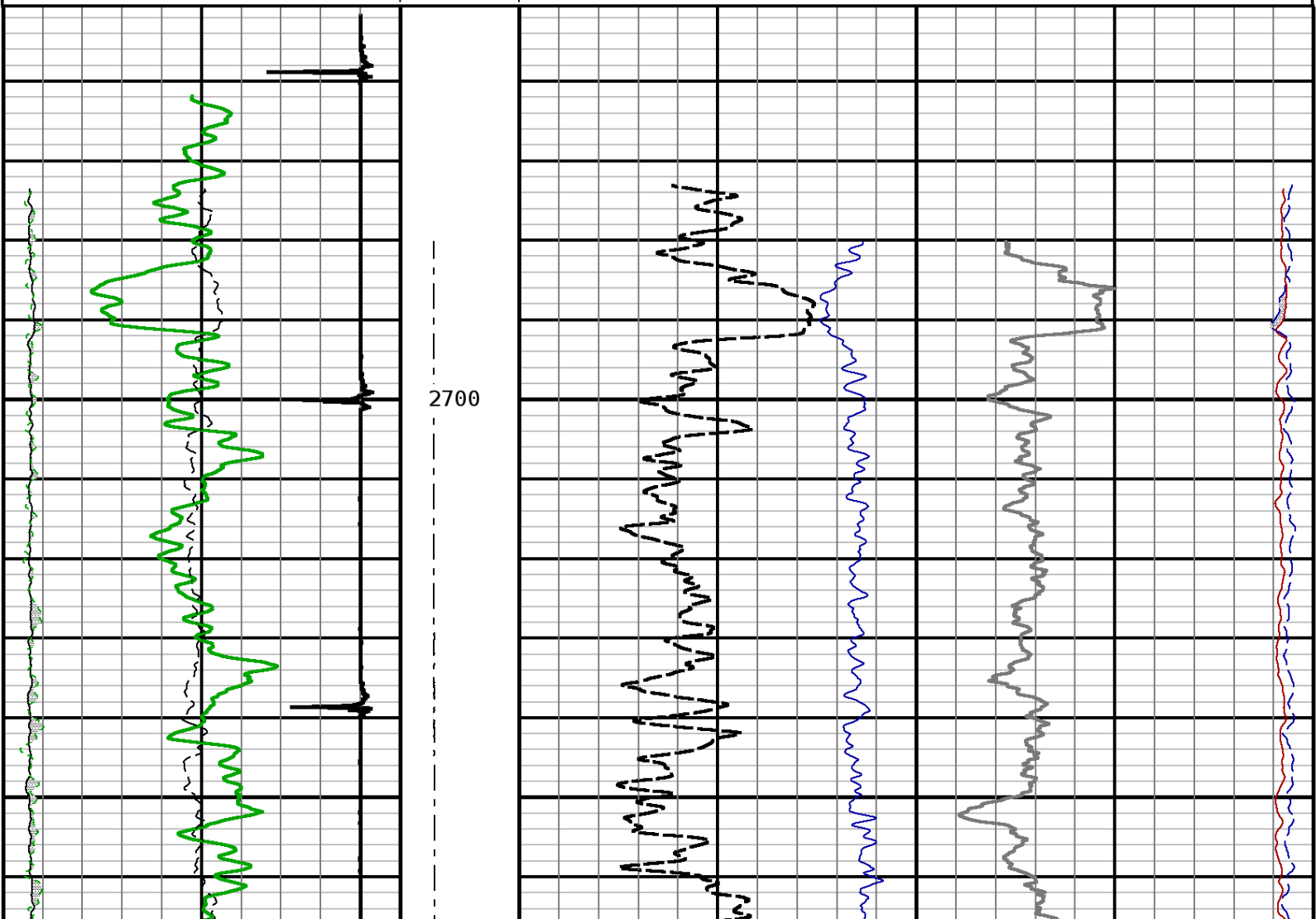
40.0 Counts/Second 0.0

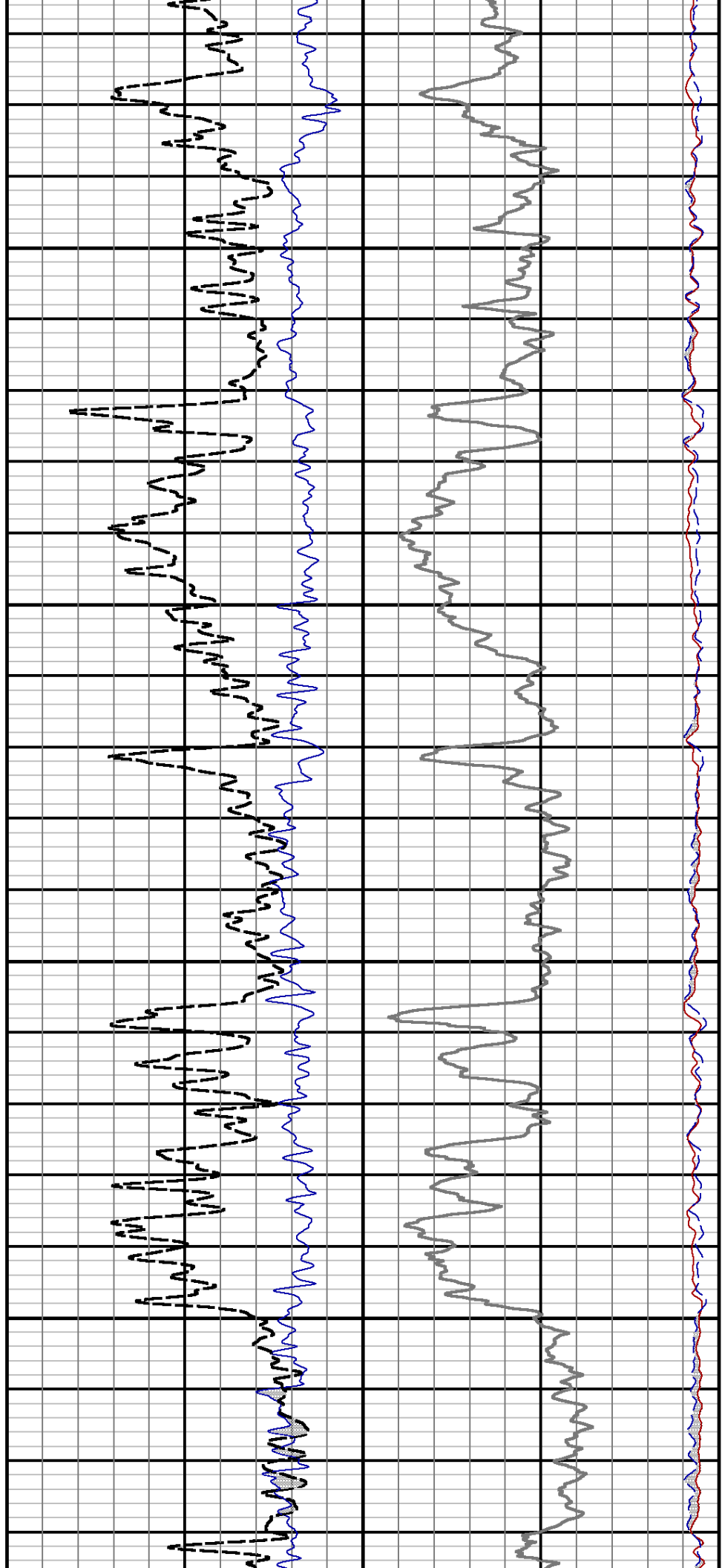
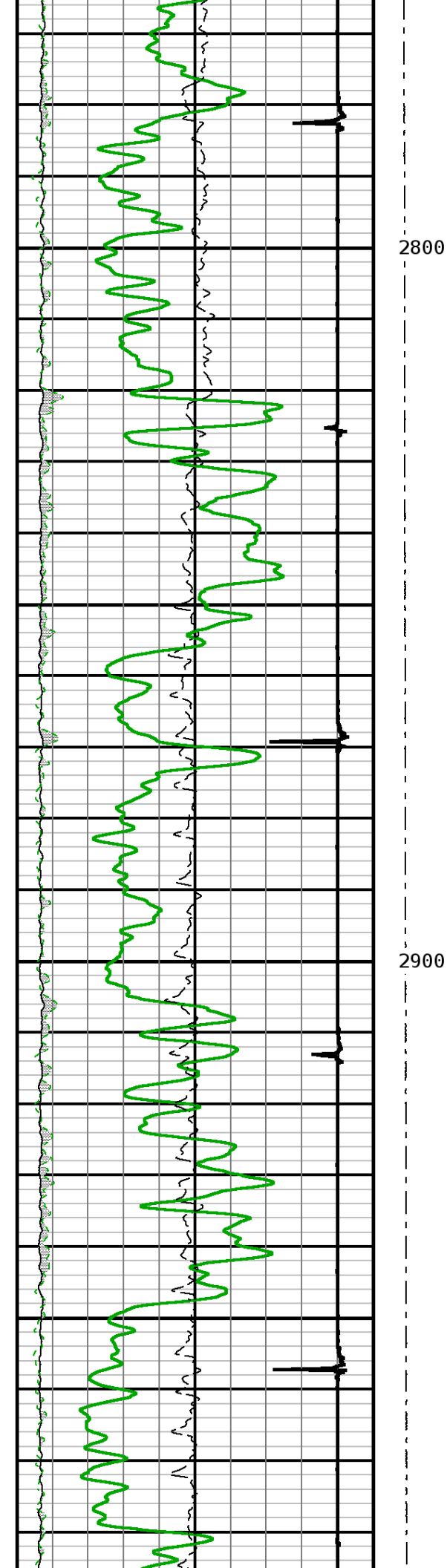
NEAR 1

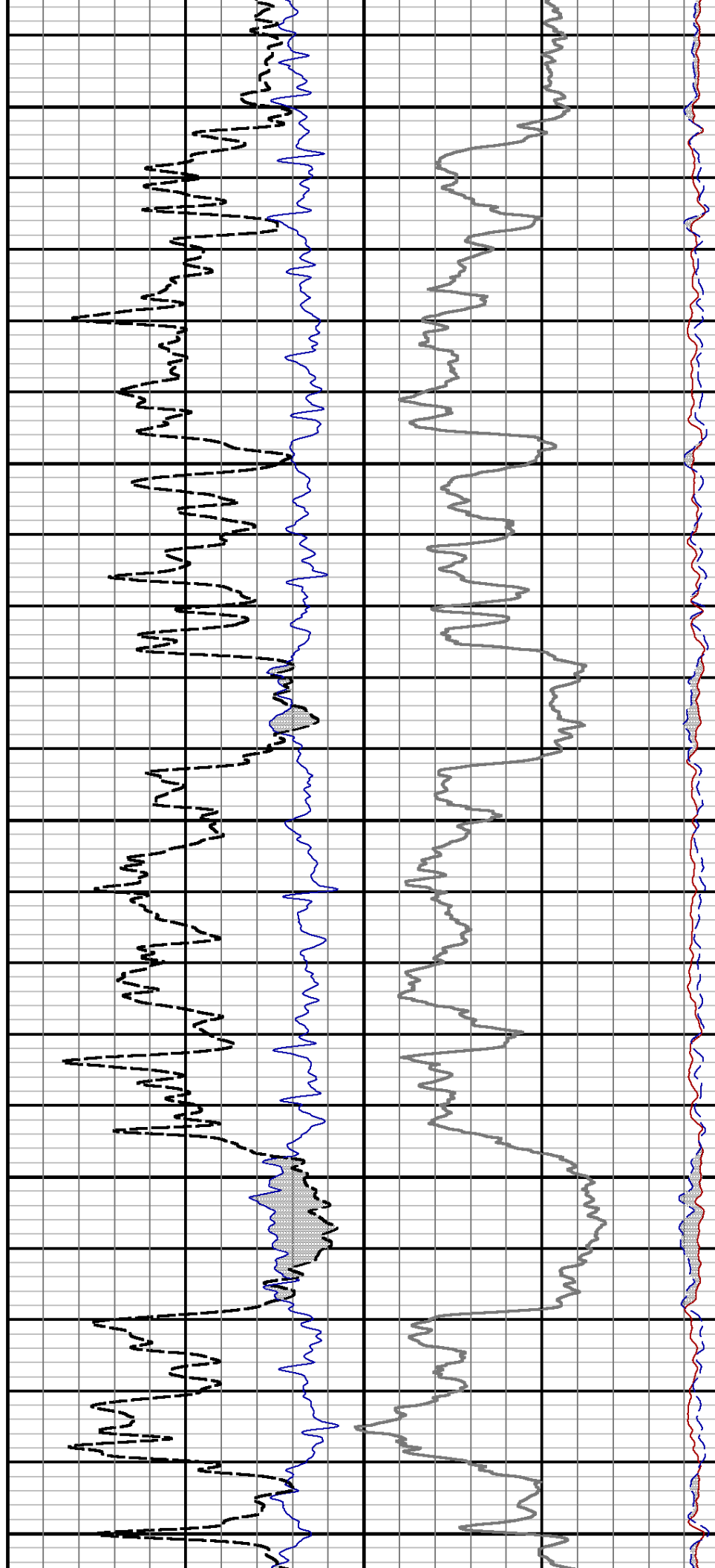
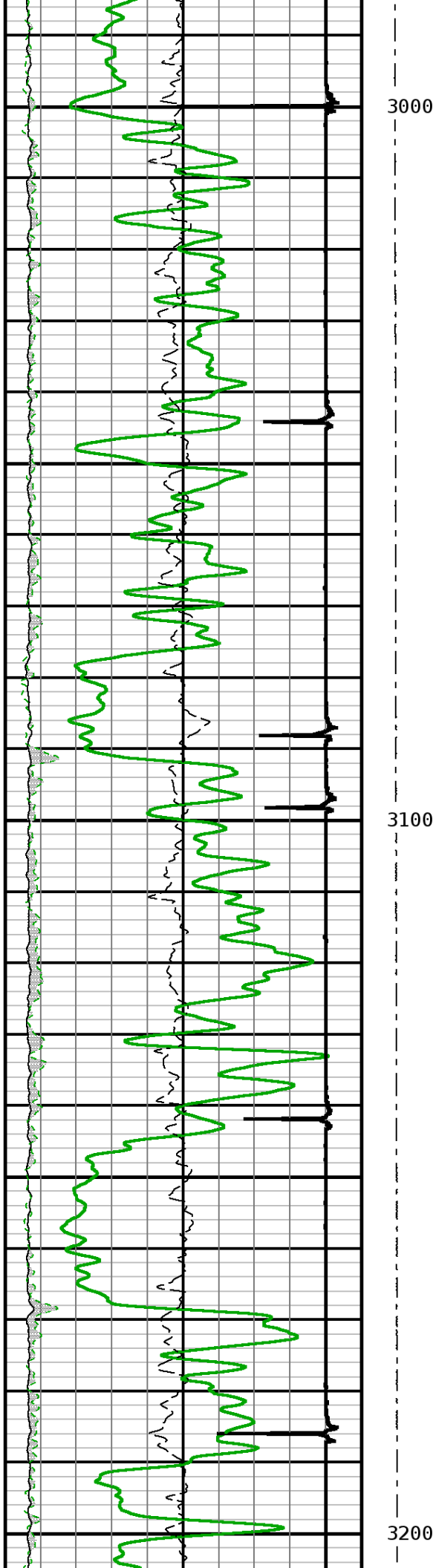
240.0 Counts/Second 0.0

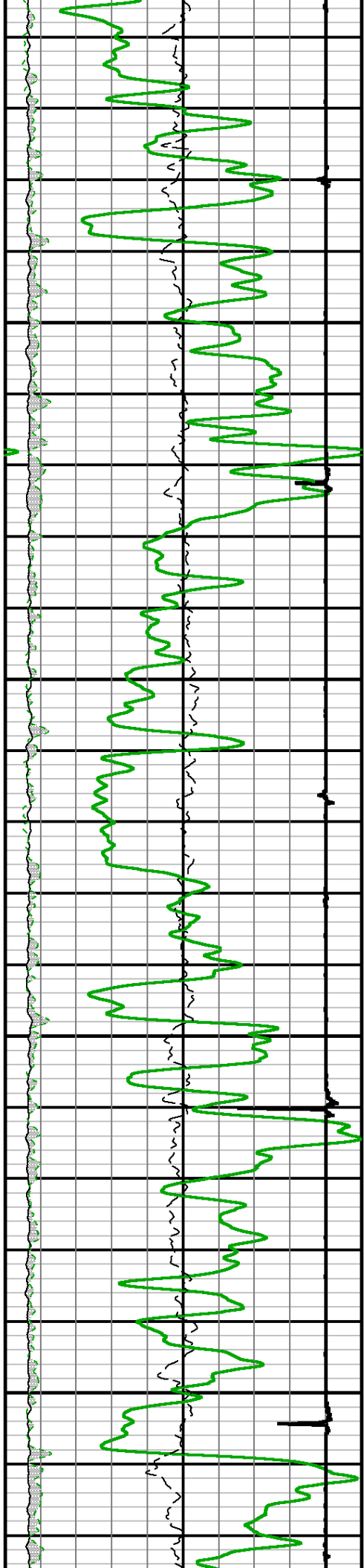
Formation Sigma

60.0 0.0



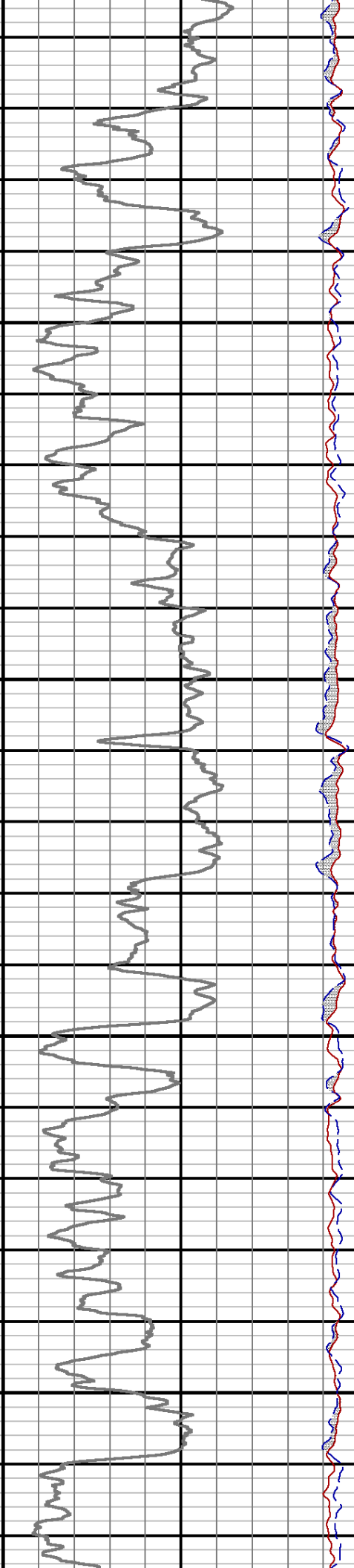
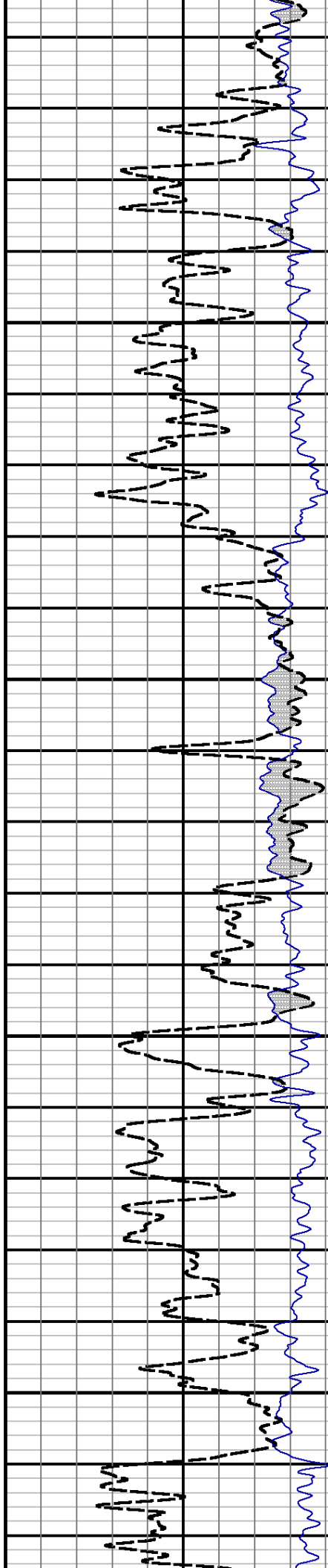


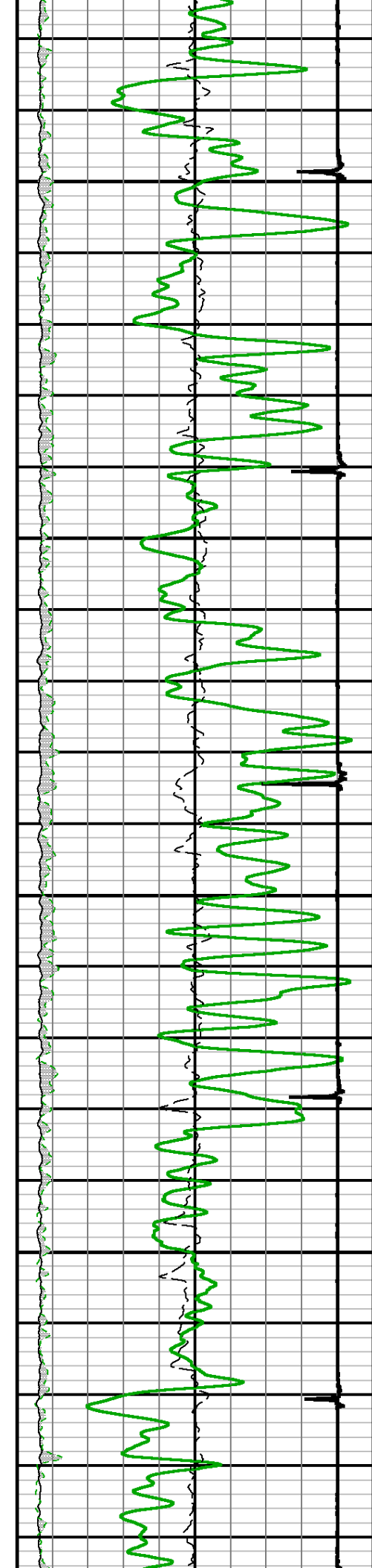




3300

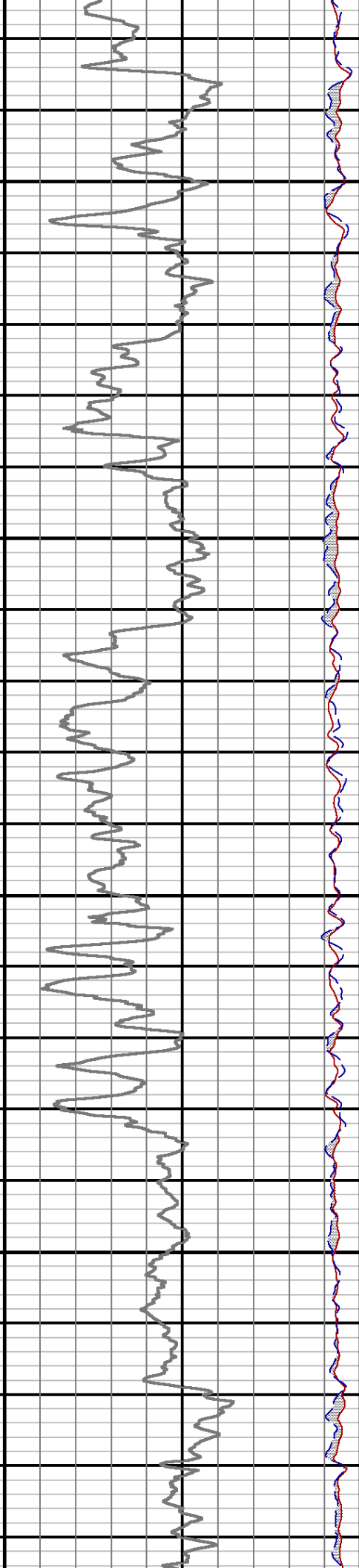
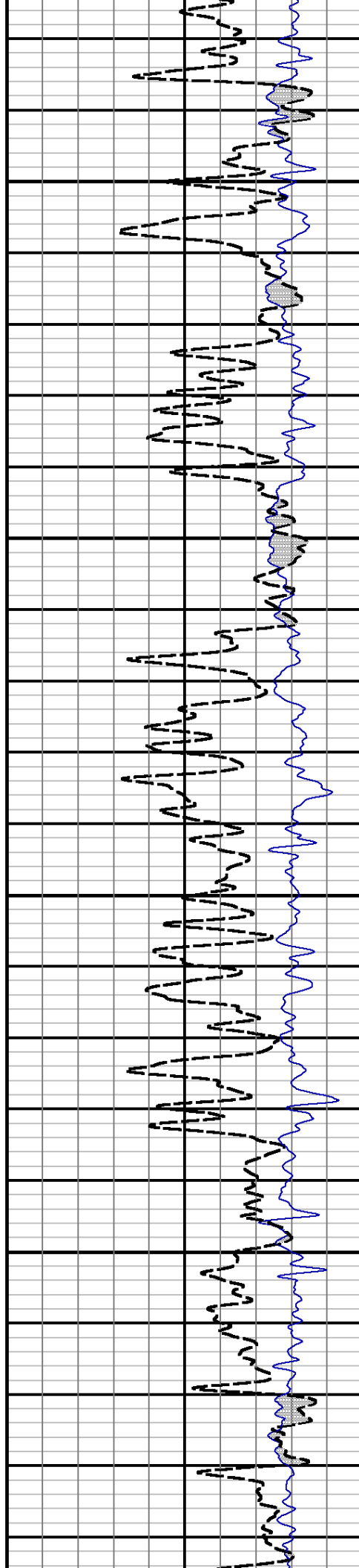
3400

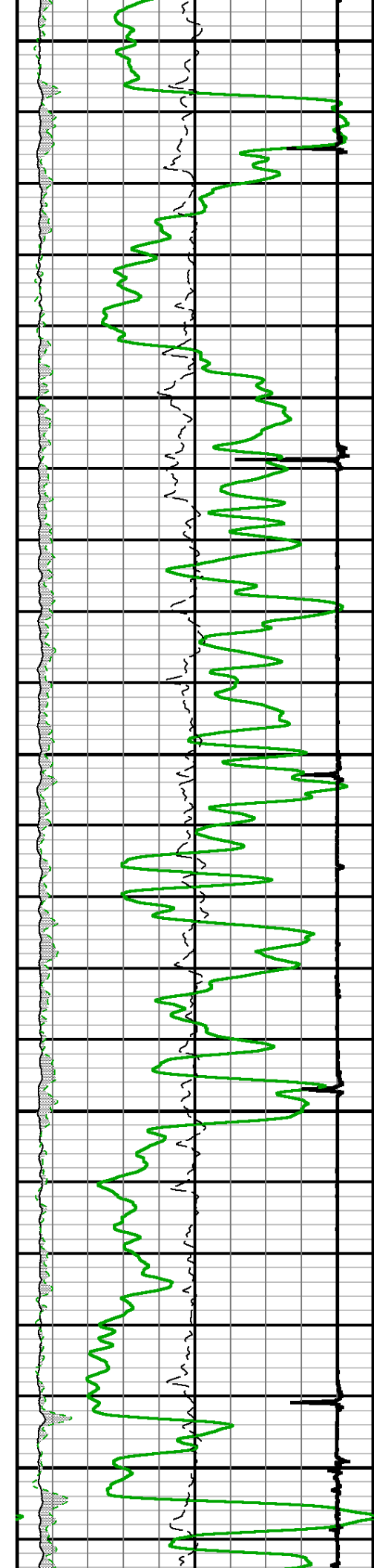




3500

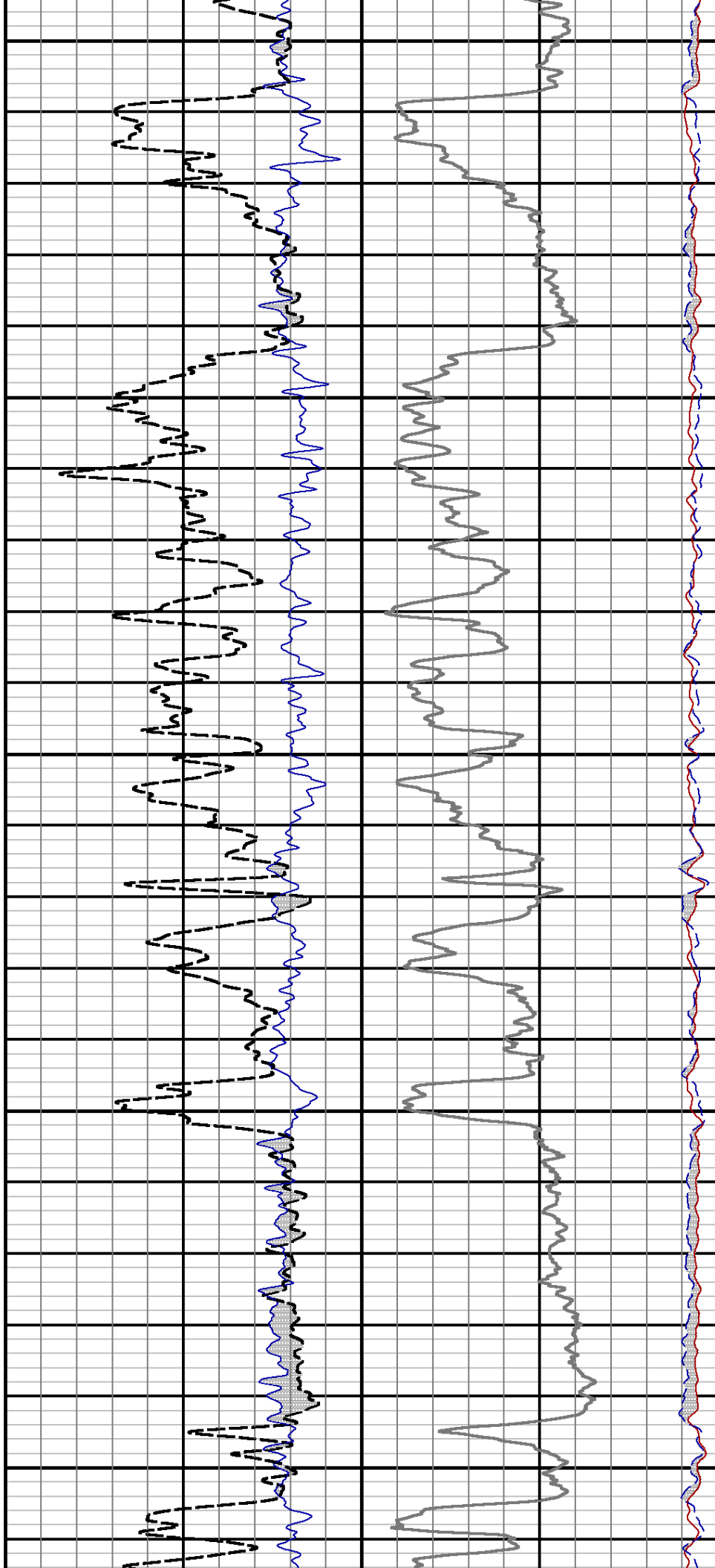
3600

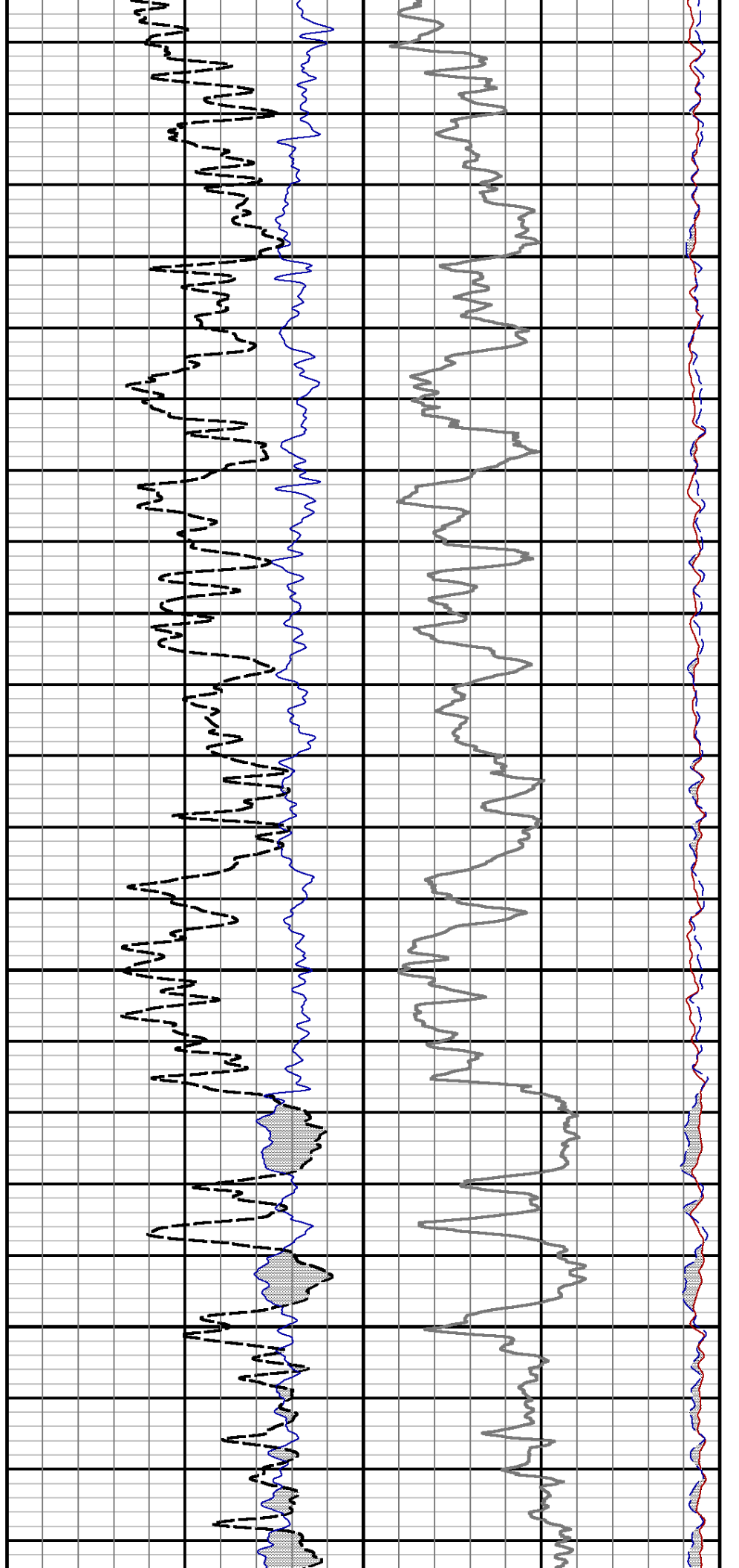
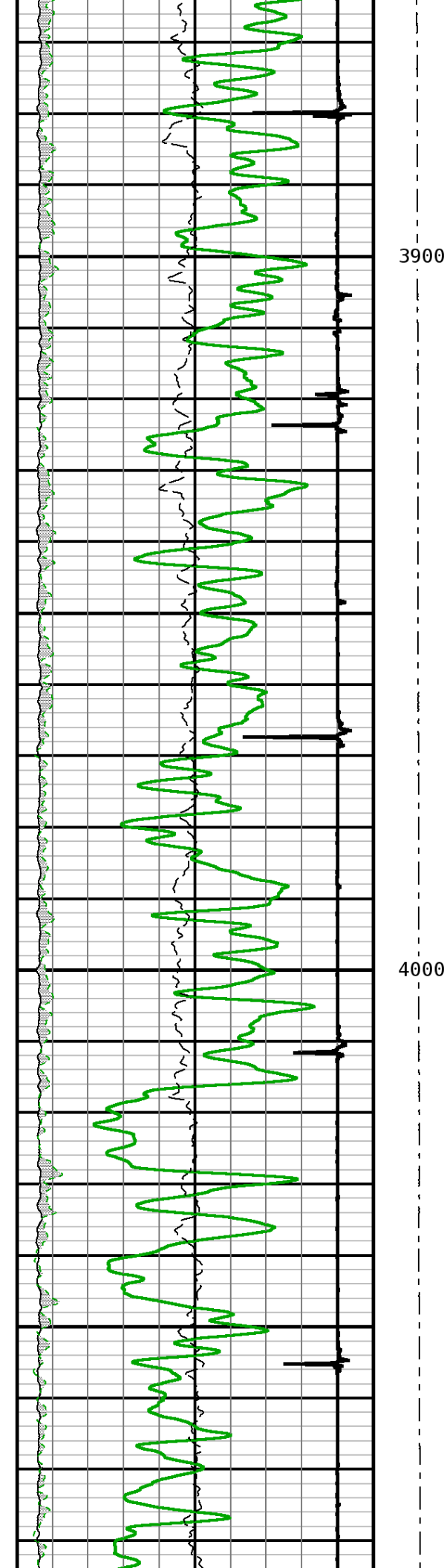


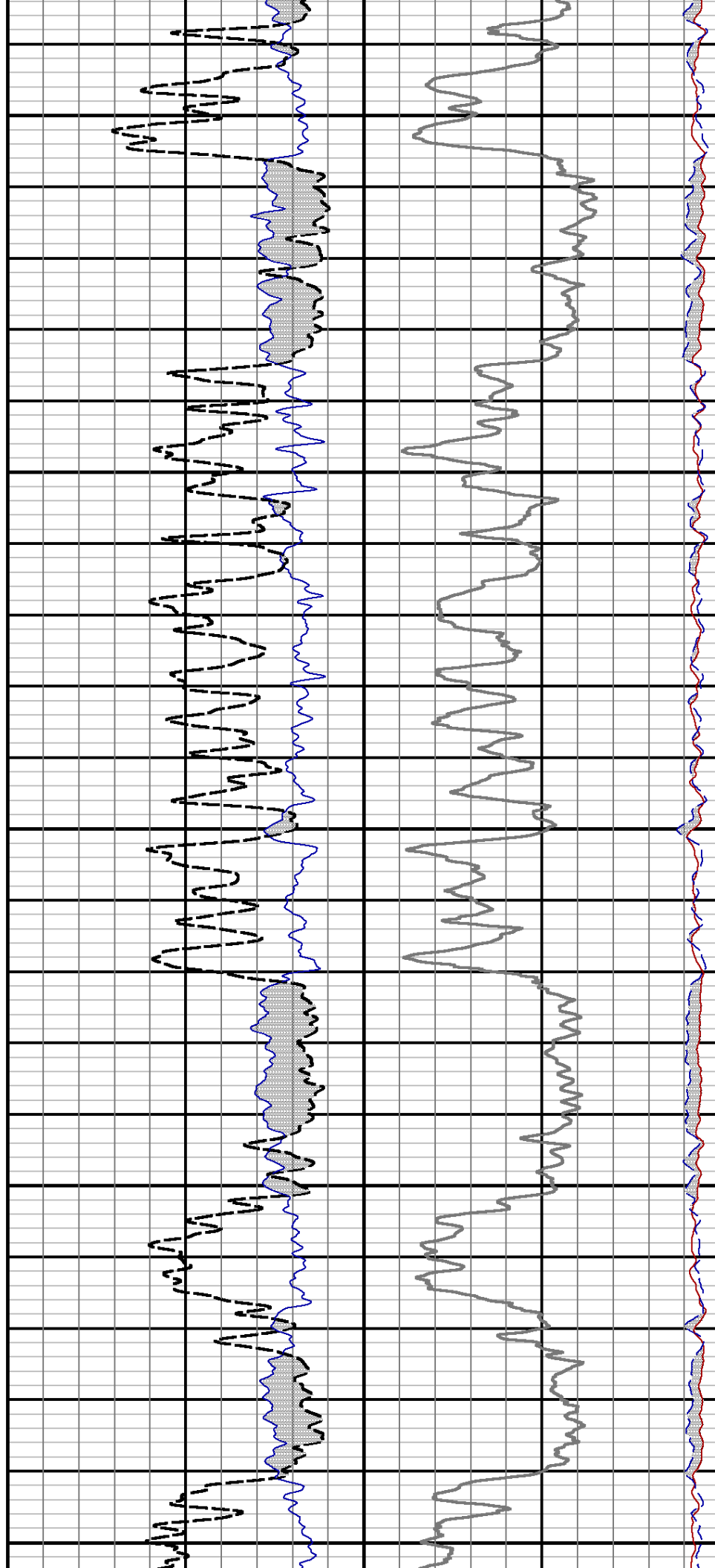
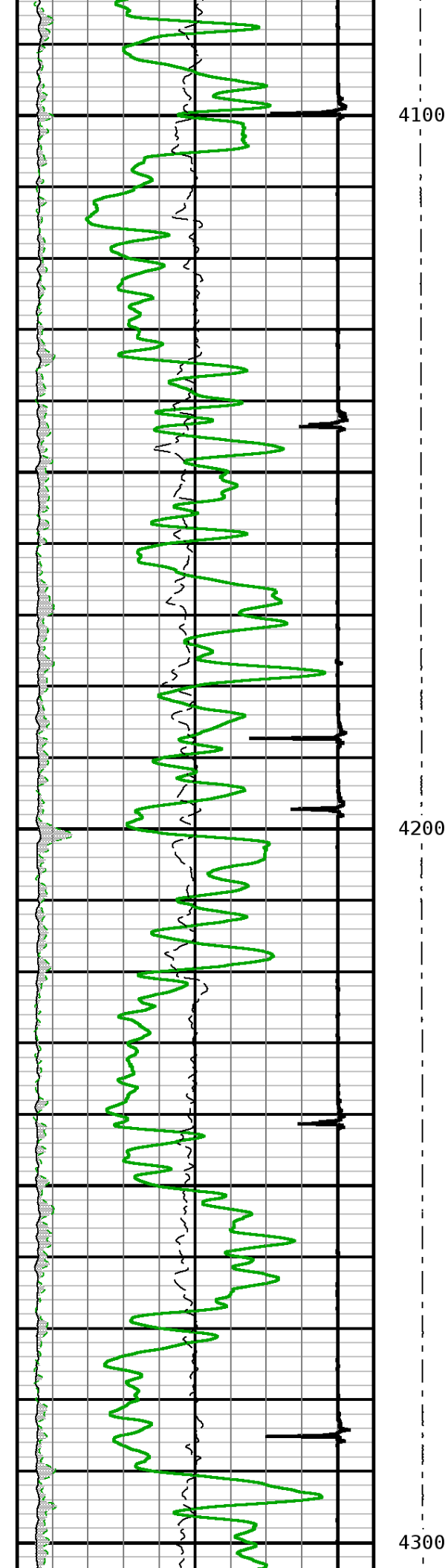


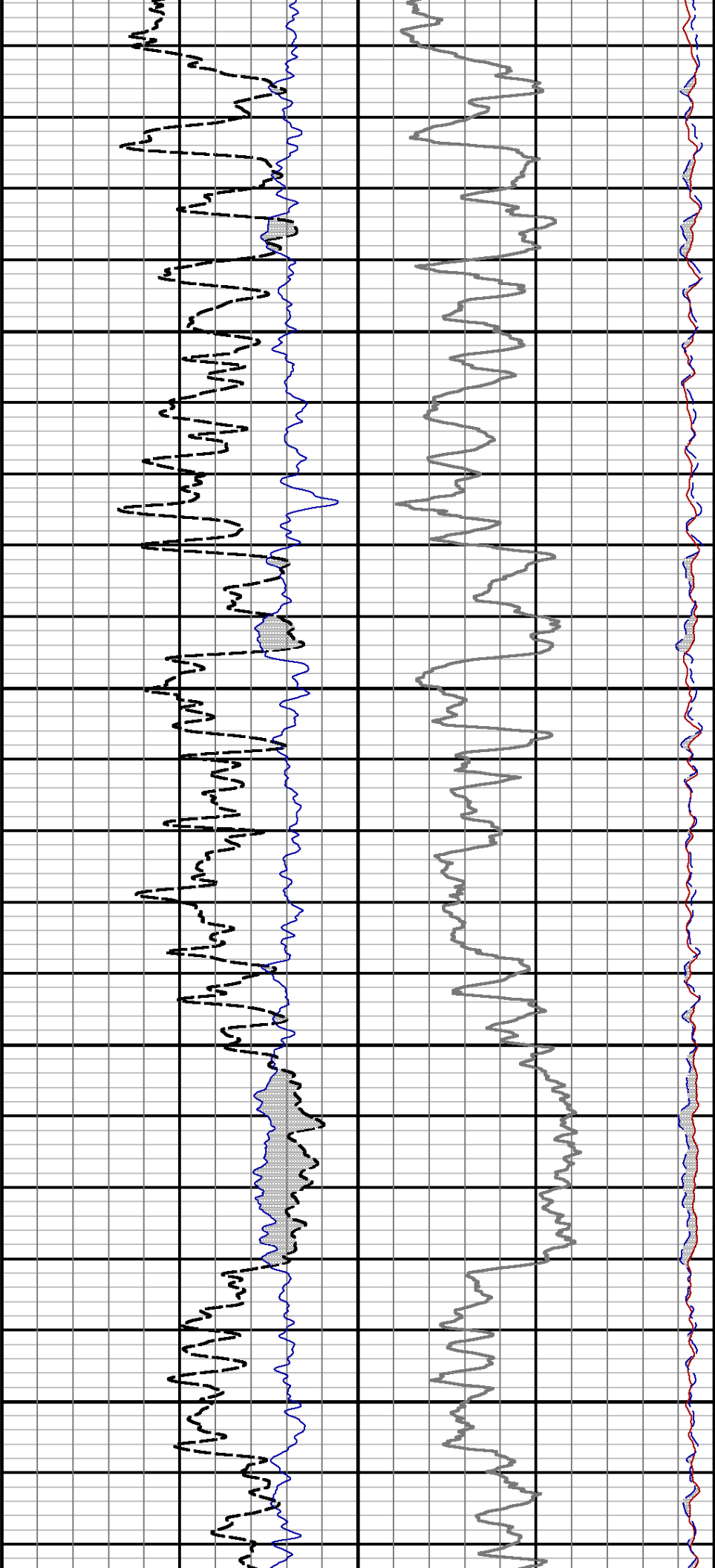
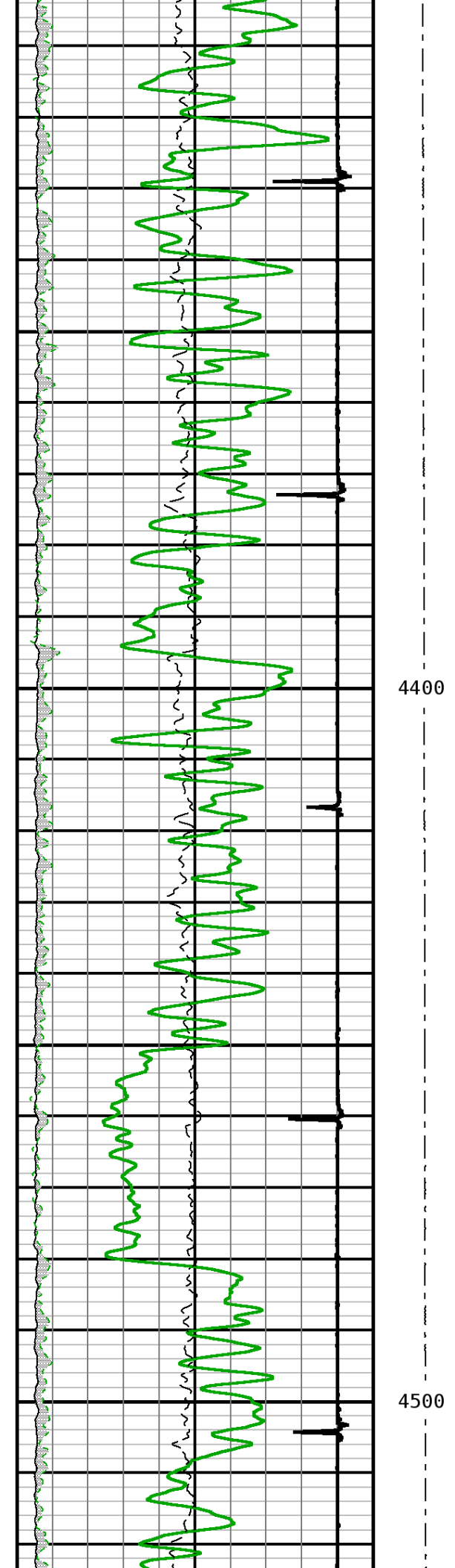
3700

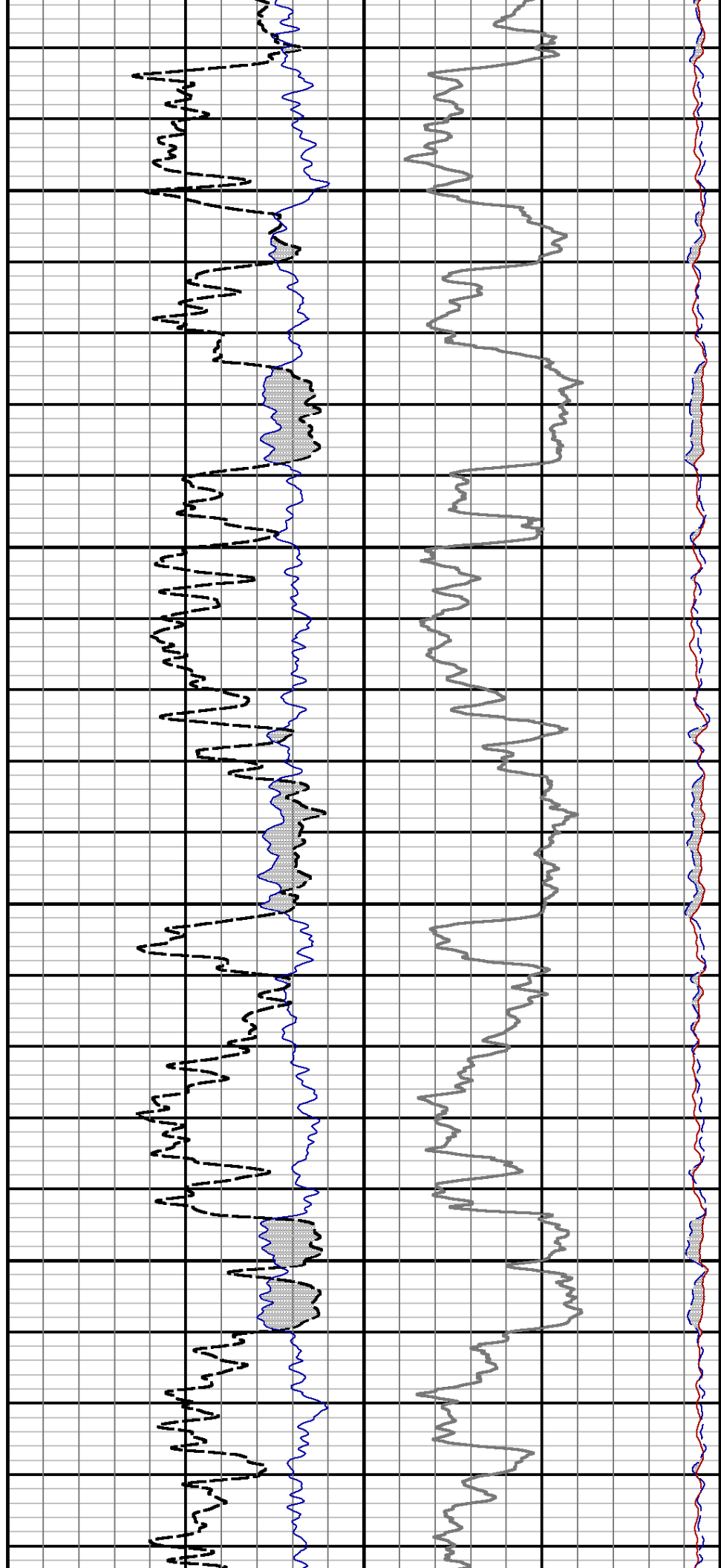
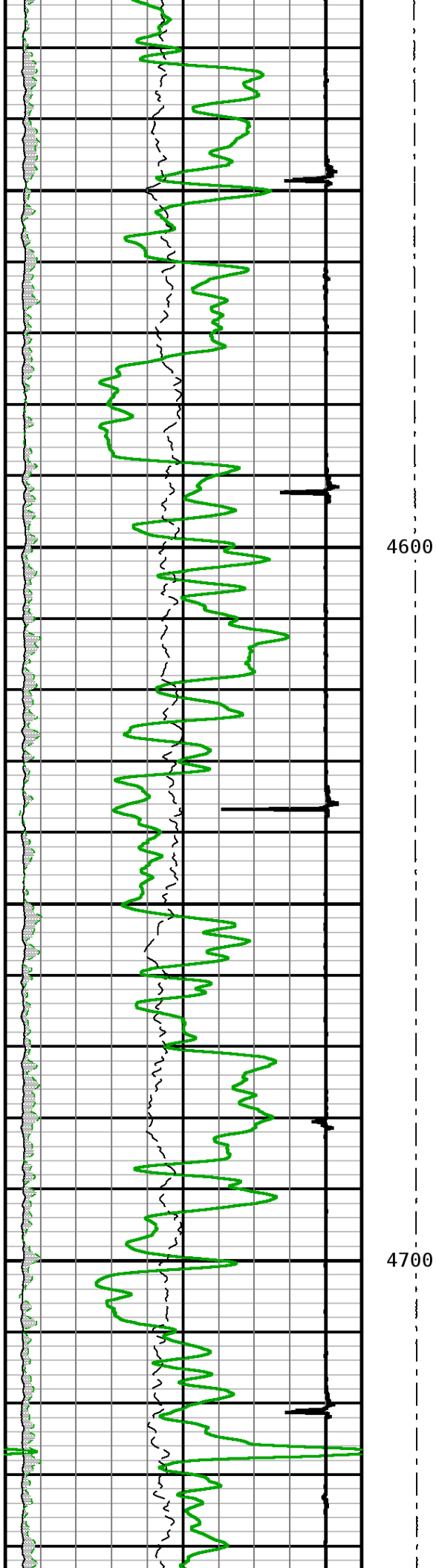
3800

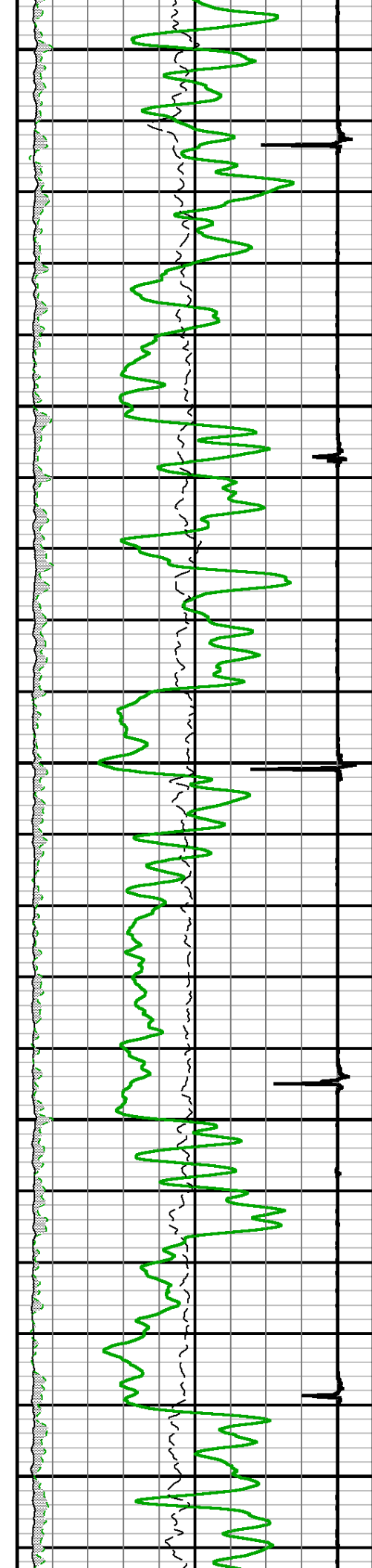






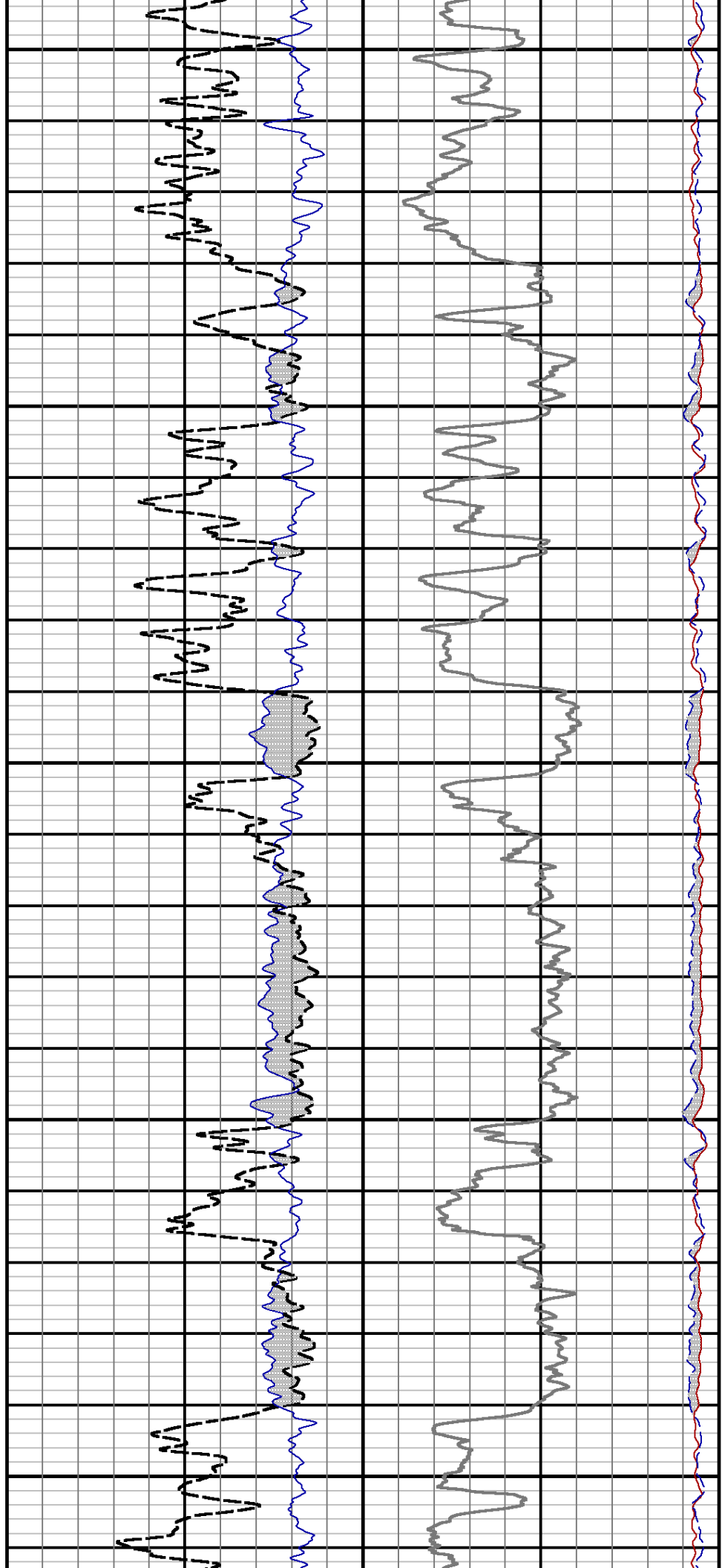


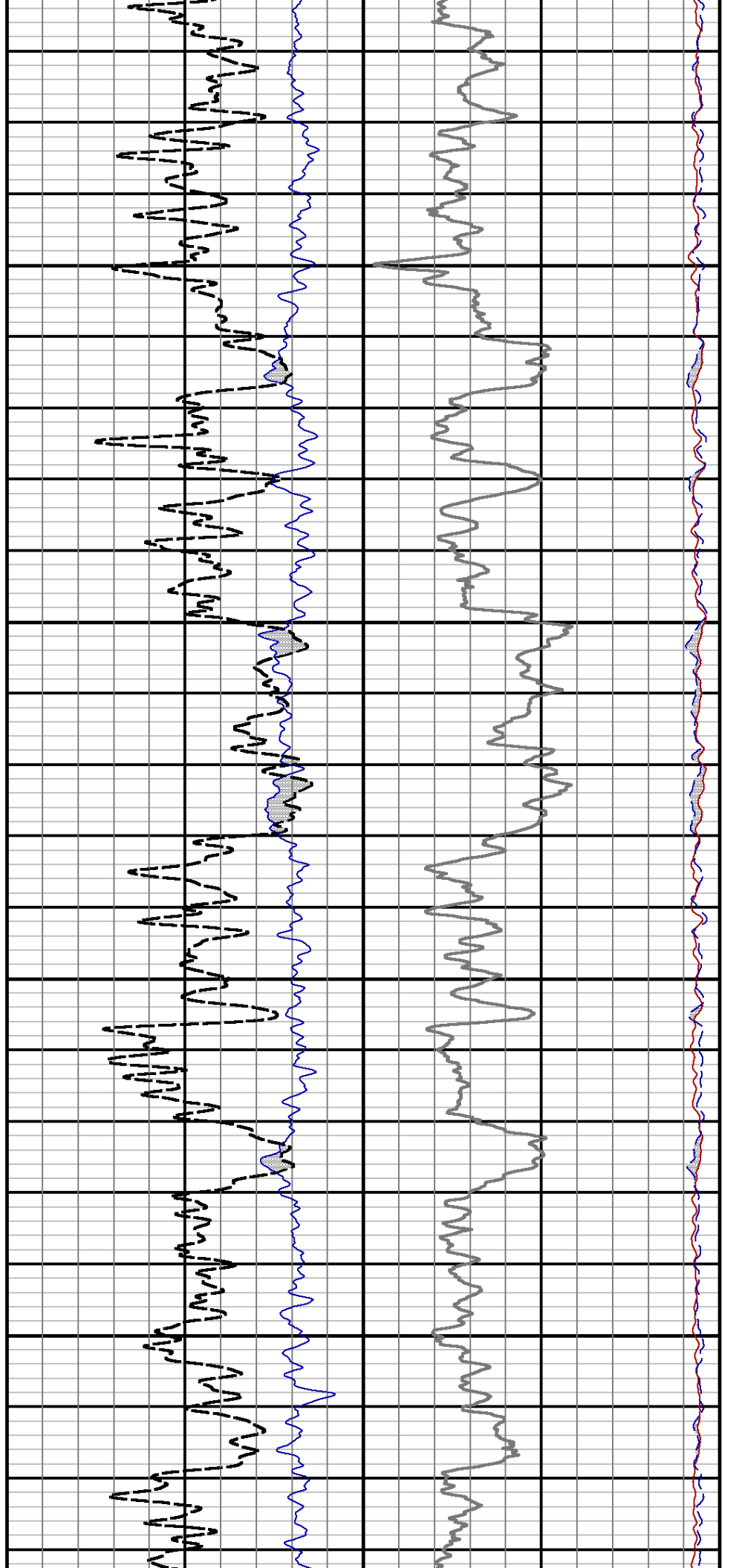
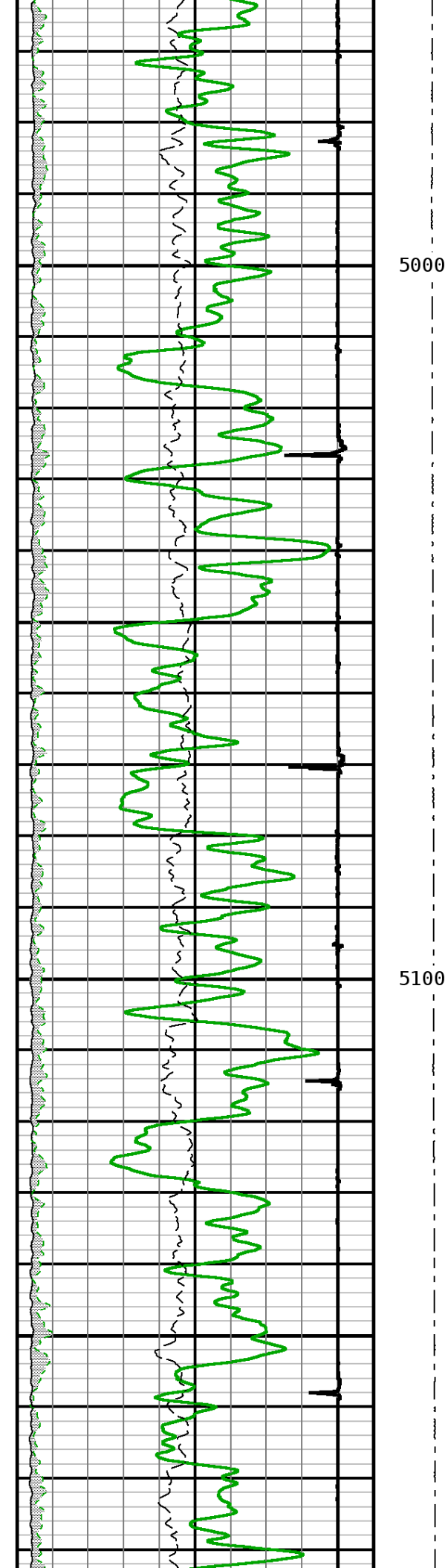


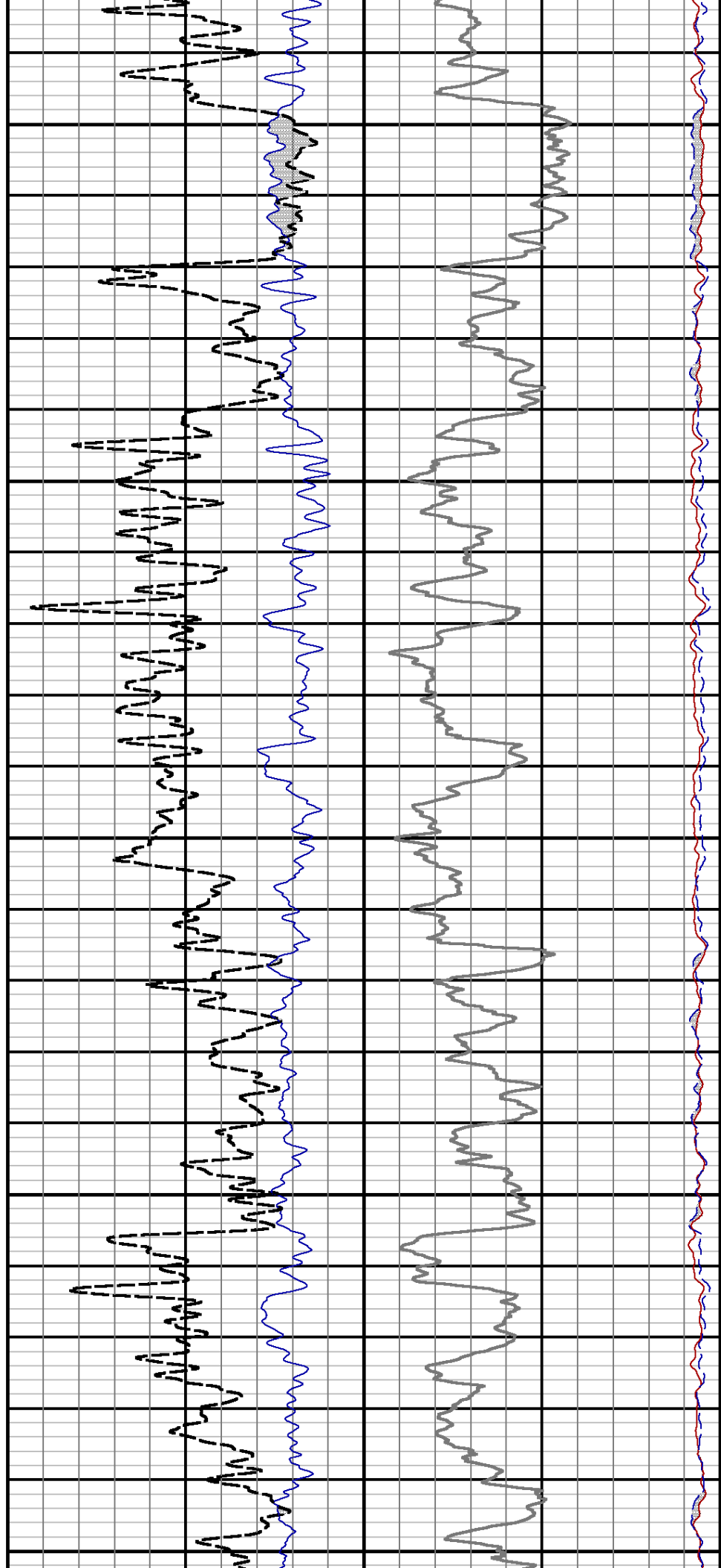
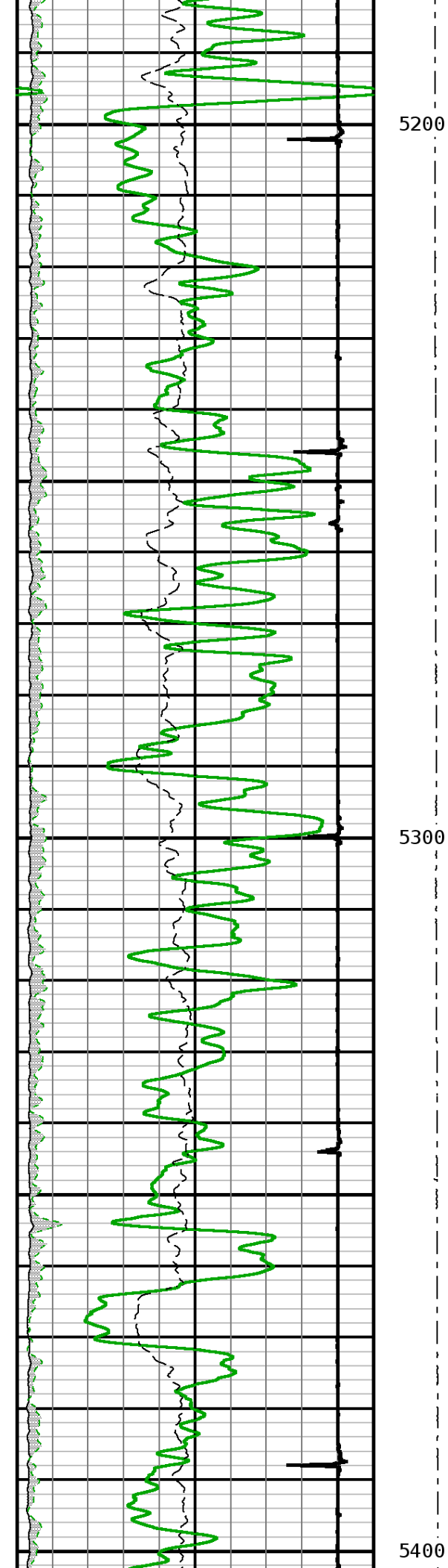


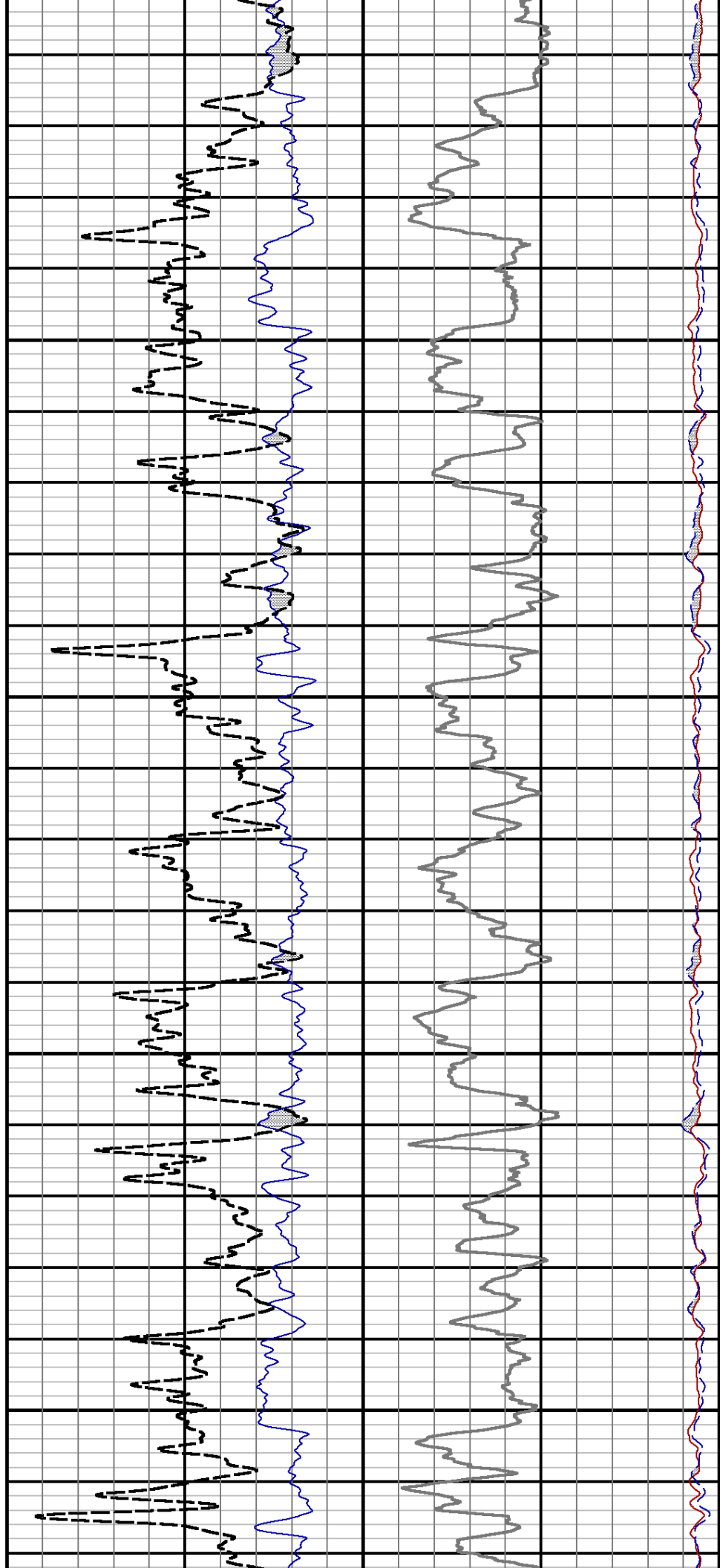
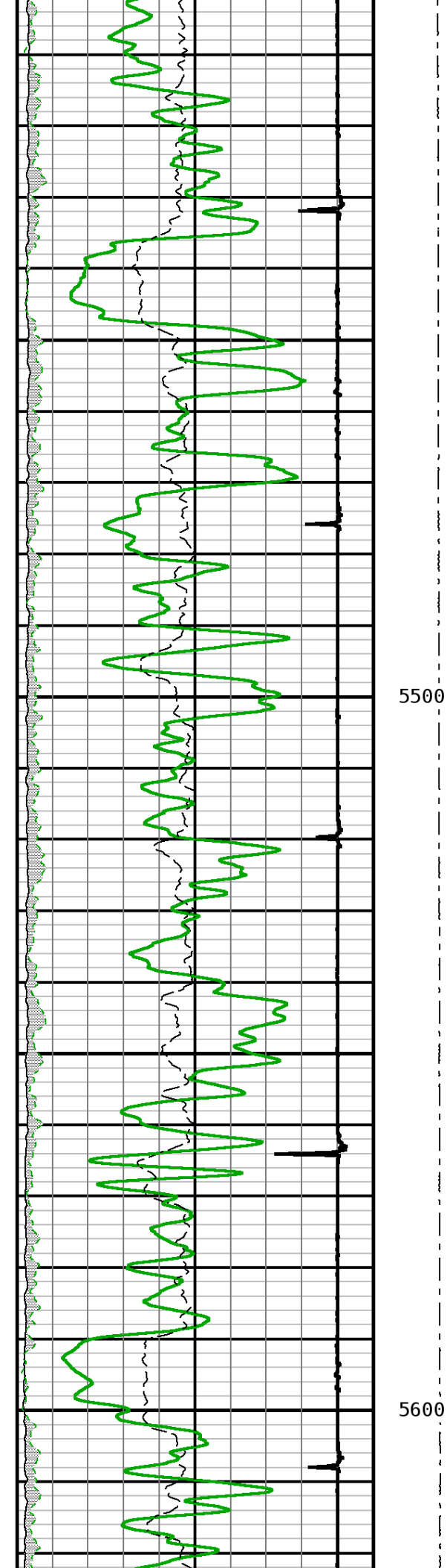
4800

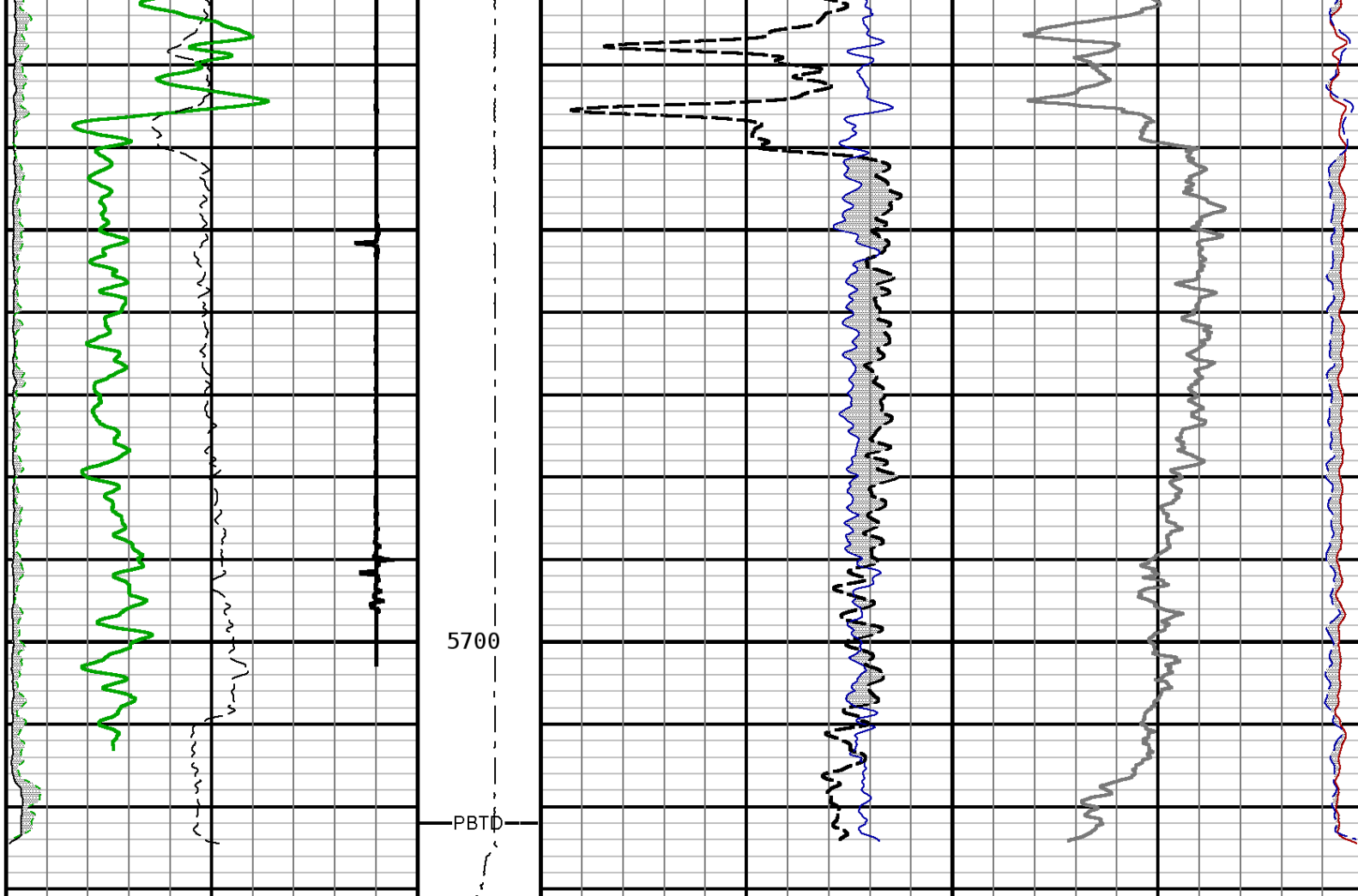
4900











BGD NEAR		Tension	Formation Sigma	
0.0	30000.0	0 2000	60.0	0.0
BGD FAR			Formation Ratio	NEAR 1
0.0	3000.0		6.0 1.0	240.0 Counts/Second 0.0
OUTPUT QUALITY			Ratio Inel N to F	FAR 1
0.0	200000.0		-1.0 14.0	40.0 Counts/Second 0.0
Gamma Ray				
0	200			
Collar Locator				
-9000	1000			
Millivolts				

START DEPTH: 5731.3 DIRECTION: UP DATE: 07/01/2014 TIME: 12:22 MODE: ORIGINAL

91408227 PNDMF

MAIN PASS

DEPTH SCALE: 5":100' LOGGED VERSION: 2012.07.18.162"

DEPTH SCALE: 5":100'

PROCESSED VERSION: 2012.07.18.162"

REPEAT PASS

91408227 PNDRF

FINISH DEPTH: 2970.3 Feet DIRECTION: UP DATE: 07/01/2014 TIME: 12:34 MODE: ORIGINAL

Collar Locator

-9000 Millivolts 1000

Gamma Ray

0 API 200

OUTPUT QUALITY

0.0 200000.0

BGD FAR

0.0 3000.0

BGD NEAR

0.0 30000.0

Tension

0 2000

Ratio Inel N to F

-1.0 14.0

Formation Ratio

6.0 1.0

FAR 1

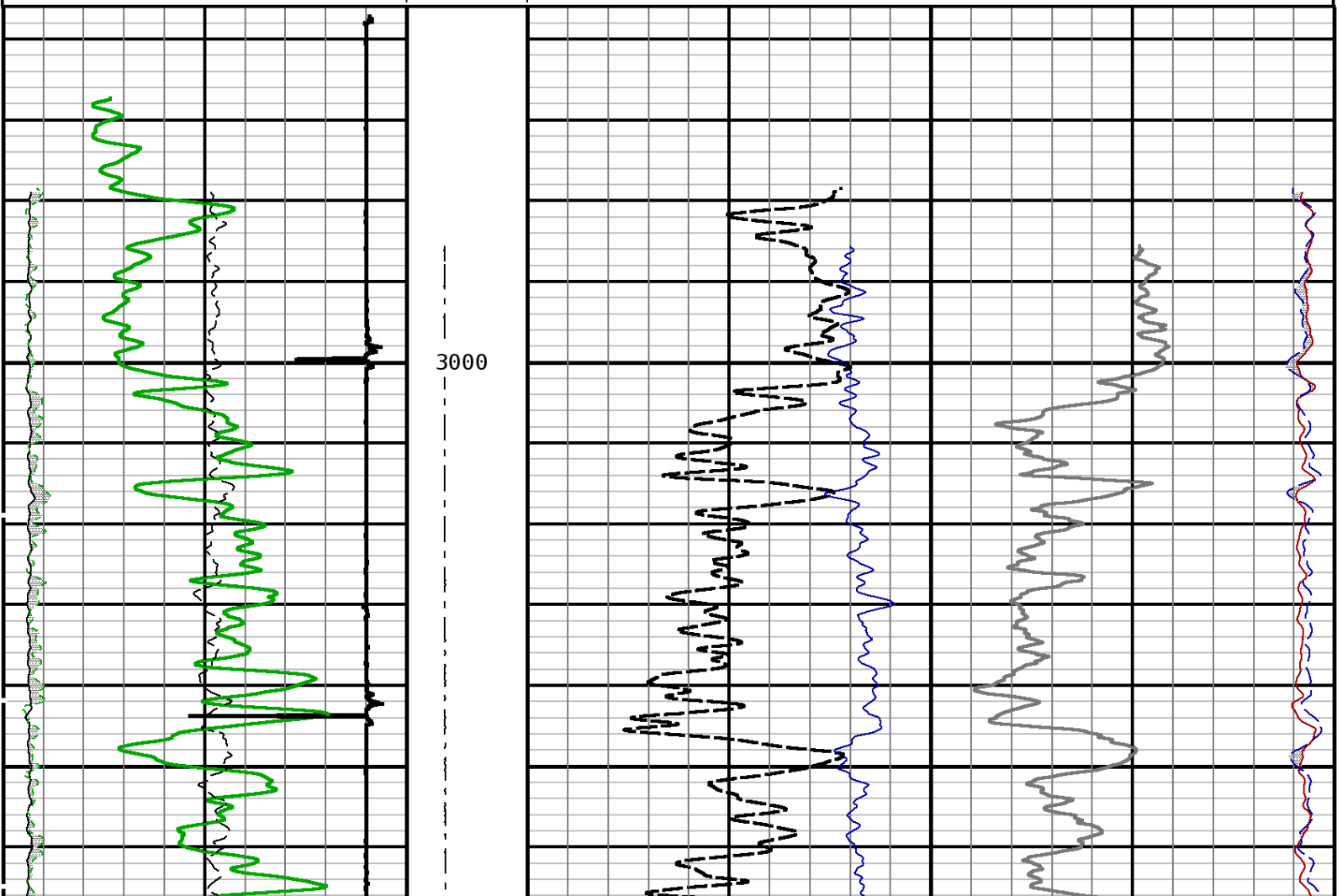
40.0 Counts/Second 0.0

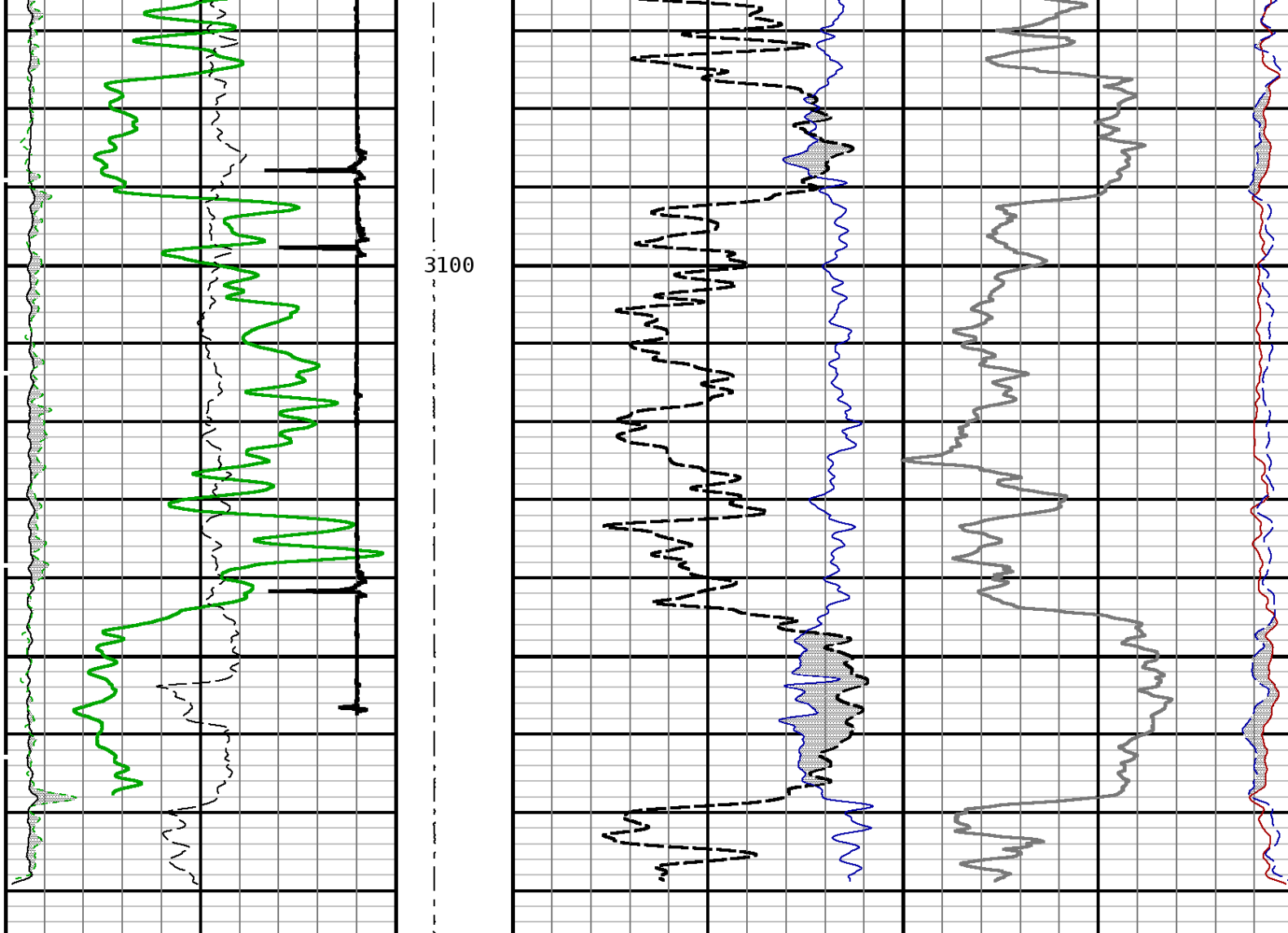
NEAR 1

240.0 Counts/Second 0.0

Formation Sigma

60.0 0.0





BGD NEAR		Tension	Formation Sigma			
0.0	30000.0	0 2000	60.0			0.0
BGD FAR			Formation Ratio		NEAR 1	
0.0	3000.0		6.0	1.0	240.0	0.0
OUTPUT QUALITY			Ratio Inel N to F		FAR 1	
0.0	200000.0		-1.0	14.0	40.0	0.0
Gamma Ray						
0	200					
Collar Locator						
-9000	1000					
Millivolts						

START DEPTH: 3185.9 DIRECTION: UP DATE: 07/01/2014 TIME: 12:34 MODE: ORIGINAL

91408227 PNDRF

1 7/16 Adapter Head

Weight 2.2 LBS.
Length 12 IN.
Max. Diameter

Total Stack Weight in air
Total Stack Length 32.0 FT.

Pulsed Neutron Processor

Weight 49 LBS.
Length 12.9 FT.
Max. Diameter 1.69 IN.

Pulsed Neutron Detectors

Weight 29.9 LBS
Length 19.0 FT.
Max. Diameter 1.69 IN.

Pulsed Neutron Generator

Weight 26 LBS.
Length 8.7 FT.
Max. Diameter 1.69 IN.

CCL 28.51 FT.

GR 19.15 FT.

FAR DETECTOR 7.66 FT
From Target ()

NEAR DETECTOR 7.02 FT
From Target ()

TARGET 7.10 FT.

1.00 in. dia.
(cm)

1.44 in. dia.
(cm)

1.69 in. dia.

1.69 in. dia.

1.69 in. dia.

COMPANY URSA OPERATING COMPANY

WELL BAT 13C-24-07-96

FIELD BATTLEMENT MESA

COUNTY GARFIELD

STATE COLORADO



Weatherford®

