

WHITING OIL & GAS CORP.

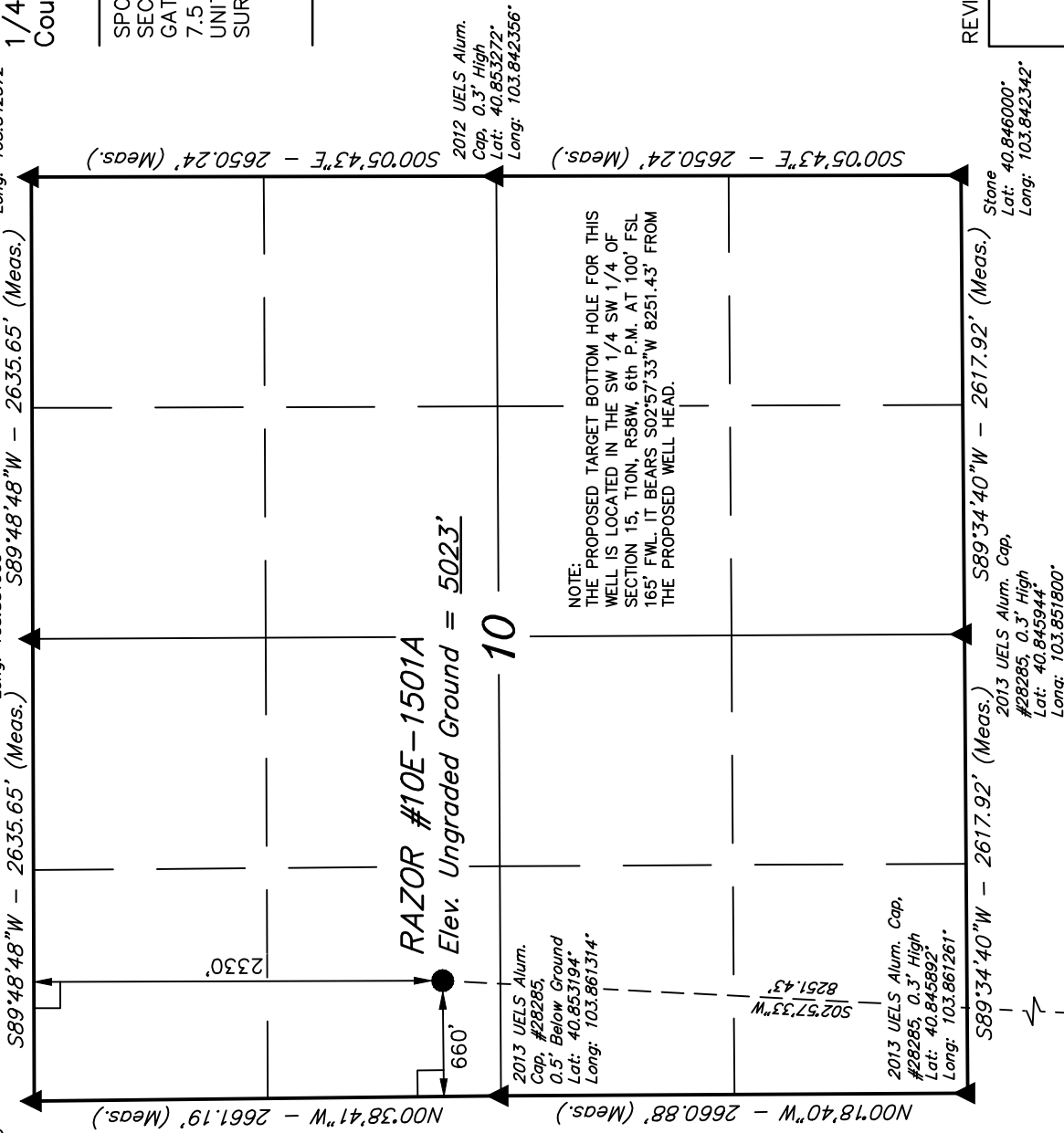
Well location, RAZOR #10E-1501A (SURFACE LOCATION), located as shown in the SW 1/4 NW 1/4 of Section 10, T10N, R58W, 6th P.M., Weld County, Colorado.

BASIS OF ELEVATION

SPOT ELEVATION LOCATED AT THE NORTHEAST CORNER OF SECTION 15, T9N, R58W, 6th P.M. TAKEN FROM THE GATEHOOK SPRING, QUADRANGLE, COLORADO, WELD COUNTY, 7.5 MINUTE QUAD (TOPOGRAPHIC MAP) PUBLISHED BY THE UNITED STATES DEPARTMENT OF THE INTERIOR, GEOLOGICAL SURVEY. SAID ELEVATION IS MARKED AS BEING 4679 FEET.

BASIS OF BEARINGS

BASIS OF BEARINGS IS A G.P.S. OBSERVATION.



○ Target Bottom Hole

LEGEND:

$\mid = 90^\circ$ SYMBOL

● = PROPOSED WELL HEAD.

▲ = SECTION CORNERS LOCATED.

PDOP = 1.6

NAD 83 (SURFACE LOCATION)

LATITUDE = 40°51'14.79" (40.854108)
LONGITUDE = 103°51'32.19" (103.858942)

NAD 27 (SURFACE LOCATION)

LATITUDE = 40°51'14.84" (40.854122)
LONGITUDE = 103°51'30.39" (103.858442)

REVISED: 07-06-13

UNTAH ENGINEERING & LAND SURVEYING
85 SOUTH 200 EAST - VERNAL, UTAH 84078

PDOP = 1.6

DATE SURVEYED:

DATE DRAWN:

9" (40 854108)

PARTY

REFERENCES

NOTATION)

WEATHER

File

4th (40.854122)
9th (103.858442)

WARM

WHITING OIL & GAS CORP.

CERTIFICATE

THIS IS TO CERTIFY THAT THE ABOVE PLAT WAS PREPARED FROM
FIELD NOTES OF ACTUAL SURVEYS MADE BY ME OR UNDER MY
SUPERVISION AND THAT THE SAME ARE TRUE AND CORRECT TO THE
BEST OF MY KNOWLEDGE AND BELIEF.

REGISTERED LAND SURVEYOR
REGISTRATION NO. 17492
STATE OF COLORADO
OFF OF 09-06-13

T10N, R58W, 6th P.M.

WHITING OIL & GAS CORP.

Well location, RAZOR #10E-1501A (TARGET BOTTOM HOLE), located as shown in the SW 1/4 SW 1/4 of Section 15, T10N, R58W, 6th P.M., Weld County, Colorado.

BASIS OF ELEVATION

SPOT ELEVATION LOCATED AT THE NORTHEAST CORNER OF SECTION 15, T9N, R58W, 6th P.M. TAKEN FROM THE GATEHOOK SPRING, QUADRANGLE, COLORADO, WELD COUNTY, 7.5 MINUTE QUAD (TOPOGRAPHIC MAP) PUBLISHED BY THE UNITED STATES DEPARTMENT OF THE INTERIOR, GEOLOGICAL SURVEY. SAID ELEVATION IS MARKED AS BEING 4679 FEET.

BASIS OF BEARINGS

BASIS OF BEARINGS IS A G.P.S. OBSERVATION.

NOTE:
THE PROPOSED TARGET BOTTOM HOLE BEARS S02°57'33"W 8251.43' FROM THE PROPOSED WELL HEAD WHICH IS LOCATED IN THE SW 1/4 NW 1/4 OF SECTION 10, T10N, R58W, 6th P.M. AT 2330' FNL 660' FWL

2013 UELS Alum.
Cap, #28285,
0.6' Below Ground
Lat: 40.836553°
Long: 103.861164°

2012 UELS Alum.
Cap, 0.3' High
Lat: 40.838750°
Long: 103.842289°

RAZOR #10E-1501A
Target Bottom Hole

2012 UELS Alum.
Cap, 0.5' Below
Ground
Lat: 40.831497°
Long: 103.842233°

2012 UELS Alum. Cap,
0.5' Below Ground
Lat: 40.831356°
Long: 103.851653°

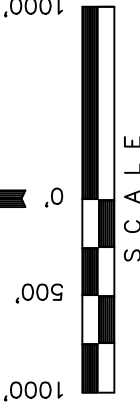
2012 UELS Alum. Cap,
0.5' Below
Ground
Lat: 40.831214°
Long: 103.861069°

LEGEND:

- 90° SYMBOL
- PROPOSED WELL HEAD.
- SECTION CORNERS LOCATED.

NAD 83 (TARGET BOTTOM HOLE)

LATITUDE = 40°49'53.39" (40.831497)
LONGITUDE = 103°51'37.71" (103.860475)
NAD 27 (TARGET BOTTOM HOLE)
LATITUDE = 40°49'53.44" (40.831511)
LONGITUDE = 103°51'35.90" (103.859972)



CERTIFICATE

THIS IS TO CERTIFY THAT THE ABOVE PLAT WAS PREPARED FROM FIELD NOTES OF ACTUAL SURVEYS MADE BY ME OR UNDER MY SUPERVISION AND THAT THE SAME ARE TRUE AND CORRECT TO THE BEST OF MY KNOWLEDGE AND BELIEF.

REGISTERED LAND SURVEYOR
STATE OF COLORADO
REGISTRATION NO. 17492
EXPIRATION DATE 09-06-13

REVISED: 07-06-13

UNTIAH ENGINEERING & LAND SURVEYING
85 SOUTH 200 EAST - VERNAL, UTAH 84078
(435) 789-1017

SCALE 1" = 1000'	DATE SURVEYED: 05-07-13	DATE DRAWN: 05-08-13
PARTY D.N. G.W. J.S.	REFERENCES G.L.O. PLAT	
WEATHER WARM	FILE	
		WHITING OIL & GAS CORP.