

# Synergy Resources

Well Name: **SRC Wiedeman 21-5-3CHZ**

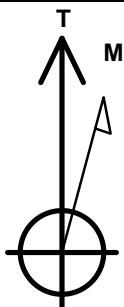
Surface Location: SRC Wiedeman Pad Sec.5-T5N-R66W  
North American Datum 1983 , US State Plane 1983 , Colorado Northern Zone

Ground Elevation: 4783.0

+N/-S	+E/-W	Northing	Easting	Latitude	Longitude	Slot
0.0	0.0	1401477.28	3194383.30	40.433356	-104.801710	
RKB - 13' WELL @ 4796.0ft (RKB - 13')						

## WELLBORE TARGET DETAILS

Name	TVD	+N/-S	+E/-W	Shape
SHL 1393'FNL & 2438'FEL, Sec. 5		0.0	0.0	Point
BHL 871'FNL & 2155'FWL, Sec.3	7223.0	592.9	9977.1	Point



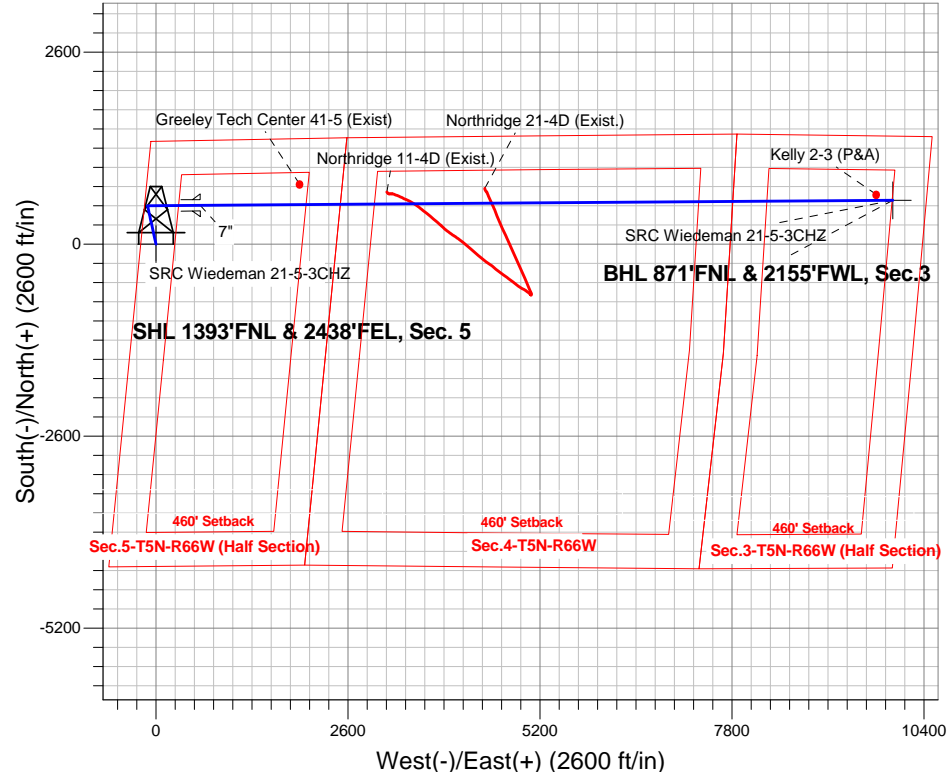
Azimuths to True North  
Magnetic North: 8.48°

Magnetic Field  
Strength: 52826.5snT  
Dip Angle: 66.97°  
Date: 6/24/2014  
Model: IGRF2010

SRC Wiedeman Pad Sec.5-T5N-R66W  
SRC Wiedeman 21-5-3CHZ  
Plan #1 (6-24-14)  
13:44, June 25 2014

## ANNOTATIONS

TVD	MD	Annotation
1000.0	1000.0	KOP #1
6506.8	6535.0	KOP #2
7223.0	7660.0	End of Build

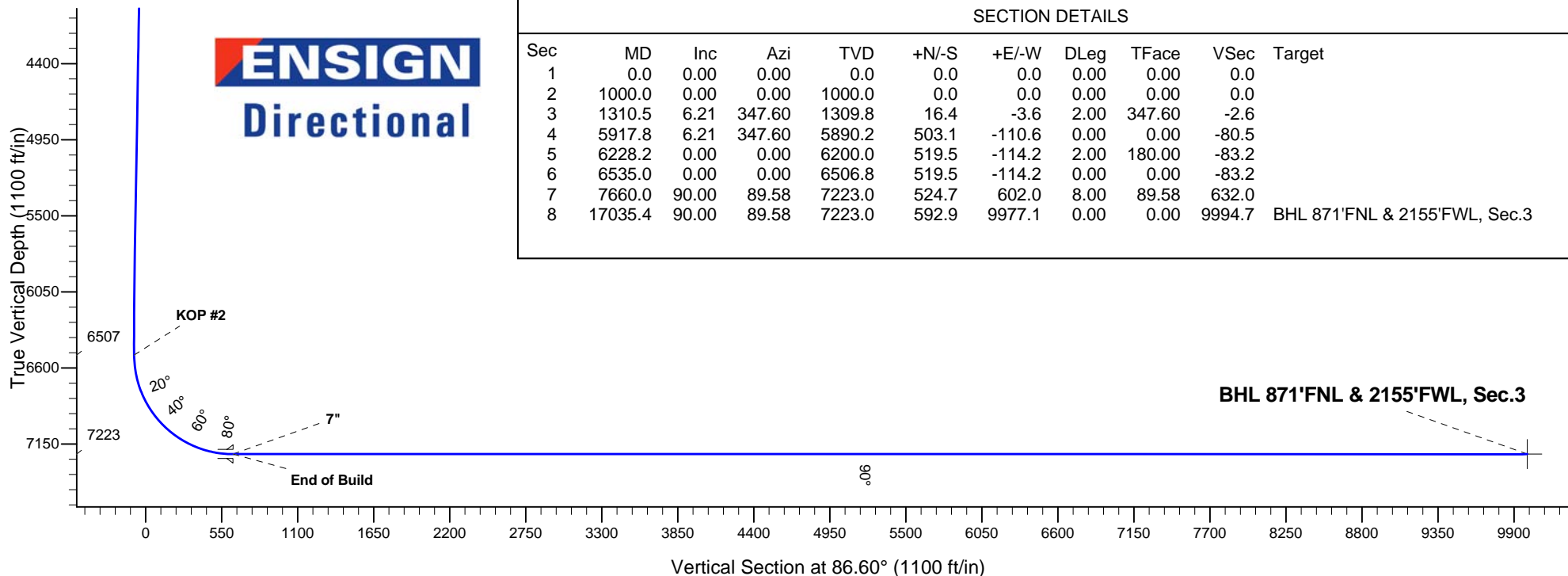


**ENSIGN**  
Directional

## SECTION DETAILS

Sec	MD	Inc	Azi	TVD	+N/-S	+E/-W	DLeg	TFace	VSec	Target
1	0.0	0.00	0.00	0.0	0.0	0.0	0.00	0.00	0.0	
2	1000.0	0.00	0.00	1000.0	0.0	0.0	0.00	0.00	0.0	
3	1310.5	6.21	347.60	1309.8	16.4	-3.6	2.00	347.60	-2.6	
4	5917.8	6.21	347.60	5890.2	503.1	-110.6	0.00	0.00	-80.5	
5	6228.2	0.00	0.00	6200.0	519.5	-114.2	2.00	180.00	-83.2	
6	6535.0	0.00	0.00	6506.8	519.5	-114.2	0.00	0.00	-83.2	
7	7660.0	90.00	89.58	7223.0	524.7	602.0	8.00	89.58	632.0	
8	17035.4	90.00	89.58	7223.0	592.9	9977.1	0.00	0.00	9994.7	BHL 871'FNL & 2155'FWL, Sec.3

**BHL 871'FNL & 2155'FWL, Sec.3**





## **Synergy Resources**

**Sec.5-T5N-R66W**

**SRC Wiedeman Pad Sec.5-T5N-R66W**

**SRC Wiedeman 21-5-3CHZ**

**Wellbore #1**

**Plan: Plan #1 (6-24-14)**

## **Standard Planning Report**

**25 June, 2014**



<b>Database:</b>	Landmark	<b>Local Co-ordinate Reference:</b>	Well SRC Wiedeman 21-5-3CHZ
<b>Company:</b>	Synergy Resources	<b>TVD Reference:</b>	WELL @ 4796.0ft (RKB - 13')
<b>Project:</b>	Sec.5-T5N-R66W	<b>MD Reference:</b>	WELL @ 4796.0ft (RKB - 13')
<b>Site:</b>	SRC Wiedeman Pad Sec.5-T5N-R66W	<b>North Reference:</b>	True
<b>Well:</b>	SRC Wiedeman 21-5-3CHZ	<b>Survey Calculation Method:</b>	Minimum Curvature
<b>Wellbore:</b>	Wellbore #1		
<b>Design:</b>	Plan #1 (6-24-14)		

<b>Project</b>	Sec.5-T5N-R66W		
<b>Map System:</b>	US State Plane 1983	<b>System Datum:</b>	Mean Sea Level
<b>Geo Datum:</b>	North American Datum 1983		Using Well Reference Point
<b>Map Zone:</b>	Colorado Northern Zone		Using geodetic scale factor

Site						SRC Wiedeman Pad Sec.5-T5N-R66W											
Site Position:						Northing:			1,401,391.96 ft			Latitude:			40.433123		
From:			Lat/Long			Easting:			3,194,327.74 ft			Longitude:			-104.801912		
Position Uncertainty:			0.0 ft			Slot Radius:			"			Grid Convergence:			0.45 °		

Well	SRC Wiedeman 21-5-3CHZ					
Well Position	+N-S	84.9 ft	Northing:	1,401,477.28 ft	Latitude:	40.433356
	+E-W	56.2 ft	Easting:	3,194,383.30 ft	Longitude:	-104.801710
Position Uncertainty		0.0 ft	Wellhead Elevation:	ft	Ground Level:	4,783.0 ft

<b>Wellbore</b>	Wellbore #1				
<b>Magnetics</b>	<b>Model Name</b>	<b>Sample Date</b>	<b>Declination (°)</b>	<b>Dip Angle (°)</b>	<b>Field Strength (nT)</b>
	IGRF2010	6/24/2014	8.48	66.97	52,827

<b>Design</b>	Plan #1 (6-24-14)			
<b>Audit Notes:</b>				
<b>Version:</b>	<b>Phase:</b>	PROTOTYPE	<b>Tie On Depth:</b>	0.0
<b>Vertical Section:</b>	<b>Depth From (TVD) (ft)</b>	<b>+N/-S (ft)</b>	<b>+E/-W (ft)</b>	<b>Direction (°)</b>
	0.0	0.0	0.0	86.60

<b>Plan Sections</b>										
Measured Depth (ft)	Inclination (°)	Azimuth (°)	Vertical Depth (ft)	+N/-S (ft)	+E/-W (ft)	Dogleg Rate (°/100ft)	Build Rate (°/100ft)	Turn Rate (°/100ft)	TFO (°)	Target
0.0	0.00	0.00	0.0	0.0	0.0	0.00	0.00	0.00	0.00	
1,000.0	0.00	0.00	1,000.0	0.0	0.0	0.00	0.00	0.00	0.00	
1,310.5	6.21	347.60	1,309.8	16.4	-3.6	2.00	2.00	0.00	347.60	
5,917.8	6.21	347.60	5,890.2	503.1	-110.6	0.00	0.00	0.00	0.00	
6,228.2	0.00	0.00	6,200.0	519.5	-114.2	2.00	-2.00	0.00	180.00	
6,535.0	0.00	0.00	6,506.8	519.5	-114.2	0.00	0.00	0.00	0.00	
7,660.0	90.00	89.58	7,223.0	524.7	602.0	8.00	8.00	0.00	89.58	
17,035.4	90.00	89.58	7,223.0	592.9	9,977.1	0.00	0.00	0.00	0.00	BHL 871'FNL & 215

<b>Database:</b>	Landmark	<b>Local Co-ordinate Reference:</b>	Well SRC Wiedeman 21-5-3CHZ
<b>Company:</b>	Synergy Resources	<b>TVD Reference:</b>	WELL @ 4796.0ft (RKB - 13')
<b>Project:</b>	Sec.5-T5N-R66W	<b>MD Reference:</b>	WELL @ 4796.0ft (RKB - 13')
<b>Site:</b>	SRC Wiedeman Pad Sec.5-T5N-R66W	<b>North Reference:</b>	True
<b>Well:</b>	SRC Wiedeman 21-5-3CHZ	<b>Survey Calculation Method:</b>	Minimum Curvature
<b>Wellbore:</b>	Wellbore #1		
<b>Design:</b>	Plan #1 (6-24-14)		

Planned Survey									
Measured Depth (ft)	Inclination (°)	Azimuth (°)	Vertical Depth (ft)	+N/-S (ft)	+E/-W (ft)	Vertical Section (ft)	Dogleg Rate (°/100ft)	Build Rate (°/100ft)	Turn Rate (°/100ft)
0.0	0.00	0.00	0.0	0.0	0.0	0.0	0.00	0.00	0.00
1.0	0.00	0.00	1.0	0.0	0.0	0.0	0.00	0.00	0.00
<b>SHL 1393'FNL &amp; 2438'FEL, Sec. 5</b>									
100.0	0.00	0.00	100.0	0.0	0.0	0.0	0.00	0.00	0.00
200.0	0.00	0.00	200.0	0.0	0.0	0.0	0.00	0.00	0.00
300.0	0.00	0.00	300.0	0.0	0.0	0.0	0.00	0.00	0.00
400.0	0.00	0.00	400.0	0.0	0.0	0.0	0.00	0.00	0.00
500.0	0.00	0.00	500.0	0.0	0.0	0.0	0.00	0.00	0.00
600.0	0.00	0.00	600.0	0.0	0.0	0.0	0.00	0.00	0.00
700.0	0.00	0.00	700.0	0.0	0.0	0.0	0.00	0.00	0.00
800.0	0.00	0.00	800.0	0.0	0.0	0.0	0.00	0.00	0.00
900.0	0.00	0.00	900.0	0.0	0.0	0.0	0.00	0.00	0.00
1,000.0	0.00	0.00	1,000.0	0.0	0.0	0.0	0.00	0.00	0.00
<b>KOP #1</b>									
1,100.0	2.00	347.60	1,100.0	1.7	-0.4	-0.3	2.00	2.00	0.00
1,200.0	4.00	347.60	1,199.8	6.8	-1.5	-1.1	2.00	2.00	0.00
1,300.0	6.00	347.60	1,299.5	15.3	-3.4	-2.5	2.00	2.00	0.00
1,310.5	6.21	347.60	1,309.8	16.4	-3.6	-2.6	2.00	2.00	0.00
1,400.0	6.21	347.60	1,398.9	25.9	-5.7	-4.1	0.00	0.00	0.00
1,500.0	6.21	347.60	1,498.3	36.4	-8.0	-5.8	0.00	0.00	0.00
1,600.0	6.21	347.60	1,597.7	47.0	-10.3	-7.5	0.00	0.00	0.00
1,700.0	6.21	347.60	1,697.1	57.6	-12.7	-9.2	0.00	0.00	0.00
1,800.0	6.21	347.60	1,796.5	68.1	-15.0	-10.9	0.00	0.00	0.00
1,900.0	6.21	347.60	1,895.9	78.7	-17.3	-12.6	0.00	0.00	0.00
2,000.0	6.21	347.60	1,995.3	89.3	-19.6	-14.3	0.00	0.00	0.00
2,100.0	6.21	347.60	2,094.8	99.8	-21.9	-16.0	0.00	0.00	0.00
2,200.0	6.21	347.60	2,194.2	110.4	-24.3	-17.7	0.00	0.00	0.00
2,300.0	6.21	347.60	2,293.6	120.9	-26.6	-19.4	0.00	0.00	0.00
2,400.0	6.21	347.60	2,393.0	131.5	-28.9	-21.1	0.00	0.00	0.00
2,500.0	6.21	347.60	2,492.4	142.1	-31.2	-22.7	0.00	0.00	0.00
2,600.0	6.21	347.60	2,591.8	152.6	-33.6	-24.4	0.00	0.00	0.00
2,700.0	6.21	347.60	2,691.2	163.2	-35.9	-26.1	0.00	0.00	0.00
2,800.0	6.21	347.60	2,790.7	173.8	-38.2	-27.8	0.00	0.00	0.00
2,900.0	6.21	347.60	2,890.1	184.3	-40.5	-29.5	0.00	0.00	0.00
3,000.0	6.21	347.60	2,989.5	194.9	-42.8	-31.2	0.00	0.00	0.00
3,100.0	6.21	347.60	3,088.9	205.5	-45.2	-32.9	0.00	0.00	0.00
3,200.0	6.21	347.60	3,188.3	216.0	-47.5	-34.6	0.00	0.00	0.00
3,300.0	6.21	347.60	3,287.7	226.6	-49.8	-36.3	0.00	0.00	0.00
3,400.0	6.21	347.60	3,387.1	237.1	-52.1	-38.0	0.00	0.00	0.00
3,500.0	6.21	347.60	3,486.5	247.7	-54.5	-39.7	0.00	0.00	0.00
3,600.0	6.21	347.60	3,586.0	258.3	-56.8	-41.4	0.00	0.00	0.00
3,700.0	6.21	347.60	3,685.4	268.8	-59.1	-43.0	0.00	0.00	0.00
3,800.0	6.21	347.60	3,784.8	279.4	-61.4	-44.7	0.00	0.00	0.00
3,900.0	6.21	347.60	3,884.2	290.0	-63.7	-46.4	0.00	0.00	0.00
4,000.0	6.21	347.60	3,983.6	300.5	-66.1	-48.1	0.00	0.00	0.00
4,100.0	6.21	347.60	4,083.0	311.1	-68.4	-49.8	0.00	0.00	0.00
4,200.0	6.21	347.60	4,182.4	321.7	-70.7	-51.5	0.00	0.00	0.00
4,300.0	6.21	347.60	4,281.9	332.2	-73.0	-53.2	0.00	0.00	0.00
4,400.0	6.21	347.60	4,381.3	342.8	-75.3	-54.9	0.00	0.00	0.00
4,500.0	6.21	347.60	4,480.7	353.3	-77.7	-56.6	0.00	0.00	0.00
4,600.0	6.21	347.60	4,580.1	363.9	-80.0	-58.3	0.00	0.00	0.00
4,700.0	6.21	347.60	4,679.5	374.5	-82.3	-60.0	0.00	0.00	0.00
4,800.0	6.21	347.60	4,778.9	385.0	-84.6	-61.6	0.00	0.00	0.00
4,900.0	6.21	347.60	4,878.3	395.6	-87.0	-63.3	0.00	0.00	0.00

<b>Database:</b>	Landmark	<b>Local Co-ordinate Reference:</b>	Well SRC Wiedeman 21-5-3CHZ
<b>Company:</b>	Synergy Resources	<b>TVD Reference:</b>	WELL @ 4796.0ft (RKB - 13')
<b>Project:</b>	Sec.5-T5N-R66W	<b>MD Reference:</b>	WELL @ 4796.0ft (RKB - 13')
<b>Site:</b>	SRC Wiedeman Pad Sec.5-T5N-R66W	<b>North Reference:</b>	True
<b>Well:</b>	SRC Wiedeman 21-5-3CHZ	<b>Survey Calculation Method:</b>	Minimum Curvature
<b>Wellbore:</b>	Wellbore #1		
<b>Design:</b>	Plan #1 (6-24-14)		

Planned Survey									
Measured Depth (ft)	Inclination (°)	Azimuth (°)	Vertical Depth (ft)	+N/-S (ft)	+E/-W (ft)	Vertical Section (ft)	Dogleg Rate (°/100ft)	Build Rate (°/100ft)	Turn Rate (°/100ft)
5,000.0	6.21	347.60	4,977.7	406.2	-89.3	-65.0	0.00	0.00	0.00
5,100.0	6.21	347.60	5,077.2	416.7	-91.6	-66.7	0.00	0.00	0.00
5,200.0	6.21	347.60	5,176.6	427.3	-93.9	-68.4	0.00	0.00	0.00
5,300.0	6.21	347.60	5,276.0	437.8	-96.2	-70.1	0.00	0.00	0.00
5,400.0	6.21	347.60	5,375.4	448.4	-98.6	-71.8	0.00	0.00	0.00
5,500.0	6.21	347.60	5,474.8	459.0	-100.9	-73.5	0.00	0.00	0.00
5,600.0	6.21	347.60	5,574.2	469.5	-103.2	-75.2	0.00	0.00	0.00
5,700.0	6.21	347.60	5,673.6	480.1	-105.5	-76.9	0.00	0.00	0.00
5,800.0	6.21	347.60	5,773.1	490.7	-107.9	-78.6	0.00	0.00	0.00
5,900.0	6.21	347.60	5,872.5	501.2	-110.2	-80.2	0.00	0.00	0.00
5,917.8	6.21	347.60	5,890.2	503.1	-110.6	-80.5	0.00	0.00	0.00
6,000.0	4.56	347.60	5,972.0	510.6	-112.2	-81.8	2.00	-2.00	0.00
6,100.0	2.56	347.60	6,071.8	516.7	-113.6	-82.7	2.00	-2.00	0.00
6,200.0	0.56	347.60	6,171.8	519.4	-114.2	-83.2	2.00	-2.00	0.00
6,228.2	0.00	0.00	6,200.0	519.5	-114.2	-83.2	2.00	-2.00	0.00
6,300.0	0.00	0.00	6,271.8	519.5	-114.2	-83.2	0.00	0.00	0.00
6,400.0	0.00	0.00	6,371.8	519.5	-114.2	-83.2	0.00	0.00	0.00
6,500.0	0.00	0.00	6,471.8	519.5	-114.2	-83.2	0.00	0.00	0.00
6,535.0	0.00	0.00	6,506.8	519.5	-114.2	-83.2	0.00	0.00	0.00
<b>KOP #2</b>									
6,600.0	5.20	89.58	6,571.7	519.5	-111.3	-80.2	7.99	7.99	0.00
6,700.0	13.20	89.58	6,670.3	519.7	-95.3	-64.3	8.00	8.00	0.00
6,800.0	21.20	89.58	6,765.8	519.9	-65.7	-34.8	8.00	8.00	0.00
6,900.0	29.20	89.58	6,856.2	520.2	-23.2	7.7	8.00	8.00	0.00
7,000.0	37.20	89.58	6,939.8	520.6	31.5	62.3	8.00	8.00	0.00
7,100.0	45.20	89.58	7,015.0	521.1	97.3	128.0	8.00	8.00	0.00
7,200.0	53.20	89.58	7,080.3	521.6	172.9	203.6	8.00	8.00	0.00
7,300.0	61.20	89.58	7,134.4	522.2	256.9	287.4	8.00	8.00	0.00
7,400.0	69.20	89.58	7,176.3	522.9	347.6	378.0	8.00	8.00	0.00
7,500.0	77.20	89.58	7,205.2	523.6	443.3	473.5	8.00	8.00	0.00
7,600.0	85.20	89.58	7,220.5	524.3	542.0	572.2	8.00	8.00	0.00
7,660.0	90.00	89.58	7,223.0	524.7	601.9	632.0	8.00	8.00	0.00
<b>End of Build - 7"</b>									
7,700.0	90.00	89.58	7,223.0	525.0	641.9	671.9	0.01	0.01	0.00
7,800.0	90.00	89.58	7,223.0	525.8	741.9	771.8	0.00	0.00	0.00
7,900.0	90.00	89.58	7,223.0	526.5	841.9	871.7	0.00	0.00	0.00
8,000.0	90.00	89.58	7,223.0	527.2	941.9	971.5	0.00	0.00	0.00
8,100.0	90.00	89.58	7,223.0	527.9	1,041.9	1,071.4	0.00	0.00	0.00
8,200.0	90.00	89.58	7,223.0	528.7	1,141.9	1,171.3	0.00	0.00	0.00
8,300.0	90.00	89.58	7,223.0	529.4	1,241.9	1,271.1	0.00	0.00	0.00
8,400.0	90.00	89.58	7,223.0	530.1	1,341.9	1,371.0	0.00	0.00	0.00
8,500.0	90.00	89.58	7,223.0	530.8	1,441.9	1,470.9	0.00	0.00	0.00
8,600.0	90.00	89.58	7,223.0	531.6	1,541.9	1,570.7	0.00	0.00	0.00
8,700.0	90.00	89.58	7,223.0	532.3	1,641.9	1,670.6	0.00	0.00	0.00
8,800.0	90.00	89.58	7,223.0	533.0	1,741.9	1,770.5	0.00	0.00	0.00
8,900.0	90.00	89.58	7,223.0	533.8	1,841.9	1,870.3	0.00	0.00	0.00
9,000.0	90.00	89.58	7,223.0	534.5	1,941.9	1,970.2	0.00	0.00	0.00
9,100.0	90.00	89.58	7,223.0	535.2	2,041.9	2,070.1	0.00	0.00	0.00
9,200.0	90.00	89.58	7,223.0	535.9	2,141.9	2,169.9	0.00	0.00	0.00
9,300.0	90.00	89.58	7,223.0	536.7	2,241.9	2,269.8	0.00	0.00	0.00
9,400.0	90.00	89.58	7,223.0	537.4	2,341.9	2,369.6	0.00	0.00	0.00
9,500.0	90.00	89.58	7,223.0	538.1	2,441.9	2,469.5	0.00	0.00	0.00
9,600.0	90.00	89.58	7,223.0	538.8	2,541.9	2,569.4	0.00	0.00	0.00
9,700.0	90.00	89.58	7,223.0	539.6	2,641.9	2,669.2	0.00	0.00	0.00

<b>Database:</b>	Landmark	<b>Local Co-ordinate Reference:</b>	Well SRC Wiedeman 21-5-3CHZ
<b>Company:</b>	Synergy Resources	<b>TVD Reference:</b>	WELL @ 4796.0ft (RKB - 13')
<b>Project:</b>	Sec.5-T5N-R66W	<b>MD Reference:</b>	WELL @ 4796.0ft (RKB - 13')
<b>Site:</b>	SRC Wiedeman Pad Sec.5-T5N-R66W	<b>North Reference:</b>	True
<b>Well:</b>	SRC Wiedeman 21-5-3CHZ	<b>Survey Calculation Method:</b>	Minimum Curvature
<b>Wellbore:</b>	Wellbore #1		
<b>Design:</b>	Plan #1 (6-24-14)		

Planned Survey									
Measured Depth (ft)	Inclination (°)	Azimuth (°)	Vertical Depth (ft)	+N/-S (ft)	+E/-W (ft)	Vertical Section (ft)	Dogleg Rate (°/100ft)	Build Rate (°/100ft)	Turn Rate (°/100ft)
9,800.0	90.00	89.58	7,223.0	540.3	2,741.9	2,769.1	0.00	0.00	0.00
9,900.0	90.00	89.58	7,223.0	541.0	2,841.9	2,869.0	0.00	0.00	0.00
10,000.0	90.00	89.58	7,223.0	541.8	2,941.9	2,968.8	0.00	0.00	0.00
10,100.0	90.00	89.58	7,223.0	542.5	3,041.9	3,068.7	0.00	0.00	0.00
10,200.0	90.00	89.58	7,223.0	543.2	3,141.9	3,168.6	0.00	0.00	0.00
10,300.0	90.00	89.58	7,223.0	543.9	3,241.9	3,268.4	0.00	0.00	0.00
10,400.0	90.00	89.58	7,223.0	544.7	3,341.9	3,368.3	0.00	0.00	0.00
10,500.0	90.00	89.58	7,223.0	545.4	3,441.9	3,468.2	0.00	0.00	0.00
10,600.0	90.00	89.58	7,223.0	546.1	3,541.9	3,568.0	0.00	0.00	0.00
10,700.0	90.00	89.58	7,223.0	546.9	3,641.9	3,667.9	0.00	0.00	0.00
10,800.0	90.00	89.58	7,223.0	547.6	3,741.9	3,767.7	0.00	0.00	0.00
10,900.0	90.00	89.58	7,223.0	548.3	3,841.8	3,867.6	0.00	0.00	0.00
11,000.0	90.00	89.58	7,223.0	549.0	3,941.8	3,967.5	0.00	0.00	0.00
11,100.0	90.00	89.58	7,223.0	549.8	4,041.8	4,067.3	0.00	0.00	0.00
11,200.0	90.00	89.58	7,223.0	550.5	4,141.8	4,167.2	0.00	0.00	0.00
11,300.0	90.00	89.58	7,223.0	551.2	4,241.8	4,267.1	0.00	0.00	0.00
11,400.0	90.00	89.58	7,223.0	551.9	4,341.8	4,366.9	0.00	0.00	0.00
11,500.0	90.00	89.58	7,223.0	552.7	4,441.8	4,466.8	0.00	0.00	0.00
11,600.0	90.00	89.58	7,223.0	553.4	4,541.8	4,566.7	0.00	0.00	0.00
11,700.0	90.00	89.58	7,223.0	554.1	4,641.8	4,666.5	0.00	0.00	0.00
11,800.0	90.00	89.58	7,223.0	554.9	4,741.8	4,766.4	0.00	0.00	0.00
11,900.0	90.00	89.58	7,223.0	555.6	4,841.8	4,866.3	0.00	0.00	0.00
12,000.0	90.00	89.58	7,223.0	556.3	4,941.8	4,966.1	0.00	0.00	0.00
12,100.0	90.00	89.58	7,223.0	557.0	5,041.8	5,066.0	0.00	0.00	0.00
12,200.0	90.00	89.58	7,223.0	557.8	5,141.8	5,165.8	0.00	0.00	0.00
12,300.0	90.00	89.58	7,223.0	558.5	5,241.8	5,265.7	0.00	0.00	0.00
12,400.0	90.00	89.58	7,223.0	559.2	5,341.8	5,365.6	0.00	0.00	0.00
12,500.0	90.00	89.58	7,223.0	559.9	5,441.8	5,465.4	0.00	0.00	0.00
12,600.0	90.00	89.58	7,223.0	560.7	5,541.8	5,565.3	0.00	0.00	0.00
12,700.0	90.00	89.58	7,223.0	561.4	5,641.8	5,665.2	0.00	0.00	0.00
12,800.0	90.00	89.58	7,223.0	562.1	5,741.8	5,765.0	0.00	0.00	0.00
12,900.0	90.00	89.58	7,223.0	562.9	5,841.8	5,864.9	0.00	0.00	0.00
13,000.0	90.00	89.58	7,223.0	563.6	5,941.8	5,964.8	0.00	0.00	0.00
13,100.0	90.00	89.58	7,223.0	564.3	6,041.8	6,064.6	0.00	0.00	0.00
13,200.0	90.00	89.58	7,223.0	565.0	6,141.8	6,164.5	0.00	0.00	0.00
13,300.0	90.00	89.58	7,223.0	565.8	6,241.8	6,264.4	0.00	0.00	0.00
13,400.0	90.00	89.58	7,223.0	566.5	6,341.8	6,364.2	0.00	0.00	0.00
13,500.0	90.00	89.58	7,223.0	567.2	6,441.8	6,464.1	0.00	0.00	0.00
13,600.0	90.00	89.58	7,223.0	567.9	6,541.8	6,563.9	0.00	0.00	0.00
13,700.0	90.00	89.58	7,223.0	568.7	6,641.8	6,663.8	0.00	0.00	0.00
13,800.0	90.00	89.58	7,223.0	569.4	6,741.8	6,763.7	0.00	0.00	0.00
13,900.0	90.00	89.58	7,223.0	570.1	6,841.8	6,863.5	0.00	0.00	0.00
14,000.0	90.00	89.58	7,223.0	570.9	6,941.8	6,963.4	0.00	0.00	0.00
14,100.0	90.00	89.58	7,223.0	571.6	7,041.8	7,063.3	0.00	0.00	0.00
14,200.0	90.00	89.58	7,223.0	572.3	7,141.8	7,163.1	0.00	0.00	0.00
14,300.0	90.00	89.58	7,223.0	573.0	7,241.8	7,263.0	0.00	0.00	0.00
14,400.0	90.00	89.58	7,223.0	573.8	7,341.8	7,362.9	0.00	0.00	0.00
14,500.0	90.00	89.58	7,223.0	574.5	7,441.8	7,462.7	0.00	0.00	0.00
14,600.0	90.00	89.58	7,223.0	575.2	7,541.8	7,562.6	0.00	0.00	0.00
14,700.0	90.00	89.58	7,223.0	576.0	7,641.7	7,662.5	0.00	0.00	0.00
14,800.0	90.00	89.58	7,223.0	576.7	7,741.7	7,762.3	0.00	0.00	0.00
14,900.0	90.00	89.58	7,223.0	577.4	7,841.7	7,862.2	0.00	0.00	0.00
15,000.0	90.00	89.58	7,223.0	578.1	7,941.7	7,962.1	0.00	0.00	0.00
15,100.0	90.00	89.58	7,223.0	578.9	8,041.7	8,061.9	0.00	0.00	0.00

**Database:** Landmark  
**Company:** Synergy Resources  
**Project:** Sec.5-T5N-R66W  
**Site:** SRC Wiedeman Pad Sec.5-T5N-R66W  
**Well:** SRC Wiedeman 21-5-3CHZ  
**Wellbore:** Wellbore #1  
**Design:** Plan #1 (6-24-14)

**Local Co-ordinate Reference:** Well SRC Wiedeman 21-5-3CHZ  
**TVD Reference:** WELL @ 4796.0ft (RKB - 13')  
**MD Reference:** WELL @ 4796.0ft (RKB - 13')  
**North Reference:** True  
**Survey Calculation Method:** Minimum Curvature

**Planned Survey**

Measured Depth (ft)	Inclination (°)	Azimuth (°)	Vertical Depth (ft)	+N/-S (ft)	+E/-W (ft)	Vertical Section (ft)	Dogleg Rate (°/100ft)	Build Rate (°/100ft)	Turn Rate (°/100ft)
15,200.0	90.00	89.58	7,223.0	579.6	8,141.7	8,161.8	0.00	0.00	0.00
15,300.0	90.00	89.58	7,223.0	580.3	8,241.7	8,261.6	0.00	0.00	0.00
15,400.0	90.00	89.58	7,223.0	581.0	8,341.7	8,361.5	0.00	0.00	0.00
15,500.0	90.00	89.58	7,223.0	581.8	8,441.7	8,461.4	0.00	0.00	0.00
15,600.0	90.00	89.58	7,223.0	582.5	8,541.7	8,561.2	0.00	0.00	0.00
15,700.0	90.00	89.58	7,223.0	583.2	8,641.7	8,661.1	0.00	0.00	0.00
15,800.0	90.00	89.58	7,223.0	584.0	8,741.7	8,761.0	0.00	0.00	0.00
15,900.0	90.00	89.58	7,223.0	584.7	8,841.7	8,860.8	0.00	0.00	0.00
16,000.0	90.00	89.58	7,223.0	585.4	8,941.7	8,960.7	0.00	0.00	0.00
16,100.0	90.00	89.58	7,223.0	586.1	9,041.7	9,060.6	0.00	0.00	0.00
16,200.0	90.00	89.58	7,223.0	586.9	9,141.7	9,160.4	0.00	0.00	0.00
16,300.0	90.00	89.58	7,223.0	587.6	9,241.7	9,260.3	0.00	0.00	0.00
16,400.0	90.00	89.58	7,223.0	588.3	9,341.7	9,360.2	0.00	0.00	0.00
16,500.0	90.00	89.58	7,223.0	589.0	9,441.7	9,460.0	0.00	0.00	0.00
16,600.0	90.00	89.58	7,223.0	589.8	9,541.7	9,559.9	0.00	0.00	0.00
16,700.0	90.00	89.58	7,223.0	590.5	9,641.7	9,659.7	0.00	0.00	0.00
16,800.0	90.00	89.58	7,223.0	591.2	9,741.7	9,759.6	0.00	0.00	0.00
16,900.0	90.00	89.58	7,223.0	592.0	9,841.7	9,859.5	0.00	0.00	0.00
17,000.0	90.00	89.58	7,223.0	592.7	9,941.7	9,959.3	0.00	0.00	0.00
17,035.4	90.00	89.58	7,223.0	592.9	9,977.1	9,994.7	0.00	0.00	0.00

**BHL 871'FNL & 2155'FWL, Sec.3**
**Targets**
**Target Name**

- hit/miss target - Shape	Dip Angle (°)	Dip Dir. (°)	TVD (ft)	+N/-S (ft)	+E/-W (ft)	Northing (ft)	Easting (ft)	Latitude	Longitude
BHL 871'FNL & 2155' - plan hits target center - Point	0.00	0.00	7,223.0	592.9	9,977.1	1,402,148.74	3,204,354.98	40.434978	-104.765870
SHL 1393'FNL & 2438' - plan hits target center - Point	0.00	0.00	1.0	0.0	0.0	1,401,477.29	3,194,383.30	40.433356	-104.801710

**Casing Points**

Measured Depth (ft)	Vertical Depth (ft)	Name	Casing Diameter (")	Hole Diameter (")
7,660.0	7,223.0	7"	7	7-1/2

**Plan Annotations**

Measured Depth (ft)	Vertical Depth (ft)	Local Coordinates +N/-S (ft)	+E/-W (ft)	Comment
1,000.0	1,000.0	0.0	0.0	KOP #1
6,535.0	6,506.8	519.5	-114.2	KOP #2
7,660.0	7,223.0	524.7	601.9	End of Build

## **Synergy Resources**

**Sec.5-T5N-R66W**

**SRC Wiedeman Pad Sec.5-T5N-R66W**

**SRC Wiedeman 21-5-3CHZ**

**Wellbore #1**

**Plan #1 (6-24-14)**

## **Anticollision Report**

**25 June, 2014**



<b>Company:</b>	Synergy Resources	<b>Local Co-ordinate Reference:</b>	Well SRC Wiedeman 21-5-3CHZ
<b>Project:</b>	Sec.5-T5N-R66W	<b>TVD Reference:</b>	WELL @ 4796.0ft (RKB - 13')
<b>Reference Site:</b>	SRC Wiedeman Pad Sec.5-T5N-R66W	<b>MD Reference:</b>	WELL @ 4796.0ft (RKB - 13')
<b>Site Error:</b>	0.0ft	<b>North Reference:</b>	True
<b>Reference Well:</b>	SRC Wiedeman 21-5-3CHZ	<b>Survey Calculation Method:</b>	Minimum Curvature
<b>Well Error:</b>	0.0ft	<b>Output errors are at</b>	2.00 sigma
<b>Reference Wellbore</b>	Wellbore #1	<b>Database:</b>	Landmark
<b>Reference Design:</b>	Plan #1 (6-24-14)	<b>Offset TVD Reference:</b>	Offset Datum

<b>Reference</b>	Plan #1 (6-24-14)		
<b>Filter type:</b>	NO GLOBAL FILTER: Using user defined selection & filtering criteria		
<b>Interpolation Method:</b>	Stations	<b>Error Model:</b>	ISCWSA
<b>Depth Range:</b>	Unlimited	<b>Scan Method:</b>	Closest Approach 3D
<b>Results Limited by:</b>	Maximum center-center distance of 1,000.0ft	<b>Error Surface:</b>	Elliptical Conic
<b>Warning Levels Evaluated at:</b>	2.00 Sigma		

<b>Survey Tool Program</b>	<b>Date</b> 6/25/2014			
<b>From (ft)</b>	<b>To (ft)</b>	<b>Survey (Wellbore)</b>	<b>Tool Name</b>	<b>Description</b>
0.0	17,034.7	Plan #1 (6-24-14) (Wellbore #1)	MWD	MWD - Standard

Summary						
Site Name	Reference Measured Depth (ft)	Offset Measured Depth (ft)	Distance Between Centres (ft)	Distance Between Ellipses (ft)	Separation Factor	Warning
Offset Well - Wellbore - Design						
Existing Wells - Sec.4-T5N-R66W						
Greeley Tech Center 41-5 (Exist) - Wellbore #1 - Wellbor	9,002.3	2,427.0	276.9	171.8	2.633	CC, ES, SF
Kelly 2-3 (P&A) - Wellbore #1 - Wellbore #1	16,812.7	2,427.0	80.2	-242.1	0.249	Level 1, CC, ES, SF
Northridge Pad Sec.4-T5N-R66W						
Northridge 11-4D (Exist.) - Wellbore #1 - Wellbore #1	10,190.3	7,697.0	156.2	25.2	1.192	Level 2, CC, ES
Northridge 11-4D (Exist.) - Wellbore #1 - Wellbore #1	10,200.0	7,696.8	156.5	25.2	1.192	Level 2, SF
Northridge 21-4D (Exist.) - Wellbore #1 - Wellbore #1	11,513.8	7,395.8	189.5	42.8	1.292	Level 3, CC, ES, SF
SRC Wiedeman Pad Sec.5-T5N-R66W						
SRC Wiedeman 21-5-3NHZ - Wellbore #1 - Plan #1 (6-2	500.0	500.0	15.0	13.0	7.430	CC
SRC Wiedeman 21-5-3NHZ - Wellbore #1 - Plan #1 (6-2	17,035.4	16,865.8	302.7	-169.4	0.641	Level 1, ES, SF
SRC Wiedeman A-5-3CHZ - Wellbore #1 - Plan #1 (6-24	1,000.0	1,000.0	30.0	25.7	7.026	CC
SRC Wiedeman A-5-3CHZ - Wellbore #1 - Plan #1 (6-24	17,000.0	17,021.1	439.5	-119.4	0.786	Level 1, ES, SF
SRC Wiedeman A-5-3NHZ - Wellbore #1 - Plan #1 (6-24	1,000.0	1,000.0	15.0	10.7	3.513	CC
SRC Wiedeman A-5-3NHZ - Wellbore #1 - Plan #1 (6-24	17,010.3	16,853.2	277.6	-171.7	0.618	Level 1, ES, SF

<b>Offset Design</b> Existing Wells - Sec.4-T5N-R66W - Greeley Tech Center 41-5 (Exist) - Wellbore #1 - Wellbore #1											
Survey Program: 7811-UNKNOWN											
Reference Offset Semi Major Axis											
Measured Depth (ft)	Vertical Depth (ft)	Measured Depth (ft)	Vertical Depth (ft)	Reference (ft)	Offset (ft)	Highside Toolface (°)	Offset Wellbore Centre +N/-S (ft)	Offset Wellbore Centre +E/-W (ft)	Distance Between Centres (ft)	Distance Between Ellipses (ft)	Minimum Separation (ft)
8,100.0	7,223.0	2,427.0	2,427.0	33.7	48.5	-90.00	811.4	1,942.2	943.9	862.0	81.84
8,200.0	7,223.0	2,427.0	2,427.0	36.1	48.5	-90.00	811.4	1,942.2	848.8	764.5	84.29
8,300.0	7,223.0	2,427.0	2,427.0	38.6	48.5	-90.00	811.4	1,942.2	755.0	668.2	86.79
8,400.0	7,223.0	2,427.0	2,427.0	41.1	48.5	-90.00	811.4	1,942.2	662.9	573.6	89.33
8,500.0	7,223.0	2,427.0	2,427.0	43.7	48.5	-90.00	811.4	1,942.2	573.6	481.7	91.90
8,600.0	7,223.0	2,427.0	2,427.0	46.3	48.5	-90.00	811.4	1,942.2	488.4	393.9	94.50
8,700.0	7,223.0	2,427.0	2,427.0	48.9	48.5	-90.00	811.4	1,942.2	410.0	312.9	97.12
8,800.0	7,223.0	2,427.0	2,427.0	51.5	48.5	-90.00	811.4	1,942.2	343.0	243.2	99.77
8,900.0	7,223.0	2,427.0	2,427.0	54.1	48.5	-90.00	811.4	1,942.2	295.2	192.8	102.43
9,000.0	7,223.0	2,427.0	2,427.0	56.8	48.5	-90.00	811.4	1,942.2	276.9	171.8	105.10
9,002.3	7,223.0	2,427.0	2,427.0	56.9	48.5	-90.00	811.4	1,942.2	276.9	171.8	105.16
9,100.0	7,223.0	2,427.0	2,427.0	59.5	48.5	-90.00	811.4	1,942.2	293.6	185.8	107.78
9,200.0	7,223.0	2,427.0	2,427.0	62.2	48.5	-90.00	811.4	1,942.2	340.2	229.7	110.48
											2.633
											CC, ES, SF
											2.724
											3.079

CC - Min centre to center distance or convergent point, SF - min separation factor, ES - min ellipse separation

<b>Company:</b>	Synergy Resources	<b>Local Co-ordinate Reference:</b>	Well SRC Wiedeman 21-5-3CHZ
<b>Project:</b>	Sec.5-T5N-R66W	<b>TVD Reference:</b>	WELL @ 4796.0ft (RKB - 13')
<b>Reference Site:</b>	SRC Wiedeman Pad Sec.5-T5N-R66W	<b>MD Reference:</b>	WELL @ 4796.0ft (RKB - 13')
<b>Site Error:</b>	0.0ft	<b>North Reference:</b>	True
<b>Reference Well:</b>	SRC Wiedeman 21-5-3CHZ	<b>Survey Calculation Method:</b>	Minimum Curvature
<b>Well Error:</b>	0.0ft	<b>Output errors are at</b>	2.00 sigma
<b>Reference Wellbore</b>	Wellbore #1	<b>Database:</b>	Landmark
<b>Reference Design:</b>	Plan #1 (6-24-14)	<b>Offset TVD Reference:</b>	Offset Datum

<b>Offset Design</b> Existing Wells - Sec.4-T5N-R66W - Greeley Tech Center 41-5 (Exist) - Wellbore #1 - Wellbore #1													<b>Offset Site Error:</b>	0.0 ft
Survey Program: 7811-UNKNOWN													<b>Offset Well Error:</b>	0.0 ft
Reference	Offset	Semi Major Axis			Distance								Warning	
Measured Depth (ft)	Vertical Depth (ft)	Measured Depth (ft)	Vertical Depth (ft)	Reference (ft)	Offset (ft)	Highside Toolface (°)	Offset Wellbore Centre +N/-S (ft)	+E/-W (ft)	Between Centres (ft)	Between Ellipses (ft)	Minimum Separation (ft)	Separation Factor		
9,300.0	7,223.0	2,427.0	2,427.0	64.9	48.5	-90.00	811.4	1,942.2	406.5	293.4	113.19	3.592		
9,400.0	7,223.0	2,427.0	2,427.0	67.6	48.5	-90.00	811.4	1,942.2	484.6	368.7	115.90	4.181		
9,500.0	7,223.0	2,427.0	2,427.0	70.3	48.5	-90.00	811.4	1,942.2	569.5	450.9	118.62	4.801		
9,600.0	7,223.0	2,427.0	2,427.0	73.0	48.5	-90.00	811.4	1,942.2	658.7	537.3	121.35	5.428		
9,700.0	7,223.0	2,427.0	2,427.0	75.7	48.5	-90.00	811.4	1,942.2	750.6	626.5	124.08	6.049		
9,800.0	7,223.0	2,427.0	2,427.0	78.5	48.5	-90.00	811.4	1,942.2	844.4	717.5	126.82	6.658		
9,900.0	7,223.0	2,427.0	2,427.0	81.2	48.5	-90.00	811.4	1,942.2	939.4	809.8	129.57	7.250		

<b>Company:</b>	Synergy Resources	<b>Local Co-ordinate Reference:</b>	Well SRC Wiedeman 21-5-3CHZ
<b>Project:</b>	Sec.5-T5N-R66W	<b>TVD Reference:</b>	WELL @ 4796.0ft (RKB - 13')
<b>Reference Site:</b>	SRC Wiedeman Pad Sec.5-T5N-R66W	<b>MD Reference:</b>	WELL @ 4796.0ft (RKB - 13')
<b>Site Error:</b>	0.0ft	<b>North Reference:</b>	True
<b>Reference Well:</b>	SRC Wiedeman 21-5-3CHZ	<b>Survey Calculation Method:</b>	Minimum Curvature
<b>Well Error:</b>	0.0ft	<b>Output errors are at</b>	2.00 sigma
<b>Reference Wellbore</b>	Wellbore #1	<b>Database:</b>	Landmark
<b>Reference Design:</b>	Plan #1 (6-24-14)	<b>Offset TVD Reference:</b>	Offset Datum

<b>Offset Design</b> Existing Wells - Sec.4-T5N-R66W - Kelly 2-3 (P&A) - Wellbore #1 - Wellbore #1													<b>Offset Site Error:</b>	0.0 ft
Survey Program: 7403-UNKNOWN													<b>Offset Well Error:</b>	0.0 ft
Reference	Offset	Semi Major Axis		Distance										
Measured Depth (ft)	Vertical Depth (ft)	Measured Depth (ft)	Vertical Depth (ft)	Reference (ft)	Offset (ft)	Highside Toolface (°)	Offset Wellbore Centre +N/-S (ft)	+E/-W (ft)	Between Centres (ft)	Between Ellipses (ft)	Minimum Separation (ft)	Separation Factor	Warning	
15,900.0	7,223.0	2,427.0	2,427.0	248.3	48.5	-90.00	671.5	9,753.8	916.2	619.4	296.79	3.087		
16,000.0	7,223.0	2,427.0	2,427.0	251.1	48.5	-90.00	671.5	9,753.8	816.6	517.0	299.59	2.726		
16,100.0	7,223.0	2,427.0	2,427.0	253.9	48.5	-90.00	671.5	9,753.8	717.2	414.8	302.39	2.372		
16,200.0	7,223.0	2,427.0	2,427.0	256.7	48.5	-90.00	671.5	9,753.8	617.9	312.7	305.19	2.025		
16,300.0	7,223.0	2,427.0	2,427.0	259.5	48.5	-90.00	671.5	9,753.8	518.9	210.9	308.00	1.685		
16,400.0	7,223.0	2,427.0	2,427.0	262.3	48.5	-90.00	671.5	9,753.8	420.4	109.6	310.80	1.353	Level 3	
16,500.0	7,223.0	2,427.0	2,427.0	265.1	48.5	-90.00	671.5	9,753.8	322.8	9.2	313.60	1.029	Level 2	
16,600.0	7,223.0	2,427.0	2,427.0	267.9	48.5	-90.00	671.5	9,753.8	227.3	-89.1	316.40	0.718	Level 1	
16,700.0	7,223.0	2,427.0	2,427.0	270.7	48.5	-90.00	671.5	9,753.8	138.3	-180.9	319.20	0.433	Level 1	
16,800.0	7,223.0	2,427.0	2,427.0	273.5	48.5	-90.00	671.5	9,753.8	81.2	-240.8	322.00	0.252	Level 1	
16,812.7	7,223.0	2,427.0	2,427.0	273.9	48.5	-90.00	671.5	9,753.8	80.2	-242.1	322.36	0.249	Level 1, CC, ES, SF	
16,900.0	7,223.0	2,427.0	2,427.0	276.3	48.5	-90.00	671.5	9,753.8	118.6	-206.2	324.80	0.365	Level 1	
17,000.0	7,223.0	2,427.0	2,427.0	279.1	48.5	-90.00	671.5	9,753.8	203.8	-123.8	327.61	0.622	Level 1	
17,035.4	7,223.0	2,427.0	2,427.0	279.8	48.5	-90.00	671.5	9,753.8	236.7	-91.5	328.25	0.721	Level 1	

<b>Company:</b>	Synergy Resources	<b>Local Co-ordinate Reference:</b>	Well SRC Wiedeman 21-5-3CHZ
<b>Project:</b>	Sec.5-T5N-R66W	<b>TVD Reference:</b>	WELL @ 4796.0ft (RKB - 13')
<b>Reference Site:</b>	SRC Wiedeman Pad Sec.5-T5N-R66W	<b>MD Reference:</b>	WELL @ 4796.0ft (RKB - 13')
<b>Site Error:</b>	0.0ft	<b>North Reference:</b>	True
<b>Reference Well:</b>	SRC Wiedeman 21-5-3CHZ	<b>Survey Calculation Method:</b>	Minimum Curvature
<b>Well Error:</b>	0.0ft	<b>Output errors are at</b>	2.00 sigma
<b>Reference Wellbore</b>	Wellbore #1	<b>Database:</b>	Landmark
<b>Reference Design:</b>	Plan #1 (6-24-14)	<b>Offset TVD Reference:</b>	Offset Datum

<b>Offset Design</b> Northridge Pad Sec.4-T5N-R66W - Northridge 11-4D (Exist.) - Wellbore #1 - Wellbore #1												<b>Offset Site Error:</b>	0.0 ft
Survey Program: 147-MWD												<b>Offset Well Error:</b>	0.0 ft
Reference		Offset		Semi Major Axis			Distance						
Measured Depth (ft)	Vertical Depth (ft)	Measured Depth (ft)	Vertical Depth (ft)	Reference (ft)	Offset (ft)	Highside Toolface (°)	Offset Wellbore Centre +N/-S (ft)	+E/-W (ft)	Between Centres (ft)	Between Ellipses (ft)	Minimum Separation (ft)	Separation Factor	Warning
9,300.0	7,223.0	7,716.8	7,197.4	64.9	49.4	-96.34	699.6	3,130.6	903.7	798.1	105.65	8.554	
9,400.0	7,223.0	7,714.7	7,195.3	67.6	49.4	-95.58	699.6	3,130.7	805.4	696.9	108.53	7.421	
9,500.0	7,223.0	7,712.6	7,193.2	70.3	49.4	-94.81	699.6	3,130.7	707.6	596.2	111.41	6.351	
9,600.0	7,223.0	7,710.4	7,191.0	73.0	49.4	-94.03	699.5	3,130.8	610.5	496.2	114.29	5.342	
9,700.0	7,223.0	7,708.3	7,188.8	75.7	49.4	-93.23	699.5	3,130.8	514.5	397.3	117.16	4.391	
9,800.0	7,223.0	7,706.0	7,186.6	78.5	49.4	-92.42	699.5	3,130.9	420.3	300.3	120.03	3.502	
9,900.0	7,223.0	7,703.8	7,184.3	81.2	49.4	-91.59	699.4	3,130.9	329.6	206.8	122.88	2.683	
10,000.0	7,223.0	7,701.5	7,182.0	83.9	49.4	-90.75	699.4	3,131.0	246.2	120.5	125.71	1.958	
10,100.0	7,223.0	7,699.1	7,179.7	86.7	49.4	-89.90	699.4	3,131.0	180.4	51.9	128.52	1.404	Level 3
10,190.3	7,223.0	7,697.0	7,177.6	89.2	49.4	-89.11	699.3	3,131.1	156.2	25.2	131.05	1.192	Level 2, CC, ES
10,200.0	7,223.0	7,696.8	7,177.3	89.4	49.4	-89.03	699.3	3,131.1	156.5	25.2	131.31	1.192	Level 2, SF
10,300.0	7,223.0	7,694.4	7,174.9	92.2	49.4	-88.14	699.3	3,131.1	190.8	56.8	134.08	1.423	Level 3
10,400.0	7,223.0	7,691.9	7,172.5	95.0	49.4	-87.25	699.2	3,131.2	261.4	124.6	136.81	1.911	
10,500.0	7,223.0	7,689.4	7,170.0	97.7	49.4	-86.34	699.2	3,131.3	346.7	207.2	139.52	2.485	
10,600.0	7,223.0	7,686.9	7,167.5	100.5	49.4	-85.41	699.2	3,131.3	438.3	296.1	142.18	3.083	
10,700.0	7,223.0	7,684.3	7,164.9	103.2	49.4	-84.47	699.1	3,131.4	532.9	388.1	144.81	3.680	
10,800.0	7,223.0	7,681.7	7,162.3	106.0	49.4	-83.52	699.1	3,131.5	629.2	481.8	147.38	4.269	
10,900.0	7,223.0	7,679.1	7,159.6	108.8	49.4	-82.56	699.0	3,131.5	726.4	576.5	149.92	4.846	
11,000.0	7,223.0	7,676.4	7,156.9	111.5	49.4	-81.58	699.0	3,131.6	824.3	671.9	152.39	5.409	
11,100.0	7,223.0	7,673.6	7,154.2	114.3	49.4	-80.59	699.0	3,131.7	922.7	767.9	154.81	5.960	

<b>Company:</b>	Synergy Resources	<b>Local Co-ordinate Reference:</b>	Well SRC Wiedeman 21-5-3CHZ
<b>Project:</b>	Sec.5-T5N-R66W	<b>TVD Reference:</b>	WELL @ 4796.0ft (RKB - 13')
<b>Reference Site:</b>	SRC Wiedeman Pad Sec.5-T5N-R66W	<b>MD Reference:</b>	WELL @ 4796.0ft (RKB - 13')
<b>Site Error:</b>	0.0ft	<b>North Reference:</b>	True
<b>Reference Well:</b>	SRC Wiedeman 21-5-3CHZ	<b>Survey Calculation Method:</b>	Minimum Curvature
<b>Well Error:</b>	0.0ft	<b>Output errors are at</b>	2.00 sigma
<b>Reference Wellbore</b>	Wellbore #1	<b>Database:</b>	Landmark
<b>Reference Design:</b>	Plan #1 (6-24-14)	<b>Offset TVD Reference:</b>	Offset Datum

<b>Offset Design</b> Northridge Pad Sec.4-T5N-R66W - Northridge 21-4D (Exist.) - Wellbore #1 - Wellbore #1												<b>Offset Site Error:</b>	0.0 ft
Survey Program: 150-MWD												<b>Offset Well Error:</b>	0.0 ft
Reference		Offset		Semi Major Axis			Distance						
Measured Depth (ft)	Vertical Depth (ft)	Measured Depth (ft)	Vertical Depth (ft)	Reference (ft)	Offset (ft)	Highside Toolface (°)	Offset Wellbore Centre +N/-S (ft)	+E/-W (ft)	Between Centres (ft)	Between Ellipses (ft)	Minimum Separation (ft)	Separation Factor	Warning
10,600.0	7,223.0	7,411.1	7,183.7	100.5	31.7	-91.12	742.8	4,454.0	933.1	811.8	121.24	7.696	
10,700.0	7,223.0	7,409.6	7,182.2	103.2	31.7	-90.68	742.7	4,454.0	835.4	711.4	124.05	6.734	
10,800.0	7,223.0	7,408.1	7,180.7	106.0	31.7	-90.21	742.6	4,454.0	738.4	611.5	126.86	5.820	
10,900.0	7,223.0	7,406.5	7,179.1	108.8	31.7	-89.74	742.6	4,454.0	642.3	512.6	129.67	4.953	
11,000.0	7,223.0	7,404.9	7,177.5	111.5	31.7	-89.25	742.5	4,454.1	547.5	415.1	132.47	4.133	
11,100.0	7,223.0	7,403.3	7,175.9	114.3	31.7	-88.75	742.4	4,454.1	455.0	319.8	135.26	3.364	
11,200.0	7,223.0	7,401.5	7,174.2	117.1	31.7	-88.23	742.3	4,454.1	366.5	228.5	138.05	2.655	
11,300.0	7,223.0	7,399.8	7,172.4	119.9	31.7	-87.70	742.1	4,454.2	285.6	144.8	140.82	2.028	
11,400.0	7,223.0	7,398.0	7,170.6	122.6	31.7	-87.15	742.0	4,454.2	221.0	77.4	143.58	1.539	
11,500.0	7,223.0	7,396.1	7,168.7	125.4	31.7	-86.58	741.9	4,454.2	190.0	43.7	146.32	1.298 Level 3	
11,513.8	7,223.0	7,395.8	7,168.4	125.8	31.7	-86.50	741.9	4,454.2	189.5	42.8	146.70	1.292 Level 3, CC, ES, SF	
11,600.0	7,223.0	7,394.1	7,166.8	128.2	31.7	-86.00	741.8	4,454.3	208.2	59.1	149.05	1.397 Level 3	
11,700.0	7,223.0	7,392.1	7,164.8	131.0	31.7	-85.39	741.7	4,454.3	265.7	113.9	151.76	1.750	
11,800.0	7,223.0	7,390.1	7,162.7	133.8	31.7	-84.77	741.6	4,454.3	343.2	188.8	154.45	2.222	
11,900.0	7,223.0	7,387.9	7,160.6	136.5	31.7	-84.12	741.4	4,454.4	430.1	273.0	157.12	2.738	
12,000.0	7,223.0	7,385.7	7,158.4	139.3	31.7	-83.46	741.3	4,454.4	521.8	362.0	159.75	3.266	
12,100.0	7,223.0	7,383.5	7,156.1	142.1	31.7	-82.77	741.1	4,454.5	616.0	453.6	162.36	3.794	
12,200.0	7,223.0	7,381.1	7,153.8	144.9	31.7	-82.06	741.0	4,454.5	711.8	546.9	164.93	4.316	
12,300.0	7,223.0	7,378.7	7,151.3	147.7	31.7	-81.33	740.8	4,454.6	808.6	641.1	167.46	4.829	
12,400.0	7,223.0	7,376.1	7,148.8	150.5	31.7	-80.57	740.7	4,454.6	906.1	736.1	169.94	5.332	

<b>Company:</b>	Synergy Resources	<b>Local Co-ordinate Reference:</b>	Well SRC Wiedeman 21-5-3CHZ
<b>Project:</b>	Sec.5-T5N-R66W	<b>TVD Reference:</b>	WELL @ 4796.0ft (RKB - 13')
<b>Reference Site:</b>	SRC Wiedeman Pad Sec.5-T5N-R66W	<b>MD Reference:</b>	WELL @ 4796.0ft (RKB - 13')
<b>Site Error:</b>	0.0ft	<b>North Reference:</b>	True
<b>Reference Well:</b>	SRC Wiedeman 21-5-3CHZ	<b>Survey Calculation Method:</b>	Minimum Curvature
<b>Well Error:</b>	0.0ft	<b>Output errors are at</b>	2.00 sigma
<b>Reference Wellbore</b>	Wellbore #1	<b>Database:</b>	Landmark
<b>Reference Design:</b>	Plan #1 (6-24-14)	<b>Offset TVD Reference:</b>	Offset Datum

Offset Design SRC Wiedeman Pad Sec.5-T5N-R66W - SRC Wiedeman 21-5-3NHZ - Wellbore #1 - Plan #1 (6-24-14)													Offset Site Error:	0.0 ft
Survey Program: 0-MWD													Offset Well Error:	0.0 ft
Reference		Offset		Semi Major Axis			Distance							Warning
Measured Depth (ft)	Vertical Depth (ft)	Measured Depth (ft)	Vertical Depth (ft)	Reference (ft)	Offset (ft)	Highside Toolface (°)	Offset Wellbore Centre +N/-S (ft)	+E/-W (ft)	Between Centres (ft)	Between Ellipses (ft)	Minimum Separation (ft)	Separation Factor		
0.0	0.0	0.0	0.0	0.0	0.0	6.38	14.9	1.7	15.0	15.0	0.00	N/A		
100.0	100.0	100.0	100.0	0.1	0.1	6.38	14.9	1.7	15.0	14.8	0.22	66.869		
200.0	200.0	200.0	200.0	0.3	0.3	6.38	14.9	1.7	15.0	14.4	0.67	22.290		
300.0	300.0	300.0	300.0	0.6	0.6	6.38	14.9	1.7	15.0	13.9	1.12	13.374		
400.0	400.0	400.0	400.0	0.8	0.8	6.38	14.9	1.7	15.0	13.5	1.57	9.553		
500.0	500.0	500.0	500.0	1.0	1.0	6.38	14.9	1.7	15.0	13.0	2.02	7.430 CC		
600.0	600.0	599.5	599.4	1.2	1.2	5.02	16.7	1.5	16.7	14.3	2.47	6.765		
700.0	700.0	698.7	698.5	1.5	1.5	2.23	21.8	0.8	21.8	18.9	2.93	7.464		
800.0	800.0	797.4	796.9	1.7	1.7	-0.33	30.2	-0.2	30.4	27.0	3.38	8.988		
900.0	900.0	895.4	894.2	1.9	2.0	-2.17	42.0	-1.6	42.4	38.6	3.84	11.035		
1,000.0	1,000.0	993.9	991.5	2.1	2.2	-3.37	56.3	-3.3	57.1	52.7	4.31	13.243		
1,100.0	1,100.0	1,093.0	1,089.6	2.4	2.5	8.47	70.9	-5.1	70.2	65.4	4.75	14.777		
1,200.0	1,199.8	1,192.5	1,188.0	2.6	2.9	8.45	85.6	-6.8	79.9	74.7	5.20	15.357		
1,300.0	1,299.5	1,292.3	1,286.7	2.8	3.2	8.77	100.3	-8.6	86.1	80.4	5.65	15.228		
1,310.5	1,309.8	1,302.8	1,297.0	2.8	3.2	8.83	101.9	-8.8	86.6	80.9	5.70	15.181		
1,400.0	1,398.9	1,392.2	1,385.5	3.1	3.5	9.28	115.0	-10.4	90.3	84.2	6.12	14.746		
1,500.0	1,498.3	1,492.1	1,484.3	3.3	3.8	9.75	129.8	-12.2	94.5	87.9	6.60	14.322		
1,600.0	1,597.7	1,592.0	1,583.1	3.6	4.2	10.17	144.5	-13.9	98.6	91.6	7.07	13.949		
1,700.0	1,697.1	1,692.0	1,681.9	3.8	4.5	10.56	159.2	-15.7	102.8	95.3	7.55	13.620		
1,800.0	1,796.5	1,791.9	1,780.7	4.1	4.9	10.92	173.9	-17.5	107.0	99.0	8.03	13.327		
1,900.0	1,895.9	1,891.8	1,879.5	4.4	5.2	11.26	188.7	-19.3	111.2	102.7	8.51	13.065		
2,000.0	1,995.3	1,991.7	1,978.3	4.7	5.5	11.56	203.4	-21.0	115.4	106.4	9.00	12.830		
2,100.0	2,094.8	2,091.6	2,077.1	4.9	5.9	11.85	218.1	-22.8	119.6	110.1	9.48	12.617		
2,200.0	2,194.2	2,191.5	2,175.9	5.2	6.2	12.12	232.8	-24.6	123.8	113.9	9.97	12.424		
2,300.0	2,293.6	2,291.4	2,274.7	5.5	6.6	12.37	247.6	-26.4	128.0	117.6	10.45	12.247		
2,400.0	2,393.0	2,391.3	2,373.5	5.8	6.9	12.60	262.3	-28.1	132.2	121.3	10.94	12.086		
2,500.0	2,492.4	2,491.2	2,472.3	6.1	7.3	12.82	277.0	-29.9	136.4	125.0	11.43	11.937		
2,600.0	2,591.8	2,591.1	2,571.1	6.4	7.6	13.03	291.8	-31.7	140.7	128.7	11.92	11.800		
2,700.0	2,691.2	2,691.1	2,669.9	6.6	8.0	13.23	306.5	-33.5	144.9	132.5	12.41	11.674		
2,800.0	2,790.7	2,791.0	2,768.7	6.9	8.3	13.41	321.2	-35.2	149.1	136.2	12.90	11.556		
2,900.0	2,890.1	2,890.9	2,867.5	7.2	8.7	13.58	335.9	-37.0	153.3	139.9	13.39	11.447		
3,000.0	2,989.5	2,990.8	2,966.3	7.5	9.0	13.75	350.7	-38.8	157.5	143.6	13.88	11.345		
3,100.0	3,088.9	3,090.7	3,065.1	7.8	9.4	13.90	365.4	-40.6	161.7	147.4	14.38	11.250		
3,200.0	3,188.3	3,190.6	3,163.9	8.1	9.7	14.05	380.1	-42.3	166.0	151.1	14.87	11.161		
3,300.0	3,287.7	3,290.5	3,262.7	8.4	10.1	14.19	394.8	-44.1	170.2	154.8	15.36	11.077		
3,400.0	3,387.1	3,390.4	3,361.6	8.7	10.4	14.32	409.6	-45.9	174.4	158.6	15.86	10.998		
3,500.0	3,486.5	3,490.3	3,460.4	9.0	10.8	14.45	424.3	-47.7	178.6	162.3	16.35	10.924		
3,600.0	3,586.0	3,590.2	3,559.2	9.3	11.1	14.57	439.0	-49.4	182.9	166.0	16.85	10.854		
3,700.0	3,685.4	3,690.2	3,658.0	9.6	11.5	14.69	453.7	-51.2	187.1	169.7	17.34	10.788		
3,800.0	3,784.8	3,790.1	3,756.8	9.8	11.8	14.80	468.5	-53.0	191.3	173.5	17.84	10.725		
3,900.0	3,884.2	3,890.0	3,855.6	10.1	12.2	14.91	483.2	-54.8	195.5	177.2	18.33	10.666		
4,000.0	3,983.6	3,989.9	3,954.4	10.4	12.5	15.01	497.9	-56.5	199.8	180.9	18.83	10.610		
4,100.0	4,083.0	4,089.8	4,053.2	10.7	12.9	15.10	512.6	-58.3	204.0	184.7	19.33	10.556		
4,200.0	4,182.4	4,189.7	4,152.0	11.0	13.2	15.20	527.4	-60.1	208.2	188.4	19.82	10.505		
4,300.0	4,281.9	4,289.6	4,250.8	11.3	13.6	15.29	542.1	-61.9	212.5	192.1	20.32	10.456		
4,400.0	4,381.3	4,389.5	4,349.6	11.6	13.9	15.37	556.8	-63.6	216.7	195.9	20.81	10.410		
4,500.0	4,480.7	4,489.4	4,448.4	11.9	14.3	15.46	571.5	-65.4	220.9	199.6	21.31	10.366		
4,600.0	4,580.1	4,589.3	4,547.2	12.2	14.6	15.54	586.3	-67.2	225.1	203.3	21.81	10.323		
4,700.0	4,679.5	4,689.3	4,646.0	12.5	15.0	15.61	601.0	-69.0	229.4	207.1	22.31	10.283		
4,800.0	4,778.9	4,789.2	4,744.8	12.8	15.3	15.69	615.7	-70.7	233.6	210.8	22.80	10.244		
4,900.0	4,878.3	4,889.1	4,843.6	13.1	15.7	15.76	630.4	-72.5	237.8	214.5	23.30	10.207		
5,000.0	4,977.7	4,989.0	4,942.4	13.4	16.0	15.83	645.2	-74.3	242.1	218.3	23.80	10.171		

CC - Min centre to center distance or convergent point, SF - min separation factor, ES - min ellipse separation

<b>Company:</b>	Synergy Resources	<b>Local Co-ordinate Reference:</b>	Well SRC Wiedeman 21-5-3CHZ
<b>Project:</b>	Sec.5-T5N-R66W	<b>TVD Reference:</b>	WELL @ 4796.0ft (RKB - 13')
<b>Reference Site:</b>	SRC Wiedeman Pad Sec.5-T5N-R66W	<b>MD Reference:</b>	WELL @ 4796.0ft (RKB - 13')
<b>Site Error:</b>	0.0ft	<b>North Reference:</b>	True
<b>Reference Well:</b>	SRC Wiedeman 21-5-3CHZ	<b>Survey Calculation Method:</b>	Minimum Curvature
<b>Well Error:</b>	0.0ft	<b>Output errors are at</b>	2.00 sigma
<b>Reference Wellbore</b>	Wellbore #1	<b>Database:</b>	Landmark
<b>Reference Design:</b>	Plan #1 (6-24-14)	<b>Offset TVD Reference:</b>	Offset Datum

Offset Design												Offset Site Error:	0.0 ft
Survey Program: 0-MWD												Offset Well Error:	0.0 ft
Reference		Offset		Semi Major Axis			Distance						
Measured Depth (ft)	Vertical Depth (ft)	Measured Depth (ft)	Vertical Depth (ft)	Reference (ft)	Offset (ft)	Highside Toolface (°)	Offset Wellbore Centre +N/-S (ft)	+E/-W (ft)	Between Centres (ft)	Between Ellipses (ft)	Minimum Separation (ft)	Separation Factor	Warning
5,100.0	5,077.2	5,088.9	5,041.2	13.7	16.4	15.89	659.9	-76.1	246.3	222.0	24.30	10.137	
5,200.0	5,176.6	5,188.8	5,140.0	14.0	16.7	15.96	674.6	-77.8	250.5	225.7	24.80	10.104	
5,300.0	5,276.0	5,288.7	5,238.8	14.3	17.1	16.02	689.3	-79.6	254.8	229.5	25.29	10.072	
5,400.0	5,375.4	5,388.6	5,337.6	14.6	17.4	16.08	704.1	-81.4	259.0	233.2	25.79	10.042	
5,500.0	5,474.8	5,488.5	5,436.4	14.9	17.8	16.14	718.8	-83.2	263.2	236.9	26.29	10.013	
5,600.0	5,574.2	5,588.4	5,535.2	15.2	18.1	16.20	733.5	-84.9	267.5	240.7	26.79	9.984	
5,700.0	5,673.6	5,694.5	5,640.2	15.5	18.5	16.28	748.4	-86.7	271.0	243.7	27.28	9.933	
5,800.0	5,773.1	5,804.8	5,749.8	15.8	18.7	16.53	760.1	-88.1	271.1	243.4	27.75	9.770	
5,900.0	5,872.5	5,914.8	5,859.6	16.1	19.0	16.95	767.5	-89.0	267.4	239.2	28.21	9.479	
5,917.8	5,890.2	5,934.4	5,879.1	16.1	19.0	17.04	768.4	-89.1	266.4	238.1	28.29	9.414	
6,000.0	5,972.0	6,024.5	5,969.3	16.3	19.1	17.45	770.8	-89.4	261.1	232.5	28.63	9.120	
6,100.0	6,071.8	6,127.1	6,071.8	16.5	19.3	17.84	770.9	-89.4	255.3	226.4	28.98	8.811	
6,200.0	6,171.8	6,227.0	6,171.8	16.7	19.4	18.01	770.9	-89.4	252.7	223.4	29.30	8.626	
6,228.2	6,200.0	6,255.3	6,200.0	16.7	19.5	5.63	770.9	-89.4	252.6	216.9	35.68	7.079	
6,300.0	6,271.8	6,327.0	6,271.8	16.8	19.6	5.63	770.9	-89.4	252.6	216.7	35.91	7.034	
6,349.1	6,320.9	6,376.2	6,320.9	16.9	19.6	5.63	770.9	-89.4	252.6	216.5	36.08	7.002	
6,400.0	6,371.8	6,425.7	6,370.5	17.0	19.7	5.80	770.9	-88.6	252.7	216.5	36.23	6.974	
6,500.0	6,471.8	6,520.8	6,464.8	17.2	19.8	8.21	771.0	-77.9	254.2	217.8	36.41	6.980	
6,535.0	6,506.8	6,553.2	6,496.6	17.3	19.9	9.66	771.1	-71.4	255.4	218.9	36.44	7.008	
6,550.0	6,521.8	6,566.9	6,509.9	17.3	19.9	-79.20	771.1	-68.2	256.0	225.0	30.95	8.270	
6,600.0	6,571.7	6,612.2	6,553.5	17.4	19.9	-76.86	771.2	-55.9	258.3	227.0	31.31	8.249	
6,650.0	6,621.3	6,657.0	6,595.7	17.4	20.0	-74.63	771.3	-41.0	260.9	229.3	31.64	8.248	
6,700.0	6,670.3	6,700.0	6,635.3	17.5	20.0	-72.56	771.4	-24.2	263.9	232.0	31.91	8.270	
6,750.0	6,718.5	6,745.1	6,675.7	17.6	20.1	-70.51	771.5	-4.2	267.0	234.9	32.14	8.309	
6,800.0	6,765.8	6,788.4	6,713.2	17.6	20.1	-68.63	771.7	17.5	270.4	238.1	32.30	8.371	
6,850.0	6,811.7	6,831.3	6,749.1	17.7	20.2	-66.89	771.9	41.1	273.8	241.3	32.44	8.440	
6,900.0	6,856.2	6,873.9	6,783.1	17.7	20.3	-65.28	772.0	66.6	277.2	244.7	32.47	8.538	
6,950.0	6,898.9	6,916.2	6,815.4	17.8	20.3	-63.80	772.2	93.9	280.6	248.1	32.47	8.641	
7,000.0	6,939.8	6,958.1	6,845.7	17.9	20.4	-62.44	772.5	122.8	284.0	251.5	32.46	8.748	
7,050.0	6,978.5	7,000.0	6,874.3	17.9	20.5	-61.22	772.7	153.5	287.2	254.7	32.44	8.851	
7,100.0	7,015.0	7,041.1	6,900.6	18.0	20.6	-60.13	772.9	185.1	290.2	257.7	32.46	8.939	
7,150.0	7,048.9	7,082.3	6,925.0	18.1	20.7	-59.15	773.1	218.2	293.0	260.5	32.54	9.005	
7,200.0	7,080.3	7,123.3	6,947.4	18.3	20.9	-58.30	773.4	252.5	295.6	262.9	32.70	9.040	
7,250.0	7,108.8	7,164.1	6,967.8	18.5	21.1	-57.57	773.6	287.9	297.9	264.9	32.97	9.034	
7,300.0	7,134.4	7,204.8	6,986.0	18.8	21.3	-56.96	773.9	324.3	299.8	266.4	33.39	8.980	
7,350.0	7,156.9	7,250.0	7,003.8	19.3	21.6	-56.42	774.2	365.8	301.5	267.5	34.02	8.865	
7,400.0	7,176.3	7,285.8	7,016.0	19.8	22.0	-56.08	774.4	399.5	302.8	268.0	34.76	8.710	
7,450.0	7,192.4	7,326.2	7,027.7	20.5	22.4	-55.80	774.7	438.1	303.7	268.0	35.74	8.499	
7,500.0	7,205.2	7,366.5	7,037.2	21.2	22.9	-55.64	775.0	477.3	304.3	267.4	36.91	8.244	
7,550.0	7,214.6	7,406.8	7,044.5	22.0	23.4	-55.59	775.3	516.9	304.5	266.2	38.28	7.954	
7,600.0	7,220.5	7,450.0	7,049.9	22.9	24.1	-55.65	775.6	559.8	304.3	264.4	39.87	7.631	
7,650.0	7,222.9	7,487.5	7,052.4	23.9	24.7	-55.81	775.9	597.2	303.7	262.1	41.56	7.307	
7,660.0	7,223.0	7,500.0	7,052.8	24.0	24.9	-55.88	776.0	609.7	303.6	261.6	42.00	7.228	
7,683.1	7,223.0	7,514.2	7,053.0	24.5	25.2	-55.91	776.1	623.9	303.3	260.7	42.62	7.116	
7,700.0	7,223.0	7,530.4	7,053.0	24.8	25.4	-55.91	776.2	640.1	303.3	260.1	43.17	7.025	
7,800.0	7,223.0	7,630.4	7,053.0	26.9	27.3	-55.91	776.9	740.1	303.3	256.6	46.64	6.503	
7,900.0	7,223.0	7,730.4	7,053.0	29.1	29.4	-55.91	777.6	840.1	303.3	253.0	50.30	6.029	
8,000.0	7,223.0	7,830.4	7,053.0	31.3	31.6	-55.91	778.3	940.1	303.3	249.1	54.13	5.602	
8,100.0	7,223.0	7,930.4	7,053.0	33.7	33.9	-55.90	779.1	1,040.1	303.3	245.2	58.09	5.220	
8,200.0	7,223.0	8,030.4	7,053.0	36.1	36.2	-55.90	779.8	1,140.1	303.3	241.1	62.16	4.878	
8,300.0	7,223.0	8,130.4	7,053.0	38.6	38.7	-55.90	780.5	1,240.1	303.3	236.9	66.32	4.573	
8,400.0	7,223.0	8,230.4	7,053.0	41.1	41.2	-55.90	781.2	1,340.1	303.2	232.7	70.55	4.298	

CC - Min centre to center distance or convergent point, SF - min separation factor, ES - min ellipse separation



<b>Company:</b>	Synergy Resources	<b>Local Co-ordinate Reference:</b>	Well SRC Wiedeman 21-5-3CHZ
<b>Project:</b>	Sec.5-T5N-R66W	<b>TVD Reference:</b>	WELL @ 4796.0ft (RKB - 13')
<b>Reference Site:</b>	SRC Wiedeman Pad Sec.5-T5N-R66W	<b>MD Reference:</b>	WELL @ 4796.0ft (RKB - 13')
<b>Site Error:</b>	0.0ft	<b>North Reference:</b>	True
<b>Reference Well:</b>	SRC Wiedeman 21-5-3CHZ	<b>Survey Calculation Method:</b>	Minimum Curvature
<b>Well Error:</b>	0.0ft	<b>Output errors are at</b>	2.00 sigma
<b>Reference Wellbore</b>	Wellbore #1	<b>Database:</b>	Landmark
<b>Reference Design:</b>	Plan #1 (6-24-14)	<b>Offset TVD Reference:</b>	Offset Datum

Offset Design SRC Wiedeman Pad Sec.5-T5N-R66W - SRC Wiedeman 21-5-3NHZ - Wellbore #1 - Plan #1 (6-24-14)													Offset Site Error:	0.0 ft
Survey Program: 0-MWD													Offset Well Error:	0.0 ft
Reference		Offset		Semi Major Axis			Distance							Warning
Measured Depth (ft)	Vertical Depth (ft)	Measured Depth (ft)	Vertical Depth (ft)	Reference (ft)	Offset (ft)	Highside Toolface (°)	Offset Wellbore Centre +N/-S (ft)	+E/-W (ft)	Between Centres (ft)	Between Ellipses (ft)	Minimum Separation (ft)	Separation Factor		
8,500.0	7,223.0	8,330.4	7,053.0	43.7	43.7	-55.90	781.9	1,440.1	303.2	228.4	74.84	4.052		
8,600.0	7,223.0	8,430.4	7,053.0	46.3	46.2	-55.90	782.7	1,540.1	303.2	224.1	79.17	3.830		
8,700.0	7,223.0	8,530.4	7,053.0	48.9	48.8	-55.90	783.4	1,640.1	303.2	219.7	83.55	3.629		
8,800.0	7,223.0	8,630.4	7,053.0	51.5	51.4	-55.90	784.1	1,740.1	303.2	215.3	87.97	3.447		
8,900.0	7,223.0	8,730.4	7,053.0	54.1	54.0	-55.90	784.8	1,840.1	303.2	210.8	92.42	3.281		
9,000.0	7,223.0	8,830.4	7,053.0	56.8	56.7	-55.90	785.5	1,940.1	303.2	206.3	96.89	3.129		
9,100.0	7,223.0	8,930.4	7,053.0	59.5	59.3	-55.90	786.3	2,040.1	303.2	201.8	101.39	2.991		
9,200.0	7,223.0	9,030.4	7,053.0	62.2	62.0	-55.90	787.0	2,140.1	303.2	197.3	105.90	2.863		
9,300.0	7,223.0	9,130.4	7,053.0	64.9	64.7	-55.90	787.7	2,240.1	303.2	192.8	110.43	2.745		
9,400.0	7,223.0	9,230.4	7,053.0	67.6	67.4	-55.90	788.4	2,340.1	303.2	188.2	114.98	2.637		
9,500.0	7,223.0	9,330.4	7,053.0	70.3	70.1	-55.89	789.2	2,440.1	303.2	183.6	119.55	2.536		
9,600.0	7,223.0	9,430.4	7,053.0	73.0	72.8	-55.89	789.9	2,540.1	303.2	179.1	124.12	2.443		
9,700.0	7,223.0	9,530.4	7,053.0	75.7	75.5	-55.89	790.6	2,640.1	303.2	174.5	128.71	2.356		
9,800.0	7,223.0	9,630.4	7,053.0	78.5	78.2	-55.89	791.3	2,740.1	303.2	169.9	133.30	2.274		
9,900.0	7,223.0	9,730.4	7,053.0	81.2	81.0	-55.89	792.0	2,840.1	303.2	165.3	137.91	2.198		
10,000.0	7,223.0	9,830.4	7,053.0	83.9	83.7	-55.89	792.8	2,940.1	303.2	160.6	142.52	2.127		
10,100.0	7,223.0	9,930.4	7,053.0	86.7	86.4	-55.89	793.5	3,040.1	303.1	156.0	147.14	2.060		
10,200.0	7,223.0	10,030.4	7,053.0	89.4	89.2	-55.89	794.2	3,140.1	303.1	151.4	151.76	1.997		
10,300.0	7,223.0	10,130.4	7,053.0	92.2	91.9	-55.89	794.9	3,240.1	303.1	146.7	156.39	1.938		
10,400.0	7,223.0	10,230.4	7,053.0	95.0	94.7	-55.89	795.6	3,340.1	303.1	142.1	161.03	1.882		
10,500.0	7,223.0	10,330.4	7,053.0	97.7	97.4	-55.89	796.4	3,440.1	303.1	137.5	165.67	1.830		
10,600.0	7,223.0	10,430.4	7,053.0	100.5	100.2	-55.89	797.1	3,540.0	303.1	132.8	170.32	1.780		
10,700.0	7,223.0	10,530.4	7,053.0	103.2	102.9	-55.89	797.8	3,640.0	303.1	128.1	174.97	1.732		
10,800.0	7,223.0	10,630.4	7,053.0	106.0	105.7	-55.88	798.5	3,740.0	303.1	123.5	179.62	1.687		
10,900.0	7,223.0	10,730.4	7,053.0	108.8	108.5	-55.88	799.2	3,840.0	303.1	118.8	184.28	1.645		
11,000.0	7,223.0	10,830.4	7,053.0	111.5	111.2	-55.88	800.0	3,940.0	303.1	114.2	188.94	1.604		
11,100.0	7,223.0	10,930.4	7,053.0	114.3	114.0	-55.88	800.7	4,040.0	303.1	109.5	193.61	1.565		
11,200.0	7,223.0	11,030.4	7,053.0	117.1	116.8	-55.88	801.4	4,140.0	303.1	104.8	198.27	1.529		
11,300.0	7,223.0	11,130.4	7,053.0	119.9	119.5	-55.88	802.1	4,240.0	303.1	100.1	202.94	1.493 Level 3		
11,400.0	7,223.0	11,230.4	7,053.0	122.6	122.3	-55.88	802.8	4,340.0	303.1	95.5	207.62	1.460 Level 3		
11,500.0	7,223.0	11,330.4	7,053.0	125.4	125.1	-55.88	803.6	4,440.0	303.1	90.8	212.29	1.428 Level 3		
11,600.0	7,223.0	11,430.4	7,053.0	128.2	127.9	-55.88	804.3	4,540.0	303.1	86.1	216.97	1.397 Level 3		
11,700.0	7,223.0	11,530.4	7,053.0	131.0	130.6	-55.88	805.0	4,640.0	303.1	81.4	221.64	1.367 Level 3		
11,800.0	7,223.0	11,630.4	7,053.0	133.8	133.4	-55.88	805.7	4,740.0	303.0	76.7	226.32	1.339 Level 3		
11,900.0	7,223.0	11,730.4	7,053.0	136.5	136.2	-55.88	806.4	4,840.0	303.0	72.0	231.01	1.312 Level 3		
12,000.0	7,223.0	11,830.4	7,053.0	139.3	139.0	-55.88	807.2	4,940.0	303.0	67.3	235.69	1.286 Level 3		
12,100.0	7,223.0	11,930.4	7,053.0	142.1	141.8	-55.88	807.9	5,040.0	303.0	62.7	240.37	1.261 Level 3		
12,200.0	7,223.0	12,030.4	7,053.0	144.9	144.6	-55.87	808.6	5,140.0	303.0	58.0	245.06	1.237 Level 2		
12,300.0	7,223.0	12,130.4	7,053.0	147.7	147.3	-55.87	809.3	5,240.0	303.0	53.3	249.75	1.213 Level 2		
12,400.0	7,223.0	12,230.4	7,053.0	150.5	150.1	-55.87	810.0	5,340.0	303.0	48.6	254.44	1.191 Level 2		
12,500.0	7,223.0	12,330.4	7,053.0	153.3	152.9	-55.87	810.8	5,440.0	303.0	43.9	259.13	1.169 Level 2		
12,600.0	7,223.0	12,430.4	7,053.0	156.1	155.7	-55.87	811.5	5,540.0	303.0	39.2	263.82	1.149 Level 2		
12,700.0	7,223.0	12,530.4	7,053.0	158.8	158.5	-55.87	812.2	5,640.0	303.0	34.5	268.51	1.128 Level 2		
12,800.0	7,223.0	12,630.4	7,053.0	161.6	161.3	-55.87	812.9	5,740.0	303.0	29.8	273.21	1.109 Level 2		
12,900.0	7,223.0	12,730.4	7,053.0	164.4	164.1	-55.87	813.6	5,840.0	303.0	25.1	277.90	1.090 Level 2		
13,000.0	7,223.0	12,830.4	7,053.0	167.2	166.8	-55.87	814.4	5,940.0	303.0	20.4	282.59	1.072 Level 2		
13,100.0	7,223.0	12,930.4	7,053.0	170.0	169.6	-55.87	815.1	6,040.0	303.0	15.7	287.29	1.055 Level 2		
13,200.0	7,223.0	13,030.4	7,053.0	172.8	172.4	-55.87	815.8	6,140.0	303.0	11.0	291.99	1.038 Level 2		
13,300.0	7,223.0	13,130.4	7,053.0	175.6	175.2	-55.87	816.5	6,240.0	303.0	6.3	296.69	1.021 Level 2		
13,400.0	7,223.0	13,230.4	7,053.0	178.4	178.0	-55.87	817.3	6,340.0	303.0	1.6	301.38	1.005 Level 2		
13,500.0	7,223.0	13,330.4	7,053.0	181.2	180.8	-55.86	818.0	6,440.0	303.0	-3.1	306.08	0.990 Level 1		
13,600.0	7,223.0	13,430.4	7,053.0	184.0	183.6	-55.86	818.7	6,540.0	302.9	-7.8	310.78	0.975 Level 1		

CC - Min centre to center distance or convergent point, SF - min separation factor, ES - min ellipse separation



<b>Company:</b>	Synergy Resources	<b>Local Co-ordinate Reference:</b>	Well SRC Wiedeman 21-5-3CHZ
<b>Project:</b>	Sec.5-T5N-R66W	<b>TVD Reference:</b>	WELL @ 4796.0ft (RKB - 13')
<b>Reference Site:</b>	SRC Wiedeman Pad Sec.5-T5N-R66W	<b>MD Reference:</b>	WELL @ 4796.0ft (RKB - 13')
<b>Site Error:</b>	0.0ft	<b>North Reference:</b>	True
<b>Reference Well:</b>	SRC Wiedeman 21-5-3CHZ	<b>Survey Calculation Method:</b>	Minimum Curvature
<b>Well Error:</b>	0.0ft	<b>Output errors are at</b>	2.00 sigma
<b>Reference Wellbore</b>	Wellbore #1	<b>Database:</b>	Landmark
<b>Reference Design:</b>	Plan #1 (6-24-14)	<b>Offset TVD Reference:</b>	Offset Datum

Offset Design SRC Wiedeman Pad Sec.5-T5N-R66W - SRC Wiedeman 21-5-3NHZ - Wellbore #1 - Plan #1 (6-24-14)													Offset Site Error:	0.0 ft
Survey Program: 0-MWD													Offset Well Error:	0.0 ft
Reference		Offset		Semi Major Axis			Distance							Warning
Measured Depth (ft)	Vertical Depth (ft)	Measured Depth (ft)	Vertical Depth (ft)	Reference (ft)	Offset (ft)	Highside Toolface (°)	Offset Wellbore Centre +N/-S (ft)	+E/-W (ft)	Between Centres (ft)	Between Ellipses (ft)	Minimum Separation (ft)	Separation Factor		
13,700.0	7,223.0	13,530.4	7,053.0	186.8	186.4	-55.86	819.4	6,640.0	302.9	-12.5	315.48	0.960	Level 1	
13,800.0	7,223.0	13,630.4	7,053.0	189.6	189.2	-55.86	820.1	6,740.0	302.9	-17.2	320.18	0.946	Level 1	
13,900.0	7,223.0	13,730.4	7,053.0	192.4	192.0	-55.86	820.9	6,840.0	302.9	-22.0	324.89	0.932	Level 1	
14,000.0	7,223.0	13,830.4	7,053.0	195.1	194.8	-55.86	821.6	6,940.0	302.9	-26.7	329.59	0.919	Level 1	
14,100.0	7,223.0	13,930.4	7,053.0	197.9	197.6	-55.86	822.3	7,040.0	302.9	-31.4	334.29	0.906	Level 1	
14,200.0	7,223.0	14,030.4	7,053.0	200.7	200.4	-55.86	823.0	7,140.0	302.9	-36.1	338.99	0.894	Level 1	
14,300.0	7,223.0	14,130.4	7,053.0	203.5	203.2	-55.86	823.7	7,240.0	302.9	-40.8	343.70	0.881	Level 1	
14,400.0	7,223.0	14,230.4	7,053.0	206.3	205.9	-55.86	824.5	7,339.9	302.9	-45.5	348.40	0.869	Level 1	
14,500.0	7,223.0	14,330.4	7,053.0	209.1	208.7	-55.86	825.2	7,439.9	302.9	-50.2	353.10	0.858	Level 1	
14,600.0	7,223.0	14,430.4	7,053.0	211.9	211.5	-55.86	825.9	7,539.9	302.9	-54.9	357.81	0.847	Level 1	
14,700.0	7,223.0	14,530.4	7,053.0	214.7	214.3	-55.86	826.6	7,639.9	302.9	-59.6	362.51	0.836	Level 1	
14,800.0	7,223.0	14,630.4	7,053.0	217.5	217.1	-55.86	827.3	7,739.9	302.9	-64.3	367.22	0.825	Level 1	
14,900.0	7,223.0	14,730.4	7,053.0	220.3	219.9	-55.85	828.1	7,839.9	302.9	-69.1	371.93	0.814	Level 1	
15,000.0	7,223.0	14,830.4	7,053.0	223.1	222.7	-55.85	828.8	7,939.9	302.9	-73.8	376.63	0.804	Level 1	
15,100.0	7,223.0	14,930.4	7,053.0	225.9	225.5	-55.85	829.5	8,039.9	302.9	-78.5	381.34	0.794	Level 1	
15,200.0	7,223.0	15,030.4	7,053.0	228.7	228.3	-55.85	830.2	8,139.9	302.9	-83.2	386.04	0.785	Level 1	
15,300.0	7,223.0	15,130.4	7,053.0	231.5	231.1	-55.85	830.9	8,239.9	302.8	-87.9	390.75	0.775	Level 1	
15,400.0	7,223.0	15,230.4	7,053.0	234.3	233.9	-55.85	831.7	8,339.9	302.8	-92.6	395.46	0.766	Level 1	
15,500.0	7,223.0	15,330.4	7,053.0	237.1	236.7	-55.85	832.4	8,439.9	302.8	-97.3	400.17	0.757	Level 1	
15,600.0	7,223.0	15,430.4	7,053.0	239.9	239.5	-55.85	833.1	8,539.9	302.8	-102.0	404.87	0.748	Level 1	
15,700.0	7,223.0	15,530.4	7,053.0	242.7	242.3	-55.85	833.8	8,639.9	302.8	-106.8	409.58	0.739	Level 1	
15,800.0	7,223.0	15,630.4	7,053.0	245.5	245.1	-55.85	834.5	8,739.9	302.8	-111.5	414.29	0.731	Level 1	
15,900.0	7,223.0	15,730.4	7,053.0	248.3	247.9	-55.85	835.3	8,839.9	302.8	-116.2	419.00	0.723	Level 1	
16,000.0	7,223.0	15,830.4	7,053.0	251.1	250.7	-55.85	836.0	8,939.9	302.8	-120.9	423.71	0.715	Level 1	
16,100.0	7,223.0	15,930.4	7,053.0	253.9	253.5	-55.85	836.7	9,039.9	302.8	-125.6	428.42	0.707	Level 1	
16,200.0	7,223.0	16,030.4	7,053.0	256.7	256.3	-55.84	837.4	9,139.9	302.8	-130.3	433.13	0.699	Level 1	
16,300.0	7,223.0	16,130.4	7,053.0	259.5	259.1	-55.84	838.1	9,239.9	302.8	-135.0	437.84	0.692	Level 1	
16,400.0	7,223.0	16,230.4	7,053.0	262.3	261.9	-55.84	838.9	9,339.9	302.8	-139.8	442.54	0.684	Level 1	
16,500.0	7,223.0	16,330.4	7,053.0	265.1	264.7	-55.84	839.6	9,439.9	302.8	-144.5	447.25	0.677	Level 1	
16,600.0	7,223.0	16,430.4	7,053.0	267.9	267.5	-55.84	840.3	9,539.9	302.8	-149.2	451.96	0.670	Level 1	
16,700.0	7,223.0	16,530.4	7,053.0	270.7	270.3	-55.84	841.0	9,639.9	302.8	-153.9	456.67	0.663	Level 1	
16,800.0	7,223.0	16,630.4	7,053.0	273.5	273.1	-55.84	841.8	9,739.9	302.8	-158.6	461.38	0.656	Level 1	
16,900.0	7,223.0	16,730.4	7,053.0	276.3	275.9	-55.84	842.5	9,839.9	302.8	-163.3	466.09	0.650	Level 1	
17,000.0	7,223.0	16,830.4	7,053.0	279.1	278.7	-55.84	843.2	9,939.9	302.7	-168.1	470.80	0.643	Level 1	
17,035.4	7,223.0	16,865.8	7,053.0	279.8	279.7	-55.84	843.4	9,975.3	302.7	-169.4	472.17	0.641	Level 1, ES, SF	

<b>Company:</b>	Synergy Resources	<b>Local Co-ordinate Reference:</b>	Well SRC Wiedeman 21-5-3CHZ
<b>Project:</b>	Sec.5-T5N-R66W	<b>TVD Reference:</b>	WELL @ 4796.0ft (RKB - 13')
<b>Reference Site:</b>	SRC Wiedeman Pad Sec.5-T5N-R66W	<b>MD Reference:</b>	WELL @ 4796.0ft (RKB - 13')
<b>Site Error:</b>	0.0ft	<b>North Reference:</b>	True
<b>Reference Well:</b>	SRC Wiedeman 21-5-3CHZ	<b>Survey Calculation Method:</b>	Minimum Curvature
<b>Well Error:</b>	0.0ft	<b>Output errors are at</b>	2.00 sigma
<b>Reference Wellbore</b>	Wellbore #1	<b>Database:</b>	Landmark
<b>Reference Design:</b>	Plan #1 (6-24-14)	<b>Offset TVD Reference:</b>	Offset Datum

Offset Design SRC Wiedeman Pad Sec.5-T5N-R66W - SRC Wiedeman A-5-3CHZ - Wellbore #1 - Plan #1 (6-24-14)													Offset Site Error:	0.0 ft
Survey Program: 0-MWD													Offset Well Error:	0.0 ft
Reference		Offset		Semi Major Axis			Distance							Warning
Measured Depth (ft)	Vertical Depth (ft)	Measured Depth (ft)	Vertical Depth (ft)	Reference (ft)	Offset (ft)	Highside Toolface (°)	Offset Wellbore Centre +N/-S (ft)	+E/-W (ft)	Between Centres (ft)	Between Ellipses (ft)	Minimum Separation (ft)	Separation Factor		
0.0	0.0	0.0	0.0	0.0	0.0	-174.68	-29.9	-2.8	30.0					
100.0	100.0	100.0	100.0	0.1	0.1	-174.68	-29.9	-2.8	30.0	29.8	0.22	133.486		
200.0	200.0	200.0	200.0	0.3	0.3	-174.68	-29.9	-2.8	30.0	29.3	0.67	44.495		
300.0	300.0	300.0	300.0	0.6	0.6	-174.68	-29.9	-2.8	30.0	28.9	1.12	26.697		
400.0	400.0	400.0	400.0	0.8	0.8	-174.68	-29.9	-2.8	30.0	28.4	1.57	19.069		
500.0	500.0	500.0	500.0	1.0	1.0	-174.68	-29.9	-2.8	30.0	28.0	2.02	14.832		
600.0	600.0	600.0	600.0	1.2	1.2	-174.68	-29.9	-2.8	30.0	27.5	2.47	12.135		
700.0	700.0	700.0	700.0	1.5	1.5	-174.68	-29.9	-2.8	30.0	27.1	2.92	10.268		
800.0	800.0	800.0	800.0	1.7	1.7	-174.68	-29.9	-2.8	30.0	26.6	3.37	8.899		
900.0	900.0	900.0	900.0	1.9	1.9	-174.68	-29.9	-2.8	30.0	26.2	3.82	7.852		
1,000.0	1,000.0	1,000.0	1,000.0	2.1	2.1	-174.68	-29.9	-2.8	30.0	25.7	4.27	7.026 CC		
1,100.0	1,100.0	1,100.0	1,100.0	2.4	2.4	-163.23	-29.9	-2.8	31.7	27.0	4.72	6.711		
1,200.0	1,199.8	1,199.8	1,199.8	2.6	2.6	-165.56	-29.9	-2.8	36.7	31.5	5.16	7.108		
1,300.0	1,299.5	1,299.5	1,299.5	2.8	2.8	-168.28	-29.9	-2.8	45.2	39.6	5.61	8.064		
1,310.5	1,309.8	1,309.8	1,309.8	2.8	2.8	-168.56	-29.9	-2.8	46.3	40.6	5.65	8.191		
1,400.0	1,398.9	1,398.9	1,398.9	3.1	3.0	-170.53	-29.9	-2.8	55.8	49.8	6.05	9.221		
1,500.0	1,498.3	1,498.3	1,498.3	3.3	3.3	-172.06	-29.9	-2.8	66.5	60.0	6.50	10.227		
1,600.0	1,597.7	1,597.7	1,597.7	3.6	3.5	-173.17	-29.9	-2.8	77.2	70.3	6.96	11.106		
1,700.0	1,697.1	1,697.1	1,697.1	3.8	3.7	-174.01	-29.9	-2.8	88.0	80.6	7.41	11.878		
1,800.0	1,796.5	1,796.5	1,796.5	4.1	3.9	-174.66	-29.9	-2.8	98.8	90.9	7.86	12.562		
1,900.0	1,895.9	1,895.9	1,895.9	4.4	4.1	-175.19	-29.9	-2.8	109.5	101.2	8.32	13.172		
2,000.0	1,995.3	1,995.3	1,995.3	4.7	4.4	-175.62	-29.9	-2.8	120.3	111.5	8.77	13.719		
2,100.0	2,094.8	2,097.8	2,097.8	4.9	4.6	-175.46	-28.9	-4.2	130.0	120.8	9.23	14.089		
2,200.0	2,194.2	2,200.7	2,200.6	5.2	4.8	-174.18	-25.8	-8.5	137.3	127.6	9.68	14.177		
2,300.0	2,293.6	2,303.7	2,303.2	5.5	5.1	-171.91	-20.6	-16.0	142.3	132.2	10.15	14.020		
2,400.0	2,393.0	2,404.0	2,402.8	5.8	5.3	-169.11	-14.2	-25.1	146.1	135.5	10.63	13.751		
2,500.0	2,492.4	2,503.7	2,501.8	6.1	5.5	-166.45	-7.8	-34.3	150.2	139.1	11.11	13.519		
2,600.0	2,591.8	2,603.3	2,600.9	6.4	5.8	-163.95	-1.4	-43.4	154.6	143.0	11.61	13.322		
2,700.0	2,691.2	2,703.0	2,699.9	6.6	6.0	-161.58	5.0	-52.6	159.3	147.2	12.11	13.153		
2,800.0	2,790.7	2,802.7	2,799.0	6.9	6.3	-159.35	11.4	-61.7	164.3	151.6	12.63	13.009		
2,900.0	2,890.1	2,902.4	2,898.0	7.2	6.5	-157.26	17.8	-70.9	169.4	156.3	13.15	12.886		
3,000.0	2,989.5	3,002.1	2,997.1	7.5	6.8	-155.29	24.2	-80.0	174.8	161.1	13.68	12.780		
3,100.0	3,088.9	3,101.7	3,096.1	7.8	7.1	-153.44	30.6	-89.2	180.4	166.2	14.22	12.690		
3,200.0	3,188.3	3,201.4	3,195.2	8.1	7.3	-151.70	37.1	-98.3	186.2	171.4	14.76	12.614		
3,300.0	3,287.7	3,301.1	3,294.2	8.4	7.6	-150.07	43.5	-107.5	192.1	176.8	15.31	12.549		
3,400.0	3,387.1	3,400.8	3,393.3	8.7	7.9	-148.54	49.9	-116.7	198.2	182.3	15.86	12.493		
3,500.0	3,486.5	3,500.5	3,492.3	9.0	8.2	-147.10	56.3	-125.8	204.4	187.9	16.42	12.446		
3,600.0	3,586.0	3,600.1	3,591.4	9.3	8.4	-145.74	62.7	-135.0	210.7	193.7	16.98	12.407		
3,700.0	3,685.4	3,699.6	3,690.3	9.6	8.7	-144.48	69.1	-144.1	217.1	199.6	17.54	12.378		
3,800.0	3,784.8	3,797.8	3,788.1	9.8	8.9	-143.81	74.2	-151.4	224.1	206.0	18.02	12.434		
3,900.0	3,884.2	3,896.0	3,886.0	10.1	9.1	-144.01	77.4	-156.0	231.7	213.2	18.47	12.548		
4,000.0	3,983.6	3,993.9	3,983.9	10.4	9.3	-144.98	78.7	-157.8	240.0	221.2	18.87	12.720		
4,100.0	4,083.0	4,093.0	4,083.0	10.7	9.5	-146.39	78.7	-157.8	249.0	229.7	19.27	12.918		
4,200.0	4,182.4	4,192.4	4,182.4	11.0	9.7	-147.72	78.7	-157.8	258.1	238.4	19.70	13.101		
4,300.0	4,281.9	4,291.8	4,281.9	11.3	9.9	-148.96	78.7	-157.8	267.3	247.2	20.13	13.281		
4,400.0	4,381.3	4,391.2	4,381.3	11.6	10.1	-150.11	78.7	-157.8	276.6	256.1	20.56	13.458		
4,500.0	4,480.7	4,490.6	4,480.7	11.9	10.3	-151.19	78.7	-157.8	286.1	265.1	20.99	13.633		
4,600.0	4,580.1	4,590.1	4,580.1	12.2	10.5	-152.20	78.7	-157.8	295.6	274.2	21.42	13.804		
4,700.0	4,679.5	4,689.5	4,679.5	12.5	10.7	-153.14	78.7	-157.8	305.2	283.4	21.85	13.971		
4,800.0	4,778.9	4,788.9	4,778.9	12.8	10.9	-154.03	78.7	-157.8	314.9	292.7	22.28	14.135		
4,900.0	4,878.3	4,888.3	4,878.3	13.1	11.1	-154.87	78.7	-157.8	324.7	302.0	22.71	14.295		
5,000.0	4,977.7	4,987.7	4,977.7	13.4	11.4	-155.65	78.7	-157.8	334.5	311.4	23.15	14.451		

CC - Min centre to center distance or convergent point, SF - min separation factor, ES - min ellipse separation

<b>Company:</b>	Synergy Resources	<b>Local Co-ordinate Reference:</b>	Well SRC Wiedeman 21-5-3CHZ
<b>Project:</b>	Sec.5-T5N-R66W	<b>TVD Reference:</b>	WELL @ 4796.0ft (RKB - 13')
<b>Reference Site:</b>	SRC Wiedeman Pad Sec.5-T5N-R66W	<b>MD Reference:</b>	WELL @ 4796.0ft (RKB - 13')
<b>Site Error:</b>	0.0ft	<b>North Reference:</b>	True
<b>Reference Well:</b>	SRC Wiedeman 21-5-3CHZ	<b>Survey Calculation Method:</b>	Minimum Curvature
<b>Well Error:</b>	0.0ft	<b>Output errors are at</b>	2.00 sigma
<b>Reference Wellbore</b>	Wellbore #1	<b>Database:</b>	Landmark
<b>Reference Design:</b>	Plan #1 (6-24-14)	<b>Offset TVD Reference:</b>	Offset Datum

Offset Design													Offset Site Error:	0.0 ft
Survey Program: 0-MWD													Offset Well Error:	0.0 ft
Reference		Offset		Semi Major Axis			Distance							Warning
Measured Depth (ft)	Vertical Depth (ft)	Measured Depth (ft)	Vertical Depth (ft)	Reference (ft)	Offset (ft)	Highside Toolface (°)	Offset Wellbore Centre +N/-S (ft)	+E/-W (ft)	Between Centres (ft)	Between Ellipses (ft)	Minimum Separation (ft)	Separation Factor		
5,100.0	5,077.2	5,087.1	5,077.2	13.7	11.6	-156.39	78.7	-157.8	344.4	320.8	23.59	14.603		
5,200.0	5,176.6	5,186.5	5,176.6	14.0	11.8	-157.09	78.7	-157.8	354.4	330.3	24.02	14.751		
5,300.0	5,276.0	5,286.0	5,276.0	14.3	12.0	-157.75	78.7	-157.8	364.4	339.9	24.46	14.895		
5,400.0	5,375.4	5,385.4	5,375.4	14.6	12.2	-158.38	78.7	-157.8	374.4	349.5	24.90	15.036		
5,500.0	5,474.8	5,484.8	5,474.8	14.9	12.4	-158.97	78.7	-157.8	384.5	359.2	25.34	15.173		
5,600.0	5,574.2	5,584.2	5,574.2	15.2	12.6	-159.54	78.7	-157.8	394.6	368.8	25.78	15.306		
5,700.0	5,673.6	5,683.6	5,673.6	15.5	12.8	-160.07	78.7	-157.8	404.8	378.5	26.22	15.436		
5,800.0	5,773.1	5,783.0	5,773.1	15.8	13.1	-160.58	78.7	-157.8	415.0	388.3	26.67	15.562		
5,900.0	5,872.5	5,882.4	5,872.5	16.1	13.3	-161.06	78.7	-157.8	425.2	398.1	27.11	15.684		
5,917.8	5,890.2	5,900.1	5,890.2	16.1	13.3	-161.15	78.7	-157.8	427.0	399.8	27.19	15.706		
6,000.0	5,972.0	5,982.0	5,972.0	16.3	13.5	-161.52	78.7	-157.8	434.3	406.8	27.55	15.766		
6,100.0	6,071.8	6,081.8	6,071.8	16.5	13.7	-161.82	78.7	-157.8	440.2	412.3	27.94	15.759		
6,200.0	6,171.8	6,181.7	6,171.8	16.7	13.9	-161.94	78.7	-157.8	442.8	414.5	28.30	15.649		
6,228.2	6,200.0	6,210.0	6,200.0	16.7	14.0	-174.35	78.7	-157.8	443.0	412.9	30.07	14.728		
6,300.0	6,271.8	6,281.7	6,271.8	16.8	14.1	-174.35	78.7	-157.8	443.0	412.6	30.35	14.594		
6,400.0	6,371.8	6,381.7	6,371.8	17.0	14.4	-174.35	78.7	-157.8	443.0	412.2	30.76	14.402		
6,500.0	6,471.8	6,481.7	6,471.8	17.2	14.6	-174.35	78.7	-157.8	443.0	411.8	31.16	14.215		
6,535.0	6,506.8	6,516.8	6,506.8	17.3	14.7	-174.35	78.7	-157.8	443.0	411.7	31.30	14.151		
6,550.0	6,521.8	6,532.8	6,522.8	17.3	14.7	96.07	78.7	-157.7	443.0	413.2	29.76	14.885		
6,600.0	6,571.7	6,586.3	6,576.2	17.4	14.8	96.04	78.7	-154.5	442.9	413.0	29.95	14.791		
6,650.0	6,621.3	6,639.7	6,629.2	17.4	14.9	95.99	78.8	-147.3	442.9	412.8	30.11	14.708		
6,700.0	6,670.3	6,693.2	6,681.4	17.5	14.9	95.90	78.9	-136.2	442.8	412.6	30.26	14.633		
6,750.0	6,718.5	6,746.5	6,732.6	17.6	15.0	95.78	79.0	-121.3	442.7	412.3	30.40	14.562		
6,800.0	6,765.8	6,799.8	6,782.5	17.6	15.1	95.63	79.1	-102.6	442.6	412.1	30.54	14.491		
6,850.0	6,811.7	6,852.9	6,830.8	17.7	15.2	95.46	79.3	-80.4	442.5	411.8	30.70	14.414		
6,900.0	6,856.2	6,906.0	6,877.1	17.7	15.2	95.25	79.5	-54.7	442.3	411.4	30.88	14.325		
6,950.0	6,898.9	6,958.9	6,921.4	17.8	15.3	95.02	79.7	-25.7	442.2	411.0	31.11	14.215		
7,000.0	6,939.8	7,011.6	6,963.2	17.9	15.5	94.76	79.9	6.4	442.0	410.6	31.40	14.077		
7,050.0	6,978.5	7,064.2	7,002.5	17.9	15.7	94.48	80.2	41.4	441.8	410.0	31.77	13.904		
7,100.0	7,015.0	7,116.6	7,038.9	18.0	16.0	94.18	80.5	79.0	441.6	409.4	32.26	13.689		
7,150.0	7,048.9	7,168.8	7,072.4	18.1	16.3	93.85	80.8	119.0	441.4	408.6	32.87	13.429		
7,200.0	7,080.3	7,220.8	7,102.8	18.3	16.7	93.51	81.1	161.2	441.3	407.6	33.63	13.122		
7,250.0	7,108.8	7,272.5	7,129.9	18.5	17.2	93.15	81.4	205.3	441.1	406.6	34.54	12.772		
7,300.0	7,134.4	7,324.1	7,153.7	18.8	17.8	92.77	81.7	251.0	440.9	405.3	35.61	12.384		
7,350.0	7,156.9	7,375.4	7,174.0	19.3	18.4	92.38	82.1	298.1	440.8	404.0	36.84	11.965		
7,400.0	7,176.3	7,426.5	7,190.9	19.8	19.2	91.98	82.4	346.3	440.7	402.5	38.23	11.528		
7,450.0	7,192.4	7,477.4	7,204.2	20.5	20.0	91.57	82.8	395.4	440.6	400.8	39.76	11.080		
7,500.0	7,205.2	7,528.1	7,214.0	21.2	20.8	91.16	83.2	445.1	440.5	399.1	41.43	10.633		
7,550.0	7,214.6	7,578.5	7,220.2	22.0	21.8	90.73	83.5	495.1	440.4	397.2	43.20	10.195		
7,600.0	7,220.5	7,628.6	7,222.9	22.9	22.7	90.31	83.9	545.2	440.4	395.3	45.06	9.774		
7,650.0	7,222.9	7,678.6	7,223.0	23.9	23.7	90.01	84.3	595.2	440.4	393.4	47.00	9.370		
7,660.0	7,223.0	7,688.7	7,223.0	24.0	23.9	90.00	84.4	605.2	440.4	393.0	47.40	9.291		
7,700.0	7,223.0	7,728.6	7,223.0	24.8	24.8	90.00	84.6	645.2	440.4	391.4	49.03	8.981		
7,800.0	7,223.0	7,828.6	7,223.0	26.9	26.9	90.00	85.4	745.2	440.4	387.1	53.29	8.264		
7,900.0	7,223.0	7,928.6	7,223.0	29.1	29.2	90.00	86.1	845.2	440.4	382.6	57.78	7.622		
8,000.0	7,223.0	8,028.6	7,223.0	31.3	31.5	90.00	86.9	945.2	440.4	377.9	62.45	7.051		
8,100.0	7,223.0	8,128.6	7,223.0	33.7	34.0	90.00	87.6	1,045.2	440.3	373.1	67.27	6.546		
8,200.0	7,223.0	8,228.6	7,223.0	36.1	36.5	90.00	88.3	1,145.2	440.3	368.1	72.20	6.099		
8,300.0	7,223.0	8,328.6	7,223.0	38.6	39.0	90.00	89.1	1,245.2	440.3	363.1	77.22	5.702		
8,400.0	7,223.0	8,428.6	7,223.0	41.1	41.5	90.00	89.8	1,345.2	440.3	358.0	82.33	5.348		
8,500.0	7,223.0	8,528.6	7,223.0	43.7	44.1	90.00	90.6	1,445.2	440.3	352.8	87.49	5.033		
8,600.0	7,223.0	8,628.6	7,223.0	46.3	46.8	90.00	91.3	1,545.2	440.3	347.6	92.71	4.749		

CC - Min centre to center distance or convergent point, SF - min separation factor, ES - min ellipse separation

<b>Company:</b>	Synergy Resources	<b>Local Co-ordinate Reference:</b>	Well SRC Wiedeman 21-5-3CHZ
<b>Project:</b>	Sec.5-T5N-R66W	<b>TVD Reference:</b>	WELL @ 4796.0ft (RKB - 13')
<b>Reference Site:</b>	SRC Wiedeman Pad Sec.5-T5N-R66W	<b>MD Reference:</b>	WELL @ 4796.0ft (RKB - 13')
<b>Site Error:</b>	0.0ft	<b>North Reference:</b>	True
<b>Reference Well:</b>	SRC Wiedeman 21-5-3CHZ	<b>Survey Calculation Method:</b>	Minimum Curvature
<b>Well Error:</b>	0.0ft	<b>Output errors are at</b>	2.00 sigma
<b>Reference Wellbore</b>	Wellbore #1	<b>Database:</b>	Landmark
<b>Reference Design:</b>	Plan #1 (6-24-14)	<b>Offset TVD Reference:</b>	Offset Datum

Offset Design SRC Wiedeman Pad Sec.5-T5N-R66W - SRC Wiedeman A-5-3CHZ - Wellbore #1 - Plan #1 (6-24-14)												Offset Site Error:	0.0 ft
Survey Program: 0-MWD												Offset Well Error:	0.0 ft
Reference		Offset		Semi Major Axis			Distance						Warning
Measured Depth (ft)	Vertical Depth (ft)	Measured Depth (ft)	Vertical Depth (ft)	Reference (ft)	Offset (ft)	Highside Toolface (°)	Offset Wellbore Centre +N/-S (ft)	+E/-W (ft)	Between Centres (ft)	Between Ellipses (ft)	Minimum Separation (ft)	Separation Factor	
8,700.0	7,223.0	8,728.6	7,223.0	48.9	49.4	90.00	92.0	1,645.2	440.3	342.3	97.97	4.494	
8,800.0	7,223.0	8,828.6	7,223.0	51.5	52.0	90.00	92.8	1,745.2	440.3	337.0	103.27	4.264	
8,900.0	7,223.0	8,928.6	7,223.0	54.1	54.7	90.00	93.5	1,845.2	440.3	331.7	108.59	4.054	
9,000.0	7,223.0	9,028.6	7,223.0	56.8	57.4	90.00	94.2	1,945.1	440.3	326.3	113.95	3.863	
9,100.0	7,223.0	9,128.6	7,223.0	59.5	60.1	90.00	95.0	2,045.1	440.2	320.9	119.33	3.689	
9,200.0	7,223.0	9,228.6	7,223.0	62.2	62.8	90.00	95.7	2,145.1	440.2	315.5	124.73	3.529	
9,300.0	7,223.0	9,328.6	7,223.0	64.9	65.5	90.00	96.5	2,245.1	440.2	310.1	130.15	3.382	
9,400.0	7,223.0	9,428.6	7,223.0	67.6	68.2	90.00	97.2	2,345.1	440.2	304.6	135.59	3.247	
9,500.0	7,223.0	9,528.6	7,223.0	70.3	71.0	90.00	97.9	2,445.1	440.2	299.2	141.04	3.121	
9,600.0	7,223.0	9,628.6	7,223.0	73.0	73.7	90.00	98.7	2,545.1	440.2	293.7	146.50	3.005	
9,700.0	7,223.0	9,728.6	7,223.0	75.7	76.4	90.00	99.4	2,645.1	440.2	288.2	151.97	2.896	
9,800.0	7,223.0	9,828.6	7,223.0	78.5	79.2	90.00	100.1	2,745.1	440.2	282.7	157.45	2.796	
9,900.0	7,223.0	9,928.6	7,223.0	81.2	81.9	90.00	100.9	2,845.1	440.2	277.2	162.95	2.701	
10,000.0	7,223.0	10,028.6	7,223.0	83.9	84.7	90.00	101.6	2,945.1	440.1	271.7	168.45	2.613	
10,100.0	7,223.0	10,128.6	7,223.0	86.7	87.4	90.00	102.4	3,045.1	440.1	266.2	173.95	2.530	
10,200.0	7,223.0	10,228.6	7,223.0	89.4	90.2	90.00	103.1	3,145.1	440.1	260.7	179.47	2.452	
10,300.0	7,223.0	10,328.6	7,223.0	92.2	93.0	90.00	103.8	3,245.1	440.1	255.1	184.99	2.379	
10,400.0	7,223.0	10,428.6	7,223.0	95.0	95.7	90.00	104.6	3,345.1	440.1	249.6	190.51	2.310	
10,500.0	7,223.0	10,528.6	7,223.0	97.7	98.5	90.00	105.3	3,445.1	440.1	244.1	196.04	2.245	
10,600.0	7,223.0	10,628.6	7,223.0	100.5	101.3	90.00	106.0	3,545.1	440.1	238.5	201.58	2.183	
10,700.0	7,223.0	10,728.6	7,223.0	103.2	104.0	90.00	106.8	3,645.1	440.1	233.0	207.12	2.125	
10,800.0	7,223.0	10,828.6	7,223.0	106.0	106.8	90.00	107.5	3,745.1	440.1	227.4	212.66	2.069	
10,900.0	7,223.0	10,928.6	7,223.0	108.8	109.6	90.00	108.3	3,845.1	440.1	221.8	218.21	2.017	
11,000.0	7,223.0	11,028.6	7,223.0	111.5	112.3	90.00	109.0	3,945.1	440.0	216.3	223.76	1.967	
11,100.0	7,223.0	11,128.6	7,223.0	114.3	115.1	90.00	109.7	4,045.1	440.0	210.7	229.31	1.919	
11,200.0	7,223.0	11,228.6	7,223.0	117.1	117.9	90.00	110.5	4,145.1	440.0	205.2	234.87	1.874	
11,300.0	7,223.0	11,328.6	7,223.0	119.9	120.7	90.00	111.2	4,245.1	440.0	199.6	240.43	1.830	
11,400.0	7,223.0	11,428.6	7,223.0	122.6	123.5	90.00	112.0	4,345.1	440.0	194.0	245.99	1.789	
11,500.0	7,223.0	11,528.6	7,223.0	125.4	126.2	90.00	112.7	4,445.1	440.0	188.4	251.55	1.749	
11,600.0	7,223.0	11,628.6	7,223.0	128.2	129.0	90.00	113.4	4,545.1	440.0	182.9	257.12	1.711	
11,700.0	7,223.0	11,728.6	7,223.0	131.0	131.8	90.00	114.2	4,645.1	440.0	177.3	262.68	1.675	
11,800.0	7,223.0	11,828.6	7,223.0	133.8	134.6	90.00	114.9	4,745.1	440.0	171.7	268.25	1.640	
11,900.0	7,223.0	11,928.6	7,223.0	136.5	137.4	90.00	115.6	4,845.1	440.0	166.1	273.83	1.607	
12,000.0	7,223.0	12,028.6	7,223.0	139.3	140.2	90.00	116.4	4,945.1	439.9	160.5	279.40	1.575	
12,100.0	7,223.0	12,128.6	7,223.0	142.1	143.0	90.00	117.1	5,045.1	439.9	155.0	284.97	1.544	
12,200.0	7,223.0	12,228.6	7,223.0	144.9	145.8	90.00	117.9	5,145.1	439.9	149.4	290.55	1.514	
12,300.0	7,223.0	12,328.6	7,223.0	147.7	148.5	90.00	118.6	5,245.1	439.9	143.8	296.13	1.486 Level 3	
12,400.0	7,223.0	12,428.6	7,223.0	150.5	151.3	90.00	119.3	5,345.1	439.9	138.2	301.71	1.458 Level 3	
12,500.0	7,223.0	12,528.6	7,223.0	153.3	154.1	90.00	120.1	5,445.1	439.9	132.6	307.29	1.432 Level 3	
12,600.0	7,223.0	12,628.6	7,223.0	156.1	156.9	90.00	120.8	5,545.0	439.9	127.0	312.87	1.406 Level 3	
12,700.0	7,223.0	12,728.6	7,223.0	158.8	159.7	90.00	121.5	5,645.0	439.9	121.4	318.45	1.381 Level 3	
12,800.0	7,223.0	12,828.6	7,223.0	161.6	162.5	90.00	122.3	5,745.0	439.9	115.8	324.04	1.357 Level 3	
12,900.0	7,223.0	12,928.6	7,223.0	164.4	165.3	90.00	123.0	5,845.0	439.8	110.2	329.62	1.334 Level 3	
13,000.0	7,223.0	13,028.6	7,223.0	167.2	168.1	90.00	123.8	5,945.0	439.8	104.6	335.21	1.312 Level 3	
13,100.0	7,223.0	13,128.6	7,223.0	170.0	170.9	90.00	124.5	6,045.0	439.8	99.0	340.79	1.291 Level 3	
13,200.0	7,223.0	13,228.6	7,223.0	172.8	173.7	90.00	125.2	6,145.0	439.8	93.4	346.38	1.270 Level 3	
13,300.0	7,223.0	13,328.6	7,223.0	175.6	176.5	90.00	126.0	6,245.0	439.8	87.8	351.97	1.250 Level 2	
13,400.0	7,223.0	13,428.6	7,223.0	178.4	179.3	90.00	126.7	6,345.0	439.8	82.2	357.56	1.230 Level 2	
13,500.0	7,223.0	13,528.6	7,223.0	181.2	182.1	90.00	127.4	6,445.0	439.8	76.6	363.15	1.211 Level 2	
13,600.0	7,223.0	13,628.6	7,223.0	184.0	184.9	90.00	128.2	6,545.0	439.8	71.0	368.74	1.193 Level 2	
13,700.0	7,223.0	13,728.6	7,223.0	186.8	187.6	90.00	128.9	6,645.0	439.8	65.4	374.33	1.175 Level 2	
13,800.0	7,223.0	13,828.6	7,223.0	189.6	190.4	90.00	129.7	6,745.0	439.8	59.8	379.92	1.157 Level 2	

CC - Min centre to center distance or convergent point, SF - min separation factor, ES - min ellipse separation

<b>Company:</b>	Synergy Resources	<b>Local Co-ordinate Reference:</b>	Well SRC Wiedeman 21-5-3CHZ
<b>Project:</b>	Sec.5-T5N-R66W	<b>TVD Reference:</b>	WELL @ 4796.0ft (RKB - 13')
<b>Reference Site:</b>	SRC Wiedeman Pad Sec.5-T5N-R66W	<b>MD Reference:</b>	WELL @ 4796.0ft (RKB - 13')
<b>Site Error:</b>	0.0ft	<b>North Reference:</b>	True
<b>Reference Well:</b>	SRC Wiedeman 21-5-3CHZ	<b>Survey Calculation Method:</b>	Minimum Curvature
<b>Well Error:</b>	0.0ft	<b>Output errors are at</b>	2.00 sigma
<b>Reference Wellbore</b>	Wellbore #1	<b>Database:</b>	Landmark
<b>Reference Design:</b>	Plan #1 (6-24-14)	<b>Offset TVD Reference:</b>	Offset Datum

Offset Design SRC Wiedeman Pad Sec.5-T5N-R66W - SRC Wiedeman A-5-3CHZ - Wellbore #1 - Plan #1 (6-24-14)													Offset Site Error:	0.0 ft
Survey Program: 0-MWD													Offset Well Error:	0.0 ft
Reference		Offset		Semi Major Axis			Distance							Warning
Measured Depth (ft)	Vertical Depth (ft)	Measured Depth (ft)	Vertical Depth (ft)	Reference (ft)	Offset (ft)	Highside Toolface (°)	Offset Wellbore Centre +N/-S (ft)	+E/-W (ft)	Between Centres (ft)	Between Ellipses (ft)	Minimum Separation (ft)	Separation Factor		
13,900.0	7,223.0	13,928.6	7,223.0	192.4	193.2	90.00	130.4	6,845.0	439.7	54.2	385.52	1.141	Level 2	
14,000.0	7,223.0	14,028.6	7,223.0	195.1	196.0	90.00	131.1	6,945.0	439.7	48.6	391.11	1.124	Level 2	
14,100.0	7,223.0	14,128.6	7,223.0	197.9	198.8	90.00	131.9	7,045.0	439.7	43.0	396.70	1.108	Level 2	
14,200.0	7,223.0	14,228.6	7,223.0	200.7	201.6	90.00	132.6	7,145.0	439.7	37.4	402.30	1.093	Level 2	
14,300.0	7,223.0	14,328.6	7,223.0	203.5	204.4	90.00	133.4	7,245.0	439.7	31.8	407.89	1.078	Level 2	
14,400.0	7,223.0	14,428.6	7,223.0	206.3	207.2	90.00	134.1	7,345.0	439.7	26.2	413.49	1.063	Level 2	
14,500.0	7,223.0	14,528.6	7,223.0	209.1	210.0	90.00	134.8	7,445.0	439.7	20.6	419.09	1.049	Level 2	
14,600.0	7,223.0	14,628.6	7,223.0	211.9	212.8	90.00	135.6	7,545.0	439.7	15.0	424.68	1.035	Level 2	
14,700.0	7,223.0	14,728.6	7,223.0	214.7	215.6	90.00	136.3	7,645.0	439.7	9.4	430.28	1.022	Level 2	
14,800.0	7,223.0	14,828.6	7,223.0	217.5	218.4	90.00	137.0	7,745.0	439.6	3.8	435.88	1.009	Level 2	
14,900.0	7,223.0	14,928.6	7,223.0	220.3	221.2	90.00	137.8	7,845.0	439.6	-1.8	441.48	0.996	Level 1	
15,000.0	7,223.0	15,028.6	7,223.0	223.1	224.0	90.00	138.5	7,945.0	439.6	-7.4	447.07	0.983	Level 1	
15,100.0	7,223.0	15,128.6	7,223.0	225.9	226.8	90.00	139.3	8,045.0	439.6	-13.1	452.67	0.971	Level 1	
15,200.0	7,223.0	15,228.6	7,223.0	228.7	229.6	90.00	140.0	8,145.0	439.6	-18.7	458.27	0.959	Level 1	
15,300.0	7,223.0	15,328.6	7,223.0	231.5	232.4	90.00	140.7	8,245.0	439.6	-24.3	463.87	0.948	Level 1	
15,400.0	7,223.0	15,428.6	7,223.0	234.3	235.2	90.00	141.5	8,345.0	439.6	-29.9	469.47	0.936	Level 1	
15,500.0	7,223.0	15,528.6	7,223.0	237.1	238.0	90.00	142.2	8,445.0	439.6	-35.5	475.07	0.925	Level 1	
15,600.0	7,223.0	15,628.6	7,223.0	239.9	240.8	90.00	142.9	8,545.0	439.6	-41.1	480.67	0.914	Level 1	
15,700.0	7,223.0	15,728.6	7,223.0	242.7	243.6	90.00	143.7	8,645.0	439.6	-46.7	486.27	0.904	Level 1	
15,800.0	7,223.0	15,828.6	7,223.0	245.5	246.4	90.00	144.4	8,745.0	439.5	-52.3	491.87	0.894	Level 1	
15,900.0	7,223.0	15,928.6	7,223.0	248.3	249.2	90.00	145.2	8,845.0	439.5	-57.9	497.47	0.884	Level 1	
16,000.0	7,223.0	16,028.6	7,223.0	251.1	252.0	90.00	145.9	8,945.0	439.5	-63.6	503.08	0.874	Level 1	
16,100.0	7,223.0	16,128.6	7,223.0	253.9	254.8	90.00	146.6	9,045.0	439.5	-69.2	508.68	0.864	Level 1	
16,200.0	7,223.0	16,228.6	7,223.0	256.7	257.6	90.00	147.4	9,145.0	439.5	-74.8	514.28	0.855	Level 1	
16,300.0	7,223.0	16,328.6	7,223.0	259.5	260.4	90.00	148.1	9,244.9	439.5	-80.4	519.88	0.845	Level 1	
16,400.0	7,223.0	16,428.6	7,223.0	262.3	263.2	90.00	148.8	9,344.9	439.5	-86.0	525.49	0.836	Level 1	
16,500.0	7,223.0	16,528.6	7,223.0	265.1	266.0	90.00	149.6	9,444.9	439.5	-91.6	531.09	0.827	Level 1	
16,600.0	7,223.0	16,628.6	7,223.0	267.9	268.8	90.00	150.3	9,544.9	439.5	-97.2	536.69	0.819	Level 1	
16,700.0	7,223.0	16,728.6	7,223.0	270.7	271.6	90.00	151.1	9,644.9	439.5	-102.8	542.30	0.810	Level 1	
16,800.0	7,223.0	16,828.6	7,223.0	273.5	274.4	90.00	151.8	9,744.9	439.4	-108.5	547.90	0.802	Level 1	
16,900.0	7,223.0	16,928.6	7,223.0	276.3	277.2	90.00	152.5	9,844.9	439.4	-114.1	553.50	0.794	Level 1	
16,969.3	7,223.0	16,997.9	7,223.0	278.3	279.2	90.00	153.1	9,914.2	439.4	-118.0	557.39	0.788	Level 1	
17,000.0	7,223.0	17,021.1	7,223.0	279.1	279.8	90.00	153.2	9,937.4	439.5	-119.4	558.90	0.786	Level 1, ES, SF	
17,035.4	7,223.0	17,021.1	7,223.0	279.8	279.8	90.00	153.2	9,937.4	441.5	-118.0	559.54	0.789	Level 1	

<b>Company:</b>	Synergy Resources	<b>Local Co-ordinate Reference:</b>	Well SRC Wiedeman 21-5-3CHZ
<b>Project:</b>	Sec.5-T5N-R66W	<b>TVD Reference:</b>	WELL @ 4796.0ft (RKB - 13')
<b>Reference Site:</b>	SRC Wiedeman Pad Sec.5-T5N-R66W	<b>MD Reference:</b>	WELL @ 4796.0ft (RKB - 13')
<b>Site Error:</b>	0.0ft	<b>North Reference:</b>	True
<b>Reference Well:</b>	SRC Wiedeman 21-5-3CHZ	<b>Survey Calculation Method:</b>	Minimum Curvature
<b>Well Error:</b>	0.0ft	<b>Output errors are at</b>	2.00 sigma
<b>Reference Wellbore</b>	Wellbore #1	<b>Database:</b>	Landmark
<b>Reference Design:</b>	Plan #1 (6-24-14)	<b>Offset TVD Reference:</b>	Offset Datum

Offset Design SRC Wiedeman Pad Sec.5-T5N-R66W - SRC Wiedeman A-5-3NHZ - Wellbore #1 - Plan #1 (6-24-14)													Offset Site Error:	0.0 ft
Survey Program: 0-MWD													Offset Well Error:	0.0 ft
Reference		Offset		Semi Major Axis			Distance							Warning
Measured Depth (ft)	Vertical Depth (ft)	Measured Depth (ft)	Vertical Depth (ft)	Reference (ft)	Offset (ft)	Highside Toolface (°)	Offset Wellbore Centre +N/-S (ft)	+E/-W (ft)	Between Centres (ft)	Between Ellipses (ft)	Minimum Separation (ft)	Separation Factor		
0.0	0.0	0.0	0.0	0.0	0.0	-174.68	-14.9	-1.4	15.0	15.0	0.00	N/A		
100.0	100.0	100.0	100.0	0.1	0.1	-174.68	-14.9	-1.4	15.0	14.8	0.22	66.743		
200.0	200.0	200.0	200.0	0.3	0.3	-174.68	-14.9	-1.4	15.0	14.3	0.67	22.248		
300.0	300.0	300.0	300.0	0.6	0.6	-174.68	-14.9	-1.4	15.0	13.9	1.12	13.349		
400.0	400.0	400.0	400.0	0.8	0.8	-174.68	-14.9	-1.4	15.0	13.4	1.57	9.535		
500.0	500.0	500.0	500.0	1.0	1.0	-174.68	-14.9	-1.4	15.0	13.0	2.02	7.416		
600.0	600.0	600.0	600.0	1.2	1.2	-174.68	-14.9	-1.4	15.0	12.5	2.47	6.068		
700.0	700.0	700.0	700.0	1.5	1.5	-174.68	-14.9	-1.4	15.0	12.1	2.92	5.134		
800.0	800.0	800.0	800.0	1.7	1.7	-174.68	-14.9	-1.4	15.0	11.6	3.37	4.450		
900.0	900.0	900.0	900.0	1.9	1.9	-174.68	-14.9	-1.4	15.0	11.2	3.82	3.926		
1,000.0	1,000.0	1,000.0	1,000.0	2.1	2.1	-174.68	-14.9	-1.4	15.0	10.7	4.27	3.513 CC		
1,100.0	1,100.0	1,100.0	1,100.0	2.4	2.4	-164.10	-14.9	-1.4	16.7	12.0	4.72	3.533		
1,200.0	1,199.8	1,199.8	1,199.8	2.6	2.6	-167.85	-14.9	-1.4	21.8	16.6	5.16	4.212		
1,300.0	1,299.5	1,299.5	1,299.5	2.8	2.8	-171.29	-14.9	-1.4	30.3	24.7	5.61	5.411		
1,310.5	1,309.8	1,309.8	1,309.8	2.8	2.8	-171.60	-14.9	-1.4	31.4	25.8	5.65	5.562		
1,400.0	1,398.9	1,398.9	1,398.9	3.1	3.0	-173.57	-14.9	-1.4	41.0	35.0	6.05	6.780		
1,500.0	1,498.3	1,498.3	1,498.3	3.3	3.3	-174.91	-14.9	-1.4	51.8	45.3	6.50	7.966		
1,600.0	1,597.7	1,599.8	1,599.7	3.6	3.5	-175.38	-13.3	-2.1	60.9	54.0	6.96	8.761		
1,700.0	1,697.1	1,701.8	1,701.6	3.8	3.7	-174.92	-8.4	-4.2	66.7	59.3	7.41	8.995		
1,800.0	1,796.5	1,804.1	1,803.5	4.1	3.9	-173.68	-0.1	-7.7	69.0	61.1	7.87	8.761		
1,900.0	1,895.9	1,904.1	1,902.9	4.4	4.2	-172.08	9.7	-11.9	69.6	61.3	8.34	8.348		
2,000.0	1,995.3	2,004.1	2,002.4	4.7	4.4	-170.51	19.4	-16.1	70.3	61.5	8.80	7.981		
2,100.0	2,094.8	2,104.0	2,101.8	4.9	4.7	-168.96	29.2	-20.3	71.0	61.7	9.28	7.652		
2,200.0	2,194.2	2,204.0	2,201.2	5.2	4.9	-167.46	39.0	-24.5	71.7	62.0	9.75	7.357		
2,300.0	2,293.6	2,304.0	2,300.6	5.5	5.2	-165.98	48.8	-28.7	72.6	62.3	10.23	7.091		
2,400.0	2,393.0	2,404.0	2,400.0	5.8	5.5	-164.54	58.5	-32.9	73.4	62.7	10.72	6.851		
2,500.0	2,492.4	2,504.0	2,499.4	6.1	5.7	-163.13	68.3	-37.1	74.3	63.1	11.21	6.632		
2,600.0	2,591.8	2,603.9	2,598.8	6.4	6.0	-161.75	78.1	-41.3	75.3	63.6	11.70	6.433		
2,700.0	2,691.2	2,703.9	2,698.2	6.6	6.3	-160.42	87.8	-45.5	76.3	64.1	12.20	6.250		
2,800.0	2,790.7	2,803.9	2,797.7	6.9	6.5	-159.11	97.6	-49.7	77.3	64.6	12.71	6.084		
2,900.0	2,890.1	2,903.9	2,897.1	7.2	6.8	-157.84	107.4	-53.9	78.4	65.2	13.22	5.930		
3,000.0	2,989.5	3,003.9	2,996.5	7.5	7.1	-156.61	117.2	-58.1	79.5	65.8	13.73	5.789		
3,100.0	3,088.9	3,103.8	3,095.9	7.8	7.4	-155.41	126.9	-62.3	80.7	66.4	14.25	5.659		
3,200.0	3,188.3	3,203.8	3,195.3	8.1	7.6	-154.25	136.7	-66.5	81.8	67.1	14.78	5.538		
3,300.0	3,287.7	3,303.8	3,294.7	8.4	7.9	-153.12	146.5	-70.6	83.1	67.7	15.31	5.426		
3,400.0	3,387.1	3,403.8	3,394.1	8.7	8.2	-152.02	156.3	-74.8	84.3	68.5	15.84	5.323		
3,500.0	3,486.5	3,503.8	3,493.5	9.0	8.5	-150.95	166.0	-79.0	85.6	69.2	16.37	5.226		
3,600.0	3,586.0	3,603.7	3,593.0	9.3	8.8	-149.92	175.8	-83.2	86.9	70.0	16.91	5.137		
3,700.0	3,685.4	3,703.7	3,692.4	9.6	9.1	-148.92	185.6	-87.4	88.2	70.8	17.46	5.053		
3,800.0	3,784.8	3,803.7	3,791.8	9.8	9.4	-147.94	195.4	-91.6	89.6	71.6	18.00	4.975		
3,900.0	3,884.2	3,903.7	3,891.2	10.1	9.6	-147.00	205.1	-95.8	91.0	72.4	18.55	4.902		
4,000.0	3,983.6	4,003.7	3,990.6	10.4	9.9	-146.08	214.9	-100.0	92.4	73.3	19.11	4.834		
4,100.0	4,083.0	4,103.6	4,090.0	10.7	10.2	-145.20	224.7	-104.2	93.8	74.1	19.67	4.770		
4,200.0	4,182.4	4,203.6	4,189.4	11.0	10.5	-144.34	234.5	-108.4	95.2	75.0	20.22	4.710		
4,300.0	4,281.9	4,303.6	4,288.8	11.3	10.8	-143.50	244.2	-112.6	96.7	75.9	20.79	4.653		
4,400.0	4,381.3	4,403.6	4,388.2	11.6	11.1	-142.69	254.0	-116.8	98.2	76.9	21.35	4.600		
4,500.0	4,480.7	4,503.5	4,487.7	11.9	11.4	-141.91	263.8	-121.0	99.7	77.8	21.92	4.550		
4,600.0	4,580.1	4,603.5	4,587.1	12.2	11.7	-141.15	273.5	-125.2	101.3	78.8	22.49	4.503		
4,700.0	4,679.5	4,703.5	4,686.5	12.5	12.0	-140.41	283.3	-129.4	102.8	79.7	23.06	4.459		
4,800.0	4,778.9	4,801.4	4,784.0	12.8	12.2	-140.29	291.6	-132.9	105.3	81.7	23.56	4.469		
4,900.0	4,878.3	4,900.0	4,882.4	13.1	12.4	-141.54	296.9	-135.2	109.9	86.0	23.93	4.593		
5,000.0	4,977.7	4,996.0	4,978.4	13.4	12.6	-143.85	299.0	-136.1	116.9	92.7	24.23	4.825		

CC - Min centre to center distance or convergent point, SF - min separation factor, ES - min ellipse separation



<b>Company:</b>	Synergy Resources	<b>Local Co-ordinate Reference:</b>	Well SRC Wiedeman 21-5-3CHZ
<b>Project:</b>	Sec.5-T5N-R66W	<b>TVD Reference:</b>	WELL @ 4796.0ft (RKB - 13')
<b>Reference Site:</b>	SRC Wiedeman Pad Sec.5-T5N-R66W	<b>MD Reference:</b>	WELL @ 4796.0ft (RKB - 13')
<b>Site Error:</b>	0.0ft	<b>North Reference:</b>	True
<b>Reference Well:</b>	SRC Wiedeman 21-5-3CHZ	<b>Survey Calculation Method:</b>	Minimum Curvature
<b>Well Error:</b>	0.0ft	<b>Output errors are at</b>	2.00 sigma
<b>Reference Wellbore</b>	Wellbore #1	<b>Database:</b>	Landmark
<b>Reference Design:</b>	Plan #1 (6-24-14)	<b>Offset TVD Reference:</b>	Offset Datum

Offset Design												Offset Site Error:	0.0 ft
Survey Program: 0-MWD												Offset Well Error:	0.0 ft
Reference		Offset		Semi Major Axis			Distance						
Measured Depth (ft)	Vertical Depth (ft)	Measured Depth (ft)	Vertical Depth (ft)	Reference (ft)	Offset (ft)	Highside Toolface (°)	Offset Wellbore Centre +N/-S (ft)	+E/-W (ft)	Between Centres (ft)	Between Ellipses (ft)	Minimum Separation (ft)	Separation Factor	Warning
5,100.0	5,077.2	5,094.8	5,077.2	13.7	12.7	-146.71	299.1	-136.1	125.7	101.2	24.50	5.133	
5,200.0	5,176.6	5,194.2	5,176.6	14.0	12.9	-149.23	299.1	-136.1	134.9	110.1	24.82	5.437	
5,300.0	5,276.0	5,293.6	5,276.0	14.3	13.1	-151.42	299.1	-136.1	144.3	119.2	25.15	5.738	
5,400.0	5,375.4	5,393.1	5,375.4	14.6	13.3	-153.34	299.1	-136.1	153.9	128.4	25.51	6.035	
5,500.0	5,474.8	5,492.5	5,474.8	14.9	13.5	-155.04	299.1	-136.1	163.7	137.8	25.88	6.326	
5,600.0	5,574.2	5,591.9	5,574.2	15.2	13.7	-156.55	299.1	-136.1	173.6	147.3	26.25	6.611	
5,700.0	5,673.6	5,691.3	5,673.6	15.5	13.9	-157.89	299.1	-136.1	183.5	156.9	26.64	6.890	
5,800.0	5,773.1	5,790.7	5,773.1	15.8	14.1	-159.09	299.1	-136.1	193.6	166.6	27.04	7.161	
5,900.0	5,872.5	5,890.1	5,872.5	16.1	14.3	-160.18	299.1	-136.1	203.8	176.3	27.44	7.426	
5,917.8	5,890.2	5,907.8	5,890.2	16.1	14.3	-160.36	299.1	-136.1	205.6	178.1	27.51	7.472	
6,000.0	5,972.0	5,989.6	5,972.0	16.3	14.5	-161.10	299.1	-136.1	212.9	185.0	27.84	7.647	
6,100.0	6,071.8	6,089.5	6,071.8	16.5	14.7	-161.67	299.1	-136.1	218.8	190.6	28.19	7.759	
6,200.0	6,171.8	6,189.4	6,171.8	16.7	14.9	-161.91	299.1	-136.1	221.4	192.8	28.53	7.758	
6,228.2	6,200.0	6,217.6	6,200.0	16.7	14.9	-174.32	299.1	-136.1	221.5	190.4	31.08	7.126	
6,300.0	6,271.8	6,289.4	6,271.8	16.8	15.1	-174.32	299.1	-136.1	221.5	190.1	31.35	7.066	
6,400.0	6,371.8	6,390.6	6,372.9	17.0	15.3	-174.55	299.1	-135.2	221.4	189.7	31.74	6.975	
6,500.0	6,471.8	6,492.3	6,473.8	17.2	15.4	-177.73	299.2	-122.9	220.5	188.2	32.24	6.839	
6,535.0	6,506.8	6,526.8	6,507.5	17.3	15.5	-179.66	299.3	-115.5	220.3	187.8	32.43	6.791	
6,547.6	6,519.4	6,539.1	6,519.4	17.3	15.5	90.00	299.3	-112.5	220.2	190.6	29.64	7.431	
6,550.0	6,521.8	6,541.4	6,521.6	17.3	15.5	89.85	299.3	-111.9	220.2	190.6	29.64	7.431	
6,600.0	6,571.7	6,589.5	6,567.7	17.4	15.6	86.86	299.4	-97.9	220.6	190.9	29.70	7.426	
6,650.0	6,621.3	6,636.9	6,612.0	17.4	15.6	83.93	299.5	-81.1	221.5	191.8	29.79	7.438	
6,700.0	6,670.3	6,683.6	6,654.5	17.5	15.7	81.06	299.7	-61.8	223.1	193.2	29.89	7.464	
6,750.0	6,718.5	6,729.7	6,695.1	17.6	15.7	78.29	299.8	-40.1	225.1	195.1	30.01	7.501	
6,800.0	6,765.8	6,775.2	6,733.8	17.6	15.8	75.64	300.0	-16.1	227.7	197.5	30.16	7.550	
6,850.0	6,811.7	6,820.1	6,770.3	17.7	15.8	73.11	300.2	10.0	230.6	200.3	30.31	7.608	
6,900.0	6,856.2	6,864.5	6,804.8	17.7	15.9	70.72	300.4	37.9	233.8	203.4	30.47	7.674	
6,950.0	6,898.9	6,908.4	6,837.1	17.8	15.9	68.48	300.6	67.6	237.3	206.7	30.63	7.748	
7,000.0	6,939.8	6,950.0	6,866.1	17.9	16.0	66.47	300.8	97.5	241.0	210.2	30.79	7.827	
7,050.0	6,978.5	6,994.9	6,895.2	17.9	16.3	64.46	301.1	131.6	244.8	213.8	30.97	7.903	
7,100.0	7,015.0	7,037.5	6,920.9	18.0	16.6	62.68	301.3	165.6	248.6	217.4	31.16	7.977	
7,150.0	7,048.9	7,079.8	6,944.4	18.1	16.9	61.05	301.6	200.9	252.4	221.0	31.37	8.046	
7,200.0	7,080.3	7,121.8	6,965.6	18.3	17.4	59.57	301.9	237.1	256.1	224.5	31.60	8.104	
7,250.0	7,108.8	7,163.6	6,984.5	18.5	17.8	58.24	302.1	274.3	259.6	227.7	31.87	8.146	
7,300.0	7,134.4	7,205.0	7,001.1	18.8	18.4	57.05	302.4	312.3	263.0	230.8	32.19	8.169	
7,350.0	7,156.9	7,250.0	7,016.6	19.3	19.0	55.92	302.7	354.5	266.1	233.5	32.62	8.160	
7,400.0	7,176.3	7,287.3	7,027.4	19.8	19.6	55.07	303.0	390.2	269.0	235.9	33.07	8.134	
7,450.0	7,192.4	7,328.1	7,037.1	20.5	20.3	54.28	303.3	429.9	271.5	237.9	33.63	8.073	
7,500.0	7,205.2	7,368.9	7,044.5	21.2	21.0	53.61	303.6	469.9	273.8	239.5	34.30	7.981	
7,550.0	7,214.6	7,409.5	7,049.6	22.0	21.7	53.07	303.9	510.2	275.6	240.5	35.07	7.860	
7,600.0	7,220.5	7,450.0	7,052.4	22.9	22.5	52.64	304.2	550.6	277.1	241.2	35.94	7.709	
7,650.0	7,222.9	7,493.0	7,053.0	23.9	23.3	52.34	304.5	593.6	278.1	241.2	36.97	7.522	
7,660.0	7,223.0	7,503.0	7,053.0	24.0	23.5	52.33	304.6	603.6	278.2	240.9	37.23	7.471	
7,700.0	7,223.0	7,543.0	7,053.0	24.8	24.4	52.33	304.9	643.6	278.2	239.6	38.52	7.221	
7,800.0	7,223.0	7,643.0	7,053.0	26.9	26.5	52.33	305.6	743.5	278.2	236.3	41.89	6.640	
7,900.0	7,223.0	7,743.0	7,053.0	29.1	28.8	52.33	306.3	843.5	278.2	232.7	45.46	6.118	
8,000.0	7,223.0	7,843.0	7,053.0	31.3	31.1	52.33	307.1	943.5	278.2	229.0	49.19	5.654	
8,100.0	7,223.0	7,943.0	7,053.0	33.7	33.5	52.32	307.8	1,043.5	278.1	225.1	53.05	5.244	
8,200.0	7,223.0	8,043.0	7,053.0	36.1	36.0	52.32	308.5	1,143.5	278.1	221.1	57.00	4.880	
8,300.0	7,223.0	8,143.0	7,053.0	38.6	38.5	52.32	309.3	1,243.5	278.1	217.1	61.03	4.557	
8,400.0	7,223.0	8,243.0	7,053.0	41.1	41.1	52.32	310.0	1,343.5	278.1	213.0	65.13	4.271	
8,500.0	7,223.0	8,343.0	7,053.0	43.7	43.7	52.32	310.7	1,443.5	278.1	208.8	69.28	4.015	

CC - Min centre to center distance or convergent point, SF - min separation factor, ES - min ellipse separation

<b>Company:</b>	Synergy Resources	<b>Local Co-ordinate Reference:</b>	Well SRC Wiedeman 21-5-3CHZ
<b>Project:</b>	Sec.5-T5N-R66W	<b>TVD Reference:</b>	WELL @ 4796.0ft (RKB - 13')
<b>Reference Site:</b>	SRC Wiedeman Pad Sec.5-T5N-R66W	<b>MD Reference:</b>	WELL @ 4796.0ft (RKB - 13')
<b>Site Error:</b>	0.0ft	<b>North Reference:</b>	True
<b>Reference Well:</b>	SRC Wiedeman 21-5-3CHZ	<b>Survey Calculation Method:</b>	Minimum Curvature
<b>Well Error:</b>	0.0ft	<b>Output errors are at</b>	2.00 sigma
<b>Reference Wellbore</b>	Wellbore #1	<b>Database:</b>	Landmark
<b>Reference Design:</b>	Plan #1 (6-24-14)	<b>Offset TVD Reference:</b>	Offset Datum

Offset Design		SRC Wiedeman Pad Sec.5-T5N-R66W - SRC Wiedeman A-5-3NHZ - Wellbore #1 - Plan #1 (6-24-14)										Offset Site Error:		0.0 ft
Survey Program: 0-MWD												Offset Well Error:		0.0 ft
Reference		Offset		Semi Major Axis			Distance							Warning
Measured Depth (ft)	Vertical Depth (ft)	Measured Depth (ft)	Vertical Depth (ft)	Reference (ft)	Offset (ft)	Highside Toolface (°)	Offset Wellbore Centre +N/-S (ft)	+E/-W (ft)	Between Centres (ft)	Between Ellipses (ft)	Minimum Separation (ft)	Separation Factor		
8,600.0	7,223.0	8,443.0	7,053.0	46.3	46.3	52.32	311.5	1,543.5	278.1	204.6	73.47	3.785		
8,700.0	7,223.0	8,543.0	7,053.0	48.9	48.9	52.32	312.2	1,643.5	278.1	200.4	77.70	3.579		
8,800.0	7,223.0	8,643.0	7,053.0	51.5	51.5	52.32	312.9	1,743.5	278.1	196.1	81.96	3.393		
8,900.0	7,223.0	8,743.0	7,053.0	54.1	54.2	52.32	313.7	1,843.5	278.1	191.8	86.25	3.224		
9,000.0	7,223.0	8,843.0	7,053.0	56.8	56.9	52.32	314.4	1,943.5	278.1	187.5	90.57	3.071		
9,100.0	7,223.0	8,943.0	7,053.0	59.5	59.6	52.32	315.1	2,043.5	278.1	183.2	94.90	2.930		
9,200.0	7,223.0	9,043.0	7,053.0	62.2	62.3	52.31	315.9	2,143.5	278.1	178.8	99.25	2.802		
9,300.0	7,223.0	9,143.0	7,053.0	64.9	65.0	52.31	316.6	2,243.5	278.1	174.5	103.61	2.684		
9,400.0	7,223.0	9,243.0	7,053.0	67.6	67.7	52.31	317.3	2,343.5	278.1	170.1	107.99	2.575		
9,500.0	7,223.0	9,343.0	7,053.0	70.3	70.4	52.31	318.1	2,443.5	278.1	165.7	112.38	2.474		
9,600.0	7,223.0	9,443.0	7,053.0	73.0	73.2	52.31	318.8	2,543.5	278.1	161.3	116.78	2.381		
9,700.0	7,223.0	9,543.0	7,053.0	75.7	75.9	52.31	319.5	2,643.5	278.1	156.9	121.19	2.294		
9,800.0	7,223.0	9,643.0	7,053.0	78.5	78.7	52.31	320.3	2,743.5	278.1	152.5	125.60	2.214		
9,900.0	7,223.0	9,743.0	7,053.0	81.2	81.4	52.31	321.0	2,843.5	278.0	148.0	130.03	2.138		
10,000.0	7,223.0	9,843.0	7,053.0	83.9	84.2	52.31	321.7	2,943.5	278.0	143.6	134.46	2.068		
10,100.0	7,223.0	9,943.0	7,053.0	86.7	86.9	52.31	322.5	3,043.5	278.0	139.1	138.89	2.002		
10,200.0	7,223.0	10,043.0	7,053.0	89.4	89.7	52.31	323.2	3,143.5	278.0	134.7	143.33	1.940		
10,300.0	7,223.0	10,143.0	7,053.0	92.2	92.4	52.30	324.0	3,243.5	278.0	130.2	147.78	1.881		
10,400.0	7,223.0	10,243.0	7,053.0	95.0	95.2	52.30	324.7	3,343.5	278.0	125.8	152.23	1.826		
10,500.0	7,223.0	10,343.0	7,053.0	97.7	98.0	52.30	325.4	3,443.5	278.0	121.3	156.69	1.774		
10,600.0	7,223.0	10,443.0	7,053.0	100.5	100.7	52.30	326.2	3,543.5	278.0	116.9	161.15	1.725		
10,700.0	7,223.0	10,543.0	7,053.0	103.2	103.5	52.30	326.9	3,643.5	278.0	112.4	165.61	1.679		
10,800.0	7,223.0	10,643.0	7,053.0	106.0	106.3	52.30	327.6	3,743.5	278.0	107.9	170.07	1.635		
10,900.0	7,223.0	10,743.0	7,053.0	108.8	109.0	52.30	328.4	3,843.5	278.0	103.4	174.54	1.593		
11,000.0	7,223.0	10,843.0	7,053.0	111.5	111.8	52.30	329.1	3,943.5	278.0	99.0	179.01	1.553		
11,100.0	7,223.0	10,943.0	7,053.0	114.3	114.6	52.30	329.8	4,043.5	278.0	94.5	183.49	1.515		
11,200.0	7,223.0	11,043.0	7,053.0	117.1	117.4	52.30	330.6	4,143.5	278.0	90.0	187.96	1.479 Level 3		
11,300.0	7,223.0	11,143.0	7,053.0	119.9	120.2	52.30	331.3	4,243.5	278.0	85.5	192.44	1.444 Level 3		
11,400.0	7,223.0	11,243.0	7,053.0	122.6	122.9	52.30	332.0	4,343.5	278.0	81.0	196.92	1.412 Level 3		
11,500.0	7,223.0	11,343.0	7,053.0	125.4	125.7	52.29	332.8	4,443.4	278.0	76.6	201.40	1.380 Level 3		
11,600.0	7,223.0	11,443.0	7,053.0	128.2	128.5	52.29	333.5	4,543.4	278.0	72.1	205.88	1.350 Level 3		
11,700.0	7,223.0	11,543.0	7,053.0	131.0	131.3	52.29	334.2	4,643.4	277.9	67.6	210.37	1.321 Level 3		
11,800.0	7,223.0	11,643.0	7,053.0	133.8	134.1	52.29	335.0	4,743.4	277.9	63.1	214.86	1.294 Level 3		
11,900.0	7,223.0	11,743.0	7,053.0	136.5	136.9	52.29	335.7	4,843.4	277.9	58.6	219.34	1.267 Level 3		
12,000.0	7,223.0	11,843.0	7,053.0	139.3	139.6	52.29	336.4	4,943.4	277.9	54.1	223.83	1.242 Level 2		
12,100.0	7,223.0	11,943.0	7,053.0	142.1	142.4	52.29	337.2	5,043.4	277.9	49.6	228.32	1.217 Level 2		
12,200.0	7,223.0	12,043.0	7,053.0	144.9	145.2	52.29	337.9	5,143.4	277.9	45.1	232.81	1.194 Level 2		
12,300.0	7,223.0	12,143.0	7,053.0	147.7	148.0	52.29	338.6	5,243.4	277.9	40.6	237.31	1.171 Level 2		
12,400.0	7,223.0	12,243.0	7,053.0	150.5	150.8	52.29	339.4	5,343.4	277.9	36.1	241.80	1.149 Level 2		
12,500.0	7,223.0	12,343.0	7,053.0	153.3	153.6	52.29	340.1	5,443.4	277.9	31.6	246.29	1.128 Level 2		
12,600.0	7,223.0	12,443.0	7,053.0	156.1	156.4	52.28	340.8	5,543.4	277.9	27.1	250.79	1.108 Level 2		
12,700.0	7,223.0	12,543.0	7,053.0	158.8	159.2	52.28	341.6	5,643.4	277.9	22.6	255.28	1.089 Level 2		
12,800.0	7,223.0	12,643.0	7,053.0	161.6	162.0	52.28	342.3	5,743.4	277.9	18.1	259.78	1.070 Level 2		
12,900.0	7,223.0	12,743.0	7,053.0	164.4	164.8	52.28	343.1	5,843.4	277.9	13.6	264.28	1.051 Level 2		
13,000.0	7,223.0	12,843.0	7,053.0	167.2	167.6	52.28	343.8	5,943.4	277.9	9.1	268.78	1.034 Level 2		
13,100.0	7,223.0	12,943.0	7,053.0	170.0	170.3	52.28	344.5	6,043.4	277.9	4.6	273.28	1.017 Level 2		
13,200.0	7,223.0	13,043.0	7,053.0	172.8	173.1	52.28	345.3	6,143.4	277.9	0.1	277.78	1.000 Level 2		
13,300.0	7,223.0	13,143.0	7,053.0	175.6	175.9	52.28	346.0	6,243.4	277.9	-4.4	282.28	0.984 Level 1		
13,400.0	7,223.0	13,243.0	7,053.0	178.4	178.7	52.28	346.7	6,343.4	277.8	-8.9	286.78	0.969 Level 1		
13,500.0	7,223.0	13,343.0	7,053.0	181.2	181.5	52.28	347.5	6,443.4	277.8	-13.4	291.28	0.954 Level 1		
13,600.0	7,223.0	13,443.0	7,053.0	184.0	184.3	52.28	348.2	6,543.4	277.8	-17.9	295.78	0.939 Level 1		
13,700.0	7,223.0	13,543.0	7,053.0	186.8	187.1	52.27	348.9	6,643.4	277.8	-22.4	300.28	0.925 Level 1		

CC - Min centre to center distance or convergent point, SF - min separation factor, ES - min ellipse separation



<b>Company:</b>	Synergy Resources	<b>Local Co-ordinate Reference:</b>	Well SRC Wiedeman 21-5-3CHZ
<b>Project:</b>	Sec.5-T5N-R66W	<b>TVD Reference:</b>	WELL @ 4796.0ft (RKB - 13')
<b>Reference Site:</b>	SRC Wiedeman Pad Sec.5-T5N-R66W	<b>MD Reference:</b>	WELL @ 4796.0ft (RKB - 13')
<b>Site Error:</b>	0.0ft	<b>North Reference:</b>	True
<b>Reference Well:</b>	SRC Wiedeman 21-5-3CHZ	<b>Survey Calculation Method:</b>	Minimum Curvature
<b>Well Error:</b>	0.0ft	<b>Output errors are at</b>	2.00 sigma
<b>Reference Wellbore</b>	Wellbore #1	<b>Database:</b>	Landmark
<b>Reference Design:</b>	Plan #1 (6-24-14)	<b>Offset TVD Reference:</b>	Offset Datum

Offset Design SRC Wiedeman Pad Sec.5-T5N-R66W - SRC Wiedeman A-5-3NHZ - Wellbore #1 - Plan #1 (6-24-14)													Offset Site Error:	0.0 ft
Survey Program: 0-MWD													Offset Well Error:	0.0 ft
Reference		Offset		Semi Major Axis			Distance							Warning
Measured Depth (ft)	Vertical Depth (ft)	Measured Depth (ft)	Vertical Depth (ft)	Reference (ft)	Offset (ft)	Highside Toolface (°)	Offset Wellbore Centre +N/-S (ft)	+E/-W (ft)	Between Centres (ft)	Between Ellipses (ft)	Minimum Separation (ft)	Separation Factor		
13,800.0	7,223.0	13,643.0	7,053.0	189.6	189.9	52.27	349.7	6,743.4	277.8	-27.0	304.78	0.912	Level 1	
13,900.0	7,223.0	13,743.0	7,053.0	192.4	192.7	52.27	350.4	6,843.4	277.8	-31.5	309.29	0.898	Level 1	
14,000.0	7,223.0	13,843.0	7,053.0	195.1	195.5	52.27	351.1	6,943.4	277.8	-36.0	313.79	0.885	Level 1	
14,100.0	7,223.0	13,943.0	7,053.0	197.9	198.3	52.27	351.9	7,043.4	277.8	-40.5	318.29	0.873	Level 1	
14,200.0	7,223.0	14,043.0	7,053.0	200.7	201.1	52.27	352.6	7,143.4	277.8	-45.0	322.80	0.861	Level 1	
14,300.0	7,223.0	14,143.0	7,053.0	203.5	203.9	52.27	353.3	7,243.4	277.8	-49.5	327.30	0.849	Level 1	
14,400.0	7,223.0	14,243.0	7,053.0	206.3	206.7	52.27	354.1	7,343.4	277.8	-54.0	331.81	0.837	Level 1	
14,500.0	7,223.0	14,343.0	7,053.0	209.1	209.5	52.27	354.8	7,443.4	277.8	-58.5	336.31	0.826	Level 1	
14,600.0	7,223.0	14,443.0	7,053.0	211.9	212.3	52.27	355.5	7,543.4	277.8	-63.0	340.82	0.815	Level 1	
14,700.0	7,223.0	14,543.0	7,053.0	214.7	215.1	52.27	356.3	7,643.4	277.8	-67.5	345.32	0.804	Level 1	
14,800.0	7,223.0	14,643.0	7,053.0	217.5	217.9	52.26	357.0	7,743.4	277.8	-72.1	349.83	0.794	Level 1	
14,900.0	7,223.0	14,743.0	7,053.0	220.3	220.7	52.26	357.7	7,843.4	277.8	-76.6	354.34	0.784	Level 1	
15,000.0	7,223.0	14,843.0	7,053.0	223.1	223.5	52.26	358.5	7,943.4	277.8	-81.1	358.84	0.774	Level 1	
15,100.0	7,223.0	14,943.0	7,053.0	225.9	226.3	52.26	359.2	8,043.4	277.8	-85.6	363.35	0.764	Level 1	
15,200.0	7,223.0	15,043.0	7,053.0	228.7	229.1	52.26	360.0	8,143.3	277.7	-90.1	367.86	0.755	Level 1	
15,300.0	7,223.0	15,143.0	7,053.0	231.5	231.9	52.26	360.7	8,243.3	277.7	-94.6	372.36	0.746	Level 1	
15,400.0	7,223.0	15,243.0	7,053.0	234.3	234.7	52.26	361.4	8,343.3	277.7	-99.1	376.87	0.737	Level 1	
15,500.0	7,223.0	15,343.0	7,053.0	237.1	237.5	52.26	362.2	8,443.3	277.7	-103.6	381.38	0.728	Level 1	
15,600.0	7,223.0	15,443.0	7,053.0	239.9	240.3	52.26	362.9	8,543.3	277.7	-108.2	385.88	0.720	Level 1	
15,700.0	7,223.0	15,543.0	7,053.0	242.7	243.1	52.26	363.6	8,643.3	277.7	-112.7	390.39	0.711	Level 1	
15,800.0	7,223.0	15,643.0	7,053.0	245.5	245.9	52.26	364.4	8,743.3	277.7	-117.2	394.90	0.703	Level 1	
15,900.0	7,223.0	15,743.0	7,053.0	248.3	248.7	52.25	365.1	8,843.3	277.7	-121.7	399.41	0.695	Level 1	
16,000.0	7,223.0	15,843.0	7,053.0	251.1	251.5	52.25	365.8	8,943.3	277.7	-126.2	403.92	0.688	Level 1	
16,100.0	7,223.0	15,943.0	7,053.0	253.9	254.3	52.25	366.6	9,043.3	277.7	-130.7	408.42	0.680	Level 1	
16,200.0	7,223.0	16,043.0	7,053.0	256.7	257.1	52.25	367.3	9,143.3	277.7	-135.2	412.93	0.672	Level 1	
16,300.0	7,223.0	16,143.0	7,053.0	259.5	259.9	52.25	368.0	9,243.3	277.7	-139.8	417.44	0.665	Level 1	
16,400.0	7,223.0	16,243.0	7,053.0	262.3	262.7	52.25	368.8	9,343.3	277.7	-144.3	421.95	0.658	Level 1	
16,500.0	7,223.0	16,343.0	7,053.0	265.1	265.5	52.25	369.5	9,443.3	277.7	-148.8	426.46	0.651	Level 1	
16,600.0	7,223.0	16,443.0	7,053.0	267.9	268.3	52.25	370.2	9,543.3	277.7	-153.3	430.97	0.644	Level 1	
16,700.0	7,223.0	16,543.0	7,053.0	270.7	271.1	52.25	371.0	9,643.3	277.7	-157.8	435.48	0.638	Level 1	
16,800.0	7,223.0	16,643.0	7,053.0	273.5	273.9	52.25	371.7	9,743.3	277.7	-162.3	439.99	0.631	Level 1	
16,900.0	7,223.0	16,743.0	7,053.0	276.3	276.7	52.25	372.4	9,843.3	277.7	-166.8	444.49	0.625	Level 1	
17,000.0	7,223.0	16,843.0	7,053.0	279.1	279.5	52.24	373.2	9,943.3	277.6	-171.4	449.00	0.618	Level 1	
17,010.3	7,223.0	16,853.2	7,053.0	279.3	279.8	52.24	373.2	9,953.6	277.6	-171.7	449.38	0.618	Level 1, ES, SF	
17,035.4	7,223.0	16,856.8	7,053.0	279.8	279.9	52.24	373.3	9,957.1	278.5	-171.3	449.83	0.619	Level 1	

<b>Company:</b>	Synergy Resources	<b>Local Co-ordinate Reference:</b>	Well SRC Wiedeman 21-5-3CHZ
<b>Project:</b>	Sec.5-T5N-R66W	<b>TVD Reference:</b>	WELL @ 4796.0ft (RKB - 13')
<b>Reference Site:</b>	SRC Wiedeman Pad Sec.5-T5N-R66W	<b>MD Reference:</b>	WELL @ 4796.0ft (RKB - 13')
<b>Site Error:</b>	0.0ft	<b>North Reference:</b>	True
<b>Reference Well:</b>	SRC Wiedeman 21-5-3CHZ	<b>Survey Calculation Method:</b>	Minimum Curvature
<b>Well Error:</b>	0.0ft	<b>Output errors are at</b>	2.00 sigma
<b>Reference Wellbore</b>	Wellbore #1	<b>Database:</b>	Landmark
<b>Reference Design:</b>	Plan #1 (6-24-14)	<b>Offset TVD Reference:</b>	Offset Datum

Reference Depths are relative to WELL @ 4796.0ft (RKB - 13')  
Offset Depths are relative to Offset Datum  
Central Meridian is -105.500000 °

Coordinates are relative to: SRC Wiedeman 21-5-3CHZ  
Coordinate System is US State Plane 1983, Colorado Northern Zone  
Grid Convergence at Surface is: 0.45°



**Company:** Synergy Resources  
**Project:** Sec.5-T5N-R66W  
**Reference Site:** SRC Wiedeman Pad Sec.5-T5N-R66W  
**Site Error:** 0.0ft  
**Reference Well:** SRC Wiedeman 21-5-3CHZ  
**Well Error:** 0.0ft  
**Reference Wellbore:** Wellbore #1  
**Reference Design:** Plan #1 (6-24-14)

**Local Co-ordinate Reference:** Well SRC Wiedeman 21-5-3CHZ  
**TVD Reference:** WELL @ 4796.0ft (RKB - 13')  
**MD Reference:** WELL @ 4796.0ft (RKB - 13')  
**North Reference:** True  
**Survey Calculation Method:** Minimum Curvature  
**Output errors are at** 2.00 sigma  
**Database:** Landmark  
**Offset TVD Reference:** Offset Datum

Reference Depths are relative to WELL @ 4796.0ft (RKB - 13')

Offset Depths are relative to Offset Datum

Central Meridian is -105.500000 °

Coordinates are relative to: SRC Wiedeman 21-5-3CHZ

Coordinate System is US State Plane 1983, Colorado Northern Zone

Grid Convergence at Surface is: 0.45°

