

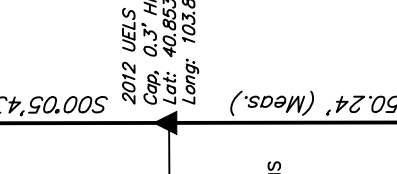
WHITING OIL & GAS CORP.

2012 UELS Alum.  
Cap, 0.3' High  
Lat: 40.860544°  
Long: 103.842372°

---

years

---



2	
---	--

5,43"E

5

Stone  
Lat: 40.846000°  
Long: 103.842342

1

PDOP = 1.7

DECLARATION

0.53 (40.854314)  
1.34 (103.858706)

1.54 (105.055700)  
CATION)

5.58" (40.854328)

DDOD 1 7

CATION)

1.34" (103.858706)

5.58" (40.854328)

1000

ICATION)

5.53" (40.854314)

1.34" (103.858706)

**ICATION)**

5.58" (40.854328)  
0.57" (107.8E9207)

T10N, R58W, 6th P.M.

WHITING OIL & GAS CORP.

2013 UELS Alum. Cap.  
#28285, 0.5' Below Gravel  
Road Surface  
Lat: 40.874989°  
Long: 103.861617°

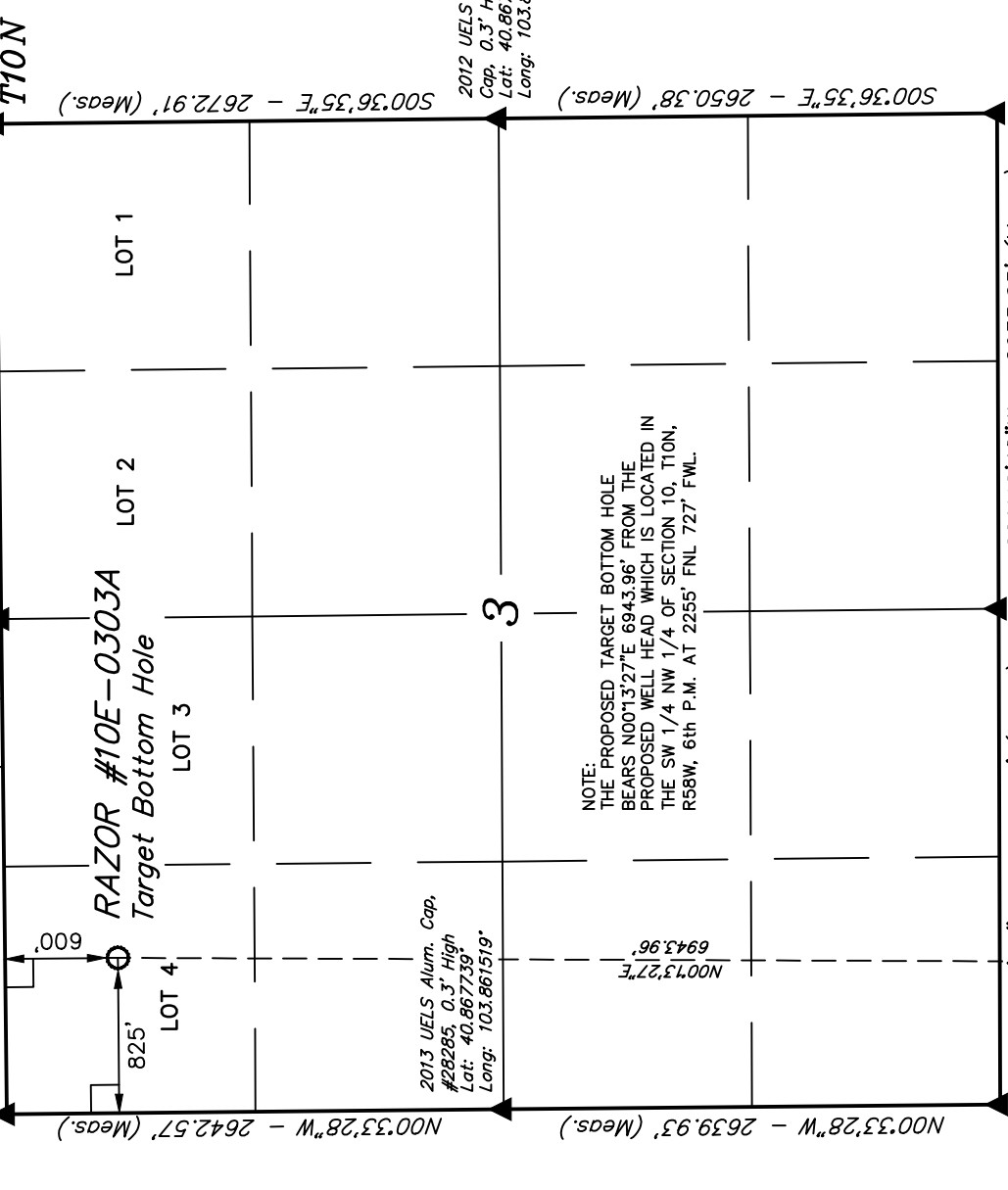
2013 UELS Alum. Cap.  
#28285, Flush with Ground  
Lat: 40.875072°  
Long: 103.852097°

2012 Alum. Cap.  
0.5' High, Pile of  
Stones, PLS 28285  
Lat: 40.875150°  
Long: 103.842578°

N89°22'12"E - 2633.18' (Meas.)

N89°22'12"E - 2633.18' (Meas.)

N89°22'12"E - 2672.91' (Meas.)



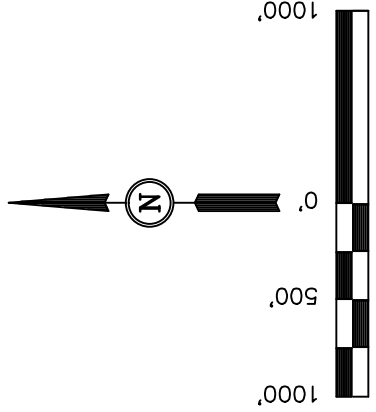
NOTE:  
THE PROPOSED TARGET BOTTOM HOLE  
BEARS N00°13'27"E 6943.96' FROM THE  
PROPOSED WELL HEAD WHICH IS LOCATED IN  
THE SW 1/4 NW 1/4 OF SECTION 10, T10N,  
R58W, 6th P.M. AT 2255' FNL 727' FWL.

BASIS OF ELEVATION

SPOT ELEVATION LOCATED AT THE NORTHEAST CORNER OF SECTION 15, T9N, R58W, 6th P.M. TAKEN FROM THE GATEHOOK SPRING, QUADRANGLE, COLORADO, WELD COUNTY, 7.5 MINUTE QUAD (TOPOGRAPHIC MAP) PUBLISHED BY THE UNITED STATES DEPARTMENT OF THE INTERIOR, GEOLOGICAL SURVEY. SAID ELEVATION IS MARKED AS BEING 4679 FEET.

BASIS OF BEARINGS

BASIS OF BEARINGS IS A G.P.S. OBSERVATION.



CERTIFICATE

THIS IS TO CERTIFY THAT THE ABOVE PLAT WAS PREPARED FROM FIELD NOTES OF ACTUAL SURVEYS MADE BY ME OR UNDER MY SUPERVISION AND THAT THE SAME ARE TRUE AND CORRECT TO THE BEST OF MY KNOWLEDGE AND BELIEF.

REGISTERED LAND SURVEYOR  
REGISTRATION NO. 177492  
STATE OF COLORADO  
08-15-13

REVISED: 08-08-13 H.K.W.  
REVISED: 07-06-13

UNTAH ENGINEERING & LAND SURVEYING			
85 SOUTH 200 EAST - VERNAL, UTAH 84078			
(435) 789-1017			
SCALE	1" = 1000'	DATE SURVEYED:	05-07-13
PARTY	D.N. G.W. J.S.	DATE DRAWN:	05-08-13
WEATHER	WARM	REFERENCES	G.L.O. PLAT
FILE	WHITING OIL & GAS CORP.		

LEGEND:

- 90° SYMBOL
- PROPOSED WELL HEAD.
- SECTION CORNERS LOCATED.

NAD 83 (TARGET BOTTOM HOLE)	
LATITUDE = 40°52'24.13"	(40.873369)
LONGITUDE = 103°51'31.00"	(103.858611)
NAD 27 (TARGET BOTTOM HOLE)	
LATITUDE = 40°52'24.18"	(40.873383)
LONGITUDE = 103°51'29.19"	(103.858108)