

NOBLE ENERGY INC.
MCCARTHY FEDERAL 12-12
SWNW 12-4N-66W
1980' FNL & 555' FWL
Weld County, Colorado
Wattenberg
CURRENT WELLBORE SCHEMATIC
with PROPOSED P&A
7/15/2014

API: 05-123-14990
 COGCC #

GL Elev: 4714'
 KB Elev: 4725'

Spud Date: 4/29/1991

Surface Casing :

8 5/8" 24# @ 344'
 Cement: 280 sx
 TOC: Surface

Remedial Squeeze Cement from 1762' to 2100'

Remedial Squeeze Cement from 2500' to 2885'

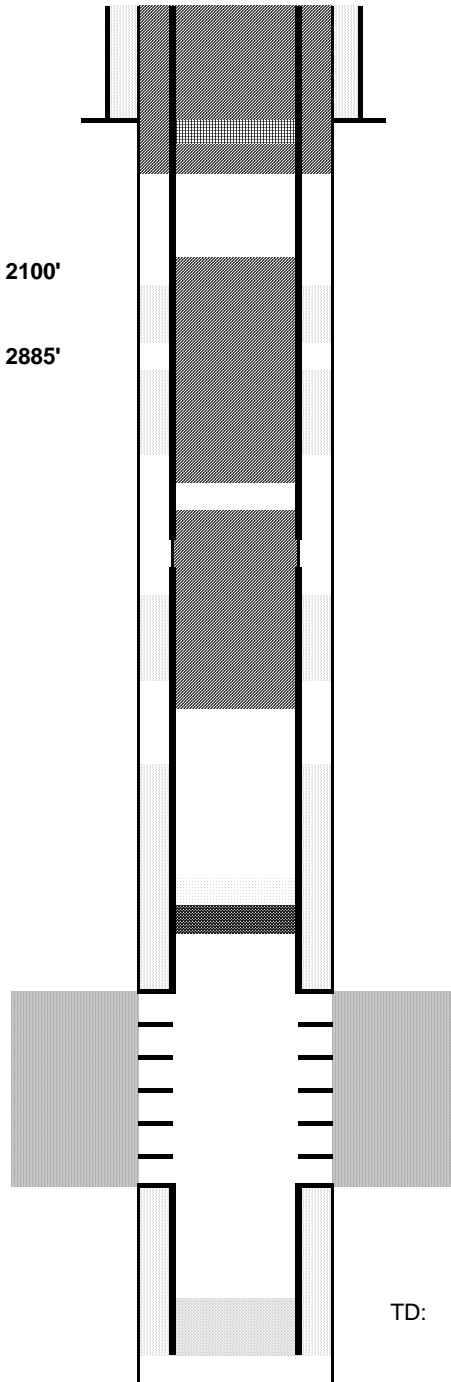
Casing Patch @ 3360'

Stage Cement from 4050' to 4684'

TOC @ 6440'

Production Casing :

4 1/2" 11.6# @ 7315'
 Cement: 240 sx + 310 sx
 TD: 7320



Cut surface casing off 6'-8' below surface.

Pump approx 140 sx through and 30 sx on top
 Will bring cement to surface.

CICR @ 350'
 Perforate csg @ 450'

100 sx Balance Plug @ 3000'

125 sx Balance Plug @ 4800'

CIBP @ 6830' w/ 2 sx cement on top

Niobrara Perforations 6880' - 7008'

Codell Perforations 7192' - 7204'

TD: 7320'