



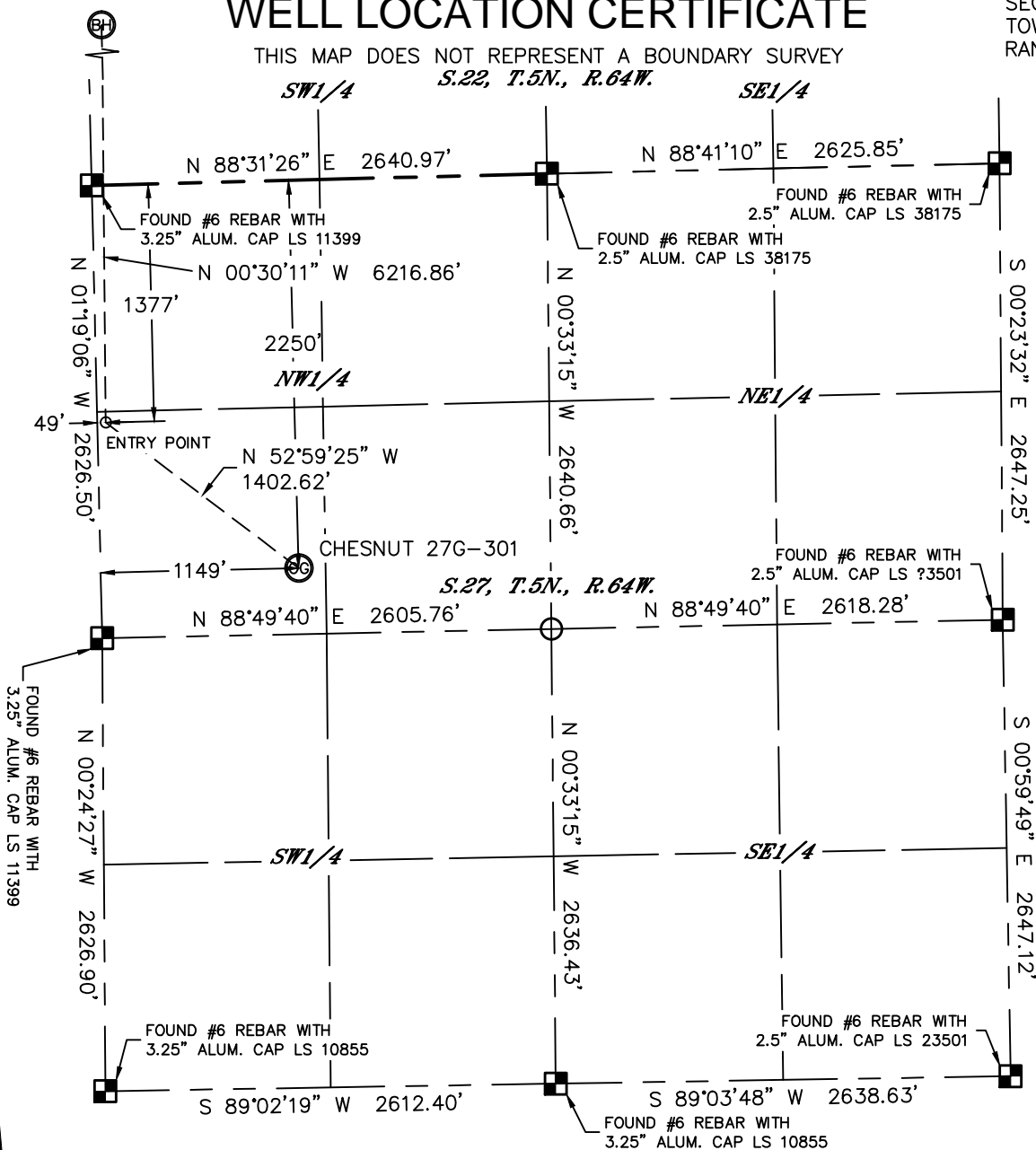
Lat40°, Inc. 1635 Foxtrail Drive, Suite 325 Loveland, CO 970-776-3321

WELL LOCATION CERTIFICATE

SECTION: 27
TOWNSHIP: 5N
RANGE: 64W

THIS MAP DOES NOT REPRESENT A BOUNDARY SURVEY

S.22, T.5N., R.64W.



In accordance with a request from Jeff Dillingham with PDC ENERGY Lat40°, Inc. has determined the surface location of the CHESNUT 27G-301 to be 2250' from the NORTH line and 1149' from the WEST line as measured at right angles from the section lines of Section 27, Township 5 North, Range 64 West and the bottom hole to be 500' from the NORTH line and 130' from the WEST line as measured at right angles from the section lines of Section 22, Township 5 North, Range 64 West of the Sixth Principal Meridian, County of Weld, State of Colorado.

I hereby state that this Well Location Certificate was prepared by me, or under my direct supervision, that the fieldwork was completed on 6/17/2014, for and on behalf of PDC ENERGY. That this is not a Land Survey Plat or an Improvement Survey Plat, and that it is not to be relied upon for establishment of fence, building, or other future improvement lines.

NOTE:

- 1) Bearings shown are Grid Bearings of the Colorado State Plane Coordinate System, North Zone, North American Datum 1983. The lineal dimensions as contained herein are based upon the "U.S. Survey Foot."
- 2) Ground elevations are based on an observed GPS elevation (NAVD 1988 DATUM).
- 3) IMPROVEMENTS: See LOCATION DRAWING for all visible improvements within 500' of disturbed area.
- 4) SURFACE USE: RANGELAND
- 5) INSTRUMENT OPERATOR: BRIAN ROTTINGHAUS
- 6) NEAREST CULTURAL ITEMS:
BUILDING ±905' NW
BUILDING UNIT (VACANT) ±1297' SW
HIGH OCCUPANCY BUILDING UNIT ±5280'
DESIGNATED OUTSIDE ACTIVITY AREA ±5280'
PUBLIC ROAD (CR 55) ±1131' W
ABOVE GROUND UTILITY ±1114' W
RAILROAD ±5036'
PROPERTY LINE ±816' NW

SURFACE LOCATION

LAT: 40.37132°N
LONG: 104.54104°W
PDOP: 1.8
ELEV: 4613'
1/4,1/4: SW1/4NW1/4

ENTRY POINT

LAT: 40.37367°N
LONG: 104.54503°W
1/4,1/4: SW1/4NW1/4

BOTTOM HOLE

LAT: 40.39073°N
LONG: 104.54499°W
1/4,1/4: NW1/4NW1/4

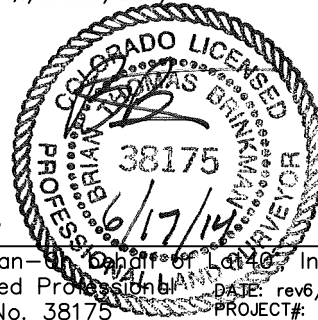
LEGEND

- = ALIQUOT MONUMENT AS DESCRIBED
○ = CALCULATED POSITION

SHEET 1 OF 2

Brian T. Brinkman—Land Surveyor for Lat40°, Inc.

Colorado Licensed Professional Land Surveyor No. 38175
DATE: rev6/17/2014
PROJECT#: 2014004



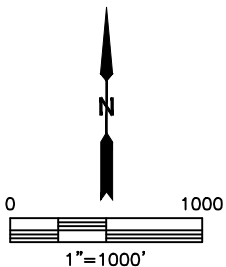
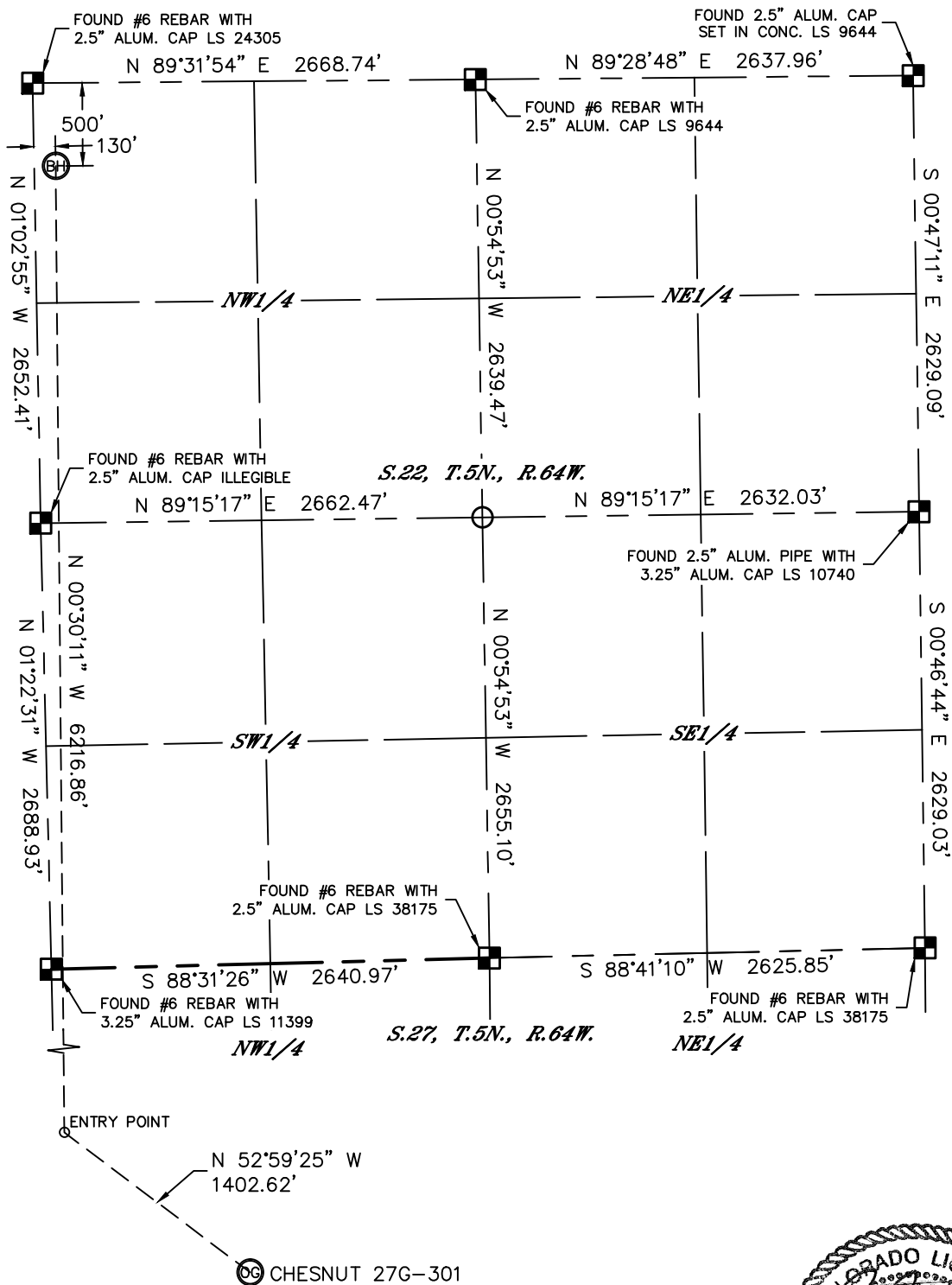


Lat40°, Inc. 1635 Foxtrail Drive, Suite 325 Loveland, CO 970-776-3321

WELL LOCATION CERTIFICATE

THIS MAP DOES NOT REPRESENT A BOUNDARY SURVEY

SECTION: 27
TOWNSHIP: 5N
RANGE: 64W

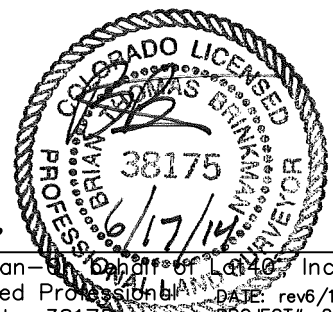


LEGEND

- = ALIQUOT MONUMENT AS DESCRIBED
- = CALCULATED POSITION

SHEET 2 OF 2

Brian T. Brinkman—Owner of Lat40°, Inc.
Colorado Licensed Professional Land Surveyor No. 38175
DATE: rev6/17/2014
PROJECT#: 2014004



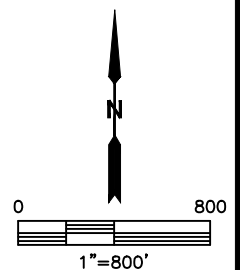
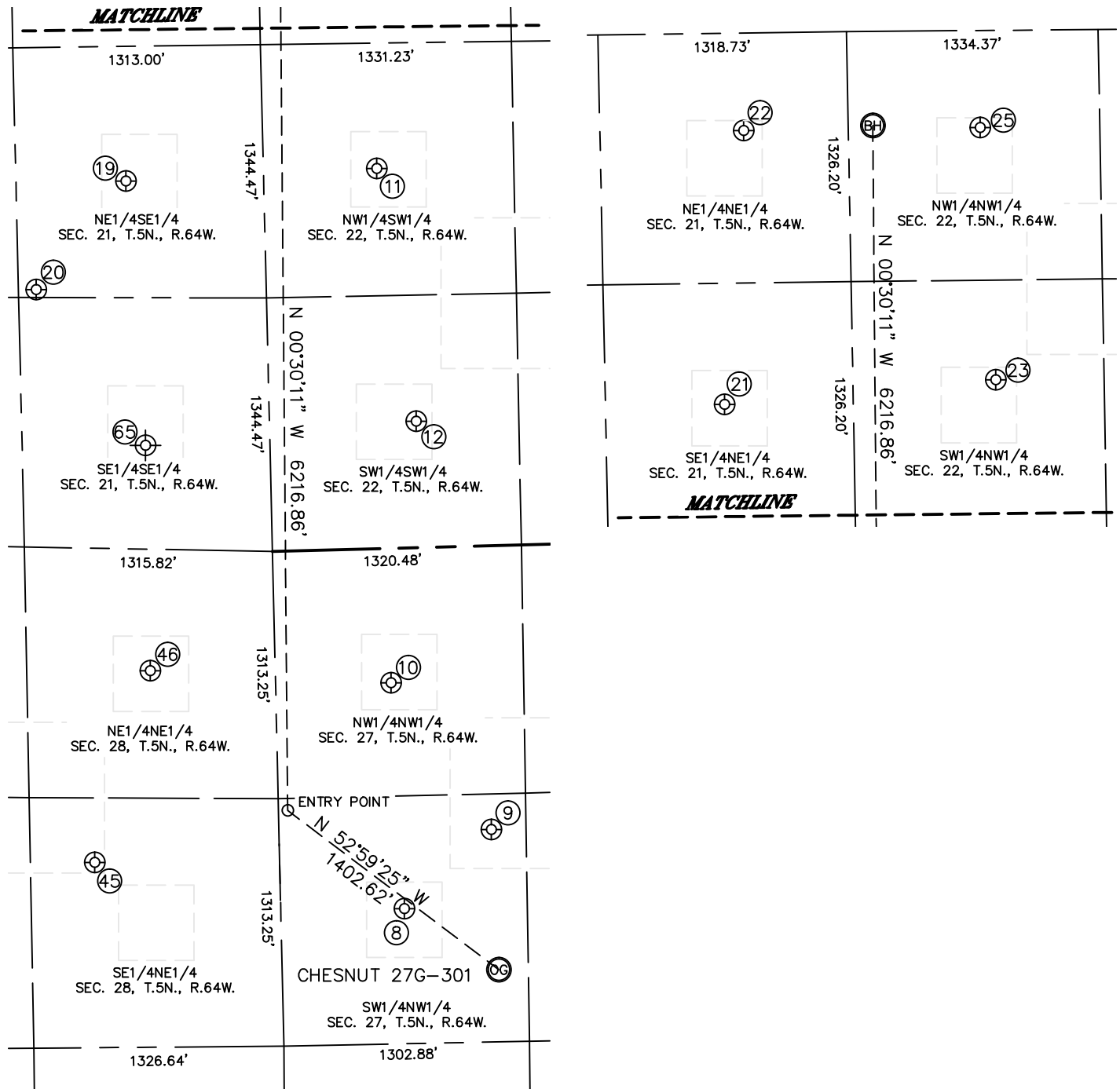


Lat40°, Inc. 1635 Foxtrail Drive, Suite 325 Loveland, CO 970-776-3321

SITE SKETCH

CHESNUT 27G-301

SECTION: 27
TOWNSHIP: 5N
RANGE: 64W





Lat40°, Inc. 1635 Foxtrail Drive, Suite 325 Loveland, CO 970-776-3321

SITE SKETCH

CHESNUT 27G-301

SECTION: 27
TOWNSHIP: 5N
RANGE: 64W

WELL NO.	WELL NAME	SHL FOOTAGE				SHL LAT°	SHL LONG°	PDOP	ELEV (FT.)	1/4/1/4
8	WHITE 27-6	1913	FNL	656	FWL	40.37222	-104.54283	1.8	4613	SWNW
9	WHITE 5	1505	FNL	1127	FWL	40.37336	-104.54116	2.0	4608	SWNW
10	WHITE 27-2	714	FNL	612	FWL	40.37552	-104.54304	1.8	4614	NWNW
11	THOUTT 22-1	2015	FSL	601	FWL	40.38300	-104.54321	2.1	4606	NWSW
12	THOUTT 22-2	670	FSL	778	FWL	40.37932	-104.54251	2.3	4614	SWSW
19	CHESNUT 1	1950	FSL	730	FEL	40.38286	-104.54798	1.4	4621	NESE
20	CHESNUT 5	1366	FSL	1221	FEL	40.38129	-104.54971	1.6	4633	NESE
21	KOHLER 8-21	1969	FNL	683	FEL	40.38670	-104.54786	1.6	4609	SENE
22	KOHLER 1-21	518	FNL	556	FEL	40.39068	-104.54745	1.9	4604	NENE
23	RICE 22-2	1853	FNL	757	FWL	40.38701	-104.54270	1.8	4607	SWNW
25	KALEB 1	515	FNL	699	FWL	40.39069	-104.54294	1.9	4577	NWNW
45	HALL 28-1	1668	FNL	981	FEL	40.37294	-104.54871	1.8	4615	SENE
46	HALL 28-2	645	FNL	662	FEL	40.37573	-104.54762	1.6	4615	NENE
65	CHESNUT 2	550	FSL	660	FEL	40.37899	-104.54772	N/A	4636	SESE

NOTE: THE ABANDONED WELL DATA SHOWN IN RED ABOVE WAS OBTAINED FROM COGCC SCOUT CARDS.