
WILLIAMS PRODUCTION RMT INC EBUSINE

**TW 8-36
GRAND VALLEY
Garfield County , Colorado**

Squeeze Perfs

Post Job Report

The Road to Excellence Starts with Safety

Sold To #: 300721		Ship To #: 2729376		Quote #:		Sales Order #: 6711261	
Customer: WILLIAMS PRODUCTION RMT INC EBUSINE				Customer Rep: Dunnik, Brian			
Well Name: TW			Well #: 8-36			API/UWI #: 05-045-06707	
Field: GRAND VALLEY		City (SAP): PARACHUTE		County/Parish: Garfield		State: Colorado	
Lat: N 39.477 deg. OR N 39 deg. 28 min. 38.708 secs.				Long: W 108.064 deg. OR W -109 deg. 56 min. 8.754 secs.			
Contractor: WORKOVER			Rig/Platform Name/Num: WORKOVER				
Job Purpose: Squeeze Perfs							
Well Type: Development Well			Job Type: Squeeze Perfs				
Sales Person: MARCOTTE, WAYNE			Srvc Supervisor: SCOTT, DALLAS			MBU ID Emp #: 334750	

Job Personnel

HES Emp Name	Exp Hrs	Emp #	HES Emp Name	Exp Hrs	Emp #	HES Emp Name	Exp Hrs	Emp #
CALDWELL, JEFFREY S	4.0	369111	DUBON, TODD N	4.0	443351	LANE, R Michael	4.0	445002
PONDER, THOMAS Lynn	4.0	427112	SCOTT, DALLAS D	4.0	334750			

Equipment

HES Unit #	Distance-1 way	HES Unit #	Distance-1 way	HES Unit #	Distance-1 way	HES Unit #	Distance-1 way
10296152C	60 mile	10897797	60 mile	10951250	60 mile	11021972	60 mile
11027039	60 mile						

Job Hours

Date	On Location Hours	Operating Hours	Date	On Location Hours	Operating Hours	Date	On Location Hours	Operating Hours
06/05/09	4	1.5						

TOTAL	Total is the sum of each column separately							
--------------	--	--	--	--	--	--	--	--

Job

Formation Name	Formation Depth (MD)	Top	Bottom	Form Type	Job depth MD	Job Depth TVD	Water Depth	Perforation Depth (MD)	From	To
				BHST	781. ft	781. ft				
							Wk Ht Above Floor			

Job Times

Date	Time	Time Zone

Well Data

Description	New / Used	Max pressure psig	Size in	ID in	Weight lbm/ft	Thread	Grade	Top MD ft	Bottom MD ft	Top TVD ft	Bottom TVD ft
4 1/2 Production Casing	Unknown		4.5	4.	11.6			.	781.		
2 3/8 Tubing	Unknown		2.375	1.995	4.7			.	663.		

Sales/Rental/3rd Party (HES)

Description	Qty	Qty uom	Depth	Supplier
PORT. DAS W/CEMWIN;ACQUIRE W/HES, ZI	1	JOB		
ADC (AUTO DENSITY CTRL) SYS, /JOB,ZI	1	JOB		

Tools and Accessories

Type	Size	Qty	Make	Depth	Type	Size	Qty	Make	Depth	Type	Size	Qty	Make
Guide Shoe					Packer					Top Plug			
Float Shoe					Bridge Plug					Bottom Plug			
Float Collar					Retainer					SSR plug set			
Insert Float										Plug Container			
Stage Tool										Centralizers			

Miscellaneous Materials

Gelling Agt	Conc	Surfactant	Conc	Acid Type	Qty	Conc	%
Treatment Fld	Conc	Inhibitor	Conc	Sand Type	Size	Qty	

Fluid Data										
Stage/Plug #: 1										
Fluid #	Stage Type	Fluid Name	Qty	Qty uom	Mixing Density lbm/gal	Yield ft ³ /sk	Mix Fluid Gal/sk	Rate bbl/min	Total Mix Fluid Gal/sk	
1	Injection Test		10.00	bbl	.	.0	.0	.0		
2	Tail Cement	SQUEEZECM (TM) SYSTEM (452971)	200.0	sacks	15.8	1.15	5.0		4.95	
4.95 Gal		FRESH WATER								
3	Displacemenet		3.00	bbl	.	.0	.0	.0		
Calculated Values		Pressures		Volumes						
Displacement	3	Shut In: Instant	360	Lost Returns		Cement Slurry	40.96	Pad		
Top Of Cement		5 Min		Cement Returns	No	Actual Displacement	3	Treatment		
Frac Gradient		15 Min		Spacers	10	Load and Breakdown		Total Job		
Rates										
Circulating	rig	Mixing	2.0	Displacement	1.0	Avg. Job	.75			
Cement Left In Pipe	Amount	0 ft	Reason	Shoe Joint						
Frac Ring # 1 @	ID	Frac ring # 2 @	ID	Frac Ring # 3 @	ID	Frac Ring # 4 @	ID			
The Information Stated Herein Is Correct				Customer Representative Signature						

The Road to Excellence Starts with Safety

Sold To #: 300721		Ship To #: 2729376		Quote #:		Sales Order #: 6711261	
Customer: WILLIAMS PRODUCTION RMT INC EBUSINE				Customer Rep: Dunnik, Brian			
Well Name: TW			Well #: 8-36		API/UWI #: 05-045-06707		
Field: GRAND VALLEY		City (SAP): PARACHUTE		County/Parish: Garfield		State: Colorado	
Legal Description:							
Lat: N 39.477 deg. OR N 39 deg. 28 min. 38.708 secs.				Long: W 108.064 deg. OR W -109 deg. 56 min. 8.754 secs.			
Contractor: WORKOVER			Rig/Platform Name/Num: WORKOVER				
Job Purpose: Squeeze Perfs					Ticket Amount:		
Well Type: Development Well			Job Type: Squeeze Perfs				
Sales Person: MARCOTTE, WAYNE			Srv Supervisor: SCOTT, DALLAS			MBU ID Emp #: 334750	

Activity Description	Date/Time	Cht #	Rate bbl/min	Volume bbl		Pressure psig		Comments
				Stage	Total	Tubing	Casing	
Call Out	06/05/2009 08:00							663' 2 3/8" 4.7# Tubing, Retainer @ 663', perfs 776'-781' 4 1/2" 11.6# casing
Depart Yard Safety Meeting	06/05/2009 09:30							Safety meeting including entire HES crew
Circulate Well	06/05/2009 10:00							Rig circulated 60 bbls through perfs, 4 bpm @ 1000 psi; no returns
Arrive At Loc	06/05/2009 11:30							Location in middle of road; Blocked off road spotting equip
Assessment Of Location Safety Meeting	06/05/2009 11:35							Location assessment including entire HES crew
Rig-Up Equipment	06/05/2009 12:00							1 Pump (Elite 9), 1 Bulk (660), 1 Hard line from pump to manifold, 1 hard line from manifold to floor, 1 hard line from manifold to tank, 1 H2O line from pump to tank
Pre-Job Safety Meeting	06/05/2009 12:45							Safety meeting including everyone on location
Start Job	06/05/2009 13:04							Fill lines
Test Lines	06/05/2009 13:08						5000.0	PSI test good; no leaks
Injection Test	06/05/2009 13:11		2	10			750.0	Freshwater, 4x4 @ 100 psi, BP @ 9 psi
ISIP	06/05/2009 13:17						360.0	
Pump Tail Cement	06/05/2009 13:20		2	40.96			575.0	200 sks, 15.8 ppg, 1.15 ft3/sk, 5 gal/sk, BP @ 14 psi; adjusted rate as per co-rep

Sold To # : 300721

Ship To # :2729376

Quote # :

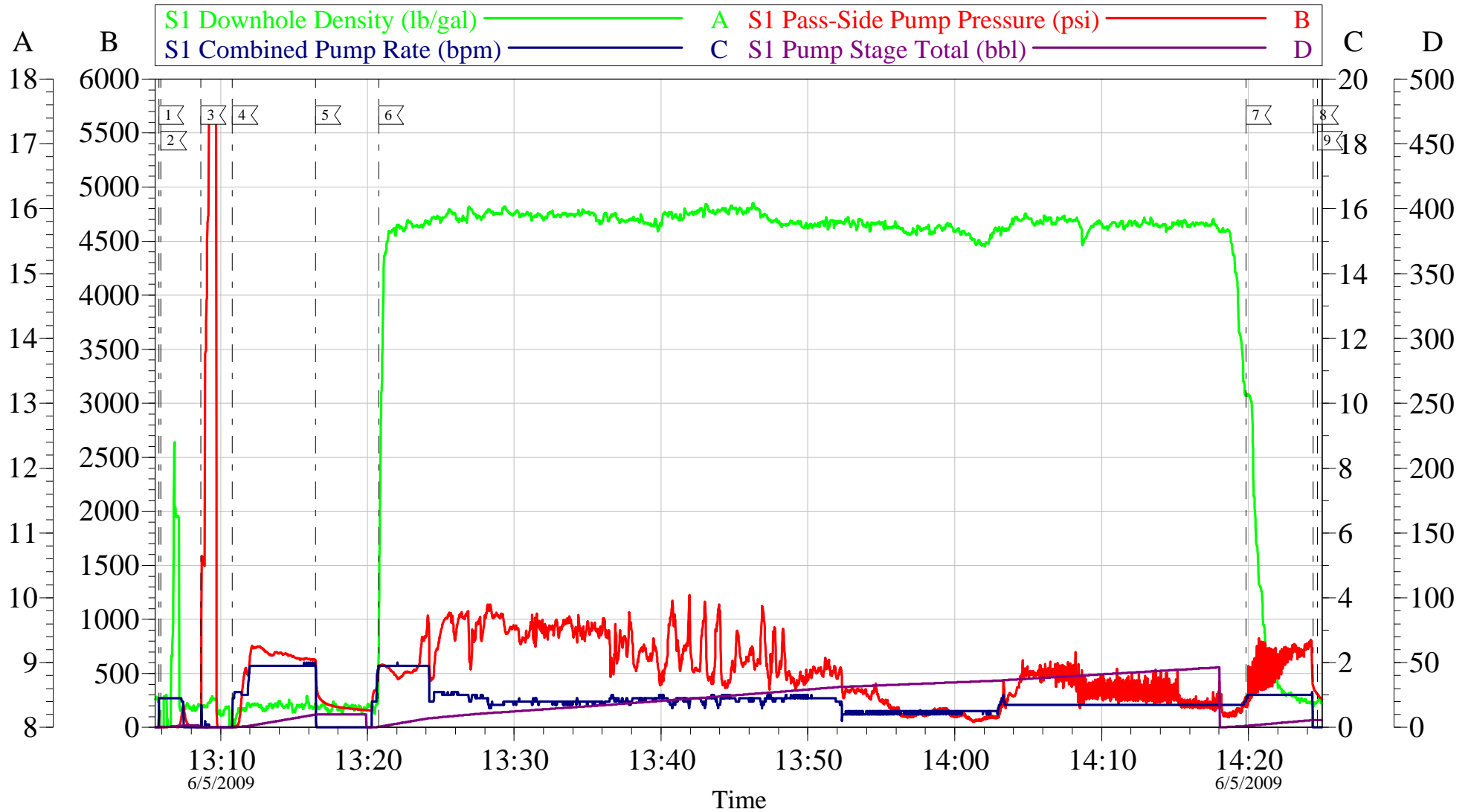
Sales Order # : 6711261

SUMMIT Version: 7.20.130

Friday, June 05, 2009 02:47:00

Activity Description	Date/Time	Cht #	Rate bbl/min	Volume bbl		Pressure psig		Comments
				Stage	Total	Tubing	Casing	
Pump Displacement	06/05/2009 14:18		1	3			700.0	Freshwater displacement
Shutdown	06/05/2009 14:25							
Reverse Circ Well	06/05/2009 14:26							Swapped over to rig to reverse out; rig pressured up and lifted tubing bending joint; verified all HES valves were set correctly to tank; HES pumped through lines to ensure they were clear. Swapped back to rig to reverse out.
End Job	06/05/2009 14:27							
Pre-Rig Down Safety Meeting	06/05/2009 14:30							Safety meeting including entire HES crew
Rig-Down Equipment	06/05/2009 14:45							
Safety Meeting - Departing Location	06/05/2009 15:30							Safety meeting including entire HES crew

WILLIAMS SQUEEZE



Customer: Williams	Job Date: 05-Jun-2009	Sales Order #: 6711261
Well Description: TW 8-36	Job Type: Squeeze	ADC Used: Yes
Company Rep: Brian Dunnik	Cement Supervisor: Dallas Scott	Elite #: Elite 9/Thomas Ponder