

MD 2723 TVD 2714.25
INC 13.1 AZ 6.6
VS 27.42

ROP (ft)
Gamma (API)

2000
160

MD 2817 TVD 2805.71
INC 13.6 AZ 6
VS 30.76

2750

2800

2850

2900

2700'- 2800': SLTST: 55% LTGY
-MEDLTGY, FRI, FN TO MED GRN,
WSRTD, CALC CMT, IMBD PYR,
SANDY, INTGRPOR, NO STN, NO
MIN FLOR, NO O FLOR, NO CUT, NO
RNG

PIERRE (2800' MD - 2900' MD)

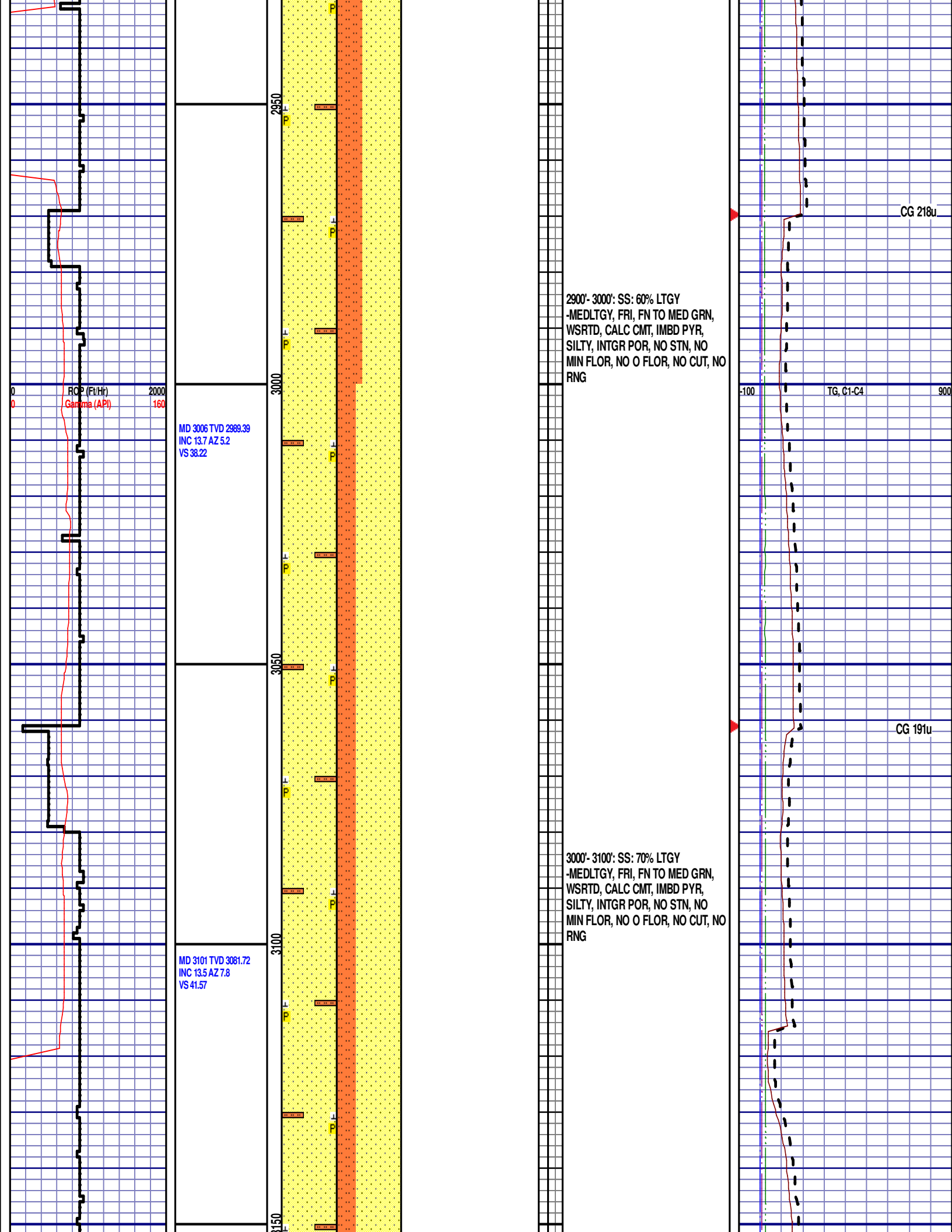


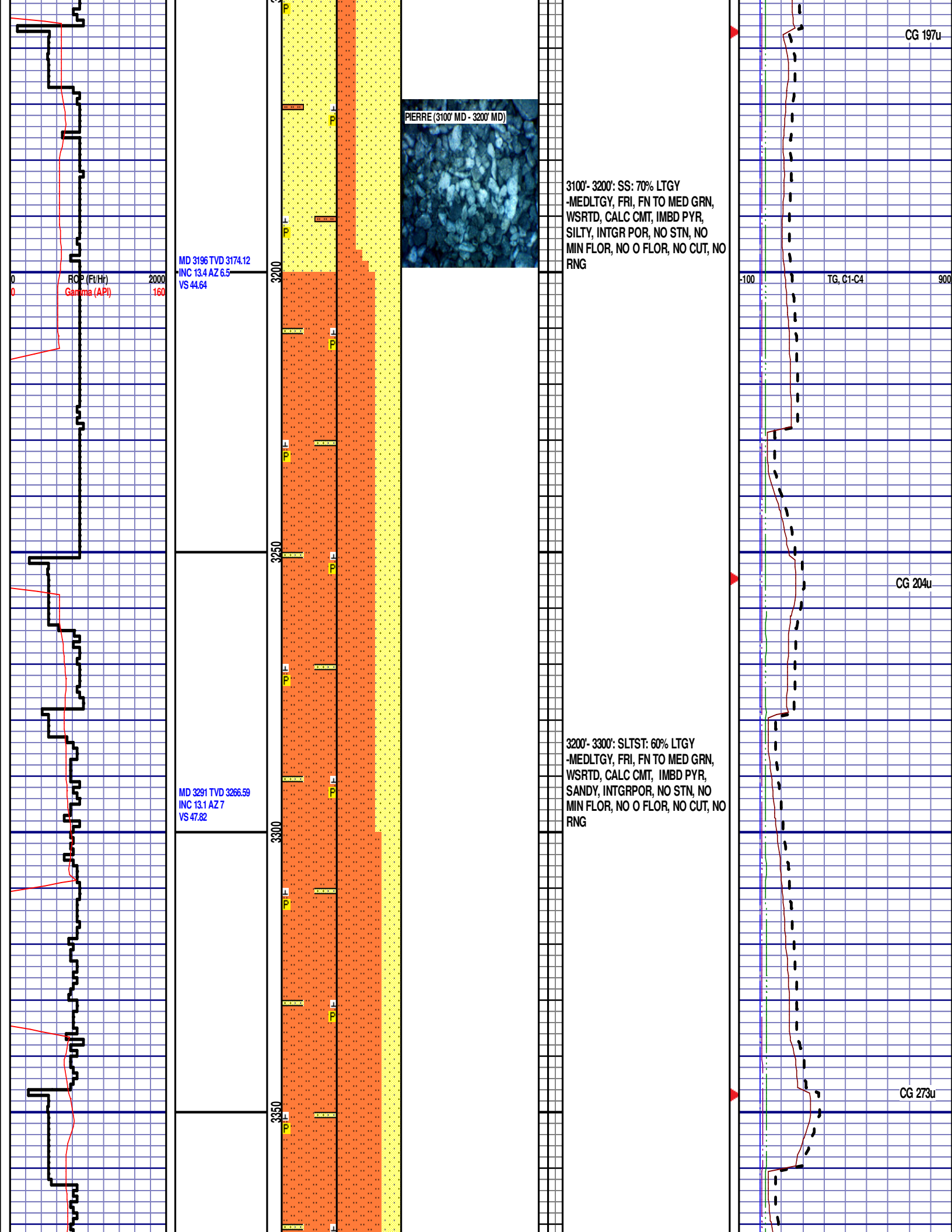
2800'- 2900': SS: 55% LTGY
-MEDLTGY, FRI, FN TO MED GRN,
WSRTD, CALC CMT, IMBD PYR,
SILTY, INTGR POR, NO STN, NO
MIN FLOR, NO O FLOR, NO CUT, NO
RNG

CG 141u

TG, C1-C4

CG 224u





MD 3386 TVD 3359.37
INC 11.7 AZ 6.5
VS 50.79

3300'- 3400': SLTST: 70% LTGY
-MEDLTGY, FRI, FN TO MED GRN,
WSRTD, CALC CMT, IMBD PYR,
SANDY, INTGRPOR, NO STN, NO
MIN FLOR, NO O FLOR, NO CUT, NO
RNG

-100 TG, C1-C4 900

CG 346u

MD 3481 TVD 3452.56
INC 10.7 AZ 5.2
VS 53.76

3400'- 3500': SLTST: 70% LTGY
-MEDLTGY, FRI, FN TO MED GRN,
WSRTD, CALC CMT, IMBD PYR,
SANDY, INTGRPOR, NO STN, NO
MIN FLOR, NO O FLOR, NO CUT, NO
RNG

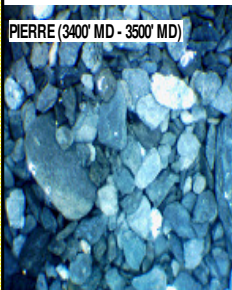
CG 418u

MD 3575 TVD 3544.72
INC 12 AZ 0.6
VS 57.72

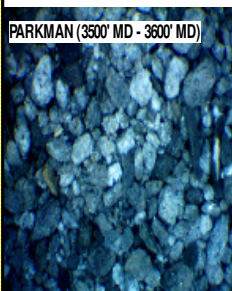
PARKMAN
3552' MD 3522' TVD

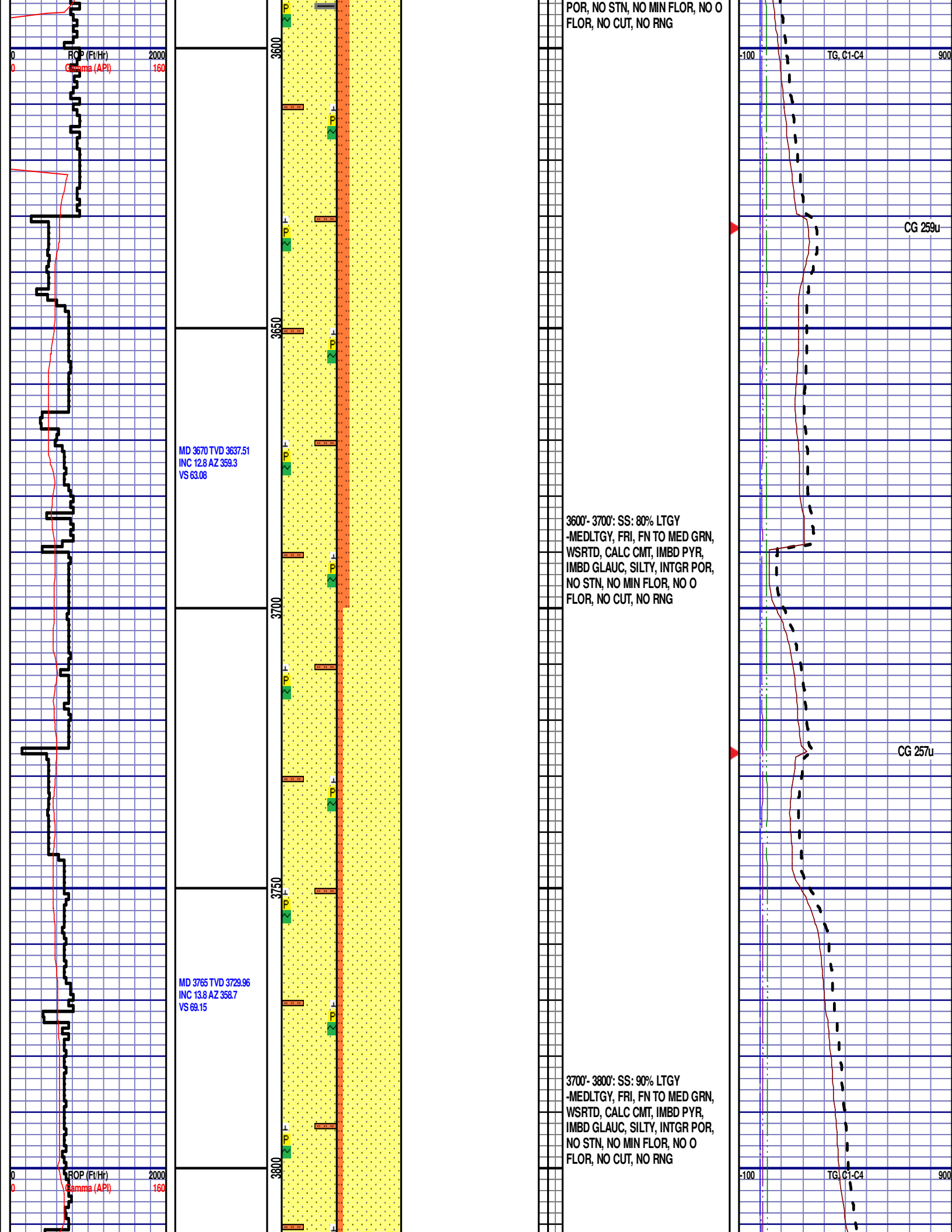
3500'- 3600': SS: 80% LTGY
-MEDLTGY, FRI, FN TO MED GRN,
WSRTD, CALC CMT, IMBD PYR, TR
SH, IMBD GLAUC, SILTY, INTGR

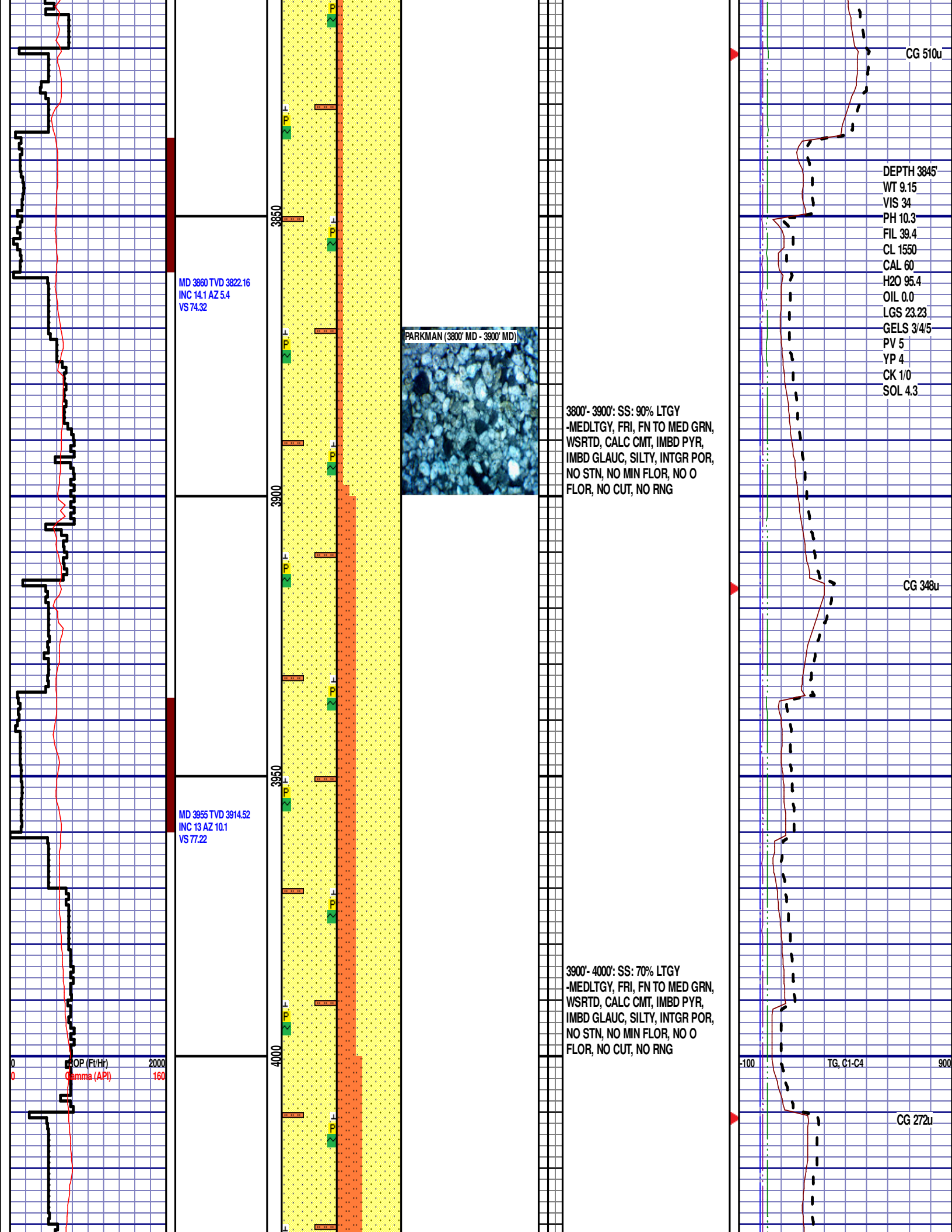
PIERRE (3400' MD - 3500' MD)



PARKMAN (3500' MD - 3600' MD)







MD 4049 TVD 4006.29
INC 12 AZ 9.2
VS 79.16

MD 4144 TVD 4099.3
INC 11.5 AZ 10.6
VS 80.93

MD 4239 TVD 4192.5
INC 10.8 AZ 11.9
VS 82.18

4050

4100

4150

4200

4250

4000'- 4100': SS: 60% LTGY
-MEDLTGY, FRI, FN TO MED GRN,
WSRTD, CALC CMT, IMBD PYR,
IMBD GLAUC, SILTY, INTGR POR,
NO STN, NO MIN FLOR, NO O
FLOR, NO CUT, NO RNG

SUSSEX (4100' MD - 4200' MD)



SUSSEX

4114' MD 4070' TVD

4100'- 4200': SLTST: 55% LTGY
-MEDLTGY, FRI, FN TO MED GRN,
WSRTD, CALC CMT, IMBD PYR,
IMBD GLAUC, SANDY, INTGRPOR,
NO STN, NO MIN FLOR, NO O
FLOR, NO CUT, NO RNG

CG 278u

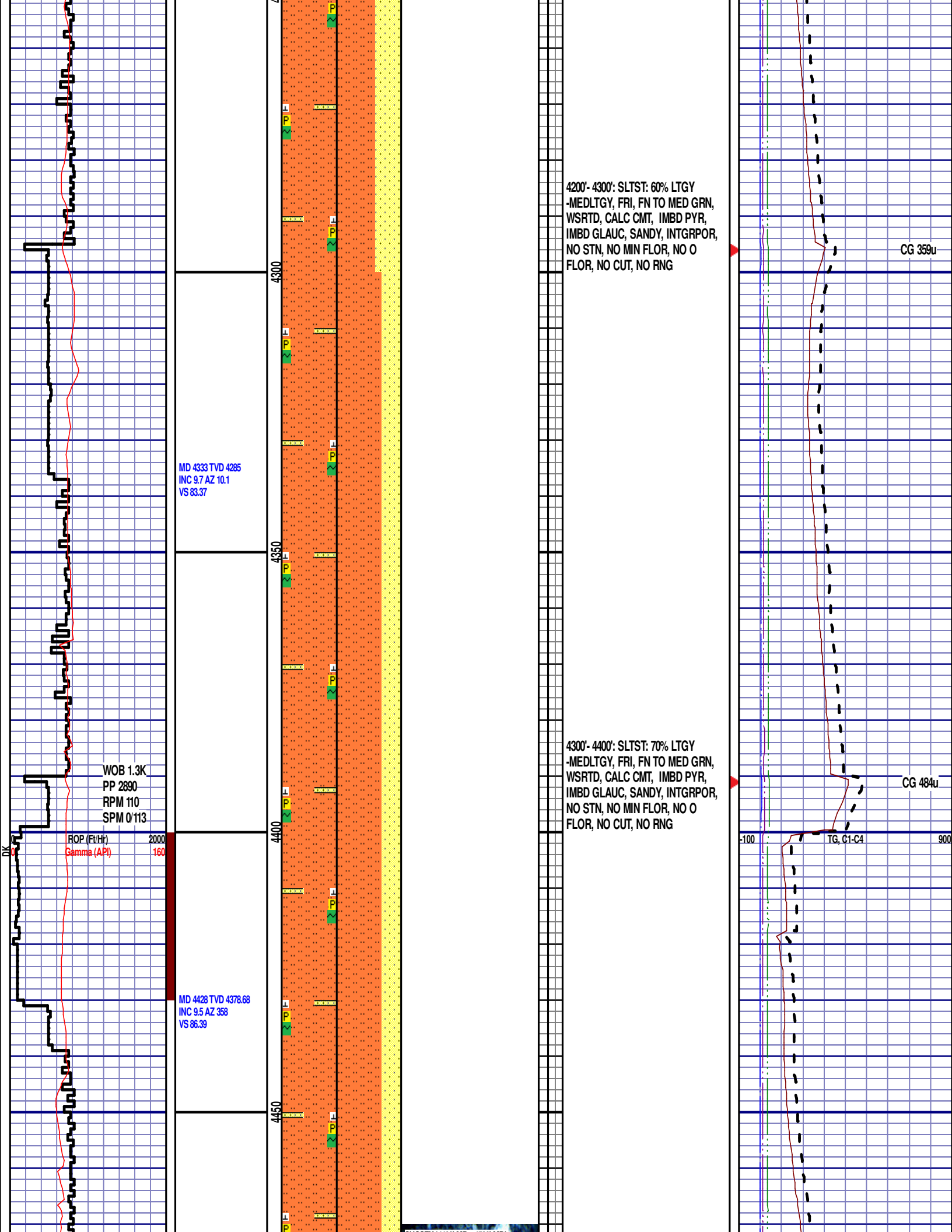
CG 380u

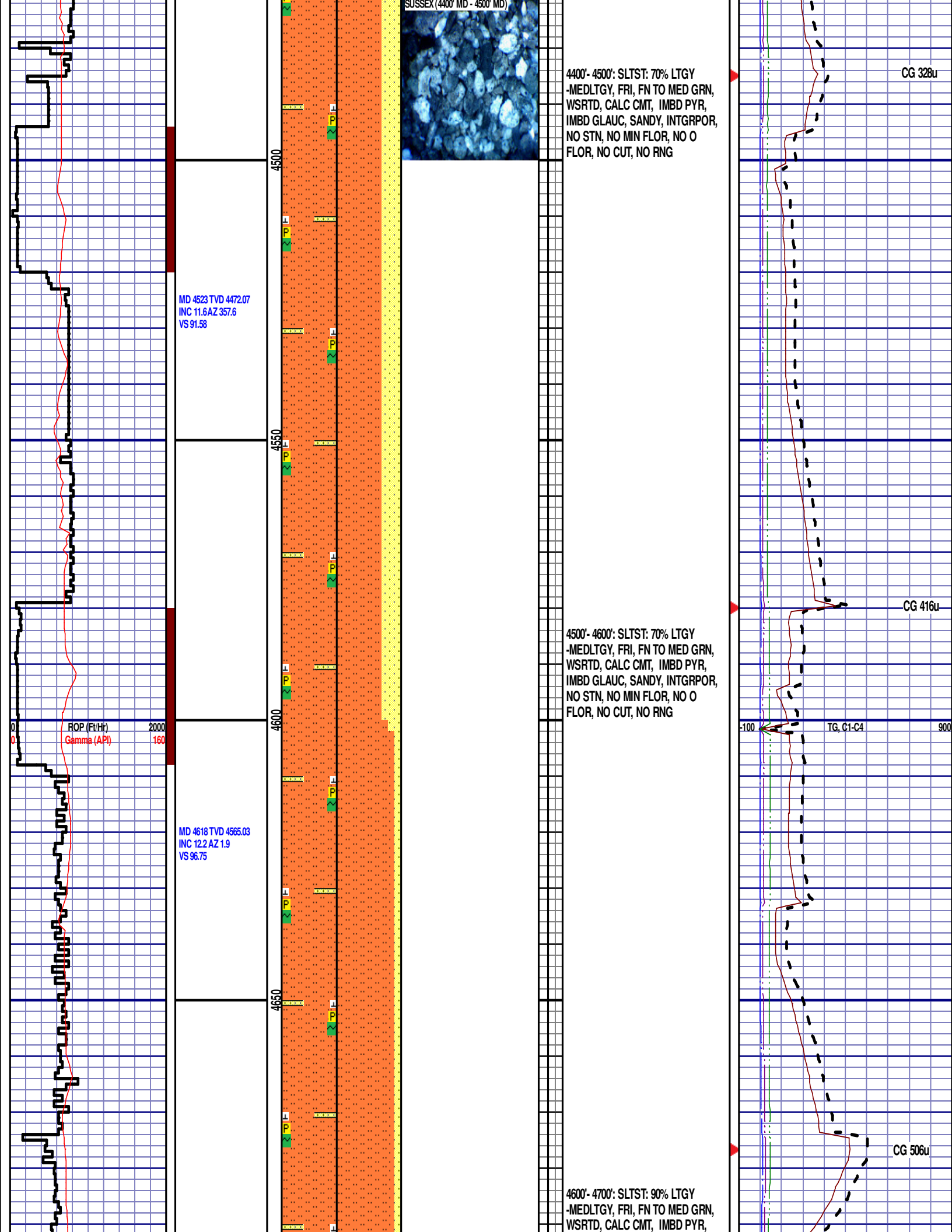
ROP (Ft/Hr)
Gamma (API)

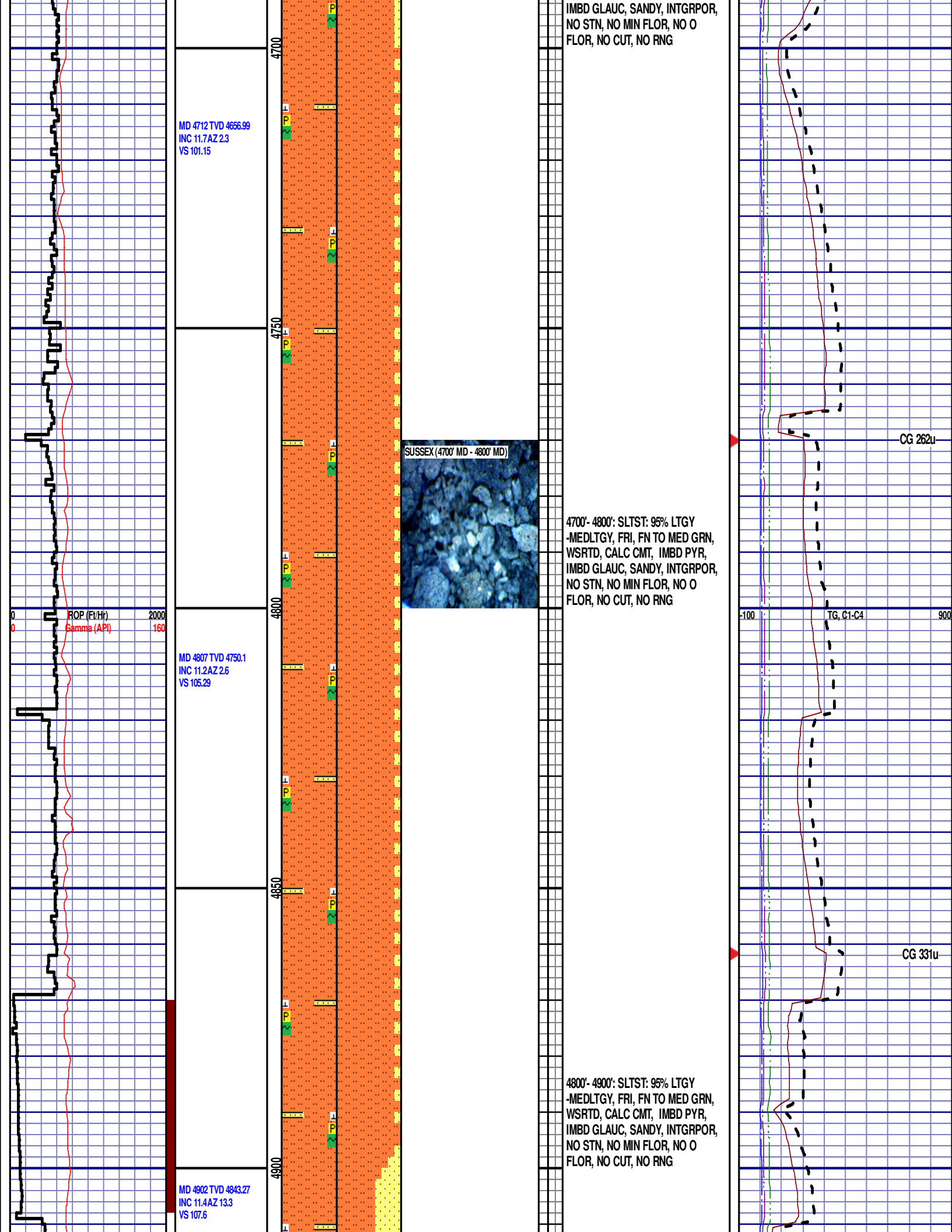
2000
160

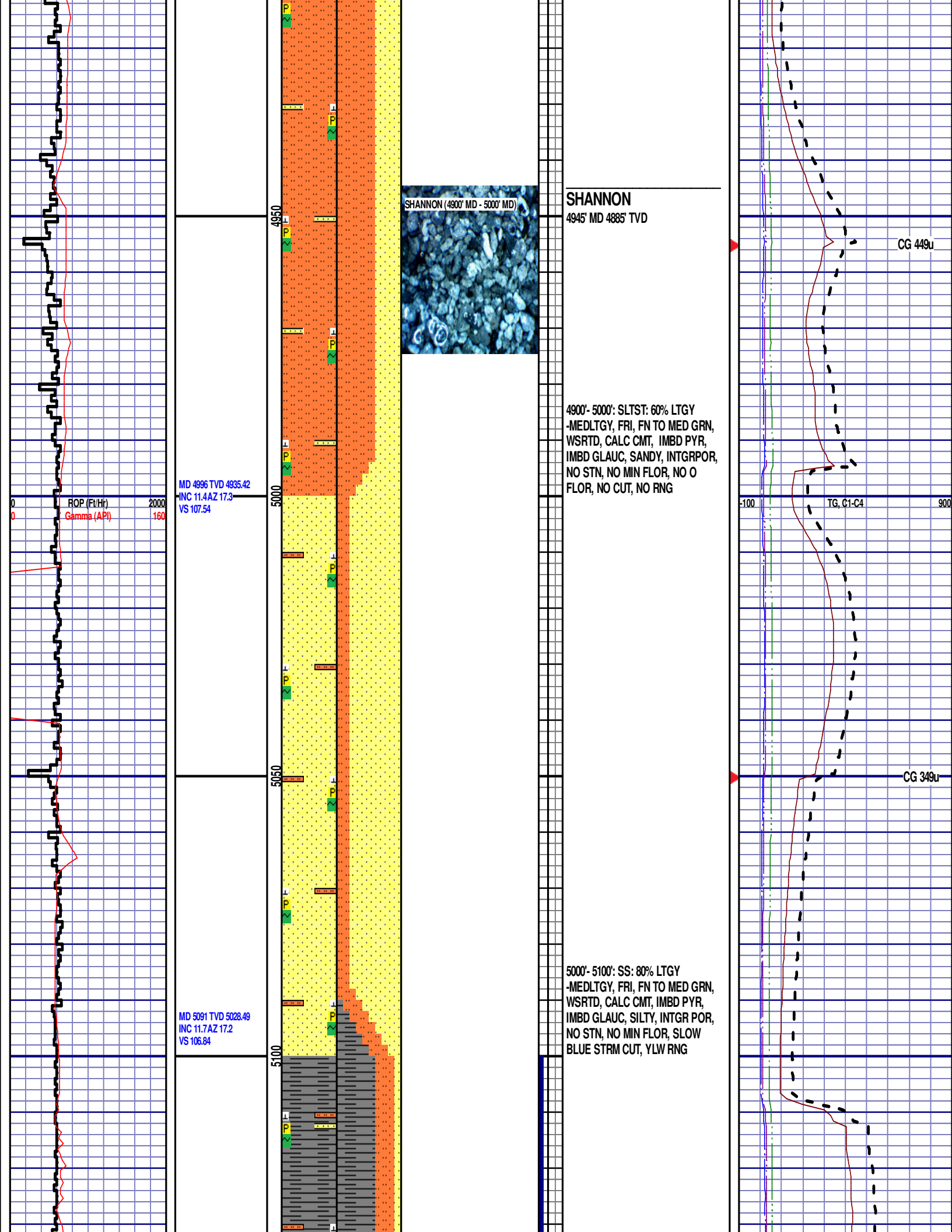
TG, C1-C4

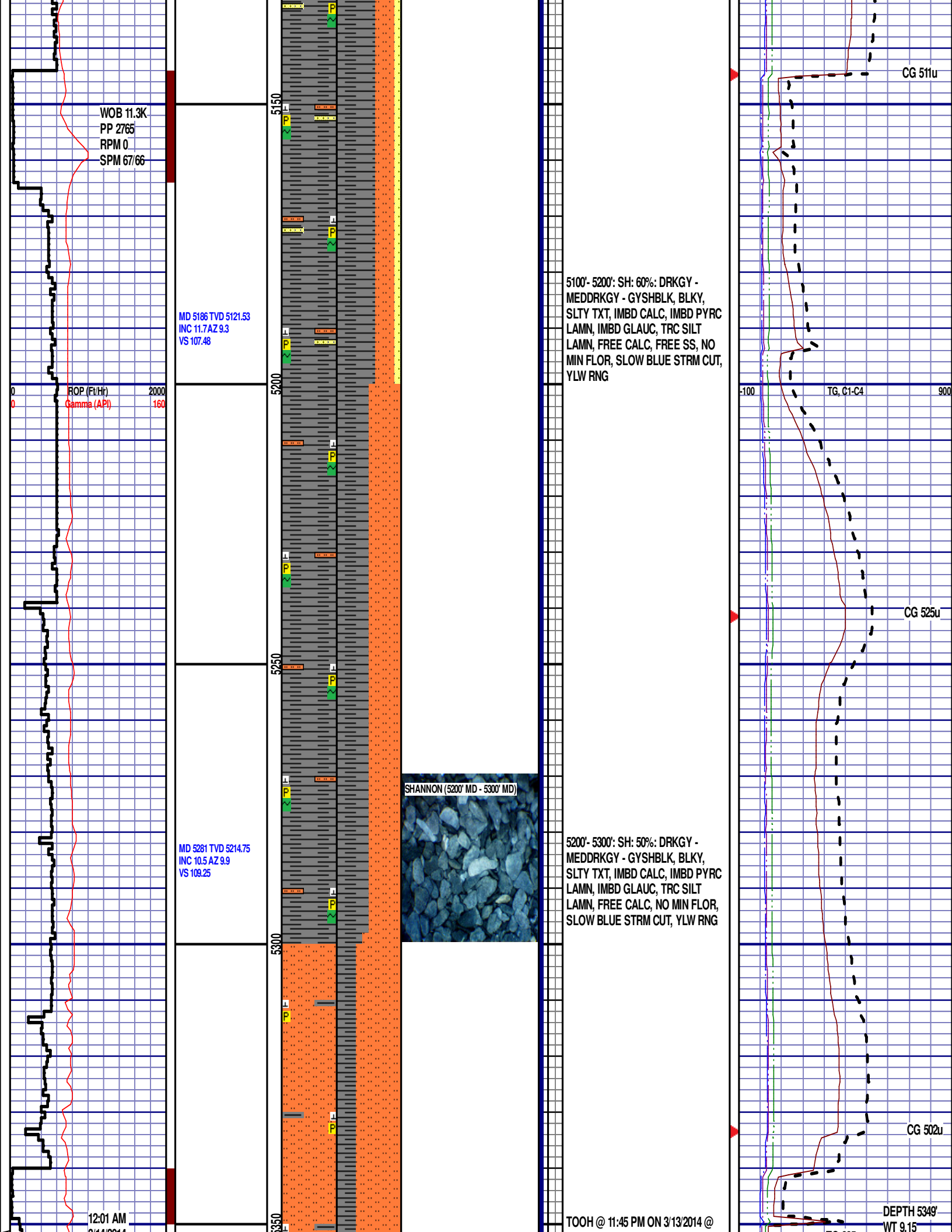
900











3/14/2014
FT/24 HRS 4386
DAY 03

MD 5373 TVD 5305.31
INC 9.8 AZ 8
VS 110.99

ROP (Ft/Hr) 2000
Gamma (API) 160

MD 5468 TVD 5398.79
INC 10.7 AZ 1.5
VS 114.07

MD 5563 TVD 5492.05
INC 11.3 AZ 353.9
VS 119.52

5349' MD DUE TO MUD MOTOR
MALFUNCTION. TIH @ 6:00 AM ON
3/14/2014. RESUMED DRILLING @
9:35 AM ON 3/14/2014 @ 5349' MD W/
BIT #3, 8.75", SMITH/MDI513, (S/N)
JH7451, IN @ 5349' MD.

5300'- 5400': SLTST: 70% LTGY
-MEDLTGY, FRI, FN TO MED GRN,
WSRTD, CALC CMT, IMBD PYR, TR
SH, INTG POR, NO STN, NO MIN
FLOR, SLOW BLUE STRM CUT, YLW
RNG

5400'- 5500': SLTST: 60% LTGY
-MEDLTGY, FRI, FN TO MED GRN,
WSRTD, CALC CMT, IMBD PYR, TR
SH, INTG POR, NO STN, NO MIN
FLOR, SLOW BLUE STRM CUT, YLW
RNG

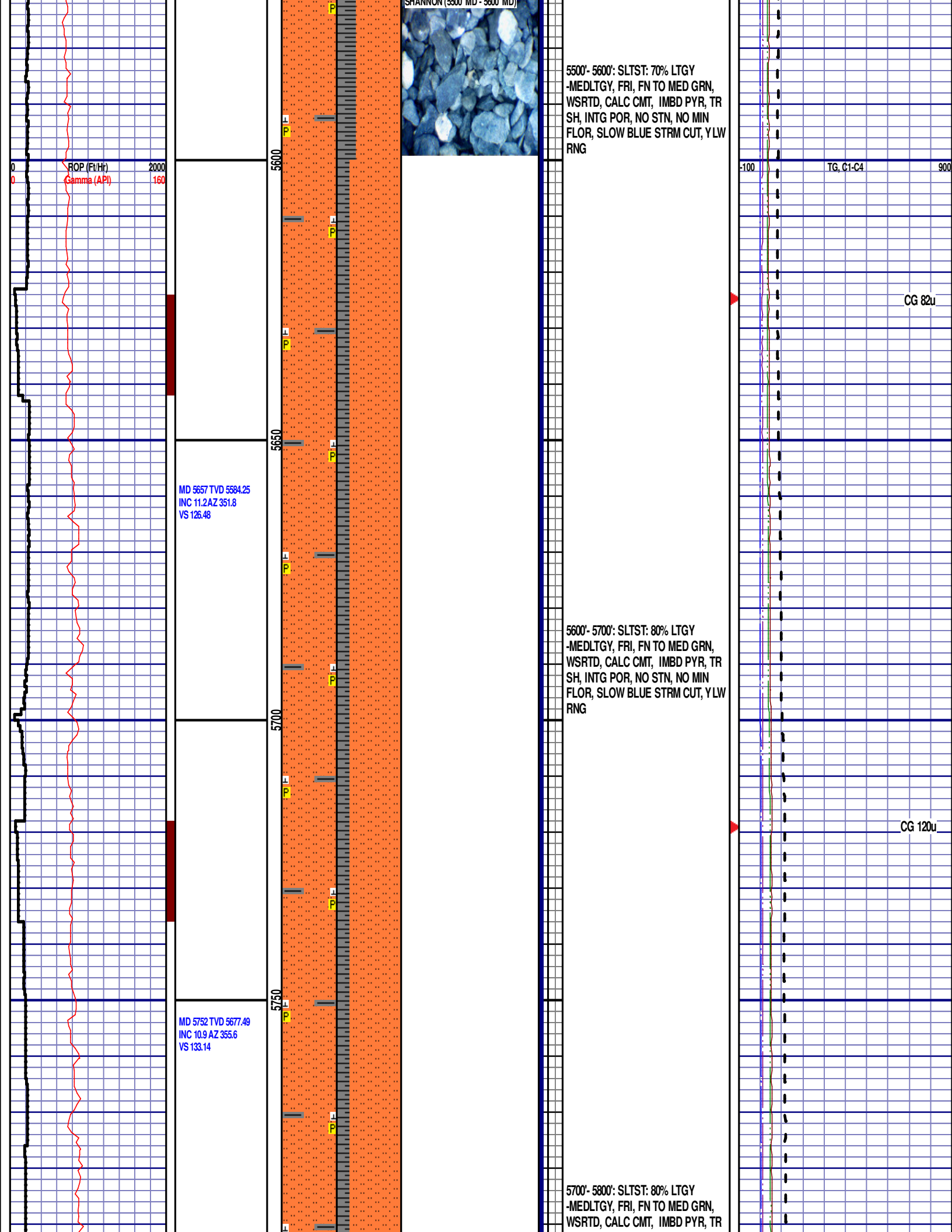
TG 385u

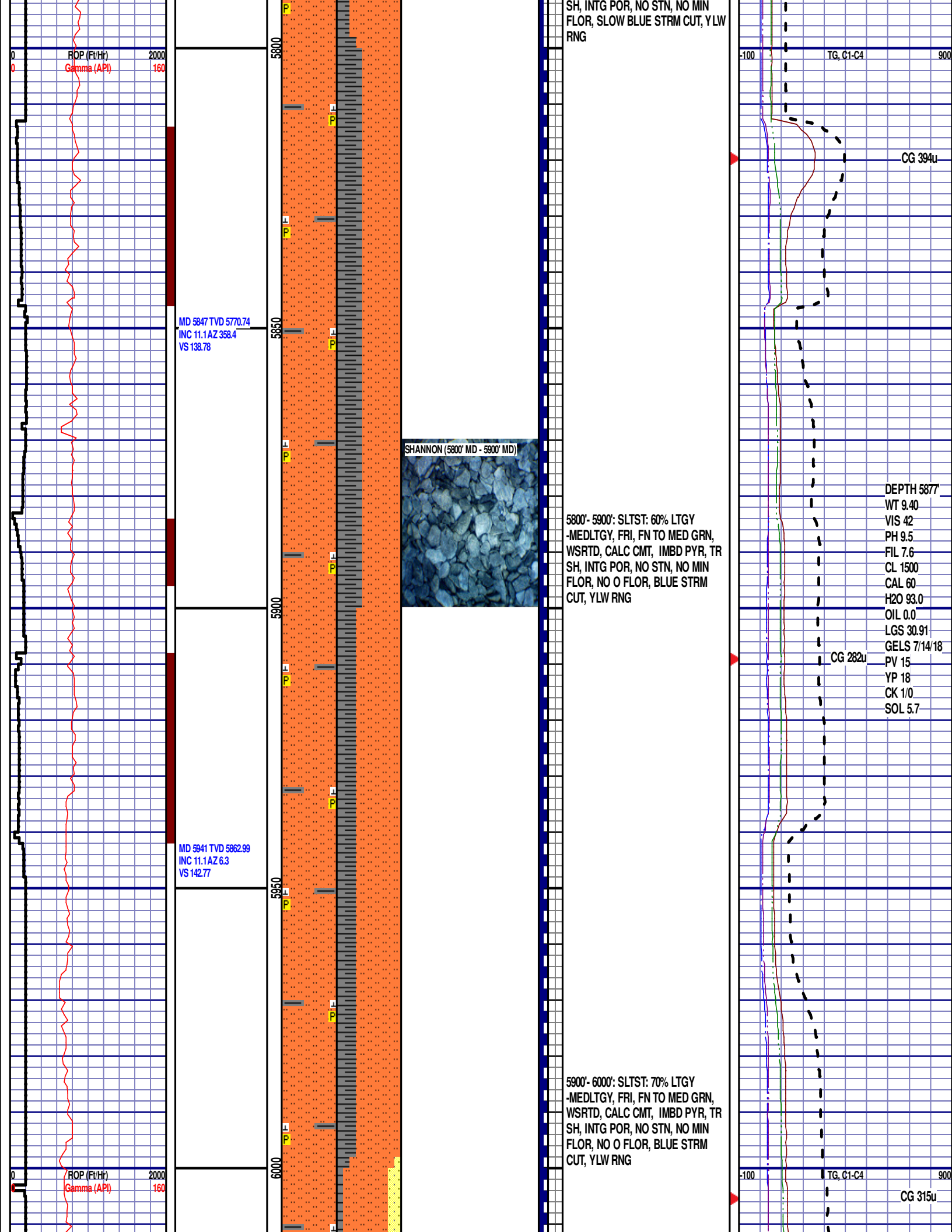
VIS 46
PH 8.7
FIL 7.8
CL 1600
CAL 60
H2O 95.0
OIL 0.0
LGS 20.98
GELS 6/12/16
PV 13
YP 19
CK 2/0
SOL 4.2

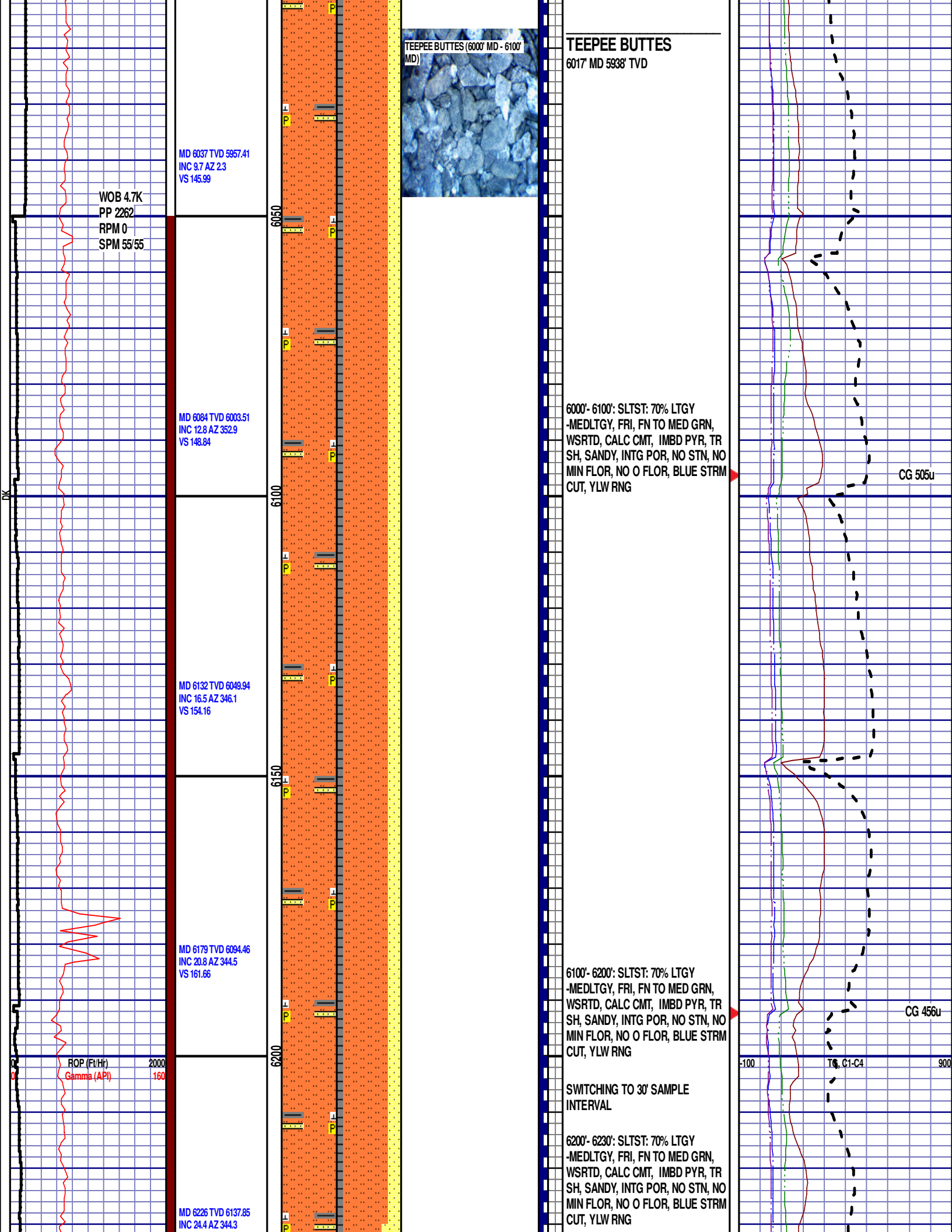
TG, C1-C4

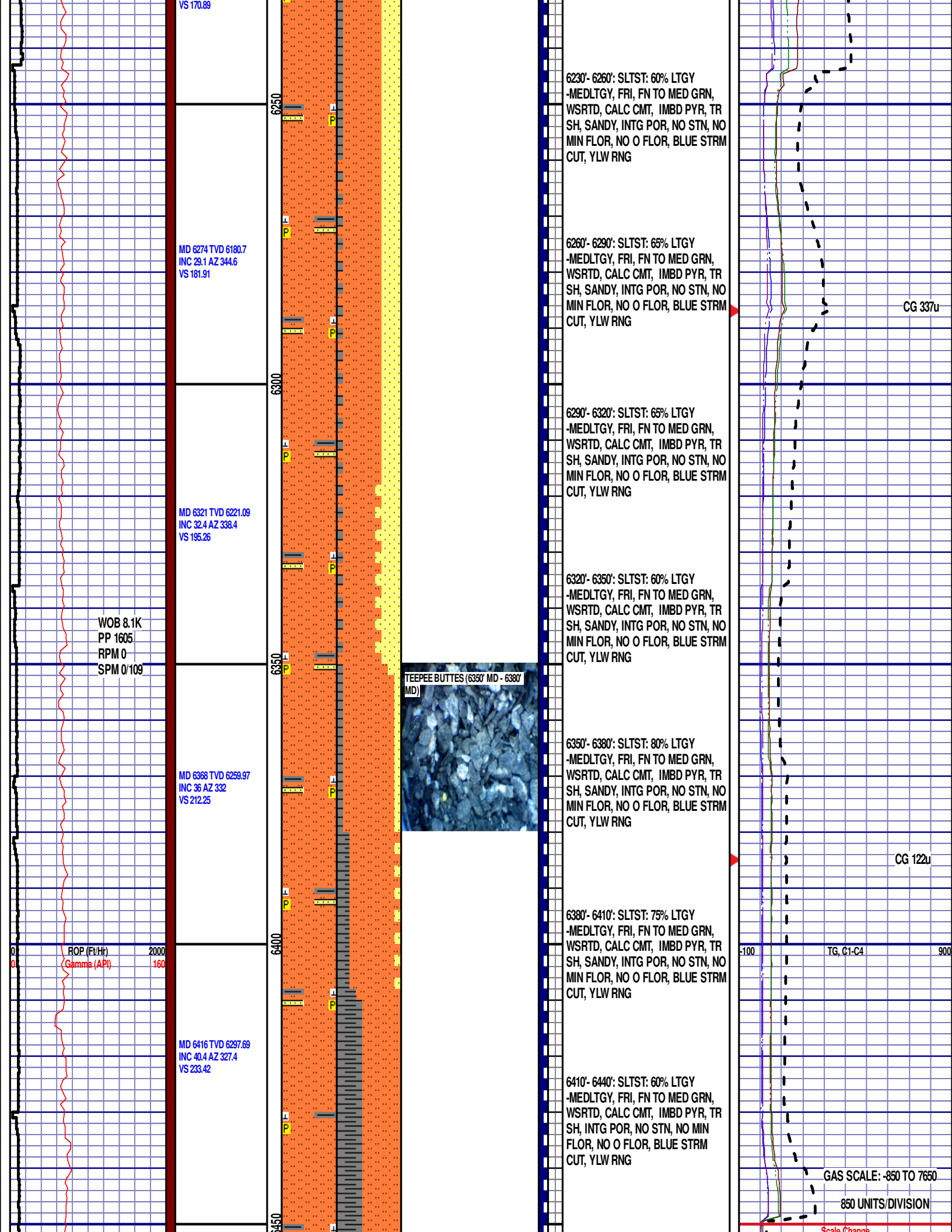
CG 65u

CG 105u









MD 6463 TVD 6332.18
INC 45.2 AZ 322.3
VS 258.01

MD 6510 TVD 6363.27
INC 51 AZ 318.7
VS 286.77

12:01 AM
3/15/2014
FT/24 HRS
1176
DAY 04

WOB 25.9K
PP 3676
RPM 0
SPM 67/66

MD 6558 TVD 6392.75
INC 53.2 AZ 316.2
VS 318.78

ROP (Ft/H)
Gamma (API)

2000
160

MD 6605 TVD 6420.32
INC 55 AZ 313.1
VS 351.91

WOB 12.5K
PP 3674
RPM 25
SPM 66/66

MD 6653 TVD 6446.81
INC 58 AZ 309.7
VS 387.81

6440'- 6470': SLTST: 60% LTGY
-MEDLTGY, FRI, FN TO MED GRN,
WSRTD, CALC CMT, IMBD PYR, TR
SH, INTG POR, NO STN, NO MIN
FLOR, NO O FLOR, BLUE STRM
CUT, YLW RNG

6470'- 6500': SH: 60%: DRKGY -
MEDDRKGY - GYSHBLK, BLKY,
SLTY TXT, IMBD CALC, IMBD PYRC
LAMN, SILTY, NO MIN FLOR, BLUE
STRM CUT, YLW RING

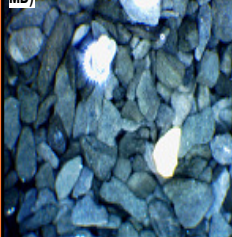
6500'- 6530': SH: 50%: DRKGY -
MEDDRKGY - GYSHBLK, BLKY,
SLTY TXT, IMBD CALC, IMBD PYRC
LAMN, SILTY, NO MIN FLOR, BLUE
STRM CUT, YLW RING

6530'- 6560': SH: 50%: DRKGY -
MEDDRKGY - GYSHBLK, BLKY,
SLTY TXT, IMBD CALC, IMBD PYRC
LAMN, SILTY, NO MIN FLOR, BLUE
STRM CUT, YLW RING

6560'- 6590': SH: 50%: DRKGY -
MEDDRKGY - GYSHBLK, BLKY,
SLTY TXT, IMBD CALC, IMBD PYRC
LAMN, SILTY, NO MIN FLOR, BLUE
STRM CUT, YLW RING

6590'- 6620': SH: 70%: DRKGY -
MEDDRKGY - GYSHBLK, BLKY,
SLTY TXT, IMBD CALC, IMBD PYRC
LAMN, SILTY, FREE BENT, NO MIN
FLOR, BLUE STRM CUT, YLW RING

SHARON SPRINGS (6620' MD - 6650'
MD)



SHARON SPRINGS

6632' MD 6435' TVD

6620'- 6650': SH: 70%: DRKGY -
MEDDRKGY - GYSHBLK, BLKY,
SLTY TXT, IMBD CALC, IMBD PYRC
LAMN, SILTY, FREE BENT, NO MIN
FLOR, BLUE STRM CUT, YLW RING

6650'- 6680': SH: 60%: DRKGY -
MEDDRKGY - GYSHBLK, BLKY,
SLTY TXT, IMBD CALC, IMBD PYRC

TG, C1-C4

CG 544u

CG 758u

TG, C1-C4

CG 758u

CG 2046u

