

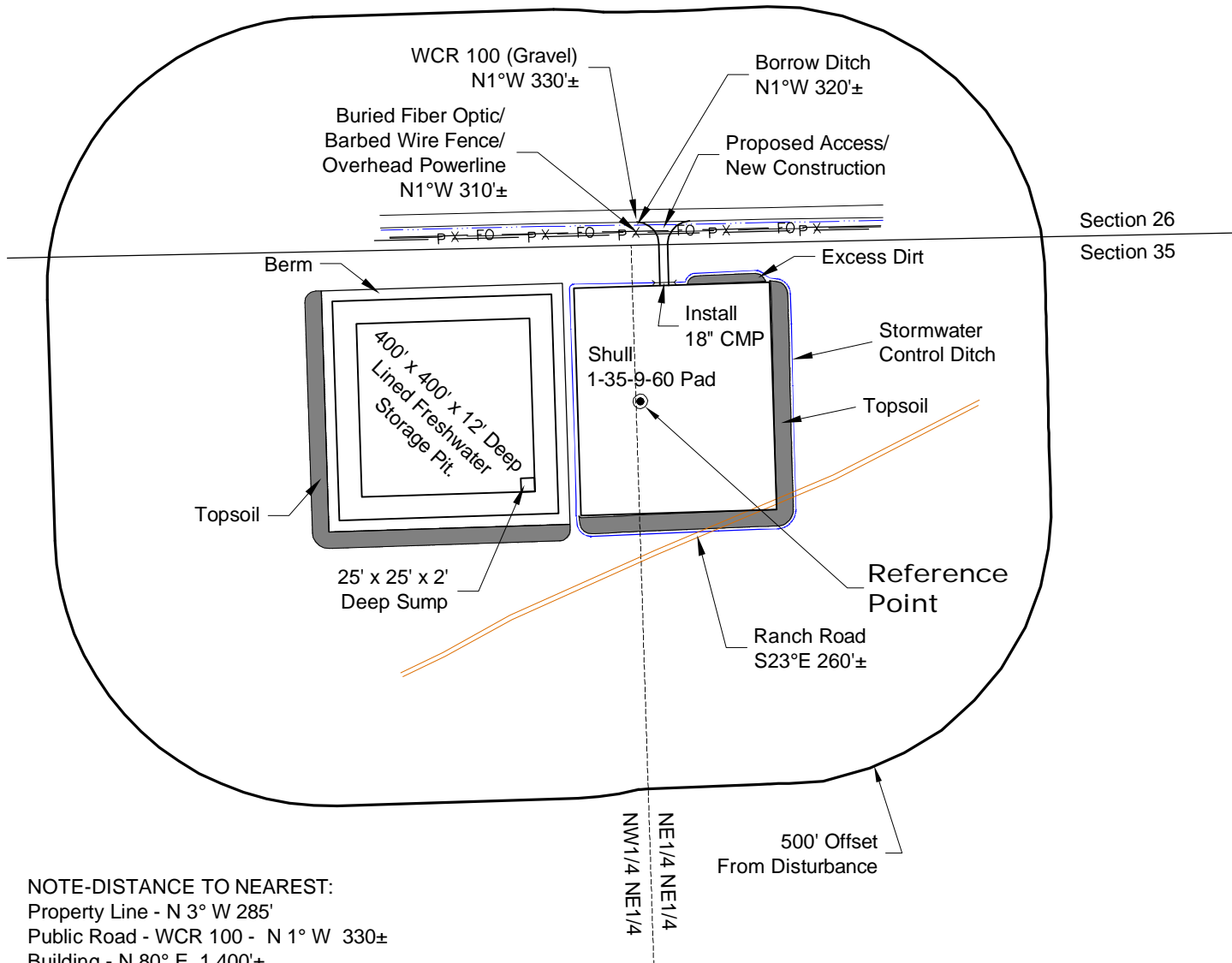
LOCATION DRAWING

VEGETATION:
GRASSLAND PASTURE

SURFACE USE:
GRAZING

REFERENCE POINT

LATITUDE: 40.71314
LONGITUDE: -104.05430
FOOTAGE: 285 FNL 1319 FEL
GROUND ELEVATION: 4923.9
PDOP: 1.7 DATE: 3/1/13
INSTRUMENT OPERATOR: MARC WOODARD



NOTE-DISTANCE TO NEAREST:

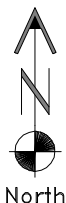
Property Line - N 3° W 285'
Public Road - WCR 100 - N 1° W 330±
Building - N 80° E 1,400±
Railroad - UPRR S 5° E 32 Miles±
Powerline - N 1° W 310±

DISTURBANCE ACREAGE:
DRILLING PAD 4.6±
FRESHWATER STORAGE PIT 6.0±

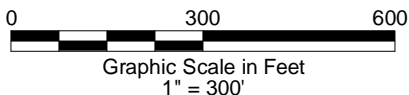
NOTE:

ALL PRODUCTION FACILITIES WILL BE ON PAD.

7/9/14



North



LAND SURVEYING AND MAPPING
LAFAYETTE - WINTER PARK
Ph 303 666 0379 Fx 303 665 6320

CARRIZO NIOBRARA LLC
SHULL 1-35-9-60 PAD

NE1/4 NE1/4 SECTION 35 T9N R60W
6th PM WELD COUNTY COLORADO