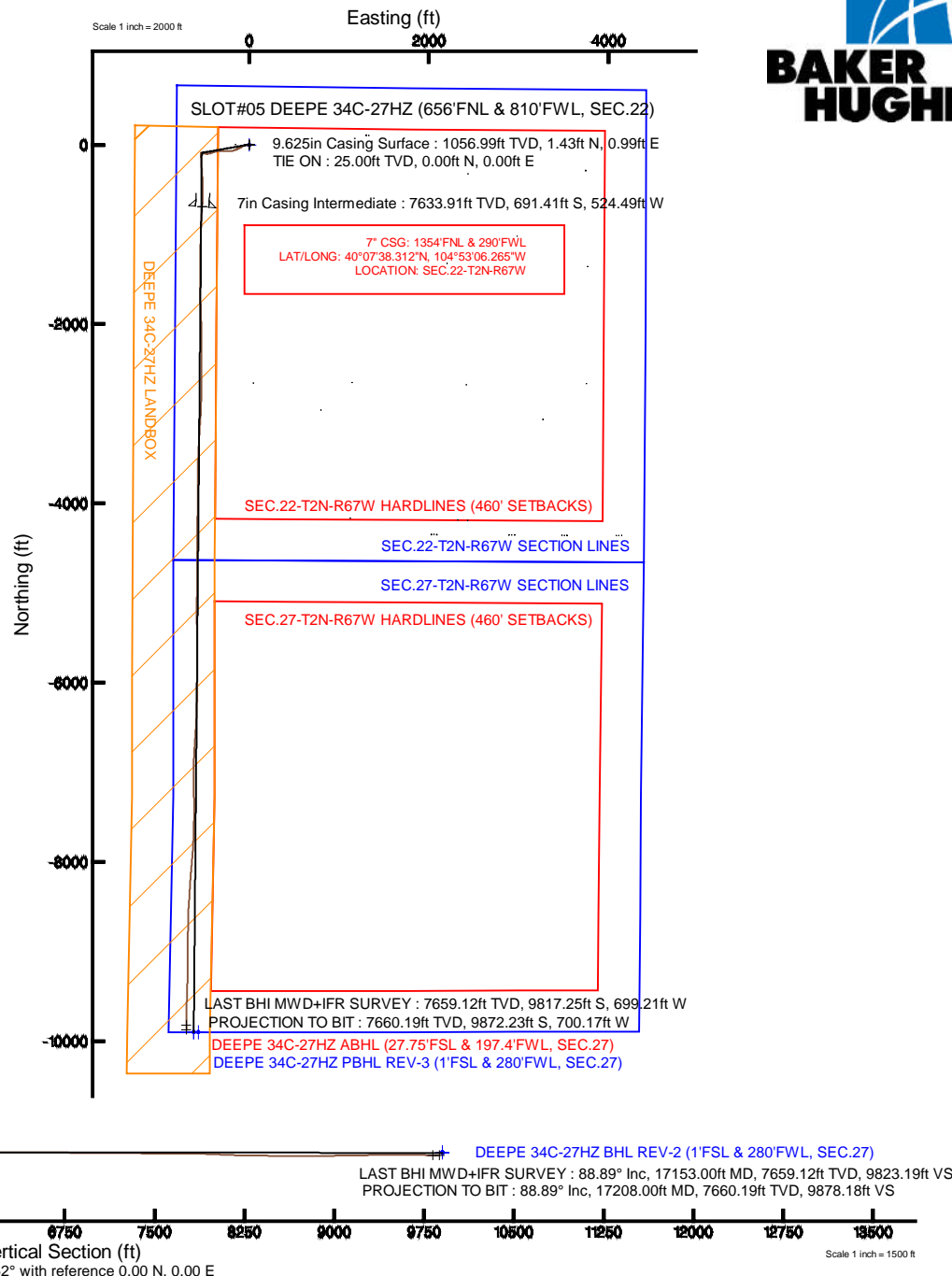
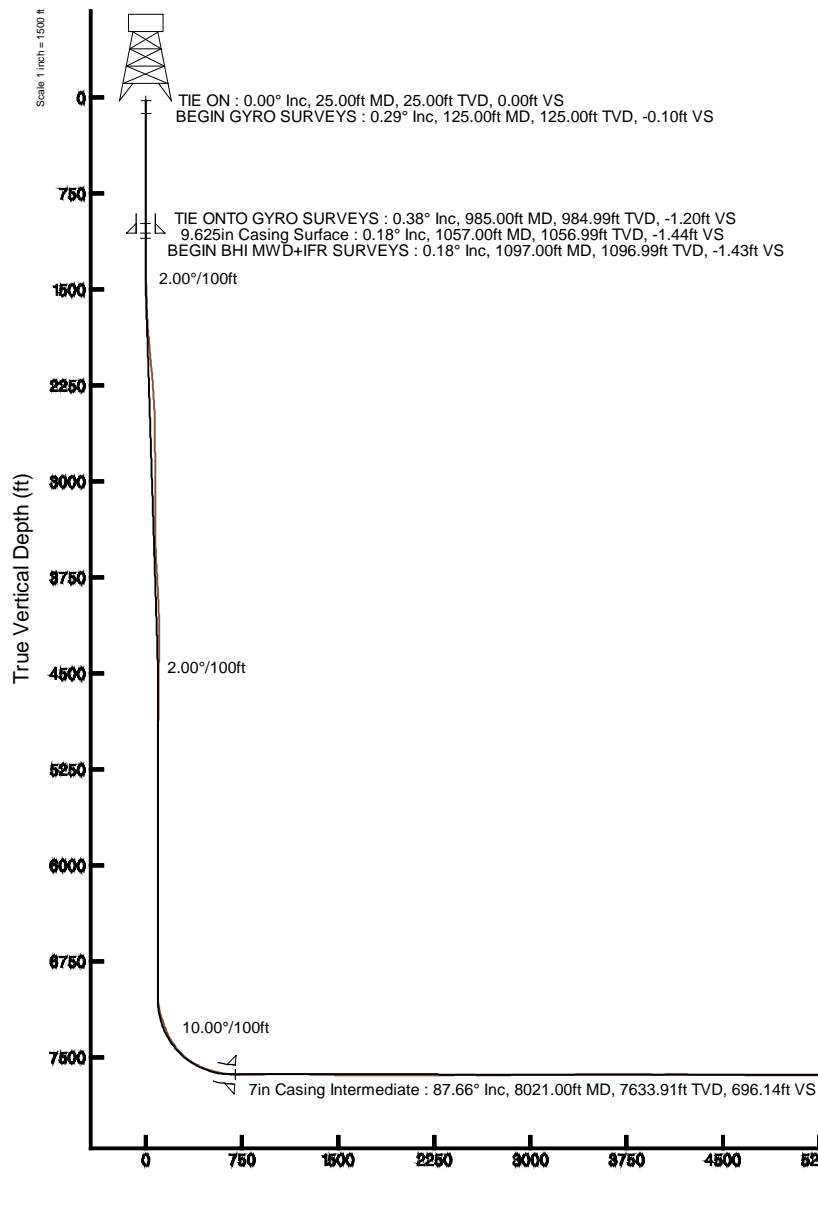


KERR-MCGEE OIL & GAS ONSHORE LP

Location: COLORADO Slot: SLOT#05 DEEPE 34C-27HZ (656'FNL & 810'FWL, SEC.22)
 Field: WELD COUNTY (KERR MCGEE) Well: DEEPE 34C-27HZ
 Facility: SEC.22-T2N-R67W Wellbore: DEEPE 34C-27HZ PWB

Plot reference wellpath is DEEPE 34C-27HZ (REV-D.0) PWP

True vertical depths are referenced to PRECISION 595 (25KB) (RKB)	Grid System: NAD83 / Lambert Colorado SP, Northern Zone (501), US feet
Measured depths are referenced to PRECISION 595 (25KB) (RKB)	North Reference: True north
PRECISION 595 (25KB) (RKB) to Mean Sea Level: 5032 feet	Scale: True distance
Mean Sea Level to Mud line (At Slot: SLOT#05 DEEPE 34C-27HZ (656'FNL & 810'FWL, SEC.22)): 0 feet	Depths are in feet
Coordinates are in feet referenced to Slot	Created by: robale01 on 25/Jun/2014



Actual Wellpath Report

DEEPE 34C-27HZ AWP

Page 1 of 6

REFERENCE WELLPATH IDENTIFICATION

Operator	KERR-MCGEE OIL & GAS ONSHORE LP	Slot	SLOT#05 DEEPE 34C-27HZ (656'FNL & 810'FWL, SEC.22)
Area	COLORADO	Well	DEEPE 34C-27HZ
Field	WELD COUNTY (KERR MCGEE)	Wellbore	DEEPE 34C-27HZ AWP
Facility	SEC.22-T2N-R67W		

REPORT SETUP INFORMATION

Projection System	NAD83 / Lambert Colorado SP, Northern Zone (501), US feet	Software System	WellArchitect® 4.0.0
North Reference	True	User	Robiale01
Scale	0.999959	Report Generated	17/Jun/2014 at 13:33
Convergence at slot	n/a	Database/Source file	WellArchitectDB/DEEPE_34C-27HZ_AWP.xml

WELLPATH LOCATION

	Local coordinates		Grid coordinates		Geographic coordinates	
	North[ft]	East[ft]	Easting[US ft]	Northing[US ft]	Latitude	Longitude
Slot Location	-107.13	-1300.61	3172470.50	1290513.71	40°07'45.145"N	104°52'59.513"W
Facility Reference Pt			3173770.27	1290629.95	40°07'46.204"N	104°52'42.769"W
Field Reference Pt			3197771.84	1268891.29	40°04'09.600"N	104°47'36.000"W

WELLPATH DATUM

Calculation method	Minimum curvature	PRECISION 595 (25'KB) (RKB) to Facility Vertical Datum	5032.00ft
Horizontal Reference Pt	Slot	PRECISION 595 (25'KB) (RKB) to Mean Sea Level	5032.00ft
Vertical Reference Pt	PRECISION 595 (25'KB) (RKB)	PRECISION 595 (25'KB) (RKB) to Mud Line at Slot (SLOT#05 DEEPE 34C-27HZ (656'FNL & 810'FWL, SEC.22))	5032.00ft
MD Reference Pt	PRECISION 595 (25'KB) (RKB)	Section Origin	N 0.00, E 0.00 ft
Field Vertical Reference	Mean Sea Level	Section Azimuth	184.06°

Actual Wellpath Report

DEEPE 34C-27HZ AWP

Page 2 of 6

REFERENCE WELLPATH IDENTIFICATION

Operator	KERR-MCGEE OIL & GAS ONSHORE LP	Slot	SLOT#05 DEEPE 34C-27HZ (656'FNL & 810'FWL, SEC.22)
Area	COLORADO	Well	DEEPE 34C-27HZ
Field	WELD COUNTY (KERR MCGEE)	Wellbore	DEEPE 34C-27HZ AWP
Facility	SEC.22-T2N-R67W		

WELLPATH DATA (133 stations) † = interpolated/extrapolated station

MD [ft]	Inclination [°]	Azimuth [°]	TVD [ft]	Vert Sect [ft]	North [ft]	East [ft]	Latitude	Longitude	DLS [°/100ft]	Comments
0.00†	0.000	66.420	0.00	0.00	0.00	0.00	40°07'45.145"N	104°52'59.513"W	0.00	
25.00	0.000	66.420	25.00	0.00	0.00	0.00	40°07'45.145"N	104°52'59.513"W	0.00	TIE ON
125.00	0.290	66.420	125.00	-0.12	0.10	0.23	40°07'45.146"N	104°52'59.510"W	0.29	BEGIN GYRO SURVEYS
225.00	0.260	45.870	225.00	-0.40	0.36	0.63	40°07'45.149"N	104°52'59.505"W	0.10	
325.00	0.170	309.410	325.00	-0.66	0.61	0.67	40°07'45.151"N	104°52'59.504"W	0.33	
425.00	0.270	169.020	425.00	-0.52	0.48	0.61	40°07'45.150"N	104°52'59.505"W	0.42	
525.00	0.410	78.650	525.00	-0.38	0.31	1.00	40°07'45.148"N	104°52'59.500"W	0.49	
625.00	0.290	353.900	625.00	-0.73	0.64	1.32	40°07'45.151"N	104°52'59.496"W	0.48	
725.00	0.190	246.420	724.99	-0.90	0.82	1.15	40°07'45.153"N	104°52'59.498"W	0.39	
825.00	0.160	76.000	824.99	-0.87	0.79	1.13	40°07'45.153"N	104°52'59.498"W	0.35	
925.00	0.150	17.160	924.99	-1.04	0.95	1.30	40°07'45.154"N	104°52'59.496"W	0.15	
985.00	0.380	328.460	984.99	-1.28	1.19	1.22	40°07'45.157"N	104°52'59.497"W	0.50	TIE ONTO GYRO SURVEYS
1097.00	0.180	239.780	1096.99	-1.48	1.42	0.88	40°07'45.159"N	104°52'59.502"W	0.37	BEGIN BHI MWD+IFR SURVEYS
1192.00	1.600	247.840	1191.98	-0.81	0.85	-0.48	40°07'45.153"N	104°52'59.519"W	1.50	
1286.00	4.230	261.250	1285.85	0.54	-0.18	-5.12	40°07'45.143"N	104°52'59.579"W	2.87	
1380.00	5.890	267.550	1379.48	1.85	-0.91	-13.37	40°07'45.136"N	104°52'59.685"W	1.86	
1475.00	7.260	265.760	1473.85	3.27	-1.56	-24.23	40°07'45.130"N	104°52'59.825"W	1.46	
1569.00	8.440	260.130	1566.97	5.79	-3.18	-36.95	40°07'45.114"N	104°52'59.989"W	1.50	
1664.00	9.660	251.810	1660.79	10.49	-6.87	-51.39	40°07'45.077"N	104°53'00.175"W	1.88	
1758.00	9.430	247.840	1753.49	16.87	-12.23	-66.01	40°07'45.024"N	104°53'00.363"W	0.74	
1852.00	10.240	243.820	1846.11	24.48	-18.83	-80.64	40°07'44.959"N	104°53'00.551"W	1.13	
1946.00	9.630	239.900	1938.70	33.11	-26.46	-94.94	40°07'44.884"N	104°53'00.735"W	0.97	
2046.00	11.180	242.410	2037.05	42.89	-35.14	-110.77	40°07'44.798"N	104°53'00.939"W	1.61	
2141.00	10.340	240.430	2130.38	52.44	-43.61	-126.35	40°07'44.714"N	104°53'01.140"W	0.97	
2235.00	10.670	246.100	2222.81	61.19	-51.30	-141.64	40°07'44.638"N	104°53'01.337"W	1.15	
2329.00	10.730	251.680	2315.18	68.61	-57.58	-157.91	40°07'44.576"N	104°53'01.546"W	1.10	
2424.00	10.200	249.910	2408.60	75.41	-63.25	-174.20	40°07'44.520"N	104°53'01.756"W	0.65	
2518.00	8.720	261.500	2501.33	80.37	-67.16	-189.07	40°07'44.481"N	104°53'01.947"W	2.56	
2612.00	8.810	267.820	2594.23	82.70	-68.49	-203.31	40°07'44.468"N	104°53'02.130"W	1.03	
2707.00	9.580	267.820	2688.01	84.35	-69.07	-218.48	40°07'44.462"N	104°53'02.326"W	0.81	
2801.00	10.710	269.190	2780.54	85.94	-69.49	-235.03	40°07'44.458"N	104°53'02.539"W	1.23	
2896.00	10.150	268.010	2873.97	87.57	-69.90	-252.22	40°07'44.454"N	104°53'02.760"W	0.63	
2989.00	9.500	268.540	2965.60	89.17	-70.38	-268.08	40°07'44.449"N	104°53'02.964"W	0.71	
3081.00	10.060	273.360	3056.27	90.00	-70.10	-283.70	40°07'44.452"N	104°53'03.165"W	1.08	
3264.00	9.450	269.400	3236.62	91.41	-69.32	-314.67	40°07'44.460"N	104°53'03.564"W	0.50	
3448.00	10.070	265.040	3417.96	95.16	-70.87	-345.81	40°07'44.445"N	104°53'03.965"W	0.52	
3633.00	10.550	255.450	3599.99	103.10	-76.53	-378.31	40°07'44.389"N	104°53'04.383"W	0.96	
3816.00	9.670	250.810	3780.15	114.51	-85.79	-409.05	40°07'44.297"N	104°53'04.779"W	0.65	
3996.00	8.900	254.190	3957.79	125.21	-94.55	-436.72	40°07'44.211"N	104°53'05.135"W	0.52	
4176.00	7.980	264.900	4135.85	131.93	-99.46	-462.57	40°07'44.162"N	104°53'05.468"W	1.01	
4355.00	8.420	278.010	4313.03	133.01	-98.73	-487.92	40°07'44.169"N	104°53'05.794"W	1.07	
4445.00	6.830	278.430	4402.24	132.14	-97.03	-499.74	40°07'44.186"N	104°53'05.947"W	1.77	
4535.00	5.290	274.680	4491.73	131.69	-95.91	-509.17	40°07'44.197"N	104°53'06.068"W	1.77	
4624.00	4.650	278.080	4580.40	131.39	-95.07	-516.83	40°07'44.205"N	104°53'06.167"W	0.79	
4714.00	3.140	290.830	4670.19	130.42	-93.68	-522.75	40°07'44.219"N	104°53'06.243"W	1.92	

Actual Wellpath Report

DEEPE 34C-27HZ AWP

Page 3 of 6

REFERENCE WELLPATH IDENTIFICATION

Operator	KERR-MCGEE OIL & GAS ONSHORE LP	Slot	SLOT#05 DEEPE 34C-27HZ (656'FNL & 810'FWL, SEC.22)
Area	COLORADO	Well	DEEPE 34C-27HZ
Field	WELD COUNTY (KERR MCGEE)	Wellbore	DEEPE 34C-27HZ AWB
Facility	SEC.22-T2N-R67W		

WELLPATH DATA (133 stations)

MD [ft]	Inclination [°]	Azimuth [°]	TVD [ft]	Vert Sect [ft]	North [ft]	East [ft]	Latitude	Longitude	DLS [°/100ft]	Comments
4804.00	1.700	284.400	4760.10	129.47	-92.47	-526.35	40°07'44.231"N	104°53'06.289"W	1.63	
4894.00	0.410	23.670	4850.09	128.93	-91.84	-527.51	40°07'44.237"N	104°53'06.304"W	2.01	
5253.00	0.220	49.260	5209.08	127.23	-90.22	-526.47	40°07'44.253"N	104°53'06.291"W	0.06	
5432.00	0.130	12.070	5388.08	126.79	-89.79	-526.17	40°07'44.258"N	104°53'06.287"W	0.08	
5791.00	0.320	335.070	5747.08	125.51	-88.49	-526.51	40°07'44.271"N	104°53'06.291"W	0.06	
6149.00	1.090	256.410	6105.06	125.67	-88.38	-530.24	40°07'44.272"N	104°53'06.339"W	0.30	
6239.00	0.940	222.640	6195.04	126.51	-89.12	-531.57	40°07'44.264"N	104°53'06.356"W	0.67	
6599.00	0.130	325.610	6555.03	128.49	-90.96	-533.80	40°07'44.246"N	104°53'06.385"W	0.27	
6987.00	1.120	317.110	6943.00	125.56	-87.82	-536.63	40°07'44.277"N	104°53'06.422"W	0.26	
7048.00	1.020	241.860	7003.99	125.44	-87.64	-537.51	40°07'44.279"N	104°53'06.433"W	2.15	
7092.00	5.220	195.150	7047.92	127.62	-89.75	-538.38	40°07'44.258"N	104°53'06.444"W	10.41	
7137.00	9.230	182.880	7092.56	133.24	-95.34	-539.10	40°07'44.203"N	104°53'06.453"W	9.50	
7182.00	12.880	176.070	7136.72	141.82	-103.95	-538.94	40°07'44.118"N	104°53'06.451"W	8.60	
7227.00	17.140	172.440	7180.17	153.28	-115.53	-537.72	40°07'44.003"N	104°53'06.436"W	9.69	
7271.00	18.970	174.340	7222.00	166.68	-129.08	-536.16	40°07'43.869"N	104°53'06.415"W	4.37	
7316.00	20.430	176.650	7264.37	181.68	-144.20	-534.98	40°07'43.720"N	104°53'06.400"W	3.68	
7361.00	24.010	178.650	7306.02	198.59	-161.19	-534.31	40°07'43.552"N	104°53'06.392"W	8.13	
7406.00	28.780	178.550	7346.32	218.50	-181.19	-533.82	40°07'43.354"N	104°53'06.385"W	10.60	
7451.00	33.320	177.050	7384.86	241.56	-204.37	-532.91	40°07'43.125"N	104°53'06.374"W	10.23	
7496.00	37.970	174.600	7421.42	267.50	-230.51	-530.97	40°07'42.867"N	104°53'06.349"W	10.81	
7541.00	43.180	174.210	7455.59	296.34	-259.63	-528.11	40°07'42.579"N	104°53'06.312"W	11.59	
7585.00	47.510	175.920	7486.51	327.25	-290.81	-525.43	40°07'42.271"N	104°53'06.277"W	10.22	
7630.00	52.650	177.390	7515.38	361.47	-325.25	-523.44	40°07'41.931"N	104°53'06.252"W	11.69	
7675.00	58.200	178.070	7540.90	398.28	-362.26	-521.98	40°07'41.565"N	104°53'06.233"W	12.40	
7720.00	63.770	178.410	7562.72	437.41	-401.58	-520.77	40°07'41.177"N	104°53'06.217"W	12.40	
7765.00	67.990	177.570	7581.11	478.24	-442.61	-519.33	40°07'40.771"N	104°53'06.199"W	9.53	
7810.00	71.500	178.670	7596.68	520.23	-484.80	-517.95	40°07'40.354"N	104°53'06.181"W	8.13	
7855.00	75.110	179.410	7609.61	563.16	-527.89	-517.23	40°07'39.928"N	104°53'06.172"W	8.18	
7900.00	77.660	180.740	7620.20	606.78	-571.62	-517.29	40°07'39.496"N	104°53'06.172"W	6.35	
7945.00	82.150	183.370	7628.09	651.04	-615.88	-518.88	40°07'39.059"N	104°53'06.193"W	11.52	
7989.00	86.740	184.600	7632.35	694.83	-659.55	-521.93	40°07'38.627"N	104°53'06.232"W	10.80	
8021.00	87.660	184.600	7633.91	726.79	-691.41	-524.49	40°07'38.312"N	104°53'06.265"W	2.87	7" CASING POINT
8085.00	89.850	182.350	7635.30	790.76	-755.27	-528.37	40°07'37.681"N	104°53'06.315"W	4.91	
8265.00	91.750	182.740	7632.79	970.67	-935.07	-536.36	40°07'35.905"N	104°53'06.418"W	1.08	
8444.00	89.470	181.210	7630.88	1149.52	-1113.93	-542.53	40°07'34.137"N	104°53'06.497"W	1.53	
8624.00	88.460	180.760	7634.13	1329.23	-1293.88	-545.62	40°07'32.359"N	104°53'06.537"W	0.61	
8804.00	88.920	179.930	7638.25	1508.81	-1473.82	-546.70	40°07'30.580"N	104°53'06.551"W	0.53	
8984.00	89.630	178.830	7640.53	1688.19	-1653.79	-544.76	40°07'28.802"N	104°53'06.526"W	0.73	
9163.00	90.340	178.420	7640.57	1866.38	-1832.74	-540.46	40°07'27.034"N	104°53'06.470"W	0.46	
9343.00	89.780	177.330	7640.39	2045.33	-2012.61	-533.79	40°07'25.256"N	104°53'06.384"W	0.68	
9532.00	90.520	179.910	7639.89	2233.47	-2201.54	-529.24	40°07'23.389"N	104°53'06.326"W	1.42	
9721.00	90.430	179.890	7638.32	2421.96	-2390.53	-528.91	40°07'21.521"N	104°53'06.321"W	0.05	
9909.00	89.570	182.150	7638.32	2609.68	-2578.49	-532.25	40°07'19.664"N	104°53'06.364"W	1.29	
10098.00	90.220	179.490	7638.67	2798.36	-2767.45	-534.96	40°07'17.797"N	104°53'06.399"W	1.45	
10287.00	90.620	182.940	7637.28	2987.10	-2956.38	-538.96	40°07'15.930"N	104°53'06.451"W	1.84	

Actual Wellpath Report

DEEPE 34C-27HZ AWP

Page 4 of 6

REFERENCE WELLPATH IDENTIFICATION

Operator	KERR-MCGEE OIL & GAS ONSHORE LP	Slot	SLOT#05 DEEPE 34C-27HZ (656'FNL & 810'FWL, SEC.22)
Area	COLORADO	Well	DEEPE 34C-27HZ
Field	WELD COUNTY (KERR MCGEE)	Wellbore	DEEPE 34C-27HZ AWP
Facility	SEC.22-T2N-R67W		

WELLPATH DATA (133 stations)

MD [ft]	Inclination [°]	Azimuth [°]	TVD [ft]	Vert Sect [ft]	North [ft]	East [ft]	Latitude	Longitude	DLS [°/100ft]	Comments
10471.00	90.280	183.490	7635.84	3171.07	-3140.08	-549.28	40°07'14.114"N	104°53'06.584"W	0.35	
10655.00	91.080	183.430	7633.66	3355.05	-3323.73	-560.39	40°07'12.299"N	104°53'06.726"W	0.44	
10747.00	89.880	182.780	7632.88	3447.03	-3415.59	-565.37	40°07'11.392"N	104°53'06.791"W	1.48	
10932.00	89.940	180.950	7633.18	3631.89	-3600.48	-571.39	40°07'09.565"N	104°53'06.868"W	0.99	
11116.00	90.460	180.530	7632.53	3815.58	-3784.47	-573.77	40°07'07.746"N	104°53'06.899"W	0.36	
11208.00	89.320	180.100	7632.71	3907.38	-3876.46	-574.27	40°07'06.837"N	104°53'06.905"W	1.32	
11391.00	90.430	180.300	7633.11	4089.96	-4059.46	-574.91	40°07'05.029"N	104°53'06.913"W	0.62	
11575.00	89.410	180.500	7633.37	4273.58	-4243.45	-576.20	40°07'03.211"N	104°53'06.930"W	0.56	
11764.00	89.510	181.080	7635.15	4462.27	-4432.42	-578.80	40°07'01.343"N	104°53'06.963"W	0.31	
11953.00	89.010	179.850	7637.59	4650.87	-4621.40	-580.34	40°06'59.476"N	104°53'06.983"W	0.70	
12142.00	89.080	180.230	7640.74	4839.38	-4810.37	-580.47	40°06'57.608"N	104°53'06.984"W	0.20	
12321.00	90.000	180.510	7642.18	5018.01	-4989.36	-581.62	40°06'55.840"N	104°53'06.999"W	0.54	
12411.00	90.680	180.930	7641.64	5107.85	-5079.35	-582.75	40°06'54.950"N	104°53'07.014"W	0.89	
12501.00	90.520	180.400	7640.70	5197.69	-5169.34	-583.80	40°06'54.061"N	104°53'07.027"W	0.62	
12680.00	90.060	178.530	7639.79	5376.10	-5348.32	-582.13	40°06'52.292"N	104°53'07.006"W	1.08	
12762.00	90.490	178.830	7639.40	5457.74	-5430.30	-580.24	40°06'51.482"N	104°53'06.981"W	0.64	
12940.00	90.770	180.430	7637.44	5635.19	-5608.28	-579.09	40°06'49.723"N	104°53'06.966"W	0.91	
13120.00	88.710	179.470	7638.26	5814.72	-5788.26	-578.93	40°06'47.945"N	104°53'06.964"W	1.26	
13211.00	90.770	180.040	7638.67	5905.45	-5879.26	-578.54	40°06'47.045"N	104°53'06.959"W	2.35	
13390.00	90.370	180.630	7636.89	6084.07	-6058.24	-579.59	40°06'45.277"N	104°53'06.973"W	0.40	
13570.00	90.960	181.090	7634.80	6263.77	-6238.21	-582.29	40°06'43.498"N	104°53'07.007"W	0.42	
13749.00	89.320	183.490	7634.36	6442.67	-6417.05	-589.44	40°06'41.731"N	104°53'07.099"W	1.62	
13928.00	90.090	183.620	7635.29	6621.66	-6595.70	-600.54	40°06'39.965"N	104°53'07.242"W	0.44	
14108.00	88.170	183.620	7638.02	6801.62	-6775.31	-611.90	40°06'38.191"N	104°53'07.388"W	1.07	
14287.00	89.600	180.970	7641.50	6980.48	-6954.11	-619.07	40°06'36.424"N	104°53'07.481"W	1.68	
14467.00	90.740	178.650	7640.97	7159.97	-7134.10	-618.47	40°06'34.645"N	104°53'07.473"W	1.44	
14646.00	88.730	179.020	7641.80	7338.22	-7313.05	-614.83	40°06'32.877"N	104°53'07.426"W	1.14	
14736.00	88.950	180.100	7643.62	7427.92	-7403.02	-614.14	40°06'31.987"N	104°53'07.417"W	1.22	
14916.00	90.030	181.140	7645.22	7607.59	-7583.00	-616.09	40°06'30.209"N	104°53'07.442"W	0.83	
15095.00	89.850	182.620	7645.41	7786.45	-7761.90	-621.96	40°06'28.441"N	104°53'07.518"W	0.83	
15275.00	87.630	184.730	7649.37	7966.38	-7941.47	-633.49	40°06'26.666"N	104°53'07.666"W	1.70	
15455.00	87.600	184.970	7656.86	8146.21	-8120.67	-648.70	40°06'24.896"N	104°53'07.862"W	0.13	
15634.00	89.350	183.210	7661.62	8325.13	-8299.13	-661.46	40°06'23.132"N	104°53'08.026"W	1.39	
15814.00	89.350	184.240	7663.66	8505.12	-8478.74	-673.15	40°06'21.357"N	104°53'08.176"W	0.57	
15993.00	90.460	180.520	7663.96	8684.01	-8657.55	-680.58	40°06'19.590"N	104°53'08.272"W	2.17	
16173.00	89.750	180.780	7663.63	8863.69	-8837.54	-682.63	40°06'17.811"N	104°53'08.298"W	0.42	
16353.00	90.620	180.620	7663.05	9043.37	-9017.52	-684.83	40°06'16.033"N	104°53'08.326"W	0.49	
16532.00	91.300	179.940	7660.05	9221.96	-9196.49	-685.70	40°06'14.264"N	104°53'08.337"W	0.54	
16712.00	91.020	182.610	7656.40	9401.69	-9376.39	-689.70	40°06'12.486"N	104°53'08.389"W	1.49	
16801.00	89.660	181.710	7655.88	9490.64	-9465.32	-693.06	40°06'11.607"N	104°53'08.432"W	1.83	
16981.00	89.660	180.640	7656.94	9670.41	-9645.28	-696.75	40°06'09.829"N	104°53'08.479"W	0.59	
17153.00	88.890	181.000	7659.12	9842.12	-9817.25	-699.21	40°06'08.130"N	104°53'08.511"W	0.49	LAST BHI MWD+IFR SURVEY
17208.00	88.890	181.000	7660.19	9897.03	-9872.23	-700.17	40°06'07.586"N	104°53'08.523"W	0.00	PROJECTION TO BIT

Actual Wellpath Report

DEEPE 34C-27HZ AWP

Page 5 of 6

REFERENCE WELLPATH IDENTIFICATION

Operator	KERR-MCGEE OIL & GAS ONSHORE LP	Slot	SLOT#05 DEEPE 34C-27HZ (656'FNL & 810'FWL, SEC.22)
Area	COLORADO	Well	DEEPE 34C-27HZ
Field	WELD COUNTY (KERR MCGEE)	Wellbore	DEEPE 34C-27HZ AWB
Facility	SEC.22-T2N-R67W		

HOLE & CASING SECTIONS - Ref Wellbore: DEEPE 34C-27HZ AWB Ref Wellpath: DEEPE 34C-27HZ AWP

String/Diameter	Start MD [ft]	End MD [ft]	Interval [ft]	Start TVD [ft]	End TVD [ft]	Start N/S [ft]	Start E/W [ft]	End N/S [ft]	End E/W [ft]
13.5in Open Hole	25.00	1067.00	1042.00	25.00	1066.99	0.00	0.00	1.44	0.96
9.625in Casing Surface	25.00	1057.00	1032.00	25.00	1056.99	0.00	0.00	1.43	0.99
8.75in Open Hole	1067.00	8032.00	6965.00	1066.99	7634.32	1.44	0.96	-702.37	-525.34
7in Casing Intermediate	25.00	8021.00	7996.00	25.00	7633.91	0.00	0.00	-691.41	-524.49
6.125in Open Hole	8032.00	17208.00	9176.00	7634.32	7660.19	-702.37	-525.34	-9872.23	-700.17

WELLPATH COMPOSITION - Ref Wellbore: DEEPE 34C-27HZ AWB Ref Wellpath: DEEPE 34C-27HZ AWP

Start MD [ft]	End MD [ft]	Positional Uncertainty Model	Log Name/Comment	Wellbore
25.00	985.00	Generic gyro - continuous (Standard)	MS ENERGY GYRO SURVEYS <125-985>	DEEPE 34C-27HZ AWB
985.00	7989.00	NaviTrak (MAGCORR,IFR)	BHI NAVITRAK MWD+IFR 8 3/4" <1097-7989>	DEEPE 34C-27HZ AWB
7989.00	17153.00	NaviTrak (MAGCORR,IFR)	BHI NAVITRAK MWD 6 1/8" <8021-17153>	DEEPE 34C-27HZ AWB
17153.00	17208.00	Blind Drilling (std)	Projection to bit	DEEPE 34C-27HZ AWB

Actual Wellpath Report

DEEPE 34C-27HZ AWP

Page 6 of 6

REFERENCE WELLPATH IDENTIFICATION

Operator	KERR-MCGEE OIL & GAS ONSHORE LP	Slot	SLOT#05 DEEPE 34C-27HZ (656'FNL & 810'FWL, SEC.22)
Area	COLORADO	Well	DEEPE 34C-27HZ
Field	WELD COUNTY (KERR MCGEE)	Wellbore	DEEPE 34C-27HZ AWB
Facility	SEC.22-T2N-R67W		

WELLPATH COMMENTS

MD [ft]	Inclination [°]	Azimuth [°]	TVD [ft]	Comment
25.00	0.000	66.420	25.00	TIE ON
125.00	0.290	66.420	125.00	BEGIN GYRO SURVEYS
985.00	0.380	328.460	984.99	TIE ONTO GYRO SURVEYS
1097.00	0.180	239.780	1096.99	BEGIN BHI MWD+IFR SURVEYS
8021.00	87.660	184.600	7633.91	7" CASING POINT
17153.00	88.890	181.000	7659.12	LAST BHI MWD+IFR SURVEY
17208.00	88.890	181.000	7660.19	PROJECTION TO BIT