

**ANADARKO PETROLEUM CORP - EBUS  
DO NOT MAIL - PO BOX 4995  
THE WOODLANDS, Texas**

Deepe 34C-27HZ

**Majors 42**

## **Post Job Summary**

# **Cement Surface Casing**

Date Prepared: 3/10/2014  
Version: 1

Service Supervisor: VIGIL, NICHOLAS

Submitted by: PRUDHOMME, JOSHUA

# HALLIBURTON

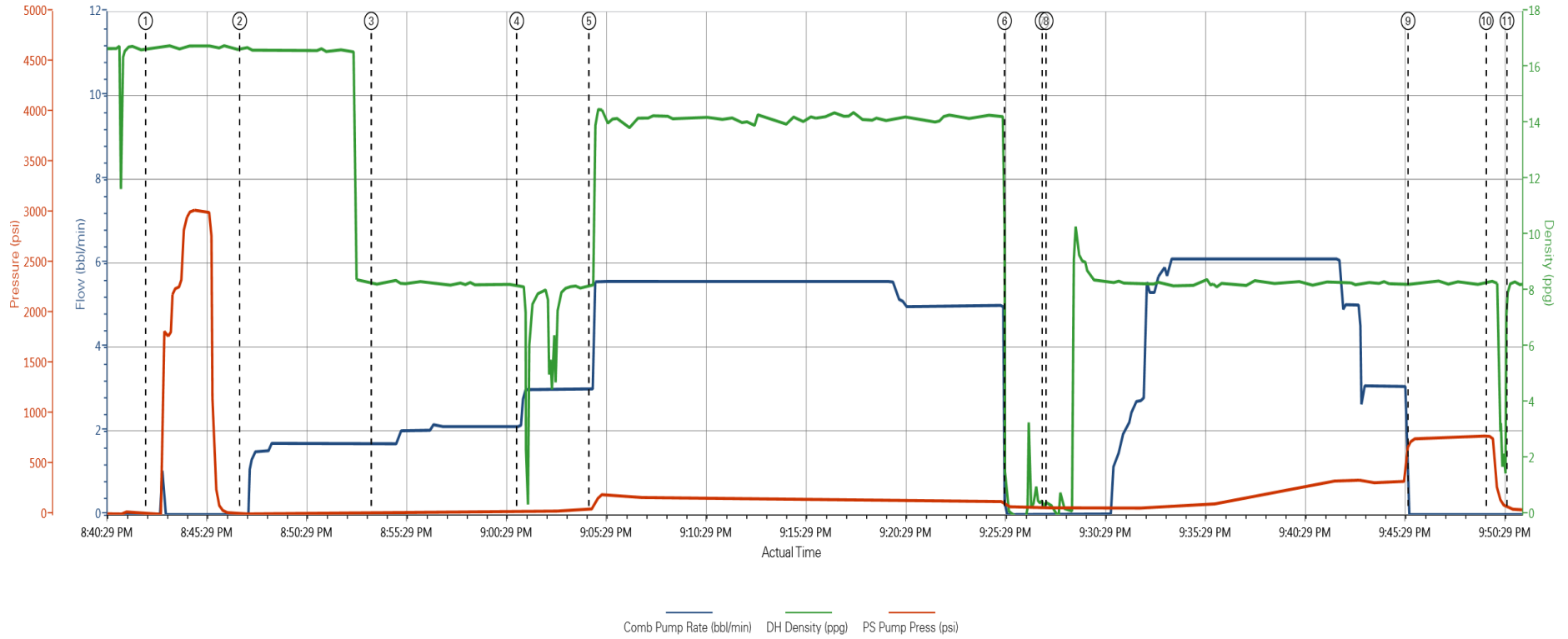
## ***Pumping Schedule***

---

<b>Stage /Plug #</b>	<b>Fluid #</b>	<b>Fluid Type</b>	<b>Fluid Name</b>	<b>Surface Density lbm/gal</b>	<b>Avg Rate bbl/min</b>	<b>Surface Volume</b>	<b>Downhole Volume</b>
1	1	Spacer	Fresh Water Spacer	8.33	1.7	10.0 bbl	10.0 bbl
1	1	Spacer	Mud Flush	8.50	2.0	12.0 bbl	12.0 bbl
1	1	Spacer	Fresh Water Spacer	8.33	3.0	10.0 bbl	10.0 bbl
1	2	Cement Slurry	SwiftCem B2	14.2	5.5	372.0 sacks	372.0 sacks

## Data Acquisition

Anadarko Deepe 34C-27HN



① Start Job ② Pump Spacer 1 ③ Pump Spacer 2 ④ Pump Spacer 1 ⑤ Pump Cement ⑥ Shutdown ⑦ Drop Top Plug ⑧ Pump Displacement ⑨ Bump Plug ⑩ Other ⑪ End Job

▼ HALLIBURTON | iCem® Service

Created: 2014-03-02 18:45:18, Version: 3.0.121

Edit

Customer: ANADARKO PETROLEUM CORP - EBUS

Job Date: 3/2/2014 6:47:05 PM

Well: Deepe 34C-27HZ

Representative: Nicholas Vigil

Sales Order #: 901162481

Job Type: 9 5/8 Surface

# HALLIBURTON

## Service Supervisor Reports

### Job Log

Date/Time	Chart #	Activity Code	Pump Rate	Cum Vol	Pump	Pressure (psig)	Comments
03/02/2014 10:45		Arrive At Loc					On location time was 1030, Rig had issues with their backhoe and were unable to start running casing.
03/02/2014 10:55		Assessment Of Location Safety Meeting					Hazard hunt, Rig up safety meeting, Water test
03/02/2014 11:05		Rig-Up Equipment					We rigged up what we could without getting in the way of the rig operations
03/02/2014 11:15		Wait on Customer or Customer Sub-Contractor Equip					
03/02/2014 18:30		Wait on Customer or Customer Sub-Contractor Equipment					
03/02/2014 18:54		Rig-Up Equipment					
03/02/2014 19:12		Rig-Up Completed					Rig had to circulate for a while still
03/02/2014 20:20		Pre-Job Safety Meeting					Held safety meeting with all personnel on location
03/02/2014 20:42		Start Job					
03/02/2014 20:43		Test Lines					Pressure tested lines to 3000 psi
03/02/2014 20:47		Pump Spacer 1	1.7	10		22.0	Water Spacer
03/02/2014 20:53		Pump Spacer 2	2	12		30.0	Mud Flush
03/02/2014 21:01		Pump Spacer 1	3	10		30.0	Water Spacer
03/02/2014 21:04		Pump Cement	5.5	102		152.0	14.2 ppg SwiftCem (372 sks), weight was verified by scale
03/02/2014 21:25		Shutdown					
03/02/2014 21:27		Drop Top Plug					Plug was pre loaded
03/02/2014 21:27		Pump Displacement	6	40		201.0	Displaced using fresh water
03/02/2014 21:45		Bump Plug	3	76.7		300.0	Bumped plug 500 psi over final lift bringing our pressure up to 800 psi
03/02/2014 21:49		Check Floats					Floats held
03/02/2014 21:50		End Job					Rig down safety meeting
03/02/2014 22:00		Rig-Down Equipment					
03/02/2014 22:45		Rig-Down Completed					

*The Road to Excellence Starts with Safety*

<b>Sold To #:</b> 300466		<b>Ship To #:</b> 3359213		<b>Quote #:</b>		<b>Sales Order #:</b> 901162481		
<b>Customer:</b> ANADARKO PETROLEUM CORP - EBUS				<b>Customer Rep:</b> Porter, Bob				
<b>Well Name:</b> Deepe			<b>Well #:</b> 34C-27HZ		<b>API/UWI #:</b> 05-123-38562			
<b>Field:</b>		<b>City (SAP):</b> FIRESTONE		<b>County/Parish:</b> Weld		<b>State:</b> Colorado		
<b>Contractor:</b> Majors			<b>Rig/Platform Name/Num:</b> Majors 42					
<b>Job Purpose:</b> Cement Surface Casing								
<b>Well Type:</b> Development Well				<b>Job Type:</b> Cement Surface Casing				
<b>Sales Person:</b> FLING, MATTHEW			<b>Srvc Supervisor:</b> VIGIL, NICHOLAS			<b>MBU ID Emp #:</b> 443481		
<b>Job Personnel</b>								
<b>HES Emp Name</b>	<b>Exp Hrs</b>	<b>Emp #</b>	<b>HES Emp Name</b>	<b>Exp Hrs</b>	<b>Emp #</b>	<b>HES Emp Name</b>	<b>Exp Hrs</b>	<b>Emp #</b>
ACEVEDO, ROBERTO Carlos	0.0	551312	ELAM, JUSTIN Wade	0.0	551617	VIGIL, NICHOLAS Joseph	4.0	443481
<b>Equipment</b>								
<b>HES Unit #</b>	<i>Distance-1 way</i>	<b>HES Unit #</b>	<i>Distance-1 way</i>	<b>HES Unit #</b>	<i>Distance-1 way</i>	<b>HES Unit #</b>	<i>Distance-1 way</i>	
11398490	10 mile							
<b>Job</b>				<b>Job Times</b>				
<b>Formation Name</b>				<b>Date</b>				
<b>Formation Depth (MD)</b> <b>Top</b> <b>Bottom</b>				<b>Time</b> <b>Time Zone</b>				
				<b>Called Out</b> 02 - Mar - 2014 06:15 MST				
<b>Form Type</b>		<b>BHST</b>		<b>On Location</b> 02 - Mar - 2014 10:45 MST				
<b>Job depth MD</b> 1038. ft		<b>Job Depth TVD</b> 1038. ft		<b>Job Started</b> 02 - Mar - 2014 20:42 MST				
<b>Water Depth</b>		<b>Wk Ht Above Floor</b>		<b>Job Completed</b> 02 - Mar - 2014 21:50 MST				
<b>Perforation Depth (MD)</b> <i>From</i>		<i>To</i>		<b>Departed Loc</b> 02 - Mar - 2014 23:00 MST				

Fluid Data									
Stage/Plug #: 1									
Fluid #	Stage Type	Fluid Name	Qty	Qty uom	Mixing Density lbm/gal	Yield ft <sup>3</sup> /sk	Mix Fluid Gal/sk	Rate bbl/min	Total Mix Fluid Gal/sk
1	Fresh Water Spacer		10.0	bbl	8.33			1.7	
1	Mud Flush		12.0	bbl	8.5			2.0	
	42 gal/Mgal	FRESH WATER							
	0 gal/Mgal	MUD FLUSH III - SBM (528788)							
	3.33 lbm/bbl	MUD FLUSH III, 40 LB SACK (101633304)							
1	Fresh Water Spacer		10.0	bbl	8.33			3.0	
2	SwiftCem B2	SWIFTCEM (TM) SYSTEM (452990)	372	sacks	14.2	1.54	7.66	5.5	7.66
	7.66 Gal	FRESH WATER							
Calculated Values		Pressures		Volumes					
Displacement		Shut In: Instant		Lost Returns		Cement Slurry		Pad	
Top Of Cement		5 Min		Cement Returns		Actual Displacement	76.7	Treatment	
Frac Gradient		15 Min		Spacers		Load and Breakdown		Total Job	
Rates									
Circulating		Mixing		Displacement		Avg. Job			
Cement Left In Pipe	Amount	0 ft	Reason	Shoe Joint					
Frac Ring # 1 @	ID	Frac ring # 2 @	ID	Frac Ring # 3 @	ID	Frac Ring # 4 @	ID		
The Information Stated Herein Is Correct				Customer Representative Signature					

