

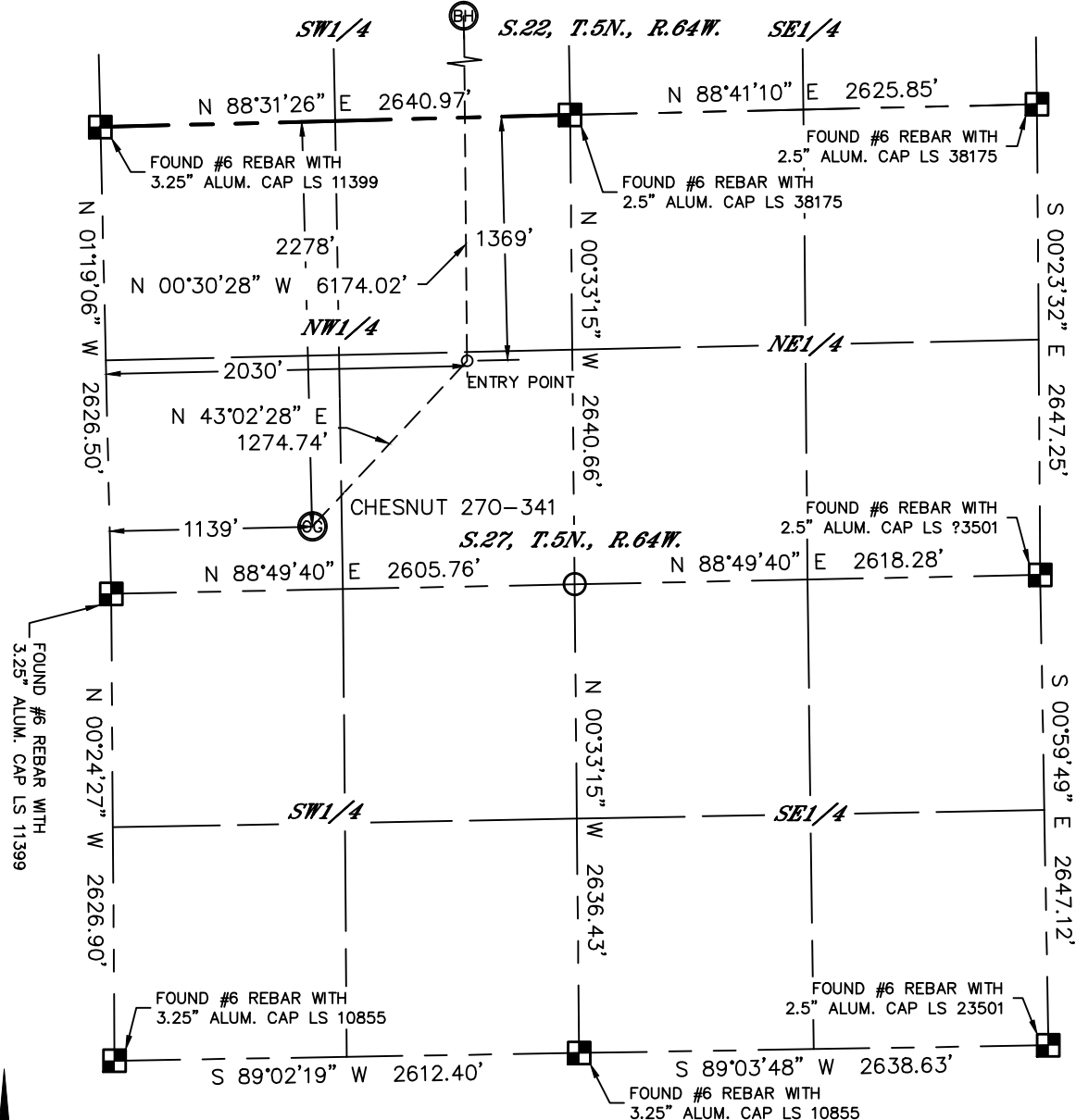


Lat40°, Inc. 1635 Foxtrail Drive, Suite 325 Loveland, CO 970-776-3321

WELL LOCATION CERTIFICATE

THIS MAP DOES NOT REPRESENT A BOUNDARY SURVEY

SECTION: 27
TOWNSHIP: 5N
RANGE: 64W



In accordance with a request from Jeff Dillingham with PDC ENERGY Lat40°, Inc. has determined the surface location of the CHESNUT 270-341 to be 2278' from the NORTH line and 1139' from the WEST line as measured at right angles from the section lines of Section 27, Township 5 North, Range 64 West and the bottom hole to be 500' from the NORTH line and 2110' from the WEST line as measured at right angles from the section lines of Section 22, Township 5 North, Range 64 West of the Sixth Principal Meridian, County of Weld, State of Colorado.

I hereby state that this Well Location Certificate was prepared by me, or under my direct supervision, that the fieldwork was completed on 6/17/2014, for and on behalf of PDC ENERGY. That this is not a Land Survey Plat or an Improvement Survey Plat, and that it is not to be relied upon for establishment of fence, building, or other future improvement lines.

NOTE:

- 1) Bearings shown are Grid Bearings of the Colorado State Plane Coordinate System, North Zone, North American Datum 1983. The lineal dimensions as contained herein are based upon the "U.S. Survey Foot."
- 2) Ground elevations are based on an observed GPS elevation (NAVD 1988 DATUM).
- 3) IMPROVEMENTS: See LOCATION DRAWING for all visible improvements within 500' of disturbed area.
- 4) SURFACE USE: RANGELAND
- 5) INSTRUMENT OPERATOR: BRIAN ROTTINGHAUS
- 6) NEAREST CULTURAL ITEMS:
BUILDING ±914' NW
BUILDING UNIT (VACANT) ±1279' SW
HIGH OCCUPANCY BUILDING UNIT ±5280'
DESIGNATED OUTSIDE ACTIVITY AREA ±5280'
PUBLIC ROAD (CR 55) ±1120' W
ABOVE GROUND UTILITY ±1104' W
RAILROAD ±5064'
PROPERTY LINE ±820' NW

SURFACE LOCATION

LAT: 40.37124°N
LONG: 104.54108°W
PDOP: 1.8
ELEV: 4614'
1/4,1/4: SW1/4NW1/4

ENTRY POINT

LAT: 40.37377°N
LONG: 104.53792°W
1/4,1/4: SW1/4NW1/4

BOTTOM HOLE

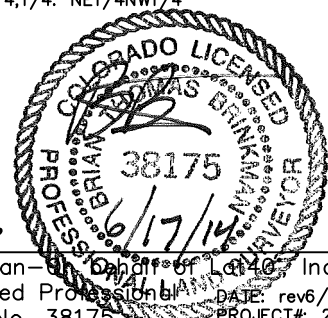
LAT: 40.39072°N
LONG: 104.53788°W
1/4,1/4: NE1/4NW1/4

LEGEND

- = ALIQUOT MONUMENT AS DESCRIBED
○ = CALCULATED POSITION

SHEET 1 OF 2

Brian T. Brinkman—Land Surveyor of Lat40°, Inc.
Colorado Licensed Professional Land Surveyor No. 38175
DATE: rev6/17/2014
PROJECT#: 2014004



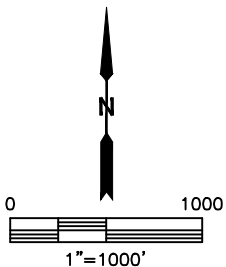
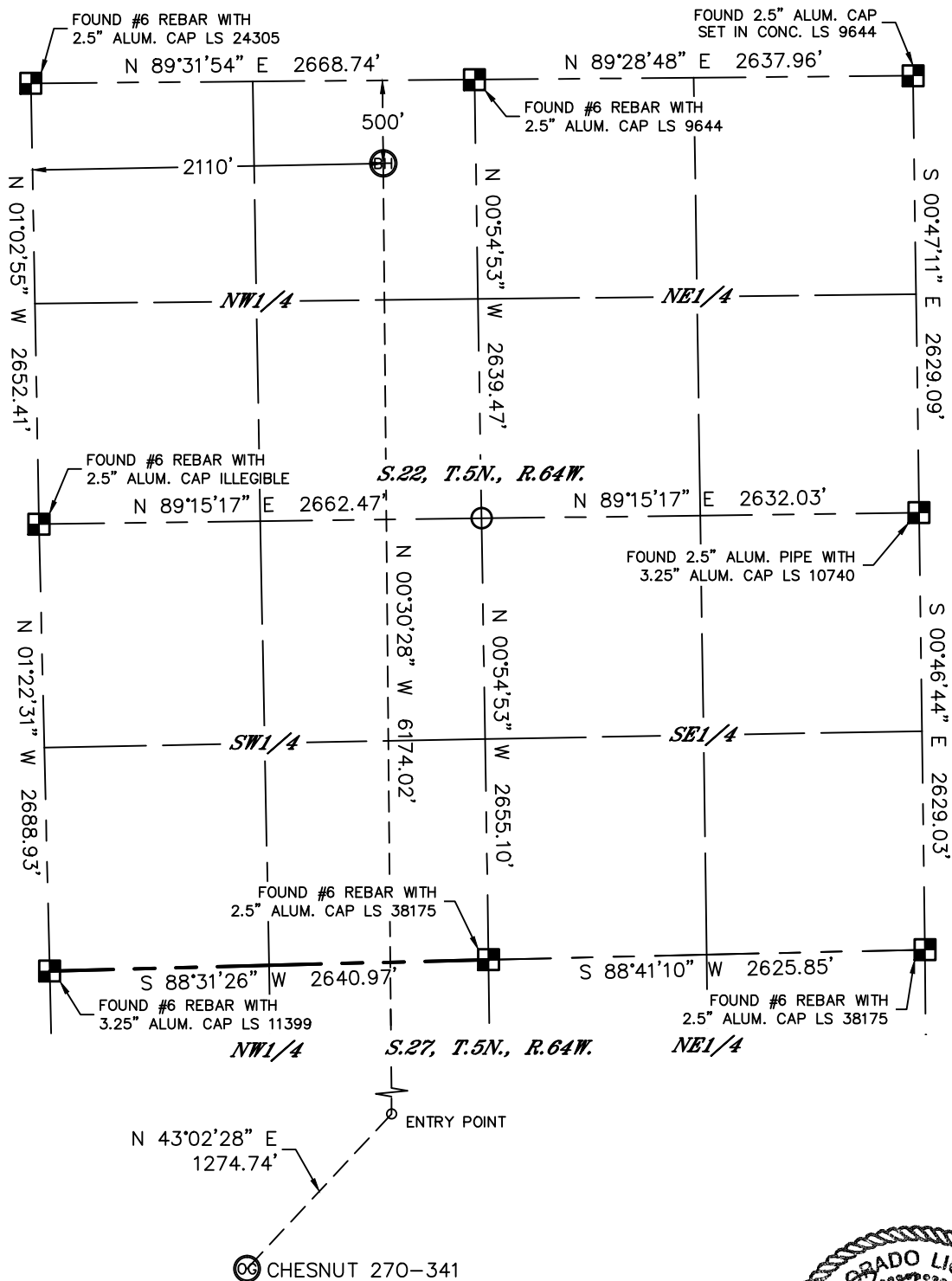


Lat40°, Inc. 1635 Foxtrail Drive, Suite 325 Loveland, CO 970-776-3321

WELL LOCATION CERTIFICATE

THIS MAP DOES NOT REPRESENT A BOUNDARY SURVEY

SECTION: 27
TOWNSHIP: 5N
RANGE: 64W

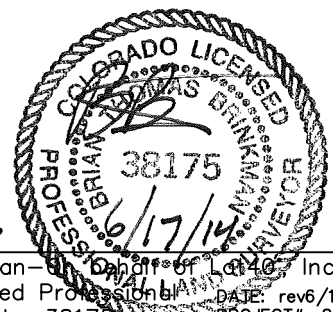


LEGEND

- = ALIQUOT MONUMENT AS DESCRIBED
- = CALCULATED POSITION

SHEET 2 OF 2

Brian T. Brinkman—Surveyor for Lat40°, Inc.
Colorado Licensed Professional Land Surveyor No. 38175
DATE: rev6/17/2014
PROJECT#: 2014004



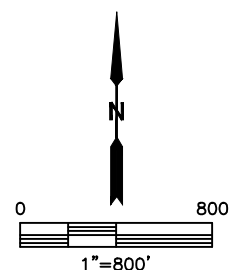
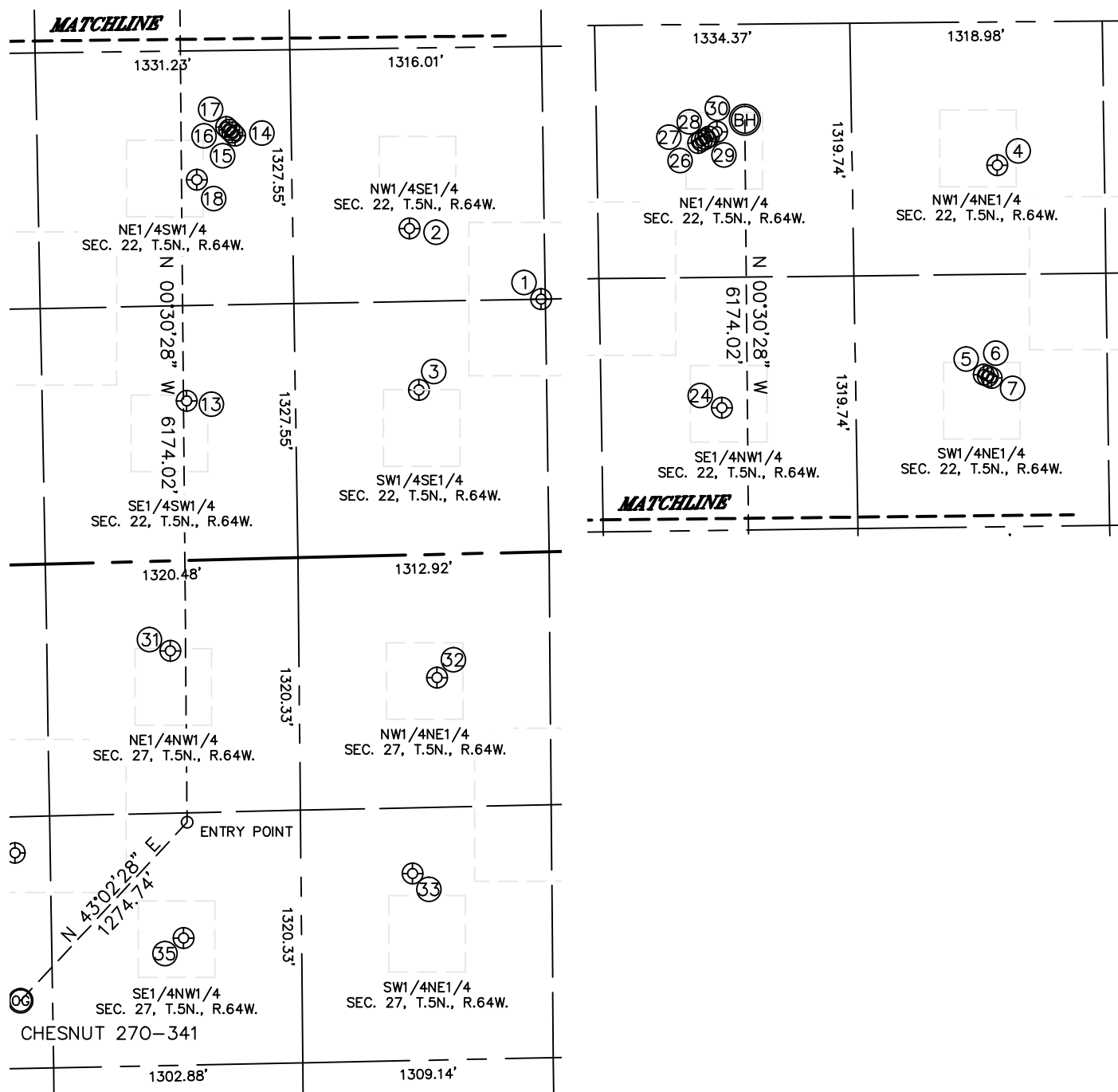


Lat40°, Inc. 1635 Foxtrail Drive, Suite 325 Loveland, CO 970-776-3321

SITE SKETCH

CHESNUT 270-341

SECTION: 27
TOWNSHIP: 5N
RANGE: 64W





Lat40°, Inc. 1635 Foxtrail Drive, Suite 325 Loveland, CO 970-776-3321

SITE SKETCH

CHESNUT 270-341

SECTION: 27
TOWNSHIP: 5N
RANGE: 64W

WELL NO.	WELL NAME	SHL FOOTAGE				SHL LAT°	SHL LONG°	PDOP	ELEV (FT.)	1/4/1/4
1	EMANCIPATOR B 22-23	1321	FSL	1337	FEL	40.38122	-104.53118	1.9	4601	SWSE
2	EMANCIPATOR 22-10	1705	FSL	2020	FEL	40.38226	-104.53363	1.7	4604	NWSE
3	EMANCIPATOR 22-15	861	FSL	1981	FEL	40.37994	-104.53349	1.6	4603	SWSE
4	TROY 1	749	FNL	1878	FEL	40.39003	-104.53315	1.6	4575	NWNE
5	P & H 22CD	1842	FNL	1964	FEL	40.38703	-104.53345	3.9	4604	SWNE
6	P & H 22SD	1850	FNL	1943	FEL	40.38700	-104.53337	3.9	4604	SWNE
7	P & H 22-32	1860	FNL	1922	FEL	40.38698	-104.53330	3.8	4603	SWNE
13	CHESNUT 22-24	834	FSL	2078	FWL	40.37982	-104.53785	1.8	4601	SESW
14	CHESNUT 22KD	2212	FSL	2365	FWL	40.38362	-104.53689	1.8	4603	NESW
15	CHESNUT 22OD	2228	FSL	2351	FWL	40.38366	-104.53694	1.7	4603	NESW
16	CHESNUT 22BD	2244	FSL	2335	FWL	40.38370	-104.53699	1.7	4603	NESW
17	CHESNUT 22PD	2260	FSL	2320	FWL	40.38374	-104.53705	1.7	4603	NESW
18	CHESNUT 22-23	1988	FSL	2160	FWL	40.38299	-104.53761	1.8	4602	NESW
24	RICE 22-1	2003	FNL	1962	FWL	40.38660	-104.53837	1.8	4606	SENW
26	BAUER DEBUS 22AD	619	FNL	1863	FWL	40.39039	-104.53876	2.0	4576	NENW
27	BAUER DEBUS 22JD	608	FNL	1882	FWL	40.39042	-104.53869	2.0	4576	NENW
28	BAUER DEBUS 22ND	598	FNL	1901	FWL	40.39045	-104.53863	2.0	4576	NENW
29	BAUER DEBUS 22MD	587	FNL	1920	FWL	40.39048	-104.53856	1.7	4576	NENW
30	JOSHUA 1	561	FNL	1963	FWL	40.39055	-104.53841	1.7	4576	NENW
31	WHITE 27-5	471	FNL	1962	FWL	40.37624	-104.53821	3.0	4600	NENW
32	HERBST 27-1	645	FNL	1904	FEL	40.37581	-104.53321	2.1	4600	NWNE
33	HERBST B 27-7	1665	FNL	2039	FEL	40.37301	-104.53371	2.4	4599	SWNE
35	WHITE 27-3	1973	FNL	1998	FWL	40.37212	-104.53801	2.0	4601	SENW