

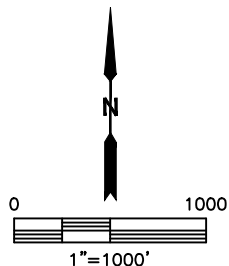
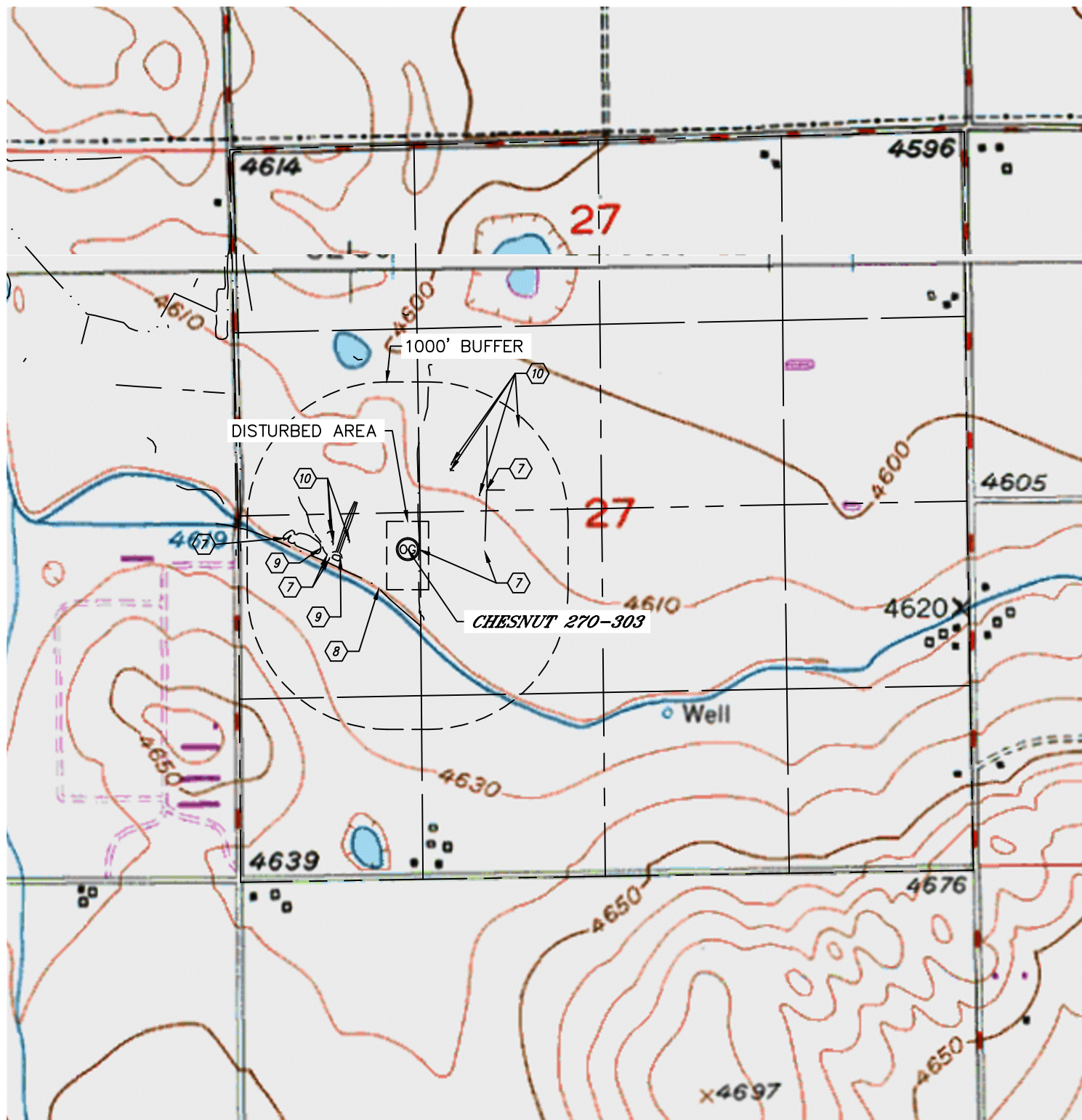


Lat40°, Inc. 1635 Foxtrail Drive, Suite 325 Loveland, CO 970-776-3321

HYDROLOGY MAP

CHESNUT 27K-HZ PAD

SECTION: 27
TOWNSHIP: 5N
RANGE: 64W



- ⑦ DITCH 81' & 553' E, 708' NE, 566' & 578' SW, 884' NW
- ⑧ CANAL 350' SW
- ⑨ POND 486' SW, 622' W
- ⑩ LOW AREA 421', 535' & 569' NW, 646', 646' & 701' NE, 1187' NE

NEAREST DOWN GRADIENT WATER FEATURE: DITCH 81' E

DATE: rev6/19/2014
PROJECT#: 2014004