

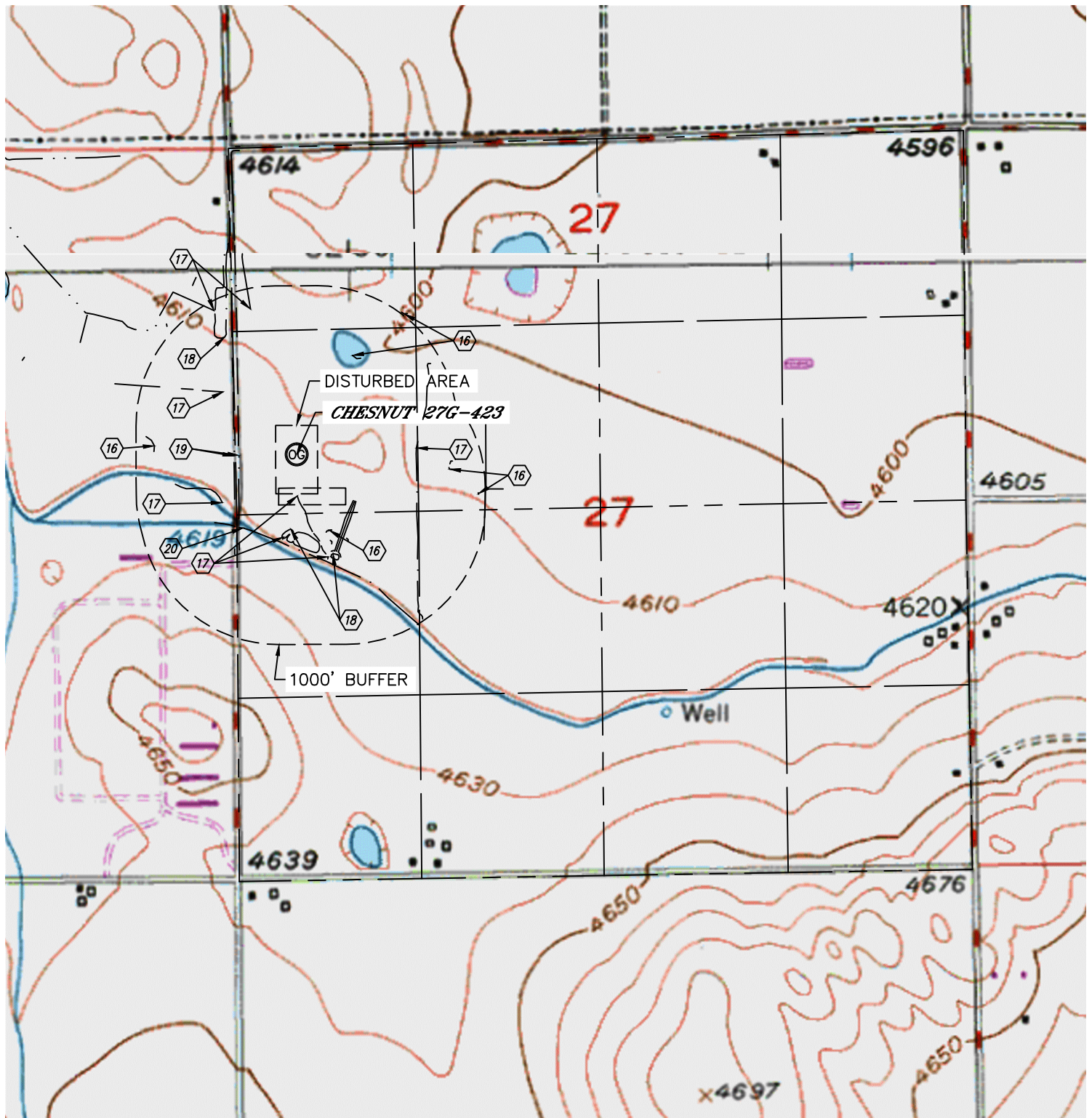


Lat40°, Inc. 1635 Foxtrail Drive, Suite 325 Loveland, CO 970-776-3321

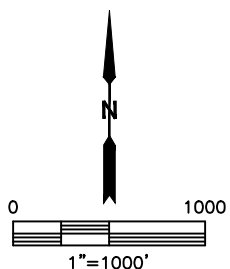
HYDROLOGY MAP

CHESNUT 27G-HZ PAD

SECTION: 27
TOWNSHIP: 5N
RANGE: 64W



- (16) LOW AREA 590' SE, 1100 & 1330 SE, 1021' W, 811 & 1268' NE
- (17) DITCH 296' S, 599' & 635' SW, 692' NW, 767' SE, 1094 & 1190 NW, 859' E
- (18) POND 536' S, 756' SE, 987' NW
- (19) BARROW DITCH 415' & 449' W
- (20) CANAL 625' SW



NEAREST DOWN GRADIENT WATER FEATURE: BARROW DITCH 415' W

DATE: rev6/18/2014
PROJECT#: 2014004