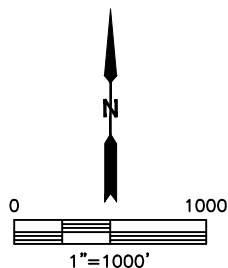
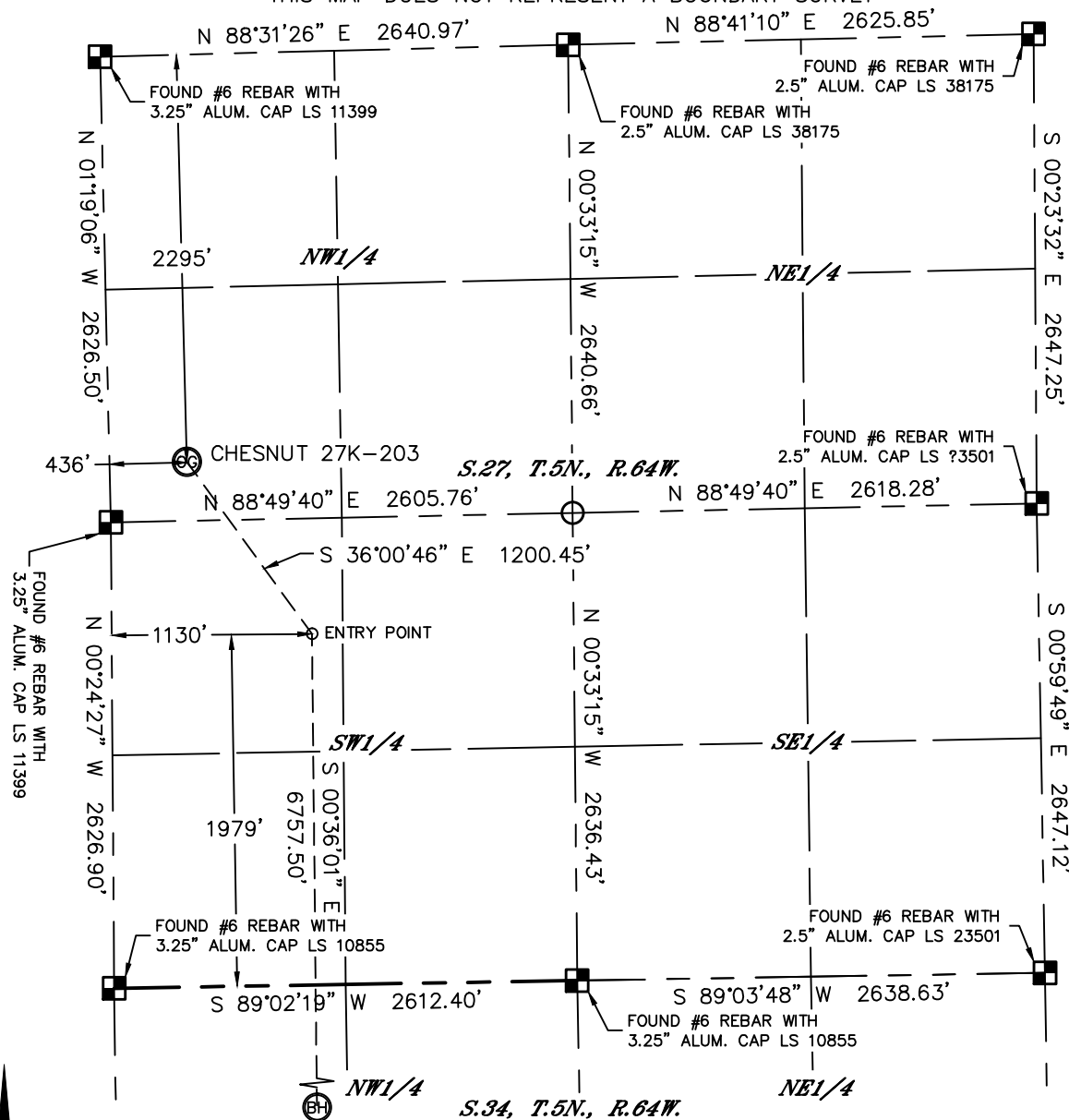


# WELL LOCATION CERTIFICATE

THIS MAP DOES NOT REPRESENT A BOUNDARY SURVEY



SECTION: 27  
TOWNSHIP: 5N  
RANGE: 64W



In accordance with a request from Jeff Dillingham with PDC ENERGY Lat40, Inc. has determined the surface location of the CHESNUT 27K-203 to be 2295' from the NORTH line and 436' from the WEST line as measured at right angles from the section lines of Section 27, Township 5 North, Range 64 West and the bottom hole to be 500' from the SOUTH line and 1120' from the WEST line as measured at right angles from the section lines of Section 34, Township 5 North, Range 64 West of the Sixth Principal Meridian, County of Weld, State of Colorado.

I hereby state that this Well Location Certificate was prepared by me, or under my direct supervision, that the fieldwork was completed on 6/17/2014, for and on behalf of PDC ENERGY. That this is not a Land Survey Plat or an Improvement Survey Plat, and that it is not to be relied upon for establishment of fence, building, or other future improvement lines.

NOTE:

- 1) Bearings shown are Grid Bearings of the Colorado State Plane Coordinate System, North Zone, North American Datum 1983. The linear dimensions as contained herein are based upon the "U.S. Survey Foot."
- 2) Ground elevations are based on an observed GPS elevation (NAVD 1988 DATUM).
- 3) IMPROVEMENTS: See LOCATION DRAWING for all visible improvements within 500' of disturbed area.
- 4) SURFACE USE: RANGELAND
- 5) INSTRUMENT OPERATOR: BRIAN ROTTINGHAUS
- 6) NEAREST CULTURAL ITEMS:
- BUILDING ±581' N  
BUILDING UNIT (VACANT) ±614' SW  
HIGH OCCUPANCY BUILDING UNIT +5280'  
DESIGNATED OUTSIDE ACTIVITY AREA +5280'  
PUBLIC ROAD (CR 55) ±419' W  
ABOVE GROUND UTILITY ±402' W  
RAILROAD ±5076' N  
PROPERTY LINE ±436' N
- LEGEND
-  = ALIQUOT MONUMENT
-  = CALCULATED POSITION

SURFACE LOCATION

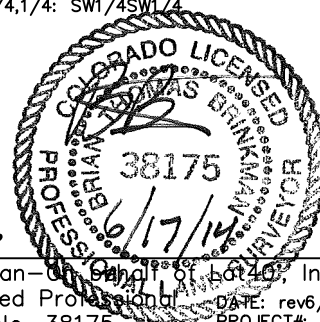
LAT: 40.37117°N  
LONG: 104.54360°W  
PDOP: 2.7  
ELEV: 4619'  
1/4.1/4: SW1/4NW1/4

## ENTRY POINT

LAT: 40.36848°N  
LONG: 104.54111°W  
1/4, 1/4: NW1/4SW1/4

BOTTOM HOLE

LAT: 40.34994°N  
LONG: 104.54111°W  
1/4, 1/4: SW1/4SW1/4



*SHEET 1 OF 2*

Brian T. Brinkman—On behalf of Plaintiff, Inc.

Colorado Licensed Professional Land Surveyor No. 38175 DATE: rev6/17/2014 PROJECT#: 2014004



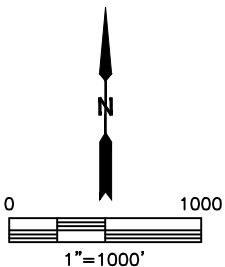
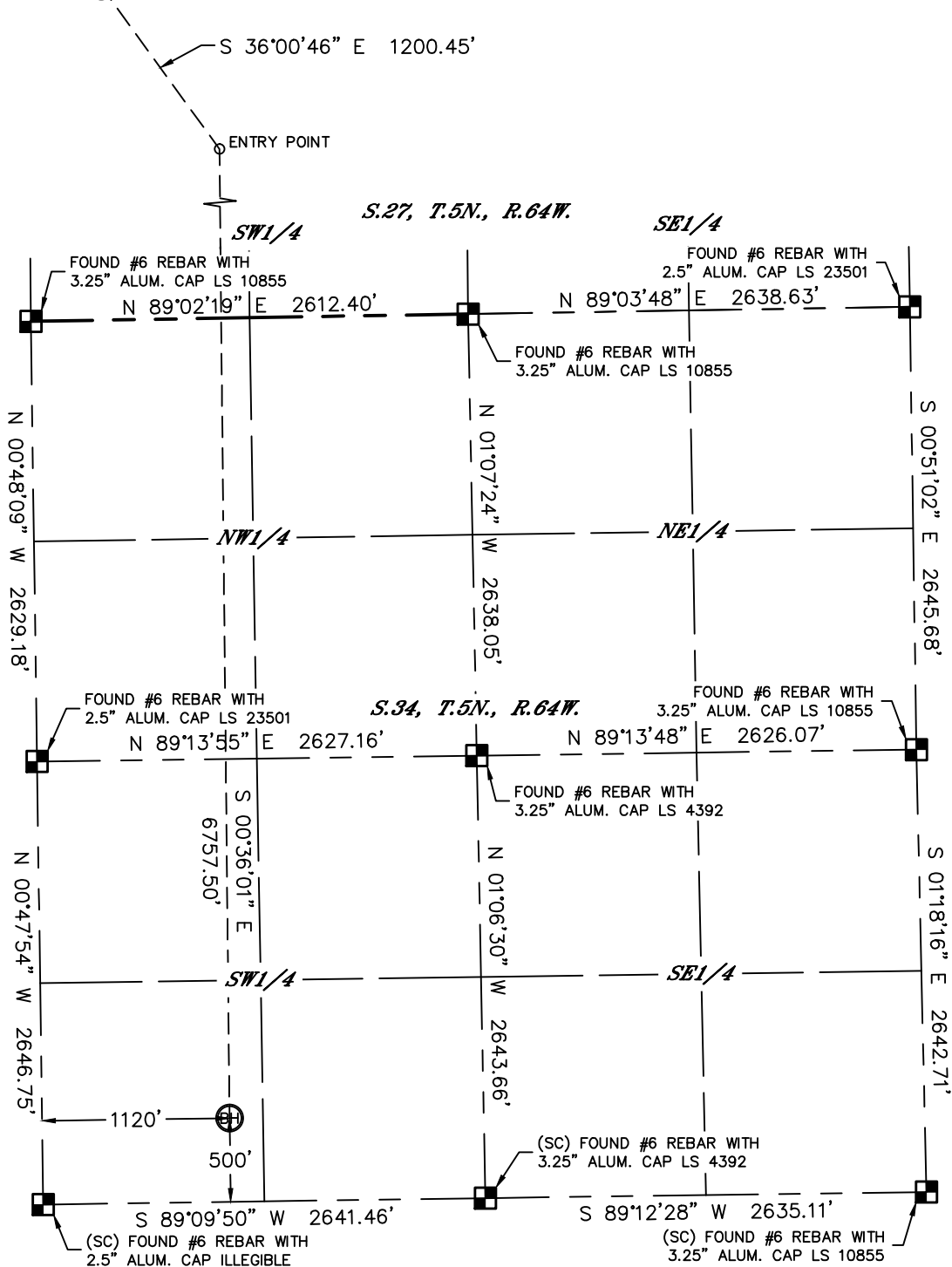
Lat40°, Inc. 1635 Foxtrail Drive, Suite 325 Loveland, CO 970-776-3321

# WELL LOCATION CERTIFICATE

SECTION: 27  
TOWNSHIP: 5N  
RANGE: 64W

THIS MAP DOES NOT REPRESENT A BOUNDARY SURVEY

CHESNUT 27K-203

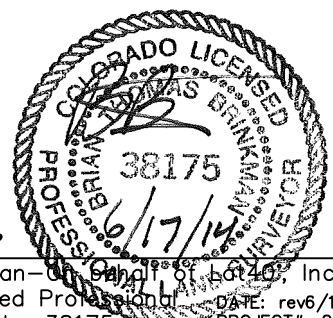


## LEGEND

- = ALIQUOT MONUMENT AS DESCRIBED
- = CALCULATED POSITION

## SHEET 2 OF 2

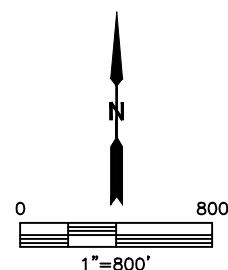
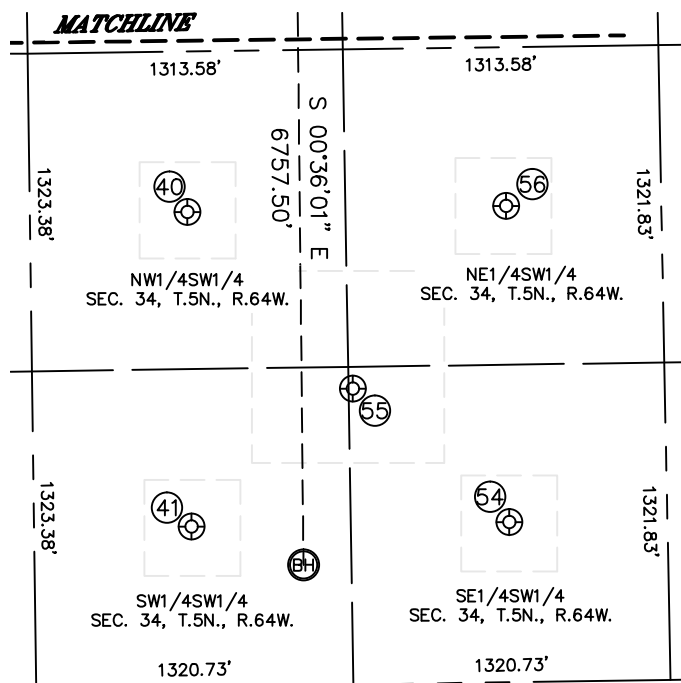
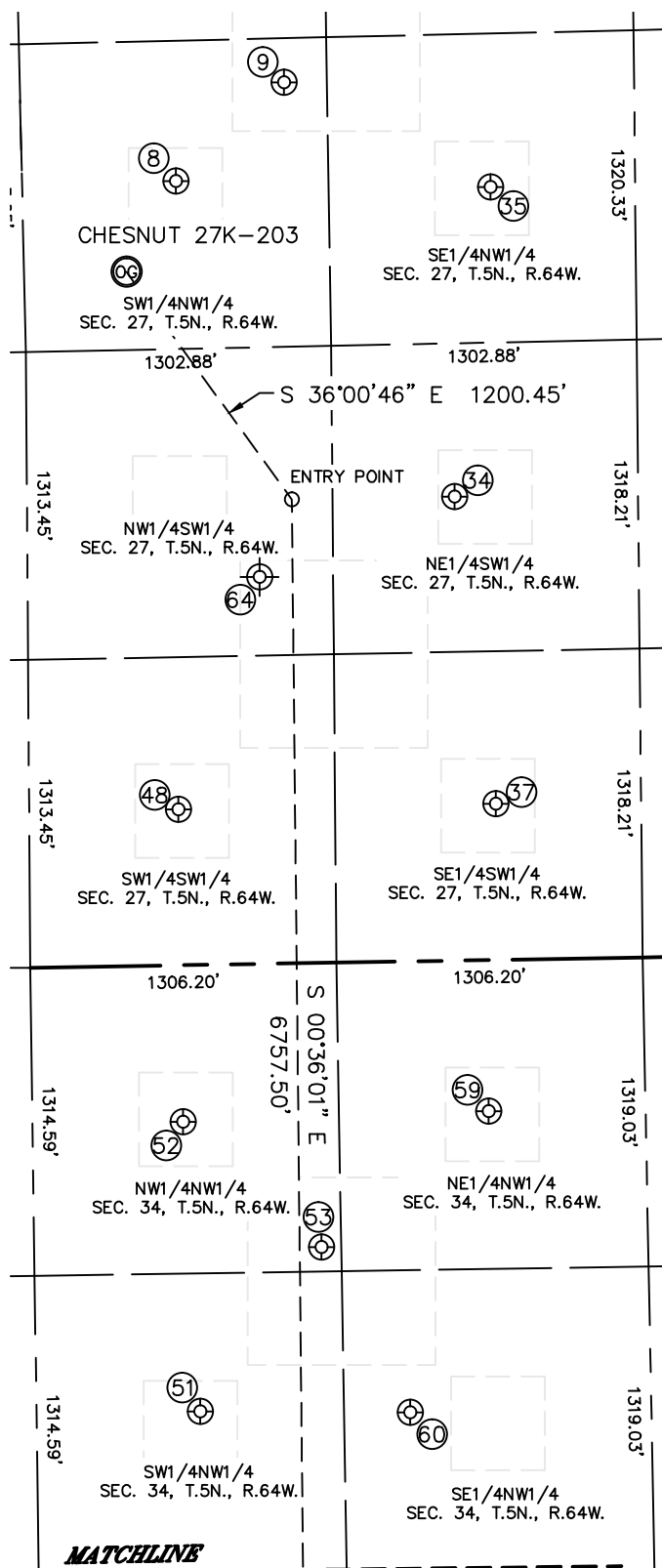
Brian T. Brinkman—  
Colorado Licensed Professional Land Surveyor No. 38175  
DATE: rev6/17/2014  
PROJECT#: 2014004



# SITE SKETCH

CHESNUT 27K-203

SECTION: 27  
TOWNSHIP: 5N  
RANGE: 64W





Lat40°, Inc. 1635 Foxtrail Drive, Suite 325 Loveland, CO 970-776-3321

# SITE SKETCH

CHESNUT 27K-203

SECTION: 27  
TOWNSHIP: 5N  
RANGE: 64W

WELL NO.	WELL NAME	SHL FOOTAGE				SHL LAT°	SHL LONG°	PDOP	ELEV (FT.)	1/4/1/4
8	WHITE 27-6	1913	FNL	656	FWL	40.37222	-104.54283	1.8	4613	SWNW
9	WHITE 5	1505	FNL	1127	FWL	40.37336	-104.54116	2.0	4608	SWNW
34	WHITE 27-7	1979	FSL	1825	FWL	40.36849	-104.53861	1.9	4613	NESW
35	WHITE 27-3	1973	FNL	1998	FWL	40.37212	-104.53801	2.0	4601	SENW
37	WHITE 27-4	666	FSL	1990	FWL	40.36489	-104.53804	3.0	4627	SESW
40	BAILEY 34-1	1977	FSL	656	FWL	40.35399	-104.54279	1.9	4656	NWSW
41	BAILEY 14-34	667	FSL	655	FWL	40.35039	-104.54278	2.4	4668	SWSW
48	WHITE 27-8	665	FSL	636	FWL	40.36487	-104.54289	2.2	4634	SWSW
51	WHITE 12-34	1905	FNL	698	FWL	40.35782	-104.54266	2.0	4650	SWNW
52	WHITE 34-2	669	FNL	643	FWL	40.36121	-104.54287	2.1	4642	NWNW
53	WHITE 1-1	1212	FNL	1225	FWL	40.35972	-104.54078	2.1	4643	NWNW
54	BAILEY 24-34	666	FSL	1978	FWL	40.35040	-104.53804	1.7	4655	SESW
55	BAILEY 5	1232	FSL	1335	FWL	40.35195	-104.54035	1.6	4655	SESW
56	BAILEY No. 34-2	1983	FSL	1983	FWL	40.35401	-104.53803	1.5	4644	NESW
59	BETTALE 34-1	644	FNL	1947	FWL	40.36130	-104.53819	1.6	4648	NENW
60	WHITE 34-1	1924	FNL	1595	FWL	40.35778	-104.53944	2.7	4643	SWNW
64	WHITE 27-1	1650	FSL	990	FWL	40.36750	-104.54167	N/A	4637	SWSW

NOTE: THE ABANDONED WELL DATA SHOWN IN RED ABOVE WAS OBTAINED FROM COGCC SCOUT CARDS.