

Synergy Resources

Well Name: **SRC Wiedeman A-5-3CHZ**

Surface Location: SRC Wiedeman Pad Sec.5-T5N-R66W
North American Datum 1983 , US State Plane 1983 , Colorado Northern Zone

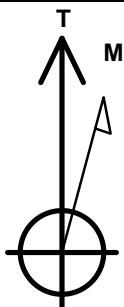
Ground Elevation: 4783.0

+N/-S	+E/-W	Northing	Easting	Latitude	Longitude	Slot
0.0	0.0	1401447.38	3194380.75	40.433274	-104.801720	

RKB -13' WELL @ 4796.0ft (RKB -13')

WELLBORE TARGET DETAILS

Name	TVD	+N/-S	+E/-W	Shape
SHL 1423'FNL & 2438'FEL, Sec. 5		0.0	0.0	Point
BHL 1311'FNL & 2143'FWL, Sec.3	7223.0	183.1	9940.2	Point



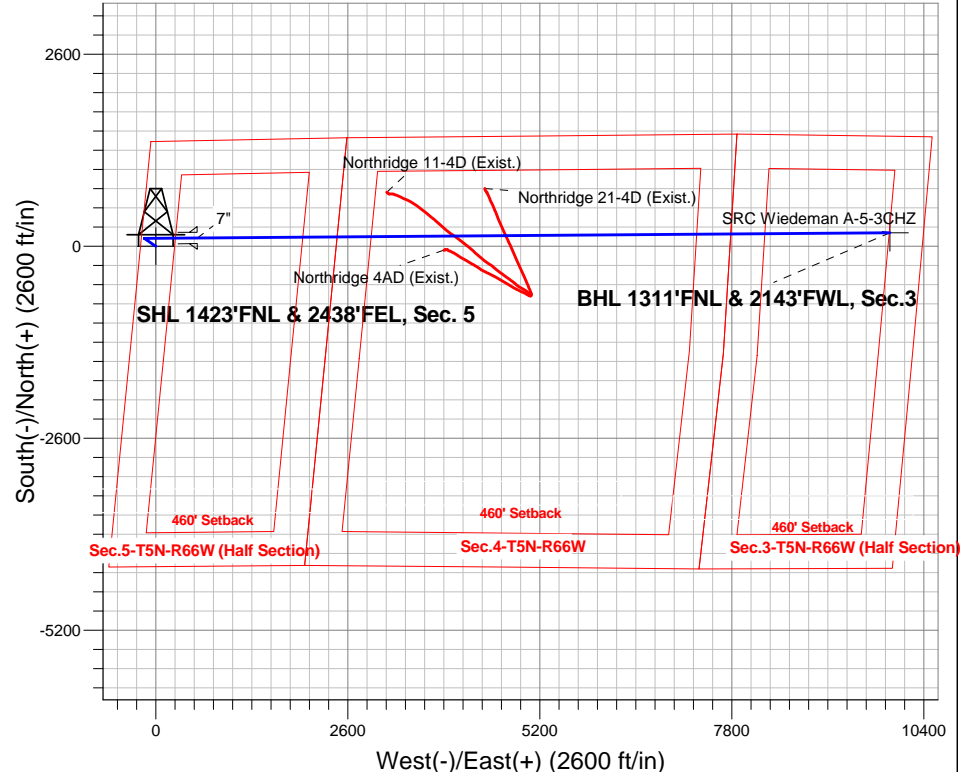
Azimuths to True North
Magnetic North: 8.48°

Magnetic Field
Strength: 52826.5snT
Dip Angle: 66.97°
Date: 6/24/2014
Model: IGRF2010

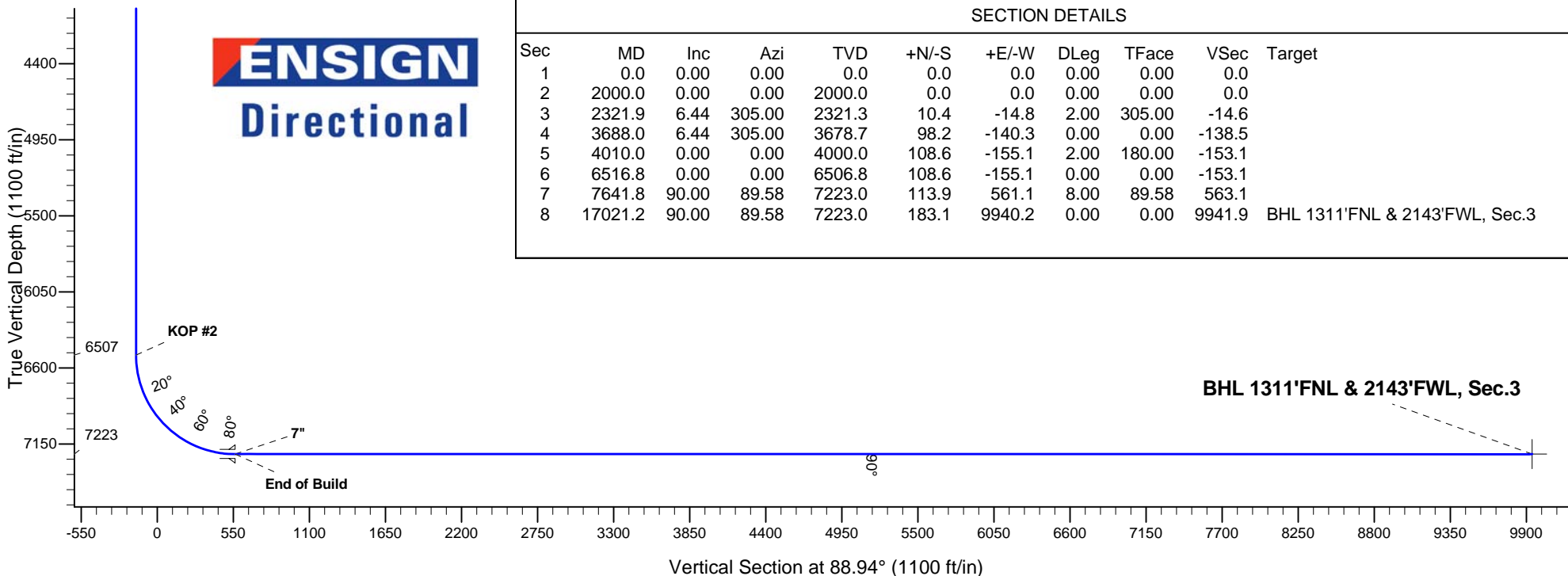
SRC Wiedeman Pad Sec.5-T5N-R66W
SRC Wiedeman A-5-3CHZ
Plan #1 (6-24-14)
14:58, June 25 2014

ANNOTATIONS

TVD	MD	Annotation
2000.0	2000.0	KOP #1
6506.8	6516.8	KOP #2
7223.0	7641.8	End of Build



ENSIGN
Directional



SECTION DETAILS

Sec	MD	Inc	Azi	TVD	+N/-S	+E/-W	DLeg	TFace	VSoc	Target
1	0.0	0.00	0.00	0.0	0.0	0.0	0.00	0.00	0.0	
2	2000.0	0.00	0.00	2000.0	0.0	0.0	0.00	0.00	0.0	
3	2321.9	6.44	305.00	2321.3	10.4	-14.8	2.00	305.00	-14.6	
4	3688.0	6.44	305.00	3678.7	98.2	-140.3	0.00	0.00	-138.5	
5	4010.0	0.00	0.00	4000.0	108.6	-155.1	2.00	180.00	-153.1	
6	6516.8	0.00	0.00	6506.8	108.6	-155.1	0.00	0.00	-153.1	
7	7641.8	90.00	89.58	7223.0	113.9	561.1	8.00	89.58	563.1	
8	17021.2	90.00	89.58	7223.0	183.1	9940.2	0.00	0.00	9941.9	BHL 1311'FNL & 2143'FWL, Sec.3



Synergy Resources

Sec.5-T5N-R66W

SRC Wiedeman Pad Sec.5-T5N-R66W

SRC Wiedeman A-5-3CHZ

Wellbore #1

Plan: Plan #1 (6-24-14)

Standard Planning Report

25 June, 2014



Database:	Landmark	Local Co-ordinate Reference:	Well SRC Wiedeman A-5-3CHZ
Company:	Synergy Resources	TVD Reference:	WELL @ 4796.0ft (RKB -13')
Project:	Sec.5-T5N-R66W	MD Reference:	WELL @ 4796.0ft (RKB -13')
Site:	SRC Wiedeman Pad Sec.5-T5N-R66W	North Reference:	True
Well:	SRC Wiedeman A-5-3CHZ	Survey Calculation Method:	Minimum Curvature
Wellbore:	Wellbore #1		
Design:	Plan #1 (6-24-14)		

Project	Sec.5-T5N-R66W		
Map System:	US State Plane 1983	System Datum:	Mean Sea Level
Geo Datum:	North American Datum 1983		Using Well Reference Point
Map Zone:	Colorado Northern Zone		Using geodetic scale factor

Site						SRC Wiedeman Pad Sec.5-T5N-R66W											
Site Position:						Northing:			1,401,391.96 ft			Latitude:			40.433123		
From:			Lat/Long			Easting:			3,194,327.74 ft			Longitude:			-104.801912		
Position Uncertainty:			0.0 ft			Slot Radius:			"			Grid Convergence:			0.45 °		

Well	SRC Wiedeman A-5-3CHZ					
Well Position	+N-S	55.0 ft	Northing:	1,401,447.38 ft	Latitude:	40.433274
	+E-W	53.5 ft	Easting:	3,194,380.75 ft	Longitude:	-104.801720
Position Uncertainty		0.0 ft	Wellhead Elevation:	ft	Ground Level:	4,783.0 ft

Wellbore	Wellbore #1				
Magnetics	Model Name	Sample Date	Declination (°)	Dip Angle (°)	Field Strength (nT)
	IGRF2010	6/24/2014	8.48	66.97	52,826

Design	Plan #1 (6-24-14)			
Audit Notes:				
Version:	Phase:	PROTOTYPE	Tie On Depth:	0.0
Vertical Section:	Depth From (TVD) (ft)	+N/-S (ft)	+E/-W (ft)	Direction (°)
	0.0	0.0	0.0	88.94

Plan Sections										
Measured Depth (ft)	Inclination (°)	Azimuth (°)	Vertical Depth (ft)	+N/-S (ft)	+E/-W (ft)	Dogleg Rate (°/100ft)	Build Rate (°/100ft)	Turn Rate (°/100ft)	TFO (°)	Target
0.0	0.00	0.00	0.0	0.0	0.0	0.00	0.00	0.00	0.00	
2,000.0	0.00	0.00	2,000.0	0.0	0.0	0.00	0.00	0.00	0.00	
2,321.9	6.44	305.00	2,321.3	10.4	-14.8	2.00	2.00	0.00	305.00	
3,688.0	6.44	305.00	3,678.7	98.2	-140.3	0.00	0.00	0.00	0.00	
4,010.0	0.00	0.00	4,000.0	108.6	-155.1	2.00	-2.00	0.00	180.00	
6,516.8	0.00	0.00	6,506.8	108.6	-155.1	0.00	0.00	0.00	0.00	
7,641.8	90.00	89.58	7,223.0	113.9	561.1	8.00	8.00	0.00	89.58	
17,021.2	90.00	89.58	7,223.0	183.1	9,940.2	0.00	0.00	0.00	0.00	BHL 1311'FNL & 21

Database:	Landmark	Local Co-ordinate Reference:	Well SRC Wiedeman A-5-3CHZ
Company:	Synergy Resources	TVD Reference:	WELL @ 4796.0ft (RKB -13')
Project:	Sec.5-T5N-R66W	MD Reference:	WELL @ 4796.0ft (RKB -13')
Site:	SRC Wiedeman Pad Sec.5-T5N-R66W	North Reference:	True
Well:	SRC Wiedeman A-5-3CHZ	Survey Calculation Method:	Minimum Curvature
Wellbore:	Wellbore #1		
Design:	Plan #1 (6-24-14)		

Planned Survey									
Measured Depth (ft)	Inclination (°)	Azimuth (°)	Vertical Depth (ft)	+N/-S (ft)	+E/-W (ft)	Vertical Section (ft)	Dogleg Rate (°/100ft)	Build Rate (°/100ft)	Turn Rate (°/100ft)
0.0	0.00	0.00	0.0	0.0	0.0	0.0	0.00	0.00	0.00
1.0	0.00	0.00	1.0	0.0	0.0	0.0	0.00	0.00	0.00
SHL 1423'FNL & 2438'FEL, Sec. 5									
100.0	0.00	0.00	100.0	0.0	0.0	0.0	0.00	0.00	0.00
200.0	0.00	0.00	200.0	0.0	0.0	0.0	0.00	0.00	0.00
300.0	0.00	0.00	300.0	0.0	0.0	0.0	0.00	0.00	0.00
400.0	0.00	0.00	400.0	0.0	0.0	0.0	0.00	0.00	0.00
500.0	0.00	0.00	500.0	0.0	0.0	0.0	0.00	0.00	0.00
600.0	0.00	0.00	600.0	0.0	0.0	0.0	0.00	0.00	0.00
700.0	0.00	0.00	700.0	0.0	0.0	0.0	0.00	0.00	0.00
800.0	0.00	0.00	800.0	0.0	0.0	0.0	0.00	0.00	0.00
900.0	0.00	0.00	900.0	0.0	0.0	0.0	0.00	0.00	0.00
1,000.0	0.00	0.00	1,000.0	0.0	0.0	0.0	0.00	0.00	0.00
1,100.0	0.00	0.00	1,100.0	0.0	0.0	0.0	0.00	0.00	0.00
1,200.0	0.00	0.00	1,200.0	0.0	0.0	0.0	0.00	0.00	0.00
1,300.0	0.00	0.00	1,300.0	0.0	0.0	0.0	0.00	0.00	0.00
1,400.0	0.00	0.00	1,400.0	0.0	0.0	0.0	0.00	0.00	0.00
1,500.0	0.00	0.00	1,500.0	0.0	0.0	0.0	0.00	0.00	0.00
1,600.0	0.00	0.00	1,600.0	0.0	0.0	0.0	0.00	0.00	0.00
1,700.0	0.00	0.00	1,700.0	0.0	0.0	0.0	0.00	0.00	0.00
1,800.0	0.00	0.00	1,800.0	0.0	0.0	0.0	0.00	0.00	0.00
1,900.0	0.00	0.00	1,900.0	0.0	0.0	0.0	0.00	0.00	0.00
2,000.0	0.00	0.00	2,000.0	0.0	0.0	0.0	0.00	0.00	0.00
KOP #1									
2,100.0	2.00	305.00	2,100.0	1.0	-1.4	-1.4	2.00	2.00	0.00
2,200.0	4.00	305.00	2,199.8	4.0	-5.7	-5.6	2.00	2.00	0.00
2,300.0	6.00	305.00	2,299.5	9.0	-12.9	-12.7	2.00	2.00	0.00
2,321.9	6.44	305.00	2,321.3	10.4	-14.8	-14.6	2.00	2.00	0.00
2,400.0	6.44	305.00	2,398.8	15.4	-22.0	-21.7	0.00	0.00	0.00
2,500.0	6.44	305.00	2,498.2	21.8	-31.2	-30.8	0.00	0.00	0.00
2,600.0	6.44	305.00	2,597.6	28.2	-40.3	-39.8	0.00	0.00	0.00
2,700.0	6.44	305.00	2,696.9	34.7	-49.5	-48.9	0.00	0.00	0.00
2,800.0	6.44	305.00	2,796.3	41.1	-58.7	-58.0	0.00	0.00	0.00
2,900.0	6.44	305.00	2,895.7	47.5	-67.9	-67.0	0.00	0.00	0.00
3,000.0	6.44	305.00	2,995.0	54.0	-77.1	-76.1	0.00	0.00	0.00
3,100.0	6.44	305.00	3,094.4	60.4	-86.3	-85.2	0.00	0.00	0.00
3,200.0	6.44	305.00	3,193.8	66.8	-95.5	-94.2	0.00	0.00	0.00
3,300.0	6.44	305.00	3,293.2	73.3	-104.7	-103.3	0.00	0.00	0.00
3,400.0	6.44	305.00	3,392.5	79.7	-113.8	-112.4	0.00	0.00	0.00
3,500.0	6.44	305.00	3,491.9	86.1	-123.0	-121.4	0.00	0.00	0.00
3,600.0	6.44	305.00	3,591.3	92.6	-132.2	-130.5	0.00	0.00	0.00
3,688.0	6.44	305.00	3,678.7	98.2	-140.3	-138.5	0.00	0.00	0.00
3,700.0	6.20	305.00	3,690.6	99.0	-141.4	-139.5	2.00	-2.00	0.00
3,800.0	4.20	305.00	3,790.2	104.2	-148.8	-146.9	2.00	-2.00	0.00
3,900.0	2.20	305.00	3,890.1	107.4	-153.4	-151.4	2.00	-2.00	0.00
4,000.0	0.20	305.00	3,990.0	108.6	-155.1	-153.1	2.00	-2.00	0.00
4,010.0	0.00	0.00	4,000.0	108.6	-155.1	-153.1	2.00	-2.00	0.00
4,100.0	0.00	0.00	4,090.0	108.6	-155.1	-153.1	0.00	0.00	0.00
4,200.0	0.00	0.00	4,190.0	108.6	-155.1	-153.1	0.00	0.00	0.00
4,300.0	0.00	0.00	4,290.0	108.6	-155.1	-153.1	0.00	0.00	0.00
4,400.0	0.00	0.00	4,390.0	108.6	-155.1	-153.1	0.00	0.00	0.00
4,500.0	0.00	0.00	4,490.0	108.6	-155.1	-153.1	0.00	0.00	0.00
4,600.0	0.00	0.00	4,590.0	108.6	-155.1	-153.1	0.00	0.00	0.00
4,700.0	0.00	0.00	4,690.0	108.6	-155.1	-153.1	0.00	0.00	0.00

Database:	Landmark	Local Co-ordinate Reference:	Well SRC Wiedeman A-5-3CHZ
Company:	Synergy Resources	TVD Reference:	WELL @ 4796.0ft (RKB -13')
Project:	Sec.5-T5N-R66W	MD Reference:	WELL @ 4796.0ft (RKB -13')
Site:	SRC Wiedeman Pad Sec.5-T5N-R66W	North Reference:	True
Well:	SRC Wiedeman A-5-3CHZ	Survey Calculation Method:	Minimum Curvature
Wellbore:	Wellbore #1		
Design:	Plan #1 (6-24-14)		

Planned Survey									
Measured Depth (ft)	Inclination (°)	Azimuth (°)	Vertical Depth (ft)	+N/-S (ft)	+E/-W (ft)	Vertical Section (ft)	Dogleg Rate (°/100ft)	Build Rate (°/100ft)	Turn Rate (°/100ft)
4,800.0	0.00	0.00	4,790.0	108.6	-155.1	-153.1	0.00	0.00	0.00
4,900.0	0.00	0.00	4,890.0	108.6	-155.1	-153.1	0.00	0.00	0.00
5,000.0	0.00	0.00	4,990.0	108.6	-155.1	-153.1	0.00	0.00	0.00
5,100.0	0.00	0.00	5,090.0	108.6	-155.1	-153.1	0.00	0.00	0.00
5,200.0	0.00	0.00	5,190.0	108.6	-155.1	-153.1	0.00	0.00	0.00
5,300.0	0.00	0.00	5,290.0	108.6	-155.1	-153.1	0.00	0.00	0.00
5,400.0	0.00	0.00	5,390.0	108.6	-155.1	-153.1	0.00	0.00	0.00
5,500.0	0.00	0.00	5,490.0	108.6	-155.1	-153.1	0.00	0.00	0.00
5,600.0	0.00	0.00	5,590.0	108.6	-155.1	-153.1	0.00	0.00	0.00
5,700.0	0.00	0.00	5,690.0	108.6	-155.1	-153.1	0.00	0.00	0.00
5,800.0	0.00	0.00	5,790.0	108.6	-155.1	-153.1	0.00	0.00	0.00
5,900.0	0.00	0.00	5,890.0	108.6	-155.1	-153.1	0.00	0.00	0.00
6,000.0	0.00	0.00	5,990.0	108.6	-155.1	-153.1	0.00	0.00	0.00
6,100.0	0.00	0.00	6,090.0	108.6	-155.1	-153.1	0.00	0.00	0.00
6,200.0	0.00	0.00	6,190.0	108.6	-155.1	-153.1	0.00	0.00	0.00
6,300.0	0.00	0.00	6,290.0	108.6	-155.1	-153.1	0.00	0.00	0.00
6,400.0	0.00	0.00	6,390.0	108.6	-155.1	-153.1	0.00	0.00	0.00
6,500.0	0.00	0.00	6,490.0	108.6	-155.1	-153.1	0.00	0.00	0.00
6,516.8	0.00	0.00	6,506.8	108.6	-155.1	-153.1	0.00	0.00	0.00
KOP #2									
6,600.0	6.66	89.58	6,589.8	108.6	-150.3	-148.2	8.00	8.00	0.00
6,700.0	14.66	89.58	6,688.0	108.8	-131.8	-129.8	8.00	8.00	0.00
6,800.0	22.66	89.58	6,782.7	109.0	-99.8	-97.8	8.00	8.00	0.00
6,900.0	30.66	89.58	6,872.0	109.3	-55.0	-53.0	8.00	8.00	0.00
7,000.0	38.66	89.58	6,954.2	109.8	1.8	3.8	8.00	8.00	0.00
7,100.0	46.66	89.58	7,027.7	110.3	69.5	71.5	8.00	8.00	0.00
7,200.0	54.66	89.58	7,091.0	110.8	146.8	148.8	8.00	8.00	0.00
7,300.0	62.66	89.58	7,143.0	111.5	232.1	234.2	8.00	8.00	0.00
7,400.0	70.66	89.58	7,182.6	112.1	323.9	325.9	8.00	8.00	0.00
7,500.0	78.66	89.58	7,209.0	112.8	420.2	422.2	8.00	8.00	0.00
7,600.0	86.66	89.58	7,221.8	113.6	519.3	521.3	8.00	8.00	0.00
7,641.8	90.00	89.58	7,223.0	113.9	561.1	563.1	8.00	8.00	0.00
End of Build - 7"									
7,700.0	90.00	89.58	7,223.0	114.3	619.3	621.3	0.00	0.00	0.00
7,800.0	90.00	89.58	7,223.0	115.0	719.3	721.3	0.00	0.00	0.00
7,900.0	90.00	89.58	7,223.0	115.8	819.3	821.3	0.00	0.00	0.00
8,000.0	90.00	89.58	7,223.0	116.5	919.3	921.3	0.00	0.00	0.00
8,100.0	90.00	89.58	7,223.0	117.3	1,019.3	1,021.3	0.00	0.00	0.00
8,200.0	90.00	89.58	7,223.0	118.0	1,119.3	1,121.3	0.00	0.00	0.00
8,300.0	90.00	89.58	7,223.0	118.7	1,219.3	1,221.3	0.00	0.00	0.00
8,400.0	90.00	89.58	7,223.0	119.5	1,319.3	1,321.3	0.00	0.00	0.00
8,500.0	90.00	89.58	7,223.0	120.2	1,419.3	1,421.3	0.00	0.00	0.00
8,600.0	90.00	89.58	7,223.0	120.9	1,519.3	1,521.2	0.00	0.00	0.00
8,700.0	90.00	89.58	7,223.0	121.7	1,619.3	1,621.2	0.00	0.00	0.00
8,800.0	90.00	89.58	7,223.0	122.4	1,719.3	1,721.2	0.00	0.00	0.00
8,900.0	90.00	89.58	7,223.0	123.2	1,819.3	1,821.2	0.00	0.00	0.00
9,000.0	90.00	89.58	7,223.0	123.9	1,919.3	1,921.2	0.00	0.00	0.00
9,100.0	90.00	89.58	7,223.0	124.6	2,019.3	2,021.2	0.00	0.00	0.00
9,200.0	90.00	89.58	7,223.0	125.4	2,119.3	2,121.2	0.00	0.00	0.00
9,300.0	90.00	89.58	7,223.0	126.1	2,219.3	2,221.2	0.00	0.00	0.00
9,400.0	90.00	89.58	7,223.0	126.9	2,319.3	2,321.2	0.00	0.00	0.00
9,500.0	90.00	89.58	7,223.0	127.6	2,419.3	2,421.2	0.00	0.00	0.00
9,600.0	90.00	89.58	7,223.0	128.3	2,519.3	2,521.2	0.00	0.00	0.00
9,700.0	90.00	89.58	7,223.0	129.1	2,619.2	2,621.2	0.00	0.00	0.00

Database:	Landmark	Local Co-ordinate Reference:	Well SRC Wiedeman A-5-3CHZ
Company:	Synergy Resources	TVD Reference:	WELL @ 4796.0ft (RKB -13')
Project:	Sec.5-T5N-R66W	MD Reference:	WELL @ 4796.0ft (RKB -13')
Site:	SRC Wiedeman Pad Sec.5-T5N-R66W	North Reference:	True
Well:	SRC Wiedeman A-5-3CHZ	Survey Calculation Method:	Minimum Curvature
Wellbore:	Wellbore #1		
Design:	Plan #1 (6-24-14)		

Planned Survey									
Measured Depth (ft)	Inclination (°)	Azimuth (°)	Vertical Depth (ft)	+N/-S (ft)	+E/-W (ft)	Vertical Section (ft)	Dogleg Rate (°/100ft)	Build Rate (°/100ft)	Turn Rate (°/100ft)
9,800.0	90.00	89.58	7,223.0	129.8	2,719.2	2,721.2	0.00	0.00	0.00
9,900.0	90.00	89.58	7,223.0	130.5	2,819.2	2,821.2	0.00	0.00	0.00
10,000.0	90.00	89.58	7,223.0	131.3	2,919.2	2,921.2	0.00	0.00	0.00
10,100.0	90.00	89.58	7,223.0	132.0	3,019.2	3,021.2	0.00	0.00	0.00
10,200.0	90.00	89.58	7,223.0	132.8	3,119.2	3,121.2	0.00	0.00	0.00
10,300.0	90.00	89.58	7,223.0	133.5	3,219.2	3,221.1	0.00	0.00	0.00
10,400.0	90.00	89.58	7,223.0	134.2	3,319.2	3,321.1	0.00	0.00	0.00
10,500.0	90.00	89.58	7,223.0	135.0	3,419.2	3,421.1	0.00	0.00	0.00
10,600.0	90.00	89.58	7,223.0	135.7	3,519.2	3,521.1	0.00	0.00	0.00
10,700.0	90.00	89.58	7,223.0	136.4	3,619.2	3,621.1	0.00	0.00	0.00
10,800.0	90.00	89.58	7,223.0	137.2	3,719.2	3,721.1	0.00	0.00	0.00
10,900.0	90.00	89.58	7,223.0	137.9	3,819.2	3,821.1	0.00	0.00	0.00
11,000.0	90.00	89.58	7,223.0	138.7	3,919.2	3,921.1	0.00	0.00	0.00
11,100.0	90.00	89.58	7,223.0	139.4	4,019.2	4,021.1	0.00	0.00	0.00
11,200.0	90.00	89.58	7,223.0	140.1	4,119.2	4,121.1	0.00	0.00	0.00
11,300.0	90.00	89.58	7,223.0	140.9	4,219.2	4,221.1	0.00	0.00	0.00
11,400.0	90.00	89.58	7,223.0	141.6	4,319.2	4,321.1	0.00	0.00	0.00
11,500.0	90.00	89.58	7,223.0	142.3	4,419.2	4,421.1	0.00	0.00	0.00
11,600.0	90.00	89.58	7,223.0	143.1	4,519.2	4,521.1	0.00	0.00	0.00
11,700.0	90.00	89.58	7,223.0	143.8	4,619.2	4,621.1	0.00	0.00	0.00
11,800.0	90.00	89.58	7,223.0	144.6	4,719.2	4,721.1	0.00	0.00	0.00
11,900.0	90.00	89.58	7,223.0	145.3	4,819.2	4,821.0	0.00	0.00	0.00
12,000.0	90.00	89.58	7,223.0	146.0	4,919.2	4,921.0	0.00	0.00	0.00
12,100.0	90.00	89.58	7,223.0	146.8	5,019.2	5,021.0	0.00	0.00	0.00
12,200.0	90.00	89.58	7,223.0	147.5	5,119.2	5,121.0	0.00	0.00	0.00
12,300.0	90.00	89.58	7,223.0	148.2	5,219.2	5,221.0	0.00	0.00	0.00
12,400.0	90.00	89.58	7,223.0	149.0	5,319.2	5,321.0	0.00	0.00	0.00
12,500.0	90.00	89.58	7,223.0	149.7	5,419.2	5,421.0	0.00	0.00	0.00
12,600.0	90.00	89.58	7,223.0	150.5	5,519.2	5,521.0	0.00	0.00	0.00
12,700.0	90.00	89.58	7,223.0	151.2	5,619.2	5,621.0	0.00	0.00	0.00
12,800.0	90.00	89.58	7,223.0	151.9	5,719.2	5,721.0	0.00	0.00	0.00
12,900.0	90.00	89.58	7,223.0	152.7	5,819.2	5,821.0	0.00	0.00	0.00
13,000.0	90.00	89.58	7,223.0	153.4	5,919.2	5,921.0	0.00	0.00	0.00
13,100.0	90.00	89.58	7,223.0	154.1	6,019.2	6,021.0	0.00	0.00	0.00
13,200.0	90.00	89.58	7,223.0	154.9	6,119.2	6,121.0	0.00	0.00	0.00
13,300.0	90.00	89.58	7,223.0	155.6	6,219.2	6,221.0	0.00	0.00	0.00
13,400.0	90.00	89.58	7,223.0	156.4	6,319.1	6,321.0	0.00	0.00	0.00
13,500.0	90.00	89.58	7,223.0	157.1	6,419.1	6,420.9	0.00	0.00	0.00
13,600.0	90.00	89.58	7,223.0	157.8	6,519.1	6,520.9	0.00	0.00	0.00
13,700.0	90.00	89.58	7,223.0	158.6	6,619.1	6,620.9	0.00	0.00	0.00
13,800.0	90.00	89.58	7,223.0	159.3	6,719.1	6,720.9	0.00	0.00	0.00
13,900.0	90.00	89.58	7,223.0	160.0	6,819.1	6,820.9	0.00	0.00	0.00
14,000.0	90.00	89.58	7,223.0	160.8	6,919.1	6,920.9	0.00	0.00	0.00
14,100.0	90.00	89.58	7,223.0	161.5	7,019.1	7,020.9	0.00	0.00	0.00
14,200.0	90.00	89.58	7,223.0	162.3	7,119.1	7,120.9	0.00	0.00	0.00
14,300.0	90.00	89.58	7,223.0	163.0	7,219.1	7,220.9	0.00	0.00	0.00
14,400.0	90.00	89.58	7,223.0	163.7	7,319.1	7,320.9	0.00	0.00	0.00
14,500.0	90.00	89.58	7,223.0	164.5	7,419.1	7,420.9	0.00	0.00	0.00
14,600.0	90.00	89.58	7,223.0	165.2	7,519.1	7,520.9	0.00	0.00	0.00
14,700.0	90.00	89.58	7,223.0	165.9	7,619.1	7,620.9	0.00	0.00	0.00
14,800.0	90.00	89.58	7,223.0	166.7	7,719.1	7,720.9	0.00	0.00	0.00
14,900.0	90.00	89.58	7,223.0	167.4	7,819.1	7,820.9	0.00	0.00	0.00
15,000.0	90.00	89.58	7,223.0	168.2	7,919.1	7,920.9	0.00	0.00	0.00
15,100.0	90.00	89.58	7,223.0	168.9	8,019.1	8,020.9	0.00	0.00	0.00

Database:	Landmark	Local Co-ordinate Reference:	Well SRC Wiedeman A-5-3CHZ
Company:	Synergy Resources	TVD Reference:	WELL @ 4796.0ft (RKB -13')
Project:	Sec.5-T5N-R66W	MD Reference:	WELL @ 4796.0ft (RKB -13')
Site:	SRC Wiedeman Pad Sec.5-T5N-R66W	North Reference:	True
Well:	SRC Wiedeman A-5-3CHZ	Survey Calculation Method:	Minimum Curvature
Wellbore:	Wellbore #1		
Design:	Plan #1 (6-24-14)		

Planned Survey										
Measured Depth (ft)	Inclination (°)	Azimuth (°)	Vertical Depth (ft)	+N/-S (ft)	+E/-W (ft)	Vertical Section (ft)	Dogleg Rate (°/100ft)	Build Rate (°/100ft)	Turn Rate (°/100ft)	
15,200.0	90.00	89.58	7,223.0	169.6	8,119.1	8,120.8	0.00	0.00	0.00	
15,300.0	90.00	89.58	7,223.0	170.4	8,219.1	8,220.8	0.00	0.00	0.00	
15,400.0	90.00	89.58	7,223.0	171.1	8,319.1	8,320.8	0.00	0.00	0.00	
15,500.0	90.00	89.58	7,223.0	171.9	8,419.1	8,420.8	0.00	0.00	0.00	
15,600.0	90.00	89.58	7,223.0	172.6	8,519.1	8,520.8	0.00	0.00	0.00	
15,700.0	90.00	89.58	7,223.0	173.3	8,619.1	8,620.8	0.00	0.00	0.00	
15,800.0	90.00	89.58	7,223.0	174.1	8,719.1	8,720.8	0.00	0.00	0.00	
15,900.0	90.00	89.58	7,223.0	174.8	8,819.1	8,820.8	0.00	0.00	0.00	
16,000.0	90.00	89.58	7,223.0	175.5	8,919.1	8,920.8	0.00	0.00	0.00	
16,100.0	90.00	89.58	7,223.0	176.3	9,019.1	9,020.8	0.00	0.00	0.00	
16,200.0	90.00	89.58	7,223.0	177.0	9,119.1	9,120.8	0.00	0.00	0.00	
16,300.0	90.00	89.58	7,223.0	177.8	9,219.1	9,220.8	0.00	0.00	0.00	
16,400.0	90.00	89.58	7,223.0	178.5	9,319.1	9,320.8	0.00	0.00	0.00	
16,500.0	90.00	89.58	7,223.0	179.2	9,419.1	9,420.8	0.00	0.00	0.00	
16,600.0	90.00	89.58	7,223.0	180.0	9,519.1	9,520.8	0.00	0.00	0.00	
16,700.0	90.00	89.58	7,223.0	180.7	9,619.1	9,620.8	0.00	0.00	0.00	
16,800.0	90.00	89.58	7,223.0	181.4	9,719.1	9,720.7	0.00	0.00	0.00	
16,900.0	90.00	89.58	7,223.0	182.2	9,819.1	9,820.7	0.00	0.00	0.00	
17,000.0	90.00	89.58	7,223.0	182.9	9,919.0	9,920.7	0.00	0.00	0.00	
17,021.2	90.00	89.58	7,223.0	183.1	9,940.2	9,941.9	0.00	0.00	0.00	
BHL 1311'FNL & 2143'FWL, Sec.3										

Targets										
Target Name	Dip Angle (°)	Dip Dir. (°)	TVD (ft)	+N/-S (ft)	+E/-W (ft)	Northing (ft)	Easting (ft)	Latitude	Longitude	
BHL 1311'FNL & 2143'FWL - hit/miss target - Shape - Point	0.00	0.00	7,223.0	183.1	9,940.2	1,401,708.72	3,204,318.82	40.433771	-104.766013	
SHL 1423'FNL & 2438'FWL - plan hits target center - Point	0.00	0.00	1.0	0.0	0.0	1,401,447.39	3,194,380.75	40.433274	-104.801720	

Casing Points										
Measured Depth (ft)	Vertical Depth (ft)	Name	Casing Diameter (")	Hole Diameter (")						
7,641.8	7,223.0	7"	7	7-1/2						

Plan Annotations										
Measured Depth (ft)	Vertical Depth (ft)	Local Coordinates	+N/-S (ft)	+E/-W (ft)	Comment					
2,000.0	2,000.0	0.0	0.0	KOP #1						
6,516.8	6,506.8	108.6	-155.1	KOP #2						
7,641.8	7,223.0	113.9	561.1	End of Build						

Synergy Resources

Sec.5-T5N-R66W

SRC Wiedeman Pad Sec.5-T5N-R66W

SRC Wiedeman A-5-3CHZ

Wellbore #1

Plan #1 (6-24-14)

Anticollision Report

25 June, 2014

Company:	Synergy Resources	Local Co-ordinate Reference:	Well SRC Wiedeman A-5-3CHZ
Project:	Sec.5-T5N-R66W	TVD Reference:	WELL @ 4796.0ft (RKB -13')
Reference Site:	SRC Wiedeman Pad Sec.5-T5N-R66W	MD Reference:	WELL @ 4796.0ft (RKB -13')
Site Error:	0.0ft	North Reference:	True
Reference Well:	SRC Wiedeman A-5-3CHZ	Survey Calculation Method:	Minimum Curvature
Well Error:	0.0ft	Output errors are at	2.00 sigma
Reference Wellbore	Wellbore #1	Database:	Landmark
Reference Design:	Plan #1 (6-24-14)	Offset TVD Reference:	Offset Datum

Reference	Plan #1 (6-24-14)		
Filter type:	NO GLOBAL FILTER: Using user defined selection & filtering criteria		
Interpolation Method:	Stations	Error Model:	ISCWSA
Depth Range:	Unlimited	Scan Method:	Closest Approach 3D
Results Limited by:	Maximum center-center distance of 1,000.0ft	Error Surface:	Elliptical Conic
Warning Levels Evaluated at:	2.00 Sigma		

Survey Tool Program	Date 6/25/2014			
From (ft)	To (ft)	Survey (Wellbore)	Tool Name	Description
0.0	17,021.1	Plan #1 (6-24-14) (Wellbore #1)	MWD	MWD - Standard

Summary						
Site Name	Reference Measured Depth (ft)	Offset Measured Depth (ft)	Distance Between Centres (ft)	Distance Between Ellipses (ft)	Separation Factor	Warning
Offset Well - Wellbore - Design						
Northridge Pad Sec.4-T5N-R66W						
Northridge 11-4D (Exist.) - Wellbore #1 - Wellbore #1	10,219.2	7,690.1	596.3	464.4	4.520	CC, ES
Northridge 11-4D (Exist.) - Wellbore #1 - Wellbore #1	10,300.0	7,688.1	601.7	467.6	4.485	SF
Northridge 21-4D (Exist.) - Wellbore #1 - Wellbore #1	11,543.1	7,366.6	628.6	481.1	4.261	CC, ES
Northridge 21-4D (Exist.) - Wellbore #1 - Wellbore #1	11,600.0	7,365.1	631.2	482.1	4.233	SF
Northridge 4AD (Exist.) - Wellbore #1 - Wellbore #1	10,983.7	7,371.7	189.8	51.9	1.377	Level 3, CC, ES, SF
SRC Wiedeman Pad Sec.5-T5N-R66W						
SRC Wiedeman 21-5-3CHZ - Wellbore #1 - Plan #1 (6-2	1,000.0	1,000.0	30.0	25.7	7.026	CC
SRC Wiedeman 21-5-3CHZ - Wellbore #1 - Plan #1 (6-2	17,021.2	16,992.5	439.4	-119.2	0.787	Level 1, ES, SF
SRC Wiedeman 21-5-3NHZ - Wellbore #1 - Plan #1 (6-2	500.0	500.0	45.0	43.0	22.261	CC, ES
SRC Wiedeman 21-5-3NHZ - Wellbore #1 - Plan #1 (6-2	17,021.2	16,823.0	710.6	166.8	1.307	Level 3, SF
SRC Wiedeman A-5-3NHZ - Wellbore #1 - Plan #1 (6-24	1,500.0	1,500.0	15.0	8.5	2.301	CC
SRC Wiedeman A-5-3NHZ - Wellbore #1 - Plan #1 (6-24	17,021.2	16,835.5	278.0	-174.6	0.614	Level 1, ES, SF
SRC Wiedeman A-5-4NHZ - Wellbore #1 - Plan #1 (6-24	1,400.0	1,400.0	15.0	9.0	2.477	CC, ES
SRC Wiedeman A-5-4NHZ - Wellbore #1 - Plan #1 (6-24	11,708.4	11,582.0	358.9	125.1	1.535	SF

Northridge Pad Sec.4-T5N-R66W - Northridge 11-4D (Exist.) - Wellbore #1 - Wellbore #1												Offset Site Error:	0.0 ft
Survey Program: 147-MWD												Offset Well Error:	0.0 ft
Reference		Offset		Semi Major Axis			Distance						
Measured Depth	Vertical Depth	Measured Depth	Vertical Depth	Reference	Offset	Highside Toolface	Offset Wellbore Centre		Between Centres	Between Ellipses	Minimum Separation	Separation Factor	Warning
(ft)	(ft)	(ft)	(ft)	(ft)	(ft)	(°)	+N/-S (ft)	+E/-W (ft)	(ft)	(ft)	(ft)		
9,500.0	7,223.0	7,706.8	7,187.4	70.2	49.4	-90.71	729.3	3,133.6	934.1	822.0	112.13	8.330	
9,600.0	7,223.0	7,704.6	7,185.2	72.9	49.4	-90.50	729.3	3,133.7	859.5	744.6	114.87	7.482	
9,700.0	7,223.0	7,702.4	7,182.9	75.6	49.4	-90.28	729.3	3,133.7	790.5	672.9	117.62	6.721	
9,800.0	7,223.0	7,700.1	7,180.6	78.4	49.4	-90.06	729.2	3,133.8	728.8	608.4	120.37	6.055	
9,900.0	7,223.0	7,697.8	7,178.3	81.1	49.4	-89.84	729.2	3,133.8	676.3	553.2	123.13	5.493	
10,000.0	7,223.0	7,695.4	7,176.0	83.9	49.4	-89.61	729.2	3,133.9	635.3	509.4	125.89	5.046	
10,100.0	7,223.0	7,693.0	7,173.6	86.6	49.4	-89.38	729.1	3,134.0	608.1	479.4	128.64	4.727	
10,200.0	7,223.0	7,690.6	7,171.1	89.4	49.4	-89.15	729.1	3,134.0	596.6	465.2	131.40	4.540	
10,219.2	7,223.0	7,690.1	7,170.7	89.9	49.4	-89.10	729.1	3,134.0	596.3	464.4	131.93	4.520 CC, ES	
10,300.0	7,223.0	7,688.1	7,168.7	92.2	49.4	-88.91	729.1	3,134.1	601.7	467.6	134.17	4.485 SF	
10,400.0	7,223.0	7,685.6	7,166.1	94.9	49.4	-88.67	729.0	3,134.1	623.1	486.2	136.93	4.550	
10,500.0	7,223.0	7,683.0	7,163.6	97.7	49.4	-88.42	729.0	3,134.2	659.1	519.4	139.69	4.718	
10,600.0	7,223.0	7,680.4	7,161.0	100.5	49.4	-88.17	728.9	3,134.3	707.4	565.0	142.45	4.966	

CC - Min centre to center distance or convergent point, SF - min separation factor, ES - min ellipse separation

Company:	Synergy Resources	Local Co-ordinate Reference:	Well SRC Wiedeman A-5-3CHZ
Project:	Sec.5-T5N-R66W	TVD Reference:	WELL @ 4796.0ft (RKB -13')
Reference Site:	SRC Wiedeman Pad Sec.5-T5N-R66W	MD Reference:	WELL @ 4796.0ft (RKB -13')
Site Error:	0.0ft	North Reference:	True
Reference Well:	SRC Wiedeman A-5-3CHZ	Survey Calculation Method:	Minimum Curvature
Well Error:	0.0ft	Output errors are at	2.00 sigma
Reference Wellbore	Wellbore #1	Database:	Landmark
Reference Design:	Plan #1 (6-24-14)	Offset TVD Reference:	Offset Datum

Offset Design Northridge Pad Sec.4-T5N-R66W - Northridge 11-4D (Exist.) - Wellbore #1 - Wellbore #1												Offset Site Error:	0.0 ft
Survey Program: 147-MWD												Offset Well Error:	0.0 ft
Reference	Offset	Semi Major Axis		Distance									
Measured Depth (ft)	Vertical Depth (ft)	Measured Depth (ft)	Vertical Depth (ft)	Reference (ft)	Offset (ft)	Highside Toolface (°)	Offset Wellbore Centre +N/-S (ft)	+E/-W (ft)	Between Centres (ft)	Between Ellipses (ft)	Minimum Separation (ft)	Separation Factor	Warning
10,700.0	7,223.0	7,677.8	7,158.3	103.2	49.4	-87.92	728.9	3,134.3	765.9	620.7	145.21	5.275	
10,800.0	7,223.0	7,675.1	7,155.6	106.0	49.4	-87.66	728.9	3,134.4	832.3	684.3	147.96	5.625	
10,900.0	7,223.0	7,672.3	7,152.9	108.8	49.4	-87.40	728.8	3,134.5	904.9	754.1	150.72	6.004	
11,000.0	7,223.0	7,669.5	7,150.1	111.6	49.4	-87.13	728.8	3,134.6	982.3	828.8	153.47	6.400	

Company:	Synergy Resources	Local Co-ordinate Reference:	Well SRC Wiedeman A-5-3CHZ
Project:	Sec.5-T5N-R66W	TVD Reference:	WELL @ 4796.0ft (RKB -13')
Reference Site:	SRC Wiedeman Pad Sec.5-T5N-R66W	MD Reference:	WELL @ 4796.0ft (RKB -13')
Site Error:	0.0ft	North Reference:	True
Reference Well:	SRC Wiedeman A-5-3CHZ	Survey Calculation Method:	Minimum Curvature
Well Error:	0.0ft	Output errors are at	2.00 sigma
Reference Wellbore	Wellbore #1	Database:	Landmark
Reference Design:	Plan #1 (6-24-14)	Offset TVD Reference:	Offset Datum

Offset Design		Northridge Pad Sec.4-T5N-R66W - Northridge 21-4D (Exist.) - Wellbore #1 - Wellbore #1											Offset Site Error:	0.0 ft
Survey Program: 150-MWD													Offset Well Error:	0.0 ft
Reference		Offset		Semi Major Axis			Distance							Warning
Measured Depth	Vertical Depth	Measured Depth	Vertical Depth	Reference	Offset	Highside Toolface	Offset Wellbore Centre		Between Centres	Between Ellipses	Minimum Separation	Separation Factor		
(ft)	(ft)	(ft)	(ft)	(ft)	(ft)	(°)	+N/-S (ft)	+E/-W (ft)	(ft)	(ft)	(ft)			
10,800.0	7,223.0	7,383.2	7,155.9	106.0	31.7	-87.80	771.0	4,457.3	973.2	846.1	127.02	7.662		
10,900.0	7,223.0	7,381.2	7,153.8	108.8	31.7	-87.62	770.9	4,457.3	899.2	769.4	129.78	6.928		
11,000.0	7,223.0	7,379.1	7,151.8	111.6	31.7	-87.43	770.7	4,457.4	830.6	698.1	132.55	6.267		
11,100.0	7,223.0	7,377.0	7,149.6	114.3	31.7	-87.23	770.6	4,457.4	769.0	633.7	135.31	5.683		
11,200.0	7,223.0	7,374.7	7,147.4	117.1	31.7	-87.03	770.5	4,457.5	716.1	578.0	138.07	5.186		
11,300.0	7,223.0	7,372.4	7,145.1	119.9	31.7	-86.82	770.3	4,457.5	674.0	533.1	140.83	4.786		
11,400.0	7,223.0	7,370.1	7,142.8	122.7	31.7	-86.60	770.2	4,457.6	644.7	501.1	143.59	4.490		
11,500.0	7,223.0	7,367.6	7,140.3	125.5	31.7	-86.38	770.0	4,457.6	630.1	483.7	146.35	4.306		
11,543.1	7,223.0	7,366.6	7,139.3	126.6	31.7	-86.28	769.9	4,457.6	628.6	481.1	147.53	4.261 CC, ES		
11,600.0	7,223.0	7,365.1	7,137.8	128.2	31.7	-86.15	769.9	4,457.7	631.2	482.1	149.10	4.233 SF		
11,700.0	7,223.0	7,362.5	7,135.2	131.0	31.6	-85.91	769.7	4,457.7	647.9	496.1	151.85	4.267		
11,800.0	7,223.0	7,361.0	7,133.7	133.8	31.6	-85.78	769.6	4,457.8	679.1	524.5	154.61	4.392		
11,900.0	7,223.0	7,357.6	7,130.3	136.6	31.6	-85.47	769.4	4,457.9	722.8	565.5	157.34	4.594		
12,000.0	7,223.0	7,355.2	7,127.9	139.4	31.6	-85.25	769.2	4,457.9	777.1	617.0	160.08	4.854		
12,100.0	7,223.0	7,352.8	7,125.5	142.2	31.6	-85.03	769.0	4,458.0	839.7	676.9	162.82	5.157		
12,200.0	7,223.0	7,350.3	7,123.0	145.0	31.6	-84.80	768.9	4,458.0	909.1	743.5	165.56	5.491		
12,300.0	7,223.0	7,347.8	7,120.6	147.7	31.6	-84.58	768.7	4,458.1	983.8	815.5	168.29	5.846		

Company:	Synergy Resources	Local Co-ordinate Reference:	Well SRC Wiedeman A-5-3CHZ
Project:	Sec.5-T5N-R66W	TVD Reference:	WELL @ 4796.0ft (RKB -13')
Reference Site:	SRC Wiedeman Pad Sec.5-T5N-R66W	MD Reference:	WELL @ 4796.0ft (RKB -13')
Site Error:	0.0ft	North Reference:	True
Reference Well:	SRC Wiedeman A-5-3CHZ	Survey Calculation Method:	Minimum Curvature
Well Error:	0.0ft	Output errors are at	2.00 sigma
Reference Wellbore	Wellbore #1	Database:	Landmark
Reference Design:	Plan #1 (6-24-14)	Offset TVD Reference:	Offset Datum

Offset Design Northridge Pad Sec.4-T5N-R66W - Northridge 4AD (Exist.) - Wellbore #1 - Wellbore #1												Offset Site Error:	0.0 ft
Survey Program: 182-MWD												Offset Well Error:	0.0 ft
Reference		Offset		Semi Major Axis			Distance						
Measured Depth (ft)	Vertical Depth (ft)	Measured Depth (ft)	Vertical Depth (ft)	Reference (ft)	Offset (ft)	Highside Toolface (°)	Offset Wellbore Centre +N/-S (ft)	+E/-W (ft)	Between Centres (ft)	Between Ellipses (ft)	Minimum Separation (ft)	Separation Factor	Warning
10,100.0	7,223.0	7,382.3	7,192.5	86.6	28.9	93.78	-51.1	3,904.2	903.8	790.6	113.26	7.980	
10,200.0	7,223.0	7,381.1	7,191.3	89.4	28.9	93.42	-51.1	3,904.2	806.3	690.3	116.04	6.949	
10,300.0	7,223.0	7,379.9	7,190.1	92.2	28.9	93.06	-51.2	3,904.2	709.5	590.7	118.83	5.971	
10,400.0	7,223.0	7,378.7	7,188.9	94.9	28.9	92.70	-51.2	3,904.3	613.8	492.2	121.61	5.047	
10,500.0	7,223.0	7,377.5	7,187.7	97.7	28.9	92.33	-51.2	3,904.3	519.6	395.2	124.39	4.177	
10,600.0	7,223.0	7,376.3	7,186.5	100.5	28.9	91.97	-51.2	3,904.3	428.1	300.9	127.18	3.366	
10,700.0	7,223.0	7,375.1	7,185.3	103.2	28.9	91.61	-51.2	3,904.3	341.3	211.4	129.96	2.626	
10,800.0	7,223.0	7,373.9	7,184.1	106.0	28.9	91.25	-51.2	3,904.3	264.1	131.4	132.74	1.990	
10,900.0	7,223.0	7,372.7	7,182.9	108.8	28.9	90.88	-51.2	3,904.3	207.4	71.9	135.52	1.531	
10,983.7	7,223.0	7,371.7	7,181.9	111.1	28.9	90.58	-51.2	3,904.3	189.8	51.9	137.84	1.377 Level 3, CC, ES, SF	
11,000.0	7,223.0	7,371.5	7,181.7	111.6	28.9	90.52	-51.2	3,904.3	190.5	52.2	138.29	1.377 Level 3	
11,100.0	7,223.0	7,370.3	7,180.5	114.3	28.9	90.16	-51.3	3,904.4	222.6	81.5	141.06	1.578	
11,200.0	7,223.0	7,369.1	7,179.3	117.1	28.9	89.79	-51.3	3,904.4	287.7	143.9	143.83	2.000	
11,300.0	7,223.0	7,367.9	7,178.1	119.9	28.9	89.43	-51.3	3,904.4	368.8	222.2	146.59	2.516	
11,400.0	7,223.0	7,366.7	7,176.9	122.7	28.9	89.07	-51.3	3,904.4	457.5	308.1	149.35	3.063	
11,500.0	7,223.0	7,365.5	7,175.7	125.5	28.9	88.70	-51.3	3,904.4	550.0	397.9	152.11	3.616	
11,600.0	7,223.0	7,364.3	7,174.5	128.2	28.9	88.34	-51.3	3,904.4	644.8	489.9	154.86	4.164	
11,700.0	7,223.0	7,363.0	7,173.3	131.0	28.9	87.98	-51.3	3,904.4	740.9	583.3	157.60	4.701	
11,800.0	7,223.0	7,361.8	7,172.1	133.8	28.9	87.62	-51.3	3,904.5	838.0	677.7	160.33	5.226	
11,900.0	7,223.0	7,360.6	7,170.9	136.6	28.9	87.26	-51.3	3,904.5	935.7	772.6	163.06	5.738	

Company:	Synergy Resources	Local Co-ordinate Reference:	Well SRC Wiedeman A-5-3CHZ
Project:	Sec.5-T5N-R66W	TVD Reference:	WELL @ 4796.0ft (RKB -13')
Reference Site:	SRC Wiedeman Pad Sec.5-T5N-R66W	MD Reference:	WELL @ 4796.0ft (RKB -13')
Site Error:	0.0ft	North Reference:	True
Reference Well:	SRC Wiedeman A-5-3CHZ	Survey Calculation Method:	Minimum Curvature
Well Error:	0.0ft	Output errors are at	2.00 sigma
Reference Wellbore	Wellbore #1	Database:	Landmark
Reference Design:	Plan #1 (6-24-14)	Offset TVD Reference:	Offset Datum

Offset Design SRC Wiedeman Pad Sec.5-T5N-R66W - SRC Wiedeman 21-5-3CHZ - Wellbore #1 - Plan #1 (6-24-14)													Offset Site Error:	0.0 ft
Survey Program: 0-MWD													Offset Well Error:	0.0 ft
Reference		Offset		Semi Major Axis			Distance							Warning
Measured Depth (ft)	Vertical Depth (ft)	Measured Depth (ft)	Vertical Depth (ft)	Reference (ft)	Offset (ft)	Highside Toolface (°)	Offset Wellbore Centre +N/-S (ft)	+E/-W (ft)	Between Centres (ft)	Between Ellipses (ft)	Minimum Separation (ft)	Separation Factor		
0.0	0.0	0.0	0.0	0.0	0.0	5.32	29.9	2.8	30.0					
100.0	100.0	100.0	100.0	0.1	0.1	5.32	29.9	2.8	30.0	29.8	0.22	133.486		
200.0	200.0	200.0	200.0	0.3	0.3	5.32	29.9	2.8	30.0	29.3	0.67	44.495		
300.0	300.0	300.0	300.0	0.6	0.6	5.32	29.9	2.8	30.0	28.9	1.12	26.697		
400.0	400.0	400.0	400.0	0.8	0.8	5.32	29.9	2.8	30.0	28.4	1.57	19.069		
500.0	500.0	500.0	500.0	1.0	1.0	5.32	29.9	2.8	30.0	28.0	2.02	14.832		
600.0	600.0	600.0	600.0	1.2	1.2	5.32	29.9	2.8	30.0	27.5	2.47	12.135		
700.0	700.0	700.0	700.0	1.5	1.5	5.32	29.9	2.8	30.0	27.1	2.92	10.268		
800.0	800.0	800.0	800.0	1.7	1.7	5.32	29.9	2.8	30.0	26.6	3.37	8.899		
900.0	900.0	900.0	900.0	1.9	1.9	5.32	29.9	2.8	30.0	26.2	3.82	7.852		
1,000.0	1,000.0	1,000.0	1,000.0	2.1	2.1	5.32	29.9	2.8	30.0	25.7	4.27	7.026 CC		
1,100.0	1,100.0	1,099.0	1,099.0	2.4	2.4	4.38	31.5	2.4	31.7	26.9	4.72	6.711		
1,200.0	1,200.0	1,197.7	1,197.6	2.6	2.6	2.07	36.5	1.3	36.6	31.5	5.16	7.095		
1,300.0	1,300.0	1,296.0	1,295.5	2.8	2.8	-0.63	44.8	-0.5	45.0	39.4	5.62	8.017		
1,400.0	1,400.0	1,395.2	1,394.1	3.0	3.0	-2.89	55.2	-2.8	55.6	49.5	6.08	9.148		
1,500.0	1,500.0	1,494.6	1,492.9	3.3	3.3	-4.44	65.7	-5.1	66.3	59.8	6.55	10.123		
1,600.0	1,600.0	1,594.0	1,591.7	3.5	3.6	-5.55	76.2	-7.4	77.0	70.0	7.03	10.964		
1,700.0	1,700.0	1,693.4	1,690.6	3.7	3.8	-6.39	86.7	-9.7	87.8	80.3	7.51	11.695		
1,800.0	1,800.0	1,792.8	1,789.4	3.9	4.1	-7.05	97.2	-12.0	98.6	90.6	7.99	12.335		
1,900.0	1,900.0	1,892.2	1,888.2	4.2	4.4	-7.58	107.7	-14.3	109.3	100.9	8.48	12.899		
2,000.0	2,000.0	1,991.7	1,987.0	4.4	4.6	-8.01	118.2	-16.6	120.1	111.1	8.96	13.399		
2,100.0	2,100.0	2,091.2	2,086.0	4.6	4.9	47.05	128.8	-19.0	129.7	120.5	9.24	14.040		
2,200.0	2,199.8	2,190.9	2,185.1	4.8	5.2	48.19	139.3	-21.3	137.0	127.3	9.69	14.141		
2,300.0	2,299.5	2,290.6	2,284.2	5.0	5.5	50.30	149.8	-23.6	142.0	131.9	10.14	14.008		
2,321.9	2,321.3	2,312.5	2,306.0	5.1	5.5	50.89	152.1	-24.1	142.9	132.7	10.24	13.952		
2,400.0	2,398.8	2,390.3	2,383.3	5.3	5.7	53.07	160.4	-25.9	145.8	135.2	10.61	13.742		
2,500.0	2,498.2	2,490.0	2,482.4	5.5	6.0	55.74	170.9	-28.2	149.9	138.8	11.10	13.508		
2,600.0	2,597.6	2,589.6	2,581.5	5.8	6.3	58.26	181.4	-30.5	154.3	142.7	11.59	13.310		
2,700.0	2,696.9	2,689.3	2,680.6	6.0	6.6	60.63	191.9	-32.8	159.0	146.9	12.10	13.140		
2,800.0	2,796.3	2,789.0	2,779.7	6.3	6.9	62.87	202.5	-35.2	163.9	151.3	12.61	12.996		
2,900.0	2,895.7	2,888.7	2,878.8	6.5	7.2	64.98	213.0	-37.5	169.1	155.9	13.13	12.873		
3,000.0	2,995.0	2,988.4	2,977.9	6.8	7.5	66.95	223.5	-39.8	174.5	160.8	13.66	12.767		
3,100.0	3,094.4	3,088.0	3,077.0	7.1	7.8	68.81	234.1	-42.1	180.0	165.8	14.20	12.678		
3,200.0	3,193.8	3,187.7	3,176.1	7.3	8.1	70.56	244.6	-44.4	185.8	171.0	14.74	12.601		
3,300.0	3,293.2	3,287.4	3,275.2	7.6	8.3	72.20	255.1	-46.7	191.7	176.4	15.29	12.537		
3,400.0	3,392.5	3,387.1	3,374.3	7.9	8.6	73.74	265.7	-49.0	197.8	181.9	15.84	12.482		
3,500.0	3,491.9	3,486.7	3,473.4	8.2	8.9	75.18	276.2	-51.4	203.9	187.5	16.40	12.436		
3,600.0	3,591.3	3,586.4	3,572.5	8.4	9.2	76.54	286.7	-53.7	210.3	193.3	16.96	12.397		
3,688.0	3,678.7	3,674.2	3,659.7	8.7	9.5	77.68	296.0	-55.7	215.9	198.5	17.46	12.369		
3,700.0	3,690.6	3,686.1	3,671.6	8.7	9.5	77.84	297.2	-56.0	216.7	199.2	17.52	12.368		
3,800.0	3,790.2	3,785.8	3,770.7	8.9	9.8	78.64	307.8	-58.3	223.6	205.6	18.00	12.423		
3,900.0	3,890.1	3,885.5	3,869.8	9.1	10.1	78.56	318.3	-60.6	231.3	212.9	18.45	12.537		
4,010.0	4,000.0	3,995.0	3,978.6	9.3	10.4	22.56	329.9	-63.2	240.6	221.9	18.68	12.878		
4,100.0	4,090.0	4,084.5	4,067.6	9.5	10.7	21.28	339.3	-65.2	248.6	229.5	19.14	12.991		
4,200.0	4,190.0	4,183.9	4,166.4	9.7	11.0	19.95	349.8	-67.5	257.7	238.0	19.67	13.104		
4,300.0	4,290.0	4,283.3	4,265.3	9.9	11.3	18.71	360.3	-69.9	266.9	246.7	20.20	13.217		
4,400.0	4,390.0	4,382.7	4,364.1	10.1	11.6	17.55	370.8	-72.2	276.3	255.5	20.72	13.330		
4,500.0	4,490.0	4,482.1	4,462.9	10.3	11.9	16.47	381.3	-74.5	285.7	264.4	21.25	13.442		
4,600.0	4,590.0	4,581.6	4,561.8	10.5	12.2	15.46	391.8	-76.8	295.2	273.4	21.78	13.553		
4,700.0	4,690.0	4,681.0	4,660.6	10.7	12.4	14.51	402.3	-79.1	304.8	282.5	22.31	13.663		
4,800.0	4,790.0	4,780.4	4,759.4	11.0	12.7	13.62	412.8	-81.4	314.5	291.7	22.84	13.772		
4,900.0	4,890.0	4,879.8	4,858.3	11.2	13.0	12.78	423.3	-83.7	324.3	300.9	23.37	13.879		

CC - Min centre to center distance or convergent point, SF - min separation factor, ES - min ellipse separation

Company:	Synergy Resources	Local Co-ordinate Reference:	Well SRC Wiedeman A-5-3CHZ
Project:	Sec.5-T5N-R66W	TVD Reference:	WELL @ 4796.0ft (RKB -13')
Reference Site:	SRC Wiedeman Pad Sec.5-T5N-R66W	MD Reference:	WELL @ 4796.0ft (RKB -13')
Site Error:	0.0ft	North Reference:	True
Reference Well:	SRC Wiedeman A-5-3CHZ	Survey Calculation Method:	Minimum Curvature
Well Error:	0.0ft	Output errors are at	2.00 sigma
Reference Wellbore	Wellbore #1	Database:	Landmark
Reference Design:	Plan #1 (6-24-14)	Offset TVD Reference:	Offset Datum

Offset Design SRC Wiedeman Pad Sec.5-T5N-R66W - SRC Wiedeman 21-5-3CHZ - Wellbore #1 - Plan #1 (6-24-14)													Offset Site Error:	0.0 ft
Survey Program: 0-MWD													Offset Well Error:	0.0 ft
Reference		Offset		Semi Major Axis			Distance							Warning
Measured Depth (ft)	Vertical Depth (ft)	Measured Depth (ft)	Vertical Depth (ft)	Reference (ft)	Offset (ft)	Highside Toolface (°)	Offset Wellbore Centre +N/-S (ft)	+E/-W (ft)	Between Centres (ft)	Between Ellipses (ft)	Minimum Separation (ft)	Separation Factor		
5,000.0	4,990.0	4,979.2	4,957.1	11.4	13.3	11.99	433.8	-86.0	334.1	310.2	23.89	13.984		
5,100.0	5,090.0	5,078.6	5,055.9	11.6	13.6	11.25	444.3	-88.3	344.0	319.6	24.42	14.088		
5,200.0	5,190.0	5,178.0	5,154.7	11.8	13.9	10.55	454.8	-90.6	354.0	329.0	24.95	14.189		
5,300.0	5,290.0	5,277.5	5,253.6	12.0	14.2	9.88	465.3	-92.9	364.0	338.5	25.47	14.288		
5,400.0	5,390.0	5,376.9	5,352.4	12.2	14.5	9.26	475.8	-95.2	374.0	348.0	26.00	14.385		
5,500.0	5,490.0	5,476.3	5,451.2	12.5	14.8	8.66	486.3	-97.6	384.1	357.5	26.52	14.480		
5,600.0	5,590.0	5,575.7	5,550.1	12.7	15.1	8.10	496.8	-99.9	394.2	367.1	27.05	14.573		
5,700.0	5,690.0	5,675.1	5,648.9	12.9	15.4	7.56	507.3	-102.2	404.3	376.8	27.57	14.664		
5,800.0	5,790.0	5,774.5	5,747.7	13.1	15.7	7.05	517.8	-104.5	414.5	386.4	28.10	14.753		
5,900.0	5,890.0	5,873.9	5,846.6	13.3	16.0	6.57	528.4	-106.8	424.8	396.1	28.62	14.839		
6,000.0	5,990.0	5,982.7	5,954.7	13.5	16.3	6.09	539.1	-109.2	434.4	405.3	29.15	14.903		
6,100.0	6,090.0	6,099.4	6,071.2	13.7	16.5	5.78	546.6	-110.8	440.6	411.0	29.62	14.877		
6,200.0	6,190.0	6,216.6	6,188.3	14.0	16.7	5.66	549.4	-111.4	442.9	412.9	30.03	14.747		
6,300.0	6,290.0	6,318.3	6,290.0	14.2	16.9	5.66	549.4	-111.4	443.0	412.5	30.42	14.559		
6,400.0	6,390.0	6,418.3	6,390.0	14.4	17.1	5.66	549.4	-111.4	443.0	412.1	30.83	14.368		
6,500.0	6,490.0	6,518.3	6,490.0	14.6	17.2	5.66	549.4	-111.4	443.0	411.7	31.23	14.182		
6,516.8	6,506.8	6,535.0	6,506.8	14.7	17.3	5.66	549.4	-111.4	443.0	411.7	31.30	14.151		
6,550.0	6,540.0	6,566.2	6,538.0	14.7	17.3	-83.92	549.4	-110.7	443.0	413.1	29.82	14.853		
6,600.0	6,589.8	6,613.2	6,584.8	14.8	17.4	-83.96	549.4	-107.2	442.9	412.9	29.99	14.768		
6,650.0	6,639.3	6,660.1	6,631.2	14.9	17.5	-84.02	549.5	-100.5	442.9	412.7	30.14	14.693		
6,700.0	6,688.0	6,707.1	6,677.2	15.0	17.5	-84.10	549.5	-90.8	442.8	412.5	30.28	14.623		
6,750.0	6,735.9	6,754.1	6,722.5	15.0	17.6	-84.22	549.6	-78.2	442.7	412.3	30.41	14.557		
6,800.0	6,782.7	6,800.0	6,765.8	15.1	17.6	-84.35	549.7	-63.0	442.6	412.1	30.54	14.491		
6,802.9	6,785.4	6,804.0	6,769.5	15.1	17.6	-84.37	549.8	-61.5	442.6	412.0	30.55	14.486		
6,850.0	6,828.1	6,848.4	6,810.3	15.2	17.7	-84.52	549.9	-44.0	442.5	411.8	30.69	14.418		
6,900.0	6,872.0	6,895.6	6,852.4	15.2	17.7	-84.72	550.0	-22.5	442.3	411.5	30.86	14.335		
6,950.0	6,914.1	6,943.0	6,893.0	15.3	17.8	-84.93	550.2	1.7	442.2	411.1	31.06	14.234		
7,000.0	6,954.2	6,990.4	6,932.1	15.5	17.8	-85.17	550.4	28.5	442.0	410.7	31.33	14.110		
7,050.0	6,992.1	7,038.0	6,969.4	15.6	17.9	-85.44	550.6	58.0	441.9	410.2	31.67	13.951		
7,100.0	7,027.7	7,085.7	7,004.8	15.9	18.0	-85.72	550.9	90.0	441.7	409.6	32.10	13.759		
7,150.0	7,060.7	7,133.5	7,038.0	16.2	18.1	-86.03	551.1	124.4	441.5	408.9	32.65	13.524		
7,200.0	7,091.0	7,181.5	7,069.0	16.5	18.2	-86.35	551.4	161.0	441.3	408.0	33.32	13.245		
7,250.0	7,118.5	7,229.6	7,097.5	17.0	18.4	-86.69	551.7	199.8	441.2	407.0	34.14	12.924		
7,300.0	7,143.0	7,277.9	7,123.4	17.5	18.7	-87.05	552.0	240.5	441.0	405.9	35.10	12.563		
7,350.0	7,164.4	7,326.4	7,146.7	18.1	19.1	-87.42	552.3	283.0	440.9	404.6	36.23	12.170		
7,400.0	7,182.6	7,375.0	7,167.0	18.8	19.5	-87.81	552.6	327.2	440.7	403.2	37.51	11.751		
7,450.0	7,197.5	7,423.9	7,184.4	19.5	20.1	-88.21	552.9	372.9	440.6	401.7	38.94	11.317		
7,500.0	7,209.0	7,472.9	7,198.7	20.4	20.8	-88.61	553.3	419.8	440.5	400.0	40.50	10.876		
7,550.0	7,217.1	7,522.2	7,209.8	21.2	21.6	-89.03	553.6	467.8	440.5	398.3	42.20	10.438		
7,600.0	7,221.8	7,571.7	7,217.6	22.2	22.4	-89.45	554.0	516.6	440.4	396.4	44.00	10.010		
7,641.8	7,223.0	7,613.2	7,221.5	23.0	23.2	-89.80	554.3	558.0	440.4	394.8	45.57	9.665		
7,700.0	7,223.0	7,671.4	7,223.0	24.1	24.3	-90.00	554.7	616.1	440.4	392.5	47.85	9.203		
7,800.0	7,223.0	7,771.4	7,223.0	26.3	26.3	-90.00	555.4	716.1	440.4	388.3	52.05	8.461		
7,900.0	7,223.0	7,871.4	7,223.0	28.5	28.4	-90.00	556.1	816.1	440.4	383.9	56.48	7.798		
8,000.0	7,223.0	7,971.4	7,223.0	30.9	30.7	-90.00	556.9	916.1	440.4	379.3	61.10	7.207		
8,100.0	7,223.0	8,071.4	7,223.0	33.3	33.0	-90.00	557.6	1,016.1	440.4	374.5	65.88	6.684		
8,200.0	7,223.0	8,171.4	7,223.0	35.7	35.4	-90.00	558.3	1,116.1	440.3	369.6	70.78	6.221		
8,300.0	7,223.0	8,271.4	7,223.0	38.3	37.9	-90.00	559.1	1,216.1	440.3	364.6	75.78	5.811		
8,400.0	7,223.0	8,371.4	7,223.0	40.8	40.4	-90.00	559.8	1,316.1	440.3	359.5	80.86	5.446		
8,500.0	7,223.0	8,471.4	7,223.0	43.4	42.9	-90.00	560.5	1,416.1	440.3	354.3	86.01	5.119		
8,600.0	7,223.0	8,571.4	7,223.0	46.0	45.5	-90.00	561.2	1,516.1	440.3	349.1	91.21	4.827		
8,700.0	7,223.0	8,671.4	7,223.0	48.6	48.1	-90.00	562.0	1,616.1	440.3	343.8	96.46	4.565		

CC - Min centre to center distance or convergent point, SF - min separation factor, ES - min ellipse separation

Company:	Synergy Resources	Local Co-ordinate Reference:	Well SRC Wiedeman A-5-3CHZ
Project:	Sec.5-T5N-R66W	TVD Reference:	WELL @ 4796.0ft (RKB -13')
Reference Site:	SRC Wiedeman Pad Sec.5-T5N-R66W	MD Reference:	WELL @ 4796.0ft (RKB -13')
Site Error:	0.0ft	North Reference:	True
Reference Well:	SRC Wiedeman A-5-3CHZ	Survey Calculation Method:	Minimum Curvature
Well Error:	0.0ft	Output errors are at	2.00 sigma
Reference Wellbore	Wellbore #1	Database:	Landmark
Reference Design:	Plan #1 (6-24-14)	Offset TVD Reference:	Offset Datum

Offset Design SRC Wiedeman Pad Sec.5-T5N-R66W - SRC Wiedeman 21-5-3CHZ - Wellbore #1 - Plan #1 (6-24-14)													Offset Site Error:	0.0 ft
Survey Program: 0-MWD													Offset Well Error:	0.0 ft
Reference		Offset		Semi Major Axis			Distance							Warning
Measured Depth (ft)	Vertical Depth (ft)	Measured Depth (ft)	Vertical Depth (ft)	Reference (ft)	Offset (ft)	Highside Toolface (°)	Offset Wellbore Centre +N/-S (ft)	+E/-W (ft)	Between Centres (ft)	Between Ellipses (ft)	Minimum Separation (ft)	Separation Factor		
8,800.0	7,223.0	8,771.4	7,223.0	51.3	50.7	-90.00	562.7	1,716.1	440.3	338.5	101.75	4.327		
8,900.0	7,223.0	8,871.4	7,223.0	54.0	53.4	-90.00	563.4	1,816.1	440.3	333.2	107.07	4.112		
9,000.0	7,223.0	8,971.4	7,223.0	56.6	56.0	-90.00	564.1	1,916.1	440.3	327.8	112.42	3.916		
9,100.0	7,223.0	9,071.4	7,223.0	59.3	58.7	-90.00	564.9	2,016.1	440.2	322.5	117.79	3.738		
9,200.0	7,223.0	9,171.4	7,223.0	62.0	61.4	-90.00	565.6	2,116.1	440.2	317.1	123.19	3.574		
9,300.0	7,223.0	9,271.4	7,223.0	64.7	64.1	-90.00	566.3	2,216.1	440.2	311.6	128.60	3.423		
9,400.0	7,223.0	9,371.4	7,223.0	67.5	66.8	-90.00	567.1	2,316.1	440.2	306.2	134.03	3.284		
9,500.0	7,223.0	9,471.4	7,223.0	70.2	69.5	-90.00	567.8	2,416.1	440.2	300.7	139.48	3.156		
9,600.0	7,223.0	9,571.4	7,223.0	72.9	72.2	-90.00	568.5	2,516.0	440.2	295.3	144.94	3.037		
9,700.0	7,223.0	9,671.4	7,223.0	75.6	75.0	-90.00	569.2	2,616.0	440.2	289.8	150.41	2.927		
9,800.0	7,223.0	9,771.4	7,223.0	78.4	77.7	-90.00	570.0	2,716.0	440.2	284.3	155.89	2.824		
9,900.0	7,223.0	9,871.4	7,223.0	81.1	80.4	-90.00	570.7	2,816.0	440.2	278.8	161.37	2.728		
10,000.0	7,223.0	9,971.4	7,223.0	83.9	83.2	-90.00	571.4	2,916.0	440.2	273.3	166.87	2.638		
10,100.0	7,223.0	10,071.4	7,223.0	86.6	85.9	-90.00	572.2	3,016.0	440.1	267.8	172.38	2.553		
10,200.0	7,223.0	10,171.4	7,223.0	89.4	88.7	-90.00	572.9	3,116.0	440.1	262.2	177.89	2.474		
10,300.0	7,223.0	10,271.4	7,223.0	92.2	91.4	-90.00	573.6	3,216.0	440.1	256.7	183.41	2.400		
10,400.0	7,223.0	10,371.4	7,223.0	94.9	94.2	-90.00	574.3	3,316.0	440.1	251.2	188.93	2.330		
10,500.0	7,223.0	10,471.4	7,223.0	97.7	96.9	-90.00	575.1	3,416.0	440.1	245.6	194.46	2.263		
10,600.0	7,223.0	10,571.4	7,223.0	100.5	99.7	-90.00	575.8	3,516.0	440.1	240.1	199.99	2.201		
10,700.0	7,223.0	10,671.4	7,223.0	103.2	102.4	-90.00	576.5	3,616.0	440.1	234.6	205.53	2.141		
10,800.0	7,223.0	10,771.4	7,223.0	106.0	105.2	-90.00	577.2	3,716.0	440.1	229.0	211.07	2.085		
10,900.0	7,223.0	10,871.4	7,223.0	108.8	108.0	-90.00	578.0	3,816.0	440.1	223.4	216.62	2.032		
11,000.0	7,223.0	10,971.4	7,223.0	111.6	110.8	-90.00	578.7	3,916.0	440.1	217.9	222.17	1.981		
11,100.0	7,223.0	11,071.4	7,223.0	114.3	113.5	-90.00	579.4	4,016.0	440.0	212.3	227.72	1.932		
11,200.0	7,223.0	11,171.4	7,223.0	117.1	116.3	-90.00	580.2	4,116.0	440.0	206.8	233.28	1.886		
11,300.0	7,223.0	11,271.4	7,223.0	119.9	119.1	-90.00	580.9	4,216.0	440.0	201.2	238.83	1.842		
11,400.0	7,223.0	11,371.4	7,223.0	122.7	121.8	-90.00	581.6	4,316.0	440.0	195.6	244.39	1.800		
11,500.0	7,223.0	11,471.4	7,223.0	125.5	124.6	-90.00	582.3	4,416.0	440.0	190.0	249.96	1.760		
11,600.0	7,223.0	11,571.4	7,223.0	128.2	127.4	-90.00	583.1	4,516.0	440.0	184.5	255.52	1.722		
11,700.0	7,223.0	11,671.4	7,223.0	131.0	130.2	-90.00	583.8	4,616.0	440.0	178.9	261.09	1.685		
11,800.0	7,223.0	11,771.4	7,223.0	133.8	133.0	-90.00	584.5	4,716.0	440.0	173.3	266.66	1.650		
11,900.0	7,223.0	11,871.4	7,223.0	136.6	135.8	-90.00	585.2	4,816.0	440.0	167.7	272.23	1.616		
12,000.0	7,223.0	11,971.4	7,223.0	139.4	138.5	-90.00	586.0	4,916.0	440.0	162.1	277.80	1.584		
12,100.0	7,223.0	12,071.4	7,223.0	142.2	141.3	-90.00	586.7	5,016.0	439.9	156.6	283.38	1.552		
12,200.0	7,223.0	12,171.4	7,223.0	145.0	144.1	-90.00	587.4	5,116.0	439.9	151.0	288.95	1.523		
12,300.0	7,223.0	12,271.4	7,223.0	147.7	146.9	-90.00	588.2	5,216.0	439.9	145.4	294.53	1.494 Level 3		
12,400.0	7,223.0	12,371.4	7,223.0	150.5	149.7	-90.00	588.9	5,316.0	439.9	139.8	300.11	1.466 Level 3		
12,500.0	7,223.0	12,471.4	7,223.0	153.3	152.5	-90.00	589.6	5,416.0	439.9	134.2	305.69	1.439 Level 3		
12,600.0	7,223.0	12,571.4	7,223.0	156.1	155.3	-90.00	590.3	5,516.0	439.9	128.6	311.27	1.413 Level 3		
12,700.0	7,223.0	12,671.4	7,223.0	158.9	158.0	-90.00	591.1	5,616.0	439.9	123.0	316.85	1.388 Level 3		
12,800.0	7,223.0	12,771.4	7,223.0	161.7	160.8	-90.00	591.8	5,716.0	439.9	117.4	322.44	1.364 Level 3		
12,900.0	7,223.0	12,871.4	7,223.0	164.5	163.6	-90.00	592.5	5,816.0	439.9	111.8	328.02	1.341 Level 3		
13,000.0	7,223.0	12,971.4	7,223.0	167.3	166.4	-90.00	593.2	5,916.0	439.9	106.2	333.61	1.318 Level 3		
13,100.0	7,223.0	13,071.4	7,223.0	170.1	169.2	-90.00	594.0	6,016.0	439.8	100.6	339.20	1.297 Level 3		
13,200.0	7,223.0	13,171.4	7,223.0	172.9	172.0	-90.00	594.7	6,116.0	439.8	95.0	344.78	1.276 Level 3		
13,300.0	7,223.0	13,271.4	7,223.0	175.7	174.8	-90.00	595.4	6,216.0	439.8	89.5	350.37	1.255 Level 3		
13,400.0	7,223.0	13,371.4	7,223.0	178.5	177.6	-90.00	596.2	6,315.9	439.8	83.9	355.96	1.236 Level 2		
13,500.0	7,223.0	13,471.4	7,223.0	181.3	180.4	-90.00	596.9	6,415.9	439.8	78.3	361.55	1.216 Level 2		
13,600.0	7,223.0	13,571.4	7,223.0	184.1	183.2	-90.00	597.6	6,515.9	439.8	72.6	367.14	1.198 Level 2		
13,700.0	7,223.0	13,671.4	7,223.0	186.8	186.0	-90.00	598.3	6,615.9	439.8	67.0	372.73	1.180 Level 2		
13,800.0	7,223.0	13,771.4	7,223.0	189.6	188.8	-90.00	599.1	6,715.9	439.8	61.4	378.32	1.162 Level 2		
13,900.0	7,223.0	13,871.4	7,223.0	192.4	191.6	-90.00	599.8	6,815.9	439.8	55.8	383.92	1.145 Level 2		

CC - Min centre to center distance or convergent point, SF - min separation factor, ES - min ellipse separation

Company:	Synergy Resources	Local Co-ordinate Reference:	Well SRC Wiedeman A-5-3CHZ
Project:	Sec.5-T5N-R66W	TVD Reference:	WELL @ 4796.0ft (RKB -13')
Reference Site:	SRC Wiedeman Pad Sec.5-T5N-R66W	MD Reference:	WELL @ 4796.0ft (RKB -13')
Site Error:	0.0ft	North Reference:	True
Reference Well:	SRC Wiedeman A-5-3CHZ	Survey Calculation Method:	Minimum Curvature
Well Error:	0.0ft	Output errors are at	2.00 sigma
Reference Wellbore	Wellbore #1	Database:	Landmark
Reference Design:	Plan #1 (6-24-14)	Offset TVD Reference:	Offset Datum

Offset Design SRC Wiedeman Pad Sec.5-T5N-R66W - SRC Wiedeman 21-5-3CHZ - Wellbore #1 - Plan #1 (6-24-14)													Offset Site Error:	0.0 ft
Survey Program: 0-MWD													Offset Well Error:	0.0 ft
Reference		Offset		Semi Major Axis			Distance							Warning
Measured Depth (ft)	Vertical Depth (ft)	Measured Depth (ft)	Vertical Depth (ft)	Reference (ft)	Offset (ft)	Highside Toolface (°)	Offset Wellbore Centre +N/-S (ft)	+E/-W (ft)	Between Centres (ft)	Between Ellipses (ft)	Minimum Separation (ft)	Separation Factor		
14,000.0	7,223.0	13,971.4	7,223.0	195.2	194.3	-90.00	600.5	6,915.9	439.7	50.2	389.51	1.129	Level 2	
14,100.0	7,223.0	14,071.4	7,223.0	198.0	197.1	-90.00	601.3	7,015.9	439.7	44.6	395.10	1.113	Level 2	
14,200.0	7,223.0	14,171.4	7,223.0	200.8	199.9	-90.00	602.0	7,115.9	439.7	39.0	400.70	1.097	Level 2	
14,300.0	7,223.0	14,271.4	7,223.0	203.6	202.7	-90.00	602.7	7,215.9	439.7	33.4	406.29	1.082	Level 2	
14,400.0	7,223.0	14,371.4	7,223.0	206.4	205.5	-90.00	603.4	7,315.9	439.7	27.8	411.89	1.068	Level 2	
14,500.0	7,223.0	14,471.4	7,223.0	209.2	208.3	-90.00	604.2	7,415.9	439.7	22.2	417.49	1.053	Level 2	
14,600.0	7,223.0	14,571.4	7,223.0	212.0	211.1	-90.00	604.9	7,515.9	439.7	16.6	423.08	1.039	Level 2	
14,700.0	7,223.0	14,671.4	7,223.0	214.8	213.9	-90.00	605.6	7,615.9	439.7	11.0	428.68	1.026	Level 2	
14,800.0	7,223.0	14,771.4	7,223.0	217.6	216.7	-90.00	606.3	7,715.9	439.7	5.4	434.28	1.012	Level 2	
14,900.0	7,223.0	14,871.4	7,223.0	220.4	219.5	-90.00	607.1	7,815.9	439.7	-0.2	439.87	1.000	Level 1	
15,000.0	7,223.0	14,971.4	7,223.0	223.2	222.3	-90.00	607.8	7,915.9	439.6	-5.8	445.47	0.987	Level 1	
15,100.0	7,223.0	15,071.4	7,223.0	226.0	225.1	-90.00	608.5	8,015.9	439.6	-11.4	451.07	0.975	Level 1	
15,200.0	7,223.0	15,171.4	7,223.0	228.8	227.9	-90.00	609.3	8,115.9	439.6	-17.0	456.67	0.963	Level 1	
15,300.0	7,223.0	15,271.4	7,223.0	231.6	230.7	-90.00	610.0	8,215.9	439.6	-22.7	462.27	0.951	Level 1	
15,400.0	7,223.0	15,371.4	7,223.0	234.4	233.5	-90.00	610.7	8,315.9	439.6	-28.3	467.87	0.940	Level 1	
15,500.0	7,223.0	15,471.4	7,223.0	237.2	236.3	-90.00	611.4	8,415.9	439.6	-33.9	473.47	0.928	Level 1	
15,600.0	7,223.0	15,571.4	7,223.0	240.0	239.1	-90.00	612.2	8,515.9	439.6	-39.5	479.07	0.918	Level 1	
15,700.0	7,223.0	15,671.4	7,223.0	242.8	241.9	-90.00	612.9	8,615.9	439.6	-45.1	484.67	0.907	Level 1	
15,800.0	7,223.0	15,771.4	7,223.0	245.6	244.7	-90.00	613.6	8,715.9	439.6	-50.7	490.27	0.897	Level 1	
15,900.0	7,223.0	15,871.4	7,223.0	248.4	247.5	-90.00	614.3	8,815.9	439.6	-56.3	495.87	0.886	Level 1	
16,000.0	7,223.0	15,971.4	7,223.0	251.2	250.3	-90.00	615.1	8,915.9	439.5	-61.9	501.47	0.877	Level 1	
16,100.0	7,223.0	16,071.4	7,223.0	254.0	253.1	-90.00	615.8	9,015.9	439.5	-67.5	507.08	0.867	Level 1	
16,200.0	7,223.0	16,171.4	7,223.0	256.8	255.9	-90.00	616.5	9,115.9	439.5	-73.2	512.68	0.857	Level 1	
16,300.0	7,223.0	16,271.4	7,223.0	259.6	258.7	-90.00	617.3	9,215.9	439.5	-78.8	518.28	0.848	Level 1	
16,400.0	7,223.0	16,371.4	7,223.0	262.4	261.5	-90.00	618.0	9,315.9	439.5	-84.4	523.88	0.839	Level 1	
16,500.0	7,223.0	16,471.4	7,223.0	265.2	264.3	-90.00	618.7	9,415.9	439.5	-90.0	529.49	0.830	Level 1	
16,600.0	7,223.0	16,571.4	7,223.0	268.0	267.1	-90.00	619.4	9,515.9	439.5	-95.6	535.09	0.821	Level 1	
16,700.0	7,223.0	16,671.4	7,223.0	270.8	269.9	-90.00	620.2	9,615.9	439.5	-101.2	540.69	0.813	Level 1	
16,800.0	7,223.0	16,771.4	7,223.0	273.6	272.7	-90.00	620.9	9,715.9	439.5	-106.8	546.30	0.804	Level 1	
16,900.0	7,223.0	16,871.4	7,223.0	276.4	275.5	-90.00	621.6	9,815.9	439.5	-112.4	551.90	0.796	Level 1	
17,000.0	7,223.0	16,971.4	7,223.0	279.2	278.3	-90.00	622.4	9,915.9	439.4	-118.1	557.50	0.788	Level 1	
17,021.2	7,223.0	16,992.5	7,223.0	279.8	278.9	-90.00	622.5	9,937.0	439.4	-119.2	558.69	0.787	Level 1, ES, SF	

Company:	Synergy Resources	Local Co-ordinate Reference:	Well SRC Wiedeman A-5-3CHZ
Project:	Sec.5-T5N-R66W	TVD Reference:	WELL @ 4796.0ft (RKB -13')
Reference Site:	SRC Wiedeman Pad Sec.5-T5N-R66W	MD Reference:	WELL @ 4796.0ft (RKB -13')
Site Error:	0.0ft	North Reference:	True
Reference Well:	SRC Wiedeman A-5-3CHZ	Survey Calculation Method:	Minimum Curvature
Well Error:	0.0ft	Output errors are at	2.00 sigma
Reference Wellbore	Wellbore #1	Database:	Landmark
Reference Design:	Plan #1 (6-24-14)	Offset TVD Reference:	Offset Datum

Offset Design SRC Wiedeman Pad Sec.5-T5N-R66W - SRC Wiedeman 21-5-3NHZ - Wellbore #1 - Plan #1 (6-24-14)													Offset Site Error:	0.0 ft
Survey Program: 0-MWD													Offset Well Error:	0.0 ft
Reference		Offset		Semi Major Axis			Distance							Warning
Measured Depth (ft)	Vertical Depth (ft)	Measured Depth (ft)	Vertical Depth (ft)	Reference (ft)	Offset (ft)	Highside Toolface (°)	Offset Wellbore Centre +N/-S (ft)	+E/-W (ft)	Between Centres (ft)	Between Ellipses (ft)	Minimum Separation (ft)	Separation Factor		
0.0	0.0	0.0	0.0	0.0	0.0	5.68	44.8	4.5	45.0					
100.0	100.0	100.0	100.0	0.1	0.1	5.68	44.8	4.5	45.0	44.8	0.22	200.348		
200.0	200.0	200.0	200.0	0.3	0.3	5.68	44.8	4.5	45.0	44.4	0.67	66.783		
300.0	300.0	300.0	300.0	0.6	0.6	5.68	44.8	4.5	45.0	43.9	1.12	40.070		
400.0	400.0	400.0	400.0	0.8	0.8	5.68	44.8	4.5	45.0	43.5	1.57	28.621		
500.0	500.0	500.0	500.0	1.0	1.0	5.68	44.8	4.5	45.0	43.0	2.02	22.261 CC, ES		
600.0	600.0	598.5	598.4	1.2	1.2	5.23	46.5	4.3	46.7	44.2	2.47	18.922		
700.0	700.0	696.7	696.5	1.5	1.5	4.05	51.5	3.6	51.8	48.8	2.92	17.743		
800.0	800.0	794.4	793.9	1.7	1.7	2.53	59.8	2.6	60.2	56.8	3.37	17.836		
900.0	900.0	891.5	890.3	1.9	1.9	1.01	71.3	1.3	72.0	68.1	3.85	18.709		
1,000.0	1,000.0	989.5	987.2	2.1	2.2	-0.31	85.6	-0.5	86.5	82.2	4.35	19.909		
1,100.0	1,100.0	1,088.4	1,085.0	2.4	2.5	-1.27	100.1	-2.2	101.3	96.4	4.85	20.860		
1,200.0	1,200.0	1,187.3	1,182.8	2.6	2.8	-1.98	114.7	-4.0	116.1	110.7	5.37	21.604		
1,300.0	1,300.0	1,286.2	1,280.6	2.8	3.2	-2.54	129.3	-5.7	130.9	125.0	5.89	22.198		
1,400.0	1,400.0	1,385.1	1,378.4	3.0	3.5	-2.98	143.9	-7.5	145.7	139.2	6.42	22.683		
1,500.0	1,500.0	1,484.0	1,476.2	3.3	3.8	-3.34	158.4	-9.2	160.5	153.5	6.95	23.086		
1,600.0	1,600.0	1,582.9	1,574.0	3.5	4.1	-3.64	173.0	-11.0	175.3	167.8	7.48	23.425		
1,700.0	1,700.0	1,681.8	1,671.8	3.7	4.5	-3.89	187.6	-12.8	190.1	182.1	8.02	23.714		
1,800.0	1,800.0	1,780.6	1,769.6	3.9	4.8	-4.10	202.2	-14.5	205.0	196.4	8.55	23.964		
1,900.0	1,900.0	1,879.5	1,867.4	4.2	5.2	-4.29	216.7	-16.3	219.8	210.7	9.09	24.182		
2,000.0	2,000.0	1,978.4	1,965.2	4.4	5.5	-4.45	231.3	-18.0	234.6	225.0	9.63	24.373		
2,100.0	2,100.0	2,077.5	2,063.1	4.6	5.8	50.50	245.9	-19.8	248.3	239.0	9.36	26.526		
2,200.0	2,199.8	2,176.7	2,161.3	4.8	6.2	51.07	260.5	-21.5	259.9	250.1	9.82	26.453		
2,300.0	2,299.5	2,276.1	2,259.6	5.0	6.5	52.19	275.2	-23.3	269.4	259.1	10.29	26.166		
2,321.9	2,321.3	2,297.9	2,281.2	5.1	6.6	52.51	278.4	-23.7	271.2	260.8	10.40	26.077		
2,400.0	2,398.8	2,375.5	2,357.9	5.3	6.9	53.75	289.8	-25.1	277.5	266.7	10.78	25.749		
2,500.0	2,498.2	2,474.9	2,456.1	5.5	7.2	55.26	304.5	-26.8	285.8	274.5	11.27	25.358		
2,600.0	2,597.6	2,574.3	2,554.4	5.8	7.6	56.68	319.1	-28.6	294.3	282.5	11.77	24.998		
2,700.0	2,696.9	2,673.6	2,652.7	6.0	7.9	58.02	333.8	-30.4	303.0	290.7	12.28	24.664		
2,800.0	2,796.3	2,773.0	2,751.0	6.3	8.3	59.29	348.4	-32.1	311.8	299.0	12.80	24.354		
2,900.0	2,895.7	2,872.4	2,849.3	6.5	8.6	60.49	363.1	-33.9	320.7	307.4	13.33	24.065		
3,000.0	2,995.0	2,971.8	2,947.5	6.8	8.9	61.62	377.7	-35.7	329.8	316.0	13.86	23.797		
3,100.0	3,094.4	3,071.2	3,045.8	7.1	9.3	62.69	392.4	-37.4	339.0	324.6	14.40	23.547		
3,200.0	3,193.8	3,170.5	3,144.1	7.3	9.6	63.70	407.0	-39.2	348.4	333.4	14.94	23.313		
3,300.0	3,293.2	3,269.9	3,242.4	7.6	10.0	64.66	421.7	-41.0	357.8	342.3	15.49	23.095		
3,400.0	3,392.5	3,369.3	3,340.7	7.9	10.3	65.58	436.3	-42.7	367.3	351.3	16.05	22.890		
3,500.0	3,491.9	3,468.7	3,438.9	8.2	10.7	66.44	451.0	-44.5	376.9	360.3	16.61	22.699		
3,600.0	3,591.3	3,568.1	3,537.2	8.4	11.0	67.26	465.6	-46.3	386.6	369.4	17.17	22.519		
3,688.0	3,678.7	3,655.5	3,623.7	8.7	11.3	67.96	478.5	-47.8	395.2	377.5	17.67	22.370		
3,700.0	3,690.6	3,667.4	3,635.5	8.7	11.4	68.07	480.3	-48.0	396.4	378.7	17.73	22.356		
3,800.0	3,790.2	3,766.8	3,733.8	8.9	11.7	68.72	494.9	-49.8	407.0	388.8	18.21	22.345		
3,900.0	3,890.1	3,866.1	3,831.9	9.1	12.1	68.94	509.5	-51.6	418.9	400.2	18.67	22.441		
4,010.0	4,000.0	3,975.0	3,939.7	9.3	12.5	13.70	525.6	-53.5	433.4	412.6	20.86	20.780		
4,100.0	4,090.0	4,064.1	4,027.7	9.5	12.8	13.09	538.7	-55.1	446.0	424.6	21.36	20.878		
4,200.0	4,190.0	4,163.0	4,125.5	9.7	13.1	12.46	553.3	-56.8	460.0	438.0	21.94	20.965		
4,300.0	4,290.0	4,261.8	4,223.3	9.9	13.5	11.87	567.9	-58.6	474.0	451.5	22.52	21.050		
4,400.0	4,390.0	4,360.7	4,321.1	10.1	13.8	11.31	582.4	-60.3	488.1	465.0	23.10	21.134		
4,500.0	4,490.0	4,459.6	4,418.9	10.3	14.2	10.78	597.0	-62.1	502.3	478.6	23.67	21.215		
4,600.0	4,590.0	4,558.5	4,516.7	10.5	14.5	10.28	611.6	-63.8	516.4	492.2	24.25	21.295		
4,700.0	4,690.0	4,657.4	4,614.5	10.7	14.9	9.81	626.2	-65.6	530.7	505.8	24.83	21.373		
4,800.0	4,790.0	4,756.3	4,712.3	11.0	15.2	9.36	640.7	-67.4	544.9	519.5	25.41	21.448		
4,900.0	4,890.0	4,855.2	4,810.1	11.2	15.6	8.94	655.3	-69.1	559.2	533.2	25.98	21.522		

CC - Min centre to center distance or convergent point, SF - min separation factor, ES - min ellipse separation

Company:	Synergy Resources	Local Co-ordinate Reference:	Well SRC Wiedeman A-5-3CHZ
Project:	Sec.5-T5N-R66W	TVD Reference:	WELL @ 4796.0ft (RKB -13')
Reference Site:	SRC Wiedeman Pad Sec.5-T5N-R66W	MD Reference:	WELL @ 4796.0ft (RKB -13')
Site Error:	0.0ft	North Reference:	True
Reference Well:	SRC Wiedeman A-5-3CHZ	Survey Calculation Method:	Minimum Curvature
Well Error:	0.0ft	Output errors are at	2.00 sigma
Reference Wellbore	Wellbore #1	Database:	Landmark
Reference Design:	Plan #1 (6-24-14)	Offset TVD Reference:	Offset Datum

Offset Design SRC Wiedeman Pad Sec.5-T5N-R66W - SRC Wiedeman 21-5-3NHZ - Wellbore #1 - Plan #1 (6-24-14)												Offset Site Error:	0.0 ft
Survey Program: 0-MWD												Offset Well Error:	0.0 ft
Reference		Offset		Semi Major Axis			Distance						
Measured Depth (ft)	Vertical Depth (ft)	Measured Depth (ft)	Vertical Depth (ft)	Reference (ft)	Offset (ft)	Highside Toolface (°)	Offset Wellbore Centre +N/-S (ft)	+E/-W (ft)	Between Centres (ft)	Between Ellipses (ft)	Minimum Separation (ft)	Separation Factor	Warning
5,000.0	4,990.0	4,954.1	4,907.9	11.4	15.9	8.53	669.9	-70.9	573.5	546.9	26.56	21.594	
5,100.0	5,090.0	5,053.0	5,005.7	11.6	16.3	8.15	684.5	-72.6	587.8	560.7	27.13	21.664	
5,200.0	5,190.0	5,151.9	5,103.5	11.8	16.6	7.78	699.0	-74.4	602.2	574.5	27.71	21.732	
5,300.0	5,290.0	5,250.8	5,201.3	12.0	17.0	7.44	713.6	-76.1	616.6	588.3	28.29	21.798	
5,400.0	5,390.0	5,349.7	5,299.1	12.2	17.3	7.10	728.2	-77.9	631.0	602.1	28.86	21.862	
5,500.0	5,490.0	5,448.5	5,396.9	12.5	17.7	6.78	742.8	-79.7	645.4	616.0	29.44	21.925	
5,600.0	5,590.0	5,547.4	5,494.7	12.7	18.0	6.48	757.4	-81.4	659.9	629.8	30.01	21.986	
5,700.0	5,690.0	5,651.7	5,597.8	12.9	18.4	6.18	772.6	-83.3	674.2	643.6	30.60	22.037	
5,800.0	5,790.0	5,780.9	5,726.1	13.1	18.7	5.89	787.8	-85.1	685.8	654.6	31.16	22.007	
5,900.0	5,890.0	5,911.2	5,856.0	13.3	19.0	5.71	797.2	-86.2	692.9	661.2	31.65	21.892	
6,000.0	5,990.0	6,042.2	5,986.9	13.5	19.2	5.65	800.8	-86.6	695.6	663.5	32.07	21.685	
6,100.0	6,090.0	6,145.3	6,090.0	13.7	19.3	5.65	800.8	-86.6	695.6	663.1	32.44	21.440	
6,200.0	6,190.0	6,245.3	6,190.0	14.0	19.5	5.65	800.8	-86.6	695.6	662.8	32.82	21.196	
6,300.0	6,290.0	6,345.3	6,290.0	14.2	19.6	5.65	800.8	-86.6	695.6	662.4	33.19	20.957	
6,329.6	6,319.6	6,374.9	6,319.6	14.2	19.6	5.65	800.8	-86.6	695.6	662.3	33.30	20.887	
6,400.0	6,390.0	6,440.3	6,385.0	14.4	19.7	5.78	800.8	-85.0	695.8	662.2	33.55	20.738	
6,500.0	6,490.0	6,529.3	6,473.2	14.6	19.9	6.72	800.9	-73.5	697.3	663.4	33.87	20.585	
6,516.8	6,506.8	6,543.9	6,487.5	14.7	19.9	6.96	800.9	-70.6	697.7	663.8	33.93	20.566	
6,550.0	6,540.0	6,572.6	6,515.5	14.7	19.9	-82.06	801.0	-64.0	698.7	668.4	30.21	23.129	
6,600.0	6,589.8	6,615.4	6,556.6	14.8	20.0	-81.25	801.0	-52.1	700.1	669.7	30.39	23.035	
6,650.0	6,639.3	6,657.8	6,596.5	14.9	20.0	-80.48	801.1	-37.9	701.7	671.1	30.56	22.957	
6,700.0	6,688.0	6,700.0	6,635.3	15.0	20.0	-79.75	801.3	-21.5	703.2	672.5	30.72	22.892	
6,750.0	6,735.9	6,741.5	6,672.6	15.0	20.1	-79.08	801.4	-3.1	704.8	673.9	30.86	22.837	
6,800.0	6,782.7	6,782.9	6,708.5	15.1	20.1	-78.44	801.5	17.4	706.3	675.3	31.00	22.785	
6,850.0	6,828.1	6,824.0	6,743.0	15.2	20.2	-77.86	801.7	39.7	707.8	676.6	31.17	22.710	
6,900.0	6,872.0	6,864.8	6,775.9	15.2	20.3	-77.33	801.9	63.8	709.2	677.9	31.32	22.646	
6,950.0	6,914.1	6,905.4	6,807.3	15.3	20.3	-76.84	802.1	89.6	710.5	679.0	31.51	22.551	
7,000.0	6,954.2	6,950.0	6,840.0	15.5	20.4	-76.38	802.3	119.9	711.7	680.0	31.76	22.408	
7,050.0	6,992.1	6,986.0	6,865.0	15.6	20.5	-76.05	802.5	145.8	712.8	680.8	32.06	22.231	
7,100.0	7,027.7	7,026.1	6,891.2	15.9	20.6	-75.73	802.7	176.1	713.8	681.3	32.46	21.989	
7,150.0	7,060.7	7,066.1	6,915.6	16.2	20.7	-75.47	802.9	207.8	714.6	681.6	32.96	21.682	
7,200.0	7,091.0	7,105.9	6,938.2	16.5	20.8	-75.27	803.2	240.6	715.2	681.6	33.57	21.306	
7,250.0	7,118.5	7,150.0	6,961.0	17.0	21.0	-75.11	803.4	278.3	715.6	681.3	34.35	20.834	
7,300.0	7,143.0	7,185.5	6,977.6	17.5	21.2	-75.03	803.7	309.7	715.9	680.7	35.21	20.334	
7,350.0	7,164.4	7,225.2	6,994.4	18.1	21.4	-75.01	803.9	345.7	716.0	679.7	36.25	19.753	
7,400.0	7,182.6	7,265.0	7,009.1	18.8	21.8	-75.04	804.2	382.6	715.9	678.4	37.43	19.126	
7,450.0	7,197.5	7,300.0	7,020.4	19.5	22.1	-75.11	804.4	415.8	715.6	676.9	38.68	18.500	
7,500.0	7,209.0	7,344.5	7,032.3	20.4	22.6	-75.27	804.7	458.7	715.1	674.9	40.22	17.781	
7,550.0	7,217.1	7,384.4	7,040.7	21.2	23.1	-75.48	805.0	497.6	714.5	672.7	41.81	17.089	
7,600.0	7,221.8	7,424.4	7,047.0	22.2	23.7	-75.74	805.3	537.1	713.7	670.2	43.51	16.404	
7,641.8	7,223.0	7,457.8	7,050.6	23.0	24.2	-76.00	805.5	570.4	712.9	667.9	44.99	15.845	
7,700.0	7,223.0	7,504.8	7,052.9	24.1	25.0	-76.18	805.9	617.2	712.2	665.1	47.03	15.144	
7,742.1	7,223.0	7,543.9	7,053.0	25.0	25.7	-76.19	806.2	656.4	712.1	663.5	48.66	14.634	
7,800.0	7,223.0	7,601.8	7,053.0	26.3	26.8	-76.19	806.6	714.3	712.1	661.1	51.01	13.961	
7,900.0	7,223.0	7,701.8	7,053.0	28.5	28.8	-76.19	807.3	814.3	712.1	656.8	55.29	12.880	
8,000.0	7,223.0	7,801.8	7,053.0	30.9	31.0	-76.19	808.0	914.3	712.1	652.3	59.76	11.915	
8,100.0	7,223.0	7,901.8	7,053.0	33.3	33.2	-76.19	808.7	1,014.3	712.1	647.7	64.39	11.059	
8,200.0	7,223.0	8,001.8	7,053.0	35.7	35.6	-76.19	809.5	1,114.3	712.1	642.9	69.14	10.299	
8,300.0	7,223.0	8,101.8	7,053.0	38.3	38.0	-76.19	810.2	1,214.3	712.0	638.1	73.99	9.624	
8,400.0	7,223.0	8,201.8	7,053.0	40.8	40.4	-76.19	810.9	1,314.3	712.0	633.1	78.92	9.022	
8,500.0	7,223.0	8,301.8	7,053.0	43.4	42.9	-76.19	811.6	1,414.3	712.0	628.1	83.91	8.485	
8,600.0	7,223.0	8,401.8	7,053.0	46.0	45.5	-76.19	812.3	1,514.3	712.0	623.0	88.97	8.003	

CC - Min centre to center distance or convergent point, SF - min separation factor, ES - min ellipse separation

Company:	Synergy Resources	Local Co-ordinate Reference:	Well SRC Wiedeman A-5-3CHZ
Project:	Sec.5-T5N-R66W	TVD Reference:	WELL @ 4796.0ft (RKB -13')
Reference Site:	SRC Wiedeman Pad Sec.5-T5N-R66W	MD Reference:	WELL @ 4796.0ft (RKB -13')
Site Error:	0.0ft	North Reference:	True
Reference Well:	SRC Wiedeman A-5-3CHZ	Survey Calculation Method:	Minimum Curvature
Well Error:	0.0ft	Output errors are at	2.00 sigma
Reference Wellbore	Wellbore #1	Database:	Landmark
Reference Design:	Plan #1 (6-24-14)	Offset TVD Reference:	Offset Datum

Offset Design SRC Wiedeman Pad Sec.5-T5N-R66W - SRC Wiedeman 21-5-3NHZ - Wellbore #1 - Plan #1 (6-24-14)												Offset Site Error:	0.0 ft
Survey Program: 0-MWD												Offset Well Error:	0.0 ft
Reference		Offset		Semi Major Axis			Distance						Warning
Measured Depth (ft)	Vertical Depth (ft)	Measured Depth (ft)	Vertical Depth (ft)	Reference (ft)	Offset (ft)	Highside Toolface (°)	Offset Wellbore Centre +N/-S (ft)	+E/-W (ft)	Between Centres (ft)	Between Ellipses (ft)	Minimum Separation (ft)	Separation Factor	
8,700.0	7,223.0	8,501.8	7,053.0	48.6	48.1	-76.19	813.1	1,614.3	712.0	617.9	94.06	7.569	
8,800.0	7,223.0	8,601.8	7,053.0	51.3	50.7	-76.19	813.8	1,714.3	712.0	612.8	99.20	7.177	
8,900.0	7,223.0	8,701.8	7,053.0	54.0	53.3	-76.19	814.5	1,814.3	711.9	607.6	104.37	6.821	
9,000.0	7,223.0	8,801.8	7,053.0	56.6	55.9	-76.18	815.2	1,914.3	711.9	602.4	109.57	6.498	
9,100.0	7,223.0	8,901.8	7,053.0	59.3	58.6	-76.18	815.9	2,014.3	711.9	597.1	114.79	6.202	
9,200.0	7,223.0	9,001.8	7,053.0	62.0	61.2	-76.18	816.7	2,114.3	711.9	591.9	120.04	5.931	
9,300.0	7,223.0	9,101.8	7,053.0	64.7	63.9	-76.18	817.4	2,214.3	711.9	586.6	125.30	5.681	
9,400.0	7,223.0	9,201.8	7,053.0	67.5	66.6	-76.18	818.1	2,314.3	711.9	581.3	130.58	5.451	
9,500.0	7,223.0	9,301.8	7,053.0	70.2	69.3	-76.18	818.8	2,414.3	711.8	576.0	135.88	5.239	
9,600.0	7,223.0	9,401.8	7,053.0	72.9	72.0	-76.18	819.5	2,514.3	711.8	570.6	141.18	5.042	
9,700.0	7,223.0	9,501.8	7,053.0	75.6	74.7	-76.18	820.3	2,614.3	711.8	565.3	146.50	4.859	
9,800.0	7,223.0	9,601.8	7,053.0	78.4	77.4	-76.18	821.0	2,714.3	711.8	560.0	151.83	4.688	
9,900.0	7,223.0	9,701.8	7,053.0	81.1	80.2	-76.18	821.7	2,814.3	711.8	554.6	157.17	4.529	
10,000.0	7,223.0	9,801.8	7,053.0	83.9	82.9	-76.18	822.4	2,914.3	711.8	549.2	162.52	4.380	
10,100.0	7,223.0	9,901.8	7,053.0	86.6	85.6	-76.18	823.1	3,014.3	711.7	543.9	167.88	4.240	
10,200.0	7,223.0	10,001.8	7,053.0	89.4	88.4	-76.18	823.9	3,114.3	711.7	538.5	173.24	4.108	
10,300.0	7,223.0	10,101.8	7,053.0	92.2	91.1	-76.18	824.6	3,214.3	711.7	533.1	178.61	3.985	
10,400.0	7,223.0	10,201.8	7,053.0	94.9	93.9	-76.18	825.3	3,314.2	711.7	527.7	183.98	3.868	
10,500.0	7,223.0	10,301.8	7,053.0	97.7	96.6	-76.18	826.0	3,414.2	711.7	522.3	189.36	3.758	
10,600.0	7,223.0	10,401.8	7,053.0	100.5	99.4	-76.18	826.7	3,514.2	711.7	516.9	194.74	3.654	
10,700.0	7,223.0	10,501.8	7,053.0	103.2	102.2	-76.18	827.5	3,614.2	711.6	511.5	200.13	3.556	
10,800.0	7,223.0	10,601.8	7,053.0	106.0	104.9	-76.18	828.2	3,714.2	711.6	506.1	205.52	3.462	
10,900.0	7,223.0	10,701.8	7,053.0	108.8	107.7	-76.18	828.9	3,814.2	711.6	500.7	210.92	3.374	
11,000.0	7,223.0	10,801.8	7,053.0	111.6	110.4	-76.18	829.6	3,914.2	711.6	495.3	216.32	3.290	
11,100.0	7,223.0	10,901.8	7,053.0	114.3	113.2	-76.18	830.3	4,014.2	711.6	489.9	221.72	3.209	
11,200.0	7,223.0	11,001.8	7,053.0	117.1	116.0	-76.18	831.1	4,114.2	711.6	484.4	227.13	3.133	
11,300.0	7,223.0	11,101.8	7,053.0	119.9	118.8	-76.18	831.8	4,214.2	711.5	479.0	232.54	3.060	
11,400.0	7,223.0	11,201.8	7,053.0	122.7	121.5	-76.18	832.5	4,314.2	711.5	473.6	237.95	2.990	
11,500.0	7,223.0	11,301.8	7,053.0	125.5	124.3	-76.18	833.2	4,414.2	711.5	468.1	243.36	2.924	
11,600.0	7,223.0	11,401.8	7,053.0	128.2	127.1	-76.18	833.9	4,514.2	711.5	462.7	248.78	2.860	
11,700.0	7,223.0	11,501.8	7,053.0	131.0	129.9	-76.18	834.7	4,614.2	711.5	457.3	254.20	2.799	
11,800.0	7,223.0	11,601.8	7,053.0	133.8	132.6	-76.18	835.4	4,714.2	711.5	451.8	259.62	2.740	
11,900.0	7,223.0	11,701.8	7,053.0	136.6	135.4	-76.18	836.1	4,814.2	711.4	446.4	265.04	2.684	
12,000.0	7,223.0	11,801.8	7,053.0	139.4	138.2	-76.18	836.8	4,914.2	711.4	441.0	270.46	2.630	
12,100.0	7,223.0	11,901.8	7,053.0	142.2	141.0	-76.17	837.6	5,014.2	711.4	435.5	275.89	2.579	
12,200.0	7,223.0	12,001.8	7,053.0	145.0	143.8	-76.17	838.3	5,114.2	711.4	430.1	281.31	2.529	
12,300.0	7,223.0	12,101.8	7,053.0	147.7	146.5	-76.17	839.0	5,214.2	711.4	424.6	286.74	2.481	
12,400.0	7,223.0	12,201.8	7,053.0	150.5	149.3	-76.17	839.7	5,314.2	711.4	419.2	292.17	2.435	
12,500.0	7,223.0	12,301.8	7,053.0	153.3	152.1	-76.17	840.4	5,414.2	711.3	413.7	297.60	2.390	
12,600.0	7,223.0	12,401.8	7,053.0	156.1	154.9	-76.17	841.2	5,514.2	711.3	408.3	303.03	2.347	
12,700.0	7,223.0	12,501.8	7,053.0	158.9	157.7	-76.17	841.9	5,614.2	711.3	402.8	308.46	2.306	
12,800.0	7,223.0	12,601.8	7,053.0	161.7	160.5	-76.17	842.6	5,714.2	711.3	397.4	313.90	2.266	
12,900.0	7,223.0	12,701.8	7,053.0	164.5	163.3	-76.17	843.3	5,814.2	711.3	391.9	319.33	2.227	
13,000.0	7,223.0	12,801.8	7,053.0	167.3	166.0	-76.17	844.0	5,914.2	711.3	386.5	324.77	2.190	
13,100.0	7,223.0	12,901.8	7,053.0	170.1	168.8	-76.17	844.8	6,014.2	711.2	381.0	330.21	2.154	
13,200.0	7,223.0	13,001.8	7,053.0	172.9	171.6	-76.17	845.5	6,114.2	711.2	375.6	335.65	2.119	
13,300.0	7,223.0	13,101.8	7,053.0	175.7	174.4	-76.17	846.2	6,214.2	711.2	370.1	341.08	2.085	
13,400.0	7,223.0	13,201.8	7,053.0	178.5	177.2	-76.17	846.9	6,314.2	711.2	364.7	346.52	2.052	
13,500.0	7,223.0	13,301.8	7,053.0	181.3	180.0	-76.17	847.6	6,414.2	711.2	359.2	351.96	2.021	
13,600.0	7,223.0	13,401.8	7,053.0	184.1	182.8	-76.17	848.4	6,514.2	711.2	353.8	357.41	1.990	
13,700.0	7,223.0	13,501.8	7,053.0	186.8	185.6	-76.17	849.1	6,614.2	711.1	348.3	362.85	1.960	
13,800.0	7,223.0	13,601.8	7,053.0	189.6	188.4	-76.17	849.8	6,714.2	711.1	342.8	368.29	1.931	

CC - Min centre to center distance or convergent point, SF - min separation factor, ES - min ellipse separation

Company:	Synergy Resources	Local Co-ordinate Reference:	Well SRC Wiedeman A-5-3CHZ
Project:	Sec.5-T5N-R66W	TVD Reference:	WELL @ 4796.0ft (RKB -13')
Reference Site:	SRC Wiedeman Pad Sec.5-T5N-R66W	MD Reference:	WELL @ 4796.0ft (RKB -13')
Site Error:	0.0ft	North Reference:	True
Reference Well:	SRC Wiedeman A-5-3CHZ	Survey Calculation Method:	Minimum Curvature
Well Error:	0.0ft	Output errors are at	2.00 sigma
Reference Wellbore	Wellbore #1	Database:	Landmark
Reference Design:	Plan #1 (6-24-14)	Offset TVD Reference:	Offset Datum

Offset Design SRC Wiedeman Pad Sec.5-T5N-R66W - SRC Wiedeman 21-5-3NHZ - Wellbore #1 - Plan #1 (6-24-14)													Offset Site Error:	0.0 ft
Survey Program: 0-MWD													Offset Well Error:	0.0 ft
Reference		Offset		Semi Major Axis			Distance							Warning
Measured Depth (ft)	Vertical Depth (ft)	Measured Depth (ft)	Vertical Depth (ft)	Reference (ft)	Offset (ft)	Highside Toolface (°)	Offset Wellbore Centre +N/-S (ft)	+E/-W (ft)	Between Centres (ft)	Between Ellipses (ft)	Minimum Separation (ft)	Separation Factor		
13,900.0	7,223.0	13,701.8	7,053.0	192.4	191.2	-76.17	850.5	6,814.2	711.1	337.4	373.73	1.903		
14,000.0	7,223.0	13,801.8	7,053.0	195.2	194.0	-76.17	851.2	6,914.2	711.1	331.9	379.18	1.875		
14,100.0	7,223.0	13,901.8	7,053.0	198.0	196.8	-76.17	852.0	7,014.2	711.1	326.5	384.62	1.849		
14,200.0	7,223.0	14,001.8	7,053.0	200.8	199.6	-76.17	852.7	7,114.2	711.1	321.0	390.07	1.823		
14,300.0	7,223.0	14,101.8	7,053.0	203.6	202.4	-76.17	853.4	7,214.1	711.0	315.5	395.51	1.798		
14,400.0	7,223.0	14,201.8	7,053.0	206.4	205.1	-76.17	854.1	7,314.1	711.0	310.1	400.96	1.773		
14,500.0	7,223.0	14,301.8	7,053.0	209.2	207.9	-76.17	854.8	7,414.1	711.0	304.6	406.40	1.750		
14,600.0	7,223.0	14,401.8	7,053.0	212.0	210.7	-76.17	855.6	7,514.1	711.0	299.1	411.85	1.726		
14,700.0	7,223.0	14,501.8	7,053.0	214.8	213.5	-76.17	856.3	7,614.1	711.0	293.7	417.30	1.704		
14,800.0	7,223.0	14,601.8	7,053.0	217.6	216.3	-76.17	857.0	7,714.1	711.0	288.2	422.74	1.682		
14,900.0	7,223.0	14,701.8	7,053.0	220.4	219.1	-76.17	857.7	7,814.1	710.9	282.8	428.19	1.660		
15,000.0	7,223.0	14,801.8	7,053.0	223.2	221.9	-76.17	858.4	7,914.1	710.9	277.3	433.64	1.639		
15,100.0	7,223.0	14,901.8	7,053.0	226.0	224.7	-76.16	859.2	8,014.1	710.9	271.8	439.09	1.619		
15,200.0	7,223.0	15,001.8	7,053.0	228.8	227.5	-76.16	859.9	8,114.1	710.9	266.4	444.54	1.599		
15,300.0	7,223.0	15,101.8	7,053.0	231.6	230.3	-76.16	860.6	8,214.1	710.9	260.9	449.99	1.580		
15,400.0	7,223.0	15,201.8	7,053.0	234.4	233.1	-76.16	861.3	8,314.1	710.9	255.4	455.44	1.561		
15,500.0	7,223.0	15,301.8	7,053.0	237.2	235.9	-76.16	862.1	8,414.1	710.8	250.0	460.89	1.542		
15,600.0	7,223.0	15,401.8	7,053.0	240.0	238.7	-76.16	862.8	8,514.1	710.8	244.5	466.34	1.524		
15,700.0	7,223.0	15,501.8	7,053.0	242.8	241.5	-76.16	863.5	8,614.1	710.8	239.0	471.79	1.507		
15,800.0	7,223.0	15,601.8	7,053.0	245.6	244.3	-76.16	864.2	8,714.1	710.8	233.6	477.24	1.489 Level 3		
15,900.0	7,223.0	15,701.8	7,053.0	248.4	247.1	-76.16	864.9	8,814.1	710.8	228.1	482.69	1.473 Level 3		
16,000.0	7,223.0	15,801.8	7,053.0	251.2	249.9	-76.16	865.7	8,914.1	710.8	222.6	488.15	1.456 Level 3		
16,100.0	7,223.0	15,901.8	7,053.0	254.0	252.7	-76.16	866.4	9,014.1	710.7	217.1	493.60	1.440 Level 3		
16,200.0	7,223.0	16,001.8	7,053.0	256.8	255.5	-76.16	867.1	9,114.1	710.7	211.7	499.05	1.424 Level 3		
16,300.0	7,223.0	16,101.8	7,053.0	259.6	258.3	-76.16	867.8	9,214.1	710.7	206.2	504.50	1.409 Level 3		
16,400.0	7,223.0	16,201.8	7,053.0	262.4	261.1	-76.16	868.5	9,314.1	710.7	200.7	509.96	1.394 Level 3		
16,500.0	7,223.0	16,301.8	7,053.0	265.2	263.9	-76.16	869.3	9,414.1	710.7	195.3	515.41	1.379 Level 3		
16,600.0	7,223.0	16,401.8	7,053.0	268.0	266.7	-76.16	870.0	9,514.1	710.7	189.8	520.86	1.364 Level 3		
16,700.0	7,223.0	16,501.8	7,053.0	270.8	269.5	-76.16	870.7	9,614.1	710.6	184.3	526.32	1.350 Level 3		
16,800.0	7,223.0	16,601.8	7,053.0	273.6	272.3	-76.16	871.4	9,714.1	710.6	178.9	531.77	1.336 Level 3		
16,900.0	7,223.0	16,701.8	7,053.0	276.4	275.1	-76.16	872.1	9,814.1	710.6	173.4	537.22	1.323 Level 3		
17,000.0	7,223.0	16,801.8	7,053.0	279.2	277.9	-76.16	872.9	9,914.1	710.6	167.9	542.68	1.309 Level 3		
17,021.2	7,223.0	16,823.0	7,053.0	279.8	278.5	-76.16	873.0	9,935.2	710.6	166.8	543.83	1.307 Level 3, SF		

Company:	Synergy Resources	Local Co-ordinate Reference:	Well SRC Wiedeman A-5-3CHZ
Project:	Sec.5-T5N-R66W	TVD Reference:	WELL @ 4796.0ft (RKB -13')
Reference Site:	SRC Wiedeman Pad Sec.5-T5N-R66W	MD Reference:	WELL @ 4796.0ft (RKB -13')
Site Error:	0.0ft	North Reference:	True
Reference Well:	SRC Wiedeman A-5-3CHZ	Survey Calculation Method:	Minimum Curvature
Well Error:	0.0ft	Output errors are at	2.00 sigma
Reference Wellbore	Wellbore #1	Database:	Landmark
Reference Design:	Plan #1 (6-24-14)	Offset TVD Reference:	Offset Datum

Offset Design SRC Wiedeman Pad Sec.5-T5N-R66W - SRC Wiedeman A-5-3NHZ - Wellbore #1 - Plan #1 (6-24-14)													Offset Site Error:	0.0 ft
Survey Program: 0-MWD													Offset Well Error:	0.0 ft
Reference		Offset		Semi Major Axis			Distance							Warning
Measured Depth (ft)	Vertical Depth (ft)	Measured Depth (ft)	Vertical Depth (ft)	Reference (ft)	Offset (ft)	Highside Toolface (°)	Offset Wellbore Centre +N/-S (ft)	+E/-W (ft)	Between Centres (ft)	Between Ellipses (ft)	Minimum Separation (ft)	Separation Factor		
0.0	0.0	0.0	0.0	0.0	0.0	5.32	14.9	1.4	15.0	15.0	0.00	N/A		
100.0	100.0	100.0	100.0	0.1	0.1	5.32	14.9	1.4	15.0	14.8	0.22	66.743		
200.0	200.0	200.0	200.0	0.3	0.3	5.32	14.9	1.4	15.0	14.3	0.67	22.248		
300.0	300.0	300.0	300.0	0.6	0.6	5.32	14.9	1.4	15.0	13.9	1.12	13.349		
400.0	400.0	400.0	400.0	0.8	0.8	5.32	14.9	1.4	15.0	13.4	1.57	9.535		
500.0	500.0	500.0	500.0	1.0	1.0	5.32	14.9	1.4	15.0	13.0	2.02	7.416		
600.0	600.0	600.0	600.0	1.2	1.2	5.32	14.9	1.4	15.0	12.5	2.47	6.068		
700.0	700.0	700.0	700.0	1.5	1.5	5.32	14.9	1.4	15.0	12.1	2.92	5.134		
800.0	800.0	800.0	800.0	1.7	1.7	5.32	14.9	1.4	15.0	11.6	3.37	4.450		
900.0	900.0	900.0	900.0	1.9	1.9	5.32	14.9	1.4	15.0	11.2	3.82	3.926		
1,000.0	1,000.0	1,000.0	1,000.0	2.1	2.1	5.32	14.9	1.4	15.0	10.7	4.27	3.513		
1,100.0	1,100.0	1,100.0	1,100.0	2.4	2.4	5.32	14.9	1.4	15.0	10.3	4.72	3.178		
1,200.0	1,200.0	1,200.0	1,200.0	2.6	2.6	5.32	14.9	1.4	15.0	9.8	5.17	2.902		
1,300.0	1,300.0	1,300.0	1,300.0	2.8	2.8	5.32	14.9	1.4	15.0	9.4	5.62	2.670		
1,400.0	1,400.0	1,400.0	1,400.0	3.0	3.0	5.32	14.9	1.4	15.0	8.9	6.07	2.472		
1,500.0	1,500.0	1,500.0	1,500.0	3.3	3.3	5.32	14.9	1.4	15.0	8.5	6.52	2.301 CC		
1,600.0	1,600.0	1,599.5	1,599.5	3.5	3.5	2.46	16.5	0.7	16.5	9.6	6.97	2.376		
1,700.0	1,700.0	1,698.8	1,698.8	3.7	3.7	-3.57	21.3	-1.3	21.4	13.9	7.41	2.882		
1,800.0	1,800.0	1,797.6	1,797.0	3.9	3.9	-9.16	29.1	-4.7	29.7	21.8	7.86	3.771		
1,900.0	1,900.0	1,896.9	1,895.8	4.2	4.2	-12.86	38.8	-8.9	40.0	31.7	8.32	4.812		
2,000.0	2,000.0	1,996.3	1,994.7	4.4	4.4	-15.03	48.5	-13.0	50.5	41.8	8.79	5.752		
2,100.0	2,100.0	2,095.9	2,093.7	4.6	4.7	39.48	58.3	-17.2	59.7	50.5	9.20	6.491		
2,200.0	2,199.8	2,195.7	2,192.9	4.8	4.9	41.03	68.0	-21.4	66.3	56.6	9.64	6.874		
2,300.0	2,299.5	2,295.5	2,292.2	5.0	5.2	44.23	77.8	-25.6	70.3	60.2	10.09	6.973		
2,321.9	2,321.3	2,317.4	2,313.9	5.1	5.2	45.16	79.9	-26.5	70.9	60.7	10.19	6.962		
2,400.0	2,398.8	2,395.3	2,391.4	5.3	5.4	48.52	87.5	-29.8	73.0	62.4	10.56	6.911		
2,500.0	2,498.2	2,495.2	2,490.7	5.5	5.7	52.54	97.3	-34.0	75.9	64.9	11.04	6.876		
2,600.0	2,597.6	2,595.0	2,589.9	5.8	6.0	56.24	107.1	-38.2	79.2	67.7	11.54	6.866		
2,700.0	2,696.9	2,694.8	2,689.2	6.0	6.2	59.64	116.8	-42.3	82.8	70.8	12.04	6.877		
2,800.0	2,796.3	2,794.6	2,788.4	6.3	6.5	62.74	126.6	-46.5	86.7	74.1	12.56	6.902		
2,900.0	2,895.7	2,894.4	2,887.7	6.5	6.8	65.57	136.3	-50.7	90.8	77.7	13.08	6.939		
3,000.0	2,995.0	2,994.3	2,986.9	6.8	7.1	68.16	146.1	-54.9	95.1	81.5	13.62	6.983		
3,100.0	3,094.4	3,094.1	3,086.2	7.1	7.3	70.51	155.8	-59.1	99.6	85.4	14.16	7.033		
3,200.0	3,193.8	3,193.9	3,185.4	7.3	7.6	72.66	165.6	-63.3	104.2	89.5	14.70	7.087		
3,300.0	3,293.2	3,293.7	3,284.7	7.6	7.9	74.62	175.3	-67.5	109.0	93.7	15.25	7.144		
3,400.0	3,392.5	3,393.5	3,383.9	7.9	8.2	76.42	185.1	-71.7	113.8	98.0	15.81	7.202		
3,500.0	3,491.9	3,493.3	3,483.2	8.2	8.5	78.07	194.9	-75.8	118.8	102.5	16.37	7.260		
3,600.0	3,591.3	3,593.2	3,582.4	8.4	8.8	79.58	204.6	-80.0	123.9	107.0	16.93	7.319		
3,688.0	3,678.7	3,681.0	3,669.8	8.7	9.0	80.81	213.2	-83.7	128.4	111.0	17.43	7.370		
3,700.0	3,690.6	3,693.0	3,681.7	8.7	9.0	80.98	214.4	-84.2	129.1	111.6	17.49	7.379		
3,800.0	3,790.2	3,792.8	3,781.0	8.9	9.3	81.46	224.1	-88.4	134.6	116.6	17.97	7.489		
3,900.0	3,890.1	3,892.6	3,880.2	9.1	9.6	80.52	233.9	-92.6	140.7	122.3	18.42	7.637		
4,010.0	4,000.0	4,002.1	3,989.1	9.3	9.9	23.06	244.6	-97.2	148.2	130.1	18.12	8.181		
4,100.0	4,090.0	4,091.6	4,078.1	9.5	10.2	20.51	253.3	-101.0	155.0	136.4	18.58	8.343		
4,200.0	4,190.0	4,191.1	4,177.0	9.7	10.5	17.93	263.1	-105.1	162.9	143.8	19.11	8.522		
4,300.0	4,290.0	4,290.5	4,275.8	9.9	10.8	15.59	272.8	-109.3	171.0	151.4	19.65	8.705		
4,400.0	4,390.0	4,389.9	4,374.7	10.1	11.0	13.46	282.5	-113.5	179.5	159.3	20.18	8.891		
4,500.0	4,490.0	4,489.4	4,473.6	10.3	11.3	11.53	292.2	-117.6	188.1	167.4	20.72	9.079		
4,600.0	4,590.0	4,588.8	4,572.4	10.5	11.6	9.77	301.9	-121.8	197.0	175.7	21.26	9.266		
4,700.0	4,690.0	4,688.2	4,671.3	10.7	11.9	8.16	311.6	-126.0	206.0	184.2	21.79	9.453		
4,800.0	4,790.0	4,792.9	4,775.5	11.0	12.2	6.76	320.8	-129.9	214.2	191.9	22.31	9.604		
4,900.0	4,890.0	4,899.8	4,882.1	11.2	12.4	5.93	326.7	-132.5	219.4	196.7	22.76	9.642		

CC - Min centre to center distance or convergent point, SF - min separation factor, ES - min ellipse separation

Company:	Synergy Resources	Local Co-ordinate Reference:	Well SRC Wiedeman A-5-3CHZ
Project:	Sec.5-T5N-R66W	TVD Reference:	WELL @ 4796.0ft (RKB -13')
Reference Site:	SRC Wiedeman Pad Sec.5-T5N-R66W	MD Reference:	WELL @ 4796.0ft (RKB -13')
Site Error:	0.0ft	North Reference:	True
Reference Well:	SRC Wiedeman A-5-3CHZ	Survey Calculation Method:	Minimum Curvature
Well Error:	0.0ft	Output errors are at	2.00 sigma
Reference Wellbore	Wellbore #1	Database:	Landmark
Reference Design:	Plan #1 (6-24-14)	Offset TVD Reference:	Offset Datum

Offset Design												Offset Site Error:	0.0 ft
Survey Program: 0-MWD												Offset Well Error:	0.0 ft
Reference		Offset		Semi Major Axis			Distance						
Measured Depth (ft)	Vertical Depth (ft)	Measured Depth (ft)	Vertical Depth (ft)	Reference (ft)	Offset (ft)	Highside Toolface (°)	Offset Wellbore Centre +N/-S (ft)	+E/-W (ft)	Between Centres (ft)	Between Ellipses (ft)	Minimum Separation (ft)	Separation Factor	Warning
5,000.0	4,990.0	5,007.0	4,989.3	11.4	12.6	5.62	328.9	-133.4	221.4	198.2	23.17	9.556	
5,100.0	5,090.0	5,107.7	5,090.0	11.6	12.7	5.62	328.9	-133.4	221.4	197.8	23.57	9.395	
5,200.0	5,190.0	5,207.7	5,190.0	11.8	12.9	5.62	328.9	-133.4	221.4	197.4	23.98	9.232	
5,300.0	5,290.0	5,307.7	5,290.0	12.0	13.1	5.62	328.9	-133.4	221.4	197.0	24.40	9.074	
5,400.0	5,390.0	5,407.7	5,390.0	12.2	13.3	5.62	328.9	-133.4	221.4	196.6	24.82	8.920	
5,500.0	5,490.0	5,507.7	5,490.0	12.5	13.5	5.62	328.9	-133.4	221.4	196.2	25.24	8.772	
5,600.0	5,590.0	5,607.7	5,590.0	12.7	13.7	5.62	328.9	-133.4	221.4	195.7	25.66	8.627	
5,700.0	5,690.0	5,707.7	5,690.0	12.9	13.9	5.62	328.9	-133.4	221.4	195.3	26.09	8.488	
5,800.0	5,790.0	5,807.7	5,790.0	13.1	14.1	5.62	328.9	-133.4	221.4	194.9	26.51	8.352	
5,900.0	5,890.0	5,907.7	5,890.0	13.3	14.3	5.62	328.9	-133.4	221.4	194.5	26.93	8.221	
6,000.0	5,990.0	6,007.7	5,990.0	13.5	14.5	5.62	328.9	-133.4	221.4	194.0	27.36	8.093	
6,100.0	6,090.0	6,107.7	6,090.0	13.7	14.7	5.62	328.9	-133.4	221.4	193.6	27.78	7.969	
6,200.0	6,190.0	6,207.7	6,190.0	14.0	14.9	5.62	328.9	-133.4	221.4	193.2	28.21	7.849	
6,300.0	6,290.0	6,307.7	6,290.0	14.2	15.1	5.62	328.9	-133.4	221.4	192.8	28.64	7.732	
6,331.6	6,321.6	6,339.2	6,321.6	14.3	15.2	5.62	328.9	-133.4	221.4	192.6	28.77	7.695	
6,400.0	6,390.0	6,405.9	6,388.2	14.4	15.3	6.10	329.0	-131.6	221.6	192.6	29.04	7.631	
6,500.0	6,490.0	6,500.0	6,481.4	14.6	15.5	9.38	329.0	-118.7	223.6	194.2	29.37	7.614	
6,516.8	6,506.8	6,516.3	6,497.3	14.7	15.5	10.26	329.1	-115.2	224.3	194.8	29.42	7.623	
6,550.0	6,540.0	6,546.7	6,526.8	14.7	15.5	-77.51	329.1	-107.8	225.8	196.2	29.54	7.642	
6,600.0	6,589.8	6,592.0	6,570.0	14.8	15.6	-74.89	329.2	-94.4	228.4	198.7	29.74	7.682	
6,650.0	6,639.3	6,636.8	6,611.9	14.9	15.6	-72.41	329.3	-78.5	231.4	201.6	29.89	7.742	
6,700.0	6,688.0	6,681.0	6,652.2	15.0	15.7	-70.06	329.5	-60.2	234.8	204.8	30.02	7.821	
6,750.0	6,735.9	6,724.8	6,690.8	15.0	15.7	-67.87	329.6	-39.8	238.3	208.2	30.10	7.918	
6,800.0	6,782.7	6,768.1	6,727.8	15.1	15.7	-65.82	329.8	-17.2	242.0	211.9	30.14	8.030	
6,850.0	6,828.1	6,811.0	6,763.1	15.2	15.8	-63.93	330.0	7.3	245.8	215.7	30.15	8.153	
6,900.0	6,872.0	6,853.6	6,796.5	15.2	15.8	-62.20	330.2	33.6	249.6	219.5	30.14	8.283	
6,950.0	6,914.1	6,895.8	6,828.1	15.3	15.9	-60.61	330.4	61.6	253.4	223.3	30.12	8.414	
7,000.0	6,954.2	6,937.7	6,857.7	15.5	16.0	-59.17	330.6	91.3	257.1	227.0	30.10	8.541	
7,050.0	6,992.1	6,979.4	6,885.4	15.6	16.2	-57.88	330.8	122.4	260.6	230.5	30.10	8.658	
7,100.0	7,027.7	7,020.8	6,911.1	15.9	16.4	-56.73	331.1	154.8	263.9	233.7	30.14	8.755	
7,150.0	7,060.7	7,061.9	6,934.7	16.2	16.8	-55.72	331.3	188.5	266.9	236.7	30.25	8.825	
7,200.0	7,091.0	7,100.0	6,954.8	16.5	17.1	-54.88	331.5	220.8	269.7	239.3	30.42	8.866	
7,250.0	7,118.5	7,143.7	6,975.7	17.0	17.6	-54.08	331.8	259.2	272.2	241.4	30.74	8.853	
7,300.0	7,143.0	7,184.4	6,993.1	17.5	18.1	-53.44	332.1	296.0	274.3	243.1	31.18	8.797	
7,350.0	7,164.4	7,225.0	7,008.3	18.1	18.6	-52.93	332.4	333.6	276.0	244.3	31.76	8.692	
7,400.0	7,182.6	7,265.4	7,021.3	18.8	19.2	-52.54	332.7	371.9	277.4	244.9	32.49	8.538	
7,450.0	7,197.5	7,305.9	7,032.1	19.5	19.9	-52.27	332.9	410.9	278.4	245.0	33.38	8.339	
7,500.0	7,209.0	7,350.0	7,041.3	20.4	20.6	-52.10	333.3	454.0	279.0	244.5	34.49	8.089	
7,503.2	7,209.6	7,350.0	7,041.3	20.4	20.6	-52.10	333.3	454.0	279.0	244.5	34.53	8.079	
7,550.0	7,217.1	7,386.5	7,047.0	21.2	21.3	-52.07	333.5	490.1	279.1	243.5	35.67	7.826	
7,600.0	7,221.8	7,426.9	7,051.1	22.2	22.0	-52.14	333.8	530.3	278.9	241.8	37.04	7.528	
7,641.8	7,223.0	7,460.6	7,052.8	23.0	22.7	-52.28	334.1	563.9	278.3	240.0	38.30	7.267	
7,674.2	7,223.0	7,488.6	7,053.0	23.6	23.2	-52.33	334.3	591.9	278.2	238.9	39.27	7.083	
7,700.0	7,223.0	7,514.4	7,053.0	24.1	23.8	-52.33	334.5	617.7	278.2	238.0	40.10	6.936	
7,800.0	7,223.0	7,614.4	7,053.0	26.3	25.9	-52.32	335.2	717.7	278.1	234.7	43.47	6.399	
7,900.0	7,223.0	7,714.4	7,053.0	28.5	28.1	-52.32	335.9	817.7	278.1	231.1	47.03	5.915	
8,000.0	7,223.0	7,814.4	7,053.0	30.9	30.4	-52.32	336.7	917.7	278.1	227.4	50.75	5.481	
8,100.0	7,223.0	7,914.4	7,053.0	33.3	32.8	-52.32	337.4	1,017.7	278.1	223.6	54.59	5.095	
8,200.0	7,223.0	8,014.4	7,053.0	35.7	35.3	-52.32	338.1	1,117.7	278.1	219.6	58.53	4.752	
8,300.0	7,223.0	8,114.4	7,053.0	38.3	37.8	-52.32	338.9	1,217.7	278.1	215.6	62.55	4.446	
8,400.0	7,223.0	8,214.4	7,053.0	40.8	40.3	-52.32	339.6	1,317.7	278.1	211.5	66.64	4.173	
8,500.0	7,223.0	8,314.4	7,053.0	43.4	42.9	-52.32	340.3	1,417.7	278.1	207.3	70.79	3.929	

CC - Min centre to center distance or convergent point, SF - min separation factor, ES - min ellipse separation

Company:	Synergy Resources	Local Co-ordinate Reference:	Well SRC Wiedeman A-5-3CHZ
Project:	Sec.5-T5N-R66W	TVD Reference:	WELL @ 4796.0ft (RKB -13')
Reference Site:	SRC Wiedeman Pad Sec.5-T5N-R66W	MD Reference:	WELL @ 4796.0ft (RKB -13')
Site Error:	0.0ft	North Reference:	True
Reference Well:	SRC Wiedeman A-5-3CHZ	Survey Calculation Method:	Minimum Curvature
Well Error:	0.0ft	Output errors are at	2.00 sigma
Reference Wellbore	Wellbore #1	Database:	Landmark
Reference Design:	Plan #1 (6-24-14)	Offset TVD Reference:	Offset Datum

Offset Design SRC Wiedeman Pad Sec.5-T5N-R66W - SRC Wiedeman A-5-3NHZ - Wellbore #1 - Plan #1 (6-24-14)													Offset Site Error:	0.0 ft
Survey Program: 0-MWD													Offset Well Error:	0.0 ft
Reference		Offset		Semi Major Axis			Distance							Warning
Measured Depth (ft)	Vertical Depth (ft)	Measured Depth (ft)	Vertical Depth (ft)	Reference (ft)	Offset (ft)	Highside Toolface (°)	Offset Wellbore Centre +N/-S (ft)	+E/-W (ft)	Between Centres (ft)	Between Ellipses (ft)	Minimum Separation (ft)	Separation Factor		
8,600.0	7,223.0	8,414.4	7,053.0	46.0	45.5	-52.32	341.1	1,517.7	278.1	203.2	74.98	3.709		
8,700.0	7,223.0	8,514.4	7,053.0	48.6	48.1	-52.32	341.8	1,617.7	278.1	198.9	79.21	3.511		
8,800.0	7,223.0	8,614.4	7,053.0	51.3	50.8	-52.32	342.5	1,717.7	278.1	194.7	83.47	3.332		
8,900.0	7,223.0	8,714.4	7,053.0	54.0	53.5	-52.32	343.3	1,817.7	278.1	190.4	87.76	3.169		
9,000.0	7,223.0	8,814.4	7,053.0	56.6	56.1	-52.32	344.0	1,917.6	278.1	186.1	92.07	3.021		
9,100.0	7,223.0	8,914.4	7,053.0	59.3	58.8	-52.32	344.7	2,017.6	278.1	181.7	96.41	2.885		
9,200.0	7,223.0	9,014.4	7,053.0	62.0	61.5	-52.32	345.5	2,117.6	278.1	177.4	100.76	2.760		
9,300.0	7,223.0	9,114.4	7,053.0	64.7	64.2	-52.32	346.2	2,217.6	278.1	173.0	105.13	2.646		
9,400.0	7,223.0	9,214.4	7,053.0	67.5	66.9	-52.32	347.0	2,317.6	278.1	168.6	109.51	2.540		
9,500.0	7,223.0	9,314.4	7,053.0	70.2	69.7	-52.32	347.7	2,417.6	278.1	164.2	113.90	2.442		
9,600.0	7,223.0	9,414.4	7,053.0	72.9	72.4	-52.32	348.4	2,517.6	278.1	159.8	118.31	2.351		
9,700.0	7,223.0	9,514.4	7,053.0	75.6	75.1	-52.32	349.2	2,617.6	278.1	155.4	122.72	2.266		
9,800.0	7,223.0	9,614.4	7,053.0	78.4	77.9	-52.32	349.9	2,717.6	278.1	151.0	127.14	2.187		
9,900.0	7,223.0	9,714.4	7,053.0	81.1	80.6	-52.32	350.6	2,817.6	278.1	146.5	131.58	2.114		
10,000.0	7,223.0	9,814.4	7,053.0	83.9	83.4	-52.32	351.4	2,917.6	278.1	142.1	136.01	2.045		
10,100.0	7,223.0	9,914.4	7,053.0	86.6	86.1	-52.32	352.1	3,017.6	278.1	137.6	140.46	1.980		
10,200.0	7,223.0	10,014.4	7,053.0	89.4	88.9	-52.32	352.8	3,117.6	278.1	133.2	144.91	1.919		
10,300.0	7,223.0	10,114.4	7,053.0	92.2	91.6	-52.32	353.6	3,217.6	278.1	128.7	149.36	1.862		
10,400.0	7,223.0	10,214.4	7,053.0	94.9	94.4	-52.32	354.3	3,317.6	278.1	124.3	153.82	1.808		
10,500.0	7,223.0	10,314.4	7,053.0	97.7	97.2	-52.32	355.0	3,417.6	278.1	119.8	158.29	1.757		
10,600.0	7,223.0	10,414.4	7,053.0	100.5	99.9	-52.32	355.8	3,517.6	278.1	115.3	162.76	1.709		
10,700.0	7,223.0	10,514.4	7,053.0	103.2	102.7	-52.31	356.5	3,617.6	278.1	110.9	167.23	1.663		
10,800.0	7,223.0	10,614.4	7,053.0	106.0	105.5	-52.31	357.2	3,717.6	278.1	106.4	171.71	1.620		
10,900.0	7,223.0	10,714.4	7,053.0	108.8	108.2	-52.31	358.0	3,817.6	278.1	101.9	176.19	1.578		
11,000.0	7,223.0	10,814.4	7,053.0	111.6	111.0	-52.31	358.7	3,917.6	278.1	97.4	180.67	1.539		
11,100.0	7,223.0	10,914.4	7,053.0	114.3	113.8	-52.31	359.4	4,017.6	278.1	92.9	185.15	1.502		
11,200.0	7,223.0	11,014.4	7,053.0	117.1	116.6	-52.31	360.2	4,117.6	278.1	88.4	189.64	1.466 Level 3		
11,300.0	7,223.0	11,114.4	7,053.0	119.9	119.4	-52.31	360.9	4,217.6	278.1	83.9	194.13	1.432 Level 3		
11,400.0	7,223.0	11,214.4	7,053.0	122.7	122.1	-52.31	361.7	4,317.6	278.1	79.5	198.62	1.400 Level 3		
11,500.0	7,223.0	11,314.4	7,053.0	125.5	124.9	-52.31	362.4	4,417.6	278.1	75.0	203.12	1.369 Level 3		
11,600.0	7,223.0	11,414.4	7,053.0	128.2	127.7	-52.31	363.1	4,517.6	278.1	70.5	207.61	1.339 Level 3		
11,700.0	7,223.0	11,514.4	7,053.0	131.0	130.5	-52.31	363.9	4,617.6	278.1	66.0	212.11	1.311 Level 3		
11,800.0	7,223.0	11,614.4	7,053.0	133.8	133.3	-52.31	364.6	4,717.6	278.1	61.5	216.61	1.284 Level 3		
11,900.0	7,223.0	11,714.4	7,053.0	136.6	136.1	-52.31	365.3	4,817.6	278.1	57.0	221.11	1.258 Level 3		
12,000.0	7,223.0	11,814.4	7,053.0	139.4	138.8	-52.31	366.1	4,917.6	278.1	52.4	225.61	1.232 Level 2		
12,100.0	7,223.0	11,914.4	7,053.0	142.2	141.6	-52.31	366.8	5,017.6	278.1	47.9	230.11	1.208 Level 2		
12,200.0	7,223.0	12,014.4	7,053.0	145.0	144.4	-52.31	367.5	5,117.6	278.1	43.4	234.62	1.185 Level 2		
12,300.0	7,223.0	12,114.4	7,053.0	147.7	147.2	-52.31	368.3	5,217.6	278.1	38.9	239.12	1.163 Level 2		
12,400.0	7,223.0	12,214.4	7,053.0	150.5	150.0	-52.31	369.0	5,317.6	278.1	34.4	243.63	1.141 Level 2		
12,500.0	7,223.0	12,314.4	7,053.0	153.3	152.8	-52.31	369.7	5,417.6	278.0	29.9	248.14	1.121 Level 2		
12,600.0	7,223.0	12,414.4	7,053.0	156.1	155.6	-52.31	370.5	5,517.6	278.0	25.4	252.65	1.101 Level 2		
12,700.0	7,223.0	12,514.4	7,053.0	158.9	158.4	-52.31	371.2	5,617.5	278.0	20.9	257.16	1.081 Level 2		
12,800.0	7,223.0	12,614.4	7,053.0	161.7	161.2	-52.31	371.9	5,717.5	278.0	16.4	261.67	1.063 Level 2		
12,900.0	7,223.0	12,714.4	7,053.0	164.5	164.0	-52.31	372.7	5,817.5	278.0	11.9	266.18	1.045 Level 2		
13,000.0	7,223.0	12,814.4	7,053.0	167.3	166.8	-52.31	373.4	5,917.5	278.0	7.3	270.70	1.027 Level 2		
13,100.0	7,223.0	12,914.4	7,053.0	170.1	169.5	-52.31	374.1	6,017.5	278.0	2.8	275.21	1.010 Level 2		
13,200.0	7,223.0	13,014.4	7,053.0	172.9	172.3	-52.31	374.9	6,117.5	278.0	-1.7	279.72	0.994 Level 1		
13,300.0	7,223.0	13,114.4	7,053.0	175.7	175.1	-52.31	375.6	6,217.5	278.0	-6.2	284.24	0.978 Level 1		
13,400.0	7,223.0	13,214.4	7,053.0	178.5	177.9	-52.31	376.4	6,317.5	278.0	-10.7	288.75	0.963 Level 1		
13,500.0	7,223.0	13,314.4	7,053.0	181.3	180.7	-52.31	377.1	6,417.5	278.0	-15.2	293.27	0.948 Level 1		
13,600.0	7,223.0	13,414.4	7,053.0	184.1	183.5	-52.31	377.8	6,517.5	278.0	-19.8	297.79	0.934 Level 1		
13,700.0	7,223.0	13,514.4	7,053.0	186.8	186.3	-52.30	378.6	6,617.5	278.0	-24.3	302.30	0.920 Level 1		

CC - Min centre to center distance or convergent point, SF - min separation factor, ES - min ellipse separation

Company:	Synergy Resources	Local Co-ordinate Reference:	Well SRC Wiedeman A-5-3CHZ
Project:	Sec.5-T5N-R66W	TVD Reference:	WELL @ 4796.0ft (RKB -13')
Reference Site:	SRC Wiedeman Pad Sec.5-T5N-R66W	MD Reference:	WELL @ 4796.0ft (RKB -13')
Site Error:	0.0ft	North Reference:	True
Reference Well:	SRC Wiedeman A-5-3CHZ	Survey Calculation Method:	Minimum Curvature
Well Error:	0.0ft	Output errors are at	2.00 sigma
Reference Wellbore	Wellbore #1	Database:	Landmark
Reference Design:	Plan #1 (6-24-14)	Offset TVD Reference:	Offset Datum

Offset Design SRC Wiedeman Pad Sec.5-T5N-R66W - SRC Wiedeman A-5-3NHZ - Wellbore #1 - Plan #1 (6-24-14)													Offset Site Error:	0.0 ft
Survey Program: 0-MWD													Offset Well Error:	0.0 ft
Reference		Offset		Semi Major Axis			Distance							Warning
Measured Depth (ft)	Vertical Depth (ft)	Measured Depth (ft)	Vertical Depth (ft)	Reference (ft)	Offset (ft)	Highside Toolface (°)	Offset Wellbore Centre +N/-S (ft)	+E/-W (ft)	Between Centres (ft)	Between Ellipses (ft)	Minimum Separation (ft)	Separation Factor		
13,800.0	7,223.0	13,614.4	7,053.0	189.6	189.1	-52.30	379.3	6,717.5	278.0	-28.8	306.82	0.906	Level 1	
13,900.0	7,223.0	13,714.4	7,053.0	192.4	191.9	-52.30	380.0	6,817.5	278.0	-33.3	311.34	0.893	Level 1	
14,000.0	7,223.0	13,814.4	7,053.0	195.2	194.7	-52.30	380.8	6,917.5	278.0	-37.8	315.86	0.880	Level 1	
14,100.0	7,223.0	13,914.4	7,053.0	198.0	197.5	-52.30	381.5	7,017.5	278.0	-42.4	320.38	0.868	Level 1	
14,200.0	7,223.0	14,014.4	7,053.0	200.8	200.3	-52.30	382.2	7,117.5	278.0	-46.9	324.90	0.856	Level 1	
14,300.0	7,223.0	14,114.4	7,053.0	203.6	203.1	-52.30	383.0	7,217.5	278.0	-51.4	329.42	0.844	Level 1	
14,400.0	7,223.0	14,214.4	7,053.0	206.4	205.9	-52.30	383.7	7,317.5	278.0	-55.9	333.94	0.833	Level 1	
14,500.0	7,223.0	14,314.4	7,053.0	209.2	208.7	-52.30	384.4	7,417.5	278.0	-60.5	338.46	0.821	Level 1	
14,600.0	7,223.0	14,414.4	7,053.0	212.0	211.5	-52.30	385.2	7,517.5	278.0	-65.0	342.98	0.811	Level 1	
14,700.0	7,223.0	14,514.4	7,053.0	214.8	214.3	-52.30	385.9	7,617.5	278.0	-69.5	347.51	0.800	Level 1	
14,800.0	7,223.0	14,614.4	7,053.0	217.6	217.1	-52.30	386.6	7,717.5	278.0	-74.0	352.03	0.790	Level 1	
14,900.0	7,223.0	14,714.4	7,053.0	220.4	219.9	-52.30	387.4	7,817.5	278.0	-78.6	356.55	0.780	Level 1	
15,000.0	7,223.0	14,814.4	7,053.0	223.2	222.7	-52.30	388.1	7,917.5	278.0	-83.1	361.07	0.770	Level 1	
15,100.0	7,223.0	14,914.4	7,053.0	226.0	225.5	-52.30	388.8	8,017.5	278.0	-87.6	365.60	0.760	Level 1	
15,200.0	7,223.0	15,014.4	7,053.0	228.8	228.3	-52.30	389.6	8,117.5	278.0	-92.1	370.12	0.751	Level 1	
15,300.0	7,223.0	15,114.4	7,053.0	231.6	231.1	-52.30	390.3	8,217.5	278.0	-96.7	374.65	0.742	Level 1	
15,400.0	7,223.0	15,214.4	7,053.0	234.4	233.9	-52.30	391.1	8,317.5	278.0	-101.2	379.17	0.733	Level 1	
15,500.0	7,223.0	15,314.4	7,053.0	237.2	236.7	-52.30	391.8	8,417.5	278.0	-105.7	383.69	0.724	Level 1	
15,600.0	7,223.0	15,414.4	7,053.0	240.0	239.5	-52.30	392.5	8,517.5	278.0	-110.2	388.22	0.716	Level 1	
15,700.0	7,223.0	15,514.4	7,053.0	242.8	242.3	-52.30	393.3	8,617.5	278.0	-114.8	392.74	0.708	Level 1	
15,800.0	7,223.0	15,614.4	7,053.0	245.6	245.1	-52.30	394.0	8,717.5	278.0	-119.3	397.27	0.700	Level 1	
15,900.0	7,223.0	15,714.4	7,053.0	248.4	247.9	-52.30	394.7	8,817.5	278.0	-123.8	401.79	0.692	Level 1	
16,000.0	7,223.0	15,814.4	7,053.0	251.2	250.7	-52.30	395.5	8,917.5	278.0	-128.3	406.32	0.684	Level 1	
16,100.0	7,223.0	15,914.4	7,053.0	254.0	253.5	-52.30	396.2	9,017.5	278.0	-132.9	410.84	0.677	Level 1	
16,200.0	7,223.0	16,014.4	7,053.0	256.8	256.3	-52.30	396.9	9,117.5	278.0	-137.4	415.37	0.669	Level 1	
16,300.0	7,223.0	16,114.4	7,053.0	259.6	259.1	-52.30	397.7	9,217.5	278.0	-141.9	419.90	0.662	Level 1	
16,400.0	7,223.0	16,214.4	7,053.0	262.4	261.9	-52.30	398.4	9,317.4	278.0	-146.5	424.42	0.655	Level 1	
16,500.0	7,223.0	16,314.4	7,053.0	265.2	264.7	-52.30	399.1	9,417.4	278.0	-151.0	428.95	0.648	Level 1	
16,600.0	7,223.0	16,414.4	7,053.0	268.0	267.5	-52.29	399.9	9,517.4	278.0	-155.5	433.48	0.641	Level 1	
16,700.0	7,223.0	16,514.4	7,053.0	270.8	270.3	-52.29	400.6	9,617.4	278.0	-160.0	438.00	0.635	Level 1	
16,800.0	7,223.0	16,614.4	7,053.0	273.6	273.1	-52.29	401.3	9,717.4	278.0	-164.6	442.53	0.628	Level 1	
16,900.0	7,223.0	16,714.4	7,053.0	276.4	275.9	-52.29	402.1	9,817.4	278.0	-169.1	447.06	0.622	Level 1	
17,000.0	7,223.0	16,814.4	7,053.0	279.2	278.7	-52.29	402.8	9,917.4	278.0	-173.6	451.58	0.616	Level 1	
17,021.2	7,223.0	16,835.5	7,053.0	279.8	279.3	-52.29	403.0	9,938.6	278.0	-174.6	452.54	0.614	Level 1, ES, SF	

Company:	Synergy Resources	Local Co-ordinate Reference:	Well SRC Wiedeman A-5-3CHZ
Project:	Sec.5-T5N-R66W	TVD Reference:	WELL @ 4796.0ft (RKB -13')
Reference Site:	SRC Wiedeman Pad Sec.5-T5N-R66W	MD Reference:	WELL @ 4796.0ft (RKB -13')
Site Error:	0.0ft	North Reference:	True
Reference Well:	SRC Wiedeman A-5-3CHZ	Survey Calculation Method:	Minimum Curvature
Well Error:	0.0ft	Output errors are at	2.00 sigma
Reference Wellbore	Wellbore #1	Database:	Landmark
Reference Design:	Plan #1 (6-24-14)	Offset TVD Reference:	Offset Datum

Offset Design SRC Wiedeman Pad Sec.5-T5N-R66W - SRC Wiedeman A-5-4NHZ - Wellbore #1 - Plan #1 (6-24-14)													Offset Site Error:	0.0 ft
Survey Program: 0-MWD													Offset Well Error:	0.0 ft
Reference		Offset		Semi Major Axis			Distance							Warning
Measured Depth (ft)	Vertical Depth (ft)	Measured Depth (ft)	Vertical Depth (ft)	Reference (ft)	Offset (ft)	Highside Toolface (°)	Offset Wellbore Centre +N/-S (ft)	+E/-W (ft)	Between Centres (ft)	Between Ellipses (ft)	Minimum Separation (ft)	Separation Factor		
0.0	0.0	0.0	0.0	0.0	0.0	-173.62	-14.9	-1.7	15.0	15.0	0.00	N/A		
100.0	100.0	100.0	100.0	0.1	0.1	-173.62	-14.9	-1.7	15.0	14.8	0.22	66.869		
200.0	200.0	200.0	200.0	0.3	0.3	-173.62	-14.9	-1.7	15.0	14.4	0.67	22.290		
300.0	300.0	300.0	300.0	0.6	0.6	-173.62	-14.9	-1.7	15.0	13.9	1.12	13.374		
400.0	400.0	400.0	400.0	0.8	0.8	-173.62	-14.9	-1.7	15.0	13.5	1.57	9.553		
500.0	500.0	500.0	500.0	1.0	1.0	-173.62	-14.9	-1.7	15.0	13.0	2.02	7.430		
600.0	600.0	600.0	600.0	1.2	1.2	-173.62	-14.9	-1.7	15.0	12.6	2.47	6.079		
700.0	700.0	700.0	700.0	1.5	1.5	-173.62	-14.9	-1.7	15.0	12.1	2.92	5.144		
800.0	800.0	800.0	800.0	1.7	1.7	-173.62	-14.9	-1.7	15.0	11.7	3.37	4.458		
900.0	900.0	900.0	900.0	1.9	1.9	-173.62	-14.9	-1.7	15.0	11.2	3.82	3.933		
1,000.0	1,000.0	1,000.0	1,000.0	2.1	2.1	-173.62	-14.9	-1.7	15.0	10.8	4.27	3.519		
1,100.0	1,100.0	1,100.0	1,100.0	2.4	2.4	-173.62	-14.9	-1.7	15.0	10.3	4.72	3.184		
1,200.0	1,200.0	1,200.0	1,200.0	2.6	2.6	-173.62	-14.9	-1.7	15.0	9.9	5.17	2.907		
1,300.0	1,300.0	1,300.0	1,300.0	2.8	2.8	-173.62	-14.9	-1.7	15.0	9.4	5.62	2.675		
1,400.0	1,400.0	1,400.0	1,400.0	3.0	3.0	-173.62	-14.9	-1.7	15.0	9.0	6.07	2.477 CC, ES		
1,500.0	1,500.0	1,499.5	1,499.5	3.3	3.2	-170.36	-16.3	-2.8	16.5	10.0	6.49	2.544		
1,600.0	1,600.0	1,598.8	1,598.6	3.5	3.4	-163.42	-20.3	-6.0	21.2	14.3	6.89	3.074		
1,700.0	1,700.0	1,697.8	1,697.2	3.7	3.6	-156.94	-26.9	-11.4	29.3	22.0	7.30	4.015		
1,800.0	1,800.0	1,797.3	1,796.3	3.9	3.8	-152.89	-34.4	-17.6	38.8	31.1	7.72	5.030		
1,900.0	1,900.0	1,896.8	1,895.3	4.2	4.0	-150.44	-42.0	-23.8	48.5	40.3	8.15	5.948		
2,000.0	2,000.0	1,996.3	1,994.3	4.4	4.2	-148.81	-49.5	-30.0	58.2	49.6	8.59	6.774		
2,100.0	2,100.0	2,095.8	2,093.4	4.6	4.5	-93.92	-57.1	-36.2	68.0	59.0	8.98	7.570		
2,200.0	2,199.8	2,195.2	2,192.3	4.8	4.7	-96.51	-64.6	-42.4	78.2	68.8	9.41	8.309		
2,300.0	2,299.5	2,294.4	2,291.0	5.0	5.0	-100.66	-72.2	-48.5	89.1	79.2	9.84	9.048		
2,321.9	2,321.3	2,316.2	2,312.7	5.1	5.0	-101.72	-73.8	-49.9	91.6	81.7	9.94	9.214		
2,400.0	2,398.8	2,393.4	2,389.5	5.3	5.2	-105.35	-79.7	-54.7	101.0	90.7	10.30	9.807		
2,500.0	2,498.2	2,492.4	2,488.0	5.5	5.5	-109.12	-87.2	-60.8	113.4	102.7	10.76	10.543		
2,600.0	2,597.6	2,591.4	2,586.5	5.8	5.7	-112.13	-94.7	-67.0	126.3	115.1	11.23	11.244		
2,700.0	2,696.9	2,690.3	2,685.0	6.0	6.0	-114.58	-102.2	-73.1	139.4	127.7	11.71	11.905		
2,800.0	2,796.3	2,789.3	2,783.5	6.3	6.3	-116.61	-109.7	-79.3	152.8	140.6	12.20	12.524		
2,900.0	2,895.7	2,888.3	2,882.0	6.5	6.5	-118.31	-117.3	-85.4	166.3	153.6	12.69	13.103		
3,000.0	2,995.0	2,987.3	2,980.5	6.8	6.8	-119.76	-124.8	-91.6	179.9	166.7	13.19	13.643		
3,100.0	3,094.4	3,086.2	3,079.0	7.1	7.1	-121.00	-132.3	-97.7	193.6	180.0	13.69	14.148		
3,200.0	3,193.8	3,185.2	3,177.5	7.3	7.3	-122.07	-139.8	-103.9	207.5	193.3	14.19	14.618		
3,300.0	3,293.2	3,284.2	3,276.0	7.6	7.6	-123.02	-147.3	-110.0	221.3	206.6	14.70	15.058		
3,400.0	3,392.5	3,383.1	3,374.5	7.9	7.9	-123.85	-154.8	-116.2	235.2	220.0	15.21	15.468		
3,500.0	3,491.9	3,482.1	3,473.0	8.2	8.2	-124.59	-162.3	-122.3	249.2	233.5	15.72	15.853		
3,600.0	3,591.3	3,581.1	3,571.5	8.4	8.4	-125.25	-169.9	-128.5	263.2	247.0	16.23	16.213		
3,688.0	3,678.7	3,668.2	3,658.2	8.7	8.7	-125.77	-176.5	-133.9	275.5	258.9	16.69	16.512		
3,700.0	3,690.6	3,680.1	3,670.0	8.7	8.7	-125.86	-177.4	-134.6	277.2	260.5	16.75	16.552		
3,800.0	3,790.2	3,779.2	3,768.7	8.9	9.0	-126.26	-184.9	-140.8	290.0	272.8	17.21	16.848		
3,900.0	3,890.1	3,878.6	3,867.6	9.1	9.3	-126.07	-192.4	-147.0	300.7	283.1	17.66	17.031		
4,010.0	4,000.0	3,988.1	3,976.5	9.3	9.6	-179.75	-200.8	-153.8	310.2	292.2	18.05	17.187		
4,100.0	4,090.0	4,077.7	4,065.6	9.5	9.8	-179.23	-207.6	-159.3	317.1	298.6	18.47	17.166		
4,200.0	4,190.0	4,177.2	4,164.7	9.7	10.1	-178.16	-215.1	-165.5	324.9	305.9	18.96	17.130		
4,300.0	4,290.0	4,276.7	4,263.7	9.9	10.4	-177.13	-222.7	-171.7	332.7	313.3	19.46	17.099		
4,400.0	4,390.0	4,376.2	4,362.8	10.1	10.7	-176.15	-230.2	-177.9	340.7	320.7	19.95	17.073		
4,500.0	4,490.0	4,480.5	4,466.6	10.3	11.0	-175.21	-237.8	-184.1	348.4	328.0	20.45	17.038		
4,600.0	4,590.0	4,591.6	4,577.5	10.5	11.2	-174.58	-243.2	-188.5	353.6	332.7	20.90	16.913		
4,700.0	4,690.0	4,703.1	4,688.9	10.7	11.4	-174.34	-245.2	-190.1	355.5	334.2	21.33	16.667		
4,800.0	4,790.0	4,804.2	4,790.0	11.0	11.6	-174.34	-245.2	-190.1	355.5	333.8	21.73	16.358		
4,900.0	4,890.0	4,904.2	4,890.0	11.2	11.8	-174.34	-245.2	-190.1	355.5	333.4	22.13	16.064		

CC - Min centre to center distance or convergent point, SF - min separation factor, ES - min ellipse separation

Company:	Synergy Resources	Local Co-ordinate Reference:	Well SRC Wiedeman A-5-3CHZ
Project:	Sec.5-T5N-R66W	TVD Reference:	WELL @ 4796.0ft (RKB -13')
Reference Site:	SRC Wiedeman Pad Sec.5-T5N-R66W	MD Reference:	WELL @ 4796.0ft (RKB -13')
Site Error:	0.0ft	North Reference:	True
Reference Well:	SRC Wiedeman A-5-3CHZ	Survey Calculation Method:	Minimum Curvature
Well Error:	0.0ft	Output errors are at	2.00 sigma
Reference Wellbore	Wellbore #1	Database:	Landmark
Reference Design:	Plan #1 (6-24-14)	Offset TVD Reference:	Offset Datum

Offset Design SRC Wiedeman Pad Sec.5-T5N-R66W - SRC Wiedeman A-5-4NHZ - Wellbore #1 - Plan #1 (6-24-14)													Offset Site Error:	0.0 ft
Survey Program: 0-MWD													Offset Well Error:	0.0 ft
Reference		Offset		Semi Major Axis			Distance							Warning
Measured Depth (ft)	Vertical Depth (ft)	Measured Depth (ft)	Vertical Depth (ft)	Reference (ft)	Offset (ft)	Highside Toolface (°)	Offset Wellbore Centre +N/-S (ft)	+E/-W (ft)	Between Centres (ft)	Between Ellipses (ft)	Minimum Separation (ft)	Separation Factor		
5,000.0	4,990.0	5,004.2	4,990.0	11.4	11.9	-174.34	-245.2	-190.1	355.5	333.0	22.53	15.779		
5,100.0	5,090.0	5,104.2	5,090.0	11.6	12.1	-174.34	-245.2	-190.1	355.5	332.6	22.93	15.503		
5,200.0	5,190.0	5,204.2	5,190.0	11.8	12.3	-174.34	-245.2	-190.1	355.5	332.2	23.34	15.235		
5,300.0	5,290.0	5,304.2	5,290.0	12.0	12.5	-174.34	-245.2	-190.1	355.5	331.8	23.74	14.976		
5,400.0	5,390.0	5,404.2	5,390.0	12.2	12.7	-174.34	-245.2	-190.1	355.5	331.4	24.15	14.724		
5,500.0	5,490.0	5,504.2	5,490.0	12.5	12.8	-174.34	-245.2	-190.1	355.5	331.0	24.55	14.480		
5,600.0	5,590.0	5,604.2	5,590.0	12.7	13.0	-174.34	-245.2	-190.1	355.5	330.6	24.96	14.242		
5,700.0	5,690.0	5,704.2	5,690.0	12.9	13.2	-174.34	-245.2	-190.1	355.5	330.2	25.37	14.012		
5,800.0	5,790.0	5,804.2	5,790.0	13.1	13.4	-174.34	-245.2	-190.1	355.5	329.7	25.78	13.789		
5,900.0	5,890.0	5,904.2	5,890.0	13.3	13.6	-174.34	-245.2	-190.1	355.5	329.3	26.20	13.571		
6,000.0	5,990.0	6,004.2	5,990.0	13.5	13.8	-174.34	-245.2	-190.1	355.5	328.9	26.61	13.360		
6,100.0	6,090.0	6,104.2	6,090.0	13.7	14.0	-174.34	-245.2	-190.1	355.5	328.5	27.03	13.155		
6,200.0	6,190.0	6,204.2	6,190.0	14.0	14.2	-174.34	-245.2	-190.1	355.5	328.1	27.44	12.956		
6,300.0	6,290.0	6,304.2	6,290.0	14.2	14.4	-174.34	-245.2	-190.1	355.5	327.7	27.86	12.762		
6,400.0	6,390.0	6,407.3	6,393.0	14.4	14.5	-174.70	-245.2	-187.9	355.3	327.0	28.27	12.567		
6,500.0	6,490.0	6,510.7	6,495.2	14.6	14.7	-177.19	-244.9	-172.4	354.0	325.3	28.65	12.357		
6,516.8	6,506.8	6,527.5	6,511.5	14.7	14.7	-177.83	-244.9	-168.5	353.8	325.1	28.71	12.323		
6,550.0	6,540.0	6,560.4	6,543.3	14.7	14.7	91.32	-244.7	-159.8	353.4	324.6	28.77	12.282		
6,600.0	6,589.8	6,609.3	6,589.5	14.8	14.8	89.42	-244.5	-144.1	353.2	324.3	28.93	12.209		
6,601.8	6,591.7	6,611.0	6,591.2	14.8	14.8	89.35	-244.5	-143.5	353.2	324.3	28.93	12.207		
6,650.0	6,639.3	6,657.3	6,633.9	14.9	14.8	87.53	-244.2	-125.6	353.4	324.3	29.07	12.155		
6,700.0	6,688.0	6,704.7	6,676.3	15.0	14.8	85.66	-243.9	-104.6	353.9	324.7	29.21	12.116		
6,750.0	6,735.9	6,751.3	6,716.6	15.0	14.9	83.83	-243.6	-81.2	354.8	325.5	29.35	12.090		
6,800.0	6,782.7	6,797.2	6,754.7	15.1	14.9	82.05	-243.2	-55.6	356.0	326.5	29.49	12.072		
6,850.0	6,828.1	6,842.6	6,790.7	15.2	14.9	80.33	-242.7	-28.0	357.5	327.9	29.65	12.057		
6,900.0	6,872.0	6,887.4	6,824.4	15.2	15.0	78.66	-242.3	1.5	359.3	329.5	29.84	12.042		
6,950.0	6,914.1	6,931.6	6,855.9	15.3	15.0	77.06	-241.8	32.6	361.3	331.2	30.06	12.020		
7,000.0	6,954.2	6,975.4	6,885.1	15.5	15.2	75.54	-241.3	65.2	363.4	333.1	30.32	11.987		
7,050.0	6,992.1	7,018.7	6,911.9	15.6	15.4	74.10	-240.8	99.2	365.7	335.0	30.63	11.936		
7,100.0	7,027.7	7,061.7	6,936.5	15.9	15.8	72.74	-240.3	134.4	368.0	337.0	31.02	11.862		
7,150.0	7,060.7	7,104.2	6,958.6	16.2	16.2	71.46	-239.7	170.7	370.3	338.9	31.48	11.763		
7,200.0	7,091.0	7,150.0	6,980.1	16.5	16.7	70.19	-239.1	211.2	372.7	340.6	32.07	11.623		
7,250.0	7,118.5	7,188.2	6,996.0	17.0	17.2	69.18	-238.6	245.9	375.0	342.3	32.71	11.465		
7,300.0	7,143.0	7,229.8	7,011.1	17.5	17.7	68.18	-238.0	284.6	377.2	343.7	33.48	11.266		
7,350.0	7,164.4	7,271.1	7,023.9	18.1	18.3	67.27	-237.4	323.9	379.3	344.9	34.36	11.037		
7,400.0	7,182.6	7,312.2	7,034.4	18.8	19.0	66.46	-236.8	363.7	381.2	345.8	35.36	10.780		
7,450.0	7,197.5	7,350.0	7,041.9	19.5	19.6	65.78	-236.3	400.6	383.0	346.5	36.43	10.512		
7,500.0	7,209.0	7,393.8	7,048.3	20.4	20.4	65.11	-235.6	444.0	384.5	346.8	37.70	10.198		
7,550.0	7,217.1	7,434.4	7,051.8	21.2	21.2	64.58	-235.0	484.4	385.7	346.7	39.03	9.883		
7,600.0	7,221.8	7,476.0	7,053.0	22.2	22.0	64.13	-234.4	526.0	386.8	346.3	40.47	9.558		
7,641.8	7,223.0	7,516.4	7,053.0	23.0	22.9	63.94	-233.8	566.3	387.0	345.1	41.89	9.240		
7,700.0	7,223.0	7,574.6	7,053.0	24.1	24.1	63.91	-232.9	624.6	386.6	342.6	44.03	8.780		
7,800.0	7,223.0	7,674.6	7,053.0	26.3	26.3	63.86	-231.4	724.5	385.9	338.0	47.91	8.055		
7,900.0	7,223.0	7,774.6	7,053.0	28.5	28.6	63.81	-229.8	824.5	385.2	333.2	51.99	7.410		
8,000.0	7,223.0	7,874.6	7,053.0	30.9	31.0	63.76	-228.3	924.5	384.5	328.3	56.22	6.840		
8,100.0	7,223.0	7,974.6	7,053.0	33.3	33.4	63.71	-226.8	1,024.5	383.8	323.2	60.58	6.336		
8,200.0	7,223.0	8,074.6	7,053.0	35.7	36.0	63.66	-225.3	1,124.5	383.1	318.1	65.03	5.892		
8,300.0	7,223.0	8,174.6	7,053.0	38.3	38.5	63.61	-223.8	1,224.5	382.4	312.9	69.56	5.498		
8,400.0	7,223.0	8,274.6	7,053.0	40.8	41.1	63.55	-222.3	1,324.5	381.7	307.6	74.15	5.148		
8,500.0	7,223.0	8,374.6	7,053.0	43.4	43.7	63.50	-220.8	1,424.4	381.0	302.2	78.79	4.836		
8,600.0	7,223.0	8,474.6	7,053.0	46.0	46.3	63.45	-219.3	1,524.4	380.3	296.9	83.48	4.556		
8,700.0	7,223.0	8,574.6	7,053.0	48.6	49.0	63.40	-217.7	1,624.4	379.7	291.5	88.19	4.305		

CC - Min centre to center distance or convergent point, SF - min separation factor, ES - min ellipse separation

Company:	Synergy Resources	Local Co-ordinate Reference:	Well SRC Wiedeman A-5-3CHZ
Project:	Sec.5-T5N-R66W	TVD Reference:	WELL @ 4796.0ft (RKB -13')
Reference Site:	SRC Wiedeman Pad Sec.5-T5N-R66W	MD Reference:	WELL @ 4796.0ft (RKB -13')
Site Error:	0.0ft	North Reference:	True
Reference Well:	SRC Wiedeman A-5-3CHZ	Survey Calculation Method:	Minimum Curvature
Well Error:	0.0ft	Output errors are at	2.00 sigma
Reference Wellbore	Wellbore #1	Database:	Landmark
Reference Design:	Plan #1 (6-24-14)	Offset TVD Reference:	Offset Datum

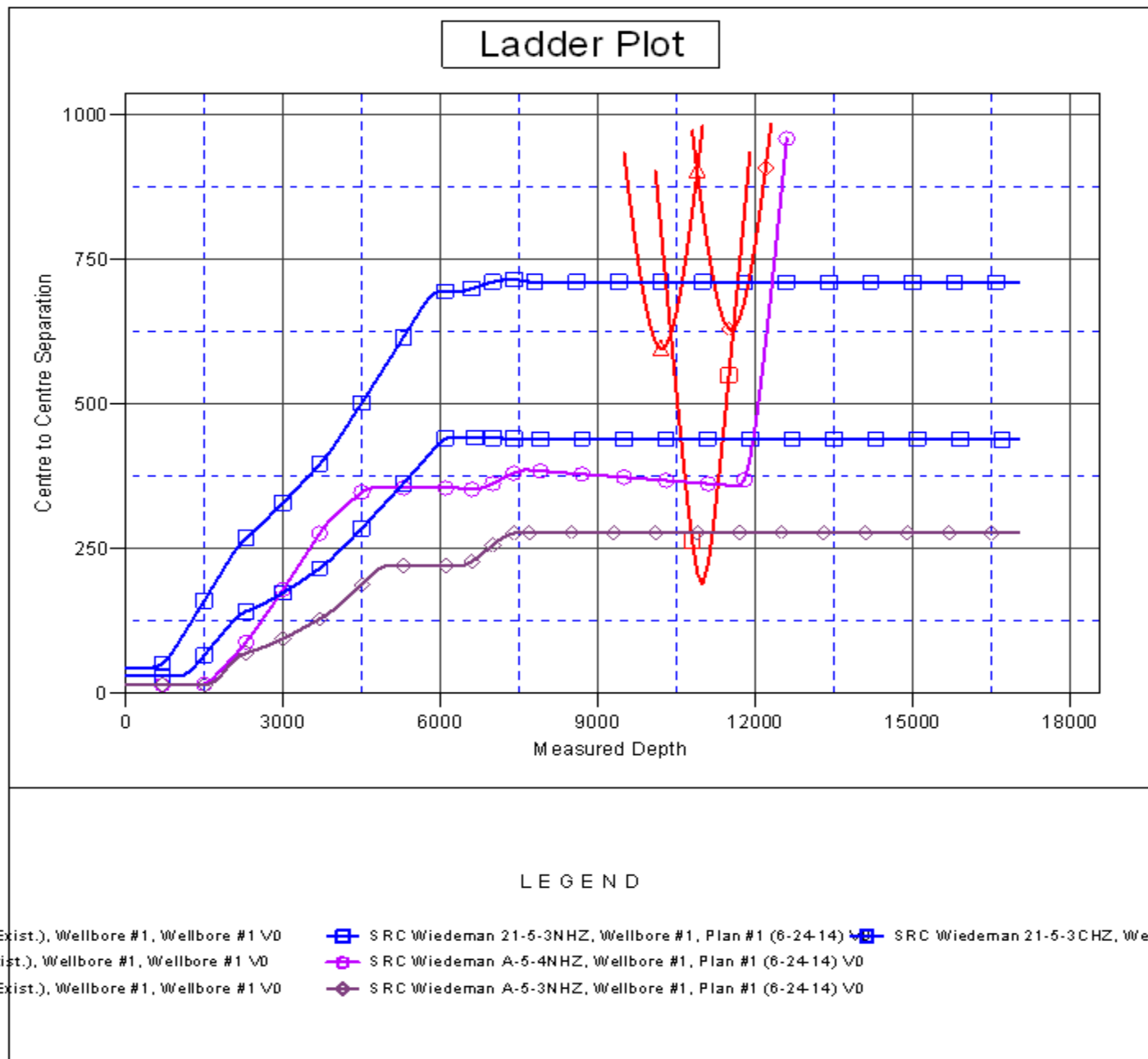
Offset Design SRC Wiedeman Pad Sec.5-T5N-R66W - SRC Wiedeman A-5-4NHZ - Wellbore #1 - Plan #1 (6-24-14)													Offset Site Error:	0.0 ft
Survey Program: 0-MWD													Offset Well Error:	0.0 ft
Reference		Offset		Semi Major Axis			Distance							Warning
Measured Depth (ft)	Vertical Depth (ft)	Measured Depth (ft)	Vertical Depth (ft)	Reference (ft)	Offset (ft)	Highside Toolface (°)	Offset Wellbore Centre +N/-S (ft)	+E/-W (ft)	Between Centres (ft)	Between Ellipses (ft)	Minimum Separation (ft)	Separation Factor		
8,800.0	7,223.0	8,674.6	7,053.0	51.3	51.6	63.35	-216.2	1,724.4	379.0	286.0	92.94	4.078		
8,900.0	7,223.0	8,774.5	7,053.0	54.0	54.3	63.29	-214.7	1,824.4	378.3	280.6	97.71	3.871		
9,000.0	7,223.0	8,874.5	7,053.0	56.6	57.0	63.24	-213.2	1,924.4	377.6	275.1	102.49	3.684		
9,100.0	7,223.0	8,974.5	7,053.0	59.3	59.7	63.19	-211.7	2,024.4	376.9	269.6	107.30	3.513		
9,200.0	7,223.0	9,074.5	7,053.0	62.0	62.4	63.13	-210.2	2,124.3	376.2	264.1	112.11	3.355		
9,300.0	7,223.0	9,174.5	7,053.0	64.7	65.1	63.08	-208.7	2,224.3	375.5	258.6	116.94	3.211		
9,400.0	7,223.0	9,274.5	7,053.0	67.5	67.9	63.03	-207.1	2,324.3	374.8	253.0	121.78	3.078		
9,500.0	7,223.0	9,374.5	7,053.0	70.2	70.6	62.97	-205.6	2,424.3	374.1	247.5	126.62	2.955		
9,600.0	7,223.0	9,474.5	7,053.0	72.9	73.3	62.92	-204.1	2,524.3	373.4	242.0	131.47	2.840		
9,700.0	7,223.0	9,574.5	7,053.0	75.6	76.1	62.86	-202.6	2,624.3	372.7	236.4	136.33	2.734		
9,800.0	7,223.0	9,674.5	7,053.0	78.4	78.8	62.81	-201.1	2,724.3	372.0	230.9	141.19	2.635		
9,900.0	7,223.0	9,774.5	7,053.0	81.1	81.6	62.76	-199.6	2,824.2	371.4	225.3	146.05	2.543		
10,000.0	7,223.0	9,874.5	7,053.0	83.9	84.3	62.70	-198.1	2,924.2	370.7	219.8	150.91	2.456		
10,100.0	7,223.0	9,974.5	7,053.0	86.6	87.1	62.65	-196.6	3,024.2	370.0	214.2	155.78	2.375		
10,200.0	7,223.0	10,074.5	7,053.0	89.4	89.9	62.59	-195.0	3,124.2	369.3	208.6	160.64	2.299		
10,300.0	7,223.0	10,174.5	7,053.0	92.2	92.6	62.53	-193.5	3,224.2	368.6	203.1	165.51	2.227		
10,400.0	7,223.0	10,274.5	7,053.0	94.9	95.4	62.48	-192.0	3,324.2	367.9	197.5	170.37	2.159		
10,500.0	7,223.0	10,374.5	7,053.0	97.7	98.2	62.42	-190.5	3,424.2	367.2	192.0	175.24	2.096		
10,600.0	7,223.0	10,474.5	7,053.0	100.5	100.9	62.37	-189.0	3,524.1	366.5	186.4	180.10	2.035		
10,700.0	7,223.0	10,574.5	7,053.0	103.2	103.7	62.31	-187.5	3,624.1	365.9	180.9	184.96	1.978		
10,800.0	7,223.0	10,674.5	7,053.0	106.0	106.5	62.25	-186.0	3,724.1	365.2	175.3	189.82	1.924		
10,900.0	7,223.0	10,774.5	7,053.0	108.8	109.2	62.20	-184.5	3,824.1	364.5	169.8	194.68	1.872		
11,000.0	7,223.0	10,874.5	7,053.0	111.6	112.0	62.14	-182.9	3,924.1	363.8	164.3	199.54	1.823		
11,100.0	7,223.0	10,974.5	7,053.0	114.3	114.8	62.08	-181.4	4,024.1	363.1	158.7	204.39	1.777		
11,200.0	7,223.0	11,074.5	7,053.0	117.1	117.6	62.03	-179.9	4,124.1	362.4	153.2	209.24	1.732		
11,300.0	7,223.0	11,174.5	7,053.0	119.9	120.4	61.97	-178.4	4,224.0	361.7	147.6	214.09	1.690		
11,400.0	7,223.0	11,274.5	7,053.0	122.7	123.1	61.91	-176.9	4,324.0	361.1	142.1	218.93	1.649		
11,500.0	7,223.0	11,374.5	7,053.0	125.5	125.9	61.85	-175.4	4,424.0	360.4	136.6	223.77	1.610		
11,600.0	7,223.0	11,474.5	7,053.0	128.2	128.7	61.79	-173.9	4,524.0	359.7	131.1	228.61	1.573		
11,700.0	7,223.0	11,574.5	7,053.0	131.0	131.5	61.74	-172.3	4,624.0	359.0	125.6	233.44	1.538		
11,708.4	7,223.0	11,582.0	7,053.0	131.3	131.7	61.73	-172.2	4,631.5	358.9	125.1	233.83	1.535 SF		
11,800.0	7,223.0	11,582.0	7,053.0	133.8	131.7	61.73	-172.2	4,631.5	370.1	134.0	236.09	1.567		
11,900.0	7,223.0	11,582.0	7,053.0	136.6	131.7	61.73	-172.2	4,631.5	406.1	167.6	238.57	1.702		
12,000.0	7,223.0	11,582.0	7,053.0	139.4	131.7	61.73	-172.2	4,631.5	461.5	220.4	241.04	1.914		
12,100.0	7,223.0	11,582.0	7,053.0	142.2	131.7	61.73	-172.2	4,631.5	530.0	286.5	243.52	2.177		
12,200.0	7,223.0	11,582.0	7,053.0	145.0	131.7	61.73	-172.2	4,631.5	607.4	361.4	246.00	2.469		
12,300.0	7,223.0	11,582.0	7,053.0	147.7	131.7	61.73	-172.2	4,631.5	690.6	442.1	248.48	2.779		
12,400.0	7,223.0	11,582.0	7,053.0	150.5	131.7	61.73	-172.2	4,631.5	777.8	526.8	250.95	3.099		
12,500.0	7,223.0	11,582.0	7,053.0	153.3	131.7	61.73	-172.2	4,631.5	867.7	614.3	253.43	3.424		
12,600.0	7,223.0	11,582.0	7,053.0	156.1	131.7	61.73	-172.2	4,631.5	959.7	703.7	255.91	3.750		

Company: Synergy Resources
Project: Sec.5-T5N-R66W
Reference Site: SRC Wiedeman Pad Sec.5-T5N-R66W
Site Error: 0.0ft
Reference Well: SRC Wiedeman A-5-3CHZ
Well Error: 0.0ft
Reference Wellbore: Wellbore #1
Reference Design: Plan #1 (6-24-14)

Local Co-ordinate Reference: Well SRC Wiedeman A-5-3CHZ
TVD Reference: WELL @ 4796.0ft (RKB -13')
MD Reference: WELL @ 4796.0ft (RKB -13')
North Reference: True
Survey Calculation Method: Minimum Curvature
Output errors are at 2.00 sigma
Database: Landmark
Offset TVD Reference: Offset Datum

Reference Depths are relative to WELL @ 4796.0ft (RKB -13')
Offset Depths are relative to Offset Datum
Central Meridian is -105.500000 °

Coordinates are relative to: SRC Wiedeman A-5-3CHZ
Coordinate System is US State Plane 1983, Colorado Northern Zone
Grid Convergence at Surface is: 0.45°



Company:	Synergy Resources	Local Co-ordinate Reference:	Well SRC Wiedeman A-5-3CHZ
Project:	Sec.5-T5N-R66W	TVD Reference:	WELL @ 4796.0ft (RKB -13')
Reference Site:	SRC Wiedeman Pad Sec.5-T5N-R66W	MD Reference:	WELL @ 4796.0ft (RKB -13')
Site Error:	0.0ft	North Reference:	True
Reference Well:	SRC Wiedeman A-5-3CHZ	Survey Calculation Method:	Minimum Curvature
Well Error:	0.0ft	Output errors are at	2.00 sigma
Reference Wellbore	Wellbore #1	Database:	Landmark
Reference Design:	Plan #1 (6-24-14)	Offset TVD Reference:	Offset Datum

Reference Depths are relative to WELL @ 4796.0ft (RKB -13')
Offset Depths are relative to Offset Datum
Central Meridian is -105.500000 °

Coordinates are relative to: SRC Wiedeman A-5-3CHZ
Coordinate System is US State Plane 1983, Colorado Northern Zone
Grid Convergence at Surface is: 0.45°

