

WPX Energy Rocky Mtn LLC

Savage RWF 313-25

API #05-045-21987-00

1655' FSL x 2294' FWL (NESW) - SHL

2479' FSL x 677' FWL (NWSW) - BHL

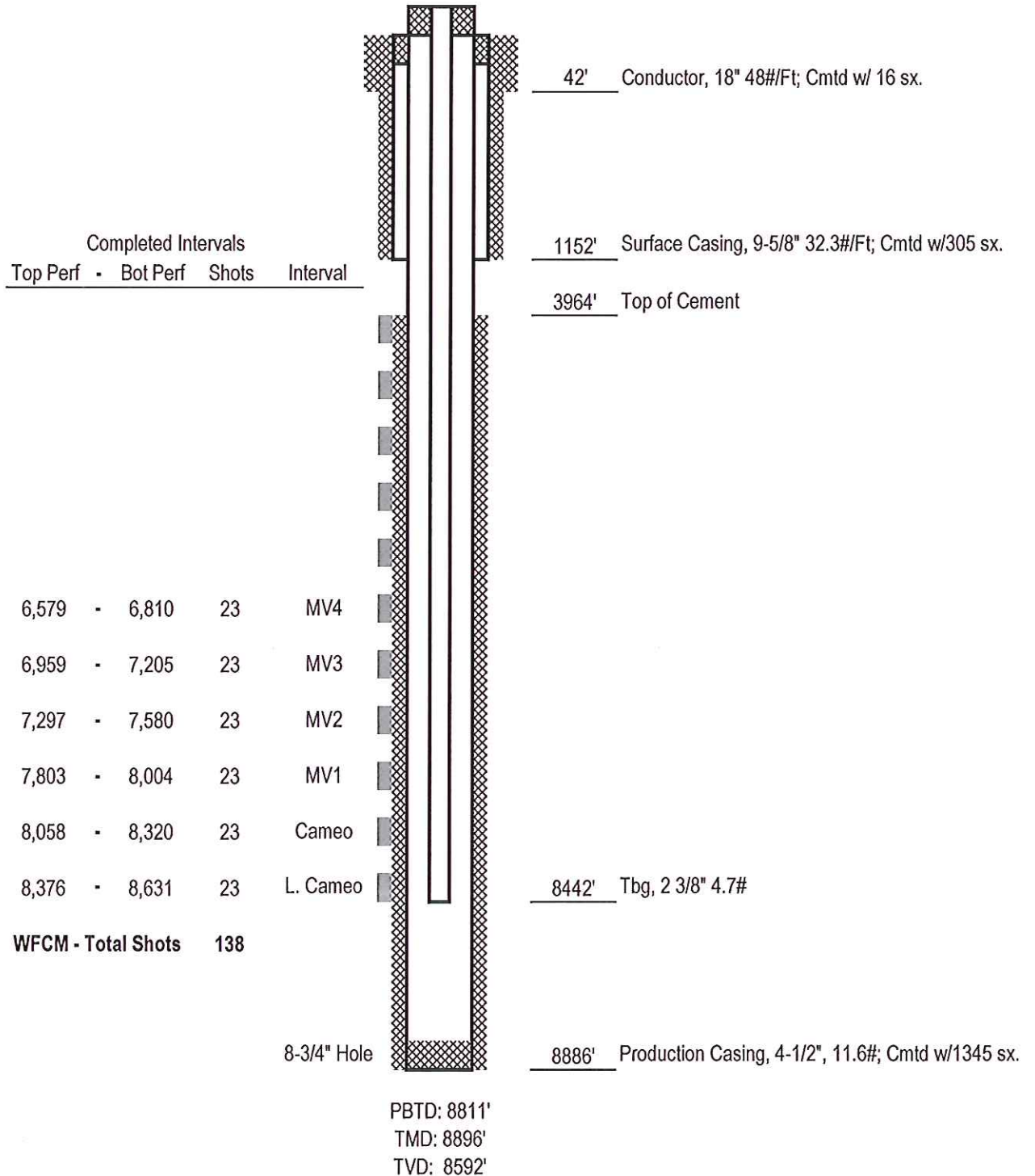
Sec. 25-T6S-R94W

Garfield County, Colorado

Parachute Prospect

FINAL
DATED 07-10-14

Formation Tops	
G Sand	2287'
Mesa Verde	5014'
Cameo	7901'
Rollins	8735'



NOTE: Not to Scale