



Chevron
U.S.A., Inc.

WELL NO.: EMERALD 34
(2627)
FIELD : RANGELY, CO.

SURVEY DATA

RUN NO. 36

SURVEY TYPE : T-S-T
DATE : 6/6/2014
METERED RATE : 2440 B/D
MEASURED RATE: 1620 B/D
DESIRED RATE : N/A
SERVICE CO.: PLS

SURFACE TEMP : 105.9 F
BHT : N/A
TBG PRESSURE : 1450 PSI
CSG PRESSURE : 0 PSI
PICK-UP : 5751'
INJ. FLUID : H2O

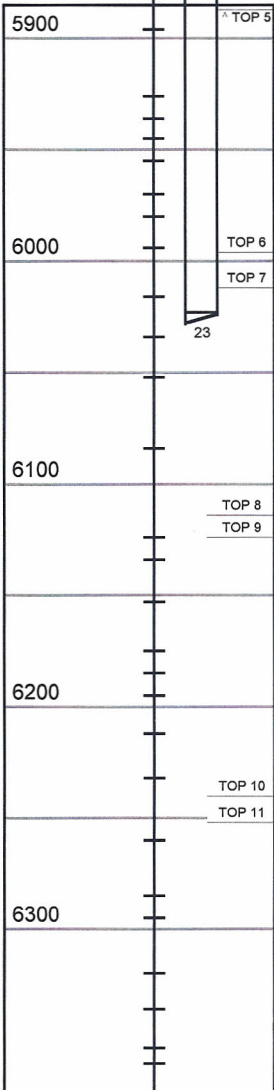
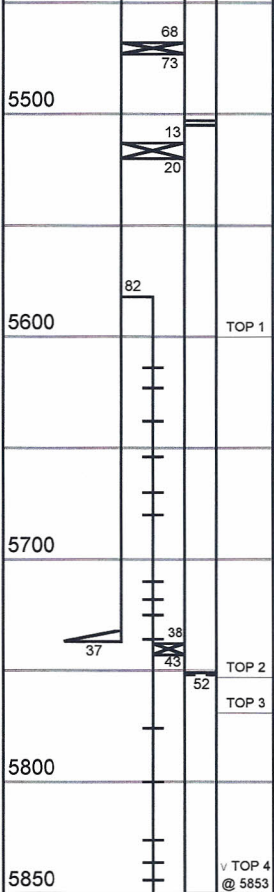
REMARKS

R/A TRACER INDICATES TOP PERF AND PACKERS OK.
RECORDED BY: R. ANDREWS

INJECTION PROFILE

MECHANICAL INFORMATION

7" 23# CASING 0-5742'
5" 18# LINER 5582'-6398'
P.B.T.D. 6803'
2-7/8" F.L. TUBING 0-5468'
TOP PACKER 5468'-5473'
2-7/8" TUBING JOINT 5473'-5503'
ON/OFF TOOL 1.875" "F" 5503'-5505'
2-3/8" TUBING 5505'-5738'
BOTTOM PACKER 5738'-5743'
2-3/8" TUBING 5743'-5751'
1.81" "R" NIPPLE 5751'-5752'
2-3/8" F.G. TUBING 5752'-6022'
MULE SHOE 6023'
5450 N-13



COMPLIANCE

COMPLIANCE CHECK: PLACED TOOLS AT 5750' AND RELEASED LARGE R/A SLUG INTO FLOWSTREAM. WAIT 10 MINUTES.

100%
EXITS BELOW TDL @ 5750

PERCENTAGE INJECTED INTO ZONE

ZONE 1	0%
5600-5753	0% COMPLIANCE
ZONE 2	0%
5753-5769	0% COMPLIANCE
ZONE 3	72%
5769-5853	45% COMPLIANCE
ZONE 4	0%
5853-5887	0% COMPLIANCE
ZONE 5	28%
5887-5996	34% COMPLIANCE
ZONE 6	0%
5996-6012	0% COMPLIANCE
ZONE 7	0%
6012-6114	21% COMPLIANCE
ZONE 8	0%
6114-6124	0% COMPLIANCE
ZONE 9	0%
6124-6240	0% COMPLIANCE
ZONE 10	0%
6240-6252	0% COMPLIANCE
ZONE 11	0%
6252-6398	0% COMPLIANCE

Run #34: 6/23/2000
(Red Indicates a CO₂ Run)
Run #35: 6/27/2001
Run #36: 6/6/2014

TEMPERATURES (F°)

DATE	RUN #34 6/23/2000	RUN #35 6/27/2001	RUN #36 6/6/2014
SURFACE	90.2	100.2	105.9
5600-5753	---	---	---
TDL (5751)	126.5	115.1	N/A
5753-5769	---	---	---
5769-5853	---	---	---
5853-5887	---	---	---
5887-5996	---	---	---
5996-6012	---	---	---
6012-6114	---	---	---
6114-6124	---	---	---
6124-6240	---	---	---
6240-6252	---	---	---
6252-6398	---	---	---
RATE (B/D)	1200	N/A	
PRESS (PSI)	2000	1500	1450