

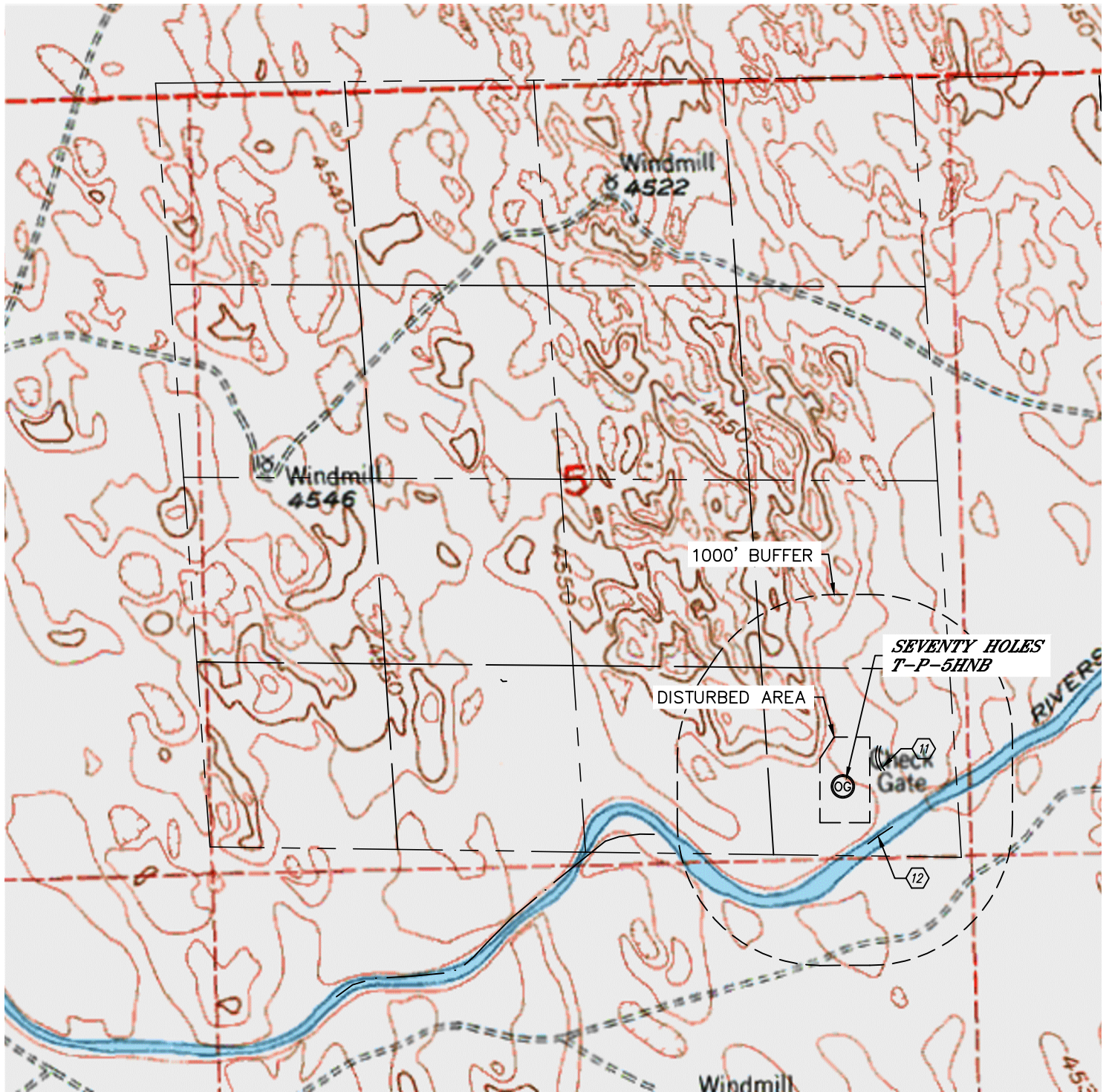


Lat40°, Inc. 1635 Foxtrail Drive, Suite 325 Loveland, CO 970-776-3321

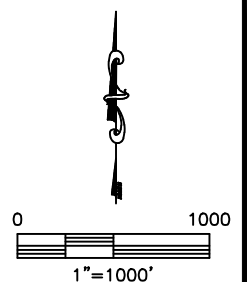
HYDROLOGY MAP

SEVENTY HOLES 44-5 PAD

SECTION: 5
TOWNSHIP: 4N
RANGE: 62W



- ⑪ DITCH 310' NE
- ⑫ RIVERSIDE INTAKE CANAL 420' SE



DATE: 6/12/2014
PROJECT#: 2012024