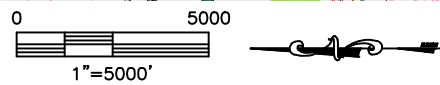
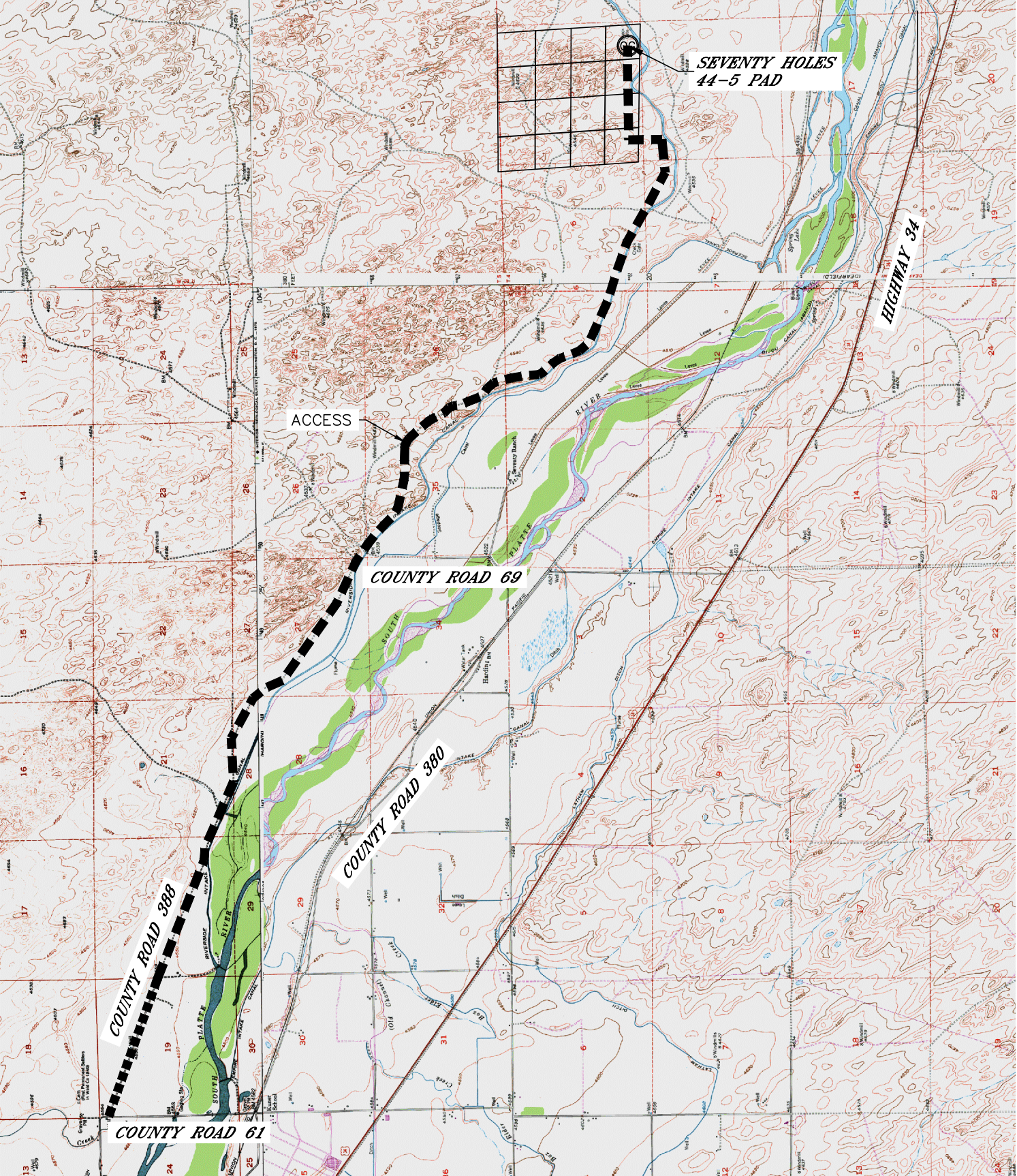




Lat40°, Inc. 1635 Foxtrail Drive, Suite 325 Loveland, CO 970-776-3321

ACCESS ROAD MAP  
SEVENTY HOLES 44-5 PAD

SECTION: 5  
TOWNSHIP: 4N  
RANGE: 62W





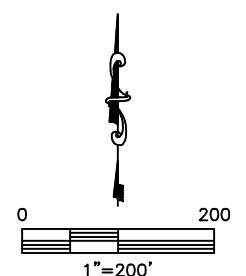
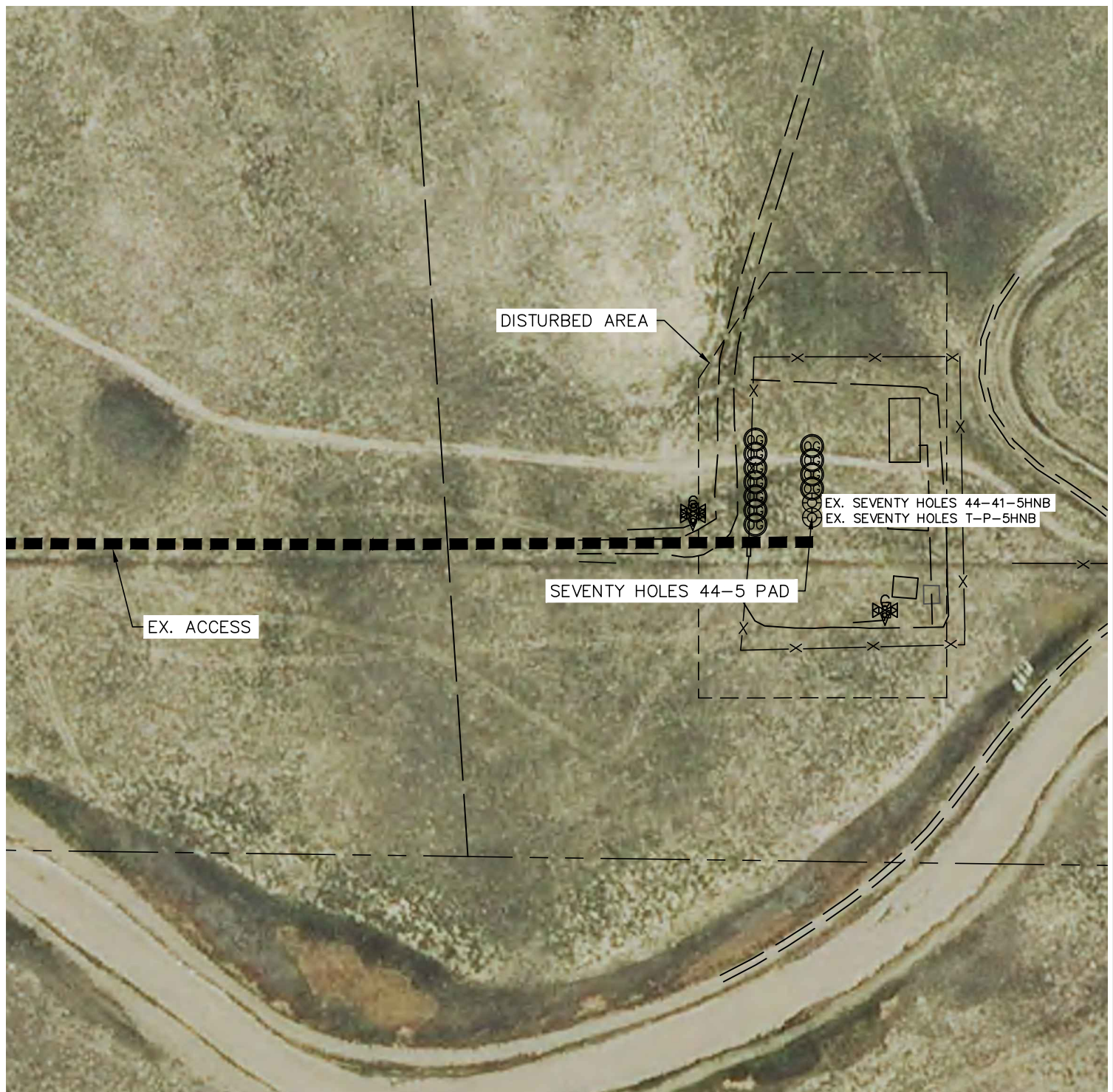


Lat40°, Inc. 1635 Foxtrail Drive, Suite 325 Loveland, CO 970-776-3321

# ACCESS ROAD MAP

SEVENTY HOLES 44-5 PAD

SECTION: 5  
TOWNSHIP: 4N  
RANGE: 62W





Lat40°, Inc. 1635 Foxtrail Drive, Suite 325 Loveland, CO 970-776-3321

# ACCESS ROAD MAP

## SEVENTY HOLES 44-5 PAD

SECTION: 5  
TOWNSHIP: 4N  
RANGE: 62W

### EXISTING WELLS:

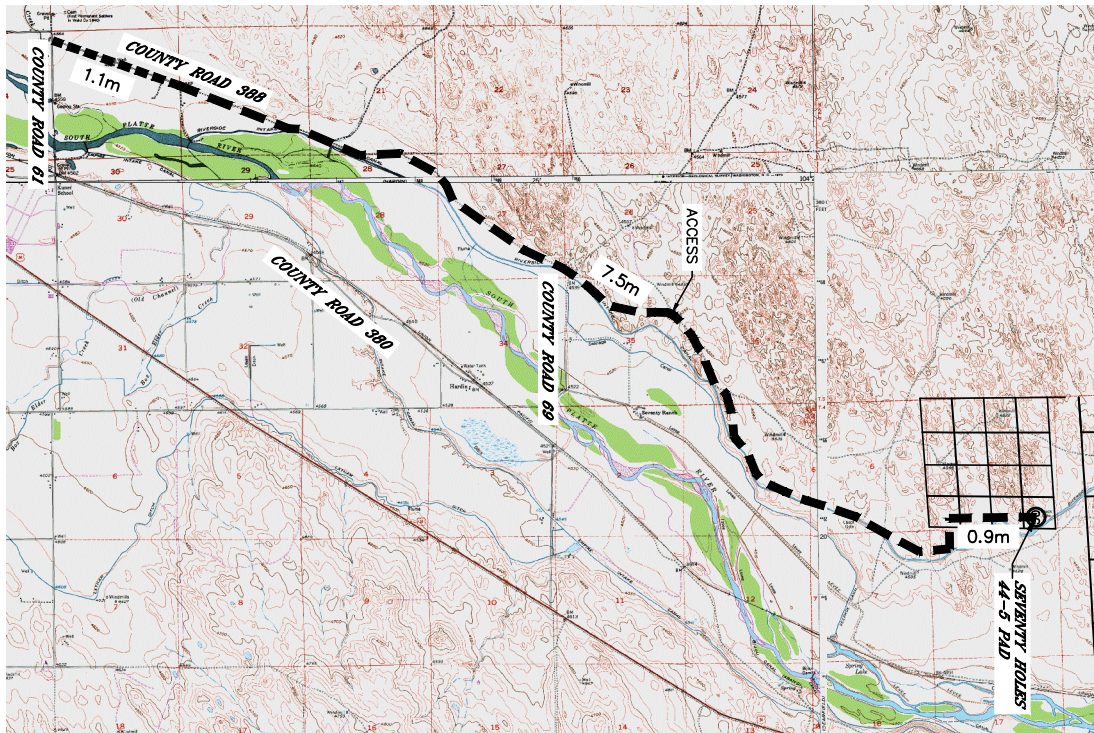
SEVENTY HOLES 44-41-5HNB  
SEVENTY HOLES T-P-5HNB

### PROPOSED WELLS:

STATE SEVENTY HOLES 41-8-17MRLNB  
STATE SEVENTY HOLES P41-8-17MRLNC  
STATE SEVENTY HOLES P-8-17MRLNB  
STATE SEVENTY HOLES P31-8-17MRLNC  
STATE SEVENTY HOLES 31-8-17MRLNB

### DRIVING DIRECTIONS TO SEVENTY HOLES 44-5 PAD

FROM THE INTERSECTION OF WELD COUNTY ROAD 61 AND WELD COUNTY ROAD 388, DRIVE SOUTHEASTERLY ON COUNTY ROAD 388 FOR 1.1 MILES TO THE MAIN ENTRANCE OF 70 RANCH (YELLOW GATE), DRIVE ALONG THE 70 RANCH MAIN ACCESS ROAD SOUTHEASTERLY FOR 7.5 MILES, DRIVE NORTH AND EAST ALONG FIELD ACCESS ROADS 0.9 MILES TO THE SEVENTY HOLES 44-5 PAD SITE.



NOT TO SCALE