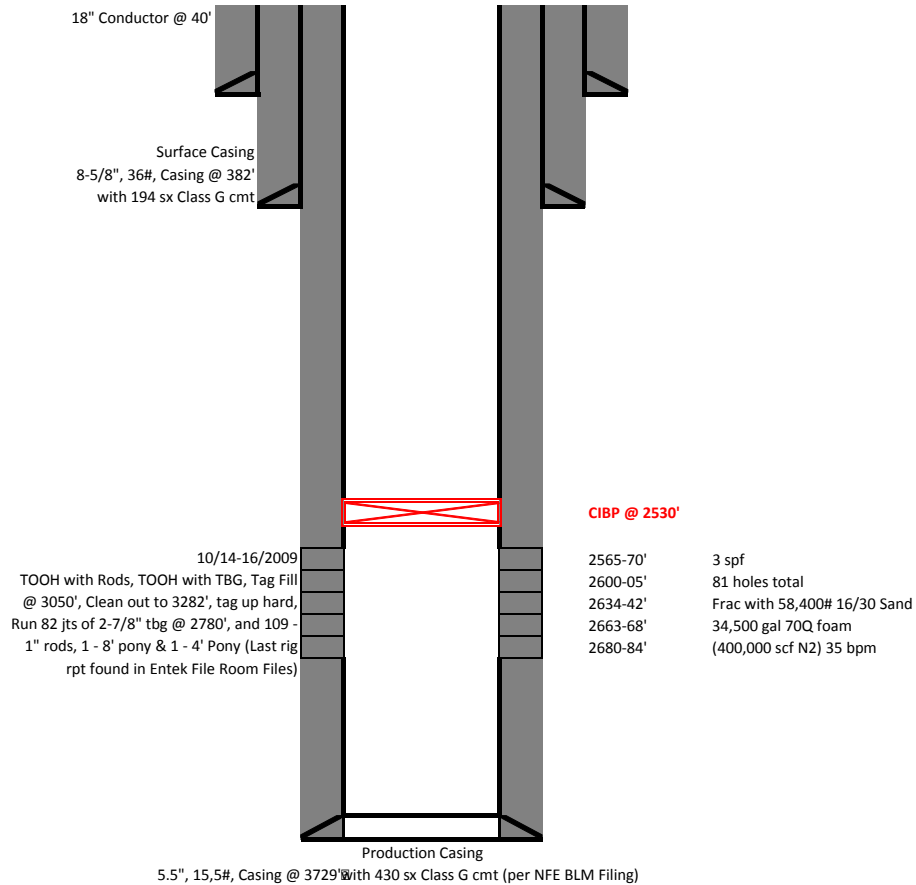


FOR 2013 MIT & Current for begining P&A procedure

Entek GRB LLC
Battle Mountain Federal 14-13
Moffat County, Colorado
Surface: Battle Mountain

Current Completed Wellbore



Proposed for P&A

Entek GRB LLC
Battle Mountain Federal 14-13
Moffat County, Colorado
Surface: Battle Mountain

Current Completed Wellbore

