



FILE NO: CH086868	COMPANY WPX ENERGY INC
API NO: 05045222700000	WELL C & C ENERGY GM 322-13
	FIELD GRAND VALLEY
	COUNTY GARFIELD
	STATE CO
Ver. 3.87 13 7S 96W GM 24-12 PAD H & P 318	LOCATION: SHL: 269' FSL & 1022' FWL (12 7S 96W) BHL: 1746' FNL & 2192' FWL (13 7S 96W) SEC 13 TWP 7S RGE 96W
PERMANENT DATUM LOG MEASURED FROM DRILL. MEAS. FROM	OTHER SERVICES BOND LOG ELEVATIONS: KB 5165 FT DF GL 5141 FT

DATE	09-Jun-2014
RUN	1
TRIP	1
SERVICE ORDER	US086868
DEPTH DRILLER	6685 FT
DEPTH LOGGER	6641 FT
BOTTOM LOGGED INTERVAL	6631 FT
TOP LOGGED INTERVAL	3356 FT
TIME STARTED	10:30
TIME FINISHED	15:30
OPERATOR RIG TIME	5 HOURS
TYPE OF FLUID IN HOLE	WATER
FLUID DENSITY	NA
FLUID SALINITY	NA
FLUID LEVEL	68 FT
LOGGED CEMENT TOP	NA
WELLHEAD PRESSURE	0 PSI
MAXIMUM HOLE DEVIATION	NA
NOMINAL LOGGING SPEED	10 FMN
MAX. RECORDED TEMP.	203 DEGF
REFERENCE LOG	BAKER HUGHES BOND LOG
REFERENCE LOG DATE	09-Jun-2014
EQUIP. NO.	6670
LOCATION	NEWELL
RECORDED BY	GRAND JCT.
WITNESSED BY	JEFF BRADY

IN MAKING INTERPRETATIONS OF LOGS OUR EMPLOYEES WILL GIVE THE CUSTOMER THE BENEFIT OF THEIR BEST JUDGEMENT. BUT SINCE ALL INTERPRETATIONS ARE OPINIONS BASED ON INFERENCES FROM ELECTRICAL OR OTHER MEASUREMENTS, WE CANNOT, AND WE DO NOT GUARANTEE THE ACCURACY OR CORRECTNESS OF ANY INTERPRETATION. WE SHALL NOT BE LIABLE OR RESPONSIBLE FOR ANY LOSS, COST, DAMAGES, OR EXPENSES WHATSOEVER INCURRED OR SUSTAINED BY THE CUSTOMER RESULTING FROM ANY INTERPRETATION MADE BY ANY OF OUR EMPLOYEES.

BOREHOLE RECORD

BIT SIZE	FROM	TO
13.5 IN	0 FT	1528 FT
8.75 IN	1528 FT	6691 FT

CASING RECORD

SIZE	WEIGHT	GRADE	FROM	TO
9.625 IN			0 FT	1528 FT
4.5 IN	11.6 LB/F	I-80	0 FT	6691 FT

REMARKS

RUN 1 TRIP 1: All data on this log is shifted and epth matched using the gamma ray curve to the Baker Hughes bond log dated 09/June/2014 at the client's request.

The depth matching process creates potential for collar lengths to vary from those recorded on other cased hole wireline units without a gamma ray reference.

The amount of linear shift is 8 feet.

Logged in PNC 3-D mode.

BHT = 203 degF

SJ = 3446' - 3469'

CREW: NEWELL, FAVORITE AND PACK

THANKS FOR CHOOSING BAKER HUGHES ... THE BEST CHOICE!

EQUIPMENT DATA

RUN	TRIP	TOOL	SERIES NO.	SERIAL NO.	POSITION
1	1	PCM	8250EA	10314363	FREE
1	1	TEL/CCL	8248ED	Z120493	FREE
1	1	GR	2812LA	11701636	FREE
1	1	RPM	8281EA	10294755	FREE
1	1	RPM	8283PA	10466231	FREE
1	1	RPM	8281FA	10238007	FREE

MAIN SECTION PNC 3-D MODE

ECLIPS 6.2i ECLIPS General Release Rel 6.2i Wed Jun 12 12:21:40 CDT 2013

Updates: 1

Plotted: Mon Jun 9 20:34:15 2014

PARAMETER AND FILTER SUMMARY REPORT

FILE: /dat1a/086868/n354h02.prm
 LOGGING MODE: DEPTH DIRECTION: UP
 TOP DEPTH: 3330.000 ft BOTTOM DEPTH: 6643.750 ft

SYMMETRIC FILTER

MEASUREMENT TYPE	PARAMETER	VALUE	UNITS	INTERVAL (ft)
GR	FILTER ()	medium (1)		TOP BOTTOM

RPM PROCESSING

MEASUREMENT TYPE	PARAMETER	VALUE	UNITS	INTERVAL (ft)
PNC Parameters	BOREHOLE CONTENTS	FLUID		TOP BOTTOM
	OPEN/CASED HOLE	CASED HOLE		" "
	BOREHOLE SIZE	8.75	in	" "
	CASING SIZE	4.50	in	" "
	MATRIX	SANDSTONE		" "
	CORRECTION BUFFER	11		" "

CURVE DESCRIPTION REPORT

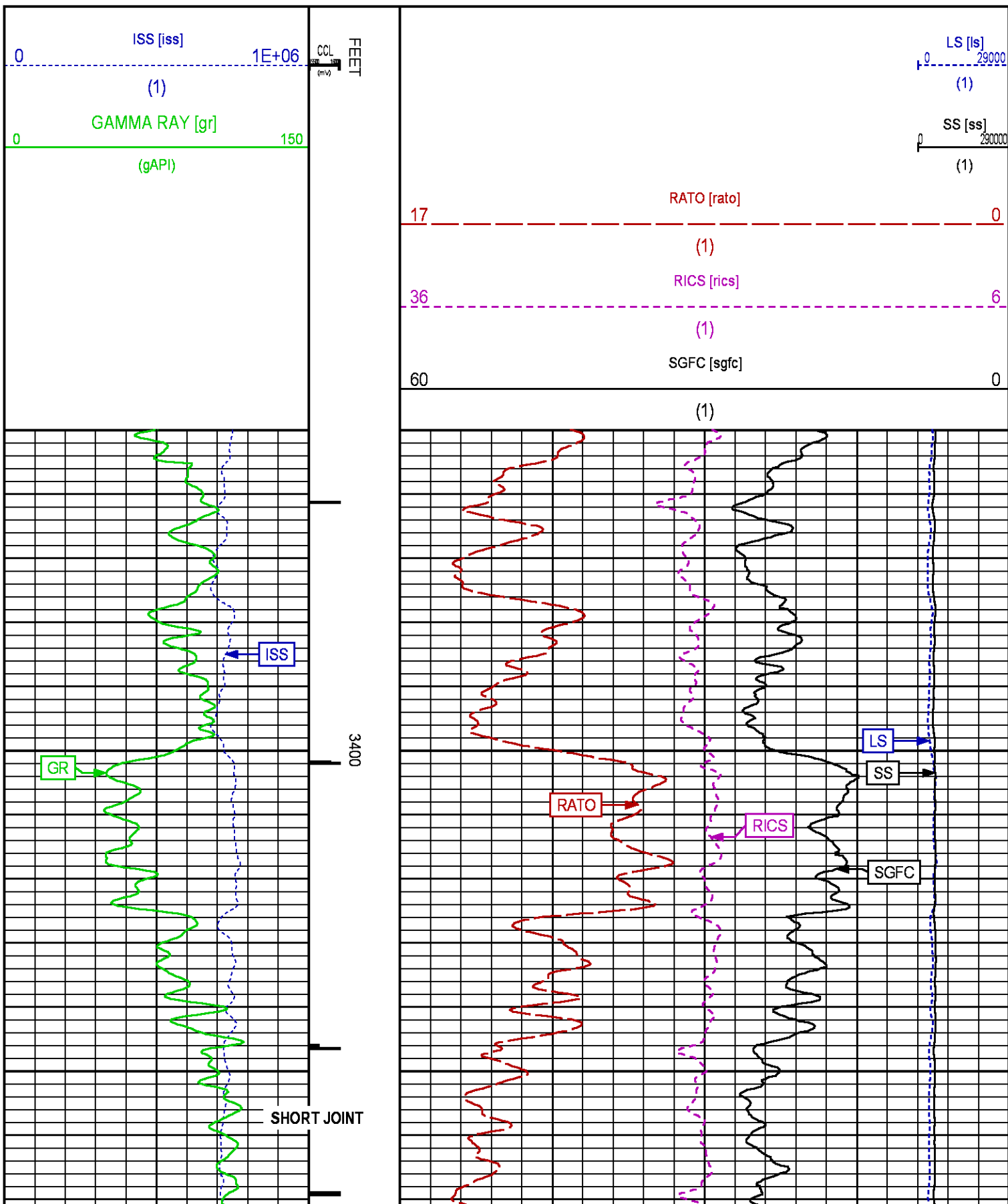
CURVE NAME	CREATION DATE	CURVE DESCRIPTION
F1:CCL	Jun 9 11:43:25 2014	CASING COLLAR LOCATOR
F1:GR	Jun 9 11:43:25 2014	GAMMA RAY
F1:ISS	Jun 9 11:43:25 2014	INELASTIC SHORT SPACE COUNT RATE
F1:LS	Jun 9 11:43:25 2014	LONG SPACE COUNT RATE
F1:RATO	Jun 9 11:43:25 2014	SHORT/LONG SPACE COUNT RATE RATIO
F1:RICS	Jun 9 11:43:25 2014	SHORT SPACE INELASTIC TO CAPTURE COUNT RATE RATIO (ISS/CSS)
F1:SGFC	Jun 9 11:43:25 2014	CORRECTED FORMATION SIGMA
F1:SS	Jun 9 11:43:25 2014	SHORT SPACE COUNT RATE

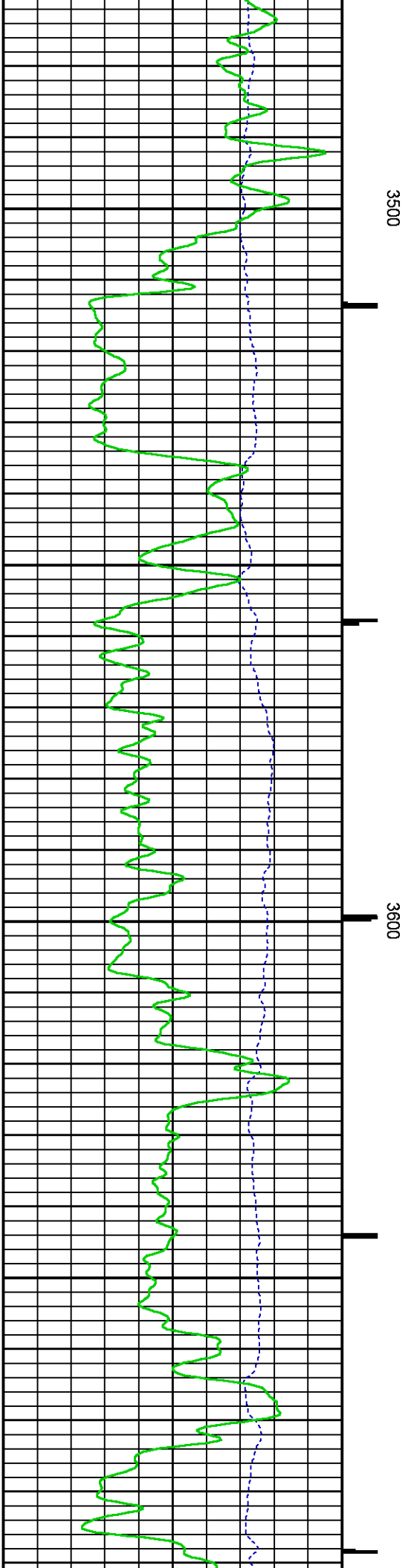
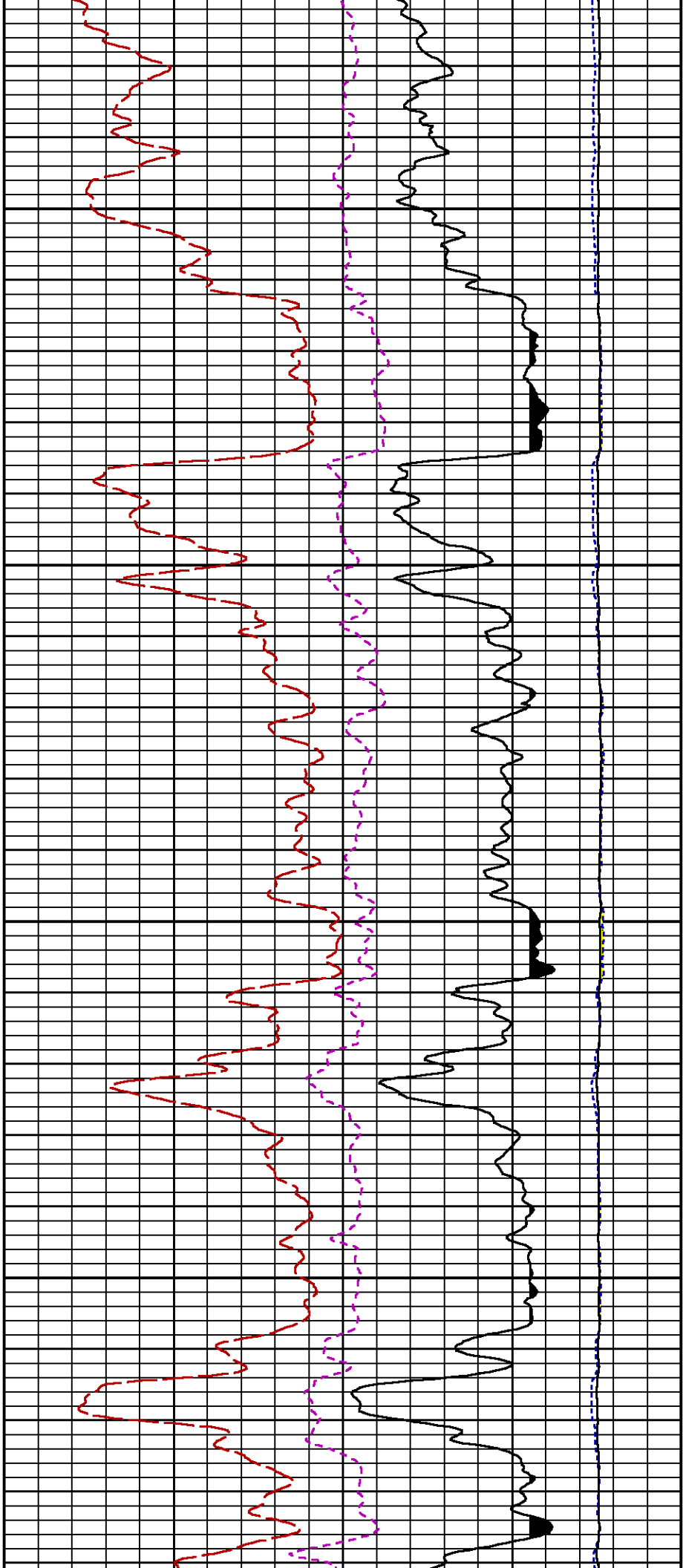
CURVE MEASURE POINT OFFSET

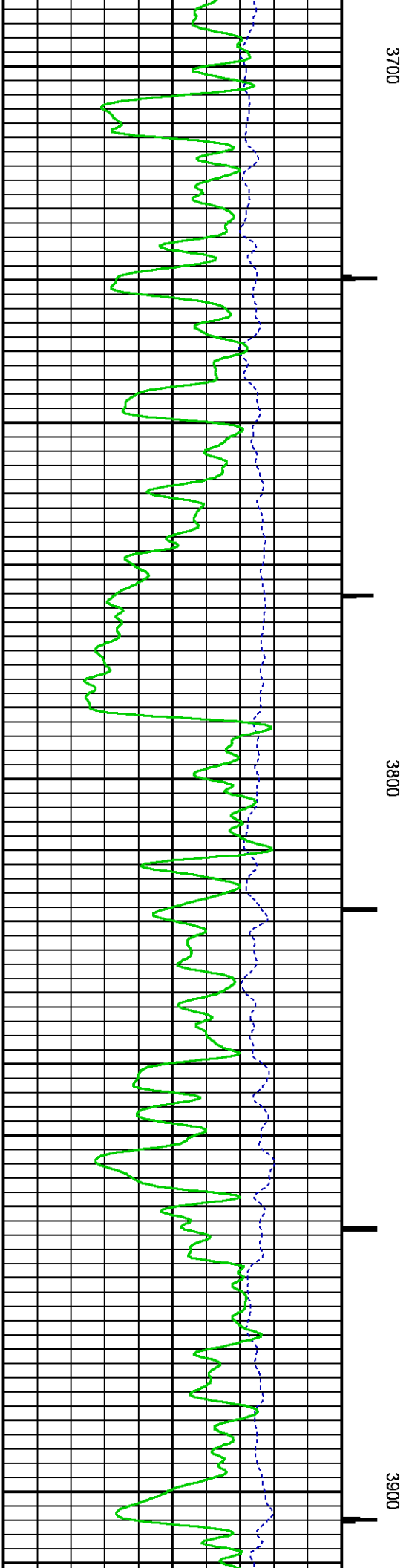
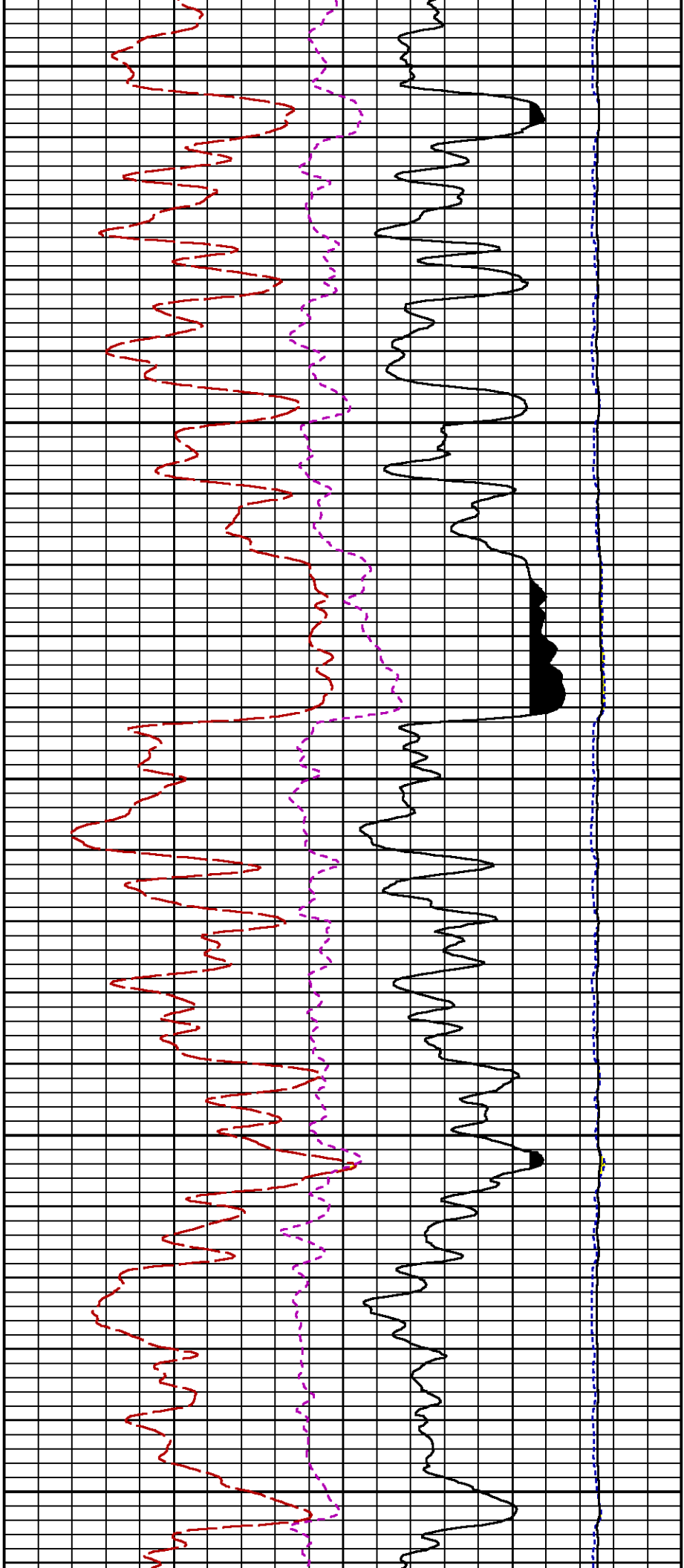
CURVE	OFFSET (ft)	CURVE	OFFSET (ft)	CURVE	OFFSET (ft)	CURVE	OFFSET (ft)
CCL	21.75	ISS	9.50	RATO	9.50	SGFC	9.50
GR	19.25	LS	9.50	RICS	9.50	SS	9.50

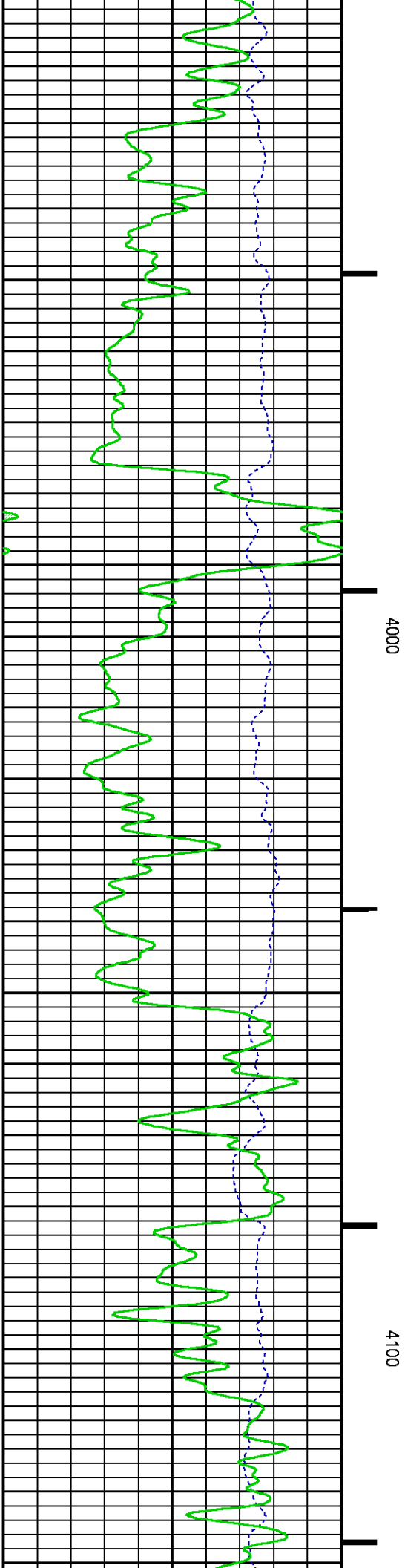
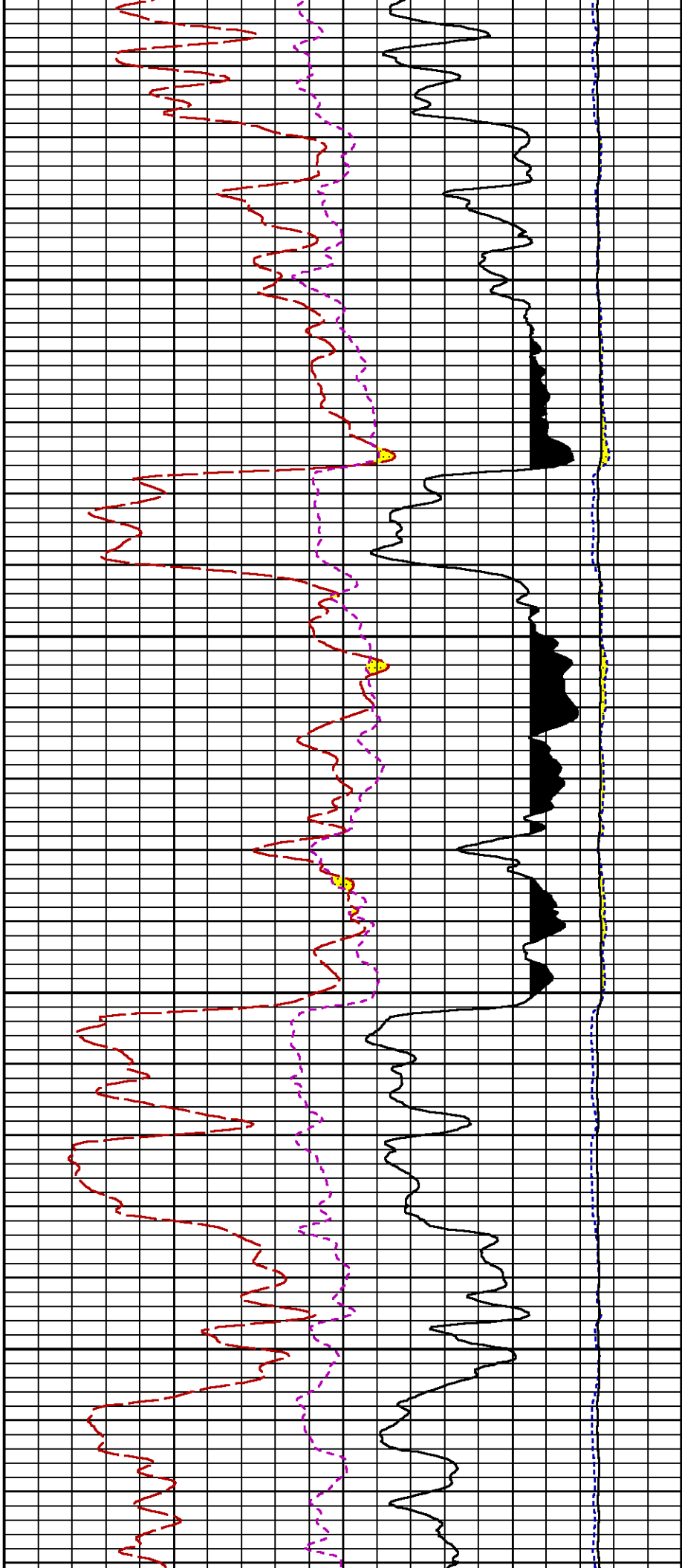
Presentation : HL6670:/dat1a/086868/RPM_MAIN.fvpdf [5"/100' Scale]
Plot Interval : 3350 - 6646 Feet

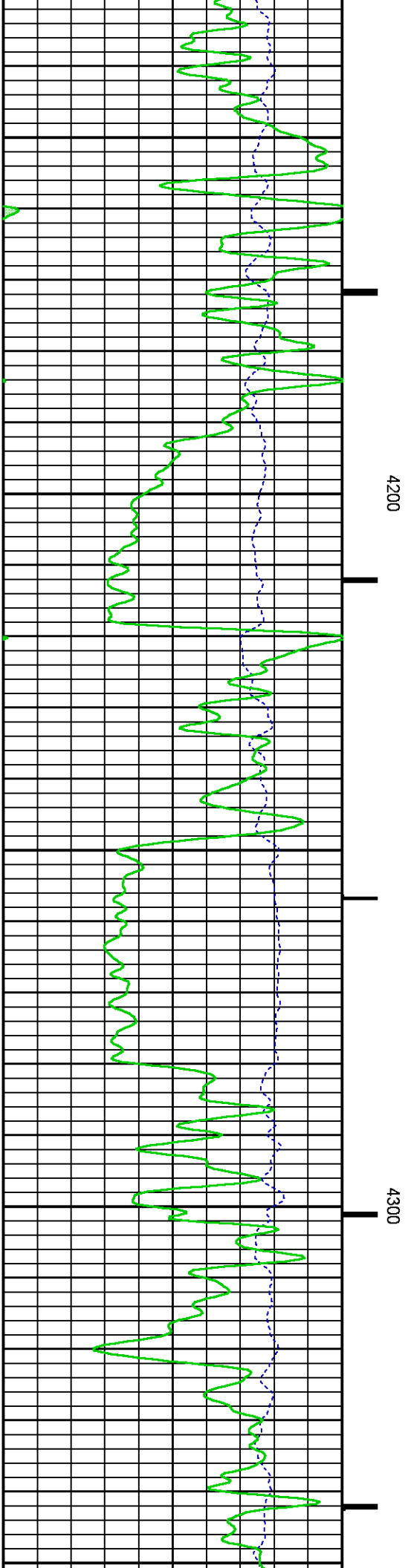
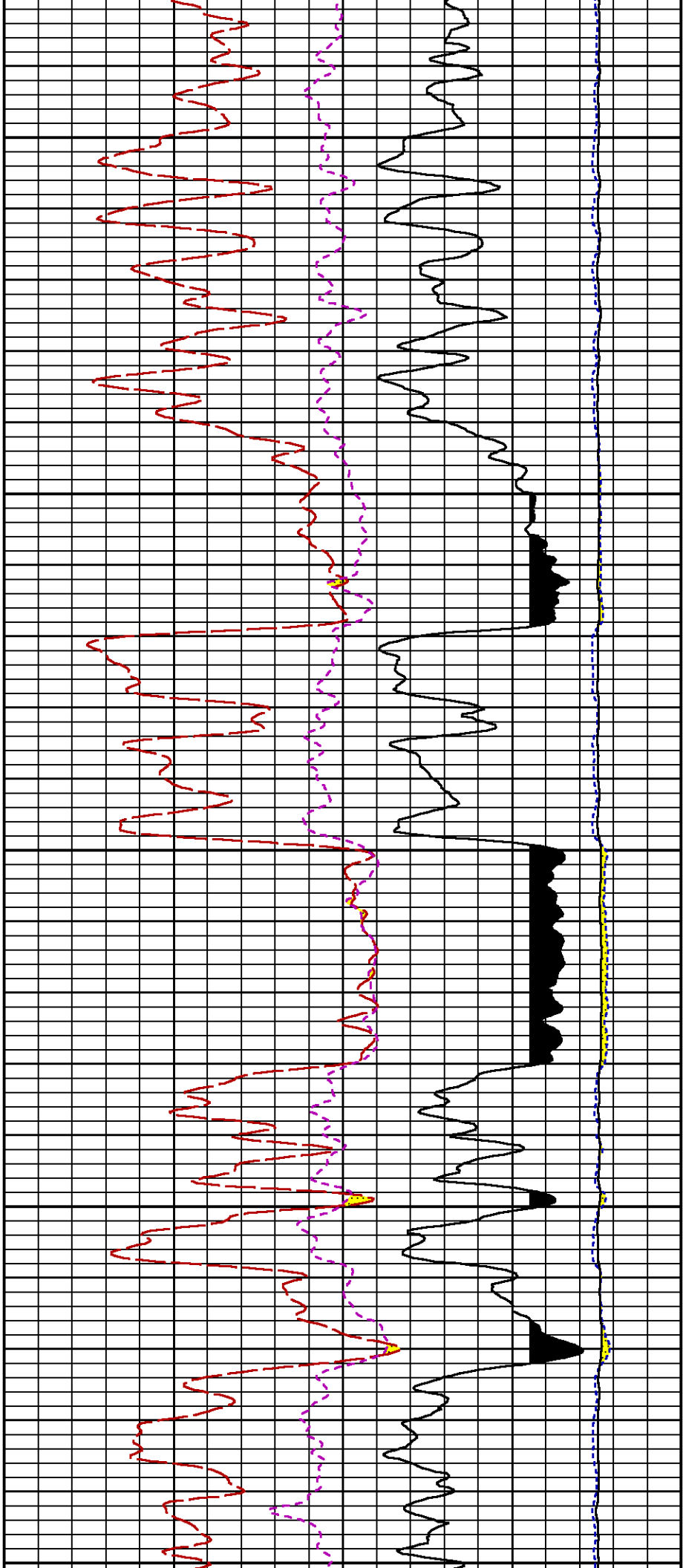
Data File 1 : F1 : HL6670:/dat1a/086868/RPM_MAIN.xtf
Created On : Jun 9 11:43:25 2014
Company : WPX ENERGY INC
Well : C & C ENERGY GM 322-13
Field : GRAND VALLEY
File Interval : 18 - 6643.75 Feet
OCT : n354h

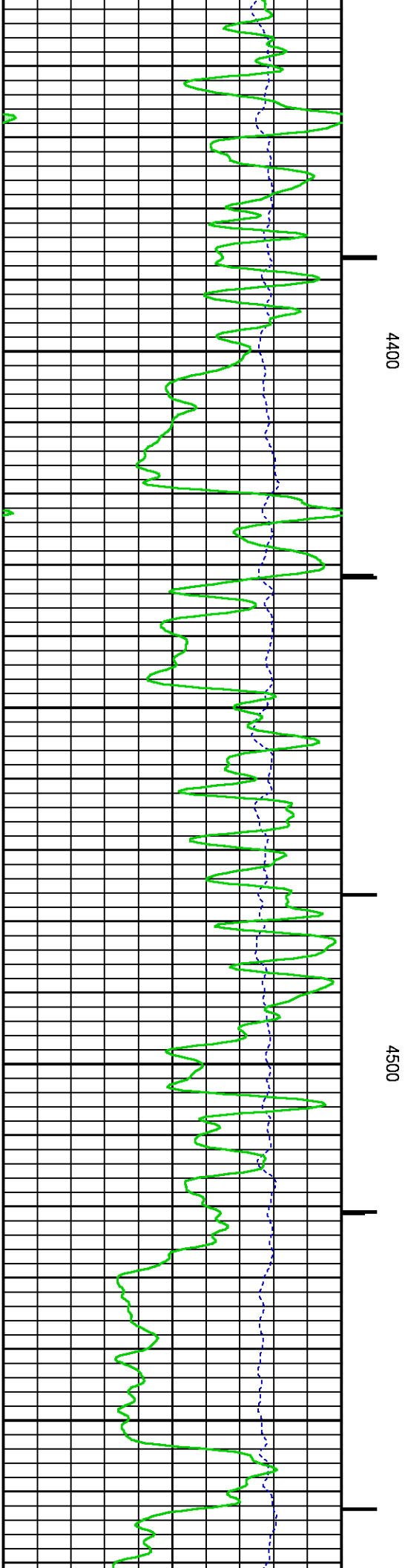
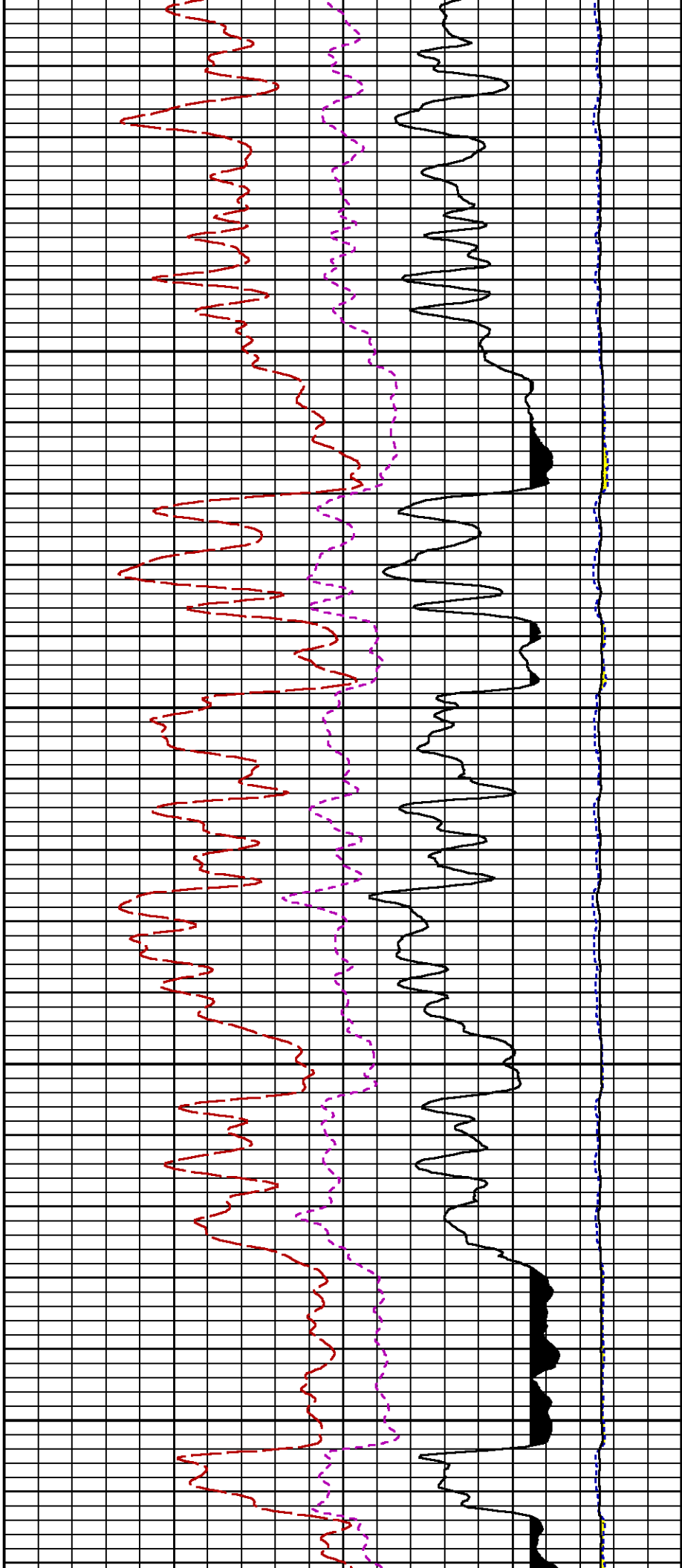


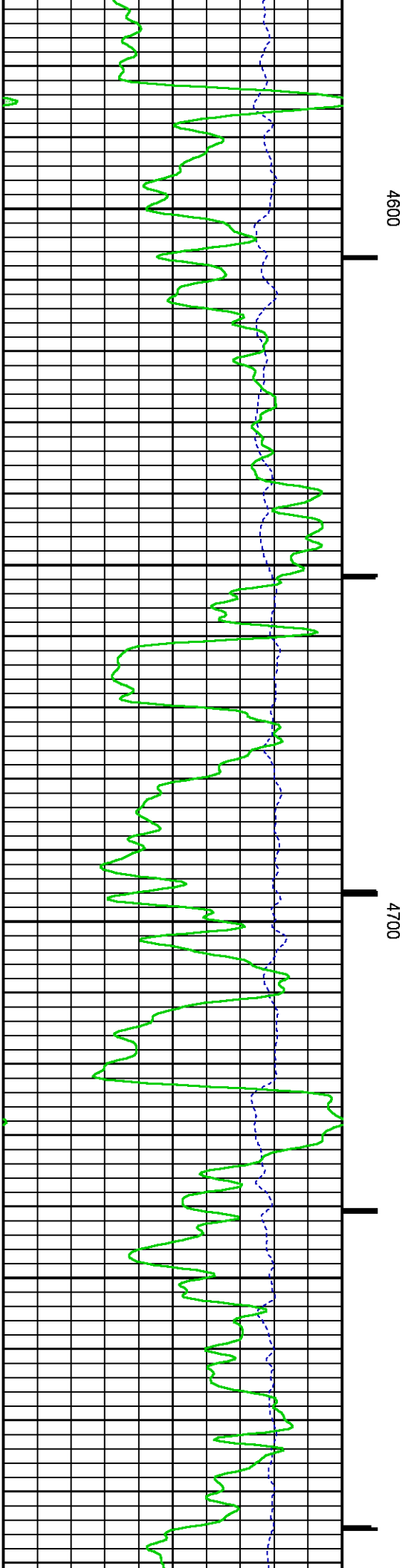
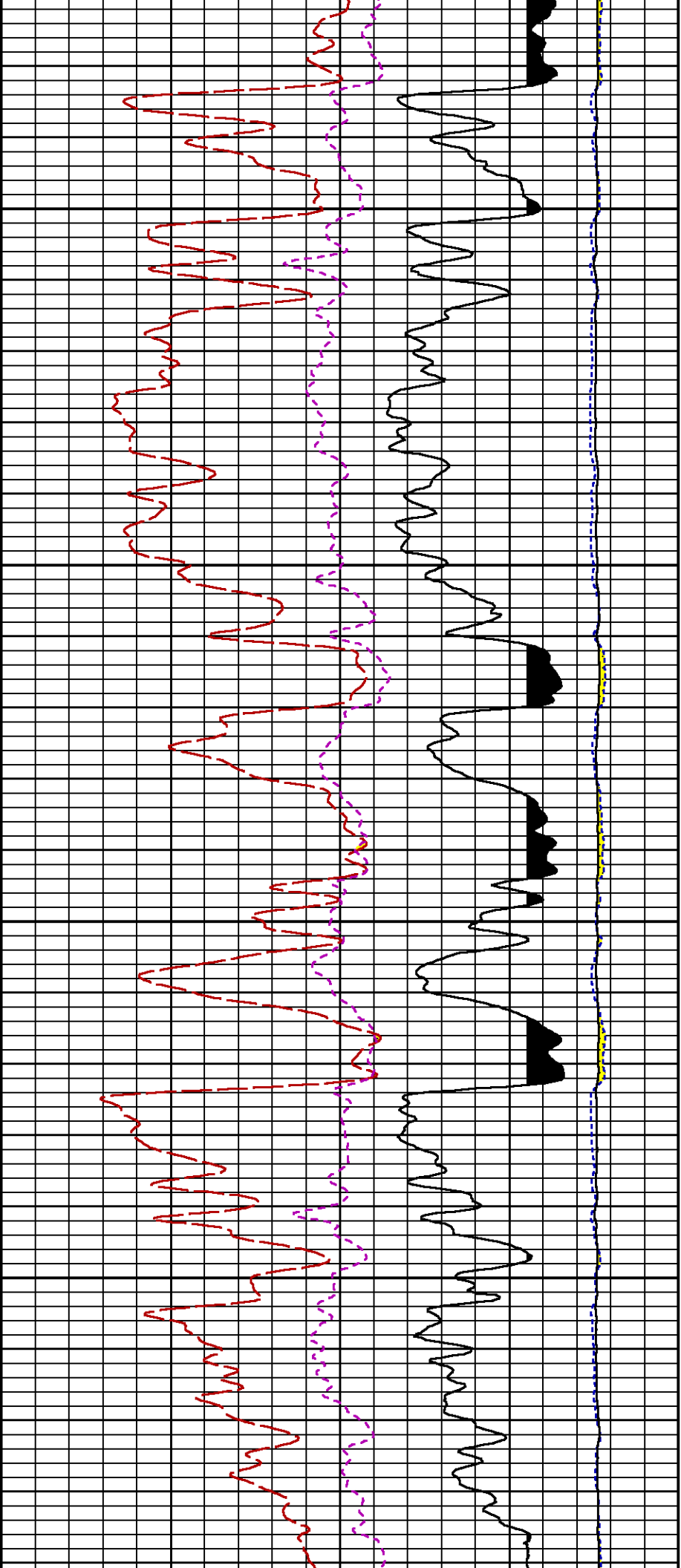


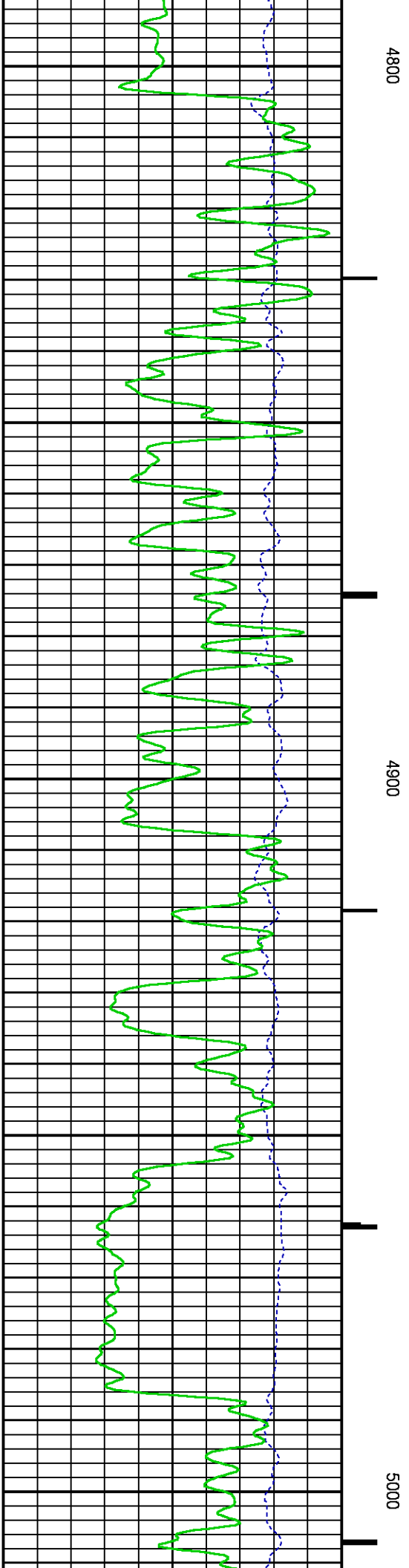
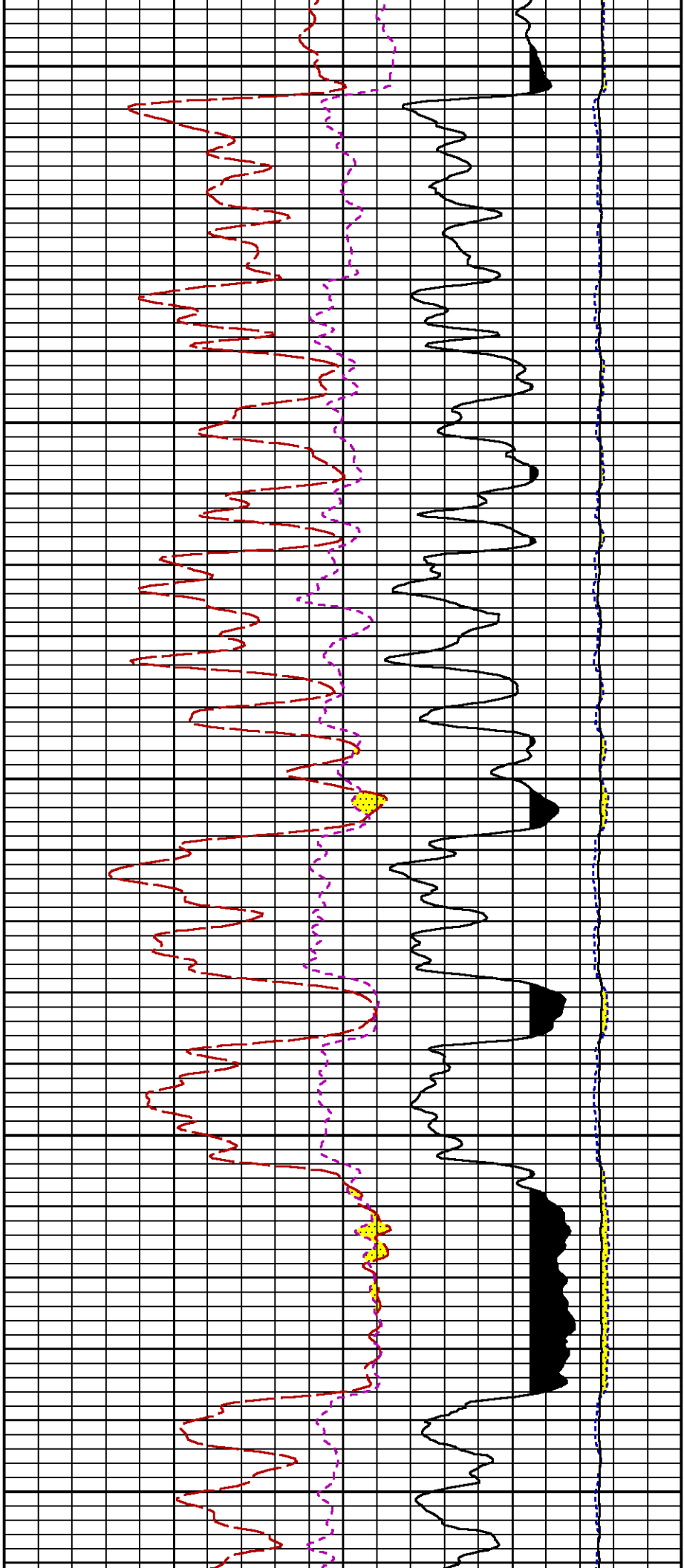


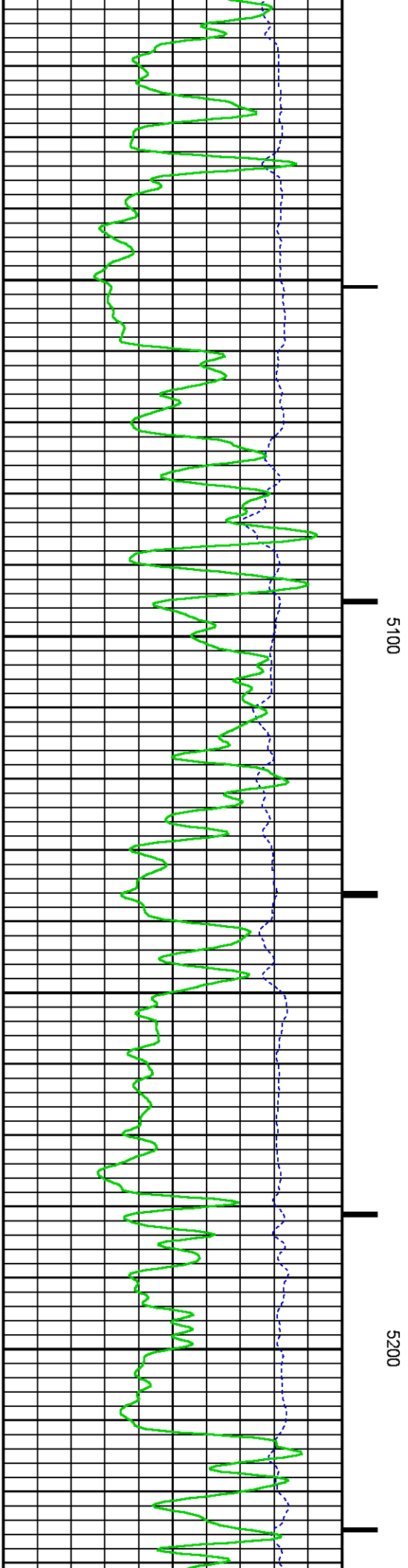
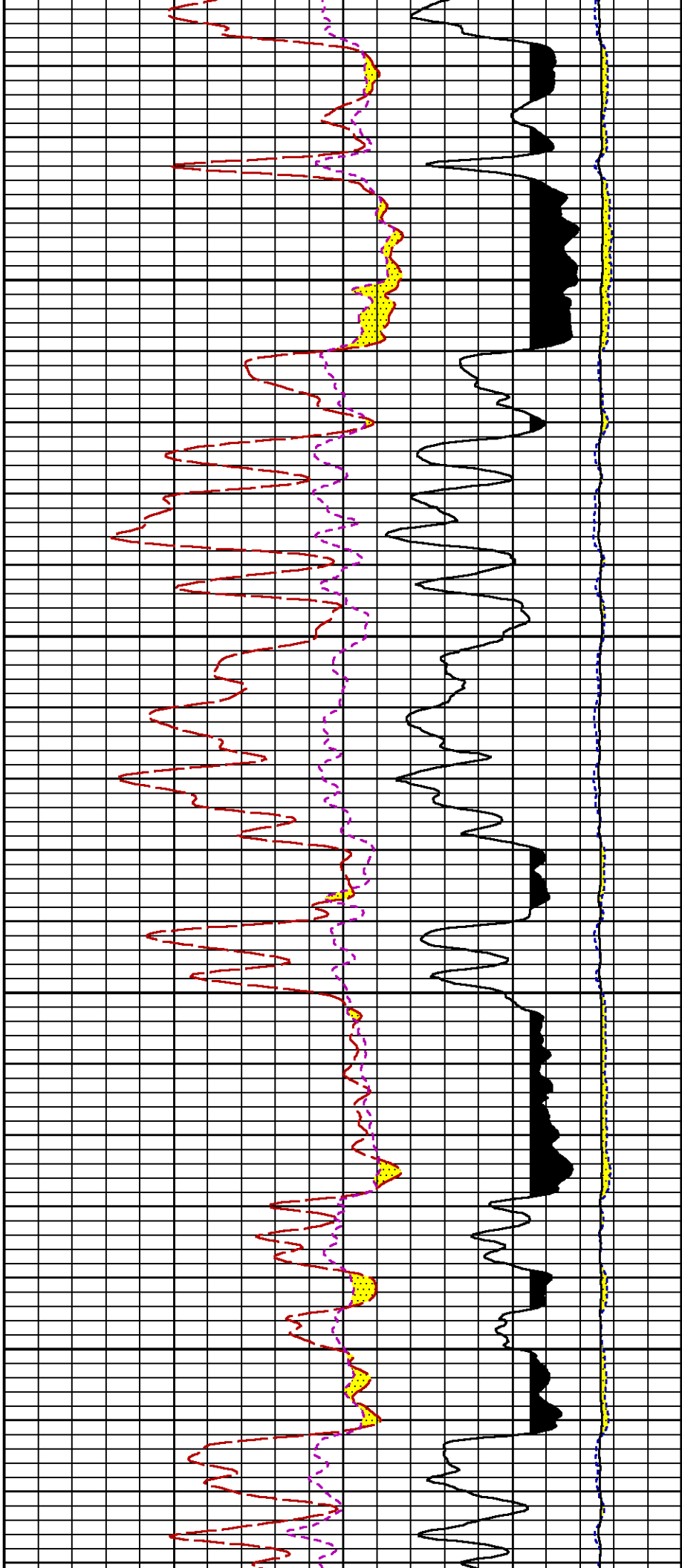


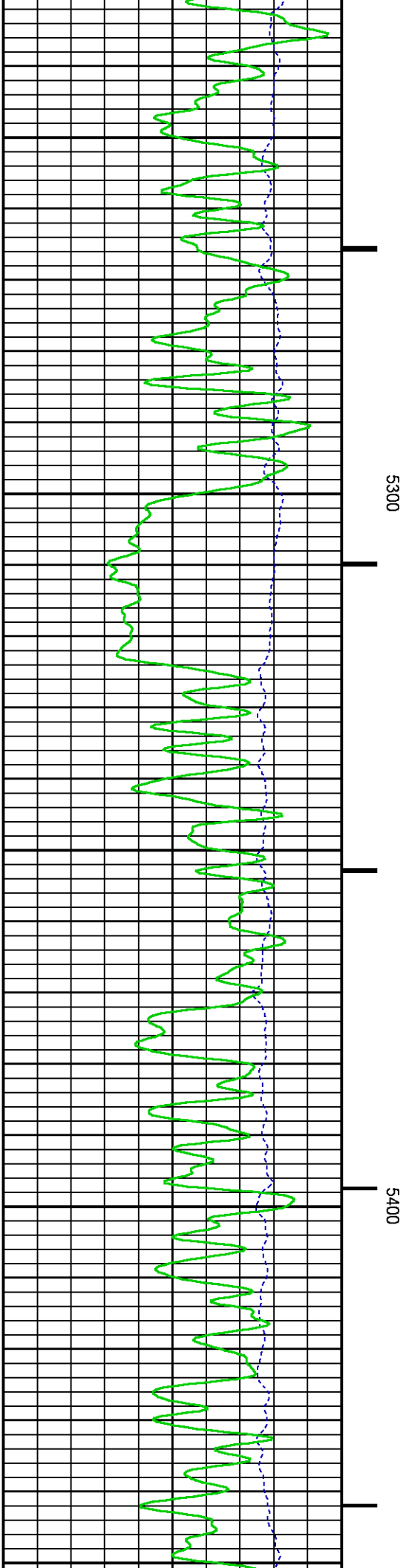
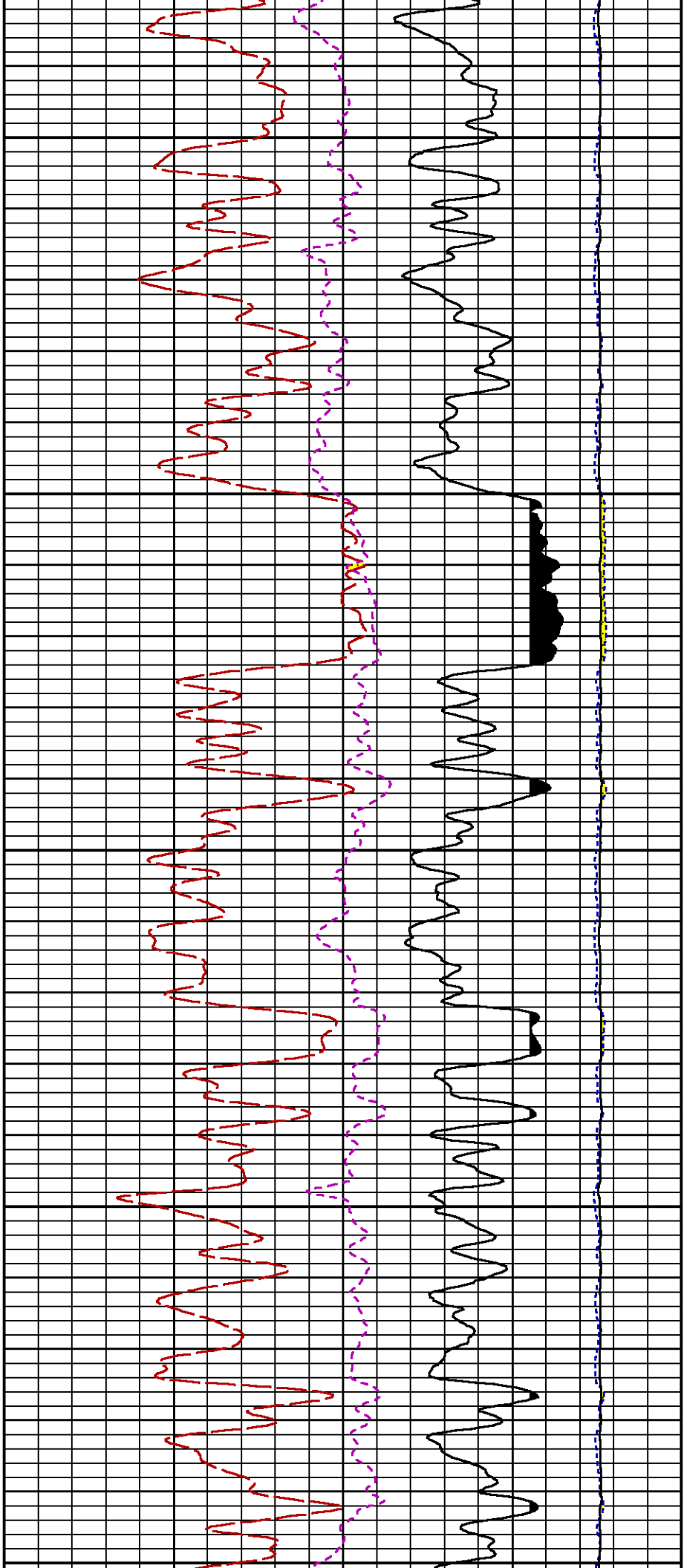


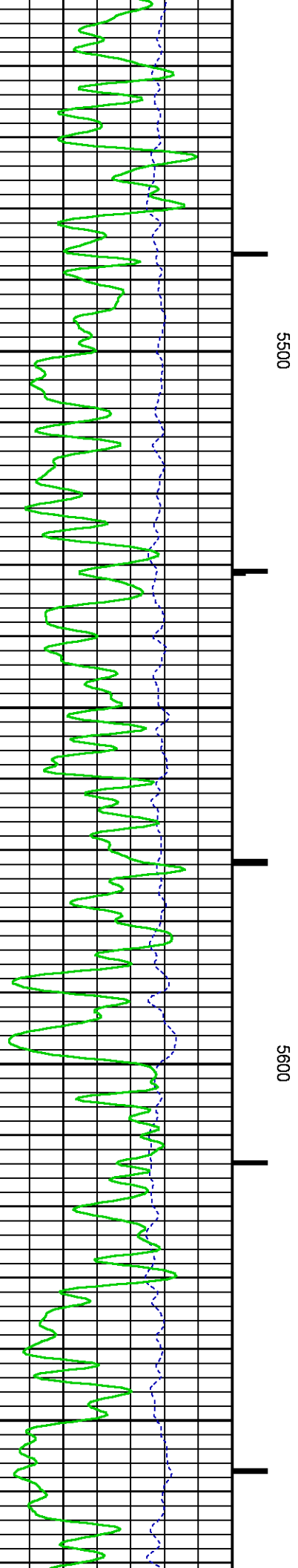






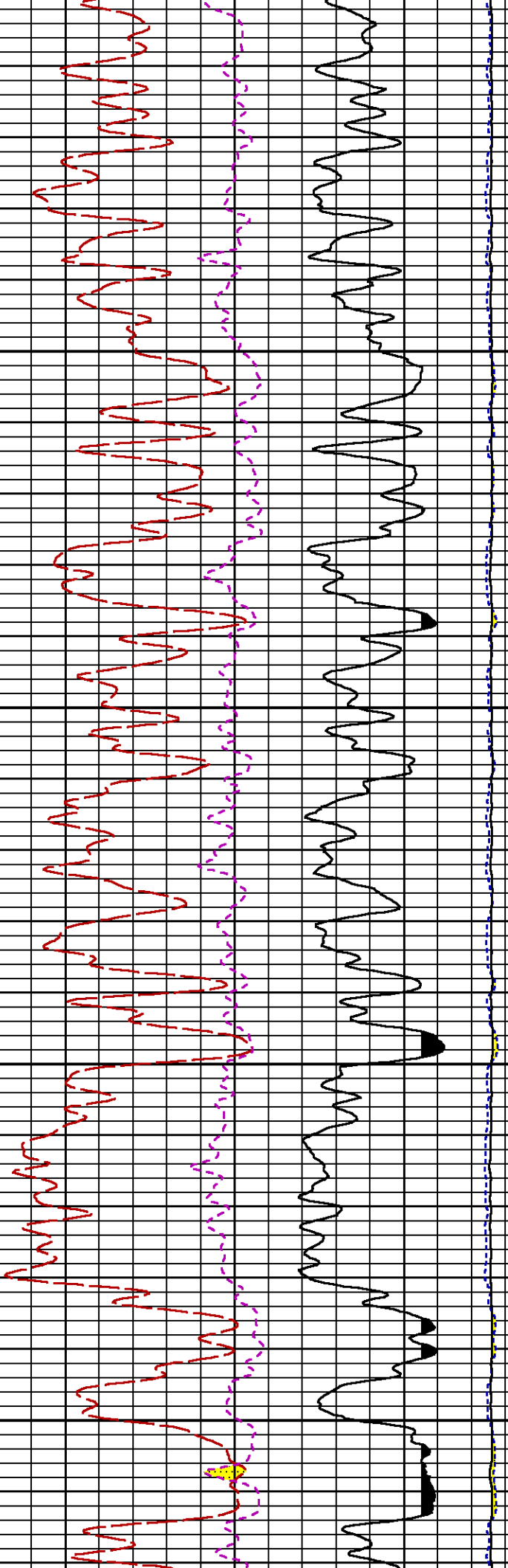


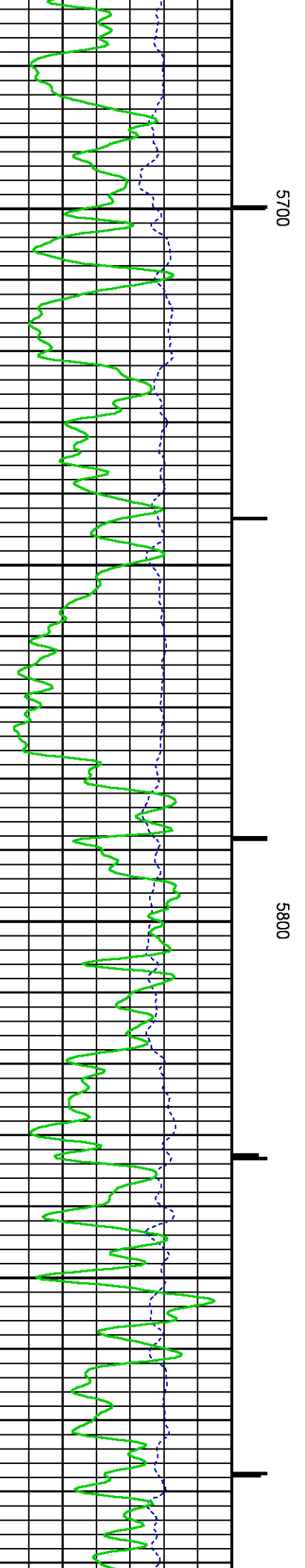
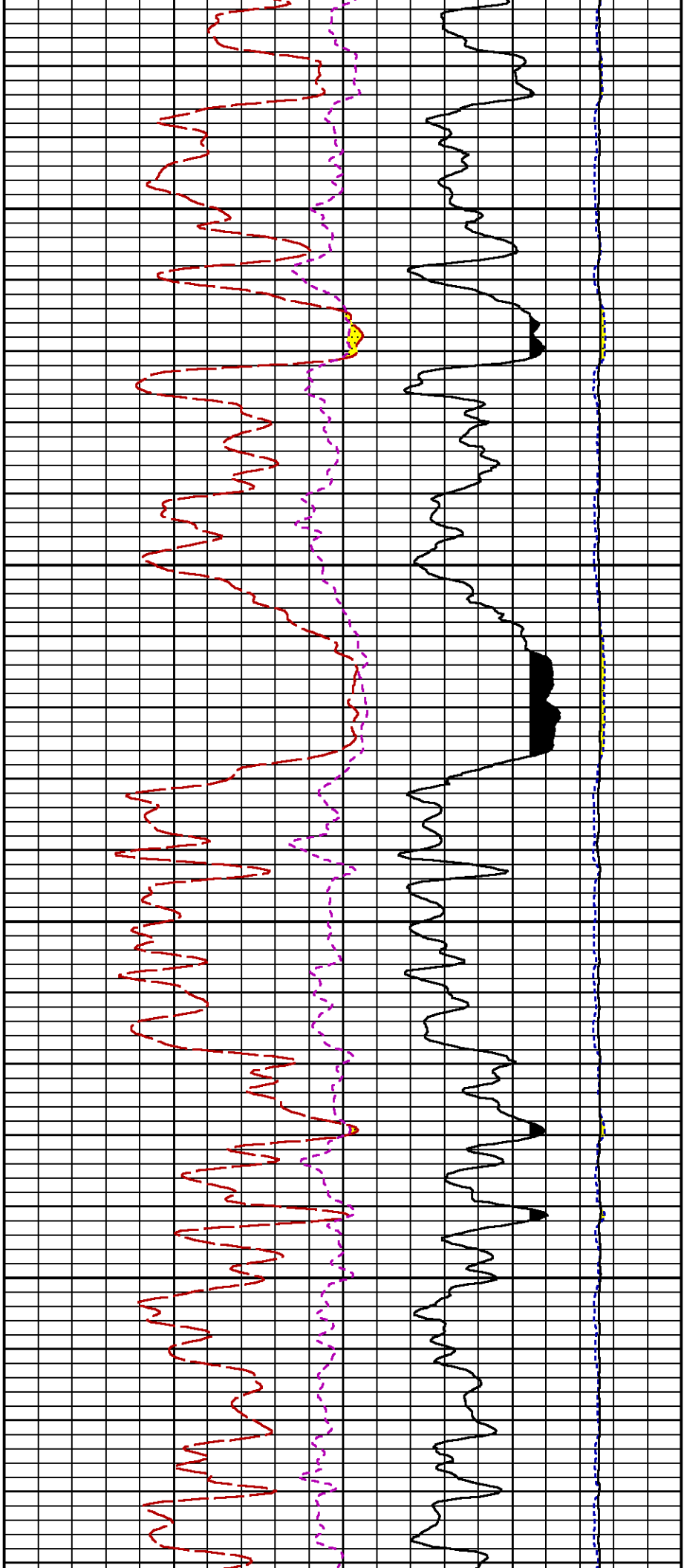


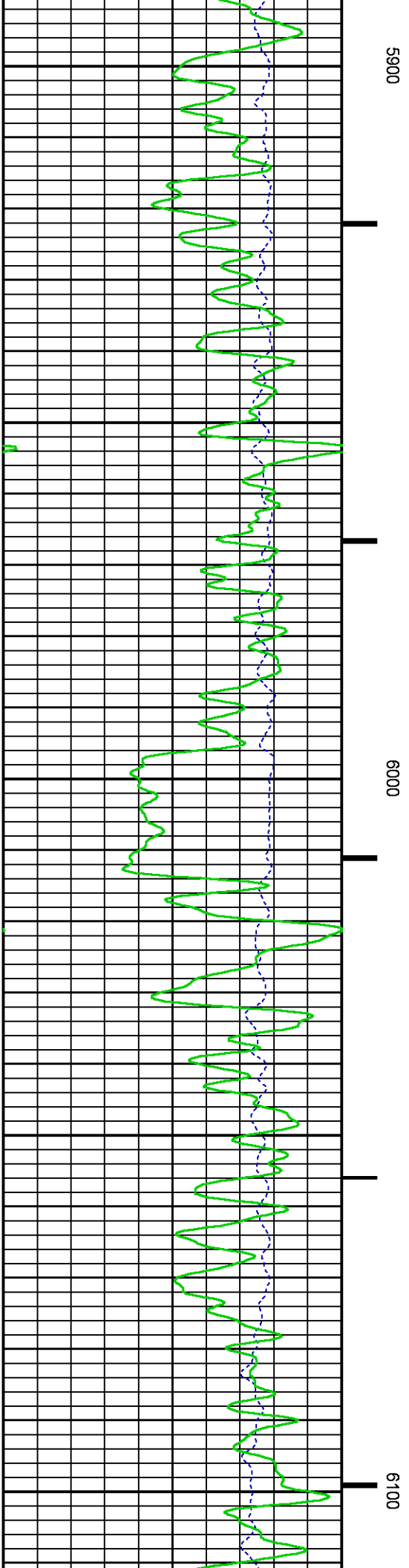
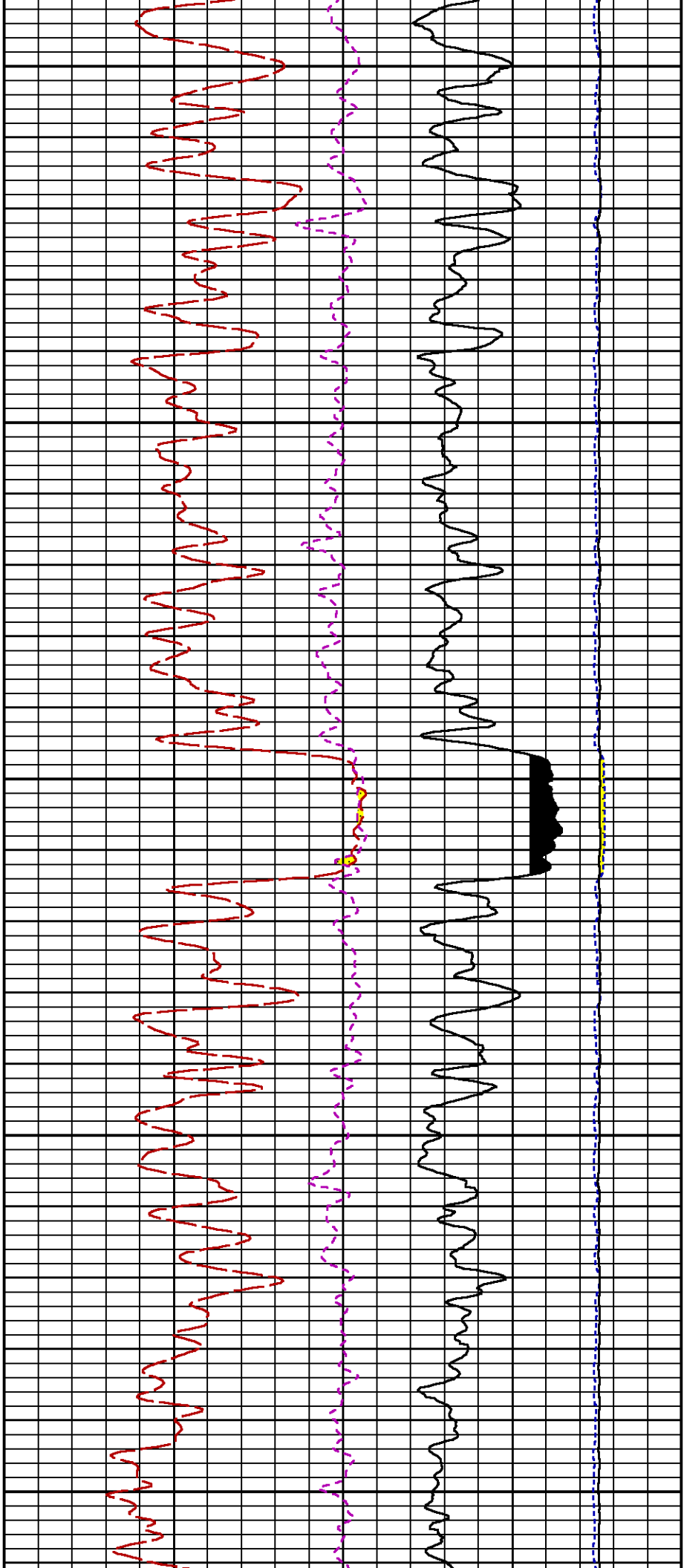


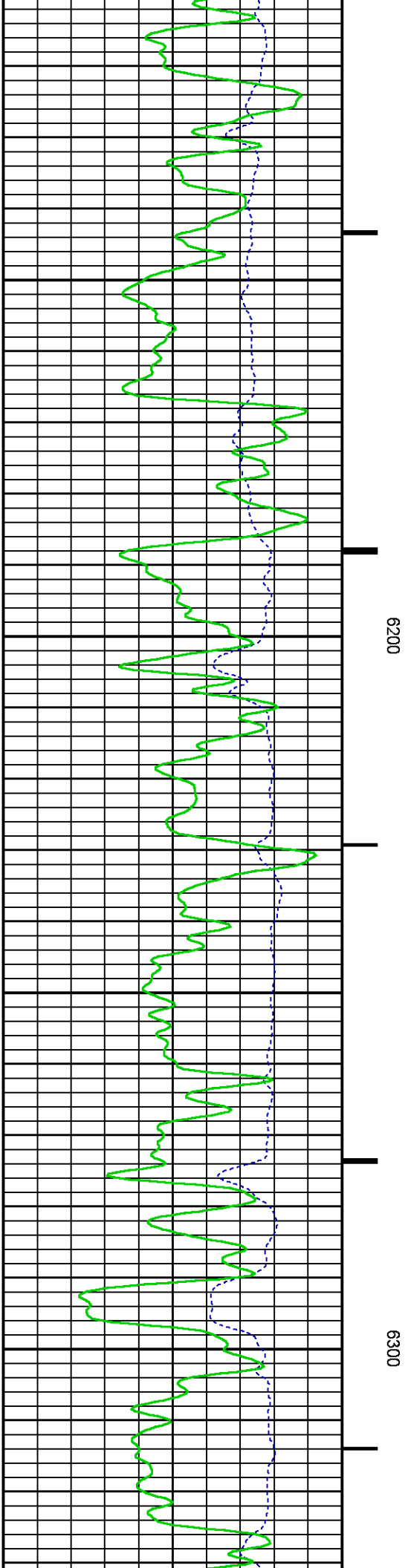
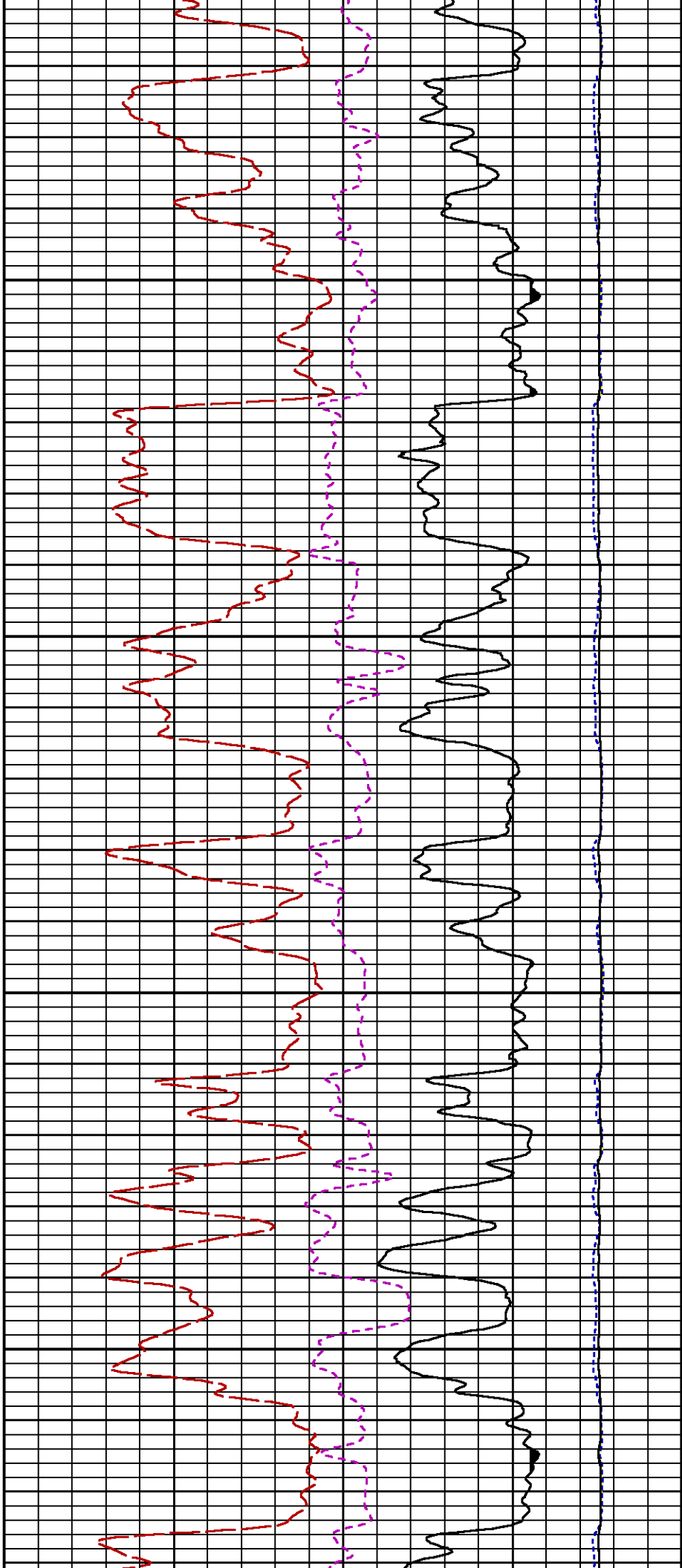
5500

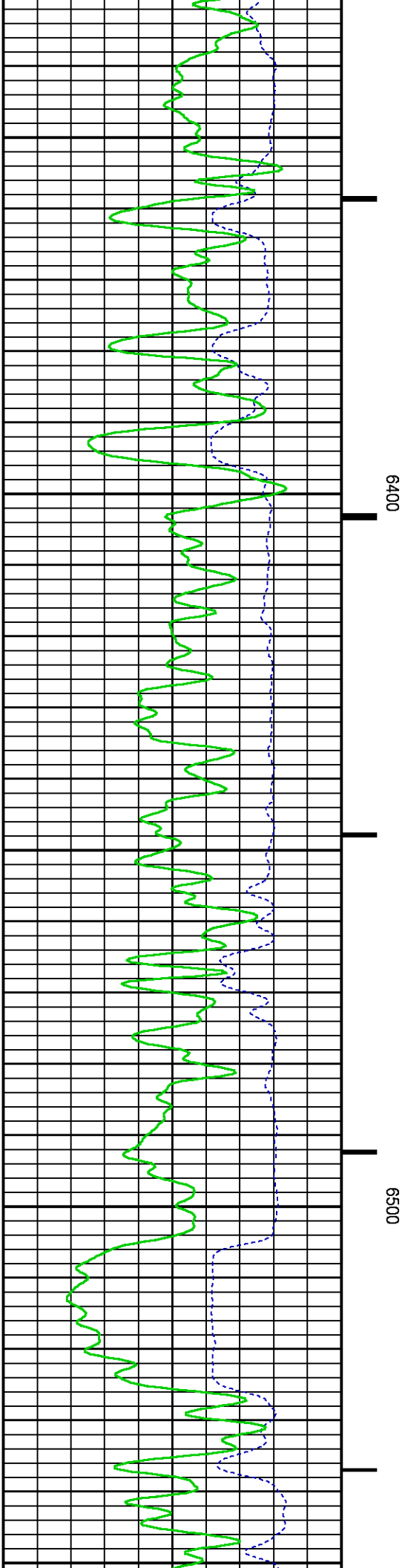
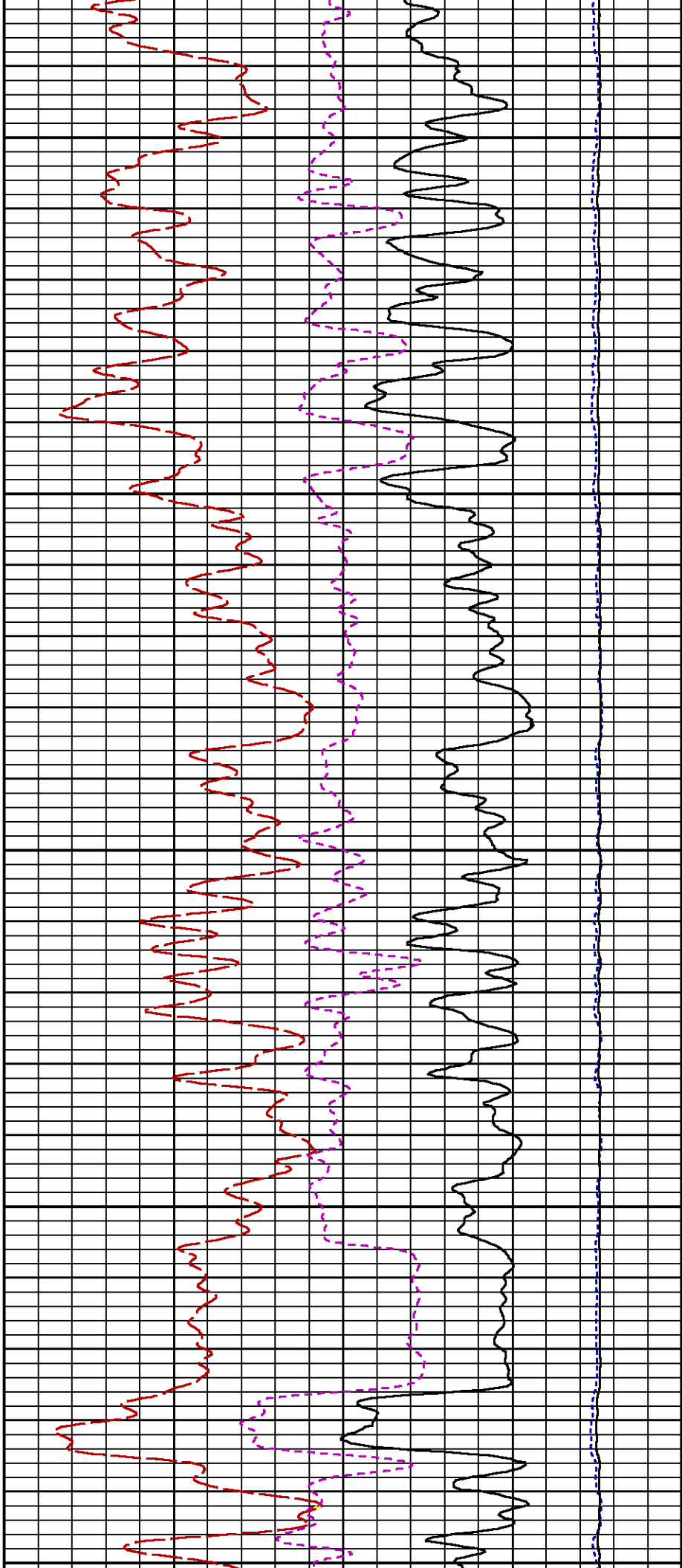
5600

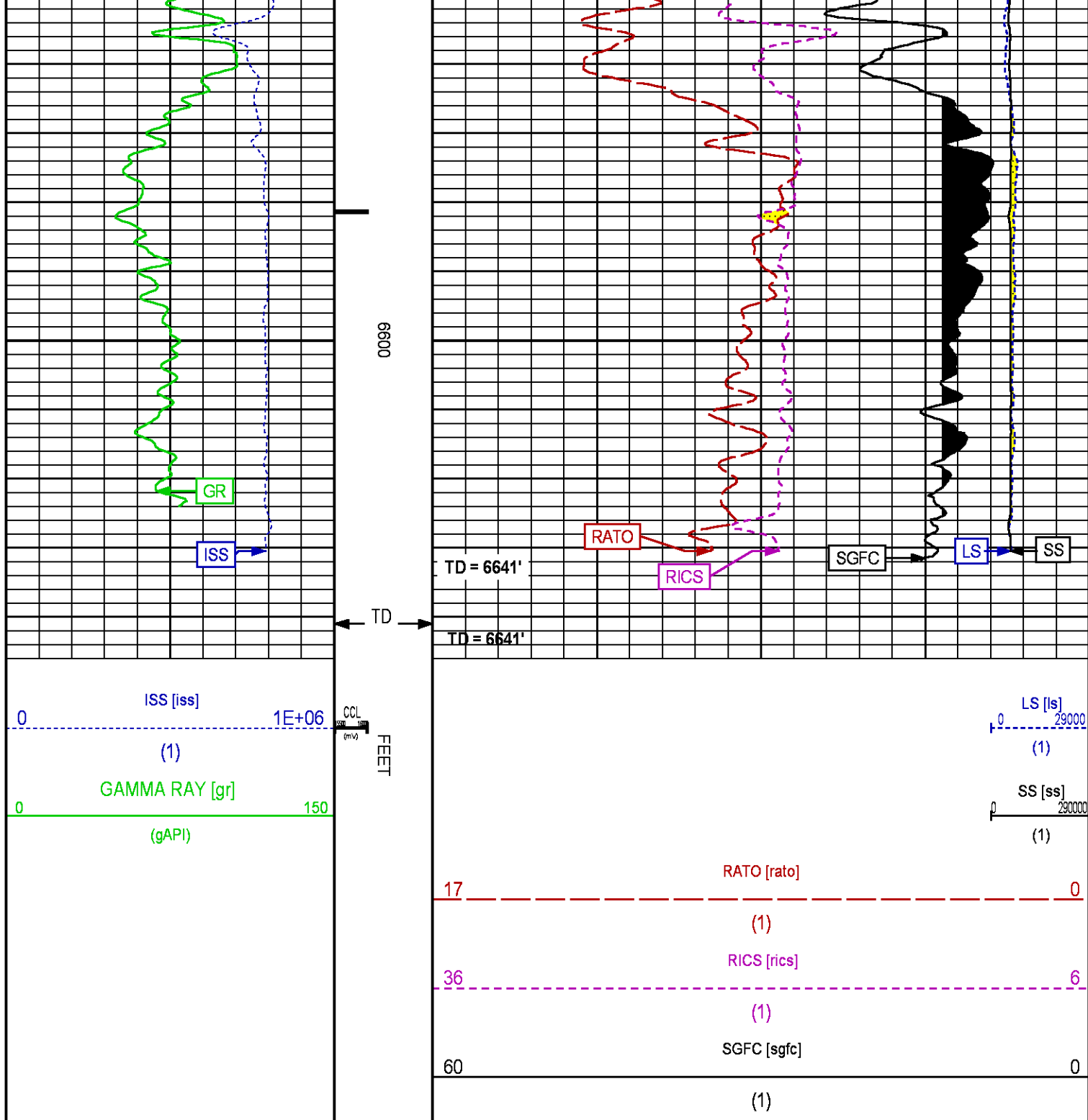












REPEAT SECTION PNC 3-D MODE

FILE:	/dat1a/086868/n012e01.prm		
LOGGING MODE:	DEPTH	DIRECTION:	UP
TOP DEPTH:	6310.000 ft	BOTTOM DEPTH:	6679.508 ft

SYMMETRIC FILTER				
MEASUREMENT TYPE	PARAMETER	VALUE	UNITS	INTERVAL (ft)
GR	FILTER ()	medium (1)		TOP BOTTOM

RAL CCL PROCESSING				
MEASUREMENT TYPE	PARAMETER	VALUE	UNITS	INTERVAL (ft)
CCL FLOOR	CCL FLOOR	0		TOP BOTTOM

PARAMETER AND FILTER SUMMARY REPORT					
FILE:		/dat1a/086868/n354h01.prm			
LOGGING MODE:		DEPTH	DIRECTION:		UP
TOP DEPTH:		5795.500 ft	BOTTOM DEPTH:		6127.584 ft
SYMMETRIC FILTER					
MEASUREMENT TYPE	PARAMETER	VALUE	UNITS	INTERVAL (ft)	
GR	FILTER ()	medium (1)		TOP	BOTTOM
RPM PROCESSING					
MEASUREMENT TYPE	PARAMETER	VALUE	UNITS	INTERVAL (ft)	
PNC Parameters	BOREHOLE CONTENTS	FLUID		TOP	BOTTOM
	OPEN/CASED HOLE	CASED HOLE		"	"
	BOREHOLE SIZE	8.75	in	"	"
	CASING SIZE	4.50	in	"	"
	MATRIX	SANDSTONE		"	"
	CORRECTION BUFFER	11		"	"

CURVE DESCRIPTION REPORT		
CURVE NAME	CREATION DATE	CURVE DESCRIPTION
F1:CCL	Jun 9 08:17:21 2014	CASING COLLAR LOCATOR
F1:GR	Jun 9 08:17:21 2014	GAMMA RAY
F1:ISS	Jun 9 11:00:40 2014	INELASTIC SHORT SPACE COUNT RATE
F1:LS	Jun 9 11:00:40 2014	LONG SPACE COUNT RATE
F1:RATO	Jun 9 11:00:40 2014	SHORT/LONG SPACE COUNT RATE RATIO
F1:RICS	Jun 9 11:00:40 2014	SHORT SPACE INELASTIC TO CAPTURE COUNT RATE RATIO (ISS/CSS)
F1:SGFC	Jun 9 11:00:40 2014	CORRECTED FORMATION SIGMA
F1:SS	Jun 9 11:00:40 2014	SHORT SPACE COUNT RATE

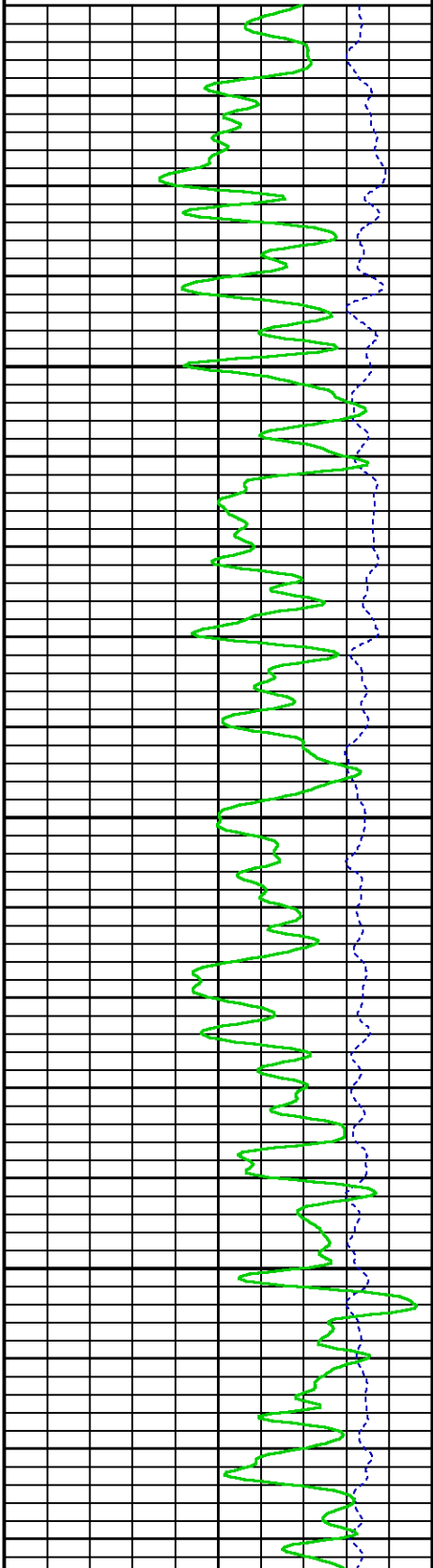
CURVE MEASURE POINT OFFSET							
CURVE	OFFSET (ft)	CURVE	OFFSET (ft)	CURVE	OFFSET (ft)	CURVE	OFFSET (ft)
CCL	8.50	ISS	9.50	RATO	9.50	SGFC	9.50
GR	6.50	LS	9.50	RICS	9.50	SS	9.50

Presentation	: HL6670:/dat1a/086868/RPM_REPEAT.fvpdf [5"/100' Scale]
Plot Interval	: 5810 - 6110 Feet
Data File 1	: F1 : HL6670:/dat1a/086868/RPM_REPEAT.xtf
Created On	: Jun 9 08:17:21 2014
Company	: WPX ENERGY INC
Well	: C & C ENERGY GM 322-13
Field	: GRAND VALLEY
File Interval	: 5780.75 - 6696.25 Feet
OCT	: n354h



0 150

(gAPI)



5900

0 290000

(1)

17 0

RATO [rato]

(1)

36 6

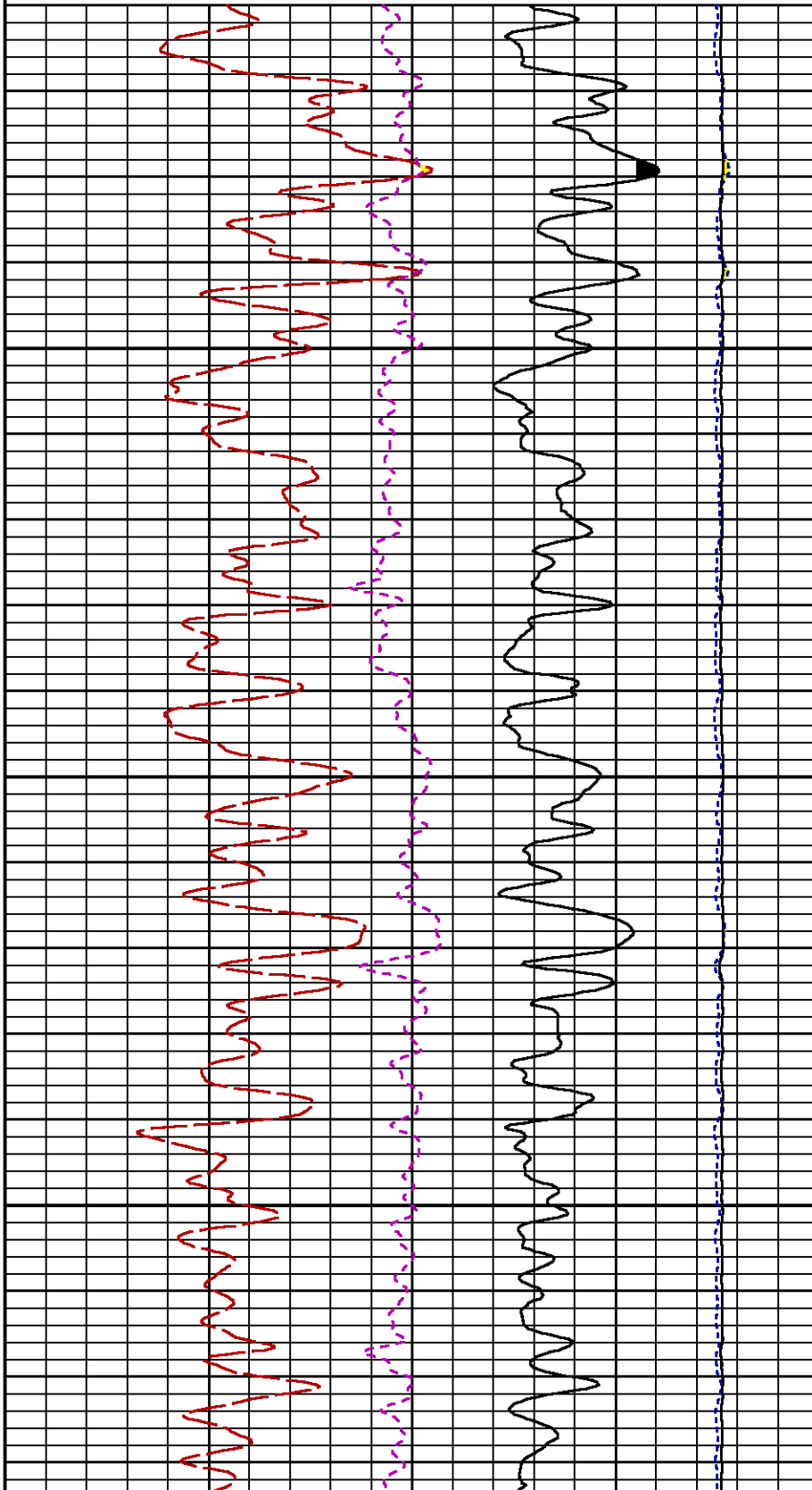
RICS [rics]

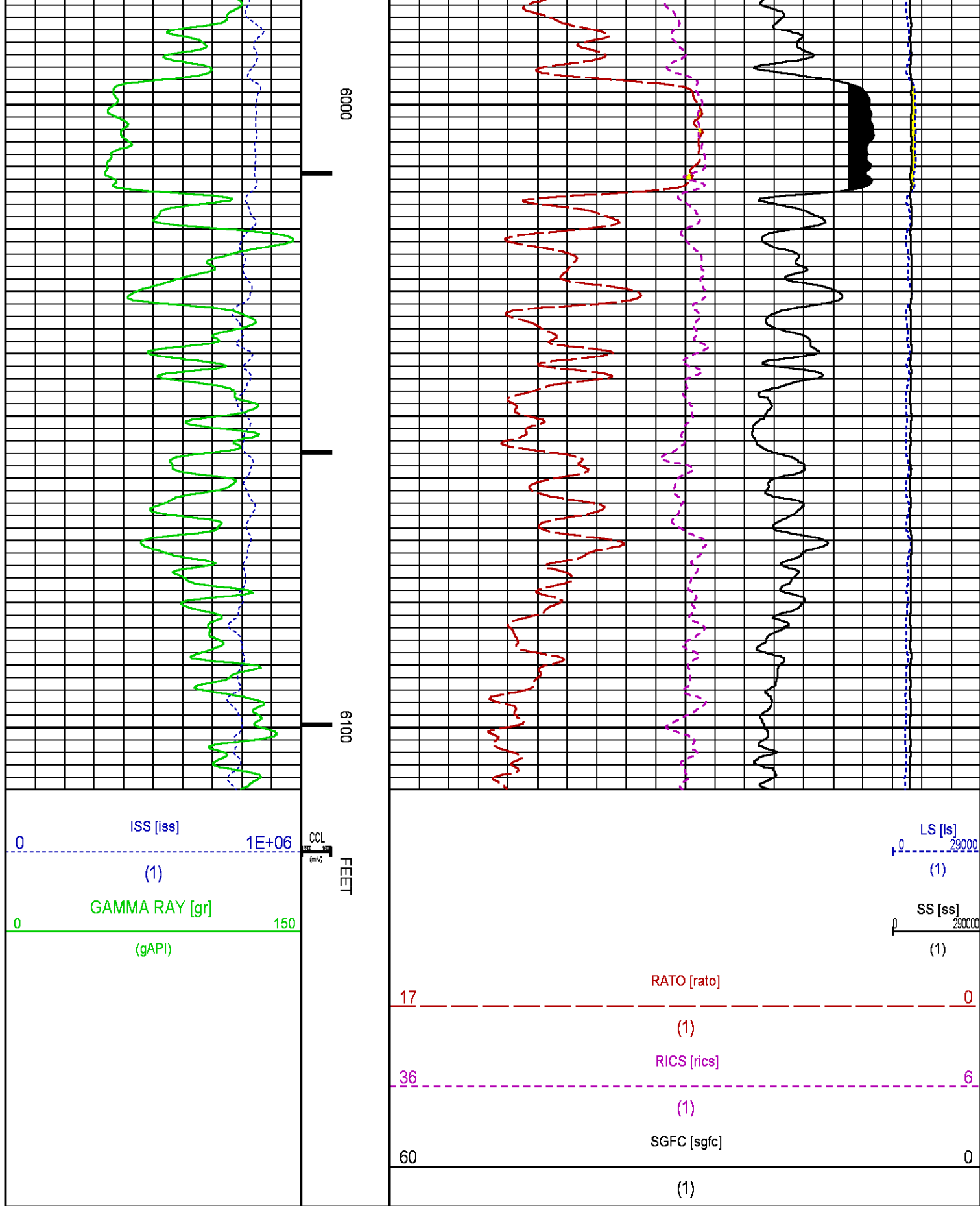
(1)

60 0

SGFC [sgfc]

(1)





CALIBRATION / VERIFICATION SUMMARY

GR PRIMARY CALIBRATION SUMMARY

TOOL #: 2812LA 11701636

DATE/TIME PERFORMED: Sat Jun 7 13:49:20 2014

UNIT #: 3880TA HL6670

CALB JIG #: 4702NK DA-041

	BACKGROUND (cts/s)	CALBRTR ON (cts/s)	CR DIFF (cts/s)	MULT	BACKGROUND (gAPI)	CALBRTR ON (gAPI)	CALBRTR (gAPI)
GR	64.73	269.38	204.6	1.026	66.43	276.43	210

GR PRIMARY VERIFICATION SUMMARY

TOOL #: 2812LA 11701636

DATE/TIME PERFORMED: Sat Jun 7 13:51:47 2014

UNIT #: 3880TA HL6670

VERI JIG #: 4702NK DA-041

	BACKGROUND (cts/s)	CALBRTR ON (cts/s)	MULT	BACKGROUND (gAPI)	CALBRTR ON (gAPI)	DIFF. (gAPI)
GR	62.22	269.36	1.026	63.85	276.40	212.55
						200.00 220.00

RPM_PNC_3D PRIMARY CALIBRATION SUMMARY

TOOL: 8283PA 10466231

DATE/TIME PERFORMED: Sat Jun 7 13:46:01 2014

UNIT: 3880TA HL6670

CALIBRATOR: 2437XB 112674

SOURCE: 8281AA 11724361

HOURS: 8281AA 150

	ISS	Mtr Vlts (V)	SS Gain	LS Gain	XLS Gain	EA Temp (degF)	Sync Delay (usec)	RCAL
Raw Data	793110	120	2274	2285	2265	136	7	0.9713

Interpolated	1300000	142	2257	2280	2263
--------------	---------	-----	------	------	------

	ISS	BKS	BKL	BKX	SGA1	SDA1	SGA2	SDA2
Raw Data	793110	6702	1051	147	26.05	0.15	24.16	0.33
					25.35 26.40	0.00 0.20	23.60 24.80	0.00 0.40

	ISS	ILS	IXS	SS	SS2	LS	CSS	CLS
Raw Data	793110	163084	25428	88862	31655	8202	53870	13116
Fit Quality %		1.050	1.105	1.067	1.070	1.105	1.011	1.080

	ISS	RBOR	RIN ISS/LS	RIN13 ISS/XS	RICS ISS/CSS	RATO SS/LS	RTWO SS2/LS	RONE CSS/CLS
Raw Data	793110	1.44	4.86	31.21	14.72	10.84	3.86	4.11
		1.42 1.45	3.55 5.52	22.20 32.70	10.99 16.34	10.06 11.10	3.57 3.95	3.76 4.22
Fit Quality %		0.032	0.127	0.067	0.089	0.111	0.100	0.071
Reduced	1399095	1.43	4.86	31.17	14.69	10.86	3.87	4.11
		1.42 1.45	4.33 5.52	27.60 32.70	13.70 16.34	10.06 11.10	3.57 3.95	3.76 4.22

INSTRUMENT CONFIGURATION

29.21'

PCM POWER SUPPLY

Diameter : 1.70"
Length : 3.86'
Weight : 18 lbs
Series : 8250EA
Mnemonic : PCM

TELEMETRY / CCL

Diameter : 1.70"
Length : 4.46'
Weight : 20 lbs
Series : 8248ED
Mnemonic : PCM
Measure Point: 1.00': CCL MP

CCL MP 21.88'

SONDEX GAMMA RAY

Diameter : 1.69"
Length : 2.17'
Weight : 10 lbs
Series : 2812LA
Mnemonic : GR
Measure Point: 0.62': GR MP

GR MP 19.33'

RPM ELECTRONICS

Diameter : 1.70"
Length : 4.48'
Weight : 16 lbs
Series : 8281EA
Mnemonic : RPM

RPM C DETECTOR SECTION

Diameter : 1.70"
Length : 9.40'
Weight : 41 lbs
Series : 8283PA
Mnemonic : RPM
Measure Point: 5.45': XLS DETECTOR
Measure Point: 5.04': LS DETECTOR
Measure Point: 4.79': SS DETECTOR

XLS DETECTOR 10.27'
LS DETECTOR 9.86'
SS DETECTOR 9.61'

RPM SOURCE SECTION

Diameter : 1.70"
Length : 4.70'

Weight : 18 lbs
Series : 8281FA
Mnemonic : RPM

BULL PLUG 1 11/16

0.00'

TOTAL LENGTH: 29.21'
TOTAL WEIGHT: 124 lbs
MAX DIAMETER: 0'1.70"



COMPANY
WELL
FIELD
COUNTY

WPX ENERGY INC
C & C ENERGY GM 322-13
GRAND VALLEY
GARFIELD STATE CO

FILE NO:
CH086868
API NO:
05045222700000

LOCATION:

SHL: 269' FSL & 1022' FWL (12 7S 96W)
BHL: 1746' FNL & 2192' FWL (13 7S 96W)

ELEVATIONS:

KB 5165 FT
DF
GL 5141 FT

13 7S 96W
GM 24-12 PAD
H & P 318

SEC 13 TWP 7S RGE 96W

DATE 09-Jun-2014

