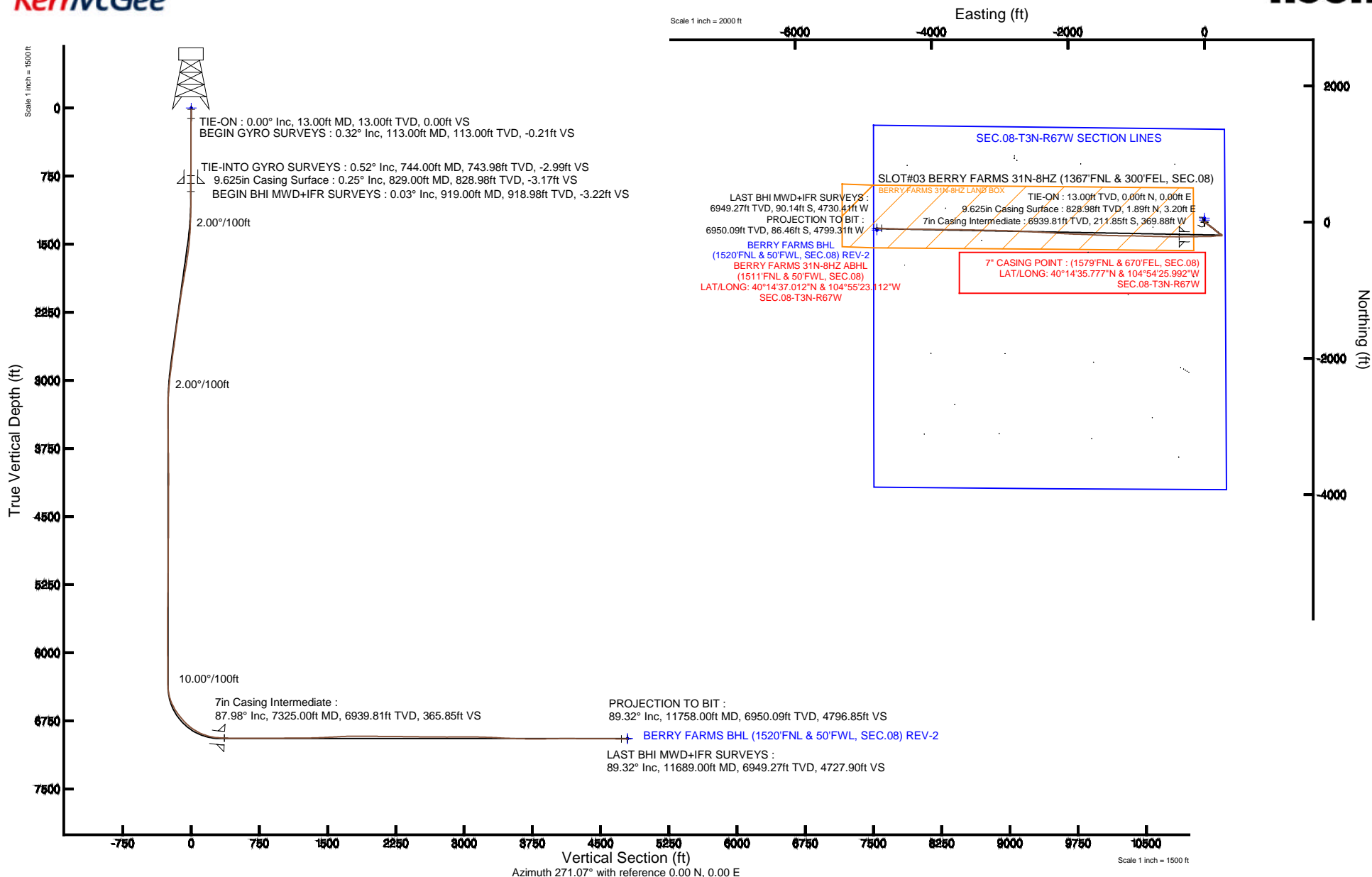


KERR-MCGEE OIL & GAS ONSHORE LP

Location: COLORADO Slot: SLOT#03 BERRY FARMS 31N-8HZ (1367'FNL & 300'FEL, SEC.08)
 Field: WELD COUNTY (KERR MCGEE) Well: BERRY FARMS 31N-8HZ
 Facility: SEC.08-T3N-R67W Wellbore: BERRY FARMS 31N-8HZ PWB

Plot reference wellpath is BERRY FARMS 31N-8HZ (REV-A.0) PWP

True vertical depths are referenced to ENSIGN 145 (13'KB) (RKB)	Grid System: NAD83 / Lambert Colorado SP, Northern Zone (501), US feet
Measured depths are referenced to ENSIGN 145 (13'KB) (RKB)	North Reference: True north
ENSGN 145 (13'KB) (RKB) to Mean Sea Level: 4833 feet	Scale: True distance
Mean Sea Level to Mud line (At Slot: SLOT#03 BERRY FARMS 31N-8HZ (1367'FNL & 300'FEL, SEC.08)): 0 feet	Depths are in feet
Coordinates are in feet referenced to Slot	Created by: ingmjmr on 7/8/2014



Actual Wellpath Report

BERRY FARMS 31N-8HZ AWP

Page 1 of 7

REFERENCE WELLPATH IDENTIFICATION

Operator	KERR-MCGEE OIL & GAS ONSHORE LP	Slot	SLOT#03 BERRY FARMS 31N-8HZ (1367'FNL & 300'FEL, SEC.08)
Area	COLORADO	Well	BERRY FARMS 31N-8HZ
Field	WELD COUNTY (KERR MCGEE)	Wellbore	BERRY FARMS 31N-8HZ AWB
Facility	SEC.08-T3N-R67W		

REPORT SETUP INFORMATION

Projection System	NAD83 / Lambert Colorado SP, Northern Zone (501), US feet	Software System	WellArchitect® 4.0.0
North Reference	True	User	Ingmjmr
Scale	0.999957	Report Generated	7/8/2014 at 12:39:33 PM
Convergence at slot	n/a	Database/Source file	Anadarko Local/BERRY_FARMS_31N-8HZ_AWB.xml

WELLPATH LOCATION

	Local coordinates		Grid coordinates		Geographic coordinates	
	North[ft]	East[ft]	Easting[US ft]	Northing[US ft]	Latitude	Longitude
Slot Location	-60.11	0.08	3165844.26	1332233.01	40°14'37.871"N	104°54'21.222"W
Facility Reference Pt			3165843.78	1332293.12	40°14'38.465"N	104°54'21.223"W
Field Reference Pt			3197771.84	1268891.29	40°04'09.600"N	104°47'36.000"W

WELLPATH DATUM

Calculation method	Minimum curvature	ENSIGN 145 (13'KB) (RKB) to Facility Vertical Datum	4833.00ft
Horizontal Reference Pt	Slot	ENSIGN 145 (13'KB) (RKB) to Mean Sea Level	4833.00ft
Vertical Reference Pt	ENSIGN 145 (13'KB) (RKB)	ENSIGN 145 (13'KB) (RKB) to Mud Line at Slot (SLOT#03 BERRY FARMS 31N-8HZ (1367'FNL & 300'FEL, SEC.08))	4833.00ft
MD Reference Pt	ENSIGN 145 (13'KB) (RKB)	Section Origin	N 0.00, E 0.00 ft
Field Vertical Reference	Mean Sea Level	Section Azimuth	271.07°

REFERENCE WELLPATH IDENTIFICATION

Operator	KERR-MCGEE OIL & GAS ONSHORE LP	Slot	SLOT#03 BERRY FARMS 31N-8HZ (1367'FNL & 300'FEL, SEC.08)
Area	COLORADO	Well	BERRY FARMS 31N-8HZ
Field	WELD COUNTY (KERR MCGEE)	Wellbore	BERRY FARMS 31N-8HZ AWP
Facility	SEC.08-T3N-R67W		

WELLPATH DATA (120 stations) † = interpolated/extrapolated station

MD [ft]	Inclination [°]	Azimuth [°]	TVD [ft]	Vert Sect [ft]	North [ft]	East [ft]	Latitude	Longitude	DLS [°/100ft]	Comments
0.00†	0.000	131.620	0.00	0.00	0.00	0.00	40°14'37.871"N	104°54'21.222"W	0.00	
13.00	0.000	131.620	13.00	0.00	0.00	0.00	40°14'37.871"N	104°54'21.222"W	0.00	TIE-ON
113.00	0.320	131.620	113.00	-0.21	-0.19	0.21	40°14'37.869"N	104°54'21.219"W	0.32	BEGIN GYRO SURVEYS
213.00	0.440	119.870	213.00	-0.76	-0.56	0.75	40°14'37.865"N	104°54'21.212"W	0.14	
313.00	0.270	146.540	313.00	-1.23	-0.95	1.21	40°14'37.862"N	104°54'21.206"W	0.23	
413.00	0.260	82.110	412.99	-1.59	-1.12	1.57	40°14'37.860"N	104°54'21.202"W	0.28	
513.00	0.430	44.810	512.99	-2.07	-0.82	2.06	40°14'37.863"N	104°54'21.195"W	0.27	
613.00	0.580	19.350	612.99	-2.49	-0.07	2.49	40°14'37.870"N	104°54'21.190"W	0.27	
713.00	0.760	20.940	712.98	-2.87	1.02	2.89	40°14'37.881"N	104°54'21.185"W	0.18	
744.00	0.520	19.240	743.98	-2.99	1.35	3.01	40°14'37.884"N	104°54'21.183"W	0.78	TIE-INTO GYRO SURVEYS
919.00	0.030	197.160	918.98	-3.22	2.05	3.26	40°14'37.891"N	104°54'21.180"W	0.31	BEGIN BHI MWD+IFR SURVEYS
1012.00	0.990	208.010	1011.97	-2.85	1.32	2.88	40°14'37.884"N	104°54'21.185"W	1.03	
1106.00	1.140	143.330	1105.96	-3.06	-0.15	3.05	40°14'37.870"N	104°54'21.183"W	1.22	
1200.00	2.220	107.490	1199.92	-5.38	-1.44	5.35	40°14'37.857"N	104°54'21.153"W	1.55	
1293.00	2.780	136.630	1292.84	-8.68	-3.62	8.62	40°14'37.835"N	104°54'21.111"W	1.47	
1387.00	5.050	129.040	1386.61	-13.54	-7.89	13.40	40°14'37.793"N	104°54'21.049"W	2.47	
1480.00	7.240	129.140	1479.07	-21.38	-14.17	21.12	40°14'37.731"N	104°54'20.950"W	2.35	
1574.00	9.090	125.900	1572.11	-32.14	-22.26	31.73	40°14'37.651"N	104°54'20.813"W	2.03	
1667.00	10.510	127.820	1663.75	-44.97	-31.77	44.38	40°14'37.557"N	104°54'20.650"W	1.57	
1761.00	11.730	127.200	1755.99	-59.56	-42.80	58.77	40°14'37.448"N	104°54'20.464"W	1.30	
1854.00	11.440	124.750	1847.09	-74.87	-53.78	73.87	40°14'37.340"N	104°54'20.269"W	0.61	
1948.00	11.680	123.550	1939.19	-90.65	-64.35	89.46	40°14'37.235"N	104°54'20.068"W	0.36	
2041.00	10.410	123.950	2030.46	-105.65	-74.24	104.28	40°14'37.137"N	104°54'19.877"W	1.37	
2134.00	10.950	130.390	2121.85	-119.54	-84.66	117.98	40°14'37.034"N	104°54'19.701"W	1.41	
2228.00	9.810	130.040	2214.32	-132.67	-95.60	130.91	40°14'36.926"N	104°54'19.534"W	1.21	
2321.00	10.690	132.150	2305.83	-145.34	-106.48	143.37	40°14'36.819"N	104°54'19.373"W	1.03	
2415.00	10.490	132.430	2398.23	-158.33	-118.11	156.15	40°14'36.704"N	104°54'19.208"W	0.22	
2508.00	10.350	132.720	2489.70	-170.93	-129.49	168.54	40°14'36.591"N	104°54'19.049"W	0.16	
2598.00	10.070	132.210	2578.27	-182.90	-140.26	180.30	40°14'36.485"N	104°54'18.897"W	0.33	
2688.00	9.570	131.210	2666.95	-194.54	-150.47	191.76	40°14'36.384"N	104°54'18.749"W	0.59	

Actual Wellpath Report

BERRY FARMS 31N-8HZ AWP

Page 3 of 7

REFERENCE WELLPATH IDENTIFICATION

Operator	KERR-MCGEE OIL & GAS ONSHORE LP	Slot	SLOT#03 BERRY FARMS 31N-8HZ (1367'FNL & 300'FEL, SEC.08)
Area	COLORADO	Well	BERRY FARMS 31N-8HZ
Field	WELD COUNTY (KERR MCGEE)	Wellbore	BERRY FARMS 31N-8HZ AWP
Facility	SEC.08-T3N-R67W		

WELLPATH DATA (120 stations)

MD [ft]	Inclination [°]	Azimuth [°]	TVD [ft]	Vert Sect [ft]	North [ft]	East [ft]	Latitude	Longitude	DLS [°/100ft]	Comments
2778.00	9.230	128.310	2755.74	-206.01	-159.88	203.05	40°14'36.291"N	104°54'18.604"W	0.65	
2868.00	8.760	124.130	2844.64	-217.50	-168.20	214.39	40°14'36.209"N	104°54'18.457"W	0.89	
2958.00	8.180	119.230	2933.66	-228.89	-175.17	225.65	40°14'36.140"N	104°54'18.312"W	1.03	
3048.00	5.920	111.470	3022.97	-238.88	-179.99	235.56	40°14'36.092"N	104°54'18.184"W	2.72	
3138.00	4.180	112.390	3112.62	-246.29	-182.94	242.91	40°14'36.063"N	104°54'18.090"W	1.94	
3229.00	2.100	123.270	3203.48	-250.79	-185.12	247.37	40°14'36.042"N	104°54'18.032"W	2.37	
3319.00	1.380	76.290	3293.44	-253.23	-185.77	249.80	40°14'36.035"N	104°54'18.001"W	1.71	
3409.00	1.200	330.410	3383.43	-253.80	-184.69	250.39	40°14'36.046"N	104°54'17.993"W	2.29	
3499.00	0.610	314.660	3473.42	-252.97	-183.53	249.58	40°14'36.057"N	104°54'18.003"W	0.71	
3769.00	0.560	278.540	3743.40	-250.62	-182.33	247.26	40°14'36.069"N	104°54'18.033"W	0.14	
4039.00	0.730	283.520	4013.39	-247.64	-181.73	244.28	40°14'36.075"N	104°54'18.072"W	0.07	
4129.00	0.680	159.110	4103.38	-247.28	-182.10	243.91	40°14'36.072"N	104°54'18.077"W	1.39	
4398.00	0.300	112.290	4372.37	-248.53	-183.85	245.13	40°14'36.054"N	104°54'18.061"W	0.19	
4758.00	0.290	139.650	4732.37	-250.01	-184.91	246.60	40°14'36.044"N	104°54'18.042"W	0.04	
5118.00	0.610	121.170	5092.36	-252.27	-186.59	248.82	40°14'36.027"N	104°54'18.013"W	0.10	
5478.00	1.020	116.890	5452.32	-256.81	-189.03	253.32	40°14'36.003"N	104°54'17.955"W	0.12	
5568.00	1.240	159.840	5542.30	-257.89	-190.31	254.37	40°14'35.990"N	104°54'17.942"W	0.95	
5928.00	0.620	211.350	5902.26	-258.32	-195.63	254.70	40°14'35.938"N	104°54'17.937"W	0.27	
6288.00	0.500	240.590	6262.24	-255.98	-198.06	252.32	40°14'35.914"N	104°54'17.968"W	0.08	
6378.00	0.690	255.170	6352.24	-255.12	-198.40	251.45	40°14'35.910"N	104°54'17.979"W	0.27	
6423.00	5.120	266.710	6397.17	-252.86	-198.58	249.19	40°14'35.909"N	104°54'18.009"W	9.88	
6468.00	9.270	268.280	6441.81	-247.23	-198.80	243.56	40°14'35.906"N	104°54'18.081"W	9.23	
6513.00	15.440	266.980	6485.74	-237.63	-199.23	233.94	40°14'35.902"N	104°54'18.205"W	13.72	
6558.00	20.480	268.710	6528.54	-223.78	-199.72	220.08	40°14'35.897"N	104°54'18.384"W	11.26	
6603.00	25.980	268.950	6569.87	-206.05	-200.08	202.34	40°14'35.894"N	104°54'18.613"W	12.22	
6648.00	29.200	268.230	6609.75	-185.23	-200.60	181.51	40°14'35.889"N	104°54'18.881"W	7.19	
6693.00	33.010	264.720	6648.28	-162.08	-202.07	158.32	40°14'35.874"N	104°54'19.180"W	9.37	
6738.00	37.570	263.830	6685.00	-136.27	-204.67	132.46	40°14'35.848"N	104°54'19.514"W	10.20	
6783.00	39.660	264.750	6720.16	-108.38	-207.46	104.52	40°14'35.821"N	104°54'19.874"W	4.82	
6828.00	42.720	268.090	6754.02	-78.86	-209.28	74.95	40°14'35.803"N	104°54'20.255"W	8.37	

REFERENCE WELLPATH IDENTIFICATION

Operator	KERR-MCGEE OIL & GAS ONSHORE LP	Slot	SLOT#03 BERRY FARMS 31N-8HZ (1367'FNL & 300'FEL, SEC.08)
Area	COLORADO	Well	BERRY FARMS 31N-8HZ
Field	WELD COUNTY (KERR MCGEE)	Wellbore	BERRY FARMS 31N-8HZ AWP
Facility	SEC.08-T3N-R67W		

WELLPATH DATA (120 stations) † = interpolated/extrapolated station

MD [ft]	Inclination [°]	Azimuth [°]	TVD [ft]	Vert Sect [ft]	North [ft]	East [ft]	Latitude	Longitude	DLS [°/100ft]	Comments
6873.00	46.940	268.430	6785.93	-47.18	-210.24	43.25	40°14'35.793"N	104°54'20.664"W	9.39	
6918.00	51.290	270.790	6815.38	-13.18	-210.45	9.24	40°14'35.791"N	104°54'21.103"W	10.45	
6963.00	56.040	269.930	6842.03	23.06	-210.23	-27.00	40°14'35.793"N	104°54'21.570"W	10.67	
7008.00	60.830	268.730	6865.58	61.37	-210.69	-65.32	40°14'35.789"N	104°54'22.064"W	10.88	
7053.00	65.790	268.760	6885.79	101.53	-211.57	-105.51	40°14'35.780"N	104°54'22.583"W	11.02	
7098.00	69.230	269.180	6903.00	143.07	-212.32	-147.07	40°14'35.773"N	104°54'23.119"W	7.69	
7143.00	73.920	269.430	6917.22	185.73	-212.83	-189.75	40°14'35.768"N	104°54'23.669"W	10.44	
7188.00	80.190	269.860	6927.29	229.55	-213.10	-233.58	40°14'35.765"N	104°54'24.234"W	13.96	
7233.00	83.400	270.830	6933.71	274.08	-212.83	-278.11	40°14'35.768"N	104°54'24.808"W	7.45	
7288.00	87.160	270.660	6938.24	328.89	-212.12	-332.91	40°14'35.775"N	104°54'25.515"W	6.84	
7325.00†	87.978	270.178	6939.81	365.85	-211.85	-369.88	40°14'35.777"N	104°54'25.992"W	2.57	7" CASING POINT
7387.00	89.350	269.370	6941.25	427.82	-212.10	-431.86	40°14'35.775"N	104°54'26.791"W	2.57	
7477.00	90.460	270.410	6941.40	517.79	-212.27	-521.86	40°14'35.773"N	104°54'27.952"W	1.69	
7567.00	89.870	270.720	6941.14	607.79	-211.38	-611.85	40°14'35.782"N	104°54'29.112"W	0.74	
7657.00	89.810	271.270	6941.40	697.79	-209.82	-701.84	40°14'35.797"N	104°54'30.273"W	0.61	
7747.00	89.560	271.720	6941.89	787.78	-207.47	-791.80	40°14'35.821"N	104°54'31.433"W	0.57	
7837.00	89.900	271.570	6942.31	877.78	-204.89	-881.77	40°14'35.846"N	104°54'32.593"W	0.41	
7927.00	90.860	271.660	6941.72	967.77	-202.35	-971.73	40°14'35.871"N	104°54'33.753"W	1.07	
8017.00	90.950	271.320	6940.30	1057.76	-200.01	-1061.69	40°14'35.894"N	104°54'34.913"W	0.39	
8107.00	90.180	270.250	6939.41	1147.75	-198.78	-1151.67	40°14'35.906"N	104°54'36.073"W	1.46	
8197.00	90.180	270.380	6939.13	1237.74	-198.28	-1241.67	40°14'35.911"N	104°54'37.234"W	0.14	
8287.00	91.110	270.760	6938.11	1327.73	-197.39	-1331.66	40°14'35.920"N	104°54'38.394"W	1.12	
8377.00	92.300	272.510	6935.44	1417.68	-194.82	-1421.58	40°14'35.945"N	104°54'39.554"W	2.35	
8467.00	93.290	272.210	6931.05	1507.55	-191.12	-1511.39	40°14'35.982"N	104°54'40.712"W	1.15	
8557.00	93.260	272.750	6925.90	1597.38	-187.23	-1601.16	40°14'36.020"N	104°54'41.870"W	0.60	
8647.00	92.240	273.410	6921.59	1687.22	-182.40	-1690.92	40°14'36.068"N	104°54'43.027"W	1.35	
8737.00	90.770	271.520	6919.22	1777.15	-178.53	-1780.80	40°14'36.106"N	104°54'44.186"W	2.66	
8827.00	89.120	271.040	6919.31	1867.15	-176.52	-1870.78	40°14'36.126"N	104°54'45.347"W	1.91	
8917.00	89.690	273.140	6920.24	1957.12	-173.24	-1960.71	40°14'36.158"N	104°54'46.506"W	2.42	
9007.00	89.630	273.230	6920.78	2047.06	-168.24	-2050.57	40°14'36.208"N	104°54'47.665"W	0.12	

REFERENCE WELLPATH IDENTIFICATION

Operator	KERR-MCGEE OIL & GAS ONSHORE LP	Slot	SLOT#03 BERRY FARMS 31N-8HZ (1367'FNL & 300'FEL, SEC.08)
Area	COLORADO	Well	BERRY FARMS 31N-8HZ
Field	WELD COUNTY (KERR MCGEE)	Wellbore	BERRY FARMS 31N-8HZ AWP
Facility	SEC.08-T3N-R67W		

WELLPATH DATA (120 stations)

MD [ft]	Inclination [°]	Azimuth [°]	TVD [ft]	Vert Sect [ft]	North [ft]	East [ft]	Latitude	Longitude	DLS [°/100ft]	Comments
9097.00	89.750	273.800	6921.27	2136.98	-162.72	-2140.40	40°14'36.262"N	104°54'48.824"W	0.65	
9187.00	89.540	273.740	6921.82	2226.88	-156.80	-2230.20	40°14'36.320"N	104°54'49.982"W	0.24	
9277.00	88.740	272.810	6923.17	2316.80	-151.66	-2320.04	40°14'36.371"N	104°54'51.140"W	1.36	
9367.00	89.510	273.340	6924.55	2406.73	-146.84	-2409.90	40°14'36.419"N	104°54'52.299"W	1.04	
9456.00	89.090	272.860	6925.64	2495.67	-142.02	-2498.76	40°14'36.466"N	104°54'53.445"W	0.72	
9546.00	89.410	272.800	6926.81	2585.62	-137.58	-2588.64	40°14'36.510"N	104°54'54.604"W	0.36	
9636.00	89.660	272.920	6927.54	2675.57	-133.09	-2678.53	40°14'36.554"N	104°54'55.763"W	0.31	
9726.00	89.570	272.220	6928.15	2765.54	-129.05	-2768.44	40°14'36.594"N	104°54'56.923"W	0.78	
9816.00	90.400	271.930	6928.17	2855.52	-125.80	-2858.38	40°14'36.626"N	104°54'58.082"W	0.98	
9906.00	89.720	271.370	6928.08	2945.52	-123.20	-2948.34	40°14'36.652"N	104°54'59.242"W	0.98	
9996.00	90.460	270.990	6927.94	3035.52	-121.35	-3038.32	40°14'36.670"N	104°55'00.403"W	0.92	
10086.00	89.720	271.080	6927.80	3125.52	-119.73	-3128.30	40°14'36.686"N	104°55'01.563"W	0.83	
10176.00	88.050	270.970	6929.55	3215.50	-118.12	-3218.27	40°14'36.702"N	104°55'02.723"W	1.86	
10266.00	87.220	271.450	6933.26	3305.42	-116.22	-3308.17	40°14'36.720"N	104°55'03.883"W	1.07	
10356.00	86.850	271.420	6937.92	3395.29	-113.97	-3398.02	40°14'36.742"N	104°55'05.041"W	0.41	
10446.00	87.160	270.850	6942.62	3485.17	-112.19	-3487.88	40°14'36.760"N	104°55'06.200"W	0.72	
10536.00	88.080	270.740	6946.36	3575.09	-110.94	-3577.79	40°14'36.772"N	104°55'07.360"W	1.03	
10626.00	89.470	270.710	6948.28	3665.07	-109.80	-3667.76	40°14'36.783"N	104°55'08.520"W	1.54	
10716.00	89.590	270.610	6949.02	3755.06	-108.76	-3757.75	40°14'36.793"N	104°55'09.680"W	0.17	
10806.00	90.490	270.920	6948.95	3845.06	-107.56	-3847.75	40°14'36.805"N	104°55'10.841"W	1.06	
10896.00	91.110	271.010	6947.70	3935.05	-106.05	-3937.72	40°14'36.820"N	104°55'12.001"W	0.70	
10986.00	91.020	271.170	6946.03	4025.03	-104.33	-4027.69	40°14'36.837"N	104°55'13.161"W	0.20	
11076.00	90.520	271.050	6944.82	4115.03	-102.59	-4117.67	40°14'36.854"N	104°55'14.322"W	0.57	
11166.00	88.790	269.710	6945.36	4205.01	-101.99	-4207.66	40°14'36.860"N	104°55'15.482"W	2.43	
11256.00	89.290	269.790	6946.87	4294.98	-102.39	-4297.64	40°14'36.856"N	104°55'16.643"W	0.56	
11346.00	90.340	271.110	6947.16	4384.97	-101.68	-4387.64	40°14'36.862"N	104°55'17.803"W	1.87	
11436.00	89.960	271.460	6946.92	4474.97	-99.66	-4477.61	40°14'36.882"N	104°55'18.963"W	0.57	
11616.00	89.160	272.390	6948.30	4654.94	-93.62	-4657.50	40°14'36.942"N	104°55'21.283"W	0.68	
11689.00	89.320	273.060	6949.27	4727.90	-90.14	-4730.41	40°14'36.976"N	104°55'22.223"W	0.94	LAST BHI MWD+IFR SURVEYS
11758.00	89.320	273.060	6950.09	4796.85	-86.46	-4799.31	40°14'37.012"N	104°55'23.112"W	0.00	PROJECTION TO BIT

Actual Wellpath Report

BERRY FARMS 31N-8HZ AWP

Page 6 of 7

REFERENCE WELLPATH IDENTIFICATION

Operator	KERR-MCGEE OIL & GAS ONSHORE LP	Slot	SLOT#03 BERRY FARMS 31N-8HZ (1367'FNL & 300'FEL, SEC.08)
Area	COLORADO	Well	BERRY FARMS 31N-8HZ
Field	WELD COUNTY (KERR MCGEE)	Wellbore	BERRY FARMS 31N-8HZ AWP
Facility	SEC.08-T3N-R67W		

HOLE & CASING SECTIONS - Ref Wellbore: BERRY FARMS 31N-8HZ AWP Ref Wellpath: BERRY FARMS 31N-8HZ AWP

String/Diameter	Start MD [ft]	End MD [ft]	Interval [ft]	Start TVD [ft]	End TVD [ft]	Start N/S [ft]	Start E/W [ft]	End N/S [ft]	End E/W [ft]
13.5in Open Hole	13.00	829.00	816.00	13.00	828.98	0.00	0.00	1.89	3.20
9.625in Casing Surface	13.00	829.00	816.00	13.00	828.98	0.00	0.00	1.89	3.20
8.75in Open Hole	829.00	7350.00	6521.00	828.98	6940.57	1.89	3.20	-211.84	-394.87
7in Casing Intermediate	13.00	7325.00	7312.00	13.00	6939.81	0.00	0.00	-211.85	-369.88
6.125in Open Hole	7350.00	11758.00	4408.00	6940.57	6950.09	-211.84	-394.87	-86.46	-4799.31

TARGETS

Name	MD [ft]	TVD [ft]	North [ft]	East [ft]	Grid East [US ft]	Grid North [US ft]	Latitude	Longitude	Shape
SEC.08-T3N-R67W SECTION LINES		0.00	60.11	0.00	3165843.86	1332293.12	40°14'38.465"N	104°54'21.222"W	polygon
BERRY FARMS BHL (1520'FNL & 50'FWL, SEC.08) REV-2		6945.00	-95.40	-4799.17	3161046.05	1332105.47	40°14'36.924"N	104°55'23.110"W	point
BERRY FARMS BHL ON PLAT (1540'FNL & 50'FWL, SEC.08) REV-1		6945.00	-115.40	-4799.14	3161046.22	1332085.46	40°14'36.726"N	104°55'23.110"W	point
BERRY FARMS 31N-8HZ LAND BOX		7143.00	30.26	-0.31	3165843.75	1332263.26	40°14'38.170"N	104°54'21.226"W	polygon

WELLPATH COMPOSITION - Ref Wellbore: BERRY FARMS 31N-8HZ AWP Ref Wellpath: BERRY FARMS 31N-8HZ AWP

Start MD [ft]	End MD [ft]	Positional Uncertainty Model	Log Name/Comment	Wellbore
13.00	744.00	Generic gyro - continuous (Standard)	MS ENERGY SERVICES GYRO SURVEYS <113-744>	BERRY FARMS 31N-8HZ AWP
744.00	7288.00	NaviTrak (IFR)	BHI MWD+IFR SURVEYS 8 3/4" HOLE <919-7288>	BERRY FARMS 31N-8HZ AWP
7288.00	11689.00	NaviTrak (IFR)	BHI MWD+IFR SURVEYS 6 1/8" HOLE <7387-11689>	BERRY FARMS 31N-8HZ AWP
11689.00	11758.00	Blind Drilling (std)	Projection to bit	BERRY FARMS 31N-8HZ AWP

Actual Wellpath Report

BERRY FARMS 31N-8HZ AWP

Page 7 of 7

REFERENCE WELLPATH IDENTIFICATION

Operator	KERR-MCGEE OIL & GAS ONSHORE LP	Slot	SLOT#03 BERRY FARMS 31N-8HZ (1367'FNL & 300'FEL, SEC.08)
Area	COLORADO	Well	BERRY FARMS 31N-8HZ
Field	WELD COUNTY (KERR MCGEE)	Wellbore	BERRY FARMS 31N-8HZ AWP
Facility	SEC.08-T3N-R67W		

WELLPATH COMMENTS

MD [ft]	Inclination [°]	Azimuth [°]	TVD [ft]	Comment
13.00	0.000	131.620	13.00	TIE-ON
113.00	0.320	131.620	113.00	BEGIN GYRO SURVEYS
744.00	0.520	19.240	743.98	TIE-INTO GYRO SURVEYS
919.00	0.030	197.160	918.98	BEGIN BHI MWD+IFR SURVEYS
7325.00	87.978	270.178	6939.81	7" CASING POINT
11689.00	89.320	273.060	6949.27	LAST BHI MWD+IFR SURVEYS
11758.00	89.320	273.060	6950.09	PROJECTION TO BIT