

HALLIBURTON

iCem® Service

Post Job Report

ANADARKO PETROLEUM CORP - EBUS

Date: Wednesday, June 18, 2014

Berry Farms 32C-8HZ Surface

Sincerely,
Derek Trier

Table of Contents

1.1	Executive Summary	3
1.2	Cementing Job Summary	4
1.3	Planned Pumping Schedule	6
1.4	Job Overview	6
1.5	Job Event Log	7
2.0	Custom Graphs	Error! Bookmark not defined.
2.1	Custom Graph	Error! Bookmark not defined.
3.0	Appendix	Error! Bookmark not defined.

1.1 Executive Summary

Halliburton appreciates the opportunity to perform the cementing services on the **Berry Farms 32C-8HZ** cement **Surface** casing job. A pre-job safety meeting was held before the job where details of the job were discussed, potential safety hazards were reviewed, and environmental compliance procedures were outlined.

Halliburton maintains a continuous quality improvement process and appreciates any comments or suggestions that you may have. Halliburton again thanks you for the opportunity to perform service work on this well. We hope to be your solutions provider for future projects.

Respectfully,

Halliburton [Brighton]

Job Times

	Date	Time	Time Zone
Requested Time On Location	4/4		MST
Called Out	4/4		
On Location	4/4		
Job Started	4/4	1412	
Job Completed	4/4	1520	
Departed Location	4/4	1630	

1.2 Cementing Job Summary

HALLIBURTON

Cementing Job Summary

The Road to Excellence Starts with Safety

Sold To #: 300466	Ship To #: 3286288	Quote #:	Sales Order #: 0901248479							
Customer: ANADARKO PETROLEUM CORP - EBUS		Customer Rep: RANDY CASE								
Well Name: BERRY FARMS	Well #: 32C-8 HZ	API/UWI #: 05-123-38897-00								
Field: WATTENBERG	City (SAP): PLA	County/Parish: WELD	State: COLORADO							
Legal Description: SE NE-8-3N-67W-1397FNL-300FEL										
Contractor: Randy Case		Rig/Platform Name/Num: Majors 29								
Job BOM: 7521										
Well Type: HORIZONTAL GAS										
Sales Person: HALAMERICA\HX46524		Srv Supervisor: WESLEY WHIPPLE								
Job										
Formation Name										
Formation Depth (MD)	Top	Bottom								
Form Type	BHST									
Job depth MD	817ft	Job Depth TVD								
Water Depth		Wk Ht Above Floor								
Perforation Depth (MD)	From	To								
Well Data										
Description	New / Used	Size in	ID in	Weight lbm/ft	Thread	Grade	Top MD ft	Bottom MD ft	Top TVD ft	Bottom TVD ft
Casing		9.625	8.921	36		J-55	0	1818		
Open Hole Section			13.5				0	1818		
Tools and Accessories										
Type	Size in	Qty	Make	Depth ft	Type	Size in	Qty	Make		
Guide Shoe	9.625	1		1818	Top Plug	9.625	1	HES		
Float Shoe	9.625	1			Bottom Plug	9.625	1	HES		
Float Collar	9.625	1			SSR plug set	9.625	1	HES		
Insert Float	9.625	1			Plug Container	9.625	1	HES		
Stage Tool	9.625	1			Centralizers	9.625	1	HES		
Miscellaneous Materials										
Gelling Agt		Conc		Surfactant		Conc		Acid Type		Qty
Treatment Fld		Conc		Inhibitor		Conc		Sand Type		Size
Fluid Data										
Stage/Plug #: 1										
Fluid #	Stage Type	Fluid Name	Qty	Qty UoM	Mixing Density lbm/gal	Yield ft ³ /sack	Mix Fluid Gal	Rate bbl/min	Total Mix Fluid Gal	
1	Mud Flush III (Powder)	Mud Flush III	12	bbl	8.4					
42 gal/bbl		FRESH WATER								

HALLIBURTON

Cementing Job Summary

Fluid #	Stage Type	Fluid Name	Qty	Qty UoM	Mixing Density lbm/gal	Yield ft3/sack	Mix Fluid Gal	Rate bbl/min	Total Mix Fluid Gal
2	Lead Cement	SWIFTCEM (TM) SYSTEM	323	Sack/Ton	14.2	1.54		5	7.64

1.3 Planned Pumping Schedule

Stage /Plug #	Fluid #	Fluid Type	Fluid Name	Surface Density lbm/gal	Avg Rate bbl/min	Surface Volume	Downhole Volume
1	1	Spacer	Fresh Water	8.33	5.00	10.0 bbl	10.0 bbl
1	2	Spacer	Mud Flush III	8.40	5.00	12.0 bbl	12.0 bbl
1	3	Spacer	Fresh Water	8.33	5.00	10.0 bbl	10.0 bbl
1	4	Cement Slurry	SwiftCem	14.20	5.00	323.0 sacks	310.0 sacks

1.4 Job Overview

		Units	Description
1	Surface temperature at time of job	°F	
2	Mud type (OBM, WBM, SBM, Water, Brine)	-	WBM
3	Actual mud density	lb/gal	
4	Actual mud Plastic Viscosity (PV)	cP	
5	Actual mud Yield Point (YP)	lb _f /100ft ²	
6	Actual mud 30 min Gel Strength	lb _f /100ft ²	
7	Time circulated before job	HH:MM	
8	Mud volume circulated	Bbls	
9	Rate at which well was circulated	Bpm	
10	Pipe movement during hole circulation	Y/N	N
11	Rig pressure while circulating	Psi	
12	Time from end mud circulation to start of job	HH:MM	
13	Pipe movement during cementing	Y/N	N
14	Calculated displacement	Bbls	59
15	Job displaced by	Rig/HES	HES
16	Annular flow before job	Y/N	N
17	Annular flow after job	Y/N	N
18	Length of rat hole	Ft	
19	Units of gas detected while circulating	Units	
20	Was lost circulation experienced at any time?	Y/N	N

1.5

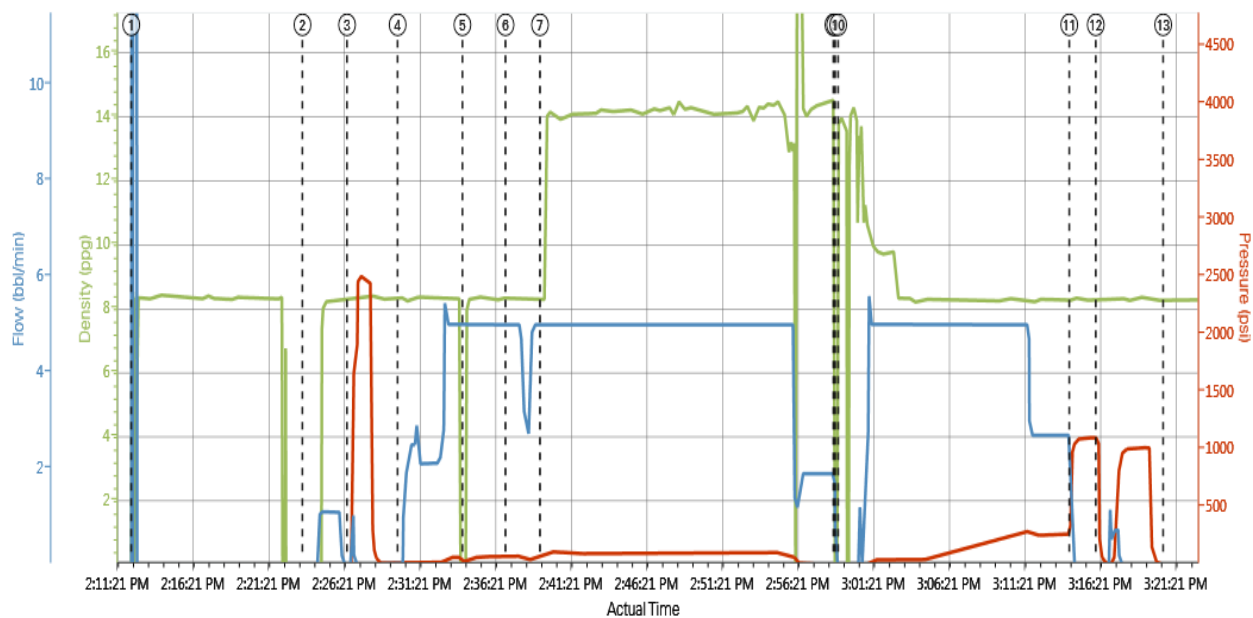


Sold To #: 300466	Ship To #: 3368087	Quote #:	Sales Order #: 0901248479
Customer: ANADARKO PETROLEUM CORP - EBUS		Customer Rep: Case, Randy	
Well Name: Berry Farms	Well #: 32C-8 HZ	API/UWI #: 05-123-38897-00	
Field: Wattenberg	City (SAP): Mead	County/Parish: Weld	State: Colorado
Lat:		Long:	
Contractor: Majors	Rig/Platform Name/Num: Majors 29		
Job Purpose: Cement Surface Casing		Ticket Amount:	
Well Type: Development Well	Job Type: Cement Surface Casing		
Sales Person: GREGORY, JON	Srvs Supervisor: WHIPPLE, WESLEY	MBU ID Emp #: 300487	

[illegible]

SUMMIT Version: 7.3.0127

ANADARKO BERRY FARMS 32C-8 HZ 901248479



DH Density (ppg) PS Pump Press (psi) PS Pump Rate (bbl/min)

① Test Lines 0,0,0	④ Pump Spacer 1 8.36;4,0	⑦ Pump Lead Cement 8.29;76;5	⑩ Pump Displacement 13.99;-4,0	⑬ End Job 8.28;2,0
② Start Job -12.07;3,0	⑤ Pump Spacer 2 -9.03;21;5	⑧ Shutdown -6.16;2,0	⑪ Bump Plug 8.27;972;0	
③ Test Lines 8.36;6;0	⑥ Pump Spacer 1 8.36;76;5	⑨ Drop Top Plug 13.25;-1;0	⑫ Other 8.3;1051;0	

