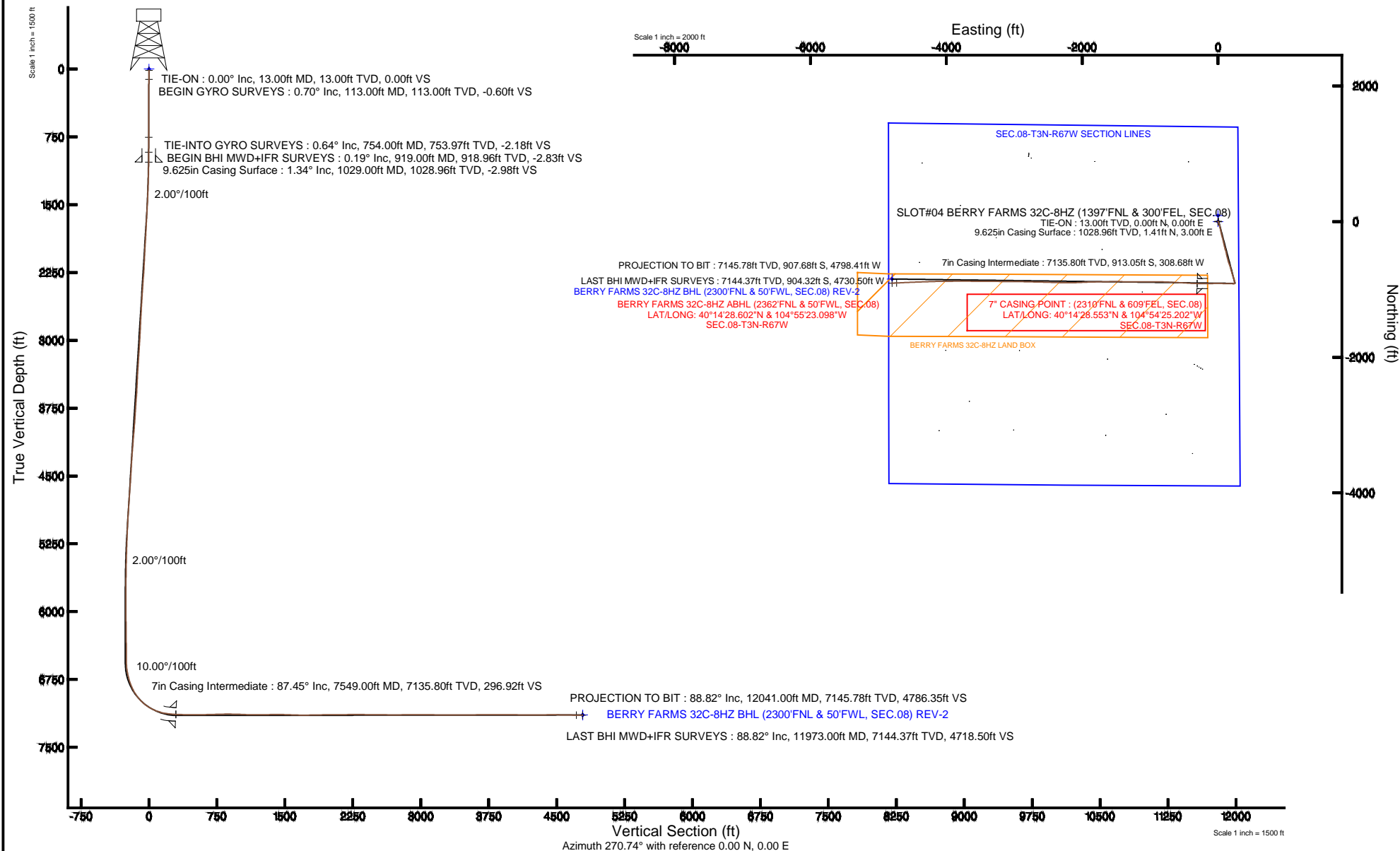


Location:	COLORADO	Slot:	SLOT#04 BERRY FARMS 32C-8HZ (1397'FNL & 300'FEL, SEC.08)
Field:	WELD COUNTY (KERR MCGEE)	Well:	BERRY FARMS 32C-8HZ
Facility:	SEC.08-T3N-R67W	Wellbore:	BERRY FARMS 32C-8HZ PWB

Plot reference wellpath is BERRY FARMS 32C-8HZ (REV-A.0) PWP	
True vertical depths are referenced to ENSIGN 145 (13KB) (RKB)	Grid System: NAD83 / Lambert Colorado SP, Northern Zone (501), US feet
Measured depths are referenced to ENSIGN 145 (13KB) (RKB)	North Reference: True north
ENSIGN 145 (13KB) (RKB) to Mean Sea Level: 4833 feet	Scale: True distance
Mean Sea Level to Mud line (At Slot: SLOT#04 BERRY FARMS 32C-8HZ (1397FNL & 300FEL, SEC.08)): 0 feet	Depths are in feet
Coordinates are in feet referenced to Slot	Created by: inojiamr on 7/8/2014



Actual Wellpath Report

BERRY FARMS 32C-8HZ AWP

Page 1 of 8

REFERENCE WELLPATH IDENTIFICATION

Operator	KERR-MCGEE OIL & GAS ONSHORE LP	Slot	SLOT#04 BERRY FARMS 32C-8HZ (1397'FNL & 300'FEL, SEC.08)
Area	COLORADO	Well	BERRY FARMS 32C-8HZ
Field	WELD COUNTY (KERR MCGEE)	Wellbore	BERRY FARMS 32C-8HZ AWB
Facility	SEC.08-T3N-R67W		

REPORT SETUP INFORMATION

Projection System	NAD83 / Lambert Colorado SP, Northern Zone (501), US feet	Software System	WellArchitect® 4.0.0
North Reference	True	User	Ingmjmr
Scale	0.999957	Report Generated	7/8/2014 at 10:34:02 AM
Convergence at slot	n/a	Database/Source file	Anadarko Local/BERRY_FARMS_32C-8HZ_AWB.xml

WELLPATH LOCATION

	Local coordinates		Grid coordinates		Geographic coordinates	
	North[ft]	East[ft]	Easting[US ft]	Northing[US ft]	Latitude	Longitude
Slot Location	-89.96	0.08	3165844.46	1332203.16	40°14'37.576"N	104°54'21.222"W
Facility Reference Pt			3165843.78	1332293.12	40°14'38.465"N	104°54'21.223"W
Field Reference Pt			3197771.84	1268891.29	40°04'09.600"N	104°47'36.000"W

WELLPATH DATUM

Calculation method	Minimum curvature	ENSIGN 145 (13'KB) (RKB) to Facility Vertical Datum	4833.00ft
Horizontal Reference Pt	Slot	ENSIGN 145 (13'KB) (RKB) to Mean Sea Level	4833.00ft
Vertical Reference Pt	ENSIGN 145 (13'KB) (RKB)	ENSIGN 145 (13'KB) (RKB) to Mud Line at Slot (SLOT#04 BERRY FARMS 32C-8HZ (1397'FNL & 300'FEL, SEC.08))	4833.00ft
MD Reference Pt	ENSIGN 145 (13'KB) (RKB)	Section Origin	N 0.00, E 0.00 ft
Field Vertical Reference	Mean Sea Level	Section Azimuth	270.74°

REFERENCE WELLPATH IDENTIFICATION

Operator	KERR-MCGEE OIL & GAS ONSHORE LP	Slot	SLOT#04 BERRY FARMS 32C-8HZ (1397'FNL & 300'FEL, SEC.08)
Area	COLORADO	Well	BERRY FARMS 32C-8HZ
Field	WELD COUNTY (KERR MCGEE)	Wellbore	BERRY FARMS 32C-8HZ AWP
Facility	SEC.08-T3N-R67W		

WELLPATH DATA (142 stations) † = interpolated/extrapolated station

MD [ft]	Inclination [°]	Azimuth [°]	TVD [ft]	Vert Sect [ft]	North [ft]	East [ft]	Latitude	Longitude	DLS [°/100ft]	Comments
0.00†	0.000	100.690	0.00	0.00	0.00	0.00	40°14'37.576"N	104°54'21.222"W	0.00	
13.00	0.000	100.690	13.00	0.00	0.00	0.00	40°14'37.576"N	104°54'21.222"W	0.00	TIE-ON
113.00	0.700	100.690	113.00	-0.60	-0.11	0.60	40°14'37.575"N	104°54'21.214"W	0.70	BEGIN GYRO SURVEYS
213.00	0.620	65.380	212.99	-1.69	0.00	1.69	40°14'37.576"N	104°54'21.200"W	0.41	
313.00	0.710	15.130	312.99	-2.34	0.82	2.35	40°14'37.584"N	104°54'21.192"W	0.57	
413.00	0.730	351.980	412.98	-2.39	2.05	2.42	40°14'37.596"N	104°54'21.191"W	0.29	
513.00	0.440	279.740	512.97	-1.92	2.75	1.95	40°14'37.603"N	104°54'21.197"W	0.73	
613.00	0.450	191.830	612.97	-1.46	2.43	1.49	40°14'37.600"N	104°54'21.203"W	0.62	
713.00	0.470	99.720	712.97	-1.79	1.97	1.82	40°14'37.596"N	104°54'21.199"W	0.66	
754.00	0.640	73.360	753.97	-2.18	2.01	2.20	40°14'37.596"N	104°54'21.194"W	0.74	TIE-INTO GYRO SURVEYS
919.00	0.190	305.190	918.96	-2.83	2.43	2.86	40°14'37.600"N	104°54'21.185"W	0.47	BEGIN BHI MWD+IFR SURVEYS
1012.00	0.980	167.200	1011.96	-2.89	1.75	2.91	40°14'37.593"N	104°54'21.184"W	1.21	
1106.00	2.990	159.630	1105.90	-3.96	-1.34	3.94	40°14'37.563"N	104°54'21.171"W	2.15	
1199.00	5.920	158.990	1198.61	-6.61	-8.09	6.51	40°14'37.496"N	104°54'21.138"W	3.15	
1293.00	6.260	168.200	1292.08	-9.52	-17.63	9.29	40°14'37.402"N	104°54'21.102"W	1.10	
1387.00	8.180	161.510	1385.33	-12.83	-28.99	12.46	40°14'37.290"N	104°54'21.061"W	2.23	
1480.00	9.440	164.330	1477.23	-17.17	-42.61	16.62	40°14'37.155"N	104°54'21.008"W	1.43	
1574.00	10.200	163.380	1569.86	-21.83	-58.01	21.08	40°14'37.003"N	104°54'20.950"W	0.83	
1667.00	11.230	167.150	1661.23	-26.41	-74.73	25.45	40°14'36.838"N	104°54'20.894"W	1.34	
1761.00	12.640	166.620	1753.20	-31.07	-93.66	29.87	40°14'36.650"N	104°54'20.837"W	1.50	
1854.00	13.870	167.770	1843.72	-36.05	-114.45	34.58	40°14'36.445"N	104°54'20.776"W	1.35	
1948.00	13.330	166.600	1935.08	-41.23	-136.00	39.48	40°14'36.232"N	104°54'20.713"W	0.64	
2041.00	12.780	167.300	2025.68	-46.23	-156.47	44.23	40°14'36.030"N	104°54'20.652"W	0.62	
2134.00	12.230	168.090	2116.47	-50.78	-176.14	48.52	40°14'35.835"N	104°54'20.596"W	0.62	
2228.00	12.820	166.090	2208.24	-55.60	-196.01	53.08	40°14'35.639"N	104°54'20.537"W	0.78	
2321.00	12.870	163.060	2298.91	-61.35	-215.93	58.58	40°14'35.442"N	104°54'20.467"W	0.73	
2415.00	14.300	165.420	2390.28	-67.60	-237.18	64.56	40°14'35.232"N	104°54'20.390"W	1.63	
2508.00	14.480	165.870	2480.36	-73.61	-259.57	70.29	40°14'35.011"N	104°54'20.316"W	0.23	
2602.00	14.530	166.550	2571.36	-79.52	-282.44	75.90	40°14'34.785"N	104°54'20.243"W	0.19	
2692.00	13.350	166.990	2658.71	-84.76	-303.54	80.86	40°14'34.576"N	104°54'20.179"W	1.32	

Actual Wellpath Report

BERRY FARMS 32C-8HZ AWP

Page 3 of 8

REFERENCE WELLPATH IDENTIFICATION

Operator	KERR-MCGEE OIL & GAS ONSHORE LP	Slot	SLOT#04 BERRY FARMS 32C-8HZ (1397'FNL & 300'FEL, SEC.08)
Area	COLORADO	Well	BERRY FARMS 32C-8HZ
Field	WELD COUNTY (KERR MCGEE)	Wellbore	BERRY FARMS 32C-8HZ AWP
Facility	SEC.08-T3N-R67W		

WELLPATH DATA (142 stations)

MD [ft]	Inclination [°]	Azimuth [°]	TVD [ft]	Vert Sect [ft]	North [ft]	East [ft]	Latitude	Longitude	DLS [°/100ft]	Comments
2781.00	12.560	167.060	2745.45	-89.48	-322.98	85.34	40°14'34.384"N	104°54'20.121"W	0.89	
2872.00	12.110	168.810	2834.35	-93.80	-341.99	89.41	40°14'34.196"N	104°54'20.069"W	0.64	
2962.00	11.780	166.950	2922.40	-97.94	-360.20	93.32	40°14'34.017"N	104°54'20.019"W	0.56	
3052.00	11.480	162.270	3010.55	-102.96	-377.68	98.12	40°14'33.844"N	104°54'19.957"W	1.10	
3142.00	12.220	166.300	3098.63	-108.17	-395.47	103.10	40°14'33.668"N	104°54'19.892"W	1.23	
3232.00	13.410	162.750	3186.39	-113.77	-414.69	108.45	40°14'33.478"N	104°54'19.823"W	1.58	
3322.00	12.440	165.020	3274.11	-119.62	-434.02	114.05	40°14'33.287"N	104°54'19.751"W	1.22	
3412.00	13.300	166.630	3361.85	-124.77	-453.46	118.95	40°14'33.095"N	104°54'19.688"W	1.04	
3502.00	13.420	170.730	3449.42	-129.11	-473.84	123.03	40°14'32.894"N	104°54'19.635"W	1.06	
3592.00	13.240	166.540	3536.99	-133.45	-494.17	127.11	40°14'32.693"N	104°54'19.583"W	1.09	
3682.00	14.550	165.480	3624.36	-138.95	-515.14	132.35	40°14'32.485"N	104°54'19.515"W	1.48	
3772.00	14.500	164.780	3711.48	-145.02	-536.95	138.14	40°14'32.270"N	104°54'19.441"W	0.20	
3862.00	14.730	165.390	3798.57	-151.15	-558.90	143.98	40°14'32.053"N	104°54'19.365"W	0.31	
3952.00	13.410	165.930	3885.87	-156.84	-580.09	149.41	40°14'31.844"N	104°54'19.295"W	1.47	
4042.00	12.690	159.250	3973.55	-163.13	-599.46	155.45	40°14'31.652"N	104°54'19.217"W	1.86	
4132.00	13.330	160.520	4061.24	-170.34	-618.49	162.41	40°14'31.464"N	104°54'19.128"W	0.78	
4222.00	12.100	159.450	4149.03	-177.35	-637.10	169.18	40°14'31.280"N	104°54'19.040"W	1.39	
4312.00	12.750	160.240	4236.92	-184.25	-655.28	175.85	40°14'31.101"N	104°54'18.954"W	0.75	
4402.00	13.340	163.850	4324.60	-190.74	-674.60	182.09	40°14'30.910"N	104°54'18.874"W	1.12	
4492.00	12.330	167.130	4412.35	-196.02	-693.94	187.12	40°14'30.719"N	104°54'18.809"W	1.38	
4582.00	13.050	164.430	4500.15	-201.13	-713.10	191.99	40°14'30.529"N	104°54'18.746"W	1.04	
4672.00	12.770	164.310	4587.88	-206.80	-732.46	197.41	40°14'30.338"N	104°54'18.676"W	0.31	
4762.00	13.470	163.060	4675.53	-212.80	-752.07	203.15	40°14'30.144"N	104°54'18.602"W	0.84	
4852.00	12.890	162.960	4763.16	-219.04	-771.69	209.15	40°14'29.950"N	104°54'18.525"W	0.64	
4942.00	11.470	162.330	4851.13	-224.93	-789.82	214.81	40°14'29.771"N	104°54'18.452"W	1.58	
5032.00	10.440	162.380	4939.49	-230.33	-806.12	219.99	40°14'29.610"N	104°54'18.385"W	1.14	
5122.00	9.680	162.660	5028.10	-235.24	-821.11	224.71	40°14'29.462"N	104°54'18.324"W	0.85	
5212.00	8.530	163.650	5116.97	-239.55	-834.74	228.85	40°14'29.327"N	104°54'18.271"W	1.29	
5302.00	7.710	164.500	5206.06	-243.20	-846.96	232.34	40°14'29.206"N	104°54'18.226"W	0.92	
5392.00	6.580	164.680	5295.36	-246.31	-857.75	235.32	40°14'29.100"N	104°54'18.188"W	1.26	

REFERENCE WELLPATH IDENTIFICATION

Operator	KERR-MCGEE OIL & GAS ONSHORE LP	Slot	SLOT#04 BERRY FARMS 32C-8HZ (1397'FNL & 300'FEL, SEC.08)
Area	COLORADO	Well	BERRY FARMS 32C-8HZ
Field	WELD COUNTY (KERR MCGEE)	Wellbore	BERRY FARMS 32C-8HZ AWP
Facility	SEC.08-T3N-R67W		

WELLPATH DATA (142 stations)

MD [ft]	Inclination [°]	Azimuth [°]	TVD [ft]	Vert Sect [ft]	North [ft]	East [ft]	Latitude	Longitude	DLS [°/100ft]	Comments
5482.00	4.970	163.370	5384.90	-248.90	-866.46	237.79	40°14'29.014"N	104°54'18.156"W	1.79	
5572.00	5.420	170.080	5474.54	-250.85	-874.39	239.64	40°14'28.935"N	104°54'18.132"W	0.84	
5662.00	4.660	169.680	5564.19	-252.34	-882.17	241.03	40°14'28.858"N	104°54'18.114"W	0.85	
5752.00	3.860	172.370	5653.94	-253.48	-888.77	242.09	40°14'28.793"N	104°54'18.100"W	0.92	
5841.00	3.130	177.140	5742.77	-254.07	-894.17	242.61	40°14'28.740"N	104°54'18.094"W	0.88	
6021.00	2.190	182.100	5922.58	-254.30	-902.51	242.73	40°14'28.657"N	104°54'18.092"W	0.54	
6201.00	1.610	203.880	6102.48	-253.22	-908.26	241.58	40°14'28.601"N	104°54'18.107"W	0.51	
6381.00	1.100	215.310	6282.43	-251.25	-911.98	239.55	40°14'28.564"N	104°54'18.133"W	0.32	
6471.00	0.840	211.190	6372.41	-250.42	-913.25	238.71	40°14'28.551"N	104°54'18.144"W	0.30	
6587.00	0.560	198.860	6488.41	-249.82	-914.51	238.09	40°14'28.539"N	104°54'18.152"W	0.27	
6651.00	1.020	239.450	6552.40	-249.23	-915.10	237.50	40°14'28.533"N	104°54'18.159"W	1.09	
6696.00	4.320	264.980	6597.35	-247.20	-915.45	235.46	40°14'28.530"N	104°54'18.186"W	7.62	
6741.00	7.560	269.470	6642.10	-242.56	-915.63	230.81	40°14'28.528"N	104°54'18.246"W	7.27	
6786.00	11.030	273.210	6686.50	-235.29	-915.41	223.55	40°14'28.530"N	104°54'18.339"W	7.82	
6831.00	14.560	272.310	6730.38	-225.33	-914.95	213.60	40°14'28.535"N	104°54'18.468"W	7.86	
6876.00	18.420	272.170	6773.52	-212.57	-914.45	200.84	40°14'28.540"N	104°54'18.632"W	8.58	
6921.00	22.060	270.940	6815.73	-197.01	-914.04	185.28	40°14'28.544"N	104°54'18.833"W	8.14	
6966.00	26.010	270.230	6856.82	-178.68	-913.86	166.96	40°14'28.545"N	104°54'19.069"W	8.80	
7011.00	30.820	271.270	6896.39	-157.27	-913.57	145.55	40°14'28.548"N	104°54'19.345"W	10.74	
7056.00	36.300	271.180	6933.87	-132.41	-913.04	120.69	40°14'28.553"N	104°54'19.666"W	12.18	
7101.00	41.040	270.740	6969.00	-104.30	-912.57	92.59	40°14'28.558"N	104°54'20.028"W	10.55	
7146.00	47.060	271.140	7001.33	-73.03	-912.05	61.32	40°14'28.563"N	104°54'20.431"W	13.39	
7191.00	52.380	271.530	7030.41	-38.71	-911.25	27.01	40°14'28.571"N	104°54'20.874"W	11.84	
7236.00	58.280	269.770	7056.00	-1.72	-910.85	-9.98	40°14'28.575"N	104°54'21.351"W	13.50	
7281.00	63.580	268.440	7077.86	37.58	-911.47	-49.29	40°14'28.569"N	104°54'21.858"W	12.06	
7326.00	68.890	268.230	7095.98	78.71	-912.67	-90.44	40°14'28.557"N	104°54'22.388"W	11.81	
7371.00	73.400	269.690	7110.52	121.27	-913.44	-133.01	40°14'28.549"N	104°54'22.937"W	10.48	
7416.00	78.020	270.020	7121.63	164.86	-913.55	-176.61	40°14'28.548"N	104°54'23.499"W	10.29	
7461.00	82.770	269.600	7129.13	209.21	-913.69	-220.96	40°14'28.547"N	104°54'24.071"W	10.60	
7500.00	85.930	269.960	7132.97	248.01	-913.84	-259.77	40°14'28.545"N	104°54'24.572"W	8.15	

Actual Wellpath Report

BERRY FARMS 32C-8HZ AWP

Page 5 of 8

REFERENCE WELLPATH IDENTIFICATION

Operator	KERR-MCGEE OIL & GAS ONSHORE LP	Slot	SLOT#04 BERRY FARMS 32C-8HZ (1397'FNL & 300'FEL, SEC.08)
Area	COLORADO	Well	BERRY FARMS 32C-8HZ
Field	WELD COUNTY (KERR MCGEE)	Wellbore	BERRY FARMS 32C-8HZ AWB
Facility	SEC.08-T3N-R67W		

WELLPATH DATA (142 stations) † = interpolated/extrapolated station

MD [ft]	Inclination [°]	Azimuth [°]	TVD [ft]	Vert Sect [ft]	North [ft]	East [ft]	Latitude	Longitude	DLS [°/100ft]	Comments
7549.00†	87.453	271.891	7135.80	296.92	-913.05	-308.68	40°14'28.553"N	104°54'25.202"W	5.01	7" CASING POINT
7581.00	88.450	273.150	7136.94	328.88	-911.65	-340.62	40°14'28.567"N	104°54'25.614"W	5.01	
7658.00	88.490	273.150	7139.00	405.79	-907.42	-417.48	40°14'28.609"N	104°54'26.605"W	0.05	
7748.00	90.360	273.250	7139.90	495.70	-902.39	-507.33	40°14'28.659"N	104°54'27.764"W	2.08	
7838.00	90.670	272.860	7139.09	585.62	-897.60	-597.20	40°14'28.706"N	104°54'28.923"W	0.55	
7928.00	91.600	272.510	7137.31	675.55	-893.38	-687.08	40°14'28.748"N	104°54'30.082"W	1.10	
8018.00	91.720	272.240	7134.71	765.47	-889.65	-776.97	40°14'28.784"N	104°54'31.241"W	0.33	
8108.00	90.340	270.850	7133.09	855.45	-887.23	-866.91	40°14'28.808"N	104°54'32.401"W	2.18	
8198.00	88.760	270.120	7133.79	945.44	-886.47	-956.90	40°14'28.816"N	104°54'33.561"W	1.93	
8288.00	87.530	269.250	7136.71	1035.37	-886.96	-1046.85	40°14'28.811"N	104°54'34.721"W	1.67	
8378.00	88.920	269.270	7139.49	1125.30	-888.12	-1136.80	40°14'28.799"N	104°54'35.881"W	1.54	
8468.00	90.330	270.600	7140.08	1215.28	-888.22	-1226.79	40°14'28.798"N	104°54'37.042"W	2.15	
8558.00	91.350	270.830	7138.76	1305.27	-887.10	-1316.78	40°14'28.809"N	104°54'38.202"W	1.16	
8648.00	90.860	271.210	7137.03	1395.25	-885.50	-1406.75	40°14'28.825"N	104°54'39.362"W	0.69	
8738.00	87.900	270.170	7138.00	1485.24	-884.41	-1496.72	40°14'28.836"N	104°54'40.522"W	3.49	
8828.00	88.060	268.950	7141.18	1575.16	-885.11	-1586.66	40°14'28.829"N	104°54'41.682"W	1.37	
8918.00	88.890	269.250	7143.57	1665.09	-886.52	-1676.62	40°14'28.815"N	104°54'42.842"W	0.98	
9008.00	91.160	268.880	7143.53	1755.05	-887.99	-1766.60	40°14'28.800"N	104°54'44.003"W	2.56	
9098.00	91.010	268.560	7141.83	1844.98	-890.00	-1856.56	40°14'28.780"N	104°54'45.163"W	0.39	
9188.00	90.860	267.900	7140.36	1934.88	-892.78	-1946.51	40°14'28.753"N	104°54'46.322"W	0.75	
9278.00	90.240	267.230	7139.49	2024.73	-896.60	-2036.42	40°14'28.715"N	104°54'47.482"W	1.01	
9368.00	90.460	268.850	7138.94	2114.63	-899.68	-2126.36	40°14'28.685"N	104°54'48.642"W	1.82	
9458.00	90.640	269.890	7138.08	2204.60	-900.67	-2216.35	40°14'28.675"N	104°54'49.802"W	1.17	
9548.00	89.750	271.420	7137.77	2294.59	-899.64	-2306.34	40°14'28.685"N	104°54'50.963"W	1.97	
9638.00	89.530	271.670	7138.34	2384.58	-897.21	-2396.31	40°14'28.709"N	104°54'52.123"W	0.37	
9728.00	89.470	271.730	7139.13	2474.57	-894.54	-2486.26	40°14'28.735"N	104°54'53.283"W	0.09	
9818.00	89.380	271.430	7140.03	2564.55	-892.06	-2576.22	40°14'28.759"N	104°54'54.443"W	0.35	
9908.00	89.220	271.150	7141.13	2654.54	-890.04	-2666.19	40°14'28.779"N	104°54'55.603"W	0.36	
9998.00	90.550	271.270	7141.31	2744.54	-888.13	-2756.17	40°14'28.798"N	104°54'56.763"W	1.48	
10088.00	90.640	271.670	7140.37	2834.52	-885.83	-2846.14	40°14'28.821"N	104°54'57.923"W	0.46	

Actual Wellpath Report

BERRY FARMS 32C-8HZ AWP

Page 6 of 8

REFERENCE WELLPATH IDENTIFICATION

Operator	KERR-MCGEE OIL & GAS ONSHORE LP	Slot	SLOT#04 BERRY FARMS 32C-8HZ (1397'FNL & 300'FEL, SEC.08)
Area	COLORADO	Well	BERRY FARMS 32C-8HZ
Field	WELD COUNTY (KERR MCGEE)	Wellbore	BERRY FARMS 32C-8HZ AWP
Facility	SEC.08-T3N-R67W		

WELLPATH DATA (142 stations)

MD [ft]	Inclination [°]	Azimuth [°]	TVD [ft]	Vert Sect [ft]	North [ft]	East [ft]	Latitude	Longitude	DLS [°/100ft]	Comments
10178.00	90.120	271.100	7139.78	2924.52	-883.65	-2936.11	40°14'28.842"N	104°54'59.084"W	0.86	
10268.00	89.720	270.260	7139.90	3014.51	-882.58	-3026.10	40°14'28.853"N	104°55'00.244"W	1.03	
10358.00	89.630	270.040	7140.41	3104.51	-882.35	-3116.10	40°14'28.855"N	104°55'01.405"W	0.26	
10448.00	89.440	270.260	7141.14	3194.50	-882.11	-3206.10	40°14'28.857"N	104°55'02.565"W	0.32	
10538.00	89.530	269.980	7141.95	3284.49	-881.92	-3296.09	40°14'28.859"N	104°55'03.726"W	0.33	
10628.00	89.530	270.290	7142.69	3374.48	-881.71	-3386.09	40°14'28.861"N	104°55'04.886"W	0.34	
10718.00	90.860	271.030	7142.38	3464.48	-880.67	-3476.08	40°14'28.871"N	104°55'06.047"W	1.69	
10808.00	90.520	270.620	7141.30	3554.47	-879.38	-3566.06	40°14'28.884"N	104°55'07.207"W	0.59	
10898.00	90.520	270.340	7140.48	3644.47	-878.62	-3656.06	40°14'28.891"N	104°55'08.367"W	0.31	
10988.00	90.460	270.240	7139.71	3734.46	-878.17	-3746.05	40°14'28.895"N	104°55'09.528"W	0.13	
11078.00	90.550	269.590	7138.92	3824.45	-878.30	-3836.05	40°14'28.894"N	104°55'10.688"W	0.73	
11168.00	89.660	269.700	7138.76	3914.43	-878.86	-3926.05	40°14'28.888"N	104°55'11.849"W	1.00	
11258.00	89.160	269.410	7139.68	4004.41	-879.56	-4016.04	40°14'28.881"N	104°55'13.009"W	0.64	
11348.00	88.880	268.990	7141.22	4094.36	-880.82	-4106.02	40°14'28.868"N	104°55'14.170"W	0.56	
11438.00	89.780	267.900	7142.27	4184.28	-883.26	-4195.97	40°14'28.844"N	104°55'15.330"W	1.57	
11528.00	90.640	268.260	7141.94	4274.18	-886.27	-4285.92	40°14'28.814"N	104°55'16.490"W	1.04	
11618.00	90.520	268.140	7141.03	4364.09	-889.10	-4375.87	40°14'28.786"N	104°55'17.650"W	0.19	
11708.00	90.120	268.000	7140.53	4453.99	-892.13	-4465.82	40°14'28.756"N	104°55'18.809"W	0.47	
11798.00	89.100	267.450	7141.14	4543.86	-895.70	-4555.75	40°14'28.721"N	104°55'19.969"W	1.29	
11888.00	88.920	267.040	7142.70	4633.68	-900.03	-4645.63	40°14'28.678"N	104°55'21.128"W	0.50	
11973.00	88.820	267.170	7144.37	4718.50	-904.32	-4730.50	40°14'28.635"N	104°55'22.222"W	0.19	LAST BHI MWD+IFR SURVEYS
12041.00	88.820	267.170	7145.78	4786.35	-907.68	-4798.41	40°14'28.602"N	104°55'23.098"W	0.00	PROJECTION TO BIT

Actual Wellpath Report

BERRY FARMS 32C-8HZ AWP

Page 7 of 8

REFERENCE WELLPATH IDENTIFICATION

Operator	KERR-MCGEE OIL & GAS ONSHORE LP	Slot	SLOT#04 BERRY FARMS 32C-8HZ (1397'FNL & 300'FEL, SEC.08)
Area	COLORADO	Well	BERRY FARMS 32C-8HZ
Field	WELD COUNTY (KERR MCGEE)	Wellbore	BERRY FARMS 32C-8HZ AWB
Facility	SEC.08-T3N-R67W		

HOLE & CASING SECTIONS - Ref Wellbore: BERRY FARMS 32C-8HZ AWB Ref Wellpath: BERRY FARMS 32C-8HZ AWP

String/Diameter	Start MD [ft]	End MD [ft]	Interval [ft]	Start TVD [ft]	End TVD [ft]	Start N/S [ft]	Start E/W [ft]	End N/S [ft]	End E/W [ft]
13.5in Open Hole	13.00	1029.00	1016.00	13.00	1028.96	0.00	0.00	1.41	3.00
9.625in Casing Surface	13.00	1029.00	1016.00	13.00	1028.96	0.00	0.00	1.41	3.00
8.75in Open Hole	1029.00	7558.00	6529.00	1028.96	7136.18	1.41	3.00	-912.73	-317.66
7in Casing Intermediate	13.00	7549.00	7536.00	13.00	7135.80	0.00	0.00	-913.05	-308.68
6in Open Hole	7558.00	12041.00	4483.00	7136.18	7145.78	-912.73	-317.66	-907.68	-4798.41

TARGETS

Name	MD [ft]	TVD [ft]	North [ft]	East [ft]	Grid East [US ft]	Grid North [US ft]	Latitude	Longitude	Shape
SEC.08-T3N-R67W SECTION LINES		0.00	89.96	0.00	3165843.86	1332293.12	40°14'38.465"N	104°54'21.222"W	polygon
BERRY FARMS 32C-8HZ BHL (2300'FNL & 50'FWL, SEC.08) REV-2		7143.00	-845.71	-4798.44	3161052.01	1331325.36	40°14'29.214"N	104°55'23.099"W	point
BERRY FARMS 32C-8HZ BHL ON PLAT (2275'FNL & 50'FWL, SEC.08) REV-1		7143.00	-820.71	-4798.44	3161051.84	1331350.36	40°14'29.461"N	104°55'23.099"W	point
BERRY FARMS 32C-8HZ LAND BOX		7143.00	0.00	0.00	3165844.46	1332203.16	40°14'37.576"N	104°54'21.222"W	polygon

WELLPATH COMPOSITION - Ref Wellbore: BERRY FARMS 32C-8HZ AWB Ref Wellpath: BERRY FARMS 32C-8HZ AWP

Start MD [ft]	End MD [ft]	Positional Uncertainty Model	Log Name/Comment	Wellbore
13.00	754.00	Generic gyro - continuous (Standard)	MS ENERGY SERVICES GYRO SURVEYS <113-754>	BERRY FARMS 32C-8HZ AWB
754.00	7500.00	NaviTrak (IFR)	BHI MWD+IFR SURVEYS 8 3/4" HOLE <919-7500>	BERRY FARMS 32C-8HZ AWB
7500.00	11973.00	NaviTrak (IFR)	BHI MWD+IFR 6 1/8" HOLE <7581-11973>	BERRY FARMS 32C-8HZ AWB
11973.00	12041.00	Blind Drilling (std)	Projection to bit	BERRY FARMS 32C-8HZ AWB

Actual Wellpath Report

BERRY FARMS 32C-8HZ AWP

Page 8 of 8

REFERENCE WELLPATH IDENTIFICATION

Operator	KERR-MCGEE OIL & GAS ONSHORE LP	Slot	SLOT#04 BERRY FARMS 32C-8HZ (1397'FNL & 300'FEL, SEC.08)
Area	COLORADO	Well	BERRY FARMS 32C-8HZ
Field	WELD COUNTY (KERR MCGEE)	Wellbore	BERRY FARMS 32C-8HZ AWB
Facility	SEC.08-T3N-R67W		

WELLPATH COMMENTS

MD [ft]	Inclination [°]	Azimuth [°]	TVD [ft]	Comment
13.00	0.000	100.690	13.00	TIE-ON
113.00	0.700	100.690	113.00	BEGIN GYRO SURVEYS
754.00	0.640	73.360	753.97	TIE-INTO GYRO SURVEYS
919.00	0.190	305.190	918.96	BEGIN BHI MWD+IFR SURVEYS
7549.00	87.453	271.891	7135.80	7" CASING POINT
11973.00	88.820	267.170	7144.37	LAST BHI MWD+IFR SURVEYS
12041.00	88.820	267.170	7145.78	PROJECTION TO BIT