



Scale: 5" / 100'
Measured Depth Log

Well Name Berry Farms 32C-8HZ

Location SEC 8 T3N R67W

State COLORADO

County WELD

Country UNITED STATES OF AMERICA

Rig Number ENSIGN 145

API Number 051233889700

AFE # 2091188

Region DJ BASIN

Field WATTENBERG

Spud Date 5/14/2014

Drilling Completed 5/20/2014

Surface Coordinates 1,397' FNL, 300' FEL

Bottom Hole Coordinates 2,300'FNL, 50' FWL

Ground Elevation 4,821'

K.B. Elevation 4,833'

Logged Interval 7,200' To 12,041'

Total Depth 12,041'

Formation CODELL

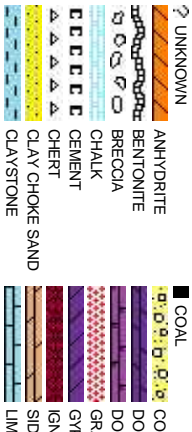
Type of Drilling Fluid FW LSND

Company Anadarko

Address 1099 18TH ST.
Denver, CO 80202

Name LACEY LITTLE, BEN KAT

Company COLUMBINE LOGGING, I
Address 2385 S LIPAN ST.
Denver, CO 80223



Operator

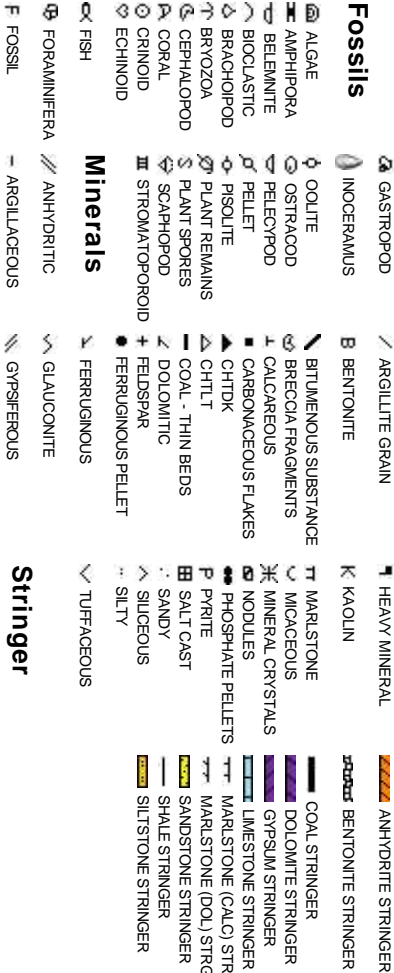
Geologist

KA
NC.

Rock Types



Accessories



Other Symbols



Slide/Rotate

ROP

ROP

MWT: 10.2 IN/OUT 10.2
VIS: 42 IN/OUT 44

MWT: 10.2 IN/OUT 10.2
VIS: 43 IN/OUT 43

Total Gas & Chromatograph

GAS
C1
C2
C3
C4

2547u
C1: 74%
C2: 16%
C3: 8%
C4: 2%
Logger Top Niobrara C Chalk
MD 7,107' / TVD 6,973'

2843u
GAS (mls)
C1-C4 (ppm)

2737u

Depth Labels

% Lith

Curves

GAMMA

BIT 8.75
SMITH SD611
6 X 18 JETS
DEPTH IN: 6,982'

MD: 7,146
TVD: 7,001.33
Inclination: 47.06
Azimuth: 271.14

MD: 7,191
TVD: 7,030.41
Inclination: 52.38
Azimuth: 271.53

MD: 7,236
TVD: 7,056
Inclination: 58.28
Azimuth: 269.77

MD: 7,281
TVD: 7,077.86
Inclination: 63.5
Azimuth: 268.44

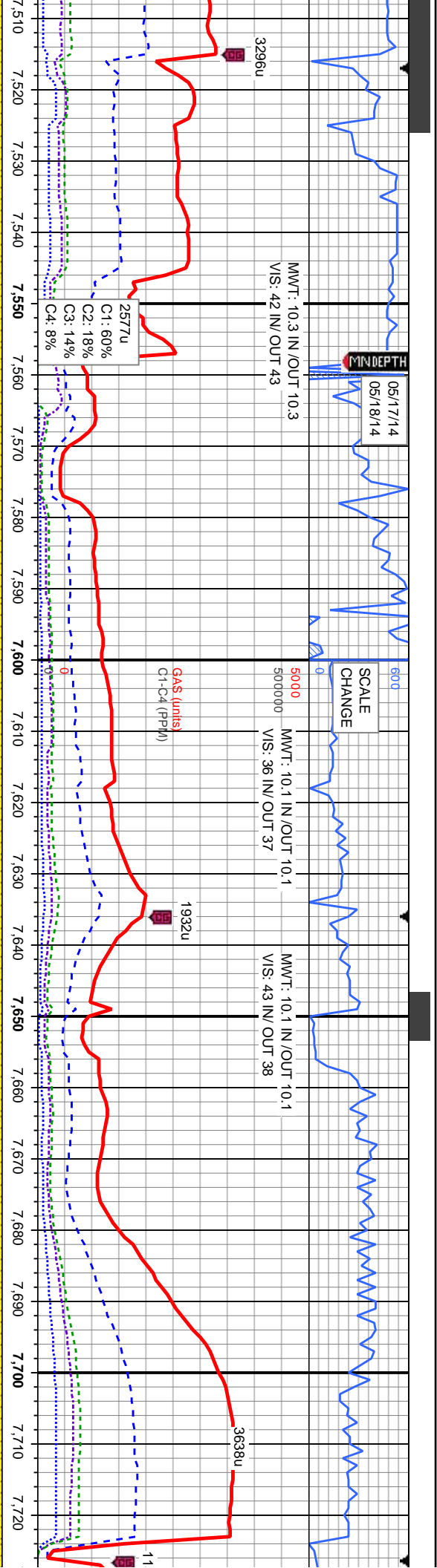
Well Bore
TVD

Oil Show

E
M
FR
TR
SL

Images





BIT 6.125 ULTRERA U513S 5 X 18 JETS DEPTH IN: 7,558'	MD: 7,558 TVD: 7,135.33 Inclination: 89.41 Azimuth: 269.96	MD: 7,581 TVD: 7,136.94 Inclination: 88.45 Azimuth: 273.15	TVD (ft)	MD: 7,658 TVD: 7,139 Inclination: 88.49 Azimuth: 273.15
---	---	---	----------	--

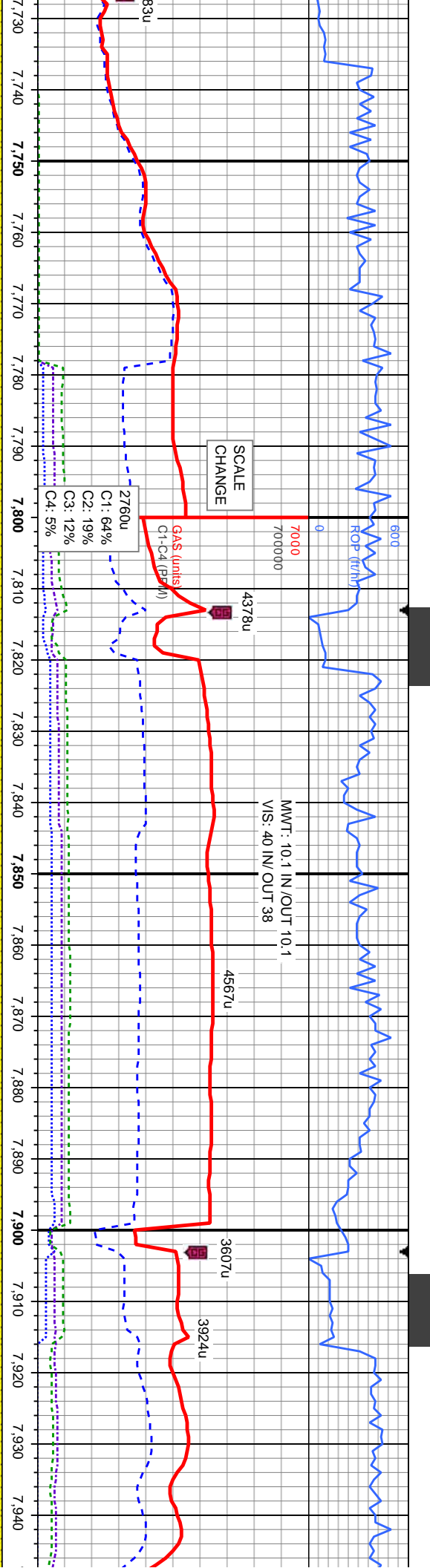
SS: lt - med brn/gy, sb blk - blk, frm, brit, f
srt, sb rnd - sb ang, non calc, tr silty sh; O SHW: calc, tr silty sh, abnt cm; O SHW: thk mod
d bl/wh cut, fast thk bl/wh string, mod str, mod o

100% SS: lt - med brn/gy, sb blk - blk, frm, brit, f grn, p srt, sb rnd - sb ang, non
calc, tr silty sh, abnt cm; O SHW: thk mod bl/wh cut, fast thk bl/wh string, mod str, fr o

100% SS: lt - med brn/gy, sb blk - blk, mod - frm, brit, f grn, p srt, sb rnd - sb ang, non calc, tr
silty sh, tr cm; O SHW: thk mod bl/wh cut, fast thk bl/wh string, fr str, fr o

100% SS: lt - med brn/gy, calc, rr silty sh, tr cm; O S





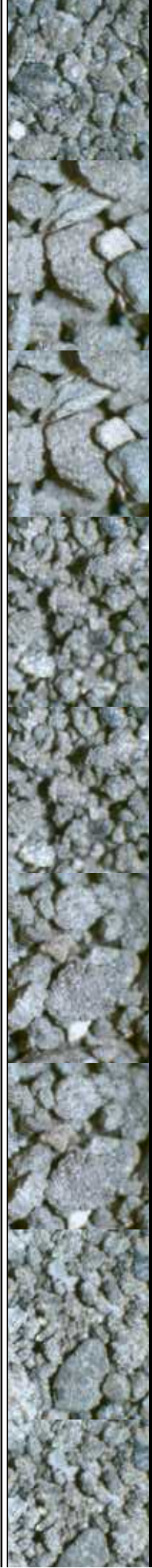
MD: 7,748
TVD: 7,139.9
Inclination: 90.36
Azimuth: 273.25

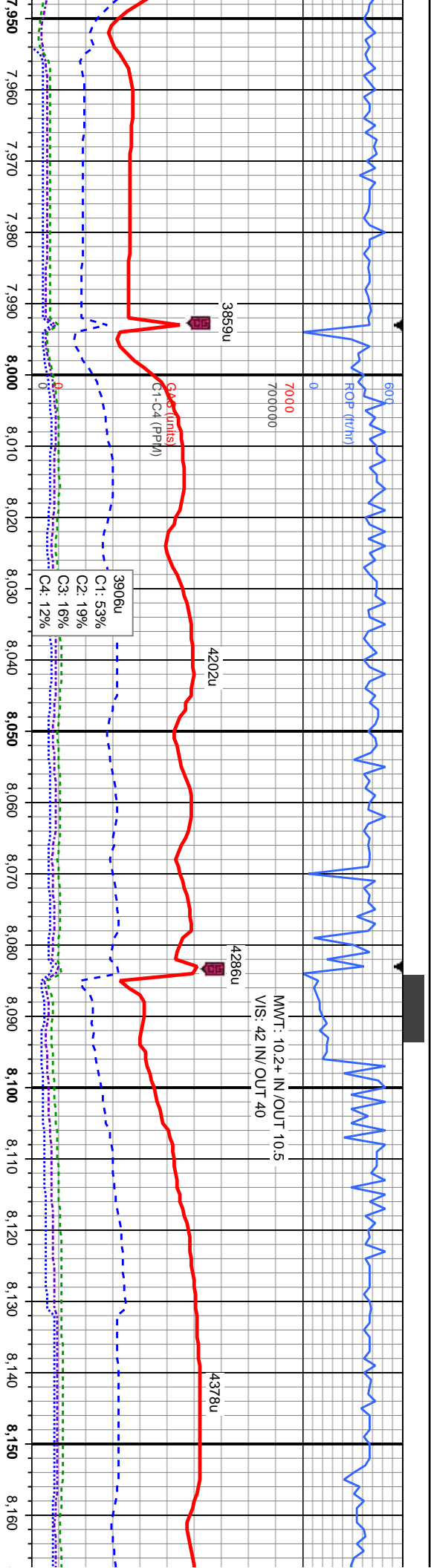
MD: 7,838
TVD: 7,139.09
Inclination: 90.67
Azimuth: 272.86

occ wh ip, mod - frm, brit, sb blkly - blkly, f grn, p srt, sb rnd - sb ang, nor
HW: thk mod bl/wh cut, mod thk bl/wh stmg, fr stn, fr o

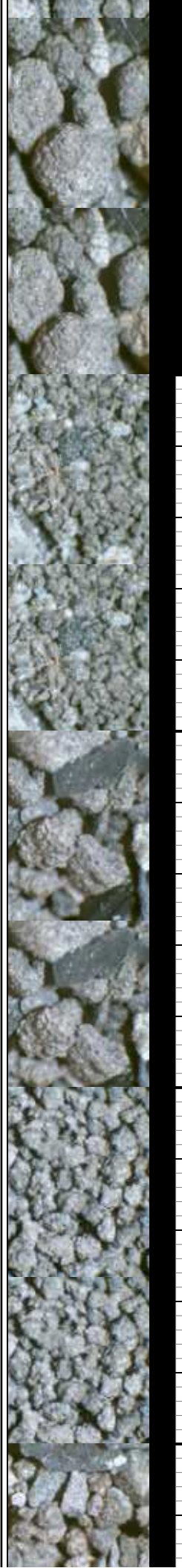
100% SS: lt - med brn/gy, occ wh - frns ip, mod - frm, brit, sb blkly - blkly, f grn, p srt, sb rnd - sb
76 ang, non calc, rr silty sh, tr cnt; O SHW: thk mod bl/wh cut, mod thk bl/wh stmg, fr stn, fr o

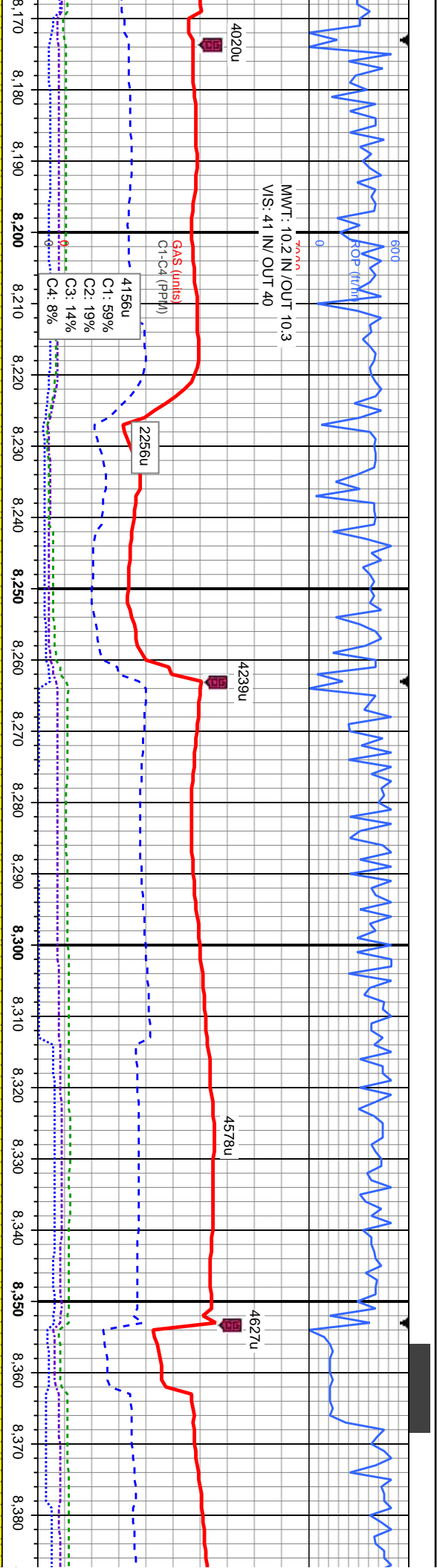
100% SS: lt - med brn/gy, sb blkly - blkly, frm,
O SHW: thk mod bl/wh cut, mod thk bl/wh st





MD: 8.018 TVD: 7,134.7 Inclination: 91.72 Azimuth: 272.24		MD: 8.108 TVD: 7,133.09 Inclination: 90.34 Azimuth: 270.85	
100% SS: lt - med brn/gy, occ wh - trns ip, frm, brit, sb blk - blk, f grn, p srt, sb rnd - sb ang, nor		100% SS: lt - med brn/gy, occ wh - trns ip, sb blk - blk, f grn, m	
ang, calc, occ silty sh; O SHW: thk mod bl/wh cut, fast thk bl/wh stmg, tr sin, tr o		ang, calc, occ silty sh; O SHW: thk mod bl/wh cut, fast thk bl/wh str	





MD: 8,198
TVD: 7,133.79
Inclination: 88.76
Azimuth: 270.12

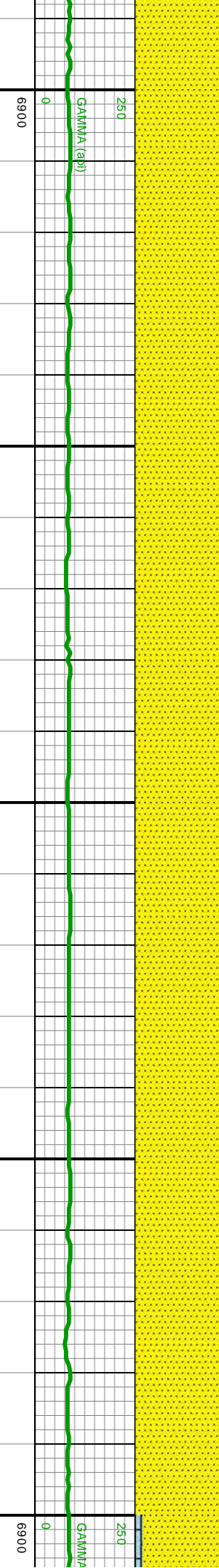
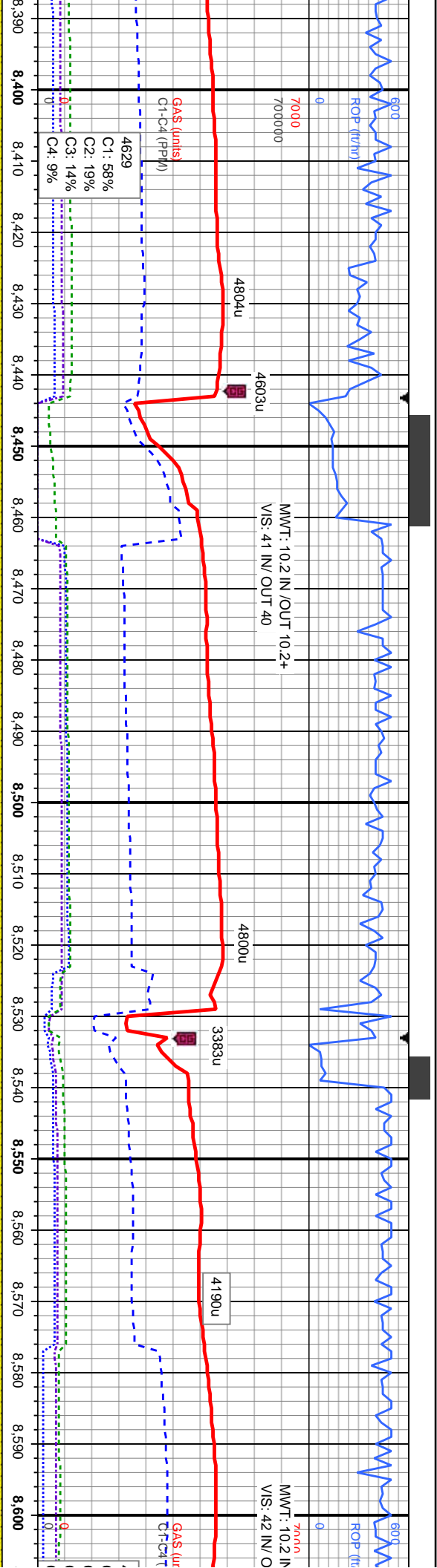
MD: 8,288
TVD: 7,136.71
Inclination: 87.53
Azimuth: 269.25

MD: 8,378
TVD: 7,139.49
Inclination: 88.92
Azimuth: 269.27

mod frm, sl brit, p srt, sb rnd - sb
g, tr sin, tr o

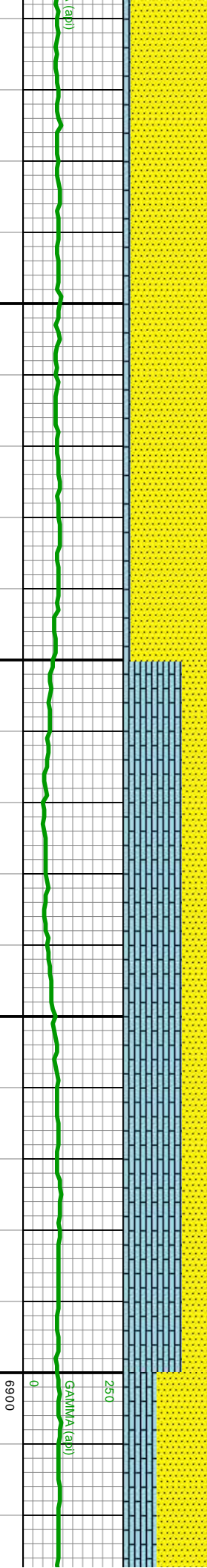
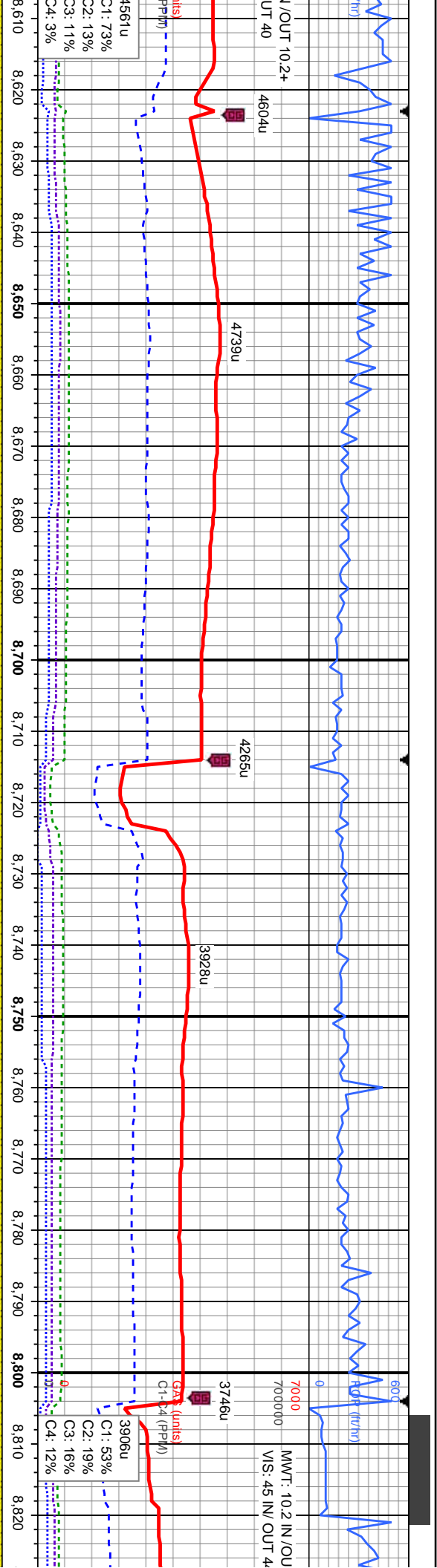
100% SS: lt - med brn/gy, sb blk - blk, f grn, p srt, sb rnd, mod frm, brit, calc, tr silty sh;
O SHW: thk mod bl/wh cut, fast thk bl/wh stmg, sl tr sin, sl tr o

100% SS: lt - med brn/gy, sb blk - blk, f grn, p srt, sb rnd, mod frm, brit, calc, tr silty sl;
bri bl/wh cut, fast thk bl/wh stmg, fr sin, fr o



MD: 8,468 TVD: 7,140.08 Inclination: 90.33° Azimuth: 270.6°	
TVD (ft)	
MD: 8,558 TVD: 7,138.76 Inclination: 91.35° Azimuth: 270.83°	
TVD (ft)	





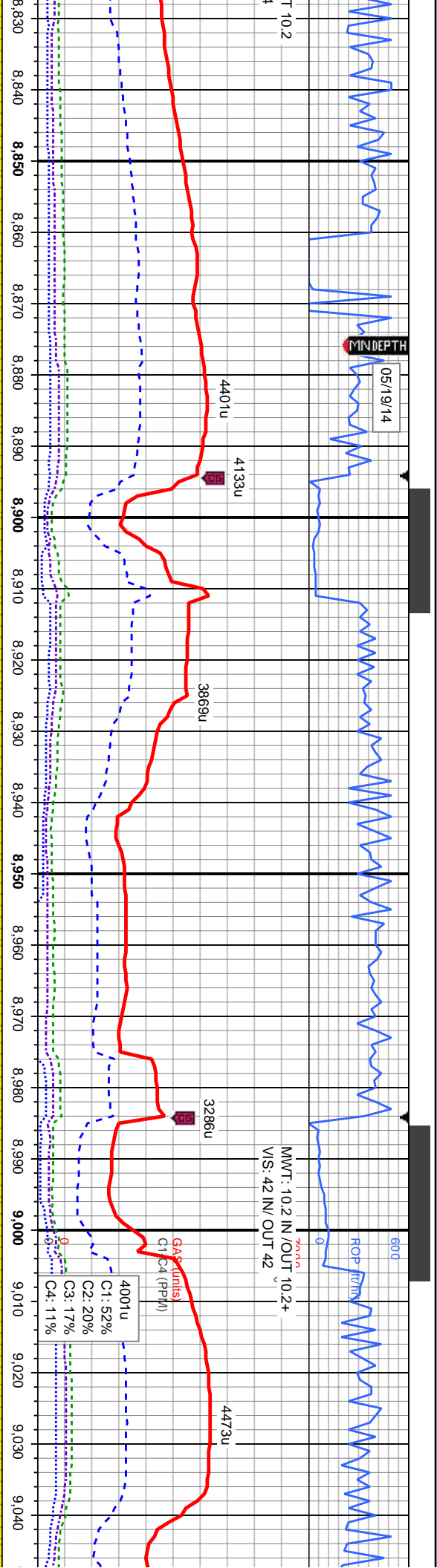
MD: 8,648
TVD: 7,137.03
Inclination: 90.86
Azimuth: 271.21

MD: 8,738
TVD: 7,138
Inclination: 87.9
Azimuth: 270.17

MD: 8,828
TVD: 7,139
Inclination: 87.9
Azimuth: 270.17

SS: lt - med brn/gy, sb blk - blk, f grn, p srt, sb rnd - sb ang, frm, brit: 10% LS: lt crm - wh, sft 70% LS: lt crm - wh, sft
SS: lt - med brn/gy, sb blk - blk, f grn, p srt, sb rnd - sb ang, frm, f grn, p srt, sb rnd - sb ang, tr sly sh: O SHW: thk bri
cut, mod thk b/w wh string, tr sin, tr o





MD: 8,918
TVD: 7,143.57
Inclination: 88.89
Azimuth: 269.25

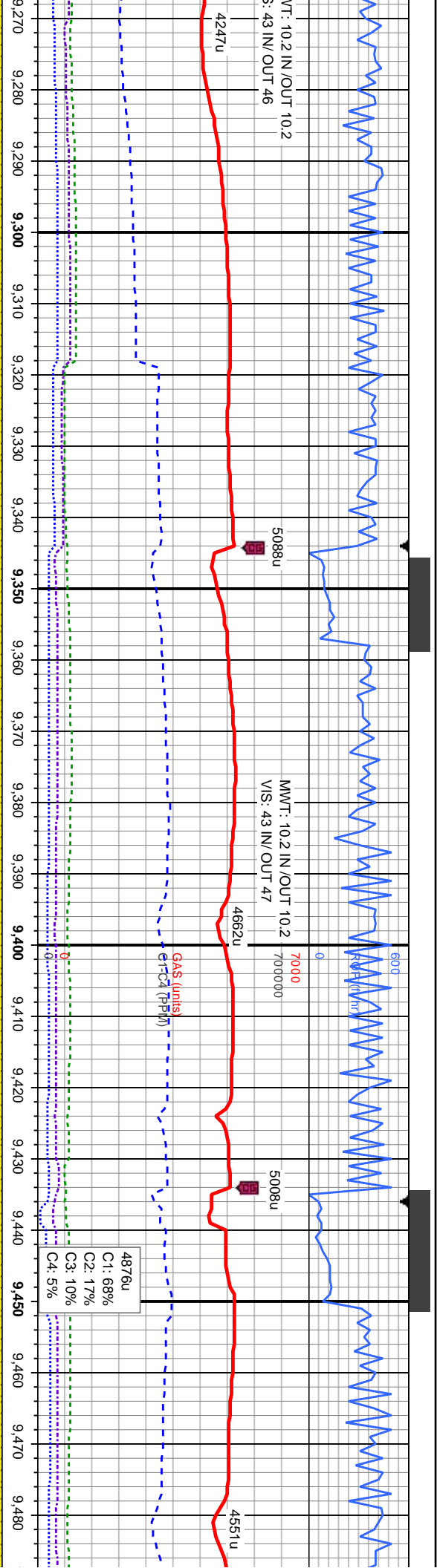
MD: 8,918
TVD: 7,143.57
Inclination: 88.89
Azimuth: 269.25

MD: 9,008
TVD: 7,143.53
Inclination: 91.16
Azimuth: 268.88

100% SS: lt - med brn/gy, sb blkly - blkly, f grn, p srt, sb rnd - sb ang, frm, calc, 40% LS; lt crm - wh, sft
brit, abnt ls; O SHW: thk bl/wh cut, mod thk bl/wh string, sl tr str, sl tr o

100% SS: lt - med brn/gy, occ wh - trns l p, sb
jls, occ silty sh; O SHW: thk bl/wh cut, mod thk





MD: 9,278
TVD: 7,139.49
Inclination: 90.24
Azimuth: 267.23

MD: 9,368
TVD: 7,138.94
Inclination: 90.46
Azimuth: 268.85

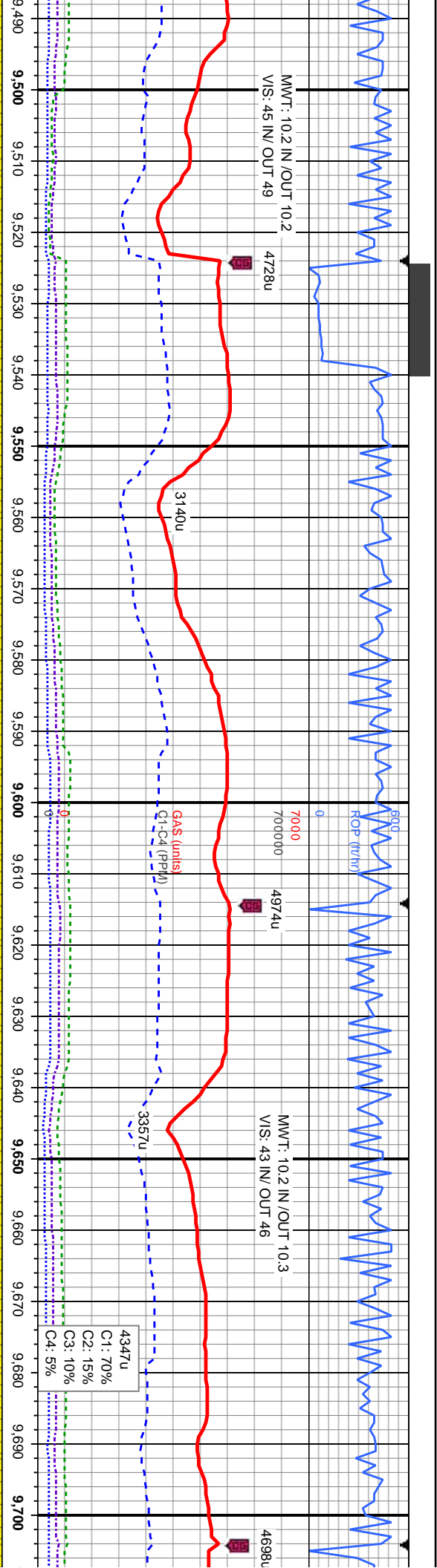
MD: 9,458
TVD: 7,138.08
Inclination: 90.64
Azimuth: 269.89

ng, calc, frm, brit, tr silty

100% SS: lt - med brn/gy, sb blk/y - blk/y, mod - frm, brit, f grn, p srt, sb rnd - sb ang, calc, tr silty
sh: O SHW: thk bl/wh cut, mod thk bl/wh string, sl tr str, sl tr o

100% SS: lt - med brn/gy, sb blk/y - blk/y, mod - frm, brit, f grn, p srt, sb rnd - sb ang, c
7sr: O SHW: thk bl/wh cut, mod thk bl/wh string, sl tr str, sl tr o





MD: 9,548
TVD: 7,137.77
Inclination: 89.75
Azimuth: 271.42

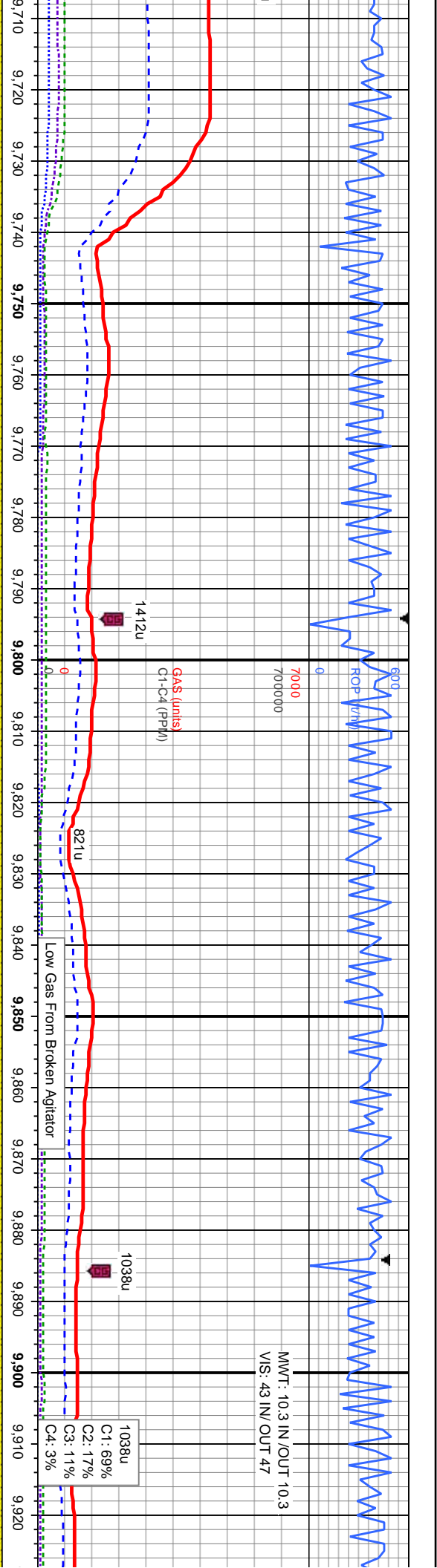
MD: 9,638
TVD: 7,138.34
Inclination: 89.53
Azimuth: 271.67

100% SS: lt - med brn/gy, sm dk brn/gy, sb blk - blk, frm, brit, f grn, p srt, sb rnd - sb ang, calc.
100% SS: lt - med brn/gy, sm dk brn/gy, sb blk - blk, frm, brit, f grn, p srt, sb rnd - sb ang, calc.

100% SS: lt - med brn/gy, sm dk brn/gy, sb blk - blk, frm, brit, f grn, p srt, sb rnd - sb ang, calc.
100% SS: lt - med brn/gy, sm dk brn/gy, sb blk - blk, frm, brit, f grn, p srt, sb rnd - sb ang, calc.

calc, tr sily	tr sily sh, O SHW: thk bl/wh cut, fast thk bl/wh stmg, g str, g o	7tr sily sh, O SHW: thk bl/wh cut, fast thk bl/wh stmg, fr str, fr o	100% SHV
---------------	---	--	----------





MD: 9,728
TVD: 7,139.13
Inclination: 89.47
Azimuth: 271.73

MD: 9,818
TVD: 7,140.03
Inclination: 89.38
Azimuth: 271.43

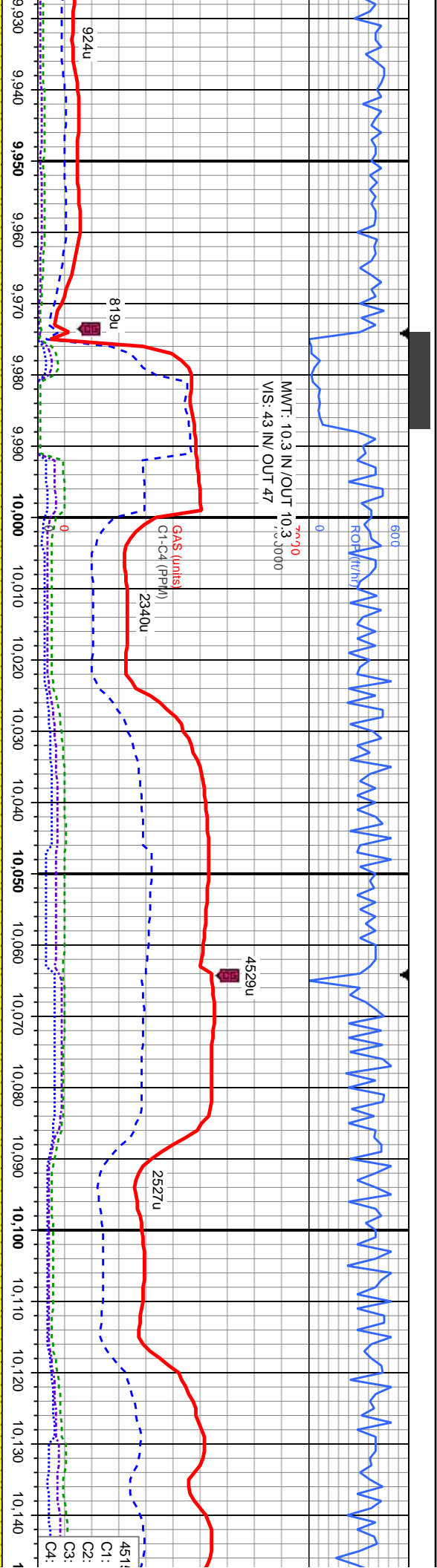
MD: 9,908
TVD: 7,141.13
Inclination: 89.22
Azimuth: 271.15

% SS: lt - dk brn/gy, sb blk/gy - blk/gy, frm, brit, f grn, p srt, sb md - sb ang, calc, tr silty sh: O
V: thk bl/wh cut, fast thk bl/wh string, tr sn, tr o

100% SS: lt - dk brn/gy, sb blk/gy - blk/gy, frm, brit, f grn, p srt, sb md - sb ang, calc, sl tr silty sh: O
SHW: thk bl/wh cut, fast thk bl/wh string, g sn, g o

100% SS: lt - dk brn/gy, sb blk/gy - blk/gy, frm, brit, f grn, p srt, sb md - sb ang, calc, sl tr silty sh: O
SHW: thk bl/wh cut, fast



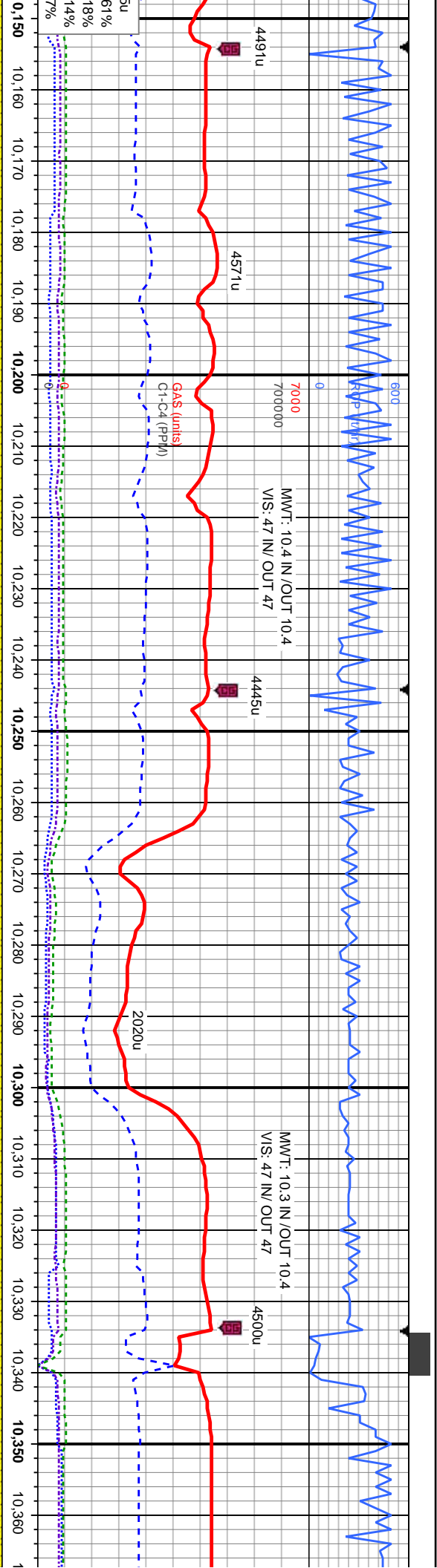


MD: 9.998
TVD: 7,141.31
Inclination: 90.55
Azimuth: 271.27

MD: 10.088
TVD: 7,140.37
Inclination: 90.64
Azimuth: 271.67

sb blkly - blkly, frm, brit, f grn, p srt, sb rnd - sb ang, calc, sl tr slty sh; O 100% SS: lt - dk brn/gy, sb blkly - blkly, frm, brit, f grn, p srt, sb rnd - sb ang, calc; O SHW: thk b/w wh stmg, mod stn, mod o b/w wh cut, fast thk b/w wh stmg, fr stn, fr o

100% SS: lt - dk brn/gy, sb blkly - blkly, frm, brit, f grn, p srt, sb rnd - sb ang, calc; O SHW: thk b/w wh cut, fast thk b/w wh stmg, mod



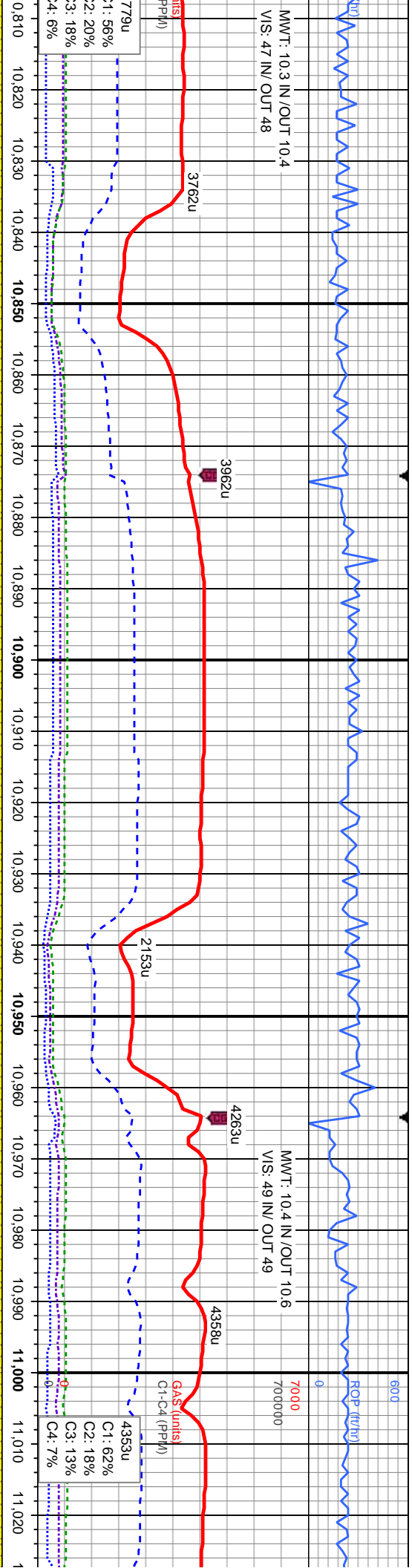
MD: 10.178
TVD: 7.139.78
Inclination: 90.12
Azimuth: 271.1

MD: 10.268
TVD: 7.139.9
Inclination: 89.72
Azimuth: 270.26

MD: 10.358
TVD: 7.140.41
Inclination: 89.63
Azimuth: 270.04

10.150	10.160	10.170	10.180	10.190	10.200	10.210	10.220	10.230	10.240	10.250	10.260	10.270	10.280	10.290	10.300	10.310	10.320	10.330	10.340	10.350	10.360
100% SS: lt - dk brn/gy, sb biky - biky, frm, brit, f grn, p srl, sb rnd - sb ang, calc, sl tr stly sh; O	100% SS: lt - dk brn/gy, sb biky - biky, frm, brit, f grn, p srl, sb rnd - sb ang, calc, O SHW: thk bri	100% SS: lt - dk brn/gy, sb biky - biky, frm, brit, f grn, p srl, sb rnd - sb ang, calc, O SHW: thk bri	100% SS: lt - dk brn/gy, sb biky - biky, frm, brit, f grn, p srl, sb rnd - sb ang, calc, O SHW: thk bri	100% SS: lt - dk brn/gy, sb biky - biky, frm, brit, f grn, p srl, sb rnd - sb ang, calc, O SHW: thk bri	100% SS: lt - dk brn/gy, sb biky - biky, frm, brit, f grn, p srl, sb rnd - sb ang, calc, O SHW: thk bri	100% SS: lt - dk brn/gy, sb biky - biky, frm, brit, f grn, p srl, sb rnd - sb ang, calc, O SHW: thk bri	100% SS: lt - dk brn/gy, sb biky - biky, frm, brit, f grn, p srl, sb rnd - sb ang, calc, O SHW: thk bri	100% SS: lt - dk brn/gy, sb biky - biky, frm, brit, f grn, p srl, sb rnd - sb ang, calc, O SHW: thk bri	100% SS: lt - dk brn/gy, sb biky - biky, frm, brit, f grn, p srl, sb rnd - sb ang, calc, O SHW: thk bri	100% SS: lt - dk brn/gy, sb biky - biky, frm, brit, f grn, p srl, sb rnd - sb ang, calc, O SHW: thk bri	100% SS: lt - dk brn/gy, sb biky - biky, frm, brit, f grn, p srl, sb rnd - sb ang, calc, O SHW: thk bri	100% SS: lt - dk brn/gy, sb biky - biky, frm, brit, f grn, p srl, sb rnd - sb ang, calc, O SHW: thk bri	100% SS: lt - dk brn/gy, sb biky - biky, frm, brit, f grn, p srl, sb rnd - sb ang, calc, O SHW: thk bri	100% SS: lt - dk brn/gy, sb biky - biky, frm, brit, f grn, p srl, sb rnd - sb ang, calc, O SHW: thk bri	100% SS: lt - dk brn/gy, sb biky - biky, frm, brit, f grn, p srl, sb rnd - sb ang, calc, O SHW: thk bri	100% SS: lt - dk brn/gy, sb biky - biky, frm, brit, f grn, p srl, sb rnd - sb ang, calc, O SHW: thk bri	100% SS: lt - dk brn/gy, sb biky - biky, frm, brit, f grn, p srl, sb rnd - sb ang, calc, O SHW: thk bri	100% SS: lt - dk brn/gy, sb biky - biky, frm, brit, f grn, p srl, sb rnd - sb ang, calc, O SHW: thk bri	100% SS: lt - dk brn/gy, sb biky - biky, frm, brit, f grn, p srl, sb rnd - sb ang, calc, O SHW: thk bri	100% SS: lt - dk brn/gy, sb biky - biky, frm, brit, f grn, p srl, sb rnd - sb ang, calc, O SHW: thk bri	100% SS: lt - dk brn/gy, sb biky - biky, frm, brit, f grn, p srl, sb rnd - sb ang, calc, O SHW: thk bri





808
41.3
on: 90.52
: 270.62

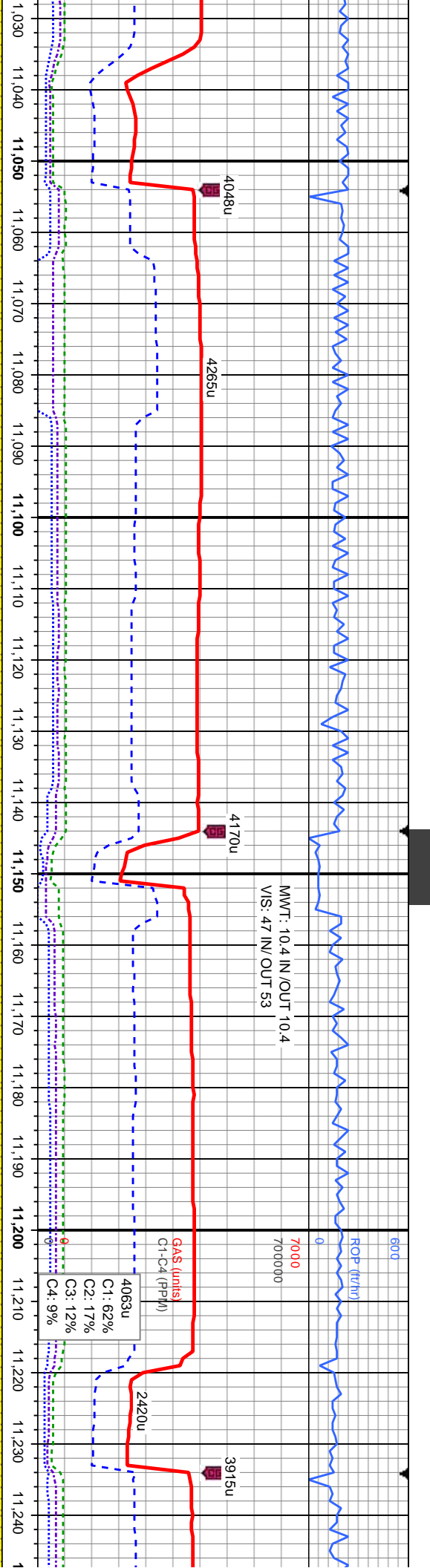
MD: 10,898
TVD: 7,140.48
Inclination: 90.52
Azimuth: 270.34

MD: 10,988
TVD: 7,139.71
Inclination: 90.46
Azimuth: 270.24

SS: lt - dk brn/gy/blk, blk - sb blk, frm, brit, f grn, p srt, sb md - sb ang, mod calc, tr silty sh
W: thk brl bl/wh cut, fast thk bl/wh string, g sin, g o

100% SS: lt - dk brn/gy/bl
calc, tr silty sh, tr ls: O SH





MD: 11,078
TVD: 7,139.01
Inclination: 90.55
Azimuth: 269.59

MD: 11,168
TVD: 7,138.76
Inclination: 89.66
Azimuth: 269.7

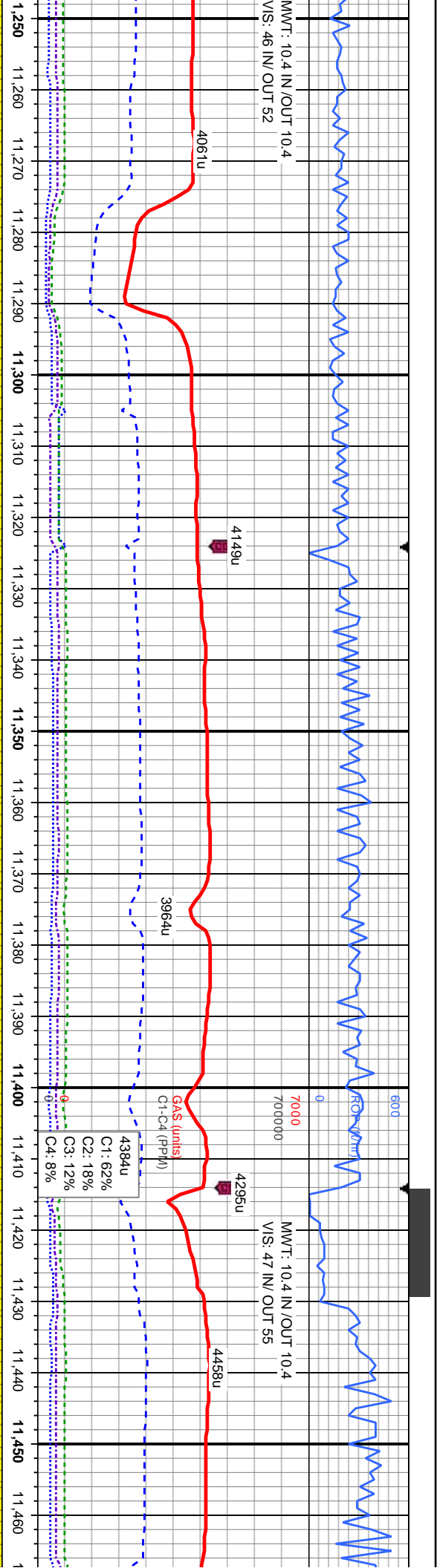
k, wh - trns l ip, blk y - sb blk y, frm, brit, f grn, p srt, sb rnd - sb ang, mod
W, thk bri wh cut, fast thk bl/wh stmg, mod sin, mod o

100% SS: lt - dk brn/gy/blk, wh - trns l ip, blk y - sb blk y, frm, brit, f grn, p srt, sb rnd - sb ang,
mod calc, occ ls: O SHW: thk bri bl/wh cut, fast thk bl/wh stmg, excel sin, excel o

100% SS: lt - dk brn/gy/blk, wh - trns l ip, blk
76calc, occ ls: O SHW: thk bri wh cut, fast thk t

TVD (ft)

250
GAMMA (api)
6900



MD: 11,258
TVD: 7,139.68
Inclination: 89.16
Azimuth: 269.41

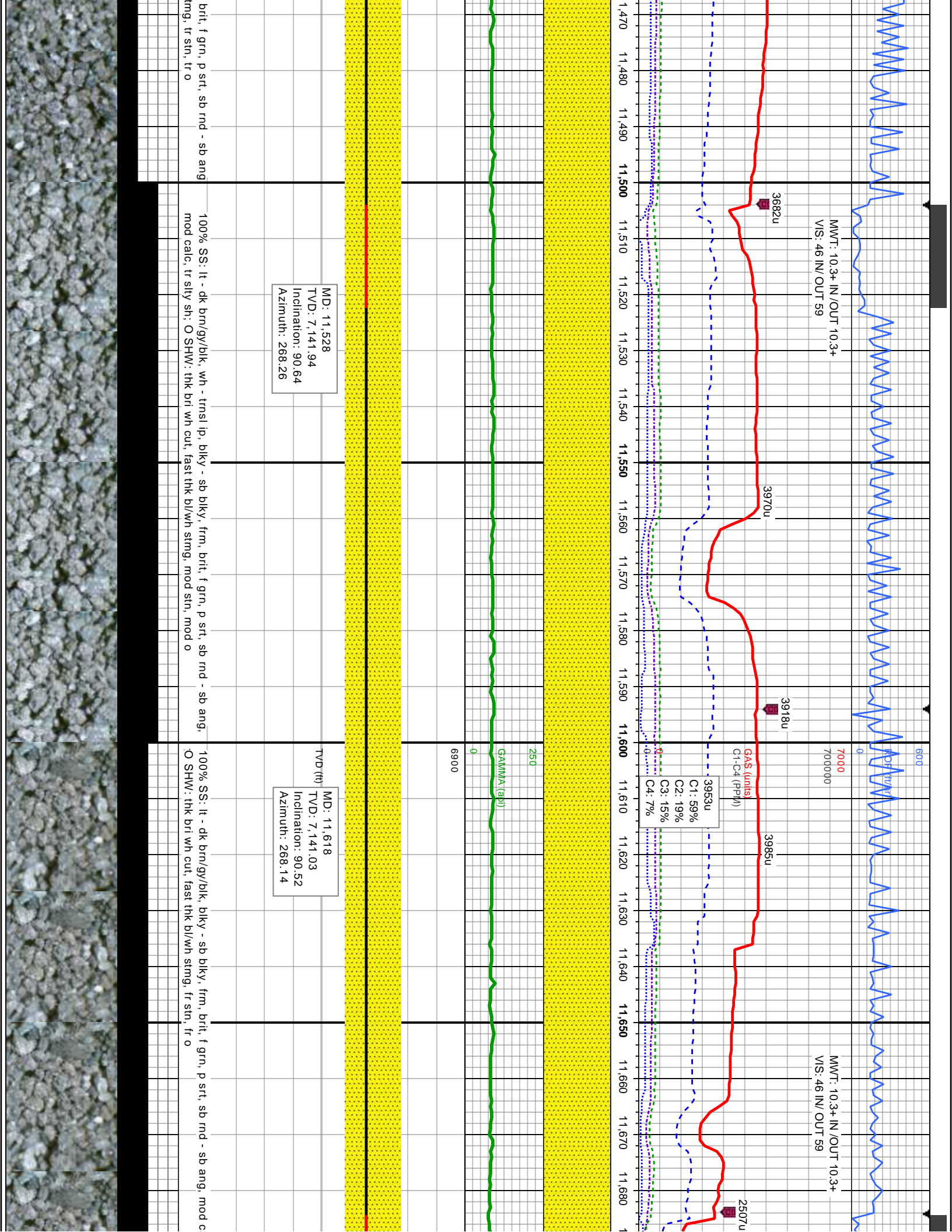
MD: 11,348
TVD: 7,141.22
Inclination: 88.88
Azimuth: 268.99

MD: 11,438
TVD: 7,142.27
Inclination: 89.78
Azimuth: 267.9

100% SS: lt - dk brn/gy/blk, wh - trns l ip, blk y - sb blk y, frm, brit, f grn, p srl, sb rnd - sb ang, calc, occ ls, O SHW: thk bri wh cut, fast thk b/w wh stmg, fr srl, fr o

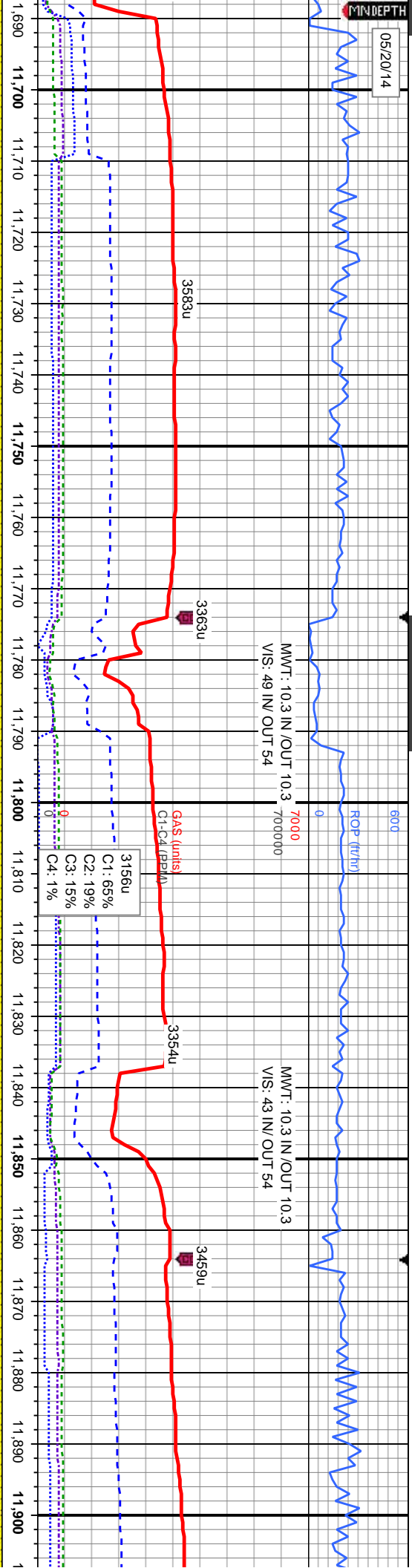
100% SS: lt - dk brn/gy/blk, wh - trns l ip, blk y - sb blk y, frm, brit, f grn, p srl, sb rnd - sb ang, calc, occ ls, tr sily sh, O SHW: thk bri wh cut, fast thk b/w wh stmg, fr srl, fr o





05/20/14

MINDEPTH



MD: 11,708
TVD: 7,140.53
Inclination: 90.12
Azimuth: 268

MD: 11,798
TVD: 7,141.14
Inclination: 89.1
Azimuth: 267.45

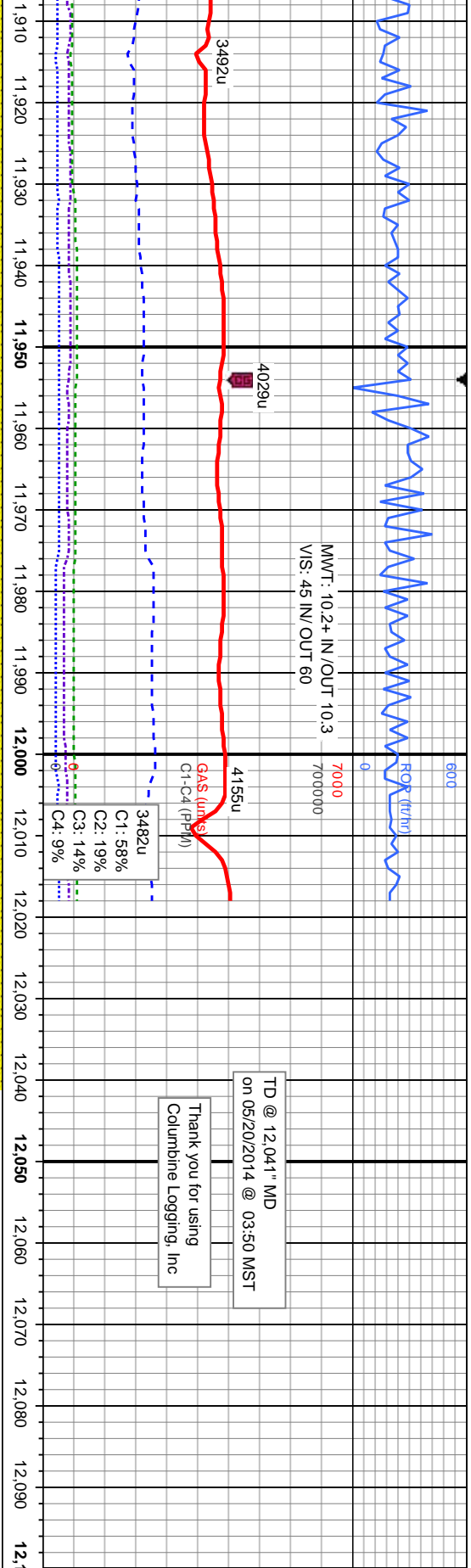
MD: 11,888
TVD: 7,142.7
Inclination: 88.92
Azimuth: 267.04

calc: tr silty silt 100% SS: lt - dk brn/gy, abnt wh - trnsl, blkly - sb blkly, frm, brit, f grn, p srt, sb rnd - sb ang, mod calc: O SHW: thk bri wh cut, fast thk bl/wh string, mod sin, mod o

100% SS: lt - dk brn/gy, abnt wh - trnsl, blkly - sb blkly, frm, brit, vf - f grn, p srt, sb rnd - sb ang, 7unccons, mod calc: O SHW: thk bri wh cut, fast thk bl/wh string, tr sin, tr o

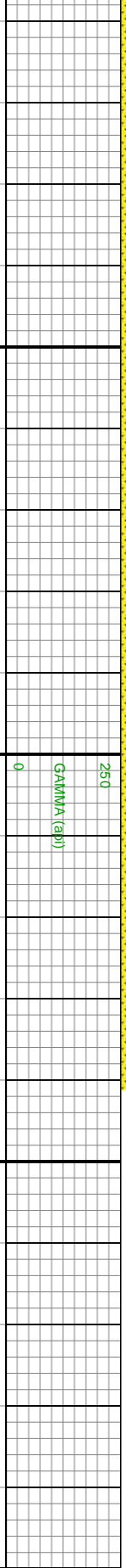
100% SS: lt - dk brn/gy, abnt wh - trnsl, blkly - sb blkly, frm, brit, f grn, p srt, sb rnd - sb ang, 7unccons, mod calc: O SHW: thk bri wh cut, fast thk bl/wh string, tr sin, tr o





TD @ 12,041" MD
on 06/20/2014 @ 03:50 MST

Thank you for using
Columbine Logging, Inc



MD: 11,973
TVD: 7,144.37
Inclination: 88.82
Azimuth: 267.17

MD: 12,041
TVD: 7,145.78
Inclination: 88.82
Azimuth: 267.17

SS: lt - dk brn/gy, abnt wh - trns, blk - sb blk, frm, brit, vf - f grn, p srt, sb rnd - sb ang, mod calc, O SHW: thk bri wh cut, fast thk b/w strng, mod str, mod o

