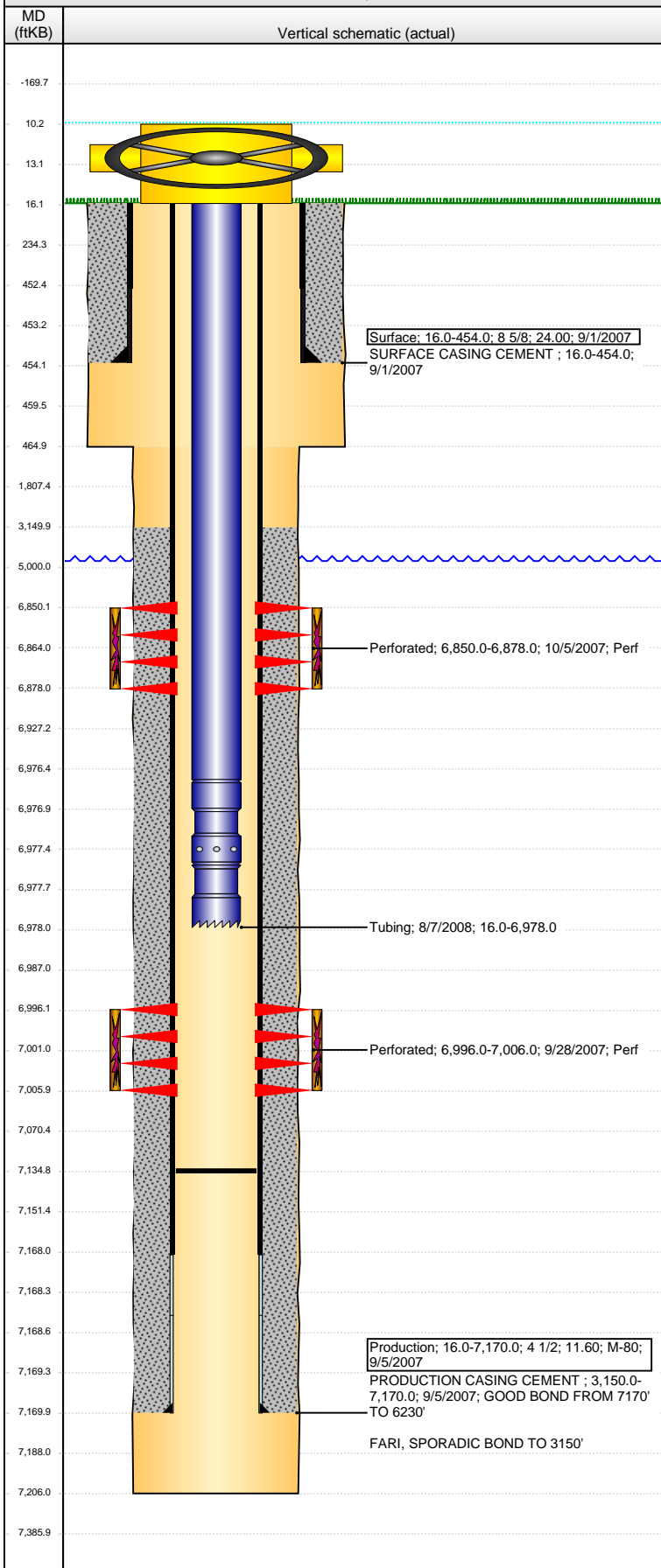


Well Name: LOWER LATHAM 02-45

VERTICAL - ORIGINAL HOLE, 7/8/2014 3:45:40 PM



Well Header

API 05-123-23961	Business Unit WATTENBERG	District 15	Well Config VERTICAL
Original KB Elevation (ft) 4,704.00	KB - GL / MSL (ftKB) 16.00	Spud Date 8/31/2007	P & A Date

Comment

Directions To Well

Congressional Location

Quarter 1	Quarter 2	Quarter 3 NE	Quarter 4 SE	Section 2	Township 4 N	Twtnsh N...	Range 65	Rng E/W Dir W
-----------	-----------	-----------------	-----------------	--------------	-----------------	-------------	-------------	------------------

Bottom Hole Location

North-South Distance (ft)	From N or S Line	East-West Distance (ft)	From E or W Line
---------------------------	------------------	-------------------------	------------------

Plug Back Total Depths

Date	Depth (ftKB)	Method	Com
9/5/2007	7,154.0	TAG	FLOAT COLLAR
9/26/2007	7,135.0	CASED HOLE LOG	DEPTH LOGGER FROM CBL
8/6/2008	7,135.0	TAG	CLEAN OUT & LAND TBG

Wellbore Sections

Section Des	Size (in)	Act Top, MD (ftKB)	Act Btm, MD (ftKB)
SURFACE	12 1/4	16.0	465.0
PRODUCTION	7 7/8	465.0	7,206.0

Zone Statuses

Zone Name	Status Date	Status	Job
NIOBRARA	10/8/2007	PR	DRILLING/COMPLETION - ORIGINAL, 8/31/2007 00:00
CODELL	10/8/2007	PR	DRILLING/COMPLETION - ORIGINAL, 8/31/2007 00:00

Casing Strings

Surface, 454.0ftKB

Casing Description Surface	Run Date 9/1/2007	OD (in) 8 5/8	W/Len (l... 24.00	Grade	Top, MD (ft... 16.0	MD (ftKB) 454.0
-------------------------------	----------------------	------------------	----------------------	-------	------------------------	--------------------

Production, 7,170.0ftKB

Casing Description Production	Run Date 9/5/2007	OD (in) 4 1/2	W/Len (l... 11.60	Grade M-80	Top, MD (ft... 16.0	MD (ftKB) 7,170.0
----------------------------------	----------------------	------------------	----------------------	---------------	------------------------	----------------------

Cement

Description	Top Depth (ftKB)	Bottom Depth (ftKB)
SURFACE CASING CEMENT	16.0	454.0
PRODUCTION CASING CEMENT	3,150.0	7,170.0

Tubing Components

Item Des	OD (in)	Wt (lb/ft)	Grade	Jts	Len (ft)	Btm (ftKB)	Btm (TVD) (ftKB)
Tubing	2 3/8			224	6,960.50	6,976.5	
Pump Seating Nipple	2 3/8				1.00	6,977.5	
Notched collar	2 3/8				0.50	6,978.0	

Perforation Data

Zone	Bnch/St g	Entered Shot Total	Top (ftKB)	Btm (ftKB)	Date
NIOBRARA, ORIGINAL HOLE	B	112	6,850.00	6,878.00	10/5/2007
CODELL, ORIGINAL HOLE		40	6,996.00	7,006.00	9/28/2007

Stimulations & Treatments

Date 10/5/2007	Zone CODELL, ORIGINAL HOLE	Primary Job Type DRILLING/COMPLETION - ORIGINAL
Technical Result	Tech Result Details	Tech Result Note

Comment

Date 10/5/2007	Zone NIOBRARA, ORIGINAL HOLE	Primary Job Type DRILLING/COMPLETION - ORIGINAL
Technical Result	Tech Result Details	Tech Result Note

Comment

Other In Hole

Run Date	Des	OD (in)	Top (ftKB)	Btm (ftKB)

Well Name: LOWER LATHAM 02-45

VERTICAL - ORIGINAL HOLE, 7/8/2014 3:45:42 PM

Logs

Date	Type	Top, MD (ftKB)	Btm, MD (ftKB)
9/4/2007	COMPENSATED DENSITY	3,580.0	7,178.0
9/4/2007	INDUCTION	454.0	7,198.0
9/26/2007	CBL/CCL/GR	3,000.0	7,133.0
9/25/2013	GYRO	16.0	6,950.0

