

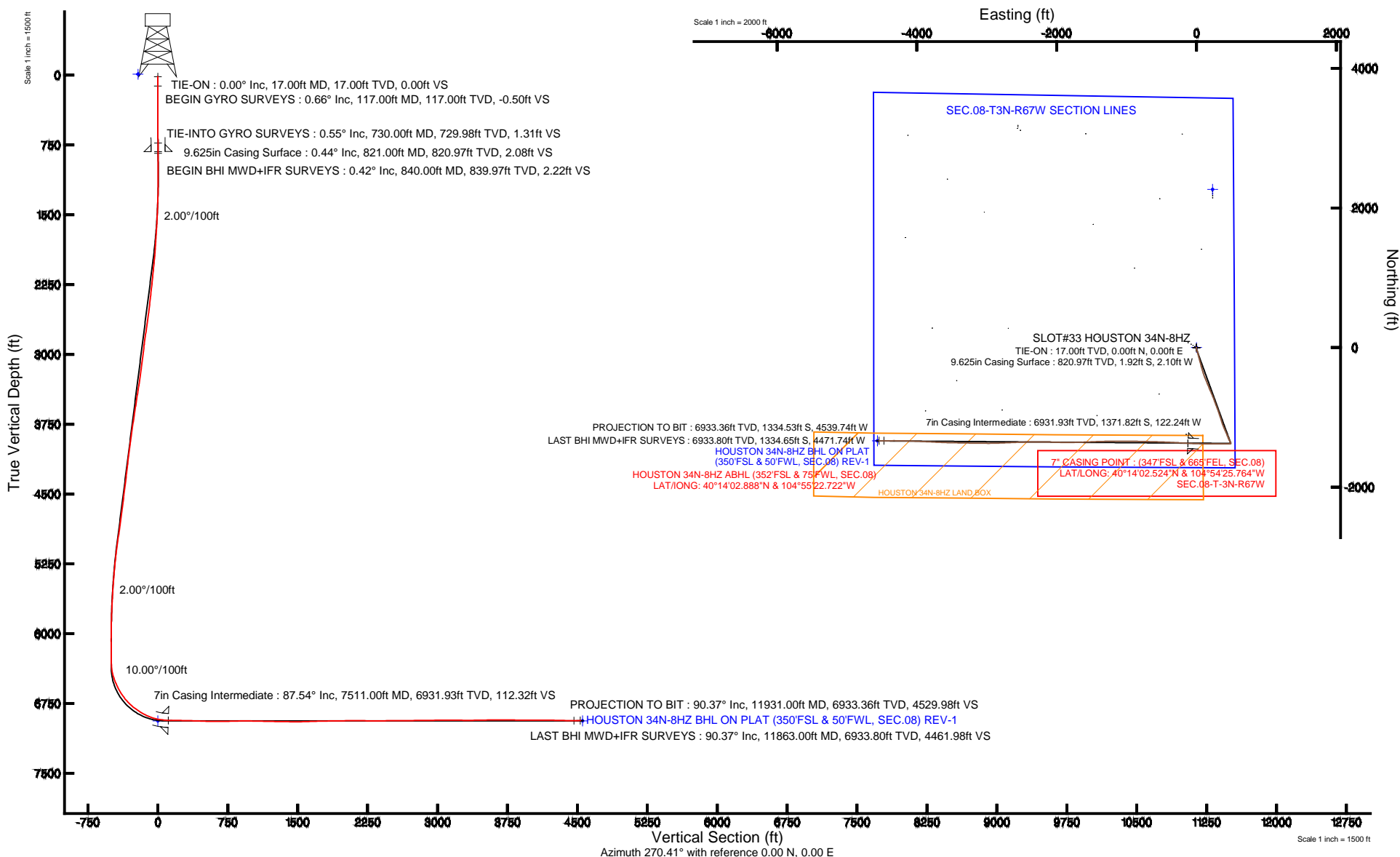
KERR-MCGEE OIL & GAS ONSHORE LP

Location: COLORADO
Field: WELD COUNTY (KERR MCGEE)
Facility: SEC.08-T3N-R67W

Slot: SLOT#33 HOUSTON 34N-8HZ
Well: HOUSTON 34N-8HZ
Wellbore: HOUSTON 34N-8HZ PWB

Plot reference wellpath is HOUSTON 34N-8HZ (REV-A.0) PWP

True vertical depths are referenced to Rig on SLOT#13 HOUSTON 34N-8HZ (RKB)	Grid System: NAD83 / Lambert Colorado SP, Northern Zone (501), US feet
Measured depths are referenced to Rig on SLOT#13 HOUSTON 34N-8HZ (RKB)	North Reference: True north
Rig on SLOT#13 HOUSTON 34N-8HZ (RKB) to Mean Sea Level: 4823 feet	Scale: True distance
Mean Sea Level to Mud line (At Slot: SLOT#33 HOUSTON 34N-8HZ): 0 feet	Depths are in feet
Coordinates are in feet referenced to Slot	Created by: ingmjmr on 7/7/2014



Actual Wellpath Report

HOUSTON 34N-8HZ AWP

Page 1 of 8

REFERENCE WELLPATH IDENTIFICATION

Operator	KERR-MCGEE OIL & GAS ONSHORE LP	Slot	SLOT#33 HOUSTON 34N-8HZ
Area	COLORADO	Well	HOUSTON 34N-8HZ
Field	WELD COUNTY (KERR MCGEE)	Wellbore	HOUSTON 34N-8HZ AWB
Facility	SEC.08-T3N-R67W		

REPORT SETUP INFORMATION

Projection System	NAD83 / Lambert Colorado SP, Northern Zone (501), US feet	Software System	WellArchitect® 4.0.0
North Reference	True	User	Ingmjmr
Scale	0.999957	Report Generated	7/7/2014 at 3:55:55 PM
Convergence at slot	n/a	Database/Source file	Anadarko Map Checks/HOUSTON_34N-8HZ_AWB.xml

WELLPATH LOCATION

	Local coordinates		Grid coordinates		Geographic coordinates	
	North[ft]	East[ft]	Easting[US ft]	Northing[US ft]	Latitude	Longitude
Slot Location	-2265.25	-229.94	3165629.03	1330026.48	40°14'16.080"N	104°54'24.188"W
Facility Reference Pt			3165843.78	1332293.12	40°14'38.465"N	104°54'21.223"W
Field Reference Pt			3197771.84	1268891.29	40°04'09.600"N	104°47'36.000"W

WELLPATH DATUM

Calculation method	Minimum curvature	Rig on SLOT#13 HOUSTON 34N-8HZ (RKB) to Facility Vertical Datum	4823.00ft
Horizontal Reference Pt	Slot	Rig on SLOT#13 HOUSTON 34N-8HZ (RKB) to Mean Sea Level	4823.00ft
Vertical Reference Pt	Rig on SLOT#13 HOUSTON 34N-8HZ (RKB)	Rig on SLOT#13 HOUSTON 34N-8HZ (RKB) to Mud Line at Slot (SLOT#33 HOUSTON 34N-8HZ)	4823.00ft
MD Reference Pt	Rig on SLOT#13 HOUSTON 34N-8HZ (RKB)	Section Origin	N 0.00, E 0.00 ft
Field Vertical Reference	Mean Sea Level	Section Azimuth	253.62°

REFERENCE WELLPATH IDENTIFICATION

Operator	KERR-MCGEE OIL & GAS ONSHORE LP	Slot	SLOT#33 HOUSTON 34N-8HZ
Area	COLORADO	Well	HOUSTON 34N-8HZ
Field	WELD COUNTY (KERR MCGEE)	Wellbore	HOUSTON 34N-8HZ AWB
Facility	SEC.08-T3N-R67W		

WELLPATH DATA (150 stations) † = interpolated/extrapolated station

MD [ft]	Inclination [°]	Azimuth [°]	TVD [ft]	Vert Sect [ft]	North [ft]	East [ft]	Latitude	Longitude	DLS [°/100ft]	Comments
0.00†	0.000	120.170	0.00	0.00	0.00	0.00	40°14'16.080"N	104°54'24.188"W	0.00	
17.00	0.000	120.170	17.00	0.00	0.00	0.00	40°14'16.080"N	104°54'24.188"W	0.00	TIE-ON
117.00	0.660	120.170	117.00	-0.40	-0.29	0.50	40°14'16.077"N	104°54'24.182"W	0.66	BEGIN GYRO SURVEYS
217.00	0.660	256.640	216.99	-0.22	-0.71	0.44	40°14'16.073"N	104°54'24.182"W	1.23	
317.00	0.630	190.140	316.99	0.60	-1.39	-0.22	40°14'16.066"N	104°54'24.191"W	0.71	
417.00	0.510	4.830	416.99	0.69	-1.48	-0.28	40°14'16.065"N	104°54'24.192"W	1.14	
517.00	0.400	121.850	516.99	0.29	-1.22	0.05	40°14'16.068"N	104°54'24.187"W	0.78	
617.00	0.570	251.000	616.98	0.56	-1.57	-0.12	40°14'16.064"N	104°54'24.190"W	0.88	
717.00	0.680	263.200	716.98	1.64	-1.80	-1.18	40°14'16.062"N	104°54'24.203"W	0.17	
730.00	0.550	265.130	729.98	1.78	-1.82	-1.32	40°14'16.062"N	104°54'24.205"W	1.01	TIE-INTO GYRO SURVEYS
840.00	0.420	256.870	839.97	2.70	-1.95	-2.24	40°14'16.061"N	104°54'24.217"W	0.13	BEGIN BHI MWD+IFR SURVEYS
931.00	0.780	202.220	930.97	3.42	-2.60	-2.80	40°14'16.054"N	104°54'24.224"W	0.70	
1023.00	2.190	177.220	1022.94	4.22	-4.94	-2.95	40°14'16.031"N	104°54'24.226"W	1.65	
1114.00	3.470	178.400	1113.82	5.33	-9.43	-2.79	40°14'15.987"N	104°54'24.224"W	1.41	
1206.00	4.530	171.750	1205.60	6.56	-15.81	-2.19	40°14'15.924"N	104°54'24.216"W	1.26	
1297.00	5.280	164.580	1296.27	7.14	-23.40	-0.56	40°14'15.849"N	104°54'24.195"W	1.06	
1388.00	6.720	165.240	1386.77	7.36	-32.59	1.91	40°14'15.758"N	104°54'24.163"W	1.58	
1480.00	7.910	161.420	1478.02	7.27	-43.79	5.30	40°14'15.647"N	104°54'24.120"W	1.40	
1572.00	9.120	159.660	1569.00	6.52	-56.63	9.85	40°14'15.520"N	104°54'24.061"W	1.35	
1692.00	10.780	160.310	1687.19	5.22	-76.11	16.94	40°14'15.328"N	104°54'23.970"W	1.39	
1783.00	13.210	167.190	1776.20	5.37	-94.27	22.11	40°14'15.148"N	104°54'23.903"W	3.09	
1875.00	16.000	167.730	1865.22	6.94	-116.91	27.14	40°14'14.925"N	104°54'23.838"W	3.04	
1967.00	18.140	163.700	1953.17	7.87	-143.05	33.85	40°14'14.666"N	104°54'23.751"W	2.66	
2058.00	20.290	165.140	2039.09	8.31	-171.90	41.88	40°14'14.381"N	104°54'23.648"W	2.42	
2149.00	20.910	164.370	2124.27	8.94	-202.79	50.30	40°14'14.076"N	104°54'23.539"W	0.74	
2241.00	20.880	165.250	2210.22	9.62	-234.46	58.90	40°14'13.763"N	104°54'23.429"W	0.34	
2332.00	20.870	163.190	2295.25	9.96	-265.66	67.71	40°14'13.455"N	104°54'23.315"W	0.81	
2424.00	21.800	164.390	2380.94	10.07	-297.80	77.05	40°14'13.137"N	104°54'23.195"W	1.12	
2516.00	22.720	165.110	2466.09	10.76	-331.42	86.21	40°14'12.805"N	104°54'23.076"W	1.04	
2608.00	23.290	162.750	2550.77	10.95	-365.96	96.17	40°14'12.464"N	104°54'22.948"W	1.18	

REFERENCE WELLPATH IDENTIFICATION

Operator	KERR-MCGEE OIL & GAS ONSHORE LP	Slot	SLOT#33 HOUSTON 34N-8HZ
Area	COLORADO	Well	HOUSTON 34N-8HZ
Field	WELD COUNTY (KERR MCGEE)	Wellbore	HOUSTON 34N-8HZ AWB
Facility	SEC.08-T3N-R67W		

WELLPATH DATA (150 stations)

MD [ft]	Inclination [°]	Azimuth [°]	TVD [ft]	Vert Sect [ft]	North [ft]	East [ft]	Latitude	Longitude	DLS [°/100ft]	Comments
2699.00	21.350	159.010	2634.95	9.34	-398.61	107.44	40°14'12.141"N	104°54'22.803"W	2.64	
2791.00	20.570	157.130	2720.87	6.17	-429.14	119.72	40°14'11.839"N	104°54'22.644"W	1.12	
2883.00	19.240	157.650	2807.37	2.77	-458.05	131.77	40°14'11.554"N	104°54'22.489"W	1.46	
2973.00	18.900	158.780	2892.43	0.00	-485.36	142.68	40°14'11.284"N	104°54'22.348"W	0.56	
3065.00	17.680	155.900	2979.78	-3.14	-512.00	153.78	40°14'11.020"N	104°54'22.205"W	1.65	
3156.00	17.590	158.670	3066.51	-6.18	-537.42	164.42	40°14'10.769"N	104°54'22.068"W	0.93	
3248.00	17.950	158.670	3154.12	-8.60	-563.58	174.64	40°14'10.511"N	104°54'21.936"W	0.39	
3340.00	20.520	158.530	3240.98	-11.25	-591.79	185.70	40°14'10.232"N	104°54'21.794"W	2.79	
3425.00	21.550	155.920	3320.31	-14.67	-619.91	197.52	40°14'09.954"N	104°54'21.641"W	1.64	
3510.00	21.310	156.520	3399.44	-18.67	-648.33	210.04	40°14'09.673"N	104°54'21.480"W	0.38	
3595.00	20.840	157.000	3478.75	-22.32	-676.42	222.10	40°14'09.396"N	104°54'21.324"W	0.59	
3680.00	21.540	157.080	3558.00	-25.84	-704.71	234.09	40°14'09.116"N	104°54'21.170"W	0.82	
3766.00	23.370	159.250	3637.48	-28.93	-735.20	246.28	40°14'08.815"N	104°54'21.012"W	2.34	
3851.00	22.540	161.040	3715.75	-30.95	-766.37	257.55	40°14'08.507"N	104°54'20.867"W	1.28	
3936.00	23.640	160.010	3793.94	-32.76	-797.80	268.67	40°14'08.196"N	104°54'20.724"W	1.38	
4021.00	21.330	159.440	3872.47	-34.96	-828.29	279.92	40°14'07.895"N	104°54'20.579"W	2.73	
4107.00	19.910	158.590	3952.96	-37.38	-856.57	290.76	40°14'07.615"N	104°54'20.439"W	1.69	
4192.00	19.200	158.200	4033.06	-39.97	-883.02	301.24	40°14'07.354"N	104°54'20.304"W	0.85	
4277.00	18.510	160.720	4113.50	-41.97	-908.74	310.88	40°14'07.100"N	104°54'20.179"W	1.26	
4362.00	19.050	162.110	4193.97	-43.02	-934.67	319.60	40°14'06.844"N	104°54'20.067"W	0.83	
4448.00	21.110	162.140	4274.74	-43.79	-962.77	328.66	40°14'06.566"N	104°54'19.950"W	2.40	
4533.00	20.830	161.420	4354.11	-44.76	-991.67	338.17	40°14'06.280"N	104°54'19.828"W	0.45	
4618.00	22.280	161.910	4433.16	-45.82	-1021.31	347.99	40°14'05.987"N	104°54'19.701"W	1.72	
4703.00	19.990	162.650	4512.44	-46.55	-1050.50	357.33	40°14'05.699"N	104°54'19.581"W	2.71	
4790.00	20.730	162.550	4594.00	-47.08	-1079.38	366.38	40°14'05.414"N	104°54'19.464"W	0.85	
4874.00	21.620	159.200	4672.34	-48.55	-1108.03	376.33	40°14'05.130"N	104°54'19.336"W	1.79	
4959.00	19.440	158.500	4751.93	-51.02	-1135.83	387.08	40°14'04.856"N	104°54'19.197"W	2.58	
5044.00	18.130	156.580	4832.40	-53.91	-1161.13	397.52	40°14'04.606"N	104°54'19.062"W	1.70	
5129.00	19.350	155.340	4912.90	-57.55	-1186.07	408.65	40°14'04.359"N	104°54'18.919"W	1.51	
5214.00	19.880	156.600	4992.96	-61.35	-1212.13	420.27	40°14'04.102"N	104°54'18.769"W	0.80	

REFERENCE WELLPATH IDENTIFICATION

Operator	KERR-MCGEE OIL & GAS ONSHORE LP	Slot	SLOT#33 HOUSTON 34N-8HZ
Area	COLORADO	Well	HOUSTON 34N-8HZ
Field	WELD COUNTY (KERR MCGEE)	Wellbore	HOUSTON 34N-8HZ AWB
Facility	SEC.08-T3N-R67W		

WELLPATH DATA (150 stations)

MD [ft]	Inclination [°]	Azimuth [°]	TVD [ft]	Vert Sect [ft]	North [ft]	East [ft]	Latitude	Longitude	DLS [°/100ft]	Comments
5299.00	18.230	157.050	5073.30	-64.63	-1237.64	431.19	40°14'03.850"N	104°54'18.628"W	1.95	
5384.00	15.360	156.840	5154.67	-67.48	-1260.23	440.81	40°14'03.626"N	104°54'18.504"W	3.38	
5470.00	14.740	156.960	5237.72	-70.10	-1280.77	449.57	40°14'03.423"N	104°54'18.391"W	0.72	
5555.00	12.640	157.350	5320.30	-72.37	-1299.31	457.38	40°14'03.240"N	104°54'18.291"W	2.47	
5640.00	11.270	156.020	5403.45	-74.48	-1315.48	464.34	40°14'03.080"N	104°54'18.201"W	1.64	
5725.00	9.540	154.770	5487.05	-76.66	-1329.44	470.72	40°14'02.942"N	104°54'18.119"W	2.05	
5811.00	8.650	157.200	5571.97	-78.48	-1341.85	476.26	40°14'02.820"N	104°54'18.047"W	1.13	
5896.00	6.700	157.190	5656.21	-79.75	-1352.32	480.66	40°14'02.716"N	104°54'17.990"W	2.29	
5981.00	5.800	155.670	5740.70	-80.90	-1360.80	484.35	40°14'02.633"N	104°54'17.943"W	1.08	
6067.00	4.660	156.390	5826.34	-81.94	-1367.96	487.54	40°14'02.562"N	104°54'17.902"W	1.33	
6152.00	2.810	157.640	5911.16	-82.59	-1373.05	489.72	40°14'02.512"N	104°54'17.874"W	2.18	
6237.00	1.330	158.590	5996.10	-82.90	-1375.90	490.87	40°14'02.483"N	104°54'17.859"W	1.74	
6322.00	0.370	199.740	6081.09	-82.82	-1377.08	491.14	40°14'02.472"N	104°54'17.855"W	1.27	
6407.00	0.390	259.360	6166.09	-82.37	-1377.39	490.76	40°14'02.469"N	104°54'17.860"W	0.44	
6510.00	0.610	274.470	6269.08	-81.51	-1377.41	489.87	40°14'02.469"N	104°54'17.872"W	0.25	
6579.00	1.970	263.380	6338.06	-80.00	-1377.52	488.33	40°14'02.467"N	104°54'17.892"W	1.99	
6621.00	7.260	268.140	6379.91	-76.71	-1377.69	484.96	40°14'02.466"N	104°54'17.935"W	12.62	
6664.00	12.940	268.860	6422.23	-69.43	-1377.87	477.42	40°14'02.464"N	104°54'18.032"W	13.21	
6706.00	17.590	267.430	6462.74	-58.73	-1378.25	466.37	40°14'02.460"N	104°54'18.175"W	11.11	
6749.00	20.740	267.910	6503.35	-45.04	-1378.82	452.27	40°14'02.455"N	104°54'18.357"W	7.33	
6792.00	23.900	267.820	6543.12	-29.21	-1379.43	435.95	40°14'02.449"N	104°54'18.567"W	7.35	
6834.00	27.130	268.710	6581.02	-11.71	-1379.97	417.87	40°14'02.443"N	104°54'18.800"W	7.74	
6877.00	29.920	272.080	6618.80	7.93	-1379.80	397.35	40°14'02.445"N	104°54'19.065"W	7.49	
6919.00	33.430	272.030	6654.54	28.85	-1379.01	375.31	40°14'02.453"N	104°54'19.349"W	8.36	
6962.00	36.900	271.230	6689.68	52.40	-1378.31	350.56	40°14'02.460"N	104°54'19.668"W	8.14	
7005.00	41.800	270.370	6722.93	78.44	-1377.94	323.31	40°14'02.463"N	104°54'20.019"W	11.47	
7047.00	46.470	269.010	6753.06	106.54	-1378.11	294.07	40°14'02.462"N	104°54'20.396"W	11.34	
7090.00	49.850	268.310	6781.74	137.48	-1378.87	262.05	40°14'02.454"N	104°54'20.809"W	7.95	
7133.00	53.850	268.830	6808.30	170.14	-1379.71	228.25	40°14'02.446"N	104°54'21.245"W	9.35	
7175.00	57.500	269.670	6831.98	203.53	-1380.16	193.58	40°14'02.441"N	104°54'21.692"W	8.85	

REFERENCE WELLPATH IDENTIFICATION

Operator	KERR-MCGEE OIL & GAS ONSHORE LP	Slot	SLOT#33 HOUSTON 34N-8HZ
Area	COLORADO	Well	HOUSTON 34N-8HZ
Field	WELD COUNTY (KERR MCGEE)	Wellbore	HOUSTON 34N-8HZ AWB
Facility	SEC.08-T3N-R67W		

WELLPATH DATA (150 stations) † = interpolated/extrapolated station

MD [ft]	Inclination [°]	Azimuth [°]	TVD [ft]	Vert Sect [ft]	North [ft]	East [ft]	Latitude	Longitude	DLS [°/100ft]	Comments
7218.00	60.200	270.200	6854.22	238.85	-1380.20	156.78	40°14'02.441"N	104°54'22.167"W	6.37	
7260.00	63.860	271.440	6873.91	274.27	-1379.66	119.70	40°14'02.446"N	104°54'22.645"W	9.10	
7303.00	67.520	271.070	6891.61	311.61	-1378.80	80.52	40°14'02.455"N	104°54'23.150"W	8.55	
7346.00	72.370	272.140	6906.36	350.02	-1377.67	40.16	40°14'02.466"N	104°54'23.670"W	11.52	
7388.00	77.690	271.750	6917.20	388.52	-1376.29	-0.38	40°14'02.480"N	104°54'24.193"W	12.70	
7431.00	81.550	271.790	6924.95	428.70	-1374.98	-42.64	40°14'02.493"N	104°54'24.738"W	8.98	
7466.00	85.060	272.210	6929.03	461.69	-1373.77	-77.38	40°14'02.505"N	104°54'25.186"W	10.10	
7511.00†	87.537	272.772	6931.93	504.18	-1371.82	-122.24	40°14'02.524"N	104°54'25.764"W	5.64	7" CASING POINT
7563.00	90.400	273.420	6932.87	553.19	-1369.01	-174.15	40°14'02.552"N	104°54'26.433"W	5.64	
7648.00	89.040	273.000	6933.28	633.26	-1364.25	-259.01	40°14'02.599"N	104°54'27.528"W	1.67	
7733.00	88.510	272.830	6935.10	713.47	-1359.93	-343.88	40°14'02.641"N	104°54'28.622"W	0.65	
7818.00	87.990	272.450	6937.70	793.79	-1356.02	-428.75	40°14'02.680"N	104°54'29.716"W	0.76	
7904.00	88.150	271.820	6940.59	875.29	-1352.81	-514.64	40°14'02.712"N	104°54'30.824"W	0.76	
7989.00	88.830	271.900	6942.83	955.99	-1350.06	-599.57	40°14'02.739"N	104°54'31.919"W	0.81	
8074.00	90.920	271.260	6943.02	1036.84	-1347.71	-684.53	40°14'02.762"N	104°54'33.014"W	2.57	
8159.00	91.380	271.280	6941.31	1117.82	-1345.83	-769.49	40°14'02.781"N	104°54'34.110"W	0.54	
8244.00	91.660	270.840	6939.06	1198.89	-1344.26	-854.45	40°14'02.796"N	104°54'35.205"W	0.61	
8330.00	89.960	270.880	6937.84	1281.01	-1342.97	-940.43	40°14'02.809"N	104°54'36.314"W	1.98	
8415.00	89.130	270.620	6938.52	1362.24	-1341.85	-1025.42	40°14'02.820"N	104°54'37.409"W	1.02	
8500.00	88.640	269.600	6940.17	1443.72	-1341.69	-1110.40	40°14'02.821"N	104°54'38.505"W	1.33	
8585.00	88.920	269.630	6941.98	1525.41	-1342.26	-1195.38	40°14'02.816"N	104°54'39.601"W	0.33	
8671.00	88.670	268.680	6943.79	1608.25	-1343.53	-1281.35	40°14'02.803"N	104°54'40.709"W	1.14	
8756.00	89.250	268.350	6945.33	1690.38	-1345.73	-1366.30	40°14'02.781"N	104°54'41.805"W	0.79	
8841.00	89.380	267.520	6946.35	1772.73	-1348.79	-1451.24	40°14'02.751"N	104°54'42.900"W	0.99	
8926.00	90.890	268.200	6946.15	1855.12	-1351.97	-1536.18	40°14'02.719"N	104°54'43.995"W	1.95	
9011.00	91.780	268.110	6944.17	1937.37	-1354.70	-1621.11	40°14'02.692"N	104°54'45.090"W	1.05	
9097.00	91.840	268.460	6941.45	2020.53	-1357.28	-1707.03	40°14'02.667"N	104°54'46.198"W	0.41	
9182.00	91.200	269.540	6939.20	2102.45	-1358.76	-1791.99	40°14'02.652"N	104°54'47.293"W	1.48	
9267.00	90.210	270.010	6938.15	2184.09	-1359.09	-1876.98	40°14'02.649"N	104°54'48.389"W	1.29	
9352.00	91.320	271.650	6937.01	2265.27	-1357.86	-1961.96	40°14'02.661"N	104°54'49.485"W	2.33	

REFERENCE WELLPATH IDENTIFICATION

Operator	KERR-MCGEE OIL & GAS ONSHORE LP	Slot	SLOT#33 HOUSTON 34N-8HZ
Area	COLORADO	Well	HOUSTON 34N-8HZ
Field	WELD COUNTY (KERR MCGEE)	Wellbore	HOUSTON 34N-8HZ AWB
Facility	SEC.08-T3N-R67W		

WELLPATH DATA (150 stations)

MD [ft]	Inclination [°]	Azimuth [°]	TVD [ft]	Vert Sect [ft]	North [ft]	East [ft]	Latitude	Longitude	DLS [°/100ft]	Comments
9438.00	90.610	271.750	6935.57	2347.01	-1355.31	-2047.91	40°14'02.686"N	104°54'50.593"W	0.83	
9523.00	90.030	271.460	6935.09	2427.86	-1352.93	-2132.87	40°14'02.710"N	104°54'51.689"W	0.76	
9608.00	89.070	270.490	6935.76	2508.98	-1351.48	-2217.85	40°14'02.724"N	104°54'52.785"W	1.61	
9693.00	89.410	269.750	6936.89	2590.47	-1351.31	-2302.85	40°14'02.725"N	104°54'53.880"W	0.96	
9779.00	90.490	268.470	6936.96	2673.35	-1352.64	-2388.83	40°14'02.712"N	104°54'54.989"W	1.95	
9864.00	91.380	268.690	6935.57	2755.45	-1354.75	-2473.79	40°14'02.691"N	104°54'56.085"W	1.08	
9949.00	90.060	268.100	6934.51	2837.63	-1357.13	-2558.75	40°14'02.668"N	104°54'57.180"W	1.70	
10034.00	90.030	267.480	6934.44	2920.05	-1360.41	-2643.69	40°14'02.635"N	104°54'58.275"W	0.73	
10119.00	90.820	267.620	6933.81	3002.54	-1364.04	-2728.61	40°14'02.599"N	104°54'59.370"W	0.94	
10204.00	90.860	267.770	6932.56	3084.98	-1367.46	-2813.53	40°14'02.565"N	104°55'00.465"W	0.18	
10290.00	90.400	268.400	6931.62	3168.25	-1370.33	-2899.48	40°14'02.537"N	104°55'01.573"W	0.91	
10375.00	90.730	270.380	6930.78	3250.04	-1371.24	-2984.46	40°14'02.528"N	104°55'02.669"W	2.36	
10460.00	89.780	270.400	6930.40	3331.42	-1370.66	-3069.46	40°14'02.533"N	104°55'03.765"W	1.12	
10545.00	90.430	270.480	6930.25	3412.79	-1370.01	-3154.45	40°14'02.540"N	104°55'04.861"W	0.77	
10630.00	89.220	271.670	6930.50	3493.87	-1368.41	-3239.44	40°14'02.555"N	104°55'05.957"W	2.00	
10715.00	89.600	270.910	6931.38	3574.85	-1366.50	-3324.41	40°14'02.574"N	104°55'07.052"W	1.00	
10801.00	91.100	271.280	6930.85	3656.88	-1364.85	-3410.39	40°14'02.590"N	104°55'08.161"W	1.80	
10886.00	91.140	271.140	6929.19	3737.89	-1363.06	-3495.35	40°14'02.608"N	104°55'09.256"W	0.17	
10971.00	90.610	271.660	6927.90	3818.82	-1360.98	-3580.32	40°14'02.628"N	104°55'10.352"W	0.87	
11056.00	90.150	272.590	6927.33	3899.42	-1357.83	-3665.26	40°14'02.659"N	104°55'11.447"W	1.22	
11142.00	89.470	272.950	6927.62	3980.66	-1353.68	-3751.16	40°14'02.700"N	104°55'12.555"W	0.89	
11227.00	89.500	272.800	6928.38	4060.90	-1349.41	-3836.05	40°14'02.742"N	104°55'13.649"W	0.18	
11312.00	89.500	272.340	6929.12	4141.29	-1345.60	-3920.96	40°14'02.780"N	104°55'14.744"W	0.54	
11398.00	90.180	271.840	6929.36	4222.86	-1342.46	-4006.90	40°14'02.811"N	104°55'15.852"W	0.98	
11483.00	90.060	272.000	6929.18	4303.56	-1339.62	-4091.85	40°14'02.839"N	104°55'16.947"W	0.24	
11568.00	89.380	271.770	6929.60	4384.27	-1336.82	-4176.80	40°14'02.866"N	104°55'18.043"W	0.84	
11653.00	88.890	270.750	6930.88	4465.26	-1334.95	-4261.77	40°14'02.884"N	104°55'19.138"W	1.33	
11738.00	88.640	269.800	6932.72	4546.68	-1334.54	-4346.75	40°14'02.888"N	104°55'20.234"W	1.16	
11863.00	90.370	270.100	6933.80	4666.62	-1334.65	-4471.74	40°14'02.887"N	104°55'21.846"W	1.40	LAST BHI MWD+IFR SURVEYS
11931.00	90.370	270.100	6933.36	4731.83	-1334.53	-4539.74	40°14'02.888"N	104°55'22.722"W	0.00	PROJECTION TO BIT

Actual Wellpath Report

HOUSTON 34N-8HZ AWP

Page 7 of 8

REFERENCE WELLPATH IDENTIFICATION

Operator	KERR-MCGEE OIL & GAS ONSHORE LP	Slot	SLOT#33 HOUSTON 34N-8HZ
Area	COLORADO	Well	HOUSTON 34N-8HZ
Field	WELD COUNTY (KERR MCGEE)	Wellbore	HOUSTON 34N-8HZ AWB
Facility	SEC.08-T3N-R67W		

HOLE & CASING SECTIONS - Ref Wellbore: HOUSTON 34N-8HZ AWB Ref Wellpath: HOUSTON 34N-8HZ AWP

String/Diameter	Start MD [ft]	End MD [ft]	Interval [ft]	Start TVD [ft]	End TVD [ft]	Start N/S [ft]	Start E/W [ft]	End N/S [ft]	End E/W [ft]
13.5in Open Hole	17.00	821.00	804.00	17.00	820.97	0.00	0.00	-1.92	-2.10
9.625in Casing Surface	17.00	821.00	804.00	17.00	820.97	0.00	0.00	-1.92	-2.10
8.75in Open Hole	821.00	7522.00	6701.00	820.97	6932.35	-1.92	-2.10	-1371.27	-133.22
7in Casing Intermediate	17.00	7511.00	7494.00	17.00	6931.93	0.00	0.00	-1371.82	-122.24
6.125in Open Hole	7522.00	11931.00	4409.00	6932.35	6933.36	-1371.27	-133.22	-1334.53	-4539.74

WELLPATH COMPOSITION - Ref Wellbore: HOUSTON 34N-8HZ AWB Ref Wellpath: HOUSTON 34N-8HZ AWP

Start MD [ft]	End MD [ft]	Positional Uncertainty Model	Log Name/Comment	Wellbore
17.00	730.00	Generic gyro - continuous (Standard)	MS ENERGY GYRO SURVEYS <117-730>	HOUSTON 34N-8HZ AWB
730.00	7466.00	NaviTrak (IFR)	BHI MWD/ NAVITRAK (IFR) 8.75" HOLE <840-7466>	HOUSTON 34N-8HZ AWB
7466.00	11863.00	NaviTrak (IFR)	BHI MWD/NAVITRAK (IFR) 6.125" HOLE <7563-11863>	HOUSTON 34N-8HZ AWB
11863.00	11931.00	Blind Drilling (std)	Projection to bit	HOUSTON 34N-8HZ AWB

Actual Wellpath Report

HOUSTON 34N-8HZ AWP

Page 8 of 8

REFERENCE WELLPATH IDENTIFICATION

Operator	KERR-MCGEE OIL & GAS ONSHORE LP	Slot	SLOT#33 HOUSTON 34N-8HZ
Area	COLORADO	Well	HOUSTON 34N-8HZ
Field	WELD COUNTY (KERR MCGEE)	Wellbore	HOUSTON 34N-8HZ AWB
Facility	SEC.08-T3N-R67W		

WELLPATH COMMENTS

MD [ft]	Inclination [°]	Azimuth [°]	TVD [ft]	Comment
17.00	0.000	120.170	17.00	TIE-ON
117.00	0.660	120.170	117.00	BEGIN GYRO SURVEYS
730.00	0.550	265.130	729.98	TIE-INTO GYRO SURVEYS
840.00	0.420	256.870	839.97	BEGIN BHI MWD+IFR SURVEYS
7511.00	87.537	272.772	6931.93	7" CASING POINT
11863.00	90.370	270.100	6933.80	LAST BHI MWD+IFR SURVEYS
11931.00	90.370	270.100	6933.36	PROJECTION TO BIT