

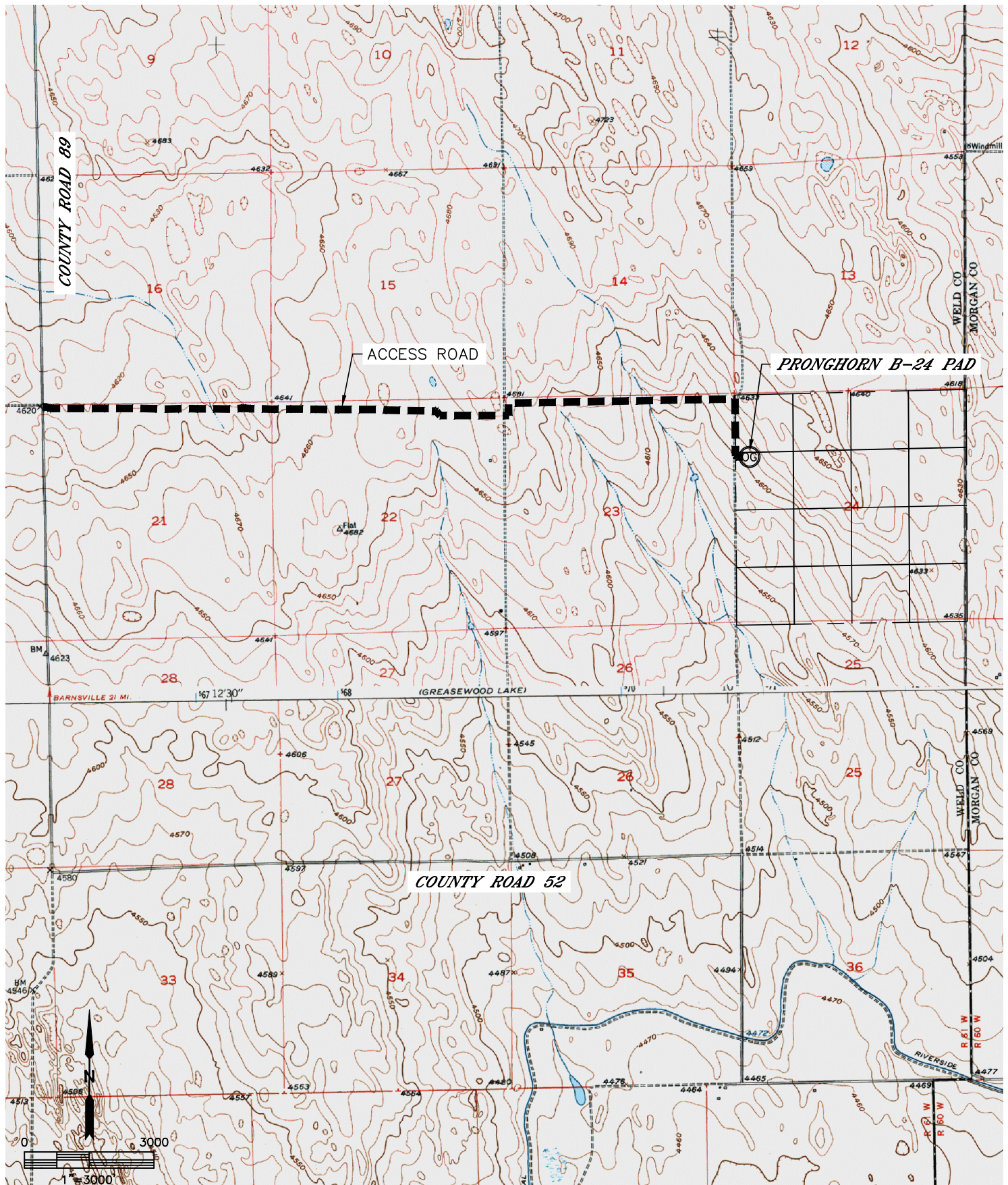


Lat40°, Inc. 1635 Foxtrail Drive, Suite 325 Loveland, CO 970-776-3321

# ACCESS ROAD MAP

PRONGHORN B-24 PAD

SECTION: 24  
TOWNSHIP: 5N  
RANGE: 61W





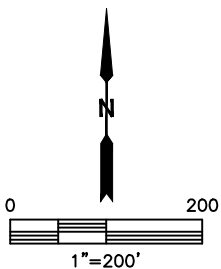


Lat40°, Inc. 1635 Foxtrail Drive, Suite 325 Loveland, CO 970-776-3321

# ACCESS ROAD MAP

PRONGHORN B-24 PAD

SECTION: 24  
TOWNSHIP: 5N  
RANGE: 61W







Lat40°, Inc. 1635 Foxtrail Drive, Suite 325 Loveland, CO 970-776-3321

## ACCESS ROAD MAP

PRONGHORN B-24 PAD

SECTION: 24  
TOWNSHIP: 5N  
RANGE: 61W

EXISTING WELLS:  
NONE

PROPOSED WELLS:  
PRONGHORN 11-41-24HNC  
PRONGHORN C-W-24HNB

### DRIVING DIRECTIONS TO PRONGHORN B-24 PAD

FROM THE INTERSECTION OF COUNTY ROAD 89 AND COUNTY ROAD 52, DRIVE NORTH ON COUNTY ROAD 89 FOR APPROXIMATELY 2.0 MILES TO A FIELD ACCESS ROAD, DRIVE EASTERLY ALONG THE ACCESS ROAD FOR 3.4 MILES TO THE PRONGHORN B-24 PAD SITE.

