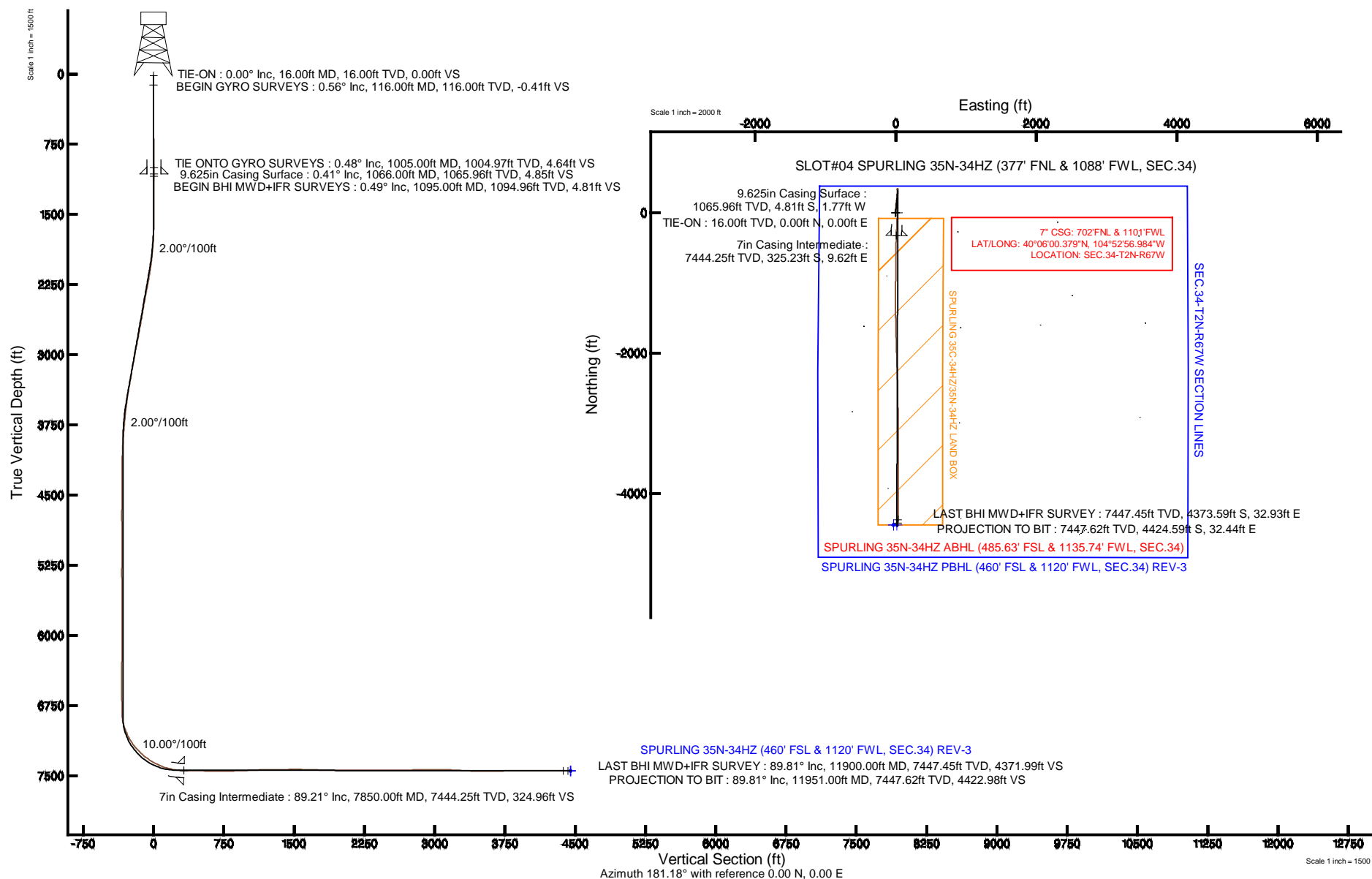


KERR-MCGEE OIL & GAS ONSHORE LP

Location: COLORADO Slot: SLOT#04 SPURLING 35N-34HZ (377' FNL & 1088' FWL, SEC.34)
 Field: WELD COUNTY (KERR MCGEE) Well: SPURLING 35N-34HZ
 Facility: SEC.34-T2N-R67W Wellbore: SPURLING 35N-34HZ PWB

Plot reference wellpath is SPURLING 35N-34HZ (REV-A.0) PWP

True vertical depths are referenced to XTREME 6 (16'RKB) (RKB)	Grid System: NAD83 / Lambert Colorado SP, Northern Zone (501), US feet
Measured depths are referenced to XTREME 6 (16'RKB) (RKB)	North Reference: True north
XTREME 6 (16'RKB) (RKB) to Mean Sea Level: 5029 feet	Scale: True distance
Mean Sea Level to Mud line (At Slot: SLOT#04 SPURLING 35N-34HZ (377' FNL & 1088' FWL, SEC.34)): 0 feet	Depths are in feet
Coordinates are in feet referenced to Slot	Created by: robiale01 on 25/Jun/2014



REFERENCE WELLPATH IDENTIFICATION			
Operator	KERR-MCGEE OIL & GAS ONSHORE LP	Slot	SLOT#04 SPURLING 35N-34HZ (377' FNL & 1088' FWL, SEC.34)
Area	COLORADO	Well	SPURLING 35N-34HZ
Field	WELD COUNTY (KERR MCGEE)	Wellbore	SPURLING 35N-34HZ AWB
Facility	SEC.34-T2N-R67W		

REPORT SETUP INFORMATION			
Projection System	NAD83 / Lambert Colorado SP, Northern Zone (501), US feet	Software System	WellArchitect® 4.0.0
North Reference	True	User	Robiale01
Scale	0.99996	Report Generated	25/Jun/2014 at 14:03
Convergence at slot	n/a	Database/Source file	WellArchitectDB/SPURLING_35N-34HZ_AWB.xml

WELLPATH LOCATION						
	Local coordinates		Grid coordinates		Geographic coordinates	
	North[ft]	East[ft]	Easting[US ft]	Northing[US ft]	Latitude	Longitude
Slot Location	0.00	-89.91	3172728.85	1280239.37	40°06'03.593"N	104°52'57.108"W
Facility Reference Pt			3172818.76	1280239.99	40°06'03.593"N	104°52'55.951"W
Field Reference Pt			3197771.84	1268891.29	40°04'09.600"N	104°47'36.000"W

WELLPATH DATUM			
Calculation method	Minimum curvature	XTREME 6 (16'RKB) (RKB) to Facility Vertical Datum	5029.00ft
Horizontal Reference Pt	Slot	XTREME 6 (16'RKB) (RKB) to Mean Sea Level	5029.00ft
Vertical Reference Pt	XTREME 6 (16'RKB) (RKB)	XTREME 6 (16'RKB) (RKB) to Mud Line at Slot (SLOT#04 SPURLING 35N-34HZ (377' FNL & 1088' FWL, SEC.34))	5029.00ft
MD Reference Pt	XTREME 6 (16'RKB) (RKB)	Section Origin	N 0.00, E 0.00 ft
Field Vertical Reference	Mean Sea Level	Section Azimuth	179.58°

Actual Wellpath Report

SPURLING 35N-34HZ AWP

Page 2 of 6

REFERENCE WELLPATH IDENTIFICATION			
Operator	KERR-MCGEE OIL & GAS ONSHORE LP	Slot	SLOT#04 SPURLING 35N-34HZ (377' FNL & 1088' FWL, SEC.34)
Area	COLORADO	Well	SPURLING 35N-34HZ
Field	WELD COUNTY (KERR MCGEE)	Wellbore	SPURLING 35N-34HZ AWB
Facility	SEC.34-T2N-R67W		

WELLPATH DATA (132 stations) † = interpolated/extrapolated station										
MD [ft]	Inclination [°]	Azimuth [°]	TVD [ft]	Vert Sect [ft]	North [ft]	East [ft]	Latitude	Longitude	DLS [°/100ft]	Comments
0.00†	0.000	33.730	0.00	0.00	0.00	0.00	40°06'03.593"N	104°52'57.108"W	0.00	
16.00	0.000	33.730	16.00	0.00	0.00	0.00	40°06'03.593"N	104°52'57.108"W	0.00	TIE-ON
116.00	0.560	33.730	116.00	-0.40	0.41	0.27	40°06'03.597"N	104°52'57.105"W	0.56	BEGIN GYRO SURVEYS
216.00	0.330	100.470	216.00	-0.75	0.76	0.83	40°06'03.601"N	104°52'57.097"W	0.53	
316.00	0.360	142.600	315.99	-0.45	0.46	1.30	40°06'03.598"N	104°52'57.091"W	0.25	
416.00	0.480	189.810	415.99	0.21	-0.20	1.42	40°06'03.591"N	104°52'57.090"W	0.35	
516.00	0.380	208.100	515.99	0.92	-0.91	1.19	40°06'03.584"N	104°52'57.093"W	0.17	
616.00	0.410	197.540	615.99	1.55	-1.54	0.93	40°06'03.578"N	104°52'57.096"W	0.08	
716.00	0.590	198.920	715.98	2.38	-2.37	0.65	40°06'03.570"N	104°52'57.100"W	0.18	
816.00	0.640	237.310	815.98	3.16	-3.16	0.02	40°06'03.562"N	104°52'57.108"W	0.41	
916.00	0.670	218.970	915.97	3.91	-3.92	-0.82	40°06'03.554"N	104°52'57.119"W	0.21	
1005.00	0.480	219.440	1004.97	4.60	-4.61	-1.39	40°06'03.547"N	104°52'57.126"W	0.21	TIE ONTO GYRO SURVEYS
1095.00	0.490	288.850	1094.96	4.76	-4.78	-1.99	40°06'03.546"N	104°52'57.134"W	0.61	BEGIN BHI MWD+IFR SURVEYS
1159.00	0.370	285.620	1158.96	4.61	-4.63	-2.45	40°06'03.547"N	104°52'57.139"W	0.19	
1250.00	0.620	277.570	1249.96	4.46	-4.49	-3.22	40°06'03.549"N	104°52'57.149"W	0.28	
1341.00	0.820	275.980	1340.95	4.32	-4.35	-4.35	40°06'03.550"N	104°52'57.164"W	0.22	
1433.00	0.860	252.720	1432.94	4.45	-4.49	-5.67	40°06'03.549"N	104°52'57.181"W	0.37	
1522.00	0.930	260.610	1521.93	4.76	-4.81	-7.02	40°06'03.545"N	104°52'57.198"W	0.16	
1612.00	1.720	332.330	1611.91	3.67	-3.73	-8.37	40°06'03.556"N	104°52'57.216"W	1.87	
1703.00	2.340	4.230	1702.86	0.60	-0.67	-8.86	40°06'03.586"N	104°52'57.222"W	1.39	
1794.00	3.920	22.070	1793.72	-4.12	4.07	-7.56	40°06'03.633"N	104°52'57.205"W	2.02	
1885.00	5.380	19.760	1884.42	-11.00	10.97	-4.95	40°06'03.701"N	104°52'57.172"W	1.62	
1976.00	6.750	9.890	1974.91	-20.27	20.25	-2.59	40°06'03.793"N	104°52'57.141"W	1.89	
2067.00	8.080	4.090	2065.15	-31.91	31.90	-1.21	40°06'03.908"N	104°52'57.124"W	1.68	
2157.00	9.610	6.970	2154.07	-45.66	45.66	0.15	40°06'04.044"N	104°52'57.106"W	1.77	
2248.00	10.950	4.960	2243.61	-61.80	61.82	1.82	40°06'04.204"N	104°52'57.085"W	1.52	
2340.00	10.010	359.070	2334.08	-78.50	78.52	2.45	40°06'04.369"N	104°52'57.077"W	1.55	
2431.00	10.650	7.550	2423.61	-94.73	94.76	3.42	40°06'04.529"N	104°52'57.064"W	1.81	
2521.00	9.370	4.000	2512.24	-110.28	110.31	5.03	40°06'04.683"N	104°52'57.043"W	1.58	
2612.00	10.110	7.360	2601.93	-125.57	125.63	6.57	40°06'04.834"N	104°52'57.023"W	1.03	
2703.00	10.770	7.950	2691.42	-141.90	141.97	8.77	40°06'04.996"N	104°52'56.995"W	0.73	
2794.00	9.610	7.640	2780.98	-157.83	157.92	10.95	40°06'05.154"N	104°52'56.967"W	1.28	
2884.00	11.730	6.650	2869.42	-174.35	174.45	13.01	40°06'05.317"N	104°52'56.941"W	2.36	
2976.00	11.050	4.420	2959.61	-192.42	192.53	14.77	40°06'05.496"N	104°52'56.918"W	0.88	
3066.00	10.100	3.020	3048.08	-208.89	209.01	15.85	40°06'05.658"N	104°52'56.904"W	1.09	
3152.00	10.780	5.630	3132.66	-224.42	224.55	17.04	40°06'05.812"N	104°52'56.889"W	0.96	
3237.00	8.950	3.310	3216.40	-238.92	239.06	18.20	40°06'05.955"N	104°52'56.874"W	2.20	
3322.00	10.640	4.380	3300.15	-253.34	253.49	19.18	40°06'06.098"N	104°52'56.861"W	2.00	
3407.00	9.380	2.720	3383.86	-268.07	268.23	20.11	40°06'06.244"N	104°52'56.849"W	1.52	
3492.00	7.930	0.680	3467.89	-280.85	281.01	20.51	40°06'06.370"N	104°52'56.844"W	1.74	
3578.00	6.850	2.660	3553.17	-291.91	292.07	20.82	40°06'06.479"N	104°52'56.840"W	1.29	
3663.00	5.920	1.770	3637.65	-301.35	301.51	21.19	40°06'06.573"N	104°52'56.835"W	1.10	
3748.00	5.030	358.580	3722.26	-309.46	309.62	21.23	40°06'06.653"N	104°52'56.835"W	1.11	
3834.00	4.470	10.820	3807.96	-316.51	316.68	21.77	40°06'06.722"N	104°52'56.828"W	1.34	
3919.00	4.000	9.180	3892.73	-322.68	322.86	22.86	40°06'06.784"N	104°52'56.814"W	0.57	

Actual Wellpath Report

SPURLING 35N-34HZ AWP

Page 3 of 6

REFERENCE WELLPATH IDENTIFICATION			
Operator	KERR-MCGEE OIL & GAS ONSHORE LP	Slot	SLOT#04 SPURLING 35N-34HZ (377' FNL & 1088' FWL, SEC.34)
Area	COLORADO	Well	SPURLING 35N-34HZ
Field	WELD COUNTY (KERR MCGEE)	Wellbore	SPURLING 35N-34HZ AWB
Facility	SEC.34-T2N-R67W		

WELLPATH DATA (132 stations) † = interpolated/extrapolated station										
MD [ft]	Inclination [°]	Azimuth [°]	TVD [ft]	Vert Sect [ft]	North [ft]	East [ft]	Latitude	Longitude	DLS [°/100ft]	Comments
4004.00	3.360	12.490	3977.56	-328.04	328.22	23.87	40°06'06.837"N	104°52'56.801"W	0.79	
4090.00	1.410	8.990	4063.48	-331.54	331.72	24.58	40°06'06.871"N	104°52'56.792"W	2.27	
4175.00	1.090	359.770	4148.46	-333.38	333.57	24.74	40°06'06.889"N	104°52'56.790"W	0.44	
4258.00	0.780	115.870	4231.45	-333.92	334.11	25.25	40°06'06.895"N	104°52'56.783"W	1.92	
4429.00	0.900	95.100	4402.43	-333.27	333.48	27.63	40°06'06.889"N	104°52'56.752"W	0.19	
4597.00	1.430	15.880	4570.41	-335.16	335.38	29.52	40°06'06.907"N	104°52'56.728"W	0.92	
4768.00	0.530	241.700	4741.39	-336.83	337.06	29.41	40°06'06.924"N	104°52'56.730"W	1.08	
4938.00	0.890	248.380	4911.38	-335.99	336.20	27.49	40°06'06.915"N	104°52'56.754"W	0.22	
5107.00	0.930	283.310	5080.36	-335.84	336.03	24.93	40°06'06.914"N	104°52'56.787"W	0.32	
5277.00	1.000	292.040	5250.33	-336.73	336.91	22.22	40°06'06.922"N	104°52'56.822"W	0.10	
5363.00	0.310	271.910	5336.33	-337.03	337.20	21.29	40°06'06.925"N	104°52'56.834"W	0.83	
5448.00	1.880	121.210	5421.31	-336.31	336.48	22.25	40°06'06.918"N	104°52'56.822"W	2.54	
5618.00	1.300	112.700	5591.25	-334.09	334.29	26.42	40°06'06.897"N	104°52'56.768"W	0.37	
5789.00	0.430	97.610	5762.23	-333.24	333.46	28.84	40°06'06.888"N	104°52'56.737"W	0.52	
5960.00	0.390	62.200	5933.22	-333.42	333.64	29.99	40°06'06.890"N	104°52'56.722"W	0.15	
6130.00	0.580	341.140	6103.22	-334.50	334.73	30.23	40°06'06.901"N	104°52'56.719"W	0.38	
6301.00	1.100	321.720	6274.20	-336.61	336.84	28.93	40°06'06.922"N	104°52'56.736"W	0.34	
6471.00	1.050	290.190	6444.17	-338.45	338.65	26.46	40°06'06.940"N	104°52'56.768"W	0.34	
6642.00	0.710	176.850	6615.16	-337.94	338.14	25.04	40°06'06.935"N	104°52'56.786"W	0.87	
6813.00	0.900	139.510	6786.14	-335.86	336.06	25.97	40°06'06.914"N	104°52'56.774"W	0.32	
6855.00	1.260	159.740	6828.14	-335.17	335.37	26.35	40°06'06.907"N	104°52'56.769"W	1.24	
6898.00	5.420	170.010	6871.05	-332.72	332.93	26.86	40°06'06.883"N	104°52'56.762"W	9.74	
6940.00	10.280	172.030	6912.65	-327.05	327.26	27.73	40°06'06.827"N	104°52'56.751"W	11.59	
6983.00	15.340	173.630	6954.56	-317.58	317.80	28.89	40°06'06.734"N	104°52'56.736"W	11.80	
7025.00	19.230	174.770	6994.66	-305.16	305.39	30.14	40°06'06.611"N	104°52'56.720"W	9.30	
7068.00	22.860	176.950	7034.79	-289.75	289.99	31.23	40°06'06.459"N	104°52'56.706"W	8.63	
7111.00	26.000	179.720	7073.93	-271.98	272.22	31.72	40°06'06.283"N	104°52'56.700"W	7.77	
7153.00	30.240	180.530	7110.97	-252.19	252.43	31.67	40°06'06.088"N	104°52'56.700"W	10.14	
7196.00	35.050	179.980	7147.16	-229.00	229.24	31.57	40°06'05.858"N	104°52'56.702"W	11.21	
7238.00	38.720	180.260	7180.75	-203.80	204.04	31.52	40°06'05.609"N	104°52'56.702"W	8.75	
7281.00	42.490	179.760	7213.39	-175.82	176.06	31.52	40°06'05.333"N	104°52'56.702"W	8.80	
7323.00	44.570	180.810	7243.84	-146.90	147.13	31.37	40°06'05.047"N	104°52'56.704"W	5.24	
7366.00	48.000	180.530	7273.55	-115.83	116.06	31.01	40°06'04.740"N	104°52'56.709"W	7.99	
7409.00	51.910	182.230	7301.21	-82.94	83.16	30.20	40°06'04.415"N	104°52'56.719"W	9.58	
7451.00	56.880	183.050	7325.66	-48.85	49.06	28.62	40°06'04.078"N	104°52'56.740"W	11.94	
7494.00	60.510	182.750	7348.00	-12.18	12.37	26.76	40°06'03.715"N	104°52'56.764"W	8.46	
7536.00	61.290	185.150	7368.43	24.41	-24.23	24.23	40°06'03.354"N	104°52'56.796"W	5.33	
7578.00	64.810	183.850	7387.46	61.71	-61.55	21.30	40°06'02.985"N	104°52'56.834"W	8.82	
7621.00	69.580	182.750	7404.12	101.25	-101.11	19.03	40°06'02.594"N	104°52'56.863"W	11.34	
7664.00	74.900	181.870	7417.23	142.14	-142.01	17.38	40°06'02.190"N	104°52'56.884"W	12.52	
7706.00	76.840	183.240	7427.49	182.81	-182.70	15.57	40°06'01.788"N	104°52'56.908"W	5.60	
7749.00	79.800	182.670	7436.19	224.84	-224.75	13.40	40°06'01.372"N	104°52'56.936"W	7.01	
7812.00	87.490	181.790	7443.16	287.34	-287.27	10.96	40°06'00.754"N	104°52'56.967"W	12.28	
7850.00†	89.208	182.273	7444.25	325.29	-325.23	9.62	40°06'00.379"N	104°52'56.984"W	4.70	7" CASING POINT
7860.00	89.660	182.400	7444.35	335.28	-335.22	9.21	40°06'00.280"N	104°52'56.989"W	4.70	

Actual Wellpath Report

SPURLING 35N-34HZ AWP

Page 4 of 6

REFERENCE WELLPATH IDENTIFICATION

Operator	KERR-MCGEE OIL & GAS ONSHORE LP	Slot	SLOT#04 SPURLING 35N-34HZ (377' FNL & 1088' FWL, SEC.34)
Area	COLORADO	Well	SPURLING 35N-34HZ
Field	WELD COUNTY (KERR MCGEE)	Wellbore	SPURLING 35N-34HZ AWB
Facility	SEC.34-T2N-R67W		

WELLPATH DATA (132 stations)

MD [ft]	Inclination [°]	Azimuth [°]	TVD [ft]	Vert Sect [ft]	North [ft]	East [ft]	Latitude	Longitude	DLS [°/100ft]	Comments
7927.00	89.280	181.960	7444.97	402.20	-402.17	6.66	40°05'59.619"N	104°52'57.022"W	0.87	
8012.00	88.500	181.410	7446.62	487.13	-487.11	4.16	40°05'58.779"N	104°52'57.054"W	1.12	
8098.00	88.980	181.460	7448.51	573.06	-573.06	2.01	40°05'57.930"N	104°52'57.082"W	0.56	
8183.00	90.800	180.360	7448.67	658.04	-658.05	0.66	40°05'57.090"N	104°52'57.100"W	2.50	
8268.00	89.040	180.030	7448.79	743.03	-743.04	0.37	40°05'56.250"N	104°52'57.103"W	2.11	
8354.00	91.230	180.310	7448.59	829.02	-829.04	0.12	40°05'55.400"N	104°52'57.107"W	2.57	
8439.00	91.840	180.260	7446.31	913.98	-914.01	-0.31	40°05'54.561"N	104°52'57.112"W	0.72	
8524.00	92.250	180.120	7443.28	998.92	-998.95	-0.59	40°05'53.721"N	104°52'57.116"W	0.51	
8610.00	92.750	180.280	7439.53	1084.83	-1084.87	-0.89	40°05'52.872"N	104°52'57.119"W	0.61	
8695.00	92.230	180.690	7435.83	1169.74	-1169.79	-1.61	40°05'52.033"N	104°52'57.129"W	0.78	
8780.00	90.770	179.710	7433.61	1254.70	-1254.75	-1.90	40°05'51.193"N	104°52'57.132"W	2.07	
8866.00	90.030	179.720	7433.01	1340.70	-1340.75	-1.48	40°05'50.344"N	104°52'57.127"W	0.86	
8951.00	90.150	179.740	7432.87	1425.70	-1425.75	-1.08	40°05'49.504"N	104°52'57.122"W	0.14	
9036.00	90.180	179.310	7432.63	1510.70	-1510.74	-0.37	40°05'48.664"N	104°52'57.113"W	0.51	
9122.00	89.320	179.150	7433.01	1596.70	-1596.73	0.79	40°05'47.814"N	104°52'57.098"W	1.02	
9207.00	87.980	178.260	7435.01	1681.66	-1681.69	2.71	40°05'46.974"N	104°52'57.073"W	1.89	
9293.00	87.840	177.700	7438.14	1767.57	-1767.58	5.73	40°05'46.126"N	104°52'57.034"W	0.67	
9378.00	88.640	178.470	7440.75	1852.50	-1852.49	8.57	40°05'45.286"N	104°52'56.998"W	1.31	
9463.00	90.610	178.340	7441.31	1937.48	-1937.45	10.94	40°05'44.447"N	104°52'56.967"W	2.32	
9548.00	91.240	178.020	7439.94	2022.44	-2022.39	13.64	40°05'43.607"N	104°52'56.933"W	0.83	
9634.00	90.370	178.110	7438.73	2108.40	-2108.33	16.54	40°05'42.758"N	104°52'56.895"W	1.02	
9719.00	89.900	178.010	7438.53	2193.37	-2193.29	19.42	40°05'41.919"N	104°52'56.858"W	0.57	
9804.00	89.160	177.850	7439.23	2278.33	-2278.23	22.49	40°05'41.079"N	104°52'56.819"W	0.89	
9975.00	89.960	178.660	7440.54	2449.28	-2449.14	27.70	40°05'39.390"N	104°52'56.752"W	0.67	
10145.00	90.460	179.260	7439.92	2619.26	-2619.11	30.78	40°05'37.711"N	104°52'56.712"W	0.46	
10314.00	91.450	179.330	7437.10	2788.24	-2788.07	32.86	40°05'36.041"N	104°52'56.685"W	0.59	
10484.00	90.740	180.190	7433.85	2958.20	-2958.04	33.57	40°05'34.361"N	104°52'56.676"W	0.66	
10655.00	87.900	179.450	7435.88	3129.17	-3129.00	34.11	40°05'32.672"N	104°52'56.669"W	1.72	
10825.00	86.740	179.890	7443.83	3298.98	-3298.81	35.09	40°05'30.994"N	104°52'56.657"W	0.73	
10995.00	89.040	179.170	7450.09	3468.85	-3468.68	36.48	40°05'29.315"N	104°52'56.639"W	1.42	
11080.00	90.800	179.820	7450.21	3553.85	-3553.67	37.23	40°05'28.475"N	104°52'56.629"W	2.21	
11165.00	90.000	180.380	7449.61	3638.84	-3638.67	37.08	40°05'27.635"N	104°52'56.631"W	1.15	
11250.00	91.780	180.780	7448.29	3723.82	-3723.65	36.22	40°05'26.795"N	104°52'56.642"W	2.15	
11335.00	90.400	179.920	7446.68	3808.79	-3808.63	35.70	40°05'25.956"N	104°52'56.649"W	1.91	
11421.00	90.490	180.670	7446.01	3894.78	-3894.63	35.26	40°05'25.106"N	104°52'56.654"W	0.88	
11506.00	90.490	180.960	7445.28	3979.76	-3979.61	34.05	40°05'24.266"N	104°52'56.670"W	0.34	
11591.00	89.470	179.620	7445.31	4064.75	-4064.61	33.62	40°05'23.426"N	104°52'56.675"W	1.98	
11677.00	89.530	179.590	7446.06	4150.74	-4150.60	34.21	40°05'22.576"N	104°52'56.668"W	0.08	
11762.00	89.660	180.300	7446.66	4235.74	-4235.60	34.30	40°05'21.736"N	104°52'56.667"W	0.85	
11848.00	89.630	180.740	7447.20	4321.73	-4321.60	33.52	40°05'20.886"N	104°52'56.677"W	0.51	
11900.00	89.810	180.550	7447.45	4373.72	-4373.59	32.93	40°05'20.372"N	104°52'56.684"W	0.50	LAST BHI MWD+IFR SURVEY
11951.00	89.810	180.550	7447.62	4424.71	-4424.59	32.44	40°05'19.869"N	104°52'56.691"W	0.00	PROJECTION TO BIT

REFERENCE WELLPATH IDENTIFICATION			
Operator	KERR-MCGEE OIL & GAS ONSHORE LP	Slot	SLOT#04 SPURLING 35N-34HZ (377' FNL & 1088' FWL, SEC.34)
Area	COLORADO	Well	SPURLING 35N-34HZ
Field	WELD COUNTY (KERR MCGEE)	Wellbore	SPURLING 35N-34HZ AWB
Facility	SEC.34-T2N-R67W		

HOLE & CASING SECTIONS - Ref Wellbore: SPURLING 35N-34HZ AWB Ref Wellpath: SPURLING 35N-34HZ AWP									
String/Diameter	Start MD [ft]	End MD [ft]	Interval [ft]	Start TVD [ft]	End TVD [ft]	Start N/S [ft]	Start E/W [ft]	End N/S [ft]	End E/W [ft]
13.5in Open Hole	16.00	1066.00	1050.00	16.00	1065.96	0.00	0.00	-4.81	-1.77
9.625in Casing Surface	16.00	1066.00	1050.00	16.00	1065.96	0.00	0.00	-4.81	-1.77
8.75in Open Hole	1066.00	7860.00	6794.00	1065.96	7444.35	-4.81	-1.77	-335.22	9.21
7in Casing Intermediate	16.00	7850.00	7834.00	16.00	7444.25	0.00	0.00	-325.23	9.62
6.125in Open Hole	7860.00	11951.00	4091.00	7444.35	7447.62	-335.22	9.21	-4424.59	32.44

TARGETS									
Name	MD [ft]	TVD [ft]	North [ft]	East [ft]	Grid East [US ft]	Grid North [US ft]	Latitude	Longitude	Shape
SEC.34-T2N-R47W HARD LINES (460' SETBACKS)		5029.00	0.00	89.83	3172818.68	1280239.99	40°06'03.593"N	104°52'55.952"W	polygon
SEC.34-T2N-R67W SECTION LINES		5029.00	0.00	89.83	3172818.68	1280239.99	40°06'03.593"N	104°52'55.952"W	polygon
SPURLING 35N-34HZ (460' FSL & 1070' FWL, SEC.34) REV-2		7447.00	-4450.22	-33.30	3172726.54	1275789.21	40°05'19.615"N	104°52'57.536"W	point
SPURLING 35N-34HZ (460' FSL & 1120' FWL, SEC.34) REV-3		7447.00	-4450.22	16.70	3172776.54	1275789.56	40°05'19.615"N	104°52'56.893"W	point
SPURLING 35N-34HZ (460' FSL & 1070' FWL, SEC.34) REV-1		7448.00	-4450.22	-33.30	3172726.55	1275789.21	40°05'19.615"N	104°52'57.536"W	point
SPURLING 35C-34HZ/35N-34HZ LAND BOX		7700.00	0.00	29.92	3172758.77	1280239.57	40°06'03.593"N	104°52'56.723"W	polygon

WELLPATH COMPOSITION - Ref Wellbore: SPURLING 35N-34HZ AWB Ref Wellpath: SPURLING 35N-34HZ AWP				
Start MD [ft]	End MD [ft]	Positional Uncertainty Model	Log Name/Comment	Wellbore
16.00	1005.00	Generic gyro - continuous (Standard)	MS GYRODATA SURVEYS <116-1005>	SPURLING 35N-34HZ AWB
1005.00	7860.00	NaviTrak (MAGCORR,IFR)	BHI NAVITRAK MWD+IFR SURVEYS 8 3/4" HOLE <1095-7860>	SPURLING 35N-34HZ AWB
7860.00	11900.00	NaviTrak (MAGCORR,IFR)	BHI NAVITRAK MWD+IFR SURVEYS 6 1/8" <7927-11900>	SPURLING 35N-34HZ AWB
11900.00	11951.00	Blind Drilling (std)	Projection to bit	SPURLING 35N-34HZ AWB

REFERENCE WELLPATH IDENTIFICATION				
Operator	KERR-MCGEE OIL & GAS ONSHORE LP	Slot	SLOT#04 SPURLING 35N-34HZ (377' FNL & 1088' FWL, SEC.34)	
Area	COLORADO	Well	SPURLING 35N-34HZ	
Field	WELD COUNTY (KERR MCGEE)	Wellbore	SPURLING 35N-34HZ AWB	
Facility	SEC.34-T2N-R67W			

WELLPATH COMMENTS				
MD [ft]	Inclination [°]	Azimuth [°]	TVD [ft]	Comment
16.00	0.000	33.730	16.00	TIE-ON
116.00	0.560	33.730	116.00	BEGIN GYRO SURVEYS
1005.00	0.480	219.440	1004.97	TIE ONTO GYRO SURVEYS
1095.00	0.490	288.850	1094.96	BEGIN BHI MWD+IFR SURVEYS
7850.00	89.208	182.273	7444.25	7" CASING POINT
11900.00	89.810	180.550	7447.45	LAST BHI MWD+IFR SURVEY
11951.00	89.810	180.550	7447.62	PROJECTION TO BIT