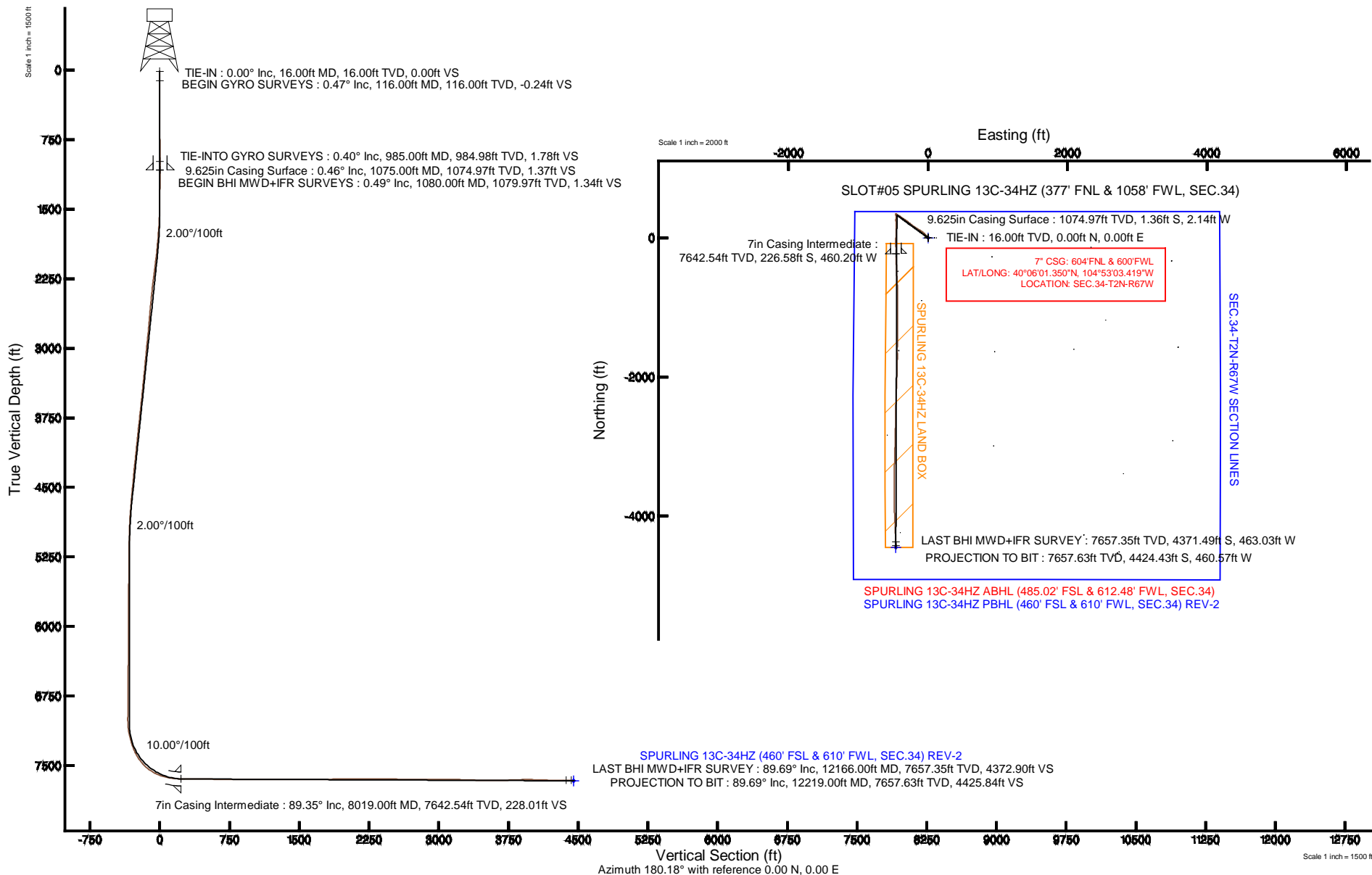


KERR-MCGEE OIL & GAS ONSHORE LP

Location: COLORADO Slot: SLOT#05 SPURLING 13C-34HZ (377' FNL & 1058' FWL, SEC.34)
 Field: WELD COUNTY (KERR MCGEE) Well: SPURLING 13C-34HZ
 Facility: SEC.34-T2N-R67W Wellbore: SPURLING 13C-34HZ PWB

Plot reference wellpath is SPURLING 13C-34HZ (REV-A.0) PWP

True vertical depths are referenced to XTREME 6 (16'RKB) (RKB)	Grid System: NAD83 / Lambert Colorado SP, Northern Zone (501), US feet
Measured depths are referenced to XTREME 6 (16'RKB) (RKB)	North Reference: True north
XTREME 6 (16'RKB) (RKB) to Mean Sea Level: 5029 feet	Scale: True distance
Mean Sea Level to Mud line (At Slot: SLOT#05 SPURLING 13C-34HZ (377' FNL & 1058' FWL, SEC.34)): 0 feet	Depths are in feet
Coordinates are in feet referenced to Slot	Created by: robale01 on 25/Jun/2014



Actual Wellpath Report

SPURLING 13C-34HZ AWP

Page 1 of 6

REFERENCE WELLPATH IDENTIFICATION

Operator	KERR-MCGEE OIL & GAS ONSHORE LP	Slot	SLOT#05 SPURLING 13C-34HZ (377' FNL & 1058' FWL, SEC.34)
Area	COLORADO	Well	SPURLING 13C-34HZ
Field	WELD COUNTY (KERR MCGEE)	Wellbore	SPURLING 13C-34HZ AWP
Facility	SEC.34-T2N-R67W		

REPORT SETUP INFORMATION

Projection System	NAD83 / Lambert Colorado SP, Northern Zone (501), US feet	Software System	WellArchitect® 4.0.0
North Reference	True	User	Robiale01
Scale	0.99996	Report Generated	25/Jun/2014 at 15:53
Convergence at slot	n/a	Database/Source file	WellArchitectDB/SPURLING_13C-34HZ_AWP.xml

WELLPATH LOCATION

	Local coordinates		Grid coordinates		Geographic coordinates	
	North[ft]	East[ft]	Easting[US ft]	Northing[US ft]	Latitude	Longitude
Slot Location	-0.40	-120.14	3172698.63	1280238.75	40°06'03.589"N	104°52'57.497"W
Facility Reference Pt			3172818.76	1280239.99	40°06'03.593"N	104°52'55.951"W
Field Reference Pt			3197771.84	1268891.29	40°04'09.600"N	104°47'36.000"W

WELLPATH DATUM

Calculation method	Minimum curvature	XTREME 6 (16'RKB) (RKB) to Facility Vertical Datum	5029.00ft
Horizontal Reference Pt	Slot	XTREME 6 (16'RKB) (RKB) to Mean Sea Level	5029.00ft
Vertical Reference Pt	XTREME 6 (16'RKB) (RKB)	XTREME 6 (16'RKB) (RKB) to Mud Line at Slot (SLOT#05 SPURLING 13C-34HZ (377' FNL & 1058' FWL, SEC.34))	5029.00ft
MD Reference Pt	XTREME 6 (16'RKB) (RKB)	Section Origin	N 0.00, E 0.00 ft
Field Vertical Reference	Mean Sea Level	Section Azimuth	185.94°

REFERENCE WELLPATH IDENTIFICATION

Operator	KERR-MCGEE OIL & GAS ONSHORE LP	Slot	SLOT#05 SPURLING 13C-34HZ (377' FNL & 1058' FWL, SEC.34)
Area	COLORADO	Well	SPURLING 13C-34HZ
Field	WELD COUNTY (KERR MCGEE)	Wellbore	SPURLING 13C-34HZ AWP
Facility	SEC.34-T2N-R67W		

WELLPATH DATA (108 stations) † = interpolated/extrapolated station

MD [ft]	Inclination [°]	Azimuth [°]	TVD [ft]	Vert Sect [ft]	North [ft]	East [ft]	Latitude	Longitude	DLS [°/100ft]	Comments
0.00†	0.000	305.550	0.00	0.00	0.00	0.00	40°06'03.589"N	104°52'57.497"W	0.00	
16.00	0.000	305.550	16.00	0.00	0.00	0.00	40°06'03.589"N	104°52'57.497"W	0.00	TIE-IN
116.00	0.470	305.550	116.00	-0.20	0.24	-0.33	40°06'03.591"N	104°52'57.501"W	0.47	BEGIN GYRO SURVEYS
216.00	0.440	302.060	216.00	-0.57	0.68	-0.99	40°06'03.596"N	104°52'57.510"W	0.04	
316.00	0.400	289.360	315.99	-0.82	1.00	-1.65	40°06'03.599"N	104°52'57.518"W	0.10	
416.00	0.420	255.470	415.99	-0.78	1.02	-2.33	40°06'03.599"N	104°52'57.527"W	0.24	
516.00	0.250	256.290	515.99	-0.58	0.88	-2.90	40°06'03.598"N	104°52'57.534"W	0.17	
616.00	0.450	208.000	615.99	-0.14	0.48	-3.29	40°06'03.594"N	104°52'57.539"W	0.34	
716.00	0.500	170.630	715.98	0.65	-0.30	-3.41	40°06'03.586"N	104°52'57.541"W	0.31	
816.00	0.510	155.350	815.98	1.45	-1.13	-3.15	40°06'03.578"N	104°52'57.538"W	0.13	
916.00	0.440	122.120	915.98	2.00	-1.74	-2.64	40°06'03.572"N	104°52'57.531"W	0.28	
985.00	0.400	64.990	984.98	2.00	-1.78	-2.20	40°06'03.571"N	104°52'57.525"W	0.58	TIE-INTO GYRO SURVEYS
1080.00	0.490	318.840	1079.97	1.55	-1.33	-2.16	40°06'03.576"N	104°52'57.525"W	0.75	BEGIN BHI MWD+IFR SURVEYS
1157.00	0.160	322.310	1156.97	1.25	-1.00	-2.45	40°06'03.579"N	104°52'57.528"W	0.43	
1250.00	0.280	315.170	1249.97	1.01	-0.74	-2.69	40°06'03.582"N	104°52'57.532"W	0.13	
1342.00	0.400	301.040	1341.97	0.73	-0.41	-3.12	40°06'03.585"N	104°52'57.537"W	0.16	
1433.00	0.410	333.730	1432.97	0.32	0.05	-3.54	40°06'03.589"N	104°52'57.543"W	0.25	
1523.00	1.880	345.870	1522.95	-1.34	1.77	-4.04	40°06'03.606"N	104°52'57.549"W	1.65	
1613.00	3.250	338.870	1612.86	-5.00	5.58	-5.32	40°06'03.644"N	104°52'57.565"W	1.56	
1704.00	4.550	326.070	1703.64	-10.06	10.98	-8.26	40°06'03.697"N	104°52'57.603"W	1.71	
1795.00	5.860	320.130	1794.27	-16.07	17.54	-13.26	40°06'03.762"N	104°52'57.668"W	1.55	
1886.00	7.570	314.890	1884.64	-23.08	25.34	-20.48	40°06'03.839"N	104°52'57.761"W	1.99	
1977.00	8.740	312.670	1974.72	-30.98	34.25	-29.81	40°06'03.927"N	104°52'57.881"W	1.33	
2067.00	10.190	319.100	2063.49	-40.52	44.91	-40.05	40°06'04.033"N	104°52'58.012"W	1.99	
2158.00	9.710	318.670	2153.13	-51.23	56.75	-50.39	40°06'04.150"N	104°52'58.145"W	0.53	
2249.00	10.850	308.770	2242.67	-61.08	67.88	-62.14	40°06'04.260"N	104°52'58.297"W	2.31	
2431.00	10.230	304.960	2421.60	-78.21	87.87	-88.74	40°06'04.457"N	104°52'58.639"W	0.51	
2613.00	9.700	303.060	2600.85	-93.04	105.49	-114.84	40°06'04.631"N	104°52'58.975"W	0.34	
2794.00	9.010	300.360	2779.45	-105.84	120.97	-139.85	40°06'04.784"N	104°52'59.297"W	0.45	
2965.00	10.480	304.620	2947.98	-118.84	136.58	-164.20	40°06'04.939"N	104°52'59.610"W	0.96	
3135.00	9.420	302.960	3115.42	-132.58	152.93	-188.60	40°06'05.100"N	104°52'59.924"W	0.65	
3306.00	10.230	304.850	3283.91	-146.28	169.22	-212.80	40°06'05.261"N	104°53'00.235"W	0.51	
3476.00	10.120	303.770	3451.24	-160.55	186.15	-237.60	40°06'05.429"N	104°53'00.555"W	0.13	
3647.00	9.710	308.570	3619.68	-175.34	203.49	-261.37	40°06'05.600"N	104°53'00.860"W	0.54	
3817.00	10.230	309.670	3787.12	-191.45	222.07	-284.20	40°06'05.783"N	104°53'01.154"W	0.33	
3986.00	10.120	303.110	3953.46	-206.56	239.76	-308.18	40°06'05.958"N	104°53'01.463"W	0.69	
4156.00	9.840	306.760	4120.89	-220.82	256.61	-332.33	40°06'06.125"N	104°53'01.774"W	0.41	
4325.00	10.900	303.700	4287.13	-235.66	274.12	-357.20	40°06'06.298"N	104°53'02.094"W	0.71	
4495.00	8.820	301.650	4454.61	-248.80	289.88	-381.67	40°06'06.454"N	104°53'02.409"W	1.24	
4580.00	9.850	304.420	4538.49	-255.10	297.41	-393.21	40°06'06.528"N	104°53'02.557"W	1.32	
4665.00	9.240	304.940	4622.31	-261.87	305.43	-404.80	40°06'06.607"N	104°53'02.706"W	0.72	
4749.00	8.830	303.720	4705.27	-268.15	312.87	-415.69	40°06'06.681"N	104°53'02.846"W	0.54	
4834.00	7.600	300.250	4789.39	-273.50	319.32	-425.98	40°06'06.745"N	104°53'02.979"W	1.56	
4919.00	5.900	295.700	4873.80	-277.29	324.05	-434.77	40°06'06.791"N	104°53'03.092"W	2.10	
5005.00	5.060	287.360	4959.41	-279.54	327.10	-442.37	40°06'06.821"N	104°53'03.190"W	1.34	

REFERENCE WELLPATH IDENTIFICATION

Operator	KERR-MCGEE OIL & GAS ONSHORE LP	Slot	SLOT#05 SPURLING 13C-34HZ (377' FNL & 1058' FWL, SEC.34)
Area	COLORADO	Well	SPURLING 13C-34HZ
Field	WELD COUNTY (KERR MCGEE)	Wellbore	SPURLING 13C-34HZ AWB
Facility	SEC.34-T2N-R67W		

WELLPATH DATA (108 stations) † = interpolated/extrapolated station

MD [ft]	Inclination [°]	Azimuth [°]	TVD [ft]	Vert Sect [ft]	North [ft]	East [ft]	Latitude	Longitude	DLS [°/100ft]	Comments
5090.00	3.290	297.800	5044.18	-281.19	329.35	-448.11	40°06'06.844"N	104°53'03.264"W	2.26	
5175.00	1.630	315.620	5129.10	-282.87	331.35	-451.11	40°06'06.863"N	104°53'03.302"W	2.13	
5260.00	0.460	332.290	5214.09	-283.92	332.52	-452.12	40°06'06.875"N	104°53'03.315"W	1.41	
5431.00	0.500	0.800	5385.08	-285.24	333.87	-452.42	40°06'06.888"N	104°53'03.319"W	0.14	
5687.00	0.590	320.950	5641.07	-287.28	336.01	-453.24	40°06'06.909"N	104°53'03.330"W	0.15	
5942.00	1.080	302.030	5896.04	-289.27	338.31	-456.10	40°06'06.932"N	104°53'03.367"W	0.22	
6198.00	0.210	162.460	6152.03	-289.90	339.14	-458.01	40°06'06.940"N	104°53'03.391"W	0.49	
6454.00	1.070	307.160	6408.02	-290.71	340.14	-459.77	40°06'06.950"N	104°53'03.414"W	0.49	
6709.00	1.230	318.240	6662.96	-293.78	343.62	-463.49	40°06'06.985"N	104°53'03.462"W	0.11	
6880.00	0.380	95.390	6833.95	-295.02	344.93	-464.15	40°06'06.998"N	104°53'03.470"W	0.90	
7049.00	0.330	342.460	7002.95	-295.47	345.34	-463.74	40°06'07.002"N	104°53'03.465"W	0.35	
7092.00	2.440	172.410	7045.94	-294.70	344.55	-463.65	40°06'06.994"N	104°53'03.464"W	6.43	
7135.00	6.320	179.990	7088.81	-291.45	341.28	-463.53	40°06'06.962"N	104°53'03.462"W	9.10	
7177.00	8.450	177.810	7130.46	-286.10	335.88	-463.41	40°06'06.908"N	104°53'03.461"W	5.11	
7220.00	12.200	172.530	7172.75	-278.55	328.22	-462.70	40°06'06.832"N	104°53'03.451"W	8.99	
7262.00	15.210	175.270	7213.55	-268.81	318.32	-461.67	40°06'06.735"N	104°53'03.438"W	7.33	
7305.00	16.870	175.050	7254.88	-257.14	306.49	-460.67	40°06'06.618"N	104°53'03.425"W	3.86	
7347.00	19.870	183.070	7294.74	-244.02	293.28	-460.52	40°06'06.487"N	104°53'03.423"W	9.32	
7390.00	24.780	184.470	7334.50	-227.71	276.99	-461.62	40°06'06.326"N	104°53'03.437"W	11.48	
7432.00	28.420	180.110	7372.06	-208.96	258.21	-462.32	40°06'06.141"N	104°53'03.447"W	9.83	
7475.00	31.460	177.570	7409.31	-187.67	236.76	-461.87	40°06'05.929"N	104°53'03.441"W	7.66	
7518.00	35.950	177.110	7445.08	-164.09	212.94	-460.76	40°06'05.693"N	104°53'03.426"W	10.46	
7560.00	40.610	178.400	7478.04	-138.34	186.94	-459.75	40°06'05.436"N	104°53'03.413"W	11.26	
7603.00	46.840	179.670	7509.10	-108.85	157.24	-459.27	40°06'05.143"N	104°53'03.407"W	14.63	
7646.00	52.580	180.310	7536.89	-76.24	124.46	-459.27	40°06'04.819"N	104°53'03.407"W	13.40	
7688.00	58.010	181.640	7560.80	-41.85	89.95	-459.87	40°06'04.478"N	104°53'03.415"W	13.19	
7731.00	63.800	181.740	7581.70	-4.40	52.41	-460.98	40°06'04.107"N	104°53'03.429"W	13.47	
7773.00	68.100	181.150	7598.81	33.83	14.07	-461.94	40°06'03.728"N	104°53'03.442"W	10.32	
7815.00	73.070	180.160	7612.77	73.26	-25.52	-462.39	40°06'03.337"N	104°53'03.447"W	12.04	
7858.00	76.710	179.930	7623.97	114.55	-67.03	-462.42	40°06'02.927"N	104°53'03.448"W	8.48	
7901.00	80.490	179.980	7632.47	156.46	-109.17	-462.39	40°06'02.510"N	104°53'03.447"W	8.79	
7944.00	83.520	179.040	7638.45	198.77	-151.75	-462.03	40°06'02.089"N	104°53'03.443"W	7.37	
7988.00	87.810	178.380	7641.78	242.28	-195.60	-461.04	40°06'01.656"N	104°53'03.430"W	9.86	
8019.00†	89.353	178.532	7642.54	273.01	-226.58	-460.20	40°06'01.350"N	104°53'03.419"W	5.00	7" CASING POINT
8035.00	90.150	178.610	7642.61	288.88	-242.57	-459.80	40°06'01.192"N	104°53'03.414"W	5.00	
8098.00	90.180	178.240	7642.43	351.33	-305.55	-458.07	40°06'00.569"N	104°53'03.392"W	0.59	
8181.00	89.870	178.060	7642.40	433.57	-388.51	-455.39	40°05'59.750"N	104°53'03.357"W	0.43	
8266.00	88.380	177.690	7643.69	517.71	-473.44	-452.24	40°05'58.910"N	104°53'03.317"W	1.81	
8351.00	88.200	177.340	7646.23	601.76	-558.32	-448.56	40°05'58.072"N	104°53'03.269"W	0.46	
8435.00	89.160	176.330	7648.17	684.68	-642.16	-443.92	40°05'57.243"N	104°53'03.209"W	1.66	
8605.00	90.030	179.630	7649.37	853.01	-812.03	-437.93	40°05'55.564"N	104°53'03.132"W	2.01	
8775.00	89.500	179.730	7650.07	1021.99	-982.02	-436.98	40°05'53.884"N	104°53'03.120"W	0.32	
8944.00	90.150	180.350	7650.58	1190.09	-1151.02	-437.10	40°05'52.214"N	104°53'03.122"W	0.53	
9114.00	90.030	180.280	7650.31	1359.27	-1321.02	-438.03	40°05'50.534"N	104°53'03.134"W	0.08	
9285.00	90.740	181.490	7649.17	1529.60	-1491.99	-440.67	40°05'48.845"N	104°53'03.168"W	0.82	

REFERENCE WELLPATH IDENTIFICATION

Operator	KERR-MCGEE OIL & GAS ONSHORE LP	Slot	SLOT#05 SPURLING 13C-34HZ (377' FNL & 1058' FWL, SEC.34)
Area	COLORADO	Well	SPURLING 13C-34HZ
Field	WELD COUNTY (KERR MCGEE)	Wellbore	SPURLING 13C-34HZ AWB
Facility	SEC.34-T2N-R67W		

WELLPATH DATA (108 stations)

MD [ft]	Inclination [°]	Azimuth [°]	TVD [ft]	Vert Sect [ft]	North [ft]	East [ft]	Latitude	Longitude	DLS [°/100ft]	Comments
9455.00	90.460	179.510	7647.38	1698.81	-1661.97	-442.16	40°05'47.165"N	104°53'03.187"W	1.18	
9626.00	90.090	181.610	7646.56	1869.05	-1832.95	-443.83	40°05'45.476"N	104°53'03.208"W	1.25	
9796.00	90.830	182.120	7645.20	2038.61	-2002.85	-449.36	40°05'43.796"N	104°53'03.279"W	0.53	
9967.00	90.120	182.090	7643.78	2209.22	-2173.73	-455.64	40°05'42.108"N	104°53'03.360"W	0.42	
10137.00	89.690	181.480	7644.06	2378.77	-2343.64	-460.94	40°05'40.429"N	104°53'03.428"W	0.44	
10308.00	89.010	180.980	7646.00	2549.18	-2514.59	-464.61	40°05'38.739"N	104°53'03.475"W	0.49	
10478.00	89.470	181.250	7648.26	2718.56	-2684.54	-467.91	40°05'37.060"N	104°53'03.518"W	0.31	
10649.00	89.190	181.270	7650.26	2888.98	-2855.49	-471.67	40°05'35.371"N	104°53'03.566"W	0.16	
10819.00	90.090	181.720	7651.33	3058.46	-3025.43	-476.11	40°05'33.691"N	104°53'03.623"W	0.59	
10990.00	89.930	181.450	7651.30	3228.97	-3196.36	-480.84	40°05'32.002"N	104°53'03.684"W	0.18	
11160.00	87.340	180.910	7655.35	3398.32	-3366.26	-484.34	40°05'30.323"N	104°53'03.729"W	1.56	
11329.00	89.530	179.620	7659.96	3566.41	-3535.18	-485.12	40°05'28.654"N	104°53'03.739"W	1.50	
11500.00	91.880	179.750	7657.86	3736.37	-3706.16	-484.18	40°05'26.964"N	104°53'03.727"W	1.38	
11671.00	92.090	179.650	7651.93	3906.25	-3877.05	-483.29	40°05'25.275"N	104°53'03.715"W	0.14	
11841.00	87.310	176.850	7652.82	4074.65	-4046.90	-478.10	40°05'23.597"N	104°53'03.648"W	3.26	
12011.00	89.960	177.600	7656.87	4242.63	-4216.64	-469.87	40°05'21.919"N	104°53'03.543"W	1.62	
12166.00	89.690	177.340	7657.35	4395.93	-4371.49	-463.03	40°05'20.389"N	104°53'03.454"W	0.24	LAST BHI MWD+IFR SURVEY
12219.00	89.690	177.340	7657.63	4448.34	-4424.43	-460.57	40°05'19.866"N	104°53'03.423"W	0.00	PROJECTION TO BIT

HOLE & CASING SECTIONS - Ref Wellbore: SPURLING 13C-34HZ AWB Ref Wellpath: SPURLING 13C-34HZ AWP

String/Diameter	Start MD [ft]	End MD [ft]	Interval [ft]	Start TVD [ft]	End TVD [ft]	Start N/S [ft]	Start E/W [ft]	End N/S [ft]	End E/W [ft]
13.5in Open Hole	16.00	1075.00	1059.00	16.00	1074.97	0.00	0.00	-1.36	-2.14
9.625in Casing Surface	16.00	1075.00	1059.00	16.00	1074.97	0.00	0.00	-1.36	-2.14
8.75in Open Hole	1075.00	8029.00	6954.00	1074.97	7642.61	-1.36	-2.14	-236.58	-459.95
7in Casing Intermediate	16.00	8019.00	8003.00	16.00	7642.54	0.00	0.00	-226.58	-460.20
6.125in Open Hole	8029.00	12219.00	4190.00	7642.61	7657.63	-236.58	-459.95	-4424.43	-460.57

Actual Wellpath Report

SPURLING 13C-34HZ AWP

Page 5 of 6

REFERENCE WELLPATH IDENTIFICATION

Operator	KERR-MCGEE OIL & GAS ONSHORE LP	Slot	SLOT#05 SPURLING 13C-34HZ (377' FNL & 1058' FWL, SEC.34)
Area	COLORADO	Well	SPURLING 13C-34HZ
Field	WELD COUNTY (KERR MCGEE)	Wellbore	SPURLING 13C-34HZ AWB
Facility	SEC.34-T2N-R67W		

TARGETS

Name	MD [ft]	TVD [ft]	North [ft]	East [ft]	Grid East [US ft]	Grid North [US ft]	Latitude	Longitude	Shape
SEC.34-T2N-R47W HARD LINES (460' SETBACKS)		5029.00	0.41	120.06	3172818.68	1280239.99	40°06'03.593"N	104°52'55.952"W	polygon
SEC.34-T2N-R67W SECTION LINES		5029.00	0.41	120.06	3172818.68	1280239.99	40°06'03.593"N	104°52'55.952"W	polygon
SPURLING 13C-34HZ (460' FSL & 610' FWL, SEC.34) REV-2		7664.00	-4449.45	-463.05	3172266.59	1275786.37	40°05'19.619"N	104°53'03.455"W	point
SPURLING 13C-34HZ (460' FSL & 610' FWL, SEC.34) REV-1		7666.00	-4449.45	-463.05	3172266.58	1275786.37	40°05'19.619"N	104°53'03.455"W	point
SPURLING 13C-34HZ LAND BOX		7700.00	0.00	0.00	3172698.63	1280238.75	40°06'03.589"N	104°52'57.497"W	polygon

WELLPATH COMPOSITION - Ref Wellbore: SPURLING 13C-34HZ AWB Ref Wellpath: SPURLING 13C-34HZ AWP

Start MD [ft]	End MD [ft]	Positional Uncertainty Model	Log Name/Comment	Wellbore
16.00	985.00	Generic gyro - continuous (Standard)	MS GYRODATA SURVEYS <116-985>	SPURLING 13C-34HZ AWB
985.00	8035.00	NaviTrak (MAGCORR,IFR)	BHI MWD+IFR SURVEYS 8 3/4" HOLE <1080-8035>	SPURLING 13C-34HZ AWB
8035.00	12166.00	NaviTrak (MAGCORR,IFR)	BHI MWD+IFR SURVEYS 6 1/8" HOLE <8098-12166>	SPURLING 13C-34HZ AWB
12166.00	12219.00	Blind Drilling (std)	Projection to bit	SPURLING 13C-34HZ AWB

Actual Wellpath Report

SPURLING 13C-34HZ AWP

Page 6 of 6

REFERENCE WELLPATH IDENTIFICATION			
Operator	KERR-MCGEE OIL & GAS ONSHORE LP	Slot	SLOT#05 SPURLING 13C-34HZ (377' FNL & 1058' FWL, SEC.34)
Area	COLORADO	Well	SPURLING 13C-34HZ
Field	WELD COUNTY (KERR MCGEE)	Wellbore	SPURLING 13C-34HZ AWB
Facility	SEC.34-T2N-R67W		

WELLPATH COMMENTS				
MD [ft]	Inclination [°]	Azimuth [°]	TVD [ft]	Comment
16.00	0.000	305.550	16.00	TIE-IN
116.00	0.470	305.550	116.00	BEGIN GYRO SURVEYS
985.00	0.400	64.990	984.98	TIE-INTO GYRO SURVEYS
1080.00	0.490	318.840	1079.97	BEGIN BHI MWD+IFR SURVEYS
8019.00	89.353	178.532	7642.54	7" CASING POINT
12166.00	89.690	177.340	7657.35	LAST BHI MWD+IFR SURVEY
12219.00	89.690	177.340	7657.63	PROJECTION TO BIT