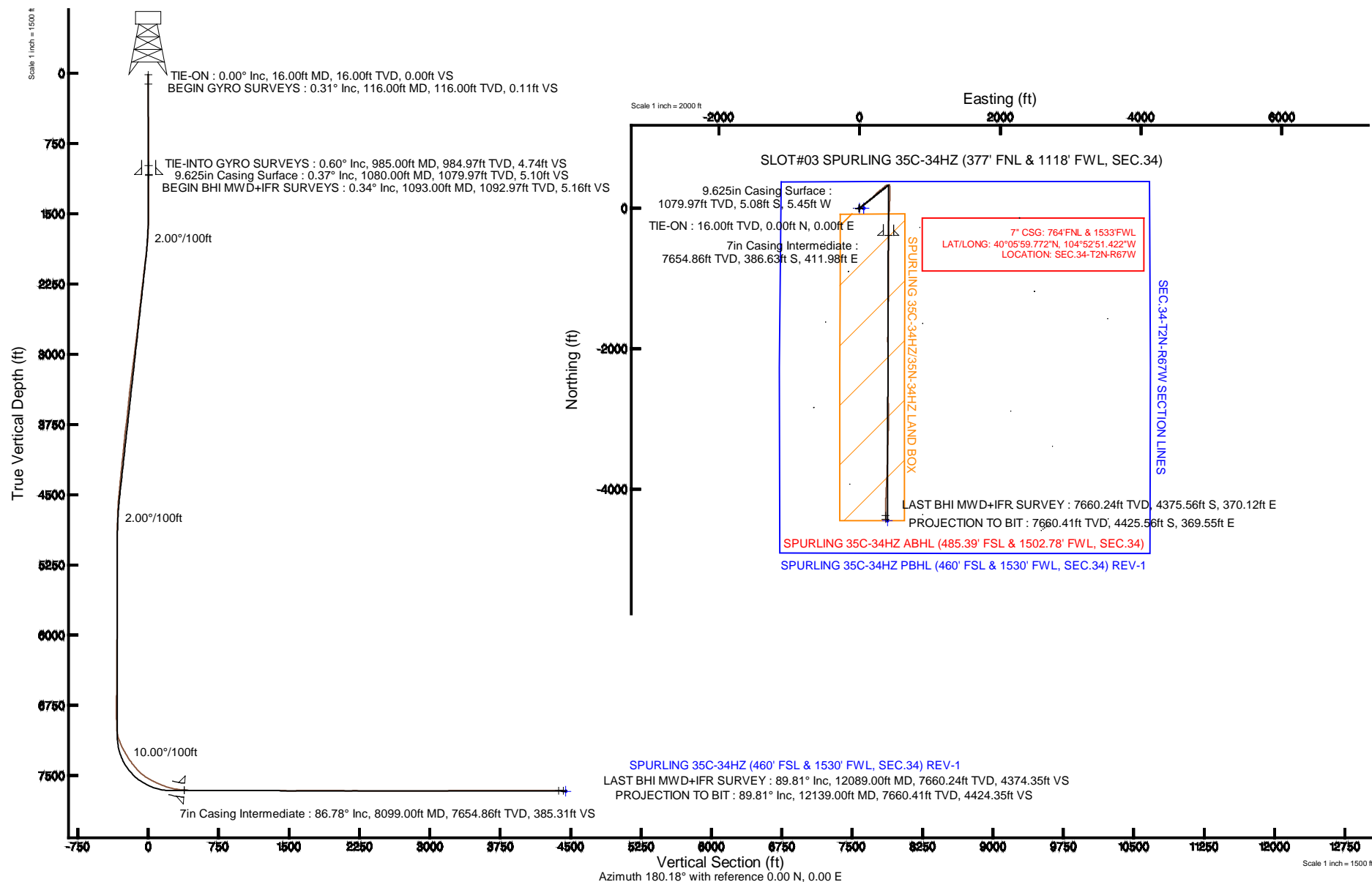


KERR-MCGEE OIL & GAS ONSHORE LP

Location:	COLORADO	Slot:	SLOT#03 SPURLING 35C-34HZ (377' FNL & 1118' FWL, SEC.34)
Field:	WELD COUNTY (KERR MCGEE)	Well:	SPURLING 35C-34HZ
Facility:	SEC.34-T2N-R67W	Wellbore:	SPURLING 35C-34HZ PWB

Plot reference wellpath is SPURLING 35C-34HZ (REV-A.0) PWP	
True vertical depths are referenced to XTREME 6 (16RKB) (RKB)	Grid System: NAD83 / Lambert Colorado SP, Northern Zone (501), US feet
Measured depths are referenced to XTREME 6 (16RKB) (RKB)	North Reference: True north
XTREME 6 (16RKB) (RKB) to Mean Sea Level: 5029 feet	Scale: True distance
Mean Sea Level to Mud line (At Slot: SLOTR03 SPURLING 35C-34HZ (377 FNL & 1118 FWL, SEC.34): 0 feet	Depths are in feet
Coordinates are in feet referenced to SLOT	Created by: robiale01 on 25/Jun/2014



Actual Wellpath Report

SPURLING 35C-34HZ AWP

Page 1 of 6

REFERENCE WELLPATH IDENTIFICATION

Operator	KERR-MCGEE OIL & GAS ONSHORE LP	Slot	SLOT#03 SPURLING 35C-34HZ (377' FNL & 1118' FWL, SEC.34)
Area	COLORADO	Well	SPURLING 35C-34HZ
Field	WELD COUNTY (KERR MCGEE)	Wellbore	SPURLING 35C-34HZ AWB
Facility	SEC.34-T2N-R67W		

REPORT SETUP INFORMATION

Projection System	NAD83 / Lambert Colorado SP, Northern Zone (501), US feet	Software System	WellArchitect® 4.0.0
North Reference	True	User	Robiale01
Scale	0.99996	Report Generated	25/Jun/2014 at 13:36
Convergence at slot	n/a	Database/Source file	WellArchitectDB/SPURLING_35C-34HZ_AWB.xml

WELLPATH LOCATION

	Local coordinates		Grid coordinates		Geographic coordinates	
	North[ft]	East[ft]	Easting[US ft]	Northing[US ft]	Latitude	Longitude
Slot Location	0.00	-59.99	3172758.77	1280239.58	40°06'03.593"N	104°52'56.723"W
Facility Reference Pt			3172818.76	1280239.99	40°06'03.593"N	104°52'55.951"W
Field Reference Pt			3197771.84	1268891.29	40°04'09.600"N	104°47'36.000"W

WELLPATH DATUM

Calculation method	Minimum curvature	XTREME 6 (16'RKB) (RKB) to Facility Vertical Datum	5029.00ft
Horizontal Reference Pt	Slot	XTREME 6 (16'RKB) (RKB) to Mean Sea Level	5029.00ft
Vertical Reference Pt	XTREME 6 (16'RKB) (RKB)	XTREME 6 (16'RKB) (RKB) to Mud Line at Slot (SLOT#03 SPURLING 35C-34HZ (377' FNL & 1118' FWL, SEC.34))	5029.00ft
MD Reference Pt	XTREME 6 (16'RKB) (RKB)	Section Origin	N 0.00, E 0.00 ft
Field Vertical Reference	Mean Sea Level	Section Azimuth	175.23°

REFERENCE WELLPATH IDENTIFICATION

Operator	KERR-MCGEE OIL & GAS ONSHORE LP	Slot	SLOT#03 SPURLING 35C-34HZ (377' FNL & 1118' FWL, SEC.34)
Area	COLORADO	Well	SPURLING 35C-34HZ
Field	WELD COUNTY (KERR MCGEE)	Wellbore	SPURLING 35C-34HZ AWP
Facility	SEC.34-T2N-R67W		

WELLPATH DATA (138 stations) † = interpolated/extrapolated station

MD [ft]	Inclination [°]	Azimuth [°]	TVD [ft]	Vert Sect [ft]	North [ft]	East [ft]	Latitude	Longitude	DLS [°/100ft]	Comments
0.00†	0.000	245.380	0.00	0.00	0.00	0.00	40°06'03.593"N	104°52'56.723"W	0.00	
16.00	0.000	245.380	16.00	0.00	0.00	0.00	40°06'03.593"N	104°52'56.723"W	0.00	TIE-ON
116.00	0.310	245.380	116.00	0.09	-0.11	-0.25	40°06'03.592"N	104°52'56.726"W	0.31	BEGIN GYRO SURVEYS
216.00	0.380	222.220	216.00	0.41	-0.47	-0.71	40°06'03.588"N	104°52'56.732"W	0.15	
316.00	0.380	216.160	316.00	0.89	-0.98	-1.13	40°06'03.583"N	104°52'56.738"W	0.04	
416.00	0.390	202.240	415.99	1.44	-1.57	-1.46	40°06'03.578"N	104°52'56.742"W	0.09	
516.00	0.500	202.220	515.99	2.13	-2.29	-1.75	40°06'03.570"N	104°52'56.746"W	0.11	
616.00	0.360	211.230	615.99	2.78	-2.96	-2.08	40°06'03.564"N	104°52'56.750"W	0.16	
716.00	0.500	246.530	715.98	3.17	-3.40	-2.64	40°06'03.559"N	104°52'56.757"W	0.29	
816.00	0.540	225.820	815.98	3.61	-3.90	-3.38	40°06'03.554"N	104°52'56.767"W	0.19	
916.00	0.530	241.740	915.98	4.09	-4.45	-4.13	40°06'03.549"N	104°52'56.776"W	0.15	
985.00	0.600	250.150	984.97	4.31	-4.72	-4.75	40°06'03.546"N	104°52'56.784"W	0.16	TIE-INTO GYRO SURVEYS
1093.00	0.340	226.390	1092.97	4.66	-5.14	-5.51	40°06'03.542"N	104°52'56.794"W	0.30	BEGIN BHI MWD+IFR SURVEYS
1154.00	0.290	209.460	1153.97	4.90	-5.40	-5.72	40°06'03.540"N	104°52'56.797"W	0.17	
1248.00	0.030	332.950	1247.97	5.08	-5.58	-5.85	40°06'03.538"N	104°52'56.798"W	0.33	
1339.00	0.150	231.730	1338.97	5.12	-5.63	-5.95	40°06'03.537"N	104°52'56.800"W	0.17	
1431.00	0.160	118.390	1430.97	5.26	-5.77	-5.93	40°06'03.536"N	104°52'56.799"W	0.28	
1520.00	1.480	48.260	1519.96	4.63	-5.06	-4.96	40°06'03.543"N	104°52'56.787"W	1.61	
1610.00	4.400	64.560	1609.83	2.72	-2.81	-0.98	40°06'03.565"N	104°52'56.736"W	3.34	
1701.00	5.910	56.490	1700.46	-0.77	1.28	6.08	40°06'03.606"N	104°52'56.645"W	1.84	
1792.00	7.230	50.810	1790.86	-6.26	7.48	14.42	40°06'03.667"N	104°52'56.537"W	1.62	
1883.00	8.800	43.820	1880.97	-14.10	16.13	23.68	40°06'03.752"N	104°52'56.418"W	2.03	
1974.00	9.990	46.950	1970.75	-23.59	26.54	34.27	40°06'03.855"N	104°52'56.282"W	1.42	
2065.00	11.020	50.700	2060.23	-33.41	37.43	46.77	40°06'03.963"N	104°52'56.121"W	1.36	
2156.00	10.560	51.420	2149.62	-42.98	48.14	60.02	40°06'04.069"N	104°52'55.951"W	0.53	
2246.00	10.420	49.530	2238.11	-52.32	58.57	72.66	40°06'04.172"N	104°52'55.788"W	0.41	
2338.00	9.570	50.960	2328.72	-61.48	68.79	84.93	40°06'04.273"N	104°52'55.630"W	0.96	
2429.00	10.830	53.450	2418.28	-70.24	78.64	97.67	40°06'04.370"N	104°52'55.466"W	1.47	
2519.00	10.850	53.130	2506.67	-79.20	88.76	111.24	40°06'04.470"N	104°52'55.291"W	0.07	
2610.00	10.190	53.030	2596.14	-88.04	98.74	124.52	40°06'04.569"N	104°52'55.121"W	0.73	
2701.00	9.410	50.250	2685.81	-96.59	108.34	136.67	40°06'04.664"N	104°52'54.964"W	1.00	
2792.00	11.000	50.740	2775.37	-105.77	118.59	149.12	40°06'04.765"N	104°52'54.804"W	1.75	
2882.00	10.730	49.230	2863.76	-115.56	129.49	162.11	40°06'04.873"N	104°52'54.637"W	0.44	
3064.00	9.440	43.740	3042.94	-135.40	151.34	185.26	40°06'05.089"N	104°52'54.339"W	0.88	
3235.00	10.880	45.540	3211.26	-155.00	172.78	206.48	40°06'05.300"N	104°52'54.066"W	0.86	
3405.00	9.510	44.520	3378.57	-174.40	194.03	227.78	40°06'05.510"N	104°52'53.792"W	0.81	
3576.00	8.090	50.750	3547.56	-190.43	211.72	247.00	40°06'05.685"N	104°52'53.544"W	1.00	
3747.00	11.410	51.240	3716.06	-206.70	229.93	269.51	40°06'05.865"N	104°52'53.255"W	1.94	
3917.00	8.890	48.680	3883.39	-223.92	249.13	292.50	40°06'06.055"N	104°52'52.959"W	1.51	
4087.00	8.380	47.260	4051.46	-239.37	266.21	311.46	40°06'06.224"N	104°52'52.715"W	0.33	
4256.00	9.860	53.310	4218.33	-254.60	283.21	332.11	40°06'06.392"N	104°52'52.449"W	1.04	
4426.00	8.520	50.360	4386.14	-269.49	299.95	353.48	40°06'06.557"N	104°52'52.174"W	0.84	
4509.00	7.920	50.000	4468.29	-276.30	307.54	362.59	40°06'06.632"N	104°52'52.057"W	0.73	
4594.00	7.570	48.510	4552.51	-283.03	315.02	371.27	40°06'06.706"N	104°52'51.945"W	0.47	
4680.00	6.490	62.710	4637.87	-288.28	321.00	379.84	40°06'06.765"N	104°52'51.835"W	2.37	

REFERENCE WELLPATH IDENTIFICATION

Operator	KERR-MCGEE OIL & GAS ONSHORE LP	Slot	SLOT#03 SPURLING 35C-34HZ (377' FNL & 1118' FWL, SEC.34)
Area	COLORADO	Well	SPURLING 35C-34HZ
Field	WELD COUNTY (KERR MCGEE)	Wellbore	SPURLING 35C-34HZ AWB
Facility	SEC.34-T2N-R67W		

WELLPATH DATA (138 stations) † = interpolated/extrapolated station

MD [ft]	Inclination [°]	Azimuth [°]	TVD [ft]	Vert Sect [ft]	North [ft]	East [ft]	Latitude	Longitude	DLS [°/100ft]	Comments
4765.00	4.990	71.600	4722.44	-290.99	324.37	387.61	40°06'06.798"N	104°52'51.735"W	2.05	
4849.00	4.470	71.890	4806.16	-292.60	326.54	394.19	40°06'06.820"N	104°52'51.650"W	0.62	
4935.00	3.230	80.140	4891.96	-293.59	328.00	399.77	40°06'06.834"N	104°52'51.579"W	1.58	
5020.00	2.070	86.100	4976.87	-293.78	328.51	403.66	40°06'06.839"N	104°52'51.528"W	1.40	
5105.00	1.710	84.820	5061.82	-293.77	328.73	406.45	40°06'06.842"N	104°52'51.492"W	0.43	
5275.00	1.130	94.280	5231.77	-293.52	328.83	410.65	40°06'06.843"N	104°52'51.438"W	0.37	
5446.00	0.770	75.490	5402.75	-293.45	329.00	413.44	40°06'06.844"N	104°52'51.402"W	0.28	
5616.00	0.490	58.250	5572.74	-293.97	329.66	415.17	40°06'06.851"N	104°52'51.380"W	0.20	
5787.00	0.400	62.950	5743.73	-294.53	330.32	416.32	40°06'06.857"N	104°52'51.365"W	0.06	
5958.00	0.230	48.520	5914.73	-294.96	330.82	417.11	40°06'06.862"N	104°52'51.355"W	0.11	
6129.00	0.180	20.980	6085.73	-295.41	331.30	417.46	40°06'06.867"N	104°52'51.351"W	0.06	
6299.00	0.660	14.920	6255.72	-296.57	332.49	417.81	40°06'06.879"N	104°52'51.346"W	0.28	
6470.00	0.730	30.270	6426.71	-298.39	334.38	418.61	40°06'06.897"N	104°52'51.336"W	0.12	
6640.00	1.090	68.600	6596.69	-299.74	335.91	420.66	40°06'06.912"N	104°52'51.310"W	0.40	
6725.00	1.410	72.580	6681.67	-300.20	336.52	422.41	40°06'06.918"N	104°52'51.287"W	0.39	
6811.00	0.340	93.330	6767.66	-300.40	336.82	423.68	40°06'06.921"N	104°52'51.271"W	1.28	
6982.00	0.770	142.110	6938.65	-299.36	335.88	424.89	40°06'06.912"N	104°52'51.255"W	0.35	
7024.00	1.650	156.990	6980.64	-298.55	335.10	425.30	40°06'06.905"N	104°52'51.250"W	2.21	
7067.00	6.890	169.090	7023.51	-295.40	332.00	426.03	40°06'06.874"N	104°52'51.240"W	12.30	
7109.00	13.050	169.410	7064.86	-288.17	324.86	427.38	40°06'06.803"N	104°52'51.223"W	14.67	
7152.00	18.850	171.780	7106.18	-276.39	313.20	429.27	40°06'06.688"N	104°52'51.199"W	13.57	
7194.00	21.980	172.700	7145.54	-261.76	298.69	431.24	40°06'06.545"N	104°52'51.174"W	7.49	
7237.00	24.660	175.200	7185.02	-244.75	281.76	433.01	40°06'06.377"N	104°52'51.151"W	6.64	
7279.00	27.370	177.920	7222.77	-226.34	263.38	434.09	40°06'06.196"N	104°52'51.137"W	7.05	
7322.00	30.110	178.120	7260.47	-205.69	242.72	434.81	40°06'05.992"N	104°52'51.128"W	6.38	
7365.00	33.270	179.260	7297.05	-183.15	220.14	435.31	40°06'05.768"N	104°52'51.121"W	7.48	
7407.00	34.940	181.960	7331.83	-159.71	196.59	435.05	40°06'05.536"N	104°52'51.124"W	5.37	
7450.00	36.190	184.090	7366.81	-134.94	171.62	433.72	40°06'05.289"N	104°52'51.142"W	4.09	
7493.00	37.970	183.870	7401.11	-109.31	145.76	431.93	40°06'05.033"N	104°52'51.165"W	4.15	
7536.00	41.630	183.310	7434.14	-82.09	118.30	430.21	40°06'04.762"N	104°52'51.187"W	8.55	
7578.00	47.630	182.430	7464.02	-52.85	88.84	428.74	40°06'04.471"N	104°52'51.206"W	14.36	
7621.00	53.320	183.040	7491.37	-19.99	55.72	427.15	40°06'04.144"N	104°52'51.226"W	13.28	
7664.00	56.990	182.380	7515.94	15.00	20.48	425.49	40°06'03.795"N	104°52'51.248"W	8.63	
7706.00	60.580	182.810	7537.70	50.62	-15.40	423.86	40°06'03.441"N	104°52'51.268"W	8.59	
7749.00	62.980	182.970	7558.03	88.16	-53.24	421.95	40°06'03.067"N	104°52'51.293"W	5.59	
7792.00	65.610	182.470	7576.68	126.57	-91.93	420.11	40°06'02.684"N	104°52'51.317"W	6.21	
7834.00	67.140	182.580	7593.51	164.74	-130.37	418.42	40°06'02.305"N	104°52'51.339"W	3.65	
7877.00	69.200	182.800	7609.50	204.32	-170.24	416.54	40°06'01.911"N	104°52'51.363"W	4.81	
7919.00	72.960	182.810	7623.12	243.69	-209.92	414.60	40°06'01.518"N	104°52'51.388"W	8.95	
7962.00	76.800	181.740	7634.33	284.88	-251.39	412.96	40°06'01.109"N	104°52'51.409"W	9.25	
8004.00	78.680	180.740	7643.25	325.70	-292.42	412.07	40°06'00.703"N	104°52'51.420"W	5.04	
8047.00	82.950	179.780	7650.11	367.97	-334.86	411.88	40°06'00.284"N	104°52'51.423"W	10.17	
8061.00	83.760	179.930	7651.73	381.83	-348.76	411.91	40°06'00.146"N	104°52'51.422"W	5.88	
8099.00†	86.781	179.885	7654.86	419.57	-386.63	411.98	40°05'59.772"N	104°52'51.422"W	7.95	7" CASING POINT
8120.00	88.450	179.860	7655.74	440.48	-407.61	412.02	40°05'59.565"N	104°52'51.421"W	7.95	

REFERENCE WELLPATH IDENTIFICATION

Operator	KERR-MCGEE OIL & GAS ONSHORE LP	Slot	SLOT#03 SPURLING 35C-34HZ (377' FNL & 1118' FWL, SEC.34)
Area	COLORADO	Well	SPURLING 35C-34HZ
Field	WELD COUNTY (KERR MCGEE)	Wellbore	SPURLING 35C-34HZ AWP
Facility	SEC.34-T2N-R67W		

WELLPATH DATA (138 stations)

MD [ft]	Inclination [°]	Azimuth [°]	TVD [ft]	Vert Sect [ft]	North [ft]	East [ft]	Latitude	Longitude	DLS [°/100ft]	Comments
8182.00	88.640	180.430	7657.31	502.24	-469.59	411.87	40°05'58.952"N	104°52'51.423"W	0.97	
8265.00	89.410	179.160	7658.73	584.96	-552.58	412.16	40°05'58.132"N	104°52'51.419"W	1.79	
8350.00	90.740	180.060	7658.61	669.71	-637.57	412.74	40°05'57.292"N	104°52'51.412"W	1.89	
8436.00	90.640	180.810	7657.58	755.34	-723.56	412.09	40°05'56.443"N	104°52'51.420"W	0.88	
8519.00	89.810	180.320	7657.25	837.98	-806.56	411.27	40°05'55.622"N	104°52'51.431"W	1.16	
8604.00	89.100	179.860	7658.06	922.67	-891.55	411.14	40°05'54.783"N	104°52'51.432"W	1.00	
8689.00	89.310	180.390	7659.24	1007.35	-976.54	410.95	40°05'53.943"N	104°52'51.435"W	0.67	
8774.00	90.650	179.170	7659.27	1092.08	-1061.54	411.28	40°05'53.103"N	104°52'51.431"W	2.13	
8858.00	90.430	181.260	7658.48	1175.76	-1145.53	410.96	40°05'52.273"N	104°52'51.435"W	2.50	
8944.00	89.750	180.320	7658.34	1261.35	-1231.52	409.78	40°05'51.423"N	104°52'51.450"W	1.35	
9029.00	88.540	180.390	7659.61	1346.00	-1316.51	409.25	40°05'50.583"N	104°52'51.457"W	1.43	
9114.00	90.090	180.560	7660.63	1430.63	-1401.50	408.55	40°05'49.743"N	104°52'51.466"W	1.83	
9199.00	89.220	180.730	7661.14	1515.25	-1486.49	407.59	40°05'48.903"N	104°52'51.478"W	1.04	
9284.00	91.020	180.990	7660.96	1599.84	-1571.48	406.31	40°05'48.063"N	104°52'51.495"W	2.14	
9370.00	90.150	180.910	7660.08	1685.40	-1657.46	404.89	40°05'47.214"N	104°52'51.513"W	1.02	
9455.00	89.590	180.770	7660.28	1769.99	-1742.45	403.64	40°05'46.374"N	104°52'51.529"W	0.68	
9540.00	90.890	180.690	7659.92	1854.60	-1827.44	402.56	40°05'45.534"N	104°52'51.543"W	1.53	
9625.00	88.880	179.310	7660.09	1939.30	-1912.43	402.56	40°05'44.694"N	104°52'51.543"W	2.87	
9711.00	90.340	179.760	7660.68	2025.05	-1998.42	403.26	40°05'43.844"N	104°52'51.534"W	1.78	
9796.00	89.440	179.740	7660.84	2109.78	-2083.42	403.63	40°05'43.004"N	104°52'51.529"W	1.06	
9882.00	90.430	179.540	7660.94	2195.53	-2169.42	404.17	40°05'42.154"N	104°52'51.522"W	1.17	
9967.00	89.130	179.060	7661.26	2280.31	-2254.41	405.21	40°05'41.315"N	104°52'51.509"W	1.63	
10052.00	89.900	179.830	7661.98	2365.08	-2339.40	406.03	40°05'40.475"N	104°52'51.498"W	1.28	
10138.00	90.700	180.180	7661.53	2450.78	-2425.40	406.02	40°05'39.625"N	104°52'51.499"W	1.02	
10223.00	89.810	179.900	7661.15	2535.47	-2510.40	405.96	40°05'38.785"N	104°52'51.499"W	1.10	
10308.00	89.350	179.090	7661.78	2620.23	-2595.39	406.71	40°05'37.945"N	104°52'51.490"W	1.10	
10394.00	90.300	179.340	7662.04	2706.03	-2681.38	407.89	40°05'37.095"N	104°52'51.475"W	1.14	
10479.00	89.720	179.180	7662.02	2790.81	-2766.38	408.99	40°05'36.255"N	104°52'51.460"W	0.71	
10564.00	90.060	179.780	7662.19	2875.58	-2851.37	409.76	40°05'35.415"N	104°52'51.451"W	0.81	
10649.00	89.320	179.450	7662.65	2960.33	-2936.37	410.33	40°05'34.575"N	104°52'51.443"W	0.95	
10735.00	89.690	179.630	7663.39	3046.08	-3022.36	411.02	40°05'33.726"N	104°52'51.434"W	0.48	
10820.00	91.320	181.110	7662.64	3130.73	-3107.35	410.47	40°05'32.886"N	104°52'51.441"W	2.59	
10905.00	90.800	181.590	7661.07	3215.23	-3192.31	408.47	40°05'32.046"N	104°52'51.467"W	0.83	
10991.00	90.900	182.260	7659.79	3300.63	-3278.25	405.58	40°05'31.197"N	104°52'51.504"W	0.79	
11076.00	90.430	181.630	7658.81	3385.04	-3363.20	402.70	40°05'30.357"N	104°52'51.542"W	0.92	
11161.00	89.040	181.390	7659.20	3469.53	-3448.17	400.46	40°05'29.518"N	104°52'51.570"W	1.66	
11247.00	90.710	181.260	7659.39	3555.04	-3534.14	398.47	40°05'28.668"N	104°52'51.596"W	1.95	
11332.00	90.340	181.190	7658.61	3639.57	-3619.12	396.65	40°05'27.828"N	104°52'51.619"W	0.44	
11417.00	90.730	182.010	7657.82	3724.04	-3704.08	394.28	40°05'26.989"N	104°52'51.650"W	1.07	
11503.00	90.270	182.070	7657.06	3809.43	-3790.02	391.22	40°05'26.139"N	104°52'51.689"W	0.54	
11588.00	90.060	183.030	7656.82	3893.74	-3874.94	387.43	40°05'25.300"N	104°52'51.738"W	1.16	
11674.00	88.820	183.030	7657.66	3978.93	-3960.81	382.89	40°05'24.452"N	104°52'51.797"W	1.44	
11759.00	89.690	182.250	7658.77	4063.21	-4045.71	378.97	40°05'23.613"N	104°52'51.847"W	1.37	
11844.00	88.660	182.060	7659.99	4147.58	-4130.64	375.78	40°05'22.773"N	104°52'51.888"W	1.23	
11929.00	90.330	181.350	7660.74	4232.03	-4215.60	373.25	40°05'21.934"N	104°52'51.921"W	2.13	

Actual Wellpath Report

SPURLING 35C-34HZ AWP

Page 5 of 6

REFERENCE WELLPATH IDENTIFICATION

Operator	KERR-MCGEE OIL & GAS ONSHORE LP	Slot	SLOT#03 SPURLING 35C-34HZ (377' FNL & 1118' FWL, SEC.34)
Area	COLORADO	Well	SPURLING 35C-34HZ
Field	WELD COUNTY (KERR MCGEE)	Wellbore	SPURLING 35C-34HZ AWB
Facility	SEC.34-T2N-R67W		

WELLPATH DATA (138 stations)

MD [ft]	Inclination [°]	Azimuth [°]	TVD [ft]	Vert Sect [ft]	North [ft]	East [ft]	Latitude	Longitude	DLS [°/100ft]	Comments
12014.00	90.270	181.220	7660.29	4316.56	-4300.57	371.34	40°05'21.094"N	104°52'51.945"W	0.17	
12089.00	89.810	180.650	7660.24	4391.19	-4375.56	370.12	40°05'20.353"N	104°52'51.961"W	0.98	LAST BHI MWD+IFR SURVEY
12139.00	89.810	180.650	7660.41	4440.96	-4425.56	369.55	40°05'19.859"N	104°52'51.968"W	0.00	PROJECTION TO BIT

HOLE & CASING SECTIONS - Ref Wellbore: SPURLING 35C-34HZ AWB Ref Wellpath: SPURLING 35C-34HZ AWP

String/Diameter	Start MD [ft]	End MD [ft]	Interval [ft]	Start TVD [ft]	End TVD [ft]	Start N/S [ft]	Start E/W [ft]	End N/S [ft]	End E/W [ft]
13.5in Open Hole	16.00	1080.00	1064.00	16.00	1079.97	0.00	0.00	-5.08	-5.45
9.625in Casing Surface	16.00	1080.00	1064.00	16.00	1079.97	0.00	0.00	-5.08	-5.45
8.75in Open Hole	1080.00	8108.00	7028.00	1079.97	7655.31	-5.08	-5.45	-395.62	411.99
7in Casing Intermediate	16.00	8099.00	8083.00	16.00	7654.86	0.00	0.00	-386.63	411.98
6.125in Open Hole	8108.00	12139.00	4031.00	7655.31	7660.41	-395.62	411.99	-4425.56	369.55

TARGETS

Name	MD [ft]	TVD [ft]	North [ft]	East [ft]	Grid East [US ft]	Grid North [US ft]	Latitude	Longitude	Shape
SEC.34-T2N-R47W HARD LINES (460' SETBACKS)		5029.00	0.00	59.91	3172818.68	1280239.99	40°06'03.593"N	104°52'55.952"W	polygon
SEC.34-T2N-R67W SECTION LINES		5029.00	0.00	59.91	3172818.68	1280239.99	40°06'03.593"N	104°52'55.952"W	polygon
SPURLING 35C-34HZ (460' FSL & 1530' FWL, SEC.34) REV-1		7666.00	-4450.95	396.77	3173186.51	1275791.68	40°05'19.608"N	104°52'51.618"W	point
SPURLING 35C-34HZ/35N-34HZ LAND BOX		7700.00	0.00	0.00	3172758.77	1280239.57	40°06'03.593"N	104°52'56.723"W	polygon

WELLPATH COMPOSITION - Ref Wellbore: SPURLING 35C-34HZ AWB Ref Wellpath: SPURLING 35C-34HZ AWP

Start MD [ft]	End MD [ft]	Positional Uncertainty Model	Log Name/Comment	Wellbore
16.00	985.00	Generic gyro - continuous (Standard)	MS GYRODATA SURVEYS <116-985>	SPURLING 35C-34HZ AWB
985.00	8061.00	NaviTrak (MAGCORR,IFR)	BHI MWD+IFR SURVEYS 8 3/4" HOLE <1093-8061>	SPURLING 35C-34HZ AWB
8061.00	12089.00	NaviTrak (MAGCORR,IFR)	BHI MWD+IFR SURVEYS 6 1/8" HOLE <8120-12089>	SPURLING 35C-34HZ AWB
12089.00	12139.00	Blind Drilling (std)	Projection to bit	SPURLING 35C-34HZ AWB

Actual Wellpath Report

SPURLING 35C-34HZ AWP

Page 6 of 6

REFERENCE WELLPATH IDENTIFICATION

Operator	KERR-MCGEE OIL & GAS ONSHORE LP	Slot	SLOT#03 SPURLING 35C-34HZ (377' FNL & 1118' FWL, SEC.34)
Area	COLORADO	Well	SPURLING 35C-34HZ
Field	WELD COUNTY (KERR MCGEE)	Wellbore	SPURLING 35C-34HZ AWB
Facility	SEC.34-T2N-R67W		

WELLPATH COMMENTS

MD [ft]	Inclination [°]	Azimuth [°]	TVD [ft]	Comment
16.00	0.000	245.380	16.00	TIE-ON
116.00	0.310	245.380	116.00	BEGIN GYRO SURVEYS
985.00	0.600	250.150	984.97	TIE-INTO GYRO SURVEYS
1093.00	0.340	226.390	1092.97	BEGIN BHI MWD+IFR SURVEYS
8099.00	86.781	179.885	7654.86	7" CASING POINT
12089.00	89.810	180.650	7660.24	LAST BHI MWD+IFR SURVEY
12139.00	89.810	180.650	7660.41	PROJECTION TO BIT