

| | | | | | | | | |
|---|---------|-----|---|---------------------------------|-----|---|---------------|----|
| 0 | FLOWIN | 800 | 0 | Rate of Penetration 3.0 ft. AVG | 800 | 0 | VALID2X.SEVZX | 10 |
| | USg/min | | | ft/hr | | | unitless | |

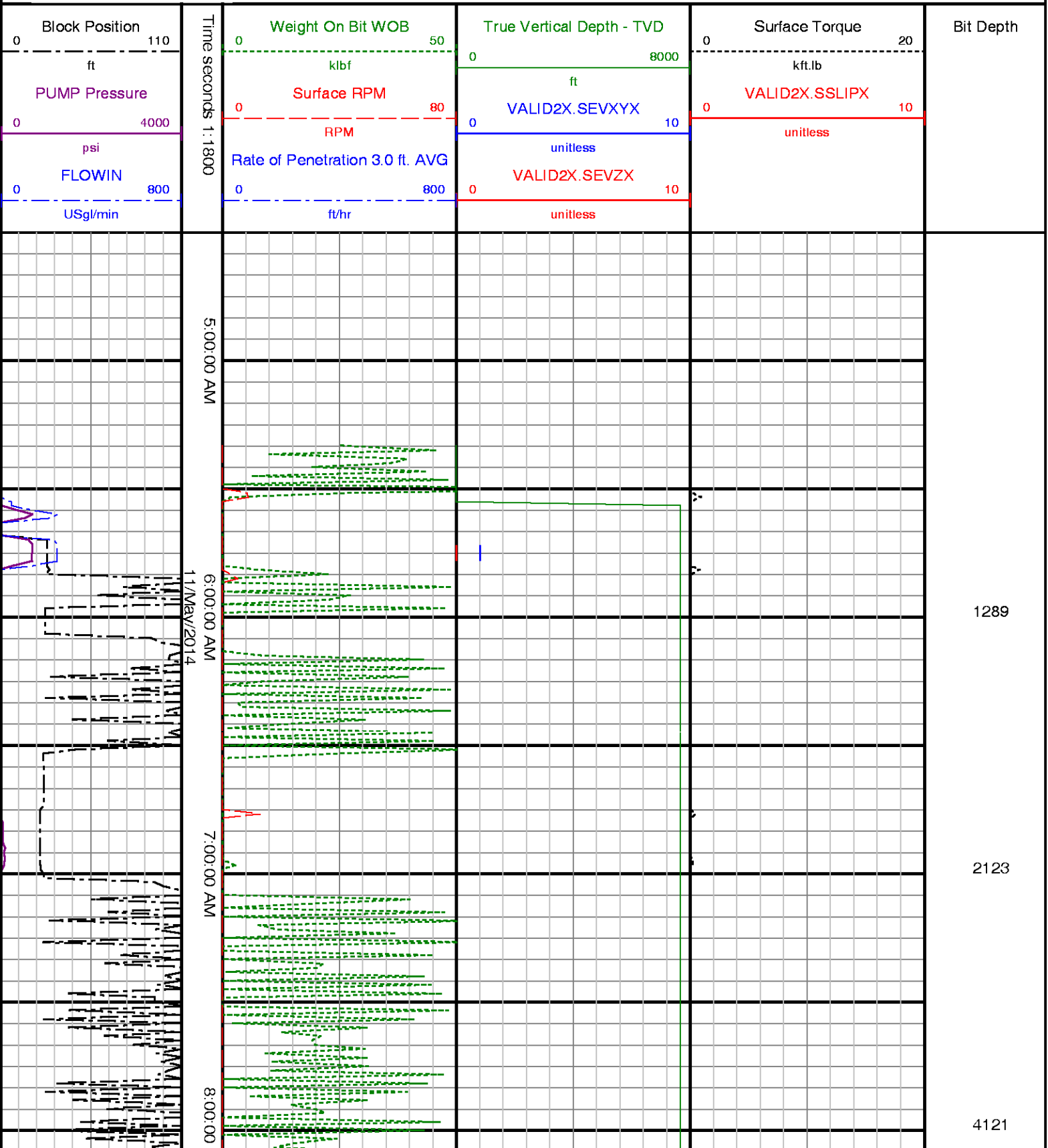


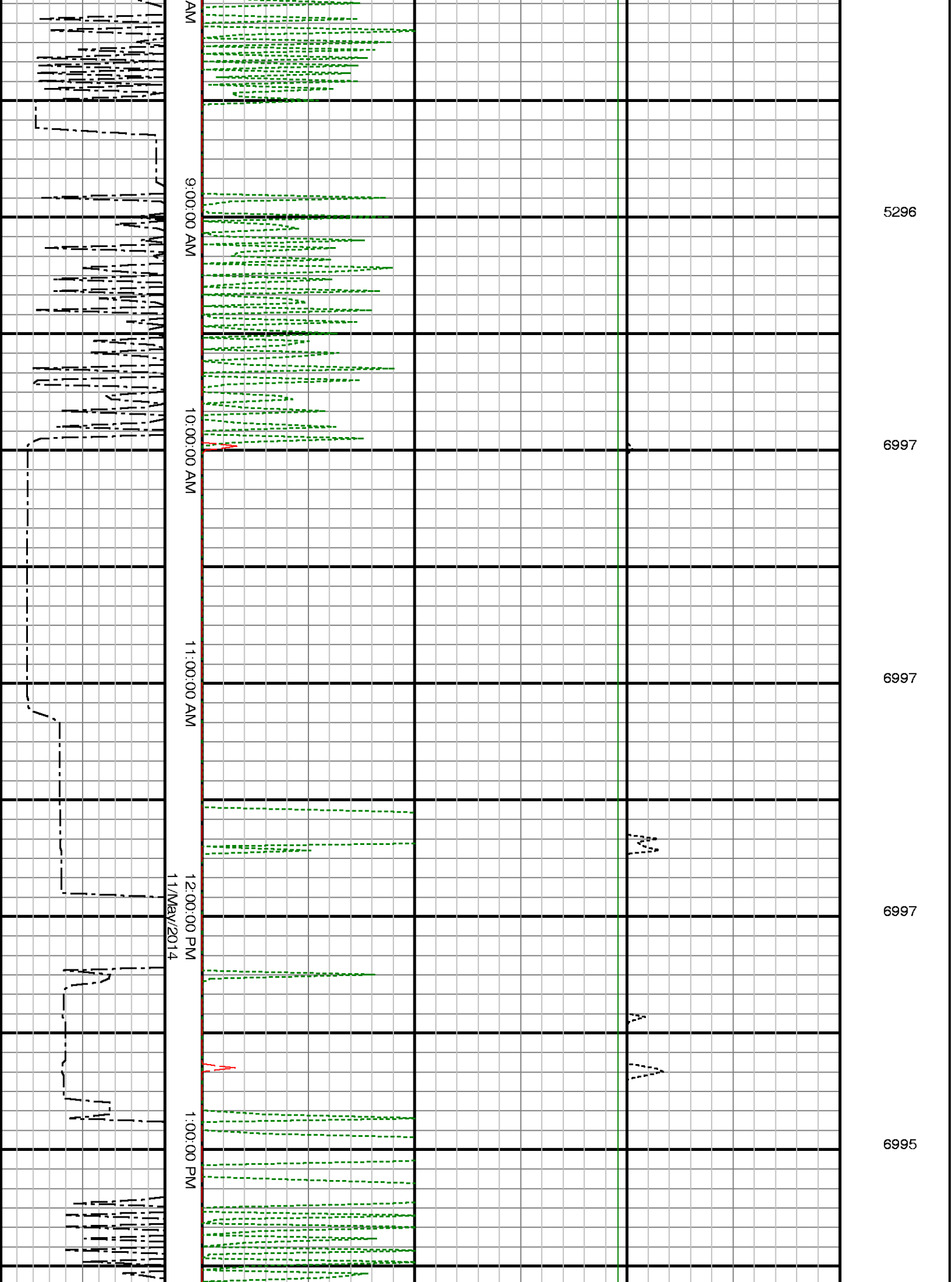
Company : Kerr McGee Oil & Gas Onshore LP

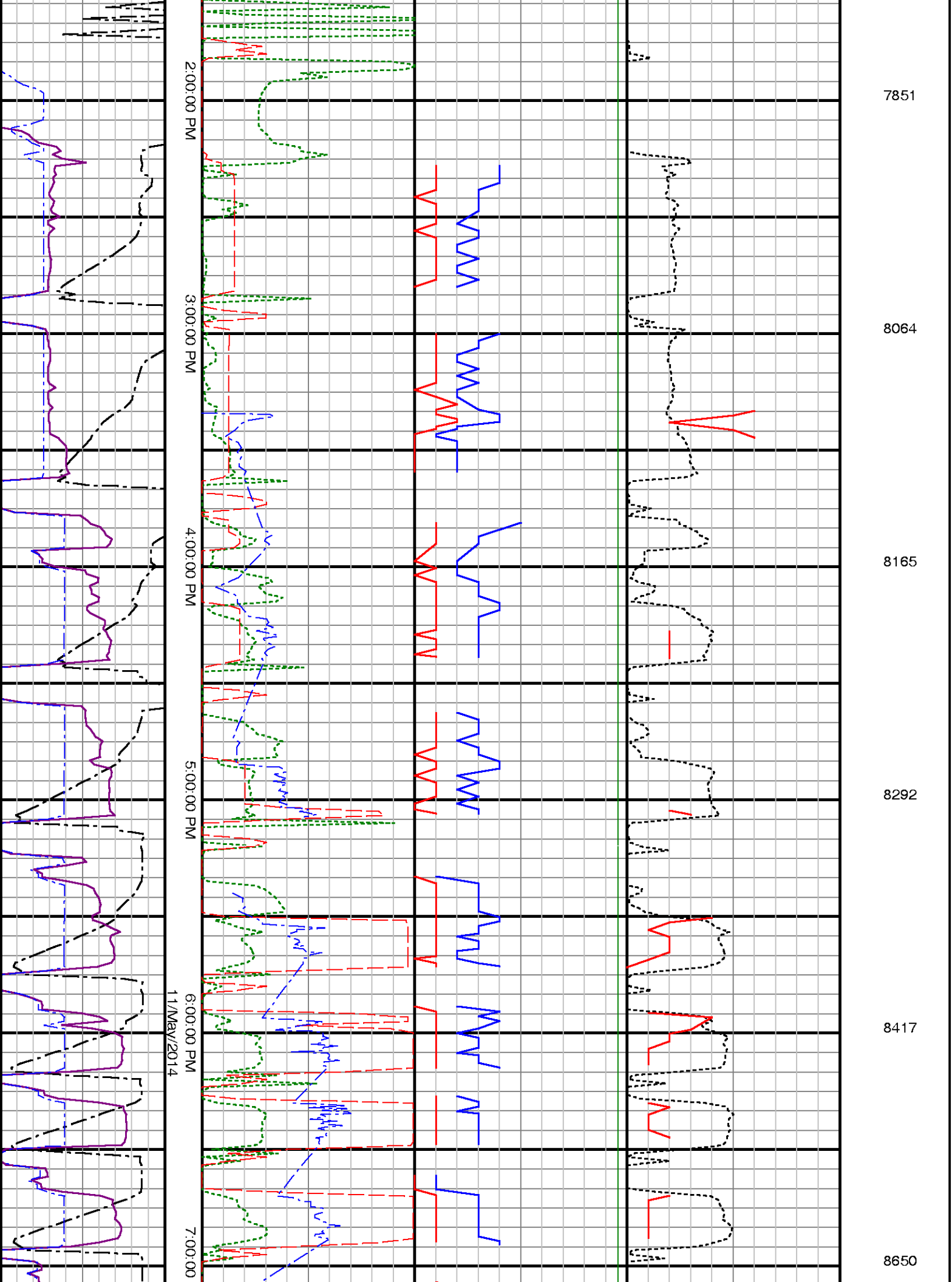
Well : Spurling 35C-34HZ

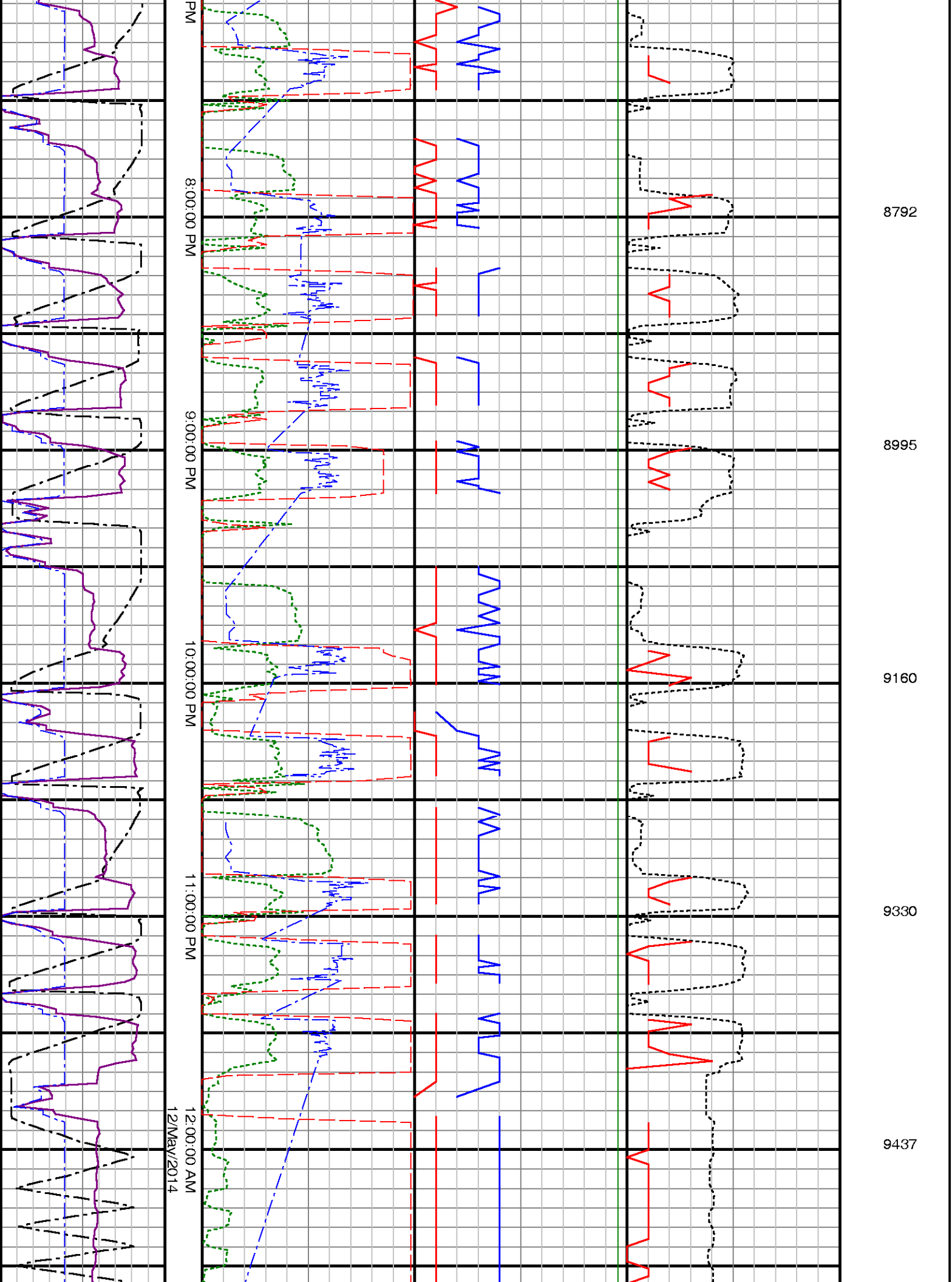
Interval : 11/May/2014 4:30:00 AM to 13/May/2014 6:30:00 AM

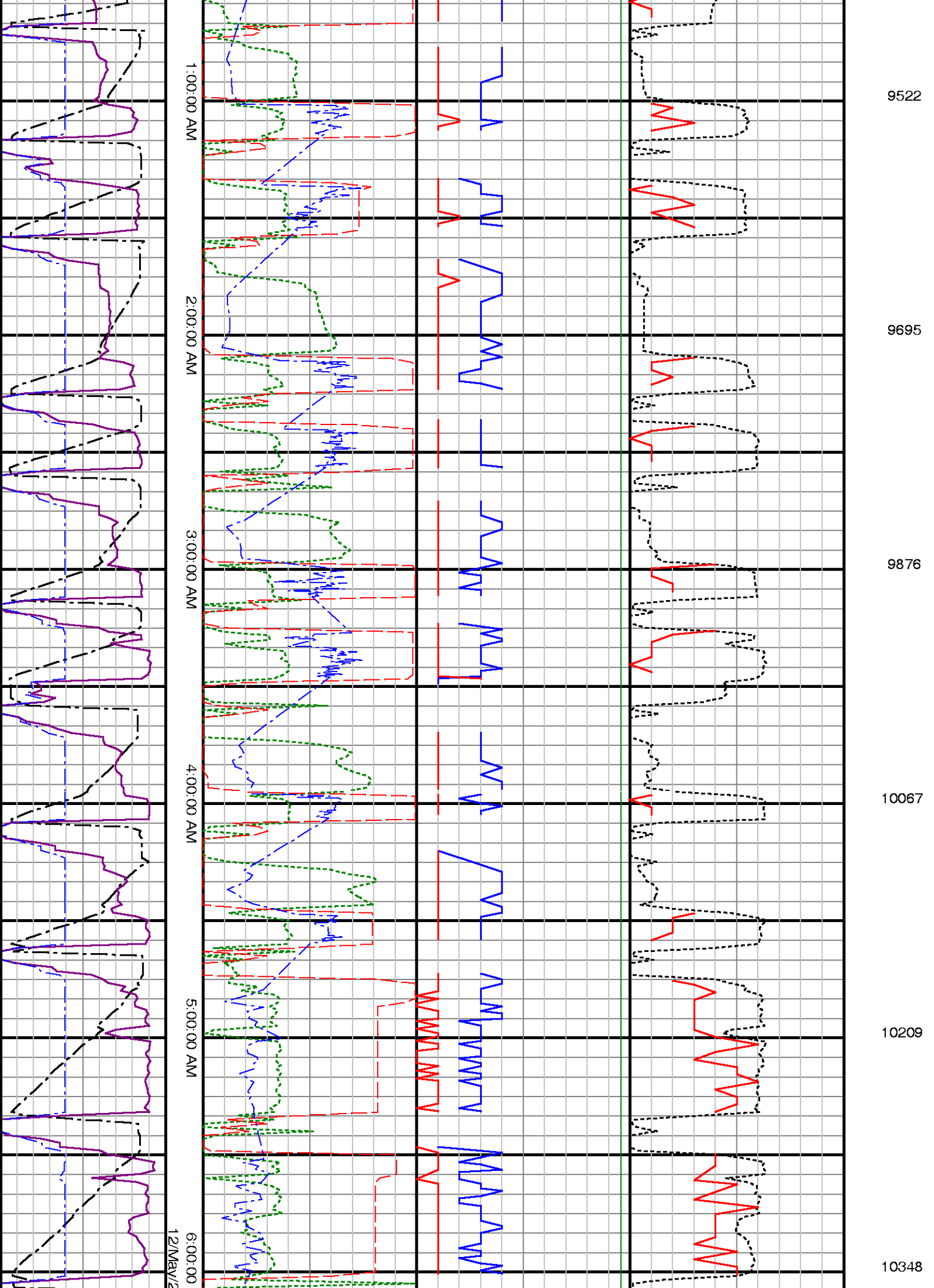
Created : 13/May/2014 7:22:18 AM

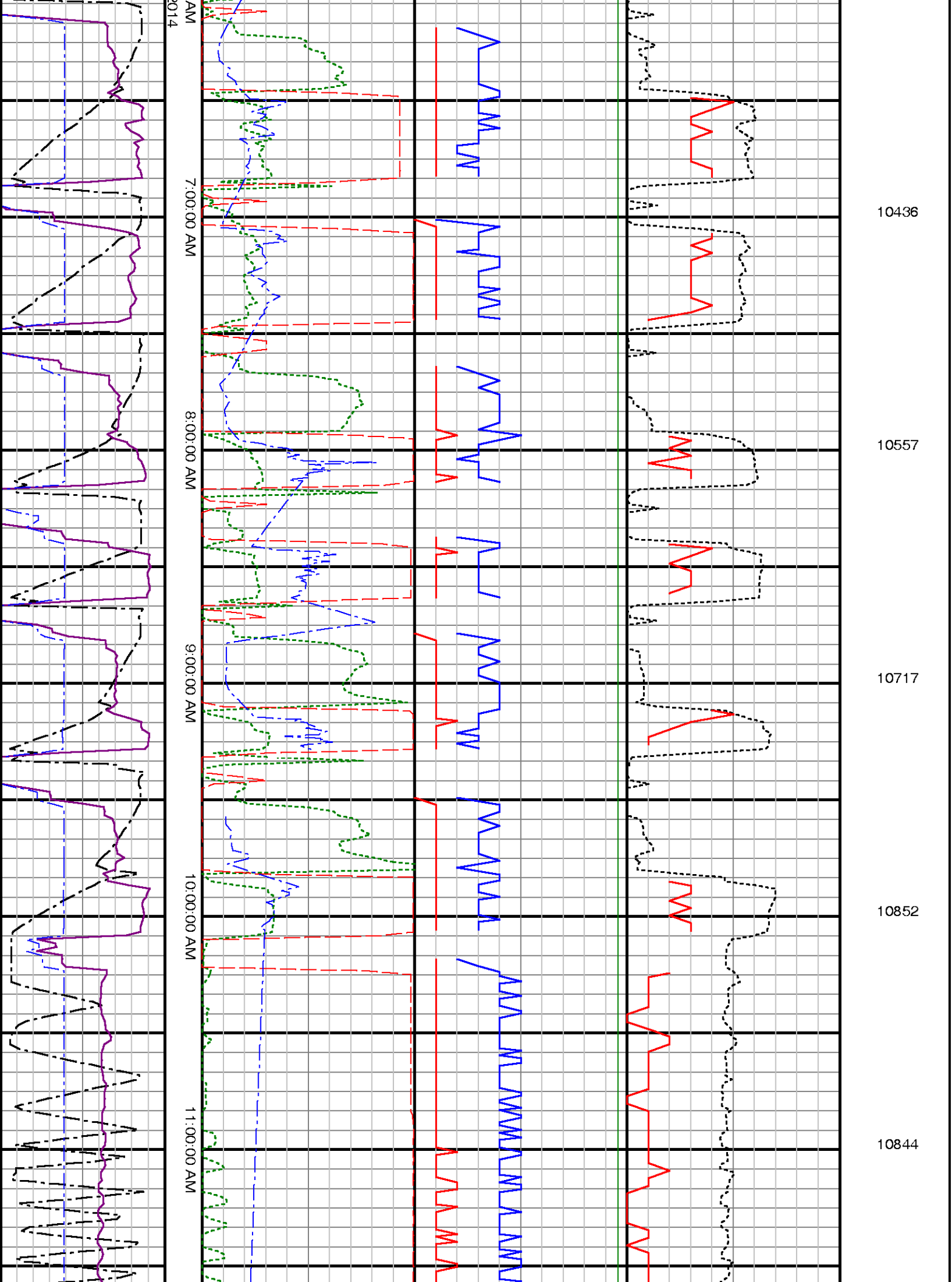


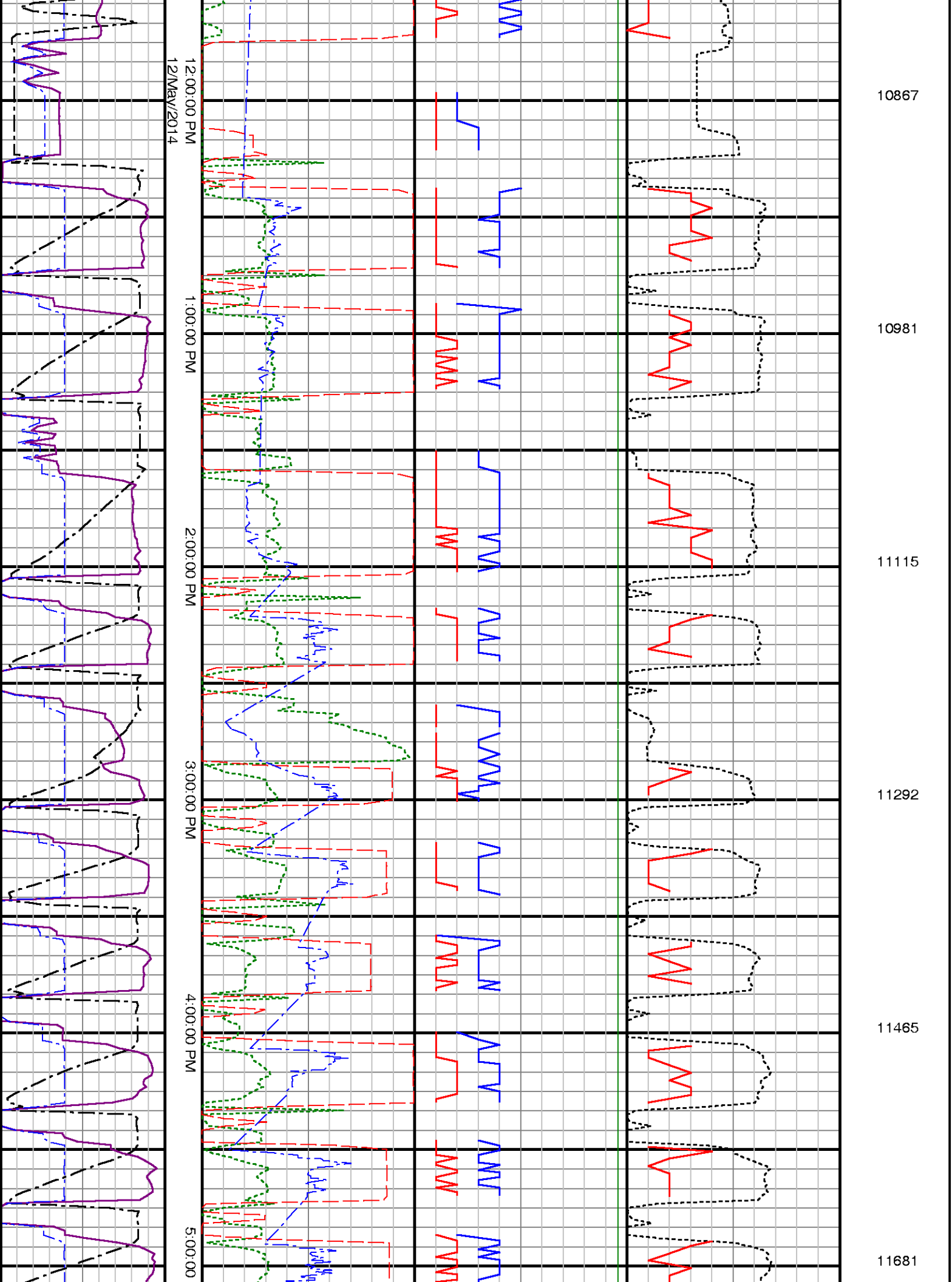












10867

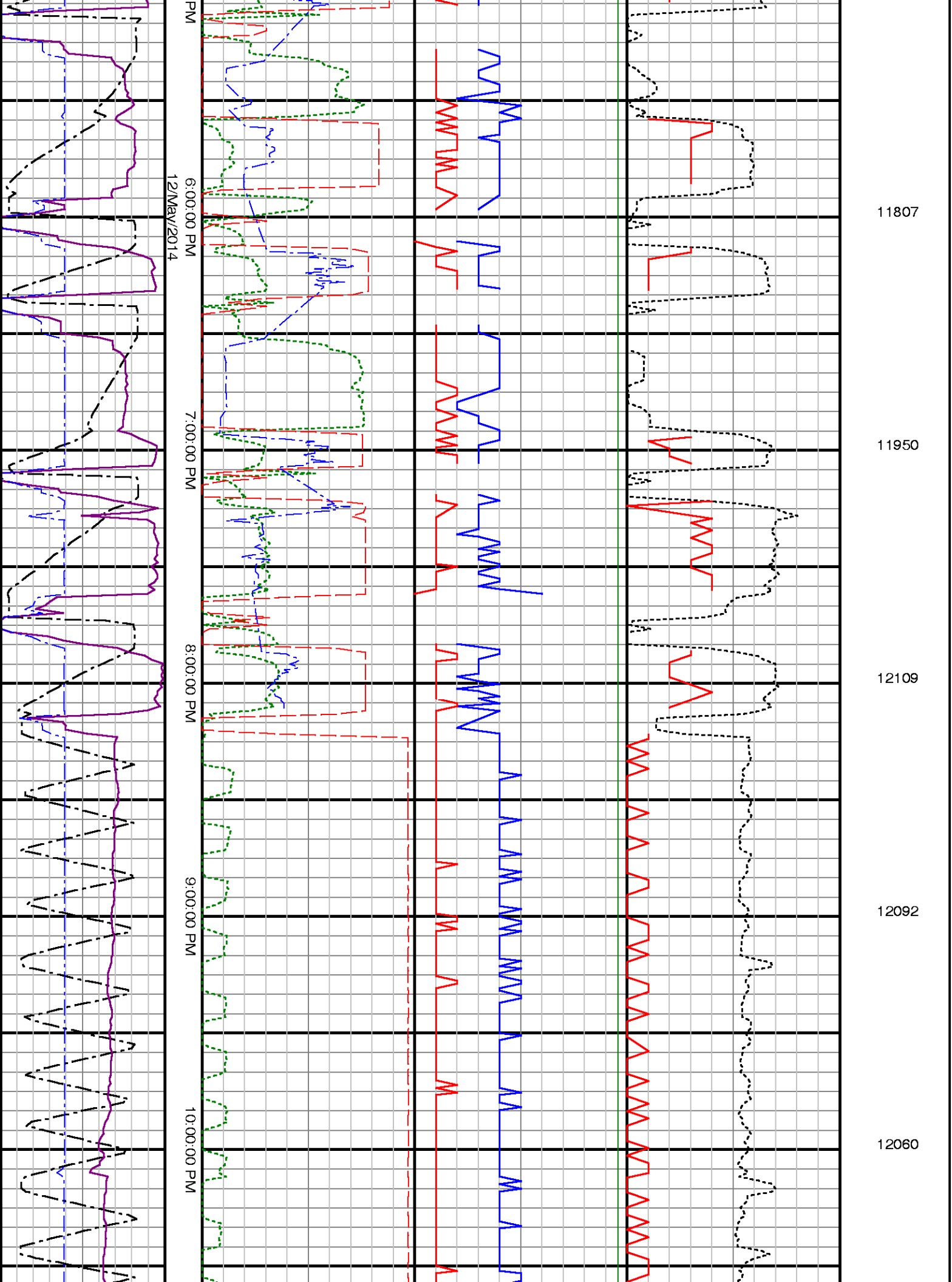
10981

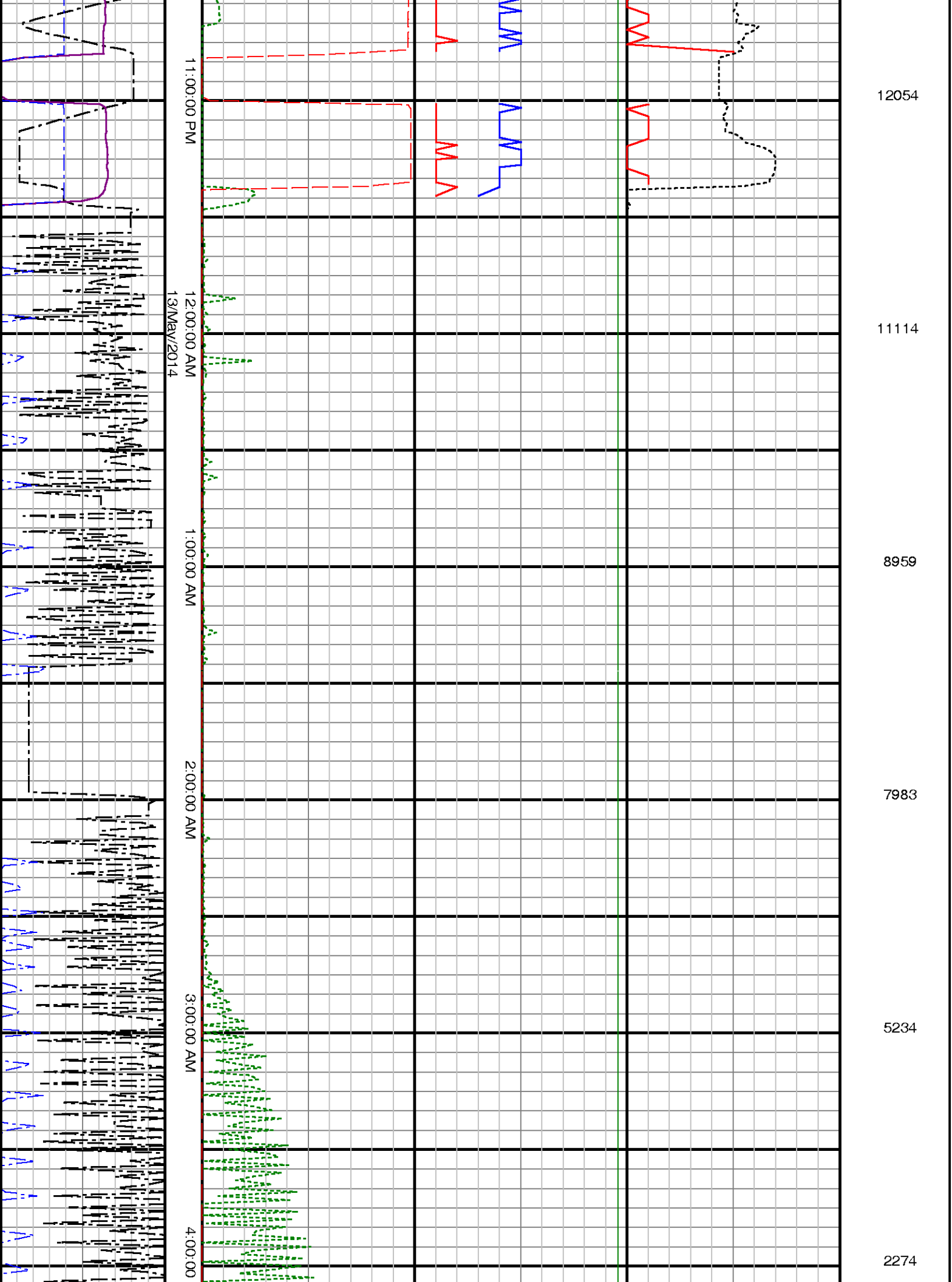
11115

11292

11465

11681





12054

11114

8959

7983

5234

2274

