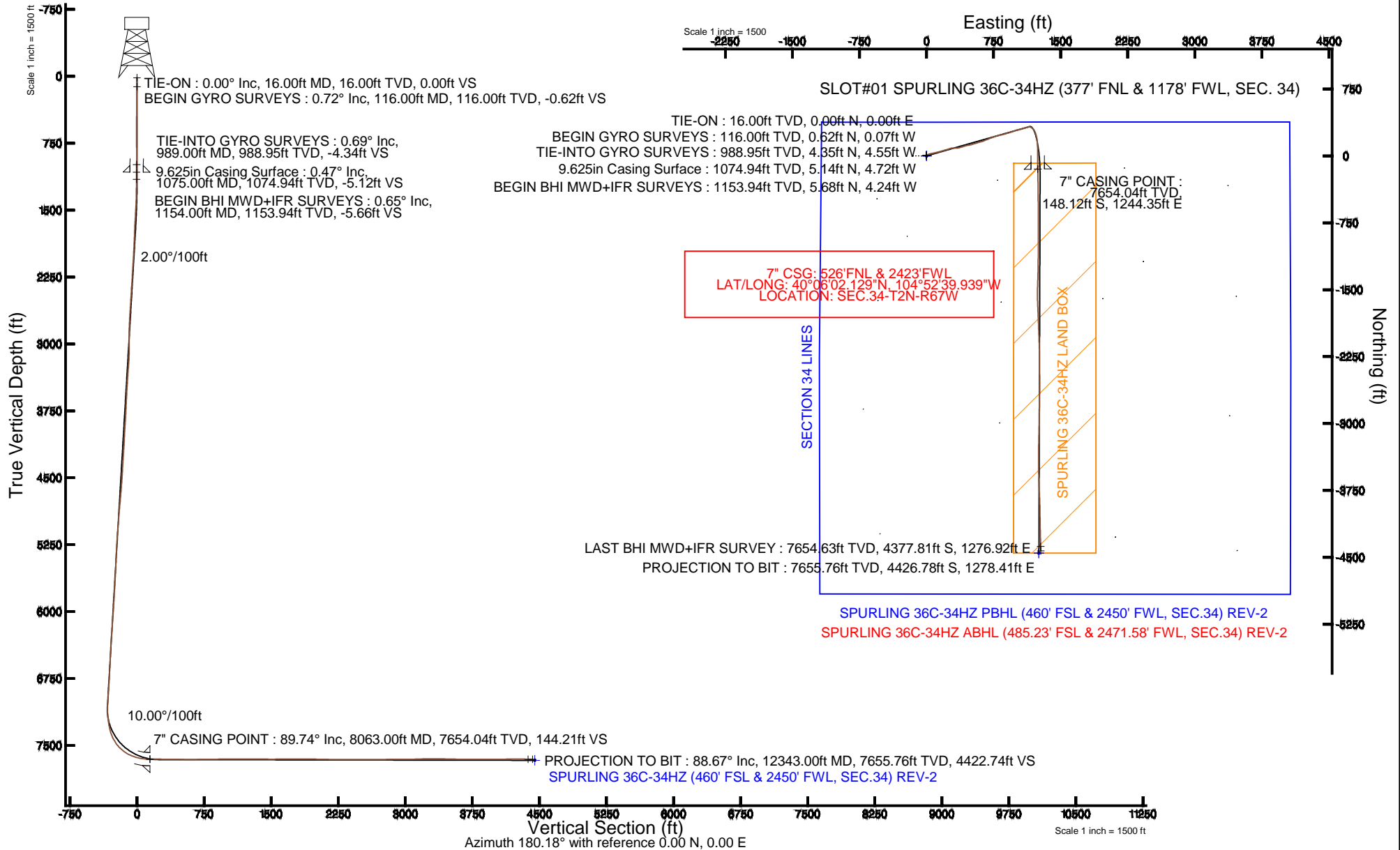


# KERR-MCGEE OIL & GAS ONSHORE LP

Location: COLORADO Slot: SLOT#01 SPURLING 36C-34HZ (377' FNL & 1178' FWL, SEC. 34)  
 Field: WELD COUNTY (KERR MCGEE) Well: SPURLING 36C-34HZ  
 Facility: SEC.34-T2N-R67W Wellbore: SPURLING 36C-34HZ PWB

Plot reference wellpath is SPURLING 36C-34HZ (REV-A.0) PWP

True vertical depths are referenced to XTREME 6 (16'RKB) (RKB)	Grid System: NAD83 / Lambert Colorado SP, Northern Zone (501), US feet
Measured depths are referenced to XTREME 6 (16'RKB) (RKB)	North Reference: True north
XTREME 6 (16'RKB) (RKB) to Mean Sea Level: 5029 feet	Scale: True distance
Mean Sea Level to Mud line (At Slot: SLOT#01 SPURLING 36C-34HZ (377' FNL & 1178' FWL, SEC. 34)): 0 feet	Depths are in feet
Coordinates are in feet referenced to Slot	Created by: wilsjef02 on 6/19/2014





# Actual Wellpath Report

SPURLING 36C-34HZ AWP

Page 1 of 6



## REFERENCE WELLPATH IDENTIFICATION

Operator	KERR-MCGEE OIL & GAS ONSHORE LP	Slot	SLOT#01 SPURLING 36C-34HZ (377' FNL & 1178' FWL, SEC. 34)
Area	COLORADO	Well	SPURLING 36C-34HZ
Field	WELD COUNTY (KERR MCGEE)	Wellbore	SPURLING 36C-34HZ AWB
Facility	SEC.34-T2N-R67W		

## REPORT SETUP INFORMATION

Projection System	NAD83 / Lambert Colorado SP, Northern Zone (501), US feet	Software System	WellArchitect® 4.0.0
North Reference	True	User	Wilsjef02
Scale	0.99996	Report Generated	6/19/2014 at 9:49:33 AM
Convergence at slot	n/a	Database/Source file	WellArchitectDB/SPURLING_36C-34HZ_AWB.xml

## WELLPATH LOCATION

	Local coordinates		Grid coordinates		Geographic coordinates	
	North[ft]	East[ft]	Easting[US ft]	Northing[US ft]	Latitude	Longitude
Slot Location	-0.00	-0.08	3172818.68	1280239.99	40°06'03.593"N	104°52'55.952"W
Facility Reference Pt			3172818.76	1280239.99	40°06'03.593"N	104°52'55.951"W
Field Reference Pt			3197771.84	1268891.29	40°04'09.600"N	104°47'36.000"W

## WELLPATH DATUM

Calculation method	Minimum curvature	XTREME 6 (16'RKB) (RKB) to Facility Vertical Datum	5029.00ft
Horizontal Reference Pt	Slot	XTREME 6 (16'RKB) (RKB) to Mean Sea Level	5029.00ft
Vertical Reference Pt	XTREME 6 (16'RKB) (RKB)	XTREME 6 (16'RKB) (RKB) to Mud Line at Slot (SLOT#01 SPURLING 36C-34HZ (377' FNL & 1178' FWL, SEC. 34))	5029.00ft
MD Reference Pt	XTREME 6 (16'RKB) (RKB)	Section Origin	N 0.00, E 0.00 ft
Field Vertical Reference	Mean Sea Level	Section Azimuth	163.89°

### REFERENCE WELLPATH IDENTIFICATION

Operator	KERR-MCGEE OIL & GAS ONSHORE LP	Slot	SLOT#01 SPURLING 36C-34HZ (377' FNL & 1178' FWL, SEC. 34)
Area	COLORADO	Well	SPURLING 36C-34HZ
Field	WELD COUNTY (KERR MCGEE)	Wellbore	SPURLING 36C-34HZ AWB
Facility	SEC.34-T2N-R67W		

### WELLPATH DATA (133 stations) † = interpolated/extrapolated station

MD [ft]	Inclination [°]	Azimuth [°]	TVD [ft]	Vert Sect [ft]	North [ft]	East [ft]	Latitude	Longitude	DLS [°/100ft]	Comments
0.00†	0.000	353.980	0.00	0.00	0.00	0.00	40°06'03.593"N	104°52'55.952"W	0.00	
16.00	0.000	353.980	16.00	0.00	0.00	0.00	40°06'03.593"N	104°52'55.952"W	0.00	TIE-ON
116.00	0.720	353.980	116.00	-0.62	0.62	-0.07	40°06'03.599"N	104°52'55.953"W	0.72	BEGIN GYRO SURVEYS
216.00	0.730	343.480	215.99	-1.87	1.86	-0.31	40°06'03.611"N	104°52'55.956"W	0.13	
316.00	0.720	317.050	315.98	-3.07	2.93	-0.92	40°06'03.622"N	104°52'55.964"W	0.33	
416.00	0.660	318.970	415.97	-4.15	3.83	-1.73	40°06'03.631"N	104°52'55.974"W	0.06	
516.00	0.680	299.350	515.97	-5.10	4.55	-2.62	40°06'03.638"N	104°52'55.986"W	0.23	
616.00	0.630	283.980	615.96	-5.80	4.97	-3.67	40°06'03.642"N	104°52'55.999"W	0.18	
716.00	0.700	231.110	715.96	-5.84	4.72	-4.68	40°06'03.640"N	104°52'56.012"W	0.60	
816.00	0.420	149.100	815.95	-5.25	4.03	-4.97	40°06'03.633"N	104°52'56.016"W	0.76	
916.00	0.350	60.520	915.95	-4.96	3.86	-4.52	40°06'03.631"N	104°52'56.010"W	0.54	
989.00	0.690	329.370	988.95	-5.44	4.35	-4.55	40°06'03.636"N	104°52'56.011"W	1.07	TIE-INTO GYRO SURVEYS
1154.00	0.650	59.650	1153.94	-6.63	5.68	-4.24	40°06'03.649"N	104°52'56.007"W	0.58	BEGIN BHI MWD+IFR SURVEYS
1248.00	2.330	72.330	1247.91	-6.82	6.53	-1.96	40°06'03.657"N	104°52'55.977"W	1.81	
1339.00	4.000	76.790	1338.76	-6.71	7.81	2.89	40°06'03.670"N	104°52'55.915"W	1.85	
1430.00	6.040	62.320	1429.41	-7.51	10.76	10.22	40°06'03.699"N	104°52'55.820"W	2.62	
1520.00	8.240	65.290	1518.71	-9.42	15.66	20.27	40°06'03.748"N	104°52'55.691"W	2.48	
1610.00	9.760	71.890	1607.60	-10.65	20.73	33.38	40°06'03.798"N	104°52'55.522"W	2.04	
1701.00	10.670	76.140	1697.16	-10.59	25.14	48.89	40°06'03.841"N	104°52'55.323"W	1.30	
1792.00	12.130	80.860	1786.36	-9.10	28.68	66.51	40°06'03.876"N	104°52'55.096"W	1.90	
1883.00	11.760	78.440	1875.39	-7.20	32.06	85.04	40°06'03.910"N	104°52'54.858"W	0.68	
1974.00	11.640	75.100	1964.50	-6.28	36.28	103.00	40°06'03.951"N	104°52'54.627"W	0.76	
2064.00	13.510	76.610	2052.34	-5.59	41.05	122.00	40°06'03.999"N	104°52'54.382"W	2.11	
2155.00	13.840	75.550	2140.76	-4.77	46.22	142.88	40°06'04.050"N	104°52'54.113"W	0.46	
2246.00	13.280	75.100	2229.23	-4.23	51.63	163.52	40°06'04.103"N	104°52'53.848"W	0.63	
2337.00	12.570	73.040	2317.92	-4.16	57.20	183.09	40°06'04.158"N	104°52'53.596"W	0.93	
2428.00	13.140	74.410	2406.64	-4.21	62.87	202.53	40°06'04.214"N	104°52'53.346"W	0.71	
2519.00	12.450	73.690	2495.38	-4.15	68.41	221.90	40°06'04.269"N	104°52'53.096"W	0.78	
2610.00	10.740	71.790	2584.52	-4.50	73.81	239.37	40°06'04.322"N	104°52'52.872"W	1.93	
2701.00	9.960	71.870	2674.04	-5.09	78.91	254.91	40°06'04.373"N	104°52'52.672"W	0.86	
2791.00	9.670	72.980	2762.72	-5.48	83.54	269.53	40°06'04.419"N	104°52'52.483"W	0.38	
2882.00	10.690	83.870	2852.29	-4.14	86.68	285.23	40°06'04.450"N	104°52'52.281"W	2.39	
2974.00	12.010	94.150	2942.50	0.65	86.90	303.27	40°06'04.452"N	104°52'52.049"W	2.62	
3064.00	13.600	91.520	3030.26	7.10	85.94	323.19	40°06'04.442"N	104°52'51.793"W	1.88	
3150.00	14.030	81.900	3113.79	11.62	87.14	343.62	40°06'04.454"N	104°52'51.530"W	2.71	
3235.00	13.840	74.400	3196.29	13.14	91.33	363.61	40°06'04.496"N	104°52'51.273"W	2.14	
3320.00	12.890	73.220	3278.99	13.12	96.80	382.48	40°06'04.550"N	104°52'51.030"W	1.16	
3405.00	13.210	73.610	3361.79	12.96	102.28	400.88	40°06'04.604"N	104°52'50.793"W	0.39	
3491.00	12.050	73.420	3445.71	12.84	107.61	418.91	40°06'04.656"N	104°52'50.561"W	1.35	
3576.00	12.330	73.540	3528.79	12.71	112.72	436.11	40°06'04.707"N	104°52'50.340"W	0.33	
3661.00	12.860	78.630	3611.75	13.44	117.15	454.09	40°06'04.751"N	104°52'50.108"W	1.45	
3746.00	13.720	81.460	3694.47	15.54	120.51	473.33	40°06'04.784"N	104°52'49.861"W	1.27	
3831.00	13.640	78.690	3777.06	17.71	123.98	493.13	40°06'04.818"N	104°52'49.606"W	0.78	
3916.00	12.030	70.910	3859.94	18.09	128.84	511.33	40°06'04.866"N	104°52'49.372"W	2.77	
4001.00	9.990	69.520	3943.37	17.07	134.32	526.61	40°06'04.920"N	104°52'49.175"W	2.42	

### REFERENCE WELLPATH IDENTIFICATION

Operator	KERR-MCGEE OIL & GAS ONSHORE LP	Slot	SLOT#01 SPURLING 36C-34HZ (377' FNL & 1178' FWL, SEC. 34)
Area	COLORADO	Well	SPURLING 36C-34HZ
Field	WELD COUNTY (KERR MCGEE)	Wellbore	SPURLING 36C-34HZ AWB
Facility	SEC.34-T2N-R67W		

### WELLPATH DATA (133 stations)

MD [ft]	Inclination [°]	Azimuth [°]	TVD [ft]	Vert Sect [ft]	North [ft]	East [ft]	Latitude	Longitude	DLS [°/100ft]	Comments
4086.00	10.080	76.290	4027.08	16.81	138.66	540.75	40°06'04.963"N	104°52'48.993"W	1.39	
4172.00	10.970	74.760	4111.63	17.25	142.60	555.95	40°06'05.002"N	104°52'48.798"W	1.08	
4257.00	11.750	72.160	4194.96	17.11	147.37	571.99	40°06'05.049"N	104°52'48.591"W	1.10	
4342.00	13.050	73.290	4277.98	16.75	152.78	589.42	40°06'05.103"N	104°52'48.367"W	1.56	
4428.00	12.300	74.300	4361.88	16.72	158.05	607.54	40°06'05.155"N	104°52'48.134"W	0.91	
4513.00	10.470	73.710	4445.21	16.76	162.67	623.67	40°06'05.200"N	104°52'47.926"W	2.16	
4598.00	10.640	66.640	4528.77	15.74	167.95	638.29	40°06'05.253"N	104°52'47.738"W	1.54	
4683.00	11.700	68.250	4612.16	13.90	174.25	653.50	40°06'05.315"N	104°52'47.542"W	1.30	
4769.00	12.730	69.370	4696.21	12.30	180.82	670.47	40°06'05.380"N	104°52'47.324"W	1.23	
4854.00	14.170	68.690	4778.88	10.62	187.91	688.93	40°06'05.450"N	104°52'47.086"W	1.70	
4937.00	13.840	68.310	4859.41	8.73	195.27	707.62	40°06'05.523"N	104°52'46.846"W	0.41	
5022.00	12.040	69.460	4942.25	7.06	202.13	725.36	40°06'05.590"N	104°52'46.617"W	2.14	
5108.00	12.230	69.060	5026.33	5.60	208.54	742.27	40°06'05.654"N	104°52'46.400"W	0.24	
5193.00	11.060	67.390	5109.58	3.91	214.89	758.21	40°06'05.716"N	104°52'46.195"W	1.43	
5278.00	12.240	73.310	5192.83	2.90	220.61	774.37	40°06'05.773"N	104°52'45.987"W	1.97	
5363.00	11.000	73.930	5276.09	2.81	225.44	790.79	40°06'05.821"N	104°52'45.776"W	1.47	
5448.00	11.490	76.840	5359.45	3.25	229.62	806.83	40°06'05.862"N	104°52'45.569"W	0.88	
5533.00	11.640	80.440	5442.73	4.67	232.97	823.53	40°06'05.895"N	104°52'45.354"W	0.87	
5618.00	11.820	76.700	5525.96	6.07	236.40	840.45	40°06'05.929"N	104°52'45.136"W	0.92	
5703.00	12.900	75.440	5608.98	6.75	240.78	858.11	40°06'05.972"N	104°52'44.909"W	1.31	
5789.00	11.290	74.710	5693.07	7.13	245.42	875.52	40°06'06.018"N	104°52'44.685"W	1.88	
5874.00	11.220	74.060	5776.44	7.28	249.88	891.50	40°06'06.062"N	104°52'44.480"W	0.17	
5959.00	11.460	72.970	5859.78	7.17	254.63	907.53	40°06'06.109"N	104°52'44.273"W	0.38	
6042.00	11.800	73.020	5941.07	6.90	259.52	923.53	40°06'06.157"N	104°52'44.067"W	0.41	
6126.00	11.990	70.870	6023.27	6.31	264.89	939.98	40°06'06.210"N	104°52'43.856"W	0.57	
6212.00	11.700	71.880	6107.44	5.54	270.53	956.71	40°06'06.266"N	104°52'43.640"W	0.41	
6295.00	12.680	70.360	6188.57	4.68	276.21	973.29	40°06'06.322"N	104°52'43.427"W	1.24	
6380.00	11.950	70.830	6271.61	3.63	282.23	990.39	40°06'06.382"N	104°52'43.207"W	0.87	
6465.00	11.400	70.260	6354.85	2.63	287.96	1006.61	40°06'06.438"N	104°52'42.998"W	0.66	
6550.00	11.020	77.640	6438.23	2.63	292.53	1022.45	40°06'06.484"N	104°52'42.794"W	1.74	
6636.00	10.940	82.260	6522.66	4.36	295.39	1038.57	40°06'06.512"N	104°52'42.587"W	1.03	
6721.00	11.340	75.460	6606.06	5.76	298.58	1054.65	40°06'06.543"N	104°52'42.380"W	1.61	
6806.00	11.520	70.820	6689.38	5.53	303.46	1070.75	40°06'06.592"N	104°52'42.173"W	1.10	
6890.00	11.000	73.670	6771.76	5.05	308.47	1086.37	40°06'06.641"N	104°52'41.972"W	0.91	
6976.00	11.070	71.770	6856.17	4.72	313.36	1102.08	40°06'06.689"N	104°52'41.770"W	0.43	
7061.00	11.370	75.720	6939.55	4.68	317.98	1117.95	40°06'06.735"N	104°52'41.565"W	0.97	
7146.00	12.510	70.270	7022.71	4.37	323.16	1134.74	40°06'06.786"N	104°52'41.349"W	1.88	
7188.00	11.190	77.190	7063.82	4.31	325.60	1143.00	40°06'06.810"N	104°52'41.243"W	4.61	
7231.00	10.160	92.200	7106.08	5.74	326.38	1150.86	40°06'06.818"N	104°52'41.142"W	6.87	
7274.00	10.410	111.210	7148.40	9.29	324.83	1158.27	40°06'06.803"N	104°52'41.046"W	7.88	
7316.00	11.460	121.250	7189.64	14.66	321.29	1165.37	40°06'06.768"N	104°52'40.955"W	5.17	
7359.00	13.460	124.730	7231.63	21.69	316.22	1173.14	40°06'06.718"N	104°52'40.855"W	4.97	
7401.00	15.300	128.990	7272.31	30.02	309.95	1181.47	40°06'06.656"N	104°52'40.748"W	5.05	
7445.00	17.900	133.400	7314.48	40.61	301.65	1190.89	40°06'06.574"N	104°52'40.627"W	6.56	
7487.00	21.600	142.250	7354.01	53.37	291.09	1200.32	40°06'06.469"N	104°52'40.505"W	11.30	

# Actual Wellpath Report

SPURLING 36C-34HZ AWP

Page 4 of 6

## REFERENCE WELLPATH IDENTIFICATION

Operator	KERR-MCGEE OIL & GAS ONSHORE LP	Slot	SLOT#01 SPURLING 36C-34HZ (377' FNL & 1178' FWL, SEC. 34)
Area	COLORADO	Well	SPURLING 36C-34HZ
Field	WELD COUNTY (KERR MCGEE)	Wellbore	SPURLING 36C-34HZ AWP
Facility	SEC.34-T2N-R67W		

## WELLPATH DATA (133 stations) † = interpolated/extrapolated station

MD [ft]	Inclination [°]	Azimuth [°]	TVD [ft]	Vert Sect [ft]	North [ft]	East [ft]	Latitude	Longitude	DLS [°/100ft]	Comments
7530.00	25.190	152.220	7393.48	69.70	276.73	1209.44	40°06'06.327"N	104°52'40.388"W	12.40	
7572.00	29.810	159.590	7430.74	88.88	259.02	1217.25	40°06'06.152"N	104°52'40.288"W	13.64	
7615.00	35.030	164.840	7467.03	111.89	237.07	1224.21	40°06'05.936"N	104°52'40.198"W	13.78	
7658.00	40.020	168.380	7501.13	138.04	211.60	1230.23	40°06'05.684"N	104°52'40.121"W	12.64	
7699.00	45.770	171.810	7531.15	165.75	184.12	1234.98	40°06'05.412"N	104°52'40.059"W	15.13	
7742.00	51.490	174.360	7559.57	197.59	152.10	1238.83	40°06'05.096"N	104°52'40.010"W	14.03	
7784.00	57.500	176.910	7583.95	231.04	118.03	1241.40	40°06'04.759"N	104°52'39.977"W	15.14	
7827.00	64.370	178.910	7604.83	267.47	80.49	1242.75	40°06'04.388"N	104°52'39.959"W	16.48	
7869.00	69.350	180.170	7621.33	304.65	41.89	1243.05	40°06'04.007"N	104°52'39.956"W	12.17	
7912.00	73.850	180.630	7634.90	343.76	1.10	1242.77	40°06'03.604"N	104°52'39.959"W	10.51	
7954.00	79.060	180.670	7644.73	382.84	-39.72	1242.30	40°06'03.200"N	104°52'39.965"W	12.41	
7996.00	84.090	178.660	7650.88	422.81	-81.25	1242.55	40°06'02.790"N	104°52'39.962"W	12.88	
8032.00	87.900	178.290	7653.40	457.56	-117.14	1243.51	40°06'02.435"N	104°52'39.950"W	10.63	
8063.00†	89.737	178.608	7654.04	487.55	-148.12	1244.35	40°06'02.129"N	104°52'39.939"W	6.01	7" CASING POINT
8072.00	90.270	178.700	7654.04	496.26	-157.12	1244.56	40°06'02.040"N	104°52'39.936"W	6.01	
8181.00	89.810	179.230	7653.96	601.51	-266.10	1246.53	40°06'00.963"N	104°52'39.911"W	0.64	
8267.00	89.380	179.150	7654.57	684.46	-352.09	1247.74	40°06'00.113"N	104°52'39.896"W	0.51	
8352.00	89.220	179.400	7655.61	766.41	-437.08	1248.82	40°05'59.273"N	104°52'39.882"W	0.35	
8523.00	90.060	179.710	7656.68	931.05	-608.07	1250.15	40°05'57.584"N	104°52'39.865"W	0.52	
8693.00	90.800	179.820	7655.40	1094.56	-778.06	1250.84	40°05'55.904"N	104°52'39.856"W	0.44	
8863.00	90.330	179.990	7653.73	1257.96	-948.05	1251.13	40°05'54.224"N	104°52'39.852"W	0.29	
9032.00	90.060	180.800	7653.15	1419.99	-1117.04	1249.96	40°05'52.554"N	104°52'39.867"W	0.51	
9202.00	89.840	180.990	7653.30	1582.56	-1287.02	1247.30	40°05'50.874"N	104°52'39.902"W	0.17	
9373.00	89.750	182.290	7653.91	1745.42	-1457.95	1242.41	40°05'49.185"N	104°52'39.965"W	0.76	
9543.00	90.460	177.850	7653.60	1908.64	-1627.90	1242.20	40°05'47.505"N	104°52'39.968"W	2.64	
9713.00	90.180	177.730	7652.65	2073.66	-1797.77	1248.76	40°05'45.827"N	104°52'39.883"W	0.18	
9883.00	89.380	177.820	7653.31	2238.70	-1967.64	1255.36	40°05'44.148"N	104°52'39.799"W	0.47	
10054.00	88.570	178.230	7656.36	2404.49	-2138.51	1261.25	40°05'42.460"N	104°52'39.723"W	0.53	
10221.00	90.730	180.280	7657.38	2565.50	-2305.48	1263.42	40°05'40.810"N	104°52'39.695"W	1.78	
10390.00	88.980	178.810	7657.81	2728.22	-2474.46	1264.76	40°05'39.140"N	104°52'39.678"W	1.35	
10560.00	90.860	181.020	7658.05	2891.60	-2644.44	1265.02	40°05'37.460"N	104°52'39.675"W	1.71	
10731.00	90.270	180.570	7656.36	3055.20	-2815.42	1262.64	40°05'35.770"N	104°52'39.705"W	0.43	
10901.00	90.120	180.990	7655.78	3217.87	-2985.40	1260.33	40°05'34.091"N	104°52'39.735"W	0.26	
11070.00	92.100	181.730	7652.51	3379.04	-3154.31	1256.32	40°05'32.421"N	104°52'39.787"W	1.25	
11241.00	89.690	180.070	7649.84	3542.52	-3325.25	1253.64	40°05'30.732"N	104°52'39.822"W	1.71	
11411.00	88.570	179.930	7652.42	3705.83	-3495.23	1253.64	40°05'29.052"N	104°52'39.822"W	0.66	
11582.00	90.000	177.420	7654.56	3871.14	-3666.15	1257.59	40°05'27.363"N	104°52'39.771"W	1.69	
11752.00	89.130	177.830	7655.85	4036.27	-3836.00	1264.63	40°05'25.685"N	104°52'39.680"W	0.57	
11921.00	90.950	179.300	7655.73	4199.75	-4004.93	1268.87	40°05'24.015"N	104°52'39.626"W	1.38	
12090.00	90.550	178.770	7653.52	4362.86	-4173.89	1271.71	40°05'22.346"N	104°52'39.590"W	0.39	
12261.00	89.130	178.390	7653.99	4528.27	-4344.83	1275.95	40°05'20.656"N	104°52'39.535"W	0.86	
12294.00	88.670	178.250	7654.63	4560.22	-4377.81	1276.92	40°05'20.330"N	104°52'39.523"W	1.46	LAST BHI MWD+IFR SURVEY
12343.00	88.670	178.250	7655.76	4607.68	-4426.78	1278.41	40°05'19.847"N	104°52'39.504"W	0.00	PROJECTION TO BIT



# Actual Wellpath Report

SPURLING 36C-34HZ AWP

Page 5 of 6



## REFERENCE WELLPATH IDENTIFICATION

Operator	KERR-MCGEE OIL & GAS ONSHORE LP	Slot	SLOT#01 SPURLING 36C-34HZ (377' FNL & 1178' FWL, SEC. 34)
Area	COLORADO	Well	SPURLING 36C-34HZ
Field	WELD COUNTY (KERR MCGEE)	Wellbore	SPURLING 36C-34HZ AWB
Facility	SEC.34-T2N-R67W		

## HOLE & CASING SECTIONS - Ref Wellbore: SPURLING 36C-34HZ AWB Ref Wellpath: SPURLING 36C-34HZ AWP

String/Diameter	Start MD [ft]	End MD [ft]	Interval [ft]	Start TVD [ft]	End TVD [ft]	Start N/S [ft]	Start E/W [ft]	End N/S [ft]	End E/W [ft]
13.5in Open Hole	16.00	1075.00	1059.00	16.00	1074.94	0.00	0.00	5.14	-4.72
9.625in Casing Surface	16.00	1075.00	1059.00	16.00	1074.94	0.00	0.00	5.14	-4.72
8.75in Open Hole	1075.00	8072.00	6997.00	1074.94	7654.04	5.14	-4.72	-157.12	1244.56
7in Casing Intermediate	16.00	8063.00	8047.00	16.00	7654.04	0.00	0.00	-148.12	1244.35
6.125in Open Hole	8063.00	12343.00	4280.00	7654.04	7655.76	-148.12	1244.35	-4426.78	1278.41

## TARGETS

Name	MD [ft]	TVD [ft]	North [ft]	East [ft]	Grid East [US ft]	Grid North [US ft]	Latitude	Longitude	Shape
SEC.34-T2N-R47W HARD LINES (460' SETBACKS)		5029.00	0.00	0.00	3172818.68	1280239.99	40°06'03.593"N	104°52'55.952"W	polygon
SEC.34-T2N-R67W SECTION LINES		5029.00	0.00	0.00	3172818.68	1280239.99	40°06'03.593"N	104°52'55.952"W	polygon
SPURLING 36C-34HZ (460' FSL & 2450' FWL, SEC.34) REV-1		7666.00	-4452.01	1256.83	3174106.44	1275797.03	40°05'19.597"N	104°52'39.781"W	point
SPURLING 36C-34HZ (460' FSL & 2450' FWL, SEC.34) REV-2		7667.00	-4452.01	1256.83	3174106.44	1275797.03	40°05'19.597"N	104°52'39.781"W	point
SPURLING 36C-34HZ LAND BOX		7700.00	0.00	0.00	3172818.68	1280239.99	40°06'03.593"N	104°52'55.952"W	polygon

## WELLPATH COMPOSITION - Ref Wellbore: SPURLING 36C-34HZ AWB Ref Wellpath: SPURLING 36C-34HZ AWP

Start MD [ft]	End MD [ft]	Positional Uncertainty Model	Log Name/Comment	Wellbore
16.00	989.00	Generic gyro - continuous (Standard)	MS GYRODATA SURVEYS <116-989>	SPURLING 36C-34HZ AWB
989.00	8032.00	NaviTrak (MAGCORR,IFR)	BHI MWD+IFR SURVEYS 8 3/4" HOLE <1154-8032>	SPURLING 36C-34HZ AWB
8032.00	12294.00	NaviTrak (MAGCORR,IFR)	BHI MWD+IFR SURVEYS 6 1/8" HOLE <8072-12294>	SPURLING 36C-34HZ AWB
12294.00	12343.00	Blind Drilling (std)	Projection to bit	SPURLING 36C-34HZ AWB



# Actual Wellpath Report

SPURLING 36C-34HZ AWP

Page 6 of 6



## REFERENCE WELLPATH IDENTIFICATION

Operator	KERR-MCGEE OIL & GAS ONSHORE LP	Slot	SLOT#01 SPURLING 36C-34HZ (377' FNL & 1178' FWL, SEC. 34)
Area	COLORADO	Well	SPURLING 36C-34HZ
Field	WELD COUNTY (KERR MCGEE)	Wellbore	SPURLING 36C-34HZ AWB
Facility	SEC.34-T2N-R67W		

## WELLPATH COMMENTS

MD [ft]	Inclination [°]	Azimuth [°]	TVD [ft]	Comment
16.00	0.000	353.980	16.00	TIE-ON
116.00	0.720	353.980	116.00	BEGIN GYRO SURVEYS
989.00	0.690	329.370	988.95	TIE-INTO GYRO SURVEYS
1154.00	0.650	59.650	1153.94	BEGIN BHI MWD+IFR SURVEYS
8063.00	89.737	178.608	7654.04	7" CASING POINT
12294.00	88.670	178.250	7654.63	LAST BHI MWD+IFR SURVEY
12343.00	88.670	178.250	7655.76	PROJECTION TO BIT