

**ANADARKO PETROLEUM CORP - EBUS
DO NOT MAIL - PO BOX 4995
THE WOODLANDS, Texas**

Brotemarkle 3C-13HZ

Majors 42

Post Job Summary **Cement Surface Casing**

Date Prepared: 5/30/2014
Version: 1

Service Supervisor: WHIPPLE, WESLEY

Submitted by: PRUDHOMME, JOSHUA

HALLIBURTON

HALLIBURTON

Wellbore Geometry

Job Tubulars					MD		Shoe Joint Length ft
Type	Description	Size in	ID in	Wt lbm/ft	Top ft	Bottom ft	
Casing	9 5/8" Surface Casing	9.63	8.921	36.00	0.00	1,313.00	45.00
Open Hole Section	13 1/2" Open Hole Section		13.500		0.00	1,313.00	0.00

HALLIBURTON

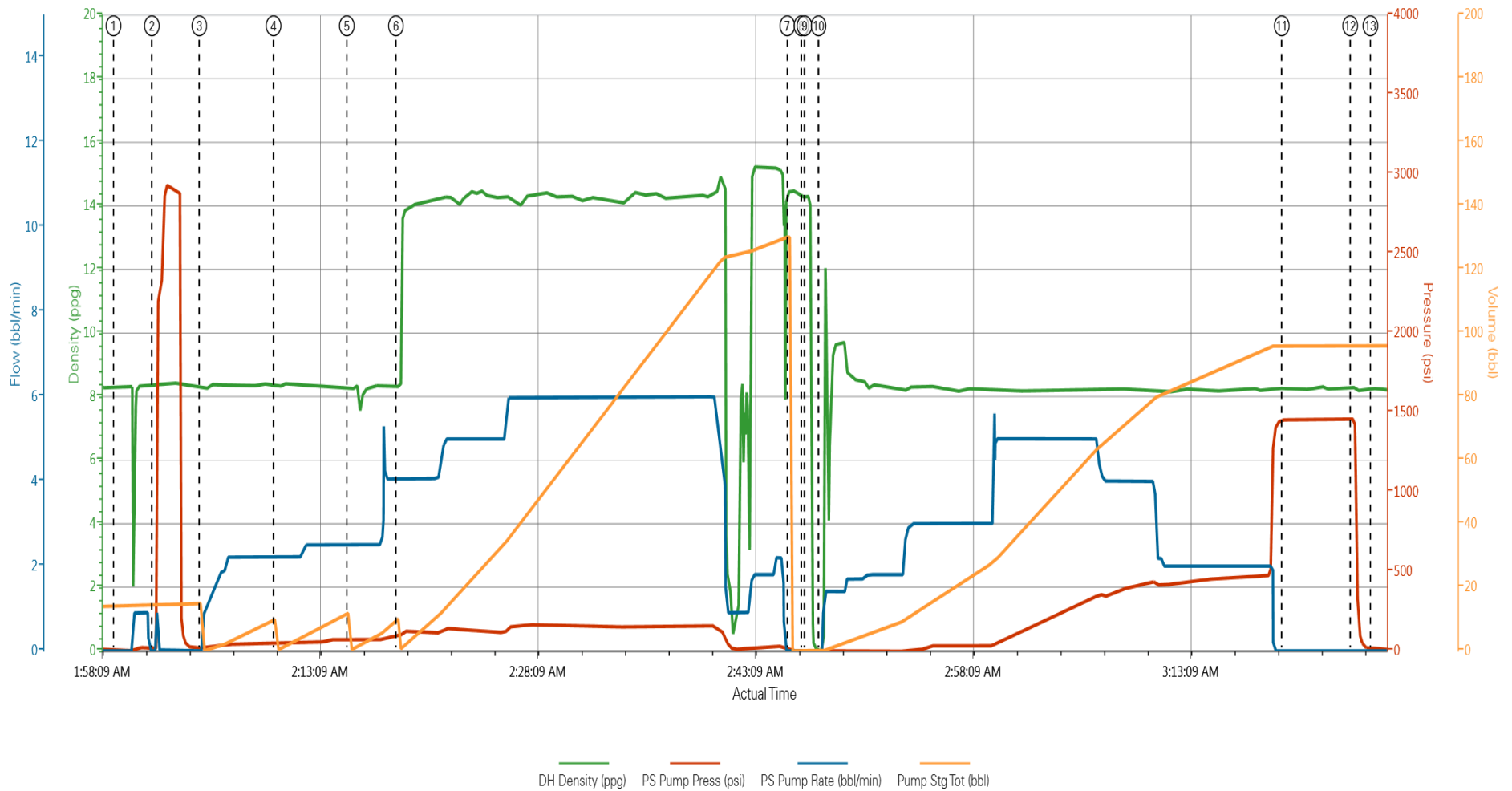
Pumping Schedule

Stage /Plug #	Fluid #	Fluid Type	Fluid Name	Surface Density lbm/gal	Avg Rate bbl/min	Surface Volume	Downhole Volume
1	1	Spacer	Fresh Water Spacer	8.33	2.0	10.0 bbl	10.0 bbl
1	2	Spacer	Mud Flush	8.40	2.5	12.0 bbl	12.0 bbl
1	1	Spacer	Fresh Water Spacer	8.33	2.5	10.0 bbl	10.0 bbl
1	3	Cement Slurry	SwiftCem B2	14.20	5.5	470.0 sacks	470.0 sacks

HALLIBURTON

Data Acquisition

ANADARKO BROTEMARKLE 3C-13HZ



① Start Job 8.29;2.0;13.9	④ Pump Spacer 2.8.3;47.2;2.0	⑦ Pump Cement 14.45;3.0;130.1	⑩ Pump Displacement -0.02;-1.0;0	⑬ End Job 8.24;10.0;96
② Test Lines 8.37;14.0;14.9	⑤ Pump Spacer 1.8.24;67.2;5.0	⑧ Shutdown 14.25;1.0;0	⑪ Bump Plug 8.29;1454.0;96	
③ Pump Spacer 1.8.32;18.0;14.9	⑥ Pump Cement 8.3.98;4.1;10.1	⑨ Drop Top Plug 14.3;1.0;0	⑫ Other 8.3;1460.0;96	

HALLIBURTON

Service Supervisor Reports

Job Log

Date/Time	Chart #	Activity Code	Pump Rate	Cum Vol	Pump		Pressure (psig)	Comments
01/16/2014 19:00		Call Out						CREW CALLED OUT BY ARS OFFICE @ 1900 REQUESTED ON LOCATION @2400
01/16/2014 22:10		Crew Leave Yard						CREW PRETRIPPED EQUIPMENT IN YARD TO ENSURE IN WORKING ORDER. HELD PRE JOURNEY SAFETY MEETING TO DISCUSS ROUTE AND POTENTIAL DRIVING HAZARDS
01/16/2014 22:40		Arrive At Loc						ARRIVED ON LOCATION AND MET WITH COMPANY REP TO DISCUSS JOB DETAILS. RIG HAD JUST BEGUN RUNNING CASING
01/16/2014 22:45		Rig-Up Equipment						COMMENCED RIG UP OF EQUIPMENT AND IRON. RIG UP COMPLETE @ 2300
01/17/2014 00:45		Casing on Bottom						RIG LANDED CASING ON BOTTOM. CIRCULATED HOLE FOR AN HOUR
01/17/2014 01:45		Safety Meeting						HELD PRE JOB SAFETY MEETING WITH ALL HANDS ON LOCATION TO DISCUSS JOB PROCESS, PROCEDURES AND POTENTIAL RISKS THAT COULD OCCUR DURING CEMENTING
01/17/2014 02:01		Start Job						
01/17/2014 02:03		Test Lines					3000.0	PRESSURE TESTED PUMPS AND LINES TO 3000PSI, FOUND NO LEAKS IN IRON AND PRESSURE HELD
01/17/2014 02:07		Pump Spacer 1	2	10			45.0	PUMP FRESH WATER SPACER
01/17/2014 02:12		Pump Spacer 2	2.5	12			56.0	PUMP MUD FLUSH SPACER
01/17/2014 02:17		Pump Spacer 1	2.5	10			98.0	PUMP FRESH WATER SPACER
01/17/2014 02:20		Pump Cement	5.5	128.9			160.0	MIX PUMP 470 SKS OF SWIFTCES @ 14.2PPG. DENSITY VERIFIED BY PRESSURIZED MUD SCALES
01/17/2014 02:46		Shutdown						
01/17/2014 02:47		Drop Top Plug						DROP TOP PLUG FROM HES PLUG CONTAINER, WITNESSED BY COMPANY REP AND HES SUPERVISOR
01/17/2014 02:48		Pump Displacement	4	98			490.0	PUMP FRESH WATER DISPLACEMENT
01/17/2014 03:19		Bump Plug					450.0	BUMP PLUG 1000PSI OVER FINAL PUMPING PRESSURE. HELD PRESSURE @1455 . RECIEVED CEMENT BACK TO SURFACE @80 BBLs AWAY
01/17/2014 03:24		Check Floats					1455.0	RELEASED PRESSURE BACK TO PUMP TRUCK, RECIEVED 1 BBL BACK AND FLOATS HELD
01/17/2014 03:25		End Job						COMMENCE RIG DOWN OF EQUIPMENT, WET AND DRY CEMENT SAMPLES WERE LEFT ON LOCATION

The Road to Excellence Starts with Safety

Sold To #: 300466	Ship To #: 3117127	Quote #:	Sales Order #: 901044880
Customer: ANADARKO PETROLEUM CORP - EBUS		Customer Rep: Porter, Bob	
Well Name: Brotemarkle		Well #: 3C-13HZ	API/UWI #: 05-123-36394
Field: WATTENBERG	City (SAP): PLATTEVILLE	County/Parish: Weld	State: Colorado
Lat: N 40.219 deg. OR N 40 deg. 13 min. 8.4 secs.		Long: W 104.727 deg. OR W -105 deg. 16 min. 22.8 secs.	
Contractor: Majors		Rig/Platform Name/Num: Majors 42	
Job Purpose: Cement Surface Casing			
Well Type: Development Well		Job Type: Cement Surface Casing	
Sales Person: PLIENESS, RYAN		Srvc Supervisor: WHIPPLE, WESLEY	MBU ID Emp #: 518611

Job Personnel

HES Emp Name	Exp Hrs	Emp #	HES Emp Name	Exp Hrs	Emp #	HES Emp Name	Exp Hrs	Emp #
BARNES, BRIAN L	5.3	485204	MILLS, CHUCK	5.3	77772	ROBINSON, TROY	5.3	77771
WHIPPLE, WESLEY Morgan	5.3	518611						

Equipment

HES Unit #	Distance-1 way	HES Unit #	Distance-1 way	HES Unit #	Distance-1 way	HES Unit #	Distance-1 way
11036295	18 mile	11566182	18 mile	11645065	18 mile	11812069C	18 mile
12010172	18 mile						

Job

Job Times

Formation Name				Date	Time	Time Zone
Formation Depth (MD)	Top		Bottom	Called Out	16 - Jan - 2014	19:00 MST
Form Type	BHST			On Location	16 - Jan - 2014	22:40 MST
Job depth MD	1313. ft			Job Started	17 - Jan - 2014	02:01 MST
Water Depth	Wk Ht Above Floor			Job Completed	17 - Jan - 2014	03:25 MST
Perforation Depth (MD)	From		To	Departed Loc	17 - Jan - 2014	04:00 MST

Well Data

Description	New / Used	Max pressure psig	Size in	ID in	Weight lbm/ft	Thread	Grade	Top MD ft	Bottom MD ft	Top TVD ft	Bottom TVD ft
13 1/2" Open Hole Section				13.5				.	1313.		
9 5/8" Surface Casing	Unknown		9.625	8.921	36.		J-55	.	1313.		

Sales/Rental/3rd Party (HES)

Description	Qty	Qty uom	Depth	Supplier
CMT CASING EQUIPMENT BOM	1	JOB		
MILEAGE FOR CEMENTING CREW,ZI	40	MI		
Description	Qty	Qty uom	Depth	Supplier
ZI FUEL SURCHG-CARS/PICKUPS<1 1/2TON	40	MI		
KIT,HALL WELD-A	1	EA		
CNTRLZR, 9 5/8"x13 3/4',#500-0963-1375	6	EA		
BASKET - CEMENT - 9-5/8 CSG X 12-1/4	1	EA		
PLUG,CMTG,TOP,9 5/8,HWE,8.16 MIN/9.06 MA	1	EA		

COLLAR-STOP-9 5/8"-FRICTION-HINGED						2	EA		
Fluid Data									
Stage/Plug #: 1									
Fluid #	Stage Type	Fluid Name	Qty	Qty uom	Mixing Density lbm/gal	Yield ft ³ /sk	Mix Fluid Gal/sk	Rate bbl/min	Total Mix Fluid Gal/sk
1	Fresh Water Spacer		10.00	bbl	8.33			2.0	
2	Mud Flush		12.00	bbl	8.40			2.5	
1	Fresh Water Spacer		10.00	bbl	8.33			2.5	
3	SwiftCem B2	SWIFTCem (TM) SYSTEM (452990)	470.0	sacks	14.2	1.54	7.66	5.5	7.66
7.66 Gal		FRESH WATER							
Calculated Values		Pressures		Volumes					
Displacement		Shut In: Instant		Lost Returns		Cement Slurry		Pad	
Top Of Cement		5 Min		Cement Returns		Actual Displacement		Treatment	
Frac Gradient		15 Min		Spacers		Load and Breakdown		Total Job	
Rates									
Circulating		Mixing		Displacement		Avg. Job			
Cement Left In Pipe		Amount	45 ft	Reason	Shoe Joint				
Frac Ring # 1 @	ID	Frac ring # 2 @	ID	Frac Ring # 3 @	ID	Frac Ring # 4 @	ID		
The Information Stated Herein Is Correct				Customer Representative Signature					

