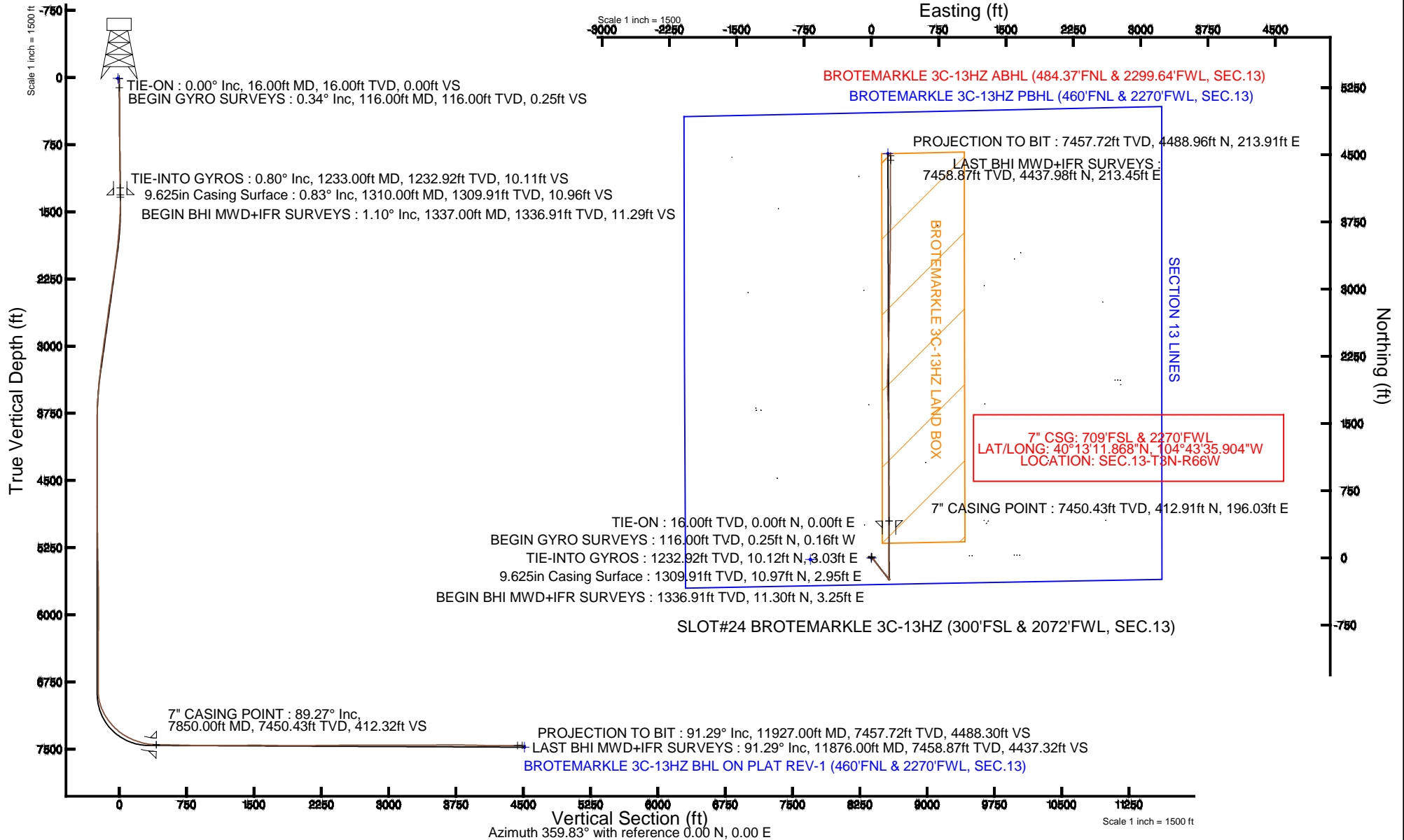


KERR-MCGEE OIL & GAS ONSHORE LP

Location: COLORADO Slot: SLOT#24 BROTEMARKLE 3C-13HZ (300'FSL & 2072'FWL, SEC.13)
 Field: WELD COUNTY (KERR MCGEE) Well: BROTEMARKLE 3C-13HZ
 Facility: SEC.13-T3N-R66W Wellbore: BROTEMARKLE 3C-13HZ PWB

Plot reference wellpath is BROTEMARKLE 3C-13HZ (REV-A.0) PWP

True vertical depths are referenced to XTREME 6 (16' RKB) (RKB)	Grid System: NAD83 / Lambert Colorado SP, Northern Zone (501), US feet
Measured depths are referenced to XTREME 6 (16' RKB) (RKB)	North Reference: True north
XTREME 6 (16' RKB) (RKB) to Mean Sea Level: 5048 feet	Scale: True distance
Mean Sea Level to Mud line (At Slot: SLOT#24 BROTEMARKLE 3C-13HZ (300'FSL & 2072'FWL, SEC.13)): 0 feet	Depths are in feet
Coordinates are in feet referenced to Slot	Created by: wilsje02 on 4/28/2014





Actual Wellpath Report

BROTEMARKLE 3C-13HZ AWP

Page 1 of 6



REFERENCE WELLPATH IDENTIFICATION

Operator	KERR-MCGEE OIL & GAS ONSHORE LP	Slot	SLOT#24 BROTEMARKLE 3C-13HZ (300'FSL & 2072'FWL, SEC.13)
Area	COLORADO	Well	BROTEMARKLE 3C-13HZ
Field	WELD COUNTY (KERR MCGEE)	Wellbore	BROTEMARKLE 3C-13HZ AWB
Facility	SEC.13-T3N-R66W		

REPORT SETUP INFORMATION

Projection System	NAD83 / Lambert Colorado SP, Northern Zone (501), US feet	Software System	WellArchitect® 4.0.0
North Reference	True	User	Wilsjef02
Scale	0.999957	Report Generated	4/28/2014 at 1:14:44 PM
Convergence at slot	n/a	Database/Source file	WellArchitectDB/BROTEMARKLE_3C-13HZ_AWB.xml

WELLPATH LOCATION

	Local coordinates		Grid coordinates		Geographic coordinates	
	North[ft]	East[ft]	Easting[US ft]	Northing[US ft]	Latitude	Longitude
Slot Location	-382.48	-1285.17	3215765.61	1323501.95	40°13'07.788"N	104°43'38.431"W
Facility Reference Pt			3217047.32	1323895.67	40°13'11.568"N	104°43'21.864"W
Field Reference Pt			3197771.84	1268891.29	40°04'09.600"N	104°47'36.000"W

WELLPATH DATUM

Calculation method	Minimum curvature	XTREME 6 (16' RKB) (RKB) to Facility Vertical Datum	5048.00ft
Horizontal Reference Pt	Slot	XTREME 6 (16' RKB) (RKB) to Mean Sea Level	5048.00ft
Vertical Reference Pt	XTREME 6 (16' RKB) (RKB)	XTREME 6 (16' RKB) (RKB) to Mud Line at Slot (SLOT#24 BROTEMARKLE 3C-13HZ (300'FSL & 2072'FWL, SEC.13))	5048.00ft
MD Reference Pt	XTREME 6 (16' RKB) (RKB)	Section Origin	N 0.00, E 0.00 ft
Field Vertical Reference	Mean Sea Level	Section Azimuth	2.73°



Actual Wellpath Report

BROTEMARKLE 3C-13HZ AWP

Page 2 of 6



REFERENCE WELLPATH IDENTIFICATION

Operator	KERR-MCGEE OIL & GAS ONSHORE LP	Slot	SLOT#24 BROTEMARKLE 3C-13HZ (300'FSL & 2072'FWL, SEC.13)
Area	COLORADO	Well	BROTEMARKLE 3C-13HZ
Field	WELD COUNTY (KERR MCGEE)	Wellbore	BROTEMARKLE 3C-13HZ AWB
Facility	SEC.13-T3N-R66W		

WELLPATH DATA (110 stations) † = interpolated/extrapolated station

MD [ft]	Inclination [°]	Azimuth [°]	TVD [ft]	Vert Sect [ft]	North [ft]	East [ft]	Latitude	Longitude	DLS [°/100ft]	Comments
0.00†	0.000	327.170	0.00	0.00	0.00	0.00	40°13'07.788"N	104°43'38.431"W	0.00	
16.00	0.000	327.170	16.00	0.00	0.00	0.00	40°13'07.788"N	104°43'38.431"W	0.00	TIE-ON
116.00	0.340	327.170	116.00	0.24	0.25	-0.16	40°13'07.790"N	104°43'38.433"W	0.34	BEGIN GYRO SURVEYS
216.00	0.660	20.210	216.00	1.03	1.04	-0.12	40°13'07.798"N	104°43'38.433"W	0.53	
316.00	0.840	52.500	315.99	2.05	2.03	0.66	40°13'07.808"N	104°43'38.423"W	0.45	
416.00	0.710	64.870	415.98	2.82	2.74	1.80	40°13'07.815"N	104°43'38.408"W	0.21	
516.00	0.540	90.420	515.97	3.13	2.99	2.83	40°13'07.818"N	104°43'38.394"W	0.32	
616.00	0.310	309.530	615.97	3.31	3.16	3.09	40°13'07.819"N	104°43'38.391"W	0.80	
716.00	1.200	342.760	715.96	4.45	4.34	2.58	40°13'07.831"N	104°43'38.398"W	0.96	
816.00	1.050	41.500	815.95	6.15	6.02	2.87	40°13'07.848"N	104°43'38.394"W	1.11	
916.00	0.220	292.600	915.94	6.93	6.78	3.30	40°13'07.855"N	104°43'38.388"W	1.14	
1016.00	1.210	346.250	1015.93	8.01	7.88	2.87	40°13'07.866"N	104°43'38.394"W	1.09	
1116.00	0.640	53.540	1115.92	9.37	9.24	3.07	40°13'07.879"N	104°43'38.391"W	1.13	
1216.00	0.610	318.620	1215.92	10.11	9.97	3.17	40°13'07.887"N	104°43'38.390"W	0.92	
1233.00	0.800	314.910	1232.92	10.25	10.12	3.03	40°13'07.888"N	104°43'38.392"W	1.15	TIE-INTO GYROS
1337.00	1.100	47.940	1336.91	11.45	11.30	3.25	40°13'07.900"N	104°43'38.389"W	1.34	BEGIN BHI MWD+IFR SURVEYS
1428.00	1.200	126.290	1427.89	11.53	11.32	4.67	40°13'07.900"N	104°43'38.371"W	1.60	
1519.00	2.700	147.130	1518.84	9.26	8.96	6.60	40°13'07.877"N	104°43'38.346"W	1.80	
1609.00	4.260	154.850	1608.67	4.59	4.15	9.17	40°13'07.829"N	104°43'38.313"W	1.81	
1700.00	5.830	146.990	1699.32	-2.15	-2.78	13.13	40°13'07.761"N	104°43'38.262"W	1.88	
1792.00	6.290	139.830	1790.80	-9.64	-10.55	18.92	40°13'07.684"N	104°43'38.187"W	0.96	
1884.00	7.250	141.850	1882.16	-17.72	-18.97	25.76	40°13'07.601"N	104°43'38.099"W	1.07	
1976.00	8.600	142.520	1973.28	-27.36	-28.99	33.53	40°13'07.502"N	104°43'37.999"W	1.47	
2066.00	9.130	144.830	2062.20	-38.14	-40.17	41.74	40°13'07.391"N	104°43'37.893"W	0.71	
2158.00	10.690	146.140	2152.83	-50.75	-53.22	50.70	40°13'07.262"N	104°43'37.777"W	1.71	
2249.00	10.410	146.390	2242.29	-64.15	-67.08	59.95	40°13'07.125"N	104°43'37.658"W	0.31	
2340.00	9.420	142.990	2331.93	-76.50	-79.87	68.99	40°13'06.999"N	104°43'37.542"W	1.26	
2430.00	11.000	143.380	2420.50	-88.80	-92.65	78.54	40°13'06.872"N	104°43'37.419"W	1.76	
2611.00	9.740	142.010	2598.54	-113.76	-118.57	98.27	40°13'06.616"N	104°43'37.164"W	0.71	
2788.00	10.770	138.830	2772.72	-137.03	-142.82	118.37	40°13'06.377"N	104°43'36.905"W	0.66	
2958.00	10.500	139.040	2939.79	-159.67	-166.48	138.98	40°13'06.143"N	104°43'36.639"W	0.16	
3128.00	10.400	138.840	3106.98	-181.93	-189.73	159.23	40°13'05.913"N	104°43'36.378"W	0.06	
3213.00	9.350	136.920	3190.71	-192.27	-200.55	169.00	40°13'05.806"N	104°43'36.252"W	1.29	
3298.00	8.220	146.650	3274.72	-202.00	-210.67	177.06	40°13'05.706"N	104°43'36.149"W	2.19	
3383.00	6.960	150.450	3358.98	-211.26	-220.22	182.94	40°13'05.612"N	104°43'36.073"W	1.59	
3469.00	5.260	151.230	3444.48	-219.03	-228.21	187.41	40°13'05.533"N	104°43'36.015"W	1.98	
3554.00	4.680	153.580	3529.16	-225.38	-234.73	190.82	40°13'05.468"N	104°43'35.971"W	0.72	
3640.00	3.700	146.460	3614.93	-230.68	-240.19	193.92	40°13'05.414"N	104°43'35.931"W	1.29	
3725.00	1.430	139.670	3699.84	-233.67	-243.28	196.12	40°13'05.384"N	104°43'35.903"W	2.69	
3810.00	0.950	71.060	3784.83	-234.19	-243.86	197.47	40°13'05.378"N	104°43'35.885"W	1.65	
3980.00	0.620	77.810	3954.81	-233.43	-243.21	199.71	40°13'05.385"N	104°43'35.857"W	0.20	
4150.00	0.750	98.090	4124.80	-233.30	-243.17	201.71	40°13'05.385"N	104°43'35.831"W	0.16	
4320.00	1.000	112.530	4294.78	-233.90	-243.90	204.18	40°13'05.378"N	104°43'35.799"W	0.19	
4490.00	0.120	136.970	4464.77	-234.53	-244.60	205.67	40°13'05.371"N	104°43'35.780"W	0.52	
4660.00	0.270	163.130	4634.77	-235.03	-245.11	205.91	40°13'05.366"N	104°43'35.777"W	0.10	



Actual Wellpath Report

BROTEMARKLE 3C-13HZ AWP



REFERENCE WELLPATH IDENTIFICATION

Operator	KERR-MCGEE OIL & GAS ONSHORE LP	Slot	SLOT#24 BROTEMARKLE 3C-13HZ (300'FSL & 2072'FWL, SEC.13)
Area	COLORADO	Well	BROTEMARKLE 3C-13HZ
Field	WELD COUNTY (KERR MCGEE)	Wellbore	BROTEMARKLE 3C-13HZ AWB
Facility	SEC.13-T3N-R66W		

WELLPATH DATA (110 stations) † = interpolated/extrapolated station

MD [ft]	Inclination [°]	Azimuth [°]	TVD [ft]	Vert Sect [ft]	North [ft]	East [ft]	Latitude	Longitude	DLS [°/100ft]	Comments
4830.00	0.030	8.790	4804.77	-235.36	-245.45	206.03	40°13'05.362"N	104°43'35.775"W	0.17	
4999.00	0.730	355.680	4973.76	-234.25	-244.33	205.96	40°13'05.374"N	104°43'35.776"W	0.41	
5169.00	1.010	313.950	5143.75	-232.19	-242.21	204.80	40°13'05.394"N	104°43'35.791"W	0.40	
5340.00	1.250	320.960	5314.71	-229.80	-239.72	202.54	40°13'05.419"N	104°43'35.820"W	0.16	
5510.00	1.710	330.980	5484.66	-226.26	-236.06	200.14	40°13'05.455"N	104°43'35.851"W	0.31	
5681.00	0.410	9.680	5655.62	-223.49	-233.22	199.00	40°13'05.483"N	104°43'35.866"W	0.83	
5852.00	0.520	317.590	5826.62	-222.33	-232.05	198.58	40°13'05.495"N	104°43'35.871"W	0.25	
6023.00	0.760	247.050	5997.61	-222.28	-231.92	197.01	40°13'05.496"N	104°43'35.891"W	0.45	
6193.00	0.560	230.920	6167.60	-223.32	-232.88	195.33	40°13'05.487"N	104°43'35.913"W	0.16	
6364.00	0.530	248.140	6338.59	-224.21	-233.70	193.95	40°13'05.479"N	104°43'35.931"W	0.10	
6534.00	0.450	266.810	6508.59	-224.60	-234.03	192.55	40°13'05.475"N	104°43'35.949"W	0.10	
6705.00	0.600	269.850	6679.58	-224.72	-234.07	190.99	40°13'05.475"N	104°43'35.969"W	0.09	
6833.00	0.440	255.950	6807.57	-224.89	-234.19	189.84	40°13'05.474"N	104°43'35.984"W	0.16	
6876.00	1.000	275.750	6850.57	-224.92	-234.20	189.31	40°13'05.474"N	104°43'35.991"W	1.41	
6918.00	3.550	15.480	6892.54	-223.63	-232.91	189.29	40°13'05.486"N	104°43'35.991"W	9.16	
6961.00	9.840	11.910	6935.23	-218.70	-228.02	190.40	40°13'05.535"N	104°43'35.977"W	14.65	
7004.00	15.700	9.430	6977.15	-209.29	-218.68	192.12	40°13'05.627"N	104°43'35.954"W	13.68	
7046.00	19.420	5.430	7017.18	-196.66	-206.12	193.71	40°13'05.751"N	104°43'35.934"W	9.31	
7089.00	22.960	1.850	7057.27	-181.13	-190.61	194.66	40°13'05.904"N	104°43'35.922"W	8.76	
7131.00	26.970	0.410	7095.34	-163.42	-172.89	194.99	40°13'06.079"N	104°43'35.917"W	9.66	
7174.00	31.800	1.060	7132.80	-142.34	-151.80	195.27	40°13'06.288"N	104°43'35.914"W	11.26	
7216.00	34.940	358.550	7167.87	-119.27	-128.71	195.17	40°13'06.516"N	104°43'35.915"W	8.17	
7259.00	38.430	358.540	7202.35	-93.66	-103.03	194.52	40°13'06.770"N	104°43'35.924"W	8.12	
7301.00	42.220	358.440	7234.36	-66.56	-75.87	193.80	40°13'07.038"N	104°43'35.933"W	9.03	
7344.00	46.620	359.470	7265.07	-36.53	-45.78	193.26	40°13'07.336"N	104°43'35.940"W	10.37	
7387.00	49.900	359.860	7293.69	-4.50	-13.70	193.08	40°13'07.653"N	104°43'35.942"W	7.66	
7429.00	54.040	0.870	7319.56	28.55	19.37	193.30	40°13'07.979"N	104°43'35.939"W	10.04	
7472.00	57.380	0.890	7343.78	64.05	54.89	193.84	40°13'08.330"N	104°43'35.932"W	7.77	
7514.00	62.390	1.400	7364.85	100.36	91.20	194.57	40°13'08.689"N	104°43'35.923"W	11.97	
7557.00	64.940	1.080	7383.92	138.88	129.72	195.40	40°13'09.070"N	104°43'35.912"W	5.97	
7599.00	68.950	0.920	7400.37	177.50	168.36	196.08	40°13'09.452"N	104°43'35.903"W	9.55	
7642.00	71.980	0.860	7414.74	218.00	208.87	196.71	40°13'09.852"N	104°43'35.895"W	7.05	
7684.00	74.840	0.460	7426.73	258.22	249.12	197.17	40°13'10.250"N	104°43'35.889"W	6.87	
7727.00	77.490	0.150	7437.02	299.93	290.86	197.39	40°13'10.662"N	104°43'35.886"W	6.20	
7770.00	82.420	359.430	7444.51	342.20	333.19	197.23	40°13'11.081"N	104°43'35.888"W	11.58	
7812.00	85.830	359.130	7448.81	383.90	374.96	196.71	40°13'11.493"N	104°43'35.895"W	8.15	
7850.00†	89.273	358.835	7450.43	421.78	412.91	196.03	40°13'11.868"N	104°43'35.904"W	9.09	7" CASING POINT
7861.00	90.270	358.750	7450.48	432.75	423.91	195.80	40°13'11.977"N	104°43'35.907"W	9.09	
7903.00	90.000	359.080	7450.38	474.66	465.90	195.01	40°13'12.392"N	104°43'35.917"W	1.02	
7988.00	88.630	359.920	7451.40	559.51	550.89	194.27	40°13'13.232"N	104°43'35.927"W	1.89	
8073.00	88.630	359.490	7453.43	644.37	635.87	193.83	40°13'14.072"N	104°43'35.932"W	0.51	
8244.00	88.910	1.000	7457.10	815.17	806.82	194.56	40°13'15.761"N	104°43'35.923"W	0.90	
8414.00	90.650	0.420	7457.75	985.05	976.80	196.67	40°13'17.441"N	104°43'35.896"W	1.08	
8585.00	89.370	358.710	7457.72	1155.78	1147.78	195.37	40°13'19.130"N	104°43'35.912"W	1.25	
8755.00	90.640	359.550	7457.71	1325.44	1317.76	192.79	40°13'20.810"N	104°43'35.946"W	0.90	



Actual Wellpath Report

BROTEMARKLE 3C-13HZ AWP

Page 4 of 6



REFERENCE WELLPATH IDENTIFICATION

Operator	KERR-MCGEE OIL & GAS ONSHORE LP	Slot	SLOT#24 BROTEMARKLE 3C-13HZ (300'FSL & 2072'FWL, SEC.13)
Area	COLORADO	Well	BROTEMARKLE 3C-13HZ
Field	WELD COUNTY (KERR MCGEE)	Wellbore	BROTEMARKLE 3C-13HZ AWB
Facility	SEC.13-T3N-R66W		

WELLPATH DATA (110 stations)

MD [ft]	Inclination [°]	Azimuth [°]	TVD [ft]	Vert Sect [ft]	North [ft]	East [ft]	Latitude	Longitude	DLS [°/100ft]	Comments
8926.00	90.240	359.390	7456.39	1496.16	1488.75	191.20	40°13'22.500"N	104°43'35.966"W	0.25	
9095.00	88.980	358.370	7457.54	1664.77	1657.70	187.90	40°13'24.169"N	104°43'36.009"W	0.96	
9265.00	89.380	357.900	7459.98	1834.21	1827.60	182.37	40°13'25.848"N	104°43'36.080"W	0.36	
9436.00	90.300	0.830	7460.45	2004.89	1998.56	180.47	40°13'27.538"N	104°43'36.104"W	1.80	
9606.00	90.430	2.730	7459.37	2174.85	2168.47	185.75	40°13'29.217"N	104°43'36.036"W	1.12	
9776.00	90.640	0.990	7457.78	2344.82	2338.37	191.27	40°13'30.896"N	104°43'35.965"W	1.03	
9946.00	90.370	1.560	7456.29	2514.76	2508.32	195.05	40°13'32.575"N	104°43'35.916"W	0.37	
10116.00	89.590	0.880	7456.35	2684.70	2678.28	198.67	40°13'34.255"N	104°43'35.870"W	0.61	
10287.00	90.680	0.170	7455.94	2855.57	2849.27	200.24	40°13'35.944"N	104°43'35.849"W	0.76	
10458.00	90.240	1.190	7454.57	3026.45	3020.25	202.27	40°13'37.634"N	104°43'35.823"W	0.65	
10628.00	89.900	1.140	7454.36	3196.39	3190.21	205.73	40°13'39.313"N	104°43'35.779"W	0.20	
10798.00	89.470	1.260	7455.30	3366.32	3360.17	209.29	40°13'40.993"N	104°43'35.733"W	0.26	
10969.00	91.200	359.940	7454.30	3537.19	3531.15	211.08	40°13'42.683"N	104°43'35.710"W	1.27	
11139.00	89.680	1.040	7452.99	3707.05	3701.13	212.53	40°13'44.362"N	104°43'35.691"W	1.10	
11310.00	89.260	359.600	7454.57	3877.89	3872.11	213.49	40°13'46.052"N	104°43'35.679"W	0.88	
11478.00	88.230	359.020	7458.25	4045.54	4040.06	211.46	40°13'47.712"N	104°43'35.705"W	0.70	
11649.00	89.620	0.580	7461.46	4216.28	4211.02	210.87	40°13'49.401"N	104°43'35.712"W	1.22	
11819.00	91.270	0.740	7460.14	4386.16	4381.00	212.83	40°13'51.081"N	104°43'35.687"W	0.98	
11876.00	91.290	0.520	7458.87	4443.11	4437.98	213.45	40°13'51.644"N	104°43'35.679"W	0.39	LAST BHI MWD-IFR SURVEYS
11927.00	91.290	0.520	7457.72	4494.06	4488.96	213.91	40°13'52.148"N	104°43'35.673"W	0.00	PROJECTION TO BIT

HOLE & CASING SECTIONS - Ref Wellbore: BROTEMARKLE 3C-13HZ AWB Ref Wellpath: BROTEMARKLE 3C-13HZ AWP

String/Diameter	Start MD [ft]	End MD [ft]	Interval [ft]	Start TVD [ft]	End TVD [ft]	Start N/S [ft]	Start E/W [ft]	End N/S [ft]	End E/W [ft]
13.5in Open Hole	16.00	1310.00	1294.00	16.00	1309.91	0.00	0.00	10.97	2.95
9.625in Casing Surface	16.00	1310.00	1294.00	16.00	1309.91	0.00	0.00	10.97	2.95
8.75in Open Hole	1310.00	7860.00	6550.00	1309.91	7450.48	10.97	2.95	422.91	195.82
7in Casing Intermediate	16.00	7850.00	7834.00	16.00	7450.43	0.00	0.00	412.91	196.03
6.125in Open Hole	7850.00	11927.00	4077.00	7450.43	7457.72	412.91	196.03	4488.96	213.91



Actual Wellpath Report

BROTEMARKLE 3C-13HZ AWP

Page 5 of 6



REFERENCE WELLPATH IDENTIFICATION

Operator	KERR-MCGEE OIL & GAS ONSHORE LP	Slot	SLOT#24 BROTEMARKLE 3C-13HZ (300'FSL & 2072'FWL, SEC.13)
Area	COLORADO	Well	BROTEMARKLE 3C-13HZ
Field	WELD COUNTY (KERR MCGEE)	Wellbore	BROTEMARKLE 3C-13HZ AWB
Facility	SEC.13-T3N-R66W		

TARGETS

Name	MD [ft]	TVD [ft]	North [ft]	East [ft]	Grid East [US ft]	Grid North [US ft]	Latitude	Longitude	Shape
SEC.13-T3N-R66W SECTION LINES		11.00	-18.21	-680.87	3215084.96	1323477.82	40°13'07.608"N	104°43'47.208"W	polygon
BROTEMARKLE 3C-13HZ BHL ON PLAT REV-1 (460'FNL & 2270'FWL, SEC.13)		7478.00	4513.33	184.27	3215910.54	1328016.51	40°13'52.388"N	104°43'36.055"W	point
BROTEMARKLE 3C-13HZ LAND BOX		7500.00	0.00	0.00	3215765.61	1323501.95	40°13'07.788"N	104°43'38.431"W	polygon

WELLPATH COMPOSITION - Ref Wellbore: BROTEMARKLE 3C-13HZ AWB Ref Wellpath: BROTEMARKLE 3C-13HZ AWP

Start MD [ft]	End MD [ft]	Positional Uncertainty Model	Log Name/Comment	Wellbore
16.00	1233.00	Generic gyro - continuous (Standard)	MS ENERGY GYRODATA SURVEYS <116-1233>	BROTEMARKLE 3C-13HZ AWB
1233.00	7861.00	NaviTrak (MAGCORR,IFR)	BHI MWD+IFR SURVEYS 8 3/4" HOLE <1337-7861>	BROTEMARKLE 3C-13HZ AWB
7861.00	11876.00	NaviTrak (MAGCORR,IFR)	BHI MWD+IFR SURVEYS 6 1/8" HOLE <7903-11876>	BROTEMARKLE 3C-13HZ AWB
11876.00	11927.00	Blind Drilling (std)	Projection to bit	BROTEMARKLE 3C-13HZ AWB



Actual Wellpath Report

BROTEMARKLE 3C-13HZ AWP

Page 6 of 6



REFERENCE WELLPATH IDENTIFICATION

Operator	KERR-MCGEE OIL & GAS ONSHORE LP	Slot	SLOT#24 BROTEMARKLE 3C-13HZ (300'FSL & 2072'FWL, SEC.13)
Area	COLORADO	Well	BROTEMARKLE 3C-13HZ
Field	WELD COUNTY (KERR MCGEE)	Wellbore	BROTEMARKLE 3C-13HZ AWB
Facility	SEC.13-T3N-R66W		

WELLPATH COMMENTS

MD [ft]	Inclination [°]	Azimuth [°]	TVD [ft]	Comment
16.00	0.000	327.170	16.00	TIE-ON
116.00	0.340	327.170	116.00	BEGIN GYRO SURVEYS
1233.00	0.800	314.910	1232.92	TIE-INTO GYROS
1337.00	1.100	47.940	1336.91	BEGIN BHI MWD+IFR SURVEYS
7850.00	89.273	358.835	7450.43	7" CASING POINT
11876.00	91.290	0.520	7458.87	LAST BHI MWD+IFR SURVEYS
11927.00	91.290	0.520	7457.72	PROJECTION TO BIT