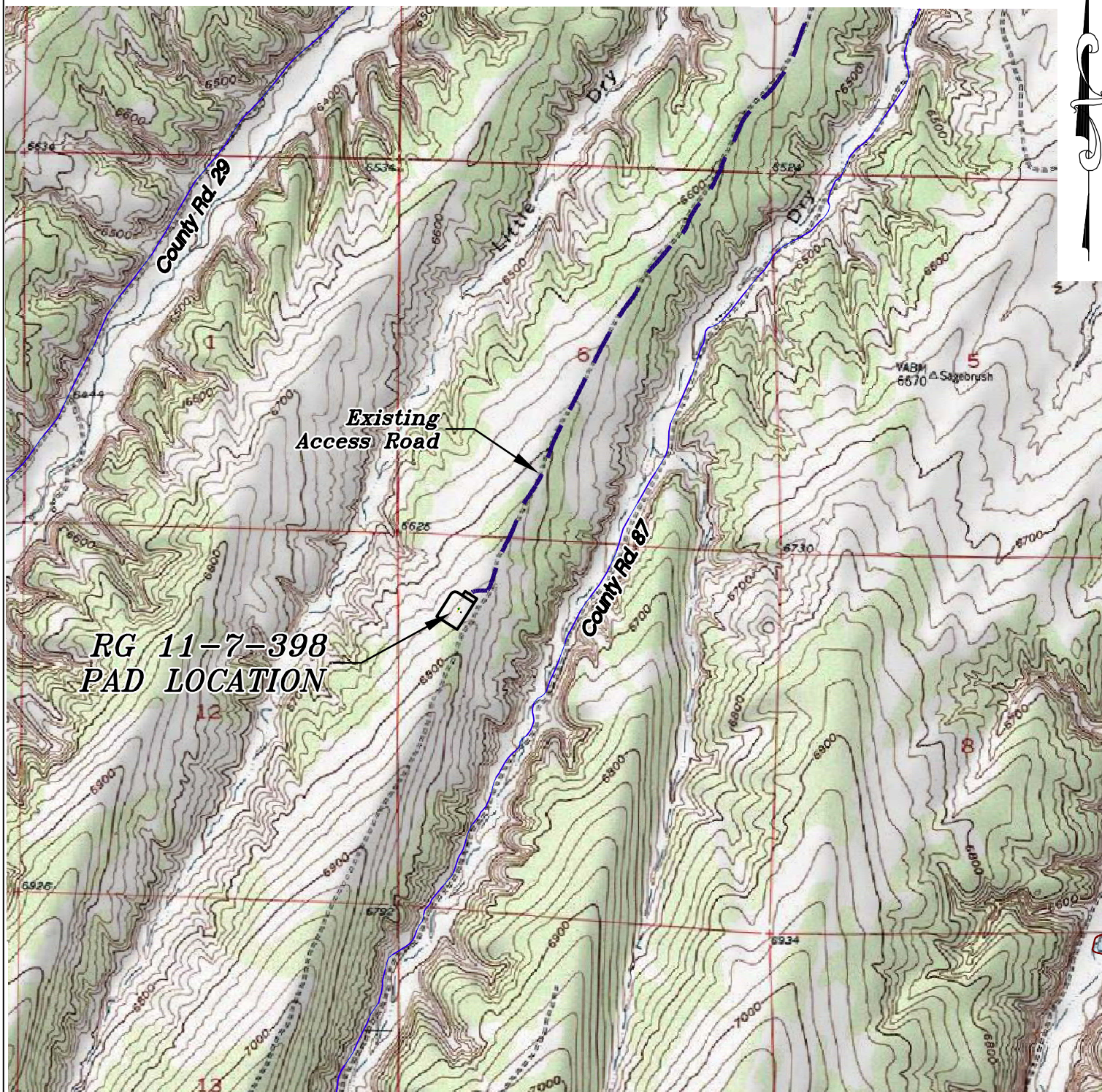


Section 7
T. 3 S., R 97 W.
6th. P.M.



ACCESS DESCRIPTION:

FROM THE INTERSECTION OF STATE HIGHWAY 64 AND RIO BLANCO COUNTY ROAD 5 PROCEED SOUTHERLY ALONG COUNTY ROAD 5 ± 18.0 MILES TO THE INTERSECTION WITH COUNTY ROAD 26 (Mile Marker 23.4), PROCEED RIGHT ON COUNTY ROAD 26 ± 1.6 MILES TO THE INTERSECTION WITH COUNTY ROAD 29, PROCEED LEFT IN A SOUTHERLY DIRECTION ± 0.8 MILES TO AN INTERSECTION WITH A DIRT/GRAVEL ROAD, PROCEED LEFT IN SOUTHWESTERLY DIRECTION ± 3.1 MILES TO THE EXISTING RG 11-7-397 DRILL PAD LOCATION, AS SHOWN HEREON.

136 East Third Street
Rifle, Colorado 81650
Ph. (970) 625-2720
Fax (970) 625-2773



BOOKCLIFF
Survey Services, Inc.

SCALE: 1" = 2000'
DATE: 7/30/13
PLAT: 5 of 7
PROJECT: Highlands
DFT: cws

Construction Plan Prepared for:
WPXENERGY WPX Energy Rocky Mountain, LLC

*RG 11-7-397 Drill Pad - Plat 5
ACCESS ROAD & TOPO MAP*