



Cathedral Energy Services

135577

5":100' - TVD

12/21/2013 6:51:31 AM

CATHEDRAL**Oper. Company:** EnCana Oil & Gas**Country:** USA**State / Province:** Colorado**County / Parish:** Weld**Started:** 12/13/2013 09:00 AM**API/UWI:** 05-123-37790-00**Field:** DJ Basin**Well:** Lochbuie 2C-31H**Rig:** H&P 522**Ended:** 12/21/2013 07:00 PM**Personnel****Day Hand:** Jared Nichols**Night Hand:** Jesse Suitter**Comp. Emp:** Cathedral Energy Service**Location****Latitude:** 40.014080**Longitude:** -104.712200**Elev. GL:** 5007**Elev. DF:** 30**Elev. KB:** 5037**Hole Data**

Size	From	To
12.25	0	1513
8.75	1513	7542
6.125	7542	11822

Casing Data

Size	From	To
9 5/8	0	1504
7	0	7540
4 1/2	0	11812

Bit Sizes

Size	From	To
12.25	0	1513
8.75	1513	7542
6.125	7542	11822

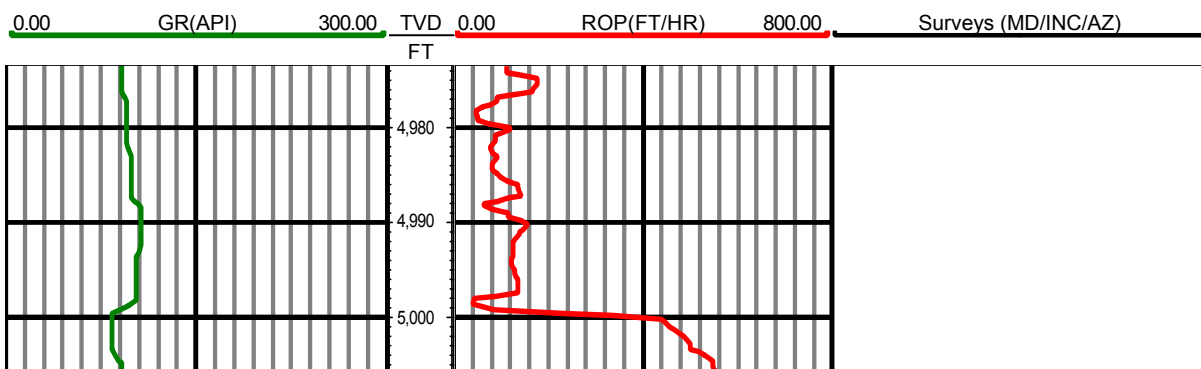
Mud Data

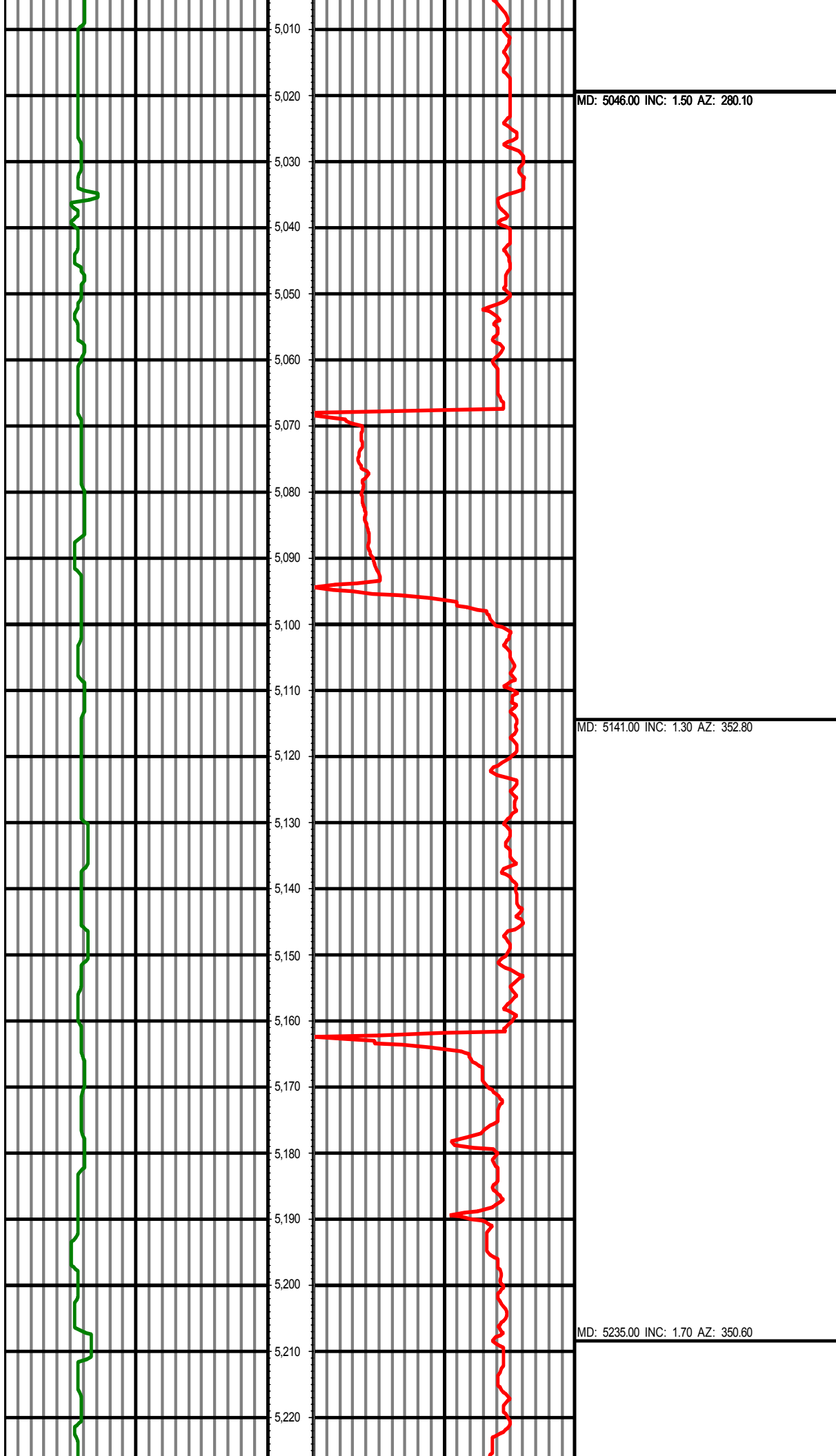
Type	Weight	Density	Viscosity	Rm	Rmf	Rmc	From	To
------	--------	---------	-----------	----	-----	-----	------	----

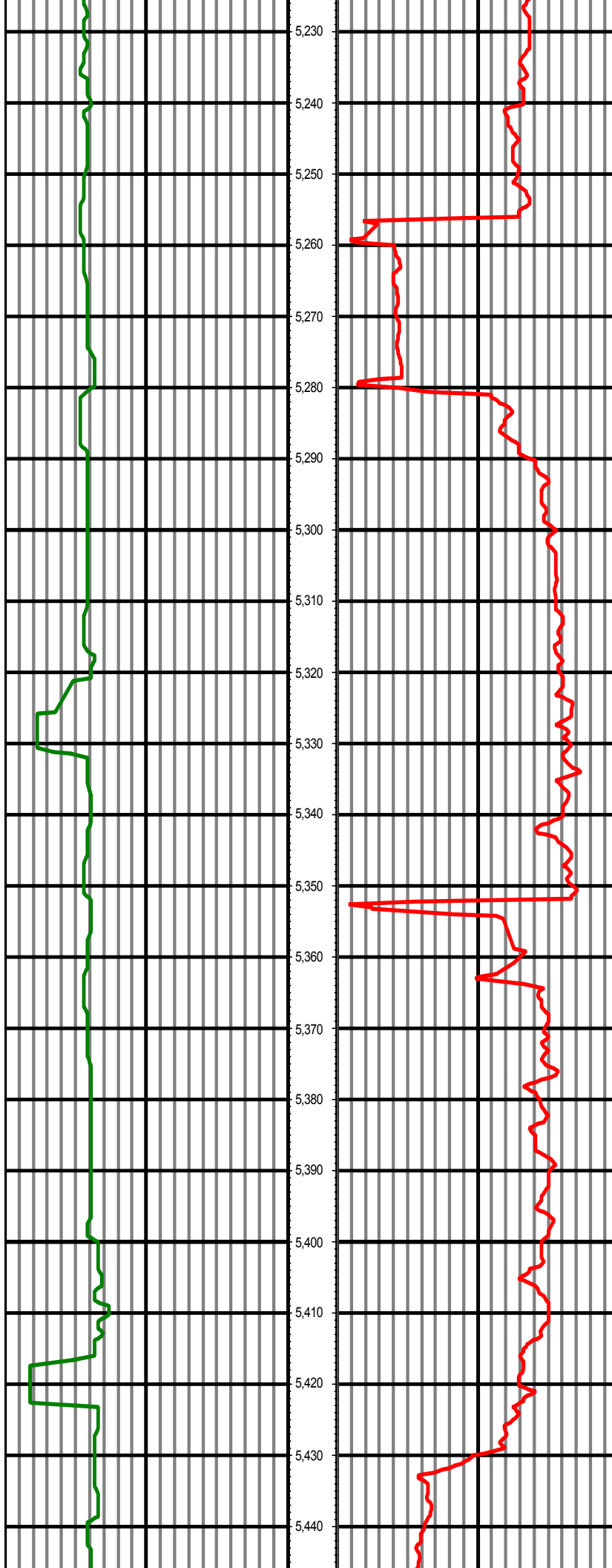
Tool Run Data

Serial Number	Gamma Offset	Resist. Offset	Start Time	Start Depth	End Time	End Depth
309	37.86	0	12/13/2013 9:00:28 AM	1513	12/13/2013 12:30:28 AM	6703
309	37.52	0	12/14/2013 12:00:36 AM	6703	12/17/2013 11:30:36 PM	7542
232	37.66	0	12/19/2013 3:00:52 AM	7542	12/21/2013 7:00:52 PM	11822

All interpretations are opinions based on inferences from electrical or other measurements and we cannot and do not guarantee the accuracy or correctness of any interpretation, and we shall not except in the case of gross or willful negligence on our part, be liable or responsible for any loss, cost damages or expenses incurred or sustained by anyone resulting from an interpretation made by any of our officers, agents, or employees.







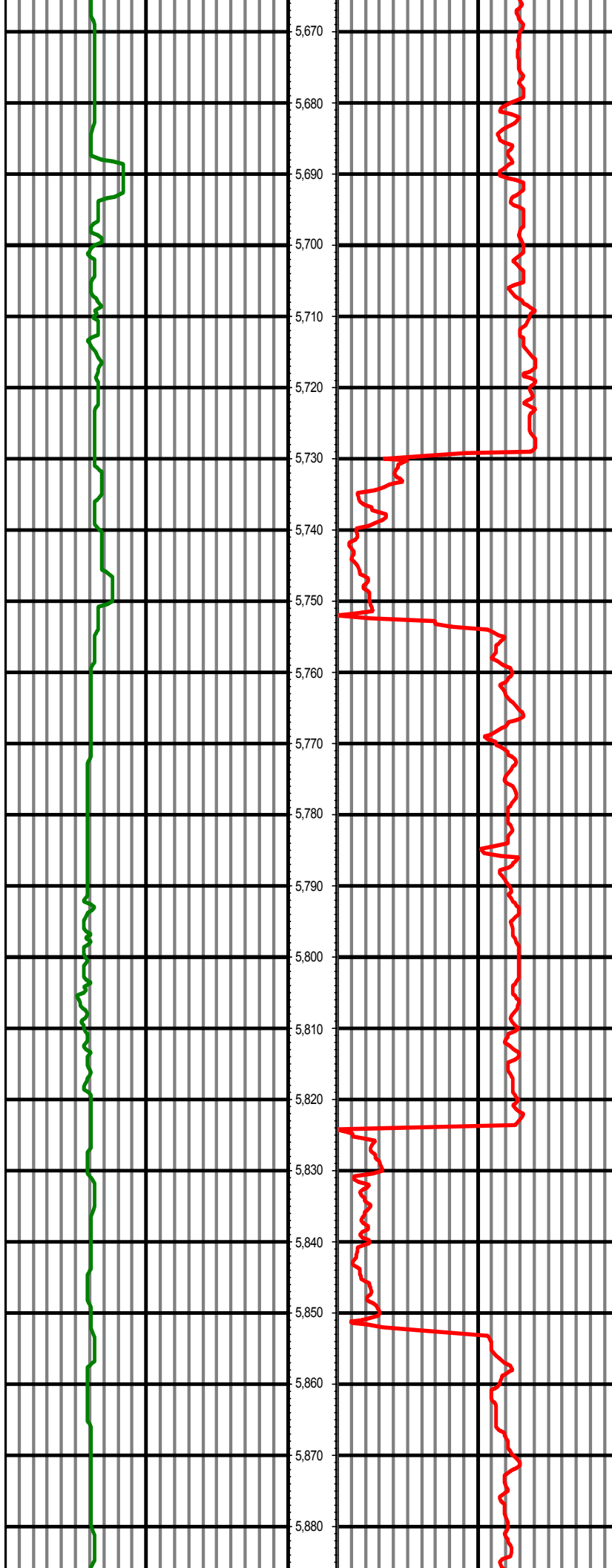
MD: 5330.00 INC: 1.50 AZ: 71.10

MD: 5424.00 INC: 0.70 AZ: 100.50



MD: 5519.00 INC: 0.00 AZ: 118.50

MD: 5614.00 INC: 0.40 AZ: 340.40

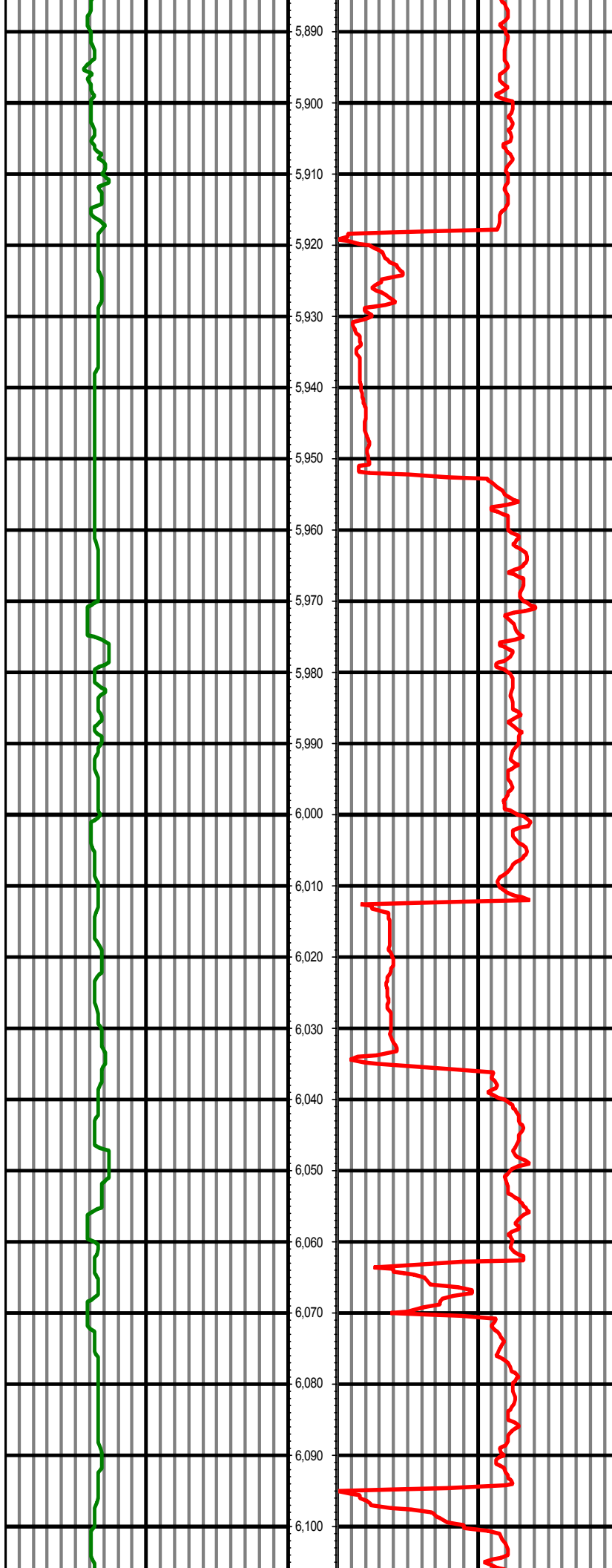


5,670
5,680
5,690
5,700
5,710
5,720
5,730
5,740
5,750
5,760
5,770
5,780
5,790
5,800
5,810
5,820
5,830
5,840
5,850
5,860
5,870
5,880

MD: 5708.00 INC: 1.20 AZ: 359.50

MD: 5803.00 INC: 1.80 AZ: 36.30

MD: 5897.00 INC: 2.00 AZ: 36.80



MD: 5992.00 INC: 0.50 AZ: 52.10

MD: 6087.00 INC: 1.30 AZ: 111.90



MD: 6181.00 INC: 0.80 AZ: 95.10

MD: 6276.00 INC: 0.70 AZ: 274.10

