



Cathedral Energy Services

135577

5":100' - MD

12/21/2013 6:47:46 AM

**CATHEDRAL**

**Oper. Company:** EnCana Oil & Gas

**API/UWI:** 05-123-37790-00

**Country:** USA

**Field:** DJ Basin

**State / Province:** Colorado

**Well:** Lochbuie 2C-31H

**County / Parish:** Weld

**Rig:** H&P 522

**Started:** 12/13/2013 09:00 AM

**Ended:** 12/21/2013 07:00 PM

**Personnel**

**Day Hand:** Jared Nichols  
**Night Hand:** Jesse Suitter  
**Comp. Emp:** Cathedral Energy Service

**Location**

**Latitude:** 40.014080  
**Longitude:** -104.712200  
**Elev. GL:** 5007  
**Elev. DF:** 30  
**Elev. KB:** 5037

**Hole Data**

Size	From	To
12.25	0	1513
8.75	1513	7542
6.125	7542	11822

**Casing Data**

Size	From	To
9 5/8	0	1504
7	0	7540
4 1/2	0	11812

**Bit Sizes**

Size	From	To
12.25	0	1513
8.75	1513	7542
6.125	7542	11822

**Mud Data**

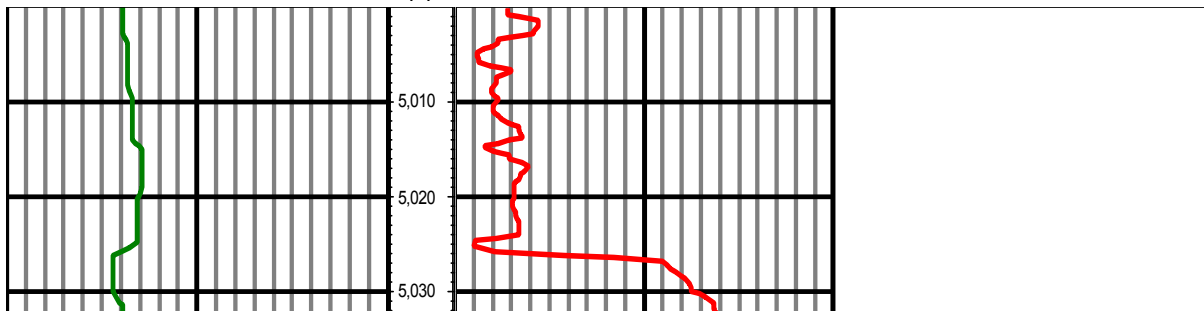
Type	Weight	Density	Viscosity	Rm	Rmf	Rmc	From	To

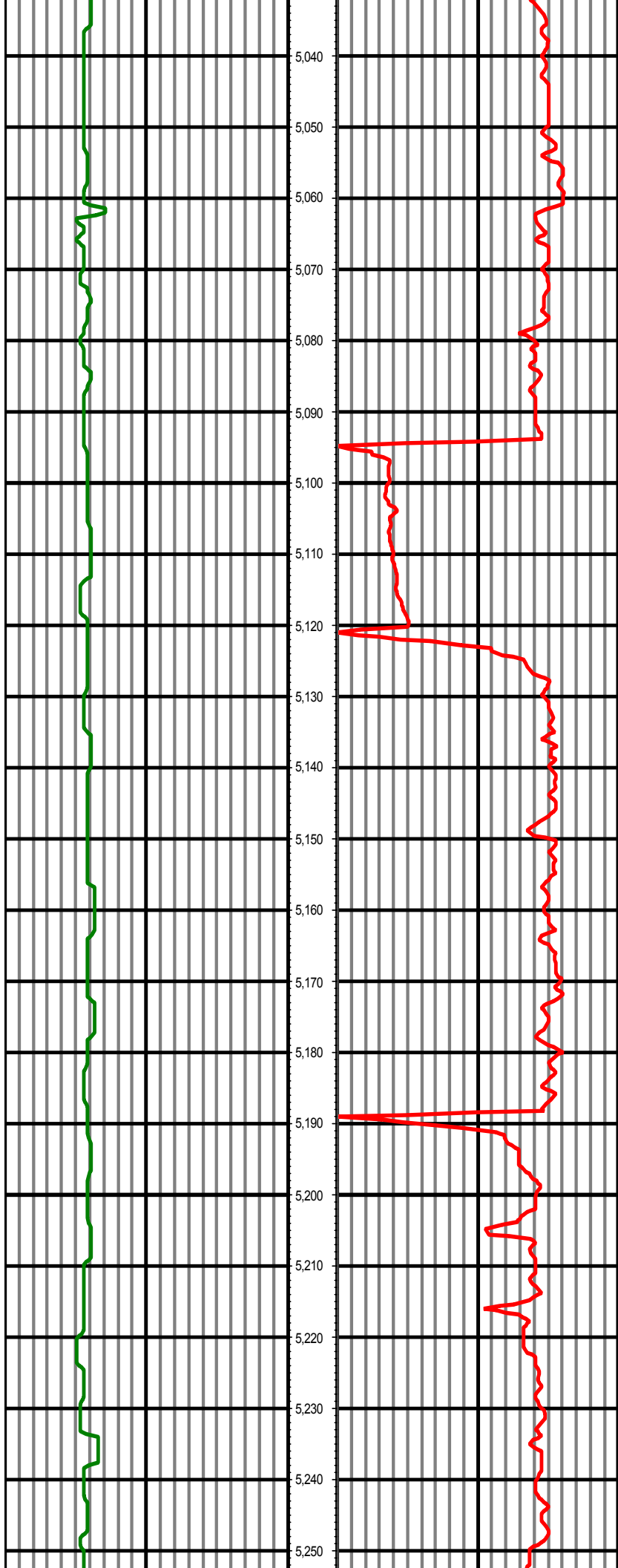
**Tool Run Data**

Serial Number	Gamma Offset	Resist. Offset	Start Time	Start Depth	End Time	End Depth
309	37.86	0	12/13/2013 9:00:28 AM	1513	12/13/2013 12:30:28 AM	6703
309	37.52	0	12/14/2013 12:00:36 AM	6703	12/17/2013 11:30:36 PM	7542
232	37.66	0	12/19/2013 3:00:52 AM	7542	12/21/2013 7:00:52 PM	11822

*All interpretations are opinions based on inferences from electrical or other measurements and we cannot and do not guarantee the accuracy or correctness of any interpretation, and we shall not except in the case of gross or willful negligence on our part, be liable or responsible for any loss, cost damages or expenses incurred or sustained by anyone resulting from an interpretation made by any of our officers, agents, or employees.*

0.00 GR(API) 300.00 MD 0.00 ROP(FT/HR) 800.00 Surveys (MD/INC/AZ)  
FT

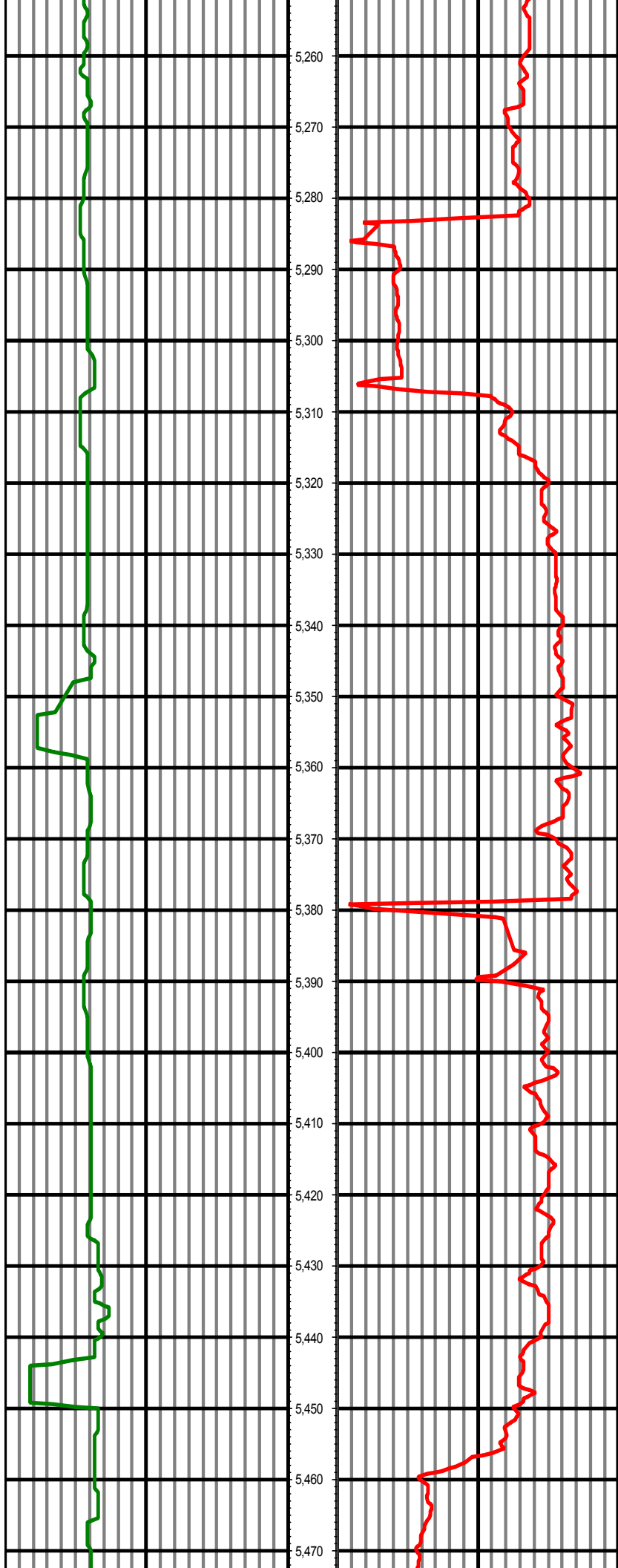




MD: 5046.00 INC: 1.50 AZ: 280.10

MD: 5141.00 INC: 1.30 AZ: 352.80

MD: 5235.00 INC: 1.70 AZ: 350.60



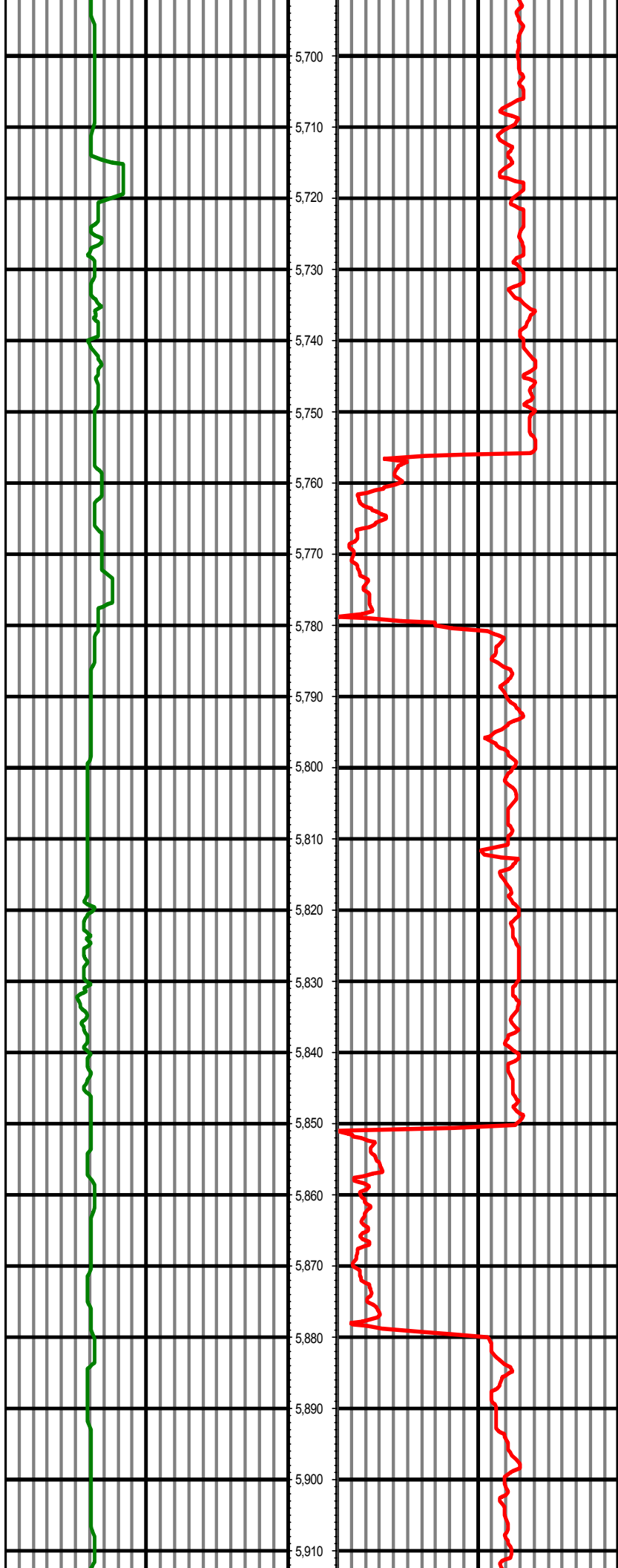
MD: 5330.00 INC: 1.50 AZ: 71.10

MD: 5424.00 INC: 0.70 AZ: 100.50



MD: 5519.00 INC: 0.00 AZ: 118.50

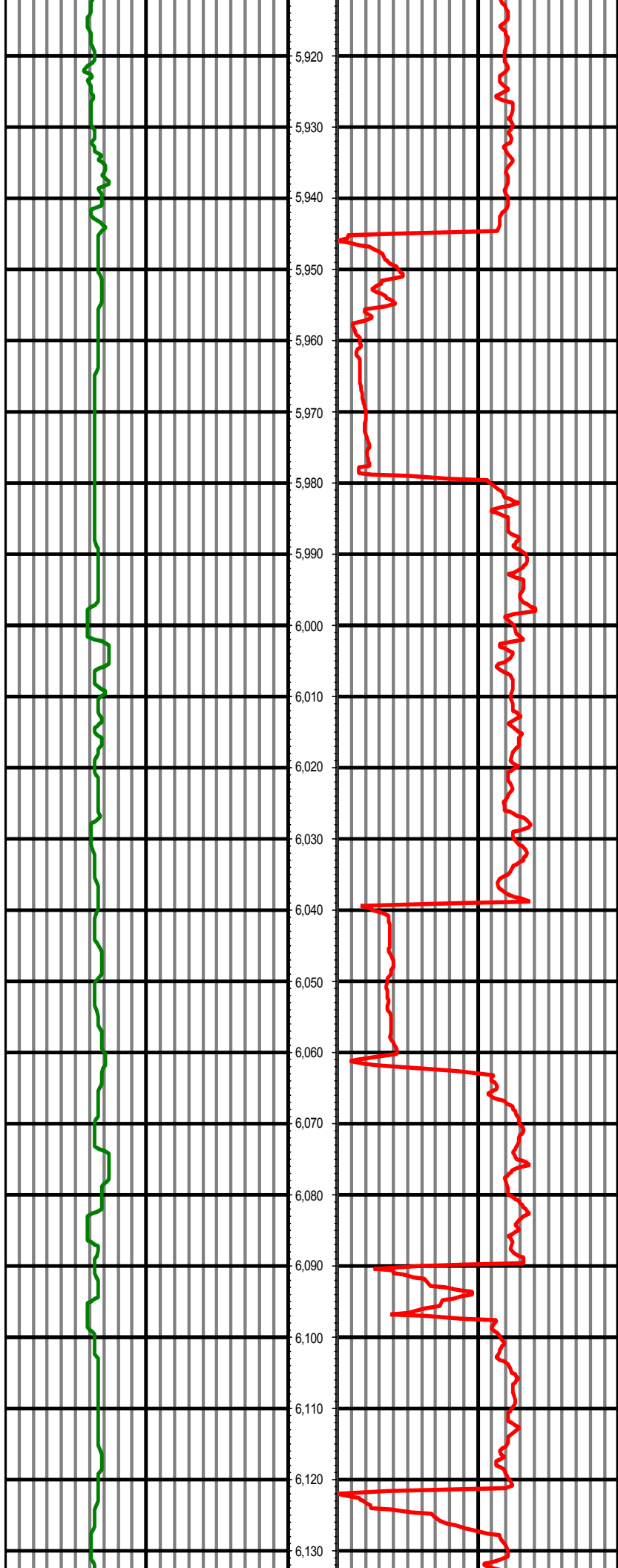
MD: 5614.00 INC: 0.40 AZ: 340.40



MD: 5708.00 INC: 1.20 AZ: 359.50

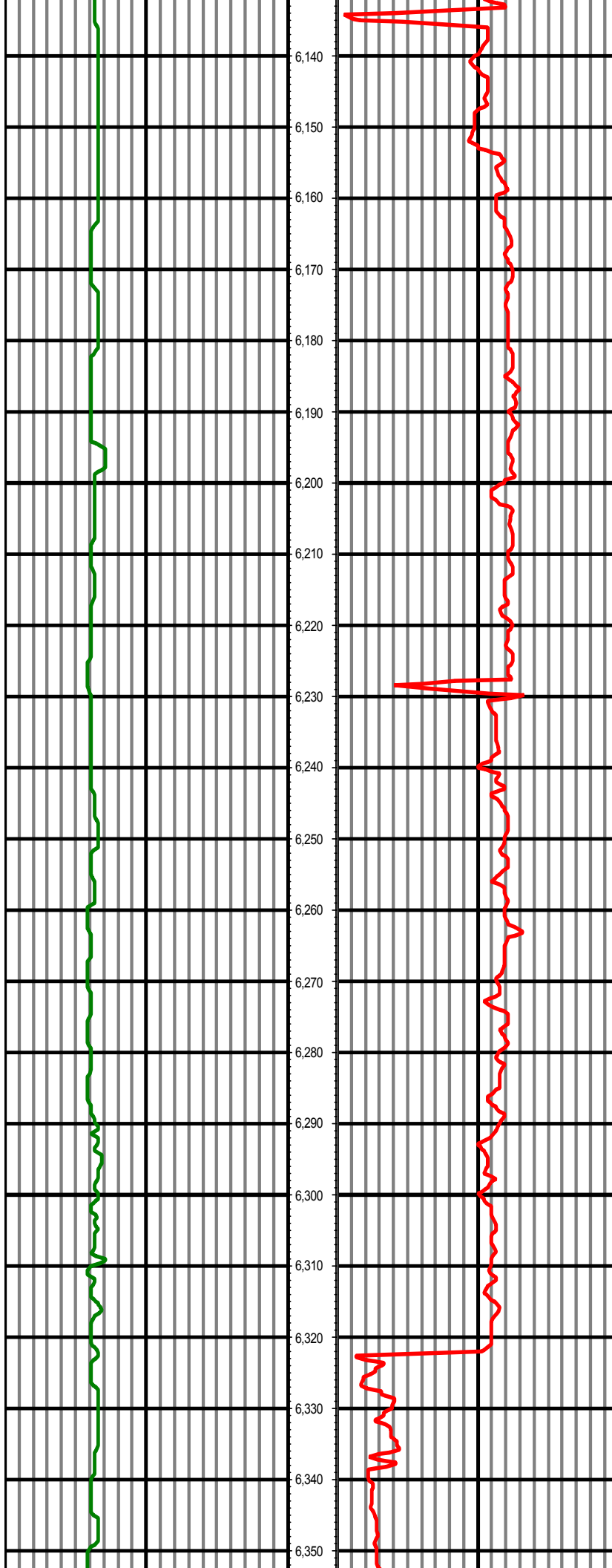
MD: 5803.00 INC: 1.80 AZ: 36.30

MD: 5897.00 INC: 2.00 AZ: 36.80



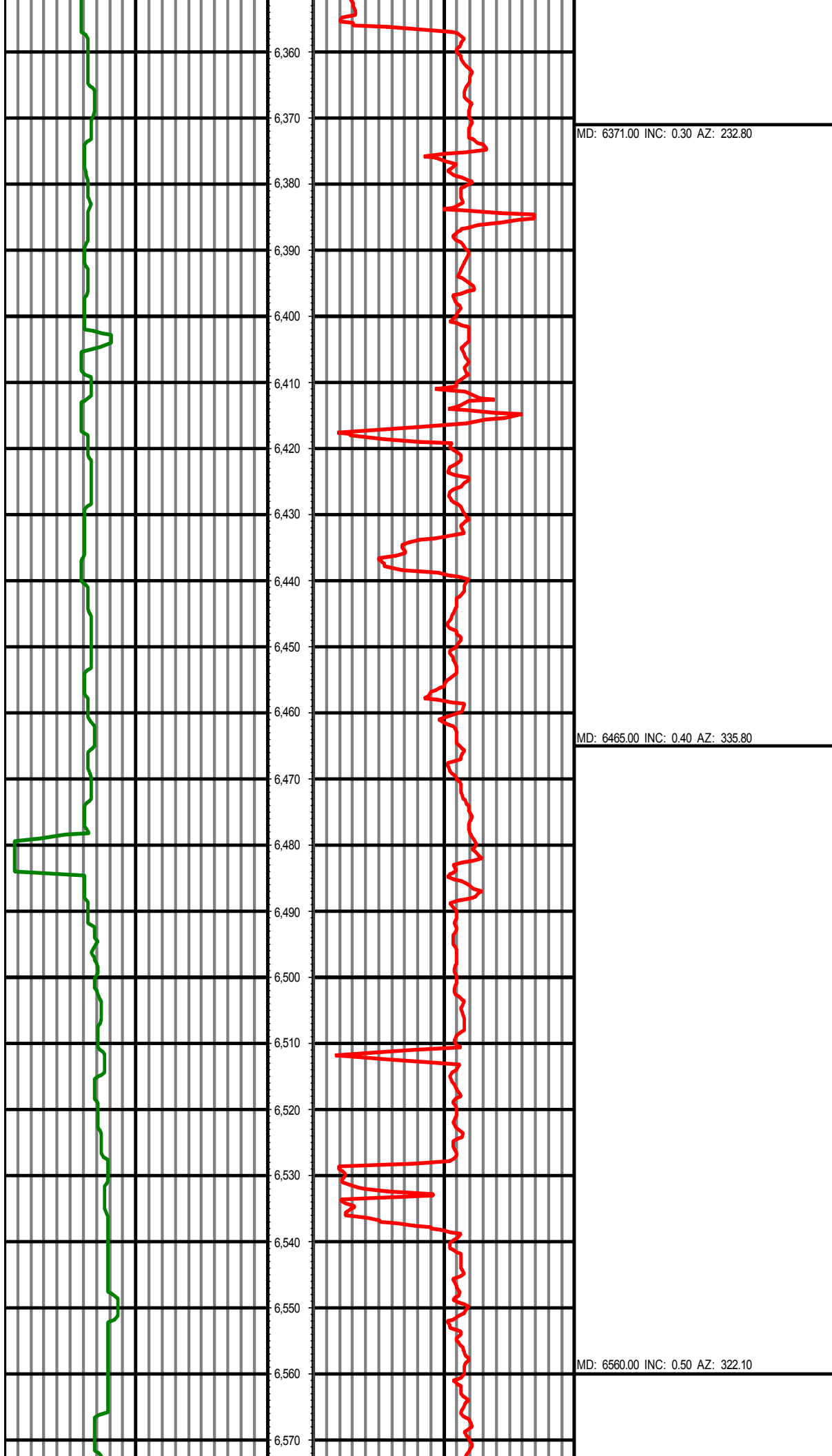
MD: 5992.00 INC: 0.50 AZ: 52.10

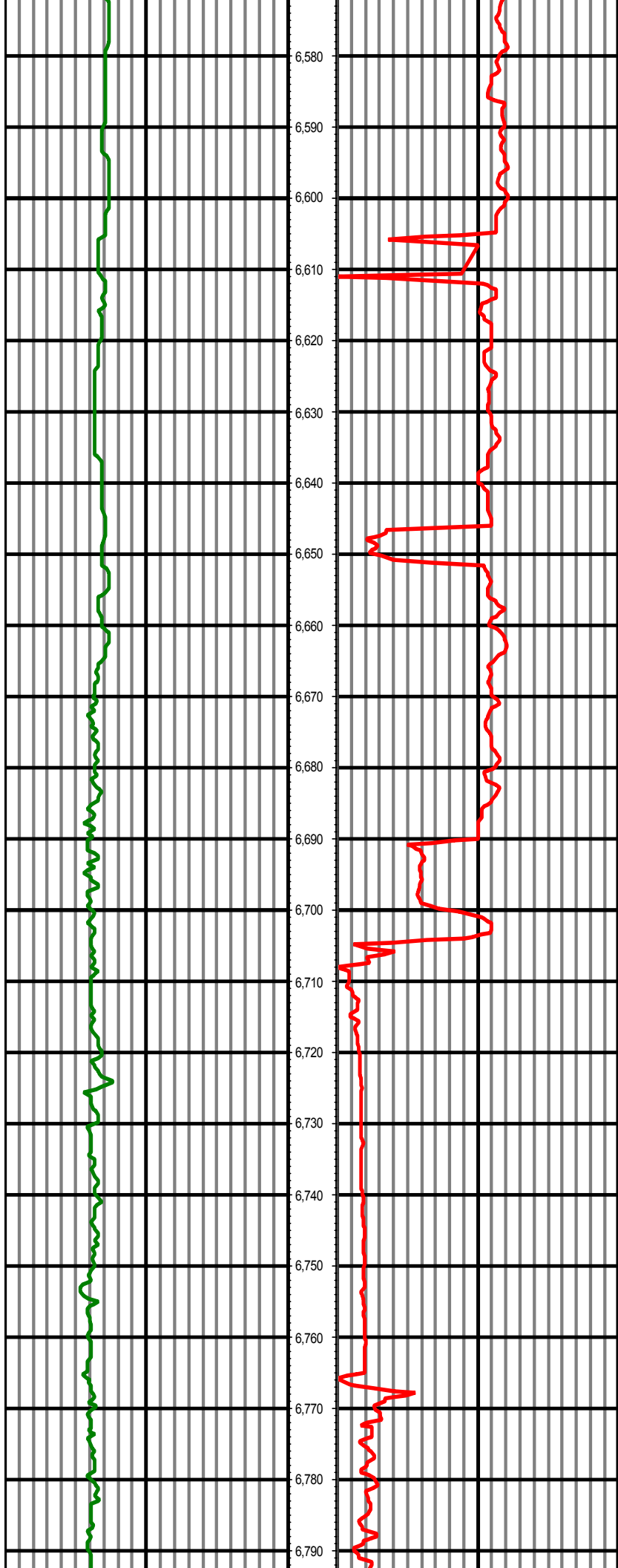
MD: 6087.00 INC: 1.30 AZ: 111.90



MD: 6181.00 INC: 0.80 AZ: 95.10

MD: 6276.00 INC: 0.70 AZ: 274.10



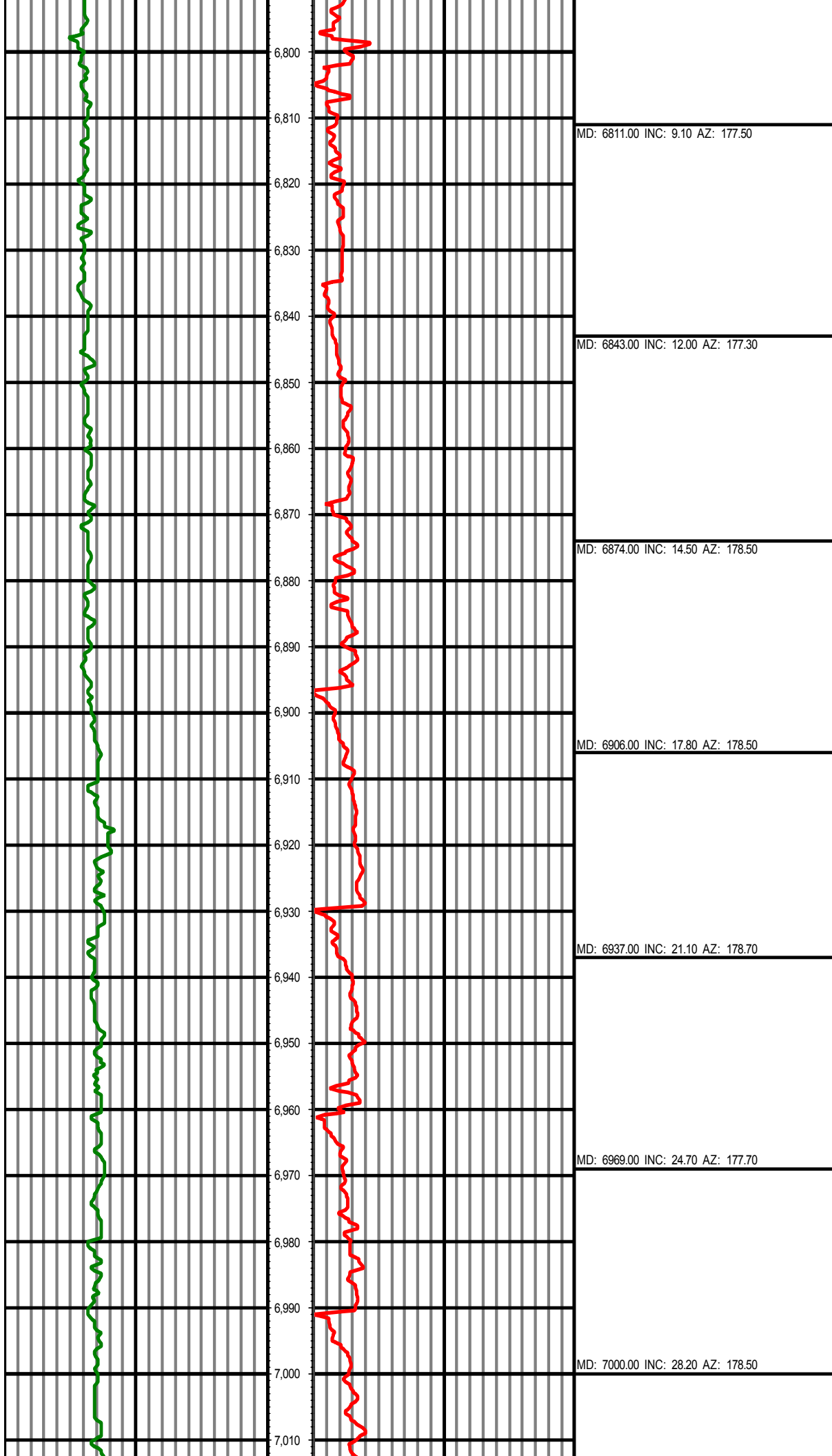


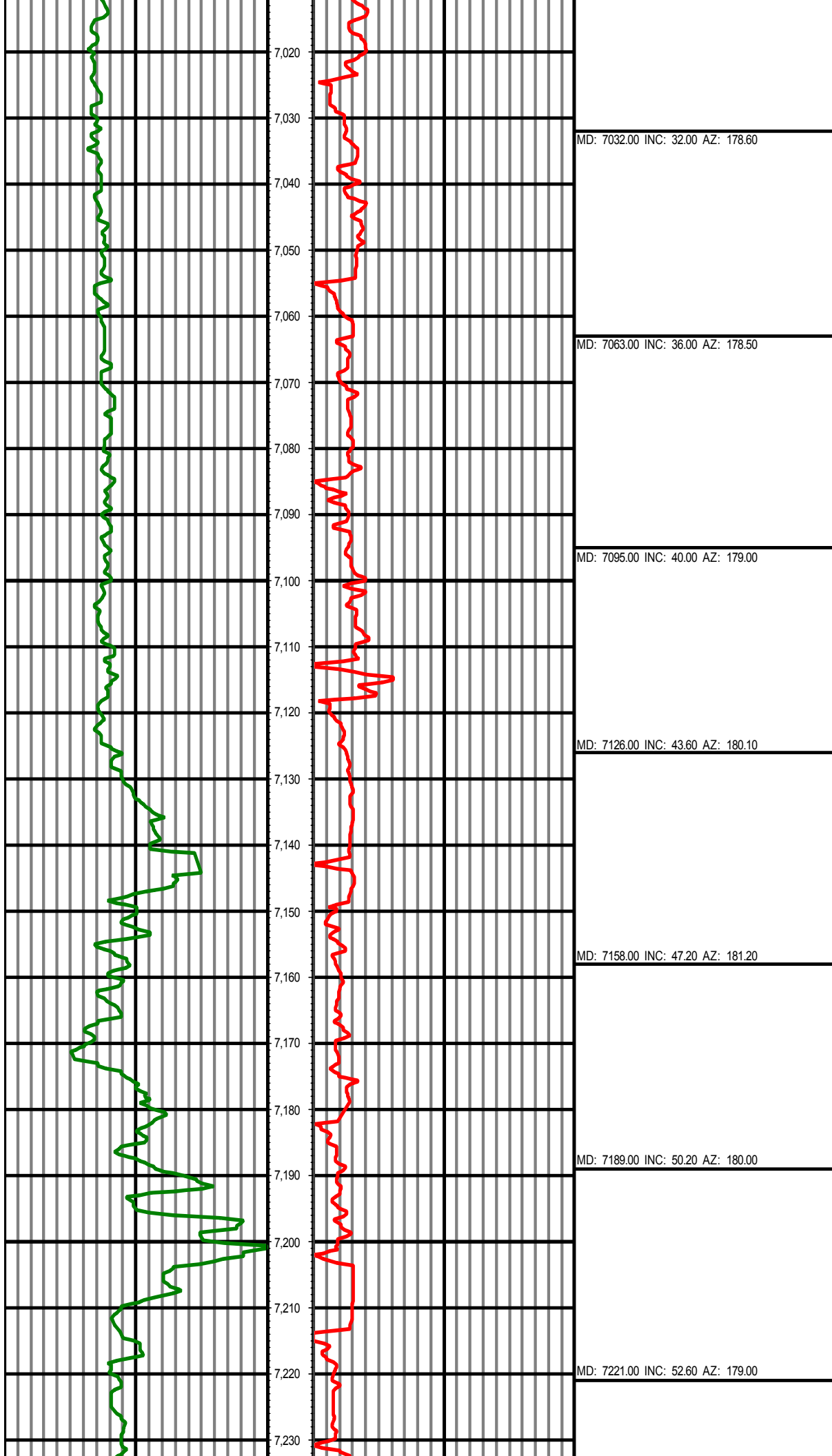
MD: 6654.00 INC: 0.60 AZ: 315.30

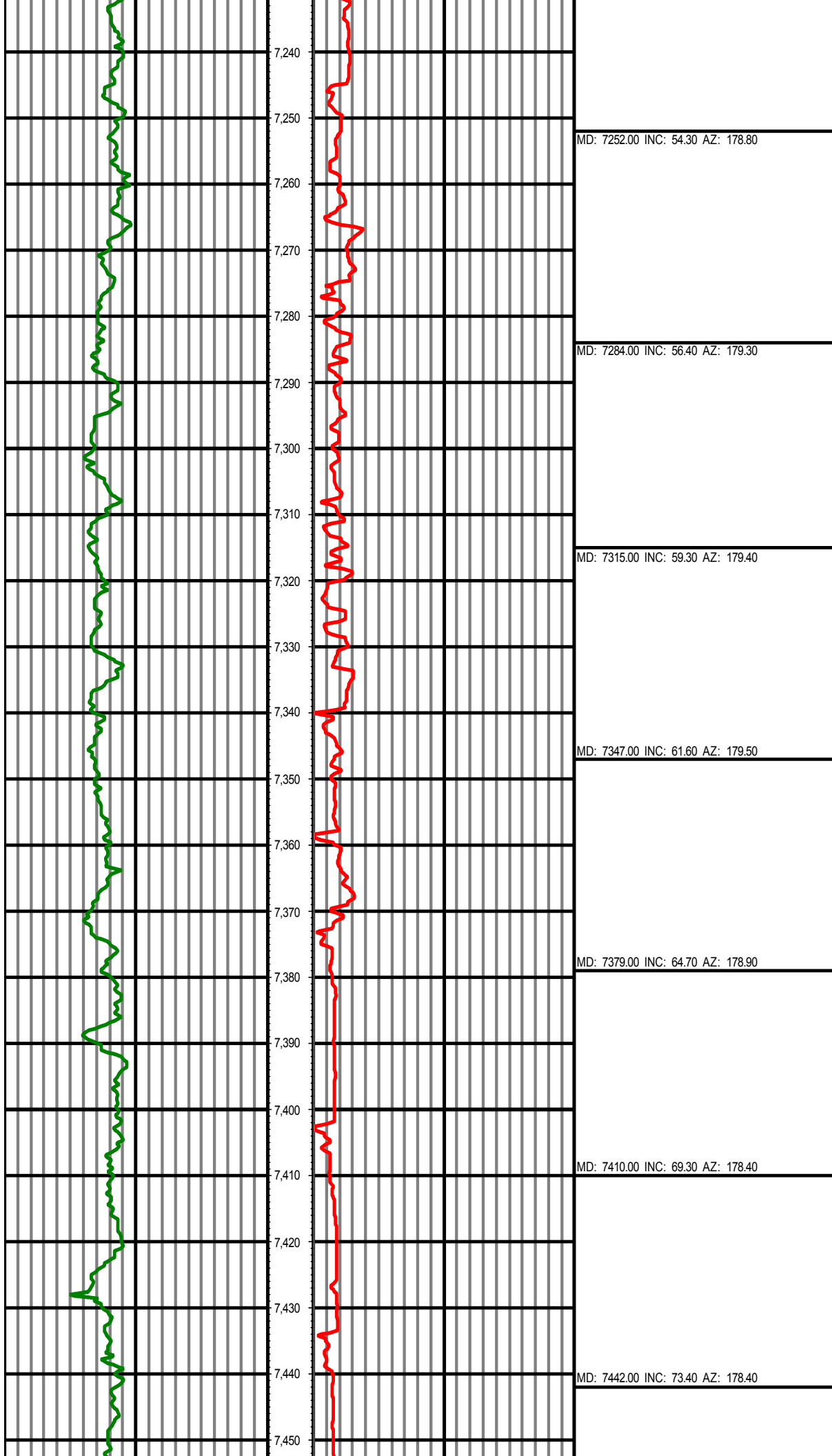
MD: 6716.00 INC: 1.30 AZ: 202.30

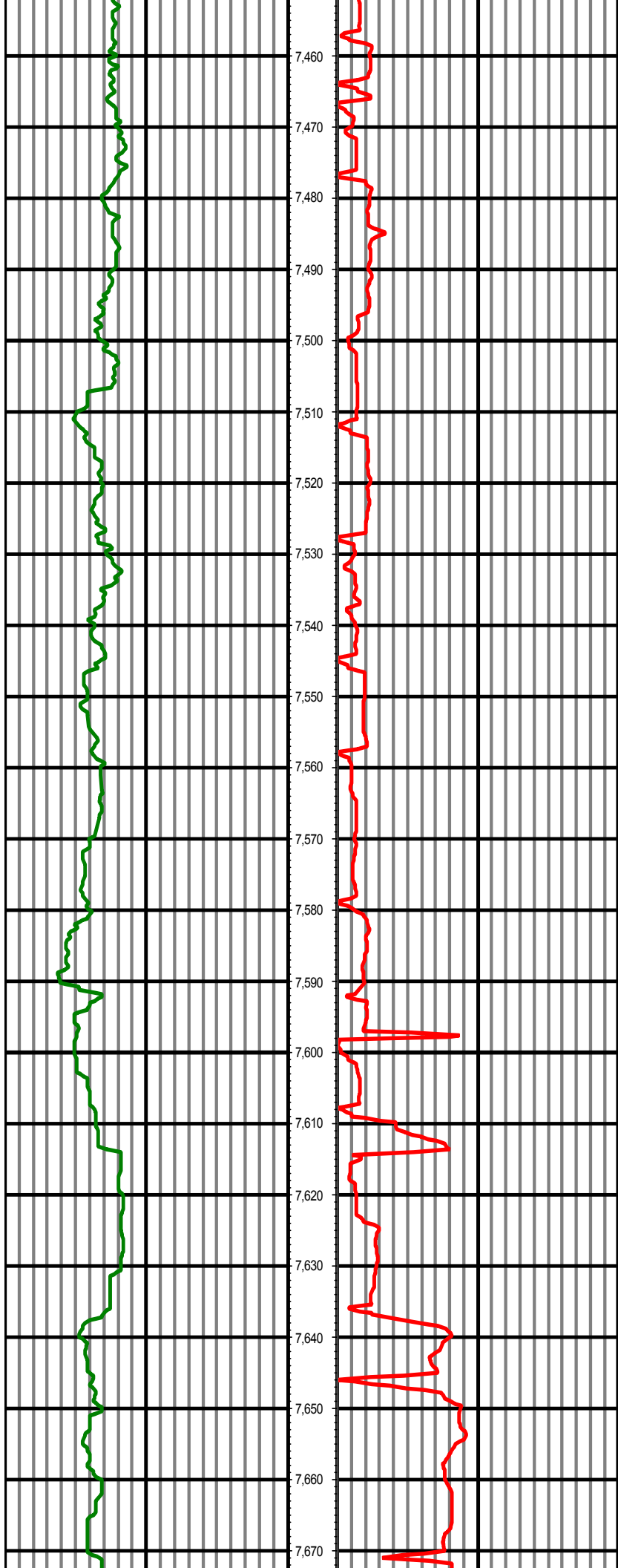
MD: 6748.00 INC: 4.20 AZ: 187.40

MD: 6779.00 INC: 6.50 AZ: 181.60







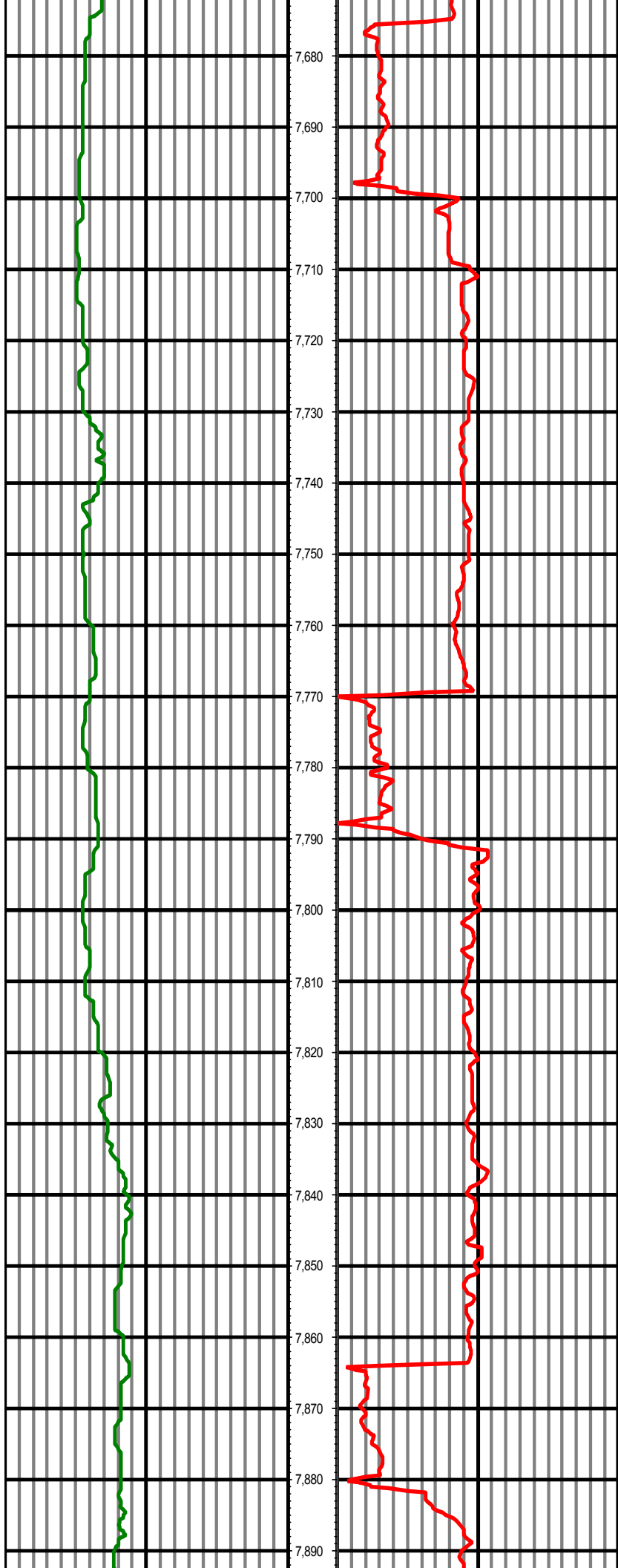


MD: 7473.00 INC: 76.10 AZ: 178.60

MD: 7505.00 INC: 77.80 AZ: 178.50

MD: 7542.00 INC: 80.20 AZ: 179.30

MD: 7622.00 INC: 85.70 AZ: 181.40



MD: 7717.00 INC: 90.80 AZ: 181.80

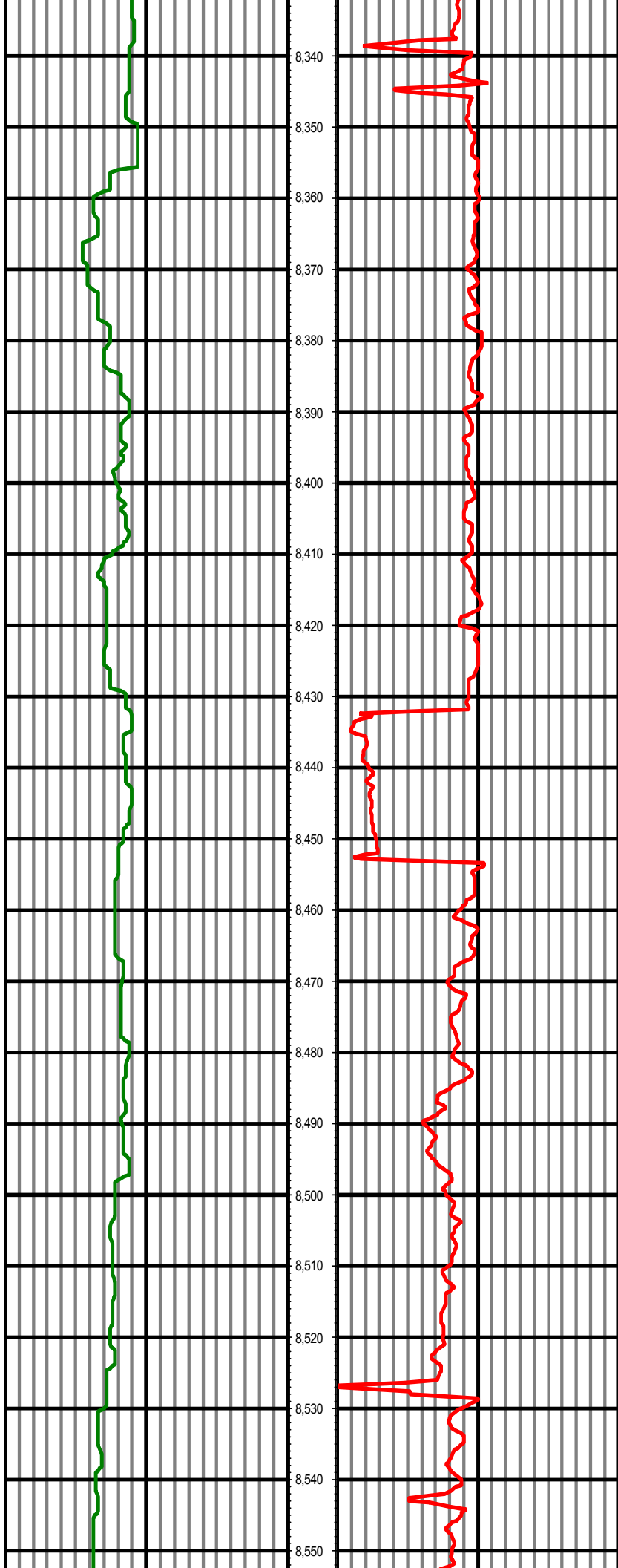
MD: 7812.00 INC: 90.50 AZ: 178.70





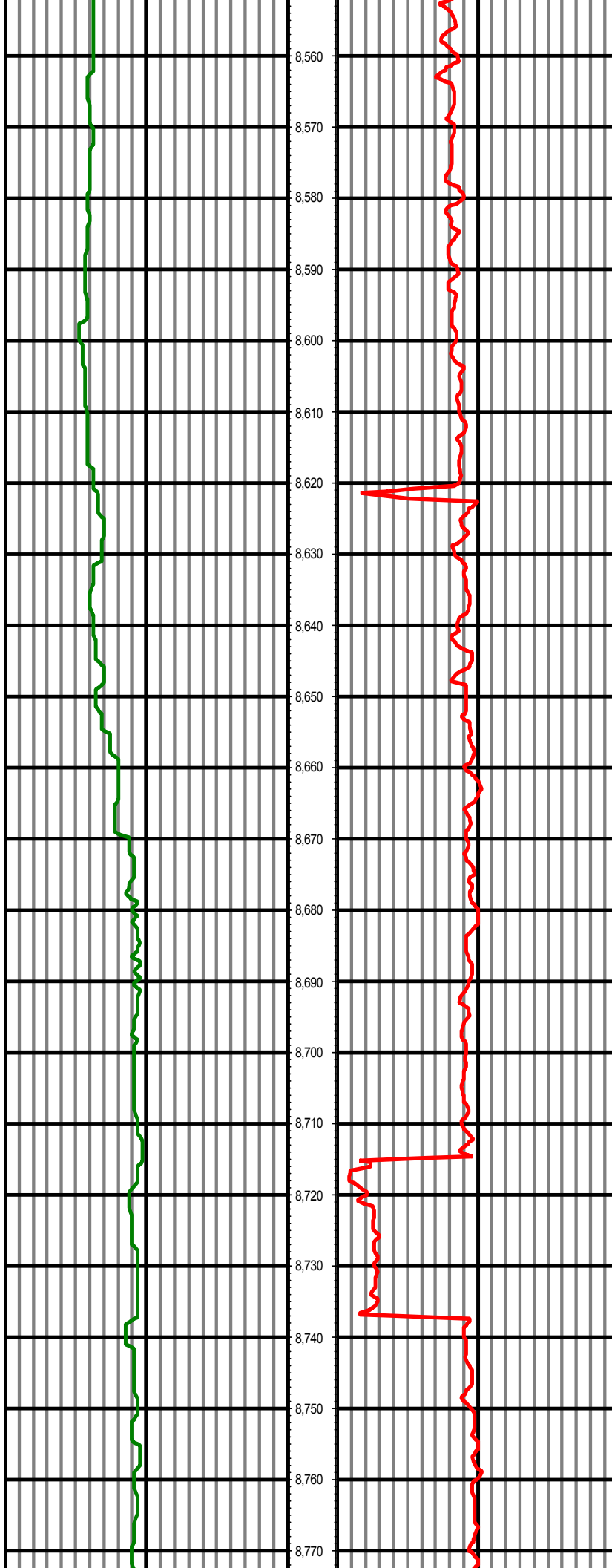
MD: 8190.00 INC: 89.00 AZ: 179.90

MD: 8284.00 INC: 89.60 AZ: 181.40



MD: 8379.00 INC: 90.60 AZ: 180.70

MD: 8473.00 INC: 89.60 AZ: 182.00

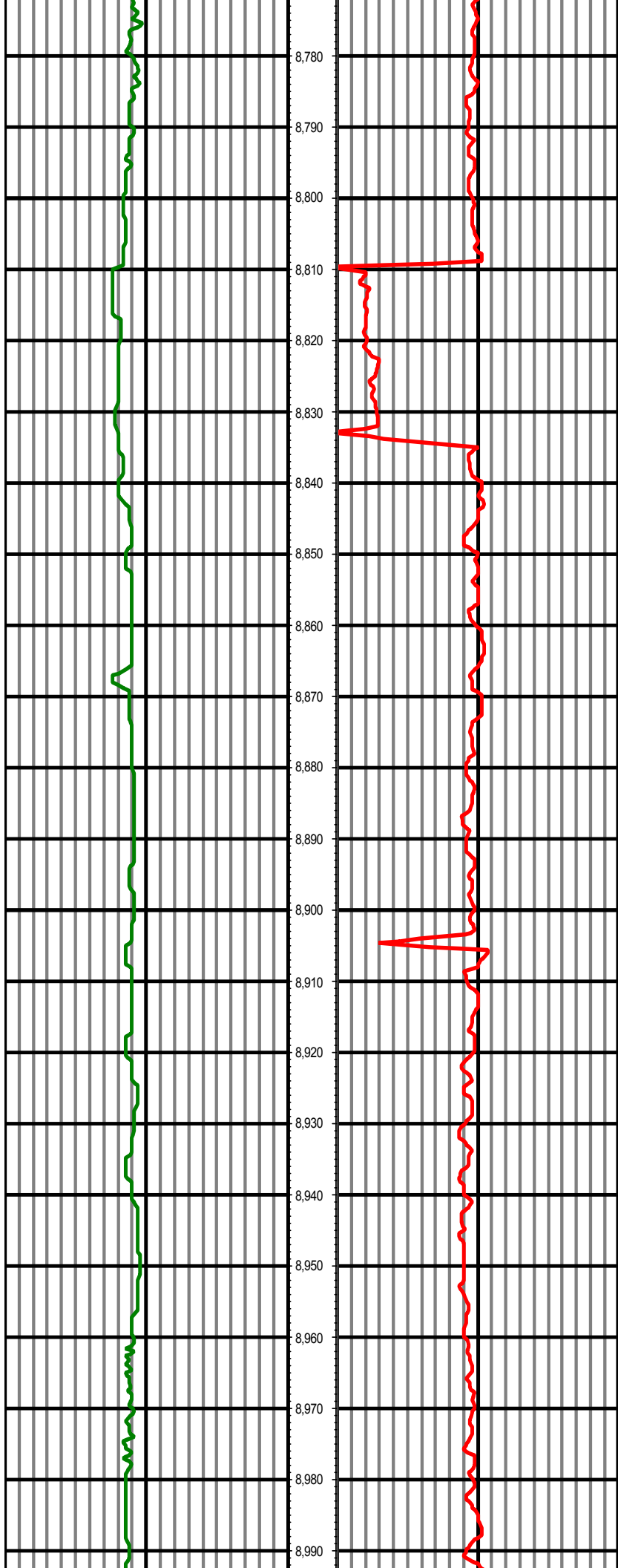


8,560  
8,570  
8,580  
8,590  
8,600  
8,610  
8,620  
8,630  
8,640  
8,650  
8,660  
8,670  
8,680  
8,690  
8,700  
8,710  
8,720  
8,730  
8,740  
8,750  
8,760  
8,770

MD: 8568.00 INC: 90.30 AZ: 181.40

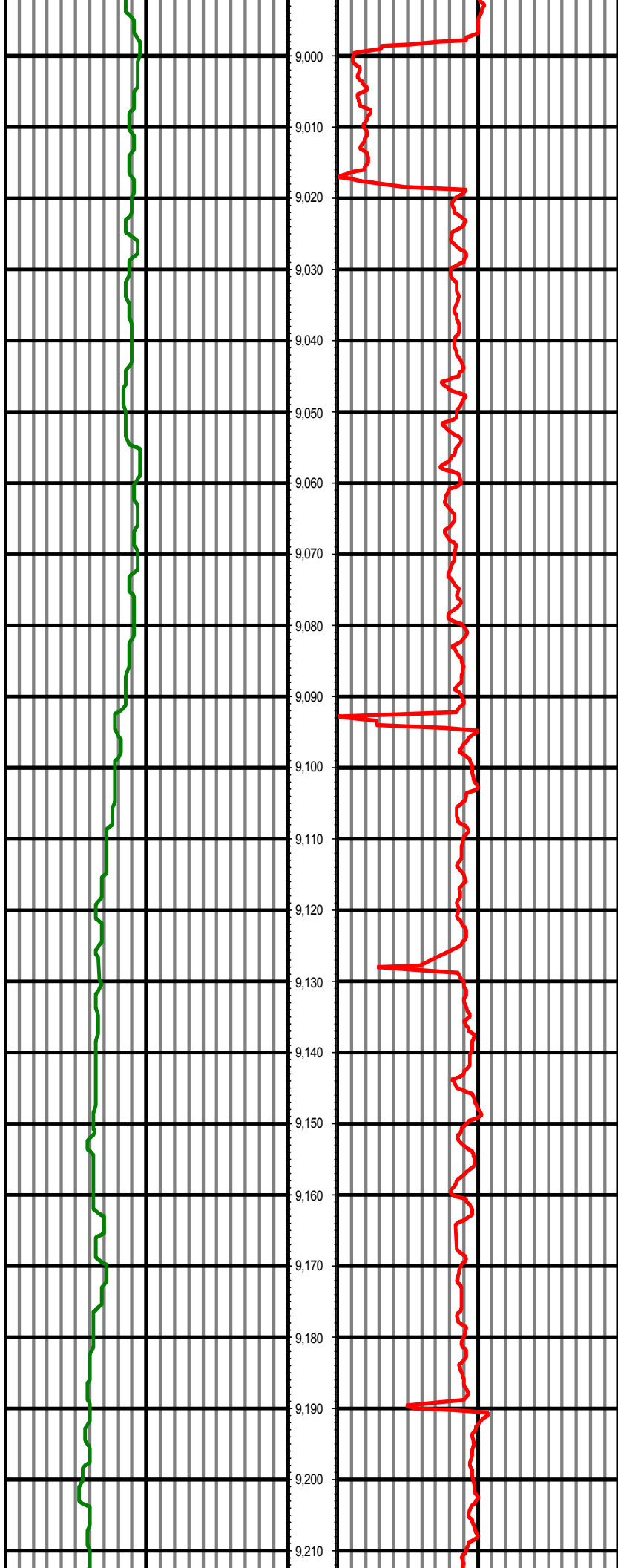
MD: 8662.00 INC: 91.50 AZ: 180.50

MD: 8757.00 INC: 90.90 AZ: 181.60



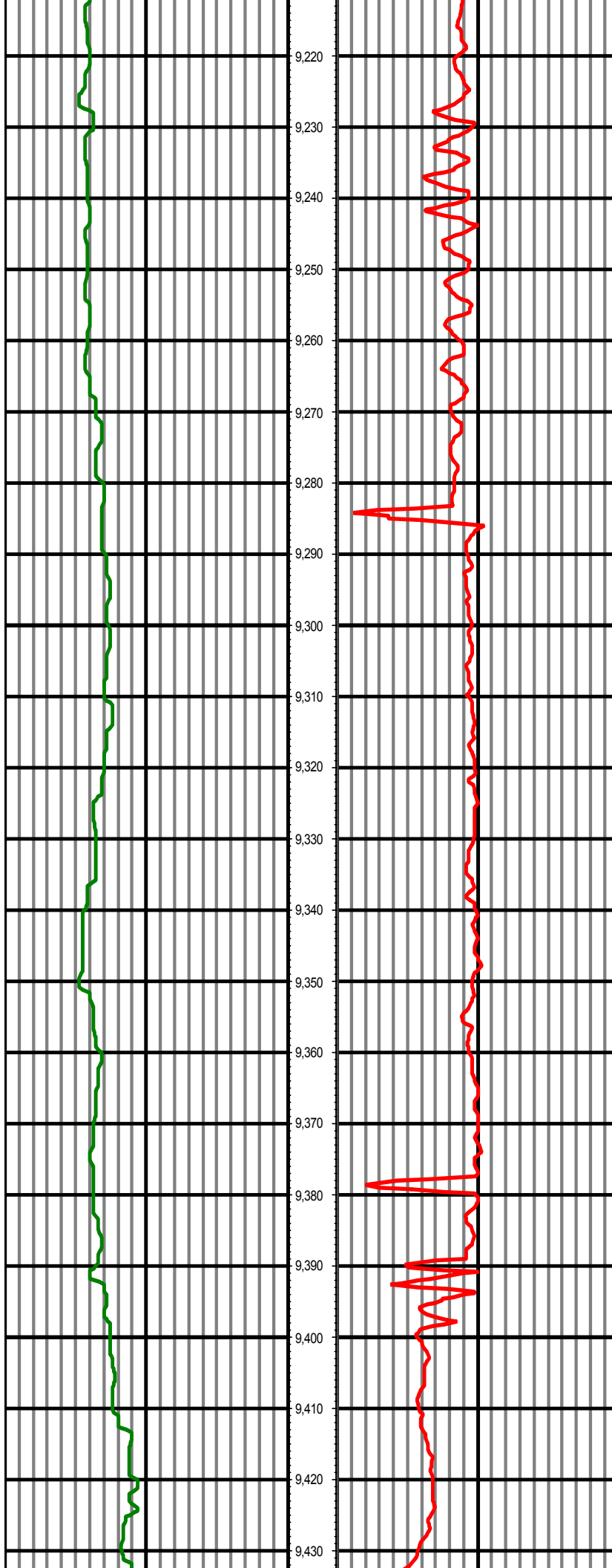
MD: 8851.00 INC: 88.30 AZ: 180.30

MD: 8946.00 INC: 89.60 AZ: 179.90



MD: 9041.00 INC: 88.00 AZ: 180.20

MD: 9135.00 INC: 88.40 AZ: 179.20



MD: 9230.00 INC: 89.20 AZ: 178.80

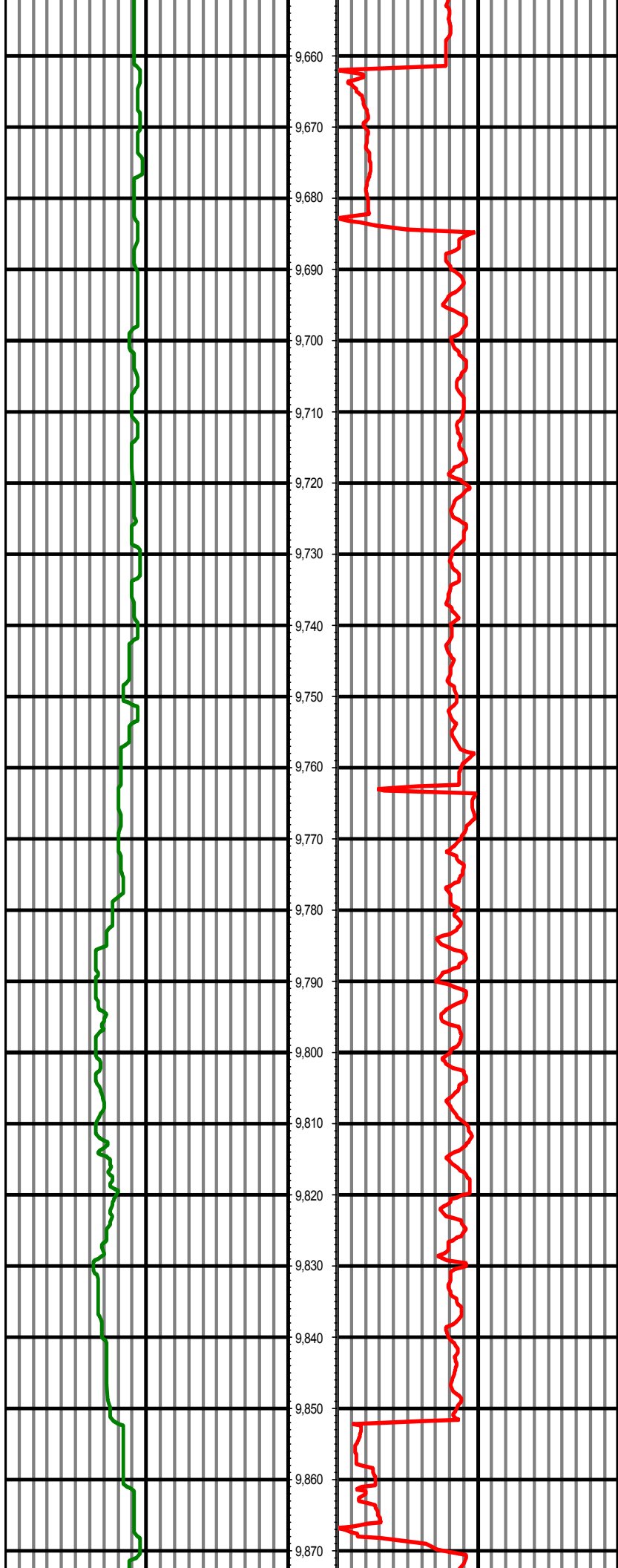
MD: 9324.00 INC: 89.70 AZ: 178.10

MD: 9419.00 INC: 91.10 AZ: 177.70



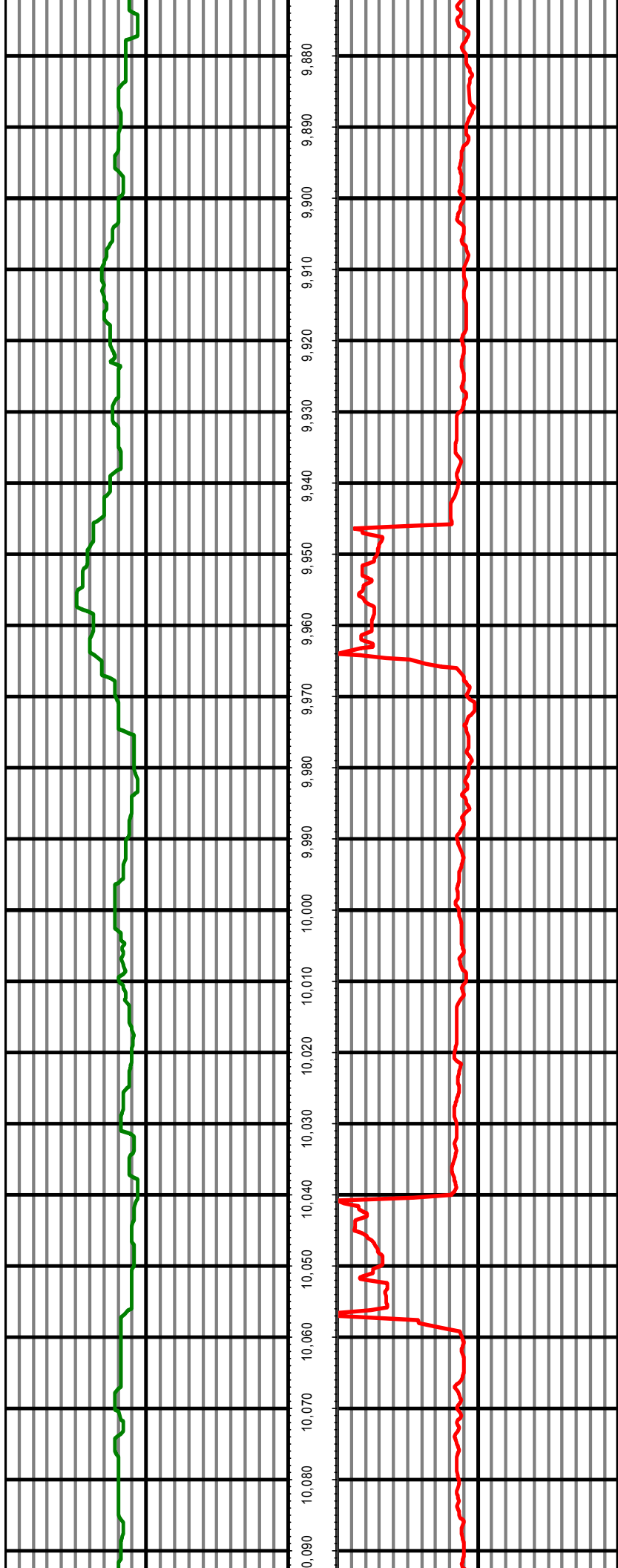
MD: 9514.00 INC: 90.20 AZ: 178.30

MD: 9608.00 INC: 88.00 AZ: 179.00



MD: 9703.00 INC: 89.80 AZ: 181.10

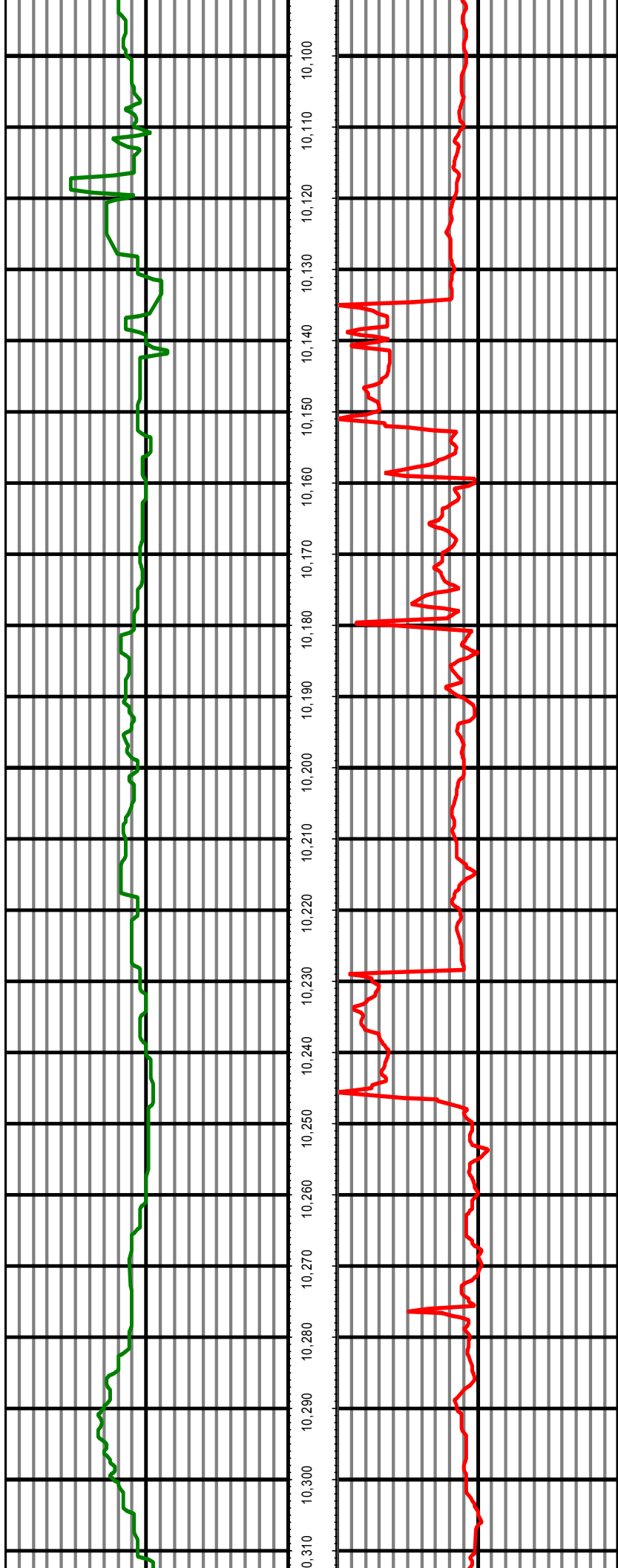
MD: 9797.00 INC: 90.30 AZ: 179.90



MD: 9892.00 INC: 90.80 AZ: 180.10

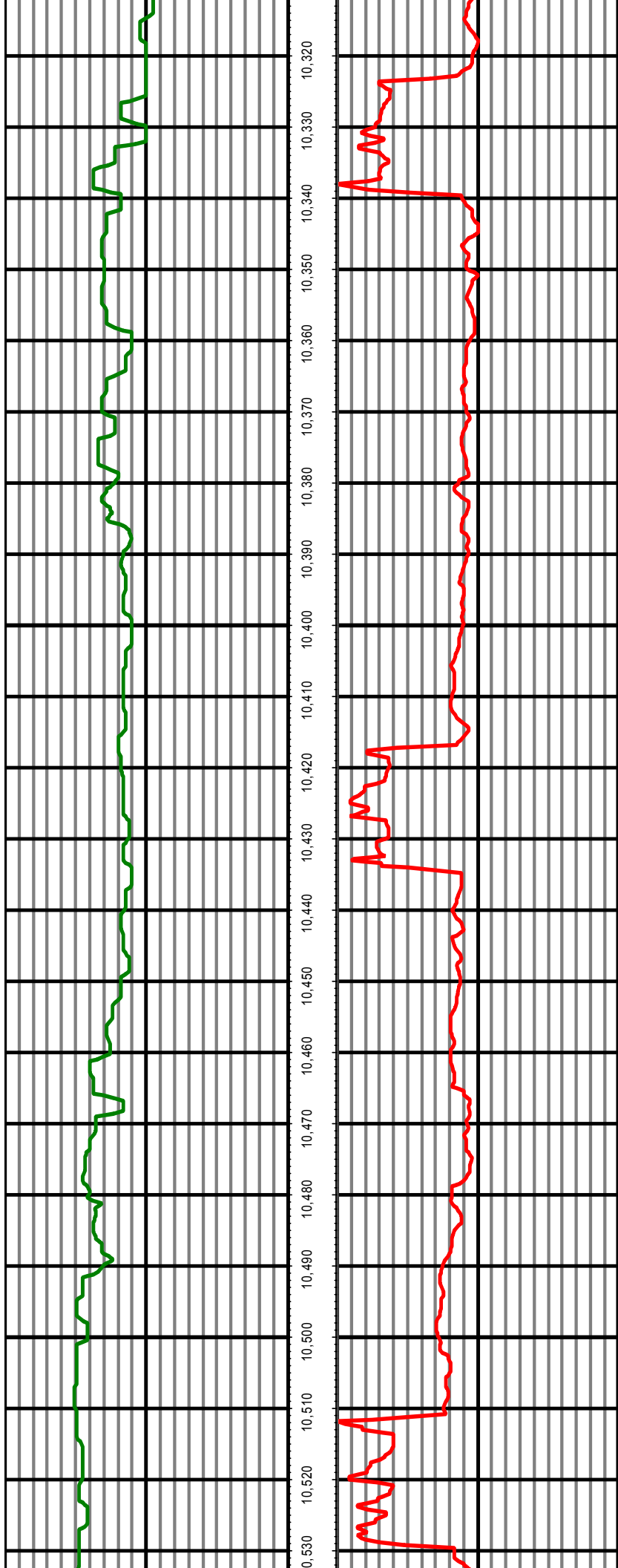
MD: 9987.00 INC: 90.60 AZ: 181.40

MD: 10081.00 INC: 89.80 AZ: 180.50



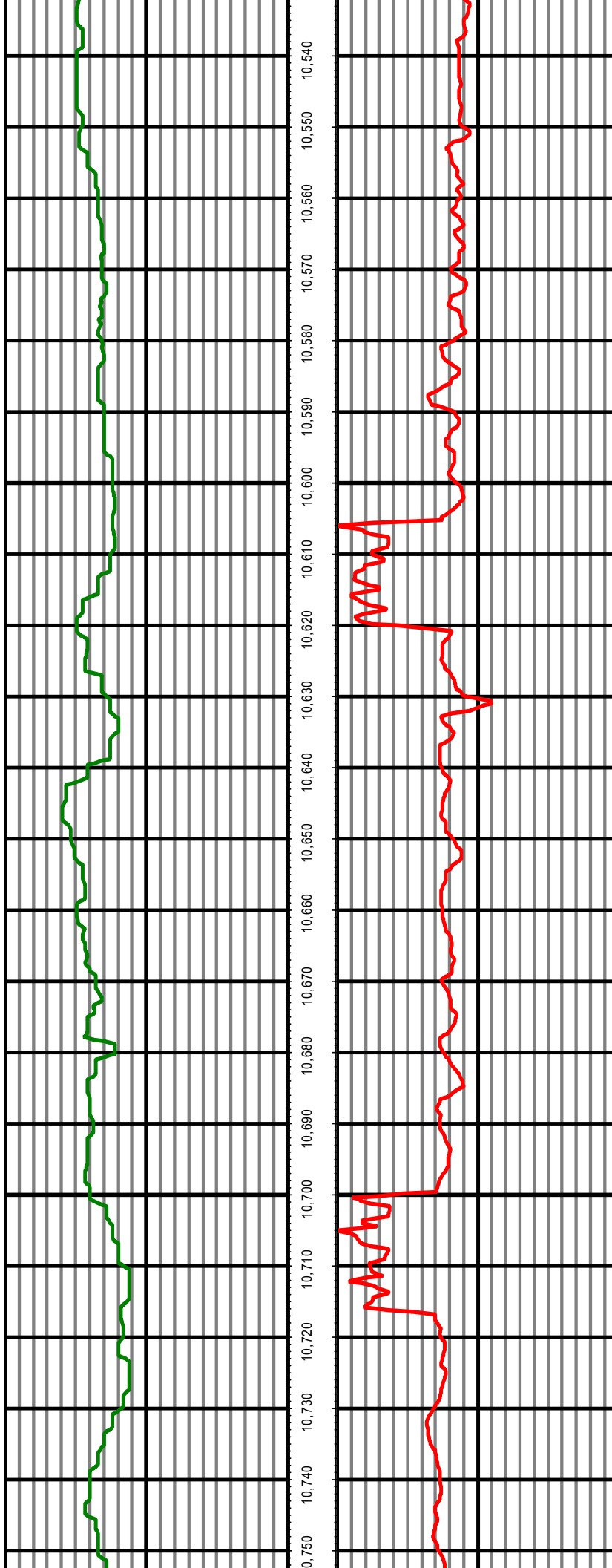
MD: 10176.00 INC: 90.70 AZ: 181.30

MD: 10270.00 INC: 90.40 AZ: 179.70



MD: 10365.00 INC: 88.90 AZ: 179.10

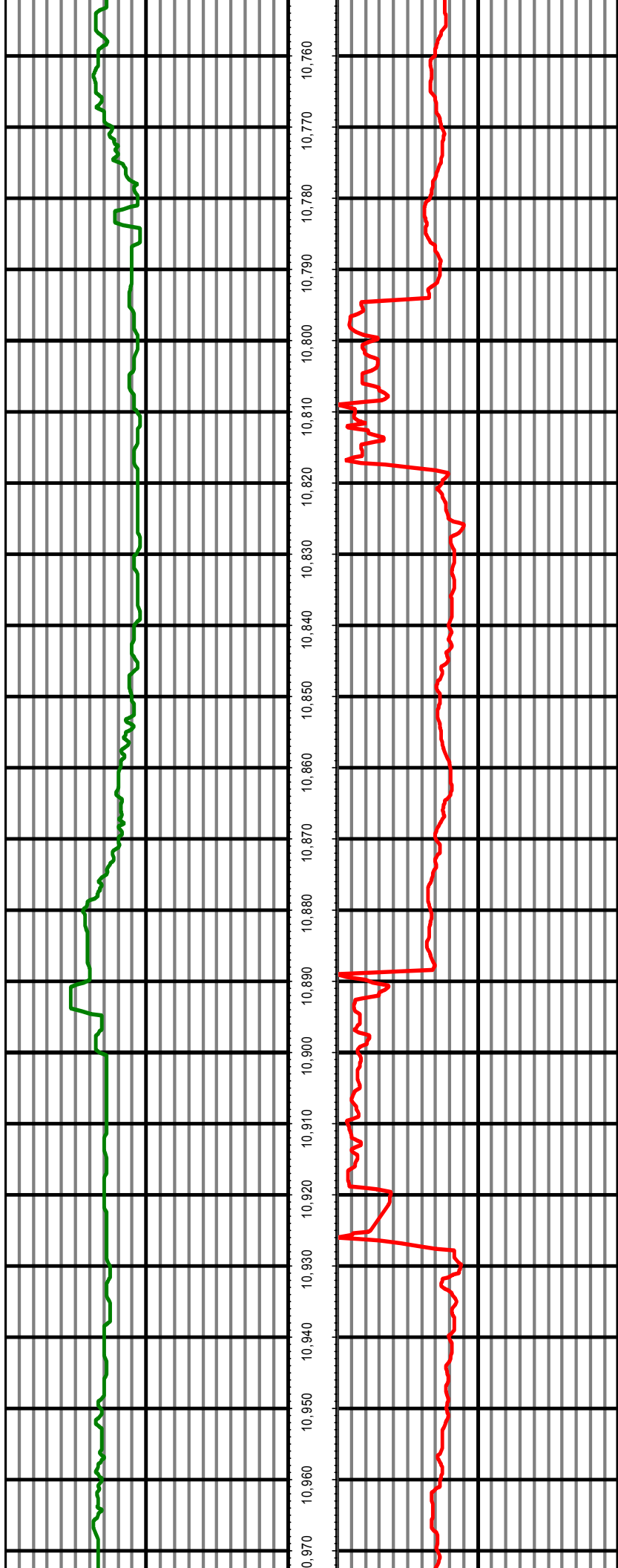
MD: 10459.00 INC: 88.80 AZ: 178.70



MD: 10554.00 INC: 89.70 AZ: 179.70

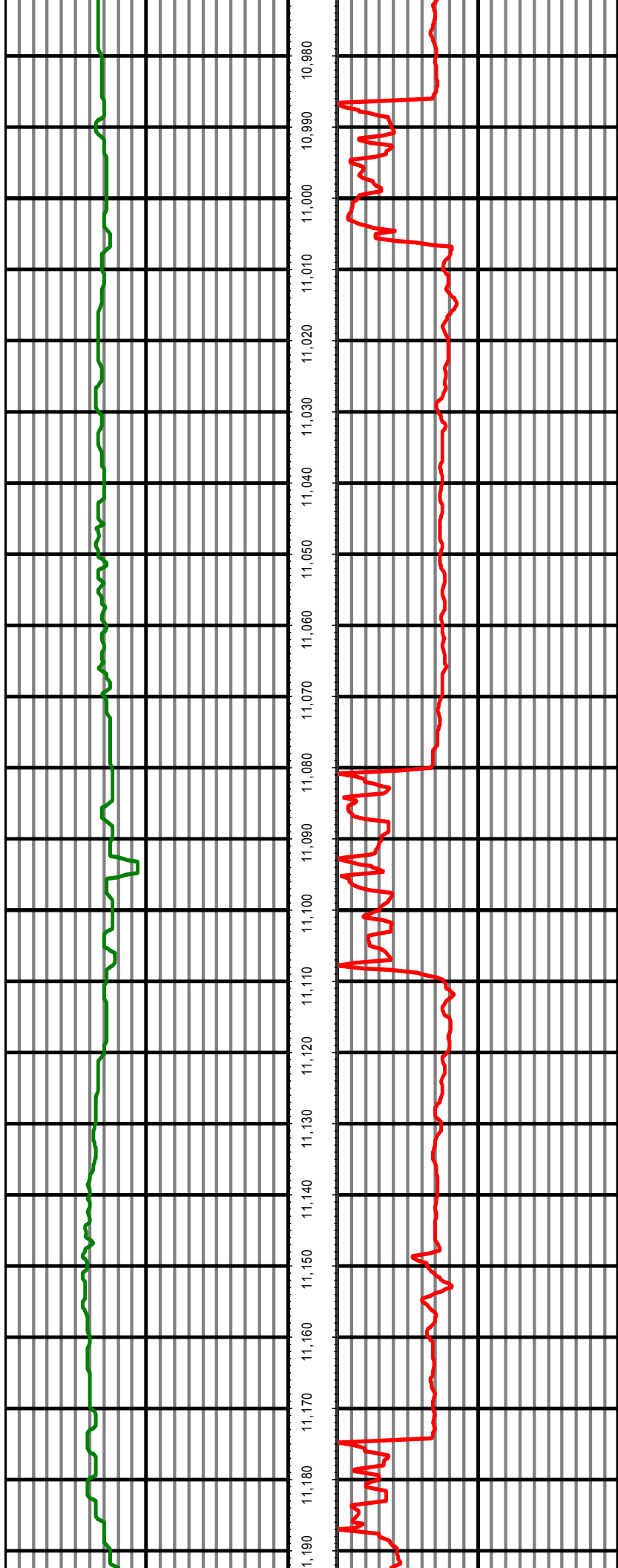
MD: 10648.00 INC: 91.80 AZ: 181.10

MD: 10743.00 INC: 93.50 AZ: 179.90



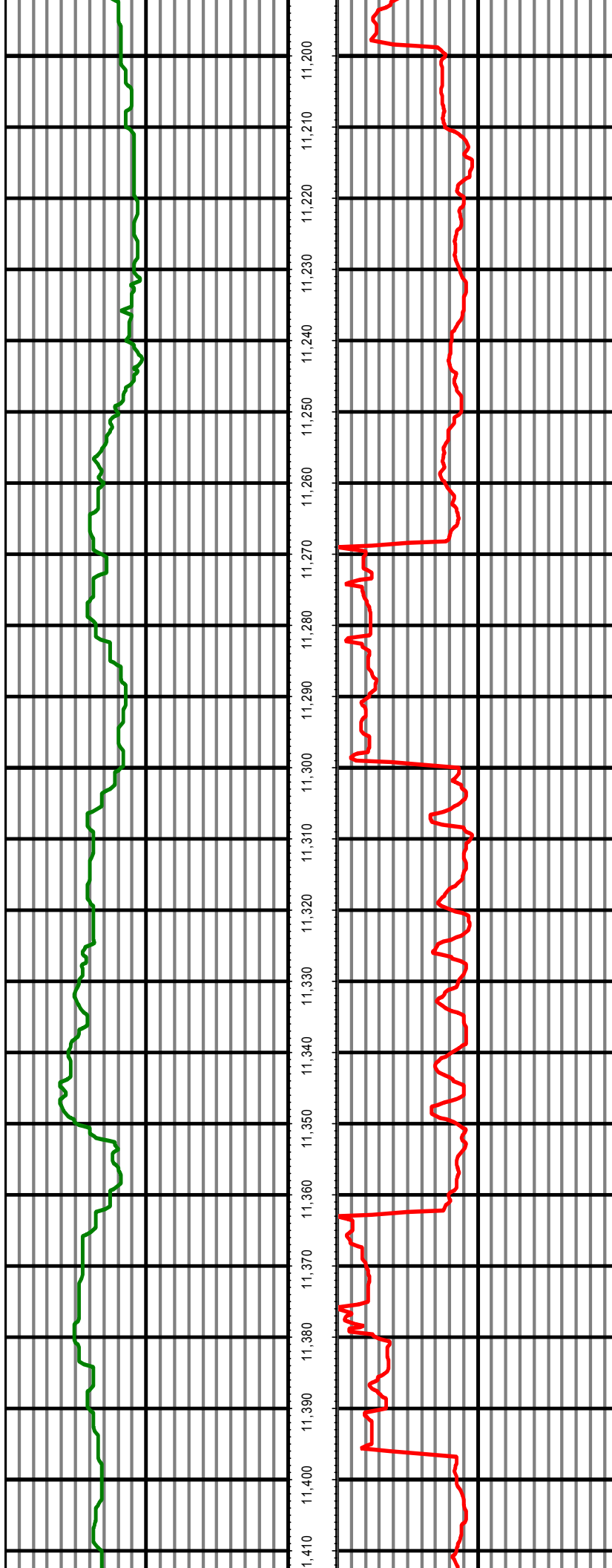
MD: 10838.00 INC: 93.00 AZ: 178.20

MD: 10933.00 INC: 89.90 AZ: 178.10



MD: 11027.00 INC: 90.60 AZ: 180.40

MD: 11122.00 INC: 88.80 AZ: 179.90

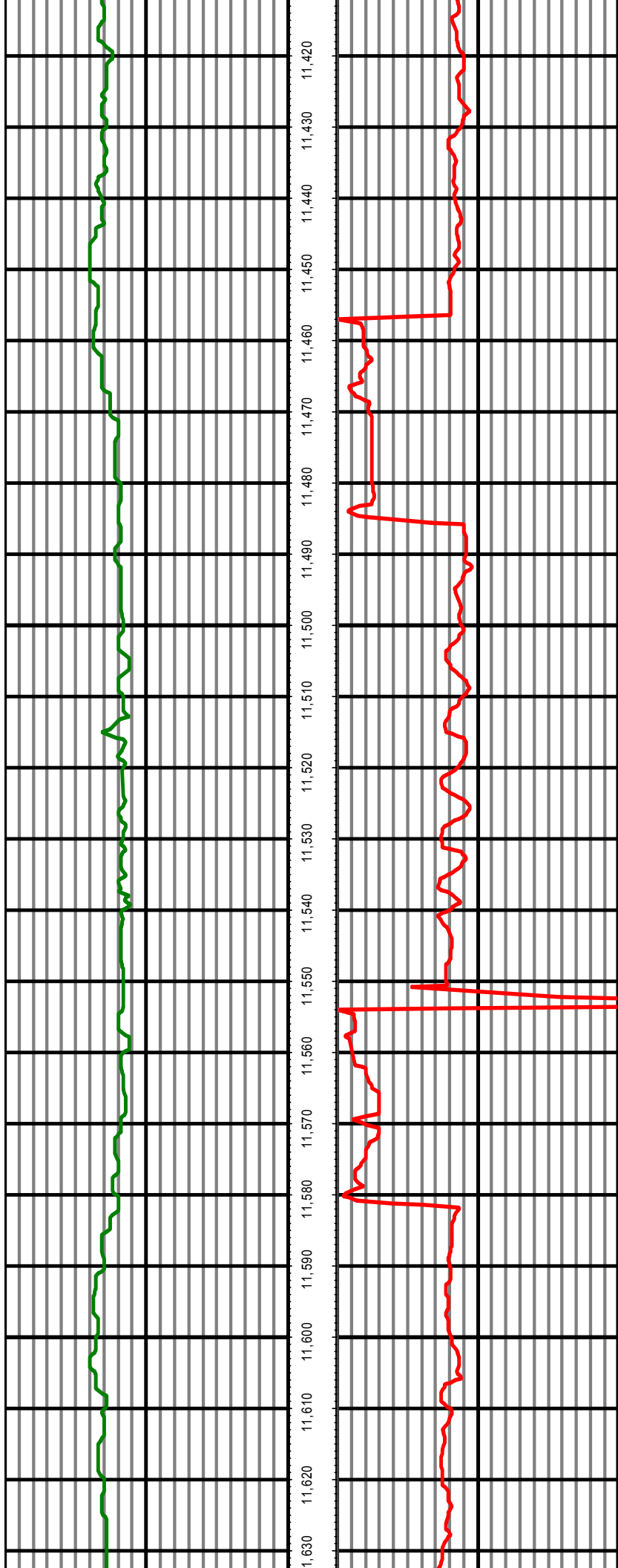


11,200  
11,210  
11,220  
11,230  
11,240  
11,250  
11,260  
11,270  
11,280  
11,290  
11,300  
11,310  
11,320  
11,330  
11,340  
11,350  
11,360  
11,370  
11,380  
11,390  
11,400  
1,410

MD: 11216.00 INC: 86.90 AZ: 180.40

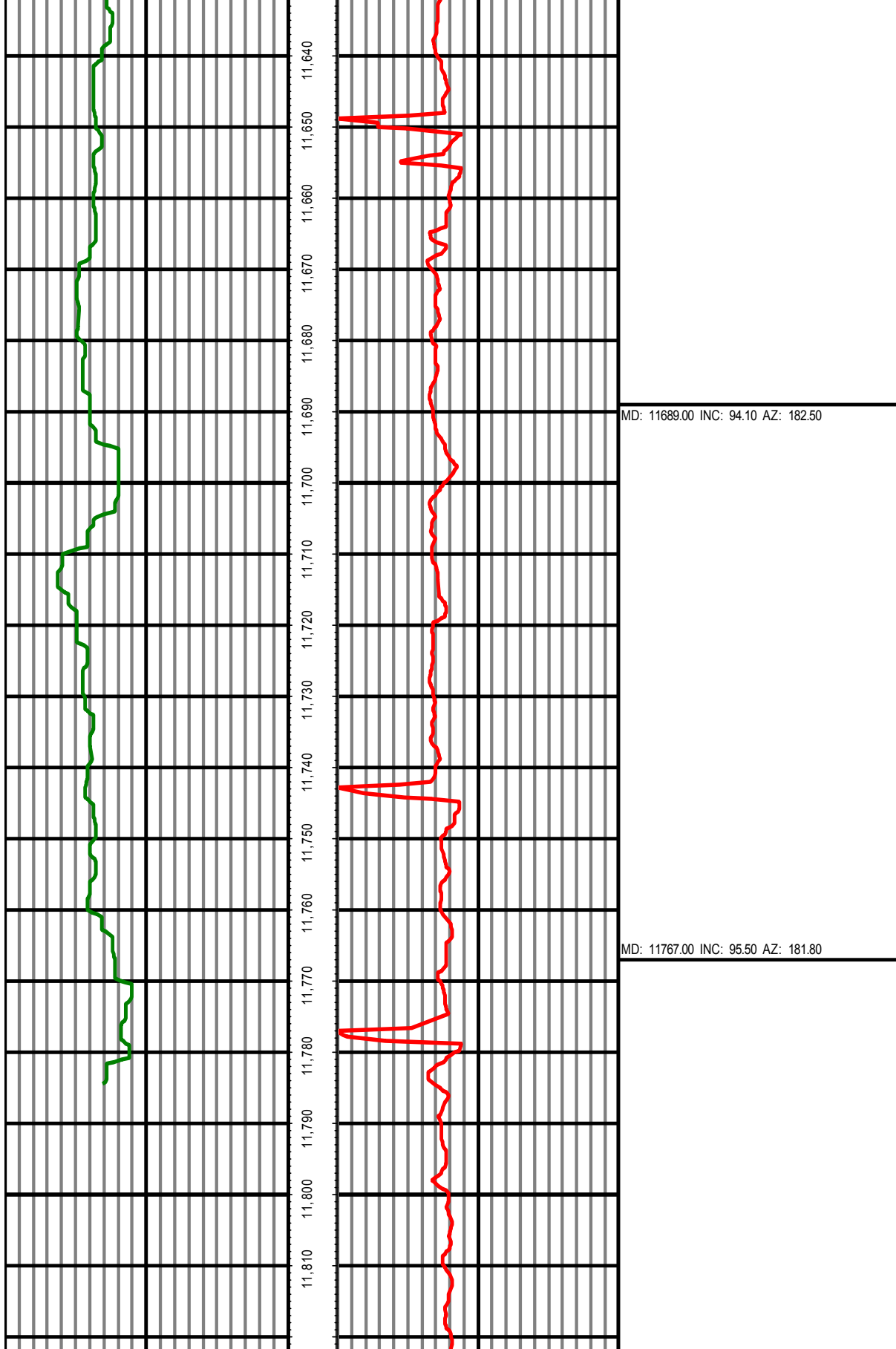
MD: 11311.00 INC: 85.70 AZ: 181.00

MD: 11406.00 INC: 87.30 AZ: 181.80



MD: 11500.00 INC: 89.60 AZ: 182.50

MD: 11595.00 INC: 92.40 AZ: 183.10



0.00 GR(API) 300.00 MD 0.00 ROP(FT/HR) 800.00 Surveys (MD/INC/AZ)  
 FT