



Cathedral Energy Services

CATHEDRAL**135479**

5":100' - MD

11/25/2013 10:20:41 AM

Oper. Company: Encana Oil & Gas**Country:** US**State / Province:** CO**County / Parish:** Weld**Started:** 11/15/2013 12:30 PM**API/UWI:** 05-123-37787-00**Field:** DJ Wattenburg**Well:** Lochbuie 2A-31H**Rig:** H&P 522**Ended:** 11/24/2013 12:30 PM**Personnel****Day Hand:** Jared Nichols**Night Hand:** Andrew Stewart**Comp. Emp:** Cathedral Energy Service**Location****Latitude:** 40.014080**Longitude:** -104.712200**Elev. GL:** 5008**Elev. DF:** 30**Elev. KB:** 5038**Hole Data**

Size	From	To
12.25	0	1502
8.75	1502	7701
6.125	7701	11899

Casing Data

Size	From	To
9 5/8	0	1496
7	0	7691
4 1/2	0	11897

Bit Sizes

Size	From	To
12.25	0	1502
8.75	1502	7701
6.125	7701	11899

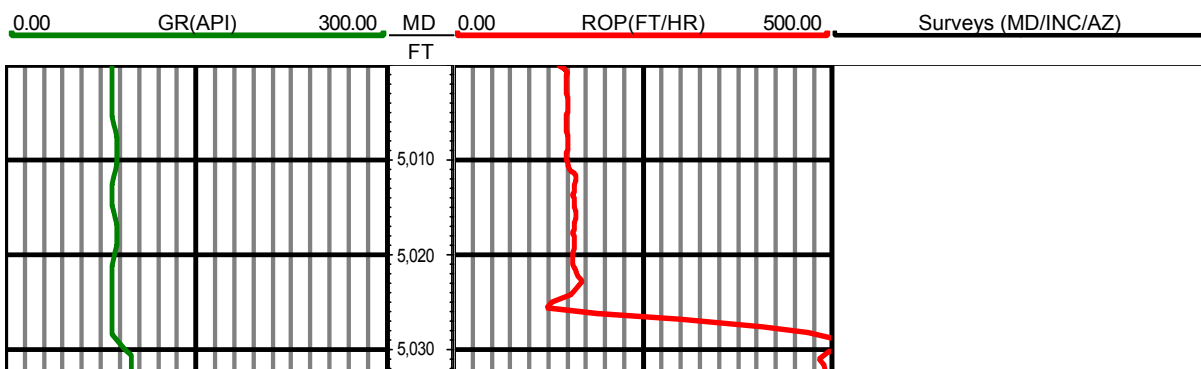
Mud Data

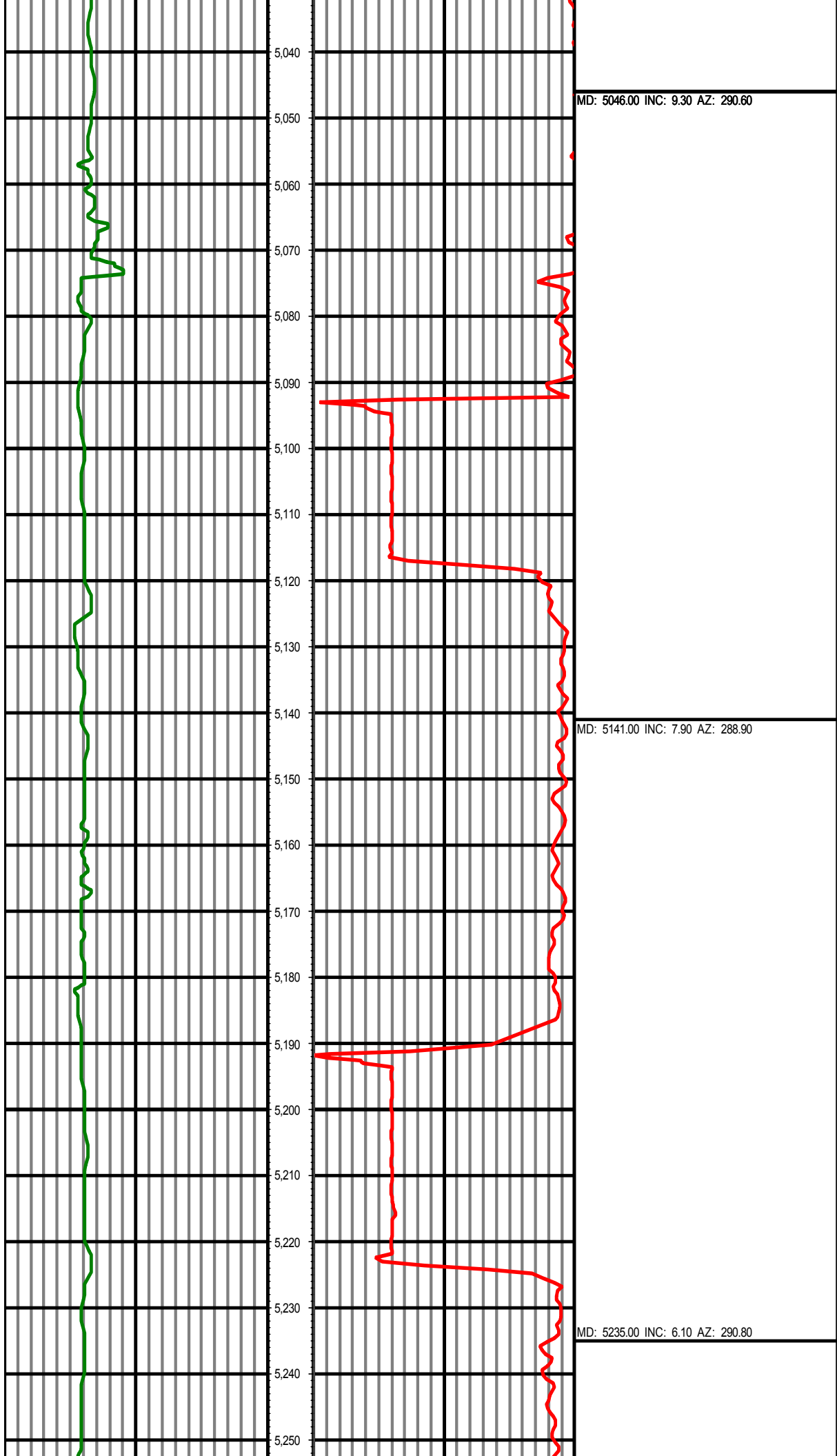
Type	Weight	Density	Viscosity	Rm	Rmf	Rmc	From	To
------	--------	---------	-----------	----	-----	-----	------	----

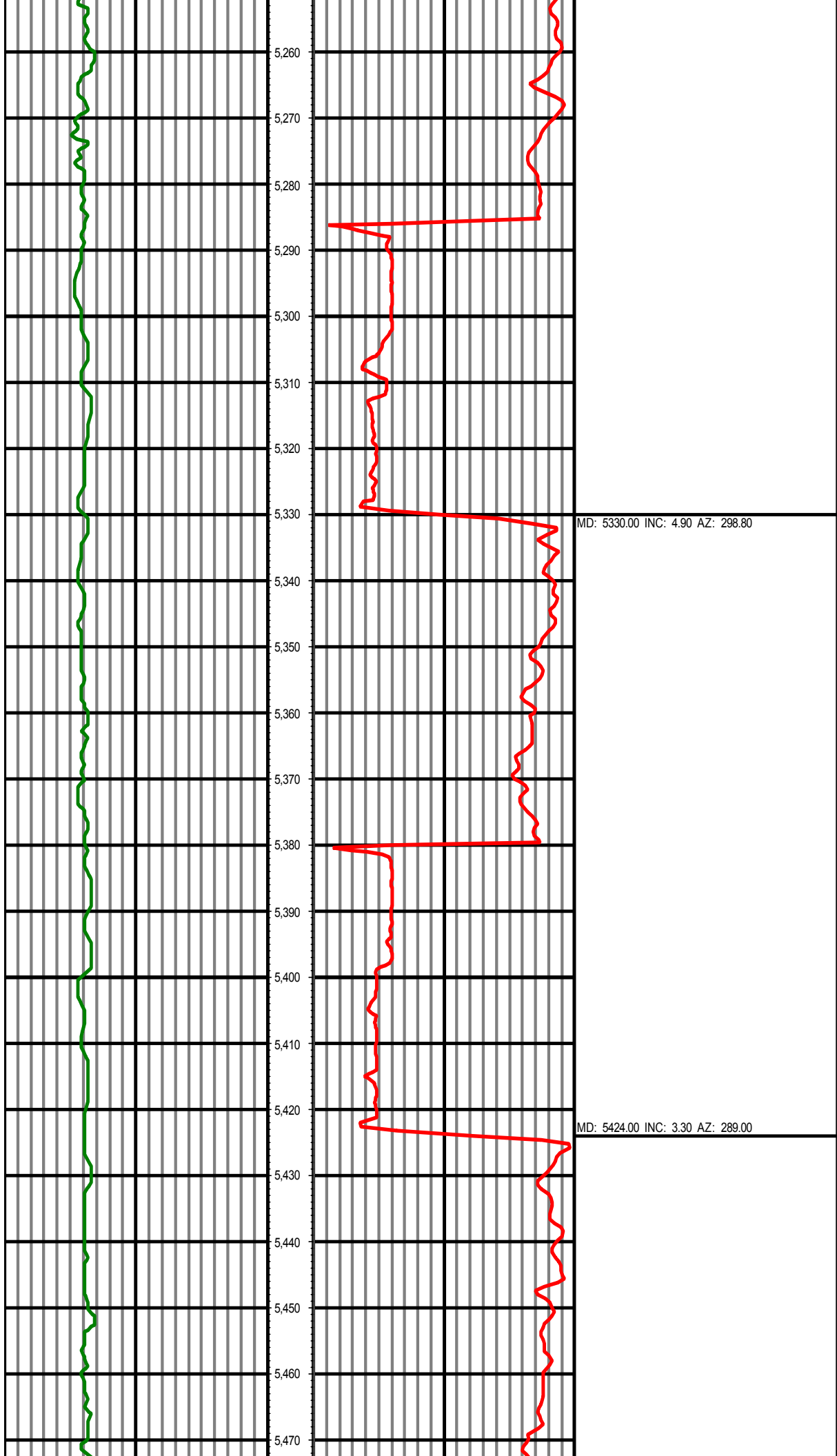
Tool Run Data

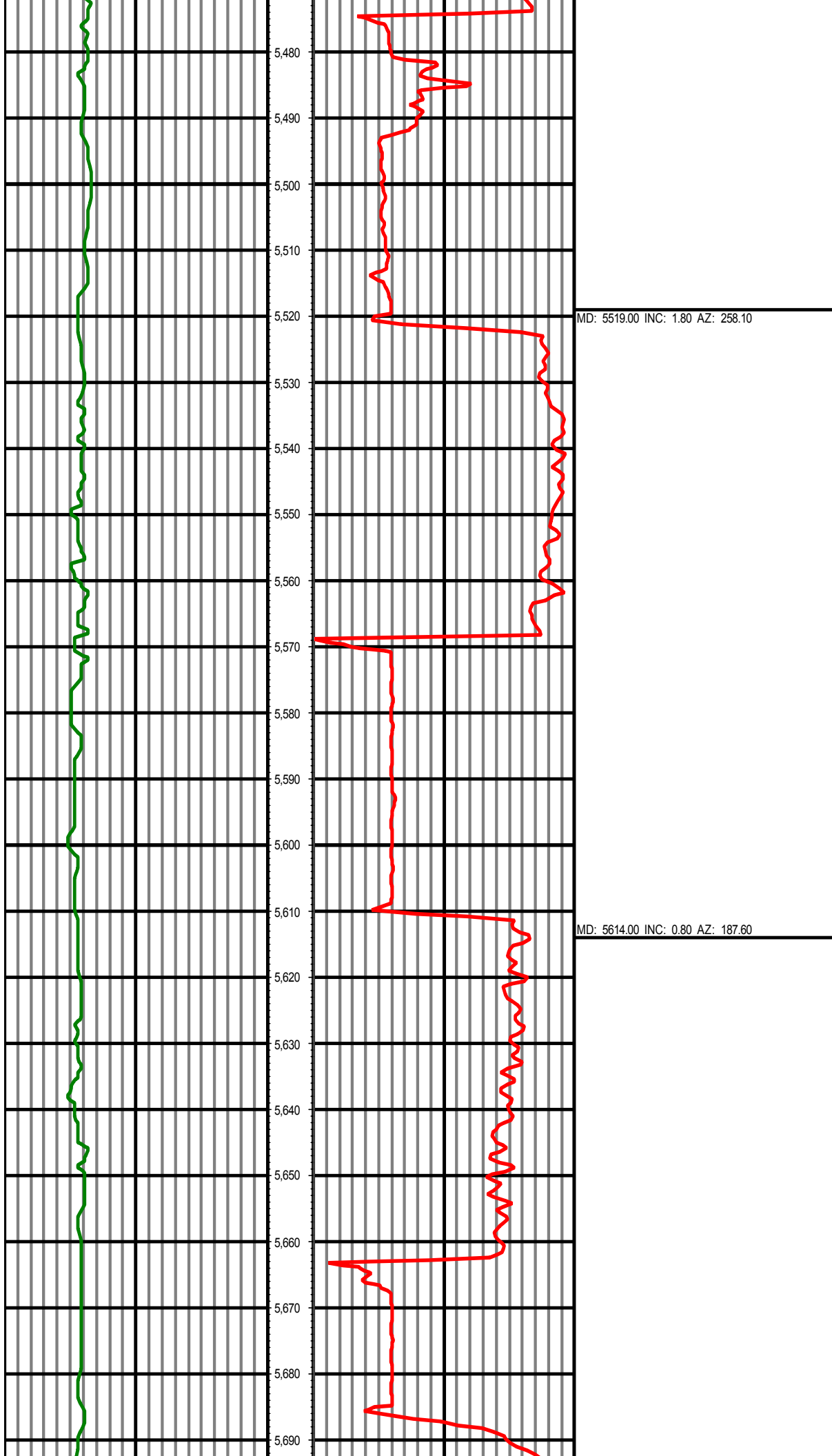
Serial Number	Gamma Offset	Resist. Offset	Start Time	Start Depth	End Time	End Depth
309	40.15	0	11/15/2013 11:30:28 PM	1502	11/17/2013 5:00:28 PM	6798
309	40.45	0	11/17/2013 8:00:36 PM	6798	11/19/2013 4:00:36 PM	7701
232	37.29	0	11/22/2013 4:00:52 AM	7701	11/24/2013 11:30:52 PM	11889

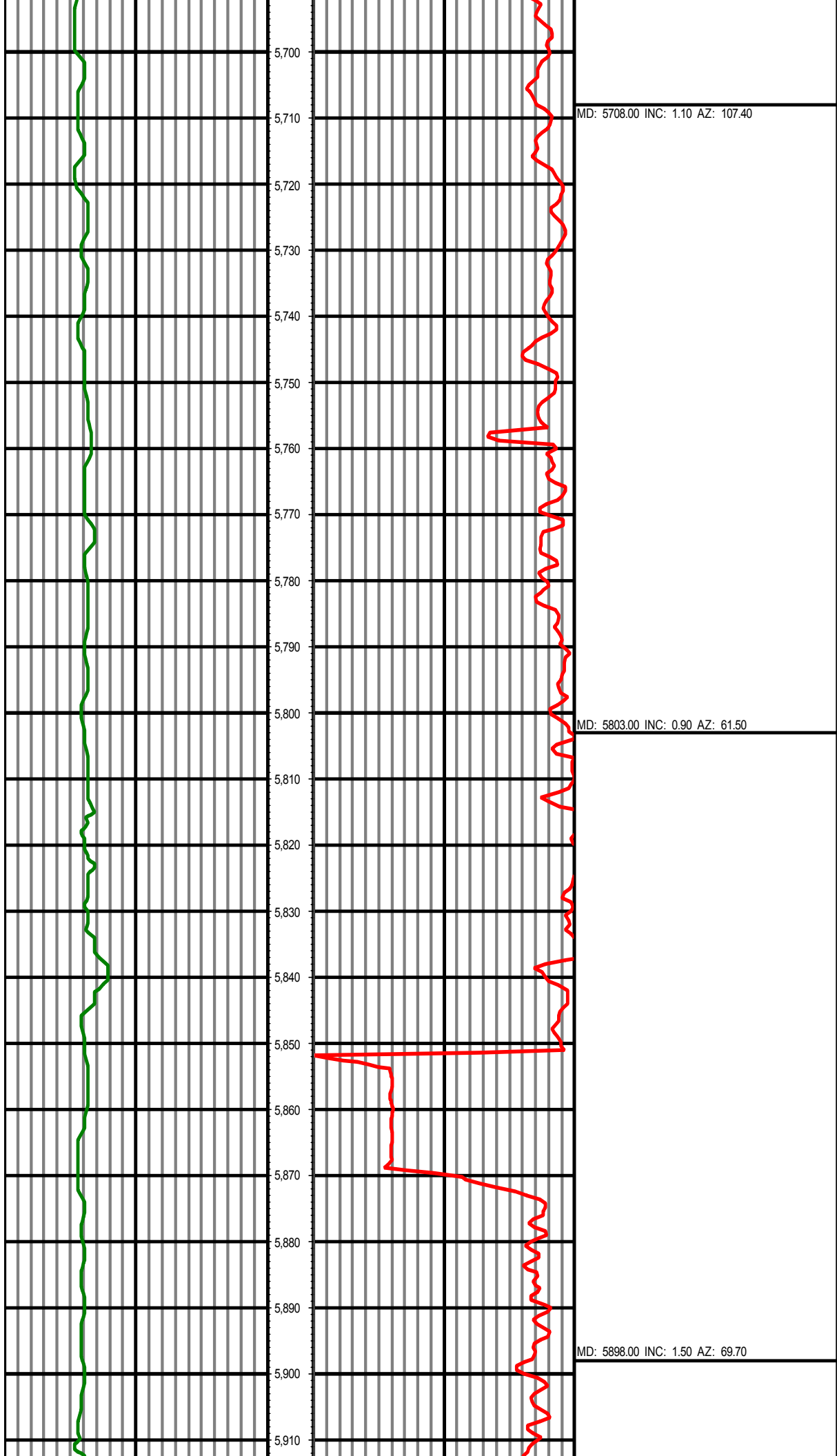
All interpretations are opinions based on inferences from electrical or other measurements and we cannot and do not guarantee the accuracy or correctness of any interpretation, and we shall not except in the case of gross or willful negligence on our part, be liable or responsible for any loss, cost damages or expenses incurred or sustained by anyone resulting from an interpretation made by any of our officers, agents, or employees.

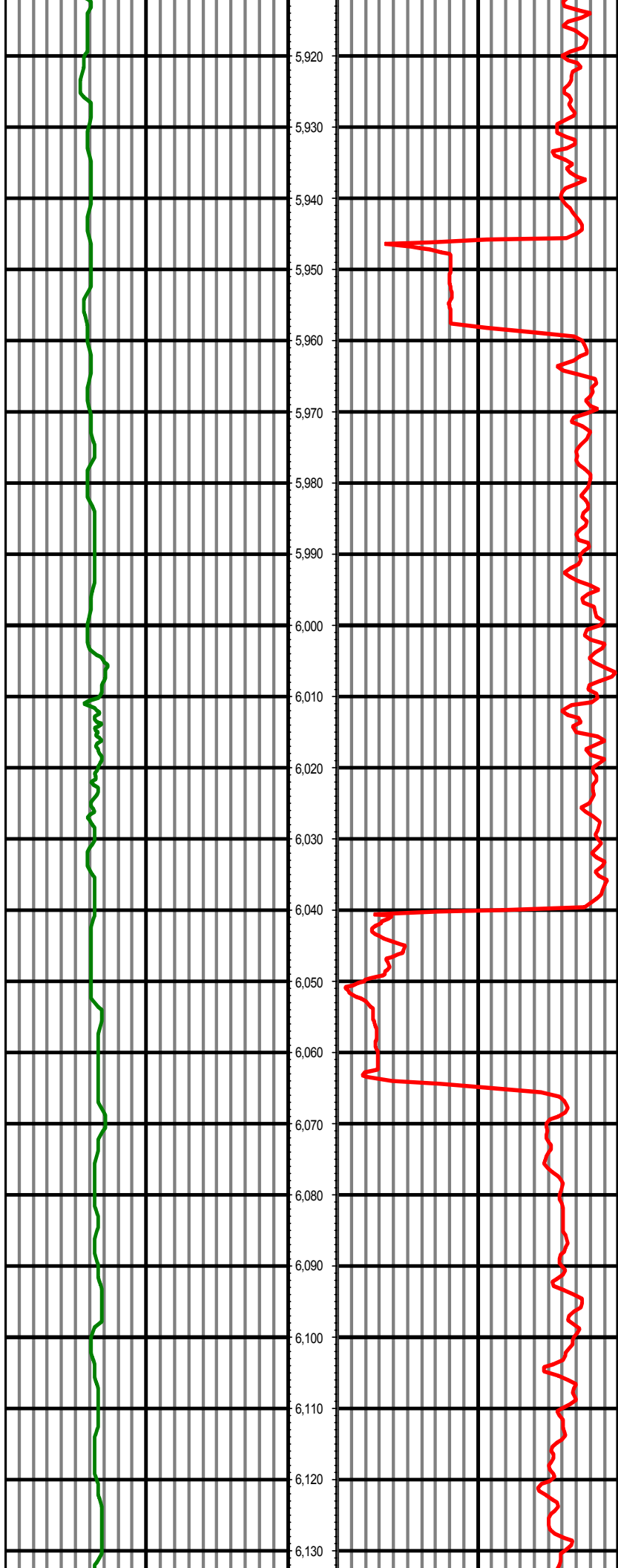






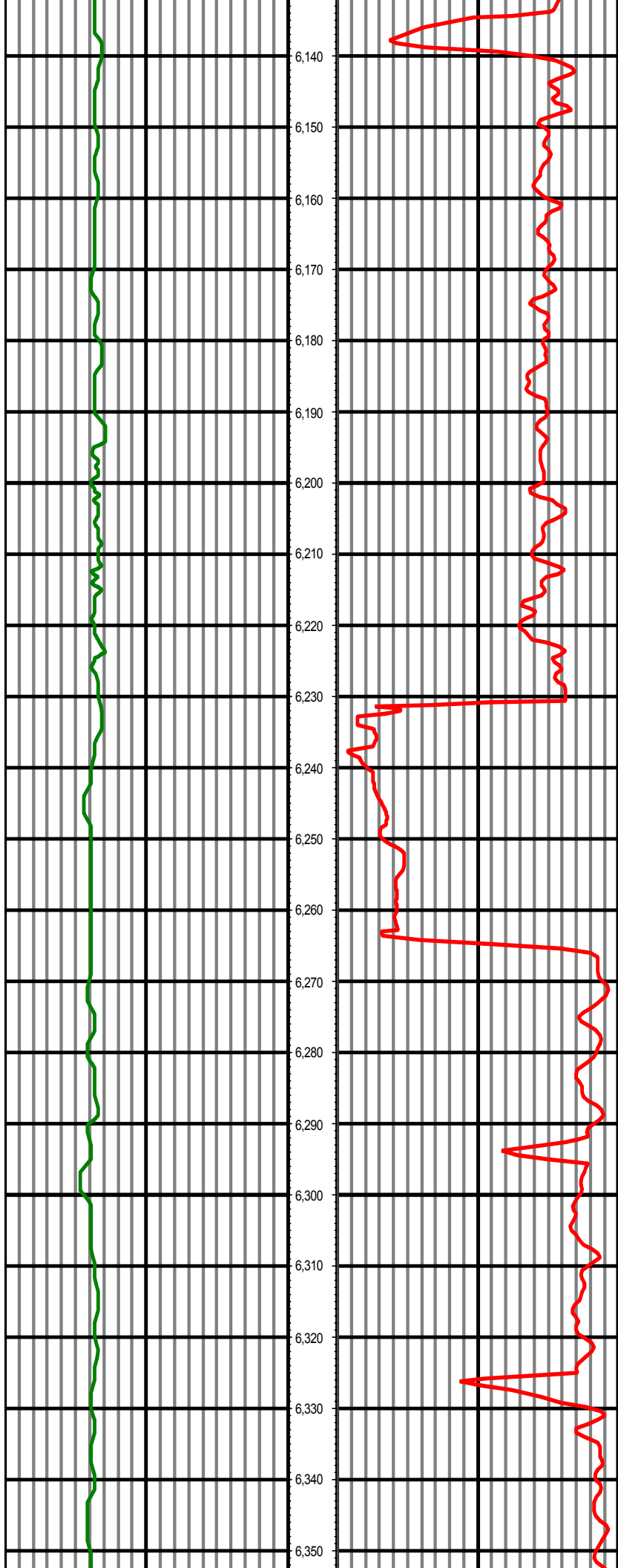






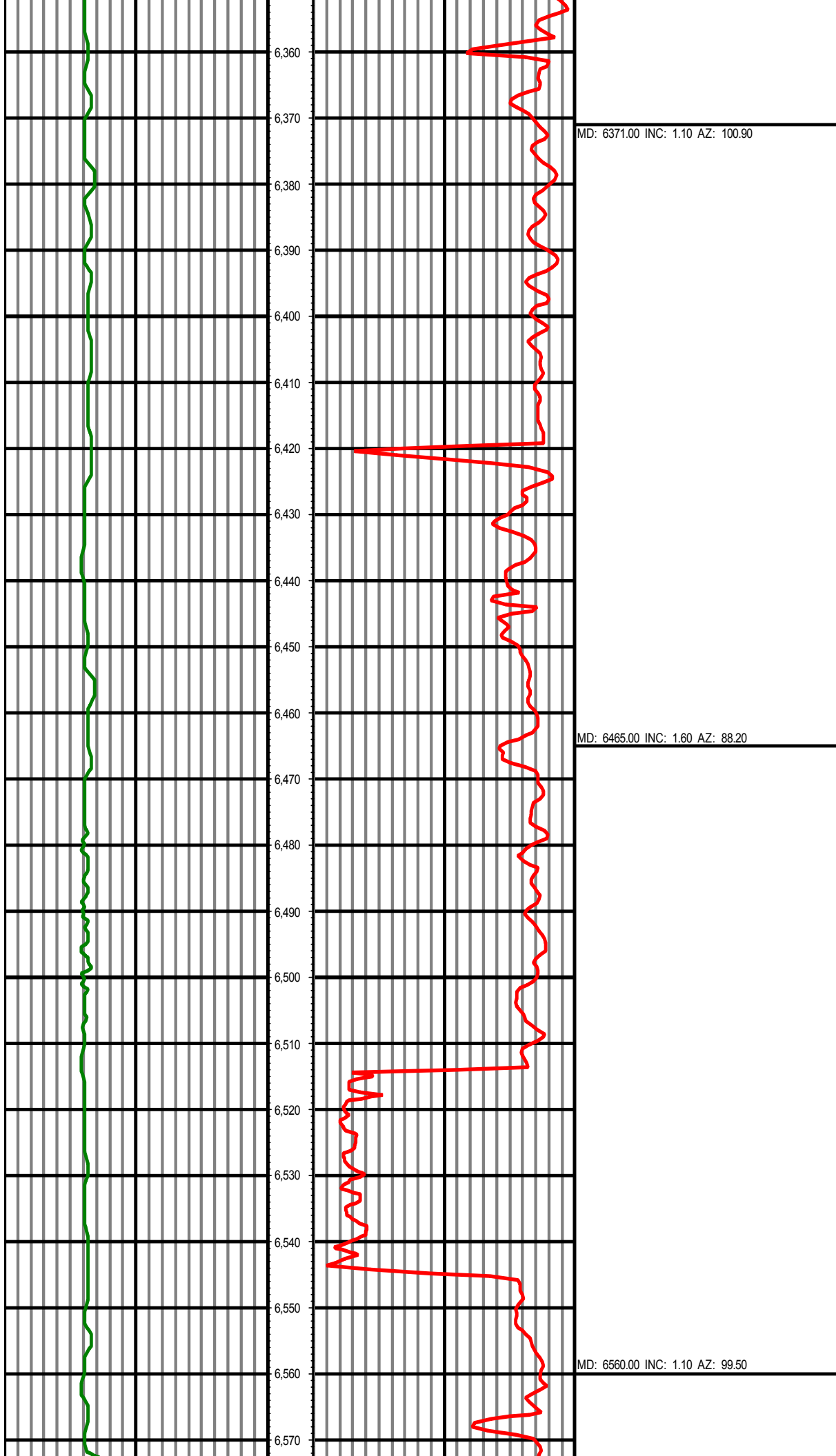
MD: 5992.00 INC: 1.40 AZ: 32.90

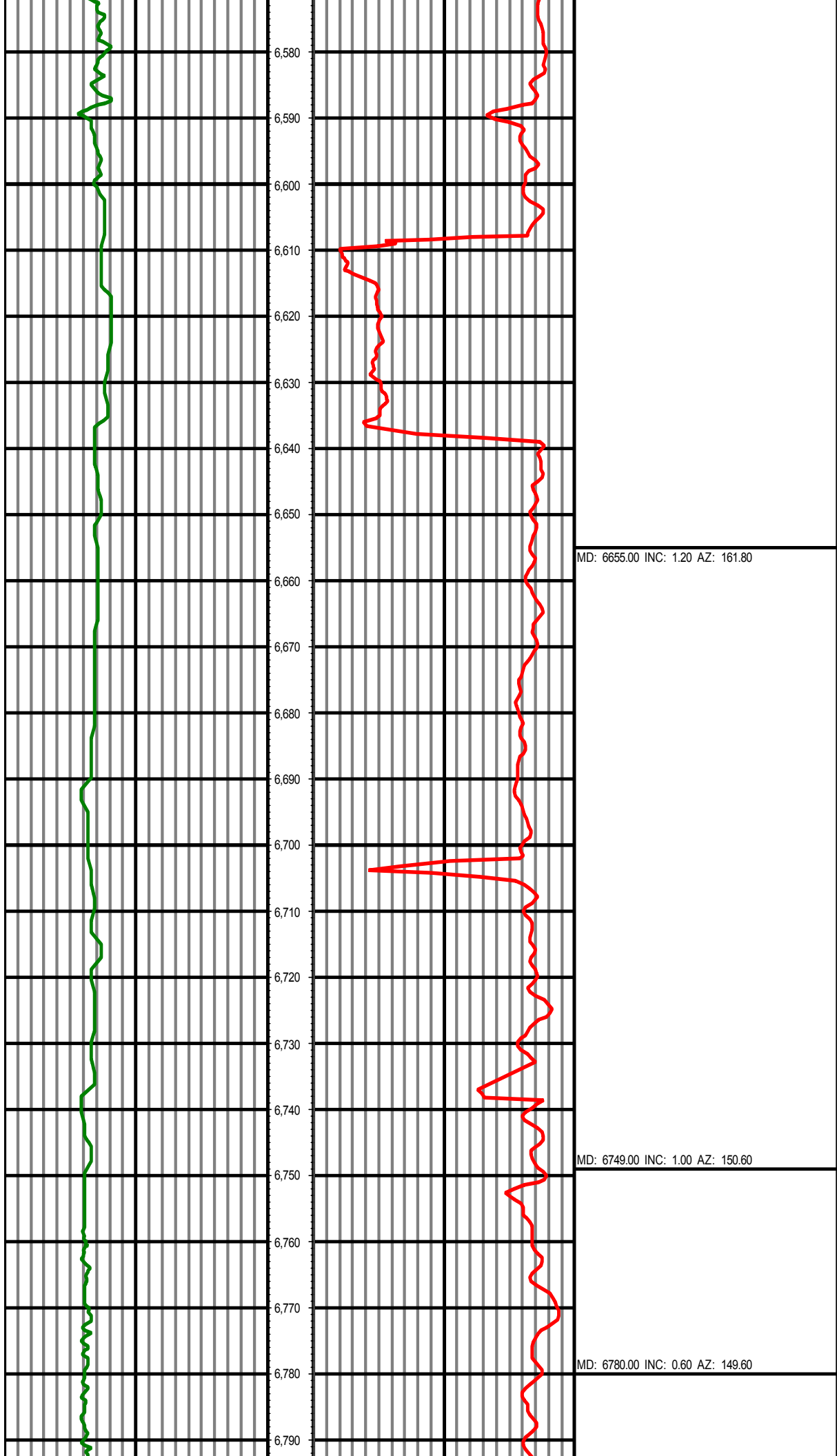
MD: 6087.00 INC: 1.00 AZ: 54.60

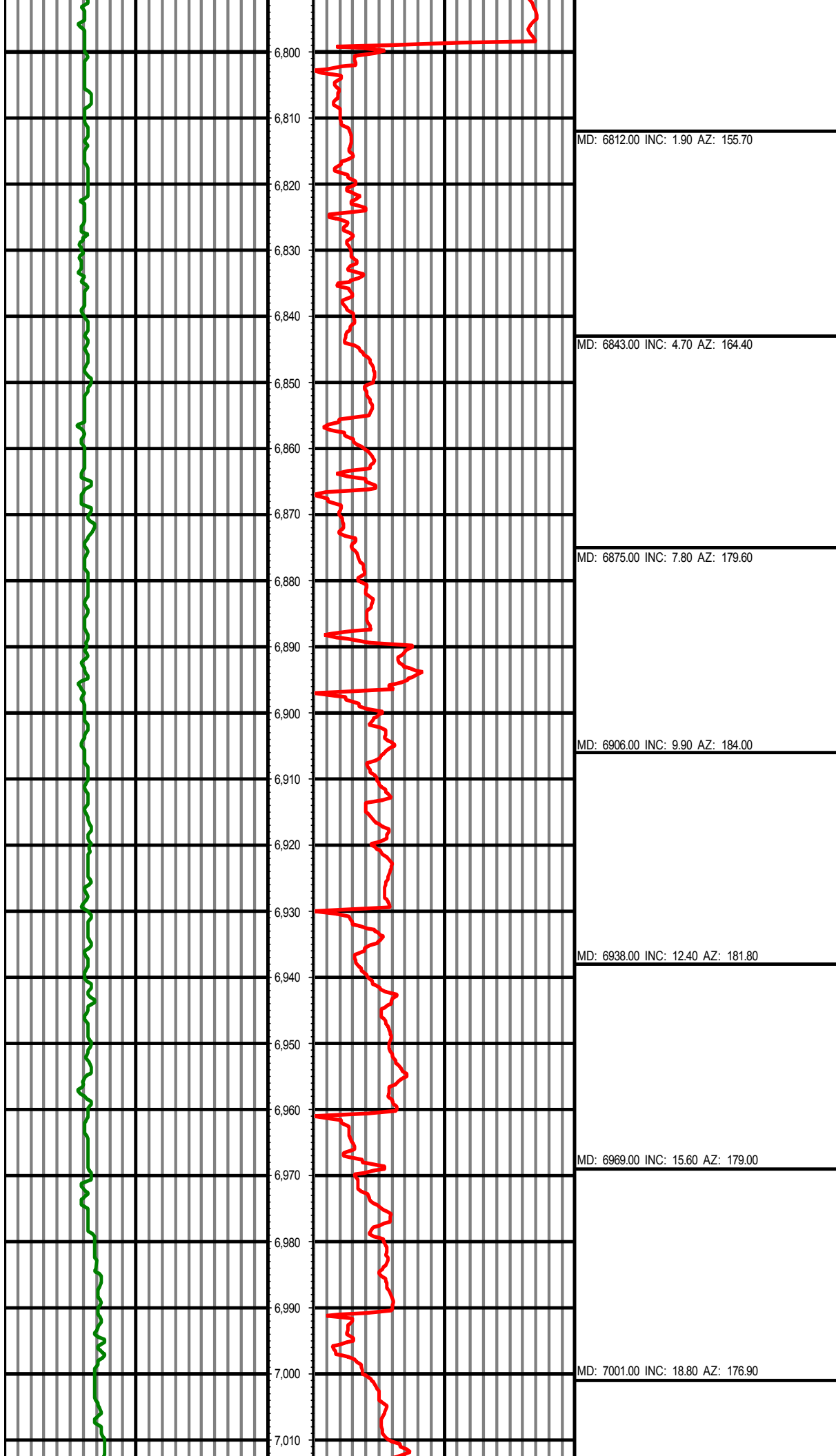


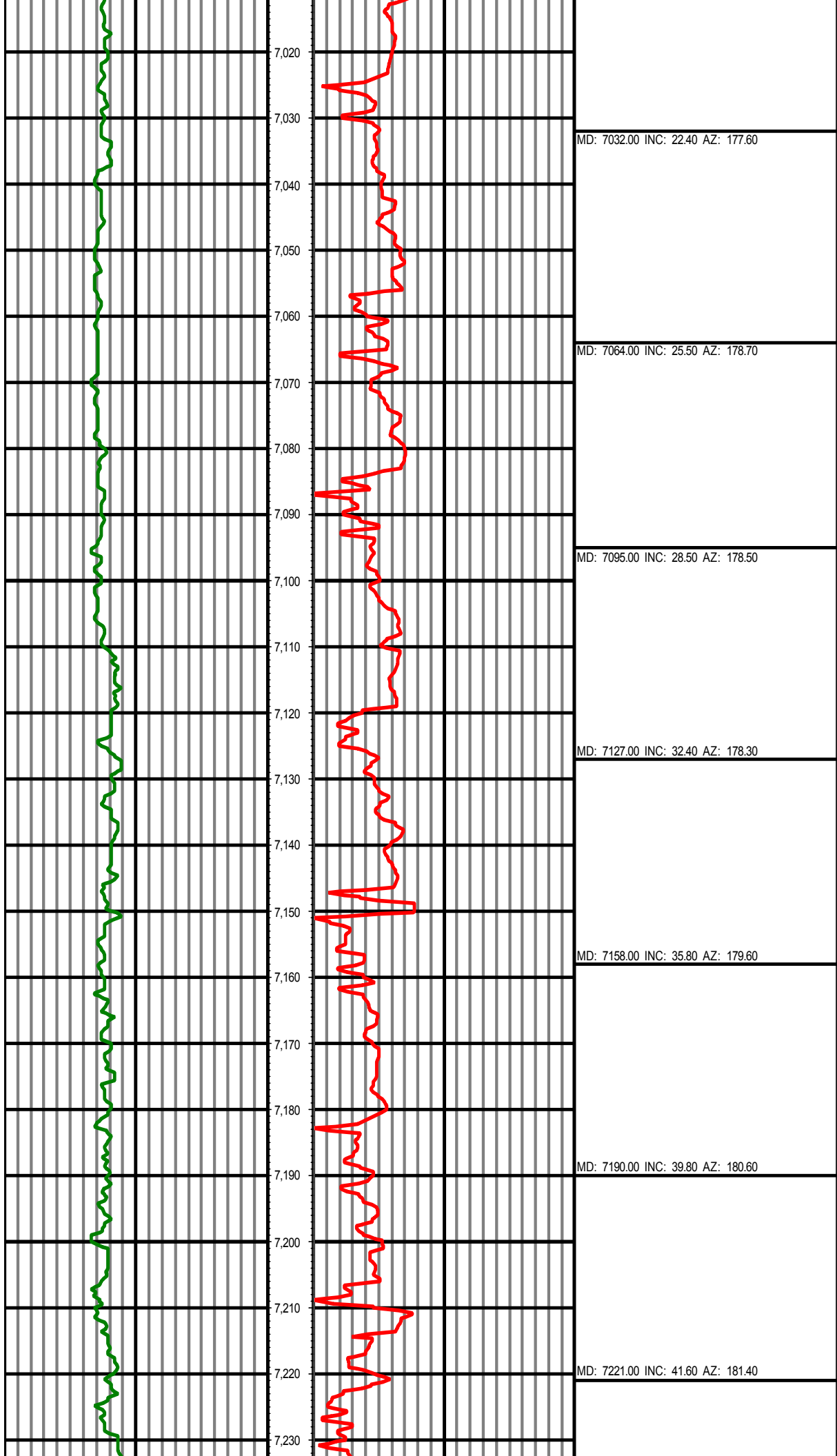
MD: 6182.00 INC: 1.40 AZ: 54.40

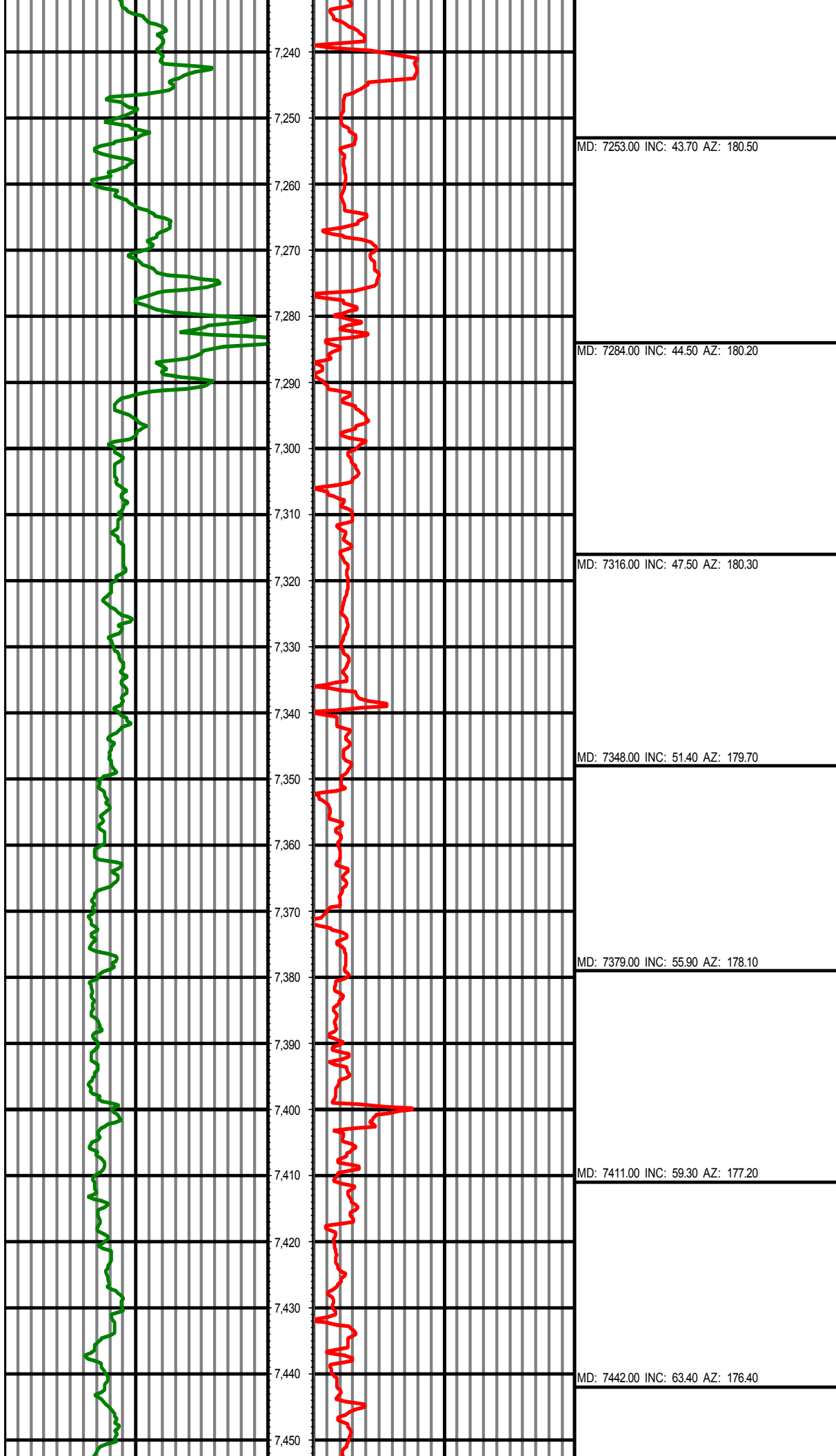
MD: 6276.00 INC: 1.00 AZ: 156.80

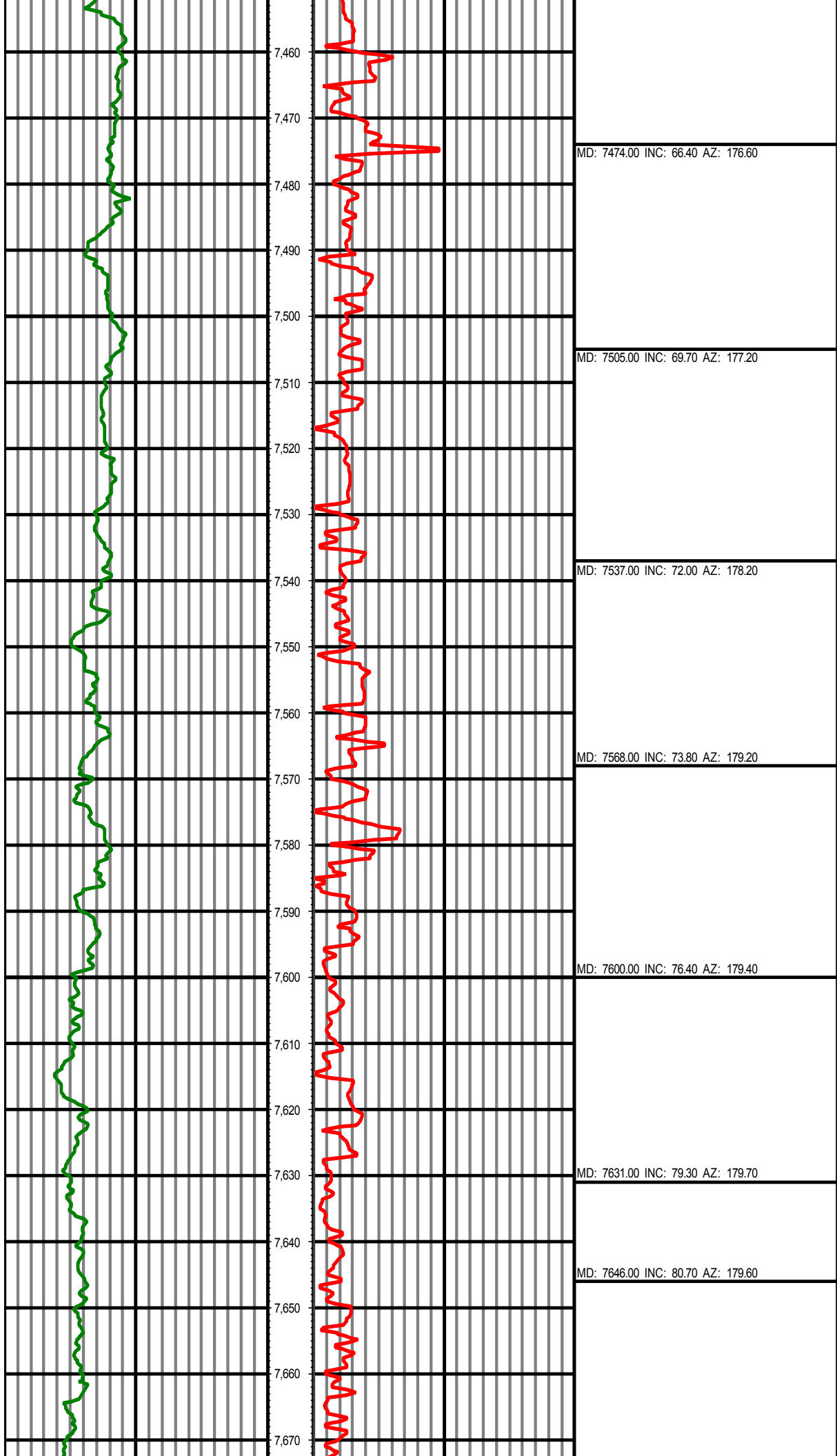


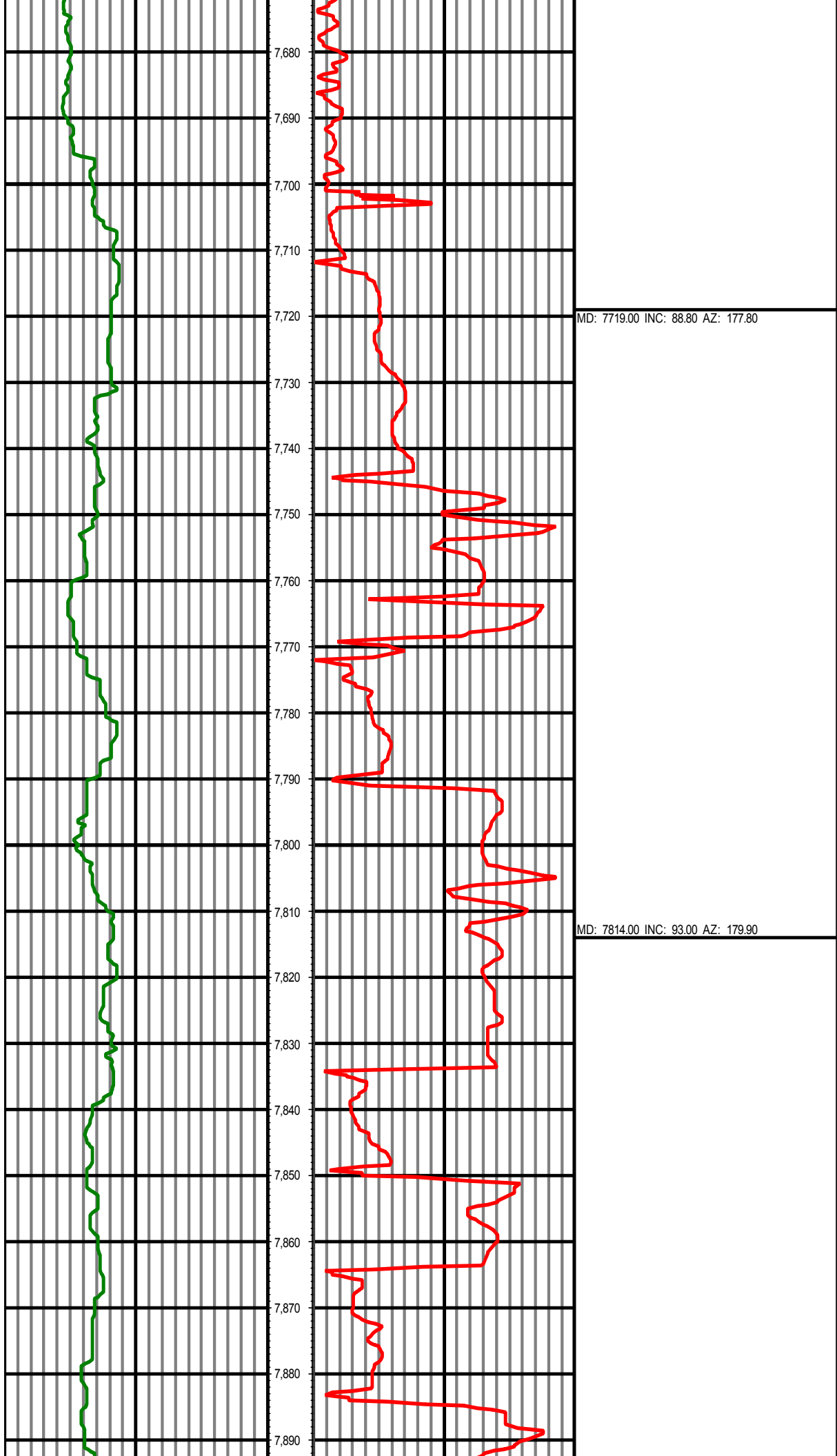




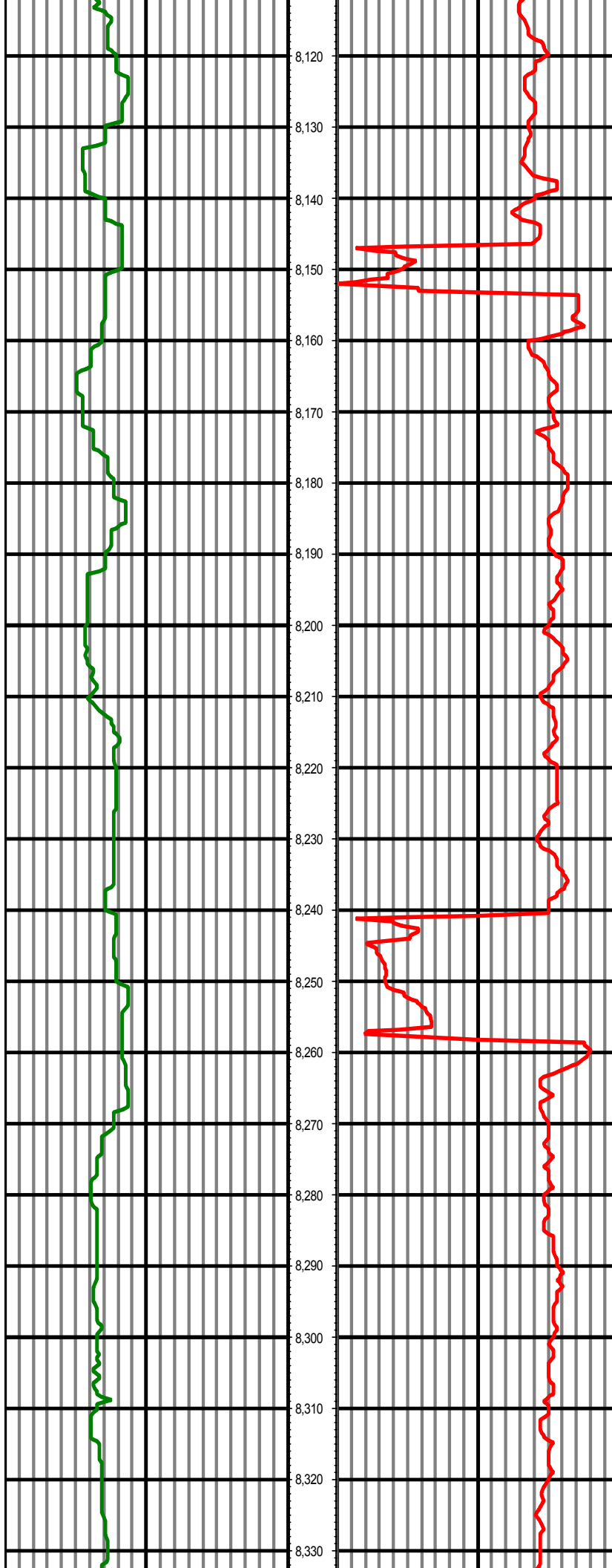






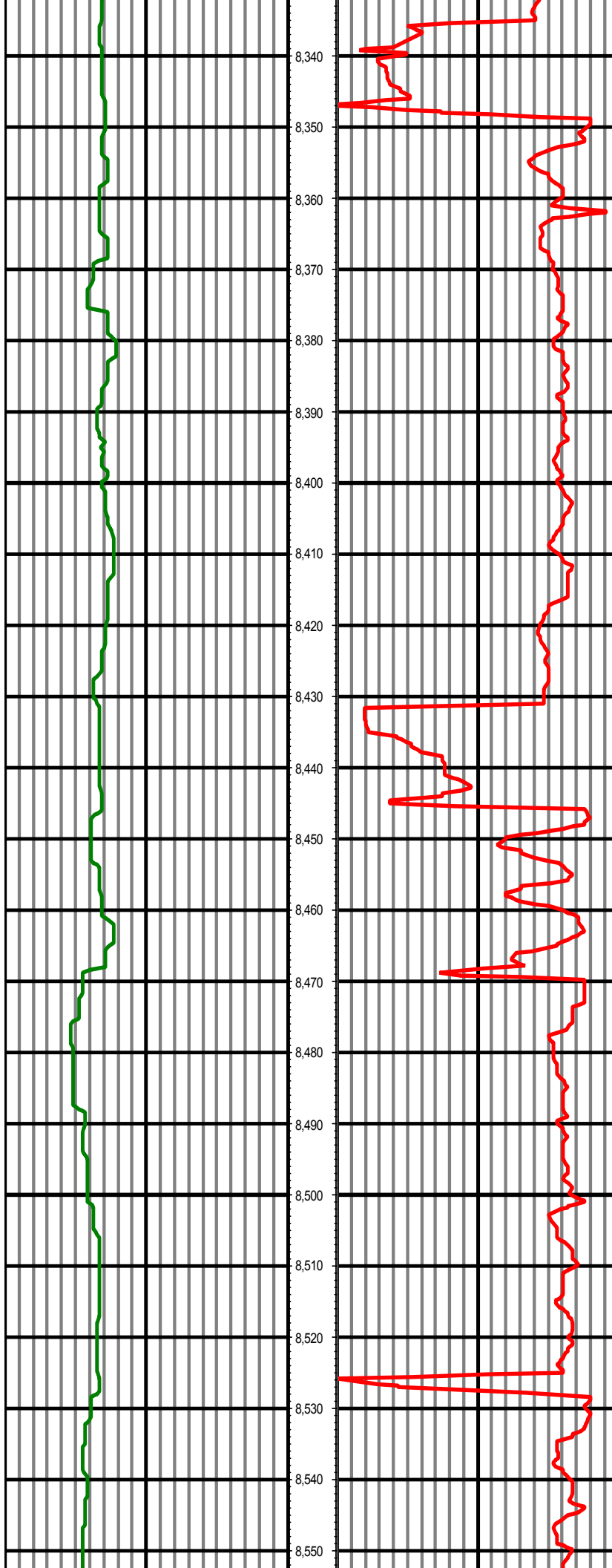






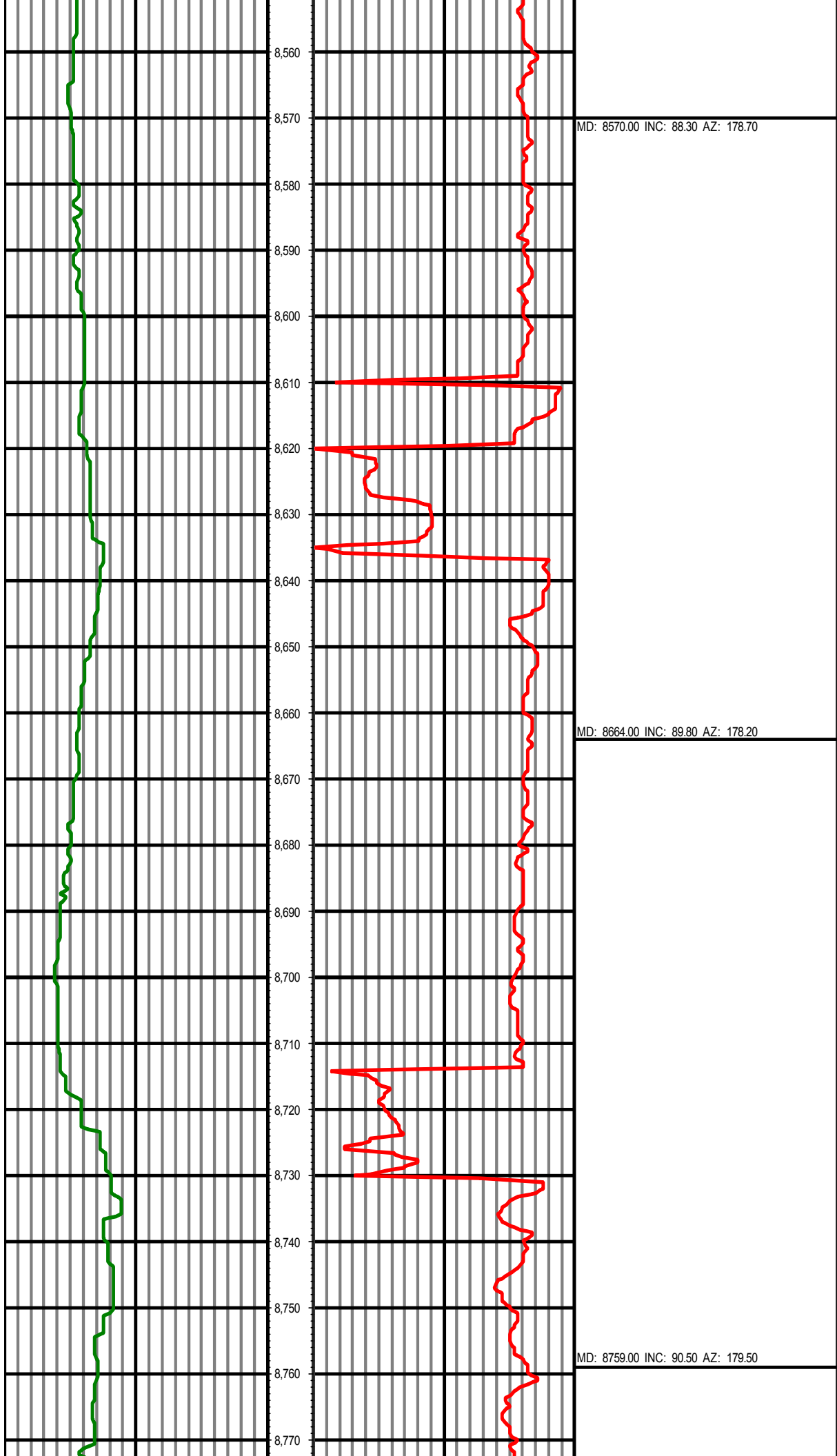
MD: 8192.00 INC: 91.20 AZ: 181.80

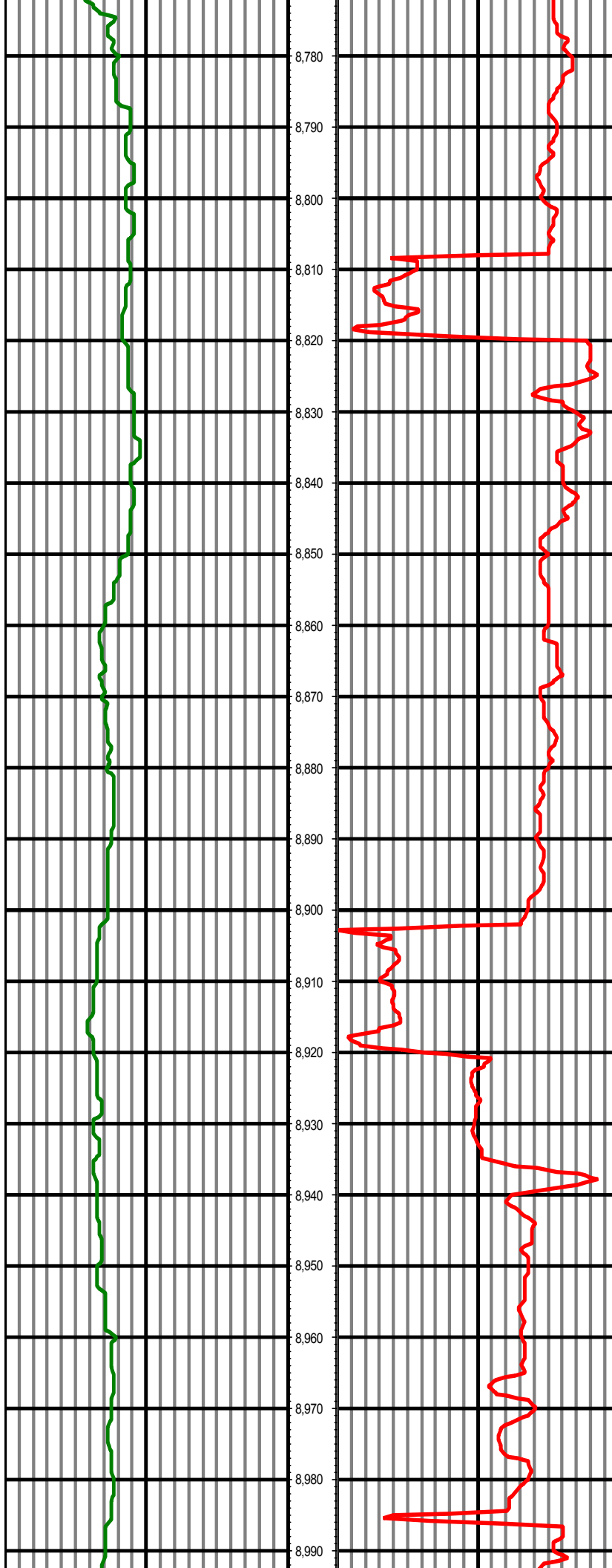
MD: 8286.00 INC: 89.80 AZ: 181.10



MD: 8381.00 INC: 90.00 AZ: 180.00

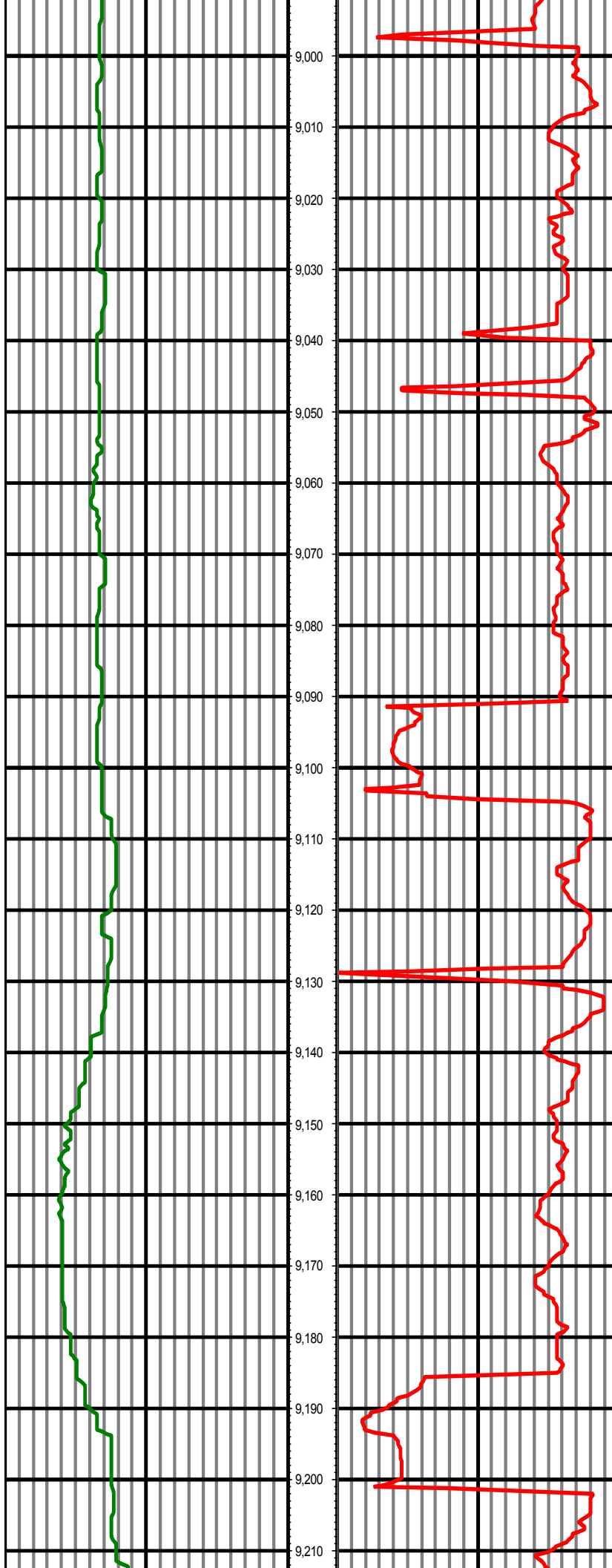
MD: 8475.00 INC: 89.00 AZ: 179.30





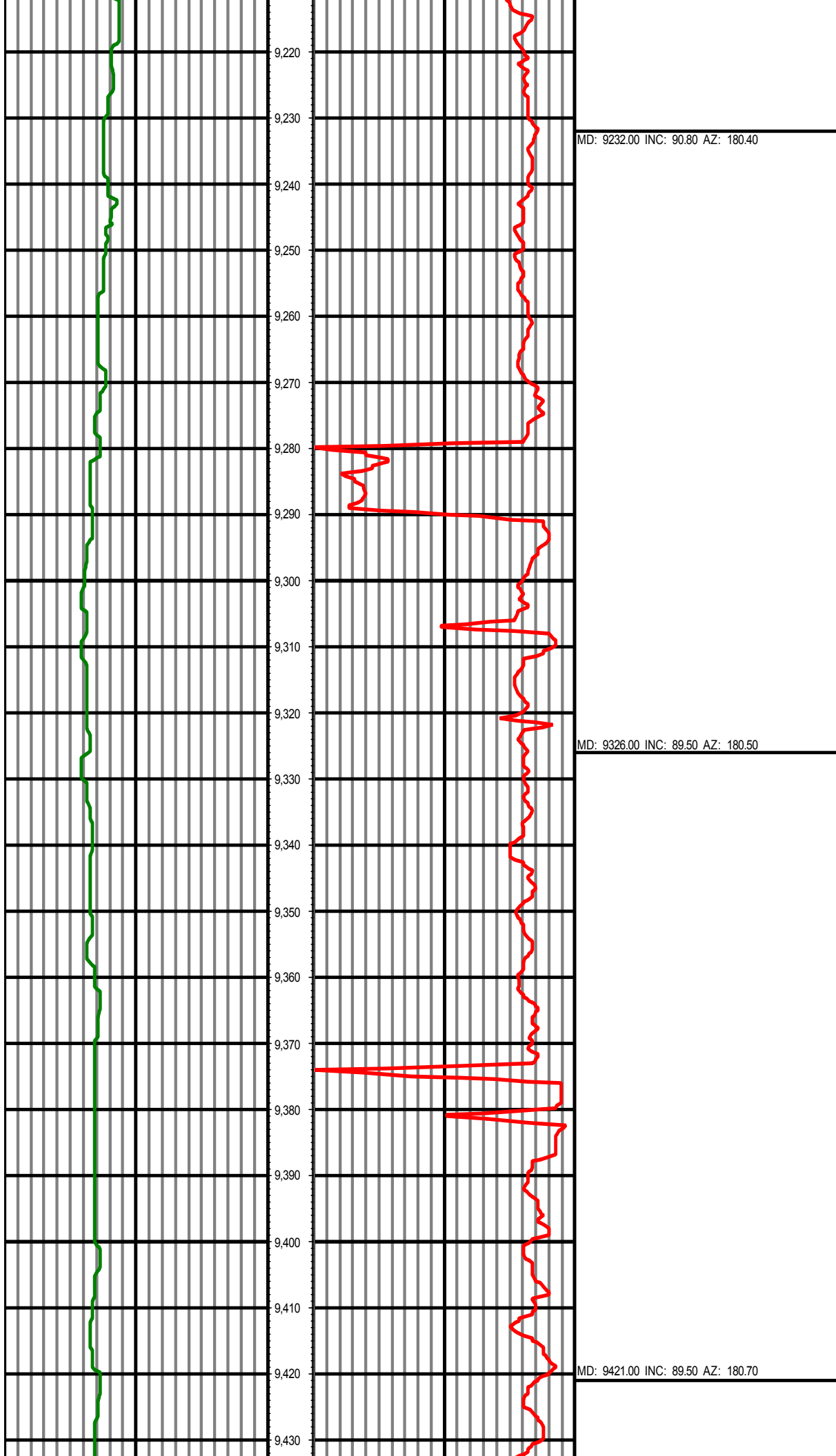
MD: 8853.00 INC: 90.70 AZ: 181.00

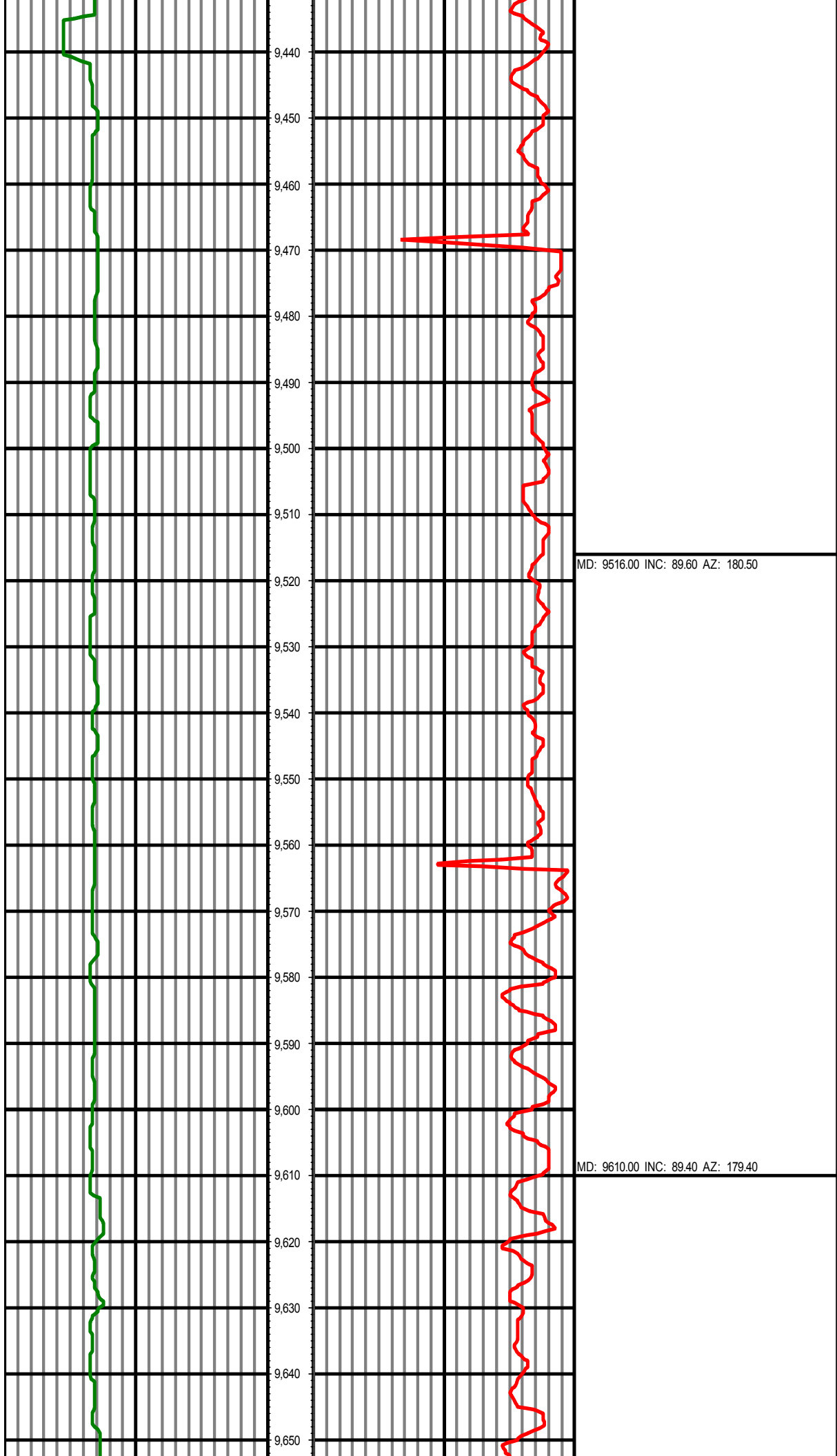
MD: 8948.00 INC: 90.00 AZ: 180.80

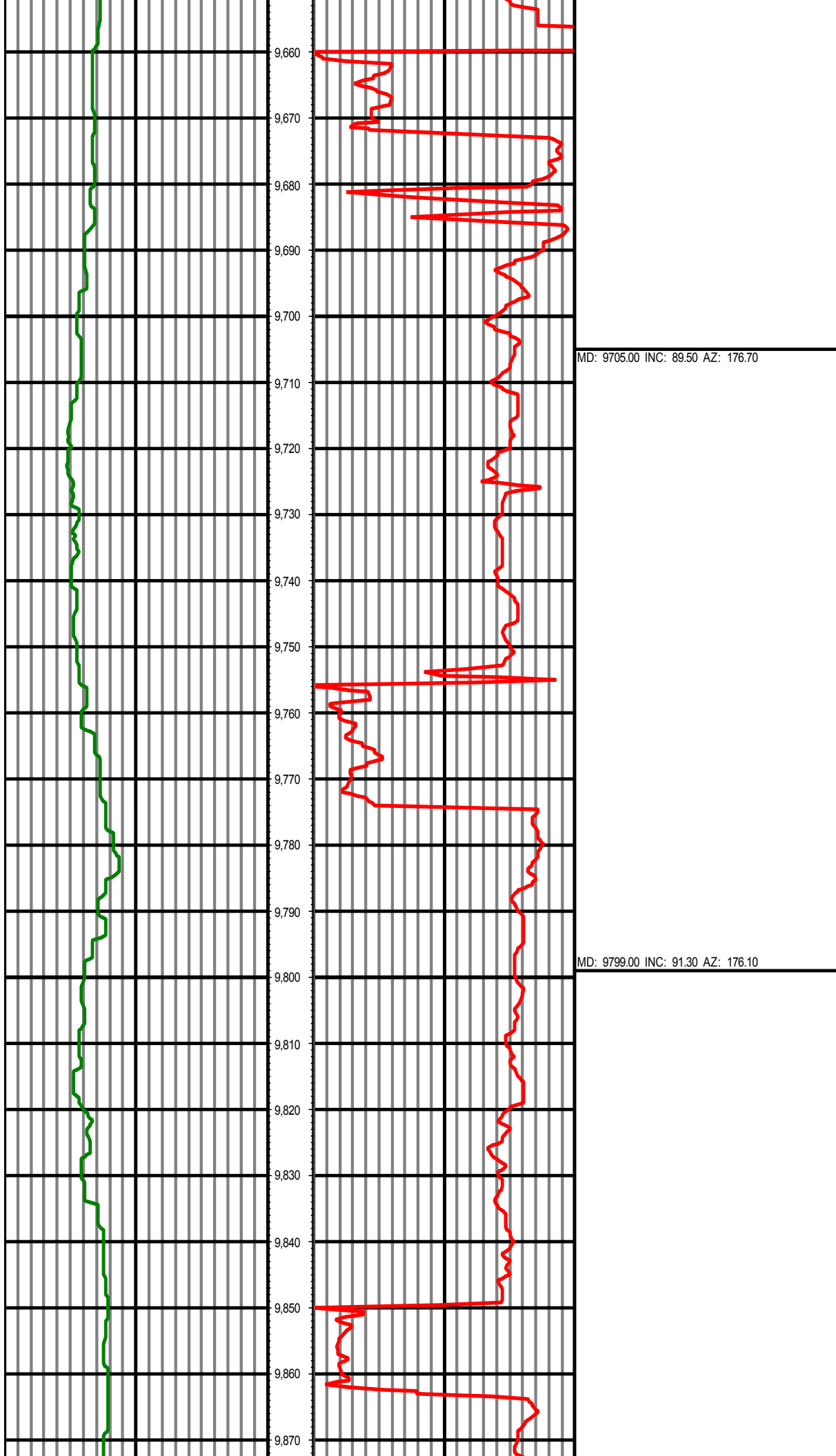


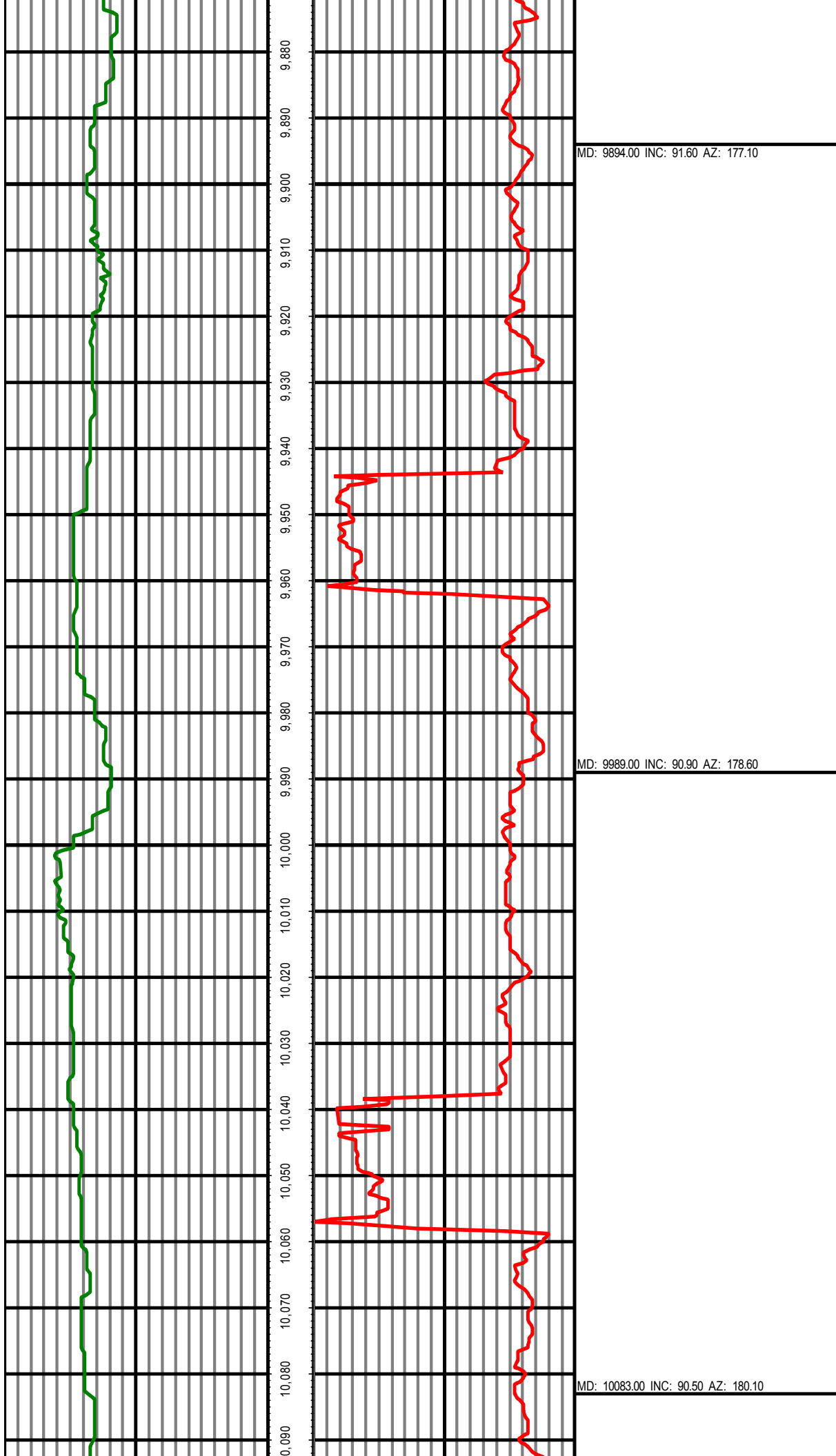
MD: 9043.00 INC: 90.00 AZ: 181.00

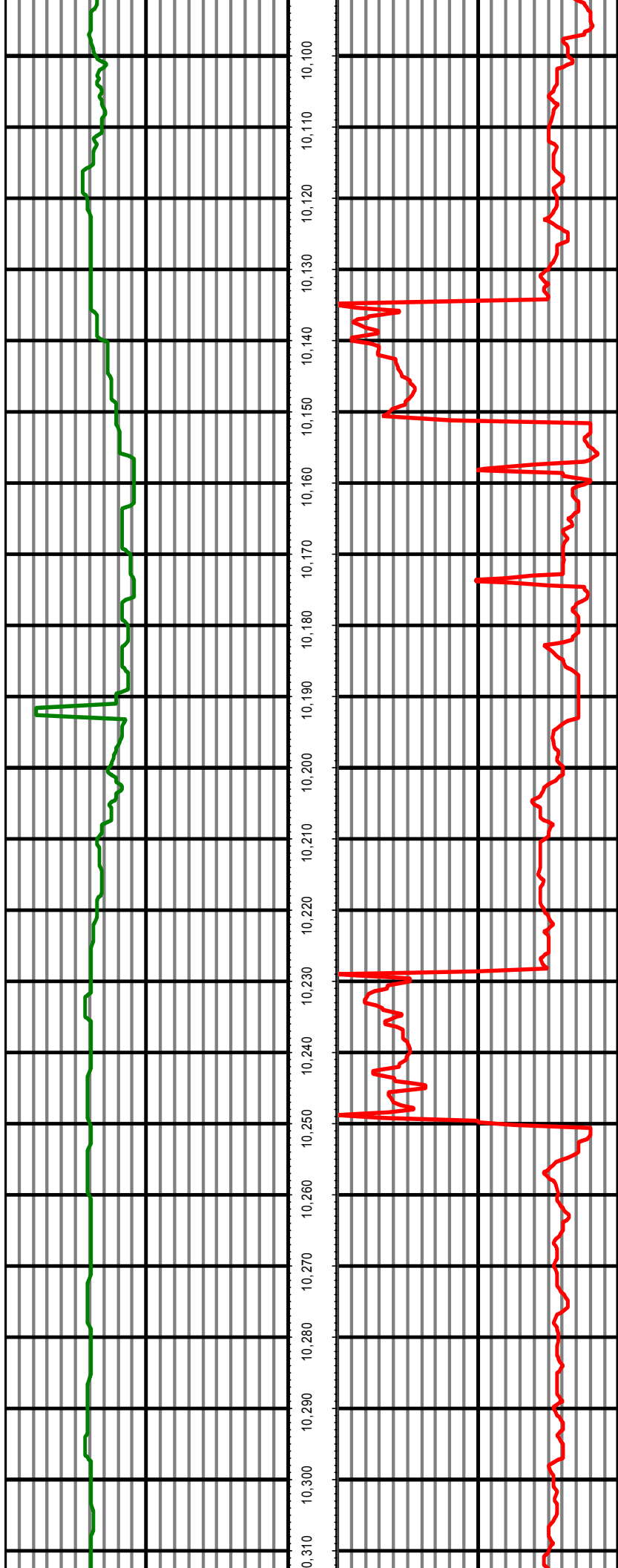
MD: 9137.00 INC: 91.70 AZ: 180.10





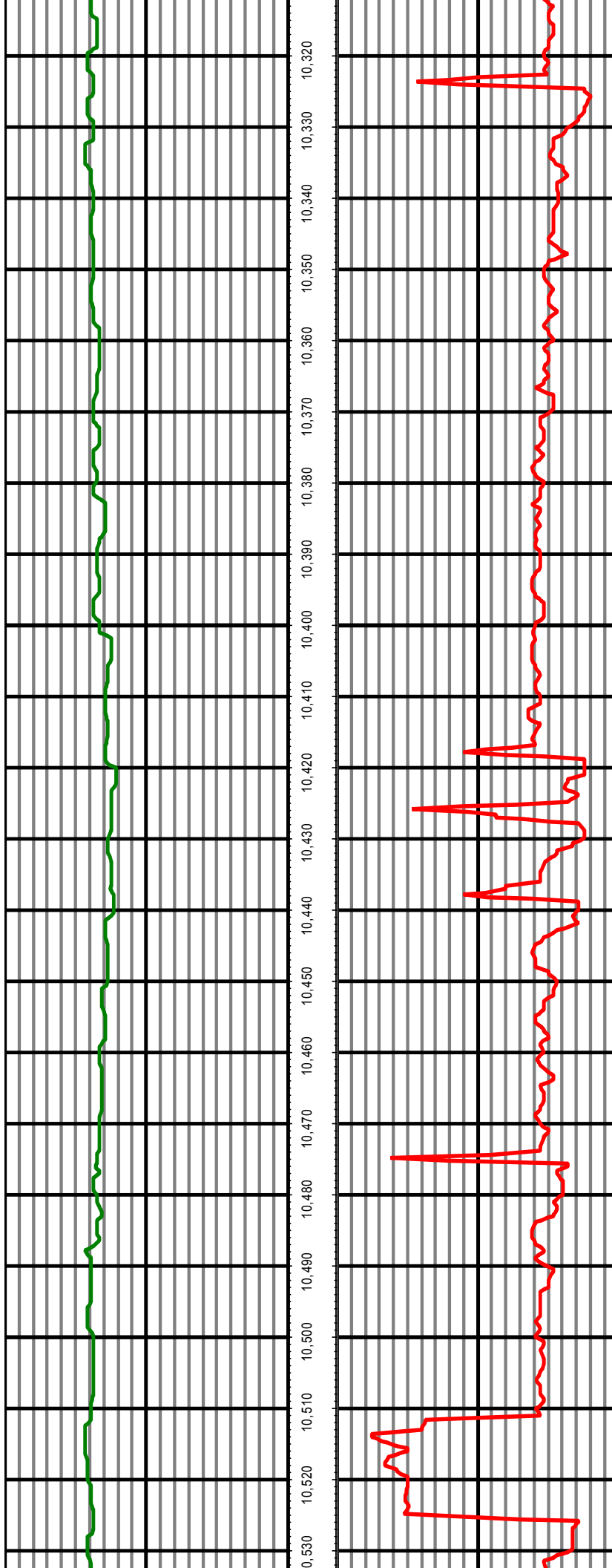






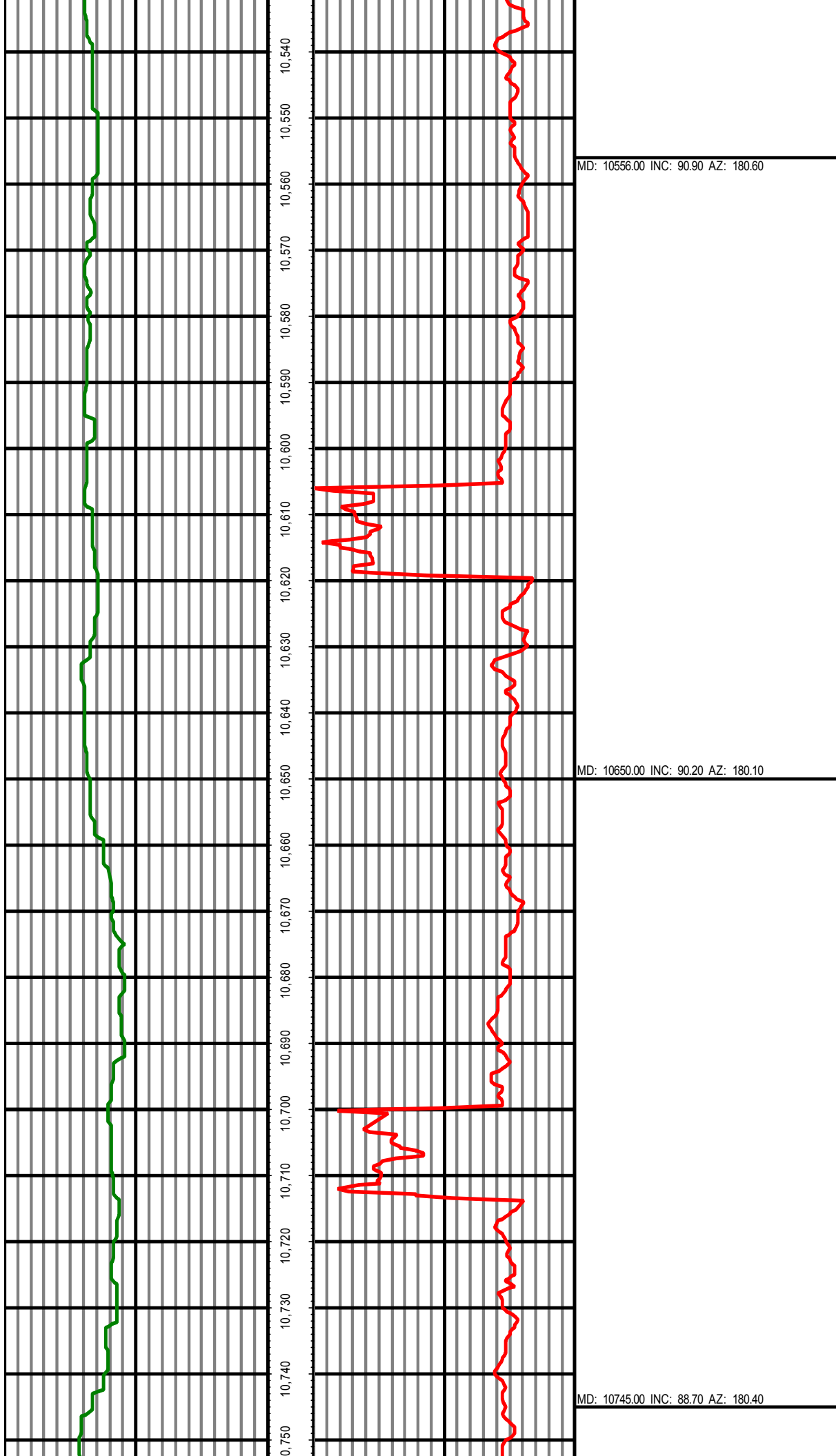
MD: 10178.00 INC: 90.80 AZ: 180.00

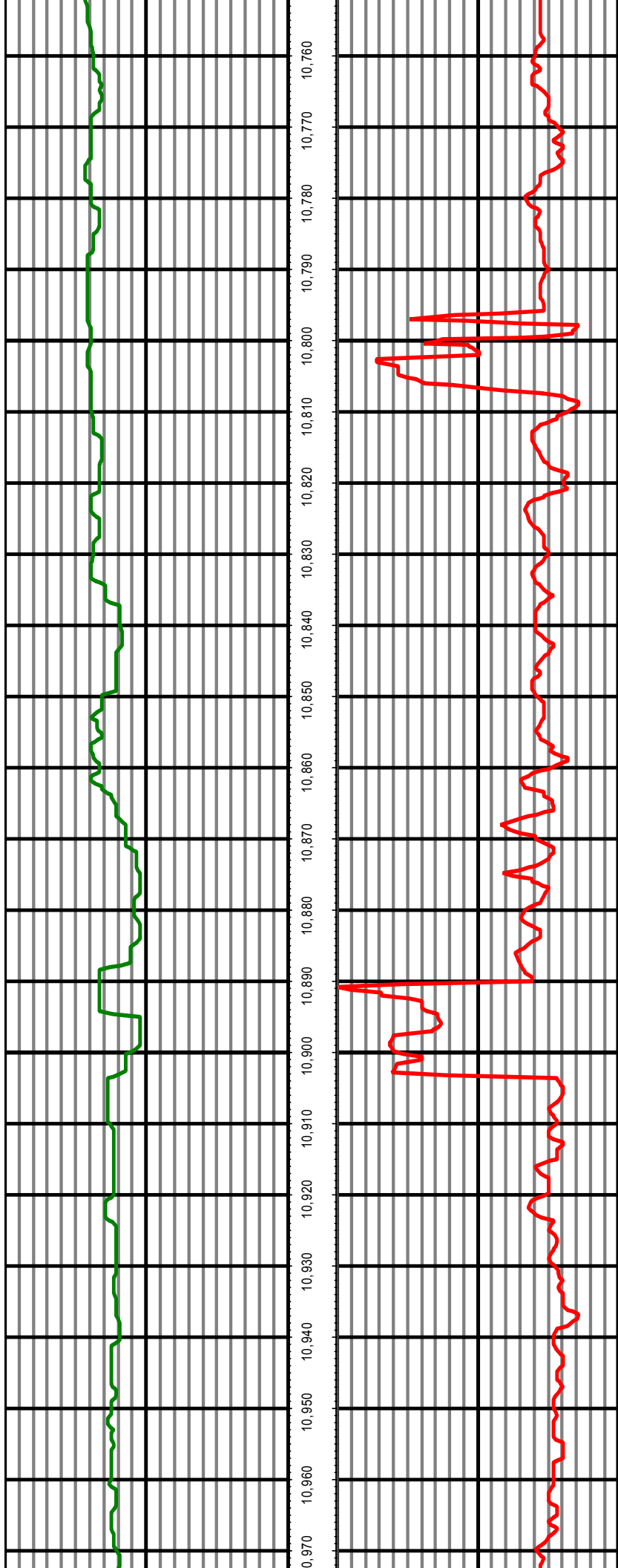
MD: 10272.00 INC: 88.80 AZ: 180.60



MD: 10367.00 INC: 89.20 AZ: 180.60

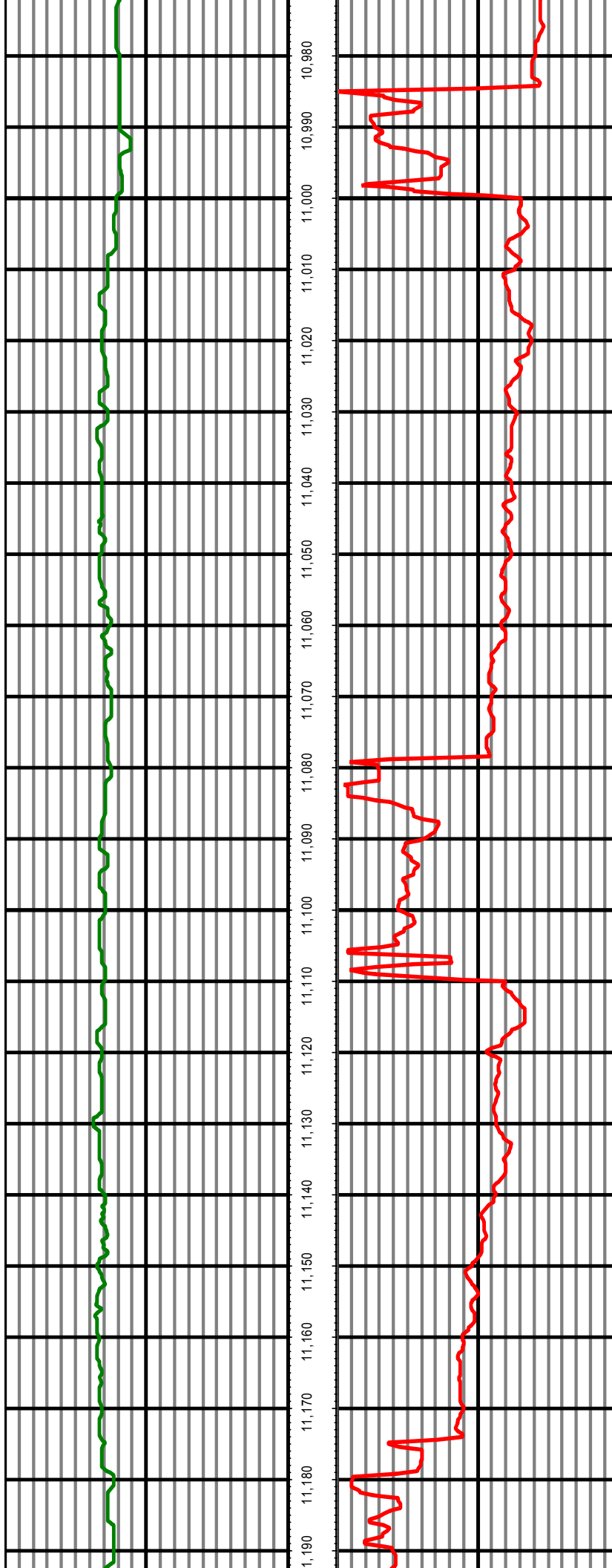
MD: 10461.00 INC: 89.10 AZ: 180.00





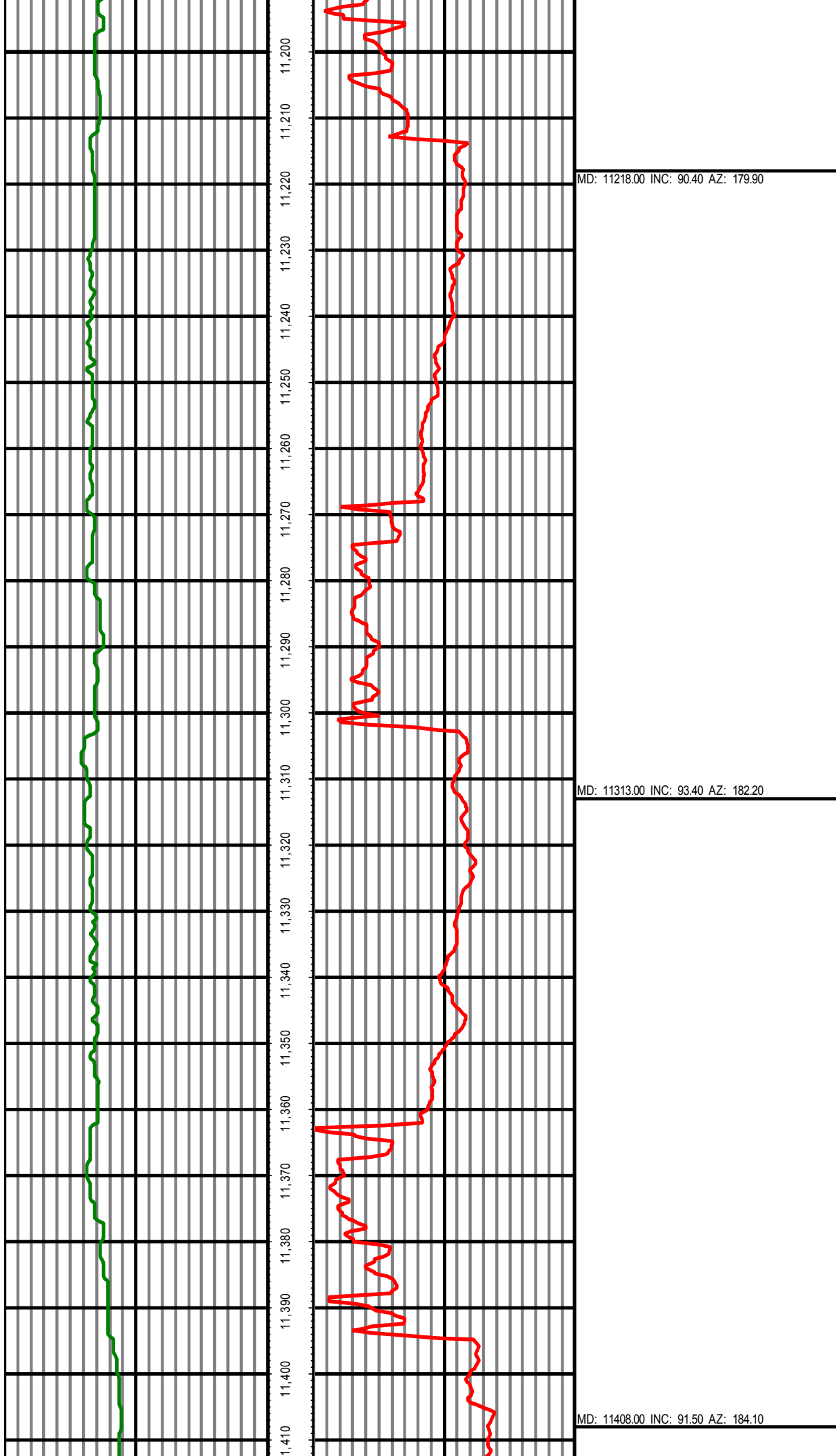
MD: 10840.00 INC: 88.80 AZ: 179.50

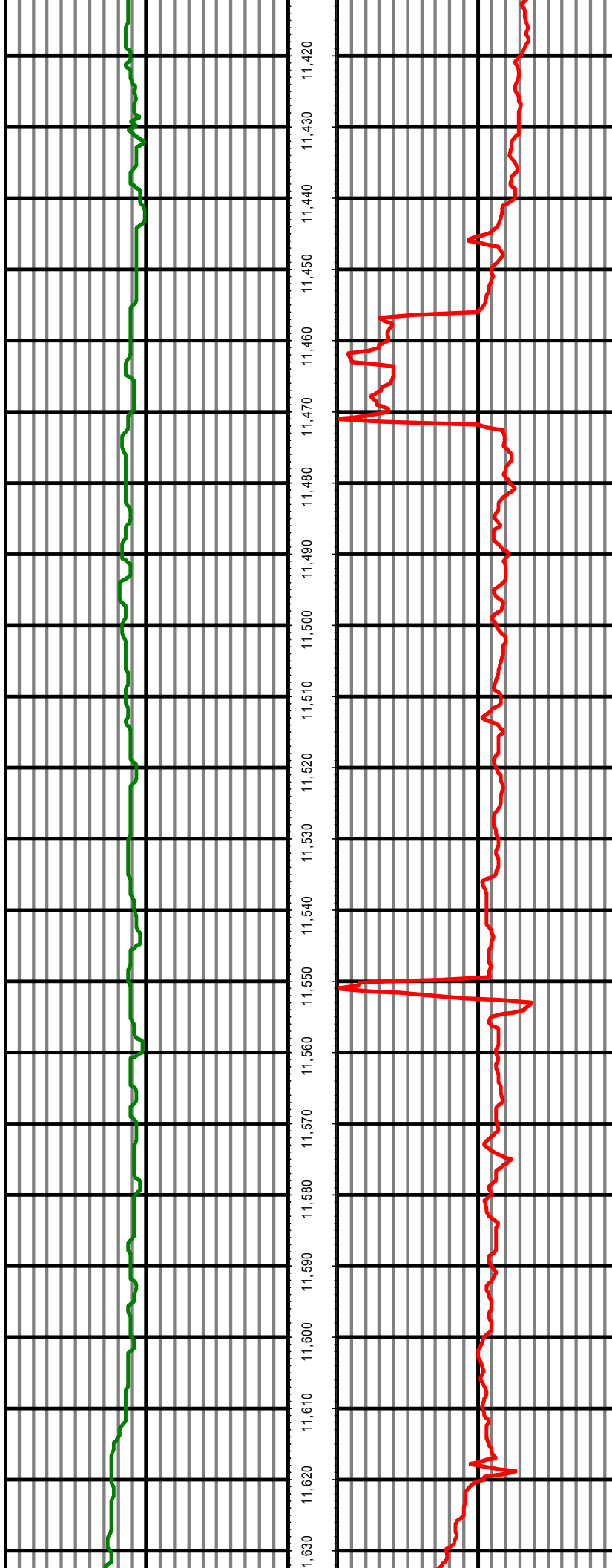
MD: 10934.00 INC: 89.70 AZ: 179.30



MD: 11029.00 INC: 88.10 AZ: 178.80

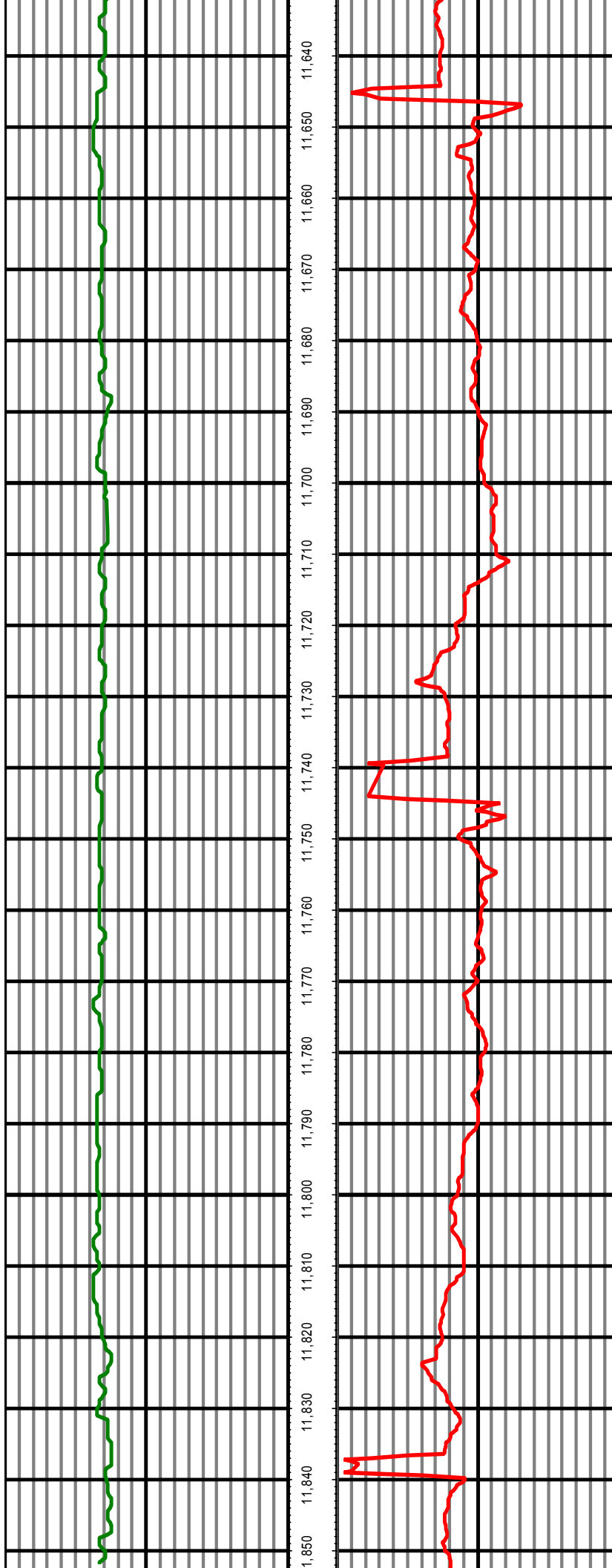
MD: 11124.00 INC: 89.70 AZ: 179.30





MD: 11502.00 INC: 90.20 AZ: 182.60

MD: 11597.00 INC: 89.20 AZ: 181.80



MD: 11691.00 INC: 89.10 AZ: 181.50

MD: 11786.00 INC: 88.90 AZ: 181.40

MD: 11837.00 INC: 88.80 AZ: 181.00

